

# THE Patchogue

HOTEL

Main and Maple  
(opp. Post Office)

GRover 5-0800

PARTIES

CONVENTIONS

WEDDINGS

BANQUETS

DANCES

FORUMS

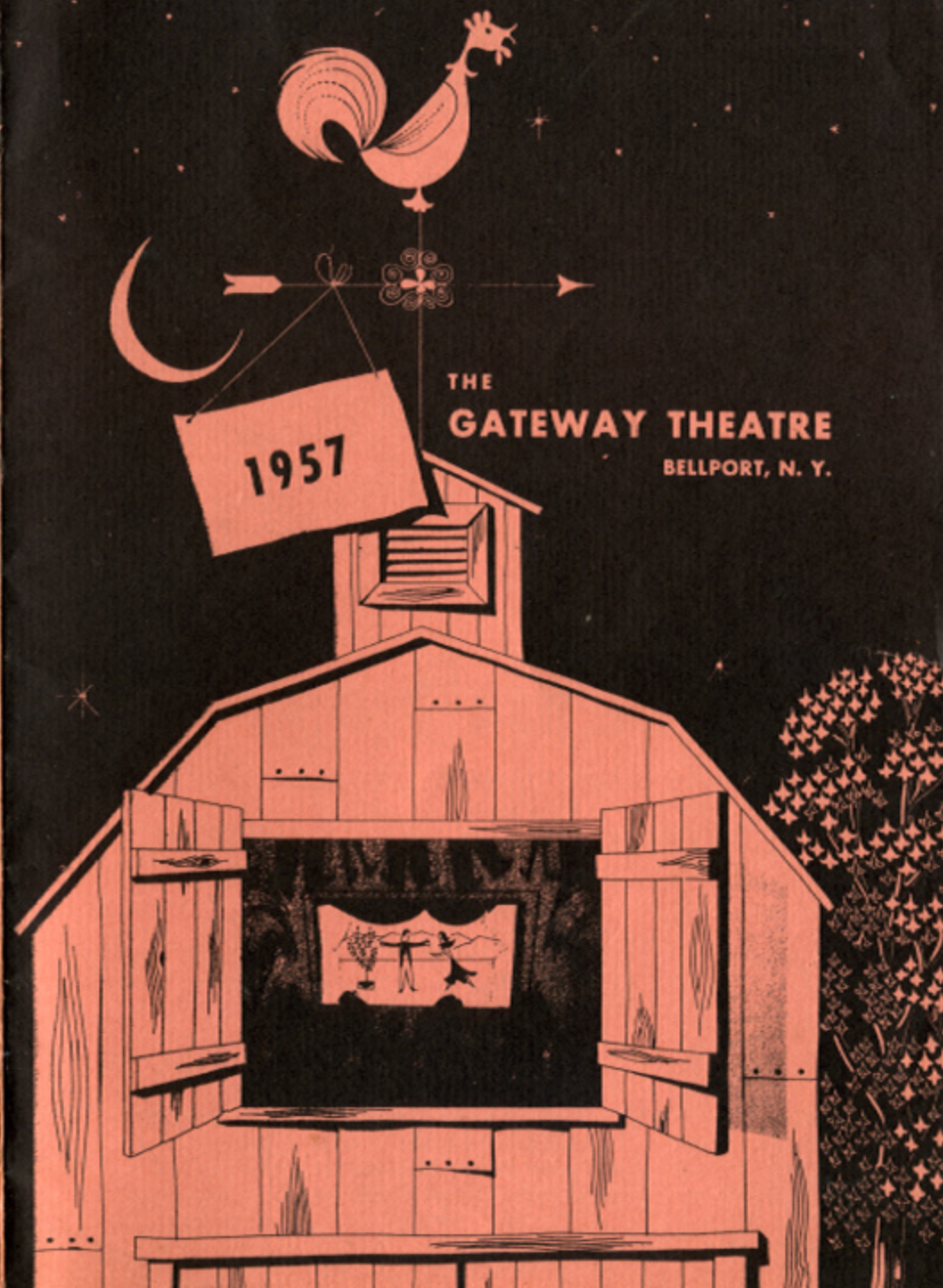


*Formal Gracious Dining  
in Air Conditioned Comfort*

*After Theatre  
Visit the Harlequin Room's  
Cocktail Lounge*

We invite you to investigate, first-hand, the hotel's impressive facilities... two fully equipped ballrooms, two fashionable dining halls, a luxurious cocktail lounge... handsome, spacious room accommodations, each with private bath... private parking for 500 cars. And for superlative food... consistent, perceptive and never ending service... and delightful surroundings... there is no place like the Patchogue Hotel in the very heart of Suffolk County.

*Long Island's Finest Catering Accommodations*



THE  
GATEWAY THEATRE  
BELLPORT, N. Y.

"Say you saw it in the Gateway Theatre Play-bill"



**THE BEST PERFORMANCE**

**LIVE BETTER Electrically**

*Smart moderns know that electricity is best & costs less*

**THE PATCHOGUE ELECTRIC LIGHT CO.**  
*Serving Southern Suffolk Since 1886*

# CasaBasso

Westhampton 4-1841

Westhampton

New York



"For Travelers of Discriminating Taste"

**SOUTH SHORE TRAVEL BUREAU**

Hotels  
Cruises  
Tours

No Extra Charge For Our Service  
GRover 5-0685

HAROLD C. SCHAEFER — AUTH. & BONDED AGENT  
401 E. MAIN ST., E. PATCHOGUE  
(Opp. T. & S. Lumber Co.)

AIR SEA RAIL BUS

"Our advertisers are progressive merchants — patronize them"

## the gateway theatre

bellport, new york

Bellport 7-0578



WHERE ARE WE GOING AS AUDIENCE IN BELLPORT  
THIS SEASON?

**THE THEATRE:** We sit around the arena on which will be imaged forth myriad scenes. Perhaps some will be quite familiar, some quite foreign, but all quite emphatic; some too emphatic. What is here painted, be it a sunlit penthouse apartment, a ranch on the broad expanse of the west, or the olive drab color of the office, each is distinct, each the picture of reality.

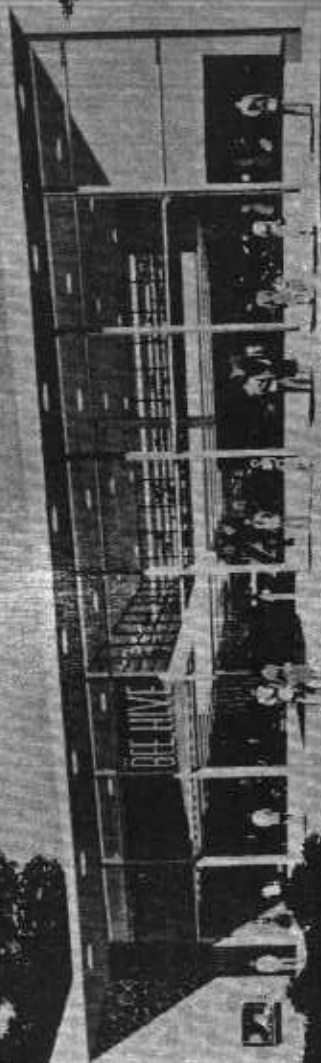
**THE ACTORS** on parade in these trappings represent ideas, colored, illumined, and objectified by playwright, director, and actor. These ideas conceived in thought have been born to that playwright who best sees the need for the fulfillment of these ideas. Victor Hugo once said "There is nothing in this world so powerful as an idea whose time has come".

**THE IDEAS** conceived in the minds of our playwrights today reflect, as they did through all ages, the life around them, and their comment on it. If this view is seen with a twinkle in the eye, the idea is called a comedy. If life presents problems unsurmountable by the human man, the idea becomes a drama, or even a tragedy. Ideas representing life in our theatre of 1957 show man as confused, jealous, frustrated, enigmatic, blind as a mortal seems to be, but on the whole, contented, seeking and able to get by with a smile and a song.

**LANGUAGE** used in today's theatre perhaps seems more coarse than usual, and character relations are exposed in not the most subtle manner. But one who knows theatre and history is aware that these same ideas have been expressed in a manner parallel to the times from Shakespeare on down. If we seem to be shocked by the mirror before us, let us do something to change the image before the glass.

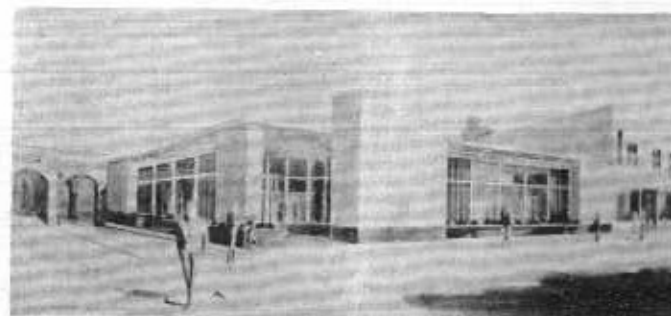
*the* **BEE HIVE**  
"DESIGNED FOR SUFFOLK LIVING"  
PATCHOGUE, N. Y.

*"The Ultimate in Shopping Convenience"*



*"Say you saw it in the Gateway Theatre Play-bill!"*

## THE PEOPLES NATIONAL BANK OF PATCHOGUE



EAST MAIN STREET

PATCHOGUE, N. Y.

**CORDIALLY INVITES YOUR ACCOUNT**  
NEW BANK BUILDING FEATURES

DRIVE-IN DEPOSIT WINDOW — EASY PARKING  
MID-ISLAND OFFICE — Route 25, SELDEN, N. Y.

Member Federal Deposit Insurance Corp.

**GATEWAY THEATRE** is Long Island's only arena summer theatre with a resident company of Equity players.

Each week Gateway's professional casts will portray the best to be found in to-day's contemporary classics, fresh from the pens of our most popular playwrights and successful Broadway openings.

In conjunction with the theatre Gateway conducts a nationally known Apprenticeship School and student workshop for non-professionals. Daily classes are conducted in all phases of drama and dance by Gateway's faculty of instructors. Student productions are given on July 28th and on August 24th and 25th to which the public is invited.

Gateway welcomes your support as a patron, actor, backstage worker, publicity or as a contributor to our prop and costume rooms—in the furtherance of our goal "Good theatre a cultural outlet".

FOR PLAY INFORMATION TUNE WAPC 1580 RADIO



*"Ride with Pride"*

**SOUTH BAY PONTIAC MOTORS Inc.**

*Big Car Luxury at a Home Town Price*

252 E. Main St.  
PATCHOGUE, N. Y.

*Excellent Service*

GRover 5-0533

*Late Model Used Cars*

*"The progressive businesses in this program give the best values"*

"Say you saw it in the Gateway Theatre Play-bill!"

# SWEZEY FUEL CO.

*Fuel Oils*

Rider Avenue  
PATCHOGUE, N. Y.  
GRover 5-0270



Beach Street  
PORT JEFFERSON, N. Y.  
PORT Jefferson 8-0555

Oil Burners - Heating Systems - Installed and Serviced

## BENJAMIN CHARACH & SON

REAL ESTATE - INSURANCE

6 West Main Street, PATCHOGUE, N. Y. GROVER 5-2000



GRover 5-1830

536 EAST MAIN STREET PATCHOGUE, N.Y.

Formerly Maran Lumber—Open Weekdays 7:30 A.M. to 5 P.M.—Fri. to 8 P.M.

HEADQUARTERS OF OPERATION "Home Improvement"

Financing arranged:- Construction, Garages, Basements, Improvements



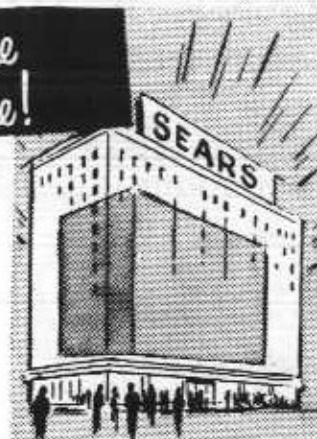
Bellport 7-0079

Emergency Phone  
Bellport 7-0838

"For a good product and a good service -- patronize our advertisers"

"Say you saw it in the Gateway Theatre Play-bill!"

Visit the Store  
within a Store!



Is your selection problem  
unique? Or has your highly  
individual taste exhausted  
even Sears well stocked  
shelves?

Then . . . consult our cata-  
logs, the world's largest  
selection of usual and un-  
usual merchandise!

## SEARS CATALOG SALES DEPT.

2 Day Delivery

**SEARS, ROEBUCK & CO.**

214 E. Main St. Patchogue, N. Y.  
GRover 5-4500

## FOUNDERS OF GATEWAY THEATRE



Sally Laurence



David Sheldon



Ruth Vickers

## WEIDNER-MACKLE AGENCY

Since 1918

REALTORS - INSURORS

Bellport, New York  
Telephone Bellport 7-0700



## JOHN J. ROE & SON

Since 1898

REALTORS - INSURORS

Patchogue, New York  
Tel. GRover 5-4000

"Gateway Theatre recommends the merchants and services advertised here"

"Say you saw it in the Gateway Theatre Play-bill!"

# FRANK E. HERMA, II

LICENSED REAL ESTATE & BUSINESS BROKER

Appraiser - Acreage - Homes  
Rentals - Lots

SUNRISE HIGHWAY  
PATCHOGUE

P. O. Box 807

Open 7 days  
Friday to 9 p. m.

PHONE, EMERSON 3-6313



Smart fashions  
needn't be  
expensive  
when you shop at  
.....

## Helen Ann Sanders

Patchogue, L. I. GROVER 5-0146

FOR  
Courteous, Prompt Service  
Phone  
Bellport 7-0347



Head of Neck Road  
Bellport, N. Y.

## RIVERHEAD RACEWAY AUTO RACING

Every Wednesday and Saturday Nite 8:30 P. M.

ADMISSION \$1.25 - Servicemen in Uniform \$1.00 - Children 50c  
FREE PARKING Modern Sanitary Rest Rooms

Good Food served at our concessions

## WALLEN'S IGA MARKET

GROCERIES - MEATS - VEGETABLES

Bellport's Favorite Food Mart

Main Street BELLPORT 7-0202



WATCH & CLOCKMAKER  
Fastest Kodak Color Film Service  
139 Main Street Bellport, N. Y.

## SCONZO & SONS ALUMINUM PRODUCTS MFG. CO.

SHOWROOM  
457 E. MAIN STREET  
PATCHOGUE, L. I. GROVER 5-0020

Aluminum Storm Windows  
Venetian Blinds  
Storm Doors  
Jalousies  
Shades

"Our advertisers are progressive merchants — patronize them!"

"Say you saw it in the Gateway Theatre Play-bill!"



## Rose Jewelers

DIAMONDS - WATCHES  
SILVER - CHINA AND CRYSTAL

Telephone: GROVER 5-1441

Lenox China - Minton China  
and other leading brands

Towle, Gorham, International  
and all other leading brands of Silver

74 EAST MAIN STREET PATCHOGUE, N. Y.

- AAA -

## CLARENCE HAWKINS GARAGE

Immediate Emergency Repairs - Towing  
Courteous Service  
Opp. Post Office BELLPORT 7-0185

## Gentle's

Patchogue - Port Jefferson  
Coats - Suits  
Dresses - Gowns - Sportswear



MARY WOOLVERTON returns for a fourth glorious summer as one of Gateway's and the area's favorite character actresses. Receiving her professional rating at Gateway, Miss Woolverton starred as Laura Partridge in last season's hit SOLID GOLD CADILLAC. Her characterizations of Mrs. Watty in THE CORN IS GREEN, as Andree in GIGI and Ruth in BLYTHE SPIRIT, will be well remembered by Gateway theatre-goers. Before coming to Gateway she appeared at the Bolton Theatre in London and at the Hedgerow Theatre in Pennsylvania.



MILT COMMONS who was first seen at Gateway as the evil Mr. Snell in SOLID GOLD CADILLAC, which he also directed, reversed his field the next week to reappear as the benevolent Mr. Penny-packer. He continued with various states of pleasantness through RAINMAKER and SABRINA FAIR. Such drastic switches are consistent with the long series of roles ranging from the boy-netx-door to a visitor-from-outer-space that Milt has played in his career. His stock credits range literally from Maine to California. In New York he has appeared at the Blackfriars Theatre, and for the past two winters has acted and directed for the Pittsburgh Miniature Theatre.

## SWAN RIVER BOAT YARD

Row Boats For Rent  
Trailers Made To Order  
WELDING Boats Hauled  
GROVER 5-0220  
Pine Neck Ave. E. Patchogue

Phone: GROVER 5-2993

## AUTHORIZED RADIO & TELEVISION SERVICE

294 East Main St. Patchogue, N. Y.

GROVER 5-3165

## CLEAR-VIEW & FIALA, INC.

Paints - Wallpapers - Garden Supplies  
197 E. Main St. Patchogue, N. Y.

## Colorizer

1350  
Colors



"For a good product and a good service — patronize our advertisers!"

"Say you saw it in the Gateway Theatre Play-bill"

# TIGHT ROOFS McRAE BROS

Roofing — Siding — Insulation — Aluminum Combination Windows  
GRover 5-4200 HUuntington 4-2746 PArk 7-2859 MOhawk 9-1344  
IVanhoe 6-7770 EAsT Hampton 4-0212 SOuthampton 1-0113

### ABOUT THE PLAY

WITNESS FOR THE PROSECUTION, by Agatha Christie, is one of the most successful plays of its kind. It enjoyed long runs in both New York and London where audiences delighted in the suspense and tension created by this thriller. In the past, this play has been performed on large proscenium stages, with the audiences seated along the fourth wall of the courtroom. At Gateway, for what is probably the first time, we are going to present Witness for the Prosecution in Arena Style. Through the use of intricate lighting technique and utilization of sound and music, we are hoping to create both the suspense and tensions so important to a successful production of this play. In producing this play in arena style, it is our most sincere hope that you in the audience will be caught up in the excitement and action, and that, as a result, you will leave The Gateway Theatre feeling as though you had not seen a play, but had been witness to something that actually happened.

NOTE: THE AUDIENCE IS ASKED NOT TO REVEAL THE ENDING OF THE PLAY TO THEIR FRIENDS.

### ABOUT THE DIRECTOR:

Gigi Cascio makes his bow in Bellport this season after having worked with the Gilbert and Sullivan Repetory group at Mashpee on Cape Cod where he received critics praise for his master's touch in directing and his excellent baritone voice, and sensitive comic portrayals. His first two Gateway Productions, ROCK HUNTER and JANUS have sparkled the Gateway Boards.

### ROBERT DUVALL

A graduate of the Neighborhood Playhouse, ROBERT DUVALL was first interested in theatre work while attending Principia College in Elmhurst, Ill. He has appeared at the Augusta Civic Theatre, the McClean Theatre in Va., and the Gateway Theatre for two and a half seasons. Such roles as Witchboy in DARK OF THE MOON, Jimmy in THE RAINMAKER, and Harvey Weems in Horton Foote's THE MIDNIGHT CALLER, are among his favorite. Mr. Duvall is a member of Sanford Miesner's professional Workshop and has worked with the mime, Alvin Epstein, a member of Marcel Marceau's Company.

FOR PLAY INFORMATION  
TUNE IN WPAC - 1580 ON YOUR RADIO DIAL

## SACK'S Stationery 22 EAST MAIN PATCHOGUE,

Our most important product  
is Friendly Courteous Service

Complete Stationery - Toys - Hallmark Greeting Cards

"For a good product and a good service — patronize our advertisers"

"Say you saw it in the Gateway Theatre Play-bill"

## "Patchogue's Finest Furniture Mart" Bert Lansman & Son GRAND RAPIDS FURNITURE

76 West Main Street GRover 5-3848 Patchogue, N. Y.

DIRECTED BY  
GIGI CASCIO

### "Witness For the Prosecution"

DESIGNED BY  
LES HARRIS

A MYSTERY BY AGATHA CHRISTIE

JULY 16-20, 1957

CARTER ..... JOC COSTELLO  
GRETA ..... NINA DiPALMA  
SIR WILFRED ROBARTS ..... RAY BARBATA  
MR. MAYHER ..... ROBERT DUVALL  
LEONARD VOLE ..... BOB DAYTON  
INSPECTOR HEARNE ..... ED SPENCER  
ROMAINE ..... LIBBY GLENN  
CLERK ..... JOSEPH JACH  
MR. MYERS, QC ..... TIM KENNEDY  
MR. JUSTICE WAINWRIGHT ... JOC COSTELLO  
WARDER ....MIKE TRAPANI, HOWARD FALES  
DR. WYATT ..... GIGI CASCIO  
JANET MAC KENZIE ..... MARY WOOLVERTON  
MR. CLEGG ..... JAMES MILLS  
THE OTHER WOMAN ..... JACKIE READING  
POLICEMAN ..... GENE HACKMAN

ACT I - The Chambers of Sir Wilfred Robarts, Afternoon.  
ACT II - The Central Criminal Court, London...6 weeks later, morning.  
ACT III - Scene 1. The Chambers of Sir Wilfred Robarts, the same evening,  
Scene 2. The Criminal Court, the next morning.

by Jean Annonah

COMING NEXT WEEK

The delightful romp of a farce

### THIEVES' CARNIVAL

JULY 23-27... Tickets on Sale during Intermission

COMING SUNDAY - JULY 28th - MATINEE:  
WORKSHOP SEMINAR OF THE OFF BROADWAY SUCCESS  
"TEACH ME HOW TO CRY"

89 E. MAIN ST.  
PATCHOGUE, L. I.

PHONE  
GROVER 5-0136

Blums

Headquarters for  
Jantzen Swim Suits and Playwear  
Rose Marie Reid—Catalina  
Swim Suits

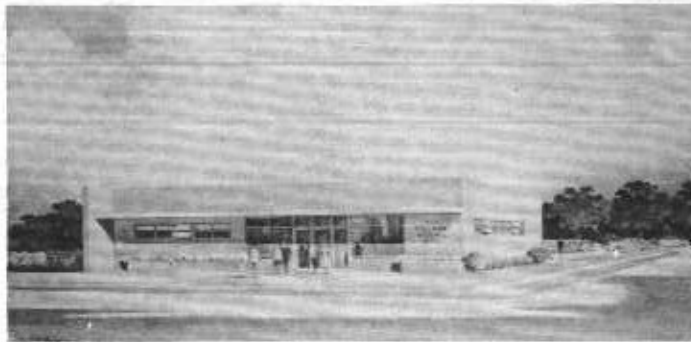
"Our advertisers are progressive merchants — patronize them"

# The Bellport National Bank

Station Road

Bellport, N. Y.

Open Monday Evening 6:00 to 8:00 p.m.



*Convenient Parking - Friendly Service*

**WHERE YOUR DOLLARS MAKE \$ENSE**

Member Federal Deposit Insurance Corp.



**ULU GROSARD** comes to Gateway as director from N.Y.C. where he is head of the Theatre Workshop. He last directed Off-Broadway, Sean O'Casey's **BEDTIME STORY** and John Patrick's

**THE CURIOUS SAVAGE**. He has directed at the Circle Theatre, Chicago; the Fort Bragg Theatre, N. C., and the Teatro Juvenil, Havana, Cuba. Mr. Grosbard studied directing at the Yale Drama School.



**LES HARRIS** made his first appearance on the Gateway stage in **TEA AND SYMPATHY**. As scene designer, his sets for **PENNY-PACKER**, **RAIN-MAKER**, **I AM A CAMERA** and **TO-**

**BACCO ROAD**, will be remembered for their originality. More recently he designed for the Willett Players and designed for **ARMS AND THE MAN** for the Slingerland Theatre.



**ISLAND  
COAL & LUMBER  
CORPORATION**

GROVER 5-3232

Route 112

Medford, N. Y.

*Serve*  
**BOHACK'S**  
Deluxe  
**TENDERAY BEEF!**  
Guaranteed  
to be  
Tender!



Bohack buys only U. S. Government-graded prime and choice beef. Then this fine beef is made even better by our famous Tenderay method, developed by Westinghouse and used only by Bohack in the New York area. *Guaranteed* to be tender every time!



The *Light*  
refreshment



**THE SHERWIN-WILLIAMS Co.**

83 SOUTH OCEAN AVENUE  
PATCHOGUE, NEW YORK

*Products*  
Super Kem Tone  
Flat-Tone  
Kem-Glo  
SWP

GRover 5-2757

**THE PATCHOGUE BANK**

47 West Main Street

Patchogue, N. Y.

Member of the Federal Deposit Insurance Corporation

"A Commercial Bank serving ALL your  
Banking Requirements"

3% Paid on Savings Accounts  
Open Friday Evening 6:30 to 8:00



**LIBBY GLENN** comes to the Gateway stage with a wealth of experience and talent. At the Cleveland Playhouse, she appeared in SEVEN YEAR ITCH, BUS STOP, THE PONDER HEART, LA RONDE and GLASS MENAGERIE. She has been featured at the Barter Theatre, Houston Playhouse, Alley Theatre and The Chatauqua Repertory Theatre appearing in such roles as Billie Dawn in BORN YESTERDAY, Liza in PYGMALION, Nina in THE SEAGULL and Celia in VOLPONE. She was educated at Wesleyan and Duke University.



**RAY BARBATA** will be remembered by Gateway audiences for his impressionable roles in TEA AND SYMPATHY, DIAL M FOR MURDER, SOLID GOLD CADILLAC, and TENDER TRAP. This is Mr. Barbata's fifth season of Summer Stock, having been with the Nisswa Summer Theatre in Minnesota for 2 seasons and with the Barn Theatre in Kalamazoo, Mich., where he scored in GUYS AND DOLLS and CAINE MUTINY. While in the Army, he played in a Signal Corps film and toured the U. S. and Canada in Special Service productions. During the past winter Ray has been active with the International Lyric Org., has appeared on Omnibus, and with Sibhan McKenna in ST. JOAN.

**W. R. HAYMAN'S  
AUTO SALES**

ENGLISH BUILT  
**FORD**

ANGELIA - CONSUL

*Authorized Triumph Dealer*

283 East Main Street  
PATCHOGUE, N. Y.

GR 5-0958

**MALETTA'S, INC.**

TV \* APPLIANCES \* HI-FI

MAGNAVOX - HOT POINT

NECCHI SEWING MACHINES

210 Medford Ave.  
Patchogue, N. Y.

GRover 5-0940  
0053

GRover 5-9769 11 A. M. to Midnight

樓 珍 寶

**PATCHOGUE ROYAL RESTAURANT**

Real Cantonese Dishes & Family Dinner  
Wines and Liquors — Air Conditioned

68 West Main St.

Patchogue

**MORLEY'S FLOWERS**

Flowers for All Occasions

Member Florist Telegraph Del. Ser.

Tel. GRover 5-1980

Patchogue

For Gracious Dining  
**The Gateway**  
presents



*The  
Better Ole*

*Delightful Dining - Continental Cuisine*

Air Conditioned Rooms . . .

. . . Dancing Saturday Nights

Open After Theatre - Closed Tuesdays

*Recommended by Cue - Gourmet - Esquire & Diner's Club*

SO. COUNTRY RD., BROOKHAVEN BELLport 7-0568



**BRONCO CHARLIE'S**  
ORIGINAL LOG CABIN RESTAURANT

*Steaks - Chops - Seafood  
Sauerbraten and Dumplings*

Tel. SAYville 4-1132

Montauk Highway

Oakdale, N. Y.

**Snapper** INN

SHORE DINNERS

Connetquot River Oakdale, L. I.  
SAYville 4-0248

**THE LINDENMERE**

Otto & Marie Amende CM 3-0553

*Continental Cuisine  
Modified American Plan*

Dining Room overlooking the Water  
Sedgemere Rd. Center Moriches

*Deli - King*

*The Best Hot Corned Beef  
and Hot Pastrami Sandwich  
in Suffolk County*

85 W. MAIN STREET  
PATCHOGUE, N. Y.

GRover 5-9744

**THE SHOREHAM**

"since 1903"

RESTAURANT

"On the Great South Bay"

Shore Dinners Sea Food  
Foot of Foster Ave. SAYville 4-0060

*"A Good Place to Eat - Where Old Friends Meet"*



On Montauk Highway E. Patchogue



*Bellport's Finest Restaurants  
and Cocktail Bar*

**IRON HORSE INN**

108 So. Country Rd. BELLport 7-0556  
Steaks, Chops & Fresh Sea Food



**DENNIS MAUD TREE EXPERT CO.**

COMPLETE TREE SERVICE Diagnosis Without Charge  
 \* Pruning \* Fertilizing \* Tree Removal  
 \* Spraying \* Tree Surgery \* Tree Moving \* Poison Ivy Control

615 E. Main St. GRover 5-1233 Patchogue, L. I.  
 2880

**ZEIDLER MOTORS** GRover 5-2345

Rt. 112  
 MEDFORD, NEW YORK

Renault - Volvo

*Studebaker*



CARS & TRUCKS

Tel. GRover 5-2531

**STANLEY'S**

— Bedding and Furniture Co. —  
 Juvenile - Corpeing - Novelities

44 East Main St. Patchogue, N. Y.

GRover 3-2538

**GUTTE, INC.**

Largest Hardware Store in  
 Suffolk County

17 West Main St. Patchogue, N. Y.

GRover 5-9881

**CASSEL G.M.C. TRUCK SALES**

Authorized Dealer

SALES - SERVICE - PARTS

188 Medford Ave. Patchogue, N. Y.



392 E. Main St. Patchogue, N. Y.

*Richard York*

OF PATCHOGUE

"Your Red Cross Shoe Store"

14-22 So. Ocean Ave.

Tel. GRover 5-1047 Patchogue



**QUALITY  
 BAKERY**

South Country Road  
 Montauk Highway  
 East Patchogue, N. Y.

**BOB RITCHIE BOAT YARD**

Marine Supplies - Storage

Custom Skiffs - Cruisers, Inc.

Boats

Little Dude Trailers

168 West Ave. Patchogue, N. Y.

Tel. GRover 5-1609

*Jet* **2 HOUR  
 Cleaners**

466 E. MAIN ST.  
 (OPPOSITE SAFEWAY) Patchogue

Visit our new Showrooms  
 Featuring  
 Complete Kitchen Dislays  
 See the Latest Building Products

**THE UNION SAVINGS BANK**

OF PATCHOGUE, NEW YORK

"at the Corner of So. Ocean and Church"

The Family Bank For All The Family.

The Only Savings Bank in Brookhaven Town.

For your convenience we are open Friday evenings from 6:30 to 8 P. M. Member: F.D.I.C.

*Geza Adam, Inc.*

HANDBAGS - LUGGAGE - GIFT ITEMS

The Finest In Leather Goods

Lake Ronkonkoma 146 EAST MAIN STREET  
 PATCHOGUE, N. Y.  
 ROnk. 9-8621 TEL. ATLANTIC 9-0550

GRover 5-2002

**KALLER'S JEWELERS**

*Patchogue's Oldest Jeweler*  
 with a complete Repair Shop  
 Diamonds - Watches - Silverware  
 30 E. Main St. Patchogue, N. Y.



FRANK ALBRIGHT, a member of Gateway's faculty, is director of speech activities in West Haven Conn. School system and active in the American Educational Theatre Assoc. He has many years of experience at such leading theatres as Cape May Summer Theatre and has spent 20 years in educational theatre in New Mexico, Oklahoma, Colorado and Connecticut. After 3 years at Gateway as technical director, set and costume designer, Mr. Albright will be this season's director of apprentices.



JOHN COSTELLO, Gateway's primitive dance teacher, was seen last summer in BUS STOP and RAINMAKER. He has toured two seasons in such Children's Theatre productions as ALICE IN WONDERLAND, PETER AND THE WOLF and the NUTCRACKER SUITE. He appeared for 3 months at the Cherry Lane Theatre in Picasso's DESIRE TRAPPED BY THE TAIL and for 4 months at the Cabaret Theatre in New Orleans in THE DRUNKARD. He has studied dance with Charles Weidman and Katherine Dunham.

*The Pink Cottage*  
**GIFTS**

"Come in and Browse Around"

SOUTH COUNTRY ROAD EAST PATCHOGUE,

GRover 5-0372

**FORD**

PATCHOGUE MOTORS, INC.

Tel. GRover 5-1133

501 medFORD Ave. Patchogue

**PATCHOGUE ESTATES INC.**

FRANK SILVERMAN, President

161 Oak St.

Patchogue, N. Y.

"Say you saw it in the Gateway Theatre Play-bill"

Glasses are not just a fit but a carefully fitted B from your  
Ophthalmologist (Eye Physician)



**PATCHOGUE OPTICAL  
COMPANY**

MEDICAL ARTS BLDG.  
107 N. Ocean Ave.

Patchogue, N. Y.

GRover 5-0222

**ROLLIC, INC.**

A. W. PFEIFLE, President

Serving the 48 States, Mexico, Cuba, Hawaii and South America

WITH PLAYCLOTHES FOR THE WELL-DRESSED YOUNGER SET

INQUIRE ABOUT SPECIAL THEATRE PARTY DISCOUNTS

**THEATRE STAFF**

Producer \_\_\_\_\_ Gateway Enterprises Inc.  
Managing Director \_\_\_\_\_ Sally Laurence  
Production Directors \_\_\_\_\_ Gigi Cascio  
Ulu Grosbard  
Scenic Designer \_\_\_\_\_ Les Harris  
Apprentice Director \_\_\_\_\_ Frank Albright

Business Manager \_\_\_\_\_ H. C. Pomeran  
Advisor \_\_\_\_\_ David Sheldon  
Lighting Equip't \_\_\_\_\_ South Bay Electric Co.  
House Manager \_\_\_\_\_ Robert Dayton  
Asst. Tech. Dir. \_\_\_\_\_ Hugh Southern

**SAVE TIME BY BUYING YOUR  
TICKETS IN ADVANCE**

June 29 to July 3—  
Will Success Spoil Rock Hunter  
July 9 to 13—Janus  
July 16 to 20—  
Witness for the Prosecution  
July 23 to 27—Thieves Carnival  
July 30 to Aug. 3—View From the Bridge  
Aug. 6 to 10—Chalk Garden  
Aug. 13 to 17—Champagne Complex  
Aug. 20 to 24—All Summer Long  
Aug. 27 to 31—Anniversary Waltz  
Sept. 2 to 7—Parade (A new play)  
(subject to change)

Bring your Camera To -

Phone: Yaphank 4-3308  
**Fairytown U.S.A. Inc.**  
Route 25  
(Jericho Tpke.) Middle Island, New York

- Introducing the land of Mars
- Acres and acres of delight
- Where live animals romp and play
- Refreshment stand and tables
- Kiddle Hides

**MOTHER GOOSE  
VILLAGE**

Open 8:30 A.M.  
till dusk  
7 days a week



"Our advertisers represent reliability — patronize them"

"Say you saw it in the Gateway Theatre Play-bill"

**DAVIS PARK FERRY CO.** Tel. GRover 5-1665

Mulford Street Patchogue, N. Y.

WEEKDAYS & SATURDAYS

**BEACH FERRY SCHEDULE**

Leave Patchogue		Leave Davis Park	
10:00 a.m.	2:00 p.m.	6:45 a.m.	*2:00 p.m.
11:00 a.m.	*3:00 p.m.	11:00 a.m.	4:30 p.m.
12:00 noon	*3:15 p.m.	12:00 noon	x7:30 p.m.
1:00 p.m.	x6:30 p.m.	1:00 p.m.	

\* Sat. only

x Except Fridays and July 3rd

SUNDAYS—Boats both ways every hour on the hour



"For the Young at Heart"

**WPAC - 1580 on your dial**

LONG ISLAND'S MOST POWERFUL STATION  
5000 W - PATCHOGUE, N. Y.

both men and women

HEARING TESTED  
AND  
ANALYZED



*Charles A. Pomponio*

*Certified Hearing Aid Audiologist*

HEARING AIDS PRESCRIBED  
AND CUSTOM FITTED

distinguish between voices and background

hear at ear-level, hear directionally

with new clarity

enjoy

**Higher Fidelity  
Hearing**

*Beltona*  
Hearing Glasses

*Beltona Hearing Service*

48 NORTH OCEAN AVENUE  
PATCHOGUE, L. I., N. Y.

GRover 5-0454

"Our advertisers support good theatre — patronize them"