

THE Patchogue

Main and Maple
(opp. Post Office)

HOTEL
GRover 5-0800



Cool, Comfortable
Hotel Rooms
with private baths

Accessible to:
Beach Clubs, Golf Course,
Boat Docks,
Theatre

*After Theatre
Visit the Harlequin Room's
Cocktail Lounge*

*Formal Gracious Dining
in Air Conditioned Comfort*

- * Dances
- * Conventions
- * Weddings
- * Parties
- * Banquets

A Perfect Gift

Gateway's Prepaid Ticket Admissions Book makes a distinctive and thoughtful present for: —

BIRTHDAYS — ANNIVERSARIES — or for any occasion
It will last all Summer - Tickets may be used anytime.

10 ADMISSIONS FOR THE PRICE OF 9

Books may be purchased at the Box Office or by Mail.

(DETACH HERE)

Name _____

Address _____ Phone _____

I would like _____ books of prepaid admissions at a 10% savings.

____ Send me Book A — 10 weekday or Sunday tickets at \$2.65 for \$23.85

____ Send me Book B — 10 weekday or Sunday tickets at \$1.85 for \$18.65

____ Send me Book C — 10 Saturday early or late tickets at \$3.30 for \$29.70

____ Send me Book D — 10 Saturday early or late tickets at \$2.50 for \$22.50

My check for \$ _____ is enclosed. Please gift wrap _____.



GATEWAY PLAYHOUSE
BELLPORT, N. Y.

LIVE BETTER ...Electrically

Save with

PELCO

ELECTRIC SERVICE

THE PATCHOGUE ELECTRIC LIGHT CO.
— Serving Southern Suffolk Since 1886 —



Casa Basso

WESTHAMPTON 4-1841

Westhampton New York

Open 12:00 Noon to 12:00 Midnight — Closed Monday

—OPEN THE YEAR ROUND—

"For Travelers of Discriminating Taste"

SOUTH SHORE TRAVEL BUREAU

No Extra Charge For Our Service
Grover 5-0685

HAROLD C. SCHAEFER — AUTH. & BONDED AGENT
401 E. MAIN ST., E. PATCHOGUE
(Opp. T. & S. Lumber Co.)

AIR SEA
Hotels Cruises
Tours
RAIL BUS



Gateway Playhouse

BELLPORT, L. I., N. Y.



"IF YOU MISSED IT ON BROADWAY . . . SEE IT AT GATEWAY"

GATEWAY has achieved recognition as one of the leading summer theatre organizations in America. Established in 1949, it is best known as a talent showcase for New York and Hollywood. Producers, agents, critics, and directors attend Gateway's Playhouse and Theatre productions. Hundreds of actors are carefully auditioned each year and an actor must be interested in educational theatre to secure a post in the resident company. Gateway's choice of plays runs from the current Broadway releases to experimental and new plays whenever possible.

YOUNGER MEMBERS OF THE RESIDENT COMPANY. A very important part of Gateway's producing company is made up of these actors, designers, and technicians who came from the leading universities and schools of drama. Represented in the acting ensemble this season are the American Academy of Dramatic Arts, the American Theatre Wing, Pasadena Playhouse, University of California, Tulane, Harvard, College of New Rochelle, Yale Drama School, Wellesley, Muskingum, Ithaca, University of Tennessee, Gettysburg College, Texas Western, Brooklyn College, La Salle, Temple, La Grange, Pratt Institute, Long Island University, Bridgeport, Teachers College of Connecticut and Carnegie Tech.

APPRENTICE WORKSHOP. Each summer a group of students live on the adjoining Gateway estate and study drama, dance, music, and art. A concentrated summer semester in the performing arts prepares them for a career in the theatre. They attend daily classes and perform regularly. Many Gateway apprentices have gone on to make a name for themselves in television, the stage, and motion pictures.

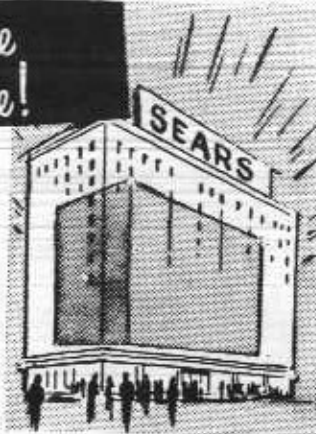
In a continued effort to better serve its audiences, Gateway welcomes comments and suggestions. Play announcements and literature can be received by signing the guest book in the lobby.



Visit the Store
within a Store!

Is your selection problem
unique? Or has your highly
individual taste exhausted
even Sears well stocked
shelves?

Then . . . consult our cata-
logs, the world's largest
selection of usual and un-
usual merchandise!



SEARS CATALOG SALES DEPT.

24 HOUR DELIVERY
SEARS, ROEBUCK & CO.

214 E. Main St. Patchogue, N. Y.

GRover 5-4500

Grant Brands Guarantee
you MORE for your money

Grants

KNOWN for VALUES

Shop the easy way . . . with a W. T. Grant
"Charge-It" Plan . . . No money down . . . Months to pay

PATCHOGUE, NEW YORK

GRover 5-4777

STAFF FOR GATEWAY PLAYHOUSE

*Manager	Harry C. Pomeran
Director	David Sheldon
Designer	Frank Albright
Technical Director	Julian Dey
Apprentice Director	Dol Green
Showcase Director	Peter Marble
Dance Supervisor	Katherine Litz
Art Director	Calvin Fortbrook
Consultants	Ruth Vickers
	Sally Laurence
Accountant (CPA)	J. Simon Assoc.

PUBLIC RELATIONS COMMITTEE

Mrs. Ann Dicker	Oakdale
Mrs. Rudolph Jezik	East Islip
Mrs. Donald Huszagh	Bayport
Mrs. Richard Jones	Sayville
Mrs. John M. Ruddy	Blue Point
Mrs. Shirley Abriss	Patchogue
Mrs. Nancy Rampulla	East Patchogue
Mrs. S. Weilbrenner	Sound Beach
Mr. Joseph Jack	B'haven Nat. Lab.
Mrs. Elizabeth Neal	Blue Point

(advertising representative)

RESIDENT COMPANY

Deborah Amussen, Joyce Andrews, Ellen Ardery, Douglas Armand, Ray Barbara, Barbara Brown, Shirley Brown, Betty Cookley, Robert Selden Duvall, Rochelle Feldman, Janet Fox, Louis Fucilo, Carol Gladstein, Thomas Golden, Charles Howard, Barbara Hutchison, Kazimer Gøizutis, Stephen Kanca, Sandra Kent, Ann Wenger, Darcy Lewis, Katherine Litz, Elaine Lowe, Jean McClintock, James Mee, Romoe Mizaro, Michael Riccardi, Barbara Sittig, Jo Anna Stevens, Theresa Stilo, Elizabeth Morris,

BENJAMIN CHARACH & SON REAL ESTATE - INSURANCE

6 West Main St. Patchogue, N. Y.
GRover 5-2000

THE BEE HIVE

"it costs no more
in a modern store"

In the 42nd year . . . and still the same friendly, informal store for the whole family! Still on the march for greater conveniences for you! Now you needn't interrupt your shopping . . . just stop at the "Queen Bee Corner" and enjoy a delicious lunch in comfortable, cheery surroundings . . . select popular priced delicacies in the "Gourmet Shop" . . . or treat the family to a box of *Barton's* famous continental chocolates! And whatever you do, visit our chic new shoe salon, and the even newer millinery department a-bloom with gay, smart chapeaux! Make *your* shopping headquarters the BEE HIVE, eastern Suffolk's biggest, *brightest* department store for leisurely shopping at modest prices!

East Main Street Patchogue, L. I.
GRover 5-9000



HONEST INJUN...

You'll Love
**BOHACK
TENDERAY BEEF!**

It's U.S. Government-graded
Choice beef, made even better by
the famous Bohack Tenderay
method. It's guaranteed tender
or your money back!



Sold only at

BOHACK FOOD MARKETS

GET OUR
"WATCHDOG"
SERVICE



SWEZEY FUEL CO.

HEATING OIL
AND
OIL BURNERS

Rider Avenue
PATCHOGUE, N. Y.
GRover 5-0270



Beach Street
PORT JEFFERSON, N. Y.
PORT Jefferson 8-0555

Oil Burners - Heating Systems

Installed and Serviced

— 1959 Schedule —

BELLS ARE RINGING	June 23—July 5
THE GIRLS IN 509 (a riotous comedy)	July 7—July 12
SAY DARLING (the musical romp)	July 14—July 19
THIRD BEST SPORT (hilarious comedy)	July 21—July 26
BABY DOLL (and Mississippi neighbors)—Tennessee Williams	July 28—Aug. 2
ONCE MORE WITH FEELING (hit comedy)	Aug. 4—Aug. 9
THE HAPPIEST MILLIONAIRE (Fun!)	Aug. 11—Aug. 16
SALAD DAYS (musical comedy success)	Aug. 18—Aug. 23
LOOK HOMEWARD ANGEL (Pulitzer Prize)	Aug. 25—Aug. 30
LIL' ABNER (Musical for the family)	Sept. 1—Sept. 13

— Subject to change —
(See back cover for special offer)

The *Light*
refreshment



"THE ONLY LARGE LUMBER YARD IN THIS AREA"



ISLAND

COAL & LUMBER CORPORATION
PATCHOGUE-PORT JEFFERSON ROAD
MEDFORD, L. I., N. Y.

Telephone GRover 5-3232

ROLLIC, INC.

Manufacturers of
JUVENILE PLAYCLOTHES

400 East Main Street
PATCHOGUE, NEW YORK

GATEWAY ALUMNI

GATEWAY PEOPLE ARE ACTIVE IN NEW YORK AND HOLLYWOOD: Christopher Hewett featured in FIRST IMPRESSIONS with Polly Bergen and Farley Granger . . . Jay Josten stars weekly in TV's NIGHT COURT . . . Sol Frieder tour in BIOGRAPHY with Faye Emerson . . . Michael Gazzo ("Hatful of Rain") has his NIGHT CIRCUS produced on Broadway . . . Herb Appleman has new book on fall list . . . Carl Reindel featured in Broadway's DARK AT THE TOP OF THE STAIRS after Gateway apprenticeship . . . Bob Kalfin co-produces and directs THE GOLEM . . . Day Tuttle produces in his beautiful new East 74th Street Theatre . . . Rosina Fernhoff acts in GERANIUM HAT after scoring success in FASHION . . . Gene Hackman, Ronald Dawson, and William DePrato appear on US STEEL HOUR shows . . . Joe Scully joins NERO WOLFE staff after associate producer assignment on STUDIO ONE . . . Sally Laurence and Les Harris start new drama and art workshop in Albany . . . Jeff Meisser, Dawna Shove, James Stephens, and Art Alisi appear together in CAT ON A HOT TIN ROOF in Jeff's new Circle Theatre in Hollywood . . . Art appears in the PLAYHOUSE 90 "The Killers of Mussolini" . . . Norman Roland acts in New York's G. B. Shaw Festival.

ADVERTISEMENT



IRVING BELLER part of the successful team known as SYBELLE CARPETS, has just recently completed a wonderful year of providing a good portion of the Patchogue and surrounding areas with first quality floor covering. He has a well rounded background in the floor-covering business and is constantly striving to bring better quality as well as lower prices to the people of the area. Irving is married and has four children and lives in the Patchogue area. So if you're looking for 4-star floor-covering stop in at SYBELLE CARPET. The address is 474 East Main St., directly opposite the Safeway in Patchogue. Atlantic 9-1112



JERRY BELLER the other half of the SYBELLE CARPET organization, also resides in the Patchogue area with his wife and three children. Jerry has been in the floor-covering business for a good many years and has received excellent notices from numerous folks who have benefitted from his experience with floor-covering. So if you are looking for good service and quality plus the best price you'll find it all at SYBELLE CARPET in Patchogue, directly across from the Safeway. Atlantic 9-1112.

Mar Kauner

Quality Merchandise Since 1925
HART SCHAFFNER & MARX CLOTHING
BOTANY "500" CLOTHING
STETSON HATS - HATHAWAY SHIRTS

... Visit Our...
New University Shop

East Main Street Patchogue, N. Y.



536 EAST MAIN STREET
PATCHOGUE, N.Y.

Open Weekdays 7:30 A.M. to 5 P.M.—Fri. to 8 P.M.

DIRECT SOURCE FOR
LABOR & MATERIALS
TO HOMEOWNERS

Headquarters of Operation
"HOME IMPROVEMENT"
Finances Arranged: Construction, Garages,
Basements, Improvements

Grover 5-1830

SPOTS DO COME OUT

WHEN CLEANED BY

Highway Dry Cleaners

Formals our specialty

445 West Main Street

PATCHOGUE

GRover 5-2831

"Have It Done By Drubm"

AL DRUHM & CO.

HEATING - AIR CONDITIONING - FUEL OIL

EMerson 3-6484

118 North Division Avenue

BLUE POINT

"Say you saw it in the Gateway Playhouse Play-bill"

TIGHT ROOFS McRAE BROS

Roofing - Siding - Insulation - Aluminum Windows - Awnings

GR 5-4200 HA 7-2746 PA 7-2859 MO 9-1344

EAsT Hampton 4-0212 SOuthampton 1-0113

Maletta's INC.

TV - APPLIANCES - HI FI
210 Medford Avenue
PATCHOGUE, L. I.

GRover 5-0940
0053

Magnavox - Hi Fi &
Stereophonic Sound
Hot Point - Kelvinator
Frigidaire - RCA Whirlpool

MAGANAVOX STEREOPHONIC & HI FI SOUND
SYSTEMS IN THE GATEWAY PLAYHOUSE
HAVE BEEN INSTALLED BY MALETTA'S



Kurt Roeloffs

— GLASSES FITTED —
Modern, Smart Looking Frames

OPHTHALMIC DISPENSER

144 West Main Street
BAY SHORE, N. Y.
BAy Shore 7-6094

35 East Main Street
PATCHOGUE, N. Y.
GRover 5-1424

GATEWAY PLAYHOUSE

Bellport, New York BELLport 7-1133

Eves. Tues. thru Fri. 8:30 Sun. 7:30 Sat. 7:00 and 9:45

WEEK BEGINNING TUESDAY JULY 7th, 1959

GATEWAY THEATRE

-presents-

The Girls in 509

with

SANDRA KENT and DARCY LEWIS

Written by Howard Teichmann
(Co-author of "Solid Gold Cadillac")

Designed by
FRANK ALBRIGHT

Directed by
DAVID SHELDON

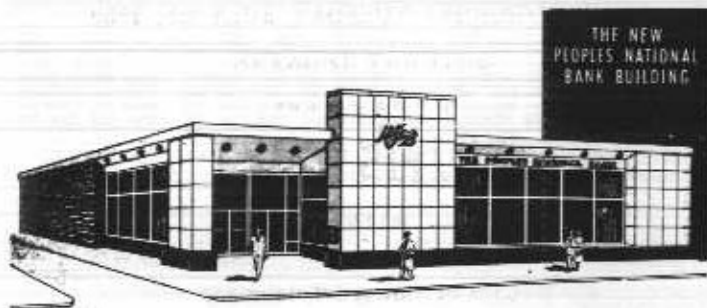
Cast

(In order of appearance)

MIMSY	SANDRA KENT
AUNT HETTIE	DARCY LEWIS
OLD JIM	JAMES MEE
RYAN, of the Daily News	JULIAN DEY
PUSEY	WILLIAM BUSH
MISS FREUD	KATHERINE LITZ
WINTHROP ALLEN	RAY BARBATA
SUMMERS, of the Herald Tribune	BETTY COAKLEY
JOHNSON, of the Daily Mirror	BARBARA SITTIG
ROSENTHAL, of the Post	ROCHELLE FELDMAN
FRANCIS X. NELLA	RAY BARBATA
AUBREY McKITTRIDGE	ROMEO MIZZARO

(Cont'd on page 14)

THE PEOPLES NATIONAL BANK OF PATCHOGUE



115 EAST MAIN STREET PATCHOGUE, N. Y.
CORDIALLY INVITES YOUR ACCOUNT
NEW BANK BUILDING FEATURES
DRIVE-IN DEPOSIT WINDOW — EASY PARKING
MID-ISLAND OFFICE — Route 25, SELDEN, N. Y.
Member Federal Deposit Insurance Corp

THE ADULT STATION
"FOR THE YOUNG AT HEART"



Long Island's Leading Radio Stations
Powerful 10,000 Watts, Patchogue, N. Y.



HARRY C. POMERAN, Gateway's manager and co-producer, came to Bellport in 1941 with a successful background in the business world. Active in the entertainment and hotel fields, he has built a wealth of good

will for the Playhouse. Ten years ago he originated the theatre's fund raising program for local charities. This plan has, through the years, brought many thousands of dollars to service clubs, churches, hospital auxiliaries and other charitable groups in this area. Harry Pomeran is past-master of his Masonic Lodge, active in religious circles, member of Patchogue Rotary Club, Chamber of Commerce. He was active in trade associations and N. Y. board of arbitration, a past president of PTA and organizer and past president of Bellport Mens Fellowship.



DAVID SHELDON was introduced to the stage at the age of 6 when he appeared as Toto the dog in THE WIZARD OF OZ. At the age of 11 he was writing comedy material for radio's "Can You Top This."

His interest in the stage as a career began in summer stock after high school. He studied drama in college, earned his MFA from the Yale Drama School, and in the army produced and narrated his own radio shows. He was a co-producer of the Playhouse Theatre in Houston, Texas. Gateway audiences will remember his direction of DIARY OF ANNE FRANK, MIDDLE OF THE NIGHT, and THE BOY FRIEND last season. David Sheldon has acted in England and is currently writing for television.



FRANK ALBRIGHT, a member of Gateway's staff since 1954, is an officer of the American Educational Theatre Association. As designer he plans, executes, and supervises the visual components of all Gateway Playhouse productions. His many years of experience in professional theatre at Cape May, Oklahoma, Colorado, and Connecticut have given him much insight into the problems and aims of a summer theatre. Frank Albright holds an MFA from the University of Oklahoma and is a speech specialist in West Haven, Connecticut. He has worked with America's finest stars such as Dame Mae Whittey, Gloria Swanson, and Fred Stone.

way Playhouse productions. His many years of experience in professional theatre at Cape May, Oklahoma, Colorado, and Connecticut have given him much insight into the problems and aims of a summer theatre. Frank Albright holds an MFA from the University of Oklahoma and is a speech specialist in West Haven, Connecticut. He has worked with America's finest stars such as Dame Mae Whittey, Gloria Swanson, and Fred Stone.

Rose Jewelers

KNOWS
SOME SECRETS

about *Diamonds*



but we'll gladly
share them
with you

ROSE JEWELERS
and
THE AMERICAN GEM SOCIETY

The American Gem Society is a selected group of 650 jewelers in the U. S. and Canada, dedicated to the development of trust and confidence in the retail jeweler by the general public and the advancement of scientific education within the jewelry industry so as to eliminate any misrepresentation caused by ignorance of the true nature and value of merchandise offered for sale.

Among the standards for the society, a member:

- a. Must enjoy a reputation for unquestioned integrity in its own community
- b. Must take and pass annual exams on the latest developments in gemology.

Rose Jewelers who are registered jewelers, American Gem Society, stand ready to serve you with professional advice on diamonds and fine jewelry.

Rose Jewelers

74 EAST MAIN STREET
PATCHOGUE

the Known Name, the Known Quality

THE GIRLS IN 509
Synopsis of Scenes

The entire action of the play occurs in the sitting room of a suite, and in the hallway of a not-now fashionable hotel in New York City. The time is the present. The play is in two acts.

ACT I

Scene 1: Late morning

Scene 2: A few minutes later.

(INTERMISSION)

ACT II

Scene 1: A minute later.

Scene 2: Early the next morning.

Scene 3: Evening.

—STAFF FOR THE GIRLS IN 509—

Assistant Director..... Michael Ricciardi

Lighting Julian Dey
Sound Rochelle Feldman

Construction by Joyce Andrews,
with Barbara Hutchison.

Costumes by Shirley Brown, with
Elaine Lowe and Lisa Morris.

House Mgr..... Romeo Mizzaro

Properties by Barbara Sittig
with Deborah Amussen and
Terry Stilo.

Stage Crew: Tom Golden,
Doug Armand.

Prod. Asst: Betty Coakley

ABOUT WILLIAM BUSH: (Professor Pusey) Having been standby for KING DONOVAN in the Broadway Production of THE GIRLS IN 509, Mr. Bush has stepped in one day before opening night to replace Bob Duvall who was released to star in a television play for CBS. William Bush has appeared on Broadway in GIRLS IN 509, BLUE DENIM, THE SHRIKE, BAREFOOT IN ATHENS. His successes on tour include: GIRLS IN 509, CAT ON A HOT TIN ROOF, WITNESS FOR THE PROSECUTION, THE SHRIKE, DEAR RUTH and UNCLE HARRY.

COMING ATTRACTION
JULY 14 thru JULY 26

Say, darling
"WONDERFULLY FUNNY!"
—Vicki Lee, *Star*

Music used in "The Girls in 509" is from a collection of authentic recordings from the 1920's and 30's. It is hoped that the political satire in our play is taken in good humor. Any reference to persons living or dead is probably intentional.

"Say you saw it in the Gateway Playhouse Play-bill"

"Patchogue's Finest Furniture Mart"
Bert Lansman & Son
GRAND RAPIDS FURNITURE

76 West Main Street

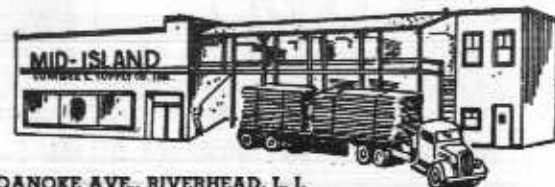
GRover 5-3848

Patchogue, N. Y.

Mid-Island Lumber & Supply Co., Inc.

Lumber and Mason Material
Free Delivery Anywhere in Suffolk County

Riverhead-
Park 7-2430



Patchogue-
GRover 5-0914

415 ROANOKE AVE., RIVERHEAD, L. I.

HELEN VOLINO

SARA VOLINO

BELLPORT



WESTHAMPTON
At CASA BASSO

WEARING APPAREL and GIFTS

DENNIS MAUD TREE EXPERT CO.

COMPLETE TREE SERVICE

Diagnosis Without Charge

- * Pruning
- * Fertilizing
- * Tree Removal
- * Spraying
- * Tree Surgery
- * Tree Moving
- * Poison Ivy Control

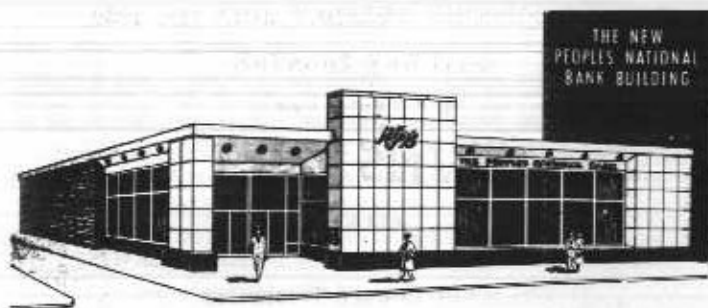
615 E. Main St.

GRover 5-1233
2880

Patchogue, L. I.

"Our advertisers represent reliability — patronize them"

THE PEOPLES NATIONAL BANK OF PATCHOGUE



115 EAST MAIN STREET PATCHOGUE, N. Y.
 CORDIALLY INVITES YOUR ACCOUNT
 NEW BANK BUILDING FEATURES
 DRIVE-IN DEPOSIT WINDOW — EASY PARKING
 MID-ISLAND OFFICE — Route 25, SELDEN, N. Y.
 Member Federal Deposit Insurance Corp

THE ADULT STATION
 "FOR THE YOUNG AT HEART"



Long Island's Leading Radio Stations
 Powerful 10,000 Watts, Patchogue, N. Y.



HARRY C. POMERAN, Gateway's manager and co-producer, came to Bellport in 1941 with a successful background in the business world. Active in the entertainment and hotel fields, he has built a wealth of good

will for the Playhouse. Ten years ago he originated the theatre's fund raising program for local charities. This plan has, through the years, brought many thousands of dollars to service clubs, churches, hospital auxiliaries and other charitable groups in this area. Harry Pomeran is past-master of his Masonic Lodge, active in religious circles, member of Patchogue Rotary Club, Chamber of Commerce. He was active in trade associations and N. Y. board of arbitration, a past president of PTA and organizer and past president of Bellport Mens Fellowship.



DAVID SHELDON was introduced to the stage at the age of 6 when he appeared as Toto the dog in THE WIZARD OF OZ. At the age of 11 he was writing comedy material for radio's "Can You Top This."

His interest in the stage as a career began in summer stock after high school. He studied drama in college, earned his MFA from the Yale Drama School, and in the army produced and narrated his own radio shows. He was a co-producer of the Playhouse Theatre in Houston, Texas. Gateway audiences will remember his direction of DIARY OF ANNE FRANK, MIDDLE OF THE NIGHT, and THE BOY FRIEND last season. David Sheldon has acted in England and is currently writing for television.



FRANK ALBRIGHT, a member of Gateway's staff since 1954, is an officer of the American Educational Theatre Association. As designer he plans, executes, and supervises the visual components of all Gate-

way Playhouse productions. His many years of experience in professional theatre at Cape May, Oklahoma, Colorado, and Connecticut have given him much insight into the problems and aims of a summer theatre. Frank Albright holds an MFA from the University of Oklahoma and is a speech specialist in West Haven, Connecticut. He has worked with America's finest stars such as Dame Mae Whittey, Gloria Swanson, and Fred Stone.

Rose Jewelers

KNOWS
 SOME SECRETS

about *Diamonds*



but we'll gladly
 share them
 with you

ROSE JEWELERS
 and
 THE AMERICAN GEM SOCIETY

The American Gem Society is a selected group of 650 jewelers in the U. S. and Canada, dedicated to the development of trust and confidence in the retail jeweler by the general public and the advancement of scientific education within the jewelry industry so as to eliminate any misrepresentation caused by ignorance of the true nature and value of merchandise offered for sale.

Among the standards for the society, a member:

- a. Must enjoy a reputation for unquestioned integrity in its own community
- b. Must take and pass annual exams on the latest developments in gemology.

Rose Jewelers who are registered jewelers, American Gem Society, stand ready to serve you with professional advice on diamonds and fine jewelry.

Rose Jewelers

74 EAST MAIN STREET
 PATCHOGUE
the Known Name, the Known Quality

THE GIRLS IN 509

Synopsis of Scenes

The entire action of the play occurs in the sitting room of a suite, and in the hallway of a not-now fashionable hotel in New York City. The time is the present. The play is in two acts.

ACT I

Scene 1: Late morning

Scene 2: A few minutes later.

(INTERMISSION)

ACT II

Scene 1: A minute later.

Scene 2: Early the next morning.

Scene 3: Evening.

—STAFF FOR THE GIRLS IN 509—

Assistant Director..... Michael Ricciardi

Lighting Julian Dey
Sound Rochelle Feldman
Construction by Joyce Andrews,
with Barbara Hutchison.
Costumes by Shirley Brown, with
Elaine Lowe and Lisa Morris.

Properties by Barbara Sittig
with Deborah Amussen and
Terry Stilo.
Stage Crew: Tom Golden,
Doug Armand.
Prod. Asst: Betty Coakley

House Mgr..... Romeo Mizzaro

ABOUT WILLIAM BUSH: (Professor Pusey) Having been standby for KING DONOVAN in the Broadway Production of THE GIRLS IN 509, Mr. Bush has stepped in one day before opening night to replace Bob Duvall who was released to star in a television play for CBS. William Bush has appeared on Broadway in GIRLS IN 509, BLUE DENIM, THE SHRIKE, BAREFOOT IN ATHENS. His successes on tour include: GIRLS IN 509, CAT ON A HOT TIN ROOF, WITNESS FOR THE PROSECUTION, THE SHRIKE, DEAR RUTH and UNCLE HARRY.

COMING ATTRACTION
JULY 14 thru JULY 26



"WONDERFULLY FUNNY!"
—SEEK HER TRIP—

Say, darling

Music used in "The Girls in 509" is from a collection of authentic recordings from the 1920's and 30's. It is hoped that the political satire in our play is taken in good humor. Any reference to persons living or dead is probably intentional.

"Say you saw it in the Gateway Playhouse Play-bill"

"Patchogue's Finest Furniture Mart"

Bert Lansman & Son
GRAND RAPIDS FURNITURE

76 West Main Street

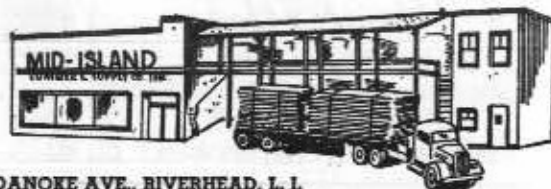
GRover 5-3848

Patchogue, N. Y.

Mid-Island Lumber & Supply Co., Inc.

Lumber and Mason Material
Free Delivery Anywhere in Suffolk County

Riverhead-
Park 7-2430



Patchogue-
GRover 5-0914

415 ROANOKE AVE., RIVERHEAD, L. I.

HELEN VOLINO

SARA VOLINO

BELLPORT



WESTHAMPTON
At CASA BASSO

WEARING APPAREL and GIFTS

DENNIS MAUD TREE EXPERT CO.

COMPLETE TREE SERVICE

Diagnosis Without Charge

- * Pruning
- * Fertilizing
- * Tree Removal
- * Spraying
- * Tree Surgery
- * Tree Moving
- * Poison Ivy Control

615 E. Main St.

GRover 5-1233
2880

Patchogue, L. I.

"Say you saw it in the Gateway Playhouse Play-bill!"



Bellport 7-0079 Emergency Phone
Bellport 7-0838

"Reliability Since 1900"

FORD



PATCHOGUE MOTORS, INC.

Tel. Grover 5-1133
501 medFORD Ave Patchogue-

Muriel Modes

BEAUTIFUL DRESSES
JUNIOR - MISSY and HALF SIZES
(Also cute maternity apparel)

25 W. MAIN ST. PATCHOGUE, L. I.

YOUTH FAIR
STORES

Suffolk's Largest Outfitters for Infants and Children

PATCHOGUE—8 East Main Street
RIVERHEAD—134 East Main Street
SOUTHAMPTON—16 Jobs Lane
HUNTINGTON—337 New York Av.

CARL & BOB'S

Catalina Swim Suits
Van Heusen Shirts

41 E. Main St.
PATCHOGUE
GRover 5-3808

49 E. Main St.
RIVERHEAD
Park 7-3143

PAUL'S CARPET SERVICE

RUGS CLEANED & REPAIRED
—New Rugs and Carpets Sold—

GRover 5-9795
W. Main St. & Atlantic Av., Patchogue



SANDRA KENT, celebrated actress and singer, comes to Gateway directly from the Broadway production of JUNO. As Shirley Booth's standby, she played Miss Booth's role opposite Melvyn Douglas in the show's pre-Broadway tour. She toured the country as Cherie in BUS STOP and has acted under the direction of Vincent J. Donehue, Jose Ferrer, and Robert Davis. Her television credits include 77 SUNSET STRIP, ROBERT MONTGOMERY PRESENTS, and MATINEE THEATRE. Touring with her own act, Sandra Kent has played the "Blue Angel" in New York and the "Chez Paree" in Chicago.



ROBERT DUVALL became interested in acting when, to vary his interest in athletics, he joined a theatre group at the Principia College in Illinois. He took to the pastime with such effectiveness that he became a "drama major" and took up acting as a full time career. He joined the Neighborhood Playhouse in New York, appeared with the McClean Summer Theatre in Virginia, and the Arena Theatre in Washington, D. C. New York theatregoers have seen him as Marchbanks in CANDIDA, the Witch Boy in DARK OF THE MOON, and Hal in PICNIC.



DARCY LEWIS, a winner of the Gertrude Lawrence Award at the American Theatre Wing, has been kept busy acting on the New York stage and on television. Her further training included Ezra Stone's Workshop and the Neighborhood Playhouse. At the Durham Star Playhouse last summer she appeared as Rosemary in PICNIC with Scott Brady and in other plays with Joanne Dru, Jeffrey Lynn, and Lillian Roth. She has acted at the Cape Playhouse and with various off-Broadway groups.

MORLEY'S FLOWERS

Flowers for All Occasions
Member Florist Telegraph Del. Ser.
Tel. GRover 5-1980 Patchogue

"Say you saw it in the Gateway Playhouse Play-bill!"

WORLD IDEAS INC.



North Country Road
SETAUKET, L. I.
SE 6-1550

COME SEE US SOON
ONE AFTERNOON
You'll Find
TOYS - BOOKS - CARDS
Water Colors - Serigraphs
Round the World Gifts

THE UNION SAVINGS BANK

OF PATCHOGUE, NEW YORK

"at the Corner of So. Ocean and Church"

The Family Bank For All The Family.
The Only Savings Bank in Brookhaven Town.

For your convenience we are open Friday evenings from 6:30 to 8 P. M. Member: F.D.I.C.

SERVING SUFFOLK COUNTY FOR ALMOST HALF A CENTURY

SMITHS

PATCHOGUE MEAT MARKET

73 SO. OCEAN AVE. GR 5-2581

"OUR NAME IS OUR BOND"

Purveyors for Hotels, Restaurants, Institutions and Home Freezers

SCONZO & SONS

ALUMINUM PRODUCTS MFG. CO.

SHOWROOM
457 E. MAIN STREET
PATCHOGUE, L. I. GROVER 5-0020

Aluminum Storm Windows
Venetian Blinds
Storm Doors
Jalousies
Shades

GRover 5-3165

CLEAR-VIEW & FIALA, INC.

Paints - Wallpapers - Garden Supplies

197 E. Main St. Patchogue, N. Y.



GRover 5-9881

CASSEL G.M.C. TRUCK SALES

Authorized Dealer
SALES - SERVICE - PARTS
188 Medford Ave. Patchogue, N. Y.



For Gracious Dining

Will take you there

BELLPORT TAXI
ANYWHERE — ANYTIME

Bellport 7-0239

R. R. Station

Bellport

SERVICE IS OUR BUSINESS
Sandy's TAXI
24 Hour Service - Radio Dispatched
GROVER 5-0550
Pete & Sandy Migliorato, Props.

SCOTCH MIST INN
SOUTHAMPTON

Gracious Dining and Dancing on the Hilltop
Enjoy Good Food and Long Island's Most Picturesque Seascapes.
Reservations SO 1-1920

Herb McCarthy's
Bowden Square
Southampton, L.I.
RESERVATIONS Southampton 1-2800

LAND'S END
One of Long Island's finest RESTAURANTS
MEMBER OF DINERS CLUB & AMERICAN EXPRESS
"on the bay"
SAYVILLE, NEW YORK
Reservations SAYVILLE 4-1885

THE LINDENMERE
Our Specialty
Duck & Sauerbraten Dinners
Dining Room Overlooks the Water
Sedgemere Road Center Moriches
Atlantic 4-0553

GROVER 5-9769 11 A. M. to Midnight
樓 珍 寶
PATCHOGUE ROYAL RESTAURANT
Real Cantonese Luncheons & Family Dinners
Wines and Liquors — Air Conditioned
68 West Main St. Patchogue

Deli-King
Luncheon & Dinners
The Best Hot Corned Beef and Hot Pastrami Sandwich in Suffolk County
85 W MAIN STREET PATCHOGUE, N. Y. GROVER 5-9744

"It's Better . . . It's Baked with Butter"
Main Street Bakery
24 WEST MAIN ST., PATCHOGUE
GROVER 5-0451

FRANK FRIEDE'S RIVERSIDE INN
Luncheon Served Daily
Dinners ala Carte
Accommodate Weddings & Banquets
Jericho Tpke ANDREW 5-9895
& Rt. 25A SMITHTOWN

The Better Ole

Delightful Dining - Continental Cuisine
Air Conditioned Rooms . . .
. . . Dancing Saturday Nights
Open After Theatre - Closed Tuesdays
Recommended by Cue - Gourmet - Esquires & Diner's Club
SO. COUNTRY RD., BROOKHAVEN BELLPORT 7-0568



BRONCO CHARLIE'S
ORIGINAL LOG CABIN RESTAURANT

Steaks - Chops - Seafood
Sauerbraten and Dumplings

Tel. SAYVILLE 4-1132

Montauk Highway

Oakdale, N. Y.

ESTABLISHED 1910

Felice — of Patchogue —
RESTAURANT

MEMBER OF DINERS CLUB & AMERICAN EXPRESS

John Felice . . . GR 5-9876

124 Waverly Avenue

Michael Felice . . GR 5-1897

PATCHOGUE

SAYVILLE 4-0060

SPECIALIZING IN LOCAL SEAFOODS
AND SHORE DINNERS SINCE 1903



THE SHOREHAM

Foot of Foster Avenue SAYVILLE
On the Bay . . . Closed Monday

SNAPPER INN

SHORE DINNERS

Connetquot River OAKDALE
SAYVILLE 4-0248

The Wheel Rest & Bar
PORT JEFFERSON, L.I.
LUNCHEON DINNER

Open Every Day All Year

on Rte. 112 bet. 25 & 25A

BILL JACOBS, Proprietor

THE PATCHOGUE BANK

"For ALL your banking needs"

Open Friday Evening — 6:30 to 8:00

Member F.D.I.C. F.R.S.

— GRover 5-3020 —

47 West Main Street

3%

On Savings
Accounts
Paid Quarterly

Patchogue

ZEIDLER MOTORS Inc.

EDSEL

Authorized RENAULT
Sales and Service

Telephone
GRover 5-2900

Route 112
MEDFORD, NEW YORK

Lentini's

DRESSES - GOWNS - SPORTSWEAR
COATS - SUITS

Stores in Port Jefferson - Riverhead
45 E. Main Street Patchogue, N. Y.

- AAA -

CLARENCE HAWKINS GARAGE

Immediate Emergency Repairs - Towing
Courteous Service

Opp. Post Office BELLport 7-0185

Terwilliger & Miller

ANGLIA - ZEPHYR SIX - CONSUL
Convertibles - Station Wagons
Thames Trucks

English Built FORD The New Zodiac
Hayman's Auto Sales & Service

New and Used Cars
GRover 5-0846

207 East Main Street Patchogue

GRover 5-0445 KATHERINE MCPEAK, R.N.
JAMES MCPEAK, R.N.

South Shore Convalescent Home

286 NORTH OCEAN AVENUE
PATCHOGUE, NEW YORK



RAY BARBATA began his theatrical career while in the Army, performing in the Special Service productions of YOU CAN'T TAKE IT WITH YOU and GOOD NEWS. His summer stock credits include the Niswaga Theatre in Minnesota and the Barn Theatre in Kalamazoo. In New York he has scored successes in SOLID GOLD CADILLAC, WITNESS FOR THE PROSECUTION, TEA AND SYMPATHY, and DIAL M FOR MURDER. Ray Barbata is a professional artist as well as a singer. He has appeared on "Omnibus" and with Sibhan McKenna in ST. JOAN.



KATHERINE LITZ has had a varied background on the stage as both actress and dancer. For two years she appeared in OKLAHOMA and CAROUSEL. She choreographed "Susanne and the Elders" of "Ballet Ballads" and danced the leading role of Susanna. Having taught modern dance and movement at Bennington College, Sarah Lawrence College, Carnegie Tech. and the Berghof Studio of Acting, she is currently on the faculty of Hofstra College. On tour, Katherine Litz played Polly in Paul Green's SATURDAY NIGHT. At Gateway she is head of the dance department.



CALVIN FORTBROOK, resident artist, is responsible for the many paintings displayed in the lobby this season. After earning his BA degree in art, he studied for two years at the Cleveland Institute of Art and worked for his Master's degree at the Cranbrook Academy of Art in Michigan. Mr. Fortbrook works in both oils and water color. Having shown his work successfully, he is head of the art department in Gateway's apprentice workshop.

FRANK L. LYON & SONS INC.

Middle Co. Road
CORAM, NEW YORK

-EDSEL & MERCURY-

Bus. SE. 2-3434
Res. SE. 2-3238



LYON FORD, Inc.

Park 7-4440-1
Res. SEden 2-3238

CHARLES L. LYON

606 West Main Street

RIVERHEAD, L. I., NEW YORK

PATCHOGUE PLATE GLASS CO.

AUTO GLASS INSTALLED WHILE YOU WAIT
Curved Windshields — Clear & Tinted Glass for Every Make of Car
Glass for Your Car Is Always in Stock — Immediate Service

GRover 5-1790

64-66 WEST MAIN STREET

PATCHOGUE

FOR
Courteous, Prompt Service
Phone
BELLport 7-0347



Head of Neck Road
Bellport, N. Y.



Smart fashions
needn't be
expensive
when you shop at
.....

Helen Ann Sanders Shop

Mildred & Freddy Kassab
57 East Main Street
Patchogue GRover 5-0146



ISLAND TRADING ANTIQUES

ST. 7-0117

Route 25A STONY BROOK, N. Y.

GRover 5-1650

MEDFORD FARM STAND

FRESH PRODUCE DAILY
— CUT FLOWERS —

Fruit Baskets Made Up Always

Route 112, Private Road
MEDFORD STATION, L. I.

A Complete Service in Corsetry
Custom and Ready Made

MARIE WEBER'S CORSET SHOP

GRover 5-3748

Route 112 Medford, L. I.

SOUTH BAY PONTIAC MOTORS, INC.

PONTIAC

CITROEN-VAUXHALL 252 East Main St.
SALES & SERVICE PATCHOGUE, N. Y.

GRover 5-0533

"Say you saw it in the Gateway Playhouse Play-bill"



FRIEDLAND FURNITURE

Colonial-Early American

ACCESSORIES — GIFTS
SAyville 4-0070 73 Main St. Sayville



BAYPORT 8-5323

BAYPORT SPORTS CAR CENTER, INC.
SALES & SERVICE

MG - AUSTIN HEALEY - MORRIS MINOR - AUSTIN

813 MONTAUK HIGHWAY
BAYPORT, N. Y.



FLORAL ARRANGEMENTS
— CUT FLOWERS —

BAYPORT FLOWER
HOUSES

Montauk Hwy. Bayport

BAyprt 8-0014

The Bookcase



40 SOUTH MAIN STREET
SAYVILLE, L. I., NEW YORK

SAyville 4-1500 ELIZABETH DWELLE

SAYVILLE
CHARLES P. DICKERSON
REAL ESTATE — INSURANCE

Homes - Waterfronts - Farms
— Business Properties —

31 Main Street SAyville 4-0164

EVANS AMITVILLE DAIRY, INC.
— MILK —
and Milk Products

WHOLESALE AND RETAIL

BLUE POINT BRANCH
TELEPHONE EMERSON 3-6020



DEL GREEN has come to Gateway from California where she has been active in television and on the stage. Having trained at the Pasadena Playhouse and U. C. L. A., she attended the Caroline Leonetti and the House of Charm Modeling Schools in San Francisco. In Hollywood she acted in the Player's Ring. At the Music Circus in Sacramento she appeared in MOST HAPPY FELLA, WONDERFUL TOWN, and THE KING AND I. Her TV credits include "Lawrence Welk Top Tunes and New Talent" and commercials for Westinghouse and Petri Wine. On the stage she has played such roles as Jenet in LADY'S NOT FOR BURNING and Sabrina in SABRINA FAIR. Del Green is director of Gateway's apprentice program.

PETER MARBLE is director of the Showcase Productions given in the Community Hall in Bellport. Here he experiments with new ideas and new talent, working with dramas fresh from Broadway and off-Broadway and reviving plays that have become world classics. Peter Marble is head of dramatics at the Pomfret School in Pomfret, Connecticut, and has directed such plays as MADWOMAN OF CHAILLOT, MERRY WIVES OF WINDSOR, and AN INSPECTOR CALLS. He graduated from Harvard and attended the Yale Graduate School.

Support Sayville Musical Workshop's
10th Anniversary Building Program
By Buying a Building Brick for \$1.00
Send checks to:

Sayville Musical Workshop
P. O. BOX 278
SAYVILLE, L. I.

"Say you saw it in the Gateway Playhouse Play-bill"

DAVIS PARK FERRY CO.

Tel. GOver 5-1665

WEEKDAYS & SATURDAYS

Mulford Street Patchogue, N. Y.

BEACH FERRY SCHEDULE

Leave Patchogue	Leave Davis Park
10:00 a.m.	11:00 a.m.
11:00 a.m.	12:00 noon
12:00 noon	1:00 p.m.
1:30 p.m.	4:30 p.m.

SUNDAYS—Boats both ways every hour on the hour

Water Taxi Service Day and Night

WEIDNER-MACKLE AGENCY

Since 1918

REALTORS - INSURORS

Bellport, New York

Telephone Bellport 7-0700

JOHN J. ROE & SON

Since 1898

REALTORS - INSURORS

Patchogue, New York

Tel. GOver 5-4000



The Bellport National Bank

Station Road

Bellport, N. Y.

Open Monday Evening 6:00 to 8:00 p.m.



Convenient Parking - Friendly Service

WHERE YOUR DOLLARS MAKE SENSE

Member Federal Deposit Insurance Corp.