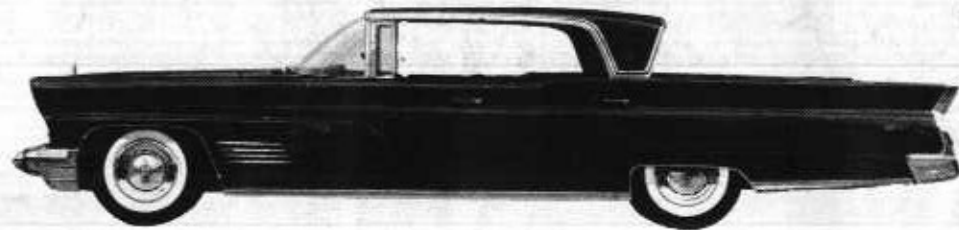


Lincoln Continental for 1960

A new peak of perfection for America's finest motorcar



1960 MERCURY



America's first popular price luxury car

Among the Family of Fine Cars

AMERICAN and IMPORTED

MAGNIFICENTLY DISPLAYED AT

**ZEIDLER
MOTORS,
INC.**

ROUTE 112 MEDFORD, N. Y.

GRover 5-2900

RENAULT - COMET - PEUGEOT

LARK by STUDEBAKER

Sales and Service

"Over an acre of prime used cars to choose from"

Call now

Gateway Playhouse

BELLPORT, LONG ISLAND, NEW YORK



LONG ISLAND'S LEADING
SUMMER THEATRE

Professional Equity Companies

WHEN YOU BUY ELECTRICITY A NICKEL IS STILL A LOT OF MONEY

Today a nickel doesn't go quite as far as it did when we were youngsters — unless you are talking about electricity. While your total electric is probably higher, because most folks are using more electricity than ever before, the cost per kilowatt hour is 12% lower than it was 10 years ago. You can actually buy more electric service with that nickel than your parents ever did.



SERVED BY THE PATCHOGUE ELECTRIC LIGHT COMPANY SINCE 1886
SOUTHERN SUFFOLK POWER SYSTEM



Babe

"A WHOLE CITY BLOCK"
of Reconditioned Used Cars
at the Right Price

3/00
L79



CHEVROLET **PETER J. GRADY**
Before you Buy, Give Grady a Try
 118 MONTAUK highway W. SAYVILLE, N.Y. SAYVILLE 4-3100




HELEN VOLINO

SMART FASHIONS AT COMPETITIVE PRICES
Come in and try on our things - No Obligation

WEARING APPAREL and GIFTS
Main Street

Bellport 7-0780

Bellport, N. Y.

THE
BELLPORT
NATIONAL BANK
BELLPORT, NEW YORK



CONVENIENT PARKING — FRIENDLY SERVICE
WHERE YOUR DOLLARS MAKE \$ENSE



"OUR ADVERTISERS REPRESENT RELIABILITY — PATRONIZE THEM"

Gateway Playhouse



SOUTH COUNTRY ROAD
BELLPORT, L. I., N. Y.

BOX OFFICE BE 7-1133

"LONG ISLAND'S FOREMOST SUMMER THEATRE"

1960 marks a turning point in the history of Gateway Playhouse. While all other EQUITY summer theatres on Long Island have shut their doors, Gateway continues as an Equity operation with many new and exciting changes. The theatre auditorium has been completely re-decorated with new seating for good viewing. A brand new stage has been constructed to create an intimacy between the actors and the audience and yet retain all the magic and illusion of Broadway staging. A new refreshment terrace has been created which is open all day as well as during intermission. Cool fountain specialties and charcoal broiled hamburgers are featured.

In selecting the guest stars for our 1960 season, we have taken actors who are the best suited for the roles. We do not believe in casting famous personalities who do not know how to act. Gateway performers come to Bellport directly from their Broadway, screen, and television assignments.



We are proud of our pleasant association with the Guild Hall in East Hampton, Long Island. Gateway productions can be seen at the John Drew Theatre, America's most beautiful summer playhouse. For information concerning the East Hampton schedule, you can inquire at the box-office.

"EQUITY" is the stamp of professionalism in Show Business. Equity theatres necessarily follow the high standards set by this union. All Broadway shows are produced with Equity actors as at Gateway. The best actors in the profession are members of Equity. Gateway Theatre is the ONLY summer theatre on Long Island that maintains a resident company of EQUITY actors.

We are grateful to you, the audience, for your continued support and comments. You have proven to us that the living theatre will never die. It is our plan to bring to you each week the very best that Broadway has to offer.

If you are not on our mailing list, please sign the guest book in the lobby.

IN THE LOBBY
AT INTERMISSION
REFRESH WITH PEPSI



Be Sociable, Have a
Pepsi



WANT MORE FOR YOUR MONEY
...KEEP YOUR EYE ON GRANTS



SUMMER-IZE AND SAVE

GRANTS LOW PRICES STRETCH VACATION
BUDGETS OVER ALL YOUR FAMILY & HOME NEEDS

PATCHOGUE, L. I.

Use any one of Grants 3 "Charge-It" Plans. No money down.

EVERYTHING FOR YOUR DREAM HOUSE
FROM LONG ISLAND'S MOST COMPLETE
LUMBER YARD
FINANCING. PLANS, FREE ESTIMATES



For Same Day Delivery



Telephone GROVER 5-3232

"Have It Done By Drubm"

AL DRUHM & CO.

HEATING - AIR CONDITIONING - FUEL OIL

EMerson 3-6484

118 North Division Avenue

BLUE POINT

SWEZEY FUEL CO., INC.

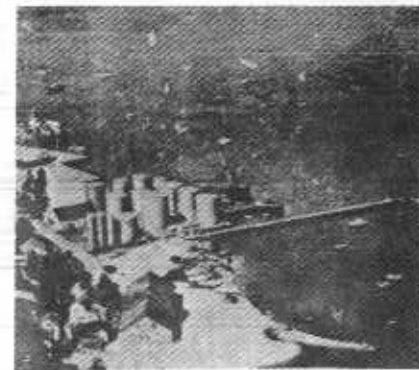
HEATING OIL and OIL BURNERS

Oil Burners — Heating Systems Installed and Serviced

RIDER AVENUE GROVER 5-0270 PATCHOGUE

BEACH STREET PORT JEFFERSON

POrt Jefferson 8-0555



THE PRODUCERS

HARRY C. POMERAN established the Gateway in 1941 after a successful career in the business world. Because of his careful business management he holds the distinction of being one of the few producers who have kept their summer theatres operating successfully for more than ten years. Active in the fashion, entertainment, and hotel fields, he has built a wealth of good will for the Playhouse. Mr. Pomeran is a member of the Patchogue Rotary Club, the Chamber of Commerce, is a pastmaster of his Masonic Lodge, and was active in trade associations and the N. Y. Board of Arbitration.

DAVID SHELDON has been directing plays at Gateway since 1950 and is responsible for the artistic policy of the Playhouse. A former actor who began his career in summer stock at the age of 16, Mr. Sheldon made his off-Broadway directing debut with "The Skin of Our Teeth." He since has emerged as one of New York's most exciting young directors, his assignments having included "Dark of the Moon," "The Happiest Millionaire," and "The Diary of Anne Frank." After studying playwriting with Robert Penn Warren at the Yale Drama School where he received an MFA degree, David Sheldon has spent a good portion of his winters writing for television. He has acted in New York, Texas, and England and his most recent TV credit was Hemingway's "Fifth Column" on CBS.

STAN ALLAN has joined Gateway Playhouse as co-producer in charge of publicity, public relations and the supervision of personnel. Prior to his affiliation with Gateway, he served as station manager of Radio Station WPAC, Patchogue, and became distinguished as one of Long Island's best known radio personalities. Previously he was director of programs at WCOJ, Philadelphia. Stan Allan was associated with the Mike Wallace Interviews, the Dave Garroway Show and WOR-TV (Channel 9) and has done free lance TV commercials. He is married to the popular stage and screen actress Ruth Vickers.



PLAYHOUSE STAFF

Business Manager	Harry C. Pomeran
Promotion and Personnel Manager	Stan Allan
Director	David Sheldon
Production Designer	Frank Albright
Stage Manager	James Martin
Choreographer	Carolyn Bilderback
Musical Director	Frank Seibert
Master Carpenter	Otto Kress
Acting Coach	E. J. Poggi
Workshop Director	Peter Marble
Student Advisor	Jeanette Seibert
Photography	TEC
Box-Office Treasurer	James Mee
Accountant (CPA)	Jacob Simon & Assoc.

CI-4
6017



FORD

RIVERHEAD, N. Y.
PARK 7-4440

LYON
SALES — SERVICE

THE BIG



COMET

CORAM, N. Y.
SELDEN 2-3553



IRVING BELLER, part of the successful team known as Sybelle Carpets, has just completed a wonderful move to a bigger show of fine quality floor covering at 464 East Main Street, in Patchogue. Irv has a well-rounded background in the floor covering business and always gives his best in every appearance. He is married and the father of four children. When looking for the best see Irv at Sybelle Carpet, directly opposite Safeway in Patchogue. Atlantic 9-1112.



JERRY BELLER is the other half of the Sybelle Carpet team of fine performers. He resides in Patchogue with his wife and three children. Jerry has had many years of floor covering experience, the reason so many people give rave notices on his excellent ability to offer good service and quality plus the best price. Also in the cast of Sybelle Carpet is Howard Houston, Al Kattau, Harold Overton, Howard Funk and Stan Beller of the Commack store. See them soon at Sybelle Carpet's new store, 464 East Main Street in Patchogue. Atlantic 9-1112.



AM 1580 KC WPAC - - FM 106.1 MC

COMING SOON
WAPC RIVERHEAD
1570 KC

Long Island's Leading Radio Stations
Powerful 10,000 Watts, Patchogue, N. Y.

"The Gateway to Summer" at the Bee Hive is a bandana-draped invitation to your Summer of Summers on Long Island. Visit our "Gateway" Booth, First Floor . . . open daily with discount privileges for summer theatres, restaurants . . . information on bathing beaches, historical spots . . . where to go and what to do this Summer.

the **BEE HIVE** of Patchogue

East Main Street, Patchogue, New York

GRover 5-9000

"OUR ADVERTISERS REPRESENT RELIABILITY — PATRONIZE THEM"

THE SHOWS

"If you missed them on Broadway, see them at Gateway."

The most exciting line up of plays ever assembled in one season. Each comes to the Gateway stage with a guest star and a company of Equity actors.

(Schedule subject to change. Consult any Sunday newspaper for up-to-date play listings.)

JULY 4 (MONDAY) thru JULY 10
Jeffrey Lynn repeats the role in which he starred on Broadway. An adult love story-- both moving and funny.



Jeffrey Lynn
and SHEILA COPELAN

Two for the Seesaw

"WILLIAM INGE'S BEST PLAY!"

THE DARK
AT THE
TOP OF
THE STAIRS



A powerful drama full of warm humor starring BARBARA LESTER and TV's STUART GRAYMOUNT. By the author of PICNIC, BUS STOP, & COME BACK LITTLE SHEBA. Set in the Mid-West. Playing JULY 12 thru JULY 17.



GOLDEN FLEECING

A wild scheme to outwit the U.S. Navy and defraud a gambling joint... full of many laughs.....

This TOM POSTON comedy-hit was cheered by the New York critics. This excursion into madness and hilarity is scheduled for JULY 19 thru JULY 24.

At Gateway JULY 26 thru JULY 31
Starring RONALD DAWSON

"DON'T MISS IT!"
"A Marvelous Play"
LOOK
HOMEWARD,
ANGEL



PULITZER
PRIZE

JOSEPH HARDY
in

SUNRISE
AT
CAMPOBELLO

The warm and humorous story of Franklin Delano Roosevelt, his home life, and problems prior to becoming President.

A highlight of the summer season
AUGUST 2 thru AUGUST 7



"REDHEAD"
A NEW MUSICAL COMEDY

Special Star

ELLIE ROSS

6 TONY AWARDS

A romantic murder-mystery-musical called by Dorothy Kilgallen "bright, tasteful, tuneful, cheerful." Good fun. AUGUST 9 thru AUGUST 21.

AUGUST 23 thru AUGUST 28
Raw and shocking... full of passion and violence.... a blockbuster. A powerful play by the top playwright.

TENNESSEE WILLIAMS'
"BIGGEST, MOST EXHILARATING JOLI OF THE SEASON. SHAKES THE THERM"



No children admitted.

"ONE OF THE BEST MUSICALS OF THE CENTURY!"

Salad Days



Direct from its run of six years in London, SALAD DAYS is the longest running musical in the World, surpassing MY FAIR LADY and OKLAHOMA. A madcap satire on Beatniks and the young generation. AUGUST 30 thru SEPTEMBER 11.

ABOUT OUR ADVERTISERS

The advertising subscribers whose products and services you see displayed throughout this program are deserving of your patronage. These progressive business men and women recognize the prestige and prime opportunity to present their messages to a select and distinguished audience of prospective clients.

They also demonstrate by their representation a genuine desire to promote culture in the community. The presence of a professional summer theatre in a society attests to its economic importance, its underlying residential growth potential and its emergence as a focal point of cultural development in the surrounding area. Living theater may indeed be proud of these community minded men and women of high caliber whose representation in the Playbill we gratefully acknowledge.



George C. Haegele

LICENSED ELECTRICAL CONTRACTOR

FOR YOUR HOME,
YOUR BUSINESS
OR INDUSTRY

PHONE GROVER 5-4738

PATCHOGUE PORT JEFFERSON RD.
MEDFORD, NEW YORK

"Suffolk's Only Decorating Dept. Store"
CLEAR-VIEW & FIALA

Incorporated

PAINTS — WALLPAPERS

ARTISTS SUPPLIES — UNPAINTED FURNITURE

212 East Main Street

Next to Sears in Patchogue

GRover 5-3165



BOHACK
... Where Better Meals Begin



UTILITY LINES, INC.
CHARTER COACHES

FOR

THEATRE PARTIES — SPECIAL OCCASIONS

For The Best Way To Get There

CALL:— UTILITY LINES

GRover 5-2524

BELLPORT — AAA

HAWKINS GARAGE

Immediate Emergency Repairs

Towing — Courteous Service

Opposite Post Office
Irv Terwilliger

BELLPORT 7-0185
Cliff Miller

GROVER 5-4850

Patchogue Marine

OUTBOARD BOATS - MOTORS & ACCESSORIES

14 to 20 ft. PLYWOOD — FIBERGLAS
AND LAP STRAKE MODELS

89 Route 112
PATCHOGUE, L. I., N. Y.

1/2 Mile North of
SUNRISE HIGHWAY

Oak Park
NURSERIES, Inc.



LESLIE S. MAC ROBBIE, Pres. - E. PATCHOGUE, LONG ISLAND, N. Y.

STAUFFER PIANO CO.

Lester - Betsy Ross Spinets

Lowrey Organs — Pianorgans

208 MEDFORD AVENUE
PATCHOGUE, N. Y.

PHONE GROVER 5-2674

I. SMITH & SONS, INC.

Wholesale Distributors of Plumbing and Heating Supplies



Water Pumps - Oil Burners
GR 5-3710

152 Medford Ave. Patchogue, N. Y.

ROLIC, INC.

Manufacturers of Juvenile Playclothes

Visit Our Outlet Store in the Rollic Building for Guaranteed Savings

400 EAST MAIN STREET

PATCHOGUE, NEW YORK

THE COMPANY

(Resident Actors and Advanced Apprentices)

Joseph Walker, Audrey Perla, Vivian Kahan, Marco Figueroa, Douglas Armand, Sue Martin, Raymond Banacki, Franklin Jones, Deborah Amussen, Joyce Cohen, Herman Poppe, Steve Semmelmeier, Cynthia Lasky, Lillian Ashworth, Sheila Kupperman, Joel Novack, Mary Louise Scaffidi, Edward Thomas, Inez Parker, Blair Brooks, Frances Butterfield, Jerry Nelson, Jack Nicholson, Pat Seibert, Zellie Auerbach.

PETER MARBLE serves in the dual role of actor and co-director at Gateway. He was responsible for initiating the Showcase Theatre in the Bellport Community Hall. Here plays are presented weekly by the students from Gateway's drama school. Performances are attended by the general public, invited guests, and talent scouts. Mr. Marble directed "Blue Denim" and "Madwoman of Chailot" last season.

E. J. POGGI is Gateway's gifted acting coach and a director of the student workshop operated on the property next to Gateway Playhouse. His background includes a B.A. from the University of San Francisco, an M.A. from Harvard, and work toward a Ph.D. from Columbia University. Mr. Poggi teaches at the Herbert Berghof Acting Studio in New York City and is a director and instructor of dramatic arts at Cooper Union.

AUTHORIZED RADIO
& TELEVISION SERVICE

HONEST TV & RADIO REPAIRS

Phone: GRover 5-2993

— at the right price —

294 East Main St. Patchogue, N. Y.

COR-ACE ATLantic 1-8744
LUMBER, INC. Financing
Hardware - Mason Material - Paints
Electrical Supplies
Mastic Beach Road Mastic Beach

LUCAS PHARMACY
LEWIS KNIGHT Ph.D.
Prescription Specialists
BELLPORT LONG ISLAND, N.Y.

Emergency Phone
Bellport 7-0079 Bellport 7-0838

"Reliability Since 1900"

TIGHT ROOFS McRAE BROS

— Roofing — Siding — Insulation — Aluminum Windows — Awnings

GR 5-4200 HA 7-2746 PA 7-2859 MO 9-1344
EAsT Hampton 4-0212 SOuthampton 1-0113

BRONCO CHARLIE'S

ORIGINAL LOG CABIN RESTAURANT

Specializing in Sauerbraten and Dumplings

OPEN EVERY DAY SPECIAL PORTIONS
11 A.M. TO 10 P.M. FOR CHILDREN

SAYville 4-1132

MONTAUK HIGHWAY OAKDALE, N. Y.



BIANCO MOTORS, INC.

AUTHORIZED SALES and SERVICE
DELIVERIES HOME AND ABROAD



AUTHORIZED DEALER

4120 SUNRISE HIGHWAY
SAYVILLE, N. Y.

TELEPHONE SAYVILLE 4-0805

WARM AIR
Furnace, Oil Burner,
Controls, Ducts,
Fuel Tank
\$750

INSTALL HEATING SYSTEMS NOW
AVOID WINTER INCONVENIENCE
COMPLETE INSTALLATION BY

HOT WATER
Boiler, Burner, Con-
trols, Circulator,
Radiators, Fuel Tank
\$885



PLUMBING and HEATING, INC.

PATCHOGUE N. Y.

GRover 5-1667
27 MEDFORD ROAD

"OUR ADVERTISERS REPRESENT RELIABILITY — PATRONIZE THEM"

HARRY C. POMERAN — DAVID SHELDON — STAN ALLAN

present

Mel Haynes in Make A Million

by NORMAN BARASCH and CARROLL MOORE

— with —

Vivian Lester - Hal Godett - Jeannette Seibert - Jerry Nelson - Tim Kennedy

Musical Direction
FRANK SEIBERT

Designed By
JIM LESTER

Choreography By
CAROLINE BILDERACK

Directed by
DAVID SHELDON

— Cast of Characters —

JULIET	MARY LOUISE SCAFIDI
JULIE MARTIN	VIVIAN LESTER
BETTY PHILLIPS	JEAN McCLINTOCK
GEORGIANA WINTERS	CAROLINE BILDERBACK
BLANCHE WINTERS	DEBORAH AMUSSEN
CLAIRE MANNING	JEANNETTE SEIBERT
SID GRAY	MEL HAYNES
HOWARD CONKLIN	ELWOOD WILLIAM
BERNIE LEEDS	CHARLES THOMAS
HAROLD FAIRBANKS	E. J. POGGI
MR. MERGENTHALER	HAL GODETT
GENERAL POTTER	TIM KENNEDY
LT. FRIEDLANDER	JACK NICHOLSON
PRIVATE FERRIS	WOODY
PRIVATE KING	JERRY NELSON
CORPORAL REEVES	PHIL MATTINGLY
POLLY MERGEN	CYNTHIA
JUNE COLLINS	JANE GRIFFIN
HENRY WHIPPLE	PHIL MATTINGLY
REARDON	ELWOOD WILLIAM

"OUR ADVERTISERS REPRESENT RELIABILITY — PATRONIZE THEM"

THE PEOPLES NATIONAL BANK OF PATCHOGUE

CORDIALLY INVITES
YOUR ACCOUNT



115 EAST MAIN STREET
PATCHOGUE, N. Y.

DRIVE-IN DEPOSIT WINDOW — EASY PARKING
MID-ISLAND OFFICE — Route 25, SELDEN, N. Y.

Member Federal Deposit Insurance Corp

WALK fm 97.5 mc 15,000 w.
WALK 1370 kc 500 w.
WRIV 1390 kc 1000 w.

SUFFOLK BROADCASTING CORPORATION



GRover 5-5200

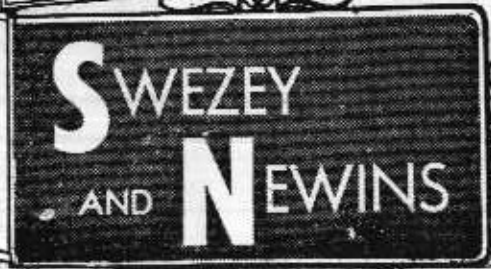
WALK — P. O. BOX 230 — Patchogue, L. I., N. Y.

WALK - 1370 kc. • WALK-FM - 97.5 mc. • WRIV - 1390 kc.



YOUR DEPARTMENT STORE IN PATCHOGUE

GRover
5-0280



SERVING SUFFOLK
SINCE 1894



536 EAST MAIN STREET
PATCHOGUE, N. Y.

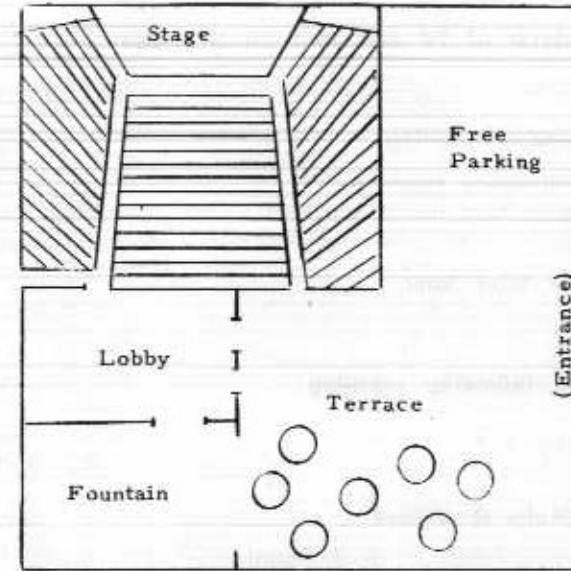
Open Weekdays 7:30 A.M. to 5 P.M.—Fri. to 8 P.M.

DIRECT SOURCE FOR
LABOR & MATERIALS
TO HOMEOWNERS

Headquarters of Operation
"HOME IMPROVEMENT"
Finances Arranged: Construction, Garages,
Basements, Improvements

GRover 5-1830

PLAYHOUSE SEATING PLAN



TICKET INFORMATION

Individual seats: \$1.85 \$2.50 \$3.30
Saturday Nights: 2.50 3.30 3.85
Saturday Bargain Matinee (children 1/2 price)

CURTAIN 8:30 Sat. Matinee 2:15

BUY A BOOK OF 10 \$2.50 tickets for only
\$20.00 — SAVE \$5.00

20% DISCOUNT FOR THEATRE PARTIES

Information at the Box Office or
phone Bellport 7-1133



FIRE NOTICE:—The exit indicated by a red
light and sign nearest to your seat is the short-
est way to the outside. If you must use this
door, please DO NOT RUN — WALK TO THAT
EXIT.

THE PEOPLES MATH
OF PATCHOGUE

a producer of TV quiz and panel shows.

- 1: Monday morning.
- 2: Wednesday morning.

One hour later.

The following morning.

- for "Make A Million"
- Manager E. J. Poggi
 - Director Lillian Ashworth
 - Mary Louise Scafidi
 - Jane Griffin

ed and arranged by the performers involved.
and shows living or dead is purely co-incidental.



ement of Gateway Playhouse wishes to thank you,
e, for your attendance and support this season.
lp us by giving us your comments on the shows,
etc. How can we make you more comfortable?
of show would you like to see next season? What
advertising do you recommend? Are you on our
?

d for your comments
ion box in the Lobby.

INC. Among the Family of Fine Cars
- Renault — Comet — Peugeot — Lark by Studebaker
GRover 5-2900 **MEDFORD, N. Y.**

"OUR ADVERTISERS REPRESENT RELIABILITY — PATRONIZE THEM"

"Kitchen Center"



- F** A COMPLETE SERVICE
- Kitchen Cabinets
 - Exhaust Fans
 - Formica Tops
 - Hoods
 - Vanities
 - Installation

AT 6-9270
AT 9-1145

Free
Estimates
Financing
Arranged
NO JOB TOO SMALL
VISIT OUR
Showroom & Factory

(4 Miles East of Patchogue)
MONTAUK HIGHWAY

BELLPORT, N.Y.

BARRIE
Bros., Inc.

"THE STANDARD OF THE WORLD"



CADILLAC — OLDSMOBILE

EAST MAIN STREET

PATCHOGUE, N. Y.

Maletta's INC.

TV — Sales & Service

TV - APPLIANCES - HI FI
210 Medford Avenue
PATCHOGUE, L. I.

Magnavox — Hi Fi &
Stereophonic Sound
Hot Point — Kelvinator
Frigidaire — RCA Whirlpool

GE — Color TV
GRover 5-8300

PUBLIC ADDRESS & STEREOPHONIC SOUND SYSTEMS
AT GATEWAY INSTALLED BY MALETTA

Mid-Island Lumber & Supply Co., Inc.

Lumber and Mason Material
Free Delivery Anywhere in Suffolk County

Patchogue-
GRover 5-0914



Riverhead-
Park 7-2430

415 ROANOKE AVE., RIVERHEAD, L. I.

"OUR ADVERTISERS REPRESENT RELIABILITY — PATRONIZE THEM"

Air Conditioned Free 21" TV

Patchogue Motel

RESTAURANT & COCKTAIL LOUNGE

Show Place of Long Island

EMERSON 3 { 6880
 { 8880 SUNRISE HIGHWAY

GR 5-2071

BEN'S GLASS SERVICE

All Types of Safety Glass
Curved or Tinted

We Specialize in Auto Glass

138 Medford Avenue Patchogue

PATCHOGUE FORD

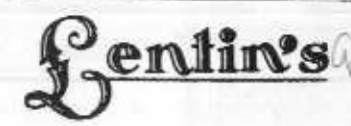
FALCON — FORD — THUNDERBIRD — FORD TRUCKS



501 Medford Avenue GR 5-1133

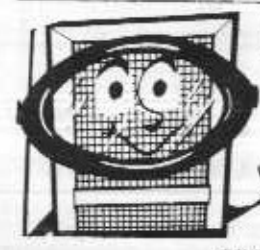
ARCH PRESERVER SHOES

PATCHOGUE NEW YORK



DRESSES - GOWNS - SPORTSWEAR
COATS - SUITS

45 E. Main St. PATCHOGUE 54 E. Main St. RIVERHEAD



SCONZO & SONS

Aluminum Storm Windows

SHOWROOM
457 E. MAIN STREET
PATCHOGUE, L. I.

GROVER 5-0020

er of TV quiz and panel shows.

lay morning.

uesday morning.



JEFFREY LYNN has long been regarded by playgoers, movie fans, and television viewers as one of our most refreshing personalities. A comparative captive of the Hollywood sound stages, with regular excursions into the living theatre, Mr. Lynn has had his full share of success on the Broadway rostrum including, "The Long Days" and "Lo and Behold." After a major triumph as Jerry in "Two for the Seesaw" on Broadway, he flew to Hollywood to film "Butterfield 8" with Elizabeth Taylor (soon to be released). Gateway is proud to have him repeat his Broadway starring-role in "Two for the Seesaw."



ELLIE ROSS has emerged as an international musical-comedy personality in only a few years, captivating audiences in "My Fair Lady," "Showboat," "Can-Can," "Pajama Game" and many others. Her one woman musical revues have toured all over the United States, Canada, South America, and Nassau including the most prominent clubs and hotels. Her many New York TV appearances have included: The Play of the Week, US Steel, Studio One. Ellie Ross appears as Essie in REDHEAD after scoring a success as Sharon in FINIAN'S RAINBOW. She is equally competent as a dramatic actress.



JOSEPH HARDY has achieved prominence on Broadway in such productions as "Detective Story," "Mr. Roberts," "The Male Animal," and the most recent "Cut of the Axe." Having been a standby for Ralph Belamy, who has just completed filming "Sunrise at Campobello," Mr. Hardy is perhaps the most ideal candidate for the role of Franklin Delano Roosevelt. Television audiences have seen him on "The Secret Story," "Edge of Night," and "New York Confidential." He recently completed the filming of a new TV series called "The Playboy" with Steve Cochran.

JIM MARTIN is at the center of all Gateway Playhouse productions because as Stage Manager he functions as a liaison between all members of the production staff. Lighting, sound, props, rehearsal schedules, construction, assistant directing, and a hundred other elements of production are managed by him. Mr. Martin has worked in theatres across the country including the Playhouse Theatre in Houston, Texas, and the Allenberry Playhouse in Pennsylvania. He is a skilled actor and has directed such productions as "LeMoientendu" by Camus, and "Bus Stop."

"A Nice Place To Do Business"

HOLZ MOTORS

LATE MODEL USED CARS

E. Main St. at Evergreen Avenue
Patchogue, N. Y. GROVER 5-4477
Where Good Cars Get Together

Cardinal CARPET SHOP

LINOLEUM—FLOOR AND WALL TILE

JOHN F. DERBY OFFERS HONEST VALUE
89 EAST MAIN STREET GR 5-1333 PATCHOGUE

QUARTLIER'S GARDEN CENTER

Garden Supplies — Nursery Items
Specializing in Landscaping and Lawns
WE GIVE BLUE STAMPS

Montauk Hwy. Bellport, L. I. AT 6-9233

George's

RADIO & TELEVISION SHOP
SALES AND SERVICE
RECORDS - PHOTO - HI FI - STEREO
ANTENNA INSTALLATIONS

SOUND SYSTEMS
66 MAIN ST. SAYVILLE, N. Y. 66 N. OCEAN AVE. PATCHOGUE, N. Y.

GRover 5-2531

STANLEY'S Bedding and Furniture Co.

Patchogue's Leading Furniture Store

44 East Main St. Patchogue



Patchogue Power Tool Co.

Rentals - Sales - Repairs

Floor Sanders - Power Mowers
All Power Tools

298 MEDFORD AVE. PATCHOGUE, N. Y.
ADVERTISERS REPRESENT RELIABILITY — PATRONIZE THEM"

Patchogue Motel

Step Plans at Patchogue Motel

OR 3-9371

GEN'S GLOSS SERVICE

All Types of Safety Glass
Cut and in Frames

We Specialize in Auto Glass

139 Montauk Highway

Patchogue

CLUB RESTAURANT

Rose, Manager Bar and Cocktails
— Delicious A La Carte
LUNCH AFTER THEATRE
10 P. M. Fri., Sat., Sun. til 12 P. M.
Near Village Golf Course.
Atlantic 6-9862 Bellport, N. Y.

CIRO'S

Italian Food at its Best
STEAKS — CHOPS — SEAFOOD
Complete Dinners Served Till 1 A. M. Fri. & Sat. Nights
Sunrise Highway Islip Terrace
2 BLKS. EAST OF RTE. 111 JUNIPER 1-3100

"A Good Place to Eat —
Where Old Friends Meet"



On Montauk Highway E. Patchogue

AT 4-0803

COLONIAL ARMS RESTAURANT

Where Dining Is a Pleasure
Not an Extravagance
Steak — Chops — Lobster — Sea Food
Montauk Highway Center Moriches

RO 9-8986

LAKE VIEW INN

One of L. I.'s Picturesque Restaurants
Dancing Saturday to Jimmy Jines Band
Paul at the Organ—Fri - Sat - Sun
Private Beach Boating Bowling
Lake Shore Road Lake Ronkonkoma

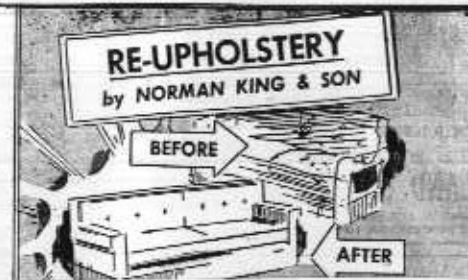
THE LINDENMERE

HOTEL and RESTAURANT
Summer Resort on the Water
Featuring Deluxe Swimming Pool
2 1/2 ROOM UNITS FOR SUMMER OR WINTER RENTAL
Center Moriches AT 4-0553

"SAY YOU SAW IT IN THE GATEWAY PLAYHOUSE PLAY-BILL"



For Gracious Dining



Adjacent to Mid-Island Upholstery
PATCHOGUE
Top MARINE INC.
DESIGNERS & MANUFACTURERS
BOAT CUSHIONS - WINTER COVERS
NAVY TOPS - PILOT SEATS
CABANA - SWIMMING POOL COVERS
Grover 5-2863
348 E. MAIN ST.

Canoe Place

ONE OF LONG ISLAND
Luncheon — Cocktails — Dinner
Entertainment Nightly
ROOM ACCOMMODATIONS — BANQUET FAC
MONTAUK HIGHWAY

"IF IT'S FROM



Patchogue — Riverhead
YOU KNOW IT'S GUARANTEED"

Cool, Delightful Dining
on the Shores of the Connetquot River

Snapper INN

Shore Drive Oakdale
SAyville 4-0248

RIDGELY'S

FABULOUS STEAKS

WATER MILL, L.I.

MUSIC, DANCING NITELY

LAND'S END MARINA MOTEL

Come by Land or Sea
Dockage — Pool — Fishing Station
Cool Restful Efficiencies
Day, Week, Month, Season
70 Browns River Road SA 4-2040
NEXT TO LAND'S END RESTAURANT

LAND'S END
One of Long Island's Finest
RESTAURANT
Member Diner's Club and American Express
"on the bay"
SAYVILLE, N. Y.
Reservations SAYville 4-1888

Deli - King

Luncheon & Dinners
The Best Hot Corned Beef
and Hot Pastrami Sandwich
in Suffolk County

85 W MAIN STREET
PATCHOGUE, N. Y.

GROVER 5-9744

Donato's RESTAURANT

ITALIAN AND AMERICAN CUISINE
PIZZA PIES OUR SPECIALTY
SOUTH COUNTRY ROAD
EAST PATCHOGUE, L. I., N. Y.

ORDERS TO TAKE OUT PHONE GROVER 5-3366



JOHN J. ROE & SON

INSURANCE — REAL ESTATE

Since 1898

Main Office
125 East Main St.
PATCHOGUE, N. Y.
GRover 5-4000

Branch Office
118 Main Street
BELLPORT, N. Y.
Bellport 7-0700



DIVIDENDS FROM DAY OF DEPOSIT . . . COMPOUNDED QUARTERLY



The UNION SAVINGS BANK
OF PATCHOGUE, N. Y.

Corner So. Ocean Ave. and Church St. Tel. GR 5-5800

Banking Services 9 A.M. to 6 P.M. Daily Except Sat., Fri. Eve. 6:30 to 8 P.M. Member FDIC

CLUB RESTAURANT

ALL TYPES OF SAFETY GLASSES
Corrected as Desired
We Specialize in Auto Glasses
137 Bedford Street Patchogue

Arena Stage in Washington, D. C., and stock Playhouse. Acting in many types of roles from Jannet in "Lady's Not for Burning" to Patty in "The Moon Is Blue," Miss Lester is one of the most versatile actresses on the American stage.



RONALD DAWSON is certainly a name familiar to Broadway theatregoers. His Broadway stage credits include "Witness for the Prosecution" and "The Sleeping Prince" and his many screen appearances have ranged from "Mutiny on the Bounty" to the recent "Odds Against Tomorrow." Mr. Dawson has been seen in over 500 major television shows including US Steel, Armstrong Circle Theatre, and the Goodyear Playhouse. Born in Johannesburg, South Africa, Ronald Dawson was trained in the British Empire. His stage success also include "Middle of the Night" and "Silk Stockings."



SHEILA COPELAN, acclaimed as one of the most exciting young actresses in the profession, has studied acting with Lee Strasberg (Actors Studio). She has appeared in "Member of the Wedding" and "Charley's Aunt" and her television credits include "You Are There," "Frontiers of Faith" and "Mr. Peepers." Children will remember her as "Penny" from Storyland on the "Funny Bunny Show." Gateway Playhouse is fortunate to have Sheila Copelan direct from her successful run of "Two for the Seesaw."

FRANK SEIBERT is an accomplished musician as well as a successful musical director, having played with a number of bands and orchestras in New York. He has appeared in many hotels, night clubs, and on television ("Masquerade Party"). Theatre audiences know Frank Seibert mainly for his musical direction of "Bells Are Ringing," and "Say Darling." He recently directed "Showboat" for Theatre 5 in Huntington and is Director of Music for Central School District No. 5. At Gateway he is staff musical director and vocal coach.

RE-UPHOLSTERY
by NORMAN KING & SON

BEFORE AFTER

CUSTOM SLIP COVERS
Expertly cut and fit to the seat, wavy, decorative, or tufted. You wear no tape, glue, or staples. Choice of cloth, leather, vinyl.

FINEST QUALITY REUPHOLSTERY
CUSTOM SERVICE BY EXPERT CRAFTSMEN - FINEST FABRICS AT MODERATE COSTS. FREE BOBBY'S INSURANCE ESTIMATES —

FREE ESTIMATES - CONVENIENT TERMS

NORMAN KING & SON
BELLPORT AVE. 117-119 PATCHOGUE - (E. of S. of SUNRISE HWY.)
GROVER 5-1042

OPEN MON. THURS. FRI. 10 to 6 P.M.
SAT. 10 to 5 P.M.
SUN. 12 to 5 P.M.
FREE PARKING

Adjacent to Mid-Island Upholstery PATCHOGUE

Top MARINE INC.
DESIGNERS & MANUFACTURERS

BOAT CUSHIONS - WINTER COVERS
NAVY TOPS - PILOT SEATS
CABANA - SWIMMING POOL COVERS

GRover 5-2863
348 E. MAIN ST.

"IF IT'S FROM

Havils JEWELERS

Patchogue — Riverhead
YOU KNOW IT'S GUARANTEED"



ANVIL - BELL FENCES

For Safety — For Lifetime Use
We Furnish, Deliver and Install

GRover 5-1917

Waverly Ave. Patchogue

Suffolk's Only Men's Formal Wear
Specialty Shop
R. S. V. P.
Rental — Sales

Sunrise Highway Islip, N. Y.
Juniper 1-4500

Anglia — Zephyr Six — Consul
Convertibles — Station Wagons
Thames Trucks
English Built FORD The New Zodiac
HAYMAN'S AUTO SALES and SERVICE
New and Used Cars
GRover 5-0846
207 East Main Street Patchogue

CARL and BOB'S
OUTDOOR STORES
"Leisure Wear of Distinction"
MEN — BOYS
Main Street
Patchogue Riverhead

MUFFLER KING INC.

Call Atlantic 6-9893
MONTAUK HWY., BELLPORT

LIFETIME GUARANTEED MUFFLERS

Branches:
Brooklyn
Bronx
Jamaica
Yonkers

Bob Ritchie's Boat Yard
Marine Supplies - Storage

Scott Outboard Motors

CRUISERS, BOATS, TRAILERS, CUSTOM SKIFFS

168 WEST AVENUE PATCHOGUE, N. Y. Tel. GR 5-1609

GROVER 5-0445

South Shore Convalescent Home

KATHERINE MCPEAK, R.N. 286 NORTH OCEAN AVENUE
JAMES MCPEAK, R.N. PATCHOGUE, NEW YORK

MAYER'S *Flower's Cottage*

399 Medford Ave. - Patchogue, N. Y. - GR 5-1779

MAZZOTTI and RUSSO, INC.
Licensed
Plumbing - Heating and Air Conditioning
Deep and Shallow Well Pumps
GR 5-4245
30-32 Railroad Ave., Patchogue

GULF
SOLAR HEAT heating oil

DENNIS MAUD TREE EXPERT CO.

COMPLETE TREE SERVICE

Diagnosis Without Charge

Pruning — Fertilizing — Tree Removal — Spraying

Tree Surgery — Tree Moving — Poison Ivy Control

615 East Main Street

GRover 5-1233 — 2880

Patchogue, L. I.

Richard York Daniel Green
Dr. Posner Red Cross Shoes
Roblee Florsheim **Shoes** Cobbies
 14-22 SOUTH OCEAN AVENUE
 PATCHOGUE, L. I., NEW YORK

BELLPORT LAUNDRY
 EXPERT DRY CLEANING
 Head of Neck Road Bellport, N. Y. Phone BELLport_7-0347

MORLEY'S FLOWERS
 Flowers for All Occasions
 Member Florist Telegraph Del. Ser.
 Tel. GRover 5-1980 Patchogue

BUY WITH CONFIDENCE USE A NAME BRAND

THE SHERWIN-WILLIAMS CO.
 PAINTS, VARNISHES, LACQUERS, LEADS, OILS, ENAMELS, BRUSHES AND PAINTERS' SPECIALTIES
 225 East Main Street PATCHOGUE GR 5-2757

Sayville
CHARLES P. DICKERSON
 Real Estate — Insurance
 Homes — Waterfronts — Farms
 — Business Properties —
 31 Main Street SAYville 4-0164



JEANETTE SEIBERT was recently seen as Mammy Yokum in the musical hit "Li'l Abner." She has been featured in over 20 musical and dramatic productions including "Brigadoon," "Finian's Rainbow" and "Song of Norway." Gateway audiences first saw her as Mme. Dubannet in "The Boy Friend." Her extensive professional experience includes opera, solo work in churches, and concert appearances. A versatile comedienne, Jeanette Seibert scored a hit in "Romanoff and Juliet."



STUART GRAYMOUNT, popular television personality, is a veteran of 14 years of broadcasting. He was bit by the acting bug while in his Freshman year at Yale and later made his stage debut in "My Sister Eileen." His motion picture credits include "Viva Zapata" and recently "Please Don't Eat the Daisies." Mr. Graymont's varied career has included staff announcing for WQXR and WNEW and three years with Young and Rubicam's advertising agency as a producer-director.



CAROLYN BILDERBACK is a prominent modern dancer as well as a gifted actress and choreographer. She appeared this winter with the Katherine Litz Concert Group in New York City and has had extensive experience including "Carmen," "Prima Donna" and numerous musical comedies. Her most recent acting credit was in John Hale's production of "Waltz of the Toreadors" in N.Y. Miss Bilderback was on the teaching staff of the Aspen Music School in Colorado for three summers and was associated with Marian Rich in teaching Voice in N. Y.

FRANK ALBRIGHT is one of the most dedicated craftsmen in the American theatre. As Gateway's production manager and designer he plans, executes, and coordinates all the visual components of the Playhouse productions. An officer in the American Educational Theatre Association, Mr. Albright was active in the recent AETA Convention in Washington, D. C. Creatively active as an instructor and director in the West Haven, Connecticut, school system, he has had many years of experience in the professional theatre. His MFA degree was earned at the University of Oklahoma.

"THE COOLEST WAY TO GO TO THE BEACH"

DAVIS PARK FERRY CO.

MULFORD STREET
 PATCHOGUE

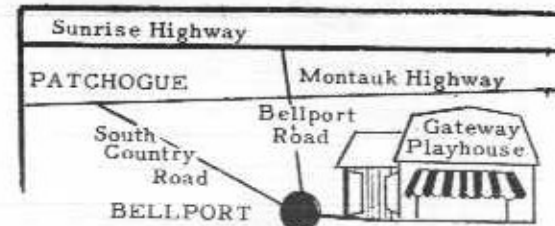
PHONE
 GR 5-1665

Frequent Trips to and from the Beach on Regular Schedule

RELAX IN COOL COMFORT



LOCATION



GEM OIL COMPANY INCORPORATED

OFF TO A CAREFREE* VACATION



*THANKS TO OUR PRE-VACATION SERVICE

470 WEST MAIN STREET
 GROVER 5-3220

GASOLINE — FUEL OIL
 MOTOR OIL — DIESEL OIL
 INDUSTRIAL OIL



PATCHOGUE
 BRENTWOOD 3-8111