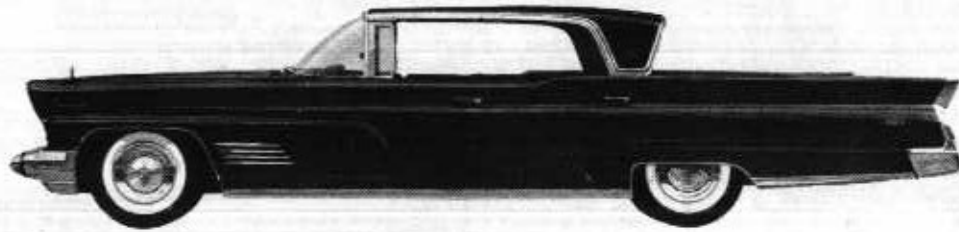


Lincoln Continental for 1960

A new peak of perfection for America's finest motorcar



1960 MERCURY



America's first popular price luxury car

Among the Family of Fine Cars

AMERICAN and IMPORTED

MAGNIFICENTLY DISPLAYED AT

**ZIEDLER
MOTORS,
INC.**

ROUTE 112 MEDFORD, N. Y.
GROVER 5-2900

RENAULT - COMET - PEUGEOT

LARK by STUDEBAKER

SALES and SERVICE

"Over an acre of prime used cars to choose from"

surveys at Campobello

Gateway Playhouse

BELLPORT, LONG ISLAND, NEW YORK



LONG ISLAND'S LEADING
SUMMER THEATRE

Professional Equity Companies

WHEN YOU BUY ELECTRICITY A NICKEL IS STILL A LOT OF MONEY

Today a nickel doesn't go quite as far as it did when we were youngsters — unless you are talking about electricity. While your total electric is probably higher, because most folks are using more electricity than ever before, the cost per kilowatt hour is 12% lower than it was 10 years ago. You can actually buy more electric service with that nickel than your parents ever did.



SERVED BY THE PATCHOGUE ELECTRIC LIGHT COMPANY SINCE 1886
SOUTHERN SUFFOLK POWER SYSTEM



"A WHOLE CITY BLOCK"
of Reconditioned Used Cars
at the Right Price



CHEVROLET **PETER J. GRADY**
Before you Buy, Give Grady a Try
118 MONTAUK highway W. SAYVILLE, N.Y. SAYVILLE 4-3100



HELEN VOLINO

SMART FASHIONS AT COMPETITIVE PRICES
Come in and try on our things - No Obligation

WEARING APPAREL and GIFTS
Main Street

Bellport 7-0780

Bellport, N. Y.

THE
BELLPORT
NATIONAL BANK
BELLPORT, NEW YORK



CONVENIENT PARKING — FRIENDLY SERVICE
WHERE YOUR DOLLARS MAKE SENSE



"OUR ADVERTISERS REPRESENT RELIABILITY — PATRONIZE THEM"

Gateway Playhouse



SOUTH COUNTRY ROAD
BELLPORT, L. I., N. Y.

BOX OFFICE BE 7-1133

"LONG ISLAND'S FOREMOST SUMMER THEATRE"

1960 marks a turning point in the history of Gateway Playhouse. While all other EQUITY summer theatres on Long Island have shut their doors, Gateway continues as an Equity operation with many new and exciting changes. The theatre auditorium has been completely re-decorated with new seating for good viewing. A brand new stage has been constructed to create an intimacy between the actors and the audience and yet retain all the magic and illusion of Broadway staging. A new refreshment terrace has been created which is open all day as well as during intermission. Cool fountain specialties and charcoal broiled hamburgers are featured.

In selecting the guest stars for our 1960 season, we have taken actors who are the best suited for the roles. We do not believe in casting famous personalities who do not know how to act. Gateway performers come to Bellport directly from their Broadway, screen, and television assignments.



We are proud of our pleasant association with the Guild Hall in East Hampton, Long Island. Gateway productions can be seen at the John Drew Theatre, America's most beautiful summer playhouse. For information concerning the East Hampton schedule, you can inquire at the box-office.

"EQUITY" is the stamp of professionalism in Show Business. Equity theatres necessarily follow the high standards set by this union. All Broadway shows are produced with Equity actors as at Gateway. The best actors in the profession are members of Equity. Gateway Theatre is the ONLY summer theatre on Long Island that maintains a resident company of EQUITY actors.

We are grateful to you, the audience, for your continued support and comments. You have proven to us that the living theatre will never die. It is our plan to bring to you each week the very best that Broadway has to offer.

If you are not on our mailing list, please sign the guest book in the lobby.

IN THE LOBBY
AT INTERMISSION
REFRESH WITH PEPSI



Be Sociable, Have a
Pepsi



**WANT MORE FOR YOUR MONEY
...KEEP YOUR EYE ON GRANTS**

SUMMER-IZE AND SAVE

**GRANTS LOW PRICES STRETCH VACATION
BUDGETS OVER ALL YOUR FAMILY & HOME NEEDS**

PATCHOGUE, L. I.

Use any one of Grants 3 "Charge-It" Plans. No money down.

EVERYTHING FOR YOUR DREAM HOUSE
FROM LONG ISLAND'S MOST COMPLETE
LUMBER YARD
FINANCING. PLANS, FREE ESTIMATES



For Same Day Delivery



Telephone GROVER 5-3232

"Have It Done By Druhm"

AL DRUHM & CO.

HEATING - AIR CONDITIONING - FUEL OIL

EMerson 3-6484

118 North Diviston Avenue

BLUE POINT

SWEZEY FUEL CO., INC.

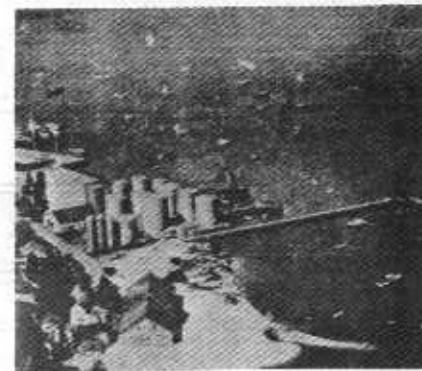
HEATING OIL and OIL BURNERS

Oil Burners — Heating Systems Installed and Serviced

RIDER AVENUE GROVER 5-0270 PATCHOGUE

BEACH STREET PORT JEFFERSON

POrt Jefferson 8-0555



THE PRODUCERS

HARRY C. POMERAN established the Gateway in 1941 after a successful career in the business world. Because of his careful business management he holds the distinction of being one of the few producers who have kept their summer theatres operating successfully for mor than ten years. Active in the fashion, entertainment, and hotel fields, he has built a wealth of good will for the Playhouse. Mr. Pomeran is a member of the Patchogue Rotary Club, the Chamber of Commerce, is a pastmaster of his Masonic Lodge, and was active in trade associations and the N. Y. Board of Arbitration.

DAVID SHELDON has been directing plays at Gateway since 1950 and is responsible for the artistic policy of the Playhouse. A former actor who began his career in summer stock at the age of 16, Mr. Sheldon made his off-Broadway directing debut with "The Skin of Our Teeth." He since has emerged as one of New York's most exciting young directors, his assignments having included "Dark of the Moon," "The Happiest Millionaire," and "The Diary of Anne Frank." After studying playwrighting with Robert Penn Warren at the Yale Drama School where he received an MFA degree, David Sheldon has spent a good portion of his winters writing for television. He has acted in New York, Texas, and England and his most recent TV credit was Hemingway's "Fifth Column" on CBS.

STAN ALLAN has joined Gateway Playhouse as coproducer in charge of publicity, public relations and the supervision of personnel. Prior to his affiliation with Gateway, he served as station manager of Radio Station WPAC, Patchogue, and became distinguished as one of Long Island's best known radio personalities. Previously he was director of programs at WCOJ, Philadelphia. Stan Allan was associated with the Mike Wallace Interviews, the Dave Garroway Show and WOR-TV (Channel 9) and has done free lance TV commercials. He is married to the popular stage and screen actress Ruth Vickers.



PLAYHOUSE STAFF

Business Manager	Harry C. Pomeran
Promotion and Personnel Manager	Stan Allan
Director	David Sheldon
Production Designer	Frank Albright
Stage Manager	James Martin
Choreographer	Carolyn Bilderback
Musical Director	Frank Seibert
Master Carpenter	Otto Kress
Acting Coach	E. J. Poggi
Workshop Director	Peter Marble
Student Advisor	Jeanette Seibert
Photography	TEC
Box-Office Treasurer	James Mee
Accountant (CPA)	Jacob Simon & Assoc.



FORD

RIVERHEAD, N. Y.
PARK 7-4440

LYON
SALES — SERVICE



CORAM, N. Y.
SELDEN 2-3553



IRVING BELLER, part of the successful team known as Sybelle Carpets, has just completed a wonderful move to a bigger show of fine quality floor covering at 464 East Main Street, in Patchogue. Irv has a well-rounded background in the floor covering business and always gives his best in every appearance. He is married and the father of four children. When looking for the best see Irv at Sybelle Carpet, directly opposite Safeway in Patchogue. ATLantic 9-1112.



JERRY BELLER is the other half of the Sybelle Carpet team of fine performers. He resides in Patchogue with his wife and three children. Jerry has had many years of floor covering experience, the reason so many people give rave notices on his excellent ability to offer good service and quality plus the best price. Also in the cast of Sybelle Carpet is Howard Houston, Al Kattau, Harold Overton, Howard Funk and Stan Beller of the Commack store. See them soon at Sybelle Carpet's new store, 464 East Main Street in Patchogue. ATLantic 9-1112.



WPAC -- 1580 KC WPAC -- 106.1 MC

COMING SOON
WAPC RIVERHEAD
1570 KC

Long Island's Leading Radio Stations
Powerful 10,000 Watts, Patchogue, N. Y.

THE ADULT STATION
"FOR THE YOUNG AT HEART"

"The Gateway to Summer" at the Bee Hive is a bandana-draped invitation to your Summer of Summers on Long Island. Visit our "Gateway" Booth, First Floor . . . open daily with discount privileges for

the BEE HIVE

summer theatres, restaurants . . . information on bathing beaches, historical spots . . . where to go and what to do this Summer.

of Patchogue

East Main Street, Patchogue, New York

GRover 5-9000

OUR ADVERTISERS REPRESENT RELIABILITY — PATRONIZE THEM

THE SHOWS

"If you missed them on Broadway, see them at Gateway."

The most exciting line up of plays ever assembled in one season. Each comes to the Gateway stage with a guest star and a company of Equity actors.

(Schedule subject to change. Consult any Sunday newspaper for up-to-date play listings.)

JULY 4 (MONDAY) thru JULY 10

Jeffrey Lynn repeats the role in which he starred on Broadway. An adult love story-- both moving and funny.



"A ROMANTIC DELIGHT!"
—ATKINSON, N. Y. Times

Jeffrey Lynn
and SHEILA COPELAN

Two for the Seesaw

"WILLIAMS STARS"

THE DARK
AT THE
TOP OF
THE STAIRS



A powerful drama full of warm humor starring BARBARA LESTER and TV's STUART GRAYMOUNT. By the author of FIGNIC, BUS STOP, & COME BACK LITTLE SHEBA. Set in the Mid-West. Playing JULY 12 thru JULY 17.



Fresh from Broadway
RITIOUS COMEDY HIT
GOLDEN FLEECING

A wild scheme to outwit the U.S. Navy and defraud a gambling joint... full of many laughs.....

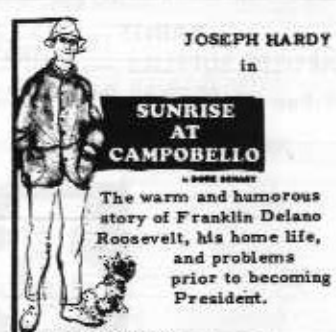
This TOM POSTON comedy-hit was cheered by the New York critics. This excursion into madness and hilarity is scheduled for JULY 19 thru JULY 24.

At Gateway JULY 26 thru JULY 31
Starring RONALD DAWSON



"DON'T MISS IT!"
Only from
"A Marvelous Play"
—ATKINSON, Times
LOOK
HOMEWARD,
ANGEL

PULITZER
PRIZE
N. Y. TIMES
CRITIC CHOICE
AWARD

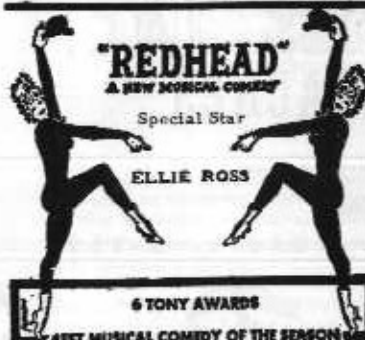


JOSEPH HARDY
in

SUNRISE
AT
CAMPOBELLO

The warm and humorous story of Franklin Delano Roosevelt, his home life, and problems prior to becoming President.

A highlight of the summer season
AUGUST 2 thru AUGUST 7



"REDHEAD"
A NEW MUSICAL COMEDY

Special Star

ELLIE ROSS

6 TONY AWARDS

BEST MUSICAL COMEDY OF THE SEASON
A romantic murder-mystery-musical called by Dorothy Kilgallen "bright, tasteful, tuneful, cheerful." Good fun. AUGUST 9 thru AUGUST 21.

AUGUST 23 thru AUGUST 28
Raw and shocking... full of passion and violence... a blockbuster. A powerful play by the top playwright.

TENNESSEE WILLIAMS'
"BIGGEST, MOST EXHILARATING JOEL OF THE SEASON SHAKES THE THEATRE"



Sweet
Bird
of Youth

No children admitted.



"ONE OF THE BEST MUSICALS OF THE CENTURY"

Salad Days



Direct from its run of six years in London, SALAD DAYS is the longest running musical in the World, surpassing MY FAIR LADY and OKLAHOMA. A madcap satire on Beatniks and the young generation. AUGUST 30 thru SEPTEMBER 11.

ABOUT OUR ADVERTISERS

The advertising subscribers whose products and services you see displayed throughout this program are deserving of your patronage. These progressive business men and women recognize the prestige and prime opportunity to present their messages to a select and distinguished audience of prospective clients.

They also demonstrate by their representation a genuine desire to promote culture in the community. The presence of a professional summer theatre in a society attests to its economic importance, its underlying residential growth potential and its emergence as a focal point of cultural development in the surrounding area. Living theater may indeed be proud of these community minded men and women of high caliber whose representation in the Playbill we gratefully acknowledge.



FORD

RIVERHEAD, N. Y.
PARK 7-4440

LYON
SALES — SERVICE



CORAM, N. Y.
SELDEN 2-3553



IRVING BELLER, part of the successful team known as Sybelle Carpets, has just completed a wonderful move to a bigger show of fine quality floor covering at 464 East Main Street, in Patchogue. Irv has a well-rounded background in the floor covering business and always gives his best in every appearance. He is married and the father of four children. When looking for the best see Irv at Sybelle Carpet, directly opposite Safeway in Patchogue. ATLantic 9-1112.



JERRY BELLER is the other half of the Sybelle Carpet team of fine performers. He resides in Patchogue with his wife and three children. Jerry has had many years of floor covering experience, the reason so many people give rave notices on his excellent ability to offer good service and quality plus the best price. Also in the cast of Sybelle Carpet is Howard Houston, Al Kattau, Harold Overton, Howard Funk and Stan Beller of the Commack store. See them soon at Sybelle Carpet's new store, 464 East Main Street in Patchogue. ATLantic 9-1112.



AM 1580 KC WPAC FM 106.1 MC

COMING SOON
WAPC RIVERHEAD
1570 KC

Long Island's Leading Radio Stations
Powerful 10,000 Watts, Patchogue, N. Y.

THE ADULT STATION
"FOR THE YOUNG AT HEART"

"The Gateway to Summer" at the Bee Hive is a bandana-draped invitation to your Summer of Summers on Long Island. Visit our "Gateway" Booth, First Floor . . . open daily with discount privileges for summer theatres, restaurants . . .

the BEE HIVE

information on bathing beaches, historical spots . . . where to go and what to do this Summer.

of Patchogue

East Main Street, Patchogue, New York

GRover 5-9000

"OUR ADVERTISERS REPRESENT RELIABILITY — PATRONIZE THEM"

THE SHOWS

"If you missed them on Broadway, see them at Gateway."

The most exciting line up of plays ever assembled in one season. Each comes to the Gateway stage with a guest star and a company of Equity actors.

(Schedule subject to change. Consult any Sunday newspaper for up-to-date play listings.)

JULY 4 (MONDAY) thru JULY 10

Jeffrey Lynn repeats the role in which he starred on Broadway. An adult love story-- both moving and funny.



"A ROMANTIC DELIGHT!"

Jeffrey Lynn
and SHEILA COPELAN

Two for the Seesaw

"WILLIAMS STARS"

THE DARK AT THE TOP OF THE STAIRS



A powerful drama full of warm humor starring BARBARA LESTER and TV's STUART GRAYMOUNT. By the author of PICNIC, BUS STOP, & COME BACK LITTLE SHEBA. Set in the Mid-West. Playing JULY 12 thru JULY 17.



GOLDEN FLEECING

A wild scheme to outwit the U.S. Navy and defraud a gambling joint... full of many laughs.....

This TOM POSTON comedy-hit was cheered by the New York critics. This excursion into madness and hilarity is scheduled for JULY 19 thru JULY 24.

At Gateway JULY 26 thru JULY 31
Starring RONALD DAWSON.



LOOK HOMEWARD, ANGEL

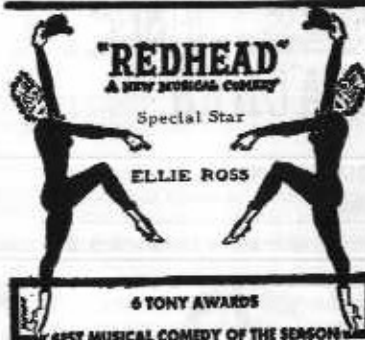
PULITZER PRIZE



SUNRISE AT CAMPOBELLO

The warm and humorous story of Franklin Delano Roosevelt, his home life, and problems prior to becoming President.

A highlight of the summer season
AUGUST 2 thru AUGUST 7



"REDHEAD"
A NEW MUSICAL COMEDY

Special Star

ELLIE ROSS

6 TONY AWARDS

A romantic murder-mystery-musical called by Dorothy Kilgallen "bright, tasteful, tuneful, cheerful." Good fun. AUGUST 9 thru AUGUST 21.

AUGUST 23 thru AUGUST 28
Raw and shocking... full of passion and violence.... a blockbuster. A powerful play by the top playwright.

TENNESSEE WILLIAMS'



Sweet Bird of Youth

No children admitted.



Salad Days

Direct from its run of six years in London, SALAD DAYS is the longest running musical in the World, surpassing MY FAIR LADY and OKLAHOMA. A madcap satire on Beatniks and the young generation. AUGUST 30 thru SEPTEMBER 11.

ABOUT OUR ADVERTISERS

The advertising subscribers whose products and services you see displayed throughout this program are deserving of your patronage. These progressive business men and women recognize the prestige and prime opportunity to present their messages to a select and distinguished audience of prospective clients.

They also demonstrate by their representation a genuine desire to promote culture in the community. The presence of a professional summer theatre in a society attests to its economic importance, its underlying residential growth potential and its emergence as a focal point of cultural development in the surrounding area. Living theater may indeed be proud of these community minded men and women of high caliber whose representation in the Playbill we gratefully acknowledge.



George C. Haegele

LICENSED ELECTRICAL CONTRACTOR

FOR YOUR HOME,
YOUR BUSINESS
OR INDUSTRY

PATCHOGUE-PORT JEFFERSON RD.
MEDFORD, NEW YORK

PHONE GROVER 5-4738

"Suffolk's Only Decorating Dept. Store"

CLEAR-VIEW & FIALA

Incorporated

PAINTS — WALLPAPERS

ARTISTS SUPPLIES — UNPAINTED FURNITURE

212 East Main Street

Next to Sears in Patchogue

GRover 5-3165



BOHACK
...Where Better Meals Begin



UTILITY LINES, INC.
CHARTER COACHES

FOR

THEATRE PARTIES — SPECIAL OCCASIONS

For The Best Way To Get There

CALL:— UTILITY LINES

GRover 5-2524

BELLPORT — AAA

HAWKINS GARAGE

Immediate Emergency Repairs

Towing — Courteous Service

Opposite Post Office
Irv. Terwilliger

BELLPORT 7-0185
Cliff Miller

GRover 5-4850

Patchogue Marine

OUTBOARD BOATS - MOTORS & ACCESSORIES

14 to 20 ft. PLYWOOD — FIBERGLAS
AND LAP STRAKE MODELS

89 Route 112
PATCHOGUE, L. I., N. Y.

1/2 Mile North of
SUNRISE HIGHWAY

Oak Park
NURSERIES, Inc.



LESLIE S. MAC ROBBIE, Pres. - E. PATCHOGUE, LONG ISLAND, N. Y.

STAUFFER PIANO CO.

Lester - Betsy Ross Spinets

Lowrey Organs — Pianorgans

208 MEDFORD AVENUE
PATCHOGUE, N. Y.

PHONE GROVER 5-2674

"SAY YOU SAW IT IN THE GATEWAY PLAYHOUSE PLAY-BILL"

I. SMITH & SONS, INC.

Wholesale Distributors of Plumbing and Heating Supplies



152 Medford Ave. Patchogue, N. Y.

Water Pumps - Oil Burners
GR 5-3710

ROLLIC, INC.

Manufacturers of Juvenile Playclothes

Visit Our Outlet Store in the Rollic Building for Guaranteed Savings

400 EAST MAIN STREET

PATCHOGUE, NEW YORK

THE COMPANY

(Resident Actors and Advanced Apprentices)

Joseph Walker, Audrey Perla, Vivian Kahan, Marco Figueroa, Douglas Armand, Sue Martin, Raymond Banacki, Franklin Jones, Deborah Amussen, Joyce Cohen, Herman Poppe, Steve Semmelmeier, Cynthia Lasky, Lillian Ashworth, Sheila Kupperman, Joel Novack, Mary Louise Scafidi, Edward Thomas, Inez Parker, Blair Brooks, Frances Butterfield, Jerry Nelson, Jack Nicholson, Pat Seibert, Zellie Auerbach.

PETER MARBLE serves in the dual role of actor and co-director at Gateway. He was responsible for initiating the Showcase Theatre in the Bellport Community Hall. Here plays are presented weekly by the students from Gateway's drama school. Performances are attended by the general public, invited guests, and talent scouts. Mr. Marble directed "Blue Denim" and "Madwoman of Chaillot" last season.

E. J. POGGI is Gateway's gifted acting coach and a director of the student workshop operated on the property next to Gateway Playhouse. His background includes a B.A. from the University of San Francisco, an M.A. from Harvard, and work toward a Ph.D. from Columbia University. Mr. Poggi teaches at the Herbert Berghof Acting Studio in New York City and is a director and instructor of dramatic arts at Cooper Union.

AUTHORIZED RADIO
& TELEVISION SERVICE

HONEST TV & RADIO REPAIRS

Phone: GRover 5-2993

— at the right price —

294 East Main St. Patchogue, N. Y.



Atlantic 1-8744

Financing

Hardware - Mason Material - Paints

Electrical Supplies

Mastic Beach Road

Mastic Beach



Emergency Phone

Bellport 7-0079

Bellport 7-0838

"Reliability Since 1900"

TIGHT ROOFS McRAE BROS

Roofing — Siding — Insulation — Aluminum Windows — Awnings

GR 5-4200 HA 7-2746 PA 7-2859 MO 9-1344
EAsT Hampton 4-0212 SOuthampton 1-0113

BRONCO CHARLIE'S

ORIGINAL LOG CABIN RESTAURANT

Specializing in Sauerbraten and Dumplings

OPEN EVERY DAY SPECIAL PORTIONS
11 A.M. TO 10 P.M. FOR CHILDREN

SAyville 4-1132

MONTAUK HIGHWAY OAKDALE, N. Y.



BIANCO MOTORS, INC.

AUTHORIZED SALES and SERVICE
DELIVERIES HOME AND ABROAD



4120 SUNRISE HIGHWAY
SAYVILLE, N. Y.

TELEPHONE SAYVILLE 4-0805

WARM AIR
Furnace, Oil Burner,
Controls, Ducts,
Fuel Tank
\$750

INSTALL HEATING SYSTEMS NOW
AVOID WINTER INCONVENIENCE
COMPLETE INSTALLATION BY

HOT WATER
Boiler, Burner, Con-
trols, Circulator,
Radiators, Fuel Tank
\$885

SED-LAK

PLUMBING and HEATING, INC.

PATCHOGUE, N. Y.

GRover 5-1667
27 MEDFORD ROAD

"OUR ADVERTISERS REPRESENT RELIABILITY — PATRONIZE THEM"

Week beginning - August 2nd, 1960

HARRY C. POMERAN, DAVID SHELDON & STAN ALLAN

present

Joseph Hardy in **SUNRISE AT CAMPOBELLO**

By DORE SCHARY

with

RONALD DAWSON

BARBARA LESTER

TED CHAPMAN

Designer
FRANK ALBRIGHT

Stage Manager
JIM LESTER

Directed by
DAVID SHELDON

CAST

in order of appearance

ANNA ROOSEVELT	JEAN McCLINTOCK
ELEANOR ROOSEVELT	BARBARA LESTER
FRANKLIN D. ROOSEVELT, Jr.	JOEL NOVACK
JAMES ROOSEVELT	RAYMOND BANACKI
ELLIOTT ROOSEVELT	KINROSS CHAPMAN
MARIE	JOYCE LEE
FRANKLIN DELANO ROOSEVELT	JOSEPH HARDY
JOHN ROOSEVELT	DONALD SEIBERT
LOUIS McHENRY HOWE	RONALD DAWSON
MRS. SARA DELANO ROOSEVELT	THELMA DAVIDSON
MISS MARGUERITE (MISSY) LeHAND	JEANETTE SEIBERT
DOCTOR BENNET	TED CHAPMAN
MR. BRIMMER	HERMAN POPPE
MR. LASSITER	TED CHAPMAN
GOVERNOR ALFRED E. SMITH	HAL GODETT

"OUR ADVERTISERS REPRESENT RELIABILITY — PATRONIZE THEM"

THE PEOPLES NATIONAL BANK OF PATCHOGUE

CORDIALLY INVITES
YOUR ACCOUNT



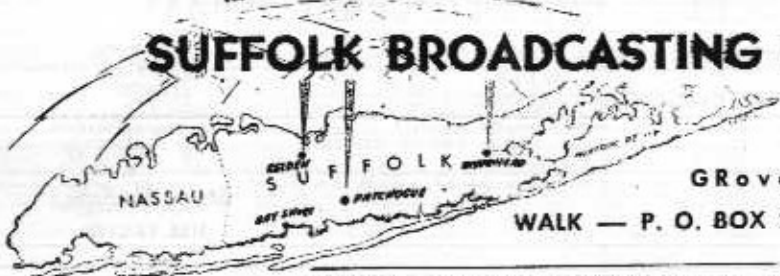
115 EAST MAIN STREET
PATCHOGUE, N. Y.

DRIVE-IN DEPOSIT WINDOW — EASY PARKING
MID-ISLAND OFFICE — Route 25, SELDEN, N. Y.

Member Federal Deposit Insurance Corp

WALK fm 97.5 mc 15,000 w.
WALK 1370 kc 500 w.
WRIV 1390 kc 1000 w.

SUFFOLK BROADCASTING CORPORATION



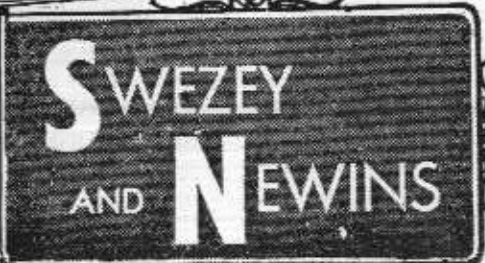
GRover 5-5200

WALK — P. O. BOX 230 — Patchogue, L. I., N. Y.

WALK - 1370 kc. • WALK-FM - 97.5 mc. • WRIV - 1390 kc.



YOUR DEPARTMENT STORE IN PATCHOGUE



GRover
5-0280

SERVING SUFFOLK
SINCE 1894



536 EAST MAIN STREET
PATCHOGUE, N.Y.

Open Weekdays 7:30 A.M. to 5 P.M.—Fri. to 8 P.M.

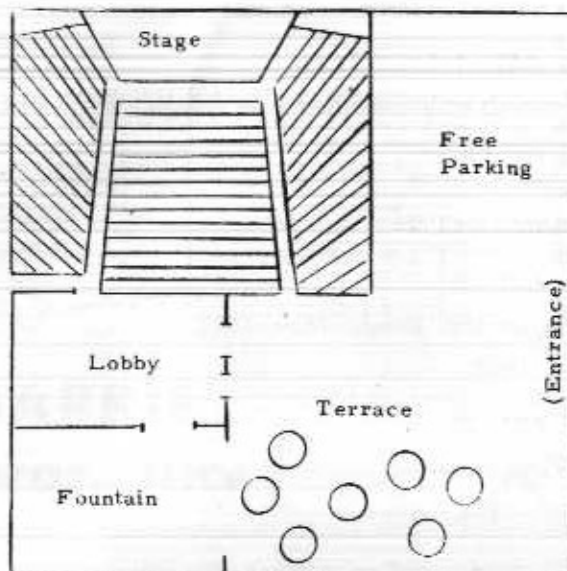
DIRECT SOURCE FOR
LABOR & MATERIALS
TO HOMEOWNERS

Headquarters of Operation
"HOME IMPROVEMENT"
Finances Arranged: Construction, Garages,
Basements, Improvements

GRover 5-1830

"OUR ADVERTISERS REPRESENT RELIABILITY — PATRONIZE THEM"

PLAYHOUSE SEATING PLAN



TICKET INFORMATION

Individual seats: \$1.85 \$2.50 \$3.30
Saturday Nights: 2.50 3.30 3.85
Saturday Bargain Matinee (children 1/2 price)

CURTAIN 8:30 Sat. Matinee 2:15

BUY A BOOK OF 10 \$2.50 tickets for only
\$20.00 — SAVE \$5.00

20% DISCOUNT FOR THEATRE PARTIES

Information at the Box Office or
phone BELLport 7-1133



FIRE NOTICE:—The exit indicated by a red
light and sign nearest to your seat is the short-
est way to the outside. If you must use this
door, please DO NOT RUN — WALK TO THAT
EXIT.

Rose Jewelers

KNOWS
SOME SECRETS

about *Diamonds*



but we'll gladly
share them
with you

ROSE JEWELERS
and
THE AMERICAN GEM SOCIETY

The American Gem Society is a selected
group of 650 jewelers in the U. S. and
Canada, dedicated to the development of
trust and confidence in the retail jeweler
by the general public and the advancement
of scientific education within the jewelry
industry so as to eliminate any misrepre-
sentation caused by ignorance of the true
nature and value of merchandise offered
for sale.

Among the standards for the society, a
member:

- Must enjoy a reputation for unquestioned integrity in its own community
- Must take and pass annual exams on the latest developments in gemology.

Rose Jewelers who are registered
jewelers, American Gem Society,
stand ready to serve you with
professional advice on diamonds
and fine jewelry.

Rose Jewelers



REGISTERED JEWELERS
AMERICAN GEM SOCIETY

74 EAST MAIN STREET
PATCHOGUE

"OUR ADVERTISERS REPRESENT RELIABILITY — PATRONIZE THEM"

HOUSE "PLAY-BILL"
SYNOPSIS OF SCENES

ACT I

- Scene 1 Franklin Delano Roosevelt's summer home at Campobello, New Brunswick, Canada. August 10th, 1921.
- Scene 2 The Same, September 1, 1921
- Scene 3 The Same, September 13, 1921

ACT II

- Scene 1 The New York House on 65th Street. May, 1922.
- Scene 2 The Same, January, 1923.

ACT III

- Scene 1 New York, May, 1924.
- Scene 2 The Same, June 26, 1924.

: — :

Production Staff for "Sunrise at Campobello"

- Asst. to the Director Jane Griffin
- Sound Edward Thomas
- Lights Jack Nicholson
- Properties Sheila Kay and Cynthia Lasky
- Costumes Blair Brooks and Mary Louise Scafidi
- Furniture D. Watterson, F. Jones and M. Figueroa

Intermission Refreshment:
 CHARCOAL BROILED HAMBURGERS
 ICE CREAM CONES — ICE CREAM POPS
 ORANGE and LIME DRINKS
 PEPSI COLA — COFFEE

ARE YOU ON OUR MAILING LIST?

ZEIDLER MOTORS, Inc.

Among the Family of Fine Cars
 Lincoln Continental — Mercury — Renault — Comet — Peugeot — Lark by Studebaker
 Route 112 G R o v e r 5 - 2 9 0 0 MEDFORD, N. Y.

"OUR ADVERTISERS REPRESENT RELIABILITY — PATRONIZE THEM"

"Suffolk County's Kitchen Center"



- A COMPLETE SERVICE**
- Kitchen Cabinets
 - Exhaust Fans
 - Formica Tops
 - Hoods
 - Vanities
 - Installation

(4 Miles East of Patchogue)
 MONTAUK HIGHWAY

AT 6-9270
AT 9-1145

Free Estimates
 Plumbing Arranged
 NO JOB TOO SMALL
 VISIT OUR Showroom & Factory

BELLPART, N.Y.

BARRIE Bros., Inc.

"THE STANDARD OF THE WORLD"



CADILLAC — OLDSMOBILE

EAST MAIN STREET

PATCHOGUE, N. Y.

Maletta's INC.

TV — Sales & Service

TV - APPLIANCES - HI FI
 210 Medford Avenue
 PATCHOGUE, L. I.

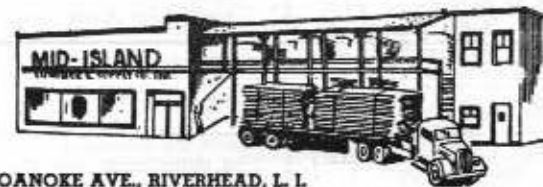
Magnavox — Hi Fi & Stereophonic Sound
 Hot Point — Kelvinator
 Frigidaire — RCA Whirlpool

GE — Color TV
 G R o v e r 5 - 8 3 0 0

PUBLIC ADDRESS & STEREOPHONIC SOUND SYSTEMS
 AT GATEWAY INSTALLED BY MALETTA

Mid-Island Lumber & Supply Co., Inc.

Lumber and Mason Material
 Free Delivery Anywhere in Suffolk County



Patchogue-
 G R o v e r 5 - 0 9 1 4

415 ROANOKE AVE., RIVERHEAD, L. I.

Riverhead-
 Park 7-2430

"OUR ADVERTISERS REPRESENT RELIABILITY — PATRONIZE THEM"

Air Conditioned Free 21" TV

Patchogue Motel

RESTAURANT & COCKTAIL LOUNGE

Show Place of Long Island

EMERSON 3 (6880 9580

SUNRISE HIGHWAY

GR 5-2071

BEN'S GLASS SERVICE

All Types of Safety Glass

Curved or Tinted

We Specialize in Auto Glass

138 Medford Avenue Patchogue

PATCHOGUE FORD

FALCON — FORD — THUNDERBIRD — FORD TRUCKS



501 Medford Avenue GR 5-1133

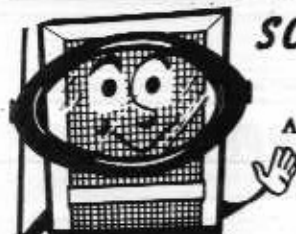
ARCH PRESERVER SHOES

PATCHOGUE NEW YORK

Lentin's

DRESSES - GOWNS - SPORTSWEAR
COATS - SUITS

45 E. Main St. PATCHOGUE 54 E. Main St. RIVERHEAD



SCONZO & SONS

Aluminum Storm Windows

SHOWROOM
457 E. MAIN STREET
PATCHOGUE, L. I.

GRover 5-0020

YOU FURNISH THE GIRL!
LET US FURNISH THE RING!
KALLER'S JEWELERS
DIAMOND SPECIALISTS SINCE 1899

30 East Main Street GRover 5-2002 Patchogue



JEFFREY LYNN has long been regarded by playgoers, movie fans, and television viewers as one of our most refreshing personalities. A comparative captive of the Hollywood sound stages, with regular excursions into the living theatre, Mr. Lynn has had his full share of success on the Broadway rostrum including, "The Long Days" and "Lo and Behold." After a major triumph as Jerry in "Two for the Seesaw" on Broadway, he flew to Hollywood to film "Butterfield 8" with Elizabeth Taylor (soon to be released). Gateway is proud to have him repeat his Broadway starring-role in "Two for the Seesaw."



ELLIE ROSS has emerged as an international musical-comedy personality in only a few years, captivating audiences in "My Fair Lady," "Showboat," "Can-Can," "Pajama Game" and many others. Her one woman musical revues have toured all over the United States, Canada, South America, and Nassau including the most prominent clubs and hotels. Her many New York TV appearances have included The Play of the Week, US Steel, Studio One. Ellie Ross appears as Essie in REDHEAD after scoring a success as Sharon in FINIAN'S RAINBOW. She is equally competent as a dramatic actress.



JOSEPH HARDY has achieved prominence on Broadway in such productions as "Detective Story," "Mr. Roberts," "The Male Animal," and the most recent "Cut of the Axe." Having been a standby for Ralph Belamy, who has just completed filming "Sunrise at Campobello," Mr. Hardy is perhaps the most ideal candidate for the role of Franklin Delano Roosevelt. Television audiences have seen him on "The Secret Story," "Edge of Night," and "New York Confidential." He recently completed the filming of a new TV series called "The Playboy" with Steve Cochran.

JIM MARTIN is at the center of all Gateway Playhouse productions because as Stage Manager he functions as a liaison between all members of the production staff. Lighting, sound, props, rehearsal schedules, construction, assistant directing, and a hundred other elements of production are managed by him. Mr. Martin has worked in theatres across the country including the Playhouse Theatre in Houston, Texas, and the Allenberry Playhouse in Pennsylvania. He is a skilled actor and has directed such productions as "LeMoientendu" by Camus, and "Bus Stop."

Mac Kanner

Quality Merchandise Since 1925
HART SCHAFFNER & MARX CLOTHING
BOTANY "500" CLOTHING
STETSON HATS - HATHAWAY SHIRTS

...Visit Our...
New University Shop

East Main Street Patchogue, N. Y.



"A Nice Place To Do Business"

HOLZ MOTORS

LATE MODEL USED CARS

E. Main St. at Evergreen Avenue
Patchogue, N. Y. GRover 5-4477
Where Good Cars Get Together

WESTIN'S BOAT SHOP

Thistle Highlander Jet-14
Wheeler Sailboats Cruisers Sea Skiffs
Complete Facilities for Sail and Power
River Road SAYville 4-1526

QUARTERE'S GARDEN CENTER

Garden Supplies — Nursery Items
Specializing in Landscaping and Lawns
WE GIVE BLUE STAMPS
Montauk Hwy. Bellport, L. I. AT 6-9233

Quality Clothes Deserve Colony Cleaning

Colony Cleaners & Dyers

STORAGE VAULT ON PREMISES

GRover 5-4060

98 S. OCEAN AVE. PATCHOGUE, N. Y. 295 MEDFORD AVE. PATCHOGUE, N. Y.

GRover 5-1650

MEDFORD FARM STAND

FRESH PRODUCE DAILY
— CUT FLOWERS —

Nursery and Garden Supplies

Route 112, Private Road
MEDFORD STATION, L. I.

Jr. Deb Inc.

CLOTHES FOR PRE-TEENS — TEENS — YOUNG JUNIORS

18 E. MAIN STREET
PATCHOGUE, N. Y. GR 5-2212

Cardinal CARPET SHOP

LINOLEUM—FLOOR AND WALL TILE

JOHN F. DERBY OFFERS HONEST VALUE

89 EAST MAIN STREET GR 5-1333 PATCHOGUE

George's

RADIO & TELEVISION SHOP

SALES AND SERVICE
RECORDS - PHOTO - HI FI - STEREO
ANTENNA INSTALLATIONS

SOUND SYSTEMS
66 MAIN ST. SAYVILLE, N. Y. 66 N. OCEAN AVE. PATCHOGUE, N. Y.

FOR T. V. SERVICE
SAYville 4-3370
GRover 5-0834

GRover 5-2531

STANLEY'S

Bedding and Furniture Co.
Patchogue's Leading Furniture Store

44 East Main St. Patchogue

Patchogue Power Tool Co.

Rentals - Sales - Repairs
Floor Sanders - Power Mowers
All Power Tools



298 MEDFORD AVE. PATCHOGUE, N. Y.



BELLPORT COUNTRY CLUB RESTAURANT

Modern New Decor Howard T. Rose, Manager Bar and Cocktails
 All cordially Welcome — Delicious A La Carte

LUNCHEON DINNER AFTER THEATRE
 11 - 3 P. M. 5 - 10 P. M. Fri., Sat., Sun. til 12 P. M.

At the Beautifully Landscaped Village Golf Course.

South Country Road ATLantic 6-9862 Bellport, N. Y.

CIRO'S

Italian Food at its Best
STEAKS — CHOPS — SEAFOOD
 Complete Dinners Served Till 1 A. M. Fri. & Sat. Nights

Sunrise Highway Islip Terrace
 2 BLKS. EAST OF RTE. 111 JUNIPER 1-3100

BELLPORT TAXI WILL TAKE YOU THERE ANYWHERE — ANYTIME

Telephone BELLport 7-0239
 R. R. Station Bellport

"A Good Place to Eat —
 Where Old Friends Meet"



On Montauk Highway E. Patchogue

THE LINDENMERE

HOTEL and RESTAURANT
 Summer Resort on the Water
 Featuring Deluxe Swimming Pool
 2½ ROOM UNITS FOR SUMMER OR WINTER RENTAL
 Center Moriches AT 4-0553

AT 4-0803

COLONIAL ARMS RESTAURANT

Where Dining Is a Pleasure
 Not an Extravagance
 Steak — Chops — Lobster — Sea Food
 Montauk Highway Center Moriches

GROver 5-9769 11 A. M. to Midnight

樓 珍 寶 PATCHOGUE ROYAL RESTAURANT

Real Cantonese Luncheons
 & Family Dinners
 Wines and Liquors — Air Conditioned
 68 West Main St. Patchogue

RO 9-8986

LAKE VIEW INN

One of L. I.'s Picturesque Restaurants
 Dancing Saturday to Jimmy Jines Band
 Paul at the Organ—Fri - Sat - Sun
 Private Beach Boating Bowling

Lake Shore Road Lake Ronkonkoma

NELSON'S RESTAURANT

Breakfast - Lunch - Dinner
 open daily
 7 a.m.-11 p.m. - Fri. & Sat. til 12 p.m.
 Full Course Meals at Pleasing Prices
 Turkey — Scallops — Roast Beef

3-5 East Main Street Patchogue

"SAY YOU SAW IT IN THE GATEWAY PLAYHOUSE PLAY-BILL"

For Gracious Dining

*The
 Better Ole*

DANCING SATURDAY NIGHTS Comfortably Air Conditioned

— Delightful Dining — Continental Cuisine —

Exquisite Newly Remodeled Dining Room

Open After Theatre — Closed Tuesdays

Recommended by Cue—Gourmet—Esquire—Diner's Club

South Country Road Bellport 7-0568 Brookhaven, N. Y.

Canoe Place Inn

ONE OF LONG ISLAND'S FINEST RESTAURANTS
 Luncheon — Cocktails — Dinner FOR RESERVATIONS
 Entertainment Nightly Phone HAMpton Bays 2-0150

ROOM ACCOMMODATIONS — BUNGALOWS — EFFICIENCY APARTMENTS

BANQUET FACILITIES FOR 1000
 MONTAUK HIGHWAY — HAMPTON BAYS

Cool, Delightful Dining
 on the Shores of the Connetquot River

Snapper INN

Shore Drive Oakdale
 Sayville 4-0248

RIDGELY'S

FABULOUS STEAKS

WATER MILL, L.I.

MUSIC, DANCING NITELY

LAND'S END MARINA MOTEL

Come by Land or Sea
 Dockage — Pool — Fishing Station
 Cool Restful Efficiencies
 Day, Week, Month, Season
 70 Browns River Road SA 4-2040
 NEXT TO LAND'S END RESTAURANT

LAND'S END

One of Long Island's Finest
 RESTAURANT
 Member Diner's Club and American Express
 "on the bay"
 SAYVILLE, N. Y.
 Reservations SAYville 4-1888

Deli - King

Luncheon & Dinners
*The Best Hot Corned Beef
 and Hot Pastrami Sandwich
 in Suffolk County*

85 W MAIN STREET
 PATCHOGUE, N. Y.

GROver 5-9744

Donato's RESTAURANT

ITALIAN AND AMERICAN CUISINE
 PIZZA PIES OUR SPECIALTY
 SOUTH COUNTRY ROAD
 EAST PATCHOGUE, L. I. N. Y.

ORDERS TO TAKE OUT PHONE GROVER 5-3366



JOHN J. ROE & SON

INSURANCE — REAL ESTATE
Since 1898

Main Office
125 East Main St.
PATCHOGUE, N. Y.
GRover 5-4000

Branch Office
118 Main Street
BELLPORT, N. Y.
Bellport 7-0700



GRover 5-3910-3911

CASSEL G.M.C. TRUCK SALES

AUTHORIZED DEALER
SALES - SERVICE - PARTS

WILLIAM D. CASSEL
2 ACCESS ROAD
COR. N. OCEAN AVENUE
PATCHOGUE, L.I., N.Y.

PATCHOGUE PLATE GLASS CO.

Auto Glass Installed While You Wait

CURVED WINDSHIELDS

Clear and Tinted Glass for Every Make of Car
Glass for Your Car Is Always in Stock—Immediate Service

GRover 5-1790

64-66 West Main Street Patchogue



ANVIL - BELL FENCES

For Safety — For Lifetime Use
We Furnish, Deliver and Install

GRover 5-1917

Waverly Ave. Patchogue

CARL and BOB'S OUTDOOR STORES "Leisure Wear of Distinction" MEN — BOYS

Main Street

Patchogue

Riverhead

GRover 5-0445

South Shore Convalescent Home

KATHERINE McPEAK, R.N. 286 NORTH OCEAN AVENUE
JAMES McPEAK, R.N. PATCHOGUE, NEW YORK



BARBARA LESTER was chosen by Gateway Playhouse because of her outstanding portrayal of Olive in Alan Schneider's production of "Summer of the 17th Doll" in New York this winter. Her Broadway credits include "Legend of Lizzie" and "Protective Custody." Barbara Lester toured in the National Company of "Separate Tables" and has appeared with many prominent stock companies such as the Ann Arbor Drama Festival, the Arena Stage in Washington, D. C., and the Woodstock Playhouse. Acting in many types of roles from Jennet in "Lady's Not for Burning" to Patty in "The Moon Is Blue." Miss Lester is one of the most versatile actresses on the American stage.



RONALD DAWSON is certainly a name familiar to Broadway theatergoers. His Broadway stage credits include "Witness for the Prosecution" and "The Sleeping Prince" and his many screen appearances have ranged from "Mutiny on the Bounty" to the recent "Odds Against Tomorrow." Mr. Dawson has been seen in over 500 major television shows including US Steel, Armstrong Circle Theatre, and the Goodyear Playhouse. Born in Johannesburg, South Africa, Ronald Dawson was trained in the British Empire. His stage success also include "Middle of the Night" and "Silk Stockings."



SHEILA COPELAN, acclaimed as one of the most exciting young actresses in the profession, has studied acting with Lee Strasberg (Actors Studio). She has appeared in "Member of the Wedding" and "Charley's Aunt" and her television credits include "You Are There," "Frontiers of Faith" and "Mr. Peepers." Children will remember her as "Penny" from Storyland on the "Funny Bunny Show." Gateway Playhouse is fortunate to have Sheila Copelan direct from her successful run of "Two for the Seesaw."

FRANK SEIBERT is an accomplished musician as well as a successful musical director, having played with a number of bands and orchestras in New York. He has appeared in many hotels, night clubs, and on television ("Masquerade Party"). Theatre audiences know Frank Seibert mainly for his musical direction of "Bells Are Ringing," and "Say Darling." He recently directed "Showboat" for Theatre 5 in Huntington and is Director of Music for Central School District No. 5. At Gateway he is staff musical director and vocal coach.

DIVIDENDS FROM DAY OF DEPOSIT . . . COMPOUNDED QUARTERLY



The UNION SAVINGS BANK

OF PATCHOGUE, N. Y.

Corner So. Ocean Ave. and Church St. Tel. GR 5-5800

Banking Services 9 A.M. to 6 P.M. Daily Except Sat., Fri. Eve. 6:30 to 8 P.M. Member FDIC

RE-UPHOLSTERY
by NORMAN KING & SON

BEFORE

AFTER

CUSTOM SLIP COVERS
Covers fit and fit to the color, texture, durability, finish, etc. of your original upholstery.

FINEST QUALITY REUPHOLSTERY
CUSTOM REBUILT BY EXPERT CRAFTSMEN - FINEST FABRICS AT MODERATE COSTS. FOAM RUBBER INSURANCE ESTIMATES.

FREE ESTIMATES
CONVENIENT TERMS

NORMAN KING & SON
MEDFORD AVE. (RT. 112) PATCHOGUE • (1/4 MI. N. of SUNSHINE HWY.)
GRover 5-1042 SERVING SUFFOLK COUNTY FOR 47 YEARS

OPEN MON. THURS. FRI. 10 to 5 P.M.
FREE PARKING



Adjacent to Mid-Island Upholstery
PATCHOGUE

MARINE INC.

DESIGNERS & MANUFACTURERS

BOAT CUSHIONS - WINTER COVERS
NAVY TOPS - PILOT SEATS
CABANA - SWIMMING POOL COVERS

GRover 5-2863
348 E. MAIN ST.

"IF IT'S FROM



Patchogue — Riverhead
YOU KNOW IT'S GUARANTEED"

Suffolk's Only Men's Formal Wear Specialty Shop

R. S. V. P.

Rental — Sales

Sunrise Highway Islip, N. Y.
JUniper 1-4500



Call Atlantic 6-9893
MONTAUK HWY., BELLPORT

LIFETIME GUARANTEED
MUFFLERS

Branches:
Brooklyn
Bronx
Jamaica
Yonkers



399 Medford Ave. - Patchogue, N. Y. - GR 5-1779



Bob Ritchie's Boat Yard Marine Supplies - Storage

Scott Outboard Motors

CRUISERS, CUSTOM
BOATS, TRAILERS, SKIFFS

168 WEST AVENUE
PATCHOGUE, N. Y.

Tel. GR 5-1609



MAZZOTTI and RUSSO, INC.

Licensed

Plumbing - Heating and
Air Conditioning

Deep and Shallow Well Pumps

GR 5-4245

30-32 Railroad Ave., Patchogue

DENNIS MAUD TREE EXPERT CO.

COMPLETE TREE SERVICE

Diagnosis Without Charge

Pruning — Fertilizing — Tree Removal — Spraying

Tree Surgery — Tree Moving — Poison Ivy Control

615 East Main Street

GRover 5-1233 — 2880

Patchogue, L. I.

Richard York Daniel Green
OF PATCHOGUE

Dr. Posner Red Cross Shoes
Roblee Florsheim Shoes Cobbies

14-22 SOUTH OCEAN AVENUE
PATCHOGUE, L. I., NEW YORK



EXPERT
DRY
CLEANING

Head of Neck Road
Bellport, N. Y.

Phone
Bellport 7-0347

MORLEY'S FLOWERS

Flowers for All Occasions

Member Florist Telegraph Del. Ser.

Tel. GRover 5-1980 Patchogue

BUY WITH
CONFIDENCE



USE A
NAME BRAND

THE SHERWIN-WILLIAMS CO.

PAINTS, VARNISHES, LACQUERS, LEADS, OILS, ENAMELS,
BRUSHES AND PAINTERS' SPECIALTIES

225 East Main Street PATCHOGUE GR 5-2757

Sayville

CHARLES P. DICKERSON

Real Estate — Insurance
Homes — Waterfronts — Farms
— Business Properties —

31 Main Street

SAyville 4-0164



JEANETTE SEIBERT was recently seen as Mammy Yokum in the musical hit "Li'l Abner." She has been featured in over 20 musical and dramatic productions including "Brigadoon," "Finian's Rainbow" and "Song of Norway." Gateway audiences first saw her as Mme. Dubonnet in "The Boy Friend." Her extensive professional experience includes opera, solo work in churches, and concert appearances. A versatile comedienne, Jeanette Seibert scored a hit in "Romanoff and Juliet."



STUART GRAYMOUNT, popular television personality, is a veteran of 14 years of broadcasting. He was bit by the acting bug while in his Freshman year at Yale and later made his stage debut in "My Sister Eileen." His motion picture credits include "Viva Zapata" and recently "Please Don't Eat the Daisies." Mr. Graymount's varied career has included staff announcing for WQXR and WNEW and three years with Young and Rubicam's advertising agency as a producer-director.



CAROLYN BILDERBACK is a prominent modern dancer as well as a gifted actress and choreographer. She appeared this winter with the Katherine Litz Concert Group in New York City and has had extensive experience including "Carmen," "Prima Donna" and numerous musical comedies. Her most recent acting credit was in John Hale's production of "Waltz of the Toreadors" in N.Y. Miss Bilderback was on the teaching staff of the Aspen Music School in Colorado for three summers and was associated with Marian Rich in teaching Voice in N. Y.

FRANK ALBRIGHT is one of the most dedicated craftsmen in the American theatre. As Gateway's production manager and designer he plans, executes, and coordinates all the visual components of the Playhouse productions. An officer in the American Educational Theatre Association, Mr. Albright was active in the recent AETA Convention in Washington, D. C. Creatively active as an instructor and director in the West Haven, Connecticut, school system, he has had many years of experience in the professional theatre. His MFA degree was earned at the University of Oklahoma.

"THE COOLEST WAY TO GO TO THE BEACH"

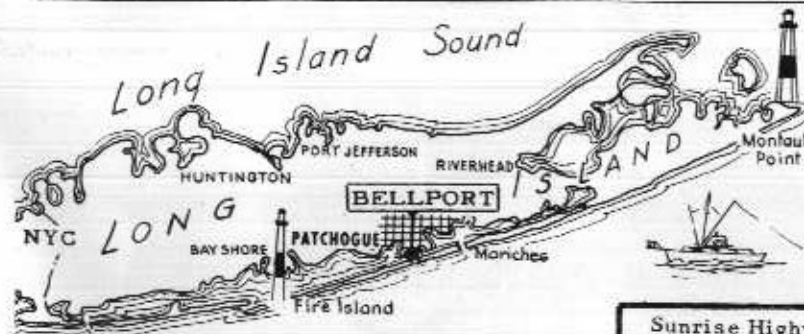
DAVIS PARK FERRY CO.

MULFORD STREET
PATCHOGUE

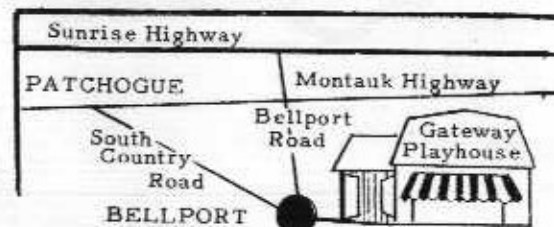
PHONE
GR 5-1665

Frequent Trips to and from the Beach on Regular Schedule

RELAX IN COOL COMFORT



LOCATION



GEM OIL COMPANY INCORPORATED

OFF TO A CAREFREE* VACATION



*THANKS TO OUR PRE-VACATION SERVICE

470 WEST MAIN STREET
GROVER 5-3220

GASOLINE — FUEL OIL
MOTOR OIL — DIESEL OIL
INDUSTRIAL OIL



PATCHOGUE
BRENTWOOD 3-8111