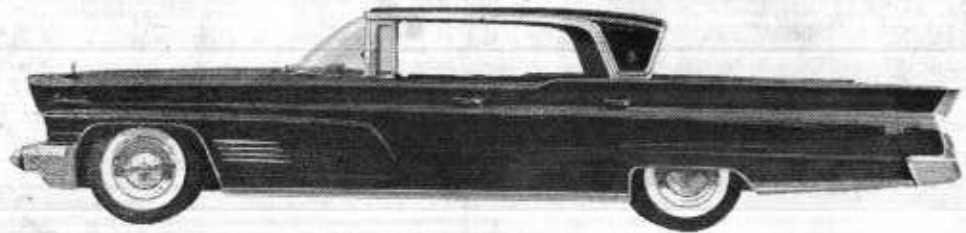




Lincoln Continental for 1960

A new peak of perfection for America's finest motorcar



1960 MERCURY

America's first popular price luxury car

Among the Family of Fine Cars

AMERICAN and IMPORTED

MAGNIFICENTLY DISPLAYED AT

**ZIEDLER
MOTORS,
INC.**

ROUTE 112 MEDFORD, N. Y.

GRover 5-2900

RENAULT - COMET - PEUGEOT

LARK by STUDEBAKER

SALES and SERVICE

"Over an acre of prime used cars to choose from"

Gateway Playhouse

BELLPORT, LONG ISLAND, NEW YORK



LONG ISLAND'S LEADING
SUMMER THEATRE

Professional Equity Companies

WHEN YOU BUY ELECTRICITY A NICKEL IS STILL A LOT OF MONEY

Today a nickel doesn't go quite as far as it did when we were youngsters — unless you are talking about electricity. While your total electric is probably higher, because most folks are using more electricity than ever before, the cost per kilowatt hour is 12% lower than it was 10 years ago. You can actually buy more electric service with that nickel than your parents ever did.



SERVED BY THE PATCHOGUE ELECTRIC LIGHT COMPANY SINCE 1886
SOUTHERN SUFFOLK POWER SYSTEM



"A WHOLE CITY BLOCK"
of Reconditioned Used Cars
at the Right Price



CHEVROLET **PETER J. GRADY** **Buick**
Before you Buy, Give Grady a Try
118 MONTAUK highway W. SAYVILLE, N.Y. SAYVILLE 4-3100



HELEN VOLINO

SMART FASHIONS AT COMPETITIVE PRICES
Come in and try on our things - No Obligation

WEARING APPAREL and GIFTS
Main Street

Bellport 7-0780

Bellport, N. Y.

THE
BELLPORT
NATIONAL BANK
BELLPORT, NEW YORK



CONVENIENT PARKING — FRIENDLY SERVICE
WHERE YOUR DOLLARS MAKE SENSE



"OUR ADVERTISERS REPRESENT RELIABILITY — PATRONIZE THEM"

Gateway Playhouse



SOUTH COUNTRY ROAD
BELLPORT, L. I., N. Y.

BOX OFFICE BE 7-1133

"LONG ISLAND'S FOREMOST SUMMER THEATRE"

1960 marks a turning point in the history of Gateway Playhouse. While all other EQUITY summer theatres on Long Island have shut their doors, Gateway continues as an Equity operation with many new and exciting changes. The theatre auditorium has been completely re-decorated with new seating for good viewing. A brand new stage has been constructed to create an intimacy between the actors and the audience and yet retain all the magic and illusion of Broadway staging. A new refreshment terrace has been created which is open all day as well as during intermission. Cool fountain specialties and charcoal broiled hamburgers are featured.

In selecting the guest stars for our 1960 season, we have taken actors who are the best suited for the roles. We do not believe in casting famous personalities who do not know how to act. Gateway performers come to Bellport directly from their Broadway, screen, and television assignments.



We are proud of our pleasant association with the Guild Hall in East Hampton, Long Island. Gateway productions can be seen at the John Drew Theatre, America's most beautiful summer playhouse. For information concerning the East Hampton schedule, you can inquire at the box-office.

"EQUITY" is the stamp of professionalism in Show Business. Equity theatres necessarily follow the high standards set by this union. All Broadway shows are produced with Equity actors as at Gateway. The best actors in the profession are members of Equity. Gateway Theatre is the ONLY summer theatre on Long Island that maintains a resident company of EQUITY actors.

We are grateful to you, the audience, for your continued support and comments. You have proven to us that the living theatre will never die. It is our plan to bring to you each week the very best that Broadway has to offer.

If you are not on our mailing list, please sign the guest book in the lobby.

IN THE LOBBY
AT INTERMISSION
REFRESH WITH PEPSI



Be Sociable, Have a
Pepsi



**WANT MORE FOR YOUR MONEY
...KEEP YOUR EYE ON GRANTS**

SUMMER-IZE AND SAVE

**GRANTS LOW PRICES STRETCH VACATION
BUDGETS OVER ALL YOUR FAMILY & HOME NEEDS**

PATCHOGUE, L. I.

Use any one of Grants 3 "Charge-It" Plans. No money down.

EVERYTHING FOR YOUR DREAM HOUSE
FROM LONG ISLAND'S MOST COMPLETE
LUMBER YARD
FINANCING. PLANS, FREE ESTIMATES



For Same Day Delivery

Telephone GROVER 5-3232

"Have It Done By Drubm"

AL DRUHM & CO.

HEATING - AIR CONDITIONING - FUEL OIL

EMerson 3-6484

118 North Division Avenue

BLUE POINT

SWEZEY FUEL CO., INC.

HEATING OIL and OIL BURNERS

Oil Burners — Heating Systems Installed and Serviced

RIDER AVENUE GROVER 5-0270 PATCHOGUE

BEACH STREET PORT JEFFERSON

POrt Jefferson 8-0555

GET OUR
"WATCHDOG"
SERVICE



THE PRODUCERS

HARRY C. POMERAN established the Gateway in 1941 after a successful career in the business world. Because of his careful business management he holds the distinction of being one of the few producers who have kept their summer theatres operating successfully for more than ten years. Active in the fashion, entertainment, and hotel fields, he has built a wealth of good will for the Playhouse. Mr. Pomeran is a member of the Patchogue Rotary Club, the Chamber of Commerce, is a pastmaster of his Masonic Lodge, and was active in trade associations and the N. Y. Board of Arbitration.

DAVID SHELDON has been directing plays at Gateway since 1950 and is responsible for the artistic policy of the Playhouse. A former actor who began his career in summer stock at the age of 16, Mr. Sheldon made his off-Broadway directing debut with "The Skin of Our Teeth." He since has emerged as one of New York's most exciting young directors, his assignments having included "Dark of the Moon," "The Happiest Millionaire," and "The Diary of Anne Frank." After studying playwriting with Robert Penn Warren at the Yale Drama School where he received an MFA degree, David Sheldon has spent a good portion of his winters writing for television. He has acted in New York, Texas, and England and his most recent TV credit was Hemingway's "Fifth Column" on CBS.

STAN ALLAN has joined Gateway Playhouse as co-producer in charge of publicity, public relations and the supervision of personnel. Prior to his affiliation with Gateway, he served as station manager of Radio Station WPAC, Patchogue, and became distinguished as one of Long Island's best known radio personalities. Previously he was director of programs at WCOJ, Philadelphia. Stan Allan was associated with the Mike Wallace Interviews, the Dave Garroway Show and WOR-TV (Channel 9) and has done free lance TV commercials. He is married to the popular stage and screen actress Ruth Vickers.



PLAYHOUSE STAFF

Business Manager	Harry C. Pomeran
Promotion and Personnel Manager	Stan Allan
Director	David Sheldon
Production Designer	Frank Albright
Stage Manager	James Martin
Choreographer	Carolyn Bilderback
Musical Director	Frank Seibert
Master Carpenter	Otto Kress
Acting Coach	E. J. Poggi
Workshop Director	Peter Marble
Student Advisor	Jeanette Seibert
Photography	TEC
Box-Office Treasurer	James Mee
Accountant (CPA)	Jacob Simon & Assoc.



FORD

RIVERHEAD, N. Y.
PARK 7-4440

LYON
SALES — SERVICE

THE BIG



COMET

CORAM, N. Y.
SELDEN 2-3553



IRVING BELLER, part of the successful team known as Sybelle Carpets, has just completed a wonderful move to a bigger show of fine quality floor covering at 464 East Main Street, in Patchogue. Irv has a well-rounded background in the floor covering business and always gives his best in every appearance. He is married and the father of four children. When looking for the best see Irv at Sybelle Carpet, directly opposite Safeway in Patchogue. ATLantic 9-1112.



JERRY BELLER is the other half of the Sybelle Carpet team of fine performers. He resides in Patchogue with his wife and three children. Jerry has had many years of floor covering experience, the reason so many people give rave notices on his excellent ability to offer good service and quality plus the best price. Also in the cast of Sybelle Carpet is Howard Houston, Al Kattau, Harold Overton, Howard Funk and Stan Beller of the Commack store. See them soon at Sybelle Carpet's new store, 464 East Main Street in Patchogue. ATLantic 9-1112.



AM WPAC 1580 KC FM WPAC 106.1 MC

COMING SOON
WAPC RIVERHEAD
1570 KC

Long Island's Leading Radio Stations
Powerful 10,000 Watts, Patchogue, N. Y.

"The Gateway to Summer" at the Bee Hive is a bandana-draped invitation to your Summer of Summers on Long Island. Visit our "Gateway" Booth, First Floor . . . open daily with discount privileges for summer theatres, restaurants . . . information on bathing beaches, historical spots . . . where to go and what to do this Summer.

the **BEE HIVE** of Patchogue

East Main Street, Patchogue, New York

GRover 5-9000

"OUR ADVERTISERS REPRESENT RELIABILITY — PATRONIZE THEM"

THE SHOWS

"If you missed them on Broadway, see them at Gateway."

The most exciting line up of plays ever assembled in one season. Each comes to the Gateway stage with a guest star and a company of Equity actors.

(Schedule subject to change. Consult any Sunday newspaper for up-to-date play listings.)

JULY 4 (MONDAY) thru JULY 10

Jeffrey Lynn repeats the role in which he starred on Broadway. An adult love story—both moving and funny.



"A ROMANTIC DELIGHT!"
—ATINSON, Times

Jeffrey Lynn
and SHEILA COPELAN

Two for the Seesaw

"WILLIAM INGE'S BEST PLAY!"

—Times, News, Mirror, Journal-American, U.S. Col

THE DARK
AT THE
TOP OF
THE STAIRS



A powerful drama full of warm humor starring BARBARA LESTER and TV's STUART GRAYMOUNT. By the author of PICNIC, BUS STOP, & COME BACK LITTLE SHEBA. Set in the Mid-West. Playing JULY 12 thru JULY 17.

Fresh from Broadway



RIOTOUS COMEDY HIT
GOLDEN FLEECING
A wild scheme to outwit the U.S. Navy and defraud a gambling joint... full of many laughs.....

This TOM POSTON comedy-hit was cheered by the New York critics. This excursion into madness and hilarity is scheduled for JULY 19 thru JULY 24.

At Gateway JULY 26 thru JULY 31
Starring RONALD DAWSON

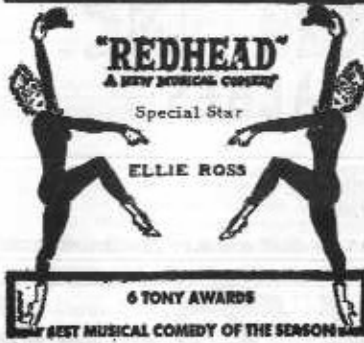


"DON'T MISS IT!"
"A Marvelous Play"
—ATINSON, Times
LOOK HOMEWARD, ANGEL
PULITZER PRIZE
A. T. O'BRIEN
CHIEF CLERK
HEAD

JOSEPH HARDY
in



SUNRISE AT CAMPOBELLO
—SOMEbody
The warm and humorous story of Franklin Delano Roosevelt, his home life, and problems prior to becoming President.
"MAGNIFICENT!"
A highlight of the summer season
AUGUST 2 thru AUGUST 7



"REDHEAD"
A NEW MUSICAL COMEDY
Special Star
ELLIE ROSS
6 TONY AWARDS
BEST MUSICAL COMEDY OF THE SEASON
A romantic murder-mystery-musical called by Dorothy Kilgallen "bright, tasteful, tuneful, cheerful." Good fun.
AUGUST 9 thru AUGUST 21.

AUGUST 23 thru AUGUST 28
Raw and shocking... full of passion and violence... a blockbuster. A powerful play by the top playwright.



TENNESSEE WILLIAMS'
"BIGGEST, MOST EXHILARATING JOEL OF THE SEASON, SHAKES THE THRATHE."
Sweet Bird of Youth
No children admitted.

"ONE OF THE BEST MUSICALS OF THE CENTURY"
—SOMEbody



Salad Days
WONDERFULLY FUNNY!
Direct from its run of six years in London, SALAD DAYS is the longest running musical in the World, surpassing MY FAIR LADY and OKLAHOMA. A madcap satire on Beatniks and the young generation.
AUGUST 30 thru SEPTEMBER 11.

ABOUT OUR ADVERTISERS

The advertising subscribers whose products and services you see displayed throughout this program are deserving of your patronage. These progressive business men and women recognize the prestige and prime opportunity to present their messages to a select and distinguished audience of prospective clients.

They also demonstrate by their representation a genuine desire to promote culture in the community. The presence of a professional summer theatre in a society attests to its economic importance, its underlying residential growth potential and its emergence as a focal point of cultural development in the surrounding area. Living theater may indeed be proud of these community minded men and women of high caliber whose representation in the Playbill we gratefully acknowledge.



George C. Haegle

LICENSED ELECTRICAL CONTRACTOR

FOR YOUR HOME,
YOUR BUSINESS
OR INDUSTRY

PHONE GROVER 5-4738

PATCHOGUE-PORT JEFFERSON RD.
MEDFORD, NEW YORK

"Suffolk's Only Decorating Dept. Store"

CLEAR-VIEW & FIALA

Incorporated

PAINTS — WALLPAPERS

ARTISTS SUPPLIES — UNPAINTED FURNITURE

212 East Main Street

Next to Sears in Patchogue

GRover 5-3165



BOHACK

...Where Better Meals Begin



UTILITY LINES, INC.
CHARTER COACHES

FOR

THEATRE PARTIES — SPECIAL OCCASIONS

For The Best Way To Get There

CALL:— UTILITY LINES

GRover 5-2524

BELLPORT — AAA

HAWKINS GARAGE

Immediate Emergency Repairs

Towing — Courteous Service

Opposite Post Office
Irv. Terwilliger

BELLPORT 7-0185
Cliff Miller

GROVER 5-4850

Patchogue Marine

OUTBOARD BOATS - MOTORS & ACCESSORIES

14 to 20 ft. PLYWOOD — FIBERGLAS
AND LAP STRAKE MODELS

89 Route 112
PATCHOGUE, L. I., N. Y.

1/2 Mile North of
SUNRISE HIGHWAY

Oak Park



NURSERIES, Inc.

LESLIE S. MAC ROBBIE, Pres. - E. PATCHOGUE, LONG ISLAND, N. Y.

STAUFFER PIANO CO.

Lester - Betsy Ross Spinets

Lowrey Organs — Pianorgans

208 MEDFORD AVENUE
PATCHOGUE, N. Y.

PHONE GROVER 5-2674

"SAY YOU SAW IT IN THE GATEWAY PLAYHOUSE PLAY-BILL"

I. SMITH & SONS, INC.

Wholesale Distributors of Plumbing and Heating Supplies



152 Medford Ave. Patchogue, N. Y.

Water Pumps - Oil Burners
GR 5-3710

ROLLIC, INC.

Manufacturers of Juvenile Playclothes

Visit Our Outlet Store in the Rollic Building for Guaranteed Savings

400 EAST MAIN STREET

PATCHOGUE, NEW YORK

THE COMPANY

(Resident Actors and Advanced Apprentices)

Joseph Walker, Audrey Perla, Vivian Kahan, Marco Figueroa, Douglas Armand, Sue Martin, Raymond Banacki, Franklin Jones, Deborah Amussen, Joyce Cohen, Herman Poppe, Steve Semmelmeier, Cynthia Lasky, Lillian Ashworth, Sheila Kupperman, Joel Novack, Mary Louise Scafidi, Edward Thomas, Inez Parker, Blair Brooks, Frances Butterfield, Jerry Nelson, Jack Nicholson, Pat Seibert, Zellie Auerbach.

PETER MARBLE serves in the dual role of actor and co-director at Gateway. He was responsible for initiating the Showcase Theatre in the Bellport Community Hall. Here plays are presented weekly by the students from Gateway's drama school. Performances are attended by the general public, invited guests, and talent scouts. Mr. Marble directed "Blue Denim" and "Madwoman of Chaillot" last season.

E. J. POGGI is Gateway's gifted acting coach and a director of the student workshop operated on the property next to Gateway Playhouse. His background includes a B.A. from the University of San Francisco, an M.A. from Harvard, and work toward a Ph.D. from Columbia University. Mr. Poggi teaches at the Herbert Berghof Acting Studio in New York City and is a director and instructor of dramatic arts at Cooper Union.

AUTHORIZED RADIO
& TELEVISION SERVICE

HONEST TV & RADIO REPAIRS

Phone: GRover 5-2993

— at the right price —

294 East Main St. Patchogue, N. Y.



ATLantic 1-8744

Financing

Hardware - Mason Material - Paints

Electrical Supplies

Mastic Beach Road

Mastic Beach



BELLport 7-0079

Emergency Phone

BELLport 7-0838

"Reliability Since 1900"

TIGHT ROOFS McRAE BROS

Roofing — Siding — Insulation — Aluminum Windows — Awnings

GR 5-4200 HA 7-2746 PA 7-2859 MO 9-1344
EAst Hampton 4-0212 SOuthampton 1-0113

BRONCO CHARLIE'S

ORIGINAL LOG CABIN RESTAURANT

Specializing in Sauerbraten and Dumplings

OPEN EVERY DAY SPECIAL PORTIONS
11 A.M. TO 10 P.M. FOR CHILDREN

SAyville 4-1132

MONTAUK HIGHWAY OAKDALE, N. Y.



BIANCO MOTORS, INC.

AUTHORIZED SALES and SERVICE
DELIVERIES HOME AND ABROAD



4120 SUNRISE HIGHWAY
SAYVILLE, N. Y.

TELEPHONE SAYVILLE 4-0805

WARM AIR
Furnace, Oil Burner,
Controls, Ducts,
Fuel Tank
\$750

INSTALL HEATING SYSTEMS NOW
AVOID WINTER INCONVENIENCE
COMPLETE INSTALLATION BY

HOT WATER
Boiler, Burner, Con-
trols, Circulator,
Radiators, Fuel Tank
\$885

SEED-LAK

PLUMBING and HEATING, INC.

PATCHOGUE, N. Y.

GRover 5-1667
27 MEDFORD ROAD

"OUR ADVERTISERS REPRESENT RELIABILITY — PATRONIZE THEM"

WEEK BEGINNING JULY 12th, 1960

HARRY C. POMERAN, DAVID SHELDON & STAN ALLAN

present

WILLIAM INGE'S

New Play

THE DARK AT THE TOP OF THE STAIRS

with

STUART GRAYMOUNT BARBARA LESTER TED CHAPMAN

and introducing THELMA DAVIDSON

Designed by
FRANK ALBRIGHT

Lighting by
JIM MARTIN

Directed by
DAVID SHELDON

CAST
in order of appearance

RUBIN FLOOD	STUART GRAYMOUNT
CORA FLOOD	BARBARA LESTER
SONNY FLOOD	MICHAEL BROCKSTEI
REENIE FLOOD	MARY LOUISE SCAFIDI
FLIRT CONROY	SHEILA KAY
MORRIS LACEY	TED CHAPMAN
LOTTIE LACEY	THELMA DAVIDSON
SAMMY GOLDENBAUM	JERRY NELSON
PUNKY GIVENS	RAYMOND BANACKI

"OUR ADVERTISERS REPRESENT RELIABILITY — PATRONIZE THEM"

THE PEOPLES NATIONAL BANK OF PATCHOGUE

CORDIALLY INVITES
YOUR ACCOUNT



115 EAST MAIN STREET
PATCHOGUE, N. Y.

DRIVE-IN DEPOSIT WINDOW — EASY PARKING
MID-ISLAND OFFICE — Route 25, SELDEN, N. Y.

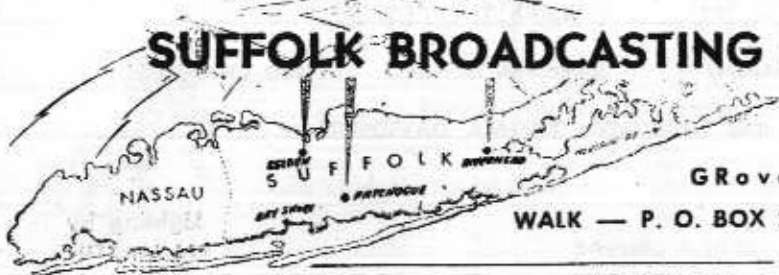
Member Federal Deposit Insurance Corp

WALK fm
97.5 mc
15,000 w.

WALK
1370 kc
500 w.

WRIV
1390 kc
1000 w.

SUFFOLK BROADCASTING CORPORATION



GRover 5-5200

WALK — P. O. BOX 230 — Patchogue, L. I., N. Y.

WALK - 1370 kc. • WALK-FM - 97.5 mc. • WRIV - 1390 kc.



YOUR DEPARTMENT STORE IN PATCHOGUE

**SWEZEY
AND
NEWINS**

GRover
5-0280

SERVING SUFFOLK
SINCE 1894

Grover
BUILDING
SUPPLY

536 EAST MAIN STREET
PATCHOGUE, N. Y.

Open Weekdays 7:30 A.M. to 5 P.M.—Fri. to 8 P.M.

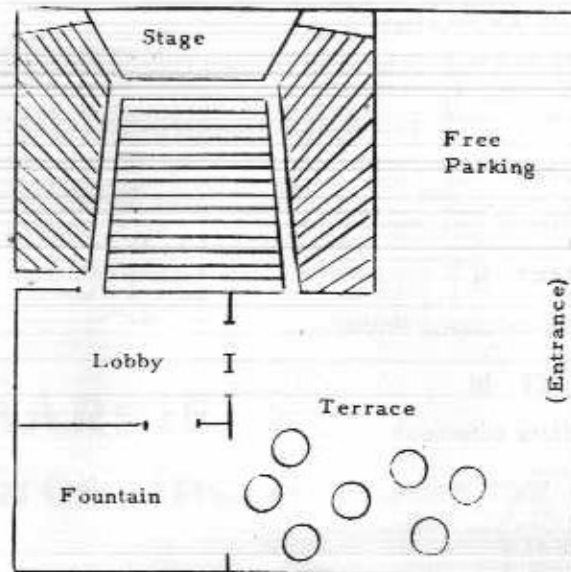
DIRECT SOURCE FOR
LABOR & MATERIALS
TO HOMEOWNERS

Headquarters of Operation
"HOME IMPROVEMENT"
Finances Arranged: Construction, Garages,
Basements, Improvements

GRover 5-1830

"OUR ADVERTISERS REPRESENT RELIABILITY — PATRONIZE THEM"

PLAYHOUSE SEATING PLAN



TICKET INFORMATION

Individual seats:	\$1.85	\$2.50	\$3.30
Saturday Nights:	2.50	3.30	3.85
Saturday Bargain Matinee (children 1/2 price)			

CURTAIN 8:30 Sat. Matinee 2:15

BUY A BOOK OF 10 \$2.50 tickets for only
\$20.00 — SAVE \$5.00

20% DISCOUNT FOR THEATRE PARTIES

Information at the Box Office or
phone BELLport 7-1133



FIRE NOTICE:—The exit indicated by a red light and sign nearest to your seat is the shortest way to the outside. If you must use this door, please DO NOT RUN — WALK TO THAT EXIT.

"OUR ADVERTISERS REPRESENT RELIABILITY — PATRONIZE THEM"

Rose Jewelers

KNOWS
SOME SECRETS

about **Diamonds**



but we'll gladly
share them
with you

ROSE JEWELERS
and
THE AMERICAN GEM SOCIETY

The American Gem Society is a selected group of 650 jewelers in the U. S. and Canada, dedicated to the development of trust and confidence in the retail jeweler by the general public and the advancement of scientific education within the jewelry industry so as to eliminate any misrepresentation caused by ignorance of the true nature and value of merchandise offered for sale.

Among the standards for the society, a member:

- Must enjoy a reputation for unquestioned integrity in its own community
- Must take and pass annual exams on the latest developments in gemology.

Rose Jewelers who are registered jewelers, American Gem Society, stand ready to serve you with professional advice on diamonds and fine jewelry.

Rose Jewelers



REGISTERED JEWELERS
AMERICAN GEM SOCIETY

74 EAST MAIN STREET
PATCHOGUE

SYNOPSIS OF SCENES

The home of Rubin Flood, his wife and two children in a small Oklahoma town close to Oklahoma City. The time is in the early 1920's.

ACT I

A Monday afternoon in early spring.

ACT II

After dinner, the following Friday.

ACT III

The next day, late afternoon .

: — :

Staff for "The Dark at the Top of the Stairs"

Stage Manager Jim Thomas
 Costumes Frances Butterfield
 Properties Deborah Amussen and Gay Evans
 Lights Frank Jones
 Sound Marco Figueroa
 Director's Assistant Sue Martin

WILLIAM INGE (The Author) has been regarded as one of the three most important American Playwrights of the mid-century era (the other two being Tennessee Williams and Arthur Miller, ever since his COME BACK LITTLE SHEBA electrified theatre-goers in 1950. His PICNIC and BUS STOP won him the Pulitzer Prize and New York Drama Critic's Circle Awards. Mr. Inge was born and educated in Kansas.

DIRECTOR'S NOTES: "The Dark at the Top of the Stairs" represents the shadowy quality of the future that seems so ominous and terrifying to growing children. This is the basic theme of the play. It also deals with the THINGS THAT PEOPLE DO NOT KNOW ABOUT EACH OTHER. Every character in the play is **afraid** of something. Perhaps, suggests the playwright, there is nothing to fear if somebody is climbing the stairs with you (thru love, compassion, and understanding). Finding the right companion is the perilous task. The play is an autobiography, seen thru the eyes of Sonny.

ZEIDLER MOTORS, Inc.

Among the Family of Fine Cars

Lincoln Continental — Mercury — Renault — Comet — Peugeot — Lark by Studebaker

Route 112

GRover 5-2900

MEDFORD, N. Y.

"OUR ADVERTISERS REPRESENT RELIABILITY — PATRONIZE THEM"

"Suffolk County's Kitchen Center"



A COMPLETE SERVICE
 • Kitchen Cabinets
 • Exhaust Fans
 • Formica Tops
 • Hoods
 • Vanities
 • Installation
 (4 Miles East of Patchogue)
 MONTAUK HIGHWAY

AT 6-9270
 AT 9-1145

Free Estimates
 Financing Arranged
 NO JOB TOO SMALL
 VISIT OUR Showroom & Factory

BELLPART, N.Y.

BARRIE Bros., Inc.

"THE STANDARD OF THE WORLD"



CADILLAC — OLDSMOBILE

EAST MAIN STREET

PATCHOGUE, N. Y.

Maletta's INC.

TV — Sales & Service

TV - APPLIANCES - HI FI
 210 Medford Avenue
 PATCHOGUE, L. I.

Magnavox — Hi Fi & Stereophonic Sound
 Hot Point — Kelvinator
 Frigidaire — RCA Whirlpool

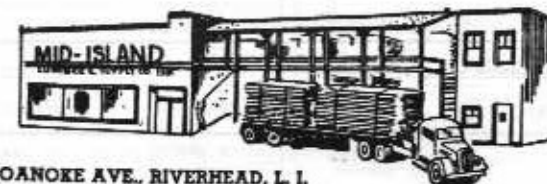
GE — Color TV
 GRover 5-8300

PUBLIC ADDRESS & STEREOPHONIC SOUND SYSTEMS
 AT GATEWAY INSTALLED BY MALETTA

Mid-Island Lumber & Supply Co., Inc.

Lumber and Mason Material

Free Delivery Anywhere in Suffolk County



Patchogue-
 GRover 5-0914

415 ROANOKE AVE., RIVERHEAD, L. I.

Riverhead-
 Park 7-2430

"OUR ADVERTISERS REPRESENT RELIABILITY — PATRONIZE THEM"

Air Conditioned Free 21" TV

Patchogue Motel

RESTAURANT & COCKTAIL LOUNGE
Show Place of Long Island

EMERSON 3 { 6880
 { 9880 SUNRISE HIGHWAY

GR 5-2071

BEN'S GLASS SERVICE

All Types of Safety Glass
Curved or Tinted
We Specialize in Auto Glass

138 Medford Avenue Patchogue

PATCHOGUE FORD

FALCON — FORD — THUNDERBIRD — FORD TRUCKS



501 Medford Avenue GR 5-1133

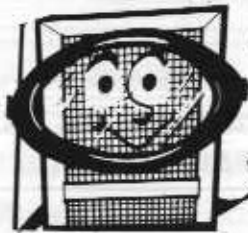
ARCH PRESERVER SHOES

PATCHOGUE NEW YORK

Lentin's

DRESSES - GOWNS - SPORTSWEAR
COATS - SUITS

45 E. Main St. PATCHOGUE 54 E. Main St. RIVERHEAD



SCONZO & SONS

Aluminum Storm Windows

SHOWROOM
457 E. MAIN STREET
PATCHOGUE, L. I.

GROVER 5-0020

YOU FURNISH THE GIRL!
LET US FURNISH THE RING!

KALLER'S JEWELERS

DIAMOND SPECIALISTS SINCE 1899

30 East Main Street GRover 5-2002 Patchogue



JEFFREY LYNN has long been regarded by playgoers, movie fans, and television viewers as one of our most refreshing personalities. A comparative captive of the Hollywood sound stages, with regular excursions into the living theatre, Mr. Lynn has had his full share of success on the Broadway rostrum including, "The Long Days" and "Lo and Behold." After a major triumph as Jerry in "Two for the Seesaw" on Broadway, he flew to Hollywood to film "Butterfield 8" with Elizabeth Taylor (soon to be released). Gateway is proud to have him repeat his Broadway starring-role in "Two for the Seesaw."



ELLIE ROSS has emerged as an international musical-comedy personality in only a few years, captivating audiences in "My Fair Lady," "Showboat," "Can-Can," "Pajama Game" and many others. Her one woman musical revues have toured all over the United States, Canada, South America, and Nassau including the most prominent clubs and hotels. Her many New York TV appearances have included The Play of the Week, US Steel, Studio One. Ellie Ross appears as Essie in REDHEAD after scoring a success as Sharon in FINIAN'S RAINBOW. She is equally competent as a dramatic actress.



JOSEPH HARDY has achieved prominence on Broadway in such productions as "Detective Story," "Mr. Roberts," "The Male Animal," and the most recent "Cut of the Axe." Having been a standby for Ralph Belamy, who has just completed filming "Sunrise at Campobello," Mr. Hardy is perhaps the most ideal candidate for the role of Franklin Delano Roosevelt. Television audiences have seen him on "The Secret Story," "Edge of Night," and "New York Confidential." He recently completed the filming of a new TV series called "The Playboy" with Steve Cochran.

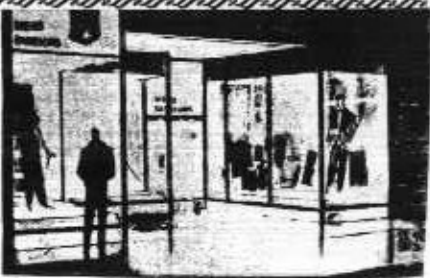
JIM MARTIN is at the center of all Gateway Playhouse productions because as Stage Manager he functions as a liaison between all members of the production staff. Lighting, sound, props, rehearsal schedules, construction, assistant directing, and a hundred other elements of production are managed by him. Mr. Martin has worked in theatres across the country including the Playhouse Theatre in Houston, Texas, and the Allenberry Playhouse in Pennsylvania. He is a skilled actor and has directed such productions as "LeMalentendu" by Camus, and "Bus Stop."

Mac Kanner

Quality Merchandise Since 1925
HART SCHAFFNER & MARX CLOTHING
BOTANY "500" CLOTHING
STETSON HATS - HATHAWAY SHIRTS

...Visit Our...
New University Shop

East Main Street Patchogue, N. Y.



"A Nice Place To Do Business"

HOLZ MOTORS

LATE MODEL USED CARS

E. Main St. at Evergreen Avenue
Patchogue, N. Y. GRover 5-4477
Where Good Cars Get Together

WESTIN'S BOAT SHOP

Thistle Wheeler
Highlander Sailboats Cruisers
Jet—14 Sea Skiffs
Complete Facilities for Sail and Power
River Road SAyville 4-1526

QUARTER'S GARDEN CENTER

Garden Supplies — Nursery Items
Specializing in Landscaping and Lawns
WE GIVE BLUE STAMPS
Montauk Hwy. Bellport, L. I. AT 6-9233

Quality Clothes Deserve Colony Cleaning

Colony Cleaners & Dyers
STORAGE VAULT ON PREMISES
GROVER 5-4060

98 S. OCEAN AVE.
PATCHOGUE, N. Y.

295 MEDFORD AVE.
PATCHOGUE, N. Y.

GRover 5-1650

MEDFORD FARM STAND

FRESH PRODUCE DAILY
— CUT FLOWERS —

Nursery and Garden Supplies

Route 112, Private Road
MEDFORD STATION, L. I.

Jr. Deb Inc.

CLOTHES FOR PRE-TEENS — TEENS — YOUNG JUNIORS

18 E. MAIN STREET
PATCHOGUE, N. Y. GR 5-2212

Cardinal CARPET SHOP

LINOLEUM—FLOOR AND WALL TILE

JOHN F. DERBY OFFERS HONEST VALUE

89 EAST MAIN STREET GR 5-1333 PATCHOGUE

George's

RADIO & TELEVISION SHOP

SALES AND SERVICE
RECORDS - PHOTO - HI FI - STEREO
ANTENNA INSTALLATIONS

SOUND SYSTEMS

66 MAIN ST.
SAYVILLE, N. Y.

FOR T. V. SERVICE
SAyville 4-3370
GRover 5-0834
66 N. OCEAN AVE.
PATCHOGUE, N. Y.

GRover 5-2531

STANLEY'S

Bedding and Furniture Co.
Patchogue's Leading Furniture Store

44 East Main St.

Patchogue



Patchogue

GRover 5-4389

Power Tool Co.

Rentals - Sales - Repairs

Floor Sanders - Power Mowers

All Power Tools

298 MEDFORD AVE.

PATCHOGUE, N. Y.



For Gracious Dining

BELLPORT COUNTRY CLUB RESTAURANT

Modern New Decor Howard T. Rose, Manager Bar and Cocktails
 All cordially Welcome — Delicious A La Carte

LUNCHEON DINNER AFTER THEATRE
 11 - 3 P. M. 5 - 10 P. M. Fri., Sat., Sun. til 12 P. M.

At the Beautifully Landscaped Village Golf Course.

South Country Road Atlantic 6-9862 Bellport, N. Y.

CIRO'S

Italian Food at its Best
STEAKS — CHOPS — SEAFOOD
 Complete Dinners Served Till 1 A. M. Fri. & Sat. Nights

Sunrise Highway Islip Terrace
 2 BLKS. EAST OF RTE. 111 JUNIPER 1-3100

BELLPORT TAXI

WILL TAKE YOU THERE
 ANYWHERE — ANYTIME

Telephone Bellport 7-0239
 R. R. Station Bellport

"A Good Place to Eat —
 Where Old Friends Meet"



On Montauk Highway E. Patchogue

THE LINDENMERE

HOTEL and RESTAURANT
 Summer Resort on the Water
 Featuring Deluxe Swimming Pool
 2½ ROOM UNITS FOR SUMMER OR WINTER RENTAL
 Center Moriches AT 4-0553

AT 4-0803

COLONIAL ARMS RESTAURANT

Where Dining is a Pleasure
 Not an Extravagance
 Steak — Chops — Lobster — Sea Food
 Montauk Highway Center Moriches

GRover 5-9769 11 A. M. to Midnight

樓 珍 寶

PATCHOGUE ROYAL RESTAURANT
 Real Cantonese Luncheons
 & Family Dinners
 Wines and Liquors — Air Conditioned
 68 West Main St. Patchogue

RO 9-8986

LAKE VIEW INN

One of L. I.'s Picturesque Restaurants
 Dancing Saturday to Jimmy Jines Band
 Paul at the Organ—Fri - Sat - Sun
 Private Beach Boating Bowling

Lake Shore Road Lake Ronkonkoma

NELSON'S RESTAURANT

Breakfast - Lunch - Dinner
 open daily
 7 a.m.-11 p.m. - Fri. & Sat. til 12 p.m.
 Full Course Meals at Pleasing Prices
 Turkey — Scallops — Roast Beef

3-5 East Main Street Patchogue

The Better Ole

DANCING SATURDAY NIGHTS Comfortably Air Conditioned

— Delightful Dining — Continental Cuisine —
 Exquisite Newly Remodeled Dining Room
 Open After Theatre — Closed Tuesdays

Recommended by Cue—Gourmet—Esquire—Diner's Club

South Country Road Bellport 7-0568 Brookhaven, N. Y.

Canoe Place Inn

ONE OF LONG ISLAND'S FINEST RESTAURANTS
 Luncheon — Cocktails — Dinner FOR RESERVATIONS
 Entertainment Nightly Phone HAMPTON Bays 2-0150

ROOM ACCOMMODATIONS — BUNGALOWS — EFFICIENCY APARTMENTS

BANQUET FACILITIES FOR 1000

MONTAUK HIGHWAY — HAMPTON BAYS

Cool, Delightful Dining
 on the Shores of the Connetquot River

Snapper INN

Shore Drive Oakdale
 Sayville 4-0248

RIDGELY'S

FABULOUS STEAKS

WATER MILL, L.I.

MUSIC, DANCING NITELY

LAND'S END MARINA MOTEL

Come by Land or Sea
 Dockage — Pool — Fishing Station
 Cool Restful Efficiencies
 Day, Week, Month, Season
 70 Browns River Road SA 4-2040
 NEXT TO LAND'S END RESTAURANT

LAND'S END RESTAURANT

One of Long Island's Finest
 Member Diner's Club and American Express
 "on the bay"
 SAYVILLE, N. Y.
 Reservations SAYville 4-1888

Deli-King

Luncheon & Dinners
 The Best Hot Corned Beef
 and Hot Pastrami Sandwich
 in Suffolk County

85 W MAIN STREET
 PATCHOGUE, N. Y.

GRover 5-9744

Donato's RESTAURANT

ITALIAN AND AMERICAN CUISINE
 PIZZA PIES OUR SPECIALTY
 SOUTH COUNTRY ROAD
 EAST PATCHOGUE, L. I. N. Y.

ORDERS TO TAKE OUT PHONE GROVER 5-3366



JOHN J. ROE & SON

INSURANCE — REAL ESTATE

Since 1898

Main Office
125 East Main St.
PATCHOGUE, N. Y.
GRover 5-4000

Branch Office
118 Main Street
BELLPORT, N. Y.
Bellport 7-0700



GRover 5-3910-3911

CASSEL G.M.C. TRUCK SALES

AUTHORIZED DEALER
SALES - SERVICE - PARTS

2 ACCESS ROAD
COR. N. OCEAN AVENUE
PATCHOGUE, L.I., N.Y.
WILLIAM D. CASSEL

PATCHOGUE PLATE GLASS CO.

Auto Glass Installed While You Wait

CURVED WINDSHIELDS

Clear and Tinted Glass for Every Make of Car
Glass for Your Car Is Always in Stock—Immediate Service

GRover 5-1790

64-66 West Main Street Patchogue



ANVIL - BELL FENCES

For Safety — For Lifetime Use
We Furnish, Deliver and Install

GRover 5-1917

Waverly Ave. Patchogue

CARL and BOB'S OUTDOOR STORES "Leisure Wear of Distinction" MEN — BOYS

Main Street Patchogue Riverhead

GRover 5-0445

South Shore Convalescent Home

KATHERINE MCPEAK, R.N. 286 NORTH OCEAN AVENUE
JAMES MCPEAK, R.N. PATCHOGUE, NEW YORK



BARBARA LESTER was chosen by Gateway Playhouse because of her outstanding portrayal of Olive in Alan Schneider's production of "Summer of the 17th Doll" in New York this winter. Her Broadway credits include "Legend of Lizzie" and "Protective Custody." Barbara Lester toured in the National Company of "Separate Tables" and has appeared with many prominent stock companies such as the Ann Arbor Drama Festival, the Arena Stage in Washington, D. C., and the Woodstock Playhouse. Acting in many types of roles from Jennet in "Lady's Not for Burning" to Patty in "The Moon Is Blue," Miss Lester is one of the most versatile actresses on the American stage.



RONALD DAWSON is certainly a name familiar to Broadway theatergoers. His Broadway stage credits include "Witness for the Prosecution" and "The Sleeping Prince" and his many screen appearances have ranged from "Mutiny on the Bounty" to the recent "Odds Against Tomorrow." Mr. Dawson has been seen in over 500 major television shows including US Steel, Armstrong Circle Theatre, and the Goodyear Playhouse. Born in Johannesburg, South Africa, Ronald Dawson was trained in the British Empire. His stage success also include "Middle of the Night" and "Silk Stockings."



SHEILA COPELAN, acclaimed as one of the most exciting young actresses in the profession, has studied acting with Lee Strasberg (Actors Studio). She has appeared in "Member of the Wedding" and "Charley's Aunt" and her television credits include "You Are There," "Frontiers of Faith" and "Mr. Peepers." Children will remember her as "Penny" from Storyland on the "Funny Bunny Show." Gateway Playhouse is fortunate to have Sheila Copelan direct from her successful run of "Two for the Seesaw."

FRANK SEIBERT is an accomplished musician as well as a successful musical director, having played with a number of bands and orchestras in New York. He has appeared in many hotels, night clubs, and on television ("Masquerade Party"). Theatre audiences know Frank Seibert mainly for his musical direction of "Bells Are Ringing," and "Say Darling." He recently directed "Showboat" for Theatre 5 in Huntington and is Director of Music for Central School District No. 5. At Gateway he is staff musical director and vocal coach.



DIVIDENDS FROM DAY OF DEPOSIT . . . COMPOUNDED QUARTERLY

The UNION SAVINGS BANK

OF PATCHOGUE, N. Y.

Corner So. Ocean Ave. and Church St. Tel. GR 5-5800

Banking Services 9 A.M. to 6 P.M. Daily Except Sat., Fri. Eve. 6:30 to 8 P.M. Member FDIC

RE-UPHOLSTERY
by NORMAN KING & SON

BEFORE

AFTER

CUSTOM SLIP COVERS
Covers not set off in the hall, hallway, bedroom, etc. Free price estimate, slippers, slippers, etc. with, etc.

FINEST QUALITY REUPHOLSTERY
CUSTOM RESULT BY EXPERT CRAFTSMEN - FINEST FABRICS IN MODERATE COSTS. FREE ESTIMATE. Free Pick-Up & Delivery. INSURANCE ESTIMATES.

FREE ESTIMATES CONVENIENT TERMS

NORMAN KING & SON
MEDFORD AVE. (RT. 113) PATCHOGUE • 126 MI. N. of SUFFERE HWY'S
GROVER 5-1042 SERVING SUFFOLK COUNTY FREE PARKING FOR 45 YEARS

Adjacent to Mid-Island Upholstery
PATCHOGUE

MARINE INC.

DESIGNERS & MANUFACTURERS

BOAT CUSHIONS - WINTER COVERS
NAVY TOPS - PILOT SEATS
CABANA - SWIMMING POOL COVERS

GRover 5-2863
348 E. MAIN ST.

"IF IT'S FROM

Havils JEWELERS

Patchogue — Riverhead
YOU KNOW IT'S GUARANTEED"

Suffolk's Only Men's Formal Wear
Specialty Shop
R. S. V. P.
Rental — Sales

Sunrise Highway Islip, N. Y.
JUNiper 1-4500

Anglia — Zephyr Six — Consul
Convertibles — Station Wagons
Thames Trucks
English Built FORD The New Zodiac
HAYMAN'S AUTO SALES and SERVICE
New and Used Cars
GRover 5-0846
207 East Main Street Patchogue

MUFFLER KING INC.

Call Atlantic 6-9893
MONTAUK HWY., BELLPORT

LIFETIME GUARANTEED
MUFFLERS

Branches:
Brooklyn
Bronx
Jamaica
Yonkers

Bob Ritchie's Boat Yard
Marine Supplies - Storage

Scott Outboard Motors

CRUISERS, BOATS TRAILERS CUSTOM SKIFFS

168 WEST AVENUE
PATCHOGUE, N. Y. Tel. GR 5-1609

MAYER'S *Flower Cottage*

399 Medford Ave. - Patchogue, N. Y. - GR 5-1779

MAZZOTTI and RUSSO, INC.
Licensed
Plumbing - Heating and
Air Conditioning
Deep and Shallow Well Pumps
GR 5-4245
30-32 Railroad Ave., Patchogue

GULF
SOLAR HEAT
heating oil

DENNIS MAUD TREE EXPERT CO.

COMPLETE TREE SERVICE

Diagnosis Without Charge

Pruning — Fertilizing — Tree Removal — Spraying

Tree Surgery — Tree Moving — Poison Ivy Control

615 East Main Street

GRover 5-1233 — 2880

Patchogue, L. I.

Richard York

OF PATCHOGUE

Daniel Green

Dr. Posner

Red Cross Shoes

Roblee

Shoes

Cobbies

Florsheim

14-22 SOUTH OCEAN AVENUE
PATCHOGUE, L. I., NEW YORK



EXPERT
DRY
CLEANING

Head of Neck Road
Bellport, N. Y.

Phone
BELLport 7-0347

MORLEY'S FLOWERS

Flowers for All Occasions

Member Florist Telegraph Del. Ser.

Tel. GRover 5-1980 Patchogue

BUY WITH
CONFIDENCE



USE A
NAME BRAND

THE SHERWIN-WILLIAMS Co.

PAINTS, VARNISHES, LACQUERS, LEADS, OILS, ENAMELS,
BRUSHES AND PAINTERS' SPECIALTIES

225 East Main Street PATCHOGUE GR 5-2757

Sayville

CHARLES P. DICKERSON

Real Estate — Insurance

Homes — Waterfronts — Farms

— Business Properties —

31 Main Street

SAyville 4-0164



JEANETTE SEIBERT was recently seen as Mummy Yokum in the musical hit "L'il Abner." She has been featured in over 20 musical and dramatic productions including "Brigadoon," "Finian's Rainbow" and "Song of Norway." Gateway audiences first saw her as Mme. Dubonnet in "The Boy Friend." Her extensive professional experience includes opera, solo work in churches, and concert appearances. A versatile comedienne, Jeanette Seibert scored a hit in "Romanoff and Juliet."



STUART GRAYMOUNT, popular television personality, is a veteran of 14 years of broadcasting. He was bit by the acting bug while in his Freshman year at Yale and later made his stage debut in "My Sister Eileen." His motion picture credits include "Viva Zapata" and recently "Please Don't Eat the Daisies." Mr. Graymount's varied career has included staff announcing for WQXR and WNEW and three years with Young and Rubicam's advertising agency as a producer-director.



CAROLYN BILDERBACK is a prominent modern dancer as well as a gifted actress and choreographer. She appeared this winter with the Katherine Litz Concert Group in New York City and has had extensive experience including "Carmen," "Prima Donna" and numerous musical comedies. Her most recent acting credit was in John Hale's production of "Waltz of the Toreadors" in N.Y. Miss Bilderback was on the teaching staff of the Aspen Music School in Colorado for three summers and was associated with Marian Rich in teaching Voice in N. Y.

FRANK ALBRIGHT is one of the most dedicated craftsmen in the American theatre. As Gateway's production manager and designer he plans, executes, and coordinates all the visual components of the Playhouse productions. An officer in the American Educational Theatre Association, Mr. Albright was active in the recent AETA Convention in Washington, D. C. Creatively active as an instructor and director in the West Haven, Connecticut, school system, he has had many years of experience in the professional theatre. His MFA degree was earned at the University of Oklahoma.

"THE COOLEST WAY TO GO TO THE BEACH"

DAVIS PARK FERRY CO.

MULFORD STREET
PATCHOGUE

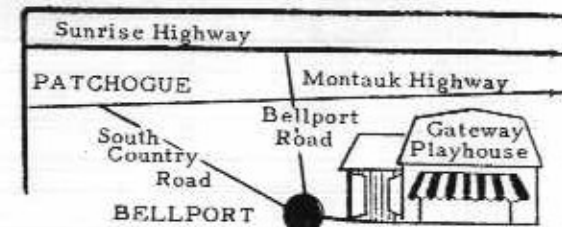
PHONE
GR 5-1665

Frequent Trips to and from the Beach on Regular Schedule

RELAX IN COOL COMFORT



LOCATION



GEM OIL COMPANY INCORPORATED

OFF TO A CAREFREE* VACATION



*THANKS TO OUR PRE-VACATION SERVICE

470 WEST MAIN STREET
GROVER 5-3220

GASOLINE — FUEL OIL
MOTOR OIL — DIESEL OIL
INDUSTRIAL OIL



PATCHOGUE
BRENTWOOD 3-8111