

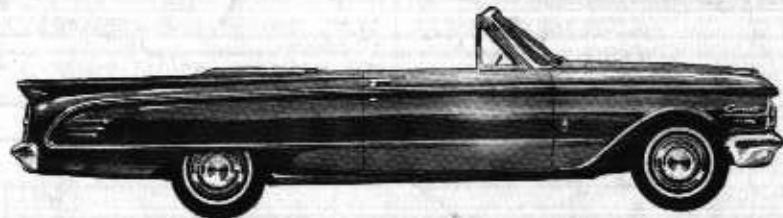


*Lincoln Continental*

*Classic Beauty in a smart new size*



**MERCURY**



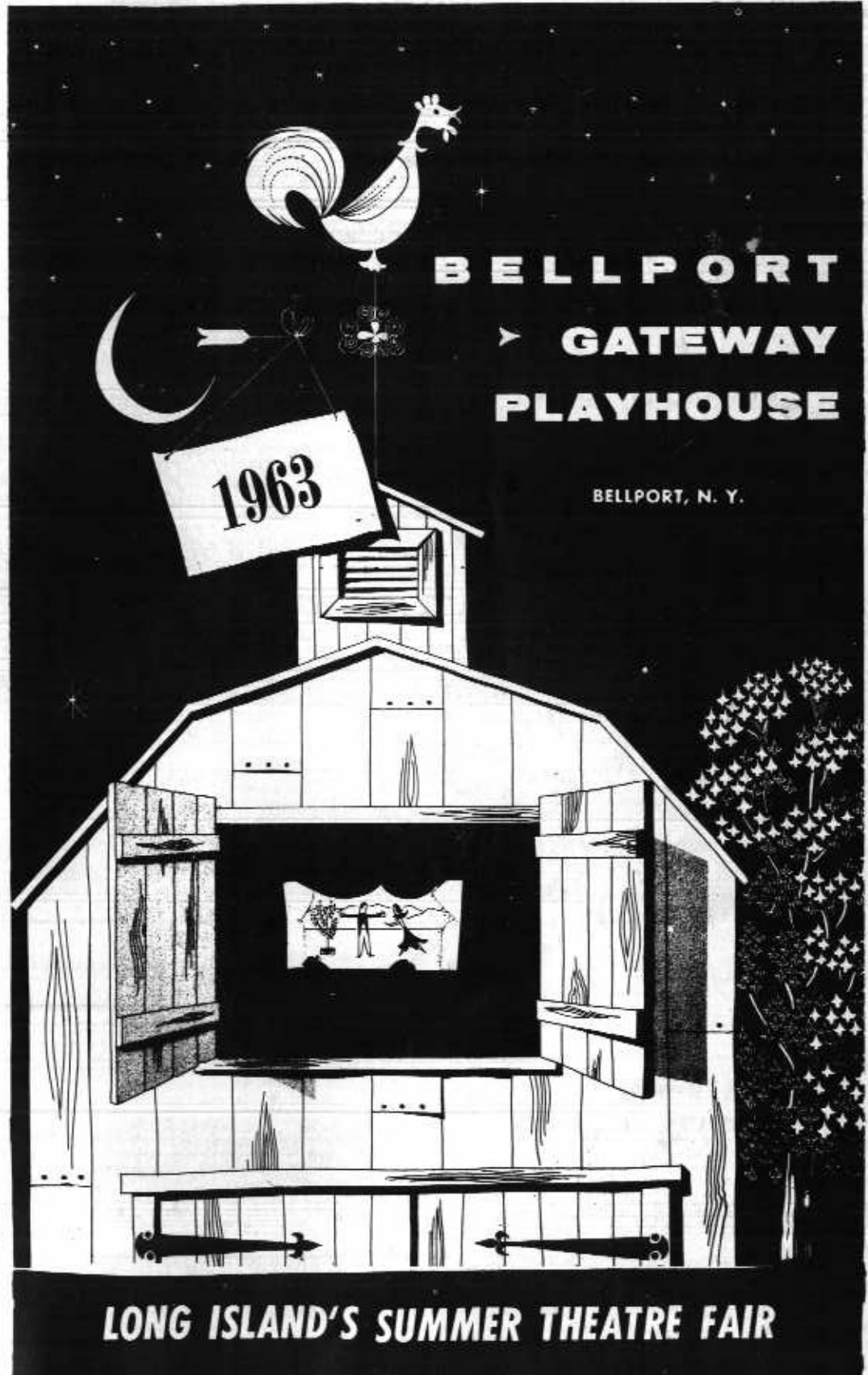
**comet**

*so much luxury and style...so little maintenance*

**ZEIDLER MOTORS, INC.**

ROUTE 112 GROVER 5-2900 MEDFORD, N. Y.

"OVER AN ACRE of PRIME USED CARS TO CHOOSE FROM"



**BELLPORT  
GATEWAY  
PLAYHOUSE**

BELLPORT, N. Y.

**LONG ISLAND'S SUMMER THEATRE FAIR**

**BROADWAY PLAYS in AIR CONDITIONED COMFORT**

EVERYTHING FOR YOUR DREAM HOUSE  
FROM LONG ISLAND'S MOST COMPLETE  
LUMBER YARD  
FINANCING, PLANS, FREE ESTIMATES



For Same Day Delivery

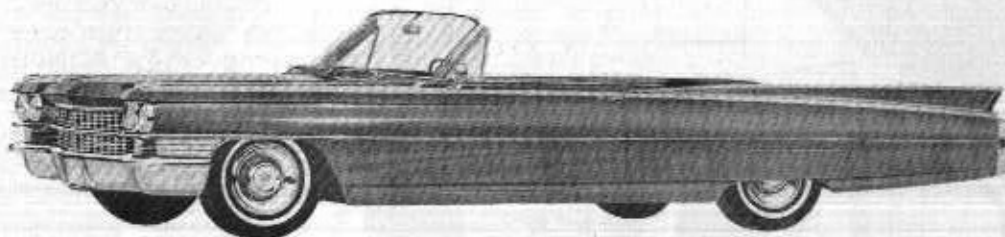
For Same Day Delivery

Telephone GROVER 5-3232

## CAN A CADILLAC SURPASS ITS OWN GREAT REPUTATION?

The 1963 Cadillac does just that. In beauty . . . in luxury . . . in performance . . . and in craftsmanship, the new Cadillac creations surpass the famous cars they supersede. Under the hood is a greatly refined engine. It is lighter in weight, quieter and smoother in operation than ever before. And in the way the 1963 Cadillac rides and handles and responds, where, indeed, many believed perfection had been already attained, Cadillac engineers have wrought miracles of improvement.

*Cadillac  
Masterwork  
of the  
Motoring Age*



CADILLAC and OLDSMOBILE  
SALES, SERVICE and PARTS

**BARRIE  
BROS. INC.**

318 East Main Street  
PATCHOGUE, N. Y.  
GROVER 5-1100

**Valley  
NATIONAL BANK**  
LONG ISLAND  
Bellport Office:  
32 Station Road  
BELLPORT, NEW YORK  
AT 6-0090



CONVENIENT PARKING — FRIENDLY SERVICE  
WHERE YOUR DOLLARS MAKE \$EN\$E



## BELLPORT GATEWAY PLAYHOUSE

SOUTH COUNTRY ROAD BELLPORT, L. I., N. Y. BOX OFFICE ATLANTIC 6-1133

Twenty-one years ago, the present producers of Gateway started the Gateway project in what was then the old Mott barn. The hay lofts were brimming over with hay gathered from the fields on the Gateway farm. From cow and horse stalls, the animals listened while a group of your ambitious actor-directors rehearsed lines for their first play. Fearless and determined, the first Gateway company of performers chose Shakespeare as its first public effort. The stage setting was in "theatre-in-the-round" and the general admission was \$1.00. Barn swallows watched from their nests in the rafters.

In 1949 the theatre was remodeled and established as a summer stock company. Little by little the hay lofts became balconies, the cow stalls became dressing rooms, and the playhouse grew into one of the most romantic and intimate summer theatres on the East Coast. Many wonderful things have happened for Gateway during this time. A discerning and enthusiastic group of patrons have steadily supported Gateway's efforts and superlative comments have come from the press. Important talent representatives, agents, and producers have shared in the artistic efforts.

A second theatre, the Gateway Showcase Theatre, in the adjoining red barn, functions as an experimental workshop featuring new plays, new talent, and the work of students enrolled at the Gateway Theatre Workshop. The extensive training program offers daily classes in acting, voice, dance, speech, and motion picture technique to 100 young students. A film studio for 16mm camera work has been completed on the premises and is used for instructional and experimental motion picture work.

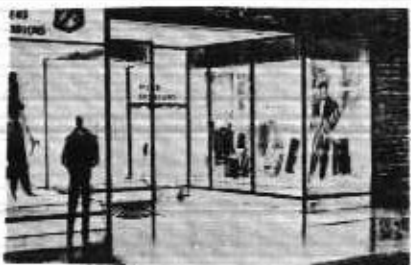
Three years ago, Joyce Selznick, Eastern Story and Talent Director for Columbia Pictures, was impressed with the work and physical plant at Gateway and pursued the possibility of training Columbia's new young stars and talent discoveries here. The Gateway-Columbia tie was made official and has resulted in the development of Gateway's talent farm. James Darren, Deborah Walley, Nancy Kovack, and Clay Cole were among the first Columbia actors to work on the Gateway stages. Columbia has discovered new talent from Gateway's student body. Last season, John Simpson, a clerk at a local department store, enrolled for the courses at Gateway, was observed by Miss Selznick in a small role in *BYE BYE BIRDIE* and was given a contract with Columbia Pictures and the title role in the new *ARCHIE* series on television for Screen Gems, a Columbia subsidiary.

In 1962 Gateway built its present modern playhouse which is considered to be one of the finest summer theatres in America. This year, Gateway's dining rooms have been re-decorated and air-conditioned and once again patrons may enjoy delicious dinners in air-conditioned comfort before and after the Show.

Gateway's patrons may now enjoy a unique experience in attending Broadway plays and musicals, seeing stars of stage and screen, visiting Gateway's 10 acres of theatre activity, seeing the talent farm in action, attending week-end performances at the student Showcase Theatre, and enjoying moderately priced blue plate dinners in the dining rooms.







**MENS FASHIONS**

Quality Merchandise Since 1925  
**HART SCHAFFNER & MARX CLOTHING**  
**EAGLE CLOTHES — BOTANY "500"**  
**STETSON HATS — HATHAWAY SHIRTS**

**mac kanner**

14 East Main Street Patchogue, N. Y.

...Visit Our...  
*New University Shop*  
*"Neat Shoulder"*  
*Clothing*

**STAFF FOR BELLPORT GATEWAY PLAYHOUSE**

Executive Producer ..... Harry C. Pomeran  
 Managing Director ..... David Sheldon  
 Workshop Director ..... Sally Harris  
 Children's Theatre Director ..... Ruth Allan  
 Designer ..... Tony Deeds  
 Stage Manager ..... Dan Robertson  
 Choreographers ..... Lou Richards  
 Music Director ..... Carl Eugster  
 Box Office ..... Daniel H. Brauer  
 Program Director ..... Charles Leslie Harris  
 Supervisor ..... Alyce Antziz  
 Showcase Director ..... Harvey Flaxman  
 Vocal Coach ..... Sydney Rayner  
 Music Associate ..... William Brackman  
 Costume Designer ..... Cynthia Pennell  
 Publicity ..... Armin Osgood  
 Prop Master ..... Harry Lines  
 Apprentice Coordinator ..... Joan Blevins  
 Apprentice Supervisor ..... Arne Gundersen  
 Make-up Consultant ..... Hal Lamb

**1963 TALENT POOL**

Bill Hayes, Barbara Sharrow, Charles Hull, Joseph George, Armin Osgood, Greta Thyssen, Joan Blevins, Ruth Vickers, Arne Gundersen, Don Carleton, Sean Garrison, Lillian Roth, Arnold Stang, Bonnie Jones, Lynda Day, John Simpson, Thelma Davidson, Marian Edwards, Tim Kennedy, Rocky Graziano, Michael Regan, John Dupuy, Barbara Nichols.

Talent by special arrangement with William Morris, Frank Cooper, Ashley-Steiner-Famous Artists, Hesseltine-Bookman-Seff, Management Plus, Singer Associates, General Artists Corp., and other New York talent agencies.

*Rose Jewelers*

KNOWS SOME  
 SECRETS ABOUT

*Diamonds*



but we'll gladly  
 share them  
 with you

ROSE JEWELERS  
 and  
 THE AMERICAN GEM SOCIETY

The American Gem Society is a selected group of 800 jewelers in the U. S. and Canada, dedicated to the development of trust and confidence in the retail jeweler by the general public and the advancement of scientific education within the jewelry industry so as to eliminate any misrepresentation caused by ignorance of the true nature and value of merchandise offered for sale.

Among the standards for the society, a member:

- a. Must enjoy a reputation for unquestioned integrity in its own community
- b. Must take and pass annual exams on the latest developments in gemology.

Rose Jewelers who are registered jewelers, American Gem Society, stand ready to serve you with professional advice on diamonds and fine jewelry.

*Rose Jewelers*

Patchogue  Riverhead

Registered Jeweler  
 American Gem Society

Exclusive Suffolk Representative  
 for TIFFANY SILVER

**Glass  
 is our  
 Business**

**CLEAR-VIEW  
 PLATE GLASS CO., INC.**

**STORE FRONTS**

Wall & Door Mirrors, Furniture Tops, Window Glass  
 Plate Glass, L.O.F., Thermopane, Picture Framing

303 East Main Street  
 PATCHOGUE, N. Y.  
 Tel. G.Rover 5-5858

Angelo L. Juliano, Jr.  
 Al Zelenski

*Richard York*  
 OF PATCHOGUE

Daniel Green

Dr. Posner  
 Roblee

Florsheim

**Shoes**

14-22 SOUTH OCEAN AVENUE  
 PATCHOGUE, L. I., NEW YORK

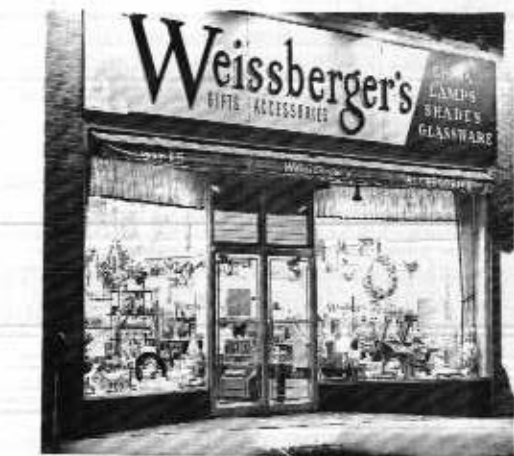
Red Cross Shoes

Cobbies

Buskens

Jumping Jacks

— Summerettes



**GIFTS-RARE or WELL-DONE for--**

- Showers • Weddings • Birthdays
- Anniversaries • Engagements

—and other events—

29 So. Ocean Ave. Patchogue GR 5-4428

— CHILDREN'S ATTRACTIONS—

SAT. JOLLY ROGER,  
 JUNE 15th direct from Broadway

SAT. BOZO the Clown and  
 JUNE 22nd Princess Ticklefeather  
 WPIX Channel 11

WED. JACK and the  
 JULY 3rd BEANSTALK

WED. RUMPLESTILTSKIN  
 JULY 10th

WED. ALICE IN  
 JULY 17th WONDERLAND

WED. THE EMPEROR'S  
 JULY 24th NIGHTINGALE  
 (Ronor Marionettes)



A new exciting Children's Show every  
 Wednesday at 2:00 featuring profes-  
 sional actors and puppets. Watch for  
 announcements



**SOMEBODY UP  
 THERE LIKES YOU**

**WOR HELICOPTER 710**

New York's first helicopter traffic service

**WOR RADIO 710**

# BEST CAR VALUE

## '63 RAMBLER

ACTION — PACKED COMPACT  
In Suffolk at —

## PATCHOGUE RAMBLER

575 East Main St., Patchogue GR 5-3400

## OR JEFFERSON RAMBLER

414 Main St., Port Jefferson HR 3-3636



AMERICAN RAMBLER or  
AMBASSADOR V-8



### ANVIL - BELL FENCES

For Safety — For Lifetime Use  
We Furnish, Deliver and Install

GRover 5-1917

Waverly Ave. Patchogue

### Call Nudo

GRover  
5-1169



### NUDO BROS.

158 Orchard Road, East Patchogue, N. Y.

- Lift Cranes
- Crane Service
- Excavating
- Tree Removal
- Cesspool Pumping
- Pre-cast Cesspools
- Pool Installations
- Dry Wells
- Pipe Line Digging and Installation

### DAVIS PARK FERRY SCHEDULE

Subject to Change Without Notice

Lv. PATCHOGUE Lv. DAVIS PARK

#### Weekdays

10:00 AM 11:00 AM  
3:30 PM 4:20 PM

#### Friday Nights

6:00 PM  
7:35 PM  
9:15 PM

#### Saturday

10:00 AM 12 Noon  
1:15 PM 4:20 PM  
6:15 PM

#### Sundays

10:00 AM 11:00 AM  
12:00 Noon 1:00 PM  
2:15 PM 5:00 PM  
5:40 PM 6:30 PM  
7:10 PM 8:00 PM

GRover 5-1665

Ferries leave from the Sandspit  
at the foot of Brightwood St.

## SWEZEY FUEL CO., INC.

PATCHOGUE, N. Y.

51 RIDER AVENUE  
GR 5-0270

PORT JEFFERSON, N. Y.

BEACH STREET  
HR 3-5500

## HEATING OILS

OIL BURNERS • HEATING SYSTEMS  
INSTALLED AND SERVICED



Suffolk's Only Decorating Dept. Store

## CLEAR-VIEW & FIALA

Incorporated

PAINTS — WALLPAPERS

ARTISTS SUPPLIES — TOOLS & MATERIALS

212 East Main Street

Next to Sears in Patchogue



FULL ASSORTMENT

OF COLORS

PARAGON

PAINTS

Week beginning August 27, 1963

HARRY C. POMERAN & DAVID SHELDON

present

# Take Her, She's Mine

by Phoebe and Henry Ephron

— FEATURING —

## Tim Kennedy & Danna Hansen

with

MICHAEL REGAN HARRIET MASON ARNE GUNDERSEN

ARMIN OSGOOD JOAN McCALL

and Columbia Pictures' JOHN SIMPSON as Emmett  
Television's new "ARCHIE"

Designed by  
TONY DEEDS

Directed by  
HARVEY FLAXMAN

### CAST

in order of appearance

Principal . . . . .	Michael Polednak
Mollie Michaelson . . . . .	Harriet Mason
Frank Michaelson . . . . .	Tim Kennedy
Anne Michaelson . . . . .	Danna Hansen
Liz Michaelson . . . . .	Ellen Strasberg
Emmett . . . . .	John Simpson
Adele McDougall . . . . .	Joan McCall
Sarah Walker . . . . .	Pamela Shaw
Donn Bowdry . . . . .	Arne Gundersen
1st Freshman . . . . .	Norman Young
2nd Freshman . . . . .	Douglas Tepper
Richard Gluck . . . . .	Anthony Lapardo
Alfred Greiffinger . . . . .	Archie Bonyun
Alex Loomis . . . . .	Michael Regan
Mr. Whitmyer . . . . .	Michael Polednak
Linda Lehman . . . . .	Ann Sonkin
Clancy . . . . .	Jeffrey Zeiner
Mr. Hibbetts . . . . .	Armin Osgood





# Gateway's Suggestions for GRACIOUS DINING



## Before and After the Show



### The Better Ole

DANCING SATURDAY NIGHTS Comfortably Air Conditioned

— Delightful Dining — Continental Cuisine —  
Dancing Every Saturday Night

Open After Theatre — Closed Tuesdays

Recommended by Cue — Gourmet — Duncan Mines

South Country Road

Atlantic 6-0568

Brookhaven, N. Y.

### LINDENMERE HOTEL and RESTAURANT

Summer Resort on the Water  
Center Moriches Phone AT 4-0553

LUNCHEON, DINNERS SERVED DAILY

-Cocktails-

Music,  
Dancing Nitely

**RIDGELY'S**  
*Fabulous Steaks*  
WATER MILL, L. I.  
RESERVATIONS RA 6-9699

## The BELLPORT

19 Bellport Lane, Bellport

AT 6-9872

*Enjoy Summer Living!*

Have your favorite cocktail with your favorite food. Congenial staff, Continental cuisine. Fully air conditioned.

LUNCHEON DAILY FROM 11:30, DINNER 5 TO 10 P.M.  
A LA CARTE TO 1 A.M. RESERVATIONS TO 60 PERSONS



## The LAMPLIGHTER



Montauk Hwy., Sayville  
12 MINUTES FROM  
PLAYHOUSE  
Late Supper Menu to 1 A.M.

Reservations: LT 9-5050

-Closed Mondays-

## Tojen's Restaurant

FEATURING DANCING TO  
LIVE MUSIC EVERY SAT. EVE.

*Accommodations for 150*

WEDDING - SPECIAL PARTIES - MEETINGS  
ROUTE 112 GR 5-1444 North Patchogue



## BRONCO CHARLIE'S

ORIGINAL LOG CABIN RESTAURANT

SPECIAL PORTIONS

Specializing in Sauerbraten and Dumplings

FOR CHILDREN

OPEN EVERY DAY 11 A.M. TO 10 P.M.

MONTAUK HIGHWAY

OAKDALE, N. Y.

LT 9-1132



## Lake View Inn

Yaphank, N. Y.

DINNERS — LUNCHEONS

*Italian, French and  
German Cuisine*

OPEN DAILY Yaphank 4-8989

IRON  
HORSE  
RESTAURANT



Closed Mondays

COCKTAILS

*Italian Specialties  
and American Favorites*

108 SO. COUNTRY RD.

BELLPORT

AT 6-9894

"A Good Place to Eat —  
Where Old Friends Meet"



On Montauk Highway E. Patchogue

## Donato's

RESTAURANT

ITALIAN AND AMERICAN CUISINE  
PIZZA PIES OUR SPECIALTY  
SOUTH COUNTRY ROAD  
EAST PATCHOGUE, L. I. N. Y.

ORDERS TO TAKE OUT PHONE GROVER 5-3366

*For late Supper after the Show*  
EASTERN LONG ISLAND'S LOVELIEST RESTAURANT

Luncheons, Dinners Daily *Felice's* Seating 8 to 800 Persons

CATERING TO WEDDINGS — PARTIES — CLUBS

322 West Main Street

PATCHOGUE, N. Y.

GRover 5-1300



ON CONNETQUOT RIVER  
OAKDALE, L.I.

*Bamboo Deck  
Outdoor Dining and  
Dancing Fri., Sat Eves*

Docking Facilities

GEORGE  
RENNER,  
PROP.

Open All Year LT 9-0248

## ROBERTS STEAK HOUSE

LT 9-9892



Montauk Highway

OAKDALE, N. Y.

*Charcoal Broiled Steaks  
Seafood Specialties*

LUNCH'S NOON TO 3 DINNERS 5 to 10 P.M.

Closed Mondays

YOUR HOST JOE VALENTI

## Deli-King

*Suffolk County's Finest  
KOSHER DELICATESSEN  
RESTAURANT*

Catering our Specialty  
85 W. Main St., Patchogue

GR 5-3364

## Patchogue Motel AND COUNTRY CLUB

43 unit *Show Place of Long Island*  
Free 21" TV & Games Air Conditioned  
Telephones & Kitchenettes Swim Pool

RESTAURANT & COCKTAIL LOUNGE

EMERSON 3-6880

SUNRISE HIGHWAY

# Take Her, She's Mine

The action of the play takes place in Southern California and New England.

THE TIME: The present

ACT ONE

A year ago

(INTERMISSION)

ACT TWO

Now

## PRODUCTION STAFF

Costumes designed by ..... Cynthia Pennell  
 Furniture ..... Michael Polednak  
 Properties: ..... Penny Praigg, Pam Ittleson, Ann Sonkin  
 Stage Technician and Lighting ..... Norman Young  
 Construction ..... Anthony Lapardo  
 Costume Construction ..... Frances Feinberg, Lucille Cedar  
 Production Crew: ..... Pam Kent, Janette Gautier,  
 Rhona Epstein, Bernard Cedar, Jean Neff  
 Lighting Operator ..... Louis Vaccaro, Jr.

## NEXT ATTRACTIONS:

The all-time family Comedy Hit &  
 Broadway's longest running Play -  
 SEPT. 3 thru SEPT. 8

The riotous Comedy Hit  
 Sept. 10 thru Sept. 15

*Life With Father*

*Come Blow Your Horn*

Naughty - Funny & Delightful  
 Sept. 17 thru Sept. 22

*The Moon is Blue*

Are you on our mailing list? Be sure to sign the Guest Book in the lobby. Your comments are always welcome. Free Postcards are available at the Box Office.

ROOFING  
 SIDING  
 INSULATION  
 ALUMINUM  
 WINDOWS  
 AWNINGS

# TIGHT ROOFS

# McRAE BROS

East Hampton 4-0212

Southampton i-0113

GRover 5-4200  
 HAmilton 3-2746  
 PArk 7-2859  
 MOhawk 9-1344



Atlantic 6-1222

Enchanted Mirror Beauty Salon  
 7 BELLPORT LANE ★ BELLPORT, NEW YORK  
 Hair Fashions by Robert

Sayville

CHARLES P. DICKERSON

Real Estate — Insurance  
 Homes — Waterfronts — Farms  
 — Business Properties —

31 Main Street

SAyville 4-0164



Shoes for all the Family  
 FIT AND COMFORT GUARANTEED  
**ARCH PRESERVER SHOE STORE**  
 52 E. Main St., Patchogue GR 5-0447

*Norman King & Son*

★ KINGSON FURNITURE WAREHOUSE  
 Furniture - Bedding - Slip Covers - Upholstery  
 Early American, Colonial, Provincial, Modern  
 Medford Ave. (Rte. 112), No. Patchogue  
 Open Mon., Thurs., Fri. Eve. GR 5-1042

VOCAL PROBLEMS CORRECTED

MICHAEL SIGNORELLI

Former Leading Tenor, Chicago Opera Company  
 STUDIOS IN BAYPORT, L.I. and MANHATTAN  
 Write for Free Booklet  
 "WHAT MADE THE GOLDEN AGE SINGERS SO GREAT"  
 P O BOX 848 BAYPORT, LONG ISLAND, N.Y.

OFFICE: GR 5-0762

MIRABELLI AGENCY, INC.

The House of Insurance  
 70 WEST MAIN STREET  
 PATCHOGUE, N. Y.

ROY J. WATTS

DOMINICK BOSTINTO

**The Sou'wester Book Shop**



THE SOU'WESTER  
 BOOKS AND GIFTS

- PAPERBACKS, CHILDREN'S BOOKS
- LARGE SELECTION OF PLAYS
- CARDS, GIFTS, MAPS

Main St. Bellport AT 6-0777

**B**oarding Dogs and Cats YA 4-3546

**L**ocated at Dogwood Glen

**A**ttention to Special Diets

**C**lipping and Plucking all Breeds

**K**lean | **BLACK EDGE KENNELS**

Rocky Point Road - Middle Island

"Where Thousands have Saved Millions Since 1896"



*The* **UNION SAVINGS BANK**  
 OF PATCHOGUE, N. Y.

62 South Ocean Avenue. Only a Block from Main St. GR 5-5800

Banking Services 9 A.M. to 6 P.M. Daily Except Sat., Fri. Eve. 6:30 to 8 P.M. Member FDIC

"OUR ADVERTISERS REPRESENT RELIABILITY. PATRONIZE THEM."



# THE PEOPLES NATIONAL BANK OF PATCHOGUE



DRIVE-IN DEPOSIT WINDOW — EASY PARKING

**CORDIALLY INVITES  
YOUR ACCOUNT**  
Member of the Federal  
Deposit Insurance Corporation  
**115 EAST MAIN STREET  
PATCHOGUE N. Y.**

Mid-Island Office —Route 25, Selden, N. Y.  
Centereach Office —Route 25  
North Patchogue Office — 100 East Sunrise Highway

*Gateway Playhouse*

*Children's  
Attractions*

**EVERY WEDNESDAY  
AT 2 P.M.**

General Admission \$1.25



*DIAMOND SPECIALISTS  
Since 1899*

*Fine Jewelry*  
**Kallers Jewelers**



30 East Main St. Patchogue GR 5-2002

*"The Coolest Way to Go to the Beach"*

**DAVIS PARK FERRY CO.**  
SANDSPIT PHONE  
PATCHOGUE GR 5-1665

Frequent Trips to and from the Beach  
on Regular Schedule

RELAX IN COOL COMFORT

**GOING ABROAD THIS YEAR?**  
—New Service—

**"TIP PACKS FOR TRAVELERS"**  
\$10 in foreign currency for those  
first-day tips, taxis, tiny expenses  
Available for 8 European countries  
\$10.50 each

Member **UNION SAVINGS BANK**  
F.D.I.C. 82 So. Ocean Ave. Patchogue



**Patchogue** GRover 5-4389

**Power Tool Co.**

Rentals - Sales - Repairs

Floor Sanders - Power Mowers  
All Power Tools

298 MEDFORD AVE.

PATCHOGUE, N. Y.



Emergency Phone

AT 6-0079 AT 6-8588

*"Reliability Since 1900"*



IRVING BELLER, part of the successful team known as Sybelle Carpets, has just completed a wonderful move to a bigger show of fine quality floor covering at 464 East Main Street, in Patchogue. Irv has a well-rounded background in the floor covering business and always

gives his best in every appearance. He is married and the father of five children. When looking for the best see Irv at Sybelle Carpet, directly opposite Safeway in Patchogue. ATlantic 9-1112.



JERRY BELLER is the other half of the Sybelle Carpet team of fine performers. He resides in Patchogue with his wife and three children. Jerry has had many years of floor covering experience, the reason so many people give rave notices on his excellent ability to offer good service and quality plus the best price. Also in the cast of Sybelle Carpet is Al Kattau, Harold Overton, Paul Soldano, Leon Beller, Al Nesi, Elizabeth Skarka and Stan Beller of the Commack store. See them soon at Sybelle Carpet's new store, 464 East Main Street in Patchogue. ATlantic 9-1112.

# STANLEY

Bedding and

*"Suffolk's Oldest and Nos."*

**FOR MODERN TASTES**

**INSTANT  
CREDIT**



GR 5-2531

**LIMITED BUDGETS**

**DINNER AND  
THE THEATRE**

for as little as  
**\$5.00 per person**



**ENJOY**

**CAROLINA-CRISP CHICKEN  
and OTHER BLUE PLATE DINNERS**

**EXCITING DESSERTS  
in**

**Gateway's**

**NEW AIR-CONDITIONED  
DINING ROOMS**

**BEFORE AND AFTER THE SHOW**

**GATEWAY**

— 1963 SCHEDULE —

BILL HAYES in SUNDAY IN NEW YORK	JUNE 11 to 16th
GRETA THYSSEN in A SHOT IN THE DARK	JUNE 18 to 23rd
ARNOLD STANG in BLOOD, SWEAT, & STANLEY POOLE	JUNE 25 to 30th
BARBARA SHARMER in IRMA LA DOUCE	JULY 2 to 14th
LILLIAN ROTH in TOYS IN THE ATTIC	JULY 16 to 21st
SEAN GARRISON in CARNIVAL	JULY 23 to AUG. 4
THE UNSINKABLE MOLLY BROWN	AUG. 6 to 18th
COME BLOW YOUR HORN	AUG. 20 to 25th

New Plays and Guest Personalities thru  
the end of September.

**Save with safety here**



**MORTGAGE  
LOANS**

**PERSONAL  
LOANS**

**CHECKING  
ACCOUNTS**



**ALL COMMERCIAL SERVICES  
THE PATCHOGUE BANK**

47 W. Main St., Patchogue, GR 5-3020  
Coram Office, 179 Middle Country Rd.  
East Patchogue, 468 East Main Street

Member F.D.I.C.

**4% Paid on  
Savings Accounts  
on deposit 1 yr. or more**

"OUR ADVERTISERS REPRESENT RELIABILITY — PATRONIZE THEM"

"OUR ADVERTISERS REPRESENT RELIABILITY — PATRONIZE THEM"



**Capezio**  
THE DANCERS' COBBLER SINCE 1887

FALKOFF 66 E. Main St.  
PATCHOGUE GR5-1240

**Chain Link,  
Cypress and  
Cedar Fences  
Mid-Island Fence  
Co., Inc.**

RESIDENTIAL — INDUSTRIAL  
**GR 5-5715**

ROUTE 112 MEDFORD, L. I., N. Y.

Free Estimates Supplied

**PLAIN and FANCY** casual clothes  
BELLPORT, N.Y.

**DANCE SHOES**

**STRIDE RITE**  
SHOES FOR CHILDREN

*Naturalizer*  
SHOES FOR WOMEN

**THE SUN RANCH**

126 Scenic Acres

EASTERN SCHOOL OF HORSEMANSHIP

- Riding Instruction
- Horseback Riding
- Hay Rides
- Pony Rides



**RANCH STORE**  
Riding Apparel  
Tack  
Del Norte Boots

"Everything for Horse and Rider"

**SUN RANCH, INC.**  
ROUTE 25 CORAM, N. Y.

**FRANK FIALA**  
**COUNTRY PAINTS**  
and COUNTRY ART GALLERY

Beauty by the Brushful with  
Colorizer Paints in 1344 Colors  
Wallpaper and Art Supplies

83 So. Ocean Ave. Patchogue GR 5-5527



The Adult Stations — "For The Young At Heart"

**WPAC** - AM 1580 KC **WPAC** - FM 106.1 MC  
PATCHOGUE, N.Y.

**WAPC** AM 1570 KC - **WAPC** - FM 103.9 MC  
RIVERHEAD, N.Y.

Long Island's Leading Radio Stations — Powerful 10,000 Watts

SINCE 1886

SERVING SOUTHERN SUFFOLK with

DEPENDABLE, LOW COST POWER FOR PROGRESS

The **Patchogue Electric Light Co.**

448 E. Main St., Patchogue, N. Y. • GRover 5-3000



**GLOVER**

BOTTLED GAS CO.

Medford Road  
North Patchogue  
GROVER 5-3120

Largest Service Plant in Central Suffolk  
All Gas Appliances at Discount Prices  
Radio Dispatched Deliveries  
Fully Trained Mechanics



**JOHN J. ROE & SON**

INSURANCE — REAL ESTATE  
Since 1898

Main Office  
125 East Main St.  
PATCHOGUE, N. Y.  
GRover 5-4000

Branch Office  
118 Main Street  
BELLPORT, N. Y.  
AT 6-1000



Over A Half Century of Service to Patchogue and Vicinity

From Suffolk's Top Showplace  
to the Top Showroom at



**SOUTH BAY**  
**ELECTRICAL SUPPLY**

ELECTRICAL SUPPLIES, FIXTURES  
288 Medford Ave., Patchogue  
GRover 5-4260

BELLPORT — AAA

**HAWKINS GARAGE**

Immediate Emergency Repairs  
Towing — Courteous Service

Opposite Post Office  
Irv Terwilliger

AT 6-0185  
Cliff Miller

"Fresh Flowers from our  
Greenhouses to you"



399 Medford Ave. - Patchogue, N. Y. - GR 5-1779



*George's*

**RADIO & TELEVISION**  
RECORDS - PHOTO - HI FI - STEREO  
ANTENNA INSTALLATIONS  
FOR TV SERVICE

53 W. Main  
Patchogue  
GR 5-0834

66 Main St.  
Sayville  
LT 9-3370



**DENNIS MAUD TREE EXPERT CO.**

COMPLETE TREE SERVICE

Diagnosis Without Charge

Pruning — Fertilizing — Tree Removal — Spraying  
Tree Surgery — Tree Moving — Poison Ivy Control



39 South Country Rd. GRover 5-1233 — 2880 Patchogue, L. I.

Long Island's own  
Cents-Savings  
Food Department Stores  
Since 1887

**BOHACK**  
...Where Better Meals Begin