

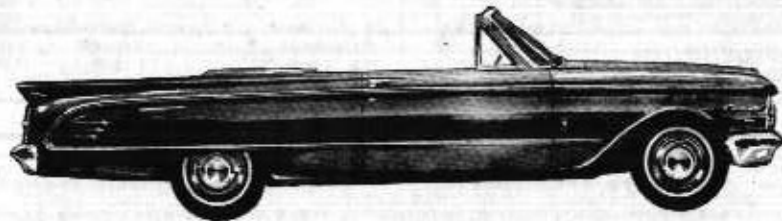


Lincoln Continental

Classic Beauty in a smart new size



MERCURY



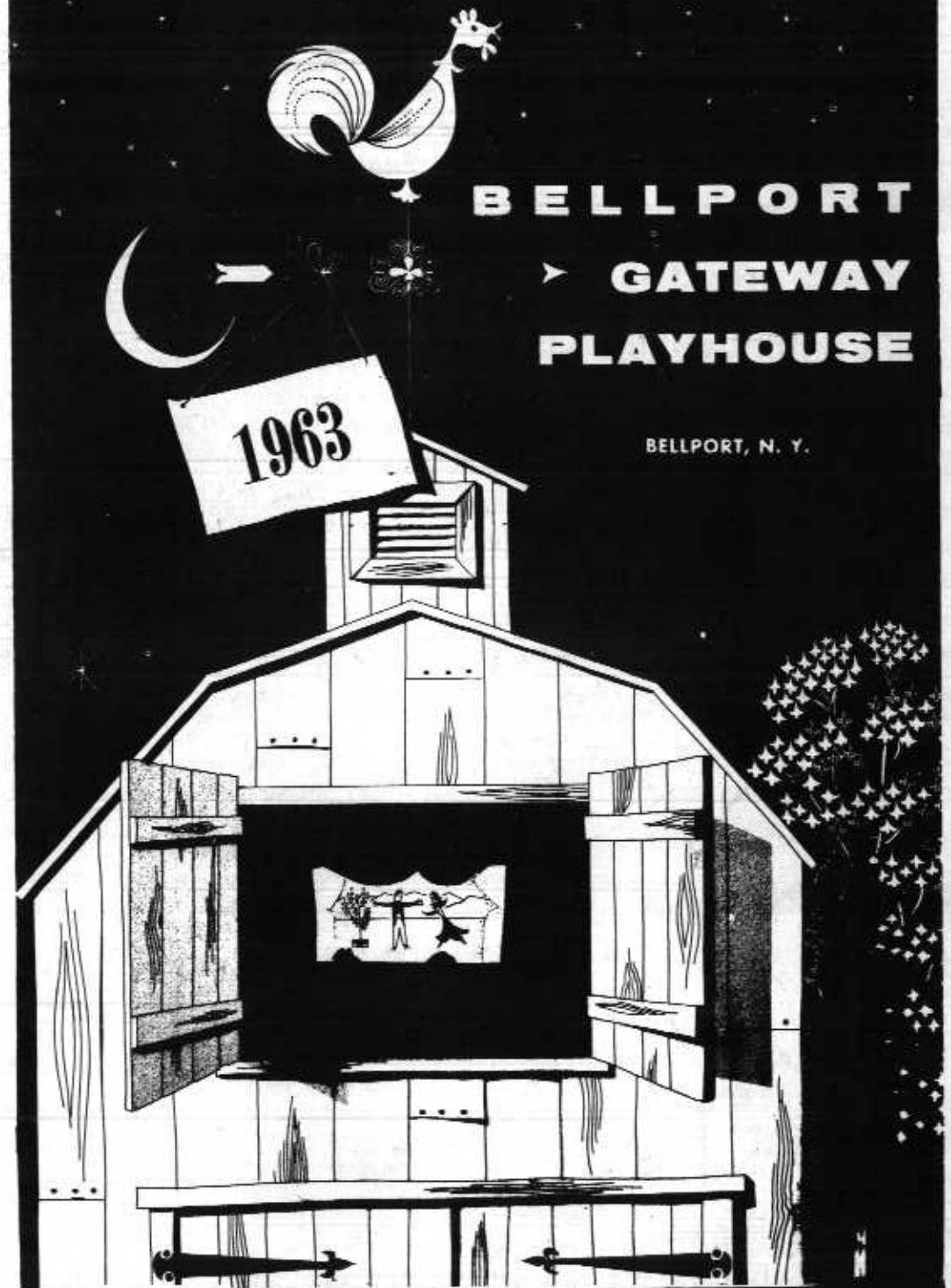
comet

so much luxury and style...so little maintenance

ZEIDLER MOTORS, INC.

ROUTE 112 GROVER 5-2900 MEDFORD, N. Y.

"OVER AN ACRE of PRIME USED CARS TO CHOOSE FROM"



**BELLPORT
GATEWAY
PLAYHOUSE**

BELLPORT, N. Y.

LONG ISLAND'S SUMMER THEATRE FAIR

BROADWAY PLAYS in AIR CONDITIONED COMFORT

EVERYTHING FOR YOUR DREAM HOUSE
FROM LONG ISLAND'S MOST COMPLETE
LUMBER YARD
FINANCING. PLANS, FREE ESTIMATES



For Same Day Delivery

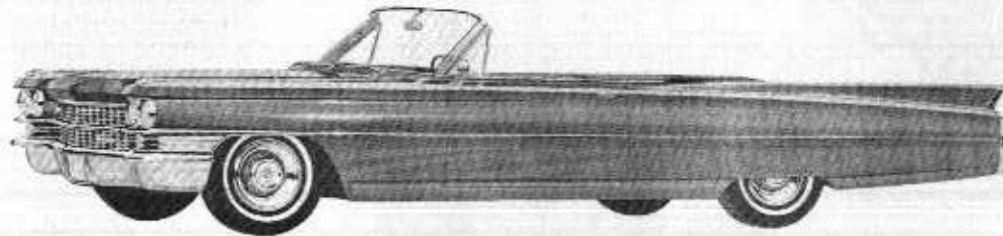
For Same Day Delivery

Telephone GROVER 5-3232

CAN A CADILLAC SURPASS ITS OWN GREAT REPUTATION?

The 1963 Cadillac does just that. In beauty . . . in luxury . . . in performance . . . and in craftsmanship, the new Cadillac creations surpass the famous cars they supersede. Under the hood is a greatly refined engine. It is lighter in weight, quieter and smoother in operation than ever before. And in the way the 1963 Cadillac rides and handles and responds, where, indeed, many believed perfection had been already attained, Cadillac engineers have wrought miracles of improvement.

*Cadillac
Masterwork
of the
Motoring Age*



CADILLAC and OLDSMOBILE
SALES, SERVICE and PARTS

**BARRIE
BROS. INC.**

318 East Main Street
PATCHOGUE, N. Y.
GROVER 5-1100

Valley NATIONAL BANK

Bellport Office: LONG ISLAND
32 Station Road
BELLPORT, NEW YORK
AT 6-0090

CONVENIENT PARKING — FRIENDLY SERVICE
WHERE YOUR DOLLARS MAKE SENSE



BELLPORT GATEWAY PLAYHOUSE

SOUTH COUNTRY ROAD BELLPORT, L. I., N. Y. BOX OFFICE Atlantic 6-1133

Twenty-one years ago, the present producers of Gateway started the Gateway project in what was then the old Mott barn. The hay lofts were brimming over with hay gathered from the fields on the Gateway farm. From cow and horse stalls, the animals listened while a group of your ambitious actor-directors rehearsed lines for their first play. Fearless and determined, the first Gateway company of performers chose Shakespeare as its first public effort. The stage setting was in "theatre-in-the-round" and the general admission was \$1.00. Barn swallows watched from their nests in the rafters.

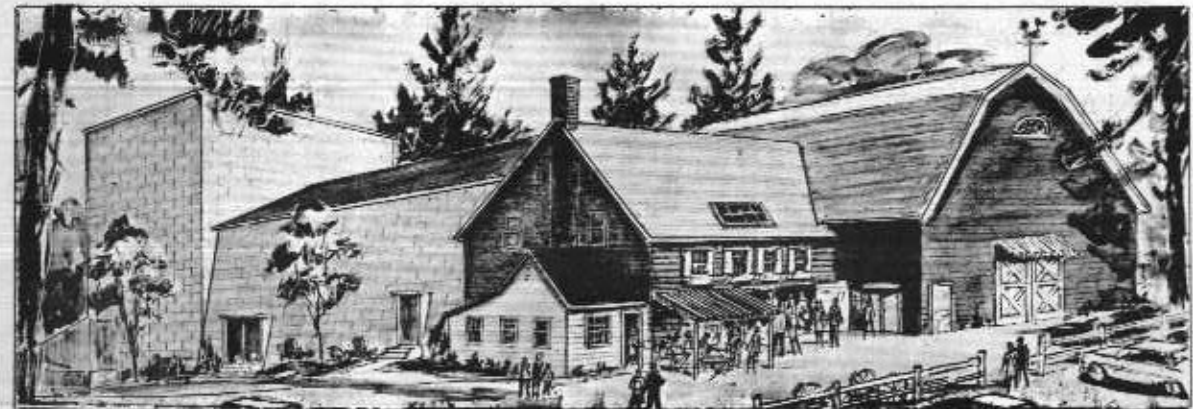
In 1949 the theatre was remodeled and established as a summer stock company. Little by little the hay lofts became balconies, the cow stalls became dressing rooms, and the playhouse grew into one of the most romantic and intimate summer theatres on the East Coast. Many wonderful things have happened for Gateway during this time. A discerning and enthusiastic group of patrons have steadily supported Gateway's efforts and superlative comments have come from the press. Important talent representatives, agents, and producers have shared in the artistic efforts.

A second theatre, the Gateway Showcase Theatre, in the adjoining red barn, functions as an experimental workshop featuring new plays, new talent, and the work of students enrolled at the Gateway Theatre Workshop. The extensive training program offers daily classes in acting, voice, dance, speech, and motion picture technique to 100 young students. A film studio for 16mm camera work has been completed on the premises and is used for instructional and experimental motion picture work.

Three years ago, Joyce Selznick, Eastern Story and Talent Director for Columbia Pictures, was impressed with the work and physical plant at Gateway and pursued the possibility of training Columbia's new young stars and talent discoveries here. The Gateway-Columbia tie was made official and has resulted in the development of Gateway's talent farm. James Darren, Deborah Walley, Nancy Kovack, and Clay Cole were among the first Columbia actors to work on the Gateway stages. Columbia has discovered new talent from Gateway's student body. Last season, John Simpson, a clerk at a local department store, enrolled for the courses at Gateway, was observed by Miss Selznick in a small role in BYE BYE BIRDIE and was given a contract with Columbia Pictures and the title role in the new ARCHIE series on television for Screen Gems, a Columbia subsidiary.

In 1962 Gateway built its present modern playhouse which is considered to be one of the finest summer theatres in America. This year, Gateway's dining rooms have been redecorated and air-conditioned and once again patrons may enjoy delicious dinners in air-conditioned comfort before and after the Show.

Gateway's patrons may now enjoy a unique experience in attending Broadway plays and musicals, seeing stars of stage and screen, visiting Gateway's 10 acres of theatre activity, seeing the talent farm in action, attending week-end performances at the student Showcase Theatre, and enjoying moderately priced blue plate dinners in the dining rooms.





MENS FASHIONS

Quality Merchandise Since 1925
HART SCHAFFNER & MARK CLOTHING
 EAGLE CLOTHES — BOTANY "500"
 STETSON HATS — HATHAWAY SHIRTS

mac kanner

14 East Main Street Patchogue, N. Y.

...Visit Our...
New University Shop
 "Neat Shoulder"
 Clothing

STAFF FOR BELLPORT GATEWAY PLAYHOUSE

Executive Producer Harry C. Pomeran
 Managing Director David Sheldon
 Workshop Director Sally Harris
 Children's Theatre Director Ruth Allan
 Designer Tony Deeds
 Stage Manager Dan Robertson
 Choreographers Lou Richards
 Music Director Carl Eugster
 Box Office Daniel H. Brauer
 Program Director Charles Leslie Harris
 Supervisor Alyce Antziz
 Showcase Director Harvey Flaxman
 Vocal Coach Sydney Rayner
 Music Associate William Brackman
 Costume Designer Cynthia Pennell
 Publicity Armin Osgood
 Prop Master Harry Lines
 Apprentice Coordinator Joan Blevins
 Apprentice Supervisor Arne Gundersen
 Make-up Consultant Hal Lamb

1963 TALENT POOL

Bill Hayes, Barbara Sharrow, Charles Hull, Joseph George, Armin Osgood, Greta Thyssen, Joan Blevins, Ruth Vickers, Arne Gundersen, Don Carleton, Sean Garrison, Lillian Roth, Arnold Stang, Bonnie Jones, Lynda Day, John Simpson, Thelma Davidson, Marian Edwards, Tim Kennedy, Rocky Graziano, Michael Regan, John Dupuy, Barbara Nichols.

Talent by special arrangement with William Morris, Frank Cooper, Ashley-Steiner-Famous Artists, Hesseltine-Bookman-Seff, Management Plus, Singer Associates, General Artists Corp., and other New York talent agencies.

Rose Jewelers

KNOWS SOME
 SECRETS ABOUT

Diamonds



but we'll gladly
 share them
 with you

ROSE JEWELERS
 and
 THE AMERICAN GEM SOCIETY

The American Gem Society is a selected group of 800 jewelers in the U. S. and Canada, dedicated to the development of trust and confidence in the retail jeweler by the general public and the advancement of scientific education within the jewelry industry so as to eliminate any misrepresentation caused by ignorance of the true nature and value of merchandise offered for sale.

Among the standards for the society, a member:

- Must enjoy a reputation for unquestioned integrity in its own community
- Must take and pass annual exams on the latest developments in gemology.

Rose Jewelers who are registered jewelers, American Gem Society, stand ready to serve you with professional advice on diamonds and fine jewelry.

Rose Jewelers

Patchogue  Riverhead

Registered Jeweler
 American Gem Society

Exclusive Suffolk Representative
 for TIFFANY SILVER



GIFTS-RARE or WELL-DONE for--

- Showers • Weddings • Birthdays
- Anniversaries • Engagements

-and other events-

29 So. Ocean Ave. Patchogue GR 5-4428

— CHILDREN'S ATTRACTIONS—

SAT. JOLLY ROGER,
 JUNE 15th direct from Broadway

SAT. BOZO the Clown and
 JUNE 22nd Princess Ticklefeather
 WPIX Channel 11

WED. JACK and the
 JULY 3rd BEANSTALK

WED. RUMPLESTILTSKIN
 JULY 10th

WED. ALICE IN
 JULY 17th WONDERLAND

WED. THE EMPEROR'S
 JULY 24th NIGHTINGALE
 (Ronor Marionettes)



A new exciting Children's Show every Wednesday at 2:00 featuring professional actors and puppets. Watch for announcements



**SOMEBODY UP
 THERE LIKES YOU**

WOR HELICOPTER 710

New York's first helicopter traffic service

WOR RADIO 710

"OUR ADVERTISERS REPRESENT RELIABILITY — PATRONIZE THEM"

Glass
 is our
 Business

**CLEAR-VIEW
 PLATE GLASS CO., INC.**

STORE FRONTS

Wall & Door Mirrors, Furniture Tops, Window Glass
 Plate Glass, L.O.F., Thermopane, Picture Framing

303 East Main Street
 PATCHOGUE, N. Y.

Angelo L. Juliano, Jr.
 Al Zelenski

Tel. GOver 5-5858

Richard York
 OF PATCHOGUE

Daniel Green

Dr. Posner

Roblee
 Florsheim

Shoes

14-22 SOUTH OCEAN AVENUE
 PATCHOGUE, L. I., NEW YORK

Red Cross Shoes

Cobbies

Buskers

Jumping Jacks

— Summerettes

"OUR ADVERTISERS REPRESENT RELIABILITY — PATRONIZE THEM"

BEST CAR VALUE

'63 RAMBLER

ACTION — PACKED COMPACT
In Suffolk at —

PATCHOGUE RAMBLER

575 East Main St., Patchogue GR 5-3400

OR JEFFERSON RAMBLER

414 Main St., Port Jefferson HR 3-3636



AMERICAN RAMBLER or
AMBASSADOR V-8



ANVIL - BELL FENCES

For Safety — For Lifetime Use
We Furnish, Deliver and Install

GRover 5-1917

Waverly Ave. Patchogue

Call Nudo

GRover
5-1169



NUDO BROS.

158 Orchard Road, East Patchogue, N. Y.

- Lift Cranes
- Crane Service
- Excavating
- Tree Removal
- Cesspool Pumping
- Pre-cast Cesspools
- Pool Installations
- Dry Wells
- Pipe Line Digging and Installation

DAVIS PARK FERRY SCHEDULE

Subject to Change Without Notice

Lv. PATCHOGUE Lv. DAVIS PARK

Weekdays

10:00 AM 11:00 AM
3:30 PM 4:20 PM

Friday Nights

6:00 PM
7:35 PM
9:15 PM

Saturday

10:00 AM 12 Noon
1:15 PM 4:20 PM
6:15 PM

Sundays

10:00 AM 11:00 AM
12:00 Noon 1:00 PM
2:15 PM 5:00 PM
5:40 PM 6:30 PM
7:10 PM 8:00 PM

GRover 5-1665

Ferries leave from the Sandspit
at the foot of Brightwood St.

SWEZEY FUEL CO., INC.

PATCHOGUE, N. Y.

51 RIDER AVENUE

GR 5-0270

PORT JEFFERSON, N. Y.

BEACH STREET

HR 3-5500

HEATING OILS

OIL BURNERS • HEATING SYSTEMS
INSTALLED AND SERVICED



'Suffolk's Only Decorating Dept. Store

CLEAR-VIEW & FIALA

Incorporated

PAINTS — WALLPAPERS

ARTISTS SUPPLIES — TOOLS & MATERIALS

212 East Main Street

Next to Sears in Patchogue



FULL ASSORTMENT

OF COLORS

PARAGON

PAINTS

WEEK BEGINNING AUGUST 6th, 1963

HARRY C. POMERAN & DAVID SHELDON

present

SEAN GARRISON

IN

'THE UNSINKABLE MOLLY BROWN'

Lyrics and Music by
MEREDITH WILLSON

Book by
RICHARD MORRIS

featuring

JOAN McCALL

AS MOLLY BROWN

WITH

MICHAEL REGAN

THELMA DAVIDSON

TIM KENNEDY

Designed by
TONY DEEDS

Costumes designed by
CYNTHIA PENNELL

Dance and Staging by
LOU RICHARDS

Musical direction by
WILLIAM BRACKMAN

Directed by

DAVID SHELDON

CAST

in order of appearance

Shamus Tobin	Tim Kennedy
Michael Tobin	Sean O'Dowd
Aloysius Tobin	Archie Bonyun
Patrick Tobin	Richard Harding
Molly Tobin	Joan McCall
Father Flynn	Roy Vogel
Christmas Morgan	Armin Osgood
Charlie	Arne Gundersen
Burt	Tony Lapardo
Silver	Norman Young
Brawling Miners	Hugh McMahon, Charles Repole, Eric Plattor, Michael Polednak, David Hoffman, Paul Dreyfuss, Bernie Cedar
Saloon Girls	Pamela Lee Ittleson, Joy Wener, Ann Sonken Ellyn Harris, Jean Neff
Johnny "Leadville" Brown	Sean Garrison
Mrs. McGlone	Thelma Davidson
Monsignor Ryan	Michael Polednak
Roberts	Jeff Zeiner
Professor Gardella	Sean O'Dowd
Germaine	Steffi Fields
Princess De Long	Grayce Waterson
Prince De Long	Michael Regan
Count Feranti	Arne Gundersen
Jenab-ashros	Paul Dreyfuss
The Grand Dutchess Marie Nicholaiovna	Lucile Cedar
Duchess of Burlingame	Pam Kent
Duke of Burlingame	Hugh McMahon
Malcolm Broderick	Norman Young
Mrs. Wadlington	Harriet Mason
Mr. Wadlington	Michael Polednak
Young Waiter	Roy Vogel
Maitre D'	Anthony Lapardo
Male Passenger	Sean O'Dowd
Mother	Lucile Cedar
Wounded Sailor	Richard Harding



Gateway's Suggestions for GRACIOUS DINING



Before and After the Show



The Better Ole

DANCING SATURDAY NIGHTS Comfortably Air Conditioned

— Delightful Dining — Continental Cuisine —

Dancing Every Saturday Night

Open After Theatre — Closed Tuesdays

Recommended by Cue — Gourmet — Duncan Hines

South Country Road

ATLantic 6-0568

Brookhaven, N. Y.

LINDENMERE HOTEL
and RESTAURANT

Summer Resort on the Water
Center Moriches Phone AT 4-0553

LUNCHEON, DINNERS SERVED DAILY

-Cocktails-

Music,
Dancing Nitely

RIDGELY'S
Fabulous Steaks
WATER MILL, L. I.
RESERVATIONS RA 6-9699



The BELLPORT

19 Bellport Lane, Bellport

AT 6-9872

Enjoy Summer Living!

Have your favorite cocktail with your favorite food. Congenial staff, Continental cuisine. Fully air conditioned.

LUNCHEON DAILY FROM 11:30, DINNER 5 TO 10 P.M.
A LA CARTE TO 1 A.M. RESERVATIONS TO 60 PERSONS



The LAMPLIGHTER

Montauk Hwy., Sayville
12 MINUTES FROM
PLAYHOUSE
Late Supper Menu to 1 A.M.
Reservations: LT 9-5050
-Closed Mondays-

Tojen's Restaurant

FEATURING DANCING TO
LIVE MUSIC EVERY SAT. EVE.

Accommodations for 150

WEDDING - SPECIAL PARTIES - MEETINGS
ROUTE 112 GR 5-1444 North Patchogue



BRONCO CHARLIE'S

ORIGINAL LOG CABIN RESTAURANT

SPECIAL PORTIONS
FOR CHILDREN

Specializing in Sauerbraten and Dumplings

OPEN EVERY DAY 11 A.M. TO 10 P.M.

MONTAUK HIGHWAY

OAKDALE, N. Y.

LT 9-1132



Lake View Inn

Yaphank, N. Y.

DINNERS — LUNCHEONS

*Italian, French and
German Cuisine*

OPEN DAILY Yaphank 4-8989

IRON
HORSE
RESTAURANT



Closed Mondays

COCKTAILS

*Italian Specialties
and American Favorites*

108 SO. COUNTRY RD.

BELLPORT

AT 6-9894

"A Good Place to Eat —
Where Old Friends Meet"



On Montauk Highway E. Patchogue

Donato's RESTAURANT

ITALIAN AND AMERICAN CUISINE
PIZZA PIES OUR SPECIALTY
SOUTH COUNTRY ROAD
EAST PATCHOGUE, L. I. N. Y.

ORDERS TO TAKE OUT PHONE GROVER 5-3366

For late Supper after the Show
EASTERN LONG ISLAND'S  LOVELIEST RESTAURANT

Luncheons, Dinners Daily *Felice's* Seating 8 to 800 Persons

CATERING TO WEDDINGS — PARTIES — CLUBS

322 West Main Street

PATCHOGUE, N. Y.

GRover 5-1300



ON CONNETQUOT RIVER OAKDALE, L. I.

*Bamboo Deck
Outdoor Dining and
Dancing Fri., Sat Eves*

Docking Facilities

Open All Year LT 9-0248

ROBERTS STEAK HOUSE

LT 9-9892

Montauk Highway
OAKDALE, N. Y.

*Charcoal Broiled Steaks
Seafood Specialties*

LUNCH'S NOON TO 3 DINNERS 5 to 10 P.M.

Closed Mondays

YOUR HOST JOB VALENTI

Deli - King

*Suffolk County's Finest
KOSHER DELICATESSEN
RESTAURANT*

Catering our Specialty
85 W. Main St., Patchogue GR 5-3364

Patchogue Motel AND COUNTRY CLUB

43 unit *Show Place of Long Island*
Free 21" TV & Games Air Conditioned
Telephones & Kitchenettes Swim Pool
RESTAURANT & COCKTAIL LOUNGE
EMerson 3-6880 SUNRISE HIGHWAY

THE UNSINKABLE MOLLY BROWN

Singers and Dancers: Laurie Sammeth, Peggy Clattenberg, Carol Forzano, David Hoffman, Ginny Eastwood, Monica Moerbaum, Ellen Strasberg, Elaine Klahr, Linda Robbins, Ronni Schwarz, Lyn Barnett, Janette Gautier, Melody Marzola, Carlene DeVito, Claudia Benedik, Linda Schwarzman, Jill Diamond, Ann Souken, Elyn Harris, Rody Mitchell, Donna Collisimo, Jane Krensky, Bernie Cedar, Daria Robbiano, Richard Harding, Eric Plattor, Hugh McMahon, Grayce Waterson, Pam Kent.

MUSICAL SYNOPSIS OF SCENES

ACT I

- Scene 1: The Tobin shack, Hannibal, Missouri. The turn of the century.
"I Ain't Down Yet" Molly and her Brothers
- Scene 2: The Saddle Rock Saloon, Leadville, Colorado. Weeks later.
"Belly Up to the Bar, Boys" Molly, Christmas and Miners
- Scene 3: The Saloon. Sunday night, three weeks later.
"I've Already started In" Johnny, Christmas and Miners
- Scene 4: Johnny's Log Cabin. A month later.
"I'll Never Say No" Johnny
"My Own Brass Bed" Molly
- Scene 5: Same, three weeks later. "Keep-A-Hoppin" People of Leadville

(INTERMISSION)

ACT II

- Scene 1: The terrace of Mrs. McGlone's Denver Mansion. Six months later.
"Beautiful People of Denver" Molly
"Are You Sure?" Molly, Monsignor, and Guests
- Scene 2: The Browns' Denver Mansion. The evening of their housewarming.
"I Ain't Down Yet" (reprise) Molly and Johnny
- Scene 3: The Browns' Paris Salon. Years later.
"Happy Birthday, Mrs. J. J. Brown" ... Princess DeLong, Prince DeLong and the International Set
"Bon Jour" (The Language Song) ... Molly, Prince DeLong, & International Set
"If I Knew" Johnny

(INTERMISSION)

ACT III

- Scene 1: The Browns' Mansion. An evening months later.
"Chick-a-pen" Molly and Johnny
- Scene 2: The same. 8 p. m. that evening.
- Scene 3: The same. Next morning.
- Scene 4: Saddle Rock. Months later
"Leadville Johnny Brown" Johnny
- Scene 5: Monte Carlo. A club off the Casino. Spring, 1912.
"Are You Sure" (Dance) Monte Carlo Set
"Dolce Far Niente" Prince De Long and Molly
- Scene 6: The mid-Atlantic. Shortly after 2:30 a. m. April 15, 1912.
- Scene 7: The Browns' Denver Mansion. Two weeks later.
- Scene 8: The Rockies - "I Ain't Down Yet" (reprise) Full Company

UNSINKABLE MOLLY BROWN PRODUCTION STAFF

Production Stage Mgr: Arne Gundersen **Lighting:** Norman Young
Furniture: Michael Polednak **Designer of Properties:** Harry Lines
Costume Construction: Lucile Cedar and Frances Fineberg
Vocal Coaching: Melanie & Sydney Rayner **Hair Styling:** Michael Maletta
Production Assistant: Harriet Mason **Prop Crew:** Grayce Waterson, Pam Kent, Claudia Benedik
Light Crew: Jean Neff, Penny Praig

Children's Matinee

PINOCHIO
2:00 Wed. - AUG. 14th

FUN and MAGIC with
Professor Ferrier
2:00 Wed. - AUG. 21st

NEXT - STARTING AUG. 20th
JOHN CARRADINE in **HAMLET**

With an outstanding company of American Shakespearian Actors

STARTING - AUG. 27th

"TAKE HER - SHE'S MINE" - Comedy hit direct from Broadway

ROOFING
- SIDING -
INSULATION
- ALUMINUM
WINDOWS -
AWNINGS

TIGHT ROOFS

McRAE BROS

East Hampton 4-0212

Southampton 1-0113

GRover 5-4200

HAmiton 3-2746

PArk 7-2859

MOhawk 9-1344



ATLantic 6-1222

Enchanted Mirror Beauty Salon
7 BELLPORT LANE ★ BELLPORT, NEW YORK
Hair Fashions by Robert

Sayville

CHARLES P. DICKERSON

Real Estate — Insurance
Homes — Waterfronts — Farms
— Business Properties —

31 Main Street

SAYville 4-0164



Shoes for all the Family
FIT AND COMFORT GUARANTEED
ARCH PRESERVER SHOE STORE
52 E. Main St., Patchogue GR 5-0447

Norman King & Son

★ KINGSON FURNITURE WAREHOUSE
Furniture - Bedding - Slip Covers - Upholstery
Early American, Colonial, Provincial, Modern
Medford Ave. (Rte. 112), No. Patchogue
Open Mon., Thurs., Fri. Eve. GR 5-1042

VOCAL PROBLEMS CORRECTED

MICHAEL SIGMORELLI

Former Leading Tenor, Chicago Opera Company
STUDIOS IN BAYPORT, L.I. and MANHATTAN
Write for Free Booklet

"WHAT MADE THE GOLDEN AGE SINGERS SO GREAT"

P O BOX 848 BAYPORT, LONG ISLAND, N.Y.

OFFICE: GR 5-0762

MIRABELLI AGENCY, INC.

The House of Insurance
70 WEST MAIN STREET
PATCHOGUE, N. Y.

ROY J. WATTS

DOMINICK BOSTINTO

The Sou'wester Book Shop



THE SOU'WESTER
BOOKS AND GIFTS

- PAPERBACKS, CHILDREN'S BOOKS
- LARGE SELECTION OF PLAYS
- CARDS, GIFTS, MAPS

Main St. Bellport AT 6-0777

Boarding Dogs and Cats YA 4-3546

Located at Dogwood Glen

Attention to Special Diets

Clipping and Plucking all Breeds

Klean BLACK EDGE KENNELS

Rocky Point Road - Middle Island

"Where Thousands have Saved Millions Since 1896"



The UNION SAVINGS BANK
OF PATCHOGUE, N. Y.

62 South Ocean Avenue. Only a Block from Main St. GR 5-5800

Banking Services 9 A.M. to 6 P.M. Daily Except Sat., Fri. Eve. 6:30 to 8 P.M. Member FDIC

THE PEOPLES NATIONAL BANK OF PATCHOGUE



DRIVE-IN DEPOSIT WINDOW — EASY PARKING

**CORDIALLY INVITES
YOUR ACCOUNT**
Member of the Federal
Deposit Insurance Corporation
115 EAST MAIN STREET
PATCHOGUE N. Y.

Mid-Island Office —Route 25, Selden, N. Y.
Centereach Office —Route 25
North Patchogue Office — 100 East Sunrise Highway

Gateway Playhouse

Children's
Attractions

EVERY WEDNESDAY
AT 2 P.M.

General Admission \$1.25



DIAMOND SPECIALISTS
Since 1899

Fine Jewelry
Kallers Jewelers



30 East Main St. Patchogue GR 5-2002

"The Coolest Way to Go to the Beach"

DAVIS PARK FERRY CO.
SANDSPIT PHONE
PATCHOGUE GR 5-1665

Frequent Trips to and from the Beach
on Regular Schedule

RELAX IN COOL COMFORT

GOING ABROAD THIS YEAR?

—New Service—

"TIP PACKS FOR TRAVELERS"

\$10 in foreign currency for those
first-day tips, taxis, tiny expenses
Available for 8 European countries
\$10.50 each

Member UNION SAVINGS BANK
F.D.I.C. 62 So. Ocean Ave. Patchogue



Patchogue GRover 5-4389

Power Tool Co.

Rentals - Sales - Repairs

Floor Sanders - Power Mowers
All Power Tools

298 MEDFORD AVE.

PATCHOGUE, N. Y.



Emergency Phone

AT 6-0079 AT 6-8588

"Reliability Since 1900"



IRVING BELLER, part of the successful team known as Sybelle Carpets, has just completed a wonderful move to a bigger show of fine quality floor covering at 464 East Main Street, in Patchogue. Irv has a well-rounded background in the floor covering business and always

gives his best in every appearance. He is married and the father of five children. When looking for the best see Irv at Sybelle Carpet, directly opposite Safeway in Patchogue. Atlantic 9-1112.



JERRY BELLER is the other half of the Sybelle Carpet team of fine performers. He resides in Patchogue with his wife and three children. Jerry has had many years of floor covering experience, the reason so many people give rave notices on his excellent ability to offer good

service and quality plus the best price. Also in the cast of Sybelle Carpet is Al Kattau, Harold Overton, Paul Soldano, Leon Beller, Al Nesi, Elizabeth Skarka and Stan Beller of the Commack store. See them soon at Sybelle Carpet's new store, 464 East Main Street in Patchogue. Atlantic 9-1112.

STANLEY'S

44 East Main St.
Patchogue, N.Y.

Open MON. THURS. &
FRI. NITES TILL 9

BEDDING AND FURNITURE Co.

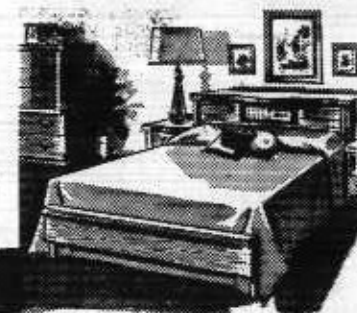
"Suffolk's Oldest and Most Reliable"

FOR MODERN TASTES

INSTANT
CREDIT

LIMITED BUDGETS

GR 5-2531



DINNER AND
THE THEATRE

for as little as
\$5.00 per person



ENJOY

CAROLINA-CRISP CHICKEN
and OTHER BLUE PLATE DINNERS

EXCITING DESSERTS
in

Gateway's

NEW AIR-CONDITIONED
DINING ROOMS

BEFORE AND AFTER THE SHOW

GATEWAY

— 1963 SCHEDULE —

BILL HAYES in SUNDAY IN NEW YORK	JUNE 11 to 16th
GRETA THYSEN in A SHOT IN THE DARK	JUNE 18 to 23rd
ARNOLD STANG in BLOOD, SWEAT, & STANLEY POOLE	JUNE 25 to 30th
BARBARA SHARMER in IRMA LA DOUCE	JULY 2 to 14th
LILLIAN ROTH in TOYS IN THE ATTIC	JULY 16 to 21st
SEAN GARRISON in CARNIVAL	JULY 23 to AUG. 4
THE UNSINKABLE MOLLY BROWN	AUG. 6 to 18th
COME BLOW YOUR HORN	AUG. 20 to 25th

New Plays and Guest Personalities thru
the end of September.

Save with safety here

ALL COMMERCIAL BANK SERVICES
THE PATCHOGUE BANK

47 W. Main St., Patchogue, GR 5-3020
Coram Office, 179 Middle Country Rd.
East Patchogue, 468 East Main Street

Member F.D.I.C.

MORTGAGE
LOANS

PERSONAL
LOANS

CHECKING
ACCOUNTS

4% Paid on
Savings Accounts
on deposit 1 yr. or more

"OUR ADVERTISERS REPRESENT RELIABILITY — PATRONIZE THEM"

Capezio
 THE DANCERS COBBLER SINCE 1887
 FALKOFF 66 E. Main St.
 PATCHOGUE GR5-1240



DANCE SHOES
STRIDE RITE
 SHOES FOR CHILDREN
Naturalizer
 SHOES FOR WOMEN

**Chain Link,
 Cypress and
 Cedar Fences**
**Mid-Island Fence
 Co., Inc.**
 RESIDENTIAL — INDUSTRIAL
GR 5-5715
 ROUTE 112 MEDFORD, L. I., N. Y.
Free Estimates Supplied

THE SUN RANCH
 126 Scenic
 Acres
 EASTERN SCHOOL
 OF HORSEMANSHIP
 • Riding Instruction
 • Horseback Riding
 • Hay Rides
 • Pony Rides
RANCH STORE
 Riding Apparel
 Tack
 Del Norte Boots
 "Happy Riding"
 "Everything for Horse and Rider"
SUN RANCH, INC.
 ROUTE 25 CORAM, N. Y.



PLAIN and FANCY
 casual clothes
 BELLPORT, N.Y.

**FRANK FIALA
 COUNTRY PAINTS**
 and COUNTRY ART GALLERY
 Beauty by the Brushful with
 Colorizer Paints in 1344 Colors
 Wallpaper and Art Supplies
 83 So. Ocean Ave. Patchogue GR 5-5527



The Adult Stations — "For The Young At Heart"
WPAC - AM 1580 KC WPAC - FM 106.1 MC
 PATCHOGUE, N.Y.
WAPC - AM 1570 KC - WAPC - FM 103.9 MC
 RIVERHEAD, N.Y.
 Long Island's Leading Radio Stations — Powerful 10,000 Watts
 SINCE 1886



SERVING SOUTHERN SUFFOLK with
 DEPENDABLE, LOW COST POWER FOR PROGRESS
 The **Patchogue Electric Light Co.**
 448 E. Main St., Patchogue, N.Y. • GRover 5-3000

GLOVER Medford Road
 North Patchogue
BOTTLED GAS CO. GROVER 5-3120

Largest Service Plant in Central Suffolk
 All Gas Appliances at Discount Prices
 Radio Dispatched Deliveries
 Fully Trained Mechanics



JOHN J. ROE & SON

INSURANCE — REAL ESTATE
 Since 1898



Main Office
 125 East Main St.
 PATCHOGUE, N. Y.
 GRover 5-4000

Branch Office
 118 Main Street
 BELLPORT, N. Y.
 AT 6-1000



Over A Half Century of Service to Patchogue and Vicinity

*From Suffolk's Top Showplace
 to the Top Showroom at*



**SOUTH BAY
 ELECTRICAL SUPPLY**

ELECTRICAL SUPPLIES, FIXTURES
 288 Medford Ave., Patchogue
 GRover 5-4260

BELLPORT — AAA

HAWKINS GARAGE

Immediate Emergency Repairs
 Towing — Courteous Service

Opposite Post Office
 Irv Terwilliger

AT 6-0185
 Cliff Miller

*"Fresh Flowers from our
 Greenhouses to you"*



399 Medford Ave. • Patchogue, N. Y. • GR 5-1779



George's

RADIO & TELEVISION
 RECORDS • PHOTO • HI FI • STEREO
 ANTENNA INSTALLATIONS
 FOR TV SERVICE

53 W. Main
 Patchogue
 GR 5-0834

66 Main St.
 Sayville
 LT 9-3370



DENNIS MAUD TREE EXPERT CO.

COMPLETE TREE SERVICE

Diagnosis Without Charge

Pruning — Fertilizing — Tree Removal — Spraying
 Tree Surgery — Tree Moving — Poison Ivy Control

39 South Country Rd. GRover 5-1233 — 2880 Patchogue, L. I.

Long Island's own
 Cents-Savings
 Food Department Stores
 Since 1887

BOHACK
 ...Where Better Meals Begin