

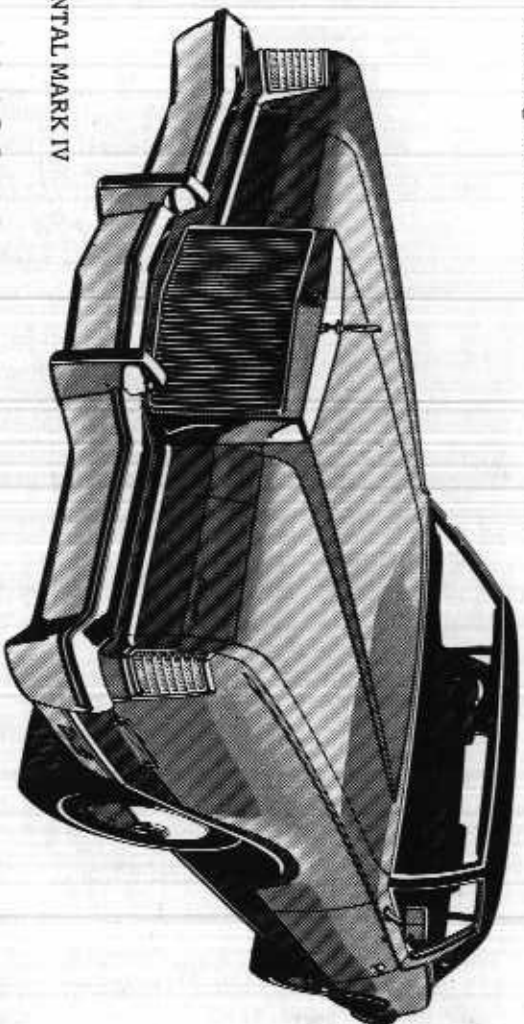
SUPERSTAR

GATEWAY PLAYHOUSE PLAYBILL 1975



Judge Your Car By Our Car!

*Rarely has so much personal luxury
and comfort been combined in such
a splendidly rewarding automobile!*



CONTINENTAL MARK IV

LINCOLN
CONTINENTAL

ZEIDLER MOTORS, INC.

ROUTE 112

GREYER 5-2900

MEDFORD, N.Y.

"OVER AN ACRE of PRIME USED CARS TO CHOOSE FROM"



Member of The Bank of New York Company, Inc.

OFFICES SERVING SUFFOLK, NASSAU & QUEENS

Bellport Center Moriches

West Sayville - Setauket - Ronkonkoma

Member Federal Deposit Insurance Corporation

Seville
BY CADILLAC

Seville is about 25 inches shorter and several hundred pounds lighter than full-size U.S. luxury cars for maneuverability and ease of parking. Yet, it has about the same overall height for interior roominess and comfort.



You'll do BETTER At ...
Barrie Bros.

AUTHORIZED CADILLAC - OLDSMOBILE DEALER
318 EAST MAIN ST., PATCHOGUE - 475-1100

*Cadillac's
International
Sized Car*



-Closed Tuesdays-

**BRONCO
CHARLIE'S**

ORIGINAL LOG CABIN

"Famous for our Sauerbraten"

Families welcomed always
but especially on Sundays!
We are staffed to serve you.

MONTAUK HIGHWAY

OAKDALE, N.Y.

LT 9-1132

Allan and Allan Arts Ltd.

-presents-

Gateway Playhouse Production

of

CRAIG BROOKS AS JESUS OF NAZARETH

IN



**JESUS CHRIST
SUPERSTAR**

Music by Andrew Lloyd Webber . . . Lyrics by Tim Rice

Originally Produced on Broadway by Robert Stigwood

Original Broadway Production Conceived by Tom O'Horgan

Produced by Special Arrangement with Music Theatre International

**PRODUCER
Ruth Allan**

**DIRECTOR
Bob Durkin**

**Costume Designer
TRUDY BARTLUM**

**Musical Director
STANLEY WIETRZYCHOWSKI**

**Technical Director, Light Designer
GARY RAILEANU**

**Production Stage Manager
DIANE DUNCAN**

**Assistant Choreographer
KATHY SENG**



**ACT IV
TAKES PLACE AT**

Patchogue Floral's Fantasyland

COME
BROWSE

LARGEST EMPORIUM CATERING TO
THE ESTHETIC PROCUROR OF UNUSUAL HOME DECOR
Giftware - Art Crafts - Custom Permanent Arrangements



10 ROBINSON AVE. -Next door to Grant City- EAST PATCHOGUE 475-2059

Try the Warm and Friendly
**Village Post
 Restaurant**
 14 STATION ROAD, BELLPORT (Village)
 234-8000
FEATURING
**Lobster Tails every
 Thursday Evening for Only**
 Your Host **\$5.95**
Pete and Cathy

OPEN FOR LUNCH
 Everyday 11:30 A.M.
 (Except Mon. & Tues.)
BAR ALSO OPEN

since 1898

ROE agency inc.

▲ INSURANCE
 REAL ESTATE ▲

118 Main St., Bellport
 516/296-1000

125 East Main St., Patchogue
 516/475-4000

CAST

(IN ORDER OF THEIR APPEARANCE)

JUDAS ISCARIOT RICHARD McLELLAN
 JESUS OF NAZARETH CRAIG BROOKS
 MARY MAGDALENE SUSAN BASILE
 CAIAPHAS RICHARD PIRODSKY
 ANNAS CARMEN HENRY
 SIMON ZEALOTES ROGER SPEAR
 PONTIOUS PILATE GEORGE BERNHARD
 PETER DALE FURRY
 KING HEROD STANLEY BOJARSKI

APOSTLES:

MATTHEW DOUGLAS ALBERT
 PHILIP GERALD GOSS
 JOHN JAMES BERGWALL
 JAMES ROY FIALKOW
 THOMAS JOHN BARRON
 BARTHOLOMEW..... LARRY HIRSCHBORN
 JAMES..... ROBERT FLERI
 JUDAS (not Iscariot)..... RICK LUCERO
 ANDREW JOHN CHRISTIAN SMITH
 PETER DALE FURRY
 SIMON ZEALOTES..... ROGER SPEAR
 JUDAS ISCARIOT..... RICHARD McLELLAN

PRIESTS:

JOHN BARRON
 ROY FIALKOW
 JAMES BERGWALL

Where Thousands Have Saved Millions



Serving our neighbors since 1896
UNION SAVINGS
BANK OF LONG ISLAND

BRANCHES:

SHIRLEY: 1010 MONTAUK HIGHWAY
CORAM: 356 MIDDLE COUNTRY RD.
SMITH GROVE: 143 ALEXANDER AVE
HUNTINGTON: 155 EAST MAIN ST.

Main Office 62 S. Ocean Ave., Patchogue
654-5700

MEMBER F.D.I.C.



YOUR LOCAL MERCHANT
with NATIONAL CHAIN
BUYING POWER!

**SEE US for all your
HARDWARE NEEDS**

- Hand Tools
- Gifts
- Power Tools
- Housewares
- Plumbing
- Paint
- Electrical
- Baking
- Rod & Gun Shop
- Bath Shop
- Sporting Goods
- Garden Shop

406 East Main St., Patchogue
opp. Plaza Theatre

ROLIC, INC. MANUFACTURERS' RETAIL OUTLET

A COMPLETE LINE OF
BOY and GIRL CLOTHING
FROM SIZE 6 MONTHS TO 16 YEARS
AT
MANUFACTURER TO YOU
LOW, LOW PRICES

LARGE
SELECTION
OF
PIECE GOODS
REMNANTS



GROVER 5-1630

410 EAST MAIN STREET
PATCHOGUE



Pine Grove Inn

"WHERE EATING IS A PLEASURE"

CONTINENTAL and GERMAN CUISINE

Turn south onto Chapel Ave. at the Swan Bakery.
continue south to First Street - East Patchogue.

FOR RESERVATIONS Call Erna or Rainer 475-9843

on the Swan River
Hours from 5 p.m. to 10 p.m. Closed Tuesdays
Sundays: 1 to 10 p.m.

CAST

APOSTLE WOMEN:

KATHY SENG
CANDY DURKIN
PAULA JENNINGS
IVY AUSTIN
ROBYNNE FIELDS
MAGDA deJESUS
MARCIA McCABE
JANE BURLEY
ANNE STOCKTON

ROMAN SOLDIERS:

GARY RAILEANU
ROBERT FLERI

LEPERS:

ROBYNNE FIELDS
JANE BURLEY
MARCIA McCABE
GERALD GOSS
ROY FIALKOW
RICHARD McLELLAN

DANCERS:

KATHY SENG
CANDY DURKIN
PAULA JENNINGS
IVY AUSTIN

A ROCK OPERA IN TWO ACTS

SYNOPSIS OF SCENES

PLACE:

BETHANY, IN AND AROUND JERUSALEM
AND THE GARDEN OF GETHSEMANE.

TIME:

THE LAST SEVEN DAYS IN THE LIFE OF
JESUS OF NAZARETH.

BACKSTAGE PERSONNEL

Properties, Special Props &

Scene Painting-----Rick Lucero

Technicians: John Christian Smith,

Robert Fleri, Rick Lucero, Paul Allan

Stage Dressing: Diane Duncan

Stephen Scheetz, Stanley Bojarski

Costume Assistants: Marie Hilgemann

Marcia Froehlich, Sharon Mentyka

TONY GRANT'S


Rainbow's End

19 Bellport Lane, Bellport
So. of So. Country Rd. - Station Rd.
286-9872

(Formerly The Bellport Hotel) OPEN 11:30 DAILY
SUNDAY AT 1 P.M.


<p>LUNCHEON SPECIALS \$1.95 & up</p> <p>COCKTAIL HOUR Mon. - Thur. 5-6 p.m. Fri. & Sat. 5-9 p.m. All Drinks \$1.00</p> <p>AFTER DINNER you can Dance and be Entertained by TONY GRANT at the ORGAN 9:30 p.m. nightly!</p> <p>SENIOR CITIZENS 10% off Mon. - Sat. (\$2.00 min.)</p>	<p>SEAFOOD STEAKS</p> <p>ITALIAN AMERICAN SPECIALITIES</p> <p>***** Dancing & Entertainment Nightly ● FRI. & SAT. Starring: The Fabulous "Sundowners" Music Starts 9:30 p.m. Nightly Open till 4 a.m. *****</p> <p>BRING THIS AD IN AFTER THE SHOW AND GET THE SECOND DRINK FREE!</p>	
---------------------------------------------------------------------------------------------------------------------------------------------------------------------------------------------------------------------------------------------------------------------------------------------------------------------------------------------------------------	------------------------------------------------------------------------------------------------------------------------------------------------------------------------------------------------------------------------------------------------------------------------------------------------------------------------------------------------------------	--

COMPLIMENTS OF:



BEACON FEDERAL SAVINGS
AND LOAN ASSOCIATION

2303 Grand Avenue — Baldwin, New York
2080 Bellmore Avenue — Bellmore, New York
112 South Country Road — Bellport, New York



bellbrook realty

gasper c. celaura
licensed real estate broker

440 south country road
east patchogue, new york 11772 (516) 289-4444

ORCHESTRA

Piano and Univox Stanley Wietrzychowski
Piano Rosetta Senkus
Guitar Paul O'Neill
Bass Guitar Robert Goldstein
Percussion Ralph Reinckens
Assistant Musical Director Rosetta Senkus

THE GREAT AMERICAN CLASSIC

Coming Next



SHOW BOAT

**AUG. 27
thru
SEPT. 7**

One of the greatest musical works of the American Theatre, "Show Boat" enriches Edna Ferber's novel, which has become a classic, with songs which are among the best loved of the musical stage.

As fresh today as it was over 30 years ago when it made its debut, "Show Boat" has returned to Broadway many times and has been filmed three times in Hollywood. It is affectionately regarded as the classic of the American stage.

The songs include:


- Cotton Blossom
- Make Believe
- O' Man River
- Can't Help Lovin' Dat Man
- Life Upon the Wicked Stage
- You Are Love
- Why Do I Love You?
- Bill
- In Dahomey



MAYER'S Flower Shop

"Fresh Flowers from Our Greenhouses to You" GR 5-1779
399 Medford Avenue — Patchogue, N. Y.





SOUTH SHORE

Steak Pub

RESTAURANT AND TAP ROOM

RTE. 112 NORTH PATCHOGUE

For Reservations
475-7926

10 min. from Gateway
So. Country Rd. to 27A
turn right on Rte. 112
Go 1 mi. - one block N.
of Sunrise Highway.

☒ kitchen open till 1 a. m. on weekdays
2:00 a. m. - Saturdays

☒ Just present your tickets before—or ticket stubs after the show...and we'll present you with the cocktail of your choice while you enjoy luncheon, dinner or late supper.

ENTERTAINMENT Friday and Saturday Nites

PATCHOGUE MUSIC CENTER

77 SOUTH OCEAN AVE. :: PATCHOGUE :: 475-3210

L.I.'s LARGEST DISCOUNT MUSIC CENTER

SHEET MUSIC - LESSONS - RENTALS - REPAIRS
GUITARS - DRUMS - PIANOS - ORGANS - BAND INSTRUMENTS

AUTHORIZED DEALER FOR

SOHMER	HARDMAN	GIANNINI	SHURE	GRETSCH	CLARK	LE BLANC
ALLEN	GIBSON	UNIVOX	BUFFET	PEARL	GEMENHARDT	BACH
THOMAS	FENDER	MARSHALL	CONN	KING	SLINGERLAND	ARLEY
WURLITZER	OVATION	S. G.	LUDWIG	MELVILLE	FARFISA	SELMER
WINTER	MARTIN	GUILD	ROGERS	ARMSTRONG	HOLTON	CORDOVOX

IF WE DON'T HAVE IT IN STOCK - IT PROBABLY DOESN'T EXIST

Richard York

"YOUR RED CROSS SHOE STORE" **OF PATCHOGUE**

QUALITY SHOES FOR THE ENTIRE FAMILY

14 South Ocean Avenue Patchogue 475-1047

Triangle Pacific

OFFERS THE SAME SERVICES AND PRODUCTS TO THE HOMEOWNER AS TO THE PROFESSIONAL BUILDER

SPECIALIZING IN NEW CONSTRUCTION - REMODELING & HOME DECORATING ITEMS

Triangle Pacific

ROUTE 112 MEDFORD

TEL. 654-1800

Theatre Parties -

SPECIAL RATES FOR GROUPS OF 25 OR MORE

CLUBS, GROUPS, ORGANIZATIONS, AUXILIARIES

HAVE FUN - MAKE\$\$\$\$\$

Schedule of Discounts (Except Friday & Saturday)

PLAYHOUSE Weeknights & Sun. 8:30 P. M.	No. of Seats	Regular Price	25-74 Save 10%	75-149 Save 15%	150-250 Save 20%	251-350 Save 25%	351-435 Save 30%
First 10 Rows	AA-E 233	\$5.50	\$4.95	\$4.68	\$4.40	\$4.13	\$ 3.85
Next 8 Rows	F-N 202	5.00	4.50	4.25	4.00	3.75	3.50

PLAYHOUSE Thurs. Mat. 2:00 P. M.	No. of Seats	Regular Price	25-50 Save 10%	Over 50 Save 15%
First 10 Rows	AA-E 233	\$4.50	\$4.05	\$3.83
Next 8 Rows	F-N 202	4.00	3.60	3.40

**SAVE UP TO 30%
CALL
286-1133**

BOX OFFICE HOURS:
1:00 - 10:00 p. m.
Box Office Window Closed all day Monday.
TELEPHONE - 286-1133

FIRE NOTICE: The exit indicated by a red light and sign nearest to the seat you occupy, is the shortest route to the outside. In the event of fire or other emergency, please do NOT run - WALK to that Exit. However, under normal circumstances, when leaving the Theatre, use the center rear exit.

SMOKING is prohibited in the Theatre, as required by a new Suffolk County NO SMOKING Ordinance. Please do not smoke in any area designated "No Smoking". This renders the offender subject to a fine or imprisonment or both.
-Fire Commissioner

For the Best in Home Entertainment

**Show Tunes....Big Band Sounds
.....Smooth Romantic Melodies.....**

Everybody knows where to tune in the best music ... but did you know that ONLY the Island Broadcasting System provides complete news from Associated Press, United Press and UPI Audio, plus most comprehensive local coverage. No wonder more people tune to us for the ultimate in radio service and entertainment!

Hear N.Y. YANKEE BASEBALL Every Weekend

ISLAND BROADCASTING SYSTEM

WALK
1370 KC

WALK
FM 97.5

WRIV
1390 KC

CHILDRENS THEATRE

FRIDAY & SATURDAY
MORNINGS 10:30 a.m.
ALL SEATS \$1.25



June 27, 28
July 4, 5

CHARLIE BROWN



July 11, 12
July 18, 19



Cinderella

PINOCCHIO

AT GATEWAY
PLAYHOUSE



July 25, 26
Aug. 1, 2



Aug. 8, 9
Aug. 15, 16



Aug. 22,
23



ISLAND
STATE
BANK

MEMBER F.D.I.C.

*Small Enough
To Know You...
Large Enough
To Serve You.*

For
Everything

Really Serving Central Suffolk... 'WITH THAT HOME TOWN TOUCH'



NEXT TIME ARRIVE IN STYLE
IN A GRANADA
OR OTHER FINE CAR FROM

PATCHOGUE  FORD

501 MEDFORD AVENUE - PATCHOGUE, NEW YORK 11772 475-1133

WRCN 104
FM

STEREO

you'll flip
over the
music!

About Gateway Playhouse

GATEWAY HAS ACHIEVED RECOGNITION as one of the leading summer theatre organizations in America. Established in 1949, it is best known as a talent showcase of New York and Hollywood. Producers, agents, critics, and directors attend GATEWAY PLAYHOUSE and Theatre productions. Hundreds of actors are carefully auditioned each year and an actor must be gifted in the Theatre Arts to secure a post in the resident company. GATEWAY'S CHOICE OF PLAYS runs from the most recent Broadway releases, to popular selected revivals.

GATEWAY COMPANY

ROGER SPEAR
DALE FURRY
CANDY DURKIN
SUSAN BASILE
PAULA JENNINGS
GERALYN LASIUK

JAMES CURT BERGWALL
DOUGLAS ALBERT
ANNE STOCKTON
GERALD GOSS
ROBYNNE FIELDS

ROY FIALKOW
MARCIA MC CABE
JANE BURLEY
LARRY HIRSCHHORN
JOHN BARRON
IVY AUSTIN

STAFF FOR GATEWAY PLAYHOUSE

DIRECTOR-CHOREOGRAPHER BOB DURKIN
MUSICAL DIRECTOR STANLEY WIETRZYCHOWSKI
COSTUME DESIGNER TRUDY BARTLUM
TECHNICAL DIRECTOR &
LIGHT DESIGNER GARY RAILEANU
STAGE MANAGER DIANE DUNCAN
ASSISTANT CHOREOGRAPHER KATHY SENG
PIANIST, ASST. MUSICAL DIRECTOR ROSETTA SENKUS
DIRECTORS AND TEACHERS STEPHEN SHEETZ
MICHAEL O'NEILL, KATHY SENG
CANDY DURKIN, STANLEY BOJARSKI
GEORGE BERNHARD
CHILDREN'S THEATRE DIRECTOR MICHAEL O'NEILL
BOX OFFICE & THEATRE PARTY CHAIRMAN NANCY KANA
BOX OFFICE CASHIER CAROLE BERRÉ
ASSISTANTS CHRIS McKEOWN, LINDA WEGNER
PLAYBILL ADVERTISING A. J. R. ASSOCIATES

Shore Manor

IS NOW OPEN ON SUNDAY AT 1:00 P.M.

Shore Manor

1443 MONTAUK HIGHWAY MASTIC 281-9872



JOIN US BEFORE OR AFTER THE THEATRE

Dinner in the Captain's Cabin
or

Open 4 p.m.
Sunday

Late Supper in the Starboard Room

SPECIAL COCKTAIL
LUNCHEONS
EACH WEEKDAY

Good Food - Good Wine - Good Spirits - Good Cheer

PSSST!!

39 M.P.G.

DATSUN
SAVES
BUT!

Patchogue Datsun
200 W. MAIN ST.
PATCHOGUE, 289-9100

SAVES
YOU
MORE

You'll
like doing
business with
Bankers Trust...
because we like
doing business
with you.

You'll find full-service banking
at Bankers Trust.

Bankers Trust of N.Y., N.Y. Office: Patchogue - The Patchogue - New Patchogue - Smithtown - Coram -
Patchogue - Lake Ronkonkoma - Mattitikon - Patchogue - Patchogue - The Bankers - Bankers Trust

A superb ecological achievement by



Maplewood Landings

-HOMES OF DISTINCTION-

in the beautiful Incorporated Village of Bellport

6 MAPLEWOOD DRIVE 286-3300

CRAIG BROOKS



CRAIG BROOKS RETURNS TO THE GATEWAY STAGE THIS YEAR IN THE ROLE OF JESUS OF NAZARETH.

AUDIENCES WILL REMEMBER HIM AS NIKOS IN "ZORBA" AND THE COURIER IN "1776". ORIGINALLY FROM MISSOURI, MR. BROOKS HAS TRAVELED THROUGHOUT THE UNITED STATES IN "FIDDLER ON THE ROOF" AND "1776".

HE IS ONE OF THE MOST VERSATILE MUSICAL TALENTS TO APPEAR ON THE GATEWAY STAGE. AS A COMPETENT PROFESSIONAL PIANIST AND MUSICAL DIRECTOR, IN "JESUS CHRIST SUPERSTAR" HE REVEALS HIS PERFORMING ABILITY IN A DEMANDING ROLE REQUIRING SENSITIVITY AND A COMMAND OF THE ROCK MUSICAL SCORE. PLANS ARE UNDERWAY FOR A WINTER TOUR OF "JESUS CHRIST SUPERSTAR" UNDER THE AUSPICES OF THE GATEWAY PLAYHOUSE.

SUFFOLK DANCE CENTER, LTD.



BALLET
PRE-BALLET
CONTEMPORARY
JAZZ BALLROOM
STUDIO WORKSHOP

700A Jericho Turnpike
Middle Island, N.Y.

CALL
924-8443
or
HR 3-3993

HALLER'S
BROOKHAVEN Bicentennial Edition



"The Manor of St. George"

This beautiful Plate is sand cast in Armetale, and is the first of a series depicting places of historical importance in Brookhaven Township.

Each Plate will be limited to 500 pieces and signed and registered. The price of \$25.00 includes a certificate of authenticity.

EXCLUSIVELY
AT HALLER'S

30 EAST MAIN STREET
PATCHOGUE, N.Y. 475-2002

16

Discover the wonderful fashion world
of quality and low prices at...

THE Rainbow Ranch

47 MAIN STREET
SOUTHAMPTON
PHONE 288-8771



ROUTE 25
MIDDLE ISLAND
PHONE 924-3400



BAYSIDE
FEDERAL
SAVINGS
and Loan Association

Has the Experience
..... for you

- Remote Drive-in Windows
- Safe Deposit Boxes
- Mortgage Loans
- Home Improvement Loans
- Student Loans
- Highest Interest Rates

◆ Open Daily 9 AM-3 PM • Fri. Eve. 6-8 PM
◆ Saturday 10 AM-1 PM

116 East Main Street, Patchogue
(516) 289-3200



ROUND-THE-CLOCK-SERVICE

LUCAS PHARMACY &
SURGICAL SUPPLIES

125 Main Street Bellport, New York
516-286-0079

Star Dance Studio
You've Been Promising Yourself...
DON'T PUT IT OFF
ANY LONGER!
LEARN TO DANCE
Everything from HUSTLE TO WALTZ
Call Now for an Appointment
13 N. Ocean Ave. Patchogue 289-2422
707 Rte. 110 Huntington 427-7157

CHEROKEE diner &
restaurant

475-9829

For dining or snacking - the Food is GOOD!



JUST TEN MINUTES AWAY FROM THE GATEWAY.
Go west on South Country Road to Patchogue, -
the Diner is on your right.

OPEN ALL NIGHT

COCKTAIL LOUNGE

Cor. E. Main St. & Phyllis Dr., Patchogue

17

MICHAEL FELICE, PROPRIETOR
MICHAEL FELICE, JR., MANAGER

Mickey Felice's Restaurant

ON THE GREAT SOUTH BAY
Visit our newly opened Clam Bar
with the original Gil Clark presiding.

600 SOUTH OCEAN AVE. PATCHOGUE, N. Y. GR 5-5700



OVER 300 BANKING OFFICES
ACROSS NEW YORK STATE



MARINE MIDLAND BANK

Bellport Branch: 20 STATION ROAD
BELLPORT, N. Y.

Member FDIC



R. J. WATTS INSURANCE

70 W. MAIN ST.
PATCHOGUE

For Your Home, Car, Family and Business TEL: 475-0762

LYONS FUEL OIL CO., INC.
23 Station Road
Bellport, N.Y.
AT 6-0395



DONALD W. SHAW

REAL ESTATE AGENCY
AT 6-0143

CLARIBEL BARRY SHAW, BROKER
PHILIP R. MUNSON, SALESMAN
Bellport's Oldest Real Estate Agency

Better Ole Fine Cuisine
Continental-Italian
LUNCH - DINNER
—Every day but Sunday—
South Country Road Brookhaven
2 Min. east of Gateway AT 6-0568

HAMMOND ORGAN STUDIOS
ORGANS FOR BEGINNERS & ARTISTS
Service - Teaching - Rentals

— LESLIE SPEAKERS —
255 Medford Ave. Patchogue 475-2286

BAYPORT FLOWER HOUSES, INC.

Cut Flowers - Floral Designs
940 Montauk Highway Bayport, L.I.
HR 2-0014



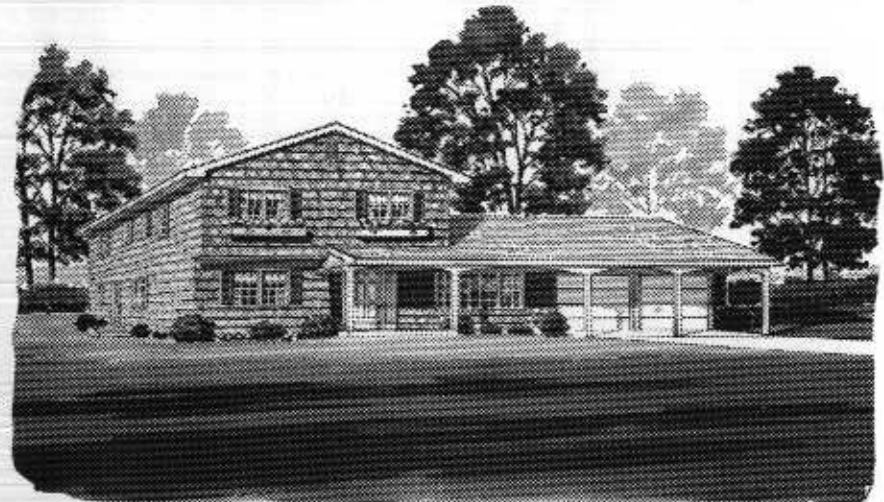
Visit Fire Island National Seashore,
Nature Walk & Beach at Watch Hill.

DAVIS PARK FERRY CO.

Sailing from Patchogue 475-1665

Enter the Wonderful World of

Fireplace Ridge



A fairyland of colonial Americana with uncrowded winding streets and lanes . . . amongst full grown trees, on sites of $\frac{3}{4}$ and $\frac{1}{2}$ acres. Stately 4-bedroom colonials and sprawling ranches, complete with basement, cedar shingles all around, wood double hung windows throughout, oak floors, oil fired hot water heating systems and huge brick fireplaces in wood paneled family rooms. Fabulous values at . . .

**7 $\frac{3}{4}$ % MTGES
AVAILABLE**

\$42,450

to \$45,850

Price subject to change without notice

DIRECTIONS: L.I. Expwy. to exit 64 (Rte. 112) Right (south) on Rte. 112 (4 miles) to E. Main St. (Montauk Hwy.) Rte 27A. Left (east) $\frac{3}{4}$ mile to fork (Anthony Buick). Bear right onto South Country Rd. and continue 5 miles to Fireplace Ridge.

Phone: (516) 286-9891

Another quality community by Abe Farber Homes