

GATEWAY PLAYHOUSE

PLAYBILL

1986

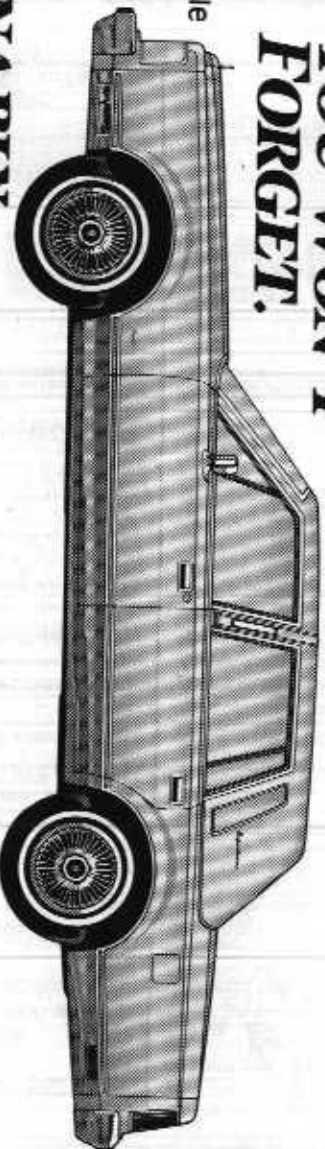
The King and I



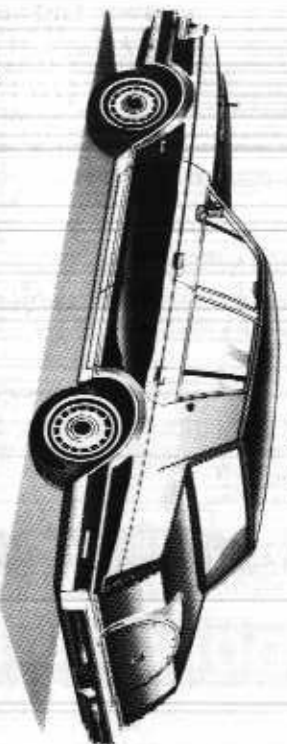

MERCURY
LINCOLN

Long Term Leasing Available
Custom tailored for your
needs

**ONE TOWN
YOU WON'T
FORGET.**



**UNQUESTIONABLY
CONTINENTAL.**



1986 Lincoln Continental

*The technology. The high fashion. Unmistakably Continental.
See us today!*

1986 Lincoln Town Car

Renowned ride...uncompromised comfort. In classic full-size seating. The 1986 Lincoln Town Car is an experience you'll always remember.

**NORTH-SHORE
LINCOLN-MERCURY INC.**

5316 Nesconset Highway
Port Jefferson Station, New York 11776
(516) 473-6900

THE BANK OF NEW YORK

LONG ISLAND REGION

BELLPORT BANKING OFFICE LOCATED AT:

32 Station Road
Bellport, New York 11713
Frances Aviano
Assistant Treasurer/Branch Manager
(516) 286-4200

Member FDIC 1986 The Bank of New York

Hine Grove Inn

On The Swan River



SUNDAY BRUNCH 12 NOON to 3:00 P.M.

Open Daily for Lunch
and Dinner at 11:30 a.m.
Saturday at 5:00 p.m.
Sunday at 12:00 p.m.
Open Late Friday and
Saturday Nights
Closed Tuesdays



Experience the
Sheer Pleasure of
a Lunch or
Dinner On Our
Umbrella Covered
Patio, Outside
Right on the Waterfront

Chapel Avenue and First Street
Patchogue, Long Island, New York
(516) 475-9843

GOOD ANTIQUES

are few and far between except at



Located Just East of the Gateway Playhouse
378 South Country Road - Brookhaven Hamlet - 286-8503

Purchasing 286-8503

ALLAN and ALLAN ARTS LTD.
in association with
PAUL ALLAN and JOHN HODGE
present

Rodgers and Hammerstein's

The King and I



Based on the novel entitled ANNA AND THE KING OF SIAM by Margaret Landon.

Starring

JAMES GERTH and PATRICE PICKERING
with

ELISA DRAGATO

ANDREA GOODZEIT

TOM STOKES

Music by
RICHARD RODGERS

Book & Lyrics by
OSCAR HAMMERSTEIN II

Scenic Design &
Technical Direction
MICHAEL BOYER

Light Design
JEFF BELLANTE

Costume Design
CECILIA FREIDERICHS
Additional Costumes
by
YOLAN PINTER

Stage Management
JAMES KANE

Musical Director
CHERIE ROSEN

Choreography
ROBERT DURKIN

Directed by
PHILIP GIBERSON

THE KING AND I is presented through special arrangement with The Rodgers and Hammerstein Theatre Library,
578 Madison Avenue, New York 10022.

Bellport CHOWDER HOUSE

AN EATING AND DRINKING TRADITION



FULL MENU

FULL BAR

Open Daily For Lunch and Dinner
Seven Days A Week

Sunday - Thursday till 11:00 p.m. Friday & Saturday till Midnight

SPECIALIZING IN FRESH LOCAL SEAFOOD
AT AFFORDABLE PRICES

Before and After the Show You'll Want to Meet and Eat At
THE CHOWDER HOUSE

TAKEOUT

CATERING

19 Bellport Lane • Bellport Village • 286-2343

CAST OF CHARACTERS

(In order of appearance)

Captain Orton	HARRY UREN
Louis Leonowens	JONATHON TAYLOR
Anna Leonowens	PATRICE PICKERING*
The Interpreter	KEN FORMAN
The Kralahome	FRANK KRONYAK
The King	JAMES GERTH*
Phra Alack	ED MURRAY
Lun Tha	TOM STOKES
Tuptim	ELISA DRAGOTTO
Lady Thiang	ANDREA GOODZEIT*
Royal Wives	MARIANNE RICOTTA, STEPHANIE LUBROTH, CHRISTINA FALLON, MARYLOU BARBER, LIZ SHIRLEY, GINGER TIDWELL, JUDY RIVERA, ELISSA BERHALTER
Prince Chuulongkorn	CHRISTOPHER BRADLEY
Princess Ying Yaowlak	VICTORIA PALMER
Royal Princes and Princesses	MICHELLE SUESENS MERRILL KERRINS, MERRIN KERRINS, DANNY BERHALTER, STEPHANIE QUIRK, ANGELA SUESENS, THERESA STARKE, ROBERT BERHALTER, BROOKE SCHIFFMAN, JENNIFER GLAITZER, CHRISTOPHER CORCIONE, SUSAN KATE HEANEY
Sir Edward Ramsay	JIM TULLY
Female Guards	CINDY LARRACUENTO, SARAH WATCHMAN, CYRECE BERNSTEIN, SHERRILL McCracken, RAMONA TOUSSANT
Male Guards; Monks	TOM PROCHNOW, FRANK BONVENTRE, ORLANDO PENA, LAW LAMPLIGHTER

ROYAL BALLET: DANCERS

Eliza	Ginger Tidwell	Simon's Slaves	Liz Shirley
Uncle Thomas	Craig North		MaryLou Barber
Topsey	Judy Rivera	Maidens	Marianne Ricotta
Little Eva	Melissa Giattino		Christina Fallon, Ramona Toussant
Angel	Marylou Barber		Cyrece Berstein, Liz Shirley
Simon of Legree	Tom Prochnow	Servants	Frank Bonventre, Law Lamplighter, Christopher Bradley, Jonathon Taylor, Tom Stokes, Ken Forman
Simon's Dogs	Orlando Pena, Craig North, Ed Murray		



*Actors employed in this production are members of Actors' Equity Association, the union of Professional Actors and Stage Managers in the United States.

Shore Manor

GREAT FOOD, COMFORTABLE ATMOSPHERE, CASUAL ATTIRE
A favorite spot for Gateway Performers

JOIN US BEFORE OR AFTER THE THEATRE
WE'RE OPEN LATE

Dinner in the Captain's Cabin or
Late Supper
and Spirits in the Tap Room

SPECIAL CATERING
FOR SMALL PARTIES

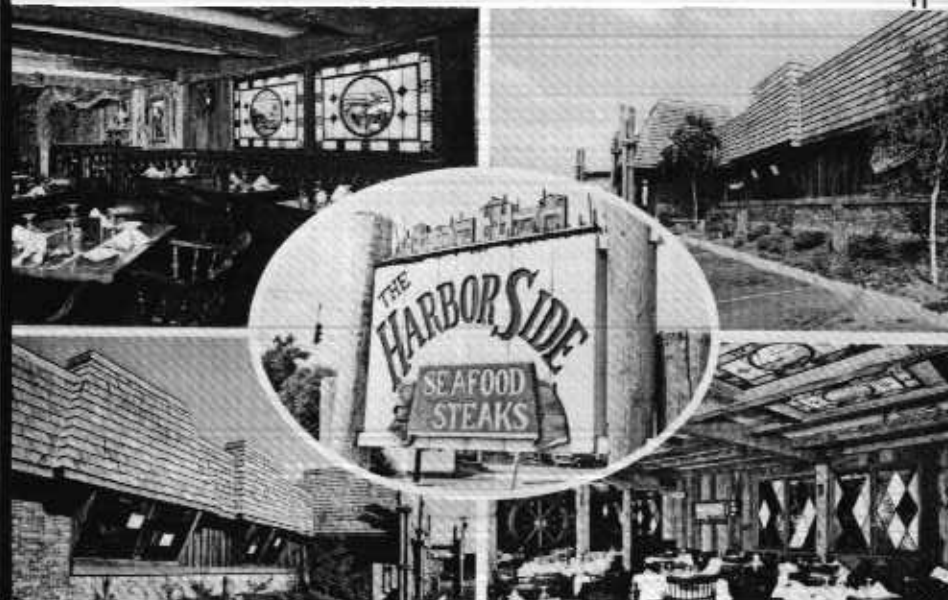
1443 Montauk Highway :: Mastic :: 281-9872

Harbor Side

Incomparable Seafood/Steakhouse

SPECIAL SUNDAY DINNERS

- Complete Luncheons
- Delicious Dinners
- Musical Entertainment Wednesday thru Saturday



Open 7 Days a Week At 11:30 a.m.



rating by Barbara Ruder, Newsday

Phyllis Drive at East Main Street
Patchogue, New York
654-9290

BEACON FEDERAL SAVINGS BANK



112 So. Country Rd., Bellport, NY 286-2800

1. HIGH INTEREST RATES ON ALL SAVINGS ACCOUNTS
2. LOWEST RATES ON HOME IMPROVEMENT LOANS
3. N.O.W. CHECKING ACCOUNTS
4. TRAVELERS CHEQUES
5. FULL SAFE DEPOSIT BOX FACILITIES
6. SAVINGS INSURED - MEMBER: FSLIC
7. LOW COST LIFE AND MORTGAGE INSURANCE

Other Offices:

BALDWIN BELLMORE HICKSVILLE OCEANSIDE GARDEN CITY SO

SYNOPSIS OF SCENES

ACT I

- SCENE 1: The Deck of the Chow Phya
SCENE 2: The King's Library and the Royal Palace
SCENE 3: A Corridor in The Royal Palace
SCENE 4: The Schoolroom
SCENE 5: Anna's Bedroom
SCENE 6: The King's Study

ACT II

- SCENE 1: A Reception Room at the Palace
SCENE 2: A Corridor
SCENE 3: The Theatre Pavilion
SCENE 4: The Kings Library
SCENE 5: Anna's Bedroom
SCENE 6: The King's Study

MUSICAL NUMBERS

ACT I

- Overture Orchestra
"I Whistle A Happy Tune" Anna and Louis
"My Lord and Master" Tuptim
"Hello Young Lovers" Anna
"March of the Siamese Children" The Royal Princes and Princesses
"A Puzzlement" The King
"The Royal Bangkok Academy" Anna, Wives and Children
"Getting to Know You" Anna, Wives and Children
"We Kiss In A Shadow" Lun Tha and Tuptim
Reprise: "A Puzzlement" Prince and Louis
"Shall I Tell You What I Think Of You?" Anna
"Something Wonderful" Lady Thiang
Finale - Act I King and Ensemble

ACT II

- Entr' Acte Orchestra
"I Have Dreamed" Lun Tha and Tuptim
Reprise: "Hello Young Lovers" Anna
Ballet: "The Small House of Uncle Thomas" Tuptim and Wives
"Song of the King" Anna and The King
"Shall We Dance" Anna and The King
Reprise: "I Whistle a Happy Tune" Anna
Finale Ultimo Ensemble

ACT III

TAKES PLACE AT

Patchogue Floral's Fantasyland

COME
BROWSE

LARGEST EMPORIUM CATERING TO
THE ESTHETIC PROCUROR OF UNUSUAL HOME DECOR—

Giftware - Art Crafts - Custom Permanent Arrangements

10 Robinson Avenue

East Patchogue

475-2059

Vincenzo's Hide-a-Way

Seafood — Steaks — Cocktails

*Bring In This Ad And
Have a Free After Dinner
Drink. Good On Night of
Show.*

LIVE ENTERTAINMENT WED. - SAT.

Catering Small Parties

Stop in Before or After the Show

435 East Sunrise Highway
(North Service Road)
¼ mile west of Hospital Road
East Patchogue, New York 11772

Call For Reservations
(516) 758-8819

Tel: 281-5877

THOMAS M. NEPELL & SONS, INC.

GENERAL INSURANCE

Business • Life
Homeowners • Auto

76 Neighborhood Road
Mastic Beach, N.Y. 11951

Cabot's Florist

For the unusual rather than the usual

475-0408

91 Medford Avenue - Patchogue

THE KING AND I

Technical Staff

Jay Aiken, Kim Hildebrand, Bernadette McGay, Anne Heed,
Juan Bustamante, Debra Post, David Savage, Mark Frederick

Wardrobe

Yolan Pinter, Ella Skwarska, Jeanne Dawson, Lois Suesens, Mary Allen

Properties

Debra Post

Scenic Artist

Flo Frintzilas

HOME OF KARASTAN



**LINOLEUM • TILE
CARPETS • RUGS
• BROADLOOM**

Philadephia - Lees - Milliken - Wunda Weave
Armstrong's - Congoleum - Solarian - Mannington

464 East Main Street • Patchogue, New York
(516) 289-1112




WRIV 1390AM

EASTERN LONG ISLAND'S
LOCAL NEWS LEADER

- **Biggest Hits of the 50's & 60's**
- **Trivia Contests**
- **Prizes & Surprises**

WALLEN'S IGA MARKET

MAIN STREET BELLPORT, N.Y.

QUALITY FOOD - IN A FRIENDLY
NEIGHBORHOOD MARKET

HOURS:

8-7 p.m. - Mon. - Thurs. 8-6 p.m. - Saturday
8-8 p.m. - Friday 8-1 p.m. - Sunday

FULL LINE OF:
Choice Meats & Poultry
Groceries
Produce & Dairy

"It's Great"

GREAT FOOD • GREAT BAR • GREAT
AMBIENCE • AND... GREAT PRICES

BK & THE BAR

BELLPORT KITCHEN INC., 159 S. Country Road
Bellport, New York — 286-8588

Lunch 11:30 a.m.

Dinner 6:00 p.m. on

JOIN US AFTER THE THEATRE FOR
COCKTAILS AND DESSERTS.

Bayport Flower Houses, Inc.

940 Montauk Highway
Bayport, Long Island, New York 11705
472-0014
Since 1932



E.J. McBay

516-585-9638

TEMPERATURE CONTROL SERVICE

REPAIRS & INSTALLATION OF
• REFRIGERATION EQUIPMENT
• AIR CONDITIONING EQUIPMENT
• ICE MACHINES

family melody centers

L.I.'s Discount Music Department Stores

Patchogue

Smithhaven Mall

Plainview



Center Moriches Paper Co., Inc.
Wholesale Distributors

26 Frawein Road • P.O. Box 1217
Center Moriches, New York 11934
(516) 878-1200

ANTHONY

AUTO RENTAL INC.

125 E. SUNRISE HIGHWAY
PATCHOGUE, NY 11772

RYDER, THE BEST TRUCK MONEY CAN RENT



National Car Rental

Local & One Way Cars & Trucks

Tony Fierro

(516) 475-6656

RENTAL RELIABLE LEASING



15 PASSENGER VAN

CARS FROM \$9⁹⁵ PER DAY
PLUS MILEAGE



CARGO VANS



22 PASSENGER
VEHICLES

131 Sunrise Highway • Patchogue, New York 11772
BETTY FIERRO LONG TERM LEASING (516) 654-2600



LONG ISLAND'S BUSINESS AND PERSONAL BANK.

UNION SAVINGS BANK

CORAM, HUNTINGTON, LAKE GROVE, PATCHOGUE, ROCKY POINT, SHIRLEY, WESTHAMPTON BEACH.
MEMBER FDIC

Nationwide 800-626-7779
within New York State 800-832-3131



FREE DELIVERY

415 ROANOKE AVE. • RIVERHEAD, N.Y. 11901
TEL. (516) 727-2430 • (516) 475-0914

Murray & Quarltre Fuel Oil Corp.

locally owned and operated
Burner Service & Installation
Metered Automatic Deliveries
Service Contracts

286-9169
BROOKHAVEN

THOMAS D. MURRAY
ALAN J. QUARLTRE



SHIP'S WHEEL INN

a little out of the way...
but way out of the ordinary!

Restaurant
Lounge

Seafood & Continental Specialties plus...
The "BEST HOT and Cold Salad Bar" in Suffolk

OPEN: Wednesday - Friday 5:00 p.m.
Sat. 4:00 p.m.

Sunday: Brunch 11:30 - 3:00

Dinner from 4:00 p.m.

Please Call
For Reservations

90 Colonial Drive
East Patchogue
289-3814
at Dockside 500 Marina

GATEWAY PLAYHOUSE STAFF

EXECUTIVE PRODUCERS Ruth, Robin and Stan Allan
ASSOCIATE PRODUCERS Paul Allan, John Hodge
DIRECTORS Philip Giberson, Robert Durkin
STAGE MANAGER James Kane
MUSICAL DIRECTOR Cherie Rosen
SET DESIGNER/TECHNICAL DIRECTOR Michael Boyer
LIGHTING DESIGNER Jeff Bellante
ASSISTANT STAGE MANAGER Alee Ralph
ASSISTANT CHOREOGRAPHER Craig North
MASTER CARPENTER Kim Hildebrand
SHOP FOREMAN Jay Aiken
CHILDREN'S THEATRE MUSICAL DIRECTOR Harry Uren
BOX OFFICE MANAGER Nancy Kana
BOX OFFICE Valerie Lysloff, Kristi Dell,
Hwasoon Mullaney, Janice Spitznagel
CONCESSION Mil Kana
MAINTENANCE Hank Peters, John Train, Joe Pisani
PRODUCTION PHOTOGRAPHER Mil Kana

OLD INLET INN

108 South Country Road
Bellport, Long Island
(516) 286-2650



One of the oldest, finest restaurants in Suffolk County. Serving continental cuisine in an elegant old Victorian home atmosphere. Placed on the National Register of Historic Places July 4, 1980. Specializing in local seafood, rack of lamb and homemade pastries. Vegetable dishes available.

Ideal intimate stop before or after the show at Gateway.
After show Late Menu Friday & Saturday nights, 11 - midnight.
Jim Ahrend at the Piano Friday and Saturday. Patio for drinks and dining.
Open for lunch Tuesday - Friday; for dinner Tuesday - Sunday.
Sunday brunch (includes complimentary drink.) Closed Mondays.
Reservations Suggested — Jackets requested.



shop in BELLPORT VILLAGE



Friendly, Courteous Service in a Relaxed Congenial Atmosphere

BELLPORT LIQUOR STORE

(516) 286-0316
RON and SANDY HERZOG
129 Main Street Bellport, New York 11713



THE PORT CONFECTIONERY and ICE CREAM PARLOR

Serving Breakfast — Luncheon — Dinner
Open Late Thursday, Friday and Saturday
117D S. Country Rd., Bellport, N.Y. 11713
(516) 286-1655 — KAREN and MICHELE



7 Bellport Lane
Bellport
Town & Country
Clothes



VILLAGE PHARMACY

125 Main Street
Bellport, New York 11713
(516) 286-2244
BARRY A. SINGER
Cards, Gifts &
Fine Fragrances



Bayberry
Travel
143A South Country Road
Bellport, New York 11713
(516) 286-4500

VILLAGE LIMOUSINE of Bellport, Long Island

117 South Country Rd., Bellport, N.Y. 11713
286-9494 — 286-8841
JEANNE GERAINÉ

BROWN'S OF BELLPORT, Inc.

AMERICAN MOTORS
AMC — JEEP — RENAULT
152 South Country Road
Bellport, New York 11713 286-0229

286-0760 DR. RESTIVO

STATION BEVERAGE, INC.

Discount Beer & Soda
417 STATION ROAD
BELLPORT, N. Y. 11713
ALFRED RESTIVO

Bellport Delicatessen

Catering is our Specialty
124 Main Street, Bellport
(516) 286-0444
Open 6:00 a.m. - 10:00 p.m. 7 Days a Week
Open for Breakfast and Lunch Specials



Wallace/Intemann Ltd. REAL ESTATE
153 South Country Road, Bellport
Emlee Intemann (516) 286-3366

FREE LIMOUSINE SERVICE

For your Summer Cruise!

This coupon entitles the bearer to free round trip limousine transportation to New York (Passenger Ship Terminal, JFK or LaGuardia airports) when presented at the time of booking a cruise (minimum duration: seven days) for two or more persons departing before October 1, 1986. This offer is not valid in connection with Bellport Travel's special group cruises, and only applies to new bookings. Additional restrictions may apply.

See the cruise experts

BELLPORT TRAVEL, INC.

12 Station Road, Bellport, New York 11713
(516) 286-2626

July 30th - August 17th

If Don't Mean A Thing If It Ain't Got That Swing! And swing, it has! This season's dance sensation **SOPHISTICATED LADIES** brings us Duke Ellington's smooth jazz—Highlights: "Satin Doll," "In A Sentimental Mood," "Mood Indigo," "Do Nothing Till You Hear From Me" and "I Got It Bad and That Ain't Good." It's Sleek, Sexy and Scintillating, recalling an era when the clubs were 'hot' and the 'cats' were cool! Stated for a 1986 Daedalus Productions Tour, it Sizzles!



August 20th - September 7th

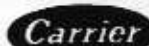


The 60's, that's when we fell for the **LEADER OF THE PACK!** A rockin' and rollin' dynamite review with a line up of tunes that will knock your bobby socks off: "Chapel Of Love," "I Can Hear Music," "Hanky Panky," "River Deep Mountain High," "Da Doo Ron Ron," "Wait 'Til My Bobby Gets Home" and "Be My Baby." This will be the exclusive, first time anywhere, post Broadway presentation on its way to National Tour. See it while it's hot!

Therm A Trol Inc.



AIR CONDITIONING - HEATING



120 NORTH DIVISION AVENUE
BLUE POINT, NEW YORK 11715

(516) EM 3-6600

Gateway's Front Lawn Is Watered By

SUFFOLK SPRINKLER SYSTEMS INC.

Automatic Lawn Systems
Installed in a Professional Manner
No Lawn Damage



DON'T DELAY CALL TODAY FOR FREE ESTIMATE
We Welcome Repairs, No Job Too Small



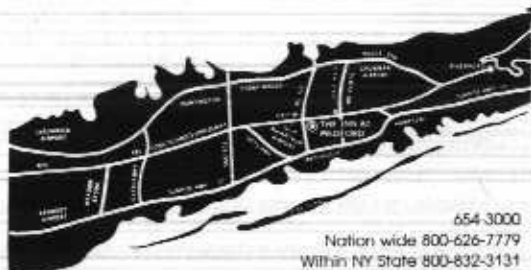
2 Boston Avenue
Medford
289-6006

RESIDENTIAL
COMMERCIAL

Licensed by the Suffolk County Consumer Affairs #1599-HIC

THE INN AT MEDFORD

Located at Exit 64
off the
Long Island Expressway



654-3000
Nation wide 800-626-7779
Within NY State 800-832-3131
RTE. 112, EXIT 64 L.I.E., MEDFORD, N.Y. 11763

ALL COUNTY Home Security Systems Residential • Commercial



WIRELESS

- Burglar Alarms
- Heat Detectors
- Fire
- Central Station
- Freeze Alert
- Medical Alert

**FREE
ESTIMATES**

Authorized Distributor For
Dynamark • AllGuard
Safety Security Products

(516) 286-8330
All County Home Security Systems
680 South Country Road
East Patchogue, New York 11772



YOUR LOCAL MERCHANT
with NATIONAL CHAIN
BUYING POWER!

OPEN 7 DAYS

**SEE US for all your
HARDWARE NEEDS**

- Hand Tools
- Power Tools
- Plumbing
- Electrical
- Gifts
- Housewares
- Paint
- Baking

- Bath Shop
- Garden Shop

475-7131

406 East Main St., Patchogue
opp. Plaza Theatre

since 1898
ROE agency inc.

▲ INSURANCE
REAL ESTATE ▲

125 East Main Street :: Patchogue, N.Y. (516) 475-4000

Who's Who

ELISA DRAGOTTO (*Tuptim*) Elisa is happy to be debuting at Gateway in the role of Tuptim. This is a special treat since she is more accustomed to working as a concert vocalist. She has performed with the Utah Symphony Orchestra and the Promise Valley Playhouse. Favorite roles include Suzanna in "The Marriage of Figaro," Gretel in "Hansel and Gretel" and Adele in "Die Fledermaus." Miss Dragotto holds a Bachelor of Music degree from Brigham Young University.

JAMES GERTH (*The King*) has just completed a tour of the United States and Canada, playing the dual roles of Cervantes and Don Quixote in "Man of La Mancha." A graduate and Barnes scholar from the Theatre Department at Adelphi University here on Long Island, he has appeared in many regional and stock theatres around the country in such roles as Applegate in "Damn Yankees," Mac Heath in "Three Penny Opera," Cliff Bradshaw in "Cabaret" and George in "Same Time Next Year." Jim starred in the Off-Broadway hit musical "On The Air," a spoof of radio in the 1930's and 40's and he can be heard in many radio and television commercials on the air today. In the fall of this year Jim will realize a dream, when he opens his one-man show, "Mark Twain" at An Evening Dinner Theatre in Elmford, New York. His other title roles include "The Music Man," "Jesus Christ Superstar," "Pal Joey," "Dylan Thomas" and "Scapino." Playing Royalty is no stranger to Jim, having played King Charlemagne in "Pippin," the swashbuckling 'Pirate King' in "Pirates of Penzance" and a role which began his theatrical career two decades ago, The Monarch in his eighth grade production of "The King and I."

ANDREA GOODZEIT (*Lady Thiang*) divides her time between performing and music directing. She has sung many premieres (Holland Festival, La Mama, Golden Fleece Opera) and acted with the Bread and Puppet and New Cycle Theatre companies. Some of her favorite roles include Susanna, Zerlina, Masetta, Queen of the Night, Jenny in "Mahogany," Miss Jessel in "Turn of the Screw," Sarah Brown in "Guys and Dolls," and Cecily Cardew. Ms. Goodzeit has music-directed at the Edinburgh Festival, Capital Repertory Company and served as chorus master and coach for the Utah and Bel Canto Operas. She has been on the faculty at New York University and the Netherlands State Theatre School. She holds an M.A. from Columbia University and studied at the Amsterdam Muziek Lyceum and New England Conservatory.

PATRICE PICKERING (*Anna*) is delighted to debut on the Gateway stage in the role of Anna. She was the Assistant Dance Captain and understudy for 15 roles in the 1982 Tony Award-winning musical "Nine," with Raul Julia and Sergio Franchi. She played Lady Sybil and understudied Guenevere opposite both Richard Burton and Richard Harris, in the 1980 Broadway revival and National Tour of "Camelot," and in the 1983 production filmed for HBO. She made her Broadway debut as Gladys and Rosabella's understudy in the 1979 revival of "The Most Happy Fella." New York and Connecticut audiences have seen Miss Pickering as Eliza Doolittle in "My Fair Lady," Maria in "The Sound of Music," Tzeitel in "Fiddler on the Roof," and as the Virgin Mary in the "Living Nativity," at Radio City Music Hall's "1985 Christmas Spectacular." On television she created the role of Gina Pugliesi in the popular drama "Loving." She holds a Bachelor of the Fine Arts Degree from Ithaca College and a Master's Degree from Hartt College of Music. Miss Pickering has taught music theory and applied voice at the college level. She would like to thank her parents for their love and support and dedicate her performance to her mother who played Anna the first time Patrice ever saw the "King and I."

TOM STOKES (*Lun Tha*) comes to Gateway after a twelve week run of "Joseph and... Dreamcoat," at Circa '21 Dinner Theatre in Illinois. He appeared at Gateway in last season's productions of "Baby," "Evita," and "West Side Story." Favorite roles include Tony in "West Side Story," Tom Snout in "A Mid-Summer Night's Dream" and Linus in "Snoopy!" Last fall Tom had the pleasure of working on the successful Off-Broadway revival of "Dames at Sea." Tom hopes to pursue a Master's Degree in acting and directing in the fall of 1987. He would like to dedicate his performance of Lun Tha to Randy Anderson.

PHILIP GIBERSON (*Director*) has done over 100 productions in New York, on National Tours and Regionally. This past season in New York, Mr. Giberson directed the Off-Broadway premiere of "Those Awkward Years," a revival of "They're Playing Our Song," at Equity Library Theatre; "The Mistress of Inn," at the Mannie Greenfield Theatre; and this Spring, his National Tour of "Man of La Mancha" was enthusiastically received throughout the United States and Canada. His additional musical credits include "Jacques Brel," "Marat/Sade," "The Fantastiks," "Side By Side by Sondheim," and "Getting My Act Together." Mr. Giberson is also a staff director and teacher at the American Academy of Dramatic Arts (New York City).

PICKLE DELI SQUARE



In addition to the best sandwich in town

PICKLE DELI CATERS TO YOU!!!

Having A Party?

We specialize in party heroes by the foot...
3-4-5-6 Footers. Priced from \$7.95 per foot
(48 hour advance notice)

Hot Buffets *Cold Buffets*

(On) The Square - Waverly Ave. and West Main St.
PATCHOGUE
475-0177

500 CLUB

The Place To Go
After The Show
Dancing After Dark

2 Dance Floors — 5 Lounges

2 Bars

Open Friday & Saturday From 9:00 p.m.

Proper Casual Attire

90 Colonial Drive, E. Patchogue, New York
289-3800

After leaving Playhouse, go west on South Country Road for 3 miles to Southern Boulevard (South Country Shores) on left, turn left, go to full stop sign and turn right at entrance of Dockside 500 and the 500 Club.

Tel: 286-0395

LYONS FUEL OIL CO., INC.

23 Station Road, Bellport, N.Y.

Working together to serve our neighbors!

BOARD OF DIRECTORS

George E. Beatty, Jr.
D. Donald D'Amato
George F. Frey, Ph. D.
David Herold

Bayside Federal

Seph M. Mandel
Kurt R. Schmeller, Ph. D.
Louis L. Theiss, Jr.
Charles Vite
Robert T. Waldbauer

12 Offices serving Queens, Manhattan, Nassau and Suffolk

Bayside • Bay Terrace • Clearview • Glen Cove • Glen Oaks • Great Neck
Manhattan • Patchogue • Ridgewood • Valley Stream • Windsor Park

212-423-8000 • 516-486-7220

Deposits insured up to \$100,000 by the F.S.L.I.C.



NADEAU'S HARDWARE

9 BELLPORT LANE
BELLPORT, NY 11713

(516) 286-0510

ORCHESTRA

Musical Director/Keyboards Cherie Rosen
Synthesizer Alkiviades Steriopoulos
Woodwinds Gene Kaplan, B.J. Carpin
Trumpet Tim Schade
French Horn Tom Gellert
Trombone David Janow
Bass Tom Charlap
Percussion Don Yallech

FIRE NOTICE: The exit indicated by a red light and sign nearest to the seat you occupy, is the shortest route to the outside. In the event of fire or other emergency, please do NOT run. WALK to that Exit. However, under normal circumstances, when leaving the Theatre, use the center rear exit. SMOKING is prohibited in the Theatre, as required by a new Suffolk County NO SMOKING Ordinance. Please do not smoke in any area designated "No Smoking." This renders the offenders subject to a fine or imprisonment or both.

Fire Commissioner

All Playhouse Plumbing Done
By

Beach Plumbing & Heating, Inc.

Phone 281-4396
John Villano

Alterations Repairs New Work

STAGE DOOR Dance SCHOOL OF

BALLET • TAP • JAZZ
• AEROBICS • GYMNASTICS
Pre-School Thru Adults

DIANE GIATTINO
Member of Brookhaven
Theater Dance Guild

678 SOUTH COUNTRY ROAD, EAST PATCHOGUE
654-8858

gary d. cannella associates gary d. cannella
architects planners architect



91 green street
huntington new york 11743 • 516-673-0001
66 medford avenue
patchogue, new york 11772 • 516-654-4261

★ IMAGE and COLOR CONSULTATIONS
★ WARDROBE ASSESSMENTS
★ SHOPPING ASSISTANCE
★ INFORMATIVE TALKS for
GROUPS and ORGANIZATIONS
call
LOUISE ORR 289-2158


BRADIE MOWER SERVICE

Lawn • Garden • Construction Equipment • Rentals

"We Service What We Sell"

Snapper - Yazoo - Lawn-Boy - Jacobsen - Tanaka

1543 Montauk Highway • East Patchogue, New York 11772
(516) 286-9550



MEAT FARMS

Famous for our specially trimmed meats and our specialty spiced Italian Sausage

HOLBROOK:
960 Patchogue-Holbrook Road, 981-3877
EAST ISLIP
Carelton Avenue & North Main Street, 277-3409
MEDFORD: 1600 Route 112 (Medford Avenue), 475-0719
CENTEREACH: 764 Middle Country Road, 981-1872
PORT JEFFERSON STATION: 500 Jefferson Plaza, Route 112, 473-5030
DEER PARK: Bay Shore Road and Deer Park Avenue, 667-6633
COMMACK: 134 Commack Road, 462-6515
ACCOUNTING OFFICE: 1770 Middle Country Road, 981-1989

LONG ISLAND

FLOWER GARDEN

470 South Country Rd.
E. Patchogue,
N.Y. 11772
(516) 475-0494

"We're On The Grow"

- Natural Display Gardens
- Annuals, Perennials, Vegetables, Herbs
- Garden Pools, Bridges, Water Plants & Accessories
- Wood, Clay, Plastic, Fiberglass-Cement Planters
- Ornamental Shrubs, Trees and Specimen Plants
- Foliage, Bonsai and Flowering Plants
- Full Service Florist

WE OFFER:

COMPLETE LANDSCAPE DESIGN & CONSTRUCTION FOR COMMERCIAL RESIDENTIAL NEEDS

- Plant, Shrub & Lawn Installation
- Spas and Hot Tubs - Portable or Built In
- Decorative Walkways, Fencing & Pool Enclosures
- Variety of Free Standing & Built In Planters
- Terracing, Retaining Walls, Custom Decking
- Irrigation Systems for Beds & Lawns
- Specialty Gardens - Japanese, Traditional, English, Rock

FROM OUR LANDSCAPE DIVISION
"Let Us Make Your Exterior Superior"




CHILDREN'S THEATRE

ALL SEATS \$3.00

FRIDAY & SATURDAY MORNINGS 10:30 A.M.
LIVE SHOWS WITH MUSIC

No Advance Sale - No Reserved Seats - First Come First Served
Shows Subject To Change Without Notice



July 11, 12
18, 19



July 25, 26
August 1, 2
8, 9

WIZARD OF OZ



August 15, 16
22, 23
29, 30

Goldilocks and the CARE BEARS

PATCHOGUE PLATE GLASS CO. INC.

PICTURE FRAMING

64 West Main Street

GLASS-PLEXIGLASS - STORE FRONTS
MIRRORS - AUTO GLASS - INSURANCE CLAIMS

Patchogue, New York 11772

POSTER PRINTS

(516) 475-1790/1791



COLEMAN CESSPOOL SERVICE, INC.

SCHWAB's Cesspool Cleaning

RELIABLE SERVICE

A. COLEMAN
Phone: (516) 475-1733

1 CHAPEL AVENUE
EAST PATCHOGUE, NEW YORK 11772

Restaurant Directory

AMERICAN/BAR

BK & The Bar

159 South Country Road
Bellport, N.Y. 286-8588

Shore Manor

1443 Montauk Highway
Mastic, N.Y. 281-9872

CONTINENTAL

Carmen's River Inne

Main Street
Yaphank, N.Y. 924-4445

Old Inlet

108 South Country Road
Bellport, N.Y. 286-2650

Pine Grove Inn

Chapel Avenue and First Street
Patchogue, N.Y. 475-9843

Ship's Wheel Inn

90 Colonial Drive
E. Patchogue, N.Y. 289-3814

DELI/RESTAURANT

Pickle Deli Square

Waverly Avenue and W. Main St.
Patchogue, N.Y. 475-0177

DINER/RESTAURANT

Island Grill

Sunrise Highway and Phyllis Dr.
Patchogue, N.Y. 475-2110

DINING/DANCING

500 Club

90 Colonial Avenue
E. Patchogue, N.Y. 289-3800

Sunland Manor

416 South Country Rd.
Brookhaven, N.Y. 286-5885

ICE CREAM/RESTAURANT

Port Confectionery

117 D South Country Road
Bellport, N.Y. 286-1655

ITALIAN

Pat & Jim's

645 Route 112
Patchogue, N.Y. 475-7755

South Country Inn

South Country Road
E. Patchogue, N.Y. 758-1919

SEAFOOD/STEAK

Bellport Chowder House

19 Bellport Lane
Bellport, N.Y. 286-2343

Harbor Side

Phyllis Drive at E. Main Street
Patchogue, N.Y. 654-9290

Pier 112

1711 Route 112
Medford, N.Y. 289-2330

Vincenzo's

436 East Sunrise Highway
Patchogue, N.Y. 758-8819

SPANISH/MEXICAN

Meson Ole'

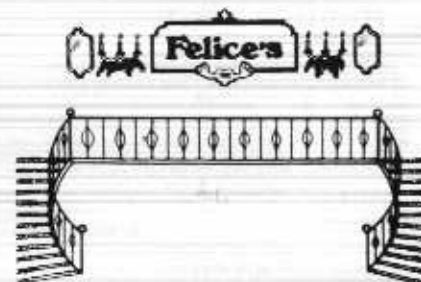
507 West Main Street
Patchogue, N.Y. 475-1557

You never forget
your first Girl.



SINKOFF BEVERAGE & INC.

County Route 101, Yaphank, New York



A Name Worth Looking Into

Call For Information
on our
Off-Premises
Catering Service
"Traveling With Taste"

475-1300 Montauk Highway
Patchogue, L.I.



For the service, dining
and the atmosphere of
Long Island
Something you'll want
to remember...
try the

Pier 112

Restaurant & Cocktail Lounge

featuring:

- Complete Luncheons from \$5.95
 - Early Bird Dinners 7 Days a Week from \$8.95
 - Complete Dinner Specials
 - Catered Parties (up to 75 persons)
- For your round dining - open 7 days a week

Pier 112

Restaurant & Cocktail Lounge
1711 Route 112, Medford, NY
(across from Del Boca)
289-2330

All Major Credit Cards Accepted Open Daily at 11:30 am
Reservations accepted - but not required



Quality Lithographers
Complete Service from Typesetting
to Four Color Process Printing

Post Office Box 99
1457 Montauk Highway
East Patchogue, N.Y. 11772

Phone: (516) 286-2943

Carmen's River Inne Your Hosts, Jean & George Olsen Main St., Yaphank 924-4445
"A Cozy Retreat For You" Closed Monday

Leisure dining featured in every connotation of the word.
Located in rural, historical Yaphank. Our cuisine is prepared for
you personally and individually. Sit back, enjoy a cocktail, some good
conversation, your enjoyment is our aim.

Specialties
CHANGE DAILY

Frogs Legs Provendale *Stuffed Breast of Quail*
Medley of Broiled Seafood
Sauteed Brook Trout
Rack of Lamb For Two

For Gateway
Ticket Holders
Special Service To
Get You To The
Theatre On Time





The Sun Land Manor

Complete Catering Facilities

Specializing in
Weddings, Engagements, Anniversaries
formerly the Better 'Ole Restaurant
416 SOUTH COUNTRY ROAD
BROOKHAVEN, N.Y.

MUSIC FROM THE 30s
TO THE PRESENT

FRIDAY NIGHTS

ENJOY AN EVENING OF
GRACIOUS DINING & DANCING
FOR DESSERT ENJOY OUR SINFULLY
DELICIOUS VIENNESE TABLE

With Music By:

**JOHNNY ROMAN
& COMPANY**

FEATURING A
5-PIECE ORCHESTRA

For Reservations
Call (516) 286-5885



HUGHES & STILL, INC.

All Forms of Insurance



475-6550

500 MEDFORD AVENUE
PATCHOGUE, NEW YORK 11772

SOUTH BAY



SEAFOOD

Open 7 Days

683 South Country Rd.

East Patchogue 758-6846

- Fresh Fish Daily
- Takeout Dinners
- Live Lobsters



bellbrook realty, inc.

gaspar c. celaurio, broker



Realtor

66 medford avenue
patchogue, n.y. 11772
(516) 289-4444

commercial industrial
and business
brokers

Pump Yourself Up At Northville Gasoline Corp.



We're neighbors
serving neighbors.



wlim

1580 AM
LONG ISLAND MUSIC

Glenn Miller, Tommy Dorsey, Benny Goodman,
Nat King Cole, Bing Crosby, Dinah Shore,
Jimmy Roselli, Perry Como, Jerry Vale,
Doris Day, and the Mills Bros. . . .

WHERE HAVE THEY GONE?

with
JACK ELLSWORTH
TO THE TOP OF THE DIAL

1580 AM



LONG ISLAND MUSIC BROADCASTING CORP.

Woodside Avenue, Patchogue, L.I. 11772
(516) 475-1580

Pat & Jim's



WELCOME
GATEWAY THEATRE-GOERS

Restaurant and Cocktail Lounge
645 Route 112, Patchogue

2 for 1 Luncheons
Daily Dinner Specials
Catering Large & Small Parties
Dine & Dance Every Friday & Saturday Till 3:00 A.M.

FOR RESERVATIONS
CALL
(516) 475-7755

IF YOU DRIVE IT... WE DISCOUNT IT!



PATCHOGUE  **FORD**

501 Route 112 - Patchogue, New York 11772 (516) 475-1133

**DO YOU RECEIVE OUR FREE
BROCHURE EACH YEAR?**

If not, fill out the form and leave it in the box office.
(Please Print)

Name _____

Address _____

Zip _____

BOX OFFICE HOURS
Monday 12:30 - 5:00 p.m.

Tues., Wed., Thurs., Sun.
12:30 - 10:00 p.m.

Friday & Saturday
10:00 a.m. - 10:00 p.m.

PHONE RESERVATIONS
EVERY DAY
12:30 p.m. - 10:00 p.m.
286-1133

Mailing Address: Box P, Bellport, New York 11713
Box Office closes at 5 p.m. on Tuesday, July 29, and August 19

You can have it all.



Clare Rose Inc.



South Country Inn

South Country Road
East Patchogue, N.Y. 11772

*Italian & Continental
Fine Dining
at Moderate Prices*

EARLY BIRD SPECIALS
Complete Dinners **\$9.95**
Tuesday - Friday 9 - 7

SUNDAYS
Italian Feast **\$9.95**
All You Can Eat

(516) 758-1919

*AFTER THE SHOW - Ask for the Captain's Platter Special
Complimentary Wine with Lunch and Dinner*

ISLAND GRILL

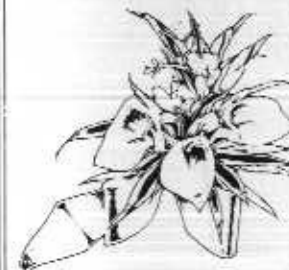
*Everything from
Excellent Coffee to a
Complete Delicious Meal
Convenient, Fast Service, Moderate Prices
Specialize In: Seafoods, Steaks, and Chops
Home Made Baked Goods*



Sunrise Highway, Phyllis Drive
Patchogue, New York 11772
(516) 475-2110

Diner Restaurant
Open 24 Hours

MAYER'S Greenhouse & Flower Cottage, Ltd.



"Original flower designs for every occasion"

- Wedding designs from the simple to the extravagant
- gourmet fruit baskets • dried & silk arrangements
- balloons • foliage plants • FTD & Teleflora

399 Medford Avenue, Patchogue, New York
Telephone: (516) 475-1779