

GATEWAY PLAYHOUSE

PLAYBILL

1989

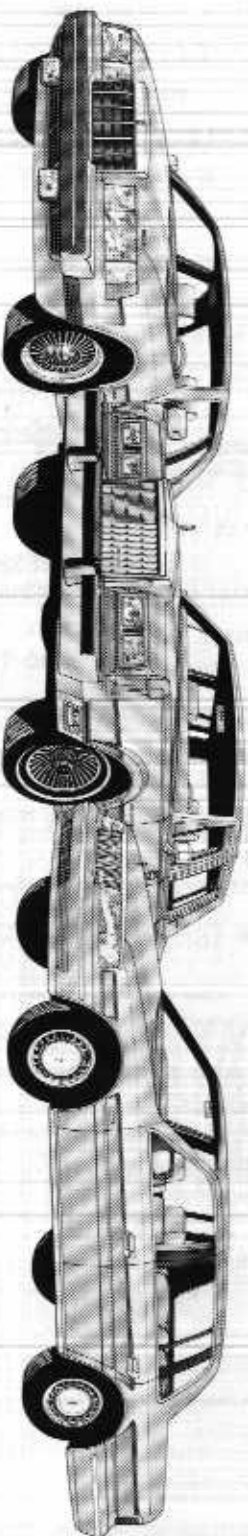
Beehive

THE '60's MUSICAL

S. W. A. K.



Sit Back and Enjoy What A
Luxury Car Should Be - World Class
Introducing Lincoln



1989 LINCOLN MARK VII

1989 LINCOLN TOWN CAR

1989 LINCOLN CONTINENTAL

#1 Selling Luxury Car on Long Island



**NORTH SHORE
LINCOLN MERCURY**

5316 NESCONSET HWY., PORT JEFFERSON STATION, N.Y. 11776
(516) 473-6900

Cabot's Florist



91 Medford Avenue - Patchogue

475-0408



Hine Grove Inn

On The Swan River



SUNDAY BRUNCH 12 NOON to 3:00 P.M.

Open Daily for Lunch
and Dinner at 11:30 a.m.
Saturday at 11:30 a.m.
Sunday at 12:00 p.m.
Open Late Friday and
Saturday Nights
Closed Tuesdays



Experience the
Sheer Pleasure of
a Lunch or
Dinner On Our
Umbrella Covered
Patio, Outside
Right on the Waterfront

Chapel Avenue and First Street
Patchogue, Long Island, New York
(516) 475-9843

Treasure Island Antiques

Corner of Sunset
and Montauk Highway
Westhampton

378 South Country Road
Brookhaven Hamlet, N.Y. 11719
516-286-8503

ALLAN AND ALLAN ARTS, LTD.
in association with
PAUL ALLAN and JOHN HODGE
present

Beehive

THE '60's MUSICAL
S. W. A. K.



created by
Larry Gallagher

starring

Leslie Alston	Mary Lou Barber	
Heidi Karol Johnson	Vanessa Jones	Jorinda Junius
Susan "Sam" Shaw	Jacqueline Stoudemire	

Scenic Design and
Technical Direction
MICHAEL BOYER

Costume Design
B.G. FITZGERALD

Lighting Design
JEFF B. BELLANTE

Musical Direction
CHERIE ROSEN

Stage Manager
ROSE OLIVITO

Wigs by
G.P. BRENNAN

Directed by
DOMINICK RUGGIERO

Choreographed by
CANDY DURKIN WILLIAMS

Originally produced on the New York Stage by Betmar a.k.a.
Betty Lee Hunt & Maria Christina Pucci and Charles Allen

Bellport CHOWDER HOUSE

AN EATING AND DRINKING TRADITION



FULL MENU

FULL BAR

Open Daily For Lunch and Dinner
Seven Days A Week

CHAMPAGNE BRUNCH SUNDAY NOON TILL 3 P.M.

Sunday - Thursday till 11:00 p.m. Friday & Saturday till Midnight

**SPECIALIZING IN FRESH LOCAL SEAFOOD
AT AFFORDABLE PRICES**

*Before and After the Show You'll Want to Meet and Eat At
THE CHOWDER HOUSE*

TAKEOUT

CATERING

19 Bellport Lane • Bellport Village • 286-2343

CAST OF CHARACTERS

(In alphabetical order)

Leslie	LESLIE ALSTON
Mary Lou	MARY LOU BARBER*
Heidi	HEIDI KAROL JOHNSON*
Vanessa	VANESSA JONES*
Jorinda	JORINDA JUNIUS*
Sammi	SUSAN "SAM" SHAW
Jacque	JACQUELINE STOUDEMIRE*

TECHNICAL STAFF

Technical Director	Michael Boyer
Assistant Technical Director	Jeff Drucker
Master Electrician	Kris Hassett
Carpenters	Shelby Caffrey, Todd Gajdusek, Kris Hassett, Joe Rudd, Eric Smith, Dino Trauger, Jim Kane, Anne Heed
Electricians	Cliff Farkouh, Mike Grimes, Mike Fields, Bob Valentine
Wardrobe Mistress	Barbara-Ann Mordente
Costume Construction	Lea Woods, Gregory Wilson, Barbara Mordente, Barbara-Ann Mordente

THE BAND

Musical Director/Piano	Cherie Rosen
Asst. Musical Director/Synthesizer	Kevin Finn
Drums	Don Yallech
Guitar	Tom Goslin
Bass	C.R. Melberg
Trumpet	Rich Holkheimer
Saxophone	Chales Socci



*Actors employed in this production are members of Actors' Equity Association, the union of Professional Actors and Stage Managers in the United States.

FIRE NOTICE: The exit indicated by a red light and sign nearest to the seat you occupy, is the shortest route to the outside. In the event of fire or other emergency, please do NOT run. WALK to that Exit. However, under normal circumstances, when leaving the Theatre, use the center rear exit. SMOKING is prohibited in the THEATRE, as required by a new Suffolk County NO SMOKING ordinance. Please do not smoke in any area designated "No Smoking." This renders the offenders subject to a fine or imprisonment or both.

THE BANK OF NEW YORK

LONG ISLAND REGION

BELLPORT BANKING OFFICE LOCATED AT:

32 Station Road
Bellport, New York 11713
Frances Aviano
Assistant Treasurer/Branch Manager
(516) 286-4200

Member FDIC 1986 The Bank of New York

Harbor Side

Incomparable Seafood/Steakhouse SPECIAL SUNDAY DINNERS

- Complete Luncheons
- Delicious Dinners
- Musical Entertainment Wednesday thru Saturday



Open 7 Days a Week At 11:30 a.m.



rating by Barbara Ruder, Newsday

Phyllis Drive at East Main Street
Patchogue, New York

MUSICAL NUMBERS

Act I

- LOCOMOTION (Little Eva) Ensemble
by Carole King
- THE NAME GAME (Shirley Ellis) Ensemble
by Elliston & Chase
- MY BOYFRIEND'S BACK (The Angels) Jorinda
by Feldman, Goldstein & Gottehrer
- SWEET TALKIN' GUY (Chiffons) Vanessa
by D. Morris & E. Greenberg
- ONE FINE DAY (Chiffons) Leslie
by C. King & G. Goffen
- I SOLD MY HEART TO THE JUNKMAN (Patti LaBelle) Jacque
by L. Rene & O. Rene
- ACADEMY AWARD (Patti LaBelle) Jacque
by C. Bolling
- WILL YOU STILL LOVE ME TOMORROW (Shirelles) Sammi
by Carole King
- REMEMBER (WALKING IN THE SAND) (Shangrilas) Mary Lou
by G. Marion
- I CAN NEVER GO HOME AGAIN (Shangrilas) Heidi
by G. Marion
- SUPREMES MEDLEY:
WHERE DID OUR LOVE GO? Vanessa, Leslie, Jacque
COME SEE ABOUT ME
I HEAR A SYMPHONY
by Holland, Dozier & Holland
- LESLIE GORE'S CHRISTMAS PARTY:
IT'S MY PARTY Heidi
by Gold, Gluck & Wiener
- I'M SORRY (Brenda Lee) Jorinda
by Self & Britten
- ROCKIN' AROUND THE CHRISTMAS TREE (Brenda Lee) Jorinda
by M. Marks
- I DREAM ABOUT FRANKIE (Annette Funicello) Mary Lou
by Hemric & Steiner
- SHE'S A FOOL (Leslie Gore) Leslie
by B. Raleigh & M. Barkan
- YOU DONT OWN ME (Leslie Gore) Heidi
by J. Madara & D. White
- JUDY'S TURN TO CRY (Leslie Gore) Mary Lou & Heidi
by B. Ross & E. Lewis
- WHERE THE BOYS ARE (Connie Francis) Jorinda
by Greenfield & Sedaka
- THE BEEHIVE DANCE Ensemble
by Claudia Brevis
- THE BEAT GOES ON (Sonny & Cher) Leslie
by Sonny Bono

Talent

The magic
that makes life
extraordinary.



**MARINE
MIDLAND
BANK**

Let's work it out together.

© 1989 Marine Midland Bank, N.A.

Member FDIC


DOWNTOWN (Petula Clark)	Mary Lou
by T. Hatch	
TO SIR WITH LOVE (LuLu)	Sammi
by D. Black & M. London	
WISHIN' AND HOPIN' (Dusty Springfield)	Heidi
by B. Bacherach & H. David	
DON'T SLEEP IN THE SUBWAY (Petula Clark)	Mary Lou
by T. Hatch	
YOU DON'T HAVE TO SAY YOU LOVE ME (Dusty Springfield)	Heidi
by Donaggio, Pallavicini, Wickman, Napier, Bell	

ACT II

TINA TURNER MEDLEY:	
A FOOL IN LOVE	Jacque
by Ike Turner	
RIVER DEEP MOUNTAIN HIGH	Vanessa
by Spector, Barry & Greenwich	
PROUD MARY	Jacque
by J.C. Fogerty	
SOCIETY'S CHILD	Heidi
by Janis Ian	
ARETHA FRANKLIN MEDLEY:	
RESPECT	Vanessa
by Otis Redding	
A NATURAL WOMAN/DO RIGHT WOMAN: DUET	Jacque & Vanessa
by Goffen, King & Wexler	
by D. Penn and C. Moman	
JANIS JOPLIN MEDLEY:	
PIECE OF MY HEART	Sammi
by Ragovoy & Berns	
TRY (JUST A LITTLE BIT HARDER)	Sammi
by Ragovoy & Taylor	
ME AND BOBBY MCGEE	Sammi
by K. Kristofferson & F. Foster	
MAKE YOUR OWN KIND OF MUSIC	Ensemble
by B. Mann & C. Well	
AQUARIUS/LET THE SUNSHINE IN (The Fifth Dimension)	Ensemble
by G. McDermott & J. Rado	

ACT III

TAKES PLACE AT

Patchogue Floral's Fantasyland 

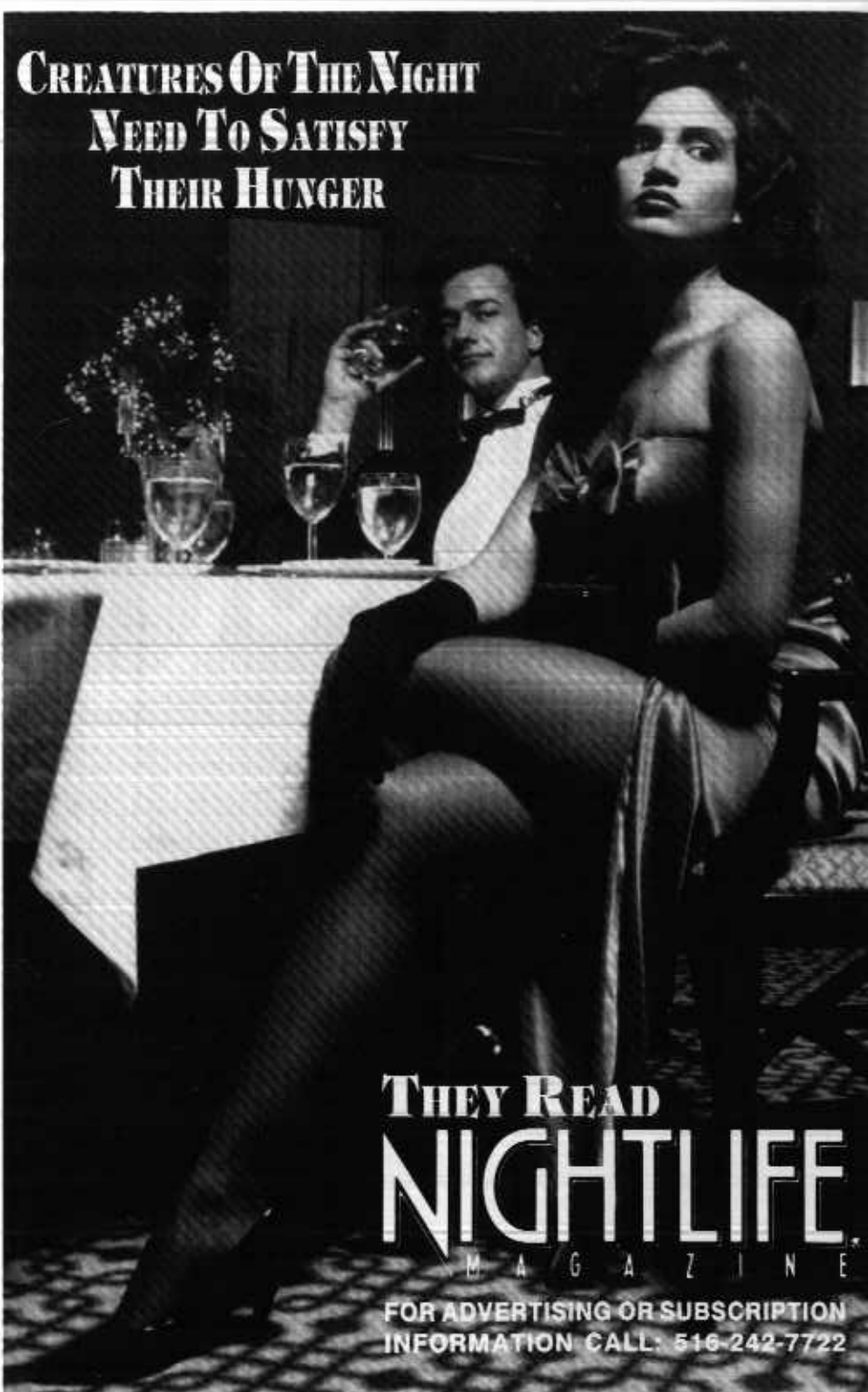
COME
BROWSE

LARGEST EMPORIUM CATERING TO
THE ESTHETIC PROCUROR OF UNUSUAL HOME DECOR —

Giftware - Art Crafts - Custom Permanent Arrangements

10 Robinson Avenue • East Patchogue • 475-2059

**CREATURES OF THE NIGHT
NEED TO SATISFY
THEIR HUNGER**



**THEY READ
NIGHTLIFE
MAGAZINE**

FOR ADVERTISING OR SUBSCRIPTION
INFORMATION CALL: 516-242-7722

wlim 1580 AM
LONG ISLAND MUSIC

Glenn Miller, Johnny Mathis, Benny Goodman,
Nat King Cole, Frank Sinatra, Dinah Shore,
Barbra Streisand, Perry Como, Doris Day,
and the Lettermen...

WHERE HAVE THEY GONE?

with
**JACK ELLSWORTH
TO THE TOP OF THE DIAL**

1580 AM Stereo



LONG ISLAND MUSIC BROADCASTING
CORP.

Woodside Avenue, Patchogue, L.I. 11772
(516) 475-1580

WRHD
SWING-STANDARDS-BIG BANDS
AM 1570

FOR THE BEST IN AMERICAN POPULAR MUSIC

Rock 'N Roll SUPPORTS THE ARTS

WRON
103.9FM

WHO'S WHO

LESLIE DENISE ALSTON (*Leslie*) Born and raised in the Bronx, Leslie started dancing at a young age. She attended Clark Center, the Alvin Ailey Dance Center and has a BFA from SUNY Purchase. She has danced with many New York dance companies. Her show credits include WEST SIDE STORY, the national and European tours of LITTLE SHOP OF HORRORS and most recently DREAMGIRLS. Leslie is very happy to be doing BEEHIVE. She wishes to thank God for strength and her family for support. Peace and Love.

MARY LOU BARBER (*Lou Lou*) recently enjoyed performing Audrey in a highly-acclaimed production of LITTLE SHOP OF HORRORS. Also to her credit are the national tours of SOPHISTICATED LADIES, and A CHORUS LINE, in which she performed her most challenging role - Cassie. Some of her favorite roles include Joan in DAMES AT SEA, Edythe Herbert in MY ONE AND ONLY and Lena Lamont in SINGING IN THE RAIN. Mary Lou has also been a featured performer on cruise ships in the Mediterranean and Caribbean Seas, and in several industrial shows in New York City. It's been eight years since she left her job as a medical laboratory technician in her home town of Mt. Holly, New Jersey, to pursue her first love, the theatre. She was last seen in the starring role of Peggy Sawyer in 42ND STREET both at Gateway Playhouse and in the international tour. She sends her love to Mom and her family and thanks them for their undying support.

HEIDI KAROL JOHNSON (*Heidi*) is happy to return to Gateway Playhouse where she first started her career performing the roles of Chairy in BARNUM, Doatsie Mae in BEST LITTLE WHOREHOUSE..., and Lily in ANNIE. She has done work regionally, toured nationally in BIG RIVER and A CHORUS LINE, and appeared Off-Broadway at Manhattan Theatre Club. She's like to thank her family back in Brooklyn for their constant love and support.

VANESSA A. JONES (*Vanessa*) was seen last year as Michelle in the Gateway Playhouse production of DREAMGIRLS. When this production traveled to Sarasota, Florida she assumed the lead role of Deena Jones. Most recently she toured with Motown recording artist Gerald Alston, in Japan and Jamaica. She also completed the "Thanks For My Child" tour with CBS recording artist Cheryl "Pepili" Riley. Ms. Jones' acting credits include Effie White in the Downtown Cabaret Theatre production of DREAMGIRLS, Lutiebelle in a national tour of PURLIE with Daedalus Productions and Lena Home and Sarah Vaughn in the Off-Broadway musical MAMA I WANT TO SING. Vanessa would like to dedicate her performance to her family and would like to

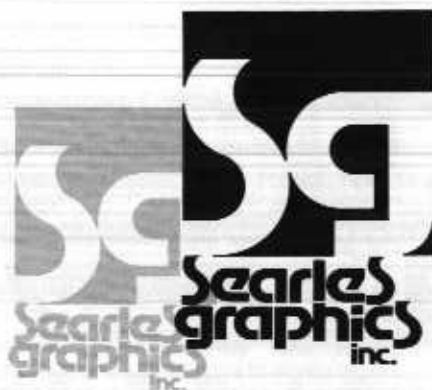
acknowledge God from where all her strengths and talents come. Thanks Joy.

JORINDA JUNIUS (*Jorinda*) comes back to us after recently finishing the international tour of 42ND STREET and a short run here at Gateway, playing the role of Anytime Annie. Another national tour credit is the role of Zaneeta in THE MUSIC MAN. She has also been seen up and down the East Coast in regional theatres in such roles as Val in A CHORUS LINE, Peggy Sawyer in 42ND STREET, Luisa in THE FANTASTICKS and Babe in CRIMES OF THE HEART, to name only a few. She has also appeared in NBC's ANOTHER WORLD. Originally from New Orleans, Jorinda received her B.A. in Communications from Loyola University of the South.

SUSAN "SAM" SHAW (*Sammie*) Sam has a broad range of experience ranging from performing to choreography. As a choreographer she has had her work seen in theatres across the country in shows such as GODSPELL, THE RUNAWAY, PIPPIN and CHICAGO. Her most recent credit includes choreographing BIG RIVER at Gateway Playhouse this past July. Also to her credit are the national tour of SOPHISTICATED LADIES and the successful international tour of 42ND STREET.

JACQUELINE STOUDEMIRE (*Jacqui*) is proud to make her first appearance at the Gateway Playhouse this season. Jacqueline started her career at the age of four, and has continued to appear in such musicals as LITTLE SHOP OF HORRORS, BARNUM, WORKING and the National Australian production of AINT MISBEHAVIN'. Jacqueline is also an accomplished composer/songwriter, and she is well known in the Florida, New York and St. Louis Night Club Circuit. Jacqueline would like to thank God for the gift of life, love, and voice, and thank Mom and Papu for everything!

MICHAEL BOYER (*Set Designer/Technical Director*) has an M.A. Degree in technical theatre from Western Illinois University. He has designed over 150 productions for off-Broadway, community theatre, summerstock, university and amphitheater productions, ranging from MUSIC MAN to MARAT/SADE. Touring productions include a United States tour of MAN OF LA MANCHA, and SOPHISTICATED LADIES, and internationally he has designed productions of WHO'S AFRAID OF VIRGINIA WOLF and CAT ON A HOT TIN ROOF which played an extended run at the Regina Theatre in Stockholm, Sweden. This past year he was resident designer at the Tennessee Williams Fine Arts Center in Key West, which included productions of THE GLASS MENAGERIE and WORKING.

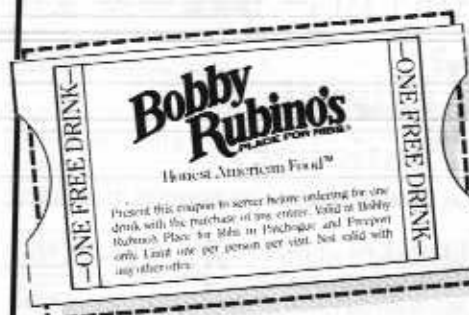


Quality Lithographers

complete service from typesetting to four color process printing

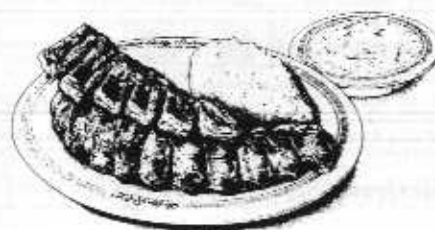
1457 Montauk Highway
East Patchogue, New York
(516) 286-2943

Free ticket



to the tastiest act in town:

Before or after the show, indulge in our delicious array of entrees - like barbecued ribs and chicken, succulent shrimp and seafood or sizzling steaks and burgers. You'll find they're all a great act to swallow.



121 E. Sunrise Highway
(just east of Rt. 112 & Sunrise Hwy.)
Patchogue, 447-5600
500 Atlantic Avenue
Freeport, 546-8500



YOUR LOCAL MERCHANT
with NATIONAL CHAIN
BUYING POWER!

OPEN 7 DAYS

SEE US for all your
HARDWARE NEEDS

- Hand Tools
- Power Tools
- Plumbing
- Electrical
- Gifts
- Housewares
- Paint
- Baking
- Bath Shop
- Garden Shop

475-7131

406 East Main St., Patchogue
opp. Plaza Theatre

Gateway's Front Lawn Is Watered By

SUFFOLK SPRINKLER SYSTEMS INC.

Automatic Lawn Systems
Installed in a Professional Manner
No Lawn Damage



289-6006

DON'T DELAY CALL TODAY FOR FREE ESTIMATE
We Welcome Repairs, No Job Too Small

2 Boston Avenue
Medford

RESIDENTIAL
COMMERCIAL

Licensed by the Suffolk County Consumer Affairs #1599-HIC

Call for a quote.

Take a minute and compare Allstate for value. You may find we can save you some money on your home or auto insurance. Call me today... it'll only take a minute.



Anne Springhorn
117S. Country Rd.
Bellport, NY 11713
286-2026

Allstate

Allstate Insurance Company
Northbrook, IL



Brown's Jeep Eagle
Sales and Service
152 South Country Road
Bellport, New York 11713
758-JEEP

Bellport Stationery (516) 286-4675
132 Main Street • Bellport, N.Y. 11713


DWIGHT M. TRUJILLO
The Village Silversmith
• CUSTOM JEWELER • SILVERSMITH • GOLDSMITH
• DIAMOND SETTER • JEWELRY REPAIRS
149 MAIN STREET BELLPORT, N.Y. 11718 (516) 986-1660


David N. Ebner
Artist Craftsman 
Signed Edition Furniture Handcrafted in the Manner
of the Great French Ebenistes
12 Bell Street Home (516) 286-9340
Bellport, N.Y. 11713 Studio (516) 286-4523

 7 Bellport Lane
Bellport
Town & Country Clothes

VILLAGE CHIROPRACTIC
At Bellport
Dr. Martin J. Santillo D.C.
Director
31A Station Road, Bellport, New York 11713
516-286-9410

ROBERT AUGUST WILLIAM HEINS, AIA
Architect
10 Peat Hole Lane
Bellport, New York 11713
516-286-1588

 **NOW OPEN** TEL. 286-3830
BELLPORT PAINT & WALLPAPER, INC.
145 SOUTH COUNTRY ROAD
BELLPORT, NEW YORK 11713
CABOT STAINS OLYMPIC PAINT & STAINS COMPLETE PAINT & WALLPAPER SUPPLIES

 **Bayberry Travel**
143A South Country Road
Bellport, New York 11713
(516) 286-4500

EILEEN GREEN REALTY CORP.
Formerly
Wallace/Intemann Ltd. REAL ESTATE
153 South Country Road, Bellport Village, New York 11713
Eileen Green, Broker (516) 286-3366

Don't Throw That Ticket Stub Away!

Cash it in and Save
Hundreds of \$\$\$\$
on



BELLPORT TRAVEL
12 Station Road
Bellport, N.Y. 11713

When it comes to travel,
Bellport Travel leads the way. 

WHO'S WHO

B.E. FITZGERALD (*Costume Designer*) is happy to return to Gateway for BEEHIVE, having opened this season with DROOD both as costumer and actor. His costumes have graced stages from Canada to Florida in shows that run the gamut from CAN CAN to MEDEA on such diverse bodies as Hans Conried, Monique Van Vooren, Dorothy Collins, Shelly Berman, and (brief though it was) Miss Sally Rand. He is presently Costume Designer of Coastal Theatre Productions of Florida where this season he will be clothing Joseph in his DREAMCOAT, the pirates and policemen of PENZANCE, and the urchins of ANNIE... (Sandy is on his own!)

JEFF BELLANTE (*Lighting Designer*) has been spending his summers at the Gateway since 1980 when he first worked as a technician on DRACULA. After lighting GEMINI in 1983 he has become Gateway's lighting designer in residence. His favorite shows include NINE, EVITA, BEATLEMANIA, BARNUM, DREAMGIRLS and of course THE WIZARD OF OZ. During the off-season, Jeff works in the theatre in New York City. Credits include PACIFIC OVERTURES, OIL CITY, GROUCHO, and STEEL MAGNOLIAS. Most recently Jeff has been lighting and stage managing for industrial shows all over the country. His clients include Apple Computers, NYNEX, IBM and Elizabeth Arden. Jeff is happy to return to Gateway for his 10th season and likes to call Gateway his home away from home. (It's a little known fact that Jeff has no middle initial.)

ROSE OLIVITO (*Stage Manager*) This is Rose's first season at Gateway having stage managed BIG RIVER and BROADWAY BOUND. She has stage managed productions in New York City some of which include LEATHER HEART at the American Theatre for Actors, A NEW MUSICAL TO BENEFIT THE DEFICIT at the Lee Strasberg Theatre Institute, and TAKING STEPS for the Washington Square Players. Rose has also worked at Equity Library Theatre, Pan Asian Repertory Theatre, New Dramatists, and the Performing Arts Program of the Children's Aid Society.

CHERIE ROSEN (*Musical Director*) has been at Gateway since 1983 and has musical directed over 25 productions on the main-stage. Some of the more recent productions that she has done include LA CAGE AUX FOLLES, DREAMGIRLS, LITTLE SHOP, MY ONE AND ONLY... When not at Gateway, Cherie has been musical director for National Tours of A CHORUS LINE, MAN OF LA MANCHA, MUSIC MAN, and most recently 42ND STREET. Currently she lives in Manhattan where she just completed her latest production, which has

received rave reviews - the birth of her first child Daniel Alexander. Immediately after Gateway's season, Cherie will be musical director of the National Tour of MY FAIR LADY

KEVIN FRANCIS FINN (*Assistant Musical Director*) just completed musical directing BIG RIVER at Gateway. Prior to BIG RIVER, Kevin musical directed the national tour of DREAMGIRLS. Kevin has conducted at Darien and at An Evening Dinner Theater, Candlewood Playhouse, and Theatre-By-The-Sea. A 1983 graduate of the Hartt School of Music, Kevin also attended the High School of Performing Arts in New York City. He now resides in Manhattan and maintains a full schedule of composing and accompanying.

CANDY DURKIN WILLIAMS (*Choreographer*) appeared on Broadway in SUGAR BABIES with Ann Miller and Mickey Rooney as well as the 1st National Tour with Carol Channing and Bobby Morse. She also appeared in THE ROCKY HORROR SHOW at the Westbury Music Fair. Some of her favorite roles have been Googie Gomez in the RITZ, Zaneeta in THE MUSIC MAN, Ellie in SHOWBOAT and Helen in IRENE. At Gateway she was seen in JESUS CHRIST SUPERSTAR, WEST SIDE STORY and HAIR. Candy owns and operates a dance studio in Baldwin. She would like to thank her husband Bobby and her favorite production to date her 4 year old twins Ryan and Christopher.

DOM RUGGIERO (*Director*) Dom has directed numerous productions across the country, in Australia, England and Canada. Audiences at Gateway will remember his successful production of LITTLE SHOP OF HORRORS last season. Some of his recent New York productions are TAKING STEPS, COMPANY WORKING, the New York City premiere of Sandheim's musical THE FROGS, and SCANDAL, an original musical based on Sheridan's classic, for the Washington Square Players. With his own production company BFR Productions, Dom has created and directed the showcase productions of SUBWAY, HOT SUMMER KNIGHTS, (a musical based on the Guardian Angels) and numerous children's musicals. Dom recently directed BIG RIVER at Gateway and The Golden Apple Dinner Theatre in Sarasota, Florida. He is not unknown to Florida audiences having spent 2 years in Orlando, St. Petersburg and Daytona directing LITTLE SHOP OF HORROR, SAME TIME NEXT YEAR and PUMP BOYS AND DINETTES for Seaside Music Theatre, and various productions at the Celebrity Dinner Theatre. Dom is scheduled to fly to Australia to direct the Premiere Production of PUMP BOYS in 1990.

GATEWAY PLAYHOUSE STAFF

Executive Producers	Ruth and Stan Allen
Associate Producers	Paul Allan, John Hodge
Company Manager	Laura Lyons
Director	Dominick Ruggiero
Stage Manager	Rose Olivito
Musical Director	Cherie Rosen
Technical Director	Michael Boyer
Lighting Designer	Jeff Bellante
Children's Theatre Director	Joy Vandervort
Assistant Musical Director	Kevin Finn
Assistant Technical Director	Jeff Drucker
Costume Designer	B.G. Fitzgerald
Technical Advisor	Jim Kane
Box Office Manager	Nancy Kana
Box Office Staff	Morrow Kerlins, Stephanie Spitznagel, Janice Spitznagel, Matt Wasnok, Jennifer Herringer
Concession	Mil Kana, Andy Gergel
House Staff	Mark Landahl
Production Photographer	Mil Kana

OLD INLET INN



108 South Country Road
Bellport, Long Island

"Cozy, Charming and Imaginative" by Joanne Starkey
New York Times • February 7, 1988

One of the oldest, finest restaurants in Suffolk County. Serving continental cuisine in an elegant old Victorian home atmosphere. Placed on the National Register of Historic Places July 4, 1980.

Ideal intimate stop before or after the show at Gateway.

Patio for drinks and dining.

Dinner: Tuesday - Sunday • (Closed Monday)

Reservations suggested — The favor of a jacket is requested of all gentlemen.

(516) 286-2650

(516) 475-1790 -1791
FAX (516) 475-1807

Emergency Boarding Service
Call 289-1524

**PATCHOGUE
PLATE GLASS CO.
INC.**

GLASS—MIRRORS—PLEXIGLASS—STORE FRONTS
AUTO GLASS—INSURANCE CLAIMS

RON HENTHORNE
Manager

64 West Main Street
Patchogue, N.Y. 11772

PATCHOGUE PICTURE FRAME

Custom Framing ■ Fine Art ■ Prints & Posters

64 West Main Street
Patchogue, New York 11772

Sue Henthorne

(516) 475-1790

All Playhouse Plumbing Done
By

**Beach Plumbing &
Heating, Inc.**

Phone 281-4396
John Villano

Alterations Repairs New Work

STAGE DOOR Dance SCHOOL OF

BALLET • TAP • JAZZ
AEROBICS • BALLROOM DANCING
Pre-School Thru Adults

DIANE GIATTINO
Member of Brookhaven
Theater Dance Guild

25 PATCHOGUE YAPHANK ROAD, EAST PATCHOGUE
(across from Caldors)

654-8858

Therm A Trol
Inc.



AIR CONDITIONING - HEATING

Carrier

120 NORTH DIVISION AVENUE
BLUE POINT, NEW YORK 11715

(516) EM 3-6600

WALK^{FM} 97.5
AM 1370

RENTALS

- COMPACT
- STANDARD
- LUXURY
- PASSENGER VANS
- TRUCKS

LEASING

- ALL MAKES & MODELS
- CUSTOM PAYMENT PLANS
- NO DOWN PAYMENT
- LOW MONTHLY PAYMENTS
- LONG & SHORT TERMS

PATCHOGUE Executive Offices ... 475-6656

**ANTHONY
AUTO GROUP**

Established 1969
Locations Throughout
Nassau & Suffolk

125 Sunrise Highway
Patchogue, Long Island 11772

ANTHONY AUTO RENTAL, INC.

RELIABLE CAR RENTALS

RELIABLE AUTO LEASING

RYDER
TRUCK RENTALS



ROYAL OAK

Diner - Restaurant

Station Road and Sunrise Highway
Bellport, New York 11713

HOURS: 6:00 A.M. - 2:00 A.M.
SEVEN DAYS A WEEK

TEL. (516) 286-5757

MAYER'S
Flower cottage

YOUR FULL SERVICE FLOWER CENTER

399 Medford Avenue
Patchogue, N.Y.
475-1779

3845 Vets Memorial Hwy.
Ronkonkoma (at Holiday Inn)
585-7770

TALL & BIG • TALL & BIG • TALL & BIG

PACESETTER
TALL & BIG

Regular Bigs and Longs, Extra Longs, Athletic, Party and Party Shorts Are Our Specialty

SANS A BELT
The world's most comfortable slacks!
Featuring the original patented triple stretch waistband that's guaranteed for the life of the garment. Experience the amazing comfort and the slim trim feeling.

THE DEPARTMENT STORE FOR THE TALL & BIG MAN

57 E. MAIN ST. PATCHOGUE, N.Y.	255 OLD COUNTRY RD. HICKSVILLE, N.Y.	128 W. JERICO TPKE HUNTINGTON STA., NY
289-5780	935-5783	673-5788

Next to Chucky's Rest. 1 Mile E. of Wantagh Pkwy. 1 Block W. of Rte. 110
 Mon. Tues. Wed. Sat. Mon. Tues. Wed. Thurs. Sat. Next to Fireside Deli
 9:30 - 5:30 10:00 - 8:00 Mon. Tues. Wed.
 Thurs. Fri. 9:30-9:00 Fri. 10:00-9:00 Thurs. Sat.
 Sun. 11:00-4:00 Sun. 12:00-9:00 10:00 - 6:00
 Fri. 10:00-9:00

Felice's
OF PATCHOGUE

"A Name Worth Looking Into"

In addition to our fine catering facility in Patchogue

We Can Cater Your Company, Office, or Social Event at Your Location

Family Owned and Operated For Over 50 Years

475-1300

322 Montauk Highway, Patchogue

gary d. cannella associates
architects planners



gary d. cannella
architect

- 55 knickerbocker avenue •
- bohemia, new york 11716 •
- 516-563-5100 •

Tel: 286-0395

LYONS
FUEL OIL CO., INC.

23 Station Road, Bellport, N.Y.

WELCOME GATEWAY THEATREGOERS!

Pat & Jim's 

Restaurant & Cocktail Lounge

2 For 1 Lunch \$7.95

- Early Bird Menu
- Daily Dinner Specials
- Late Night Menu

LIVE MUSIC
Th., Fri., Sat.

CATERING
LARGE/SMALL PARTIES

645 Route 112
Patchogue

475-7755

CHILDREN'S THEATRE

Every Friday and Saturday morning
at 10:30 a.m.

Bring The Kids To See The



WIZARD OF OZ

August 18, 19
25 and 26

All seats are first come - first served and seats are attractively priced at \$4.00 each.

Camps Come On Friday — Best Seats Available Saturday

Shows Subject To Change Without Notice

BEACON FEDERAL SAVINGS BANK



112 So. Country Road, Bellport, NY 286-2800

1. HIGH INTEREST RATES ON ALL SAVINGS ACCOUNTS
2. LOWEST RATES ON HOME IMPROVEMENT LOANS
3. N.O.W. CHECKING ACCOUNTS
4. TRAVELERS CHEQUES
5. FULL SAFE DEPOSIT BOX FACILITIES
6. SAVINGS INSURED - MEMBER: FSLIC
7. LOW COST LIFE AND MORTGAGE INSURANCE

Other Offices:

BALDWIN BELLMORE HICKSVILLE OCEANSIDE GARDEN CITY SO

BRADIE MOWER SERVICE

Lawn • Garden • Construction Equipment • Rentals

"We Service What We Sell"

Snapper • Yazoo • Lawn-Boy • Jacobsen • Tanaka

1543 Montauk Highway • Bellport, New York 11713
(516) 286-9550



COLEMAN CESSPOOL SERVICE, INC. SCHWAB's Cesspool Cleaning

PRECAST CESSPOOLS INSTALLED

A. COLEMAN

Phone: (516) 475-1733 878-2010

Locally Owned and Operated For Over 50 Years

1 CHAPEL AVENUE
EAST PATCHOGUE, NEW YORK 11772

RELIABLE SERVICE



You work too
hard to paint with
anything less.

ON SALE
NOW

Bellport
NY
11713

FOX'S PAINT
286-7150

FOX'S HARDWARE
286-0510

NEW
VISIONS

UNISEX HAIR DESIGNERS
full service hair salon

Create the Look
that Adds
Dimension and Style
to Your Active Life



155 South Country Rd., Bellport, N.Y. 11772 • (516) 286-0216

THE LANDMARK

Great
People



Fun
Food

CAFE

Sunday Brunch 7:00 a.m. to 3:00 p.m.

OPEN MONDAY
THRU FRIDAY
11:00 A.M.
UNTIL 1:00 A.M.

SATURDAY & SUNDAY
7:00 A.M. TILL 1:00 A.M.



by Ashley Nicole

654-8160

DINE IN ONE
OF OUR GLASS
ATRIUMS
SURROUNDED
BY BEAUTIFUL
FLOWERS & PLANTS

◆ ROUTE 112 MEDFORD ◆

1/4 mile south of LIE exit 64

◆ PRESENT TICKET OR PROGRAM FOR COMPLIMENTARY
GLASS OF WINE ◆



Shore Manor

**GREAT FOOD,
COMFORTABLE ATMOSPHERE,
CASUAL ATTIRE**

*A favorite spot
for Gateway Performers*

*JOIN US BEFORE OR AFTER
THE THEATRE
WE'RE OPEN LATE*

**Dinner in the Captain's Cabin or
Late Supper
and Spirits in the Tap Room**

SPECIAL CATERING
FOR SMALL PARTIES

**1443 Montauk Highway
Mastic • 281-9872**

SPERRY
TOP-SIDER

California
CAMI'Z



120 South Country Road
Bellport, New York
286-2074



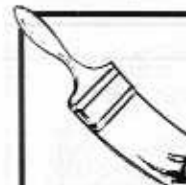
HUGHES & STILL, INC.

All Forms of Insurance



475-6550

500 MEDFORD AVENUE
PATCHOGUE, NEW YORK 11772



516-286-3947

DOUG HARROW

EXTERIOR & INTERIOR PAINTING
17 years experience

23 Circuit Road, Bellport, N.Y. 11713

South Country Inn

South Country Road
East Patchogue, N.Y. 11772
(Approx. 1 mile west of the Gateway Playhouse)

*for a complete night
of pleasure, join us
at South Country Inn
for dinner before theatre*

**(516)
758-1919**



open for
LUNCH
&
DINNER

also enjoy our
cocktail
lounge
&
fine
desserts
after theatre

*Italian & Continental
Fine Dining
at Moderate Prices*



**FAMOUS FOR OUR
SPECIALLY TRIMMED MEATS
AND
ITALIAN SAUSAGE MADE
DAILY WHILE YOU SHOP.**

ACCOUNTING OFFICE
1770 Middle Country Road
Centereach, NY 11720
981-1989

BRENTWOOD 725 Commack Road 968-8330	EAST ISLIP 15 West Main Street 277-3408
CENTEREACH 1764 Middle Country Road 981-1872	HOLBROOK 960 Patchogue-Holbrook Road 981-3877
COMMACK 134 Commack Road 462-6515	LINDENHURST 660 Wellwood Avenue 226-9634
DEER PARK Bay Shore Road & Deer Park Avenue 867-8633	MEDFORD 1800 Route 112 475-0719

PORT JEFFERSON
500 Jefferson Plaza
Route 112
473-5030

SPICY'S™ BBQ

EAT IN OR TAKE OUT

Featuring
**OUR FAMOUS
CHICKEN WINGS
WITH SPICY SAUCE!**

2 GREAT LOCATIONS
TO SERVE YOU

BELLPORT & RIVERHEAD

HOURS

Mon. - Thurs. 11 a.m. - 9 p.m.
Friday 11 a.m. - 10 p.m.
Saturday Noon - 10 p.m.
Sunday - Closed

286-2755

501 STATION RD., BELLPORT, N.Y.



Mid-island Lumber & Supply Co., Inc.

415 Roanoke Avenue, Riverhead, New York 11901

(516) 727-2430



bellbrook realty, inc.



COMMERCIAL, INDUSTRIAL
66 Medford Avenue
Patchogue, N.Y. 11772
289-4444

RESIDENTIAL
440 South Country Road
East Patchogue, N.Y. 11772
289-4000

Thomas M. Neppell & Sons, Inc.

GENERAL INSURANCE



THOMAS M. NEPELL, JR.
PRESIDENT

78 NEIGHBORHOOD ROAD
MASTIC BEACH, NEW YORK 11951
281-5877 - 78 - 79 - 94

THE INN AT MEDFORD

Come to Long Island's Friendliest Inn
Your Home away from Home

- Refurbished, Spacious Rooms
- 25" Remote Control TV
- VCRs in every Room & Movie Rentals available
- Complimentary Continental Breakfast daily
- Outdoor Pool
- Lounge with Live Entertainment Fri & Sat
- Banquet & Meeting Facilities for up to 200 Guests
- Kosher Catering available

I.I.E. exit 64 & Rte. 112
Medford
654-3000

Gabrielle Hartmann
Innkeeper



Our Place Cafe



117D. S. COUNTRY RD.
BELLPORT, N.Y.

"Make Our Place
Your Place"

EAT IN • TAKE OUT
286-2627

BELLPORT LIQUOR STORE

(516) 286-0316

RON and SANDY HERZOG

129 Main Street Bellport, New York 11713



Bellport Delicatessen

Catering is our Specialty

124 Main Street, Bellport
(516) 286-0444

Open 6:00 a.m. - 10:00 p.m. 7 Days a Week
Open for Breakfast and Lunch Specials



VILLAGE PHARMACY

125 Main Street
Bellport, New York 11713

(516) 286-2244

Cards, Gifts &
Fine Fragrances

BARRY A. SINGER



470 South Country Road
E. Patchogue, N.Y. 11772
(516) 475-0494

also
Complete Landscape
Design & Construction

since 1898

ROE agency inc.

▲ INSURANCE
REAL ESTATE ▲

125 EAST MAIN STREET :: Patchogue, N.Y. (516) 475-4000



Clare Rose Inc.

516-286-1681 CATERING AVAILABLE

LATE NIGHT AFTER SHOW MENU

BILL KIRK'S BELLPORT KITCHEN

A LA CARTE LUNCHEON & DINNER

William Kirk 159 S. Country Rd.
Proprietor/ Chef Bellport, N.Y. 11713

OLD PURCHASE PROPERTIES

MARK PETHERAM

Licensed Real Estate Broker

122 South Country Road
Bellport, New York 11713

(516) 286-2424



Your Hosts, Jean & George Olsen Main St., Yaphank 924-4445
"A Cozy Retreat For You" Closed Monday

Leisure dining featured in every connotation of the word.
Located in rural, historic Yaphank. Our cuisine is prepared for
you personally and individually. Sit back, enjoy a cocktail, some good
conversation; your enjoyment is our aim.

Specialties
CHANGE DAILY

Stuffed Brace of Quail • Medley of Broiled Seafood
Rack of Lamb For Two

OUTDOOR TENT PARTIES • GARDEN PARTIES

For Gateway
Ticket Holders
Special Service To
Get You To The
Theatre On Time



**ISLAND GRILL
DINER RESTAURANT**

10% SENIOR
CITIZEN DISCOUNT

Sunrise Highway, Phyllis Drive
Patchogue, New York 11772
(516) 475-2110

*AFTER THE SHOW - Ask for the Captain's Platter Special
Complimentary Wine with Lunch and Dinner
Everything from
Excellent Coffee to a
Complete Delicious Meal
Convenient, Fast Service, Moderate Prices
Specialize In: Seafoods, Steaks, and Chops
Home Made Baked Goods*



Open 24 Hours
Serving Breakfast, Lunch & Dinner

WALLEN'S IGA MARKET

MAIN STREET BELLPORT, N.Y.

QUALITY FOOD - IN A FRIENDLY
NEIGHBORHOOD MARKET

HOURS:
8-7 p.m. - Mon. - Thurs. 8-6 p.m. - Saturday
8-8 p.m. - Friday 8-1 p.m. - Sunday

FULL LINE OF:
Choice Meats & Poultry
Groceries
Produce & Dairy

PIER 44 RESTAURANT

444 Fire Island Ave.
Babylon, N.Y. 11702
phone # 661-5999



**CLAM &
OYSTER BAR**

217 E. Main Street
Babylon, N.Y. 11702
phone # 587-0159

FINEST IN FRESH SEAFOOD

PIER 44 EAST

2647 Montauk Hwy.
Brookhaven, N.Y. 11719
phone # 286-6311

OPEN 7 DAYS A WEEK!!

**ALL COUNTY
Home Security Systems**

Residential • Commercial



WIRELESS

- Burglar Alarms
- Heat Detectors
- Fire
- Central Station
- Freeze Alert
- Medical Alert

**FREE
ESTIMATES**

Authorized Distributor For
Dynamark • AllGuard
Safety Security Products

(516) 286-8330
All County Home Security Systems
680 South Country Road
East Patchogue, New York 11772

**DO YOU RECEIVE OUR FREE
BROCHURE EACH YEAR?**

If not, fill out the form and leave it in the box office.
(Please Print)

Name _____

Address _____

Zip _____

BOX OFFICE HOURS

Monday 12:30 - 5:00 p.m.

Tues., Wed., Thurs., Sun.
12:30 - 10:00 p.m.

Friday and Saturday
10:00 a.m. - 10:00 p.m.

**PHONE RESERVATIONS
EVERY DAY**

12:30 p.m. - 10:00 p.m.
286-1133

Mailing Address: Box P, Bellport, New York 11713

Konica
ROYAL COPIERS

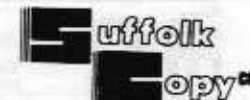
AUTHORIZED DEALER

COPIERS • FAX

SUFFOLK COPY CO.

1555 LOCUST AVE.
BOHEMIA, N.Y. 11716
(516) 563-8203

RAY CINTRON
Sales Consultant



PRECISION CYLINDER HEAD SVCE INC



HIGH PERFORMANCE
PARTS

Cylinder Heads/
Engine Specialists

Standard Valve Jobs to Blue Printed Racing Heads
1420-C Church St Bohemia Marine Street
563-8629

Bayport Flower Houses, Inc.

940 Montauk Highway
Bayport, Long Island, New York 11705
472-0014
Since 1932



Center Moriches Paper Co., Inc.

Wholesale Distributors

26 Frowein Road • P.O. Box 1217
Center Moriches, New York 11934
(516) 878-1200

OFF BROADWAY INN



Continental Cuisine
333 Old Montauk Hwy
Off Broadway, Sayville, NY
563-3999

OPEN: Tues.-Sat. 5-10pm, Sun. 1-9pm,
Closed Mon.