

PHYLLIS GESSLER (*Musical Director*) is a familiar face at Gateway. Over the last four years, she has music directed our LA CAGE AUX FOLLES, DROOD, INTO THE WOODS and CAMELOT, and was a synth player for our SONG & DANCE, both here and on a national tour. Last winter she music directed our production of SOUND OF MUSIC that went to the Far East. She lives in Sarasota, Florida where she can often be found at the Golden Apple Dinner Theatre. She's had jobs as varied as playing rehearsals and performances of the Ringling Brothers and Barnum and Bailey Circus and working as a pianist for Second City in Chicago.

MICHAEL BOYER (*Resident Designer/Technical Director*) has designed over 150 productions for off-Broadway, community theater, summerstock, university and amphitheater productions, ranging from THE MUSIC MAN to MARAT/SADE. Touring productions include a United States tour of MAN OF LA MANCHA, AINT MISBEHAVIN', SONG & DANCE, and SOPHISTICATED LADIES, and internationally he has designed productions of WHO'S AFRAID OF VIRGINIA WOLFE and CAT ON A HOT TIN ROOF which played an extended run at the Regina Theatre in Stockholm, Sweden. This is Michael's 10th season at Gateway. When not designing here, he is resident designer/technical director at the Tennessee Williams Fine Arts Center in Key West.

JOSE M. RIVERA (*Costume Designer*) making his Gateway Playhouse debut, is currently represented by the long running A CHORUS LINE at the Claridge Hotel and Casino in Atlantic City. He's designed, assisted, coordinated and consulted on costumes for over 100 productions for such theatres as: The Paper Mill Playhouse, Pennsylvania Stage Company, Seattle 5th Ave. Theatre, Queens Theatre in the Park, Opera at Florham, The Hampton Playhouse, and Theatre by the Sea. Recent credits include, THE VAGABOND STARS, RIGOLETTO, THEY'RE PLAYING OUR SONG, LA TRAVIATA, RUMORS, WEST SIDE STORY, CABARET, MAME, PIPPIN and the world premiere of a new musical by Ivan Menchall, SMILING THROUGH.

GATEWAY PLAYHOUSE STAFF

Executive Producers	Ruth and Stan Allan
Associate Producers	Paul Allan, John Hodge
General Manager	Gale Edwards
Director	Frank Ferrante
Musical Director	Phyllis Gessler
Stage Manager	Dom Ruggiero
Scenic Designer/Technical Director	Michael Boyer
Costume Designer	Jose M. Rivera
Lighting Designer	Kim Hanson
Wig Designer	Paul Germano
Assistant Technical Director	James Kane
Sound	Mark Clark
Master Electrician	Kris Hassett
Scenic Artist	Chris Mealey
Propmaster	Kelli Christensen
Wardrobe Supervisor	Jennifer Griggs
Wardrobe	Melissa Moody, Scott M. Westervelt
Carpenters	Mike Carey, Anne Heed, Tyson Goldstein, Mike Martinez, Joe Rudd, Eric Smith
Box Office Manager	Nancy Kana
Box Office Staff	Gladys Hawkins, Leila Truman, Laura Anne Theune
House Manager	Matt Wasniok
House Staff	James Cherico, Scott Fagant
Landscaping	Bob Nofi
Concession Manager/Production Photographer	Mil Kana

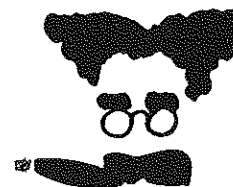
GATEWAY PLAYHOUSE

PLAYBILL

1992

ALLAN and ALLAN ARTS, LTD.
in association with
PAUL ALLAN and JOHN HODGE

present



GROUCHO A LIFE IN REVUE

by ARTHUR MARX and ROBERT FISHER

starring

FRANK FERRANTE

with

ROY ABRAMSOHN MARGUERITE LOWELL

and

CHRISTOPHER LESSON

Resident Designer
Technical Director

MICHAEL BOYER

Lighting Design
KIM HANSON

Stage Manager
DOM RUGGIERO

Costume
Design

JOSE M. RIVERA

Musical Direction
PHYLLIS GESSLER

Directed by
FRANK FERRANTE

GROUCHO: A LIFE IN REVUE is presented by special arrangement with Samuel French, 45 W. 25th Street, New York, N.Y.

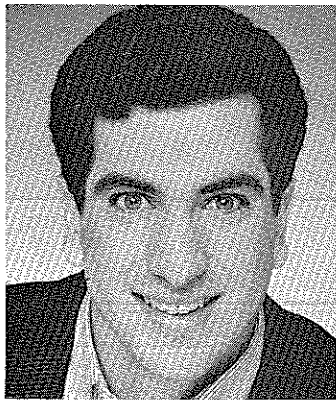
CAST OF CHARACTERS

Groucho	FRANK FERRANTE*
Chico/Harpo	ROY ABRAMSOHN*
The Girls	MARGUERITE LOWELL*
Citizen of Freedonia	CHRISTOPHER LESSON



*Actors employed in this production are members of Actors' Equity Association, the union of Professional Actors and Stage Managers in the United States.

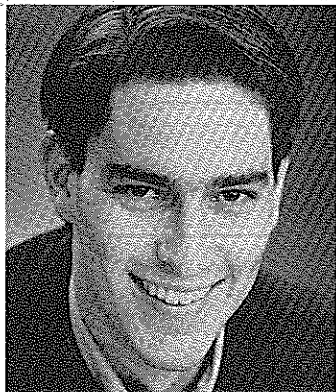
WHO'S WHO IN THE COMPANY



FRANK FERRANTE (*Groucho Marx/Director*) earned a Laurence Olivier Award nomination in London for "Comedy Performance of the Year" for his West End portrayal of Groucho Marx from age 15 to 85 in *GROUCHO: A LIFE IN REVUE*. Mr. Ferrante originated the role off Broadway in New York where he won a Theatre World Award and was nominated for an Outer Critics Circle Award for "Most Striking Debut of the Season." In Los Angeles, he won a Drama-Logue Award and received a Robby Award nomination. Opening night of this production marks his 1000th performance. He has also played the role in Kansas City, Dallas, Burt Reynolds Theatre in Jupiter, Florida and the Pasadena Playhouse. A 1985 graduate of the University of Southern California's Drama department, he first gained national attention while attending USC where he performed his one-man show *AN EVENING WITH GROUCHO*. Groucho's son Arthur, daughter Miriam Allen and Morrie

Ryskind, the collaborator of the Marx hits "THE COCOANUTS," "ANIMAL CRACKER" and "A NIGHT AT THE OPERA," attended the USC performance. Pulitzer Prize-winning Ryskind described Mr. Ferrante as "...the only actor aside from Groucho who delivered my lines as they were intended to be." Subsequently, Mr. Ferrante was hired by playwright Arthur Marx. Mr. Ferrante has played Harold Hill in *THE MUSIC MAN*, Nathan Detroit in *GUYS & DOLLS*, John Adams in *1776*, Dr. Framingham in Durang's *BEYOND THERAPY*, Moonface and Sir Evelyn in productions of *ANYTHING GOES*, the Danny Kaye role in *LADY IN THE DARK*, and 75 year old Otto Ross in the L.A. premier of *A COUPLE OF GUYS AT THE MOVIES*. He played the Groucho role, Captain Spalding, in the revival of *ANIMAL CRACKERS* at Boston's Huntington Theatre and Atlanta's Alliance and his *AN EVENING WITH GROUCHO* is now touring nationally. Mr. Ferrante has been featured on the "Today Show," CNN, CBS Morning News, "Regis," "Entertainment Tonight," BBC radio and television and guest starred on television's "General Hospital" and "Charles in Charge." Mr. Ferrante's voice is featured as Groucho on the "book-on-tape" of "Love, Groucho" available in stores in September. Along with Tony Award-winner Michael Maguire, Mr. Ferrante has penned his first television comedy series - "Hal's."

ROY ABRAMSOHN (*Chico/Harpo*) was born and raised in Levittown, Pennsylvania! A graduate of the Oberlin Conservatory of Music, he moved to California five years ago to be the Musical Director of The Great American Melodrama and Vaudeville Show, where he also wrote and acted in original comedy sketches. Following two years as an actor/pianist at the Oregon Shakespearean Festival in Ashland, he moved to San Francisco, where he began a career in film and television. While in the Bay Area, he worked at the Berkeley Repertory Company and played "Bobby Franklin" in the production "Run For Your Wife" starring Linda Blair and Pat Paulsen in Ghiradelli Square. Roy

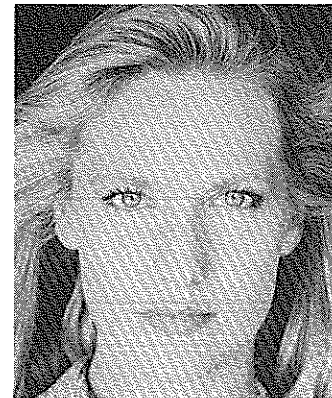


SYNOPSIS OF SCENES

ACT I: Groucho's memories - The early years
ACT II: Groucho's memories - The later years

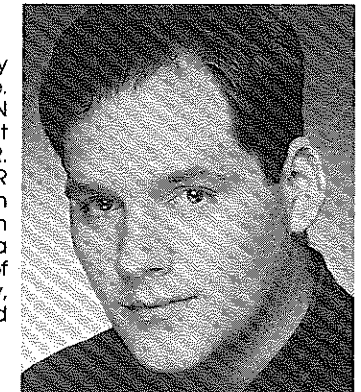
Copyrighted material for *Animal Crackers* and *Cocoanuts*, by George S. Kaufman and Morrie Ryskind, is used by permission

presently lives in Los Angeles, where his television credits include "Love and Curses," "Reasonable Doubts" and "Sisters." He can be seen in the upcoming film "Rapid Fire," starring Powers Booth.



MARGUERITE LOWELL (*The Girls*) is pleased to be playing "The Girls" after having performed the role to critical acclaim in London's West End and off-Broadway. Recently, she appeared in Los Angeles at the Coast Playhouse in *A LOVELY WAY TO SPEND AN EVENING*, a musical tribute to Harold Adamson and Jimmy McHugh, as well as *HAPPY BIRTHDAY COLE* in honor of Mr. Porter's 100th birthday. In the national tour of Stephen Sondheim and James Lapine's *INTO THE WOODS* she played Rapunzel. Her Broadway credits include *WIND IN THE WILLOWS* and *MARILYN: AN AMERICAN FABLE*. In addition, Marguerite has appeared in numerous television commercials.

CHRISTOPHER LESSON (*Citizen of Freedonia*) is happily returning for his 5th show at Gateway Playhouse. Audiences will remember him from last season's *ON YOUR TOES*, and *SOUTH PACIFIC*, as well as past productions of *BILOXI BLUES*, *ME AND MY GIRL*, and *HAIR*. Some of his favorite roles include Captain Hook in *PETER PAN*, Fagan in *OLIVER*, Bill in *CAROUSEL*, and Judas in *GODSPELL*. Chris has traveled around the country with various shows and was recently seen in Sarasota, Florida in a touring production of *BIG RIVER* playing the role of Hank. Chris would like to thank his mother Peggy, Kalena, and most importantly God, for all the love and continuing support.



DOM RUGGIERO (*Production Stage Manager*) has stage-managed at Gateway for the past 4 seasons as well as directing. Past Gateway productions were *LITTLE SHOP OF HORRORS*, *BIG RIVER*, *BEEHIVE*, *RUMORS*, *ANYTHING GOES*, *INTO THE WOODS*, *LEND ME A TENOR* and *SONG & DANCE*. He has directed for many theatres across the states such as Theatre-by-the-Sea, Celebrity Dinner Theatre, Golden Apple Dinner Theatre, Seaside Music Theatre, Theatreworks and New York City Opera. As a Production Stage Manager, Dom has worked on numerous National and international tours of *AIN'T MISBEHAVIN'*, *THE ALL NIGHT STRUT*, *SONG & DANCE*, *MARTIN* (a new musical by Charles Strouse) and NYC Opera's production of *LA TRAVIATA*. For Ensemble Studio Theatre, he stage managed the premiere production of Richard Greenberg's *LIFE UNDER WATER* starring Amanda Plummer, Jill Eickenberry and Andrew McCarthy. Dom will be directing upcoming Gateway productions of *PETER PAN* and *ONCE ON THIS ISLAND* as well as the 2nd Australian National Tour of *AIN'T MISBEHAVIN'*.