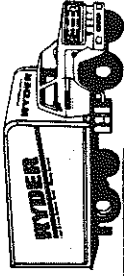
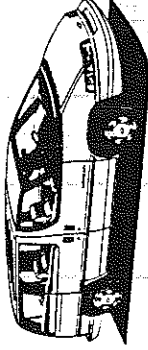


RYDER

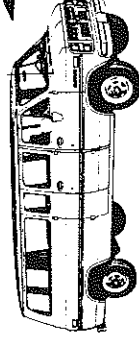
Truck Rental



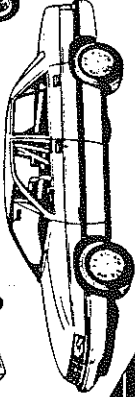
RELIABLE
Car Rentals



7 Passenger Mini-Vans



12-15
Passenger Vans



ANTHONY

AUTO GROUP

Rentals • Leasing • Sales

EST. 1969

INTEGRITY • SERVICE • RELIABILITY

533 Medford Avenue, Rte. 112
Patchogue, Long Island 11772

1251 Montauk Hwy.
Mastic, Long Island 11950

PATCHOGUE 475-6656 • MASTIC 399-6656



- Cars → Mini-Vans → Passenger Vans → Cargo Vans → Trucks
- Towing Equipment → Boxes → Moving Supplies
- FREE PICK-UP & DELIVERY

UNLIMITED MILEAGE, MECHANICAL & INSURANCE REPLACEMENT PROGRAMS

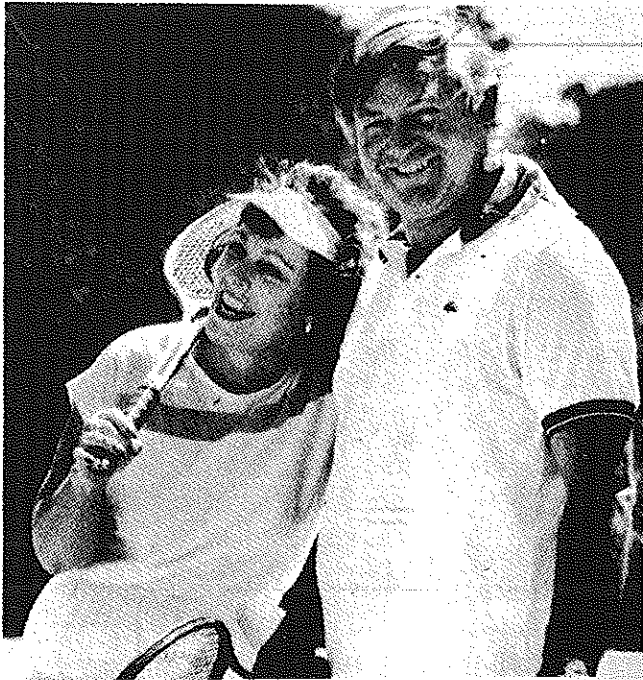
GATEWAY PLAYHOUSE

PLAYBILL

1994

AM
GUYS
NAKED
MOE

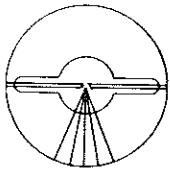
For peace of mind...
Take the time



MAMMOGRAPHY SAVES LIVES

Full Mammography accreditation by the American College of Radiology

BROOKHAVEN RADIOLOGIC ASSOCIATES, P.C.



HOSPITAL ROAD PROFESSIONAL CENTER
250 Patchogue-Yaphank Road
East Patchogue, New York 11772
(516) 475-1030

WALTER P. QUIGLEY, M.D., D.A.B.R.
RONALD S. HAMES, M.D., D.A.B.R.
SETH O. MANKES, M.D., D.A.B.R.
STEVEN EPSTEIN, M.D., D.A.B.R.

MARK J. LODESPOTO, M.D., D.A.B.R.
IRA J. LANGER, M.D., D.A.B.R.
MARILYN LERNER, M.D., D.A.B.R.

ALLAN and ALLAN ARTS, LTD.
in association with
PAUL ALLAN and JOHN HODGE
by arrangement with
CAMERON MACKINTOSH

presents

FIVE GUYS NAMED MOE

A Musical by CLARKE PETERS
featuring LOUIS JORDAN'S Greatest Hits

Originally Produced at the Theatre Royal Stratford East

starring
(in alphabetical order)

DAVID DAMANE
WAYNE W. PRETLOW

ROBERT H. FOWLER
RUDY ROBERSON

DERRICK MCGINTY
KEITH WILSON

Scenic Designer
Technical Director
MICHAEL BOYER

Production
Stage Manager
DOM RUGGIERO

Costume
Designer
JOSE M. RIVERA

Lighting Designer
STEVEN STACKLE

Sound Designer
MARK CLARK

Production Manager
JEFF BELLANTE

General Manager
GALE EDWARDS

Musical Direction
DARIUS FROWNER

Co-Choreographer
JAY POINDEXTER

Staging and Choreography by
KEN LEIGH ROGERS

FIVE GUYS NAMED MOE is presented through special arrangement with
Music Theatre International, 545 Eighth Avenue, New York, NY 10018

Bellport CHOWDER HOUSE



An Eating and Drinking Tradition

FULL MENU

FULL BAR

Open Daily For Lunch and Dinner
Seven Days A Week

CHAMPAGNE BRUNCH SUNDAY NOON TILL 3 P.M.

Sunday - Thursday till 11:00 p.m. Friday & Saturday till Midnight

**SPECIALIZING IN FRESH LOCAL SEAFOOD
AT AFFORDABLE PRICES**

*Before and After the Show You'll Want to Meet and Eat At
THE CHOWDER HOUSE*

TAKEOUT

CATERING

19 Bellport Lane • Bellport Village • 286-2343

CAST

(in alphabetical order)

Nomax DAVID DAMANE*

Eat Moe ROBERT H. FOWLER*

Little Moe DERRICK MCGINTY*

Big Moe WAYNE W. PRETLOW**

Four-Eyed Moe RUDY ROBERSON*

No Moe KEITH WILSON*



*Actors employed in this production are members of Actors' Equity Association,
the union of Professional Actors and Stage Managers in the United States.

WARNING - The photographing or sound recording of any performance is strictly prohibited



Saigo's Secret Story

PUSH KA PI SHI PIE - EH EH

PUSH KA PI SHI PIE - EH EH

OOBLI - AAYEE EYAY ABLA

IT'S THE NEW CALYPSO BE BOP

©1950 (Renewed) CHERIO CORP.
All Rights Reserved



WBLI

106.1

*The best on Long Island is
also the most **POWERFUL**
station on Long Island...*

*now broadcasting
at **49,000 watts!!***

3090 Route 112
Medford • Long Island
732-1061

SONGS

Act 1

1. Early in the Morning (Louis Jordan)
2. Five Guys Named Moe (Larry Wynn/Jerry Breslen)
3. Brother Beware (Lasco/Adams Moore)
4. I Like 'Em Fat Like That (Claude Demetriou/Louis Jordan)
5. Messy Bessy (Jimmy Smith)
6. Pettin' and Pokin' (Lora Lee)/Life Is So Peculiar (John Burke/Van Heusen)
7. I Know What I've Got (Sid Robin)
8. Azure Te (Bill Davis/Dan Wolf)
- *9. Safe, Sane and Single (Louis Jordan/Johnny Lange/Hy Heath)
10. Push Ka Pi Shi Pie (J. Willoughby/L. Jordan/W. Merrick)

Act 2

1. Push Ka Pi Shi Pie (Instrumental Reprise)
- *2. Saturday Night Fish Fry (Walsh/Jordan)
3. What's the Use of Gettin' Sober (Busby Meyers)
4. If I Had Any Sense I'd Go Back Home (R. McCoy)
5. Dad Gum Your Hide Boy (Browley Bri)
6. The Cabaret:
Five Guys; Let The Good Times Roll (Francis Moore/Sam Theard); Reef Petite and Gone (Spencer Lee/Louis Jordan); Caledonia (Moore/Moine); Ain't Nobody Here But Us Chickens (J. Witney/A. Kramer); Don't Let The Sun Catch You Crying (Jo Greene);
*Choo Choo Ch'Boogie (Horton/Darling/Gabler); Look Out Sister
7. Medley:
Hurry Home (J. Meyer/Buddy Bernier/R. Emmerich)/I Know What I've Got/Is You Is Or Is You Ain't My Baby (S. Austin/Louis Jordan)/Don't Let The Sun Catch You Crying
8. Five Guys Named Moe

*Indicates original choreography by Charles Augins

ACT III TAKES PLACE AT



Patchogue Floral's Fantasyland



COME
BROWSE

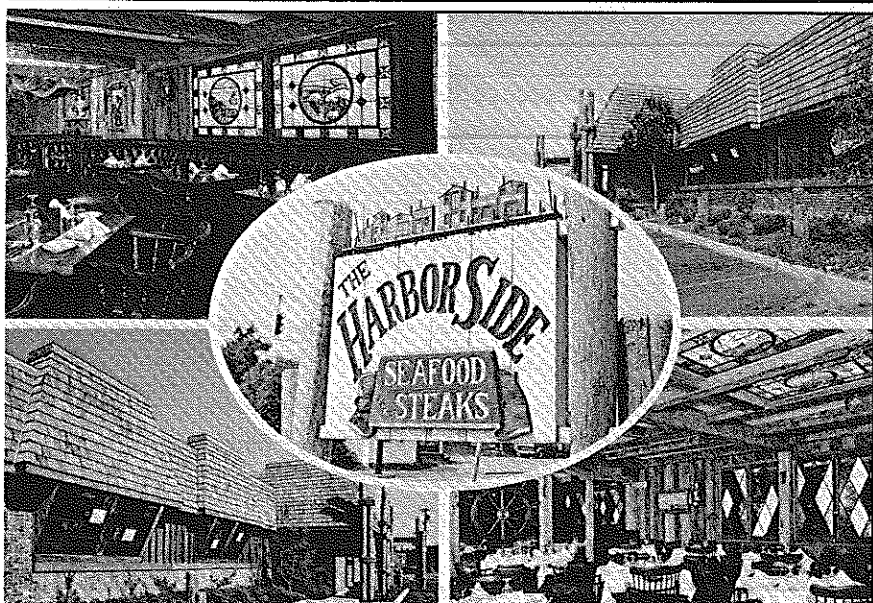
LARGEST EMPORIUM CATERING TO
THE ESTHETIC PROCUROR OF UNUSUAL HOME DECOR —

Giftware - Art Crafts - Custom Permanent Arrangements

10 Robinson Avenue • East Patchogue • 475-2059

Enjoy Distinctive Dining In A
Beautifully Appointed Natural Setting...

Harbor Side Restaurant

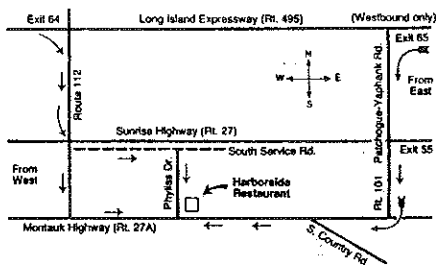


Complete Lunch Menu
Mon. through Sat.
Starting at \$7.95

Extensive Dinner Menu
Starting at \$13.95

Early Bird Menu
Mon.-Fri. 3:30pm-5:45pm
Sat. 3:30p.m.-5:30p.m.
Starting at \$8.50

*Private Room Available
for up to 125
Overlooking Souvenir Lake
for Your Next Special Occasion*



Open 7 Days a Week at 11:30 a.m.



rating by Barbara Rader, Newsday

Phyllis Drive at East Main Street
Patchogue, New York • 654-9290

**LOUIS
JORDAN**
1908-1975

Born on 8th July 1908 in Brinkley, Arkansas, the son of a music teacher, Louis Jordan started his career in a traveling vaudeville show. In the furtherance of his musical future he travelled first to Philadelphia, then to New York performing as sideman, playing the alto sax, and singing with numerous bands including the Charlie Gaines, Clarence Williams and Chick Webb orchestras.

He began his solo career in 1938. Leading his own combo, The Tympany Five, he started to forge his individual style as showman, comic, entertainer and leader. The Tympany Five (although his pool of artists was larger) began to record for Decca in 1939. During Jordan's time with Decca he produced over two hundred sides, many making the charts. Throughout that time the band enjoyed themselves and many talents were nurtured. "In the Tympany Five, the trumpets had real fun," Kurt Mohr later reminisced. Bill Jennings, Aaron Izenhall, Bill Doggett, Wild Bill Davis and Bob Mitchell all spent time as part of the Five. And upfront there was always Louis. He could croon, he could scat and his songs covered an enormous range. His satirical lyrics did not fight shy of covering the problems of being black and his group became a major attraction both on disc and on radio. His brilliant vocals and comic asides fire the popular imagination.

Major hits of that time were: **Caledonia, My Baby Said Yes**, with Bing Crosby (1945); **GI Jive, Is You Is Or Is You Ain't My Baby** (sold a million), **Choo, Choo Ch'boogie** (1946); **Open the Door Richard** (1947); **Baby It's Cold Outside**, with Ella Fitzgerald and **Saturday Night Fish Fry** (1949)

Jordan left Decca just before the rise of Bill Haley, when **Rock Around the Clock** saw the popular beginnings of Rock-and-Roll. In 1954 he signed with Eddie Messner's Aladdin label for two years before joining Mercury in 1956. 1961 saw Louis with Morty Croff's Warwick Records after which he moved on to Ray Charles' Tangerine label in the mid-sixties and 1968 brought him to Paul Gayton's Los Angeles-based Pzazz company.

Louis Jordan's style, though rooted in blues and jazz, encompassed jump, boogie, the calypso, rumbas and ballads. Although it was as an entertainer that Louis Jordan wanted to be remembered — "I want to play for the people," he said — the importance of his work as one of the fathers of Rock-and-Roll has been acknowledged by many later performers including Ray Charles and Chuck Berry: "If I had to work with anyone through Eternity, it would be Louis Jordan."

He died in Los Angeles of a heart attack on 4th February 1975.

Gateway
PLAYHOUSE

Gift Certificates...

Your Ticket to Gift Giving!

- ◆ Anniversaries ◆ Holidays
- ◆ Birthdays ◆ Any Occasion

Call 516 ♦ 286 ♦ 1133



VARNNEY'S RESTAURANT

SEAFOOD

OPEN 7 DAYS



LUNCH DINNER
COCKTAILS

FRESH SEAFOOD
STEAKS-CHICKEN
DAILY SPECIALS
HOME MADE DESSERTS

JOIN US BEFORE THE SHOW
CASUAL ATMOSPHERE
PERSONABLE SERVICE

ARRIVE EARLY OR CALL
FOR RESERVATIONS !!

2109 Montauk Highway
1/2 Mile East of Station Road
Brookhaven, NY 11719
(516) 286-9569



THE GREAT SOUTH BAY
INN



See The Show
And Stay The Night

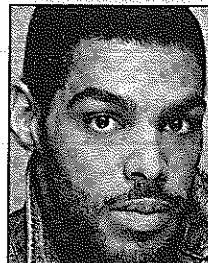
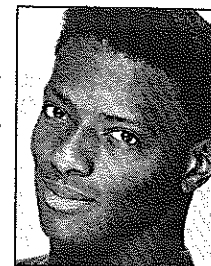


Also Serving Breakfast

160 South Country Road
Bellport, NY 11713
(516) 286-8588

WHO'S WHO

DAVID DAMANE (*Nomax*) Regional and Off-Broadway credits include, among others, **Big River** (Jim), **The Grapes Of Wrath** (Jim Casy), **To Kill A Mockingbird** (Tom Robinson), and **Romeo and Juliet** (Tybalt), as well as touring with the Pushcart Players. Film credits, among others, include **Malcolm X** and **Portrait**. David also works on television and voice-overs, and currently trains at HB Studios in New York.



ROBERT H. FOWLER (*Eat Moe*) most recently appeared with Margaret Whiting in **Swing: The Big Band Musical**. Last seen on Broadway with Tommy Tune in his song and dance act, **Tommy Tune Tonite!** Robert's other Broadway credits include **Oh, Kay!**, **Dreamgirls** and **Uptown...It's Hot!** Films include: **Mo' Better Blues** and **Malcolm X**. Mr. Fowler and partner Frantz Hall just recently premiered their two-man show **You, Me & Sammy D.** in New York City. Robert would like to thank God, his family and friends, agent Bruce Levy, acting coach Sande Shurin, Frank Hatchett, Dwayne Palmer, Frantz Hall, Frank Larocca, The Gateway Playhouse, Ken Leigh Rogers, and the cast, crew and staff of **Five Guys Named Moe**. God bless!

DERRICK MCGINTY (*Little Moe*) is making his Gateway debut as Little Moe. Recently Derrick performed the role of Nibs in the Paper Mill Playhouse production of **Peter Pan**, as well as the Caroner in the **Wizard of Oz**, also at Paper Mill. He performed the role of Jimmy #1 in: **Grand Hotel** at Jupiter Theatre. He will be featured in the upcoming children's video series called **The Fluffy Duffy Adventures**. He had the good fortune of working with Shaquille "Shaq" O'Neal in the currently running Pepsi commercial and will be featured in an upcoming Tylenol commercial. Derrick dedicates his performance to his father.



WAYNE W. PRETLOW (*Big Moe*) is pleased to be making his premiere performance with Gateway. A native of Hartford, Connecticut, this versatile young entertainer is a veteran of stage where he has performed in such productions as **Dreamgirls** with the Elmsford Dinner Theater, and **The Dream Team** with the Goodspeed Opera House, written by Richard Wesley, starring Reggie Vel-Johnson. He appeared as Sir Evelyn, in the Hartford Stage Company production of **Anything Goes**, and as Lou in the Performing Ensemble production of **Spell #7**. His television credits include **Unsolved Mysteries** and **Saturday Night Live**. And he has just made his feature debut in Touchstone Pictures' **The Jerky Boys**. Currently you can watch for Wayne in television commercials for Spinkle Spangle Cereal, as the voice of the Genie, Coolwhip, Saturn Cars, and the U.S. Postal service to name a few. Wayne wishes to dedicate his performance to the creator, his family, friends and to the spirit of his father Willard S. Pretlow. Enjoy the show!

RUDY ROBERSON (*Four-Eyed Moe*) received his training at the Boston Conservatory of Music (BFA) and Rutgers University/Mason-Gross School of the Arts (MFA). He is equally at home in Off-Broadway, regional theatre, television and film, and as an entertainer as well. Recently Rudy has appeared in **Twist**, Walnut Street Theatre; **Woody Guthrie's American Song**, Syracuse Stage and GeVa Theatre; **Minges Alley** (feature film); **Spunk**, Fulton Opera House; **A House Divided**, Tennessee Rep. He has recently com-



since 1898
ROE agency inc.

▲ INSURANCE
REAL ESTATE ▲

125 EAST MAIN STREET :: Patchogue, N.Y. (516) 475-4000

CABOT'S FLORIST

- WEDDINGS Telephone
- FUNERALS
- HOUSE PLANTS
- HOSPITAL ARRANGEMENTS

- FRUIT BASKETS
- STUFFED ANIMALS
- BALLOON BOUQUETS
- DRIED & SILK ARRANGEMENTS



Business
accounts
welcome

91 Medford Ave., Patchogue
(Rt. 112) South of Sunrise Hwy.
Minutes from Brookhaven Hospital
Next to Robertaccio Funeral Home

Order by Phone
We Accept Major Credit Cards

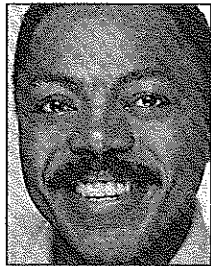
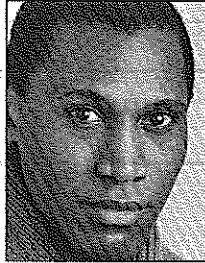
DAILY DELIVERIES

475-0408

WHO'S WHO

pleted work as director of **The Trage-D of Prince Hammy-T** (Rap Opera) at NADA in New York City. Other productions include **The Middle of Nowhere**, Astor Place Theatre; **Lullabye and Good Night**, Public Theatre; Joe Turner's **Come and Gone**, Studio Arena; **West Memphis Mojo**, Theatre Virginia; **Cyrano DeBergerac**, IRT; and others. TV and film include **Sesame Street**, **One Life to Live**, **Religion Inc.**, **A Marvelous Night**.

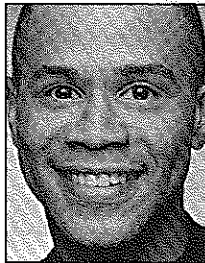
KEITH WILSON (*No Moe*) has toured nationally and internationally in many artistic venues, as well as stock and regional theatre. Keith hails to Gateway from the recent international tour of **Porgy & Bess**, making his opera debut in the roles of Crabman and Sportin' Life. Some of Keith's most memorable roles are Hud in the European tour of **Hair**, Tony Whitcomb in **Shear Madness** at the Kennedy Center, Andre in **Ain't Misbehavin'**, Tinman in **The Wiz**, Richie in **A Chorus Line**, Hysterium in **Forum**, Frid in **A Little Night Music**, and an appearance on the night time series **Law and Order**. After **Five Guys**, Keith will be joining the U.S. tour of **Porgy & Bess**.



KEN LEIGH ROGERS (*Director/Choreographer*) Ken has directed and choreographed throughout the U.S. Productions include: **Ain't Misbehavin'**, **My One and Only**, **West Side Story**, **The Wiz** and **Singin' in the Rain**. In London, he choreographed productions of **Stepping Out** and **Pump Boys and Dinettes**. One of his proudest achievements was mounting the West End production of **See-saw**. Ken also served as resident choreographer for Tommy Tune for the West End production of **Grand Hotel**. Ken served as assistant choreographer on David Merricks' **Oh, Kay!** which was nominated for a Tony Award for Best Choreography but lost out to Mr.

Tune!! As a performer, he's been featured in five Broadway shows and three musical films. Ken was director/choreographer of last season's Gateway production of **Grand Hotel** and this year's production of **The Will Rogers Follies**.

JAY POINDEXTER (*Co-Choreographer*) made his Broadway debut in **Cats** where he played the role of Tumblebrutus for six years. Upon leaving the Broadway company, Jay toured internationally with the 4th National Tour of **Cats**. He then returned to New York to be a part of the musical **My Favorite Year** at Lincoln Center. Regional credits include **Five Guys Named Moe** (Ford's Theatre, Washington, D.C. and Wilbur Theatre, Boston, Massachusetts) and **The Hot Mikado** (Ford's Theatre, Washington, D.C.).



DARIUS FROWNER (*Musical Director/Pianist*) **Five Guys** marks the sixth production for Darius at Gateway. Past shows include **Once On This Island**, **Grand Hotel** and **Nunsense**, and he has been an audition and rehearsal pianist for several others. Darius lives in New York City, where he is a regular on the cabaret scene. He hosts an open mike at the Duplex every Monday night, and has musically directed several Broadway performers in their own acts. Most recently, he performed **Ain't Misbehavin'** in Europe at jazz festivals in Italy, Finland and Austria. Darius is glad to work again with Ken Leigh Rogers and the entire cast of **Five Guys**. Thanks, Paul!

MICHAEL BOYER (*Scenic Designer*) has designed over 150 productions for Off-Broadway, community theatre, summer stock, university and amphitheater productions ranging from **Cat On A Hot Tin Roof** to **Morticians In Love**. His sets have been seen

from Singapore to Stockholm and from Anchorage to Key West. Winters he works at the Tennessee Williams Fine Arts Center and the Waterfront Playhouse in Key West. Special thanks to Paul Allan, John Hodge, Jim Kane and the dedicated, hardworking crew.

JOSE M. RIVERA (*Costume Designer*) returns to the Gateway for a third season. He is currently represented by The Will Rogers Follies aboard the S.S. Norway for Jean Ann Ryan Productions. For Gateway and Gateway's Candlewood Playhouse, he has costumed productions of **Sugar Babies**, **The Will Rogers Follies**, **The King And I**, **The Secret Garden**, **West Side Story**, **Phantom**, **Nunsense II**, **Fiddler On The Roof**, **A Chorus Line**, **Peter Pan**, **Gypsy**, **Once On This Island**, **Oklahoma!**, **Grand Hotel**, **City Of Angels**, **Groucho: A Life In Revue**, and **South Pacific**. Recent credits: The world premiere of **Emigration** at Theatre for the New City, and **Spitting Image** for the Forum Theatre and **The Will Rogers Follies** starring Marla Maples at Theatre of the Stars in Atlanta. He has designed, assisted, consulted, and/or coordinated costumes for over 100 productions for such theatres and organizations as the Paper Mill Playhouse, The Walnut Street Theatre, Pennsylvania Stage Company, Macy's, The Claridge Hotel and Casino, The Hampton Playhouse, Opera at Florham and Theatre-By-The-Sea.

STEVEN STACKLE (*Lighting Designer*) is excited to be designing for Gateway for the first time after serving as this season's Master Electrician. He works as a lighting designer and technician in New York City when not at Gateway. He is also about to start his second season at Manhattan Theatre Club.

DOM RUGGIERO (*Production Stage Manager*) **Five Guys Named Moe** marks Dom's 17th production for the Gateway and Gateway's Candlewood Playhouse. Past Gateway productions were **Sugar Babies**, **Little Shop Of Horrors**, **Big River**, **Beehive**, **Rumors**, **Anything Goes**, **Into The Woods**, **Lend Me A Tenor**, **Song & Dance**, **Peter Pan**, **Once On This Island**, **City Of Angels**, and last year's smash hits **Phantom** and **Buddy**. He directed this year's production of **The Secret Garden** and **Beehive** for Gateway's Candlewood Playhouse, soon to appear here at Gateway. He has directed for many theatres across the states such as Theatre-by-the-Sea, Celebrity Dinner Theatre, Golden Apple Dinner Theatre, Seaside Music Theatre, Theatreworks, and New York City Opera. As a Production Stage Manager, Dom has worked on numerous national and international tours of: **Ain't Misbehavin'**, **The All Night Strut**, **Song & Dance**, **Martin** (a new musical by Charles Strouse) and NYC Opera's production of **La Traviata**. For Ensemble Studio Theatre, he stage managed the premiere production of Richard Greenberg's **Life Under Water** starring Amanda Plummer, Jill Eikenberry, and Andrew McCarthy. Last year, he toured with the 2nd National Tour of **Ain't Misbehavin'** in Australia.

South Country Inn Restaurant



Fine Italian &
Continental Food
Away from the
Hustle & Bustle
Quiet & Quaint
Extra Special
Attention to All Our
Theater Guests

668 South Country Road
East Patchogue, NY

Turn right out of theater lot. Go two
traffic lights on your left side

758-1919

**Bellport
Country Club**

Fairways Café

Open to the Public
"upstairs at the Country Club...
Fabulous view...Super cuisine"
Lunch ★ Happy Hour ★ Dinner
★ Sunday Brunch

When visiting the Gateway Playhouse,
be sure to dine at
the Bellport Country Club

CATERING FOR ALL OCCASIONS
Weddings a Specialty

South Country Road, Bellport
for Reservations, Information
286-4227

Private Parties Catering



**Old
Inlet
Inn**

Fine dining

Make Curtain Call • Dine with us
When Curtain falls, join us for Dessert
Cocktails at our Piano Bar
Fri. & Sat. 9:00-1:00

BRIAN FINEGAN, CHEF

108 S. COUNTRY RD
BELLPORT, NY 11713

(516) 286-2650
Reservations Suggested



FAX 516-286-6080 516-286-0510
SENTRY HARDWARE
BELLPORT HARDWARE
PITTSBURGH PAINTS
9 BELLPORT LANE
ARTHUR NADEAU BELLPORT, NY 11713

Tel: 286-0395
**LYONS
FUEL OIL CO., INC.**
23 Station Road, Bellport, N.Y.



Main Street • Bellport, N.Y.

QUALITY FOOD IN A FRIENDLY
NEIGHBORHOOD MARKET

FULL LINE OF:
**Choice Meats & Poultry, Groceries
Produce & Dairy**

HOURS:
8-7 p.m. - Mon. - Thurs. 8-6 p.m. - Saturday
8-8 p.m. - Friday 8-1 p.m. - Sunday



BELLPORT PAINT & WALLPAPER, INC.

COMPLETE PAINT & WALLPAPER SUNDRIES
CABOT STAINS • OLYMPIC PAINT & STAINS

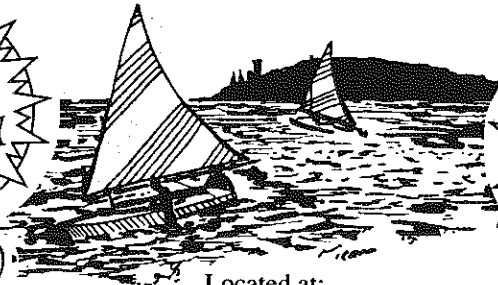
145 South Country Rd.
Bellport, NY 11713
516-286-5850



**Porto Bello
RISTORANTE**

FINE ITALIAN CUISINE

**PIZZA
PASTA
PASTRY**



**Seafood
Cappuccino
Cocktails**

**Capture
the
Moment**

Located at:
14 STATION RD. • BELLPORT, LI

for reservations or take out, call:

286-3300 • 286-3344

HOURS:
Mon-Thurs 11am-11pm
Fri, Sat 11am-1am
Sun 11am-11pm

**THE
BANK OF
NEW
YORK**

LONG ISLAND REGION

**BELLPORT BANKING
OFFICE LOCATED AT:**

32 Station Road
Bellport, New York 11713

Virginia Asero
Assistant Vice President

(516) 286-4200

Member FDIC 1986 The Bank of New York



**NEW
VISIONS**
UNISEX HAIR DESIGNERS
full service hair and
nail salon

Create the Look
that Adds
Dimension and Style
to Your Active Life

MANICURES, PEDICURES, WAXING

155 S. Country Road, Bellport, N.Y. 11772
(516) 286-0216

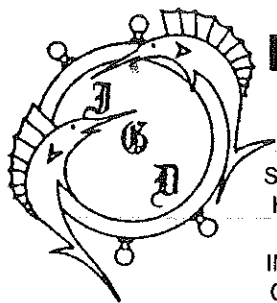
Bellport Delicatessen

Catering is our Specialty

124 Main Street, Bellport
(516) 286-0444 • FAX 286-6666

Open 5:30 a.m. - 10:00 p.m. 7 Days a Week
Open for Breakfast and Lunch Specials

Homemade Muffins • Gourmet Coffees

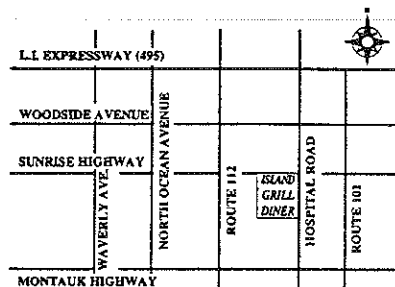
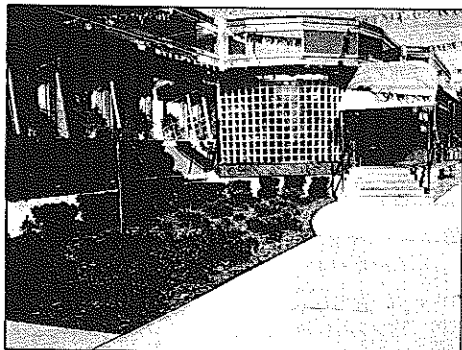


PETER'S NEW ISLAND GRILL

DINER — RESTAURANT

We specialize in:
 Seafood • Steaks • Chops
 Homemade Baked Goods
OPEN 24 HOURS
 INCLUDING ALL HOLIDAYS
 Catering & Private Parties

- Special Breakfast Menu
- Sautéed Menu
- Pasta Menu
- Special Island Grill Seafood Combinations
- Complimentary Glass of Wine with Lunch or Dinner
- Special Continental Menu
- 15% Discount for Senior Citizens

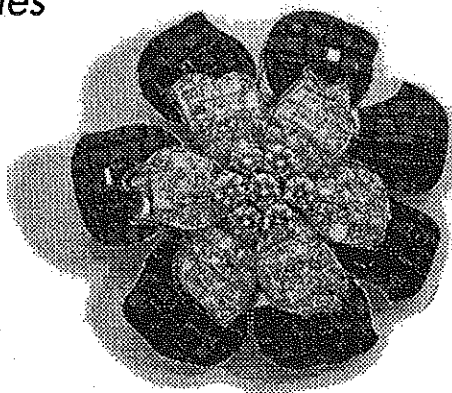


140 HOSPITAL ROAD • SUNRISE HIGHWAY • E. PATCHOGUE
 516-475-2110 • FAX 516-475-2180

- ◆ Tremendous selection of fine jewelry, period jewelry and collectables
- ◆ Out of pawn merchandise
- ◆ Written/Verbal and Estate Appraisals by appointment

O'Neill's

"SERVICING MANHATTAN TO MONTAUK"
 JEWELERS AND COLLATERAL LOANBROKERS



ONE EAST MAIN ST., PATCHOGUE • 289-9899

Sean & Veronica Cantwell, Kathryn Cantwell

GATEWAY PLAYHOUSE STAFF

Executive Producers	Ruth and Stan Allan
Associate Producers	Paul Allan, John Hodge
Production Manager	Jeff Bellante
General Manager	Gale Edwards
Director/Choreographer	Ken Leigh Rogers
Musical Director	Darius Frowner
Production Stage Manager	Dom Ruggiero
Casting Director	Robin Joy Allan
Scenic Designer/Technical Director	Michael Boyer
Costume Designer	Jose M. Rivera
Lighting Designer	Steven Stackle
Assistant Technical Director	James Kane
Co-Choreographer	Jay Poindexter
Assistant Stage Manager/Dance Captain	Robert H. Fowler
Sound Designer	Mark Clark
Master Electrician	Steven Stackle
Master Scenic Artist	Joan Curcio
Propmaster	Rob Conover
Assistant to Costume Designer	Angela Price
Costume Construction	Mary Allen, Josephine Funaro
Wardrobe	Catherine LoCurto, Nicole Evangelista, Raffaella Galeotafiore
Technical Staff	Mark Anderson, Joe Buck, Mark Clark, Chris Dono, Molly Moran, Dean Nicholson, John Nord, Donald Roberts, Nancy Sepe
Box Office Manager	Nancy Kana
Group Sales	Christine Bellante
Box Office Staff	Gladys Hawkins, Nadine Hazard, Doris Lundegard, Edith Menegus, Leila Truman, Barbara Wright
Production Assistant	Scott Fagant
Head Usher	Al Pollog
Ushers	Corinne Fagant, Gardner Fagant, Jamie Fagant, Morgan Fagant, Irene Fritz, Rita Webber
House Staff	Todd D'Ambrosio, Gardner Fagant, Frank Gabriel, Russell Hladky, Lynn Nofi
Maintenance/Landscaping Supervisor	Bob Nofi
Concession Manager/Production Photographer	Mil Kana

FIRE NOTICE: The exit indicated by a red light and sign nearest to the seat you occupy is the shortest route to the outside. In the event of fire or other emergency, please do NOT run. WALK to that Exit. However, under normal circumstances, when leaving the Theatre, use the center rear exit. SMOKING is prohibited in the THEATRE, as required by a new Suffolk County NO SMOKING ordinance. Please do not smoke in any area designated "No Smoking." This renders the offenders subject to a fine or imprisonment or both.

THE BELLPORT

RESTAURANT

Steps Away From The Playhouse

LUNCH from 12-3 PM • DINNER from 5:30
 159 South Country Road, Bellport, New York 11713 • (516) 286-7550

1580 AM
wl1m
 LONG ISLAND MUSIC

Glenn Miller, Johnny Mathis, Benny Goodman,
 Nat King Cole, Frank Sinatra, Dinah Shore,
 Barbra Streisand, Perry Como, Doris Day,
 and the Lettermen...

WHERE HAVE THEY GONE?

with
JACK ELLSWORTH
 TO THE TOP OF THE DIAL

1580 AM Stereo



LONG ISLAND MUSIC BROADCASTING
 CORP.

Woodside Avenue, Patchogue, L.I. 11772
 (516) 475-1580

☆ COMING TO GATEWAY ☆

October 12 - 23

Beehive

THE '60's MUSICAL
 S. W. A. K.



The best 60's musical of all. It's a Rock 'n Roll journey through and beyond the wonder years highlighting all the legendary songs of that tremendous era. Yes, you will see those **BEEHIVE** hairdos, the fashions of the times and how history has changed us forever. The famous girl groups and star performers sing their hearts out, from Petula Clark and Brenda Lee to Janis Joplin and Tina Turner. The tunes don't stop... "Downtown," "It's My Party," "Will You Still Love Me Tomorrow?," "To Sir With Love," "Respect"...and the list rocks on. An exciting trip down memory lane!

BOX OFFICE HOURS

Tuesday thru Saturday 12:30 - 10:00 p.m.
 Sunday 12:30 - 8:30 p.m. Monday 12:30 - 5:00 p.m.



CREDIT CARD ORDERS
 286-1133



(Based on ticket availability)

Mailing Address: Box 5, Bellport, New York 11713

✂ Have Scissors Will Travel ✂

Hair Services for Men and Women in the Convenience of Home or Business

★ combining your ideas with design lines best suited for you ★

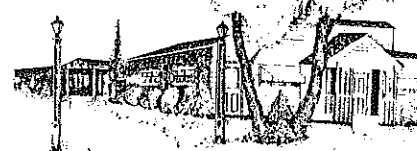


Jo Ellen • Licensed • NCA Member

Phone: (516) 878-1331 Pager: (516) 386-0386

The Sunland Manor

...A Better 'Ole...offering quality food & service
 Open for lunch & dinner

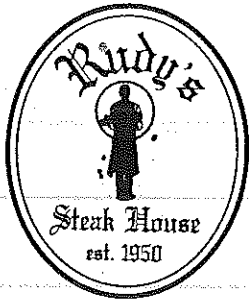


The original owners
 are back!

416 South Country Road
 Brookhaven, NY 11719
 286-9200 1/2 miles east of Gateway Playhouse on the right.

Complete Catering Facilities
 CLOSED MONDAYS

Dinner
 Specials
\$9.95



Eating is not permitted during the performance

Fortunately, there is a great restaurant nearby

Dinner is served Tuesday thru Saturday starting at 4:00 PM

All Major Credit Cards Accepted

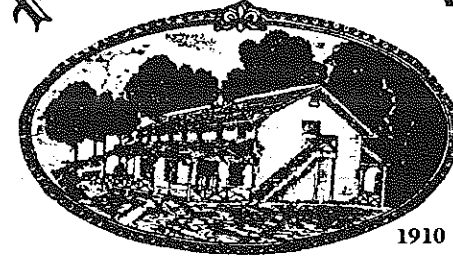
1610 Montauk Highway, Bellport 286-2700

MAYER'S Flower cottage

"We express your feelings — beautifully"

399 Medford Avenue, Patchogue, NY 11772 (516) 475-1779

Wine Grove Inn On The Swan River



1910

Daily Blackboard Specials!

Open Weekdays 11:30 A.M. Saturday 11:30 A.M. Sunday 12:00 P.M.

Dinner Served 4 PM to 10 PM Weekdays & Saturdays • Sundays 12 PM to 9 PM

EARLY BIRD SPECIALS

Monday thru Friday 4 PM to 6 PM Sundays 12 PM to 5 PM

LUNCH

Monday thru Saturday 11:30 AM to 3:00 PM

SUNDAY BRUNCH

12:00 PM to 3:00 PM

CHAPEL AVE. & FIRST ST. • EAST PATCHOGUE, N.Y.

OPEN 6 DAYS A WEEK 475-9843 CLOSED TUESDAY

OBLIVION POSTPONED



A roof-top terrace in Rome sets the stage for a hilariously life-altering encounter between two wildly mismatched couples.

by RON NYSWANER

Directed by NICHOLAS MARTIN

June 29 - July 17

BLUE LIGHT

by CYNTHIA OZICK

Directed by SIDNEY LUMET

Cast includes:

DIANNE WIEST

MERCEDES RUEHL

by Special Arrangement with Kathy Levin and David Brown

August 10 - September 4



Enrich your life, dramatically

(516) 725-9500



Bay Street Theatre Festival ON THE LONG WHARF, SAG HARBOR, NY is a not-for-profit organization.

ACTING AND MUSICAL THEATRE TRAINING

storytelling & theatre games classes for 5-8 year-olds

all levels of acting for all ages thru adult

television auditioning and musical comedy classes



GATEWAY ACTING SCHOOL

now enrolling! 286-9014

LEARN FROM THE PROFESSIONALS!



ROYAL OAK

Diner - Restaurant

Station Road and Sunrise Highway - Bellport, New York 11713

HOURS: 6:00 A.M. - 2:00 A.M. SEVEN DAYS A WEEK

TEL. (516) 286-5757

 **Radisson.**
HOTEL ISLANDIA

Dinner Theatre Package

Enjoy a luxurious evening with a delicious five-course dinner to enhance your theatre experience.

Package includes:

- ★ Two theatre tickets
- ★ Deluxe overnight guest accommodations
- ★ Five-course dinner for two
- ★ Indoor pool, whirlpool, and exercise facilities
- ★ Complimentary Showtime
- ★ Baby-sitting services available
- ★ Limousine service available by Tran-Star Executive Transportation



Package Price

\$89.00 Per Person

based on double occupancy
Package price does not include
tax. Package available 7 days a
week. Advance reservations
required.

Please call 516/232-3000
or 1-800-333-3333
and request
Dinner Theatre Package.

AA



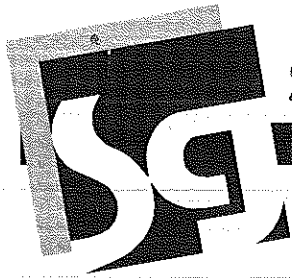
Our Commitment Is Here To Stay. But Our Planes Leave Over 180 Times Daily.

Flying You To Over 300 Cities From Six New York Area Airports.

For more than 50 years, we've firmly planted ourselves in the lives of New Yorkers by taking them where they need to go, when they need to go. And by making New York a much more convenient destination. Today, our commitment to New York is taking off like never before. With service from six area airports. Flights to over 300 cities in over 45 countries through American and American Eagle®. And people who make it their job to make your flight comfortable and worry-free. Because while we depart from New York over 180 times a day, our commitment to serving you never budges.

American Airlines®
Something special in the air.®

American Eagle is a registered trademark of American Airlines, Inc., and is American's regional airline associate.



SEARLES GRAPHICS INC.

*Full Service Commercial Printing
and Design Studio*

1457 Montauk Highway
P.O. Box 2099
East Patchogue, NY 11772
Tel: (516) 286-2943 Fax: (516) 286-3281

*Playhouse Plumbing Done By
Beach Plumbing &
Heating, Inc.*

Phone 281-4396 • John Vilano
Alterations Repairs New Work

*Gude
photography*

8 W Main St.
Patchogue NY
654-8093

Beach
Portraits



**COLEMAN
CESSPOOL SERVICE, INC.**
SCHWAB's Cesspool Cleaning

PRECAST CESSPOOLS INSTALLED

A. COLEMAN

Phone: (516) 475-1733 878-2010

Locally Owned and Operated For Over 50 Years

1 CHAPEL AVENUE
EAST PATCHOGUE, NEW YORK 11772

RELIABLE SERVICE

ALL COUNTY
Home Security Systems
Residential • Commercial



WIRELESS

- Burglar Alarms
- Heat Detectors
- Fire
- Central Station
- Freeze Alert
- Medical Alert

**FREE
ESTIMATES**

*Authorized Distributor For
Dynamark • AllGuard
Safety Security Products*

(516) 286-8330

All County Home Security Systems
680 South Country Road
East Patchogue, New York 11772



*Home Sweet Home
Moving & Storage*

Company, Inc. • Since 1921

Local & Long Distance Moving

- ★ Scheduled New York Trips ★
- ★ Packing Material Available ★

Call **516 537-0700**

FAX: 516 537-7144

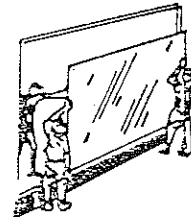
Montauk Highway, Wainscott, NY 11975

Serving **SUFFOLK COUNTY**

OVER 3 GENERATIONS

IN BUSINESS

ESTABLISHED 1929



STORE
FRONTS

INSULATED
GLASS

METAL & GLASS
TUB ENCLOSURES

CUSTOM ENTRANCES
CURTAIN WALL

DESK & FURNITURE TOPS
SPECIALIZING IN
INSURANCE CLAIMS

- PLATE GLASS
- PLEXI GLASS
- MIRRORS
- FREE
ESTIMATES

**PATCHOGUE
PLATE GLASS CO. INC.**

FAX # 475-1807

475-1790

24 HOUR EMERGENCY BOARD-UP SERVICE - ANY DAY



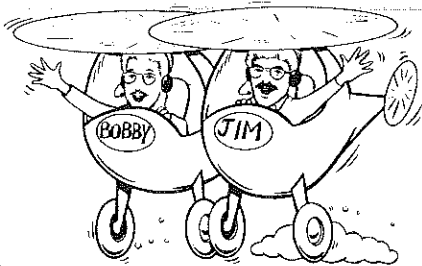
7 RAILROAD AVE.

(NIGHT CALLS AFTER 5 PM)
289-1524



PATCHOGUE

THE WALK BREAKFAST CLUB



DON'T WAKE UP WITHOUT US!
WALK FM 97.5
 LONG ISLAND'S #1 MORNING SHOW!

For All Your Catering Needs Contact...

Kurts Caterer's of Smithtown

Offering Kosher and Non-Kosher Items. • Full service or self service catering.
 Complete entertainment and party services.
 Wait Staff and Bartenders always available.

Catering For Those Special Occasions

385-3 Veterans Highway
 Smithtown, New York 11787

For Further Information, Call
 516-543-4180 • 516-543-4181

Richard Youngren, Banquet Manager

Kurts Caterer's is the official opening night caterer
 for Gateway Playhouse

DO YOU RECEIVE OUR FREE BROCHURE EACH YEAR?

If not, fill out the form and leave it in the box office.

(Please Print)

Name _____

Address _____

Zip _____

Fill out the form and leave it in the box office.

Gateway is making plans for the 1995 summer season. Please rank the following 12 shows in numerical order (#1 - would most like to see, #12 - would least like to see.)

- | | | |
|---------------------------------------|----------------------------------|---|
| _____ Meet Me in St. Louis | _____ Laughter on the 23rd Floor | _____ Best Little Whorehouse in Texas |
| _____ My Fair Lady | _____ Carousel | _____ Guys & Dolls |
| _____ Seven Brides For Seven Brothers | _____ Crazy For You | _____ Joseph and the Amazing Technicolor Dream Coat |
| _____ Cats | _____ Starlight Express | |
| _____ Shenandoah | | |

Other than the above or Phantom Of The Opera, Miss Saigon and Les Miserables, what other show would you like to see at Gateway next year?