

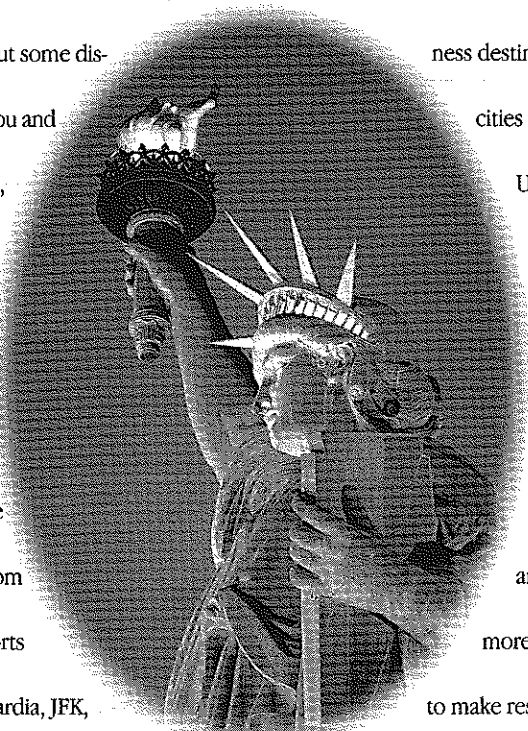
Over 200 Ways To Leave An Old Flame.



American Has Over 200 Departures Every Business Day To Over 300 Cities From Six Tri-State Area Airports.

Even the most passionate love affairs can benefit from a little time off. So, when it comes time to put some distance between you and the city you love, American and American Eagle® can help with more than 200 flights every single business day. From six tri-state airports including La Guardia, JFK, Newark, Long Island MacArthur, Newburgh Stewart and White Plains. It's never been

more convenient to fly to more than 300 cities worldwide, with service to key business destinations, major cities throughout the U.S., Europe, the Caribbean and Latin America. So, now it's never been easier to leave an old flame. For more information or to make reservations, call your Travel Agent or an American Airlines representative today at 1-800-433-7300.



American Airlines®
Something special in the air.®

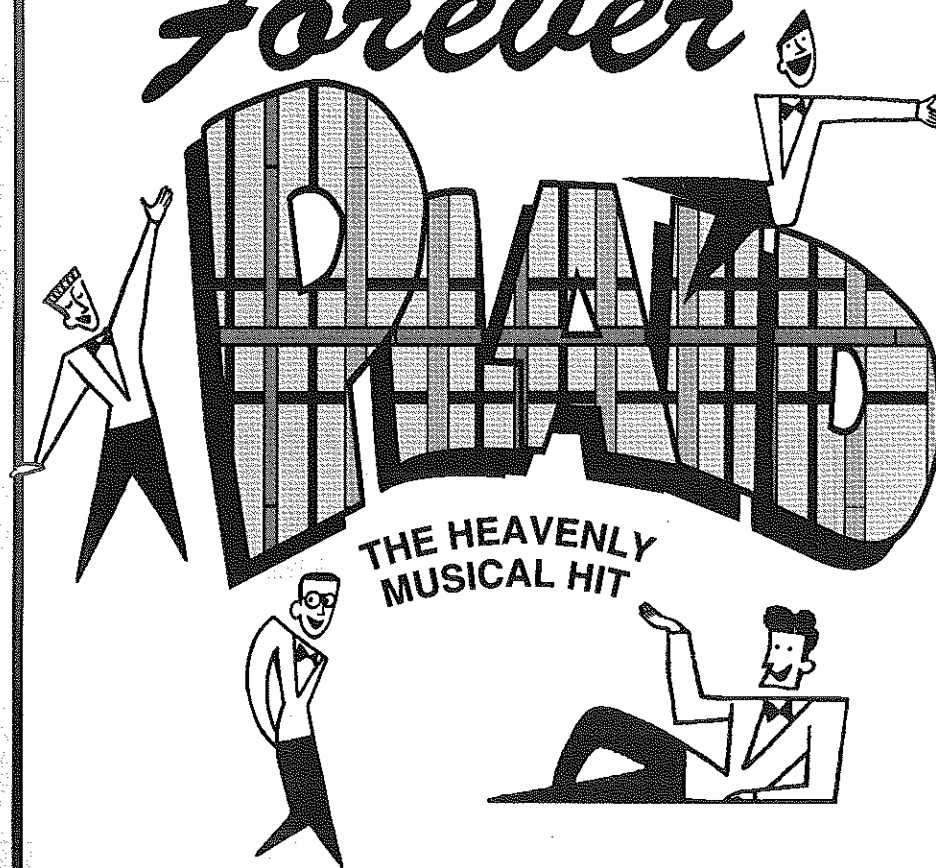
American Eagle is a registered trademark of American Airlines, Inc., and is American's regional airline associate.

GATEWAY PLAYHOUSE

PLAYBILL

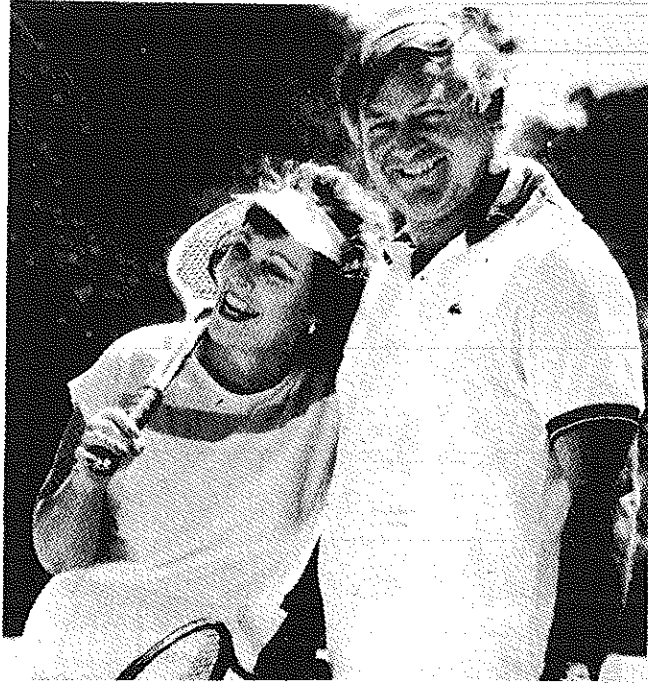
1995

Forever



THE HEAVENLY MUSICAL HIT

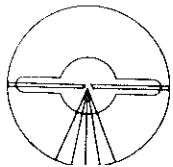
For peace of mind...
Take the time



MAMMOGRAPHY SAVES LIVES

Full Mammography accreditation by the American College of Radiology

BROOKHAVEN RADIOLOGIC ASSOCIATES, P.C.



HOSPITAL ROAD PROFESSIONAL CENTER
250 Patchogue-Yaphank Road
East Patchogue, New York 11772
(516) 475-1030

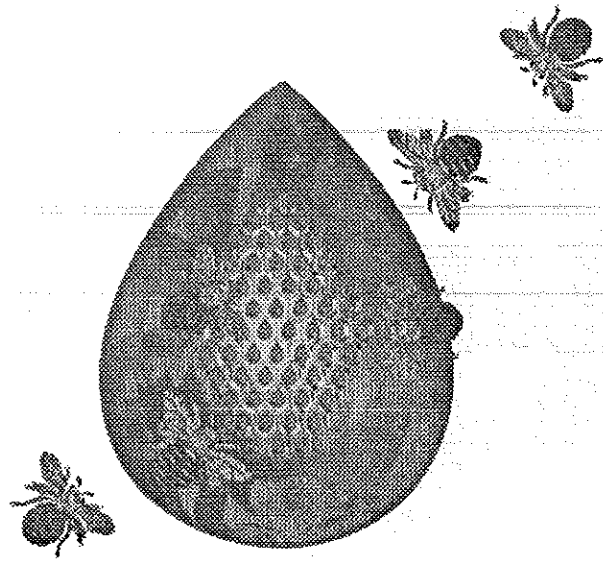
WALTER P. QUIGLEY, M.D., D.A.B.R.
RONALD S. HAMES, M.D., D.A.B.R.
SETH O. MANKES, M.D., D.A.B.R.
STEVEN EPSTEIN, M.D., D.A.B.R.


MARK J. LODESPOTO, M.D., D.A.B.R.
IRA J. LANGER, M.D., D.A.B.R.
MARILYN LERNER, M.D., D.A.B.R.

THE WALK BREAKFAST CLUB



DON'T WAKE UP WITHOUT US!
WALK^{FM} 97.5
LONG ISLAND'S #1 MORNING SHOW!



Tremendous selection of fine jewelry,
period jewelry and collectables. Savings on
unredeemed  merchandise.

Written/Verbal and Estate Appraisals by
appointment.

O'Neill's

*"Servicing Manhattan To Montauk"
Jewelers and Collateral Loanbrokers*

**One East Main St., Patchogue
289-9899**

Pean & Veronica Cantwell, Kathryn Cantwell

ALLAN and ALLAN ARTS, LTD.
in association with
PAUL ALLAN and JOHN HODGE

presents

**SCOTT PATRICK CALHOON
DANIEL KRELL**

**JUSTIN GOMLAK
TOM PLOTKIN**

in



Written and Originally
Directed and Choreographed by

STUART ROSS

Musical Continuity
Supervision and Arrangement by

JAMES RAITT

Originally Produced by
Gene Wolsk and Steven Suskin

Associate Producer
JEFF BELLANTE

Lighting Designer
JAMES FULTON

General Manager
GALE EDWARDS

Costume Designer
GUSTAVE J. PETTIT

Production Stage Manager
MARIBETH HUNTER

Sound Designer
MARK CLARK

Set Designer
NEIL PETER JAMPOLIS

Musical Direction
NATHAN HURWITZ

Directed and Choreographed by

BOB DURKIN

FOREVER PLAID is presented through special arrangement with
MUSIC THEATRE INTERNATIONAL, 545 Eighth Avenue, New York, NY 10018

Bellport Country Club

Presents L.I.'s Favorite Pre/Post Theatre Dining at:

Fairway's Cafe

Upstairs at the Bellport Country Club (Elevator Available)

Serving Lunch and Dinner Tues-Sun, 11:30 to Closing
Specializing in Succulent Steaks and Chops

Tuesday
"That's Italian"
Buffet Night
\$12.95
All You Can Eat
Served 4pm till Closing

Wednesday
Prime Rib Night
Complete Dinner
\$14.95
Served 4pm till Closing

Complete
Sunset Dinner
\$12.95
From
Wed.-Sat: 4pm till 6pm
Sun. 4pm till Closing

Spectacular
Sunday Brunch
BUFFET
\$12.95 Served
11:30am - 3pm
Sunset Dinners Served
4pm till Closing



Veranda Dining • Gift Certificates Available
South Country Road • Bellport Village • (516) 286-4227

472-2444
Bayport
House
Ristorante



291 Bayport Avenue
Bayport, New York

The Ultimate In Fine Dining

Specializing in Northern Italian/
Continental Cuisine
Open 7 Days • 5 pm

(516) 475-1790-1791
Fax (516) 475-1807

Emergency Boarding
Service
Call 289-1524

**PATCHOGUE
PLATE GLASS CO. INC.**

GLASS-MIRRORS-PLEXIGLASS-STORE FRONTS
AUTO GLASS-INSURANCE CLAIMS

RON HENTHORNE
Manager

7 Railroad Ave.
Patchogue, NY 11772

MAYER'S
Flower cottage

"We express your feelings — beautifully"

Flowers delivered anywhere
Weddings and parties our specialty

399 Medford Avenue, Patchogue, NY 11772 (516) 475-1779

Radisson.
HOTEL ISLANDIA

Dinner Theatre Package

Enjoy a luxurious evening with a delicious five-course dinner
to enhance your theatre experience.

Package includes:

- ★ Two theatre tickets
- ★ Deluxe overnight guest accommodations
- ★ Five-course dinner for two
- ★ Indoor pool, whirlpool, and exercise facilities
- ★ Complimentary Showtime
- ★ Baby-sitting services available
- ★ Limousine service available by Tran-Star Executive Transportation



Package Price

\$89.00 Per Person

based on double occupancy
Package price does not include
tax. Package available 7 days a
week. Advance reservations
required.

Please call 516/232-3000
or 1-800-333-3333
and request
Dinner Theatre Package.

ACTING AND MUSICAL THEATRE TRAINING

storytelling & theatre games classes for 5-8 year-olds
all levels of acting for all ages thru adult
television auditioning and musical comedy classes



GATEWAY ACTING SCHOOL

now enrolling! 286-9014

LEARN FROM THE PROFESSIONALS!

Bellport CHOWDER HOUSE



An Eating and Drinking Tradition

FULL MENU

FULL BAR

Open Daily For Lunch and Dinner
Seven Days A Week

CHAMPAGNE BRUNCH SUNDAY NOON TILL 3 P.M.

Sunday - Thursday till 11:00 p.m. Friday & Saturday till Midnight

**SPECIALIZING IN FRESH LOCAL SEAFOOD
AT AFFORDABLE PRICES**

*Before and After the Show You'll Want to Meet and Eat At
THE CHOWDER HOUSE*

TAKEOUT

CATERING

19 Bellport Lane • Bellport Village • 286-2343

THE CAST

(In Order of Speaking)

Frances TOM PLOTKIN*
Sparky DANIEL KRELL*
Jinx JUSTIN GOMLAK*
Smudge SCOTT PATRICK CALHOON*

THE BAND

Conductor - Nathan Hurwitz

Bass - Christopher Brayton Hayes White

Understudy for the "Plaids" SCOTT MCGOWAN*



* Actors employed in this production are members of Actors' Equity Association, the union of Professional Actors and Stage Managers in the United States.

since 1898

ROE agency inc.

▲ INSURANCE
REAL ESTATE ▲

125 EAST MAIN STREET :: Patchogue, N.Y. (516) 475-4000



CABOT'S FLORIST



- WEDDINGS
- FUNERALS
- HOUSE PLANTS
- HOSPITAL ARRANGEMENTS

- FRUIT BASKETS
- STUFFED ANIMALS
- BALLOON BOUQUETS
- DRIED & SILK ARRANGEMENTS

*Business
accounts
welcome*

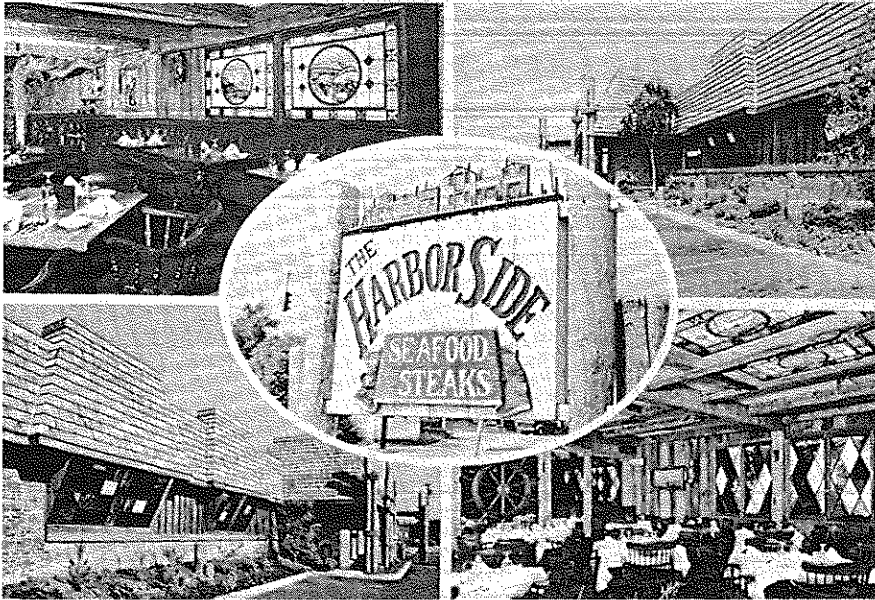
91 Medford Ave., Patchogue
(Rt. 112) South of Sunrise Hwy.
Minutes from Brookhaven Hospital
Next to Robertaccio Funeral Home

**Order by Phone
We Accept Major Credit Cards**

DAILY DELIVERIES

475-0408

Harbor Side Restaurant



"Incomparable Seafood Restaurant"

Complete Lunches from \$7.95 to \$10.95

Early Bird Menu

Mon.-Fri. 3:30 PM-5:45 PM

Sat. 3:30 PM-5:30 PM

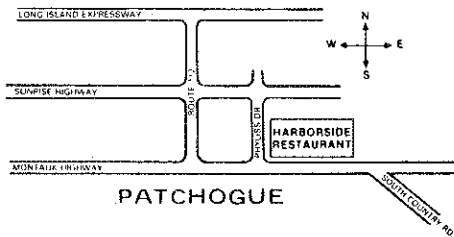
Starting at \$8.50

Appetizers from \$3.95 to \$5.95

Dinners from \$13.95 to \$22.95

*Let us plan
your next party
from 25 to 125*

Located On the Corner of
East Main St. (Rt 27A)
and Phyliss Drive



Open 7 days a week
at 11:30 am

Highly Recommended: ★★★
Newsday, Daily News
NY Post & The Practical Gourmet

503 E. Main Street
Patchogue, New York
(516) 654-9290

MUSICAL NUMBERS

"Three Coins in a Fountain"	Frankie
"Gotta Be This or That"	Sparky
"Moments to Remember"	Jinx
"Crazy 'Bout Ya Baby"	Frankie
"No Not Much"	Jinx
"Perfidia"	Sparky
"Cry"	Jinx
"16 Tons"	Smudge
"Chain Gang"	Frankie
"The Catering Drill"	All
"The Bride Cuts the Cake"	
"The Tarantella"	
"Anniversary Waltz"	
"Little Town of Bethlehem"	
"Hava Naghelah"	
"Rock My Soul"	
"She Loves You"	
"A Tribute to Mr. C"	
"Dream Along with Me"	Jinx
"Sing to Me, Mr. C"	Sparky
"Catch a Falling Star"	Sparky
"The Plaids Go Calypso"	
"Day-O"	Jinx
"Kingston Market"	Jinx
"Jamaica Farewell"	Smudge, Sparky
"Mathilda"	Frankie

INTERMISSION

"Sh-Boom"	All
"Heart and Soul"	Frankie
"Ed Sullivan"	
"The Mercury Commercial"	All
"Lady of Spain"	Jinx
"Scotland the Brave"	All
"Shangri-La/Rags to Riches"	Smudge
"Love is a Many Splendored Thing"	All

ACT III TAKES PLACE AT



Patchogue Floral's Fantasyland



COME
BROWSE

LARGEST EMPORIUM CATERING TO
THE ESTHETIC PROCUROR OF UNUSUAL HOME DECOR —

Giftware - Art Crafts - Custom Permanent Arrangements

10 Robinson Avenue • East Patchogue • 475-2059

WBLI

106.1

The best on Long Island is
also the most **POWERFUL**
station on Long Island...

now broadcasting
at **49,000 watts!!**

3090 Route 112
Medford • Long Island
732-1061

WHO'S WHO (in alphabetical order)

SCOTT PATRICK CALHOON (*Smudge*), a York, PA native, wishes to thank family and friends for their belief and support. After touring with Don Brockett's **BIG BAD BURLESQUE**, Scott worked in Pittsburgh onstage and/or backstage with **MR. RODGERS' NEIGHBORHOOD**, the Pittsburgh Playhouse, and Gargaro Productions, among others. His directing credits include **CABARET**, **CHICAGO**, **DRACULA**, and **WIDOWS AND CHILDREN FIRST**. Though directing and theatre administration are his first loves, he occasionally hits the boards as a performer, and has been seen in **THE MYSTERY OF IRMA VEP** in five roles, **CHICAGO** as Billy Flynn, **A FUNNY THING HAPPENED ON THE WAY TO THE FORUM** as Hysterium, **FOREVER PLAID** (Pittsburgh and West Virginia Public Theatre) as Smudge, **EVITA** as Juan Duarte, **SUPERSTAR** as Pilate/High Priest, **PETER PAN** as Indian/Pirate and **CABARET** as the Emcee.

JUSTIN GOMLAK (*Jinx*) hails from Buffalo, NY, and is entering his senior year at Carnegie Mellon University as a Classical Voice major. He recently performed Frankie in the Pittsburgh premiere of **FOREVER PLAID**, and just finished the season at the West Virginia Public Theatre, where he portrayed Jinx. Additional roles include Arab in **WEST SIDE STORY**, Marcellus Washburn in **THE MUSIC MAN** and Aladdin in a stage version of the Disney movie. Justin is looking forward to a National Tour of **SEVEN BRIDES FOR SEVEN BROTHERS** this spring, as well as graduation.

DANIEL KRELL (*Sparky*) was last seen at the West Virginia Public Theatre as Rocky in **DAMN YANKEES**, Tom Sawyer in **BIG RIVER**, and Sparky in **FOREVER PLAID**. Other West Virginia credits include Cliff in **CABARET**, Perchik in **FIDDLER ON THE ROOF**, and Al in **A CHORUS LINE**. Daniel was previously seen as Dickon in **THE SECRET GARDEN** and Dick Wilkins in **A CHRISTMAS CAROL** for the Pittsburgh Civic Light Opera. At the Pittsburgh Playhouse he was seen as Dick in **DAMES AT SEA** and Bobby in **COMPANY**. Dan is a graduate of the University of North Carolina's Professional Actor Training Program (MFA), where he worked extensively with PlayMakers Repertory Company in productions such as **NOTHING SACRED**, **THE MISER**, **THE CHERRY ORCHARD** and **LOVES LABORS LOST**. Dan has also appeared in several commercials, industrials, and feature films.

SCOTT MCGOWAN (*Understudy*) just completed our run of **LA CAGE AUX FOLLES** in the role of the son, Jean-Michel, and is thrilled to finally become "Plaid." He has also appeared here as John Jasper in **DROOD**, the Wolf and Cinderella's Prince in **INTO THE WOODS** and in the buff in **HAIR**. Scott has toured extensively throughout the States and Europe in such diverse roles as Bobby in **COMPANY**, an Indiana Jones doll, a 13 year-old bimbo named Bambi in

FREAKY FRIDAY and an All-American singer at a Presidential Inauguration. He can be glimpsed on **LAW & ORDER** and in the upcoming movie **STONEWALL** or in any office supply store.

TOM PLOTKIN (*Frankie*) most recently played the role of Frankie in **FOREVER PLAID** at the West Virginia Public Theatre and he is thrilled to be a Plaid once again. Tom, originally from Milwaukee, spent two years in England studying at London Studios and then in New York City at the American Musical and Dramatic Academy. Some other regional and stock credits include Arpad in **SHE LOVES ME**, Tony in **WEST SIDE STORY**, Joseph in **JOSEPH...DREAMCOAT**, Eugene in **BRIGHTON BEACH MEMOIRS, L.A.** in **GYPSY**, Peter in **THE DIARY OF ANNE FRANK**, and Brad in the National Tour of **THE ROCKY HORROR SHOW. SHOO BEE DOO WAH!**

CHRISTOPHER WHITE (*Double Bass/Uncle Chester*) is a recent graduate from the Manhattan School of Music where he obtained his Masters degree in orchestral performance. He has performed with such ensembles as the Vermont Symphony, Boston Festival Orchestra, and is the former principal Bass of the New Bedford Symphony. This is Chris' third season with Gateway, and third onstage performance. Last season he performed in **FIVE GUYS NAMED MOE** and **BEEHIVE**.

BOB DURKIN (*Director/Choreographer*) recently directed this production of **FOREVER PLAID**, as well as a production of **ANNIE**, for the West Virginia Public Theatre in Morgantown, WV. Earlier this season he directed and choreographed **FOREVER PLAID** at the Empire Theatre in Syracuse. This past spring, Bob directed and choreographed an international tour of **THE PHANTOM OF THE OPERA** by Kenley, Noll, and Jacobs, which premiered in Lisbon, Portugal. Last summer he directed and staged a critically acclaimed international tour of **AIN'T MISBEHAVIN'**, which opened the Vienna Jazz Festival. Bob choreographed Gateway's international tour of **ANYTHING GOES**, and also directed and choreographed national tours of **DREAMGIRLS**, **ONE MO' TIME**, **LITTLE SHOP OF HORRORS**, **AIN'T MISBEHAVIN'**, **PURLE** and **THEY'RE PLAYING OUR SONG**. He is currently directing the national tour of **NUNSENSE II**, and will begin work on the national tour of **SEVEN BRIDES FOR SEVEN BROTHERS** later this fall. On the East Coast, Bob's work has been seen by audiences at Gateway Playhouse, Gateway's Candlewood Playhouse, Westbury Music Fair, Pennsylvania Stage, Music Theatre North, the Pittsburgh Fulton Theatre, Carousel Dinner Theatre, Cape Fear Regional Theatre, and Cohoes Music Hall. In 1980 Bob gained the distinction of being the first civilian to ever stage **THE ONE HUNDREDTH NITE**.

Special Added Attraction



Season Ticket Holders
Take \$3.00 Off All
"Twist and Shout!" Tickets!

The Ultimate Beatles Revue
September 27 - October 8

The Beatles! John, Paul, George, and Ringo, who changed the history of music that affected the entire world. We have acquired exclusive rights to the sensational **Twist and Shout!**, an incredible simulation of the "Fab-Four," using members of the Broadway and National Touring Company. Gateway will present these Sing-A-Like, Look-A-Like Beatles performing all the great Beatle tunes from "I Wanna Hold Your Hand" and "Yesterday," to "Penny Lane" and "Hey Jude." Take a trip on the Magical Mystery Tour with the Beatles. It's an experience you'll never forget.

DO YOU RECEIVE OUR FREE BROCHURE EACH YEAR?
If not, fill out the form and leave it in the box office.

(Please Print)

Name _____

Address _____

Zip _____



Porto Bello

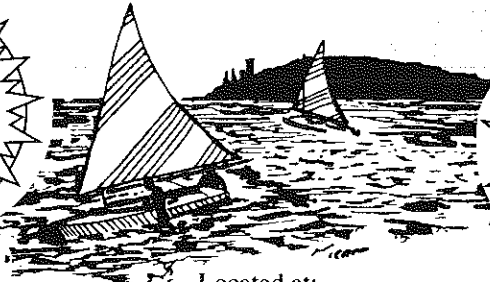
RISTORANTE

FINE ITALIAN CUISINE

PIZZA
PASTA
PASTRY

Seafood
Cappuccino
Cocktails

Capture
the
Moment



Located at:
14 STATION RD. • BELLPORT, LI

for reservations or take out, call:

286-3300 • 286-3344

HOURS:
Mon-Thurs 11am-11pm
Fri, Sat 11am-1am
Sun 11am-11pm

The Nautilus FITNESS CENTER Of Bellport

WE OFFER: • Heart Rate Monitoring • Blood Pressure Testing • Body Fat Composition Testing • Personalized Program Sheets • Prescheduled Private Workouts • Individual Attention From Certified Instructors • Before And After Photography

Free
TRIAL
WORKOUT

120 S. Country Road, Bellport Village 286-4899

shop in
BELLPORT VILLAGE

FAX 516-286-6080 516-286-0510
SENTRY HARDWARE
BELLPORT HARDWARE
PITTSBURGH PAINTS
9 BELLPORT LANE
ARTHUR NADEAU BELLPORT, NY 11713

WALLEN'S
IGA MARKET

Main Street • Bellport, N.Y.

QUALITY FOOD IN A FRIENDLY
NEIGHBORHOOD MARKET

FULL LINE OF:
Choice Meats & Poultry, Groceries
Produce & Dairy

HOURS:
8-7 p.m. - Mon. - Thurs. 8-6 p.m. - Saturday
8-8 p.m. - Friday 8-1 p.m. - Sunday

THE
BANK OF
NEW
YORK

LONG ISLAND REGION

BELLPORT BANKING
OFFICE LOCATED AT:

32 Station Road
Bellport, New York 11713

Virginia Asero
Assistant Vice President

(516) 286-4200

Member FDIC 1986 The Bank of New York

Tel: 286-0395

LYONS
FUEL OIL CO., INC.

23 Station Road, Bellport, N.Y.



BELLPORT PAINT & WALLPAPER, INC.

COMPLETE PAINT & WALLPAPER SUNDRIES
CABOT STAINS • OLYMPIC PAINT & STAINS

145 South Country Rd.
Bellport, NY 11713

516-286-5850

NEW
VISIONS
UNISEX HAIR DESIGNERS
full service hair and
nail salon



Create the Look
that Adds
Dimension and Style
to Your Active Life

MANICURES, PEDICURES, WAXING

155 S. Country Road, Bellport, N.Y. 11772
(516) 286-0216

Bellport Delicatessen

Catering is our Specialty

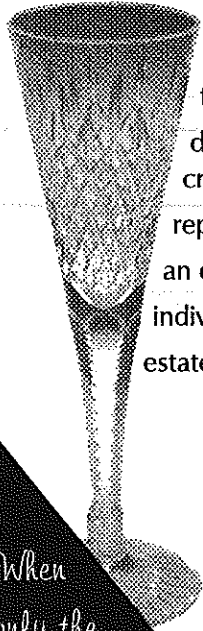
124 Main Street, Bellport

(516) 286-0444 • FAX 286-6666

Open 5:30 a.m. - 10:00 p.m. 7 Days a Week

Open for Breakfast and Lunch Specials

Homemade Muffins • Gourmet Coffees



Long Island's quality, full-service jeweler for over 135 years...
 fine jewelry and gems for all occasions...
 diamonds and pearls, gold and silver, watches and clocks,
 crystal, giftware and fine writing instruments...
 repairs are completed on the premises...
 an expert gemologist is always available...
 individual appraisals while you watch...
 estate jewelry purchased (collections or individual pieces).

Since 1860

F. Stadtmüller

JEWELERS

18 MAIN STREET • DOWNTOWN SAYVILLE
 (516) 589-3300
 MAJOR CREDIT CARDS WELCOMED

When
 only the
 best will do...

South Country Inn



Fine Dining At

Moderate Prices

Extensive Menu

Special Attention

*Continental Cuisine
 Early Bird Specials*

*Given to Theater Goers...We'll
 get you to the show on time!*

Open
 12 Noon
 to 11 PM
 Daily

Theater Groups

Welcome for Lunch and Dinner

668 South Country Road, East Patchogue

Open 6 days **758-1919** Closed Monday

516-726-8000



**Ann L. Nowak
 &
 Associates**
 ATTORNEYS AT LAW

**Credit Repair & Debt Relief
 Uncontested Divorces
 Wills and Estates
 Bankruptcy**

*General Counsel to the
 Gateway Playhouse*

Deerfield Green, P.O. Box 1290
 Water Mill, NY 11976-1290

ALL COUNTY

Home Security Systems

Residential • Commercial



WIRELESS

- Burglar Alarms
- Heat Detectors
- Fire
- Central Station
- Freeze Alert
- Medical Alert

**FREE
 ESTIMATES**

*Authorized Distributor For
 Dynamark • AllGuard
 Safety Security Products*

(516) 286-8330

All County Home Security Systems
 680 South Country Road
 East Patchogue, New York 11772

THE GREAT SOUTHBAY
 INN



*See The Show
 And Stay The Night*

Also Serving Breakfast

160 South Country Road
 Bellport, NY 11713
 (516) 286-8588

Gude
 photography
 8 W. Main St.
 Patchogue NY
 654-8093

Portraits
 Restorations

*Playhouse Plumbing Done By
 Beach Plumbing &
 Heating, Inc.*

Phone 281-4396 • John Vilano
 Alterations Repairs New Work

Volunteers Wanted

Gateway Playhouse is seeking
 volunteer ushers to join its
 Volunteer Corps

*Call 286-0555 for more
 information*

STAGE DOOR *Dance* SCHOOL OF

BALLET • POINT • TAP • JAZZ • TAP & BALLET COMBO • AEROBIC EXERCISE • STEP CLASSES

Fall Registration
Begins August 14

PLAZA 101
(ACROSS FROM CALDOR)
25 PATCHOGUE-YAPHANK RD.
EAST PATCHOGUE

Pre-School Thru Adults
Family Discounts

Celebrating Our
20th Anniversary

654-8858

Artistic Director
Diane Giattino



Setting the
Trend for
Restaurants
of the 90s

May we suggest our gourmet
specialty pastas, fresh local seafood,
steaks & homemade desserts

"Just Close Enough To Be Your Favorite Restaurant"

SUNDAYS WHOLE LOBSTER Special

\$6.95

(At The Bar Only)

\$5.00 OFF LUNCH

MIN. 2 LUNCH ENTREES PURCHASED

Taxes & Gratuities Not Included

With Coupon, not to be combined with any
other offers. One coupon per visit. Expires 12/31/95

\$10.00 OFF DINNER

MIN. 2 DINNER ENTREES PURCHASED

Taxes & Gratuities Not Included

With Coupon, not to be combined with any
other offers. One coupon per visit. Expires 12/31/95

Friday FREE Friday COMEDY PASS

With Purchase of Paid Admission
\$12.50 VALUE

Starts at 10:00 am

With Coupon, not to be combined with any other offers.
One coupon per visit.

Valid Friday & Saturday only. Expires 12/31/95

Saturday FREE Saturday COMEDY PASS

With Purchase of Paid Admission
\$12.50 VALUE

Starts at 10:00 am

With Coupon, not to be combined with any other offers.
One coupon per visit.

Valid Friday & Saturday only. Expires 12/31/95

HAPPY HOUR
CATERING WITH A FLAIR
LIVE MUSIC
COMEDY • SAT. & SUN.

Borderline CAFE



&
Comedy Club

2647 MONTAUK HWY.
BROOKHAVEN
286-8077



"We're Patient People"

AMATO FAMILY CHIROPRACTIC

16-2 STATION ROAD
BELLPORT, NY 11713

516-286-2300

Infant, Child & Adult Care

Dr. Frank J. Amato

COMING TO GATEWAY

Special Return Engagement of

ADDITIONAL
PERFORMANCES ADDED
October 18th
thru October 22nd



La Cage aux folles

will return to Gateway Playhouse for 1 week.

Dates for this engagement are October 18th - 22nd.

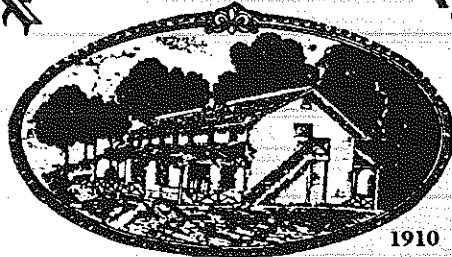
Contact the Playhouse box office at

286-1133 for more information.

Wine Grove Inn

On The Swan River

Open Weekdays
11:30 A.M.
Saturday
11:30 A.M.
Sunday
12:00 P.M.



Daily
Blackboard
Specials!

Dinner Served 4 PM to 10 PM
Weekdays & Saturdays • Sundays 12 PM to 9 PM

EARLY BIRD SPECIALS

Monday thru Friday 4 PM to 6 PM
Sundays 12 PM to 5 PM

LUNCH

Monday thru Saturday
11:30 AM to 3:00 PM

SUNDAY BRUNCH

12:00 PM to 3:00 PM

CHAPEL AVE. & FIRST ST. • EAST PATCHOGUE, N.Y.

OPEN 6 DAYS A WEEK 475-9843 CLOSED TUESDAY



Always Gives You
100%

WHO'S WHO (continued)

SHOW, a cadet graduating class tradition for well over a century at the U.S. Military Academy at West Point, accomplishing in real life what James Cagney did in THE WEST POINT STORY 28 years earlier. Bob is pleased to be returning to Gateway, and wants to thank the Allan family—Stan, Ruth, Paul and Robin—for all their many years of support and friendship. "It all began here with you."

NATHAN HURWITZ (*Musical Director*) a conductor, composer, arranger, and keyboard player for almost 20 years (he doesn't look that old, does he?) is pleased to be making his Gateway debut with FOREVER PLAID. Recently returned from the first National Tour of BLOOD BROTHERS starring Petula Clark and David Cassidy, Nathan has played and conducted around the country, and has musical directed at theatres including the Pittsburgh Public Theatre (A... MY NAME IS ALICE, and I DO! I DO!), the Williamstown Theatre Festival (THE GREEKS and SUMMERFOLK), Indiana Repertory Theatre (LIGHT UP THE SKY and the cabaret series) and Chicago's Candlelight (NUNSENSE II and MAME) and Drury Lane Oakbrook (GYPSY and GUYS AND DOLLS) Theatres. Having studied composition and conducting with Lehman Engel, directing with Jack Garfein, and acting with Stella Adler, and holding a BFA from NYU and an MA from Northwestern University, Nathan is currently working feverishly on his dissertation for a PhD from the University of Pittsburgh. Nathan lives with his dog, Max, and spends his days trying to maintain hope for the possibility of true romantic love. Nathan is very pleased to be once again working with one of his favorite collaborators, Bob Durkin, and with this particular PLAID gang.

PAUL ALLAN and JOHN HODGE (*Producers*) Messrs. Allan and Hodge have been theatrical partners since 1982. Between the two of them they have over 25 years of experience ranging from Broadway and Off-Broadway to Regional Theater and the last 14 years of Gateway's productions. They worked on the New York City productions of: GROUCHO, DIAMONDS, JUST SO, and PACIFIC OVERTURES. They have produced the National and International tours of ANYTHING GOES, SONG AND DANCE, CAMELOT, A CHORUS LINE, SOUTH PACIFIC, 42nd STREET, MAN OF LA MANCHA and OLIVER. They had the distinguished honor of bringing the first American produced musical to Singapore with their touring production of SOUND OF MUSIC in 1990. For the last three years they have been operating Gateway's Candlewood Playhouse in New Fairfield.

Swan Bakery

"Serving the Community Since 1946"

Celebrating our second anniversary under
new ownership

Official Baker to the Gateway Playhouse

Guy J. Gagliano Robert E. Roode

15 South Country Road
East Patchogue, N.Y. 11772

Tel. (516) 475-9626

Varney's

MUSSELS
Served with red or white sauce . . . \$5.95
L.I. STEAMERS \$5.95

SEAFOOD FRA' DIAVOLO
Includes: clams, mussels, crab legs, scallops,
shrimp—red or white sauce on bed of
linguine \$18.95
BBQ BABY BACK RIBS . . \$14.95
CHICKEN FRANÇAISE . . \$12.95

EVERY WEDNESDAY
BONELESS SHELL STEAK
Includes: cup of soup, salad or coleslaw,
bread, linguine, rice or fries,
ice cream & coffee or tea \$12.95

BEER • WINE • COCKTAILS
Open 7 Days: 11am-9pm - Fri. & Sat. till 10pm
Sun. 5-9pm

Daily Lunch Specials
2109 Montauk Highway, Brookhaven

286-9569



Old Inlet Inn



The Fine Dining Experience
Brian Finegan, Chef

Dinners from 6:00 PM
Wed. & Thurs. from 5:00 PM
Sunday Brunch 1-3:00 PM
Sunday Dinner 3-7:00 PM

Old Fashioned Nor'Eastern
Lobster Bake every Wednesday
\$25⁰⁰/person

Show Tune Sing-A-Longs on
Fri. & Sat. with Jim Ahrend
at the piano 9-1:00 AM

Patio Dining

108 So. Country Road
Bellport 286-2650

1580 AM
wl1m
 LONG ISLAND MUSIC

Glenn Miller, Johnny Mathis, Benny Goodman,
 Nat King Cole, Frank Sinatra, Dinah Shore,
 Barbra Streisand, Perry Como, Doris Day,
 and the Lettermen...

WHERE HAVE THEY GONE?

with
JACK ELLSWORTH
 TO THE TOP OF THE DIAL

1580 AM Stereo



LONG ISLAND MUSIC BROADCASTING
 CORP.

Woodside Avenue, Patchogue, L.I. 11772
 (516) 475-1580

WHO'S WHO (continued)

Connecticut. Upcoming projects include the National Tours of SHENANDOAH, SWEET CHARITY and an International Tour of WIZARD OF OZ.

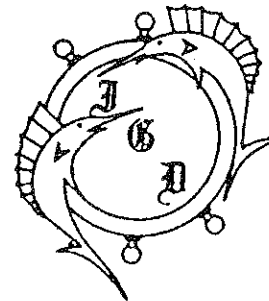
NEIL PETER JAMPOLIS (*Set Designer*) has designed sets, costumes or lighting for more than 300 plays, musicals, operas and ballets internationally. Recent set designs have included the 1991 Stratford Festival's CAROUSEL, the London Earls Court mammoth TOSCA, the national productions of CAMELOT and THE SOUND OF MUSIC, the Matrix Theatre's THE TAVERN (1994 L.A. Drama Critics Award for Best Production and Theatre LA Ovation Award Nominee), and over 30 productions of FOREVER PLAID. His dozens of Broadway designs have earned him 4 Tony Nominations for lighting, including his Tony-winning work for the Royal Shakespeare Company's SHERLOCK HOLMES, the musical revue BLACK AND BLUE (co-designed with Jane Riesman, his wife and partner of over 23 years), Harold Pinter's production of THE INNOCENTS, and Peter Hall's mounting of ORPHEUS DESCENDING. Lily Tomlin and Jane Wagner's THE SEARCH FOR SIGNS OF INTELLIGENT LIFE IN THE UNIVERSE netted him the L.A. Drama Critics Award. After years of designing productions for opera companies from the Metropolitan and New York City Operas to the Vienna State Opera, he recently extended his work to include the role of director-designer, notably with PELLEAS ET MELISANDE and HANSEL AND GRETEL for the Seattle Opera and FALSTAFF for Opera Theatre of St. Louis, which *The Times* of London called "three hours of operatic paradise."

MARIBETH HUNTER (*Production Stage Manager*) comes to Gateway after stage managing SHLEMIEL

THE FIRST for American Repertory Theatre in Cambridge and its pre-Broadway tour to Florida, Philadelphia, and Stamford, CT. Now a resident of Philadelphia, her stage management work there has included HEARTS BEATING FASTER, a new play by Ralph Pape at Cheltenham Center for the Arts, THE MYSTERY OF LOVE, an original musical by Seku Sundiata and Doug Booth for the American Music Theatre Festival, and KABUKI ACHILLES, a co-production between Illinois Kabuki Theatre and People's Light and Theatre Company, where she was the resident production stage manager for two years. ACHILLES was performed in Illinois and Philadelphia, and toured to Cyprus, Hungary, and Japan.

JAMES FULTON (*Lighting Designer*) has designed for many regional theaters including Pope Theatre Company, Cincinnati Playhouse, The Fireside, Merrimack Repertory, Connecticut Stage, and Blue Heron Theatre Company. For dance, Jim has designed for Ballet Florida, Cincinnati Ballet, Pittsburgh Ballet, and Nanette Bearden Dance Company. Jim is the associate designer for FOREVER PLAID and has been responsible for thirty-two companies performing in over fifty cities.

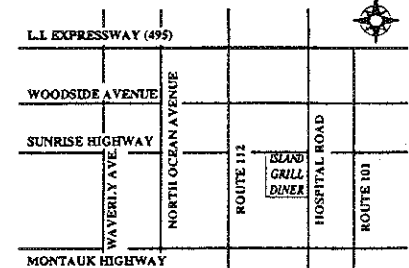
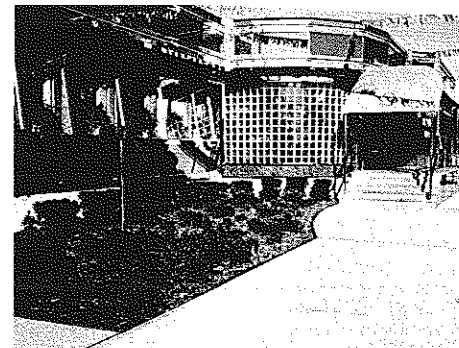
MARK CLARK (*Sound Designer*) is celebrating his fourth year as Gateway's Resident Sound Designer; he has designed all mainstage productions, and especially enjoyed working on PHANTOM, ONCE ON THIS ISLAND, and GRAND HOTEL. Mark travelled to the Far East with GREASE and SOUTH PACIFIC, with stops in Hong Kong, Malaysia, Singapore, and Indonesia, and also toured the United States and Canada with MY FAIR LADY and 42nd STREET.



PETER'S NEW ISLAND GRILL
 DINER — RESTAURANT

We specialize in:
 Seafood • Steaks • Chops
 Homemade Baked Goods
 OPEN 24 HOURS
 INCLUDING ALL HOLIDAYS
 Catering & Private Parties

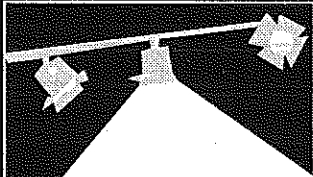
- Special Breakfast Menu
- Sautéed Menu
- Pasta Menu
- Special Island Grill Seafood Combinations
- Complimentary Glass of Wine with Lunch or Dinner
- Special Continental Menu
- 15% Discount for Senior Citizens



140 HOSPITAL ROAD • SUNRISE HIGHWAY • E. PATCHOGUE
 516-475-2110 • FAX 516-475-2180

BAY STREET THEATRE

1995 MAINSTAGE SEASON



A Life in the Theatre

by **DAVID MAMET**

Directed by **ROBERT KALFIN**

June 14 – July 3

WORLD PREMIERE!

Splendor A Musical

Based on the novel by
EDWARD SWIFT

Book by **PETER WEBB**

Music by **STEPHEN HOFFMAN**

Lyrics by **MARK CAMPBELL**

Directed by **JACK HOFSSISS**

July 12 – July 31

WORLD PREMIERE!

By The Sea By The Sea By The Beautiful Sea

By **TERRENCE McNALLY**

JOE PINTAURD and

LANFORD WILSON

Directed by **JOE MANTELLO**

Aug 9 – Sept 4

order by phone **(516)725-9500** at the Long Wharf
Sag Harbor



COLEMAN CESSPOOL SERVICE, INC. SCHWAB's Cesspool Cleaning

PRECAST CESSPOOLS INSTALLED

A. COLEMAN

Phone: (516) 475-1733 878-2010

Locally Owned and Operated For Over 50 Years

1 CHAPEL AVENUE
EAST PATCHOGUE, NEW YORK 11772

RELIABLE SERVICE

GATEWAY PLAYHOUSE STAFF

Executive Producers Ruth and Stan Allan
Producers Paul Allan, John Hodge
Associate Producer Jeff Bellante
General Manager Gale Edwards
Company Manager Jerry Lapidus
Director/Choreographer Bob Durkin
Musical Director Nathan Hurwitz
Production Stage Manager Maribeth Hunter
Set Designer - FOREVER PLAID Neil Peter Jampolis
Resident Set Designer Michael Boyer
Lighting Designer James Fulton
Technical Director Chris Dono
Sound Designer Mark Clark
Master Electrician Wally Sudik
Costume Designer Gustave J. Pettit
Wardrobe Supervisor Jessica M. Minczeski-Anderson
Wardrobe Catherine LoCurto
Sound Operator Don Roberts
Technical Staff Joe Buck, Don Roberts, Mark Anderson, Rick Styles,
James Sturek, Brian Carroll, Greg Colichio, Melissa Viganto
Sound Consultant Dominick Sack
Box Office Manager Nancy Kana
Group Sales Christine Bellante
Box Office Staff Doris Lundegard, Nadine Hazard, Edith Menegus,
Jayme Tamillow, Jeff Monteith, Barbara Wright,
Renee Matthews, Jennifer Faulkner, Joan Hurley, Heather Moore
House Manager Jeff Monteith
Head Usher Al Pollog
Ushers Corinne Fagant, Jamie Fagant, Morgan Fagant,
Irene Fritz, Rita Wehner, Doris McHoytt,
Margot Whittemore, June Budd, Marie Trotto
House Staff Lynne Nofi, Gardner Fagant
Mike Payton, Richard Sells, Dayna Nofi
Maintenance/Landscaping Supervisor Bob Nofi
Painting/Maintenance Don Harrison
Concession Manager/Production Photographer Mil Kana
General Counsel Ann L. Nowak and Associates

FOREVER PLAID ORIGINALLY PRODUCED AT WEST VIRGINIA PUBLIC THEATRE MORGANTOWN, WEST VIRGINIA

Producer Ron Iannone
Production Stage Manager Myrle Curry
Musical Director Nathan Hurwitz
Lighting Design Michael Winkelman
Sound Design Joanna Staub
Technical Director Victor G. McQuiston
Properties Design Kathleen J. Padova

WARNING - The photographing or sound recording of any performance is strictly prohibited.

Gateway Playhouse now offers a wireless sound enhancement system
for the hearing impaired. Inquire at the box office for more information.

FIRE NOTICE: The exit indicated by a red light and sign nearest to the seat you occupy, is the shortest route to the outside. In the event of fire or other emergency, please do NOT run. WALK to that Exit. However, under normal circumstances, when leaving the Theatre, use the center rear exit. SMOKING is prohibited in the THEATRE, as required by a new Suffolk County NO SMOKING ordinance. Please do not smoke in any area designated "No Smoking." This renders the offenders subject to a fine or imprisonment or both.

BOX OFFICE HOURS

Tuesday thru Saturday 12:30 - 10:00 p.m.

Sunday 12:30 - 8:30 p.m. Monday 12:30 - 5:00 p.m.



CREDIT CARD ORDERS 286-1133 (Based on ticket availability)

Mailing Address: Box 5, Bellport, New York 11713



ROYAL OAK

Diner - Restaurant

Station Road and Sunrise Highway - Bellport, New York 11713

HOURS: 6:00 A.M. - 2:00 A.M. SEVEN DAYS A WEEK

TEL: (516) 286-5757

We do Great WEDDINGS!

We do Great COCKTAIL PARTIES!

1. We know this because our customers keep coming back for more!
2. We love working with people who really want a great party for their guests!
3. If you wish, you may inspect our kitchen and talk with our chef!
4. We can arrange for you to speak with some of our very happy customers!
5. We won't rush you, unless you're in a hurry!
6. Prices are always fair...they get lower as your number of guests go up!

KURTS CATERERS

Call 1-800-246-9948

OF

Free menus and estimates!

SMITHTOWN

Ask for Rich Youngren

Banquet Manager



KURTS CATERERS OF SMITHTOWN is the official opening night caterer
for the **GATEWAY PLAYHOUSE**



SEARLES GRAPHICS INC.

**Full Service Commercial Printing
and Design Studio**

1457 Montauk Highway

P.O. Box 2099

East Patchogue, NY 11772

Tel: (516) 286-2943 Fax: (516) 286-3281

Fill out the form and leave it in the box office.

Gateway is making plans for the 1996 summer season. Please rank
the following 20 shows in numerical order

(#1 - would most like to see, #20 - would least like to see.)

- | | |
|-------------------------------------|----------------------------|
| _____ Meet Me in St. Louis | _____ Joseph...Dream Coat |
| _____ Evita | _____ Sound of Music |
| _____ Sweet Charity | _____ Damn Yankees |
| _____ Cats | _____ Grease |
| _____ Jesus Christ Superstar | _____ Oliver |
| _____ Laughter on the 23rd
Floor | _____ Tommy |
| _____ Crazy for You | _____ Pippin |
| _____ Starlight Express | _____ Mame |
| _____ Cabaret | _____ 1940s Radio Hour |
| _____ Best Little Whorehouse... | _____ Sophisticated Ladies |

Other than the above or Phantom Of The Opera, Miss Saigon
and Les Miserables, what other show would you like to see at
Gateway next year?