

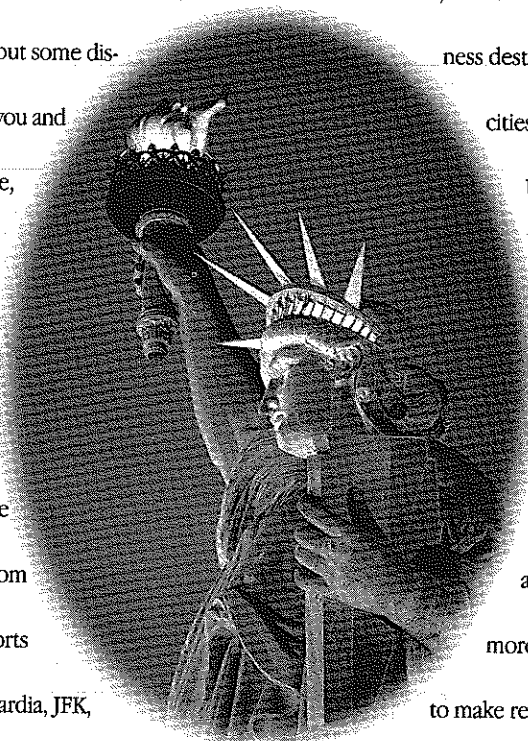
Over 200 Ways To Leave An Old Flame.



American Has Over 200 Departures Every Business Day To Over 300 Cities From Six Tri-State Area Airports.

Even the most passionate love affairs can benefit from a little time off. So, when it comes time to put some distance between you and the city you love, American and American Eagle® can help with more than 200 flights every single business day. From six tri-state airports including La Guardia, JFK, Newark, Long Island MacArthur, Newburgh Stewart and White Plains. It's never been

more convenient to fly to more than 300 cities worldwide, with service to key business destinations, major cities throughout the U.S., Europe, the Caribbean and Latin America. So, now it's never been easier to leave an old flame. For more information or to make reservations, call your Travel Agent or an American Airlines representative today at 1-800-433-7300.



American Airlines®
Something special in the air.®

American Eagle is a registered trademark of American Airlines, Inc., and is American's regional airline associate.

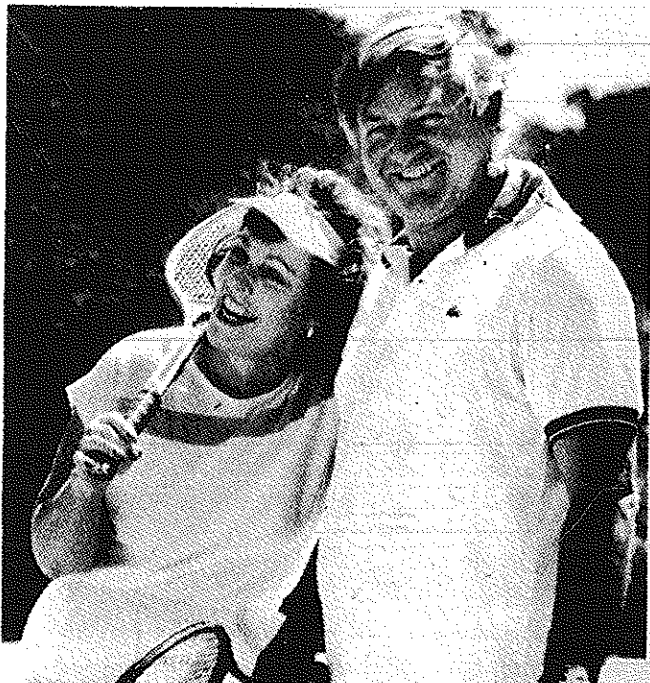
GATEWAY PLAYHOUSE

PLAYBILL

1995



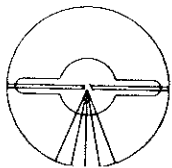
For peace of mind...
Take the time



MAMMOGRAPHY SAVES LIVES

Full Mammography accreditation by the American College of Radiology

BROOKHAVEN RADIOLOGIC ASSOCIATES, P.C.

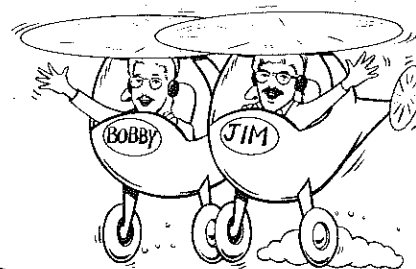


HOSPITAL ROAD PROFESSIONAL CENTER
250 Patchogue-Yaphank Road
East Patchogue, New York 11772
(516) 475-1030

WALTER P. QUIGLEY, M.D., D.A.B.R.
RONALD S. HAMES, M.D., D.A.B.R.
SETH O. MANKES, M.D., D.A.B.R.
STEVEN EPSTEIN, M.D., D.A.B.R.

MARK J. LODESPOTO, M.D., D.A.B.R.
IRA J. LANGER, M.D., D.A.B.R.
MARILYN LERNER, M.D., D.A.B.R.

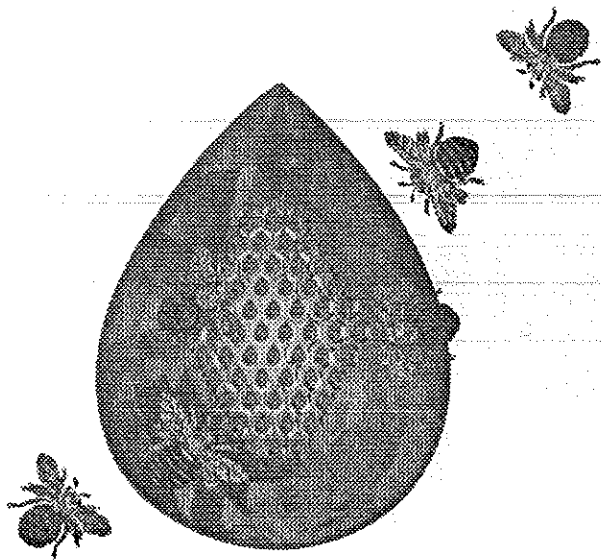
THE WALK BREAKFAST CLUB



DON'T WAKE UP WITHOUT US!

WALK ^{FM} 97.5

LONG ISLAND'S #1 MORNING SHOW!



Tremendous selection of fine jewelry,
period jewelry and collectables. Savings on
unredeemed  merchandise.
Written/Verbal and Estate Appraisals by
appointment.

O'Neill's

*"Servicing Manhattan To Montauk"
Jewelers and Collateral Loanbrokers*

**One East Main St., Patchogue
289-9899**

Sean & Veronica Cantwell, Kathryn Cantwell

ALLAN and ALLAN ARTS, LTD.
in association with
PAUL ALLAN and JOHN HODGE

presents

TONY TRIANO AND THADDEUS VALDEZ

in

**La Cage
aux Folles**

Music and Lyrics by
JERRY HERMAN

Book by
HARVEY FIERSTEIN

Based on the play "La Cage Aux Folles" by JEAN POIRET

with

JEANETTE LaVOY

SCOTT McGOWAN

ANGELA O'DONNELL

REGGIE WHITEHEAD

J. PAUL WARGO

DREW MORRIS

ANNE WAPLE DeNITTO

And Featuring The Notorious

"LES CAGELLES"

Associate Producer
JEFF BELLANTE

Lighting Designer
**CHRISTOPHER
J. LANDY**

General Manager
GALE EDWARDS

Costume Designer
CHUCK BATCHELOR

Production Stage Manager
MARIBETH HUNTER

Sound Designer
MARK CLARK

Musical Direction by
STEPHEN OREMUS

Choreography by
MARK KNOWLES

Directed by
ROBERT ENNIS TUROFF

LA CAGE AUX FOLLES is presented through special arrangement with
Samuel French, Inc., 45 West 25th Street, New York, NY 10010

Bellport Country Club

Presents L.I.'s Favorite Pre/Post Theatre Dining at:

Fairway's Cafe

Upstairs at the Bellport Country Club (Elevator Available)

Serving Lunch and Dinner Tues-Sun, 11:30 to Closing
Specializing in Succulent Steaks and Chops

Tuesday
"That's Italian"
Buffet Night
\$12.95
All You Can Eat
Served 4pm till Closing

Wednesday
Prime Rib Night
Complete Dinner
\$14.95
Served 4pm till Closing

Complete
Sunset Dinner
From **\$12.95**
Wed.-Sat: 4pm till 6pm
Sun. 4pm till Closing

Spectacular
Sunday Brunch
BUFFET
\$12.95 Served
11:30am - 3pm
Sunset Dinners Served
4pm till Closing



— Veranda Dining • Gift Certificates Available
South Country Road • Bellport Village • (516) 286-4227

Bayport House Ristorante



472-2444
291 Bayport Avenue
Bayport, New York

The Ultimate In Fine Dining

Specializing in Northern Italian/
Continental Cuisine
Open 7 Days • 5 pm

(516) 475-1790-1791
Fax (516) 475-1807

Emergency Boarding
Service
Call 289-1524

PATCHOGUE PLATE GLASS CO. INC.

GLASS—MIRRORS—PLEXIGLASS—STORE FRONTS
AUTO GLASS—INSURANCE CLAIMS

RON HENTHORNE
Manager

7 Railroad Ave.
Patchogue, NY 11772

MAYER'S Flower cottage

"We express your feelings — beautifully"

Flowers delivered anywhere
Weddings and parties our specialty

399 Medford Avenue, Patchogue, NY 11772 (516) 475-1779

Radisson. HOTEL ISLANDIA

Dinner Theatre Package

Enjoy a luxurious evening with a delicious five-course dinner
to enhance your theatre experience.

Package includes:

- ★ Two theatre tickets
- ★ Deluxe overnight guest accommodations
- ★ Five-course dinner for two
- ★ Indoor pool, whirlpool, and exercise facilities
- ★ Complimentary Showtime
- ★ Baby-sitting services available
- ★ Limousine service available by Tran-Star Executive Transportation



Package Price

\$89.00 Per Person

based on double occupancy
Package price does not include
tax. Package available 7 days a
week. Advance reservations
required.

Please call 516/232-3000
or 1-800-333-3333
and request
Dinner Theatre Package.

ACTING AND MUSICAL THEATRE TRAINING

storytelling & theatre games classes for 5-8 year-olds
all levels of acting for all ages thru adult
television auditioning and musical comedy classes



GATEWAY ACTING SCHOOL

now enrolling! 286-9014

LEARN FROM THE PROFESSIONALS!

Bellport CHOWDER HOUSE



An Eating and Drinking Tradition

FULL MENU

FULL BAR

Open Daily For Lunch and Dinner
Seven Days A Week

CHAMPAGNE BRUNCH SUNDAY NOON TILL 3 P.M.

Sunday - Thursday till 11:00 p.m. Friday & Saturday till Midnight

**SPECIALIZING IN FRESH LOCAL SEAFOOD
AT AFFORDABLE PRICES**

*Before and After the Show You'll Want to Meet and Eat At
THE CHOWDER HOUSE*

TAKEOUT

CATERING

19 Bellport Lane • Bellport Village • 286-2343

CAST OF CHARACTERS *(In Order of Appearance)*

Georges	THADDEUS VALDEZ*
"Les Cagelles"	
Chantal	BILL SHIDELER*
Hanna	KEVIN VERECKE
Phaedra	JAMES W. HARRINGTON*
Babette	MICHELLE CARANO
Derma	WILLIAM BELLAMY*
Angelique	CHARLENE CLARK*
Lo Singh	JAMES KINNEY
Nicole	KELLEY McCOLLUM*
Colette	ANGELA O'DONNELL
Francis	J. PAUL WARGO
Jacob	REGGIE WHITEHEAD*
Albin	TONY TRIANO*
Jean-Michel	SCOTT McGOWAN*
Anne	ANGELA O'DONNELL
Jacqueline	JEANETTE LaVOY*
Edouard Dindon/M. Renaud	DREW MORRIS*
Mme. Dindon/Mme. Renaud	ANNE WAPLE DeNITTO



* Actors employed in this production are members of Actors' Equity Association, the union of Professional Actors and Stage Managers in the United States.



The choreographer employed in this production is a member of the society of stage directors and choreographers, inc.

since 1898

ROE agency inc.

▲ INSURANCE
REAL ESTATE ▲

125 EAST MAIN STREET :: Patchogue, N.Y. (516) 475-4000



CABOT'S FLORIST



- WEDDINGS *Teleflora*
- FUNERALS
- HOUSE PLANTS
- HOSPITAL ARRANGEMENTS

- FRUIT BASKETS
- STUFFED ANIMALS
- BALLOON BOUQUETS
- DRIED & SILK ARRANGEMENTS

*Business
accounts
welcome*

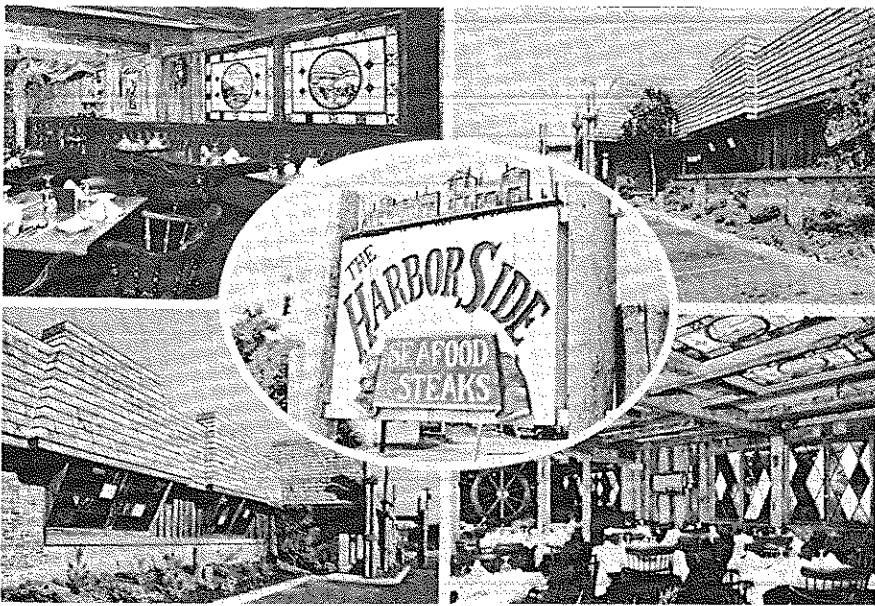
91 Medford Ave., Patchogue
(Rt. 112) South of Sunrise Hwy.
Minutes from Brookhaven Hospital
Next to Robertaccio Funeral Home

Order by Phone
We Accept Major Credit Cards

DAILY DELIVERIES

475-0408

Harbor Side Restaurant



"Incomparable Seafood Restaurant"

Complete Lunches from \$7.95 to \$10.95

Early Bird Menu

Mon.-Fri. 3:30 PM-5:45 PM

Sat. 3:30 PM-5:30 PM

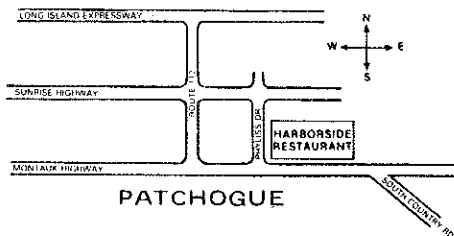
Starting at \$8.50

Appetizers from \$3.95 to \$5.95

Dinners from \$13.95 to \$22.95

*Let us plan
your next party
from 25 to 125*

Located On the Corner of
East Main St. (Rt 27A)
and Phyliss Drive



Open 7 days a week
at 11:30 am

Highly Recommended: ★★★
Newsday, Daily News
NY Post & The Practical Gourmet

503 E. Main Street
Patchogue, New York
(516) 654-9290

MUSICAL NUMBERS

TIME: Summer

PLACE: St. Tropez, France

ACT I

Overture

- "We Are What We Are" Les Cagelles
- "A Little More Mascara" Albin and Friends
- "With Anne On My Arm" Jean-Michel
- "With You On My Arm" (Reprise) Georges and Albin
- "Song On The Sand" Georges
- "La Cage Aux Folles" Albin and Les Cagelles
- "I Am What I Am" Albin

ACT II

Entr'acte

- "Song On The Sand" (Reprise) Georges and Albin
- "Masculinity" Georges, Albin and Townspeople
- "Look Over There" Georges
- "Cocktail Counterpoint" Georges, Dindon, Mme. Dindon,
Jacob and Jean-Michel
- "The Best of Times" Albin, Jacqueline and Patrons
- "Look Over There" (Reprise) Jean-Michel

Grand Finale

ACT III TAKES PLACE AT



Patchogue Floral's Fantasyland



COME
BROWSE

LARGEST EMPORIUM CATERING TO
THE ESTHETIC PROCUROR OF UNUSUAL HOME DECOR —

Giftware - Art Crafts - Custom Permanent Arrangements

10 Robinson Avenue • East Patchogue • 475-2059

WBLI

106.1

The best on Long Island is
also the most **POWERFUL**
station on Long Island...

now broadcasting
at **49,000** watts!!

3090 Route 112
Medford • Long Island
732-1061

WHO'S WHO (in alphabetical order)

WILLIAM BELLAMY (*Derma*) is a native of the Tampa Bay area and a graduate of U.C.F. with a B.A. degree in modern dance. He has worked as a concert dancer in various dance companies in Chicago. Florida credits include GRAND HOTEL, CAN CAN, A CHORUS LINE, EVITA, and most recently, Alvin in ANNIE WARBUCKS. Love to my two best friends, Frances and Greg.

MICHELLE CARANO (*Babette*) returns to Gateway, having performed in this season's CAROUSEL and 1994's THE WILL ROGERS FOLLIES. Past experience includes the National Tour of SUGAR BABIES, starring Phil Ford and Mimi Hines. Michelle also created the role of Fairlight in the musical premiere of CHRISTY, based on the best-selling book and TV series. Regional credits include Anita in WEST SIDE STORY and Sister Robert Anne in NUNSENSE. She has been seen singing and dancing her way through the Caribbean for Commodore Cruise Lines. As always, Michelle thanks her parents for their love and support.

CHARLENE CLARK (*Angelique/Dance Captain*) is happy to be back working for the Gateway organization. She has been in show business most of her life—acting, singing and dancing all over the world. Aside from choreographing over 20 professional productions, she has exhibited her versatility in the title role of SWEET CHARITY, as Cassie in A CHORUS LINE, Joan in DAMES AT SEA, Agnes Gooch in MAME, Gypsy Rose Lee in GYPSY and Angel in THE BEST LITTLE WHOREHOUSE IN TEXAS.

ANNE WAPLE DeNITTO (*Mme. Dindon, Mme. Renaud*) has performed leading roles from Dolly Levi in HELLO, DOLLY!, Agnes in I DO! I DO!, and cousin Nettie in CAROUSEL to Buttercup in H.M.S. PINAFLORE. This multi-talented actress/singer/cellist has toured with The Press Gang throughout the United States, Britain and Poland, and she can be heard on the album "Chesapeake Sailor's Companion." Further tours have taken her to the Far East in OLIVER! starring Bill Hayes and THE SOUND OF MUSIC. When not in the theatre, Anne can be found in any garden or out in the ocean scuba diving, and always with camera!

JAMES W. HARRINGTON (*Phaedra*) choreographed female impersonators in St. Louis. As his female persona, "Georgia Brown," he performed "en travesti" for 10 years, including an appearance on "Sally Jesse Raphael" and a portrayal of the legendary Josephine Baker. Hanging up his wigs and dresses, he moved to Florida to perform on cruise ships, hotels, and area stages. Credits include CAN-CAN, CALL ME MADAM, and GRAND HOTEL. With this performance, James (and Georgia) have come full circle.

JAMES KINNEY (*Lo Singh*) is a resident of Jacksonville, where he's been performing at the Alhambra Dinner Theatre as Slim in OKLAHOMA!, Young Carriere in PHANTOM, Paul in A CHORUS LINE and Mendel in FIDDLER ON THE ROOF. He is also a student and company dancer with the Florida Ballet and recently performed in THE NUTCRACKER as Dr. Drosselmeier and the Arabian.

JEANETTE LaVOY (*Jacqueline*) is extremely pleased to be making her debut at Gateway as Jacqueline. Jeanette recently returned from Florida where, last season, she debuted at the Gold Apple (Venice) as the Widow in THE MERRY

WIDOW. Other favorite shows include THE SOUND OF MUSIC, THE KING AND I, JACQUES BREL, A LITTLE NIGHT MUSIC, and THE DAY AFTER THE FAIR. Since returning home, LaVoy recently sang for Mayor Guillani and the U.N. Delegation at Gracie Mansion; she also lectures on grand opera and concertizes as a singing pianist for the NY Public Library System.

KELLEY McCOLLUM (*Nicole*) Having just completed a production of FOREVER PLAID, this Texan has had to make quite an adjustment from wing-tips and a dinner jacket to high heels and pantyhose. But Kelley has already proven his versatility in roles ranging from Eugene in GREASE and Will Parker in OKLAHOMA! to John Dickinson in 1776. As for his looks as a woman—well, he has a great personality.

SCOTT MCGOWAN (*Jean-Michel*) is excited about returning to a role that helped him join the actors' union some hrm-mm years ago. Between then and now, he has toured extensively through the states and Europe, and has appeared at the Gateway Playhouse as Jasper in DROOD and Cinderella's Prince in INTO THE WOODS. Scott recently portrayed the irascible Tony Whitcomb at the Kennedy Center in its production of SHEAR MADNESS. He has also been spotted on "Law and Order."

DREW MORRIS (*Edouard Dindon/M. Renaud*) has appeared in over 75 productions including a workshop production in Miami directed by legendary Broadway director/playwright George Abbott. Internationally Drew toured with OLIVER! to Singapore and Malaysia and appeared with the USO in the Cayman Islands. He has performed on-stage with both Davy Jones and Bill Hayes. Drew is also a choreographer, director, and teacher with a Bachelor's degree in music education from FSU.

ANGELA O'DONNELL (*Anne/Colette*) was recently seen at the Actors' Playhouse in Miami as Val in A CHORUS LINE. Other professional credits include EVITA, WEST SIDE STORY, FUNNY GIRL, THE MUSIC MAN, FIDDLER and CAMELOT. She can also be seen next Fall as the host of a new, nationally syndicated TV show, "Jelly Bean Jungle." Thank you - Mom, Dad, Pepper and friends - for the inspiration.

BILL SHIDELER (*Chantal*) joins LA CAGE after playing Frankie in Golden Apple Dinner Theatre's encore run of FOREVER PLAID. This is not Bill's first experience portraying a member of the fairer sex. He recently returned from Singapore, where he played the dynamic transvestite, Rosie, in BUGIS STREET, and he also kicked up his "heels" as Chantal in the Bucks County LA CAGE with TV's Gene Rayburn and Isabel Sanford.

TONY TRIANO (*Albin*) has just completed a year-long stint at the Alhambra Dinner Theatre in Jacksonville playing such roles as Ali Hakim in OKLAHOMA!, Joseph Burquet in PHANTOM, The King in BIG RIVER, The Padre in MAN OF LA MANCHA and Scrooge in CHRISTMAS CAROL. He was seen nationally as Cornelius Hackl in HELLO DOLLY! starring the late Ginger Rogers, and as Motel in FIDDLER ON THE ROOF starring Herschel Bernardi. In New York, Tony appeared as Mortimer in the Sullivan Street production of THE FANTASTICKS.

THADDEUS VALDEZ (*Georges*) Originally from Colorado, Thaddeus now calls Chicago home. Regional credits include appearances at Seattle

Gateway Playhouse announces the opening of its new
Ticket Booth at the Smith Haven Mall

Tickets for all performances • Gift Certificates

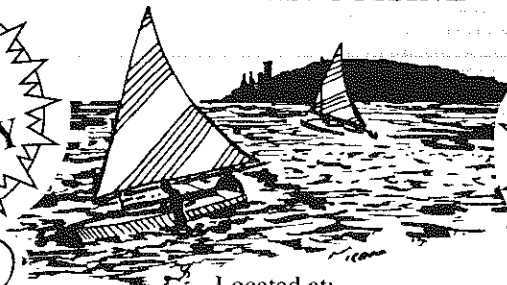
Located directly across from Cineplex Odeon Cinemas
Open Monday thru Saturday 10:00 AM to 9:00 PM • Sunday 11:00 AM to 6:00 PM



Porto Bello
RISTORANTE

FINE ITALIAN CUISINE

PIZZA
PASTA
PASTRY



Seafood
Cappuccino
Cocktails

Capture
the
Moment

Located at:
14 STATION RD. • BELLPORT, LI
for reservations or take out, call:
286-3300 • 286-3344

HOURS:
Mon-Thurs 11am-11pm
Fri, Sat 11am-1am
Sun 11am-11pm

The **Nautilus** FITNESS CENTER Of Bellport

WE OFFER: • Heart Rate Monitoring • Blood Pressure Testing • Body Fat Composition Testing • Personalized Program Sheets • Prescheduled Private Workouts • Individual Attention From Certified Instructors • Before And After Photography

Free
TRIAL
WORKOUT

120 S. Country Road, Bellport Village 286-4899



FAX 516-286-6080 516-286-0510
SENTRY HARDWARE
BELLPORT HARDWARE
PITTSBURGH PAINTS
9 BELLPORT LANE
ARTHUR NADEAU BELLPORT, NY 11713

Tel: 286-0395
LYONS
FUEL OIL CO., INC.
23 Station Road, Bellport, N.Y.


WALLEN'S
IGA MARKET
Main Street • Bellport, N.Y.
QUALITY FOOD IN A FRIENDLY
NEIGHBORHOOD MARKET
FULL LINE OF:
Choice Meats & Poultry, Groceries
Produce & Dairy
HOURS:
8-7 p.m. - Mon. - Thurs. 8-6 p.m. - Saturday
8-8 p.m. - Friday 8-1 p.m. - Sunday



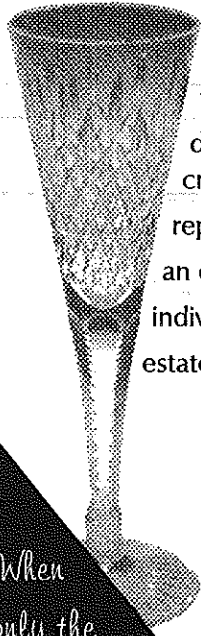
BELLPORT PAINT & WALLPAPER, INC.
COMPLETE PAINT & WALLPAPER SUNDRIES
CABOT STAINS • OLYMPIC PAINT & STAINS
145 South Country Rd.
Bellport, NY 11713
516-286-5850

THE BANK OF NEW YORK
LONG ISLAND REGION
BELLPORT BANKING
OFFICE LOCATED AT:
32 Station Road
Bellport, New York 11713
Virginia Asero
Assistant Vice President
(516) 286-4200
Member FDIC 1986 The Bank of New York

NEW VISIONS
UNISEX HAIR DESIGNERS
full service hair and
nail salon
Create the Look
that Adds
Dimension and Style
to Your Active Life
MANICURES, PEDICURES, WAXING
155 S. Country Road, Bellport, N.Y. 11772
(516) 286-0216



Bellport Delicatessen
Catering is our Specialty
124 Main Street, Bellport
(516) 286-0444 • FAX 286-6666
Open 5:30 a.m. - 10:00 p.m. 7 Days a Week
Open for Breakfast and Lunch Specials
Homemade Muffins • Gourmet Coffees



Long Island's quality, full-service jeweler for over 135 years...
 fine jewelry and gems for all occasions...
 diamonds and pearls, gold and silver, watches and clocks,
 crystal, giftware and fine writing instruments...
 repairs are completed on the premises...
 an expert gemologist is always available...
 individual appraisals while you watch...
 estate jewelry purchased (collections or individual pieces).

Since 1860

F. Stadtmuller

JEWELERS

18 MAIN STREET • DOWNTOWN SAYVILLE
 (516) 589-3300

MAJOR CREDIT CARDS WELCOMED

When
 only the
 best will do...

South Country Inn



Fine Dining At

Moderate Prices

Extensive Menu

Special Attention

Continental Cuisine
 Early Bird Specials

Given to Theater Goers...We'll
 get you to the show on time!

Open
 12 Noon
 to 11 PM
 Daily

Theater Groups

Welcome for Lunch and Dinner

668 South Country Road, East Patchogue

Open 6 days **758-1919** Closed Monday

516-726-8000



**Ann L. Nowak
 &
 Associates**
 ATTORNEYS AT LAW

Credit Repair & Debt Relief
 Uncontested Divorces
 Wills and Estates
 Bankruptcy

General Counsel to the
 Gateway Playhouse

Deerfield Green, P.O. Box 1290
 Water Mill, NY 11976-1290

ALL COUNTY

Home Security Systems
 Residential • Commercial



WIRELESS

- Burglar Alarms
- Heat Detectors
- Fire
- Central Station
- Freeze Alert
- Medical Alert

**FREE
 ESTIMATES**

Authorized Distributor For
 Dynamark • AllGuard
 Safety Security Products

(516) 286-8330

All County Home Security Systems
 680 South Country Road
 East Patchogue, New York 11772

THE GREAT SOUTHBAY
 INN



See The Show
 And Stay The Night

Also Serving Breakfast

160 South Country Road
 Bellport, NY 11713
 (516) 286-8588

Gude
 photography
 8 W. Main St.
 Patchogue NY
 654-8093

Portraits
 Restorations

Playhouse Plumbing Done By
**Beach Plumbing &
 Heating, Inc.**

Phone 281-4396 • John Vilano
 Alterations Repairs New Work

Volunteers Wanted

Gateway Playhouse is seeking
 volunteer ushers to join its
 Volunteer Corps

Call 286-0555 for more
 information

STAGE DOOR Dance SCHOOL OF

BALLET • POINT • TAP • JAZZ • TAP & BALLET COMBO • AEROBIC EXERCISE • STEP CLASSES

Fall Registration
Begins August 14

PLAZA 101
(ACROSS FROM CALDOR)
25 PATCHOGUE-YAPHANK RD.
EAST PATCHOGUE
654-8858

Pre-School Thru Adults
Family Discounts

Artistic Director
Diane Giattino

Celebrating Our
20th Anniversary



Setting the Trend for Restaurants of the 90s
May we suggest our gourmet specialty pastas, fresh local seafood, steaks & homemade desserts
"Just Close Enough To Be Your Favorite Restaurant"

**SUNDAYS
WHOLE LOBSTER
Special
\$6.95
(At The Bar Only)**

\$5.00 OFF LUNCH
MIN. 2 LUNCH ENTREES PURCHASED
Taxes & Gratuities Not Included
With Coupon, not to be combined with any other offers. One coupon per visit. Expires 12/31/95

\$10.00 OFF DINNER
MIN. 2 DINNER ENTREES PURCHASED
Taxes & Gratuities Not Included
With Coupon, not to be combined with any other offers. One coupon per visit. Expires 12/31/95

Friday FREE Friday COMEDY PASS
With Purchase of Paid Admission
\$12.50 VALUE
Starts at 10:00 am
With Coupon, not to be combined with any other offers. One coupon per visit.
Valid Friday & Saturday only. Expires 12/31/95

Saturday FREE Saturday COMEDY PASS
With Purchase of Paid Admission
\$12.50 VALUE
Starts at 10:00 am
With Coupon, not to be combined with any other offers. One coupon per visit.
Valid Friday & Saturday only. Expires 12/31/95

**HAPPY HOUR
CATERING WITH A FLAIR
LIVE MUSIC
COMEDY • SAT. & SUN.**

Borderline CAFE & Comedy Club
2647 MONTAUK HWY. BROOKHAVEN
286-8077



"We're Patient People"

AMATO FAMILY CHIROPRACTIC
16-2 STATION ROAD
BELLPORT, NY 11713
516-286-2300
Infant, Child & Adult Care
Dr. Frank J. Amato

Coming to Gateway

A Delightful Musical of the Wonder Years

Forever

September 6 - September 23



If you enjoyed BEEHIVE you'll absolutely love **FOREVER PLAID**, the musical that recalls some of the most enjoyable and cherished moments in your life - your first date, first prom, engagement party, wedding day. All the songs that were popular as a generation grew-up following World War II into the 50s and 60s. **FOREVER PLAID** is loaded with comedy surprises, too! WABC-TV said, "Perfect, a little bit of heaven for all of us." **FOREVER PLAID**, a new nostalgia is born!

The Ultimate Beatles Revue
September 27 - October 8

Season Ticket Holders
Take \$3.00 Off All
"Twist and Shout!" Tickets!

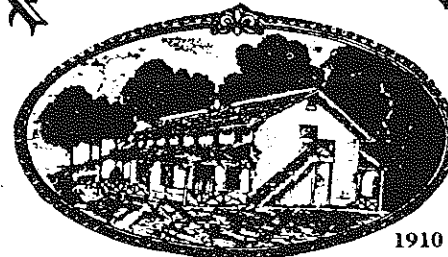
Special Added Attraction



The Beatles! John, Paul, George, and Ringo, who changed the history of music that affected the entire world. We have acquired exclusive rights to the sensational **Twist and Shout!**, an incredible simulation of the "Fab-Four," using members of the Broadway and National Touring Company. Gateway will present these Sing-A-Like, Look-A-Like Beatles performing all the great Beatle tunes from "I Wanna Hold Your Hand" and "Yesterday," to "Penny Lane" and "Hey Jude." Take a trip on the Magical Mystery Tour with the Beatles. It's an experience you'll never forget.

Wine Grove Inn

On The Swan River



1910

Open Weekdays
11:30 A.M.
Saturday
11:30 A.M.
Sunday
12:00 P.M.

Daily
Blackboard
Specials!

Dinner Served 4 PM to 10 PM
Weekdays & Saturdays • Sundays 12 PM to 9 PM

EARLY BIRD SPECIALS

Monday thru Friday 4 PM to 6 PM
Sundays 12 PM to 5 PM

LUNCH

Monday thru Saturday
11:30 AM to 3:00 PM

SUNDAY BRUNCH

12:00 PM to 3:00 PM

CHAPEL AVE. & FIRST ST. • EAST PATCHOGUE, N.Y.
OPEN 6 DAYS A WEEK **475-9843** CLOSED TUESDAY

WHO'S WHO (continued)

Repertory Theatre, Milwaukee Repertory Theatre, the Alliance Theatre Company in Atlanta, and tours of South America and the Pacific Northwest. Favorite roles include Lancelot in CAMELOT, Petruchio in THE TAMING OF THE SHREW, Captain Von Trapp in THE SOUND OF MUSIC and El Gallo in THE FANTASTICKS. However, his favorite role remains as father to a 16-year-old beauty named Amber.

KEVIN VERECKE (*Hanna*) received his B.F.A. in Dance from SUNY Purchase. Since graduating in 1989, he has worked at home in Atlanta and in the Miami area. Shows include MAN OF LA MANCHA, EVITA and A CHORUS LINE.

J. PAUL WARGO (*Francis*) recently appeared in Florida playing William in THE DRUNKARD. Some stage credits include SHE LOVES ME, A CHORUS LINE, BRIGHTON BEACH MEMOIRS, FORUM, BABY, THE APPLE TREE, COME BLOW YOUR HORN and A CHRISTMAS CAROL. He holds a Bachelor of Arts degree from Salve Regina University in Newport, Rhode Island.

REGGIE WHITEHEAD (*Jacob*) appeared in the original Golden Apple production of LA CAGE AUX FOLLES as Jacob, and also starred in Golden Apple's production of AIN'T MISBEHAVIN'. Recently, he has been busy with shows such as A CHORUS LINE and DANCIN' WITH THE ONE I LOVE. Some of Reggie's other shows include DREAMGIRLS, GOLDDIGGERS OF 1633, THE WIZ, PURLIE, YOU'RE A GOOD MAN CHARLIE BROWN, CHICAGO, WEST SIDE STORY, and PIPPIN.

PAUL ALLAN and JOHN HODGE (*Producers*) Messrs. Allan and Hodge have been theatrical partners since 1982. Between the two of them

they have over 25 years of experience ranging from Broadway and Off-Broadway to Regional Theater and the last 14 years of Gateway's productions. They worked on the New York City productions of GROUCHO, DIAMONDS, JUST SO, and PACIFIC OVERTURES. They have produced the National and International tours of ANYTHING GOES, SONG AND DANCE, CAMELOT, A CHORUS LINE, SOUTH PACIFIC, 42nd STREET, MAN OF LA MANCHA and OLIVER. They had the distinguished honor of bringing the first American produced musical to Singapore with their touring production of SOUND OF MUSIC in 1990. For the last three years they have been operating Gateway's Candlewood Playhouse in New Fairfield, Connecticut. Upcoming projects include the National Tours of SHENANDOAH, SWEET CHARITY and an International Tour of WIZARD OF OZ.

ROBERT ENNIS TUROFF (*Director*) has directed more than 500 musicals and plays during his dynamic theatrical career. He has directed such top stars as Morgan Fairchild, Van Johnson, Ginger Rogers, Dale Robertson, Dick Van Dyke, Chita Rivera, Bill Hayes, Betty White, Frankie Laine, and opera stars Dorothy Kirsten, Robert Merrill, and Richard Tucker. At City Center in New York, he directed the world premiere of the Jerome Moross minstrel-opera GENTLEMEN BE SEATED, and off-Broadway, he guided the revival of the award-winning THE GOLDEN APPLE and the Jerry Herman musical MADAME APHRODITE. Robert served as resident director of Theatre Under the Stars, Atlanta; National Opera, Raleigh, NC for four years; Ford Foundation Opera, NY; Pocono

WHO'S WHO (continued)

(PA) Playhouse; and Casa Manana Musicals, Ft. Worth. He is author of the musical HELLO SUCKER and also wrote CHEERFUL LITTLE EARFULL, a musical revue of Harry Warren songs. He is a member of AEA and a charter member of SSD&C and of the American Dinner Theatre Institute. In 1971, he founded, and has served to date as Executive Director of Golden Apple Dinner Theatre in Sarasota, Florida, an Equity theatre that has presented over 200 productions; he is also president of Coastal Theatre Productions, Inc.

STEPHEN OREMUS (*Musical Director/Pianist*) returns to Gateway after having served as Assistant Musical Director for CAROUSEL. Prior to Gateway, he most recently played the world premiere of the Richard Adler/Bill Davis musical OFF KEY at George Street Playhouse. Other credits include: THE GOODBYE GIRL, HELLO DOLLY, CABARET, BABY, JERRY'S GIRLS (starring Patrice Munsel), MUSIC MAN, JOSEPH... GEORGE M!, and the workshop production of ZOMBIE PROM in NYC. He musical directed and arranged "Radio Warp," a cabaret at Don't Tell Mama's in NYC and has accompanied numerous singers - including Roslyn Kind. Mr. Oremus has musical directed over thirty shows including Regional Theatre, Dinner Theatre, and Summerstock. He has served on the faculty of The Performer's Theatre Workshop, and is a graduate of Berklee College of Music, Boston. Thanks to family, friends, Phyllis, and most of all - D.C.

MARK KNOWLES (*Choreographer*) has choreographed over 200 productions, ranging from the South American premiere of LA CAGE AUX FOLLES in Buenos Aires, Argentina, to the

Swan Bakery

"Serving the Community Since 1946"

Celebrating our second anniversary under new ownership

Official Baker to the Gateway Playhouse

Guy J. Gagliano Robert E. Roode

15 South Country Road
East Patchogue, N.Y. 11772

Tel. (516) 475-9626

YOUR CONSIDERATION IS APPRECIATED

All Performances at Gateway Playhouse finish with final curtain calls. As a courtesy to patrons and performers alike, please stay with us until the curtain calls have ended and the house lights have come up.

If you must leave the theatre during the performance for any reason, please use the center doors at the rear of the theatre only.



Always Gives You
100%

Varney's

MUSSELS
Served with red or white sauce . . . \$5.95
L.I. STEAMERS . . . \$5.95

SEAFOOD FRA' DIAVOLO
Includes: clams, mussels, crab legs, scallops,
shrimp-red or white sauce on bed of
linguine . . . \$18.95
BBQ BABY BACK RIBS . . \$14.95
CHICKEN FRANÇAISE . . \$12.95

EVERY WEDNESDAY
BONELESS SHELL STEAK
Includes: cup of soup, salad or coleslaw,
bread, linguine, rice or fries,
ice cream & coffee or tea \$12.95

BEER • WINE • COCKTAILS
Open 7 Days: 11am-9pm - Fri. & Sat. till 10pm
Sun. 5-9pm

Daily Lunch Specials
2109 Montauk Highway, Brookhaven

286-9569



Old Inlet Inn



The Fine Dining Experience
Brian Finegan, Chef

Dinners from 6:00 PM
Wed. & Thurs. from 5:00 PM
Sunday Brunch 1-3:00 PM
Sunday Dinner 3-7:00 PM

Old Fashioned Nor'Eastern
Lobster Bake every Wednesday
\$25⁰⁰/person

Show Tune Sing-A-Longs on
Fri. & Sat. with Jim Ahrend
at the piano 9-1:00 AM

Patio Dining

108 So. Country Road
Bellport 286-2650

1580 AM
wlim
 LONG ISLAND MUSIC

**Glenn Miller, Johnny Mathis, Benny Goodman,
 Nat King Cole, Frank Sinatra, Dinah Shore,
 Barbra Streisand, Perry Como, Doris Day,
 and the Lettermen...**

WHERE HAVE THEY GONE?

with
JACK ELLSWORTH
TO THE TOP OF THE DIAL

1580 AM Stereo



**LONG ISLAND MUSIC BROADCASTING
 CORP.**

Woodside Avenue, Patchogue, L.I. 11772
 (516) 475-1580

opening ceremonies of the Winter Cities Carnival in Anchorage, Alaska. Other shows include SINGIN' IN THE RAIN, MY ONE AND ONLY, WEST SIDE STORY, GREASE, GUYS & DOLLS, ME AND MY GIRL, and numerous others. This past year, he had the pleasure of choreographing the off-Broadway hit, HYSTERICAL BLINDNESS, in NY. Mark's film and TV credits include THE ICE PIRATES for MGM, SMALL WONDER for Fox, and BOONE for CBS. Besides choreographing and also directing, Mark has his own tap dance act and is the featured vocalist with the Bill Davies Big Band Orchestra. He lives in Los Angeles, and is on the faculty of the American Academy of Dramatic Arts.

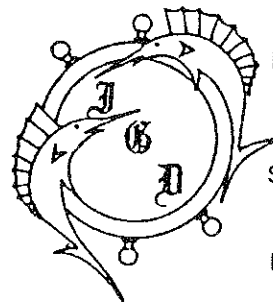
MARIBETH HUNTER (*Production Stage Manager*) comes to Gateway after stage managing SHLEMIEL THE FIRST for American Repertory Theatre in Cambridge and its pre-Broadway tour to Florida, Philadelphia, and Stamford, CT. Now a resident of Philadelphia, her stage management work there has included HEARTS BEATING FASTER, a new play by Ralph Pape at Cheltenham Center for the Arts, THE MYSTERY OF LOVE, an original musical by Seku Sundiata and Doug Booth for the American Music Theatre Festival, and KABUKI ACHILLES, a co-production between Illinois Kabuki Theatre and People's Light and Theatre Company, where she was the resident production stage manager for two years. ACHILLES was performed in Illinois and Philadelphia, and toured to Cyprus, Hungary, and Japan.

CHUCK BATCHELOR (*Costume Designer*) is the resident costume designer for Costume World, the nation's third largest costume outlet. He studied design at Slippery Rock University in Pennsylvania and at Point Park College in Pittsburgh. Formerly,

Chuck was the resident costume designer with the Pittsburgh Lab Theatre and Music Theatre North in Potsdam, N.Y. Among the recent shows Chuck has designed are GRAND HOTEL for the Royal Palm Dinner Theatre of Boca Raton, Florida; Carlton Davis' New England tour of PHANTOM and also in Florida, The Gold Coast Opera's production of SHOWBOAT. Chuck prides himself on insuring quality, originality and above all talented service to all companies and organizations.

CHRISTOPHER J. LANDY (*Lighting Design*) has been designing for Gateway and Candlewood Playhouses for the last two seasons. His designs have been seen at the Centennial Theatre Festival, TSOA, Shawnee Playhouse, Millbrook Playhouse, Wagner College, Snug Harbor, and an industrial for Microsoft. Other credits include Maria Benitez Dance Company, The Goodman Theatre, Pepsico Summerfare, Downtown Cabaret, and 2nd Ave. Dance Company. Chris toured nationally with Gateway's SONG AND DANCE, AIN'T MISBEHAVIN' and the Far East with SOUTH PACIFIC. He is attending NYU, pursuing an MFA in lighting and set design.

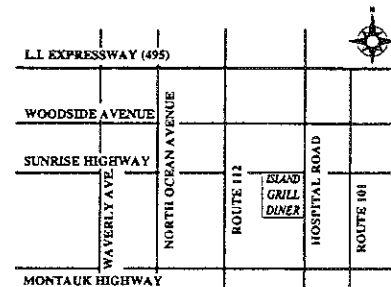
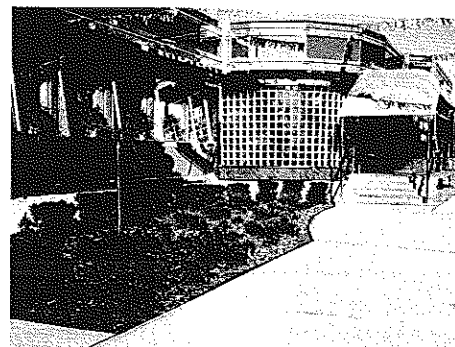
MARK CLARK (*Sound Designer*) is celebrating his fourth year as Gateway's Resident Sound Designer; he has designed all mainstage productions, and especially enjoyed working on PHANTOM, ONCE ON THIS ISLAND, and GRAND HOTEL. Mark travelled to the Far East with GREASE and SOUTH PACIFIC, with stops in Hong Kong, Malaysia, Singapore, and Indonesia, and also toured the United States and Canada with MY FAIR LADY and 42nd STREET.



PETER'S NEW ISLAND GRILL
DINER — RESTAURANT

We specialize in:
 Seafood • Steaks • Chops
 Homemade Baked Goods
OPEN 24 HOURS
INCLUDING ALL HOLIDAYS
 Catering & Private Parties

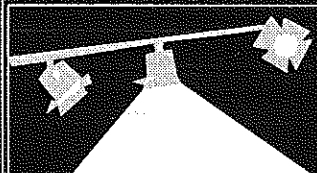
- Special Breakfast Menu
- Sautéed Menu
- Pasta Menu
- Special Island Grill Seafood Combinations
- Complimentary Glass of Wine with Lunch or Dinner
- Special Continental Menu
- 15% Discount for Senior Citizens



140 HOSPITAL ROAD • SUNRISE HIGHWAY • E. PATCHOGUE
516-475-2110 • FAX 516-475-2180

BAY STREET THEATRE

1995 MAINSTAGE SEASON



A Life in the Theatre

by DAVID MAMET

Directed by ROBERT KALFIN

June 14 – July 3

WORLD PREMIERE!

Splendor

A Musical

Based on the novel by EDWARD SWIFT

Book by PETER WEBB

Music by STEPHEN HOFFMAN

Lyrics by MARK CAMPBELL

Directed by JACK HOFSSISS

July 12 – July 31

WORLD PREMIERE!

By The Sea

By The Sea

By The Beautiful Sea

By TERENCE McNALLY

JOE PINTAURO and

LANFORD WILSON

Directed by JOE MANTELLO

Aug 9 – Sept 4

order by phone **(516)725-9500** at the Long Wharf Sag Harbor



COLEMAN CESSPOOL SERVICE, INC. SCHWAB's Cesspool Cleaning

PRECAST CESSPOOLS INSTALLED

A. COLEMAN

Phone: (516) 475-1733 878-2010

Locally Owned and Operated For Over 50 Years

1 CHAPEL AVENUE
EAST PATCHOGUE, NEW YORK 11772

RELIABLE SERVICE

GATEWAY PLAYHOUSE STAFF

Executive Producers	Ruth and Stan Allan
Producers	Paul Allan, John Hodge
Associate Producer	Jeff Bellante
General Manager	Gale Edwards
Company Manager	Jerry Lapidus
Director	Robert Ennis Turoff
Choreographer	Mark Knowles
Musical Director	Stephen Oremus
Casting Director	Robin Joy Allan
Production Stage Manager	Maribeth Hunter
Resident Set Designer	Michael Boyer
Lighting Designer	Christopher J. Landy
Technical Director	Chris Dono
Sound Designer	Mark Clark
Master Electrician	Wally Sudik
Costume Designer	Chuck Batchelor
Wardrobe Supervisor	Jessica M. Minczeski-Anderson
Wardrobe	Catherine LoCurto, Brenda Abbondandolo
Dance Captain	Charlene Clark
Props	David Dovell
Technical Staff	Joe Buck, Don Roberts, Mark Anderson, Rick Styles, James Sturek, Allison Ronis, Brian Carroll, Greg Colichio
Sound Consultant	Dominick Sack
Children's Theatre Director/Musical Director	Matthew Karris
Children's Theatre Orchestrator	Jim Ahrend
Children's Theatre Stage Manager	Maribeth Hunter
Box Office Manager	Nancy Kana
Group Sales	Christine Bellante
Box Office Staff	Doris Lundegard, Nadine Hazard, Edith Menegus, Jayme Tamilow, Jeff Monteith, Barbara Wright, Renee Matthews, Jennifer Faulkner, Nicole Marie La Flair, Joan Hurley, Heather Moore
House Manager	Jeff Monteith
Intern	Tara Bracco
Head Usher	Al Pollog
Ushers	Corinne Fagant, Jamie Fagant, Morgan Fagant, Irene Fritz, Rita Wehner, Doris McHoyft, Margot Whittemore, June Budd, Marie Trotto
House Staff	Lynne Nofi, Gardner Fagant, Mike Payton, Richard Sells, Danya Nofi, Harry Dean
Maintenance/Landscaping Supervisor	Bob Nofi
Painting/Maintenance	Don Harrison
Concession Manager/Production Photographer	Mil Kana
General Counsel	Ann L. Nowak and Associates

Costumes by Costume World, Pompano Beach, Florida

La Cage Aux Folles Originally Produced at Golden Apple Dinner Theatre, Sarasota, Florida

Producer	Robert Ennis Turoff
Production Coordinator	Lyla FitzGerald
Business Manager	Felicia Antolik
Musical Director	Michael Sebastian
Production Stage Manager	Jon Merlyn
Lighting Design by	Benjamin M. Turoff
Technical Director	Geoff Hebert
Assistant to the Choreographer	Charlene Clark

WARNING - The photographing or sound recording of any performance is strictly prohibited.

Gateway Playhouse now offers a wireless sound enhancement system for the hearing impaired. Inquire at the box office for more information.

FIRE NOTICE: The exit indicated by a red light and sign nearest to the seat you occupy, is the shortest route to the outside. In the event of fire or other emergency, please do NOT run. WALK to that Exit. However, under normal circumstances, when leaving the Theatre, use the center rear exit. SMOKING is prohibited in the THEATRE, as required by a new Suffolk County NO SMOKING ordinance. Please do not smoke in any area designated "No Smoking." This renders the offenders subject to a fine or imprisonment or both.

BOX OFFICE HOURS

Tuesday thru Saturday 12:30 - 10:00 p.m.

Sunday 12:30 - 8:30 p.m. Monday 12:30 - 5:00 p.m.



CREDIT CARD ORDERS 286-1133 (Based on ticket availability)

Mailing Address: Box 5, Bellport, New York 11713



ROYAL OAK

Diner - Restaurant

Station Road and Sunrise Highway - Bellport, New York 11713

HOURS: 6:00 A.M. - 2:00 A.M. SEVEN DAYS A WEEK

TEL. (516) 286-5757

We do Great WEDDINGS! We do Great COCKTAIL PARTIES!

1. We know this because our customers keep coming back for more!
2. We love working with people who really want a great party for their guests!
3. If you wish, you may inspect our kitchen and talk with our chef!
4. We can arrange for you to speak with some of our very happy customers!
5. We won't rush you, unless you're in a hurry!
6. Prices are always fair...they get lower as your number of guests go up!

KURTS CATERERS Call 1-800-246-9948
OF
SMITHTOWN Free menus and estimates!
 Ask for Rich Youngren
 Banquet Manager



KURTS CATERERS OF SMITHTOWN is the official opening night caterer
 for the **GATEWAY PLAYHOUSE**

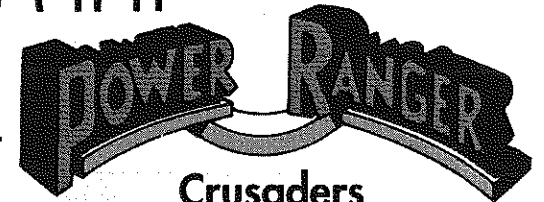
CHILDREN'S THEATRE

BATMAN

And The

Live Musical Shows!
FRIDAY and SATURDAY
MORNINGS AT 10:30 A.M.

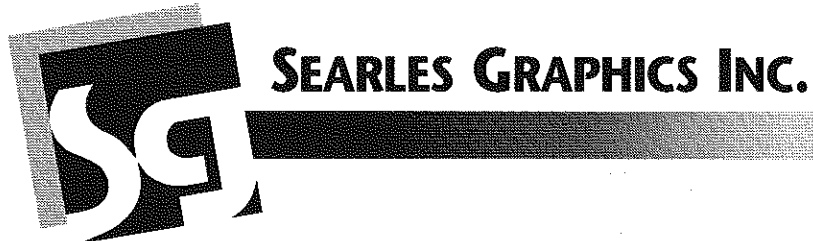
8/11-12, 8/18-19
 8/25-26, 9/1-2



Crusaders

Advance sale general admission tickets for all shows go on sale beginning May 3rd - \$6.00.
 Remaining tickets will be sold at the door the morning of the show - \$4.00 (cash only).
 Sorry, no mail or phone orders can be accepted.

Shows subject to change without notice. Children ages 2 and older only.



SEARLES GRAPHICS INC.

**Full Service Commercial Printing
 and Design Studio**

1457 Montauk Highway
 P.O. Box 2099

East Patchogue, NY 11772

Tel: (516) 286-2943 Fax: (516) 286-3281

DO YOU RECEIVE OUR FREE BROCHURE EACH YEAR?

If not, fill out the form and leave it in the box office.

(Please Print)

Name _____

Address _____

Zip _____