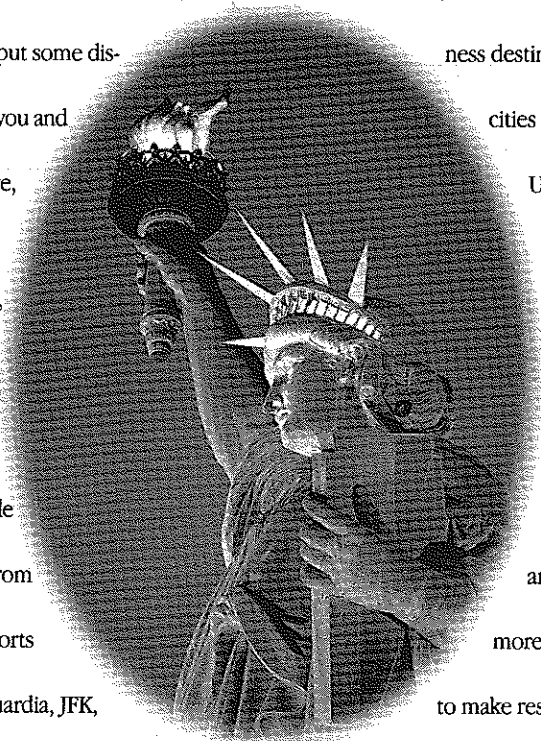


# Over 200 Ways To Leave An Old Flame.

AA

*American Has Over 200 Departures Every Business Day To Over 300 Cities From Six Tri-State Area Airports.*

Even the most passionate love affairs can benefit from a little time off. So, when it comes time to put some distance between you and the city you love, American and American Eagle® can help with more than 200 flights every single business day. From six tri-state airports including La Guardia, JFK, Newark, Long Island MacArthur, Newburgh Stewart and White Plains. It's never been more convenient to fly to more than 300 cities worldwide, with service to key business destinations, major cities throughout the U.S., Europe, the Caribbean and Latin America. So, now it's never been easier to leave an old flame. For more information or to make reservations, call your Travel Agent or an American Airlines representative today at 1-800-433-7300.



**American Airlines®**  
*Something special in the air.™*

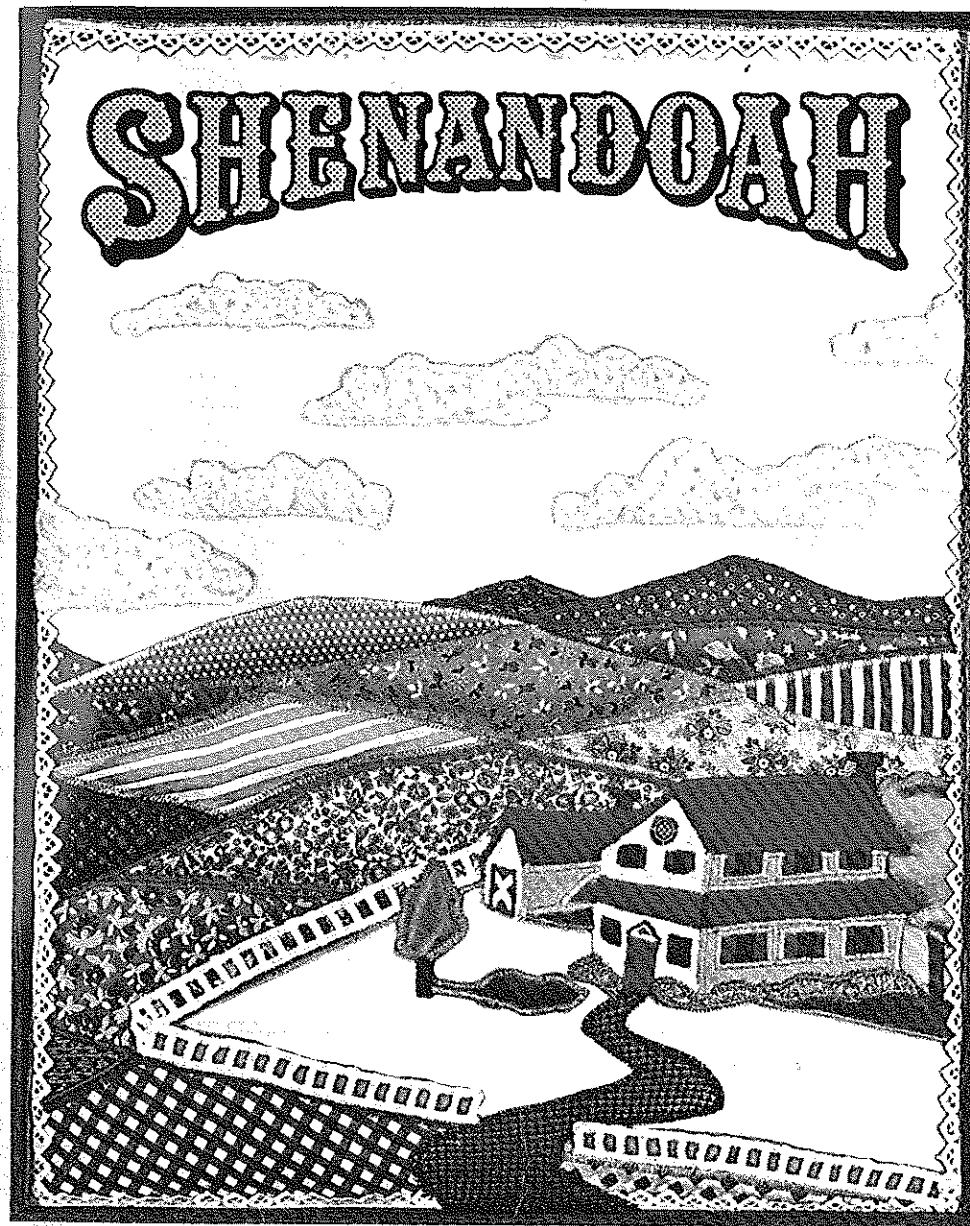
American Eagle is a registered trademark of American Airlines, Inc., and is American's regional airline associate.

# GATEWAY PLAYHOUSE

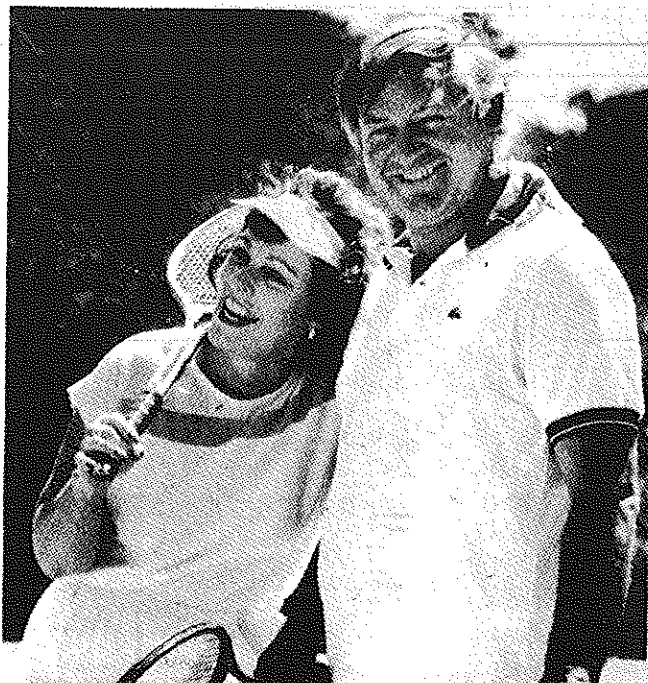
PLAYBILL

1995

## SHENANDOAH



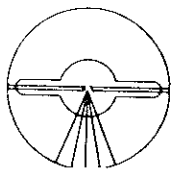
For peace of mind...  
Take the time



## MAMMOGRAPHY SAVES LIVES

Full Mammography accreditation by the American College of Radiology

**BROOKHAVEN RADIOLOGIC ASSOCIATES, P.C.**



HOSPITAL ROAD PROFESSIONAL CENTER

250 Patchogue-Yaphank Road  
East Patchogue, New York 11772

(516) 475-1030

WALTER P. QUIGLEY, M.D., D.A.B.R.

RONALD S. HAMES, M.D., D.A.B.R.

SETH O. MANKES, M.D., D.A.B.R.

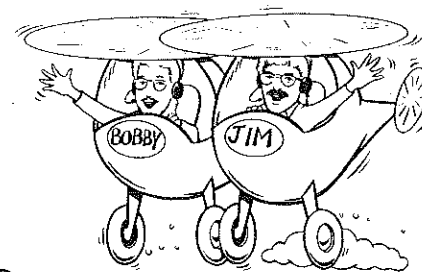
STEVEN EPSTEIN, M.D., D.A.B.R.

MARK J. LODESPOTO, M.D., D.A.B.R.

IRA J. LANGER, M.D., D.A.B.R.

MARILYN LERNER, M.D., D.A.B.R.

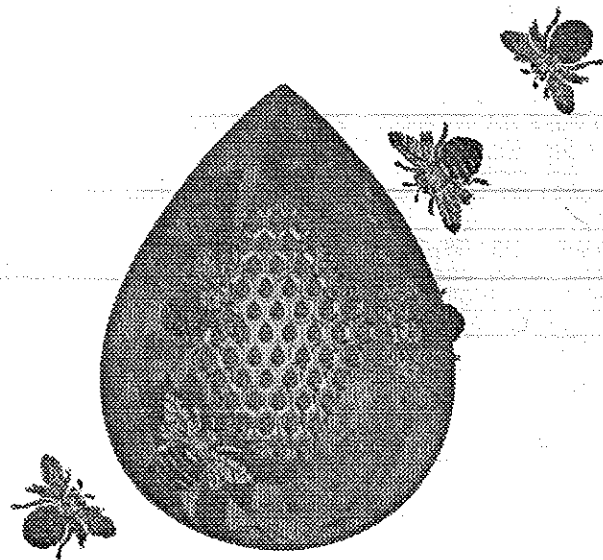
# THE WALK BREAKFAST CLUB




**DON'T WAKE UP WITHOUT US!**

# WALK <sup>FM</sup> 97.5

LONG ISLAND'S #1 MORNING SHOW!



Tremendous selection of fine jewelry,  
period jewelry and collectables. Savings on  
unredeemed  merchandise.  
Written/Verbal and Estate Appraisals by  
appointment.

*O'Neill's*

*"Servicing Manhattan To Montauk"  
Jewelers and Collateral Loanbrokers*

**One East Main St., Patchogue  
289-9899**

*Pean & Veronica Cantwell, Kathryn Cantwell*

ALLAN and ALLAN ARTS, LTD.  
in association with  
PAUL ALLAN and JOHN HODGE

*presents*

**PEAK KWINARIAN**

*in*

# **SHENANDOAH**

*Featuring*

**JENNIFER RAE BECK  
BRANDON STACY WILLIAMS**

**LAURIE McDERMOTT  
CHRISTOPHER LYNN**

*with*

**JEFF BOWEN  
ROY HAVRILACK  
JAMES ROGGENBECK**

**GEORGE R. ELEAZER III  
CRAIG OLDFATHER**

**JUSTIN FLAGG  
KEN WEISBACH**

Music by  
**GARY GELD**

Book by  
**JAMES LEE BARRETT  
Peter Udell and Philip Rose**

Lyrics by  
**PETER UDELL**

Based on the original screenplay by  
**JAMES LEE BARRETT**

Associate Producer  
**JEFF BELLANTE**

Sound Designer  
**MARK CLARK**

General Manager  
**GALE EDWARDS**

Set Designer  
**MICHAEL ANANIA**

Costume Designer  
**ERIN STEARNS AMICO**

Lighting Designer  
**KIM HANSON**

Production Stage Manager  
**MARIBETH HUNTER**

Production Consultant  
**PHILIP ROSE**

Musical Direction  
**PHYLLIS GESSLER**

Choreography by  
**MINDY COOPER**

Directed by  
**DOM RUGGIERO**

SHENANDOAH set originally designed for the Paper Mill Playhouse

SHENANDOAH is presented through special arrangement with  
Samuel French, Inc., 45 West 25th Street, New York, NY 10010

# Bellport Country Club

Presents L.I.'s Favorite Pre/Post Theatre Dining at:

## Fairway's Cafe

Upstairs at the Bellport Country Club (Elevator Available)

Serving Lunch and Dinner Tues-Sun, 11:30 to Closing

Specializing in Succulent Steaks and Chops

**Tuesday**  
"That's Italian"  
Buffet Night  
**\$12.95**  
All You Can Eat  
Served 4pm till Closing

**Wednesday**  
Prime Rib Night  
Complete Dinner  
**\$14.95**  
Served 4pm till Closing

**Complete**  
Sunset Dinner  
**\$12.95**  
From  
Wed.-Sat: 4pm till 6pm  
Sun. 4pm till Closing

**Spectacular**  
Sunday Brunch  
BUFFET  
**\$12.95** Served  
11:30am - 3pm  
Sunset Dinners Served  
4pm till Closing



—Veranda Dining • Gift Certificates Available  
South Country Road • Bellport Village • (516) 286-4227

Bayport  
House  
Ristorante

472-2444



291 Bayport Avenue  
Bayport, New York

*The Ultimate In Fine Dining*

Specializing in Northern Italian/  
Continental Cuisine

Open 7 Days • 5 pm

(516) 475-1790-1791  
Fax (516) 475-1807

Emergency Boarding  
Service  
Call 289-1524

**PATCHOGUE  
PLATE GLASS** CO.  
INC.

GLASS—MIRRORS—PLEXIGLASS—STORE FRONTS  
AUTO GLASS—INSURANCE CLAIMS

RON HENTHORNE  
Manager

7 Railroad Ave.  
Patchogue, NY 11772

MAYER'S  
*Flower* cottage

"We express your feelings — *beautifully*"

Flowers delivered anywhere

Weddings and parties our specialty

399 Medford Avenue, Patchogue, NY 11772 (516) 475-1779

**Radisson.**  
HOTEL ISLANDIA

## Dinner Theatre Package

Enjoy a luxurious evening with a delicious five-course dinner  
to enhance your theatre experience.

Package includes:

- ★ Two theatre tickets
- ★ Deluxe overnight guest accommodations
- ★ Five-course dinner for two
- ★ Indoor pool, whirlpool, and exercise facilities
- ★ Complimentary Showtime
- ★ Baby-sitting services available
- ★ Limousine service available by Tran-Star Executive Transportation



Package Price

**\$89.00 Per Person**

based on double occupancy  
Package price does not include  
tax. Package available 7 days a  
week. Advance reservations  
required.

Please call 516/232-3000  
or 1-800-333-3333

and request  
Dinner Theatre Package.

# ACTING AND MUSICAL THEATRE TRAINING

storytelling & theatre games classes for 5-8 year-olds

all levels of acting for all ages thru adult

television auditioning and musical comedy classes



**GATEWAY ACTING SCHOOL**

now enrolling! **286-9014**

LEARN FROM THE PROFESSIONALS!

# Bellport CHOWDER HOUSE



*An Eating and Drinking Tradition*

**FULL MENU**

**FULL BAR**

Open Daily For Lunch and Dinner  
Seven Days A Week

**CHAMPAGNE BRUNCH SUNDAY NOON TILL 3 P.M.**

Sunday - Thursday till 11:00 p.m. Friday & Saturday till Midnight

**SPECIALIZING IN FRESH LOCAL SEAFOOD  
AT AFFORDABLE PRICES**

*Before and After the Show You'll Want to Meet and Eat At  
THE CHOWDER HOUSE*

**TAKEOUT**

**CATERING**

19 Bellport Lane • Bellport Village • 286-2343

## CAST OF CHARACTERS

*(In Order of Appearance)*

Charlie Anderson	.....	PEAK KWINARIAN*
Jacob	.....	CRAIG OLDFATHER*
James	.....	CHRISTOPHER LYNN
Nathan	.....	KEN WEISBACH
John	.....	JEFF BOWEN
Jenny	.....	JENNIFER RAE BECK*
Henry	.....	ROY HAVRILACK
Robert (the Boy)	.....	JUSTIN FLAGG
Anne	.....	LAURIE McDERMOTT*
Gabriel	.....	GEORGE R. ELEAZER III
Reverend Byrd	.....	DOUG PETERSON
Sam	.....	BRANDON STACY WILLIAMS*
Sergeant Johnson	.....	JACK BRUCE
Lieutenant	.....	D. CHRISTOPHER WILLIAMS
Tinkham	.....	GENE LUBAS
Carol	.....	DOUG PETERSON
Corporal	.....	JAMES ROGGENBECK
Marauder	.....	JACK BRUCE
Engineer	.....	GENE LUBAS
Confederate Sniper	.....	JOHN PATRICK NORD

### THE ENSEMBLE

JACK BRUCE, RUSSELL HLADKY, GENE LUBAS, ALISON MOULD,  
JOHN PATRICK NORD, DOUG PETERSON, EDDIE PETERSON,  
JAMES ROGGENBECK, MARK ROWE, GREGORY TEREBSKI,  
D. CHRISTOPHER WILLIAMS

### UNDERSTUDIES

For Charlie Anderson, Tinkham: DOUG PETERSON  
For Robert: GREGORY TEREBSKI  
For Anne, Jenny: ALISON MOULD  
For Sam: JAMES ROGGENBECK  
For Corporal: D. CHRISTOPHER WILLIAMS  
For Engineer, Marauder, Lieutenant: JOHN PATRICK NORD  
For Jacob, James: MARK ROWE  
For Nathan, Henry: JACK BRUCE  
For Carol, John, Sgt. Johnson: GENE LUBAS  
Male Swings: EDDIE PETERSON, RUSSELL HLADKY

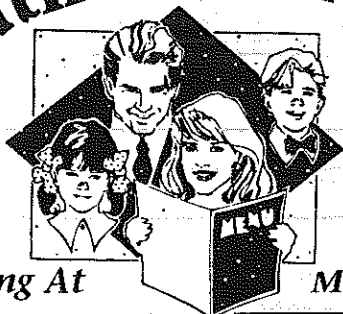


\*Actors employed in this production are members of Actors' Equity Association,  
the union of Professional Actors and Stage Managers in the United States.



Directors employed in this production are members of  
society of stage directors and choreographers, inc.

# South Country Inn



*Fine Dining At*

**Extensive Menu**

*Continental Cuisine  
Early Bird Specials*

*Moderate Prices*

**Special Attention**

*Given to Theater Goers... We'll  
get you to the show on time!*

**Theater Groups**

*Welcome for Lunch and Dinner*

668 South Country Road, East Patchogue

Open 6 days **758-1919** Closed Monday

Open  
12 Noon  
to 11 PM  
Daily

THE GREAT SOUTHBAY  
INN



*See The Show  
And Stay The Night*



*Also Serving Breakfast*

160 South Country Road  
Bellport, NY 11713  
(516) 286-8588

*Gude*  
photography  
8 W. Main St.  
Patchogue NY  
654-8093

Portraits  
Restorations

*Playhouse Plumbing Done By  
Beach Plumbing &  
Heating, Inc.*

Phone 281-4396 • John Vilano  
Alterations Repairs New Work

**Volunteers Wanted**

Gateway Playhouse is seeking  
volunteer ushers to join its  
Volunteer Corps

Call 286-0555 for more  
information

## SYNOPSIS of SCENES and MUSICAL NUMBERS

The Shenandoah Valley, Virginia

The Civil War

PROLOGUE

"Raise the Flag of Dixie" ..... Confederate and Union Soldiers

ACT I  
Spring

Scene 1: Inside the Anderson House. Sunday morning.  
"I've Heard It All Before" ..... Charlie Anderson  
Scene 2: A Country Road.  
Scene 3: Inside the Church.  
"Pass the Cross to Me" ..... The Congregation  
\*Scene 4: A Country Road. Moments later.  
"Why Am I Me?" ..... Boy and Gabriel  
Scene 5: The Anderson Farmyard.  
"Next to Lovin' (I Like Fightin')" ..... The Anderson Sons: Jacob, James, Nathan, John, Henry  
\*Scene 6: The Anderson Porch.  
"Over the Hill" ..... Jenny Anderson  
"The Pickers are Comin'" ..... Charlie Anderson  
"Next to Lovin'" (Reprise) ..... Jacob, James, Nathan, John, Henry, Jenny, The Boy  
Scene 7: Martha's Grave.  
"Meditation I" ..... Charlie Anderson  
Scene 8: Inside the Anderson Parlor. Evening.  
Scene 9: Anne's bedroom. Minutes before the Wedding.  
"We Make a Beautiful Pair" ..... Anne and Jenny  
Scene 10: The Anderson Farmyard. Sam and Jenny's wedding.  
"Violets and Silverbells" ..... Jenny, Sam, and Company  
Scene 11: The Anderson Porch. Minutes later.  
"It's a Boy" ..... Charlie Anderson and Sons  
Scene 12: Anne's Bedroom.

\*Fight choreography assisted by Craig Oldfather

ACT II  
Autumn

Scene 1: The Anderson Farmyard. Weeks later.  
"Freedom" ..... Anne and Gabriel  
"Violets and Silverbells" (Reprise) ..... James and Anne  
Scene 2: A wooded area near a railroad track. Night.  
"Papa's Gonna Make It Alright" ..... Charlie Anderson  
"The Only Home I Know" ..... The Corporal and Soldiers  
Scene 3: A Clearing in the Woods. Later that evening.  
"The Only Home I Know" (Reprise) ..... The Corporal  
Scene 4: Inside the Anderson house. Several days later.  
"Papa's Gonna Make It Alright" (Reprise) ..... Jenny  
Scene 5: Martha's Grave.  
"Meditation II" ..... Charlie Anderson  
Scene 6: Inside the Church.  
"Pass the Cross to Me" ..... The Congregation  
"Freedom" (Reprise) ..... The Company

**ACT III**  
TAKES PLACE AT



*Patchogue Floral's Fantasyland*

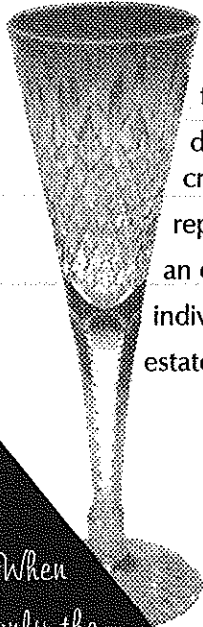


COME  
BROWSE

LARGEST EMPORIUM CATERING TO  
THE ESTHETIC PROCUROR OF UNUSUAL HOME DECOR —

Giftware - Art Crafts - Custom Permanent Arrangements

10 Robinson Avenue • East Patchogue • 475-2059



Long Island's quality, full-service jeweler for over 135 years...  
fine jewelry and gems for all occasions...  
diamonds and pearls, gold and silver, watches and clocks,  
crystal, giftware and fine writing instruments...  
repairs are completed on the premises...  
an expert gemologist is always available...  
individual appraisals while you watch...  
estate jewelry purchased (collections or individual pieces).

Since 1860

*F. Stadtmuller*

JEWELERS

18 MAIN STREET • DOWNTOWN SAYVILLE  
(516) 589-3300

MAJOR CREDIT CARDS WELCOMED

When  
only the  
best will do...

516-726-8000

**Ann L. Nowak  
&  
Associates**  
ATTORNEYS AT LAW



Credit Repair & Debt Relief  
Uncontested Divorces  
Wills and Estates  
Bankruptcy

*General Counsel to the  
Gateway Playhouse*

Deerfield Green, P.O. Box 1290  
Water Mill, NY 11976-1290

## ALL COUNTY Home Security Systems

Residential • Commercial



### WIRELESS

- Burglar Alarms
- Heat Detectors
- Fire
- Central Station
- Freeze Alert
- Medical Alert

**FREE  
ESTIMATES**

*Authorized Distributor For  
Dynamark • AllGuard  
Safety Security Products*

(516) 286-8330

All County Home Security Systems  
680 South Country Road  
East Patchogue, New York 11772

# SHENANDOAH

## SYNOPSIS

Let it be known that Charlie Anderson was an upright man before God. He knew the smell of cool rain on parched earth. He knew the smell of growing things...of tomato vines and clover...of peach blossoms on an early morning breeze. He understood and gloried in the wonder and joy of life in a newborn foal on wobbly legs. And Charlie Anderson knew that it was good...because he was a farmer.

He had six strong sons and a fair daughter...and a daughter-in-law with child whom he loved as one of his own...because she was a good woman. He was proud of them all and his heart was full.

Charlie was a widower, his beloved and loving wife Martha having died on the night of the birth of their youngest son...yet Charlie lived with Martha every day...because he loved her still. Her departure from his arms had not dimmed her presence in his soul.

And with the help of his six strong sons, Charlie farmed 500 acres of good black earth in God's beauty that was Shenandoah Valley. Charlie was good to the land and the land was good to him...and because Charlie and the land were one...God looked down and blessed him and his with bountiful harvests.

He lived his life and did his work without the sweat of one slave...and this was good and right and just...and God blessed him for this also.

And then a bloody and horrendous civil war broke upon the land...and because war is evil, Charlie would not recognize it as his own.

The Union divided against itself and the land was consumed in flame and smoke and bitterness...and a nation forgot that North and South...the sons were all their own...Brothers were fighting brothers and the tears of their women and children, great though they were, still were insufficient to wash away the blood and this hurt.

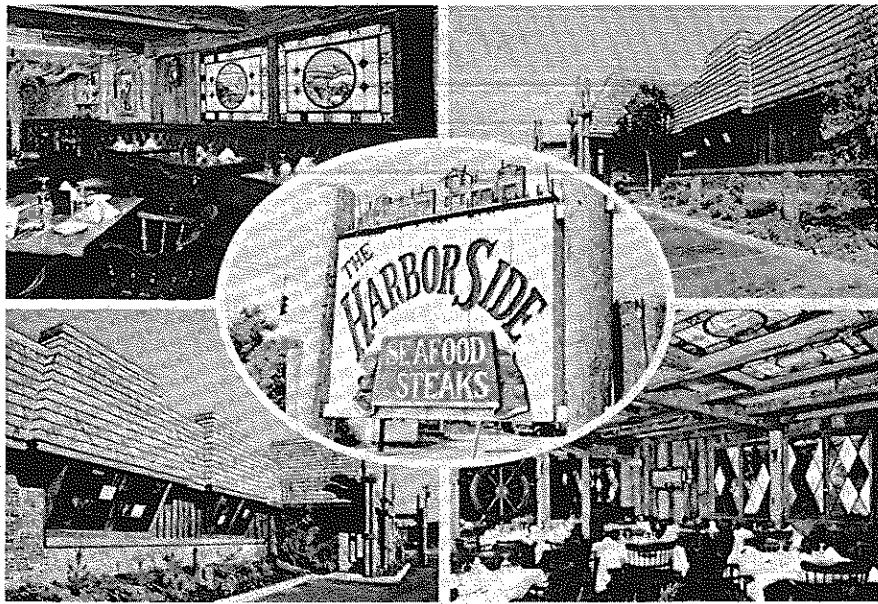
Charlie and his family...as much as they continued to protest this war that was not of their making...and not of their doing...and not to their liking were finally drawn by the forces of evil from their home and their farm...and into the ungodly holocaust.

And in their wanderings through the brutal, dehumanizing labyrinth of war, Charlie and his family met the devil. And Charlie Anderson turned his back upon the devil.

Let it be known that God blessed him again.

-JAMES LEE BARRETT

# Harbor Side Restaurant



*"Incomparable Seafood Restaurant"*

Complete Lunches from \$7.95 to \$10.95

Early Bird Menu

Mon.-Fri. 3:30 PM-5:45 PM

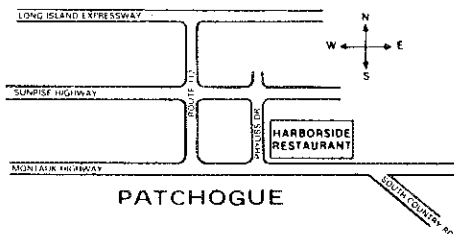
Sat. 3:30 PM-5:30 PM

Starting at \$8.50

Appetizers from \$3.95 to \$5.95

Dinners from \$13.95 to \$22.95

Located On the Corner of  
East Main St. (Rt 27A)  
and Phyliss Drive



Let us plan  
your next party  
from 25 to 125

Open 7 days a week  
at 11:30 am

Highly Recommended: ★★★  
Newsday, Daily News  
NY Post & The Practical Gourmet

503 E. Main Street  
Patchogue, New York  
(516) 654-9290

## WHO'S WHO (in alphabetical order)

**JENNIFER RAE BECK** (*Jenny Anderson*) is happy to return to the Gateway Stage, having made her professional debut here at the age of 12 in ANNIE. Recently, she toured the country playing Eponine in LES MISERABLES, a role she also had the honor of playing in the show's Asian premiere in Singapore. Prior to that, she played Peron's Mistress in the National Tour of EVITA, and appeared in the Tony Award winning revival of FIDDLER ON THE ROOF, which starred Topol. Television audiences will remember her as June opposite Bette Midler's Rose in the CBS remake of GYPSY. She wishes to thank her family for their continued support. Much love to Douglas.

**JEFF BOWEN** (*John Anderson*) recently completed a run of THE BEST LITTLE WHOREHOUSE... in his native state of Florida. He has appeared regionally in GOOD NEWS, MAME, EVITA, ANYTHING GOES, ON THE TWENTIETH CENTURY, THE DIVINERS, and many other productions. Jeff is making his Gateway debut and is thrilled to be working among such an amazing group of artists. He dedicates his performance to his family and friends, and especially K.P. and Joe.

**JACK BRUCE** (*Sergeant Johnson/Marauder/Ensemble*). Regional credits include leading and supporting roles in THE ANDERSONVILLE TRIAL, EVITA, ME AND MY GIRL, JOSEPH AND THE AMAZING TECHNICOLOR DREAMCOAT, the Yeston/Kopit PHANTOM, WEST SIDE STORY, etc. Originally from Atlanta, Jack resides in NYC, where he has performed his one-man show, LIFE WITHOUT SUGAR.

**GEORGE R. ELEAZER III** (*Gabriel*) is very happy to be making his mainstage debut at Gateway. He has appeared in several beauty pageants, where he became all finalist and was awarded the First Runner-up for Most Photogenic in New York State. George has studied Acting in Gateway's Acting School, and tap, jazz, and ballet for the past 5 years with Stage Door School of Dance. He was awarded the Savion Glover Award during the Star Power National Dance Competition, and received a perfect score in the NYSSMA Solo Festival. George has performed in the Gateway Children's Theatre in THE PURPLE DINOSAUR AND FRIENDS and PINOCCHIO. George would like to thank God for his many blessings, his Mom and Dad for all their love and support, and his sister Tasha for getting him started.

**JUSTIN FLAGG** (*Robert Anderson*) is pleased to return to Gateway in his fifth musical as a motherless boy. In previous seasons, he appeared as Colin in THE SECRET GARDEN, Young Erik in PHANTOM, a Newsboy in GYPSY, and a Lost Boy in PETER PAN. Last summer, Justin had his first "live" stage mother when he played Will Rogers, Jr. in THE WILL ROGERS FOLLIES. Justin will be a seventh grader in Bellport, NY. He studies at Stage Door School of Dance and Gateway Acting School.

**ROY HAVRILACK** (*Henry Anderson*) recently graduated from a two-year program in the Meisner Methodology for Actors in NYC as taught by Silkie Oishi. Roy also studies voice and dance with Jay Kerr and Jerri Garner respectively, and holds a B.A. in theatre from Oneonta State University. Many thanks to my teachers and friends for their love and support.

**RUSSELL HLADKY** (*Ensemble/Male Swing*) comes directly from Gateway's own Children's Theatre, where he has portrayed everything from an Owl to a Stage Manager. Training includes NYSSSA (New York State Summer School of the Arts) with Circle Repertory Company and the Gateway Acting School. Favorite credits include Aaron Copeland's THE TENDER LAND, FIDDLER ON THE ROOF, RAGS, THE RIMERS OF ELDRICH, and THE WIZARD OF OZ. Russell dedicates his performance to his friends and family, and thanks them for their support.

**PEAK KWINARIAN** (*Charlie Anderson*) joins us at Gateway for one of his favorite and most challenging roles. "The role of Charlie Anderson is so personally satisfying because it asks for such a strong investment on both the vocal and emotional levels." He compares it to the role of Don Quixote in MAN OF LA MANCHA, which he also considers one of his most fulfilling. Peak has toured with John Raitt and Jerome Hines, and most recently performed as Emile DeBecque with Jamie Farr in SOUTH PACIFIC. Among his other credits are the King (THE KING AND I), Arthur (CAMELOT), Sky Masterson (GUYS & DOLLS), Harold Hill (THE MUSIC MAN), Murry (A THOUSAND CLOWNS), and daytime TV appearances on "The Edge of Night" and "Texas."

**GENE LUBAS** (*Tinkham/Engineer/Ensemble/Dance Captain*) comes to SHENANDOAH directly from the National Tour of THE WILL ROGERS FOLLIES. He also toured the country with the 50th Anniversary Celebration of OKLAHOMA, in which he played Cord Elam and understudied Curly. At the Music Theater of Wichita, Gene appeared as Caleb in SEVEN BRIDES FOR SEVEN BROTHERS and as the Minister of Culture in PHANTOM. Recent credits include: the European company of 42nd STREET, THE MUSIC OF ANDREW LLOYD WEBBER for Holland America Cruise Lines, and the INAUGURAL GALA '93 at the Kennedy Center in Washington, D.C. Mr. Lubas obtained his education from Duquesne University and Point Park College in his hometown of Pittsburgh, Pennsylvania, and studied extensively with the National Ballet of Czechoslovakia.

**CHRISTOPHER LYNN** (*James Anderson*) toured Europe as Cliff in CABARET performed in German. His English-speaking performances include BRIGADOON at Paper Mill Playhouse; FIELDS OF AMBROSIA at George Street Playhouse; the Duke University Broadway Preview production of MERRY WIVES OF WINDSOR, TEXAS; and productions of SOUTH



Gateway Playhouse announces the opening of its new  
Ticket Booth at the Smith Haven Mall

Tickets for all performances • Gift Certificates

Located directly across from Cineplex Odeon Cinemas  
Open Monday thru Saturday 10:00 AM to 9:00 PM • Sunday 11:00 AM to 6:00 PM



# Porto Bello

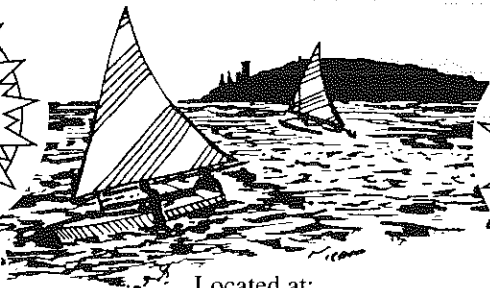
## RISTORANTE

FINE ITALIAN CUISINE

PIZZA  
PASTA  
PASTRY

Seafood  
Cappuccino  
Cocktails

Capture  
the  
Moment



Located at:  
14 STATION RD. • BELLPORT, LI  
for reservations or take out, call:  
286-3300 • 286-3344

HOURS:  
Mon-Thurs 11am-11pm  
Fri, Sat 11am-1am  
Sun 11am-11pm

The  **Nautilus** FITNESS CENTER Of Bellport

WE OFFER: • Heart Rate Monitoring • Blood Pressure Testing • Body Fat Com-  
position Testing • Personalized Program Sheets • Prescheduled  
Private Workouts • Individual Attention From Certified Instructors  
• Before And After Photography

Free  
TRIAL  
WORKOUT

120 S. Country Road, Bellport Village 286-4899

shop in  
BELLPORT VILLAGE

FAX 516-286-6080 516-286-0510  
SENTRY HARDWARE  
**BELLPORT HARDWARE**  
PITTSBURGH PAINTS  
9 BELLPORT LANE  
ARTHUR NADEAU BELLPORT, NY 11713

Tel: 286-0395  
**LYONS**  
**FUEL OIL CO., INC.**  
23 Station Road, Bellport, N.Y.

**WALLEN'S**  
**IGA MARKET**

Main Street • Bellport, N.Y.

QUALITY FOOD IN A FRIENDLY  
NEIGHBORHOOD MARKET

FULL LINE OF:  
Choice Meats & Poultry, Groceries  
Produce & Dairy

HOURS:  
8-7 p.m. - Mon. - Thurs. 8-6 p.m. - Saturday  
8-8 p.m. - Friday 8-1 p.m. - Sunday



**BELLPORT PAINT & WALLPAPER, INC.**

COMPLETE PAINT & WALLPAPER SUNDRIES  
CAROT STAINS • OLYMPIC PAINT & STAINS

145 South Country Rd.  
Bellport, NY 11713  
516-286-5850

**THE  
BANK OF  
NEW  
YORK**

LONG ISLAND REGION

**BELLPORT BANKING  
OFFICE LOCATED AT:**

32 Station Road  
Bellport, New York 11713

Virginia Asero  
Assistant Vice President

(516) 286-4200

Member FDIC 1986 The Bank of New York

**NEW  
VISIONS**  
UNISEX HAIR DESIGNERS  
full service hair and  
nail salon



Create the Look  
that Adds  
Dimension and Style  
to Your Active Life

MANICURES, PEDICURES, WAXING

155 S. Country Road, Bellport, N.Y. 11772  
(516) 286-0216

## Bellport Delicatessen

Catering is our Specialty

124 Main Street, Bellport  
(516) 286-0444 • FAX 286-6666

Open 5:30 a.m. - 10:00 p.m. 7 Days a Week

Open for Breakfast and Lunch Specials

Homemade Muffins • Gourmet Coffees

# WBLI

## 106.1

The best on Long Island is  
also the most **POWERFUL**  
station on Long Island...

now broadcasting  
at **49,000 watts!!**

3090 Route 112  
Medford • Long Island  
732-1061

# STAGE DOOR Dance SCHOOL OF

BALLET • POINT • TAP • JAZZ • TAP & BALLET COMBO • AEROBIC EXERCISE • STEP CLASSES

Now appearing in this production  
of Shenandoah  
Long-time students  
Justin Flagg  
George R. Eleazer III  
CONGRATULATIONS!

PLAZA 101  
(ACROSS FROM CALDOR)  
25 PATCHOGUE-YAPHANK RD.  
EAST PATCHOGUE

Pre-School Thru Adults  
Family Discounts

Artistic Director  
Diane Giattino

Celebrating Our 20th Anniversary

**654-8858**

**Borderline CAFE & COMEDY CLUB**  
Fine Dining & Sprints

*Setting the Trend for Restaurants of the 90s*

May we suggest our gourmet specialty pastas, fresh local seafood, steaks & homemade desserts

"Just Close Enough To Be Your Favorite Restaurant"

**SUNDAYS  
WHOLE LOBSTER  
Special**  
**\$6.95**  
(At The Bar Only)

**\$5.00 OFF LUNCH**  
MIN. 2 LUNCH ENTREES PURCHASED  
Taxes & Gratuities Not Included  
With Coupon, not to be combined with any other offers. One coupon per visit. Expires 12/31/95

**\$10.00 OFF DINNER**  
MIN. 2 DINNER ENTREES PURCHASED  
Taxes & Gratuities Not Included  
With Coupon, not to be combined with any other offers. One coupon per visit. Expires 12/31/95

**Friday FREE Friday  
COMEDY PASS**  
With Purchase of Paid Admission  
**\$12.50 VALUE**  
Starts at 10:00 am  
With Coupon, not to be combined with any other offers.  
One coupon per visit.  
Valid Friday & Saturday only. Expires 12/31/95

**Saturday FREE Saturday  
COMEDY PASS**  
With Purchase of Paid Admission  
**\$12.50 VALUE**  
Starts at 10:00 am  
With Coupon, not to be combined with any other offers.  
One coupon per visit.  
Valid Friday & Saturday only. Expires 12/31/95

**HAPPY HOUR  
CATERING WITH A FLAIR  
LIVE MUSIC  
COMEDY • SAT. & SUN.**

**Borderline CAFE & Comedy Club**

2647 MONTAUK HWY.  
BROOKHAVEN  
286-8077



"We're Patient People"

**AMATO FAMILY CHIROPRACTIC**  
16-2 STATION ROAD  
BELLPORT, NY 11713  
516-286-2300  
Infant, Child & Adult Care  
**Dr. Frank J. Amato**

## WHO'S WHO (continued)

PACIFIC (Lt. Gable), ANYTHING GOES (Billy Crocker) and THE FOREIGNER (Ellard). Off-Broadway, Christopher appeared in THE NEWS IN REVUE, CINDERELLA (the Prince), and TWELFTH NIGHT (Sebastian) at Riverside Shakespeare Co. Thanks and love to his beautiful sister Susy and her family, and to my parents who inspire me.

**LAURIE McDERMOTT** (*Anne*) just finished playing Agnes in A BRIGHT ROOM CALLED DAY in New York. Originally from the West Coast, Laurie had the pleasure of joining the American Conservatory Theater (ACT) in its productions of GOOD, with William Hurt, CHARLEY'S AUNT, with Kathryn Crosby, HAMLET, and A CHRISTMAS CAROL. Further down the Coast, she played Maggie in LEND ME A TENOR, starred in PROMISED LAND, and had a stint on "The Young and the Restless." Laurie would like to thank her parents and her incredible husband Rick.

**ALISON MOULD** (*Ensemble/Anne, Jenny understudy*) is a 1995 graduate of Carnegie-Mellon University. Her favorite roles at CMU included Sally Bowles in CABARET; Maryann in ESCAPE FROM HAPPINESS; Petra in A LITTLE NIGHT MUSIC; and Charlotta in THE CHERRY ORCHARD. Last summer, Alison appeared at Maine State Music Theatre as Martha Jefferson in 1776.

**JOHN PATRICK NORD** (*Confederate Sniper/Ensemble/Male Swing*) is appearing in his first mainstage Gateway production and is definitely happy to be here. You may have seen him dancing on the spotlight platform during any of last season's shows. J.P. received his B.F.A. from St. Mary's College of Minnesota, where his credits include BETRAYAL, WAITING FOR GODOT, LITTLE SHOP OF HORRORS, and ONCE UPON A MATTRESS. J.P. would like to dedicate this performance to his parents, for all of their support, and to Rob, without whom this may never have happened.

**CRAIG OLDFATHER** (*Jacob Anderson/Fight Captain*) also performed the role of Jacob in Paper Mill Playhouse's SHENANDOAH. Most recently, in North Shore Music Theatre's PHANTOM, he played two characters, both of whom were killed by the Phantom. Oh, well. Craig portrayed the heroic student leader Enjolras in the 2nd National Company of LES MISERABLES, and has numerous NY and regional credits as well as film and TV roles, including "Midnight Caller" with Roger Daltry of The Who.

**DOUG PETERSON** (*Rev. Byrd/Carol/Ensemble*) has appeared in numerous professional and amateur theatre productions. His roles include John Proctor in THE CRUCIBLE, Captain Von

Trapp in THE SOUND OF MUSIC, and Ernst Ludwig in CABARET. Doug appeared on the short-lived CBS game show "Trump Card" and won the Question-and-Answer Show. If you look closely at the 1992 hit film HONEYMOON IN VEGAS, you may see Doug's face pop into view from behind James Caan and Sarah Jessica Parker.

**EDDIE PETERSON** (*Sniper/Ensemble*) returns to Gateway for his second production, his first being CITY OF ANGELS. His most recent stage accomplishments were CHICAGO, THE GLASS MENAGERIE, and HENRY VI, PART ONE of the American Theater of Actors in NYC. Eddie would like to thank his family and friends for their unending love and support.

**JAMES ROGGENBECK** (*Corporal/Ensemble*) most recently appeared in the New York revival of Jerome Kern's SITTING PRETTY. Before that, he toured the United States, Canada, and the Far East as Freddy in MY FAIR LADY. James has also played Motel in the national tour of FIDDLER ON THE ROOF. He is a graduate of the University of Michigan, where he received a B.F.A. in Musical Theater. Gateway audiences may remember him as Erik, the front desk clerk in GRAND HOTEL.

**MARK ROWE** (*Scavenger/Ensemble*) most recent stage credits include Stine in CITY OF ANGELS, Ben in PAINT YOUR WAGON, and Owen in THE FOREIGNER, all with the Bigfork Summer Playhouse in Montana. Last year, Mark performed as an entertainer with Premier Cruise Lines, and has also worked at the Disney/MGM Studios in Orlando. Other regional credits include Jesus in GODSPELL, Don in BUTTERFLIES ARE FREE, Wykowski in BILOXI BLUES, and Delmont in THE MISS FIRECRACKER CONTEST. Mark holds a B.F.A. in Theatre from the University of Tennessee.

**GREG TEREGETSKI** (*Ensemble/Robert understudy*) is from Long Island and is an honor student at Smithtown Middle School. Greg has played the Scarecrow in THE WIZARD OF OZ, Dromio of Ephesus in Shakespeare's A COMEDY OF ERRORS, and various parts in the Drama Club's ROCK ON REVUE. Greg enjoys playing the trumpet in the School Band and plays soccer, basketball, and baseball for his school and travel teams.

**KEN WEISBACH** (*Nathan Anderson*) trained at Rutgers' B.F.A. program and an AMDA Graduate. Ken is happy to be here for the first time. Ken was last seen on tour with IT'S A WONDERFUL LIFE as well as THE BUDDY HOLLY STORY in Reno, Nevada. Other credits include the title role in PIPPIN, Joe Hardy in DAMN YANKEES, Judas in GODSPELL, Berger in HAIR, and Bernardo in WEST SIDE STORY, during which he met his fiancée, Karen. Much love to her and to family and friends.

**BRANDON STACY WILLIAMS** (*Sam*) is originally from Arkansas, and now resides in NYC. Most recently he appeared in the National Tour of BLOOD BROTHERS. Brandon has a B.F.A. in Acting from Carnegie Mellon University, where his favorite roles were Rocco in SATURDAY SUNDAY MONDAY and Stephan in LINE. He is happy to be making his Gateway debut.

**D. CHRISTOPHER WILLIAMS** (*Lieutenant/Scavenger/Ensemble*) is a native New Yorker who is thrilled to be performing in SHENANDOAH, but will unfortunately have to leave the show if the Yankees are in the World Series. Favorite roles include the Boy in THE FANTASTICKS, Joseph in JOSEPH...DREAMCOAT, and the bartender in TRIPLETS. He'd like to say "Hi" to all his terrific family and friends. Doug dedicates this and every performance to his incredible Mom.

**PAUL ALLAN and JOHN HODGE** (*Producers*) Messrs. Allan and Hodge have been theatrical partners since 1982. Between the two of them they have over 25 years of experience ranging from Broadway and Off-Broadway to Regional Theater and the last 14 years of Gateway's productions. They worked on the New York City productions of: GROUCHO, DIAMONDS, JUST SO, and PACIFIC OVERTURES. They have produced the National and International tours of ANYTHING GOES, SONG AND DANCE, CAMELOT, A CHORUS LINE, SOUTH PACIFIC, 42nd STREET, MAN OF LA MANCHA and OLIVER. They had the distinguished honor of bringing the first American produced musical to Singapore with their touring production of SOUND OF MUSIC in 1990. For the last three years they have been operating Gateway's Candlewood Playhouse in New Fairfield, Connecticut. Upcoming projects include the National Tours of SHENANDOAH, SWEET CHARITY and an International Tour of WIZARD OF OZ.

**DOM RUGGIERO** (*Director*) has directed productions across the U.S. as well as internationally, from Great Britain to South America to Australia. Recent credits include the NYC premiere of Stephen Sondheim's THE FROGS, LA TRAVIATA for NYC Opera, and the highly acclaimed Yeston/Kopit version of PHANTOM. Dom directed the Australian National Tour of AIN'T MISBEHAVIN' and the recent U.S. Tour of Andrew Lloyd Weber's SONG AND DANCE. He will be directing the upcoming fall U.S. tour of SHENANDOAH. For the Orient, Dom directed the U.S. Company of ANYTHING GOES, produced at Gateway, where he has been Resident Director for the past six years, directing such productions as RUMORS, LEND ME A TENOR, INTO THE WOODS, ONCE ON THIS ISLAND, THE SECRET GARDEN, and various other musicals. Dom is the proud recipient of the Connecticut Critics Circle Award as Best Director of 1994 for his production of PHANTOM. Other directorial awards are Best Director for INTO THE WOODS, BIG RIVER, *Sarasota Herald Tribune*, and LITTLE SHOP, *Tampa Tribune*. Dom was involved with the Broadway bound production of SHLEMIEL THE FIRST, and will be Production Stage Manager for AN EVENING WITH BRUCE ADLER AND MAL Z. LAWRENCE ON BROADWAY this coming April.

**ROBIN JOY ALLAN** (*Casting Director*) spent her childhood years performing at Gateway, and after directing, teaching and some producing, began casting in Manhattan in 1985. She worked with several Off-Broadway companies and then spent five years in Los Angeles. She

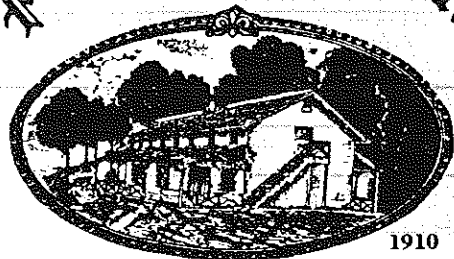


Always Gives You  
100%

# Wine Grove Inn

On The Swan River

Open Weekdays  
11:30 A.M.  
Saturday  
11:30 A.M.  
Sunday  
12:00 P.M.



Daily  
Blackboard  
Specials!

Dinner Served 4 PM to 10 PM  
Weekdays & Saturdays • Sundays 12 PM to 9 PM

## EARLY BIRD SPECIALS

Monday thru Friday 4 PM to 6 PM  
Sundays 12 PM to 5 PM

## LUNCH

Monday thru Saturday  
11:30 AM to 3:00 PM

## SUNDAY BRUNCH

12:00 PM to 3:00 PM

CHAPEL AVE. & FIRST ST. • EAST PATCHOGUE, N.Y.

OPEN 6 DAYS A WEEK **475-9843** CLOSED TUESDAY

since 1898

# ROE agency inc.

▲ INSURANCE  
REAL ESTATE ▲

125 EAST MAIN STREET :: Patchogue, N.Y. (516) 475-4000



## CABOT'S FLORIST



• WEDDINGS  
• FUNERALS  
• HOUSE PLANTS  
• HOSPITAL ARRANGEMENTS

• FRUIT BASKETS  
• STUFFED ANIMALS  
• BALLOON BOUQUETS  
• DRIED & SILK ARRANGEMENTS

Business  
accounts  
welcome

91 Medford Ave., Patchogue  
(Rt. 112) South of Sunrise Hwy.  
Minutes from Brookhaven Hospital  
Next to Robertaccio Funeral Home

Order by Phone  
We Accept Major Credit Cards

DAILY DELIVERIES

**475-0408**

## WHO'S WHO (continued)

had the pleasure of working with Ron Howard, Rob Reiner and Jerry Zucker as the Associate Casting Director on the films PARENTHOOD, WHEN HARRY MET SALLY and GHOST. She led the search for unknowns, discovering Balhazar Getty, for the remake of LORD OF THE FLIES. She cast the television pilot "Parenthood" in 1989, giving Leonardo DiCaprio his first series-regular role. Most recently, she cast the MOW "Witness to the Execution" starring Tim Daly. Ms. Allan now heads up the Gateway Acting School, most recently directing their production of LITTLE WOMEN, and continues her freelance casting career.

**PHYLLIS GESSLER** (*Musical Director*) is happy to be returning to Gateway for this, her 4th full summer as Musical Director, having just finished our CAROUSEL. Other shows here include SUGAR BABIES, THE WILL ROGERS FOLLIES, THE KING & I, WEST SIDE STORY, GRAND HOTEL, NUNSENSE, GROUCHO, and her on-stage Gateway debut as Vi Petty, the piano-playing wife of Buddy Holly's producer in BUDDY. A snowbird at heart, Phyllis winters in Florida when not touring the U.S. or Asia. Four Asian tours have seen her at the musical helm of THE SOUND OF MUSIC, SOUTH PACIFIC, and an original Singaporean show, BUGIS STREET, in such countries as South Korea, Taiwan, Hong Kong, Malaysia, and Singapore.

**MINDY COOPER** (*Choreographer*) appeared on Broadway in SONG & DANCE. Off-Broadway performances include THE PETRIFIED PRINCE (NYSF), UP AGAINST IT (NYSF), GENESIS (NYSF), and THE CHOCOLATE AMBASSADOR (Vineyard). Regionally, she portrayed Vera Barnova in ON YOUR TOES (Gateway and Elmsford) and Fastrada in PIPPIN, and appeared in A FUNNY THING HAPPENED ON THE WAY TO THE FORUM (La Jolla), A CHORUS LINE, and ANIMAL CRACKERS (Paper Mill). Film credits include TO DREAM OF ROSES for HBO, and THRILL TO DEATH. Her choreographic works include the Professional Children's School's 80th Gala (NYC), Pittsburgh Civic Light Opera's JESUS CHRIST SUPERSTAR, the film BREAKFAST AT TIFFANY'S for Japan, and numerous commercials, industrials, and trade shows. She is proud to have been Assistant Choreographer on the Obie Award-winning revival of Sondheim's MERRILY WE ROLL ALONG (York). Ms. Cooper has been a member of Twyla Tharp Dance, the Feld Ballet, and The Kansas City Ballet. She is a founding member of THINGSEZISEE™, a dance/theater company making its New York debut at Pace University's Downtown Theatre this fall.

**MARIBETH HUNTER** (*Production Stage Manager*) comes to Gateway after stage managing SHLEMIEL THE FIRST for American Repertory Theatre in Cambridge and its pre-

Broadway tour to Florida, Philadelphia, and Stamford, CT. Now a resident of Philadelphia, her stage management work there has included HEARTS BEATING FASTER, a new play by Ralph Pape at Chefflenham Center for the Arts, THE MYSTERY OF LOVE, an original musical by Seku Sundiata and Doug Booth for the American Music Theatre Festival, and KABUKI ACHILLES, a co-production between Illinois Kabuki Theatre and People's Light and Theatre Company, where she was the resident production stage manager for two years. ACHILLES was performed in Illinois and Philadelphia, and toured to Cyprus, Hungary, and Japan.

**ERIN STEARNS AMICO** (*Costume Designer*) has designed for professional and educational theatre around the country. She has designed costumes for the premier season of the now prosperous Arden Theatre Company of Philadelphia including original productions of WHAT HO, JEEVES, and A LOVE OF LIGHT. Erin's credits include Opera Delaware for which she designed the sets for the world premier of the Charles Strauss Operetta CHARLOTTE'S WEB. Other recent costume designs include CAT ON A HOT TIN ROOF, OUR COUNTRY'S GOOD, BLUE WINDOW, THE MISER and MOTHER HICKS. Erin has designed many dance pieces including a national touring piece for the Leaving Ground Dance Co. of Seattle. She now works as a resident designer for Costume World, Inc. in her home state of Florida.

**KIM HANSON** (*Lighting Designer*) has been lighting shows at Gateway for many years. Some designs you may have seen include BABY, SINGING IN THE RAIN, AIN'T MISBEHAVIN', GROUCHO, ANYTHING GOES, and GYPSY. Kim has been the resident designer for Chen & Dancers, New American Ballet Ensemble, and, in Canada, the Manitou-Wabbing Arts Center. Some of the tours he has designed include A CHORUS LINE, THE MUSIC MAN, MY FAIR LADY, CAMELOT, and SONG AND DANCE. His designs for STARS OF THE AMERICAN BALLET have recently been seen in Korea, and he toured Asia with productions of 42nd STREET, HELLO DOLLY, SOME ENCHANTED EVENING, and ALADDIN.

**MARK CLARK** (*Sound Designer*) is celebrating his fourth year as Gateway's Resident Sound Designer; he has designed all mainstage productions, and especially enjoyed working on PHANTOM, ONCE ON THIS ISLAND, and GRAND HOTEL. Mark travelled to the Far East with GREASE and SOUTH PACIFIC, with stops in Hong Kong, Malaysia, Singapore, and Indonesia, and also toured the United States and Canada with MY FAIR LADY and 42nd STREET.

**wlim** 1580 AM  
LONG ISLAND MUSIC

Glenn Miller, Johnny Mathis, Benny Goodman,  
Nat King Cole, Frank Sinatra, Dinah Shore,  
Barbra Streisand, Perry Como, Doris Day,  
and the Lettermen...

## WHERE HAVE THEY GONE?

with  
**JACK ELLSWORTH**  
TO THE TOP OF THE DIAL

1580 AM Stereo



LONG ISLAND MUSIC BROADCASTING  
CORP.

Woodside Avenue, Patchogue, L.I. 11772  
(516) 475-1580

Coming to Gateway

*The Best of Times is Now!*  
**August 16 - September 2**

*La Cage  
aux Folles*

As a long-running Paris boulevard comedy, later as a highly original classic film and now as one of the decade's biggest Broadway musicals, **LA CAGE AUX FOLLES** has millions of fans. "The glitz, showmanship, good cheer, and almost unflagging tunefulness are all highly enjoyable," says the New York Times. Other critics rave, "Fast stepping extravaganza," "Gigantic hit," and "Naughty but nice." Sophisticated, and one step beyond belief. For mature audiences only.

*Forever*



*A Delightful Musical of the Wonder Years*  
**September 6 - September 23**

If you enjoyed BEEHIVE you'll absolutely love **FOREVER PLAID**, the musical that recalls some of the most enjoyable and cherished moments in your life - your first date, first prom, engagement party, wedding day. All the songs that were popular as a generation grew-up following World War II into the 50s and 60s. **FOREVER PLAID** is loaded with comedy surprises, too! WABC-TV said, "Perfect, a little bit of heaven for all of us." **FOREVER PLAID**, a new nostalgia is born!

*The Ultimate Beatles Revue*  
**September 27 - October 8**

Season Ticket Holders  
Take \$3.00 Off All  
"Twist and Shout!" Tickets!

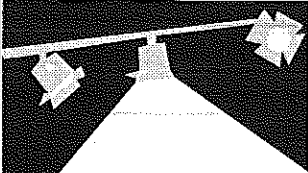
*Special Added Attraction*

The Beatles! John, Paul, George, and Ringo, who changed the history of music that affected the entire world. We have acquired exclusive rights to the sensational **Twist and Shout!**, an incredible simulation of the "Fab-Four," using members of the Broadway and National Touring Company. Gateway will present these Sing-A-Like, Look-A-Like Beatles performing all the great Beatle tunes from "I Wanna Hold Your Hand" and "Yesterday," to "Penny Lane" and "Hey Jude." Take a trip on the Magical Mystery Tour with the Beatles. It's an experience you'll never forget.

**ITWIST!**  
and  
**SHOUT!**

# BAY STREET THEATRE

1995 MAINSTAGE SEASON



## A Life in the Theatre

by DAVID MAMET

Directed by ROBERT KALFIN

June 14 – July 3

WORLD PREMIERE!

## Splendor

A Musical

Based on the novel by  
EDWARD SWIFT

Book by PETER WEBB

Music by STEPHEN HOFFMAN

Lyrics by MARK CAMPBELL

Directed by JACK HOFSSIS

July 12 – July 31

WORLD PREMIERE!

## By The Sea

By The Sea

By The Beautiful Sea

By TERENCE McNALLY

JOE PINTAURO and

LANFORD WILSON

Directed by JOE MANTELLO

Aug 9 – Sept 4

order by phone **(516)725-9500** at the Long Wharf  
Sag Harbor



## COLEMAN CESSPOOL SERVICE, INC. SCHWAB's Cesspool Cleaning

PRECAST CESSPOOLS INSTALLED

A. COLEMAN

Phone: (516) 475-1733 878-2010

Locally Owned and Operated For Over 50 Years

1 CHAPEL AVENUE  
EAST PATCHOGUE, NEW YORK 11772

RELIABLE SERVICE

# CHILDREN'S THEATRE

Live Musical Shows!

FRIDAY and SATURDAY MORNINGS AT 10:30 A.M.

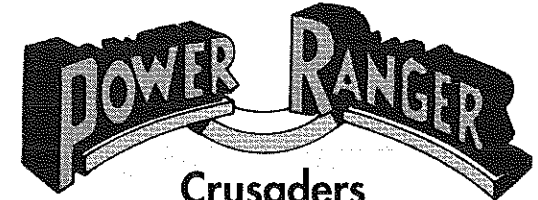
## Aladdin

7/21-22, 7/28-29

8/4-5

## BATMAN

And The



8/11-12, 8/18-19  
8/25-26, 9/1-2

Advance sale general admission tickets for all shows go on sale beginning May 3rd - \$6.00.  
Remaining tickets will be sold at the door the morning of the show - \$4.00 (cash only).  
Sorry, no mail or phone orders can be accepted.

Children ages 2 and older only.  
Shows subject to change without notice.

## Swan Bakery

"Serving the Community Since 1946"

Celebrating our second anniversary under  
new ownership

Official Baker to the Gateway Playhouse

Guy J. Gagliano Robert E. Roode

15 South Country Road  
East Patchogue, N.Y. 11772

Tel. (516) 475-9626

### YOUR CONSIDERATION IS APPRECIATED

All Performances at Gateway Playhouse finish with final curtain calls. As a courtesy to patrons and performers alike, please stay with us until the curtain calls have ended and the house lights have come up.

If you must leave the theatre during the performance for any reason, please use the center doors at the rear of the theatre only.



**MUSSELS**  
Served with red or white sauce ..... \$5.95  
**L.I. STEAMERS** ..... \$5.95

**SEAFOOD FRA' DIAVOLO**  
Includes: clams, mussels, crab legs, scallops, shrimp—red or white sauce on bed of linguine ..... \$18.95  
**BBQ BABY BACK RIBS** .. \$14.95  
**CHICKEN FRANÇAISE** .. \$12.95

**EVERY WEDNESDAY**  
**BONELESS SHELL STEAK**  
Includes: cup of soup, salad or coleslaw, bread, linguine, rice or fries, ice cream & coffee or tea **\$12.95**

**BEER • WINE • COCKTAILS**  
Open 7 Days: 11am-9pm - Fri. & Sat. till 10pm  
Sun. 5-9pm  
**Daily Lunch Specials**  
2109 Montauk Highway, Brookhaven  
286-9569

# Old Inlet Inn



*The Fine Dining Experience*  
Brian Finegan, Chef

Dinners from 6:00 PM  
Wed. & Thurs. from 5:00 PM  
Sunday Brunch 1-3:00 PM  
Sunday Dinner 3-7:00 PM

Old Fashioned Nor'Eastern  
Lobster Bake every Wednesday  
\$25<sup>00</sup>/person

Show Tune Sing-A-Longs on  
Fri. & Sat. with Jim Ahrend  
at the piano 9-1:00 AM

*Patio Dining*

108 So. Country Road  
Bellport 286-2650

## GATEWAY PLAYHOUSE STAFF

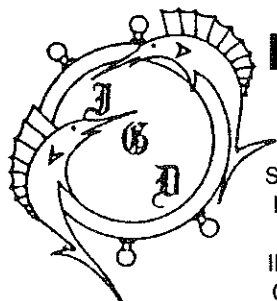
Executive Producers ..... Ruth and Stan Allan  
Producers ..... Paul Allan, John Hodge  
Associate Producer ..... Jeff Bellante  
General Manager ..... Gale Edwards  
Company Manager ..... Jerry Lapidus  
Director ..... Dom Ruggiero  
Choreographer ..... Mindy Cooper  
Musical Director ..... Phyllis Gessler  
Casting Director ..... Robin Joy Allan  
Production Stage Manager ..... Maribeth Hunter  
Set Designer - SHENANDOAH ..... Michael Anania  
Resident Set Designer ..... Michael Boyer  
Lighting Designer ..... Kim Hanson  
Technical Director ..... Chris Dono  
Sound Designer ..... Mark Clark  
Master Electrician ..... Wally Sudik  
Costume Designer ..... Erin Stearns Amico  
Wardrobe Supervisor ..... Jessica M. Minczeski-Anderson  
Wardrobe ..... Catherine LoCurto, Brenda Abbandandolo  
Assistant Stage Manager ..... Alison Mould  
Dance Captain ..... Gene Lubas  
Fight Captain ..... Craig Oldfather  
Technical Staff ..... Joe Buck, Don Roberts, Mark Anderson,  
Rick Styles, James Sturek, Allison Ronis  
Sound Consultant ..... Dominick Sack  
Children's Theatre Director ..... Kevin Halpin  
Children's Theatre Musical Director ..... Ellie Abrams Zayas  
Children's Theatre Conductor ..... Jim Ahrend  
Box Office Manager ..... Nancy Kana  
Group Sales ..... Christine Bellante  
Box Office Staff ..... Doris Lundegard, Nadine Hazard, Edith Menagus,  
Jayme Tamillow, Jeff Monteith, Lara Beaven,  
Renee Matthews, Angie Adee,  
Jennifer Faulkner, Nicole Marie La Flair  
Intern ..... Tara Bracco  
Head Usher ..... Al Pollog  
Ushers ..... Corinne Fagant, Jamie Fagant, Morgan Fagant,  
Irene Fritz, Rita Wehner, Doris McHoytt,  
Margot Whittemore, June Budd, Marie Trotto  
House Staff ..... Lynne Nofi, Gardner Fagant,  
Mike Payton, Richard Sells, Dana Nofi  
Maintenance/Landscaping Supervisor ..... Bob Nofi  
Painting/Maintenance ..... Don Harrison  
Concession Manager/Production Photographer ..... Mil Kana  
General Counsel ..... Ann L. Nowak and Associates

Costumes produced by Costume World  
Pompano Beach, Florida

**WARNING** - The photographing or sound recording of any performance is strictly prohibited.

Gateway Playhouse now offers a wireless sound enhancement system  
for the hearing impaired. Inquire at the box office for more information.

**FIRE NOTICE:** The exit indicated by a red light and sign nearest to the seat you occupy, is the shortest route to the outside. In the event of fire or other emergency, please do NOT run. WALK to that Exit. However, under normal circumstances, when leaving the Theatre, use the center rear exit. **SMOKING** is prohibited in the THEATRE, as required by a new Suffolk County NO SMOKING ordinance. Please do not smoke in any area designated "No Smoking." This renders the offenders subject to a fine or imprisonment or both.

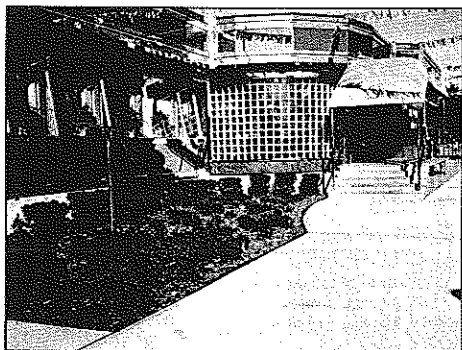


## PETER'S NEW ISLAND GRILL

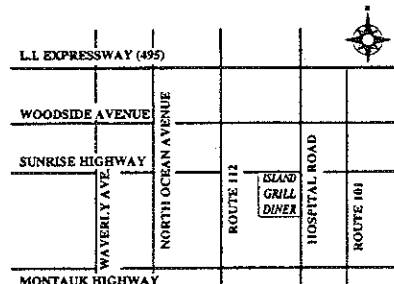
**DINER — RESTAURANT**

We specialize in:  
Seafood • Steaks • Chops  
Homemade Baked Goods  
OPEN 24 HOURS  
INCLUDING ALL HOLIDAYS  
Catering & Private Parties

- Special Breakfast Menu
- Sautéed Menu
- Pasta Menu
- Special Island Grill Seafood Combinations
- Complimentary Glass of Wine with Lunch or Dinner
- Special Continental Menu
- 15% Discount for Senior Citizens



140 HOSPITAL ROAD • SUNRISE HIGHWAY • E. PATCHOGUE  
516-475-2110 • FAX 516-475-2180





# ROYAL OAK

**Diner - Restaurant**

Station Road and Sunrise Highway - Bellport, New York 11713

HOURS: 6:00 A.M. - 2:00 A.M. SEVEN DAYS A WEEK

TEL. (516) 286-5757



## SEARLES GRAPHICS INC.

**Full Service Commercial Printing  
and Design Studio**

1457 Montauk Highway

P.O. Box 2099

East Patchogue, NY 11772

Tel: (516) 286-2943 Fax: (516) 286-3281

### We do Great WEDDINGS!

### We do Great COCKTAIL PARTIES!

1. We know this because our customers keep coming back for more!
2. We love working with people who really want a great party for their guests!
3. If you wish, you may inspect our kitchen and talk with our chef!
4. We can arrange for you to speak with some of our very happy customers!
5. We won't rush you, unless you're in a hurry!
6. Prices are always fair...they get lower as your number of guests go up!

**KURTS CATERERS Call 1-800-246-9948**

**OF**

**SMITHTOWN**

**Free menus and estimates!**

**Ask for Rich Youngren**

**Banquet Manager**



**KURTS CATERERS OF SMITHTOWN** is the official opening night caterer  
for the GATEWAY PLAYHOUSE

**DO YOU RECEIVE OUR FREE  
BROCHURE EACH YEAR?**

**If not, fill out the form and leave it in the box office.**

(Please Print)

Name \_\_\_\_\_

Address \_\_\_\_\_

\_\_\_\_\_ Zip \_\_\_\_\_

**BOX OFFICE HOURS**

Tuesday thru Saturday

12:30 - 10:00 p.m.

Sunday

12:30 - 8:30 p.m.

Monday

12:30 - 5:00 p.m.



**CREDIT CARD ORDERS**

**286-1133**

(Based on ticket availability)



**Mailing Address: Box 5, Bellport, New York 11713**