

ALL ACROSS EUROPE,
AS THE NEW DAY ARRIVES, SO DO WE.

AA



Bodiam Castle, Sussex, England.

It happens in London, Paris and Frankfurt just as the city starts to stir. In Munich and Brussels, in Zurich and Milan. In Stockholm, Glasgow, Duesseldorf, Manchester and Madrid. All across Europe, American arrives just as the day begins. And now with new service to London from Philadelphia, Raleigh/Durham and Nashville. For flight reservations or information about our affordable Fly ^{AA} Away Vacations[®] packages, call your Travel Agent or American at 1-800-624-6262.

American Airlines[®]
Something special to Europe.[™]

FRANCE ITALY SWEDEN SPAIN BELGIUM SWITZERLAND SCOTLAND ENGLAND GERMANY

GATEWAY PLAYHOUSE

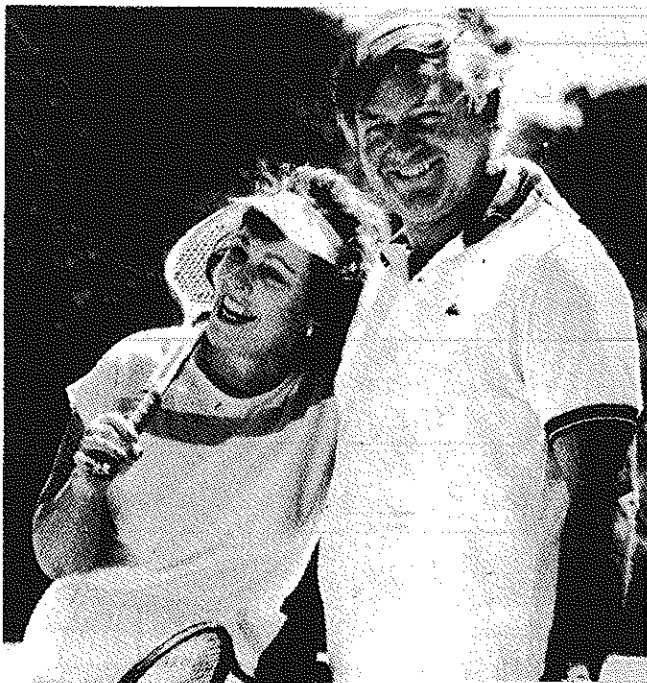
PLAYBILL

1996



**LAUGHTER
ON THE 23RD FLOOR**

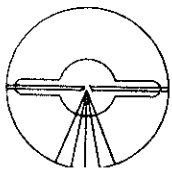
For peace of mind...
Take the time



MAMMOGRAPHY SAVES LIVES

Full Mammography accreditation by the American College of Radiology

BROOKHAVEN RADIOLOGIC ASSOCIATES, P.C.



HOSPITAL ROAD PROFESSIONAL CENTER
250 Patchogue-Yaphank Road
East Patchogue, New York 11772
(516) 475-1030

WALTER P. QUIGLEY, M.D., D.A.B.R.
RONALD S. HAMES, M.D., D.A.B.R.
SETH O. MANKES, M.D., D.A.B.R.
STEVEN EPSTEIN, M.D., D.A.B.R.

MARK J. LODESPOTO, M.D., D.A.B.R.
IRA J. LANGER, M.D., D.A.B.R.
MARILYN LERNER, M.D., D.A.B.R.

LONG ISLAND WORKS WITH WALK 97.5!



WALK'S NO REPEAT WORKDAY MEANS YOU WON'T
HEAR THE SAME SONGS OVER AND OVER AGAIN.
JUST A GREAT VARIETY ALL DAY LONG FOR EVERYONE
AT WORK. TUNE YOUR OFFICE RADIO
TO WALK 97.5 TODAY!

WALK FM 97.5

BRICK HOUSE BREWERY



"Come try our microbrewed beer and sample our delicious menu"

67 West Main St., Patchogue, NY 11772
(516) 447-BEER

ALLAN and ALLAN ARTS, LTD.
in association with
PAUL ALLAN and JOHN HODGE

presents

LAUGHTER ON THE 23RD FLOOR

by

NEIL SIMON

starring

TOM BORRILLO	LARRY CLARKE	TOM DEMENKOFF
DAMON DIMARCO	DANIEL ELI FRIEDMAN	JAMES HALLETT
DEBORAH JOLLY	MARISA REDANTY	ROGER RIFKIN

Associate Producer
JEFF BELLANTE

Sound Designer
MARK CLARK

General Manager
GALE EDWARDS

Costume Designer
DRENDA LEWIS

Lighting Designer
JOHN ROBINSON

Resident Set Designer
MICHAEL BOYER

Production Stage Manager
MARIBETH HUNTER

Casting Director
ROBIN JOY
ALLAN

Personnel and
Press Director
JERRY LAPIDUS

Company Manager
TIMOTHY
WILKINS

Directed by

DOM RUGGIERO

Produced by special arrangement with Samuel French, Inc.
45 West 25th Street, New York, NY 10010-2751

THE NEW...

Carmans River Inne

Experience The Relaxed Country Atmosphere At Our Copper-Topped Bar,
Featuring Eight Assorted Tap Beers, Daily Specials, Tantalizing Entrees,
Innovative Appetizers And A Bar Menu Available All Day.

CALL FOR
DIRECTIONS

Daily Lunch & Dinner Menu

Starting at **\$4.50**

Featuring -
Innovative Sandwiches, Pastas,
Salads & Entrees

10% OFF

LUNCH OR DINNER MONDAY - THURSDAY
For Gateway Ticket Holders



ATTENTION GOLFERS:
Bring In A Scorecard Or
Greens Fee Ticket & Receive
A Complimentary Cocktail

Come Join The Fun At the Carmans River Inne

HAPPY HOUR

Monday-Friday
TWO-FERS 4:00-7:00
With Cheese & Crackers

HOT BUFFET
FRIDAYS ONLY

450 Main Street,
Yaphank, NY
345-3302

LUNCH: Mon.-Sat. 11:30-4:00
DINNER: Mon.-Thurs. 4:30-10
Fri. & Sat. 4:30-11, Sun. 2pm-9pm

Wednesday Night...

30 & Over Night
\$2.00 Bar Drinks • \$2.75 16 oz. Tap
Imported & Micro Brew Beers
\$1.00 Buds & Miller Lights
FREE BUFFET
Music By M.C. Osso
Dance to the Music from the 50's & 60's

Bellport Country Club

ONE GREAT PERFORMANCE DESERVES ANOTHER

Fairway's Cafe

Upstairs at the Bellport Country Club (Elevator Available)

Serving Lunch and Dinner Tues-Sun, 11:30 to Closing

Specializing in Succulent Steaks and Chops

RESERVATIONS
ENSURE WE'LL
GET YOU TO THE
SHOW ON TIME!

Tuesday
"That's Italian"
Buffet Night
\$13.95
All You Can Eat
Served 4pm till Closing

Wednesday
Prime Rib Night
Complete Dinner
\$15.95
Served 4pm till Closing

COMPLETE
"EARLY BIRD"
Sunset Dinner
\$12.95
From
Wed.-Sat: 4pm till 6pm
Sun: 4pm till Closing

Spectacular
Sunday Brunch
BUFFET
\$13.95 Served
11:30am - 3pm
Sunset Dinners Served
4pm till Closing

Just 2 minutes West of Gateway



Veranda Dining • Gift Certificates Available • Reservations
South Country Road • Bellport Village • (516) 286-4227

Now THIS is an OLDIES station!



Elvis Presley
Credence
Clearwater Revival

The
Supremes

The
Beatles

The
Rascals

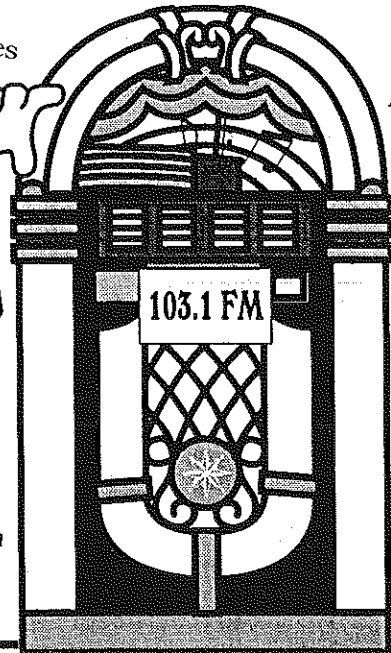
Beach
Boys

Aretha
Franklin

Elton
John

The
Rolling
Stones

The
Doors



B-103
Long Island's Oldies

For the best
& most oldies!
103.1 FM

Tremendous selection of fine jewelry, period jewelry and collectables.
Savings on unredeemed merchandise.
Written/Verbal and Estate Appraisals by appointment.

O'Neill's

"Servicing Manhattan To Montauk"
Jewelers and Collateral Loanbrokers

One East Main St., Patchogue
289-9899

Sean & Veronica Cantwell, Kathryn Cantwell

Bellport CHOWDER HOUSE



An Eating and Drinking Tradition

FULL MENU

FULL BAR

Open Daily For Lunch and Dinner
Seven Days A Week

CHAMPAGNE BRUNCH SUNDAY NOON TILL 3 P.M.

Sunday - Thursday till 11:00 p.m. Friday & Saturday till Midnight

**SPECIALIZING IN FRESH LOCAL SEAFOOD
AT AFFORDABLE PRICES**

*Before and After the Show You'll Want to Meet and Eat At
THE CHOWDER HOUSE*

TAKEOUT

CATERING

19 Bellport Lane • Bellport Village • 286-2343

CAST

(in order of appearance)

Lucas	TOM BORRILLO
Milt	ROGER RIFKIN*
Val	DANIEL ELI FRIEDMAN*
Brian	LARRY CLARKE*
Kenny	JAMES HALLETT*
Carol	MARISA REDANTY*
Max Prince	TOM DEMENKOFF*
Helen	DEBORAH JOLLY*
Ira	DAMON DIMARCO



* Actors employed in this production are members of Actors' Equity Association, the union of Professional Actors and Stage Managers in the United States.

ssdc

Directors employed in this production are members of The Society of Stage Directors and Choreographers, Inc.

MUSIC

"Swanee" by George Gershwin and Irving Caesar used by permission of WB Music Corp. and by permission of Irving Caesar Music Corp. The worldwide copyrights in the music of George Gershwin for this presentation are licensed by the Gershwin family.

"The Christmas Song" ("Chestnuts Roasting On An Open Fire") by Mel Torme and Robert Wells. Used by permission of Edwin H. Morris & Company—A Division of MPL Communications, Inc.

YOUR CONSIDERATION IS APPRECIATED

All Performances at Gateway Playhouse finish with final curtain calls. As a courtesy to patrons and performers alike, please stay with us until the curtain calls have ended and the house lights have come up.

If you must leave the theatre during the performance for any reason, please use the center doors at the rear of the theatre only.



Dinner Theatre Package

Enjoy a luxurious evening with a delicious four-course dinner to enhance your theatre experience.

Package includes:

- ★ Two theatre tickets
- ★ Deluxe overnight guest accommodations
- ★ Four course dinner for two
- ★ Indoor pool, whirlpool, and exercise facilities
- ★ Complimentary HBO
- ★ Baby-sitting services available
- ★ Limousine service available by Tran-Star Executive Transportation



Package Price

\$109.00 Per Person

based on double occupancy
 Package price does not include tax. Package available 7 days a week. Advance reservations required.

Please call 516/232-3000
 or 1-800-333-3333
 and request
**Gateway Dinner
 Theatre Package.**



See The Show
 And Stay The Night



Also Serving Breakfast

160 South Country Road
 Bellport, NY 11713
 (516) 286-8588

Old Inlet Inn



The Fine Dining Experience

Walter Roe, Proprietor
 Brian Finegan, Chef

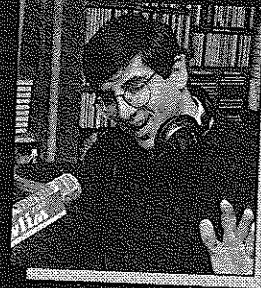
Dinners from 6:00 p.m.
 Thurs. & Sun. from 5:00 p.m.

Old Fashioned
 Nor'Eastern Lobster Bake
 every Wednesday \$28.00/person

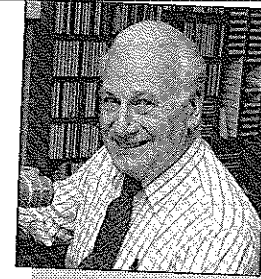
Show Tune Sing-A-Longs on
 Fri. & Sat. with Jim Ahrend
 at the piano 9-1:00 AM

Patio Dining *Season Ticket Holders
 10% Discount*

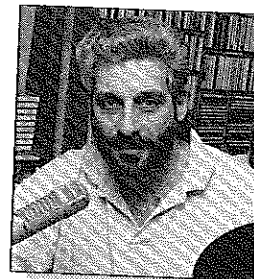
108 So. Country Road
 Bellport 286-2650



Rich Keith, 5:30-10:00 a.m.



Jack Ellsworth,
 "Memories in Melody"
 10:00 a.m. - Noon



Bob Stern, Noon - 3:00 p.m.
 1-2 BDWY. Hollywood Show



Gil Ellis, 3:00 - 7:00 p.m.

Join Your **wlim** ^{STEREO}
 Family

Monday - Friday

- Big Bands
- Popular Standards
- Local & Community News
- Daily Prizes

GLENN MILLER

FRANK SINATRA

ROSEMARY CLOONEY

BARBRA STREISAND

NAT KING COLE

DORIS DAY

BENNY GOODMAN

TONY BENNETT

BING CROSBY

wlim 1580 AM • Long Island Music

Harbor Side Restaurant



"Incomparable Seafood Restaurant"

Complete Lunches from \$7.95

Complete Early Bird Menu

Mon.-Fri. 3:30 p.m. - 5:45 p.m.

Starting at **\$11.95**

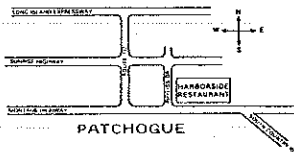
Appetizers from \$4.50

Dinners from \$14.95

*Special Rates for
Theatre Groups.
Call for more information.*

Let us plan your next
party from 25 to 125

Located on the corner of East Main St.
(Rt. 27A) and Phyllis Drive



Open 7 days a week
at 11:30 a.m.

Highly Recommended:
***Newsday, Daily News
NY Post & The
Practical Gourmet

503 E. Main Street
Patchogue, New York
(516) 654-9290

SYNOPSIS OF SCENES

An office on the 23rd floor of a building on
57th Street, New York City

ACT I

March 1953

ACT II

Scene 1: Seven months later

Scene 2: Christmas Eve

ACT III TAKES PLACE AT



Patchogue Floral's Fantasyland

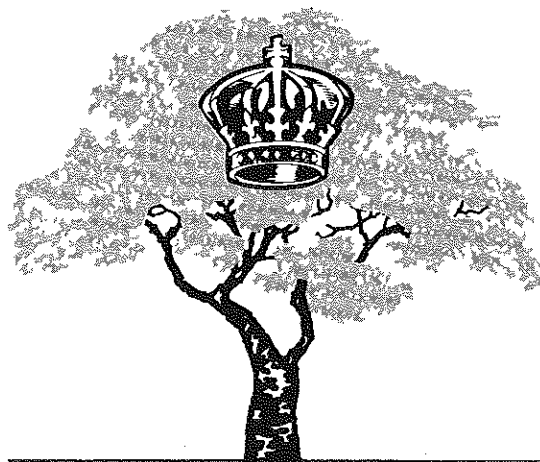


COME
BROWSE

LARGEST EMPORIUM CATERING TO
THE ESTHETIC PROCUROR OF UNUSUAL HOME DECOR —

Giftware - Art Crafts - Custom Permanent Arrangements

10 Robinson Avenue • East Patchogue • 475-2059



ROYAL OAK

Diner - Restaurant

Station Road and Sunrise Highway - Bellport, New York 11713

HOURS: 6:00 A.M. - 2:00 A.M. SEVEN DAYS A WEEK

TEL. (516) 286-5757

CABOT'S FLORIST



- WEDDINGS Teleflora
- FUNERALS
- HOUSE PLANTS
- HOSPITAL ARRANGEMENTS

- FRUIT BASKETS
- STUFFED ANIMALS
- BALLOON BOUQUETS
- DRIED & SILK ARRANGEMENTS

*Business
accounts
welcome*

91 Medford Ave., Patchogue
(Rt. 112) South of Sunrise Hwy.
Minutes from Brookhaven Hospital
Next to Robertaccio Funeral Home

Order by Phone
We Accept Major Credit Cards

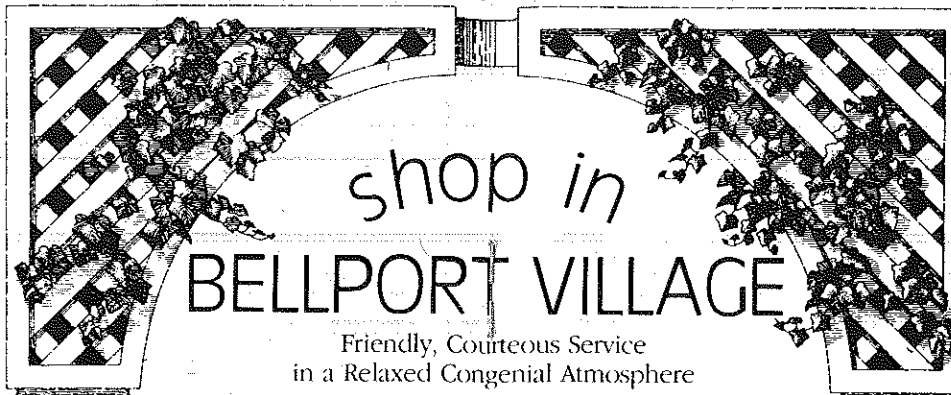
DAILY DELIVERIES

475-0408

Volunteers Wanted


Gateway Playhouse is seeking
volunteer ushers to join its
Volunteer Corps

Call 286-0555 for
more information



shop in
BELLPORT VILLAGE

Friendly, Courteous Service
in a Relaxed Congenial Atmosphere



AFTER THE SHOW STOP BY
AUNT EMMIE'S
FOR SOME

- Homemade Ice Cream • Old Fashioned Candies
- Handmade Chocolates • Corona Italian Ices • All Natural Frozen Yogurt • Sugar-Free Candies • Italian Cookies • Cappuccino
- Gourmet Coffee and much more.

OUTSIDE TABLES Just turn left at the light
8 Bellport Lane . Bellport, New York 11713 . (516) 286-2762



"We're Patient People"

AMATO FAMILY CHIROPRACTIC

16-2 STATION ROAD
BELLPORT, NY 11713

516-286-2300

Infant, Child & Adult Care

Dr. Frank J. Amato

FAX 516-286-6080 516-286-0510
SENTRY HARDWARE
BELLPORT HARDWARE
PITTSBURGH PAINTS
9 BELLPORT LANE
ARTHUR NADEAU BELLPORT, NY 11713

Tel: 286-0395
**LYONS
FUEL OIL CO., INC.**
23 Station Road, Bellport, N.Y.

IGA WALLEN'S MARKET
Choice Meats & Poultry • Fresh Produce & Dairy
Quality Service in a Friendly Neighborhood Market
Main Street, Bellport NY 286-0202

BELLPORT PAINT & WALLPAPER, INC.
COMPLETE PAINT & WALLPAPER SUNDRIES

CABOT STAINS
OLYMPIC PAINT & STAINS
145 South Country Rd.
Bellport, NY 11713
516-286-5850



Porto Bello

RISTORANTE

FINE ITALIAN CUISINE

PIZZA
PASTA
PASTRY

Capture
the
Moment

Located at:
14 STATION RD. • BELLPORT, LI
for reservations or take out, call:
286-3300 • 286-3344

HOURS:
Mon-Thurs 11am-11pm
Fri, Sat 11am-1am
Sun 11am-11pm

**THE BANK OF
NEW
YORK**
LONG ISLAND REGION

24-hour ATM
**BELLPORT BANKING
OFFICE LOCATED AT:**

32 Station Road
Bellport, New York 11713
Virginia Asero
Assistant Vice President
(516) 286-4200
Member FDIC 1986 The Bank of New York

**NEW
VISIONS**
UNISX HAIR DESIGNERS
full service hair and
nail salon



Create the Look
that Adds
Dimension and Style
to Your Active Life
MANICURES, PEDICURES, WAXING

155 S. Country Road, Bellport, N.Y. 11772
(516) 286-0216

Bellport Delicatessen

Catering is our Specialty

124 Main Street, Bellport
(516) 286-0444 • FAX 286-6666

Open 5:30 a.m. - 10:00 p.m. 7 Days a Week
Open for Breakfast and Lunch Specials
Homemade Muffins • Gourmet Coffees

Coming to Gateway

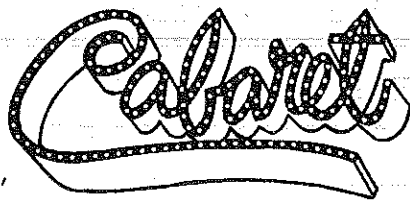
A Sexy, Bizarre and Boldly Decadent Musical
September 4 - September 21

Wilkomen-welcome to the world of "Cabaret"

— The Kit Kat Klub, a cross-section of Berlin night-life, thronged with middle class patrons, prostitutes and homosexuals—some of the characters of a

doomed city in 1929. Enter Sally Bowles, a young English girl trying to get by. In pre-war Nazi Germany, that's easy, "everyone earns money in strange, illegal ways."

CABARET is a show complete with every element. It's fun, sexy, intense, tragic, thought provoking and deeply moving. Decadent society is displayed in a raunchy and brash style by Sally and her fellow dance hall girls. The erotic choreography and Kander and Ebb's catchy score make this musical truly unique. A riveting experience. After all - "Life is a Cabaret!"



Special Added Attraction!

Season ticket holders save
10% off all TOMMY tickets!

September 25 - October 6

Gateway is proud to be the first theatre on Long Island to produce "**TOMMY**," the musical that took Broadway by storm, winning 5 Tony Awards, 6 Drama Desk Awards and 3 Outer Critics Circle Awards, including, "Best Musical." The miraculous story of the deaf, dumb and blind kid who achieves stardom as "The Pinball Wizard" will thrill all ages. Simply the greatest rock musical ever, by one of the greatest rock bands of all time, "The Who." The songs, that turned into hits for Elton John and Tina Turner, are performed in a whirlwind of high tech visuals and electrifying staging and choreography. The New York Times said, "An entertainment juggernaut that lifts the audience right out of its seats!" We agree with Dennis Cunningham of CBS/TV..."Tommy is Awesome!" Come see this "new sensation" for yourself!

WHO'S WHO (in alphabetical order)

TOM BORRILLO (*Lucas*) most recently appeared as Oliver in AS YOU LIKE IT (ASCIA). He is a Certificate Graduate of ACT (SF) and Circle in the Square (NY), and has worked all over the map (North America). Favorite roles and shows: Don Armado in LOVE'S LABOURS LOST, God in CREATION OF THE WORLD..., TRUE WEST, O'Neill's SEA PLAYS, and SEASCAPE WITH SHARKS AND DANCERS. Tom is a long-standing member of the national improv troupe, "Comedy Sportz," and a poet. He can currently be seen as Miller Red's Bean Skin Rug Man. He dedicates this show to his mother and father, who taught him simplicity and compassion.

LARRY CLARKE (*Brian*) last appeared in the Barrow Group production of GOOD at One Dream Theatre. He also recently performed in the premiere of Diverging Devotion at the Irish Arts Center. Regional: HAMLET (with Boyd Gaines), MAP OF THE WORLD, MAJOR BARBARA, AUNT DAN & LEMON, PARADISE LOST, in two seasons at Baltimore's Center Stage. Larry is the founder of the sketch comedy group "The Bad Apples," and is a graduate of Towson State University.

TOM DEMENKOFF (*Max Prince*), a graduate of Ithaca College, debuted on Broadway in the original production of GREASE. Off-Broadway, he performed all the male roles in the long-running hit GODSPELL, and originated leading characters in the NY debuts of I PAID MY DUES and TOM JONES. Tom has toured South America with THE PHANTOM OF THE OPERA, and enjoyed regional theatre bows in SILVER DOLLAR (Goodspeed), ZOOT SUIT (Mark Taper Forum), CLUE—THE MUSICAL (Boston Street Theatre), THAT'S LIFE! (DCT), I PAID MY DUES (Ford's Theatre), MR. ROBERTS and INHERIT THE WIND (Western Stage), 1776 (NMOB), and JULIUS CAESAR, AS YOU LIKE IT, and THE WINTER'S TALE (Monmouth). On TV he has been featured on LAW & ORDER, GENERAL HOSPITAL, FANTASY ISLAND, EIGHT IS ENOUGH, LOTTERY, INSTITUTE FOR REVENGE, BATTLESTAR GALACTICA, and THE RIGHTEOUS APPLES. Most television viewers still remember him as the mountain climber who "...got the eaties for his Wheaties before he climbed 2,000 feeties..." Feature film credits include NEW YORK CROSSING, SURF NAZIS MUST DIE, SGT. PEPPER'S LONELY HEARTS CLUB BAND, ROLLERBLADE, SPLIT IMAGE, and BATTLESTAR GALACTICA—THE MOVIE.

DAMON DIMARCO (*Ira*) hails from the central New Jersey area and is proud to have recently completed his M.F.A. at the Professional Actors' Training Program at Rutgers University where he studied with William Esper. His favorite roles

include Ferdinand in Shakespeare's THE TEMPEST, Lexy Mill in Shaw's CANDIDA, and Judge D'Andrea in Pirandello's THE LICENSE, which he recently completed doing at the Miranda Theater. You may have seen him this month on episodes of GUIDING LIGHT and AS THE WORLD TURNS. Damon is pleased with the opportunity of playing Ira Stone, "a hilarious role in a horde of hilarious roles" and is especially excited to work with such a varied and talented cast!

DANIEL ELI FRIEDMAN (*Val*) was last seen playing the role of Isaac in James Sherman's "new" play, THE GOD OF ISAAC. He holds a B.A. in theatre from UCLA and is delighted to be making his Gateway debut. Other credits include both National and International tours of LES MISERABLES as Claquesous, where he also performed the role of Thenardier, and EQUUS in Thailand, as Alan Strang. Off-Broadway: Sparky in FOREVER PLAID and Puck in New Stages at Circle Rep's production of SOME SUMMER NIGHT. Regional: Mendel in FALSETTOS and Scott in THE WONDER YEARS, directed by Ron Link. Commercials include Tri-State Area Toyota with Alan King and Seaman's Furniture. Daniel gratefully acknowledges his parents, Ken and Marilyn, for their unending support and love.

JAMES HALLETT (*Kenny*) comes to Gateway after playing 89-year-old Jackie and 30-year-old Marcus in the Off-Broadway production of JASPER IN GRAMERCY PARK at Primary Stages. He recently played Sir Toby Belch in the Yale Rep's TWELFTH NIGHT, Colin (the culinary artist/serial killer) in the musical comedy THE HOUSE OF NANCY DUNN at LaMama E.T.C., and Kenneth/Percy in THE ADVENTURES OF AMY BOCK at Ensemble Studio Theatre's Octoberfest. James is a 1995 graduate of the Yale School of Drama's MFA program in Acting, where he performed in over 25 productions, including: Lopakhin in THE CHERRY ORCHARD, Shylock in THE MERCHANT OF VENICE, Edgar in KING LEAR, and Adolf in THE FATHER. He is pleased to be making his first appearance at Gateway.

DEBORAH JOLLY (*Helen*) appeared on Broadway in THE ROSE TATTOO as Estelle Hohengarten, with Mercedes Ruehl. She has appeared at many regional theatres, including American Repertory Theatre and the McCarter Theatre in BORN YESTERDAY (Billie Dawn), ROAD TO NIRVANA (Nirvana), WOMAN IN MIND, SARCOPHAGUS, TARTUFFE, I HATE HAMLET, DIVIDING THE ESTATE, and SAVAGE IN LIMBO. Off-Broadway: MCC, Synchronicity Space, and Westbank. Film: recently wrapped NEW YORK CROSSING with Giancarlo Giannini. TV: ROSEANNE, LOVING, and numerous commercials.

WHO'S WHO (continued)

MARISA REDANTY (*Carol*). Recent stage credits include THE SISTERS ROSENSWEIG (1st National Tour) LOST IN YONKERS (as Bella, opposite Jayne Meadows) and DAVID'S MOTHER (Pasadena Playhouse). TV: LAW & ORDER, L.A. LAW, TRIALS OF ROSIE O'NEILL (recurring as Linda Vargas), DREAM ON (as Linea Weiss), and many commercials and voice-overs. After working as an acting coach for an NBC sitcom in LA, Marisa has resumed private coaching in NY, which she loves. Spending August at Gateway is terrific, topped only by doing one of her favorite Neil Simon plays. This one's for "T," "Dafney," and "Pooper."

ROGER RIFKIN (*Milt*) has played Off-Broadway and in regional theatres across the country, in roles including Doolittle in Commonwealth Musical Stage's MY FAIR LADY, Scapy Smith in Fulton Opera House's THE GIFTS OF THE MAGI, Mac in the first NYC revival of Rodgers & Hammerstein's PIPE DREAM for Musicals in Concert, Moonface in ANYTHING GOES and Max Detweiler in THE SOUND OF MUSIC with Thom Christopher, both for the Tri-State Center for the Arts, Ali Hakim in the Candlewood Playhouse 50th Anniversary production of OKLAHOMA!, Mr. Appopolous in Equity Library

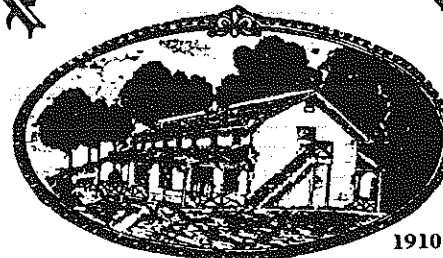
Theatre's WONDERFUL TOWN, and Bottom in A MIDSUMMER NIGHT'S DREAM for Connecticut Stage Inc. Other roles include Nathan Detroit in GUYS & DOLLS, Sandor in BELLS ARE RINGING, Dr. Einstein in ARSENIC AND OLD LACE, and Albert in A THOUSAND CLOWNS. Thank you, Mom and Dad.

MARIBETH HUNTER (*Production Stage Manager*) returns for her second season at Gateway. Her favorite project so far is SHLEMIEL THE FIRST, an original Yiddish musical comedy which she stage managed for the American Repertory Theatre in Cambridge, MA, and its pre-Broadway tour. She has also worked with Cheltenham Center for the Arts, the American Music Theatre Festival, the Philadelphia Drama Guild, the Philadelphia Festival for New Plays, the George Street Theatre, and People's Light and Theatre Company, where she was the resident production stage manager for two years, including tours to Cyprus, Hungary, and Japan. Maribeth is dedicating her work this summer to her mother.

PAUL ALLAN and JOHN HODGE (*Producers*) have been theatrical partners since 1982. Between the two of them, they have over 30

Wine Grove Inn

On The Swan River



Open Weekdays
11:30 A.M.
Saturday
11:30 A.M.
Sunday
12:00 P.M.

Daily
Blackboard
Specials!

EARLY BIRD SPECIALS

Monday thru Saturday 3:30 p.m. to 6 p.m.

LUNCH

Monday thru Saturday 11:30 a.m. to 3 p.m.

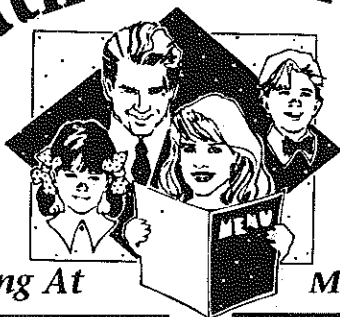
SUNDAY DINNER SPECIALS

12:00 p.m. to 5 p.m.

CHAPEL AVE. & FIRST ST. • EAST PATCHOGUE, N.Y.

OPEN 6 DAYS A WEEK **475-9843** CLOSED TUESDAY

South Country Inn



Fine Dining At

Moderate Prices

Extensive Menu

Special Attention

Continental Cuisine
Early Bird Specials

Given to Theater Goers...We'll
get you to the show on time!

Theater Groups

Welcome for Lunch and Dinner

668 South Country Road, East Patchogue

Open 6 days **758-1919** Closed Monday

Open
12 Noon
to 11 PM
Daily

years of experience, ranging from Broadway and Off-Broadway to Regional Theatre and the last 15 years of Gateway productions. They worked on the NYC productions of GROUCHO, DIAMONDS, JUST SO, and PACIFIC OVERTURES. They have produced the national and international tours of SHENANDOAH, SWEET CHARITY, ANYTHING GOES, SONG AND DANCE, CAMELOT, A CHORUS LINE, SOUTH PACIFIC, 42nd STREET, and OLIVER. They had the distinguished honor of bringing the first American-produced musical to Singapore with their touring production of THE SOUND OF MUSIC in 1990. For the last three years they have been operating Gateway's Candlewood Playhouse in New Fairfield, Connecticut. Upcoming projects include international tours of THE WIZARD OF OZ and SOPHISTICATED LADIES.

DOM RUGGIERO (*Director*) has directed numerous productions at Gateway for the past 7 seasons, including the musicals PHANTOM (Yeston/Kopit), ONCE ON THIS ISLAND, CAROUSEL, THE SECRET GARDEN, INTO THE WOODS, BEEHIVE, LITTLE SHOP OF HORRORS and CITY OF ANGELS, and the comedies RUMORS and LEND ME A TENOR. He has directed for theatres across the U.S., including Theatre-by-the-Sea, Seaside Music Theatre, and the NY City

Opera. Last season, Dom made his Off-Broadway directorial debut at Playhouse 91 with a new musicalization of the Anne Frank Story, THE SECRET ANNEX. International credits include AIN'T MISBEHAVIN' in Australia, ANYTHING GOES in the Orient, and productions in Canada, Great Britain, and South America. As producer of his own company, the Times Square Minyon, Inc., Dom produced Red Buttons (direct from his Broadway concert) for the 1996 Florida season. This season his company is preparing a new musical revue to play Florida as a pre-NYC tryout, scheduled for Off-Broadway next spring. Dom is the proud recipient of the 1994 Connecticut Critics Circle Best Director and Best Musical Awards for PHANTOM, and of the Florida Theatre Critics Association Best Director Awards for INTO THE WOODS and LITTLE SHOP OF HORRORS. Dom is a graduate of NYU's School of the Arts.

ROBIN JOY ALLAN (*Casting Director*) spent her childhood performing at Gateway, and after directing, teaching, and some producing, began casting in Manhattan in 1985. She worked with several Off-Broadway companies and then spent five years in Los Angeles, where she had the pleasure of working with Ron Howard, Rob Reiner, and Jerry Zucker as the Associate Casting Director on the films PARENTHOOD, WHEN HARRY MET

ALL COUNTY

Home Security Systems
Residential • Commercial



WIRELESS

- Burglar Alarms
- Heat Detectors
- Fire
- Central Station
- Freeze Alert
- Medical Alert

FREE ESTIMATES

Authorized Distributor For
Dynamark • AllGuard
Safety Security Products

(516) 286-8330

All County Home Security Systems
680 South Country Road
East Patchogue, New York 11772



Restaurant

Come for dinner before the show
1/4 mile East of Station Road
on Montauk Highway, Brookhaven

Mon. thru Thurs. 11a.m.-9p.m.
Fri. & Sat. till 10 p.m.

Daily Specials

- *Roast Duckling
- *Linguini with Red or White Clam Sauce
- *L.I. Steamers or Mussels

Every Wednesday

*Boneless Shell Steak \$12.95
2109 Montauk Highway, Brookhaven



286-9569



ROE agency inc.

INSURANCE

SINCE 1898

Walter Roe, Pres. Pat Mankowski, VP
Virginia Flynn, VP Sharon Maler, VP

125 EAST MAIN STREET
PATCHOGUE, NY 11772-3139

(516) 475-4000

FAX (516) 475-7648



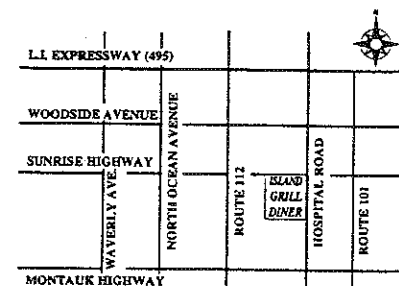
ISLAND GRILL

DINER - RESTAURANT

We specialize in: Seafood . Steaks . Chops
Homemade Baked Goods

OPEN 24 HOURS
INCLUDING ALL HOLIDAYS
Catering & Private Parties

- Special Breakfast Menu
- Sautéed Menu
- Pasta Menu
- Special Island Grill Seafood Combinations
- Complimentary Glass of Wine with Lunch or Dinner
- Special Continental Menu
- 15% Discount for Senior Citizens



140 Hospital Road . Sunrise Highway,
E. Patchogue 516-475-2110 . FAX 516-475-2180

WHO'S WHO (continued)

SALLY and GHOST. She led the search for unknowns, discovering Bathazar Getty, for the remake of LORD OF THE FLIES. She cast the television pilot of PARENTHOOD in 1989, giving Leonardo DiCaprio his first regular-series role, and most recently cast the Movie-of-the-Week WITNESS TO THE EXECUTION, starring Tim Daly. Ms. Allan now heads up the Gateway Acting School in Bellport, and continues her freelance casting career.

MICHAEL BOYER (Set Designer) has designed over 150 productions for Off-Broadway, summer stock, community theatre, university and amphitheater productions, ranging from CAT ON A HOT TIN ROOF to MORTICIANS IN LOVE. His sets have been seen from Singapore to Stockholm and from Anchorage to Key West. Winters, Michael works at the Tennessee Williams Fine Arts Center and the Waterfront Playhouse in Key West.

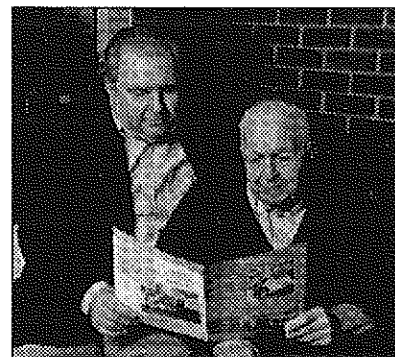
DRENDA LEWIS (Costume Designer) is Resident Designer for Costume World, Inc., the most prestigious Theatrical Costume House in the industry. Credits at Costume World include EVITA (Robert Young Touring Company), THE MOST HAPPY FELLA (New England Tour), THE SECRET GARDEN (Merry-Go-Round Playhouse), and last

season's CAROUSEL at Gateway. Drenda was Resident Designer for Casa Manana Theatre in Ft. Worth for 7 years and also for the Granbury Opera House in Granbury, Texas.

JOHN A. ROBINSON (Lighting Designer). This is John's debut design at Gateway Playhouse. He has recently designed Off-Broadway and Off-Off-Broadway. John is currently the master electrician at Gateway's Candlewood Playhouse in Connecticut, where he designed lights for The SOUND OF MUSIC and SEVEN BRIDES FOR SEVEN BROTHERS this year. He was also the master electrician for Gateway's National Tour of SWEET CHARITY. John holds a B.A. in Theatre from Wagner College.

MARK CLARK (Sound Designer) is celebrating his 5th year as Gateway's Resident Sound Designer. He has designed all mainstage productions, and especially enjoyed working on PHANTOM, ONCE ON THIS ISLAND, and GRAND HOTEL. Mark travelled to the Far East with GREASE and SOUTH PACIFIC, with stops in Hong Kong, Malaysia, Singapore, and Indonesia, and toured the U.S. and Canada with MY FAIR LADY and 42nd STREET.

Looking to Get Away?



"I was able to enjoy my time away, knowing that Dad was being well-taken care of."

Steve Panoros

THE MCGUIRE GROUP
HEALTH CARE FACILITIES

We provide temporary care for your loved one while providing you with peace of mind, as you take a well-deserved rest from care-giving.

Brookhaven Health Care Facility

801 Gazzola Drive
East Patchogue, NY 11772
447-8800

Smithtown Health Care Facility

391 North Country Road
Smithtown, NY 11787
361-2020

MAYER'S
Flower cottage

"We express your feelings — *beautifully*"

Flowers delivered anywhere
Weddings and parties our specialty

400 Medford Avenue, Patchogue, NY 11772 (516) 475-1779

STAGE DOOR **SCHOOL OF**
Dance

BALLET . POINT . TAP . JAZZ . TAP & BALLET COMBO . LYRICAL . HIP HOP

Fall
Registration
Begins
August
12th

25 PATCHOGUE-YAPHANK RD.
E. PATCHOGUE

Pre-School thru Adults

Family Discounts

Call

654-8858

*Celebrating Our
20th Anniversary*

Artistic Director
Diane Giattino

ACTING AND
MUSICAL THEATRE
TRAINING

storytelling & theatre games classes for 5-8 year-olds

all levels of acting for all ages thru adult

television auditioning and musical comedy classes



GATEWAY ACTING SCHOOL

now enrolling! 286-9014

LEARN FROM THE PROFESSIONALS!

CHILDREN'S THEATRE

Live Musical Shows!
Friday and Saturday mornings at 10:30 a.m.

TOY
FACTORY

AUGUST 16, 17 • AUGUST 23, 24
AUGUST 30, 31

Advance general admission tickets now on sale - \$6.00

Remaining tickets will be sold at the door, the morning of the show - \$4.00 (cash only)

Sorry, no mail or phone orders can be accepted.

Children ages 2 and older only. Shows subject to change without notice.



Always Gives You
100%

BAY STREET THEATRE

presents
the World Premiere of

VIRGOL IS STILL THE FRAG BOY

by
Lanford Wilson

Five friends summering in the Hamptons find themselves sharing lap tops, love, laughter and some life lessons in this hilarious and poignant new comedy.

Directed by Marshall W. Mason

August 14 - September 9

This special commission has been underwritten by VANITY FAIR.

ORDER BY PHONE (516) 725-9500

On the Long Wharf, Sag Harbor



COLEMAN CESSPOOL SERVICE, INC. SCHWAB's Cesspool Cleaning

PRECAST CESSPOOLS INSTALLED

A. COLEMAN

Phone: (516) 475-1733 878-2010

Locally Owned and Operated For Over 50 Years

1 CHAPEL AVENUE
EAST PATCHOGUE, NEW YORK 11772

RELIABLE SERVICE

GATEWAY PLAYHOUSE STAFF

Executive Producers Ruth and Stan Allan
Producers Paul Allan, John Hodge
Associate Producer Jeff Bellante
General Manager Gale Edwards
Personnel & Press Director Jerry Lapidus
Company Manager Timothy Wilkins
Director Dom Ruggiero
Casting Director Robin Joy Allan
Production Stage Manager Maribeth Hunter
Assistant Stage Manager Rachel Semmel
Resident Set Designer and Technical Director Michael Boyer
Assistant Technical Director Jim Kane
Lighting Designer John Robinson
Sound Designer Mark Clark
Shop Foreman Don Roberts
Master Electrician Mathew Dacey
Costume Designer Drenda Lewis
Wardrobe Supervisor Marianne Dominy Pate
Wardrobe Catherine LoCurto, Lisa Brownstein, Josephine Funaro
Technical Staff James Sturek, Joe Buck, Stacy Cooper, Jennifer Kolikoff,
Mike Carey, Walt Adamko, Chris Dono, Joe Rudd, Amy Sand, Nick Cardone,
Denise Carey, Tommy Grasso, Dan Styles, Joseph Sturek
Scenic Artist Jeff Matteo, Melissa Vignato
Prop Master Rick Styles
Children's Theatre Director Joe Minutillo
Children's Theatre Musical Director Peter Pece
Children's Theatre Stage Manager Jill Andrea
Sound Consultant Dominick Sack
Box Office Manager Nancy Kana
Box Office Staff Nadine Hazard, Laurie Hunter, Nicole LaFlair,
Melinda Markstaller, Edith Mengus, Trudi Millan,
Jeff Monteith, Barbara Wright
Group Sales Christine Bellante
Head Usher Al Pollog
Ushers Jill Andrea, June Budd, George Eleazer III,
Irene Fritz, Mick McGreeve, Doris McHugh, Chris Millan, Trudi Millan,
Marie Rachek, Marie Trotto, Jackie Tures, Rifa Wehner, Patricia Yurdiga
House Staff Lynn Nofi, Hugh Cullen,
Larry Martin, Robert Pavanello, Peter Martin, Gregory Mast
Maintenance/Landscaping Supervisor Bob Nofi
Painting/Maintenance Don Harrison
Concession Manager/Production Photographer Mil Kana
General Counsel Ann L. Nowak and Associates

**Costumes Produced by Costume World
Pompano Beach, Florida**

WARNING - The photographing or sound recording of any performance is strictly prohibited.

Gateway Playhouse now offers a wireless sound enhancement system
for the hearing impaired. Inquire at the box office for more information.

FIRE NOTICE: The exit indicated by a red light and sign nearest to the seat you occupy, is the shortest route to the outside. In the event of fire or other emergency, please do NOT run. WALK to that Exit. However, under normal circumstances, when leaving the Theatre, use the center rear exit. SMOKING is prohibited in the THEATRE, as required by a new Suffolk County NO SMOKING ordinance. Please do not smoke in any area designated "No Smoking." This renders the offenders subject to a fine or imprisonment or both.

SOMETHING IS ALWAYS GOING ON AT...

OKAY DOKEY

A place for everyone!

B.B.Q. TAKE-OUT

(Catering Packages)

2-FERS EVERYDAY

3PM-7PM
"FREE" BAR BUFFET

MEXICAN MADNESS & KARAOKE

SUNDAY BRUNCH BUFFET

LUNCH ■ DINNER ■ LATE NIGHT

PATCHOGUE

499-59 Sunrise Highway

654-0700 ■ Fax: 654-1066

HAUPPAUGE

Corner Rt. 111 & 347

265-5102 ■ Fax: 265-5422

(516) 475-1790-1791
Fax (516) 475-1807

Emergency Boarding
Service
Call 289-1524

PATCHOGUE PLATE GLASS CO. INC.

GLASS—MIRRORS—PLEXIGLASS—STORE FRONTS
AUTO GLASS—INSURANCE CLAIMS

RON HENTHORNE
Manager

7 Railroad Ave.
Patchogue, NY 11772

Swan Bakery

"Serving the Community Since 1946"
Celebrating our Third Anniversary
under new ownership

Official Baker to the Gateway Playhouse
Guy J. Gagliano · Robert E. Roode

15 South Country Road
East Patchogue, N.Y. 11772

Tel. (516) 475-9626

Gude
photography

8 W. Main St.
Patchogue NY
654-8093

Susann Gude

Portrait
Artist

Playhouse Plumbing Done By
Beach Plumbing & Heating, Inc.

Phone 281-4396 · John Vilano
Alterations Repairs New Work



SEARLES GRAPHICS INC.

*Full Service Commercial Printing
and Design Studio*

1457 Montauk Highway
P.O. Box 2099

East Patchogue, NY 11772

Tel: (516) 286-2943 Fax: (516) 286-3281

DO YOU RECEIVE OUR FREE BROCHURE EACH YEAR?

If not, fill out this form and leave it in the box office.

(Please Print)

Name _____

Address _____

Zip _____

BOX OFFICE HOURS

Tuesday thru Saturday 12:30 - 10:00 p.m.

Sunday 12:30 - 8:30 p.m. Monday 12:30 - 5:00 p.m.



CREDIT CARD ORDERS 286-1133 (Based on ticket availability)

Mailing Address: Box 5, Bellport, New York 11713