

It's Not A Small World,  
We Just Make It Seem That Way.



Over 3,900 flights a day.

Over 250 cities. Over 40 countries.

And over 90,000 people dedicated to bringing  
you the world in a way that's uniquely American.

Call your Travel Agent or American at

1-800-433-7300. Or visit us on the

web at [www.americanair.com](http://www.americanair.com)

**American Airlines**  
*American Eagle*

United States Europe Latin America Caribbean Canada Mexico Japan

American Airlines and American Eagle are registered trademarks of American Airlines, Inc.  
American Eagle is American's regional airline associate.

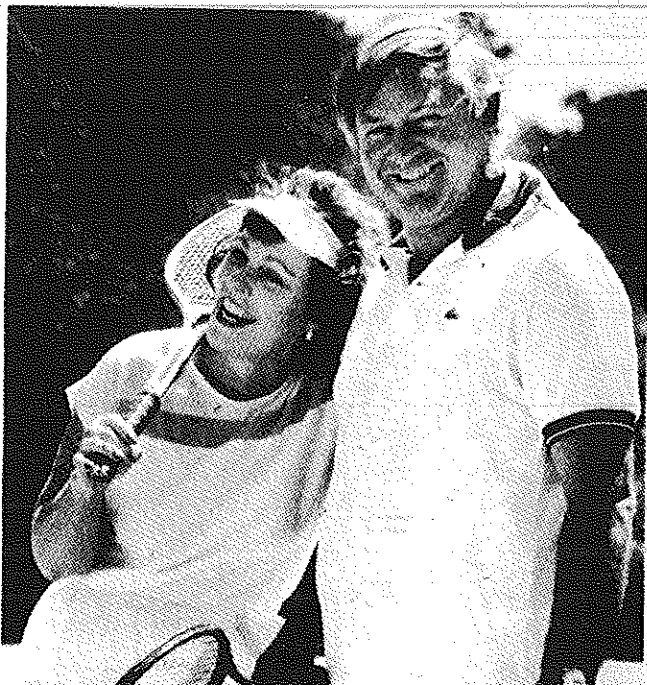
# GATEWAY PLAYHOUSE

PLAYBILL

1997

# BRIGADOON

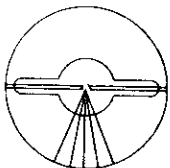
For peace of mind...  
Take the time



## MAMMOGRAPHY SAVES LIVES

Full Mammography accreditation by the American College of Radiology

**BROOKHAVEN RADIOLOGIC ASSOCIATES, P.C.**



HOSPITAL ROAD PROFESSIONAL CENTER  
250 Patchogue-Yaphank Road  
East Patchogue, New York 11772  
(516) 475-1030

WALTER P. QUIGLEY, M.D., D.A.B.R.  
RONALD S. HAMES, M.D., D.A.B.R.  
SETH O. MANKES, M.D., D.A.B.R.  
STEVEN EPSTEIN, M.D., D.A.B.R.  
DANIEL F. SETTLE, M.D., D.A.B.R.

MARK J. LODESPOTO, M.D., D.A.B.R.  
IRA J. LANGER, M.D., D.A.B.R.  
MARILYN LERNER, M.D., D.A.B.R.  
JOHN S. McCORMICK, M.D., D.A.B.R.

# LONG ISLAND WORKS WITH WALK 97.5!



WALK'S NO REPEAT WORKDAY MEANS YOU WON'T  
HEAR THE SAME SONGS OVER AND OVER AGAIN.  
JUST A GREAT VARIETY ALL DAY LONG FOR EVERYONE  
AT WORK. TUNE YOUR OFFICE RADIO  
TO WALK 97.5 TODAY!

# WALK FM 97.5

# BRIER HOUSE BREWERY



*"Come try our microbrewed beer and sample our delicious menu"*

**67 West Main St., Patchogue, NY 11772**  
**(516) 447-BEER**

THE NEW

## Carman's River Inne

*Fine Country Dining*

**"Rated Top 10 Restaurant" - *Newsday* 96**

**"A Country Hideaway, the Bar and Restaurant Glows"**

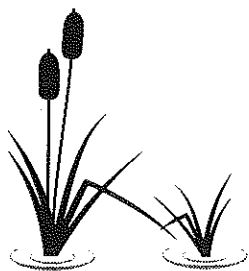
Natural Warmth and Charm  
Hearty Well-Presented Cuisine  
The Food - The People



Day Tripping to the Wineries?  
Perfect for Lunch or Dinner

Open 7 Days

450 Main Street, Yaphank, NY • (516) 345-3302  
Easy access from LIE: East-Exit 66, West-Exit 67  
Call for Reservations and Directions



ALLAN and ALLAN ARTS, LTD.  
in association with  
PAUL ALLAN and JOHN HODGE  
*presents*

JOHN SCHROEDER

LAURA KATE MARSHALL

DOUG TOMPOS

*in*

LERNER & LOEWE'S

# BRIGADOON

*with*

ERIN BELLARD

TIMOTHY C. JOHNSON

CLETE LARKEY

PATRICK SHEILS

GEDDETH SMITH

JULIE MEGAN SMITH

*and*

WHITNEY WEBSTER

Book and Lyrics by ALAN JAY LERNER    Music by FREDERICK LOEWE  
Original dances created by Agnes DeMille

Associate Producer  
**JEFF BELLANTE**

General Manager  
**GALE EDWARDS**

Set Designer  
**MICHAEL BOYER**

Lighting Designer  
**CHRISTOPHER J. LANDY**

Sound Designer  
**MARK CLARK**

Casting Director  
**ROBIN JOY ALLAN**

Production Stage Manager  
**GAIL EVE MALATESTA**

Company Manager  
**TIMOTHY WILKINS**

Choreographed by  
**SHARON HALLEY**

Musical Director  
**WILLIAM A. REILLY**

Directed by  
**DAVID ARMSTRONG**

BRIGADOON is presented through special arrangement with  
TAMS-WITMARK MUSIC LIBRARY, INC.  
560 Lexington Avenue, New York, NY 10022

# Bellport Country Club

ONE GREAT PERFORMANCE DESERVES ANOTHER

## Fairway's Cafe

Upstairs at the Bellport Country Club (Elevator Available)

Serving Lunch and Dinner Tues-Sun, 11:30 to Closing

Specializing in Succulent Steaks and Chops

RESERVATIONS  
ENSURE WE'LL  
GET YOU TO THE  
SHOW ON TIME!

**Spectacular**  
Sunday Brunch  
**BUFFET**  
**\$14<sup>95</sup>** Served  
11:30am - 3pm  
Sunset Dinners Served  
4 pm till Closing

**COMPLETE**  
"EARLY BIRD"  
**SUNSET DINNER**  
**\$13<sup>95</sup>** From  
Wed.-Sat: 4pm till 6pm  
Sun. 4pm till Closing

**Wednesday**  
**Prime Rib Night**  
Complete Dinner  
**\$15<sup>95</sup>**  
Served 4pm till Closing

**Thu., Fri., Sat.**  
7:30pm till Closing  
**Lobsters**  
(Steamed or Broiled)  
Com on the Cob, Crabcake, Coleslaw  
**\$16<sup>95</sup>**

Just 2 minutes West of Gateway



Veranda Dining • Gift Certificates Available • Reservations  
South Country Road • Bellport Village • (516) 286-4227

Tremendous selection of fine jewelry,  
period jewelry and collectibles.  
Savings on unredeemed merchandise.  
Written/Verbal and Estate Appraisals by appointment

*W<sup>m.</sup> J. O'Neill*

Serving Manhattan to Montauk  
Jewelers and  
Collateral Loanbrokers

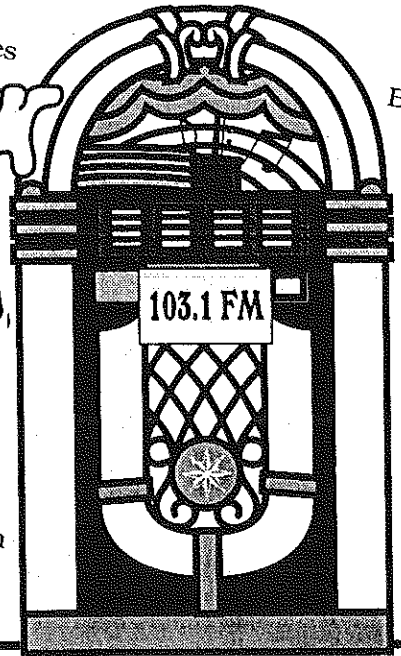
One East Main Street,  
Patchogue  
289-9899

Sean and Veronica Cantwell, Kathryn Cantwell

# Now THIS is an **OLDIES** station!



Elvis Presley  
Credence  
Clearwater Revival  
The Supremes  
The Beatles  
The Rascals  
The Doors  
Beach Boys  
Aretha Franklin  
Elton John  
The Rolling Stones



# B-103

Long Island's Oldies

For the best  
& most oldies!  
**103.1 FM**

# Bellport CHOWDER HOUSE



*An Eating and Drinking Tradition*

**FULL MENU**

**FULL BAR**

Open Daily For Lunch and Dinner  
Seven Days A Week

**CHAMPAGNE BRUNCH SUNDAY NOON TILL 3 P.M.**

Sunday - Thursday till 11:00 p.m. Friday & Saturday till Midnight

**SPECIALIZING IN FRESH LOCAL SEAFOOD  
AT AFFORDABLE PRICES**

*Before and After the Show You'll Want to Meet and Eat At  
THE CHOWDER HOUSE*

**TAKEOUT**

**CATERING**

19 Bellport Lane • Bellport Village • 286-2343

## THE CAST

(in order of appearance)

Tommy Albright .....	JOHN SCHROEDER*
Jeff Douglas .....	DOUG TOMPOS*
Angus MacGuffie .....	DANIEL STANTON
Sandy Dean .....	ERIC OLSON*
Archie Beaton .....	ROBERT LINDER*
Harry Beaton .....	CLETE LARKEY*
Maggie Anderson .....	ERIN BELLARD
Meg Brockie .....	WHITNEY WEBSTER*
Andrew MacLaren .....	PATRICK SHEILS
Fiona MacLaren .....	LAURA KATE MARSHALL
Jean MacLaren .....	JULIE MEGAN SMITH
Charlie Dalrymple .....	TIMOTHY C. JOHNSON*
Mr. Lundie .....	GEDDETH SMITH*
Sword Dancers .....	CRAIG LEE, JAY RALSTON
Frank .....	ERIC OLSON*
Jane Ashton .....	MITZIE DARLEEN
Townfolk of Brigadoon .....	ERIN BELLARD, MITZIE DARLEEN, SANDRA HARTMAN, STAS KMIEC*, CRAIG LEE, CASSANDRA McCONNELL, ERIC OLSON*, JAY RALSON, TARA SOBECK*, DANIEL STANTON, LAURA VOSS

## UNDERSTUDIES

Tommy Albright .....	ERIC OLSON*
Jeff Douglas .....	DANIEL STANTON
Harry Beaton .....	STAS KMIEC*
Maggie Anderson .....	TARA SOBECK*
Meg Brockie .....	SANDRA HARTMAN
Fiona MacLaren .....	CASSANDRA McCONNELL
Jean MacLaren .....	TARA SOBECK*
Charlie Dalrymple .....	DANIEL STANTON
Jane Ashton .....	SANDRA HARTMAN

## BRIGADOON ORCHESTRA

William A. Reilly .....	Conductor
Sheri Mulé .....	Flute/Piccolo
Todd Brunel .....	Clarinet/Bass Clarinet
Jackie Leclair .....	Oboe
Dan Yeager .....	Trumpet
Kenichi Ninomiya .....	Trombone
Marni Harris .....	Violin
Laurence Goldman .....	Bass
Jonathan Mele .....	Drums/Percussion
Joe Bartolozzi .....	Synthesizer



\* Actors employed in this production are members of Actors' Equity Association, the union of Professional Actors and Stage Managers in the United States.

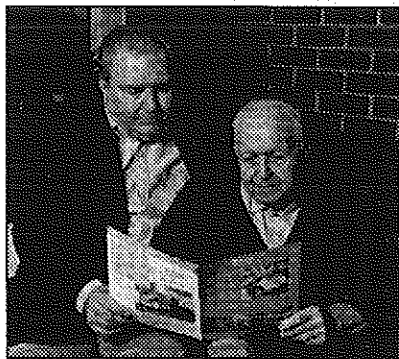


Director and Choreographer employed in this production are members of The Society of Stage Directors and Choreographers, Inc.

The Musicians employed in this production are members of the American Federation of Musicians.



# Looking to Get Away?



We provide temporary care for your loved one while providing you with peace of mind, as you take a well-deserved rest from care-giving.

## Brookhaven Health Care Facility

801 Gazzola Drive  
East Patchogue, NY 11772  
447-8800

## Smithtown Health Care Facility

391 North Country Road  
Smithtown, NY 11787  
361-2020

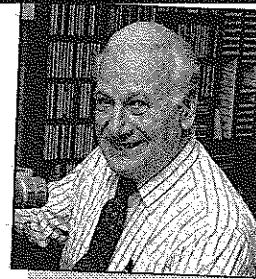
"I was able to enjoy my time away, knowing that Dad was being well-taken care of."

Steve Panoras

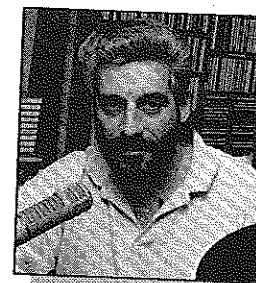
**THE MCGUIRE GROUP**  
HEALTH CARE FACILITIES



Rich Keith, 5:30-10:00 a.m.



Jack Ellsworth,  
"Memories in Melody"  
10:00 a.m. - Noon



Bob Stern, Noon - 3:00 p.m.  
1-2 BDWY: Hollywood Show



Gil Ellis, 3:00 - 7:00 p.m.

Join Your **wlim** <sup>STEREO</sup>  
Family

Monday - Friday

- Big Bands
- Popular Standards
- Local & Community News
- Daily Prizes

**GLENN MILLER**

**FRANK SINATRA**

**ROSEMARY CLOONEY**

**BARBRA STREISAND**

**NAT KING COLE**

**DORIS DAY**

**BENNY GOODMAN**

**TONY BENNETT**

**BING CROSBY**

**wlim** 1580 AM • Long Island Music



See The Show  
And Stay The Night



Also Serving Breakfast

160 South Country Road  
Bellport, NY 11713  
(516) 286-8588

## Old Inlet Inn



### The Fine Dining Experience

Dinners from 5:00 p.m.  
Sunday Brunch 12 - 3:00 p.m.  
Sunday Dinner 3 - 9:00 p.m.  
Closed Mondays

Old Fashioned  
Nor' Eastern Lobster Bake  
every Wednesday \$32.00/person

Show Tune Sing-A-Longs on  
Fri. & Sat. with Jim Ahrend  
at the piano 9-1:00 AM

Patio Dining *Season Ticket Holders  
10% Discount*

108 So. Country Road  
Bellport 286-2650

# Harbor Side Restaurant



*"Incomparable Seafood Restaurant"*

Complete Lunches from \$7.95

Complete Early Bird Menu

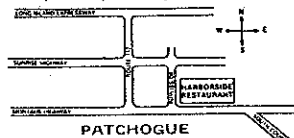
Mon. - Fri. 3:30 p.m. - 5:45 p.m.

Starting at \$11.95

Appetizers from \$4.50

Dinners from \$14.95

Located on the corner of East Main St.  
(Rt. 27A) and Phyllis Drive



PATCHOGUE

### House Specials

24oz. Marinated Porterhouse Steak  
Cajun Blackened Swordfish (Louisiana Style)  
24oz. Boneless Rib Eye Steak (marinated)  
Whole Stuffed Lobster with Crab Meat  
Includes: Salad, Potato & Vegetable

Open 7 Days a Week  
at 11:30 a.m.

Highly Recommended:

\*\*\* *Newsday, Daily News*  
*NY Post & The Practical Gourmet*

503 E. Main Street  
Patchogue, New York  
**(516) 654-9290**

Special Rates for  
Theatre Groups from 20 to 125  
Call for more information.



## ROYAL OAK

Diner - Restaurant

Station Road and Sunrise Highway - Bellport, New York 11713

HOURS: 6:00 A.M. - 2:00 A.M. SEVEN DAYS A WEEK

TEL. (516) 286-5757

# BRIGADOON

The Scottish Highlands  
Time: The Present

ACT I

"Prologue" .....Ensemble  
"Brigadoon" .....Ensemble  
"Down on MacConnachy Square" .....Sandy, Meg and Townsfolk  
"Waitin' for My Dearie" .....Fiona and Women  
"I'll Go Home with Bonnie Jean" .....Charlie and Men  
"Heather on the Hill" .....Tommy and Fiona  
"The Love of My Life" .....Meg  
"Jeannie's Packin' Up" .....Women  
"Come to Me, Bend to Me" .....Charlie, Jean, Mr. MacLaren and Women  
"Almost Like Being in Love" .....Fiona and Tommy  
"Wedding Dance" .....Charlie, Jean and Townsfolk  
"Sword Dance and Reel" .....Harry and Sword Dancers  
Finale Act I

ACT II

The Chase .....Harry, Tommy, Jeff and Men  
"There But for you Go I" .....Tommy  
"My Mother's Weddin' Day" .....Meg and Townsfolk  
"From This Day On" .....Fiona and Tommy  
"Finale" .....Ensemble

**ACT III**  
TAKES PLACE AT



*Patchogue Floral's Fantasyland*



COME  
BROWSE

LARGEST EMPORIUM CATERING TO  
THE ESTHETIC PROCUROR OF UNUSUAL HOME DECOR —

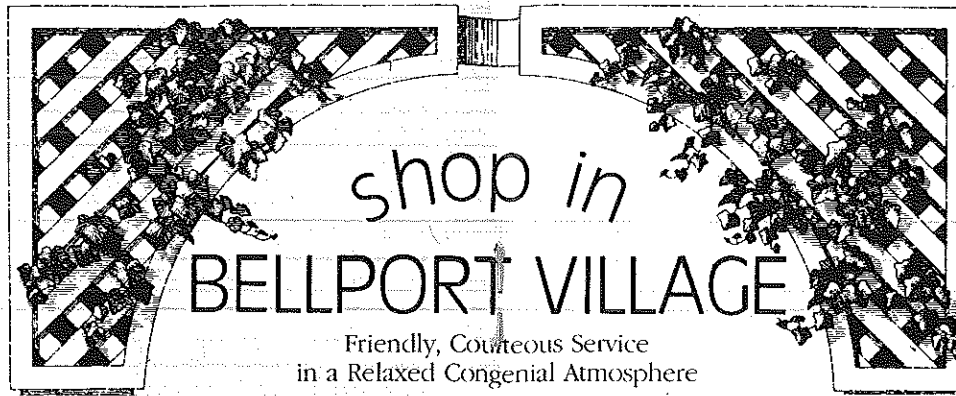
Giftware - Art Crafts - Custom Permanent Arrangements

10 Robinson Avenue • East Patchogue • 475-2059

## Volunteers Wanted

Gateway Playhouse is seeking  
volunteer ushers to join its  
Volunteer Corps

Call 286-0555 for  
more information



shop in  
**BELLPORT VILLAGE**

Friendly, Courteous Service  
in a Relaxed Congenial Atmosphere



AFTER THE SHOW STOP BY  
**AUNT EMMIE'S**  
FOR SOME

Granita Sugar Free Ice Cream

- Homemade Ice Cream•Old Fashioned Candies
- Corona Italian Ices•All Natural Frozen Yogurt
- Italian Cookies•Cappuccino
- Gourmet Coffee and much more.

**OUTSIDE TABLES** Just turn left at the light  
8 Bellport Lane . Bellport, New York 11713 . (516) 286-2762



"We're Patient People"

## AMATO FAMILY CHIROPRACTIC

16-2 STATION ROAD  
BELLPORT, NY 11713

516-286-2300

Infant, Child & Adult Care

Dr. Frank J. Amato

FAX 516-286-6080 516-286-0510  
Sentry Hardware  
**BELLPORT HARDWARE**  
Pittsburgh Paints • Hardware • Tools & Accessories  
Complete Line of Stainless Steel & Grade 8 Nuts & Bolts  
Screens & Window Repair  
9 Bellport Lane • Bellport, NY 11713

Tel: 286-0395

## LYONS FUEL OIL CO., INC.

23 Station Road, Bellport, N.Y.

## IGA WALLEN'S MARKET

Choice Meats & Poultry • Fresh Produce & Dairy  
Quality Service in a Friendly Neighborhood Market  
Main Street, Bellport NY 286-0202

## BELLPORT PAINT & WALLPAPER, INC.

COMPLETE PAINT & WALLPAPER SUNDRIES



CABOT STAINS  
OLYMPIC PAINT & STAINS  
145 South Country Rd.  
Bellport, NY 11713

516-286-5850

Paintings, Sculpture, Prints and Photography

## Bellport Lane Art Gallery

7 Bellport Lane  
Bellport, New York  
(516) 286-4283

Representing Long Island Artists



# Porto Bello

## RISTORANTE

FINE ITALIAN CUISINE

PIZZA  
PASTA  
PASTRY

Capture  
the  
Moment

Located at:  
14 STATION RD. • BELLPORT, LI

for reservations or take out, call:

286-3300 • 286-3340

HOURS:  
Mon-Thurs 11am-11pm  
Fri, Sat 11am-1am  
Sun 11am-11pm

## THE BANK OF NEW YORK

LONG ISLAND REGION

24-hour ATM

BELLPORT BANKING  
OFFICE LOCATED AT:

32 Station Road  
Bellport, New York 11713  
Virginia Asero  
Assistant Vice President  
(516) 286-4200

Member FDIC 1986 The Bank of New York

## Bellport Delicatessen

Catering is our Specialty

124 Main Street, Bellport  
(516) 286-0444 • FAX 286-6666

Open 5:30 a.m. - 10:00 p.m. 7 Days a Week  
Open for Breakfast and Lunch Specials

Homemade Muffins • Gourmet Coffees



# Coming to Gateway

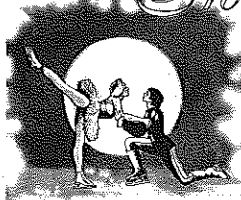
July 16 - August 9 A Musical Of Sheer Joy and Happiness



Back by popular demand, one of our most requested Musicals, and no wonder! Winning a Tony Award for Best Musical, it has humor, music, dance, charm, wit, and joy of life that will take your heart away. Critics called it a "Show of sheer happiness," another wrote "ME AND MY GIRL is bright, colorful, boisterous, giddy, without a doubt the perfect entertainment." The music and dance numbers will lift you out of your seats and you'll be doing the Lambeth Walk long after you leave the theater. With comedy low and broad as burlesque and music as high and bright as the stars, ME AND MY GIRL sparkles.

August 13 - August 31 A Once In A Lifetime Special Event

## Swan Lake on ice



Featuring the Russian Stars of the St. Petersburg State Ice Ballet, the magic on ice continues. Classical dance and ballet combined with the sport of figure skating has proved to be an instant success. Now 35 of Russia's most celebrated skaters return from an international tour to give us their new production of SWAN LAKE ON ICE (yes, real ice.) SWAN LAKE ON ICE is adapted from the fabled ballet of two star crossed lovers who are destined to live and love for eternity. With beautiful scenery, special lighting effects and the music of Tchaikovsky we marvel at the grace and

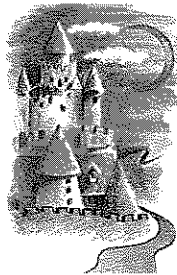
flowing movement over the mirror-like surface of the ice. With hundreds of elegant costumes complementing delightful and talented medal winners — it's an eye catching spectacular.

### SPECIAL RETURN ENGAGEMENT!

## Sleeping Beauty on ice

September 2 - September 13

The Ice Show  
You Asked For



Popular demand brings the Russian stars of the St. Petersburg State Ice Ballet Company back to our stage with their lyrically beautiful SLEEPING BEAUTY ON ICE. With stunning costumes and breath-taking skating, this sumptuous production once again features Russia's most celebrated skaters performing to the classic Tchaikovsky score. If you missed it last winter, here is your chance to see it! These outstanding performances were sold out every night last year, and were greeted by standing ovations from audiences of all ages.

It's a Special Treat for the younger members of the family, but you'll enjoy the exciting ice ballet experience even more.

September 17 - October 12

A Magical Musical of  
A Timeless Adventure

Joseph, the first big hit from Andrew Lloyd Webber, creator of Phantom Of The Opera, Cats, and Evita. Joseph was given a coat of many colors by his father Jacob that was red and yellow and green and brown... Sold as a slave by his envious brothers, Joseph eventually rises to power. Watch the story unfold in all its multiple colors with camels and harem girls and dreams and listen to the magical score. It's a fun-filled tale of rags to riches with lifetime lessons for young and old alike.



### WHO'S WHO (in alphabetical order)

**ERIN BELLARD** (*Maggie Anderson/Ensemble*) moved to NYC in the fall of '95 after graduating from the Performing Arts High School in Dallas, Tx. She was an acting major at Marymount Manhattan College for a semester and then left to tour as Hilary in DINOSAUR MOUNTAIN with American Family Theatre. Favorite roles: Fay/Lolita - THE BOYFRIEND, Topsy - THE KING AND I, Tribe/Dancer - HAIR. Erin is excited to be doing her first show with Gateway Playhouse.

**MITZIE DARLEEN** (*Jane Ashton/Ensemble*) Having recently moved to the New York area, Mitzie is excited to be making her East Coast debut at the Gateway Playhouse. Mitzie's professional credits include SPELLBOUND and AMERICAN SUPERSTARS in Reno, Nevada entertaining on board the Queen Elizabeth II and spending a year with the National Tour of WILL ROGERS FOLLIES. Miss Darleen has also received a B.A. in political science and competed as Miss Nevada in the 1993 Miss America Pageant.

**SANDRA HARTMAN** (*Ensemble*) received her training in Philadelphia at the University of the Arts. She was engaged several years at Theatre des Westens in West Berlin, Germany where she performed extensively in musical theater and operetta. Recent American credits include: Aldonza in MAN OF LA MANCHA - national tour, Blue Fairy in PINOCCHIO - Phila. Theatre Caravan and Marguerite in THE SCARLET PIMPERNEL - Hedgerow Theatre. Sandra performed last summer in Gateways production of THE SOUND OF MUSIC and is happy to return again this season.

**TIMOTHY C. JOHNSON** (*Charlie Dairymp*) In his debut with Gateway, Timothy hopes "the third time's a charm." Having played Charlie twice in the last year, he is pleased to play it once again. A native of Birmingham, AL, Timothy earned a bachelors of music at The University of Montevallo, followed by a masters at The Boston Conservatory. Since that time he has enjoyed a blossoming career that has lead him across the country. Credits include: Disney's 101 DALMATIANS, premiere at Radio City, Huck in BIG RIVER, Cinderella's Prince in INTO THE WOODS, Man in MARRY ME A LITTLE, Freddy in MY FAIR LADY, and Young Steve in HEARTBEATS.

**STAS KMIEC** (*Ensemble/Dance Captain*) has danced professionally with THE BOSTON BALLET and THE METROPOLITAN OPERA BALLET, toured worldwide with ballet superstar Rudolf Nureyev, and performed on Broadway in Nureyev's DON QUIXOTE and with THE AMERICAN DANCEMACHINE. Mr. Kmieć has created

dances for musicals, plays, opera, ballet, film and Off-Broadway and choreographed the Irish premiere of the Broadway musical THE BEST LITTLE WHOREHOUSE IN TEXAS. He is the founder/director of THE LUBLIN POLISH SONG and DANCE ENSEMBLE in Haverhill-Boston. Stas can be seen in the film QUIZ SHOW directed by Robert Redford and Woody Allen's television film, DON'T DRINK THE WATER. A graduate of Tufts University and Studium Folklorystyczne - UMCS in Lublin, Poland, he recently completed the 30th Anniversary Broadway Revival tour of FIDDLER ON THE ROOF, starring Theodore Bikel.

**CLETE LARKEY** (*Harry Beaton*) is pleased to be returning to the Gateway/Candlewood circuit having appeared in the Gateway Playhouse/national touring production of SONG AND DANCE in 1991. Other credits include regional productions of HELLO DOLLY (Ambrose Kemper), KISS ME KATE (Gremio), GUYS AND DOLLS, WEST SIDE STORY, FIDDLER, and national tours of THE MUSIC MAN, and THE TEENAGE MUTANT NINJA TURTLES. More recently, Clete has been seen on SATURDAY NIGHT LIVE, LATE SHOW WITH DAVID LETTERMAN and AS THE WORLD TURNS, as well as in the films, FIRST WIVES CLUB, and I SHOT ANDY WARHOL. Clete has also assisted Mr. Armstrong on productions of BEEHIVE, NUNSENSE, HOT-N-COLE, and ROMANCE, ROMANCE.

**CRAIG LEE** (*Sword Dancer/Ensemble*) a native Long Islander is joining the cast of BRIGADOON after performing The Who's TOMMY on tour. Some of his favorite credits include: The RADIO CITY CHRISTMAS SPECTACULAR, the European tour of CABARET, the National tour of CAMELOT, and Regional productions of PAJAMA GAME, SWEET CHARITY and HELLO DOLLY. Craig has also performed at TOKYO DISNEYLAND and for the OHIO BALLET.

**ROBERT LINDER** (*Archie Beaton*) Recent musical theater credits include Tony Esposito in THE MOST HAPPY FELLA at Theatre Barn, Mr. Luntie in BRIGADOON for Rockwell Productions and Gunther in the TESTIMONY OF SELMA GOLDBERG at the Miranda Theatre. In July he moves on to Virginia to do Van Buren in DAMN YANKEES at Mill Mountain Theatre. This fall Robert returns to sing with the ensemble at the Metropolitan Opera for his tenth consecutive season, appearing in BORIS GUDONOV, LOHENGGRIN, MEISTERSINGER, and PETER GRIMES.

**LAURA KATE MARSHALL** (*Fiona MacLaren*) is delighted to be spending her summer in BRIGADOON at the Gateway/Candlewood Playhouse. Her favorite

## CABOT'S FLORIST

- WEDDINGS
- FUNERALS
- HOUSE PLANTS
- HOSPITAL ARRANGEMENTS

- FRUIT BASKETS
- STUFFED ANIMALS
- BALLOON BOUQUETS
- DRIED & SILK ARRANGEMENTS

Business  
accounts  
welcome

DAILY DELIVERIES

475-0408

91 Medford Ave., Patchogue  
(Rt. 112) South of Sunrise Hwy.  
Minutes from Brookhaven Hospital  
Next to Robertaccio Funeral Home

Order by Phone  
We Accept Major Credit Cards

## WHO'S WHO (continued)

successes include: Christine in PHANTOM OF THE OPERA, Susanna in THE MARRIAGE OF FIGARO with the New York Broadway Opera, Frasquita in CARMEN with Henry Street Settlement, Gretel in Dicapo Opera Theatres' HANSEL AND GRETEL, and AGNES OF GOD at N.Y.C.A.S. In addition, Laura continues to pursue her growing talent in the Healing Arts. Her thanks to the audience for continuing to support live theatre.

**CASSANDRA McCONNELL** (Ensemble) Cassie was recently seen in THE DESERT SONG (Rockwell Productions) and as Marian in THE MUSIC MAN (Bigfork Summer Playhouse). She holds a Bachelor of Music degree from Indiana University's School of Music where she studied with Vera Scammon. There she was featured as Giulietta in THE TALES OF HOFFMANN, Bessie in MAHAGONNY SONGSPIEL, and the Announcer in GALLANTRY. She was also a member of the Utah Festival Opera Company where she played Kote Pinkerton in MADAME BUTTERFLY and understudied the title role in FANNY. Other roles she has enjoyed are Anna in THE KING AND I, Madame Gazaza in SUGAR BABIES, and the title role in CINDERELLA. After BRIGADOON, Cassie will play Julie Jordan in the 1997-98 National Tour of CAROUSEL with the Toika Group.

**ERIC OLSON** (Sandy Dean/Frank/Ensemble) was last seen as Peter in RTG Productions' JESUS CHRIST

SUPERSTAR. His Off-Broadway credits include THE GREAT BRAIN, THE LITTLE PRINCE, and ODYSSEUS, a new rock opera presented at Carnegie Hall. Regional credits include Che in EVITA, Billy in CAROUSEL, Charlie in BRIGADOON, Kolman in THE ROTHSCILDS, and the Trinity Repertory Company's acclaimed A CHRISTMAS CAROL.

**JAY RALSTON** (Sword Dancer/Ensemble) joins the cast at Gateway Playhouse after a recent production of WEST SIDE STORY. Other regional credits include PHANTOM, JOSEPH, MY FAIR LADY, HELLO DOLLY, SECRET GARDEN, and the European Tour of American Festival Ballet. Jay would also like to thank his family for all their love and support.

**JOHN SCHROEDER** (Tommy Albright) is happy to be making his Gateway debut with BRIGADOON. He recently completed a run of three and a half years as Raoul in the National Tour of Andrew Lloyd Webber's THE PHANTOM OF THE OPERA. John's regional credits include Billy Crocker in ANYTHING GOES, the title role in CANDIDE, Adam/Isaac in THE MYSTERY CYCLE (Court Theatre--Chicago), John Truitt in MEET ME IN ST. LOUIS and Tony in WEST SIDE STORY. John attended Eastman School of Music and holds a BFA in Music Theatre from Illinois Wesleyan University. He grew up in Milwaukee, Wisconsin.

# ACTING AND MUSICAL THEATRE TRAINING

storytelling & theatre games classes for 5-8 year-olds

all levels of acting for all ages thru adult

television auditioning and musical comedy classes



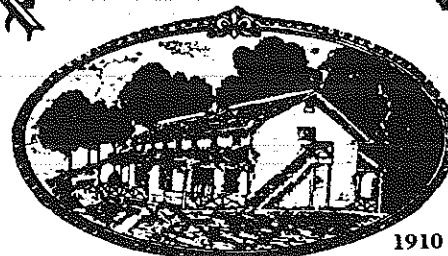
## GATEWAY ACTING SCHOOL

now enrolling! 286-9014

LEARN FROM THE PROFESSIONALS!

## Wine Grove Inn

On The Swan River Inn



Open Weekdays

11:30 A.M.

Saturday

11:30 A.M.

Sunday

12:00 P.M.

Daily  
Blackboard  
Specials!

1910

### EARLY BIRD SPECIALS

Monday thru Saturday, 3:30 p.m. to  
6 p.m., Sunday 12 p.m. to 5 p.m.

### LUNCH

Monday thru Saturday,  
11:30 a.m. to 3 p.m.

### SUNDAY DINNER SPECIALS

12 p.m. to 9 p.m.

Chapel Ave. & First Street • East Patchogue, NY

475-9843

OPEN WEEKDAYS 11:30 AM • CLOSED TUES. • SAT. 11:30 AM • SUNDAY 12 PM

Directions: LIE to Exit 64, Route 112 South to Montauk Hwy. (27A). Make a left (East) on Montauk Highway to fork in road: Take right side of fork then immediate right onto Chapel Ave.

**PATRICK SHEILS** (Andrew MacLaren) is happy to be making his second appearance at Gateway/Candlewood. After playing Admiral Von Schrieber in last year's production of THE SOUND OF MUSIC and Franz in the national tour. At the Mac-Haydn Theatre, Patrick played Warbucks in ANNIE WARBUCKS, Hancock in 1776 and Lt. Shcank in WEST SIDE STORY. He played Clarence in Richard III at the Arizona State Music Theatre and performed the dual role of King Duncan/Seward with the New Perspectives Theatre Co. in NYC. Other favorite roles include, Paul Bertholet in CARNIVAL, and Tom in THE GLASS MENAGERIE. A former Long Islander (graduated from North Shore High School) Patrick now lives in the Hudson Valley Region of Upstate, N.Y.

**GEDDETH SMITH** (Mr. Lundie) appeared on Broadway in THE IMAGINARY INVALID, TONIGHT AT 8:30, A TOUCH OF THE POET, and Eva LeGallienne's production of ALICE IN WONDERLAND, in which he played, among other roles, the Cheshire Cat. He has also appeared at Hartford Stage Company, Barter Theatre, Philadelphia Drama Guild, New Jersey Shakespeare Festival, Walnut Street Theatre, Virginia Museum Theatre, et. al., in a wide variety of parts, fifty of them in Shakespeare's plays. Recently he played the Author and Buks in Athol Fugard's VALLEY SONG at the Portland Stage Company. His featured appearances on television include MAN WITHOUT A COUNTRY (ABC) MILLIGAN (CBS), BLUE HOTEL (PBS), ALL MY CHILDREN (ABC) and LOVING (ABC). He has taught at the American Musical and Dramatic Academy, Drama Tree, and Actors and Directors Lab; and he is the author of two biographies of 19th-century American actors: THE BRIEF CAREER OF

ELIZA POE and THOMAS ABTHORPE COOPER, AMERICA'S PREMIER TRAGEDIAN.

**JULIE MEGAN SMITH** (Jean MacLaren) A native LI'er, Julie received a B.F.A. from Marymount Manhattan College, and studied dance at the Martha Graham School. She was a member of Coyote Dancers dance Co., in NYC, for two seasons, and has been in Off-Broadway productions. National Tours include GIGI and CAN CAN, in which she played (the Gwen Verdon role), Claudine. Last seen in OKLAHOMA at the Palace Theatre. Myrtle Beach, she is delighted to be performing back home, on the island.

**TARA SOBECK** (Ensemble) has recently returned from Jupiter, Florida where she played the role of Jean in BRIGADOON. Nationally she toured with the revival of BYE BYE BIRDIE starring Tommy Tune and Ann Reinking. Overseas she toured Europe as Anybodys in WEST SIDE STORY, and as a Kit Kat Girl in a German production of CABARET. Other favorite roles include Anne in LA CAGE AUX FOLLES, and Chrissy in HAIR. In addition to dancing on GUIDING LIGHT and AS THE WORLD TURNS, Tara recently filmed a scene for THE HORSE WHISPERER starring and directed by Robert Redford.

**DANIEL STANTON** (Angus MacGuffie/Ensemble) "It is a bonnie thrill for this laddie to be makin' his Gateway debut in Brigadoon." Daniel has been seen across the U.S., Canada, and South America in the national tours of WEST SIDE STORY as Baby John, in MAN OF LA MANCHA as Jose, and the mule, and in all his glory in the European tour of HAIR! as Margaret Mead and "naked boy", directed by

## WHO'S WHO (continued)

James Rado. Strategically, Daniel calculatingly killed them in Chicago as Mr. Green in *CLUE: The Musical!* He has also been seen across this great land of ours as Huck in *BIG RIVER* (4 times, whew!) Will Parker in *OKLAHOMA*, Gerald Bolingbroke in *ME AND MY GIRL*, Eddie in *DO BLACK PATENT LEATHER SHOES REALLY REFLECT UP?* and as the nasty Rev. David in *THE FOREIGNER*. Daniel would like to thank his friends and family for all their love and support, "...Here's lookin' up your kilt!"

**DOUG TOMPOS** (*Jeff Douglas*) began his career in New York, appearing in *CITY OF ANGELS* (Original Broadway Cast); *FOREVER PLAID*; *JEFFREY*, understudying and playing the title role in both New York and Los Angeles; and *DAN QUAYLE: IN HIS OWN WORDS*, a political satire he wrote and performed to benefit E.F.A./Broadway Cares. He has worked in regional theatres across the country and most recently appeared in *ANGELS IN AMERICA* (Parts I and II) at A.C.T. in San Francisco; *END OF THE WORLD PARTY* in Los Angeles, for which he received an L.A. Drama - Logue Critics Award; and *DRACULA* at the Grove Theatre Center. His television appearances include roles on *FRASIER*, *HIGH INCIDENT*, *BABYLON 5*, and in the recent NBC film *THE SLEEPWALKER KILLING*.

**WHITNEY WEBSTER** (*Meg Brockie*) is happy to be returning to Gateway/Candlewood Playhouse after joining the cast of *CRAZY FOR YOU* as Polly Baker in 1996's summer season. New York audiences may have seen her as Sally Anderson in *A CHRISTMAS*

*CAROL* at Madison Square Garden, or in a Benefit Concert of Stephen Sondheim's *ANYONE CAN WHISTLE* at Carnegie Hall. She has toured North America as Kim Ravenal in *SHOWBOAT* and as Young Jenny in *ASPECTS OF LOVE*. Her favorite regional credits include Fanny Brice in *FUNNY GIRL*, Maggie in *A CHORUS LINE*, and Kander and Ebb's *THE WORLD GOES ROUND*. She dedicates this and every performance to her Parents and Myles for their love, support and boundless sense of humor.

**LAURA VOSS** (*Ensemble*) A short time after competing in the Miss America Pageant as Miss Wisconsin, Laura Voss relocated to New York. She has recently appeared in regional productions of *CAMELOT*, *ANNIE GET YOUR GUN*, and *FORGOTTEN BROADWAY*. *BRIGADOON* marks Laura's Gateway debut. She holds a Bachelor of Music Degree in Vocal Performance from the University of Wisconsin at Madison.

**PAUL ALLAN and JOHN HODGE** (*Producers*) have been theatrical partners since 1982. Between them, they have over 30 years of experience, ranging from Broadway and Off-Broadway to Regional Theatre and the last 15 years of Gateway productions. Paul and John worked on the NYC productions of *GROUCHO*, *DIAMONDS, JUST SO*, and *PACIFIC OVERTURES*. They have produced National and International tours of *SHENANDOAH*, *SWEET CHARITY*, *ANYTHING GOES*, *SONG AND DANCE*, *CAMELOT*, *A CHORUS LINE*, *SOUTH PACIFIC*, *42nd STREET*, and *OLIVER* and had the distinguished honor of bringing the first American-produced musical to Singapore with their touring production of *THE SOUND OF MUSIC* in 1990. For the last three years, they have also been operating Gateway's Candlewood Playhouse in New Fairfield, Connecticut. Upcoming projects include the national tour of *ME AND MY GIRL* in the fall.

**DAVID ARMSTRONG** (*Director*) Mr. Armstrong's New York directing credits include the Off-Broadway musicals, *TALLULAH* (starring Helen Gallagher), and *THE WONDER YEARS*, which Mr. Armstrong also co-authored. He also directed the long-running Los Angeles production of that musical which received seven *Drama-Logue* Awards including Best Musical and Best Director. Most recently, Mr. Armstrong directed Theodore Bikel, Bruce Adler, and Judy Kaye in the new musical *GREETINGS FROM SHOLOM ALEICHEM* on tour in Florida. Other recent endeavors include *THIS FUNNY WORLD* at the Kennedy Center and the Paper Mill Playhouse's acclaimed productions of *BRIGADOON* and *THE SECRET GARDEN*. His work has been seen at many leading regional theaters including the Cincinnati Playhouse-in-the-Park, the St. Louis Rep, Salt Lake's Pioneer Theatre Co., the Berkshire Theatre Festival, the Pittsburgh Civic Light Opera, Sacramento Music Circus, Ford's Theater, and the Cohoes Music Hall where he served four seasons as Artistic Director. He is the co-author of the new musical comedy *THE SECRET OF THE ANCIENT DIVAS*, and created the hip, new Cole Porter revue, *HOT N' COLE*, currently playing at the Actor's Theatre of Louisville. He is the artist formerly known as David Holdgrive.

**WILLIAM A. REILLY** (*Musical Director*) hails from L.A. and has toured with Gateway Productions of *SHENANDOAH*

and *CAMELOT*. With his writing partner Gary Lamb, Bill has written several musicals including Victor Hugo's *THE HUNCHBACK OF NOTRE DAME*. A recent production of *HUNCHBACK* received five *Drama-Logue* Awards including one to Bill for Musical Direction and was featured on TV's *A & E BIOGRAPHY OF QUASIMODO*. Bill most recently composed the music for the film *EATING WITH JUDE* which will be featured in L.A.'s Spotlight Film Festival. Bill is also notorious for sleeping through earthquakes.

**SHARON HALLEY** (*Choreographer*) Sharon is happy to be making her debut with *BRIGADOON* at Gateway Playhouse. At the New York City Opera, Ms. Halley has choreographed *THE MERRY WIDOW*, *THE NEW MOON*, *THE DESERT SONG*, staged and was the assistant director for Frank Corsaro on *DIE TODE STADT* and *DOCTOR FAUST*, in addition to choreographing *CINDERELLA* and *THE DREYFUS AFFAIR*. Her other New York credits include choreographing *ELIZABETH AND ESSEX*, starring Estelle Parsons, and the critically acclaimed revue *JERRY'S GIRLS* and its equally successful National Tour starring Carol Channing, Leslie Uggams, and Andrea McArdle. She was subsequently asked to choreograph *SHOW BOAT* and *THE NEW MOON* for PBS's "Great Performances," and *THE MERRY WIDOW* for "Live from Lincoln Center." She was Resident Choreographer for the St. Louis Municipal Opera where she choreographed over 20 different productions, starring among others Jim Dale, and Sharon's special favorites, Gene Kelly and Donald O'Connor. She has directed and/or choreographed at major theatres throughout the U.S. such as the Paper Mill Playhouse where she previously has choreographed *SWEENEY TODD*, *FANNY*, *THE MERRY WIDOW*, *NAUGHTY MARIETTA*, *ROBERT AND ELIZABETH*, *CAROUSEL*, *OKLAHOMA!*, *SHOW BOAT*, *PHANTOM*, and most recently, *GIGI*. Her unique skills prompted the Canadian Government to allow her to choreograph *MAN OF LA MANCHA* in Frederick, New Brunswick; a production which then toured the province. She also choreographed a production of *SHOW BOAT* for the Theatre Des Westins in Berlin, Germany. In addition to her work at Paper Mill and City Opera, Sharon is currently involved with the preparation of a workshop for a new musical, *DRACULA*, and a recent production of *110 IN THE SHADE* for the Bristol Riverside Theater. She lives in New York with husband Richard White and daughters Gretchen and Amanda.

**ROBIN JOY ALLAN** (*Casting Director*) spent her childhood performing at Gateway, and after directing, teaching and some producing, began casting in Manhattan in 1985. She worked with several Off-Broadway companies and then spent five years in Los Angeles, where she had the pleasure of working with Ron Howard, Rob Reiner and Jerry Zucker as the Associate Casting Director on the films *PARENTHOOD*, *WHEN HARRY MET SALLY*, and *GHOST*. She led the search for unknowns, discovering Bothazar Getty for the remake of *LORD OF THE FLIES*. She cast the television pilot of *PARENTHOOD* in 1989, giving Leonardo DiCaprio his first series-regular role. Ms. Allan now heads up the Gateway Acting School in Bellport and continues her freelance casting career.

**MICHAEL BOYER** (*Resident Set Designer*) has designed over 150 productions for Off-Broadway, summer stock, community theatre and university and amphitheater productions. Winters, Michael teaches the technical theatre courses at the Florida Keys Community College. This year he also designed a production of Neil Simon's *RUMORS* at the Tennessee Williams Fine Arts Center and *THE MYSTERY OF IRMA & WEP* at the Waterfront Playhouse. Mike would like to thank the crew for all their dedication and effort.

**GAIL EVE MALATESTA** (*Production Stage Manager*) Gail is pleased to return to Long Island, her Gateway credits include *THE MUSIC MAN*, *SECRET GARDEN* and *THE KING AND I*. Gail's other recent credits include *RICHARD III* and *THE MERRY WIVES OF WINDSOR* at The Orlando Shakespeare Festival and *CALAMITY JANE* at Downtown Cabaret Theatre. New York credits include: W.P.A. Theatre, American Jewish Theatre, Manhattan Class Co., Musical Theatre Works, Gertrude Stein Repertory, N.Y.U. and Two River Theatre Co. Regional credits include: Philadelphia Drama Guild, Music Theatre North, New London Barn, The Little Theatre On the Square, Huntington Theatre, Merrimack Repertory and Theatre-By-The-Sea. Gail holds a B.F.A. in stage management from Boston University.

**CHRISTOPHER J. LANDY** (*Lighting Design*) This marks Chris' 14th production for Gateway and Candlewood Playhouses. Past productions include *TOMMY*, *CABARET*, *CRAZY FOR YOU*, *PHANTOM*, *CITY OF ANGELS*, and *CAROUSEL*. Recently he designed *MADAMA BUTTERFLY* for Boheme Opera, *DON CARLO/DON CARLOS* for Pala Opera, *IVANOV* at the Ohio Theatre, *THE WINTER'S TALE* at Columbia University, *MERCHANT OF VENICE* at the Interlude Theatre, *ANGEL STREET* at the Westport Country Playhouse. His work has also been seen at Playhouse 91, the Butane Group, Centennial Theatre Festival, Samuel Beckett Theatre, and Union Square Theatre. He is Ken Billington's assistant on the National tour of the Tony award-winning *CHICAGO*. Chris received his MFA in lighting and scenic design from NYU.

**MARK CLARK** (*Sound Designer*) is celebrating his sixth year as Gateway's Resident Sound Designer. He has designed all mainstage productions, and especially enjoyed working on *PHANTOM*, *ONCE ON THIS ISLAND*, *GRAND HOTEL* and *TOMMY*. Mark travelled to the Far East with *GREASE* and *SOUTH PACIFIC*, with stops in Hong Kong, Malaysia, Singapore, and Indonesia, and also toured the U.S. and Canada with *MY FAIR LADY* and *42ND STREET*.

**CHUCK BATCHELOR** (*Costume Designer*) is the resident costume designer for the Costume World Theatrical Division, the nation's second largest costume outlet. He studied design at Slippery Rock University in Pennsylvania and at Point Park College in Pittsburgh. Formerly, Chuck was the resident costume designer with the Pittsburgh Lab Theatre and Music Theatre North in Potsdam, NY. Among the shows Chuck has designed are *GRAND HOTEL* for the Royal Palm Dinner Theatre of Boca Raton, Florida; Carleton Davis' New England Tour of *PHANTOM*; toured as the wardrobe supervisor with the National Tour of *YOUR ARMS TOO SHORT TO BOX WITH GOD* for Pyramid Entertainment in New York and *LA CAGE AUX FOLLES*, showcased at New York's Gateway Playhouse, Candlewood Playhouse and Sarasota's Golden Apple Dinner Theatre and *SHOWBOAT* for Florida's Gold Coast Opera.

**JOSE M. RIVERA** (*Costume Coordinator*) returns to Gateway for a fourth season. He is currently represented by the national tour of *THE WIZ*, starring Grace Jones and Peabo Bryson. He has designed, assisted, coordinated and consulted on over 150 productions for such Major Theatres and corporations as: The Paper Mill Playhouse, The Walnut Street Theatre, Kenneth Feld Productions, North Shore Music Theatre, FID, AAA, Holland America Cruise Lines, Jean Ann Ryan Productions, Alford Productions, New Jersey Opera and The Forum Theatre Group. Recent credits: The Off-Broadway production of *WARP*, *CAINE MUTINY COURT MARSHAL*, *LAUGHTER ON THE 23RD FLOOR*, *DON GIOVANNI*, *CARNIVAL*, *GENTLEMEN PREFER BLONDES*, and *GIGI*. Mr. Rivera received a Barrymore Award for his designs.

## ALL COUNTY Security Systems, Inc. Residential • Commercial

### WIRELESS

- Burglar Alarms
- Heat Detectors
- Fire
- Central Station
- Freeze Alert
- Medical Alert

### FREE ESTIMATES

Authorized Distributor For  
Dynamark • AllGuard  
Safety Security Products

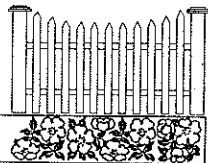
(516) 286-8330

All County Home Security Systems  
680 South Country Road  
East Patchogue, New York 11772



# Mayer's

## FLOWER COTTAGE



"We express your feelings  
— beautifully"

400 Medford Avenue,  
Patchogue, NY 11772  
(516) 475-1779



Flowers delivered anywhere  
Weddings and parties  
our specialty

Jeffrey Mayer - Lynda Mayer

# STAGEDOOR Dance SCHOOL OF

BALLET . POINT . TAP . JAZZ . TAP & BALLET COMBO . LYRICAL . HIP HOP

25 PATCHOGUE-YAPHANK RD.  
E. PATCHOGUE

*Celebrating Our  
20th Anniversary*

Pre-School thru Adults

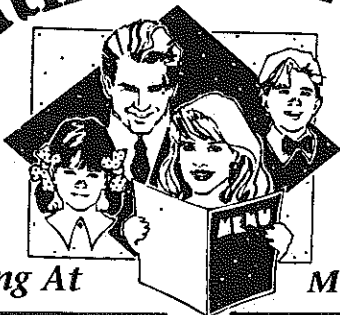
Family Discounts

Call  
**654-8858**

Artistic Director  
Diane Giattino

Fall  
Registration  
Begins  
August  
12th

# South Country Inn



Fine Dining At

Moderate Prices

**Extensive Menu**

**Special Attention**

Continental Cuisine  
Early Bird Specials

Given to Theater Goers...We'll  
get you to the show on time!

**Theater Groups**

Welcome for Lunch and Dinner

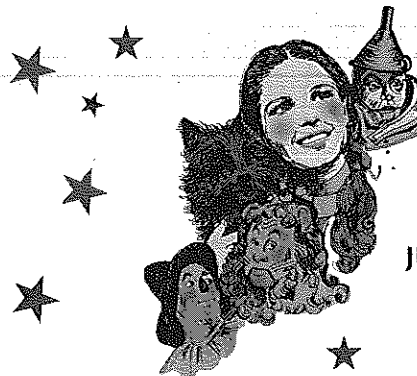
668 South Country Road, East Patchogue

Open 6 days **758-1919** Closed Monday

Open  
12 Noon  
to 11 PM  
Daily

# CHILDREN'S THEATRE

Live Musical shows! - Friday and Saturday mornings at 10:30 a.m.  
All Seats \$6.00

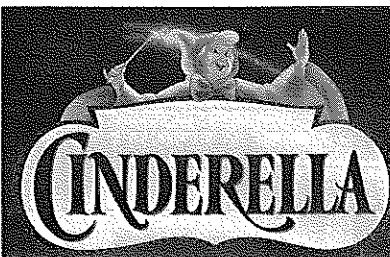


The  
*Wizard  
of Oz*

JUNE 27, 28  
JULY 5, 11, 12

# Mary Poppins

JULY 18, 19      AUGUST 1, 2  
JULY 25, 26      AUGUST 8, 9



# CINDERELLA

AUGUST 15, 16  
AUGUST 22, 23  
AUGUST 29, 30

Phone orders - (516) 286-1133



Remaining tickets will be sold at the door, the morning of the show.  
Sorry, Children ages 2 and older only. Shows subject to change without notice.

# family melody center

Expert Private Lessons ■ Popular Music ■ NYSSMA Music  
Expert Repairs on Premises ■ Finest Quality Rentals ■ Guitars ■ Amps ■ Drums  
**Lowest Discount Prices on All Band & Orchestra Instruments**

77 South Ocean Avenue, Patchogue, NY 11772

**(516) 475-3210**

# BAY STREET THEATRE

World Premiere

## My Good Name

by Arthur Laurents

A savage high comedy about greed, identity and family honor.

From the distinguished author of GYPSY, WEST SIDE STORY, THE TURNING POINT and THE WAY WE WERE

June 25 - July 20

World Premiere

## Heaven & Earth

A Special Commission by JOE PINTAURO

Based on the book by Steve Wick

In the spirit of MEN'S LIVES, a portrait of an American family, inspired by the rich history of one of our country's oldest communities, the farmers of the North Fork.

July 30 - August 31

Bay Street Theatre

## Summer Gala Benefit Bash



Fantasy Auction, Dinner, Dancing

Call Sonya Horowitz at 725-0818

Sat., July 12 6:30 pm

ORDER BY PHONE (516) 725-9500

On the Long Wharf, Sag Harbor



## COLEMAN CESSPOOL SERVICE, INC. SCHWAB's Cesspool Cleaning

PRECAST CESSPOOLS INSTALLED

A. COLEMAN

Phone: (516) 475-1733 878-2010

Locally Owned and Operated For Over 50 Years

1 CHAPEL AVENUE  
EAST PATCHOGUE, NEW YORK 11772

RELIABLE SERVICE

## GATEWAY PLAYHOUSE STAFF

Executive Producers..... Ruth and Stan Allan  
Producers ..... Paul Allan, John Hodge  
Associate Producer ..... Jeff Bellante  
General Manager..... Gale Edwards  
Director ..... David Armstrong  
Musical Director ..... William A. Reilly  
Casting Director ..... Robin Joy Allan  
Choreographer ..... Sharon Halley  
Production Stage Manager ..... Gail Eve Malatesta  
Scenic Designer/Technical Director ..... Michael Boyer  
Sound Designer ..... Mark Clark  
Costume Designer ..... Chuck Batchelor  
Lighting Designer ..... Christopher J. Landy  
Wig Designer ..... Alexis Pruiksmas  
Assistant Technical Director ..... James Kane  
Propmaster ..... David Dovell  
Assistant Stage Manager ..... Ned Noyes  
Assistant Set Designer ..... Jeff Van Velsor  
Assistant Lighting Designer ..... Josh Bradford  
Dance Captain ..... Staś Kmieć  
Shop Foreman ..... Rick Styles  
Master Electrician ..... Jason Strangfeld  
Master Scenic Artists ..... Jeff Matteo, Andris Krumkalns, Jason Hettel, Kat Conley  
Costume Coordinator ..... Jose M. Rivera  
Wardrobe ..... Catherine LoCurto  
Technical Staff ..... James Sturek, Dutch Guyeff, Rob Conover, Shana Skop, Kenny Brock, Joe Siggia, Nick Nevola, Asha Shaw  
Musical Contractor ..... Dan Yeager  
Children's Theatre Director ..... Terry Bles  
Children's Theatre Musical Director ..... Peter Pece  
Children's Theatre Stage Manager ..... Ned Noyes  
Box Office Manager ..... Nancy Kana  
Group Sales ..... Nadine Hazard  
House Manager ..... Jeff Monteith  
Box Office Staff ..... Gladys Hawkins, Edith Menegus, Laurie Hunter, Jessica Gearity, Trudi Millan, Christina Stewart, Melinda Markstaller, Danielle Perugini  
Production Assistant ..... Brenda Colonna  
Head Usher ..... Al Pollog  
Ushers ..... Rita Wehner, Marie Rachek, Irene Fritz, Cliff Andrea, Jill Andrea, June Budd, Mary Fitzpatrick, Amy Loudenback, Doris McHugh, Mickey McGrevey, Chris Millan, Bob Mohrmann, Caryn Sheridan, Marie Trotto, Patricia Yurdiga  
House Staff ..... Lynn Nofi, Robert Pavanello, James Boyd, Robert Nofi, Claire Hunter, Theresa Pavanello, Jaime Pavanello, Debra Sullivan, Robert Coupe  
Maintenance/Landscaping Supervisor ..... Bob Nofi  
Concession Manager/Production Photographer ..... Mil Kana  
Transportation Coordinator ..... John Schroeder  
General Counsel ..... Ann L. Nowak & Associates

Costumes produced by Costume World, Pompano Beach, Florida

**WARNING** - The photographing or sound recording of any performance is strictly prohibited.

Gateway Playhouse now offers a wireless sound enhancement system for the hearing impaired. Inquire at the box office for more information.

**FIRE NOTICE:** The exit indicated by a red light and sign nearest to the seat you occupy, is the shortest route to the outside. In the event of fire or other emergency, please do NOT run. WALK to that Exit. However, under normal circumstances, when leaving the Theatre, use the center rear exit. SMOKING is prohibited in the THEATRE, as required by a new Suffolk County NO SMOKING ordinance. Please do not smoke in any area designated "No Smoking." This renders the offenders subject to a fine or imprisonment or both.



**SOMETHING IS ALWAYS GOING ON AT...**

**OKAY DOKEY**

*A place for everyone!*

**B.B.Q. TAKE-OUT**

(Catering Packages)

**2-FERS EVERYDAY**

3PM-7PM  
and  
10PM-MIDNIGHT  
FREE BAR BUFFET

**MEXICAN MADNESS & KARAOKE**

**SUNDAY BRUNCH BUFFET**

**LUNCH - DINNER - LATE NIGHT**

**PATCHOGUE**

499-59 Sunrise Highway  
654-0700 ■ Fax: 654-1066

**HAUPPAUGE**

Corner Rt. 111 & 347  
265-5102 ■ Fax: 265-5422

**ROE agency inc.**  
▲ INSURANCE ▲

**A Century of Commitment**

Walter Roe, Pres. Pat Mankowski, VP  
Virginia Flynn, VP Sharon Maler, VP

125 EAST MAIN STREET  
PATCHOGUE, NY 11772-0970

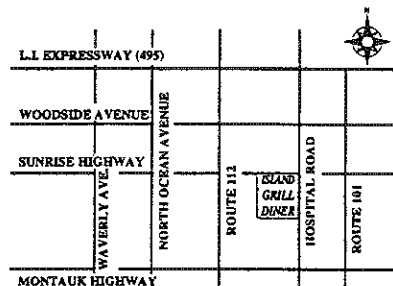
(516) 475-4000  
FAX (516) 475-7648



**ISLAND GRILL DINER - RESTAURANT**

*We specialize in: Seafood . Steaks . Chops  
Homemade Baked Goods*  
**OPEN 24 HOURS  
INCLUDING ALL HOLIDAYS**  
*Catering & Private Parties*

- Special Breakfast Menu
- Sautéed Menu
- Pasta Menu
- Special Island Grill Seafood Combinations
- Complimentary Class of Wine with Lunch or Dinner
- Special Continental Menu
- 15% Discount for Senior Citizens



140 Hospital Road . Sunrise Highway,  
E. Patchogue 516-475-2110 . FAX 516-475-2180

(516) 475-1790-1791  
Fax (516) 475-1807

Emergency Boarding  
Service  
Call 289-1524

**PATCHOGUE  
PLATE GLASS CO. INC.**

GLASS-MIRRORS-PLEXIGLASS-STORE FRONTS  
AUTO GLASS-INSURANCE CLAIMS

**RON HENTHORNE**  
Manager

7 Railroad Ave.  
Patchogue, NY 11772

*Swan Bakery*

*"Serving the Community Since 1946"  
Celebrating our Third Anniversary  
under new ownership*

Official Baker to the Gateway Playhouse

Guy J. Gagliano Robert E. Roode

15 South Country Road  
East Patchogue, N.Y. 11772

Tel. (516) 475-9626

*Gude*  
photography  
8 W. Main St.  
Patchogue NY  
654-8093

Susann Gude

**"Kodak Gallery"  
Award Winner**

516-726-8000



**Ann L. Nowak  
&  
Associates**  
ATTORNEYS AT LAW

"We specialize in helping  
small businesses and  
sole proprietors."

- Contracts
- Zoning
- Injuries
- Litigation
- Real Estate
- Bankruptcy

*General Counsel to the  
Gateway Playhouse*

Deerfield Green, P.O. Box 1290  
Water Mill, NY 11976-1290

**DO YOU RECEIVE OUR FREE BROCHURE EACH YEAR?  
If not, fill out this form and leave it in the box office.**  
(Please Print)

Name \_\_\_\_\_  
Address \_\_\_\_\_  
Zip \_\_\_\_\_

**BOX OFFICE HOURS**

Monday, Tuesday 12:30 - 5:00 p.m.  
Wednesday thru Saturday 12:30 - 9:30 p.m.  
Sunday 12:30 - 7:00 p.m.



**CREDIT CARD ORDERS 286-1133 (Based on ticket availability)**  
Mailing Address: Box 5, Bellport, New York 11713