

It's Not A Small World,
We Just Make It Seem That Way.



Over 3,900 flights a day.

Over 250 cities. Over 40 countries.

And over 90,000 people dedicated to bringing
you the world in a way that's uniquely American.

Call your Travel Agent or American at

1-800-433-7300. Or visit us on the

web at www.americanair.com

American Airlines
American Eagle

United States Europe Latin America Caribbean Canada Mexico Japan

American Airlines and American Eagle are registered trademarks of American Airlines, Inc.
American Eagle is American's regional airline associate.

GATEWAY PLAYHOUSE

PLAYBILL

1997

Swan Lake

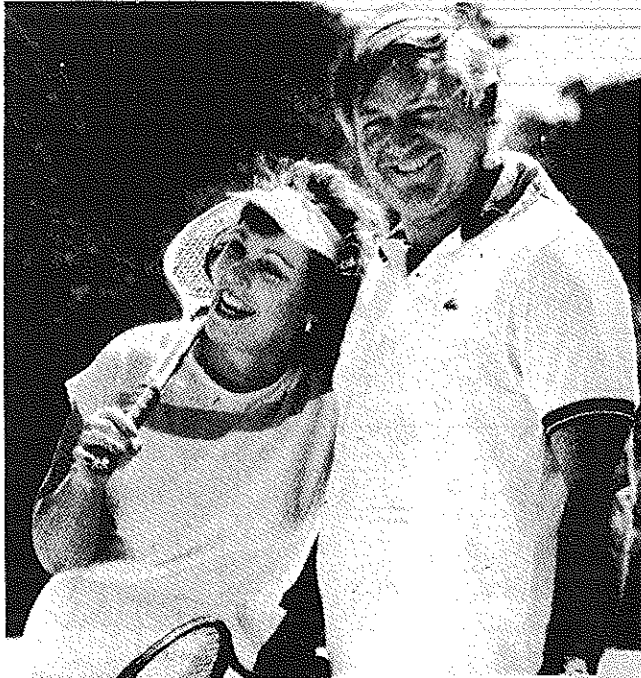
August 13 - 31



Sleeping Beauty

September 2 - 13

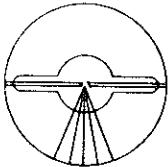
For peace of mind...
Take the time



MAMMOGRAPHY SAVES LIVES

Full Mammography accreditation by the American College of Radiology

BROOKHAVEN RADIOLOGIC ASSOCIATES, P.C.



HOSPITAL ROAD PROFESSIONAL CENTER
250 Patchogue-Yaphank Road
East Patchogue, New York 11772
(516) 475-1030

WALTER P. QUIGLEY, M.D., D.A.B.R.
RONALD S. HAMES, M.D., D.A.B.R.
SETH O. MANKES, M.D., D.A.B.R.
STEVEN EPSTEIN, M.D., D.A.B.R.
DANIEL F. SETTLE, M.D., D.A.B.R.

MARK J. LODESPOTO, M.D., D.A.B.R.
IRA J. LANGER, M.D., D.A.B.R.
MARILYN LERNER, M.D., D.A.B.R.
JOHN S. McCORMICK, M.D., D.A.B.R.

LONG ISLAND WORKS WITH WALK 97.5!



WALK'S NO REPEAT WORKDAY MEANS YOU WON'T
HEAR THE SAME SONGS OVER AND OVER AGAIN.
JUST A GREAT VARIETY ALL DAY LONG FOR EVERYONE
AT WORK. TUNE YOUR OFFICE RADIO
TO WALK 97.5 TODAY!

WALK^{FM} 97.5

BATCH HOUSE BREWERY



"Come try our microbrewed beer and sample our delicious menu"

67 West Main St., Patchogue, NY 11772

(516) 447-BEER

THE NEW

Carman's River Inne

Fine Country Dining

"Rated Top 10 Restaurant" - Newsday 96

"A Country Hideaway, the Bar and Restaurant Glows"

Natural Warmth and Charm
Hearty Well-Presented Cuisine
The Food - The People

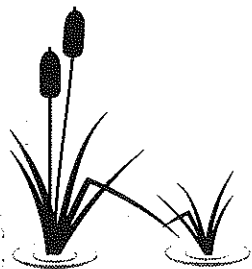
Day Tripping to the Wineries?
Perfect for Lunch or Dinner

Open 7 Days

450 Main Street, Yaphank, NY • (516) 345-3302

Easy access from LIE: East-Exit 66, West-Exit 67

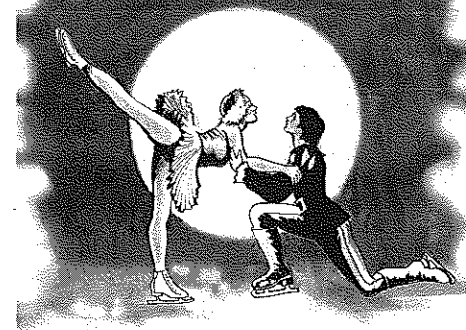
Call for Reservations and Directions



ALLAN and ALLAN ARTS, LTD.
in association with
PAUL ALLAN and JOHN HODGE

presents

Swan Lake on ice



August 13 - August 31

featuring

THE RUSSIAN STARS

of the

ST. PETERSBURG STATE ICE BALLET

Music Composed By
Peter Illich Tchaikovsky

Costume Designer
Mikhail Shavdatuashvili

Lighting Designer
Maya Shavdatuashvili

Musical Director
Leo Korkhin

Choreography and Staging by
Merited Artist of Russia, Konstantin Rassadin

THE STORY OF SWAN LAKE — ACT I

Scene One — The Palace Garden

The story opens as peasants and royalty alike, dance and revel in celebration of Prince Siegfried's twenty-first birthday. Shortly, the entrance of Siegfried's mother, the Sovereign Princess, brings the merriment to a halt as she tells Siegfried that his age now demands that he face his responsibilities. Soon he will be king. Tomorrow at the court ball he must choose a bride from among the beauties of the kingdom. After the queen departs, the party again becomes lively and the revelers dance long into the afternoon. At sunset the guests toast the prince and begin to depart. Noticing a flock of swans flying by, Siegfried and his friends decide to go off hunting.

Scene Two — The Lake

Moonlight illuminates a lake and forest clearing blanketed in mist. An evil apparition, part bird and part man, is seen. It is the sorcerer, Rothbart. He senses Siegfried's approach and hides himself. As the fog lifts, Siegfried enters, drawn to this enchanting spot. He sees that the swans have settled on the lake and raises his bow, but he finds himself unable to shoot. The leading swan slowly approaches. The prince watches in amazement as the swan changes form before his very eyes. Though it still moves with all the grace of a swan it has become a woman. The Prince discovers that she is Odette, queen of the swans, and that the lake is made from her mother's tears which poured forth long ago on the day that the sorcerer imprisoned Odette in the shape of a swan. Now she is only allowed to take human form between midnight and dawn. She tells Siegfried that only true love can save her. A man who will marry her and be loyal forever will break the sorcerer's evil spell, but should that man betray her she will never have another chance to become human. The Prince tells Odette that he is smitten by her and that he can indeed be that man. Suddenly Rothbart enters. Siegfried raises his bow, but the swan queen stops him, fearing that if the sorcerer is killed the spell may never be broken. The Prince invites Odette to the ball and promises to choose her for his bride, but she explains that the evil spell will not allow her to leave the forest. A wedge of swans, dressed just like Odette, now appear. The Prince is spellbound by their beautiful display. As the sky grows lighter, Odette and the swans prepare to depart. Rothbart emerges and sends the swans back to the lake as he hypnotically draws Odette to him. She tries to break free but Rothbart's power is too strong and she slowly returns to the form of a swan. Siegfried is left alone.

INTERMISSION

THE STORY OF SWAN LAKE — ACT II

Scene One — The Palace Ballroom

The ball is underway and knowing that he must choose a wife, Siegfried thinks only of Odette. The loveliest maidens in the kingdom are paraded before him and he slowly dances with each. Knowing he must choose a wife, but not seeing Odette, the Prince's chest heaves with despair. As his mother is about to question him two strangers arrive. The man claims to be a baron but looks suspiciously like the sorcerer. With him is his daughter Odilia. She looks enticingly familiar and Siegfried becomes captivated by her. Unknown to Siegfried the man is the sorcerer and he has transformed his own daughter into the image of Odette in order to trick the Prince. As they dance together the Prince becomes ever more spellbound and abandons himself to this magical creature, believing her to be Odette. Suddenly a cry in the distance disturbs his rapture. The swan queen has appeared in the window. She reaches for Siegfried silently begging him not to forget her. Rothbart sees her as well and commands his daughter to distract the Prince. Beguiled, Siegfried proposes marriage to Odilia and she accepts. Thunder crashes and it grows dark. Siegfried's doom is sealed. Rothbart takes great joy in showing the Prince his error. Siegfried is horrified. Odilia laughs at him and throws his bouquet to the floor in disgust as she vanishes with the sorcerer. Sobbing, Siegfried says good-bye to his mother and runs off to the forest to find his true love.

Scene Two — The Lake

It is a dark and desperate night. The swan maidens dance sadly in the mist as they await their queen. Odette appears, her body racked with sobs. She knows she has lost her chance for love and life. Bolts of lightning frighten the swans into a flurry of movement, the maiden swans huddling together in small groups to comfort one another. Siegfried rushes in and searches among them, at last discovering Odette. He explains to her how the sorcerer tricked him. Odette tells him that now her only chance for happiness is death. Rothbart enters and laughs at Siegfried, telling him that all these creatures are in his power. The sorcerer tries to separate the lovers, but the Prince prevents him from seizing Odette. As the swans fly off and Odette prepares to drown herself in the lake of her mother's tears, Prince Siegfried vows to follow her so that they can spend eternity in the comfort of each others arms.

THE CAST

Prince Siegfried	Pavel Ivanov or Alexei Pogodin or Oleg Riabov
Odette/Odilia	Olga Kuvashova or Elena Komarova or Lioudmilla Pantchina
Rothbart	Alexei Pogodin or Pavel Ivanov or Oleg Riabov
Mentor	Andrei Stroganov
Jester	Leonid Smirnov or Alexei Sivak
Sovereign Princess	Irina Chilova
Master of Ceremonies	Igor Antonov
Pas de Trois	Lioudmilla Pantchina, Natalia Khazova, Oleg Riabov or Tatiana Prokofieva, Anastasia Bunina, Iouri Tarasov
Two Swans	Tatiana Prokofieva, Anastasia Bunina
Little Swans	Galina Kopoteva, Natalia Khazova, Irina Shakhovskaya, Alina Pisarenko
Female Jesters	Galina Kopoteva, Irina Shakhovskaya
Spanish Dance	Olga Roshe, Marina Lekmus, Valerie Guinitch, Mikhail Prokofiev
Hungarian Dance	Alina Pisarenko, Alexei Sivak
Russian Dance	Tatiana Prokofieva
Mazurka	Lioudmilla Pantchina, Oleg Riabov or Anastasia Bunina, Andrei Stroganov

STAFF FOR THE ST. PETERSBURG STATE ICE BALLET

General Manager	Mikhail Kaminov
Principal Choreographer	Merited Artist of Russia, Konstantin Rassadin
Musical Director	Leo Korkhin
Company Managers	Elena Markova, Iakov Kritchak
Rehearsal Coaches	Merited Artist of Russia, Galina Pirozhnaya, Lioudmilla Pantchina, Elena Markova
Technical Director	Mikhail Shavdatuashvili
Senior Wardrobe Mistress	Anna Mumrina
Senior Makeup Artist	Galina Schmidt
Lighting Designer	Maya Shavdatuashvili

Swan Lake On Ice Presented in the United States by Bresner Management International, 1 West 67th St., Suite 2E, NYC NY 10023.

WARNING The photographing or Sound Recording of any performance is strictly prohibited.

Our next production will be **SLEEPING BEAUTY ON ICE** which runs from September 2 through September 13, 1997

Bellport Country Club

ONE GREAT PERFORMANCE DESERVES ANOTHER

Fairway's Cafe

Upstairs at the Bellport Country Club (Elevator Available)

Serving Lunch and Dinner Tues-Sun, 11:30 to Closing

Specializing in Succulent Steaks and Chops

RESERVATIONS
ENSURE WE'LL
GET YOU TO THE
SHOW ON TIME!

Spectacular
Sunday Brunch
BUFFET
\$14⁹⁵
Served
11:30am - 3pm
Sunset Dinners Served
4 pm till Closing

COMPLETE
"EARLY BIRD"
SUNSET DINNER
\$13⁹⁵
From
Wed.-Sat: 4pm till 6pm
Sun. 4pm till Closing

Wednesday
Prime Rib Night
Complete Dinner
\$15⁹⁵
Served 4pm till Closing

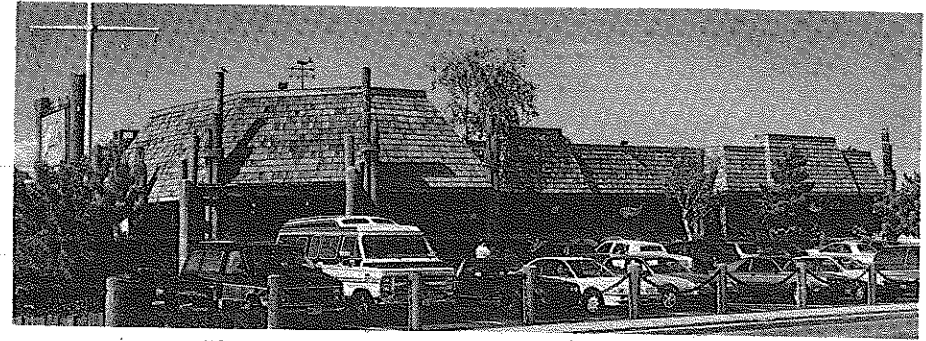
Thu., Fri., Sat.
7:30pm till Closing
Lobsters
(Steamed or Broiled)
Corn on the Cob, Crabcake, Colestlaw
\$16⁹⁵

Just 2 minutes West of Gateway



Veranda Dining • Gift Certificates Available Reservations
South Country Road • Bellport Village • (516) 286-4227

Harbor Side Restaurant



"Incomparable Seafood Restaurant"

Complete Lunches from \$7.95

Complete Early Bird Menu
Mon. - Fri. 3:30 p.m. - 5:45 p.m.
Starting at \$11.95
Appetizers from \$4.50
Dinners from \$14.95

Special Rates for
Theatre Groups from 20 to 125
Call for more information.

House Specials

- 24oz. Marinated Porterhouse Steak
- Cajun Blackened Swordfish (Louisiana Style)
- 24oz. Boneless Rib Eye Steak (marinated)
- Whole Stuffed Lobster with Crab Meat includes: Salad, Potato & Vegetable

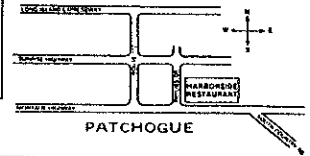
\$15.95

Open 7 Days a Week at 11:30 a.m.

Highly Recommended:

• • • *Newsday, Daily News*
NY Post & The Practical Gourmet

located on the corner of East Main St.
(Rt. 27A) and Phyllis Drive



503 E. Main Street, Patchogue, New York (516) 654-9290

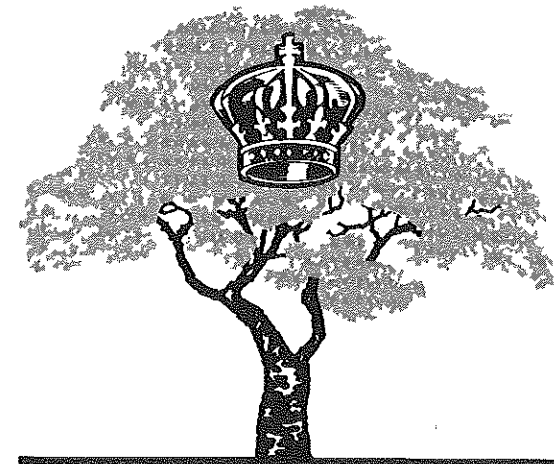
Tremendous selection of fine jewelry,
period jewelry and collectibles.
Savings on unredeemed merchandise.
Written/Verbal and Estate Appraisals by appointment

Wm. J. O'Neill

Serving Manhattan to Montauk
Jewelers and
Collateral Loanbrokers

One East Main Street,
Patchogue
289-9899

Sean and Veronica Cantwell, Kathryn Cantwell



ROYAL OAK

Diner - Restaurant

Station Road and Sunrise Highway - Bellport, New York 11713

HOURS: 6:00 A.M. - 2:00 A.M. SEVEN DAYS A WEEK

TEL. (516) 286-5757

Bellport CHOWDER HOUSE



An Eating and Drinking Tradition

FULL MENU

FULL BAR

Open Daily For Lunch and Dinner
Seven Days A Week

CHAMPAGNE BRUNCH SUNDAY NOON TILL 3 P.M.

Sunday - Thursday till 11:00 p.m. Friday & Saturday till Midnight

**SPECIALIZING IN FRESH LOCAL SEAFOOD
AT AFFORDABLE PRICES**

*Before and After the Show You'll Want to Meet and Eat At
THE CHOWDER HOUSE*

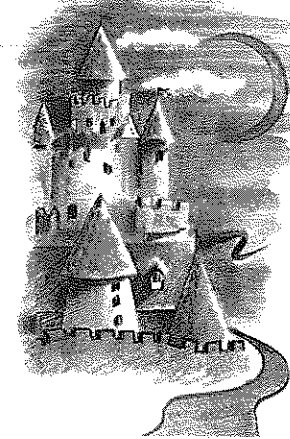
TAKEOUT

CATERING

19 Bellport Lane • Bellport Village • 286-2343

ALLAN and ALLAN ARTS, LTD.
in association with
PAUL ALLAN and JOHN HODGE
presents

Sleeping Beauty on ice



September 2 - September 13

featuring

THE RUSSIAN STARS

of the

ST. PETERSBURG STATE ICE BALLET

Music Composed By
Peter Illich Tchaikovsky

Costume Designer
Mikhail Shavdatuashvili

Lighting Designer
Maya Shavdatuashvili

Musical Director
Leo Korkhin

Choreography and Staging by
Merited Artist of Russia, Konstantin Rassadin

THE STORY OF SLEEPING BEAUTY

A Brief Synopsis

ACT I

The Christening - The King and Queen have invited the fairies to Princess Aurora's christening. A clap of thunder heralds the arrival of the wicked fairy, Carabosse, who has been omitted from the Master of Ceremonies guest list. Furiously angry, she curses the baby and says one day Aurora will prick her finger and die. The Lilac Fairy promises that she will only sleep.

The Spell - On her 16th birthday, Aurora dances with four suitors in the Palace. An old woman offers her a spindle and Aurora pricks her finger on a hidden needle. The old woman reveals herself as Carabosse, but the Lilac Fairy promises that Aurora will be awoken by a Prince; until then the kingdom sleeps.


ACT II

The Vision - A hundred years have passed. Prince Desire, while hunting in the forest, is shown a vision of Aurora by the Lilac Fairy and begs to be taken to her. Despite being guarded by Carabosse, he awakens Aurora with a kiss and they fall in love.

The Wedding - The Court celebrates the marriage of the Prince and Princess. Famous fairytale characters appear; such as Red Riding Hood, Puss in Boots and the Bluebird. The Lilac Fairy bestows her blessing upon the couple.

ACT III TAKES PLACE AT



Patchogue Floral's Fantasyland 

LARGEST EMPORIUM CATERING TO
THE ESTHETIC PROCUROR OF UNUSUAL HOME DECOR —

Giftware - Art Crafts - Custom Permanent Arrangements

10 Robinson Avenue • East Patchogue • 475-2059

COME
BROWSE

HISTORY OF THE SAINT PETERSBURG STATE ICE BALLET

With its debut in 1967, Constantine Boyarski established ice ballet in Russia. By combining classical dance with the sport of figure skating, a new genre was born. On the basis of the "Nutcracker," to music by Tchaikovsky, Boyarski produced the first ice ballet performance bearing the name of the "Crystal Palace," which was an immediate success with the discerning Russian audience. As the repertory grew, so did the talent, scenery and program. Today a company of one hundred skaters, with more than 800 costumes, grace the mirror-like surface of the ice. The majority of the performers have been honored with medals and awards from Russia and international competitions. Since that first performance, the company has been seen in over 5000 performances by audiences in the Soviet Union, Poland, Sweden, Finland, Greece, Belgium, the United Kingdom, South Korea, and the Netherlands. This winter, the ballet company will embark on its third tour of North America.

SLEEPING BEAUTY

A Ballet based on a fairytale in two acts

THE CAST

King	Mikhail Prokofiev
Queen	Yulia Paryguina
Princess Aurora	Olga Kuvashova or Elena Komarova or Loudmilla Pantchina
Prince Desire	Pavel Ivanov or Alexei Pogodin or Oleg Riabov
Lilac Fairy	Elena Komarova or Tatiana Rodionova
Carabosse, the wicked fairy	Leonid Smirnov or Marina Lekhmus
Tenderness Fairy	Tatiana Rodionova
Playfulness Fairy	Natalia Ilitcheva
Generosity Fairy	Loudmilla Pantchina
Light-heartedness Fairy (Canary)	Irina Shakhovskaya
Catalabutte, Master of Ceremonies	Andrei Stroganov
Suitors	Alexei Pogodin, Oleg Riabov, Pavel Ivanov, Mikhail Lomovsky
Diamond Fairy	Natalia Khazova
Sapphire Fairy	Irina Shakhovskaya
Gold Fairy	Tatiana Rodionova
Silver Fairy	Anastasia Bunina
Princesse Florina	Loudmilla Pantchina
Bluebird	Oleg Riabov
Red Riding Hood	Alina Pissarenko
Wolf	Alexei Sivak
White Puss	Galina Kopoteva
Puss in Boots	Sergei Golodnev
Courtiers, Carabosse's Suite, Hunters	Dancers of the Ballet

STAFF FOR THE ST. PETERSBURG STATE ICE BALLET

General Manager	Mikhail Kaminov
Principal Choreographer	Merited Artist of Russia, Konstantin Rassadin
Musical Director	Leo Korkhin
Company Manager	Elena Markova, Iakov Kritchak
Rehearsal coaches	Merited Artist of Russia, Galina Pirozhnaya, Merited Artist of Russia, Larisa Litvinenko, Elena Markova
Technical Director	Mikhail Shavdatuashvili
Senior Wardrobe Master	Anna Mumrina
Senior Makeup Artist	Galina Schmidt
Lighting Designer	Maya Shavdatuashvili

**Sleeping Beauty On Ice Presented in the United States by
Bresner Management International, 1 West 67th St., Suite 2E, NYC NY 10023**

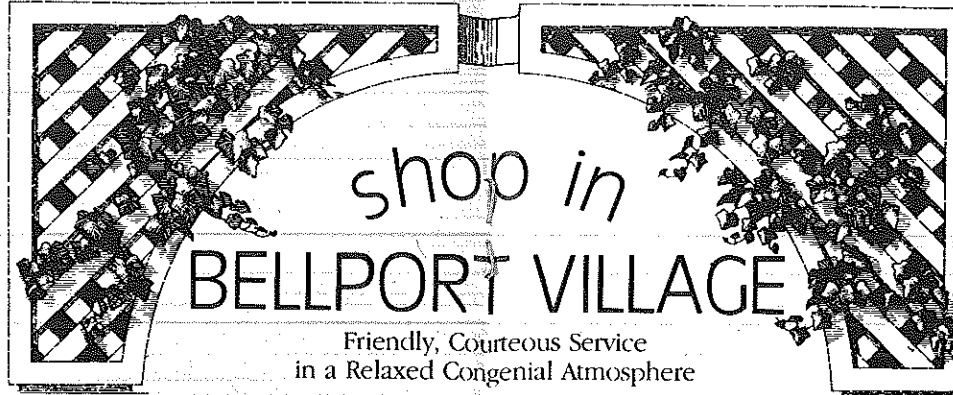
WARNING The photographing or Sound Recording of any performance is strictly prohibited.

Our next production will be **JOSEPH**...which runs from September 17 through October 12, 1997

Volunteers Wanted

Gateway Playhouse is seeking
volunteer ushers to join its
Volunteer Corps

Call 286-0555 for
more information



shop in
BELLPORT VILLAGE

Friendly, Courteous Service
in a Relaxed Congenial Atmosphere



AFTER THE SHOW STOP BY
AUNT EMMIE'S
FOR SOME

Granita Sugar Free Ice Cream

- Homemade Ice Cream•Old Fashioned Candies
- Corona Italian Ices•All Natural Frozen Yogurt
- Italian Cookies•Cappuccino
- Gourmet Coffee and much more.

OUTSIDE TABLES Just turn left at the light
8 Bellport Lane . Bellport, New York 11713 . (516) 286-2762



"We're Patient People"

AMATO FAMILY CHIROPRACTIC

16-2 STATION ROAD
BELLPORT, NY 11713

516-286-2300

Infant, Child & Adult Care

Dr. Frank J. Amato

FAX 516-286-6080 516-286-0510

Sentry Hardware

BELLPORT HARDWARE

Pittsburgh Paints • Hardware • Tools & Accessories
Complete Line of Stainless Steel & Grade 8 Nuts & Bolts
Screen & Window Repair

9 Bellport Lane • Bellport, NY 11713

TGA WALLEN'S MARKET

Choice Meats & Poultry • Fresh Produce & Dairy
Quality Service in a Friendly Neighborhood Market

Main Street, Bellport NY 286-0202

THE BANK OF NEW YORK

LONG ISLAND REGION

24-hour ATM

BELLPORT BANKING
OFFICE LOCATED AT:

32 Station Road
Bellport, New York 11713

Virginia Asero
Assistant Vice President

(516) 286-4200

Member FDIC 1986 The Bank of New York

Tel: 286-0395

LYONS FUEL OIL CO., INC.

23 Station Road, Bellport, N.Y.

BELLPORT PAINT & WALLPAPER, INC.

COMPLETE PAINT & WALLPAPER SUNDRIES



CABOT STAINS
OLYMPIC PAINT & STAINS
145 South Country Rd.

516-286-5850

Bellport, NY 11713

Paintings, Sculpture, Prints and Photography

Bellport Lane Art Gallery

7 Bellport Lane
Bellport, New York
(516) 286-4283

Representing Long Island Artists



Porto Bello

RISTORANTE

FINE ITALIAN CUISINE



Capture
the
Moment

Located at:
14 STATION RD. • BELLPORT, LI

for reservations or take out, call:

286-3300 • 286-3340

HOURS:
Mon-Thurs 11am-11pm
Fri, Sat 11am-1am
Sun 11am-11pm

Bellport Delicatessen

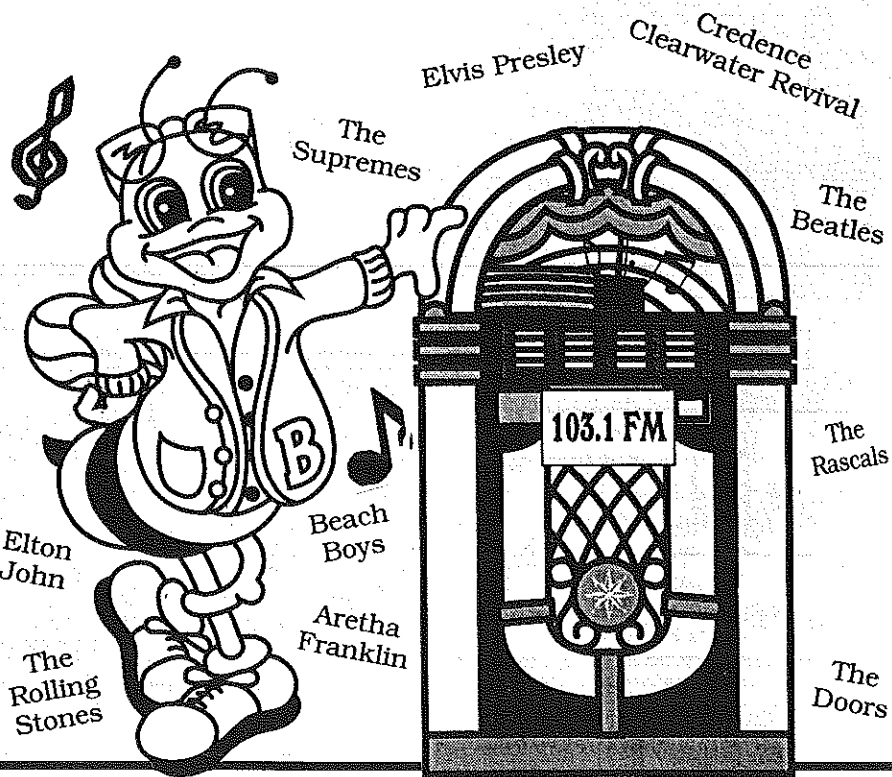
Catering is our Specialty

124 Main Street, Bellport
(516) 286-0444 • FAX 286-6666

Open 5:30 a.m. - 10:00 p.m. 7 Days a Week
Open for Breakfast and Lunch Specials

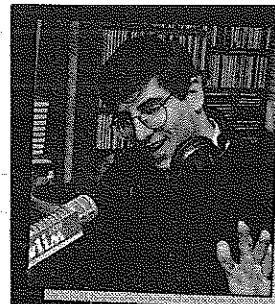
Homemade Muffins • Gourmet Coffees

Now THIS is an **OLDIES** station!

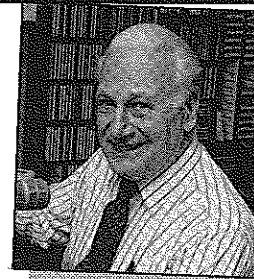


B-103
Long Island's Oldies

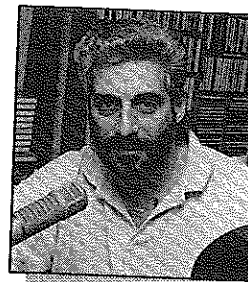
For the best
& most oldies!
103.1 FM



Rich Keith, 5:30-10:00 a.m.



Jack Ellsworth,
"Memories in Melody"
10:00 a.m. - Noon



Bob Stern, Noon - 3:00 p.m.
1-2 BDWY. Hollywood Show



Gil Ellis, 3:00 - 7:00 p.m.

Join Your **wlim** ^{STEREO}
Family

Monday - Friday

- Big Bands
- Popular Standards
- Local & Community News
- Daily Prizes

GLENN MILLER

FRANK SINATRA

ROSEMARY CLOONEY

BARBRA STREISAND

NAT KING COLE

DORIS DAY

BENNY GOODMAN

TONY BENNETT

BING CROSBY

wlim 1580 AM • Long Island Music

(516) 475-1790-1791
Fax (516) 475-1807

Emergency Boarding
Service
Call 289-1524

**PATCHOGUE
PLATE GLASS CO. INC.**

GLASS-MIRRORS-PLXIGLASS-STORE FRONTS
AUTO GLASS-INSURANCE CLAIMS

RON HENTHORNE
Manager

7 Railroad Ave.
Patchogue, NY 11772

Swan Bakery

"Serving the Community Since 1946"
Celebrating our Third Anniversary
under new ownership

Official Baker to the Gateway Playhouse

Guy J. Gagliano Robert E. Roode

15 South Country Road
East Patchogue, N.Y. 11772

Tel. (516) 475-9626



See The Show
And Stay The Night

Also Serving Breakfast

160 South Country Road
Bellport, NY 11713
(516) 286-8588

516-726-8000

**Ann L. Nowak
&
Associates**
ATTORNEYS AT LAW



"We specialize in helping
small businesses and
sole proprietors."

- Contracts
- Litigation
- Zoning
- Real Estate
- Injuries
- Bankruptcy

**General Counsel to the
Gateway Playhouse**

Deerfield Green, P.O. Box 1290
Water Mill, NY 11976-1290

Old Inlet Inn



The Fine Dining Experience

Dinners from 5:00 p.m.
Sunday Brunch 12 - 3:00 p.m.
Sunday Dinner 3 - 9:00 p.m.
Closed Mondays

Old Fashioned
Nor' Eastern Lobster Bake
every Wednesday \$32.00/person

Show Tune Sing-A-Longs on
Fri. & Sat. with Jim Ahrend
at the piano 9-1:00 AM

Patio Dining Season Ticket Holders
10% Discount
108 So. Country Road
Bellport 286-2650

WHO'S WHO IN THE COMPANY

MIKHAIL KAMINOV Mr. Kaminov, General Director of the St. Petersburg State Ice Ballet, was the reiterted champion of Leningrad and Russia in pair figure skating and a Master of Sports of Russia. Mr. Kaminov joined the St. Petersburg troupe in 1967, the day of its founding, and was a leading soloist. Upon finishing his performing career in 1988, he became the deputy manager of the ballet on ice and in 1994 assumed the position of general manager. Mr. Kaminov and his wife Valentina, a former principal of the company, have one son.

KONSTANTIN A. RASSADIN principal Choreographer of the Saint Petersburg State Ice Ballet, Merited Artist of Russia. Upon graduation from the world famous Academy of Russian Ballet named after A. Vagonova, Konstantin was immediately invited to join the renowned ballet troupe of the Maryinsky Theatre of Opera and Ballet of St. Petersburg (formerly the Kirov Theatre). For 23 years he occupied the position of ballet "star," having brilliantly premiered more than two dozen leading roles and performing with ballerinas such as Natalia Dudinskaya, Alla Shelest, Alla Osipenko, Natalia Markarova, and danseurs Konstantin Sergeev, Rudolf Nuriyev, and Mikhail Baryshnikov. He worked with the great ballet masters Yuri Grigorovich and Leonid Yakobson and studied at the St. Petersburg Conservatory. After receiving his first award for choreography, Mr. Rassadin began producing classical ballets and programs for theatre throughout the USSR and in 1980 joined the St. Petersburg State Ice Ballet in the capacity of its Principal Choreographer. His latest works for the company are "Romantic Poem" and the full length holiday spectacular, "Nutcracker."

LEO KORKHIN conducted Kirov Orchestra playing the Tchaikovsky score of "Sleeping Beauty." Born in 1929 in a musician's family, Leo Korkhin graduated from the Kiev Conservatory in a violin class in 1951. Since 1944, he has been the leader of the Kiev, Donetsk, and Leningrad Philharmonic orchestras. In 1959, he graduated from the Leningrad Conservatory in the class of orchestra conducting. During many years of fruitful work, Leo Korkhin has made numerous recordings and has collaborated with musicians such as D. Oistrakh, S. Rikhter, L. Kogan, E. Gilels, M. Rostropovitch, among others. He is the permanent guest conductor of the St. Petersburg Philharmonic and the leader of the chamber orchestra.

PRINCIPAL SKATERS

OLGA KUVASHOVA began skating at the age of seven and obtained a Master of Sports of Russia, won the title of Champion of St. Petersburg for three years running and won the "Amber Skates" title at the European Competitions. Miss Kuvashova is known for her classical and lyric roles such as Odetta in "Swan Lake," and Masha in "Nutcracker."

PAVEL IVANOV - Pavel is a leading soloist of the St. Petersburg State Ballet On Ice. His skill, excellent scenic abilities and understanding of music enable him to perform all the title roles including, the Prince in "Swan Lake," Romeo in "Romeo and Juliet," the Prince in "The Nutcracker" and the Prince in "Sleeping Beauty." His wife, Olga Kuvashova, is his partner and also a leading soloist of the Ballet On Ice.

ELENA KOMAROVA has won prizes at skating competitions all over the former USSR, Russia and on the international level. She is a Champion of Russia, Moscow, and St. Petersburg. She is also Champion of the "Amber Skates" competition and a Silver Medal winner of the skating competition "Cup of Russia." She also holds a silver medal for her performance in the "Panin Prize" competition.

ALEXEI POGODIN is a multiple champion and prize winner of the "Championships of St. Petersburg," the "Cup of Russia," quadruple champion of the international figure skating competition "Moscow News Trophy" and four time silver medal winner of the international competition "Cup of Friendship."

LIUDMILLA PANTCHINA began skating at the age of seven. In her ten years of competition she won the title of "Champion of St. Petersburg" three years running; was the champion of the international figure skating competition "St. Petersburg-Helsinki," and won silver medals at the "Cup of Russia," the "Championship of Russia," and the "Amber Skates." Miss Pantchina began working with the company at the age of 17 as a member of the corps-de-ballet, but soon turned to performing solo roles. She has performed such versatile roles as Odetta in "Swan Lake," Masha in "Nutcracker," and the acrobatic dance "Phoenix" in "Nutcracker." Along with her work with the company, Liudmilla graduated from the Moscow Conservatory-faculty of ballet masters. She is also the assistant choreographer for the company.

CABOT'S FLORIST

- WEDDINGS
- FUNERALS
- HOUSE PLANTS
- HOSPITAL ARRANGEMENTS

- FRUIT BASKETS
- STUFFED ANIMALS
- BALLOON BOUQUETS
- DRIED & SILK ARRANGEMENTS

Business
accounts
welcome

91 Medford Ave., Patchogue
(Rt. 112) South of Sunrise Hwy.
Minutes from Brookhaven Hospital
Next to Robertsocio Funeral Home

Order by Phone
We Accept Major Credit Cards

DAILY DELIVERIES

475-0408

SEARLES GRAPHICS INC.
Commercial Printers



1457 Montauk Hwy.
East Patchogue, NY
Phone: 516-286-2943
Fax: 516-286-3281

WHO'S WHO IN THE COMPANY (continued)

OLEG RIABOV was the silver medal winner of the "Championship of Russia."

ANDREI STROGANOV came to skating at the age of ten. He was a champion of the competition "Olympic Hopes," silver medalist in the "Championship of Russia" and the international "Cup of Friendship." Shortly he joined the company where his excellent technique and artistic abilities contributed to his passage from corps-de-ballet to character soloist.

TATIANA PROKOFIEVA was a silver medal winner of the "Competition of the Scandinavian Countries" and "Champion of St. Petersburg." She was the bronze medal winner of the international competition "Panin Prize."

ALEXEI SIVAK is a "Champion of St. Petersburg," a silver medal winner of Russia, "Champion of Russia," Champion of the "International Competitions" in Moscow, and the Champion of the "Cup of Moscow."

LEONID SMIRNOV was the "Champion of St. Petersburg," and a bronze medal winner of Moscow.

Coming to Gateway

Joseph

and the
amazing
technicolor
dreamcoat



A Magical Musical of a Timeless Adventure

September 17 - October 12

Joseph, the first big hit from Andrew Lloyd Webber, creator of Phantom Of The Opera, Cats, and Evita. Joseph was given a coat of many colors by his father Jacob that was red and yellow and green and brown... Sold as a slave by his envious brothers, Joseph eventually rises to power. Watch the story unfurl in all its multiple colors with camels and harem girls and dreams and listen to the magical score. It's a fun-filled tale of rags to riches with lifetime lessons for young and old alike.

SOMETHING IS ALWAYS GOING ON AT...



A place for everyone!

B.B.Q. TAKE-OUT
(Catering Packages)

2-FERS EVERYDAY
3PM-7PM
and
10PM-MIDNIGHT
FREE BAR BUFFET

MEXICAN MADNESS & KARAOKE

SUNDAY BRUNCH BUFFET

LUNCH ■ DINNER ■ LATE NIGHT

PATCHOGUE

499-59 Sunrise Highway
654-0700 ■ Fax: 654-1066

HAUPPAUGE

Corner Rt. 111 & 347
265-5102 ■ Fax: 265-5422



COLEMAN CESSPOOL SERVICE, INC.
SCHWAB's Cesspool Cleaning

PRECAST CESSPOOLS INSTALLED

A. COLEMAN

Phone: (516) 475-1733 878-2010

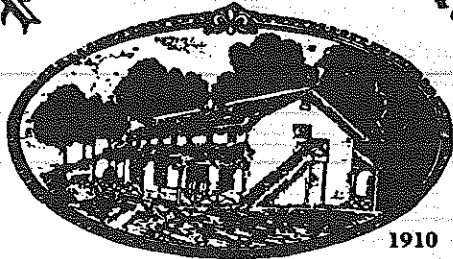
Locally Owned and Operated For Over 50 Years

1 CHAPEL AVENUE
EAST PATCHOGUE, NEW YORK 11772

RELIABLE SERVICE

Hine Grove Inn

On The Swan River



1910

Daily
Blackboard
Specials!

Open Weekdays
11:30 A.M.
Saturday
11:30 A.M.
Sunday
12:00 P.M.

EARLY BIRD SPECIALS

Monday thru Saturday, 3:30 p.m. to
6 p.m., Sunday 12 p.m. to 5 p.m.

LUNCH

Monday thru Saturday,
11:30 a.m. to 3 p.m.

SUNDAY DINNER SPECIALS

12 p.m. to 9 p.m.

Chapel Ave. & First Street • East Patchogue, NY
475-9843

OPEN WEEKDAYS 11:30 AM • CLOSED TUES. • SAT. 11:30 AM • SUNDAY 12 PM
Directions: LIE to Exit 64, Route 112 South to Montauk Hwy. (27A). Make a left (East) on Montauk
Highway to fork in road. Take right side of fork then immediate right onto Chapel Ave.

ACTING AND MUSICAL THEATRE TRAINING

storytelling & theatre games classes for 5-8 year-olds
all levels of acting for all ages thru adult
television auditioning and musical comedy classes



GATEWAY ACTING SCHOOL

now enrolling! 286-9014

LEARN FROM THE PROFESSIONALS!

GATEWAY PLAYHOUSE STAFF

Executive Producers.....Ruth and Stan Allan
ProducersPaul Allan, John Hodge
Associate ProducerJeff Bellante
General ManagerGale Edwards
Company ManagerTimothy Wilkins
Casting DirectorRobin Joy Allan
Resident Scenic Designer/Technical DirectorMichael Boyer
Sound Designer.....Mark Clark
Shop ForemanRick Styles
Head Carpenter.....Geoff Hebert
Master ElectricianJohn Robinson
Costume CoordinatorJose M. Rivera
WardrobeCatherine LoCurto, Josephine Funaro, Anna Warasila
Technical StaffJames Sturek, Kenny Brock,
Stacy Cooper, Melissa Vignato, Asha Shaw, Joe Sturek
Musical ContractorDan Yeager
Children's Theatre Director.....Terry Bles
Children's Theatre Musical DirectorPeter Pece
Children's Theatre Stage Manager.....Ned Noyes
Box Office ManagerNancy Kana
Group SalesNadine Hazard
House ManagerJeff Monteith
Box Office StaffGladys Hawkins, Edith Menegus, Laurie Hunter, Trudi Millian, Christina Stewart,
Melinda Markstaller, Donna Warner, Laura Marth, Elizabeth Dungan, Brenda Collona
Production AssistantMary Giattino
Head UsherAl Pollog
UshersRita Wehner, Marie Rachek, Irene Fritz, Cliff Andrea,
Jill Andrea, June Budd, Mary Fitzpatrick, Doris McHugh, Mickey McGrevey, Chris Millian,
Bob Mohrmann, Caryn Sheridan, Marie Trotto, Patricia Yurdiga
House StaffLynn Nofi, Robert Pavanello, Robert Nofi, Theresa Pavanello,
Debra Sullivan, Robert Coupe, Greg Mast, Steven Tedesco, John Hall, Martin Laverly
Maintenance/Landscaping Supervisor.....Bob Nofi
Concession Manager/Production PhotographerMil Kana
Transportation CoordinatorJohn Schroeder
General CounselAnn L. Nowak & Associates

Gateway Playhouse Ticket Booth is now open at the Smith Haven Mall

Located directly across from Cineplex Odeon Cinemas
Open Monday thru Saturday 10:00 AM to 9:00 PM • Sunday 11:00 AM to 6:00 PM

Tickets for all performances • Gift Certificates

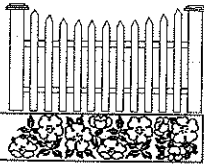
WARNING - The photographing or sound recording of any performance is strictly prohibited.

Gateway Playhouse now offers a wireless sound enhancement system
for the hearing impaired. Inquire at the box office for more information.

FIRE NOTICE: The exit indicated by a red light and sign nearest to the seat you occupy, is the shortest route to the outside. In the event of fire or other emergency, please do NOT run. WALK to that Exit. However, under normal circumstances, when leaving the Theatre, use the center rear exit. SMOKING is prohibited in the THEATRE, as required by a new Suffolk County NO SMOKING ordinance. Please do not smoke in any area designated "No Smoking." This renders the offenders subject to a fine or imprisonment or both.

Mayer's

FLOWER COTTAGE



"We express your feelings
— beautifully"

400 Medford Avenue,
Patchogue, NY 11772
(516) 475-1779



Flowers delivered anywhere
Weddings and parties
our specialty
Jeffrey Mayer - Lynda Mayer

STAGE DOOR SCHOOL OF Dance

BALLET . POINT . TAP . JAZZ . TAP & BALLET COMBO . LYRICAL . HIP HOP

Fall
Registration
Begins
August
12th

25 PATCHOGUE-YAPHANK RD.
E. PATCHOGUE

Pre-School thru Adults

Family Discounts

Call

654-8858

Artistic Director
Diane Giattino

Celebrating Our
20th Anniversary

South Country Inn



Fine Dining At

Moderate Prices

Extensive Menu

Special Attention

Continental Cuisine
Early Bird Specials

Given to Theater Goers... We'll
get you to the show on time!

Theater Groups

Welcome for Lunch and Dinner

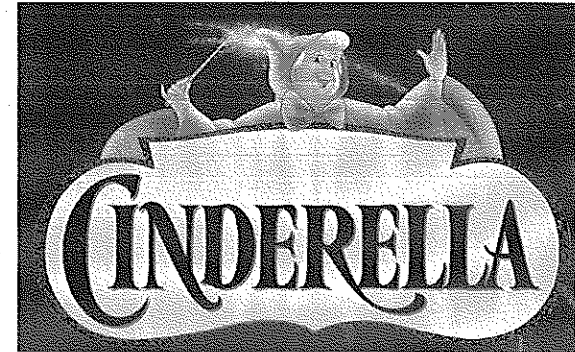
Open
12 Noon
to 11 PM
Daily

668 South Country Road, East Patchogue

Open 6 days **758-1919** Closed Monday

CHILDREN'S THEATRE

Live Musical shows! - Friday and Saturday mornings
at 10:30 a.m. All Seats \$6.00



AUGUST 15 & 16, 22 & 23, 29 & 30



Phone orders - (516) 286-1133



Remaining tickets will be sold at the door, the morning of the show.
Sorry, Children ages 2 and older only. Shows subject to change without notice.



WIRELESS

ALL COUNTY

Security Systems, Inc.

FREE
ESTIMATES

Residential • Commercial

- Burglar Alarms
- Heat Detectors
- Fire
- Central Station
- Freeze Alert
- Medical Alert

(516) 286-8330

All County Home Security Systems

680 South Country Road

East Patchogue, New York 11772

Authorized Distributor For Dynamark • All Guard
Safety Security Products

family melody center

Expert Private Lessons • Popular Music • NYSSMA Music • Expert Repairs on Premises
• Finest Quality Rentals • Guitars • Amps • Drums

Lowest Discount Prices on All Band & Orchestra Instruments

77 South Ocean Avenue, Patchogue, NY 11772

(516) 475-3210

ROE agency inc.
▲ INSURANCE ▲

A Century of Commitment

Walter Roe, Pres. Pat Mankowski, VP
Virginia Flynn, VP Sharon Maler, VP

125 EAST MAIN STREET

PATCHOGUE, NY 11772-0970

(516) 475-4000

FAX (516) 475-7648



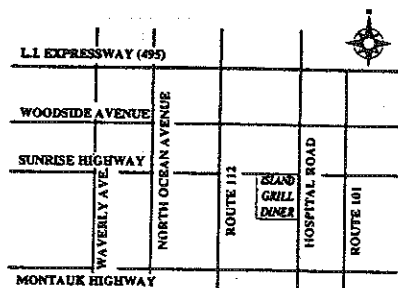
ISLAND GRILL

DINER - RESTAURANT

We specialize in: Seafood . Steaks . Chops
Homemade Baked Goods

OPEN 24 HOURS
INCLUDING ALL HOLIDAYS
Catering & Private Parties

- Special Breakfast Menu
- Sautéed Menu
- Pasta Menu
- Special Island Grill Seafood Combinations
- Complimentary Glass of Wine with Lunch or Dinner
- Special Continental Menu
- 15% Discount for Senior Citizens



140 Hospital Road . Sunrise Highway,
E. Patchogue 516-475-2110 . FAX 516-475-2180

BAY STREET THEATRE

World Premiere

My Good Name

by Arthur Laurents

A savage high comedy about greed, identity and family honor.

From the distinguished author of *GYPSY*, *WEST SIDE STORY*, *THE TURNING POINT* and *THE WAY WE WERE*

June 25 - July 20

World Premiere

Heaven & Earth

A Special Commission
by JOE PINTAURO

Based on the book by Steve Wick

In the spirit of *MEN'S LIVES*, a portrait of an American family, inspired by the rich history of one of our country's oldest communities, the farmers of the North Fork.

July 30 - August 31

Bay Street Theatre

Summer Gala Benefit Bash



Fantasy Auction,
Dinner, Dancing

Call Sonya Horowitz
at 725-0818

Sat., July 12 6:30 pm

ORDER BY PHONE (516) 725-9500

On the Long Wharf, Sag Harbor

Fill out the form and leave it in the box office.

Gateway is making plans for the 1998 summer season.

Please rank the following 22 shows in numerical order.

(#1 - would most like to see, #22 - would least like to see.)

- | | |
|---|---------------------------|
| _____ The Best Little Whorehouse in Texas | _____ My One and Only |
| _____ Damn Yankees | _____ Pirates of Penzance |
| _____ How To Succeed in Business Showboat | _____ Grease |
| _____ State Fair | _____ Rocky Horror Show |
| _____ Meet Me in St. Louis | _____ Sweeney Todd |
| _____ Steel Pier | _____ Hello Dolly |
| _____ Annie | _____ Funny Girl |
| _____ Jesus Christ Superstar | _____ Singin' in the Rain |
| _____ Sophisticated Ladies | _____ Blood Brothers |
| _____ George M! (Yankee Doodle Dandy) | _____ The Odd Couple |
| | _____ I Do I Do |

Other than the above or Phantom Of The Opera, Miss Saigon, Les Misérables, Cats and Rent what other show would you like to see at Gateway next year?

BOX OFFICE HOURS

Monday, Tuesday 12:30 - 5:00pm

Wednesday thru Saturday 12:30 - 9:30pm

Sunday 12:30 - 7:00pm

CREDIT CARD ORDERS

286-1133 (Based on ticket availability)

Mailing Address:

Box 5, Bellport, New York 11713

<http://www.gatewayplayhouse.com>

DO YOU RECEIVE OUR FREE BROCHURE EACH YEAR?

If not, fill out this form and leave it in the box office.

(Please Print)

Name _____

Address _____

Gude
photography

Susann Gude

8 W. Main St.
Patchogue NY
654-8093

**"Kodak Gallery"
Award Winner**