

It's Not A Small World,
We Just Make It Seem That Way.



Over 3,600 flights a day.

Over 250 cities. Over 40 countries.

And over 81,000 people dedicated to bringing
you the world in a way that's uniquely American.

Call your Travel Agent or American at

1-800-433-7300. Or visit us on the

web at www.aa.com

American Airlines
American Eagle

United States Europe Latin America Caribbean Canada Mexico Japan

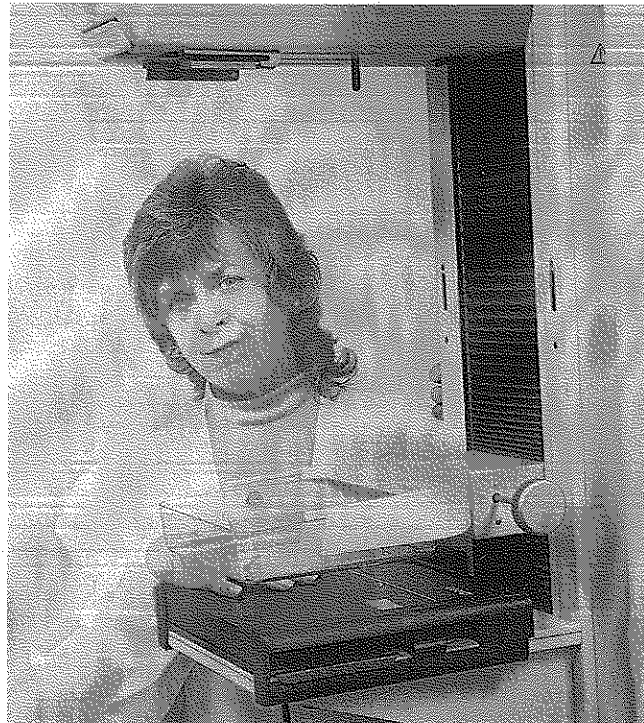
American Airlines and American Eagle are registered trademarks of American Airlines, Inc.
American Eagle is American's regional airline associate.

Gateway Playhouse



PLAYBILL
1998

*For peace of mind...
Take the time*



MAMMOGRAPHY SAVES LIVES

Mammography facility with full ACR accreditation & FDA certification

Women's Health Services 
285 Sills Road • Building 5-6 • Suite E • Patchogue, New York 11772

For more information or to schedule an appointment for
Mammography, Ultrasound or Bone Density Testing
Call (516) 654-7700 or 654-7114

Marilyn Lerner, M.D., D.A.B.R. ~ Ronald S. Hames, M.D., D.A.B.R.
Ira J. Langer, M.D., D.A.B.R. ~ Daniel F. Settle, M.D., D.A.B.R.



WALK ^{FM} 97.5

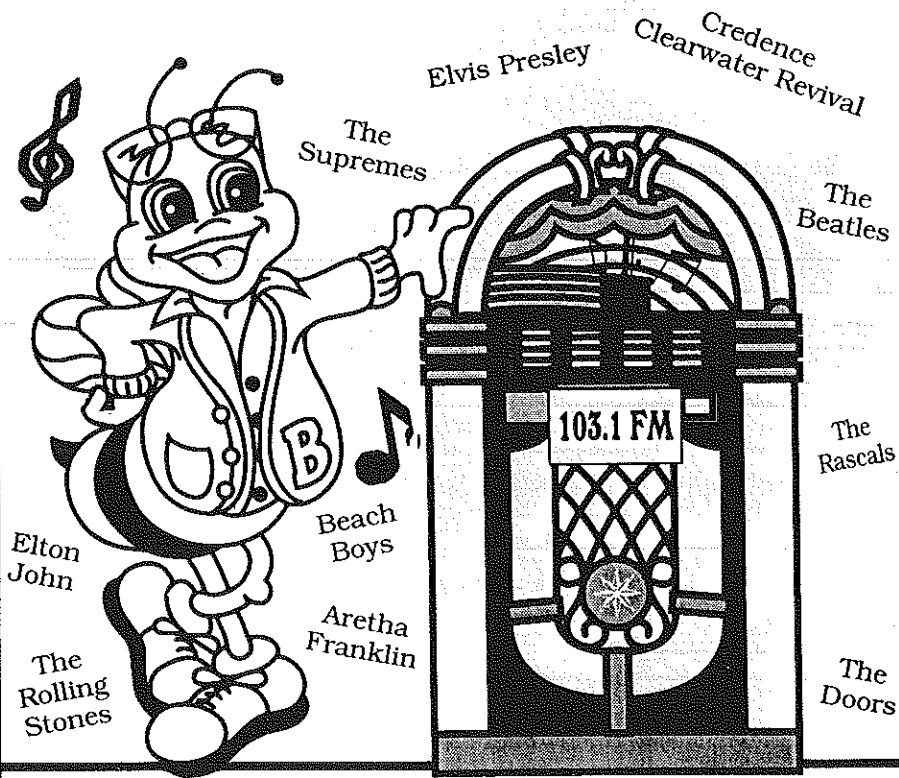


1370 Broadway, the BROADWAY SHOW


sunrise1370am

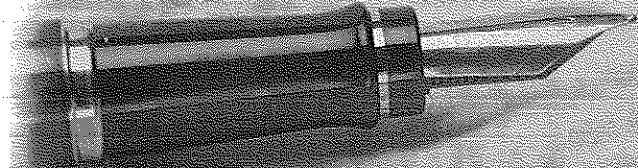
Saturdays from 10am to 12 noon. All your favorite Broadway tunes!

Now THIS is an OLDIES station!



B-103
Long Island's Oldies

For the best
& most oldies!
103.1 FM



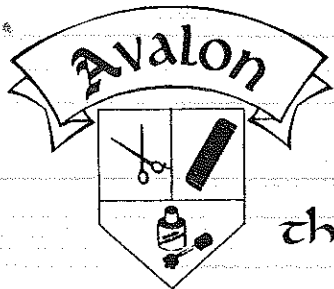
Letter From The Producer

Welcome to the 48th season at Gateway Playhouse! Theater has certainly changed since my grandfather, Harry Pomeran, started putting on shows here in the 1950's. Audiences have become more sophisticated; they expect more if they are to be entertained. New Broadway shows like *The Lion King*, *Jekyll and Hyde* and *High Society* have refined technical stagecraft into a true art form. One day these shows will close on Broadway, but how many local theaters will be able to stage them? Even revivals of well-loved musicals must keep up. It is no longer enough to suggest a setting, like we did with the back end of a ship with a little paddlewheel in our production of *Showboat* in the 1970's. Audiences now expect crashing chandeliers, like we created for our last show, *Phantom*, explosions, pyrotechnics and other special effects.

Here at Gateway, we make every effort to bring you spectacular entertainment. In our next production, *State Fair*, we will be fitting the actual Broadway set to our stage, requiring the professional expertise of both actors and technicians to maximize its effect. There are drops, flying pieces, wagons, and houses that require timing and skill to use properly. Later in the season we will offer *Singin' In The Rain*, and our technical wizards will actually make it rain on stage for you. We are making plans for the holidays too, designing an exciting variety show with holiday elements much like the Radio City Music Hall Christmas Spectacular. It will run from Thanksgiving through early January with special children's matinees.

We pride ourselves on being "Broadway In Your Backyard" and feel we are the only theater on Long Island that can even attempt to stage the creative new Broadway shows to full effect. It's exciting to be able to continue the tradition my grandfather started. Though the scope of the operation has changed, we feel we have the professional resources and know-how to continue to bring complicated shows to Long Island for many years to come. Thank you for your patronage, and enjoy the show.

Paul Allan



Where
beautiful
things happen

Specializing in all phases of hair and nail care and air brushing. Makeup for special occasions. Massage therapy, reflexology, body treatments and facials.

A full service hair and nail studio
for the entire family

- GIFT CERTIFICATES AVAILABLE -

776-0765

117 South Country Road, Bellport, NY 11713

DAILY BOAT RENTALS!

**FISH OR
RELAX**

Just 1 Mile East of Gateway Playhouse
Ski, Fish, Or Just Sun, Enjoy Some Time On The Beautiful Secluded

LONG ISLAND BAY

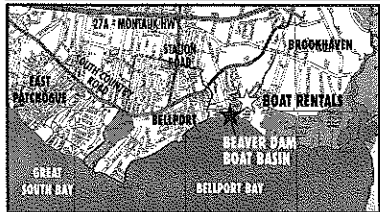


RENT BEFORE YOU BUY!

- Some slips still available
- Full facilities
- Deep water access
- Yearly storage
- 35 ton marine lift
- Certified mechanics
- Full service marina
- Easy access to Fire Island

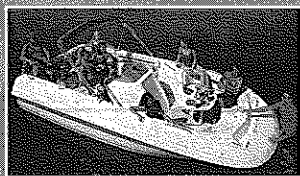
**POWER
BOATS
17'-23'**

CALL TODAY FOR PRICES!



Every
rental
receives
lessons &
directions

**JUST
ONE CALL
RESERVES YOUR
SUMMER OF
BOATING FUN!**



BEAVER DAM BOAT BASIN

FULL SERVICE AND RENTAL MARINA

1-888-610-BOAT

320 S. COUNTRY RD. BELLPORT, L.I.

516-286-0440

Please mention you saw this ad in the Gateway Playbill

Paul Allan and John Hodge

present

JAMES GERTH

in

A FUNNY THING HAPPENED ON THE WAY TO THE FORUM



Book by

BURT SHEVELOVE AND LARRY GELBART

Music and Lyrics By

STEPHEN SONDEHEIM

ORIGINALLY PRODUCED ON BROADWAY

BY HAROLD S. PRINCE

with

**DIMITRI CHRISTY DICK DECAREAU DARIN DePAUL
CHRISTOPHER GARBRECHT CHRISTOPHER MATTHEW
ALET OURY WAYNE SCHERZER CAYTE THORPE**

Associate Producer
JEFF BELLANTE

General Manager
GALE EDWARDS

Casting Director
ROBIN JOY ALLAN

Light Design
ALAN KEEN

Sound Design
MARK CLARK

Additional Choreography
MOLLY BETH WILDE

Wig, Hair & Make-up Design
BILL SHIDELER

Production Stage Manager
GAIL EVE MALATESTA

Company Manager
TIMOTHY WILKINS

Musical Direction

WILLIAM FOSTER McDANIEL

Director

ROBERT ENNIS TUROFF

A FUNNY THING HAPPENED ON THE WAY TO THE FORUM is presented through special arrangement with and all authorized performance materials are supplied by Music Theatre International, 421 West 54th Street, New York, N.Y. 10019

Bellport CHOWDER HOUSE



An Eating and Drinking Tradition

FULL MENU

FULL BAR

Open Daily For Lunch and Dinner
Seven Days A Week

CHAMPAGNE BRUNCH SUNDAY NOON TILL 3 P.M.

Sunday - Thursday till 11:00 p.m. Friday & Saturday till Midnight

**SPECIALIZING IN FRESH LOCAL SEAFOOD
AT AFFORDABLE PRICES**

*Before and After the Show You'll Want to Meet and Eat At
THE CHOWDER HOUSE*

TAKEOUT

CATERING

19 Bellport Lane • Bellport Village • 286-2343

THE CAST

In order of appearance

Prologus, an actor	JAMES GERTH*
The Proteans	PATRICK T. CLAYTON JOEY PANEK CHUCK RAGSDALE
Hero, son of Senex and Domina.....	CHRISTOPHER MATTHEW*
Philla, a virgin	ALET OURY*
Senex, a citizen of Rome	DIMITRI CHRISTY*
Domina, his wife	CAYTE THORPE*
Hysterium, slave to Senex and Domina	WAYNE SCHERZER*
Lycus, a buyer and seller of courtesans	DARIN DePAUL*
Pseudolus, slave to Hero	JAMES GERTH*
Tinfinaula	MOLLY BETH WILDE
Panacea	AMY ELMERS
Vibrata.....	LILLI CALAHAN
Gymnasia	JODI WETZEL
The Geminae, courtesans	ERIN HUNTER, FAITH HUNTER
Eronius, a citizen of Rome.....	DICK DECAREAU*
Miles Gloriosus, a warrior.....	CHRIS GARBRECHT*

Time: Two hundred years before the Christian era, a day in spring.

Place: A street in Rome in front of the houses of Eronius, Senex, and Lycus.

UNDERSTUDIES

(Understudies are never substituted for listed players unless a specific announcement is made at the time of the performance.)

Prologus / Pseudolus Dick Decareau*

MUSICIANS

Musical Director/Conductor William Foster McDaniel
Reeds Donald Moy
Trumpet Jeremy Miloszewicz
Keyboard Wynn Yamami
Percussion..... Rob Murphrey
Bass Rob Braunstein



*Actors employed in this production are members of Actors' Equity Association, the union of Professional Actors and Stage Managers in the United States.



The Musicians employed in this production are members of the American Federation of Musicians.



Directors employed in this production are members of The Society of Stage Directors and Choreographers, Inc.

Bellport Country Club

ONE GREAT PERFORMANCE DESERVES ANOTHER!

Fairway's Cafe

Upstairs at the Bellport Country Club (Elevator Available)
Serving Lunch and Dinner Tues-Sun, 11:30 to Closing
Specializing in Succulent Steaks and Chops

RESERVATIONS
ENSURE WE'LL
GET YOU TO THE
SHOW ON TIME!

COMPLETE
"EARLY BIRD"
SUNSET DINNER
\$13⁹⁵
From
Wed.-Sat. 4pm till 6pm
Sun. 4pm till Closing

Spectacular
Sunday Brunch
BUFFET
\$14⁹⁵ Served
11:30am - 3pm
Sunset Dinners Served
4 pm till Closing

Wednesday
Prime Rib Night
Complete Dinner
\$16⁹⁵
Served 4pm till Closing

Thu., Fri., Sat.
7:30pm till Closing
Lobsters
(Steamed or Broiled)
Vegetable, Crabcake, Potato
\$17⁹⁵

Just 2 minutes West of Gateway

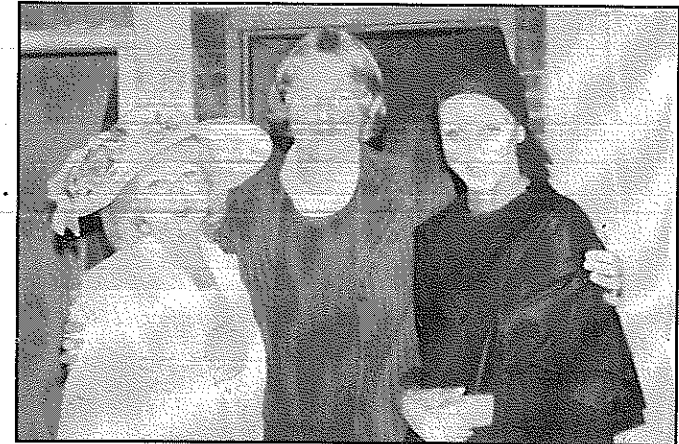


Patio Dining • Gift Certificates Available • Reservations
South Country Road • Bellport Village • (516) 286-4227

GATEWAY HISTORY

25 Years Ago At Gateway

Back in 1973 Gateway Playhouse was more than a theater offering Broadway quality shows. It was also a training ground for performers. Actresses like Wendy Mallick of HBO's *Dream On* and NBC's *Just Shoot Me!* series, spent the summers in Bellport learning their craft as apprentices.



(l to r) Ruth Allan, Craig Brooks and Wendy Mallick

Executive Producer Ruth Allan remembers, "we had three divisions: students 13-17, actors-in-training age 18 and up who had no experience so they paid for classes and room and board, and apprentices who had to audition and paid room and board, but received free training." The students came for four or eight week sessions and had their own shows in the Barn Theater, but actors-in-training and apprentices would get the chance to work on Main Stage productions.

"The apprentices were talented, they had some training from college, and really wanted the experience of getting on the boards. We were doing mostly musicals then. I remember when Wendy first came out, she was in *Zorba*, which was the last show I did on the Main Stage, and she was in *Anything Goes*" said Allan.

About ten apprentices and ten

actors-in-training were accepted each summer. They would live on Gateway's grounds, and took classes in acting, improvisation, speech, movement, and makeup. They even learned something about sewing costumes! Throughout this process they accumulated credits toward Equity status. Then, as today, Main Stage shows featured professional Equity actors in the lead roles, and this also offered an opportunity for apprentices to pick up pointers.

"It was more of a training center, then, but the shows were still wonderful things," said Allan, who still hears from past apprentices like Marcia McCabe and Ken Howard in notes and via e-mail. "Beyond their training they all say the same thing, they will never forget their years at Gateway where they felt like a family."

Tremendous selection of fine jewelry,
period jewelry and collectibles.
Savings on unredeemed merchandise.
Written/Verbal and Estate Appraisals by appointment

W^{m.} J. O'Neill

Serving Manhattan to Montauk
Jewelers and
Collateral Loanbrokers

One East Main Street,
Patchogue
289-9899

Sean and Veronica Cantwell, Kathryn Cantwell

Mayer's
FLOWER COTTAGE

400 Medford Avenue,
Patchogue, NY 11772
(516) 475-1779



"We express your feelings
— beautifully"

Flowers delivered anywhere
Weddings and parties
our specialty

Jeffrey Mayer - Lynda Mayer

Harbor Side Restaurant



"Incomparable Seafood Restaurant"

Complete Lunches from \$7.95

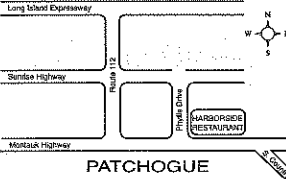
Complete Early Bird Menu
Mon. - Fri. 3:30 p.m. - 5:45 p.m.
Starting at \$11.95
Appetizers from \$4.50
Dinners from \$14.95

Special Rates for
Theatre Groups from 20 to 125
Call for more information.

House Specials
•24oz. Marinated Porterhouse Steak
•Cajun Blackened Swordfish
(Louisiana Style)
•24oz. Boneless Rib Eye Steak
(marinated)
•Whole Stuffed Lobster with Crab Meat
Includes: Salad, Potato & Vegetable
\$15.95

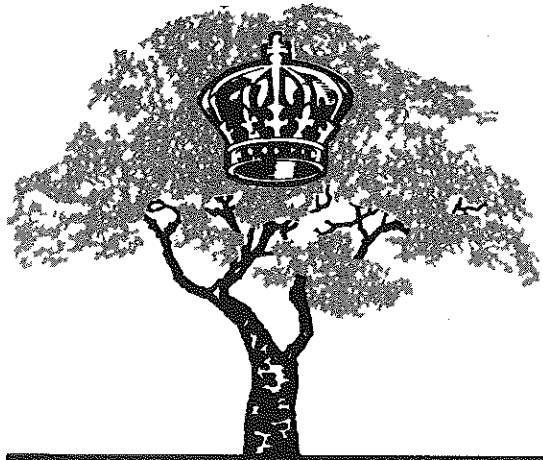
Open 7 Days a Week at 11:30 a.m.
Highly Recommended:
*** *Newsday, Daily News*
NY Post & The Practical Gourmet

Located on the corner of E. Main St. (27A) and Phyllis Dr.



503 E. Main Street, Patchogue, New York (516) 654-9290

PATCHOGUE



ROYAL OAK

Diner - Restaurant

Station Road and Sunrise Highway - Bellport, New York 11713

HOURS: 6:00 A.M. - 2:00 A.M. SEVEN DAYS A WEEK

TEL. (516) 286-5757

MUSICAL NUMBERS

ACT I

Comedy Tonight.....Prologus and The Company
Love I HearHero
FreePseudolus, Hero
Lovely.....Philia, Hero
Pretty Little PicturePseudolus, Hero, Philia
Everybody Ought To Have A Maid.....Senex, Pseudolus, Hysterium, Lycus
I'm CalmHysterium
Impossible.....Senex, Hero
Bring Me My Bride.....Miles, Soldiers, Pseudolus, Courtesans

INTERMISSION

ACT II

That Dirty Old ManDomina
That'll Show HimPhilia
Lovely reprisePseudolus, Hysterium
FuneralMiles, Pseudolus, Mourners
Comedy Tonight - Finale.....The Company

ACT III TAKES PLACE AT

COME
BROWSE



Patchogue Floral's Fantasyland



LARGEST EMPORIUM CATERING TO
THE ESTHETIC PROCUROR OF UNUSUAL HOME DECOR —

Giftware - Art Crafts - Custom Permanent Arrangements

10 Robinson Avenue • East Patchogue • 475-2059

WHO'S WHO (in alphabetical order)

DIMITRI CHRISTY (*Senex*) recently played Everett Baker in *CRAZY FOR YOU* in Switzerland, Herr Schultz in *CABARET* at the Forum Theatre in New Jersey, and The Duke in Shakespeare's *MEASURE FOR MEASURE* for the Worth Street Theatre Company in NYC. Other recent roles include King Saul in a new play, *DAVID DANCES* and The Big Man on Hester Street in *ITALIAN FUNERALS AND OTHER FESTIVE OCCASIONS*. He was also Tevye in *FIDDLER ON THE ROOF*, Max Detweiler in *THE SOUND OF MUSIC* and Mr. Mushnik in *LITTLE SHOP OF HORRORS*. Favorite roles for Dimitri include Zorba in *ZORBA-THE MUSICAL*, Tito Merelli in *LEND ME A TENOR*, Mr. Velasco in *BAREFOOT IN THE PARK*, Joe in *GOD'S FAVORITE* and The Detective in *MURDERED BY THE MOB*. Dimitri is very pleased to be a part of this production and thanks God for all the blessings and opportunities.

LILI CALAHAN (*Vibrato*) Lili is happy to return to Gateway where you may have seen her in *TOMMY*, *CABARET*, and *WEST SIDE STORY*. Some of her credits include the National Tours of *A CHORUS LINE* and *EVITA* and a European tour of *JESUS CHRIST SUPERSTAR*. Regionally she has enjoyed working at Papermill Playhouse, Downtown Cabaret Theatre, and The Westchester Broadway Theatre. Lili has also performed stand-up in New York City at Caroline's Stand-Up New York, Don't Tell Mama's, and at The Comic Strip Live.

PATRICK T. CLAYTON (*Protean*) *FORUM* marks Patrick's debut at Gateway Playhouse. His other credits include: Frank/Andy Lee understudy in *42ND STREET* (National Tour), Cosmo in *SINGIN' IN THE RAIN* (Artpark), and Cole Porter's *ALADDIN* (Asian tour). He recently played the

Coming to Gateway

It's a Grand Night for Singing and Dancing July 22 - August 15

A winning musical from the world's most popular composers for the American stage, Rodgers and Hammerstein. **STATE FAIR** has everything you love in a musical; wonderful melodic songs, rousing dances and a warm-human story for everyone in the family. They gave us the golden age of Broadway musicals, OKLAHOMA, CAROUSEL, THE KING and I, SOUTH PACIFIC, and now, **STATE FAIR** lights up the stage and wins a blue ribbon. Enjoy songs like "It Might As Well Be Spring," "That's For Me," and "It's A Grand Night For Singing." It's a heart-warming and enchanting story of one family's hopes and dreams. Everyone will enjoy a visit to the **STATE FAIR**.



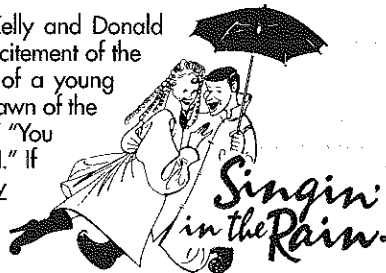
Back Where You Belong...A Musical Treat for the Whole Family!

HELLO, DOLLY!

August 19 - September 5

Everyone's favorite musical, always fresh and winning, set in a happier time when ladies and gents were just that. Life was simple and yet grand. Imagine a time when "the" place to live

was "Yonkers," and the lure of New York City beckoned two young men to enjoy the high life of Broadway. Add our most beloved matchmaker Dolly Levi making everything magical and a score including "Before the Parade Passes By," "Put On Your Sunday Clothes," and of course the classic "Hello Dolly," and you've got a gem of a show.



It's the Golden Age of Hollywood from Silent Films to Grand Musicals

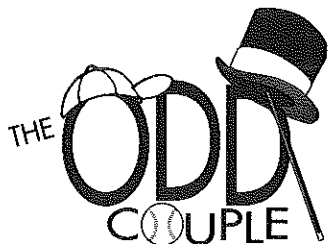
September 9 - September 26

The all-time favorite movie musical that featured Gene Kelly and Donald O'Connor, comes alive on stage, capturing the fun and excitement of the early days in tinsel town. The delightful musical journey of a young starlet who emerges as the toast of Hollywood. It was the dawn of the modern musical with songs you love, like "Good Morning," "You Are My Lucky Star," and of course, "**SINGIN' IN THE RAIN.**" If you're seated in the first few rows bring an umbrella, only kidding!

Top Rated Comedy in the Audience Favorite Poll!

September 30 - October 11

One of Neil Simon's proven comedy successes. Everywhere it plays around the world in different languages, audiences love the antics of its famous leading players. **THE ODD COUPLE** may not be so odd to those of us who have friends or relatives just like the characters on stage. It seems simple for Simon, one of Broadway's most prolific writers, to make real life situations hysterically funny. Winner of three Tony Awards, **THE ODD COUPLE** is an odds on favorite comedy hit.



WHO'S WHO (continued)

role of Tobias Ragg in an Equity Showcase production of **SWEENEY TODD** in New York. Patrick was the recipient of a Theatre Arts Scholarship from the Maryland State College Scholarship Board. He would like to thank his family and friends for their unending love and support.

DICK DECAREAU (*Erronius and Pseudolus / Prologus understudy*) was last seen on this stage playing the befuddled Mayor Shinn in **THE MUSIC MAN** last season. Broadway credits include **GENTLEMEN PREFER BLONDES**, and **RAGGEDY ANN**. Off-Broadway productions include, **MADEMOSIELLE COLOMBE**, **HURRY HURRY HOLLYWOOD**, and **JIMMY VALENTINE**. On the road he played 1,200 performances of **ANNIE!** Not the orphan, but Rooster and other savory characters. Other favorite shows include performances throughout the country; **Parchester** in **ME AND MY GIRL**, **Dexter** in **SINGIN' IN THE RAIN**, **Max** in **THE SOUND OF MUSIC**, **Brian** in **LAUGHTER ON THE 23RD FLOOR**, **Mr. Spencer** in **MERRILY WE ROLL ALONG**, directed by James Lapine, **Bert** in **42ND STREET**, **Albin** in **LA CAGE AUX FOLLES**, and **Moonface** in **ANYTHING GOES**. Television and film credits include numerous commercials, work on the soap **LOVING** on ABC, and the film, **WHISPERS OF WHITE**. The **BLONDES** cast album is on DGR Records. This fall Dick starts rehearsing the new musical, **CAPTAIN'S COURAGEOUS**, opening at the Manhattan Theatre Club in October, directed by Lynn Meadow.


DARIN DePAUL (*Lycus*) was seen last year in Gateway's **MAN OF LA MANCHA** and **ME AND MY GIRL**. Other theater credits include the national tour of **FUNNY GIRL** with Debbie Gibson, **PHANTOM OF THE OPERA**, **OLYMPUS ON MY MIND**, and **GOOD EVENING**. Television appearances include **MIAMI VICE**, **SCI-FI BUZZ**, recurring roles on **USA UP ALL NIGHT** with Gilbert Gottfried and Nickelodeon's **WELCOME FRESHMEN** and commercials for the Florida

Lottery and Bell South Mobility. Darin also spent two years at Walt Disney World's **ADVENTURERS CLUB** and was one of the creative minds behind New York's **JEKYLL AND HYDE CLUB**.

AMY ELERS (*Panacea*) is pleased to be returning to Gateway Playhouse after appearing in last season's **JOSEPH AND THE AMAZING TECHNICOLOR DREAMCOAT** and **DRACULA: A ROCK OPERA** at Gateway's Candlewood Playhouse. Last summer, she danced in the world premiere of Disney's **HERCULES** and then toured Australia as a guest artist with the Gateway Ballet of St. Louis. She has also toured Europe extensively with **MY FAIR LADY** starring Richard Chamberlain and with **JESUS CHRIST SUPERSTAR**. Other credits include: **Dream Laurey** in **OKLAHOMA!**, **Graziella** in **WEST SIDE STORY**, **Snow White** and **Cinderella** in Tokyo Disneyland's **ONE MAN'S DREAM** and national tours of **THE WIZARD OF OZ** and **THE BEST OF BROADWAY. ILYFE**


CHRISTOPHER GARBRECHT (*Miles Gloriosus*) was most recently seen as Miles Gloriosus in **A FUNNY THING HAPPENED ON THE WAY TO THE FORUM** at the Drury Lane-Oakbrook theatre. He has also appeared as **Bill Sykes** on **OLIVER!**, **Joe** in **THE MOST HAPPY FELLA**, **Magaldi** in **EVITA** and **Joe Hardy** in **DAMN YANKEES** all at the Drury Lane-Oakbrook. He played **Count Carl-Magnus** in **A LITTLE NIGHT MUSIC** at The Milwaukee Skylight Opera Theatre, the **Phantom** in the **Yeston/Kopit PHANTOM** at the Candlelight Dinner Theatre in Chicago and in Westchester, NY and the **Policeman** in **BOOK OF THE NIGHT** at the Goodman Theatre. A resident of Chicago, Christopher has also worked with such Chicago companies as **Steppenwolf**, **Remains Theatre** and **The Body Politic**.

JAMES GERTH (*Pseudolus / Prologus*) has been a professional actor for over 25 years. He performed on Broadway in Lincoln Center's **MY FAVORITE YEAR** where he was understudy to Tim



CABOT'S FLORIST

Teleflora



Business accounts welcome

- WEDDINGS
- FUNERALS
- HOUSE PLANTS
- HOSPITAL ARRANGEMENTS

- FRUIT BASKETS
- STUFFED ANIMALS
- BALLOON BOUQUETS
- DRIED AND SILK ARRANGEMENTS

91 Medford Ave., Patchogue
(Rt. 112) South of Sunrise Hwy.
Minutes from Brookhaven Hospital
Next to Robertaccio Funeral Home

Order by Phone
We Accept Major Credit Cards

DAILY DELIVERIES
475-0408

THE BANK OF NEW YORK
LONG ISLAND REGION

24-hour ATM
BELLPORT BANKING
OFFICE LOCATED AT:

32 Station Road
Bellport, New York 11713

Virginia Asero
Assistant Vice President

(516) 286-4200

Member FDIC 1986 The Bank of New York



shop in
BELLPORT VILLAGE

Friendly, Courteous Service
in a Relaxed Congenial Atmosphere



Marilyn Swan REALTY CORP.
An Established Tradition of Service

THREE CONVENIENT LOCATIONS:

12 Bellport Lane, Bellport, NY
286-1222

322 S. Country Rd., E. Patchogue, NY
289-5550

235 Blue Point Ave., Blue Point, NY
363-5550

OPEN 7 DAYS



AFTER THE SHOW STOP BY

AUNT EMMIE'S

FOR SOME

- Homemade Ice Cream • Granita
- Sugar Free Ice Cream • Old Fashioned Candies
- Corona Italian Ices • All Natural Frozen Yogurt
- Italian Cookies • Cappuccino
- Gourmet Coffee and much more.

OUTSIDE TABLES

Just turn left at the light.

8 Bellport Lane • Bellport • NY 11713 • (516) 286-2762

1/2 Price Ice Cream Cone with Ticket Stub

BELLPORT PAINT & WALLPAPER, INC.

COMPLETE PAINT & WALLPAPER SUNDRIES



CABOT STAINS
OLYMPIC PAINT & STAINS
145 South Country Rd.
Bellport, NY 11713

516-286-5850

LYONS FUEL OIL Co. INC.

24 Hr.
Service

est. 1934

Automatic
Delivery

23 Station Road • Bellport, New York 11713
Phone (516) 286-0395 • Fax (516) 286-0396

FAX 516-286-6080 PHONE 516-286-0510

Sentry Hardware

BELLPORT HARDWARE

Pittsburgh Paints • Hardware • Tools & Accessories
Complete Line of Stainless Steel & Grade "B" Nuts & Bolts
Screen & Window Repair
9 Bellport Lane • Bellport, NY 11713

IGA WALLEN'S MARKET

Choice Meats & Poultry • Fresh Produce & Dairy

Quality Service in a Friendly Neighborhood Market

Main Street, Bellport NY 286-0202

**THE GREAT SOUTH BAY
INN**



See The Show And Stay The Night

Also Serving Breakfast to the Public

160 South Country Road
Bellport, NY 11713
(516) 286-8588

Porto Bello
RISTORANTE

FINE ITALIAN CUISINE



**PIZZA
PASTA
PASTRY**

**Capture
the
Moment**

Located at:
14 STATION RD. • BELLPORT, LI

for reservations or take out, call:

286-3300

HOURS:
Mon-Thurs 11am-11pm
Fri, Sat 11am-1am
Sun 11am-11pm



COLEMAN CESSPOOL SERVICE, INC. SCHWAB's Cesspool Cleaning

PRECAST CESSPOOLS INSTALLED

A. COLEMAN

Phone: (516) 475-1733 878-2010

Locally Owned and Operated For Over 50 Years

1 CHAPEL AVENUE
EAST PATCHOGUE, NEW YORK 11772

RELIABLE SERVICE

Bay Street Theatre

World Premiere

Horton Foote's

*A Coffin
in Egypt*

Starring
Glynis Johns

Directed by
Leonard Foglia

June 17 - July 5

NOËL &
GERTIE

Created by
Sheridan Morley

Directed by
Leigh Lawson

Starring
Twiggy

July 15 - Aug. 2

World Premiere

HOUSE

by
Jon Robin Baitz
and
Terrence McNally

Directed by
Joe Mantello

Aug. 12 - Sept. 6

★ ★ Save the date! Summer Gala Benefit Bash ★ ★
Saturday, July 11 Call 725-0818 ★ ★

ORDER BY PHONE (516) 725-9500 ON THE LONG WHARF, SAG HARBOR

WHO'S WHO (continued)

Curry. James starred Off-Broadway in ON THE AIR and MADISON AVENUE. His title roles include THE KING AND I, MAN OF LA MANCHA, SCAPINO, PAL JOEY, JESUS CHRIST SUPERSTAR, and THE MUSIC MAN in which he played Harold Hill for this theatre's production this past season. He has starred as the Pirate King in PIRATES OF PENZANCE, Henry Higgins in MY FAIR LADY and the First Comic in SUGAR BABIES. He has toured the United States and Japan in MY FAIR LADY and the US and Canada as Don Quixote in MAN OF LA MANCHA. Mr. Gerth's picture hangs in the Gallery of Stars at the National Arts Center of Canada in Ottawa at the request of its Director General. James tours tri-state area schools with his educational presentation of MARK TWAIN. James and Karen have just celebrated their 18th wedding anniversary and a happy fifth birthday for their son, Michael.

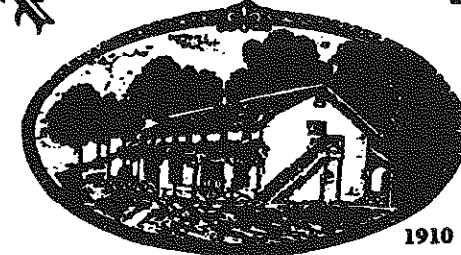
ERIN HUNTER (*Geminae*) is just back from playing Kristine on the National Tour of A CHORUS LINE, and is happy to be here at Gateway Playhouse. Erin has performed with dance companies and in musical theatre productions in NYC and across the US. Favorite roles include Louise in CAROUSEL, Tiger Lily in PETER PAN, and Dream Laurey in OKLAHOMA. Between shows Erin is pursuing a masters

degree in dance at NYU. Thanks to family and Chip for love and support.

FAITH HUNTER (*Geminae*) currently dances with the Young Soon Kim White Wave Dance Company and teaches dance in a public school in New York City. She is excited to appear in FORUM with her twin sister after a long break from doing shows together. Favorite theater credits include Cassie and Kristine/Judy in A CHORUS LINE, Maggie in BRIGADOON, Lorraine in 42ND STREET and the Satin Doll in SOPHISTICATED LADIES. Love and thanks to friends, family and her fiancé.

CHRISTOPHER MATTHEW (*Hero*) is really glad to be back at Gateway Playhouse this season. He was last seen in Gateway's Candlewood Playhouse fall premiere production of DRACULA: A ROCK OPERA, as well as THE MUSIC MAN (Oliver Hix) and JOSEPH AND THE AMAZING TECHNICOLOR DREAMCOAT (Zebulam and understudy for Joseph). Christopher spent the winter studying at Playwright's Horizons with James Calleri and workshopping a new play by Buddy Thomas after premiering his last play THE CRUMBLE ZONE last year. Special thanks to Liz for all her support.

Pine Grove Inn
On The Swan River Inn



Open Weekdays
11:30 A.M.
Saturday
11:30 A.M.
Sunday
12:00 P.M.

Daily
Blackboard
Specials!

1910

EARLY BIRD
SPECIALS

Monday thru Saturday, 3:30 p.m. to
6 p.m., Sunday 12 p.m. to 5 p.m.

LUNCH

Monday thru Saturday,
11:30 a.m. to 3 p.m.

SUNDAY DINNER
SPECIALS

12 p.m. to 9 p.m.

Chapel Ave. & First Street • East Patchogue, NY
475-9843

OPEN WEEKDAYS 11:30 AM • CLOSED TUES. • SAT. 11:30 AM • SUNDAY 12 PM
Directions: LIE to Exit 64, Route 112 South to Montauk Hwy. (27A). Make a left (East) on Montauk Highway to fork in road. Take right side of fork then immediate right onto Chapel Ave.

ACTING AND MUSICAL THEATRE TRAINING

Summer classes
now enrolling!



all levels of acting for all ages thru adult

GATEWAY ACTING SCHOOL

286-9014

LEARN FROM THE PROFESSIONALS!

ALET OURY (*Phyllis*) most recently appeared as Denise Miller in Gershwin's *TIPTOES* of Carnegie Hall. Other Carnegie credits include *LOUISIANA PURCHASE* and *IRA GERSHWIN AT 100*. Other New York credits: *THE BAKER'S WIFE* at the Mint Theatre; *THE HUNCHBACK OF NOTRE DAME* at the American Place; and *L'IL ABNER*, *THE BOYS FROM SYRACUSE*, *SWEET ADELIN* and *ONE TOUCH OF VENUS* at Encores! City Center. Regional: *THE SKIN OF OUR TEETH*, *PASSION*, *FUNNY GIRL*, *THE FANTASTICKS*, *CITY OF ANGELS*, *STOP THE WORLD...*, *PETER PAN*, *IN TROUSERS*, *FALSETTOLAND*, *SUNDAY IN THE PARK WITH GEORGE* and *THE MYSTERY OF EDWIN DROOD*. She can be heard on the following recordings: *LOUISIANA PURCHASE* and *THE BOYS FROM SYRACUSE*, both for DRG, as well as *SONDHEIM AT THE MOVIES*, *CINDERELLA*, *PETER PAN*, *BURT BACHARACH'S FAVORITES*, *LOST IN BOSTON IV*, *UNsung MUSICAL III*, *PRIME TIME MUSICALS*, *NIGHT OF THE HUNTER* (Varese Sarabande) and *DRATI*, *THE CAT*. For my family.

JOEY PANEK (*Protean*) comes to FORUM having just come off the national tour of *THE GOODBYE GIRL*. Very enthusiastic about his return to Gateway and Candlewood, he appeared as a brother in last fall's *JOSEPH AND THE AMAZING TECHNICOLOR DREAMCOAT*. Originally from Syracuse, NY, Joey has enjoyed such roles as Motel in *FIDDLER ON THE ROOF*, Mark in *A CHORUS LINE*, Erik in *GRAND HOTEL*, Mordred in *CAMELOT*, Eugene in *BRIGHTON BEACH MEMOIRS* and Peter in *JESUS CHRIST SUPERSTAR*. Big thanks must go out to Christopher and Michelle, and always to Bob.

CHUCK RAGSDALE (*Protean*) returns to Gateway in FORUM after just completing the North American tour of *BYE BYE BIRDIE* with Troy Donahue, where he performed the role of Albert Peterson 90 times. He was pretty busy last season fighting off vampires (*DRACULA*) and ripping up dreamcoats (*JOSEPH...*) and looks forward to the serious dramatic challenge that

FORUM is certain to offer. Chuck is a North Carolina native and a musical theater alumni of the Cincinnati College-Conservatory of Music ('96). As always, he thanks his family for giving him money and his friends for letting him sleep on their floors.

WAYNE SCHERZER (*Hysterium*) made his Broadway debut in *LES MISERABLES*. He was cast by Terrence McNally and John Tillinger to stand-by for Nathan Lane in the Mark Taper Forum production of *THE LISBON TRAVIATA*. He created the role of Scott in the L.A. premiere of the hit Baby Boomer musical *THE WONDER YEARS*, and appeared in over 1000 performances of Hal Prince's record breaking Los Angeles production of *EVITA*. A two time Drama-Logue Award winner, Wayne has also starred in the L.A. premieres of Albert Inzurato's *GEMINI*, as Herschel, Peter Parnell's *THE RISE AND RISE OF DANIEL ROCKET*, as Daniel, and Tom Stoppard's *ON THE RAZZLE*, as Hupfer. In stock his favorite roles include Nathan, in *GUYS AND DOLLS*, Finch, in *HOW TO SUCCEED IN BUSINESS...* and *Cocky*, in *ROAR OF THE GREASEPAINT...* Wayne was a vocal soloist at Radio City Music Hall and has performed extensively Off-Broadway. On television, he has been a guest on *LAW & ORDER*, *FALCON CREST*, *THE GREATEST AMERICAN HERO*, *GAVILAN*, *THE DOCTORS*, *SANTA BARBARA* and is a veteran of many commercials. Wayne's voice characterizations are featured in the animated film *POUND PUPPIES*.

CAYTE THORPE (*Domina*) trained and toured with the National Shakespeare Company, played Aunt Rose in the Off-Broadway production of *TONY 'N TINA'S WEDDING*, appeared with Deborah Gibson in the national tour of *FUNNY GIRL* and is the proud winner of the United States Post Office's Ethel Merman sound-a-like contest. She was last seen as Lusitania Lucy in the New York premiere of *JUST US BOYS*.

WHO'S WHO (continued)

JODI WETZEL (*Gymnasia*) is very excited to be joining her fellow cast and crew members on this run of FORUM. Hailing from Michigan, she now calls New York City home. Jodi has been seen in the mid-west doing *THE WILL ROGERS FOLLIES*, down south for *ISLAND HOLIDAY*, and across the Pacific dancing aboard the M.S. Asuka last summer, touring Japan, Hong Kong and Russia. Most recently she played the role of Tintinabula in the Ossining Performing Arts production of FORUM. Big thanks to Jimmy Gerth and everyone at Gateway. And one more special thanks to her very best friend, Jim.

MOLLY BETH WILDE (*Tintinabula / Choreographer / Dance Captain*) is thrilled to be back at Candlewood and Gateway after previously performing in *CAROUSEL*. She has been seen in such productions as *BARRY MANILOW PRESENTS COPACABANA*, *THE WILL ROGERS FOLLIES*, *SOME LIKE IT HOT*, *GENTLEMEN PREFER BLONDS*, *MY ONE AND ONLY* and *SUGAR BABIES*. National tour credits include *A FUNNY THING HAPPENED ON THE WAY TO THE FORUM*, *DAMN YANKEES*, and a European tour of *OKLAHOMA!*. In addition to theatre, Molly models and has been seen in commercials. Thanks P.B. Love U Rob.

PAUL ALLAN and JOHN HODGE (*Producers*) have been theatrical partners since 1982. Between them, they have over 40 years of experience, ranging from Broadway and Off-Broadway to Regional Theatre and the last 20 years of Gateway productions. Paul and John worked on the New York City productions of *GROUCHO*, *DIAMONDS*, *JUST SO*, and *PACIFIC OVERTURES*. They have produced National and International tours of *SHENANDOAH*, *SWEET CHARITY*, *ANYTHING GOES*, *SONG AND DANCE*, *CAMELOT*, *A CHORUS LINE*, *AIN'T MISBEHAVIN'*, *SOUTH PACIFIC*, *42ND STREET*, *OLIVER* and last year's highly acclaimed *ME AND MY GIRL*. Paul and John had the distinguished honor of bringing the first American-produced musical to Singapore with their touring production of *THE*

SOUND OF MUSIC. They operate a successful theatrical set rental business with over thirty-five shows in inventory and for the last five years have been operating Gateway's Candlewood Playhouse in New Fairfield, Connecticut. Upcoming endeavors include a remount, by popular demand, of the national tour of *ME AND MY GIRL* and a national tour of their original *HOLIDAY ON ICE SPECTACULAR*.

ROBERT ENNIS TUROFF (*Director*) has directed more than 500 musicals and plays during his dynamic theatrical career. He has directed such top stars as Morgan Fairchild, Van Johnson, Dale Robertson, Dick Van Dyke, Chita Rivera, Bill Hayes, Betty White, Frankie Laine, and opera stars Dorothy Kirsten, Robert Merrill and Richard Tucker. At the City Centre in New York, he directed the world premiere of the Jerome Moross minstrel-opera *GENTLEMEN BE SEATED*, and off-Broadway, he guided the revival of the award-winning *GOLDEN APPLE* and the Jerry Herman musical *MADAME APHRODITE*. He served as resident director of the Theatre Under the Stars, Atlanta; National Opera, Raleigh, NC, for four years; Ford Foundation Opera, New York City; Pocono (PA) Playhouse and Casa Manana Musicals, Ft. Worth. He is author of the musical *HELLO SUCKER* and in 1980, he wrote *CHEERFUL LITTLE EARFUL*, a musical review of the songs of Harry Warren. He is a member of Actor's Equity Association, and a charter member of the Society of Stage Directors and Choreographers and of the American Dinner Theatre Institute. He has directed four World Premiere productions. In 1971, he founded and has served to date as executive director of the Golden Apple Dinner Theatre in Sarasota, Florida, an Equity theatre that has presented 230 productions. He is president of Coastal Theatre Production, Inc., the producing arm of the Golden Apple.

WILLIAM FOSTER McDANIEL (*Musical Director*) first performed at the Gateway Playhouse as the stride pianist in Fats Waller's rollicking

WIRELESS



ALL COUNTY Security Systems, Inc. **FREE ESTIMATES**

Residential • Commercial

- Burglar Alarms
- Heat Detectors
- Fire
- Central Station
- Freeze Alert
- Medical Alert

(516) 286-8330

All County Home Security Systems
680 South Country Road
East Patchogue, New York 11772

Authorized Distributor For Dynamark • All Guard
Safety Security Products

WHO'S WHO (continued)

AIN'T MISBEHAVIN'. For Gateway/Candlewood he has since served as Musical Director for ONCE ON THIS ISLAND, FIDDLER ON THE ROOF, NUNSENSE II, and GUYS AND DOLLS. Recently Mr. McDaniel toured the country in back to back productions of AIN'T MISBEHAVIN' featuring The Pointer Sisters and Martha Reeves and the Vandellas. Mr. McDaniel began his career in musical theatre as pianist-conductor of off-Broadway's long-running THE FANTASTICKS. He has since conducted for Broadway and National Touring companies of TIMBUKTU, BUBBLING BROWN SUGAR and a European production of SOPHISTICATED LADIES. Mr. McDaniel's own compositions have received performances by the Philharmonia of Greensboro, the Savannah Symphony Orchestra, the Mozart Society Orchestra at Harvard and the Brooklyn Philharmonic. He is a graduate of Capital University and Boston University, and was a Fulbright Scholar in Paris.

GAIL EVE MALATESTA (Production Stage Manager) is pleased to be back in Bellport after just finishing her fourth season at Orlando Shakespeare Festival. Her New York credits include: W.P.A. Theatre, Harburg Foundation, American Jewish Theatre, Manhattan Class Co., Musical Theatre Works, Gertrude Stein Repertory, Opening Doors Theatre and Theatre Guild. Her

regional credits include: Philadelphia Drama Guild, Huntington Theatre Company, Downtown Cabaret Theatre, Two River Theatre Company, Merrimack Repertory Theatre, Cambridge Back Alley, Music Theatre North, New London Barn, and Theatre-By-The-Sea. Gail holds a B.F.A. in stage management from Boston University.

ROBIN JOY ALLAN (Casting Director) spent her childhood performing at Gateway Playhouse and after directing, teaching and some producing, began casting in Manhattan in 1985. She worked with several Off-Broadway companies and then spent five years in Los Angeles, where she had the pleasure of working with Ron Howard, Rob Reiner, and Jerry Zucker as the Associate Casting Director on the films PARENTHOOD, WHEN HARRY MET SALLY and GHOST. She led the search for unknowns, discovering Balthazar Getty for the remake of LORD OF THE FLIES. She cast the television pilot of PARENTHOOD in 1989, giving Leonardo DiCaprio his first series-regular role. Ms. Allan now heads up the Gateway Acting School in Bellport and continues her freelance casting career.

ALAN KEEN (Lighting Designer) is happy to return to Gateway after debuting as lighting designer for THE MUSIC MAN, and the HOLIDAY SPECTACULAR ON ICE this past season. Recently, Alan was the Lighting Director for the Hartford Ballet, where he worked on the premiers of RITE OF SPRING, SLEEPING BEAUTY, and THE AMERICAN NUTCRACKER. Off Broadway design credits: A BRIEF HISTORY OF WHITE MUSIC and METEOR GIRL. Other credits include: THE TALES OF HOFFMAN for UConn Opera, THE THREE MUSKETEERS, THREE SISTERS, A CONNECTICUT YANKEE IN KING ARTHUR'S COURT, at Connecticut Repertory Theatre, SISTERS ROSENSWEIG, NUNSENSE II, THE MIKADO, LA CAGE AUX FOLLES, and CALIFORNIA SUITE at the Forestburgh Playhouse.

Old Inlet Inn



The Fine Dining Experience

Dinners from 5:00 p.m.
 Sunday Brunch 12 - 3:00 p.m.
 Sunday Dinner 3 - 9:00 p.m.
 Closed Mondays

Old Fashioned
 Nor' Eastern Lobster Bake
 every Wednesday \$36.00/person

Show Tune Sing-A-Longs on
 Fri. & Sat. with Jim Ahrend and others
 at the Piano 9 - 1:00 a.m.

Patio Dining Season Ticket
 Holders
 10% Discount

108 So. Country Road
 Bellport

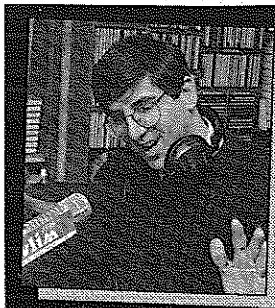
286-2650



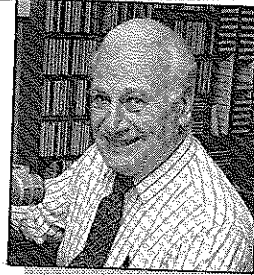
416 so country road
 brookhaven hamlet

516 286 6264

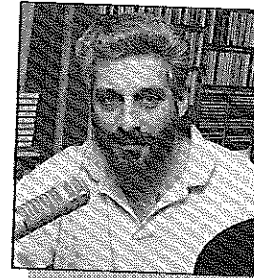
food bar pie shop art bagels ice cream matching dishes



Rich Keith, 5:30-10:00 a.m.



Jack Ellsworth,
 "Memories in Melody"
 10:00 a.m. - Noon



Bob Stern, Noon - 3:00 p.m.
 1-2 BDWY. Hollywood Show



Gil Ellis, 3:00 - 7:00 p.m.

STEREO
 Join Your **wlim**
 Family

Monday - Friday

- Big Bands
- Popular Standards
- Local & Community News
- Daily Prizes

GLENN MILLER

FRANK SINATRA

ROSEMARY CLOONEY

BARBRA STREISAND

NAT KING COLE

DORIS DAY

BENNY GOODMAN

TONY BENNETT

BING CROSBY

wlim 1580 AM • Long Island Music



A Century of Commitment

Walter Roe, Pres. Pat Mankowski, VP
Virginia Flynn, VP Sharon Maler, VP

125 EAST MAIN STREET
PATCHOGUE, NY 11772-0970
(516) 475-4000
FAX (516) 475-7648



THE NEW
Carman's River Inn
Fine Country Dining

"Rated Top 10 Restaurant" - *Newsday* 96

"A Country Hideaway, the Bar
and Restaurant Glows"

Natural Warmth and Charm
Hearty Well-Presented Cuisine
The Food - The People



Monday - Thursday

Lunch 11:30 - 4:00 • Dinner 4:30 - 10:00

Friday

Lunch 11:30 - 4:00 • Dinner 4:00 - 11:00

Saturday

Sunday


Dinner 4:30 - 11:00 Dinner 4:30 - 9:00

Available for Parties



450 Main Street, Yaphank, NY
(516) 345-3302

Easy Access from LIE:
East-Exit 66, West-Exit 67
Call for Reservations and Directions



**Gude
photography**
8 West Main Street
Patchogue
654-8093
Kodak Gallery
Award Winner
March 3, 1998
February 28, 1996

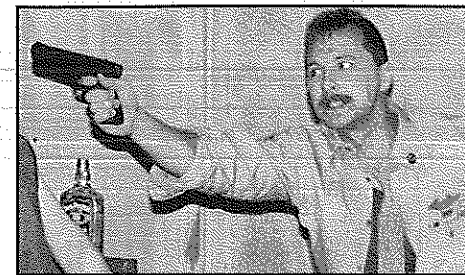
Quality Printing
and Innovative Designs . . .
for all your graphic
and printing needs.



Searles Graphics, Inc.
1457 Montauk Highway
East Patchogue, N.Y. 11772
516-286-2943

Featured Player

James Gerth (Pseudolus) and Gateway Playhouse have long had a mutual admiration society. Over the years, Gerth has appeared at Gateway as the King in *The King And I*, Sergeant Toomey in *Biloxi Blues*, the Top Banana in *Sugar Babies* and Harold Hill in *The Music Man*.



James Gerth in Biloxi Blues


"I think I have played all my favorite roles at Gateway," said Gerth. "There is always so much fun here, always a great cast, you always have good people and a quality product. You work with people you just love." Gerth has long admired Gateway's technical staff, since he has experience himself as production stage manager for a presentation of *Singin' In The Rain* in Elmsford. "It ain't easy to make it rain onstage and make it go away," he said, "We always had a problem there. But these guys at Gateway came up with a great set that worked grandly." Gateway is producing *Singin' In The Rain* again this season, from September 9th - 26th.

When he's not in Bellport, Gerth renovates his home, and travels with

his one-man show *Mark Twain*, which he puts on for tri-state area schools through Visage, his own production company, and has developed more one-man shows on Bobby Kennedy

and FDR. "I don't like to travel too much now because of my son, who will turn five during the run of *Forum*," he said. "I nearly gave up theater entirely just before I did *Music Man* for Gateway, but that production made me ask myself 'how can I give this up?'" Gerth met his wife Karen, an actress, when they worked on a show together in Thomaston, Connecticut; even their cat Rookie is theatrical: while he was appearing in *My Favorite Year* on Broadway at Lincoln Center, lyricist Lynne Ahrens' cat had a litter. Coincidentally, he appeared in *My Favorite Year* with Josh Mostel, whose father Zero originated the role of Pseudolus on Broadway.

Gerth's latest project is to put together a theater ten minutes from his home. "But I don't know how I'm going to tell my partner that I need eight weeks off each summer to appear in more Gateway shows," he laughed.



BALLET . POINT . TAP . JAZZ . TAP & BALLET COMBO . LYRICAL . HIP HOP
PRE-SCHOOL THRU ADULTS • FAMILY DISCOUNTS FALL REGISTRATION
BEGINS JUNE 29
Call
654-8858 *Artistic Director*
25 PATCHOGUE-YAPHANK RD. Diane Giattino
E. PATCHOGUE
Many of our students have appeared on Mainstage and Children's Theatre

CHILDREN'S THEATRE

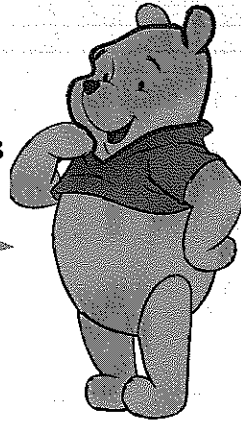
Live Musical shows!

Friday and Saturday mornings at 10:30 a.m.

All Seats \$7.50

Winnie the Pooh

JUNE 26, 27
JULY 3, 10, 11, 17, 18



Pinocchio

JULY 24, 25, 31
AUGUST 1, 7, 8, 14, 15



AUGUST 21, 22, 28, 29
SEPTEMBER 4, 5

Alice in Wonderland

Advance sale general admission tickets for all shows are on sale and this year phone orders will be accepted. Remaining tickets will be sold at the door, the morning of the show.

Sorry, Children ages 2 and older only - No Infants Please.

Shows subject to change without notice.

Volunteers Wanted

Gateway Playhouse

is seeking volunteer ushers to join our Volunteer Corps.

Call 286-0555 for more information

Family Melody Center

Expert Private Lessons • Popular Music • NYSSMA Music
Expert Repairs on Premises • Finest Quality Rentals • Guitars • Amps • Drums

Lowest Discount Prices on All Band & Orchestra Instruments

77 South Ocean Avenue, Patchogue, NY 11772

(516) 475-3210

7 DAYS OF VALUE

MONDAY MADNESS

All Chicken Entrees \$2.00 off
Chicken Wings \$2.95 lb.
Kids Eat for .99¢ (up to \$3.75 Value)
Two Fers on Bottled Beer
all day (Bud, Miller, Molson)
Two Fers 3 - 7 and
from 10 - Closing

TERRIFIC TUESDAY

Buy One Rib Dinner get
second at half price
Kids Eat for .99¢ (up to \$3.75 Value)
Molson Ice Bottles \$2.50
Specials on Pitchers of Beer

WACKY WEDNESDAY

Complete Pasta
Dinner Specials
Includes unlimited salad and
garlic bread and choice of dessert
Two fers all day
(Happy Hour All Day)



A Place for Everyone!

499-59 Sunrise Highway
Patchogue, NY 11772
Phone (516) 654-0700

SOUTH OF THE BORDER THURSDAY

Buy One Fajita and get the second
at half price • Kids taco .99¢
Margarita \$2.50 • Corona \$2.50
Two Fers 3 - 7 and from 10 - Closing

FANTASTIC FRIDAYS

\$2.00 OFF All
Seafood Entrees
Specials on
Pitchers of Beer
Two Fers 3 - 7 and
from 10 - Closing

SUPER SATURDAYS

\$2.00 OFF All
Steak Dinners
Two Fers 3 - 7 and
from 10 - Closing

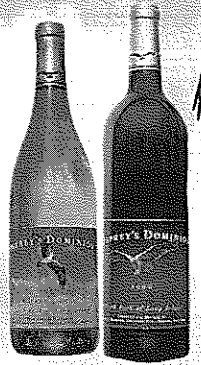
SUNNY SUNDAYS

Get Appetizer FREE
for any two entrees
that cost \$20.00 or more
(Value up to \$5.75)
Two Fers 3 - 7 and
from 10 - Closing



CELEBRATE

With
OSPREY'S DOMINION
Cabernet Sauvignon
 or **Chardonnay**
 here, tonight at the
Gateway Playhouse
 and honor 25 Years of
Long Island Wine
Country!



VISIT

Our tasting room at
 the winery

OSPREY'S DOMINION WINERY
 44075 MAIN ROAD, (RT. 25)
 PECONIC, NY 11958
 PHONE (516)765-6188
 FAX (516)765-1903

E-MAIL WINEMKR@OSPREYSDOMINION.COM



Theatre Etiquette

Listed below are some common sense tips to help make this a more pleasurable experience for you and your fellow theatregoers.

- Please arrive before the scheduled curtain time. This gives you time to park and get to your seats before the show begins. It also allows the show to begin on time. If you do arrive late, you will be asked to stand or sit in the rear of the theatre until there is an appropriate time for you to be seated in your correct seats.
- Please sit only in your assigned seats and remove any hats or accessories that may interfere with the vision of the person sitting behind you.
- Please refrain from talking during the show so as not to disturb your neighbors.
- Please open all candy wrappers before the show begins. The noise from the cellophane is extremely disturbing, not only to your neighbors, but also to the performers on stage.
- Please show the performers the courtesy and respect they deserve by remaining at your seats until the house lights come up. Trying to "beat the traffic" by leaving before the completion of the curtain call is rude and disturbing to those around you enjoying the final moments of the performance.

We sincerely hope this will help you and those around you have a more fulfilling theatre-going experience. Enjoy!

GATEWAY PLAYHOUSE STAFF

Executive Producers.....	Ruth and Stan Allan
Producers	Paul Allan, John Hodge
Associate Producer	Jeff Bellante
General Manager	Gale Edwards
Company Manager	Timothy Wilkins
Director.....	Robert Ennis Turoffi
Musical Director	William Foster McDaniel
Casting Director	Robin Joy Allan
Production Stage Manager	Gail Eve Malatesta
Resident Scenic Designer/Technical Director	Michael Boyer
Sound Designer.....	Mark Clark
Lighting Designer	Alan Keen
Musical Contractor	Dan Yeager
Master Electrician	John Robinson
Shop Foreman	Bobby Edgar
Shop Steward.....	Stacy Cooper
Scenic Artists	Sarah Manuel, Carla Reyes
Prop Mistress.....	Marianne Pate
Costume Coordinator	Cheryl McKee
Wardrobe.....	Catherine LoCurto
Technical Staff	Nova Annable, Liam Walsh, Rob Zylowski
Children's Theatre Director	Dom Ruggiero
Children's Theatre Musical Director	Peter Pece
Box Office Manager.....	Nancy Kana
Group Sales	Nadine Hazard
Box Office Staff	Melissa Grossarth, Gladys Hawkins, Laurie Parr, Kathleen Reksan, Quia-Nicole Rosenthal, Christina Stewart, Kristine Woo, Danielle Wood
House Staff.....	Bob Coupe, Don Harrison, Lynn Nofi, Robert Nofi, Robert Pavanello, Rosemarie Thompson, Theresa Pavanello, Debra Sullivan
Maintenance/Landscaping Supervisor.....	Bob Nofi
Concession Manager/Production Photographer	Mil Kana
Transportation Coordinator	John Schroeder
General Counsel	Ann L. Nowak & Associates

The management and employees of Gateway Playhouse would like to thank our volunteer staff for their continuing contribution to our ongoing success.
 It is much appreciated.

Al Pollog - Head Usher
 Ushers - Rita Wehner, Marie Rachek, Irene Fritz, Cliff Andrea, Jill Andrea, June Budd,
 Doris McHugh, Mickey McGrevey, Chris Millan, Bob Mohrmann, Debbi Mohrmann,
 Caryn Sheridan, Marie Trotto, Patricia Yurdiga, Marian Harrison, Gloria Maslak.

BOX OFFICE HOURS - 7 DAYS -
 Monday - Tuesday 11:00 - 5:00 p.m. • Wednesday thru Saturday 11:00 - 9:30 p.m. • Sunday 12:30 - 7:00 p.m.

PHONE ORDERS 286-1133
 (VISA & MC Only) No checks accepted on day of performance.

Gateway Playhouse Ticket Booth is now open at the Smith Haven Mall
 Located directly across from Cineplex Odeon Cinemas
 Open Monday thru Saturday 10:00 AM to 9:00 PM • Sunday 11:00 AM to 6:00 PM
 Tickets for all performances • Gift Certificates

WARNING - The photographing or sound recording of any performance is strictly prohibited.

Gateway Playhouse offers a wireless sound enhancement system for the hearing impaired. Inquire at the box office for more information.

FIRE NOTICE: The exit indicated by a red light and sign nearest to the seat you occupy, is the shortest route to the outside. In the event of fire or other emergency, please do NOT run. WALK to that Exit. However, under normal circumstances, when leaving the Theatre, use the center rear exit. **SMOKING** is prohibited in the BUILDING, as required by the Suffolk County NO SMOKING Ordinance. Please do not smoke in any area designated "No Smoking." This renders the offenders subject to a fine or imprisonment or both.