

It's Not A Small World,  
We Just Make It Seem That Way.



American  
8000000

Over 3,600 flights a day.

Over 250 cities. Over 40 countries.

And over 81,000 people dedicated to bringing  
you the world in a way that's uniquely American.

Call your Travel Agent or American at

1-800-433-7300. Or visit us on the

web at [www.aa.com](http://www.aa.com)

**American Airlines**  
American Eagle

United States Europe Latin America Caribbean Canada Mexico Japan

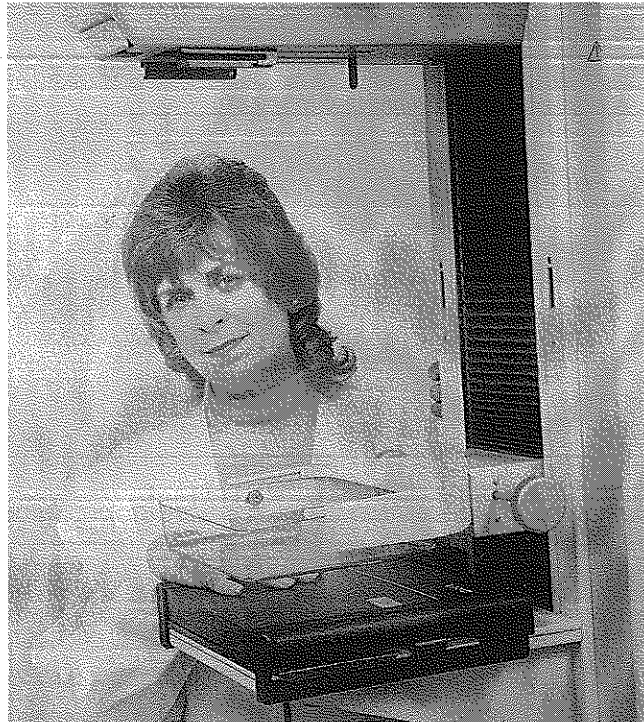
American Airlines and American Eagle are registered trademarks of American Airlines, Inc.  
American Eagle is American's regional airline associate.

# Gateway Playhouse



PLAYBILL  
1998

*For peace of mind...  
Take the time*



**MAMMOGRAPHY SAVES LIVES**

Mammography facility with full ACR accreditation & FDA certification

*W*omen's Health Services  Brookhaven  
285 Sills Road • Building 5-6 • Suite E • Patchogue, New York 11772

For more information or to schedule an appointment for  
Mammography, Ultrasound or Bone Density Testing  
Call (516) 654-7700 or 654-7114

Marilyn Lerner, M.D., D.A.B.R. ~ Ronald S. Hames, M.D., D.A.B.R.  
Ira J. Langer, M.D., D.A.B.R. ~ Daniel F. Settle, M.D., D.A.B.R.



**WALK<sub>FM</sub> 97.5**

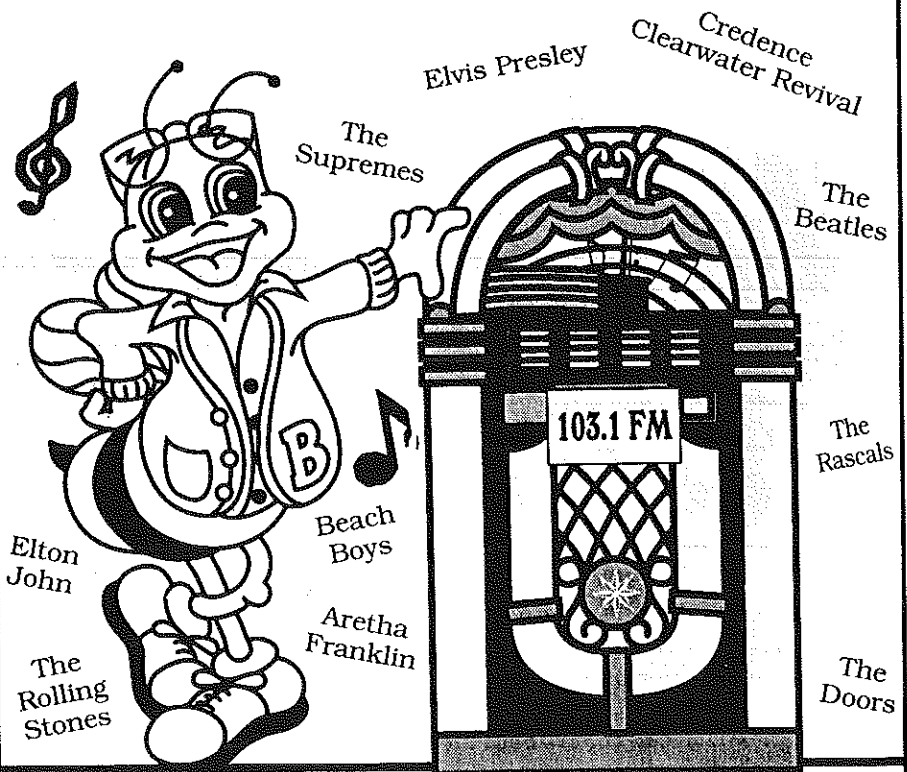


1370 Broadway, the BROADWAY SHOW

  
**sunrise 1370am**

Saturdays from 10am to 12 noon. All your favorite Broadway tunes!

Now THIS is  
an OLDIES  
station!



**B-103** For the best  
Long Island's Oldies & most oldies!  
**103.1 FM**

**Back by Popular Demand**



Gateway Playhouse is pleased to announce the return of

Maury Yeston & Arthur Kopit's  
**Phantom**  
the musical

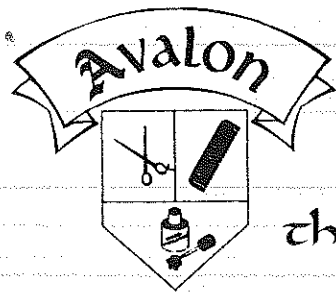
which played to standing room only houses earlier this season.

Steve Parks of Newsday says  
"...emotive lyrics and soaring operatic melodies..."  
"...a guaranteed tear gusher..."

Jeff Sievers of the Long Island Advance says  
"Don't miss the opportunity to be enchanted."

**RETURNING TO HAUNT THE GATEWAY STAGE**  
**OCTOBER 28 - NOVEMBER 8**  
Tickets on Sale Now

\$26	.....	Wed, Oct 28	—	8:00pm	\$26	.....	Wed, Nov 04	—	8:00pm
\$25	.....	Thu, Oct 29	—	2:00pm	\$25	.....	Thu, Nov 05	—	2:00pm
\$26	.....	Thu, Oct 29	—	8:00pm	\$26	.....	Thu, Nov 05	—	8:00pm
\$30	.....	Fri, Oct 30	—	8:30pm	\$30	.....	Fri, Nov 06	—	8:30pm
\$28	.....	Sat, Oct 31	—	5:00pm	\$28	.....	Sat, Nov 07	—	5:00pm
\$30	.....	Sat, Oct 31	—	9:00pm	\$30	.....	Sat, Nov 07	—	9:00pm
\$25	.....	Sun, Nov 01	—	2:00pm	\$25	.....	Sun, Nov 08	—	2:00pm
\$26	.....	Sun, Nov 01	—	7:00pm	\$26	.....	Sun, Nov 08	—	7:00pm



Where  
beautiful  
things happen

Specializing in all phases of hair and nail care and air brushing. Makeup for special occasions. Massage therapy, reflexology, body treatments and facials.

A full service hair and nail studio  
for the entire family

— GIFT CERTIFICATES AVAILABLE —

776-0765

117 South Country Road, Bellport, NY 11713

## DAILY BOAT RENTALS!

**FISH OR  
RELAX**

Just 1 Mile East of Gateway Playhouse  
Ski, Fish, Or Just Sun, Enjoy Some Time On The Beautiful Secluded

### LONG ISLAND BAY

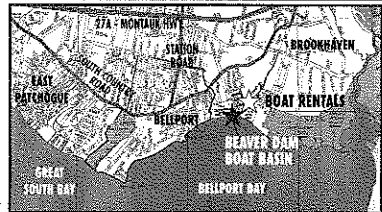


**RENT BEFORE YOU BUY!**

- Some slips still available
- Full facilities
- Deep water access
- Yearly storage
- 35 ton marine lift
- Certified mechanics
- Full service marina
- Easy access to Fire Island

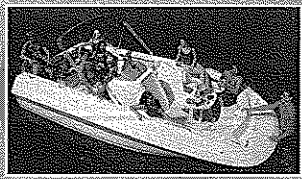
**POWER  
BOATS  
17'-23'**

**CALL TODAY FOR PRICES!**



Every  
rental  
receives  
lessons &  
directions

**JUST  
ONE CALL  
RESERVES YOUR  
SUMMER OF  
BOATING FUN!**



**BEAVER DAM BOAT BASIN**

FULL SERVICE AND RENTAL MARINA

**1-888-610-BOAT**

320 S. COUNTRY RD. BELLPORT, L.I.

**516-286-0440**

Please mention you saw this ad in the Gateway Playbill

Paul Allan and John Hodge

presents

**JAMES YOUNG WHITNEY WEBSTER PAUL CLAUSE,**

In



*Singin'  
in the Rain.*

Based on the MGM Film

(Original Choreography by **GENE KELLY** AND **STANLEY DONEN**)

Screenplay and Adaptation

**BETTY COMDEN AND ADOLPH GREEN**

Songs

**NACIO HERB BROWN  
AND ARTHUR FREED**

Originally Produced on Broadway by Maurice Rosenfield,  
Lois F. Rosenfield, and Cindy Pritzker, Inc.

Music Published by EMI Robbins Catalog Inc.

with

**HEATHER BALLANTYNE**

Associate Producer

**JEFF  
BELLANTE**

Set Design

**JEFF  
MODERER**

Sound Design

**MARK CLARK**

Production Stage Manager

**GAIL EVE MALATESTA**

Musical Direction

**PHYLLIS GESSLER**

**JEROLD GOLDSTEIN**

General Manager

**GALE  
EDWARDS**

Lighting Design

**MICHAEL  
GOTTLIEB**

Wig, Hair & Make-Up Design

**BILL SHIDELER**

Company Manager

**TIMOTHY WILKINS**

Choreographer

**JOSH PRINCE**

Directed by

**ROBERT ENNIS TUROFF**

'SINGIN' IN THE RAIN is presented through special arrangement with and all authorized performance materials are supplied by Music Theatre Int'l, 421 West 54th St., N.Y., N.Y. 10019



# Bellport CHOWDER HOUSE



*An Eating and Drinking Tradition*

**FULL MENU**

**FULL BAR**

Open Daily For Lunch and Dinner  
Seven Days A Week

**CHAMPAGNE BRUNCH SUNDAY NOON TILL 3 P.M.**

Sunday - Thursday till 11:00 p.m. Friday & Saturday till Midnight

**SPECIALIZING IN FRESH LOCAL SEAFOOD  
AT AFFORDABLE PRICES**

*Before and After the Show You'll Want to Meet and Eat At  
THE CHOWDER HOUSE*

**TAKEOUT**

**CATERING**

19 Bellport Lane • Bellport Village • 286-2343

## THE CAST

In order of appearance

Dora Bailey.....	AUDRA HANS
Photographer.....	RICKY CORTEZ*
Zelda Zanders.....	JENNIFER LEE CROWL
Rod.....	CHRISTOPHER MATTHEW*
Olga Mara.....	KAREN SIEBER
R.F. Simpson.....	JEROLD GOLDSTEIN*
Roscoe Dexter.....	ADAM LeGRANT*
Cosmo Brown.....	PAUL CLAUSEN*
Lina Lamont.....	HEATHER BALLANTYNE
Don Lockwood.....	JAMES YOUNG*
Balloon Girl.....	JAMIE LYNN HEBERT
Villain.....	CHRISTOPHER MATTHEW*
Lady-in-Waiting.....	JENNIFER SMITH
Kathy Selden.....	WHITNEY WEBSTER*
Policeman.....	RYAN MIGGE
Butler.....	ERIC OLSON*
1st Assistant Director.....	TOMMY O'DONNELL*
2nd Assistant Director.....	RICKY CORTEZ*
3rd Assistant Director.....	MARK MacKAY LUSK
Hairdresser.....	ASHLEY LISTRO
Wardrobe Mistress.....	KAREN SIEBER
Production Singer.....	ERIC OLSON*
Sid Phillips.....	MARK MacKAY LUSK
Miss Dinsmore.....	AUDRA HANS
Male Diction Teacher.....	JACK HOWELL
Sound Engineer.....	RYAN MIGGE

### ENSEMBLE

RICKY CORTEZ\*, JENNIFER LEE CROWL, AUDRA HANS,  
JAMIE LYNN HEBERT, MARK MacKAY LUSK, ASHLEY LISTRO,  
CHRISTOPHER MATTHEW\*, KAREN SIEBER, RYAN MIGGE,  
TOMMY O'DONNELL\*, ERIC OLSON\*, JENNIFER SMITH

### MUSICIANS

Conductor/Piano.....	PHYLLIS GESSLER
Percussion.....	ROB MURPHREY
Bass.....	ZACK PAGE
Reeds.....	DONALD MOY
Reeds.....	MIKKI RYAN
Reeds.....	JASON METCALF
Violin.....	BARNEY STEVENS
Trumpet.....	JEREMY MILOSZEWICZ
Trumpet.....	DAN YEAGER
Trombone.....	KENICHI NINOMIYA



\* Actors employed in this production are members of Actors' Equity Association,  
the union of Professional Actors and Stage Managers in the United States.



The Musicians employed in this production are members of the American Federation of Musicians.

# Bellport Country Club

ONE GREAT PERFORMANCE DESERVES ANOTHER!

## Fairway's Cafe

Upstairs at the Bellport Country Club (Elevator Available)  
Serving Lunch and Dinner Tues-Sun, 11:30 to Closing  
Specializing in Succulent Steaks and Chops

RESERVATIONS  
ENSURE WE'LL  
GET YOU TO THE  
SHOW ON TIME!

COMPLETE  
"EARLY BIRD"  
SUNSET DINNER  
\$13<sup>95</sup>  
From  
Wed.-Sat. 4pm till 6pm  
Sun. 4pm till Closing

Spectacular  
Sunday Brunch  
BUFFET  
\$14<sup>95</sup>  
Served  
11:30am -3pm  
Sunset Dinners Served  
4 pm till Closing

Wednesday  
Prime Rib Night  
Complete Dinner  
\$16<sup>95</sup>  
Served 4pm till Closing

Thu., Fri., Sat.  
7:30pm till Closing  
Lobsters  
(Steamed or Broiled)  
Vegetable, Crabcake, Potato  
\$17<sup>95</sup>

Just 2 minutes West of Gateway



Patio Dining • Gift Certificates Available • Reservations  
South Country Road • Bellport Village • (516) 286-4227

Tremendous selection of fine jewelry,  
period jewelry and collectibles.  
Savings on unredeemed merchandise.  
Written/Verbal and Estate Appraisals by appointment

W<sup>m.</sup>J. O'Neill

Serving Manhattan to Montauk  
Jewelers and  
Collateral Loanbrokers

One East Main Street,  
Patchogue  
289-9899

Sean and Veronica Cantwell, Kathryn Cantwell

# GATEWAY HISTORY Training



Robin Allan Gillman working with cast of Acting School benefit performance.

Even Robert Duvall needed training at one point in his life. In the 1950's he began his theatrical journey, in college, with the original founders of Gateway: Sally, David and Ruth Pomeran. They were so inspired by their mutual drama professor that they returned to the Pomeran's Gateway Hotel to operate a theater inside their old barn. They developed as actors by performing in, and directing several shows in repertory. They also instructed apprentices, then part of the company, one of which was another famous actor, Gene Hackman. Actors may be "born" but the techniques and skills necessary to be comfortable expressing emotion, to create convincing characters and to move your audience is something learned through training and experience. Robin Allan Gillman, daughter of Ruth Pomeran, knows this first hand. She grew up at Gateway performing and watching hundreds of shows mounted. She also made a successful career for herself in Los Angeles reading thousands of actors when casting major motion pictures, television series and MOVs. She returned home with the desire to reinstate the educational branch of her family's theater which had existed in some form up until the 1980's, when the high caliber of production values on the Main stage became the all encompassing task. Since its inception in 1992, the Gateway Acting School has quickly grown to accommodate

approximately 200 local students. Robin explained, "My primary goal is to offer kids serious professional training. With the industry expanding as it is, a lucrative career in the arts is not an unreachable dream anymore, why not get kids started early so that they are better equipped and can compete with full barrels." This year she was able to do something special for eight graduating seniors that have been studying with her since they were 12 years old. Along with the Playhouse, the Acting School hosted a benefit performance to raise funds for their college education. The unique event showcased the versatile talents of the eight young performers presenting songs and monologues from many genres; from the 1930's tap era, a 1940's radio show, a 50's Beehive review, a Children's Theater spoof to a rock montage at the end of the show. They performed their college entrance audition monologues that had garnered them high acceptance levels and scholarships. Ms. Gillman remarked, "The event was incredible. People that attended are still stopping me to tell me what an effect it had on them. It was meaningful in so many ways. I was proud of the incredible progress the kids made over the years, their self possession, confidence, focus, discipline, their ability to transform from moment to moment. This was a crowning moment for us and the school in that we are accomplishing what we set out to do."

# Harbor Side Restaurant



*"Incomparable Seafood Restaurant"*

Complete Lunches from \$7.95

**Complete Early Bird Menu**  
Mon. - Fri. 3:30 p.m. - 5:45 p.m.  
Starting at \$11.95  
Appetizers from \$4.50  
Dinners from \$14.95

Special Rates for  
Theatre Groups from 20 to 125  
Call for more information.

**House Specials**  
• 24oz. Marinated Porterhouse Steak  
• Cajun Blackened Swordfish  
(Louisiana Style)  
• 24oz. Boneless Rib Eye Steak  
(marinated)  
• Whole Stuffed Lobster with Crab Meat  
Includes: Salad, Potato & Vegetable

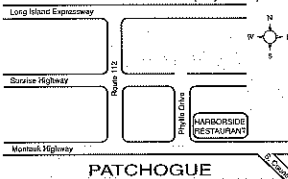
**\$16.95**

Open 7 Days a Week at 11:30 a.m.

Highly Recommended:  
\*\*\* Newsday, Daily News

NY Post & The Practical Gourmet

Located on the corner of E. Main St. (27A) and Phyllis Dr.



503 E. Main Street, Patchogue, New York (516) 654-9290



**ROYAL OAK**

**Diner - Restaurant**

Station Road and Sunrise Highway - Bellport, New York 11713

HOURS: 6:00 A.M. - 2:00 A.M. SEVEN DAYS A WEEK

TEL. (516) 286-5757

## SCENES AND MUSICAL NUMBERS

### ACT I

- SCENE 1 - Outside Graumann's Chinese Theatre**  
"Fit As A Fiddle" ..... Young Don and Young Cosmo
- SCENE 2 - Inside Graumann's Chinese Theatre**
- SCENE 3 - On stage of Graumann's Chinese Theatre**
- Scene 4 - Hollywood Boulevard**  
"You Stepped Out of a Dream" ..... Don and Kathy
- Scene 5 - R.F. Simpson's Mansion**  
"All I Do is Dream of You" ..... Kathy and Girls
- Scene 6 - Monumental Pictures Studio Stage**  
"Make 'em Laugh" ..... Cosmo
- Scene 7 - Set of "The Dueling Cavalier"**
- Scene 8 - Monumental Pictures Studio Stage**  
"Beautiful Girls" ..... Production Tenor and Girls  
"You Are My Lucky Star" ..... Kathy
- Scene 9 - Deserted Sound Stage**  
"You Were Meant for Me" ..... Don and Kathy
- Scene 10 - Vocal Coach's Office**
- Scene 10a - Diction Coach's Office**  
"Moses" ..... Don and Cosmo
- Scene 11 - Monumental Pictures Sound Stage**  
Reprise "Moses" ..... Ensemble
- Scene 12 - Outside the Movie Theatre**
- Scene 12a - Inside the Movie Theatre**
- Scene 12b - Outside the Movie Theatre**
- Scene 13 - Don's House**  
"Good Morning" ..... Don, Cosmo and Kathy
- Scene 14 - Street outside Kathy's House**  
"Singin' in the Rain" ..... Don

### ACT II

- SCENE 1 - R.F. Simpson's Office**
- SCENE 2 - Recording Stage**  
"Would You" ..... Kathy  
Reprise "Would You" ..... Don
- SCENE 3 - Somewhere on the Monumental Studios lot**  
"What's Wrong with Me" ..... Lina
- SCENE 4 - R.F. Simpson's Office**  
"Broadway Melody" ..... Don and Ensemble
- Scene 5 - Outside Graumann's Chinese Theatre**
- Scene 5b - Inside Graumann's Chinese Theatre**
- Scene 5c - Backstage and on stage at Graumann's Chinese Theatre**  
Reprise "Singin' in the Rain" ..... Kathy  
Reprise "You Are My Lucky Star" ..... Don and Kathy  
Reprise "Singin' in the Rain" ..... Company

## ACT III TAKES PLACE AT



*Patchogue Floral's Fantasyland*



LARGEST EMPORIUM CATERING TO  
THE ESTHETIC PROCUROR OF UNUSUAL HOME DECOR —

Giftware - Art Crafts - Custom Permanent Arrangements

10 Robinson Avenue • East Patchogue • 475-2059

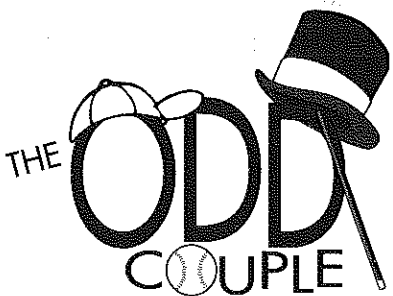
COME  
BROWSE

# Coming to Gateway

Top Rated Comedy in the Audience Favorite Poll!

September 30 - October 11

One of Neil Simon's proven comedy successes. Everywhere it plays around the world

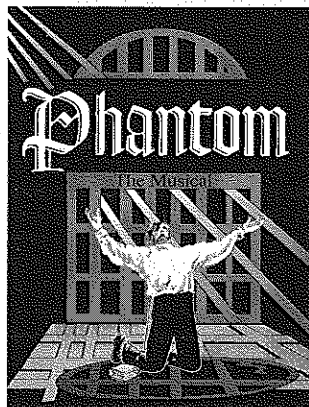


in different languages, audiences love the antics of its famous leading players. **THE ODD COUPLE** may not be so odd to those of us who have friends or relatives just like the characters on stage. It seems simple for Simon, one of Broadway's most prolific writers, to make real life situations hysterically funny. Winner of three Tony Awards, **THE ODD COUPLE** is an odds on favorite comedy hit.

Back By Popular Demand

October 28 - November 8

Our most requested show, and a show to see time and time again. An enchanting and deeply moving musical melodrama starring many of the highly acclaimed original Gateway cast members, back by popular demand. Maury Yeston, composer of Broadway's **TITANIC** and Arthur Kopit create a lavish show with soaring melodies that run through the mesmeric tale of the Phantom of the Opera. A haunting and spellbinding theatrical experience.



WHO'S WHO (in alphabetical order)

**HEATHER BALLANTYNE** (*Lina LaMont*) recently graduated from The American Academy Of Dramatic Arts and performed in their 96/97 Company. She is a founding member of The Windsor Repertory Theater Company and was last seen as Dunyasha in their production of **THE CHERRY ORCHARD**. She can be seen this Fall in a CBS docu-drama entitled **BODY HUMAN 2000** with James Brolin. Thanks for all of your love and support Mum, Dad, Frankie & Junior.

**PAUL CLAUSEN** (*Cosmo*) just finished starring in **PIED-A-TERRE**, directed by Thommie Walsh which will move to an Off-Broadway Theater in the fall. He was seen here last year as Bill Snibson in **ME AND MY GIRL**. Other credits include Munkustrap in **CATS**, Zach in **A CHORUS LINE**, **SUNSET BLVD.**, starring Diahann Carroll, **GEORGE MI** starring Joel Grey and **CAMELOT** starring Robert Goulet. His voice can be heard on commercial voice-overs throughout the U.S. and Canada.

**RICKY CORTEZ** (*Ensemble*) is making his first appearance with the Gateway Playhouse. He recently came off a National Tour and Off-Broadway Production with Theaterworks USA. Ricky has played Regionally as Paul in **A CHORUS LINE** and Frank in **SHOWBOAT**, which he choreographed and directed. Other favorites include: Jesus in **GODSPELL**, Buddy in **COME BLOW YOUR HORN** and the title role in **MYSTERY OF IRMA VEP**.

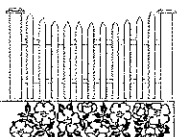
**JENNIFER LEE CROWL** (*Ensemble*) is thrilled to be making her debut at Gateway Playhouse with **SINGIN' IN THE RAIN**. She recently completed a run of **THE WILL ROGERS FOLLIES** at Papermill Playhouse. Other credits include: **THE RADIO CITY CHRISTMAS SPECTACULAR** (Rockette) in Chicago, IL and a National Tour of **WRF**. Love and thanks to family and Chris.

**JEROLD GOLDSTEIN** (*R.F. Simpson*) just concluded a very successful run on Broadway in **HOW TO SUCCEED IN BUSINESS WITHOUT REALLY TRYING** with Matthew

Broderick, Sarah Jessica Parker, and John Stamos. Prior to that, Jerold won Philadelphia's Prestigious Barrymore Award for his performance in **GUN METAL BLUES** at the Wilma Theatre. He has also appeared on Broadway in the musical **AIN'T BROADWAY GRAND**. Following that, he was in the Kennedy Center's production of the long-running comedy **SHEAR MADNESS** and as Chico Marx in **THE COCOANUTS** at The Actors Theatre of Louisville. He spent much of 1992 touring Europe as Bert Barry in **42ND STREET**. Jerold has also performed in the Caribbean, playing Moonface in **ANYTHING GOES**, aboard Norwegian Cruise Lines' **M/S Seaward**. Some of his favorite roles have been Albin in **LA CAGE AUX FOLLES**, Nathan Detroit in **GUYS AND DOLLS**, Ben Franklin in 1776, and Little Chap in **STOP THE WORLD I WANT TO GET OFF**. He recently appeared on NBC's **LAW AND ORDER**. Besides being an actor, Jerold is a writer and composer. His song *Garland of Hope* was performed at the famed Palace Theatre on Broadway to raise funds for BC/EFA. In the past several years New York audiences have seen productions of his musicals **BABALU**, **MY OLDEST FRIEND**, and **MUSIC IS MY FIST** which were written with his collaborator William Squier. In 1991, he was a performer in, and was musical director of, the ABC Late Night Television Experiment **WHERE'S THE PARTY**. B-picture fans might recall seeing Jerold as Freddy Fisher in the film **FAT GUY GOES NUTZOID**, now playing at your local video store.

**AUDRA HANS** (*Dora Bailey/Miss Dinsmore*) is originally from Dallas, Texas and was most recently seen as Miss Lynch in Gateway's production of **GREASE**. Other roles at Gateway include, *Pick-a-Little-Lady* in last summer's **THE MUSIC MAN** and *Lady Battersby* in Candlewood International's tour of **ME & MY GIRL**. Some favorite roles include Mrs. So & So in the Prince Street Players National Tour of **ALADDIN**, Gloria Thorpe in **DAMN YANKEES**, Grace in **ANNIE**, Phyllis Dale in **42ND STREET**, Eve in **APPLETREE** and Cecily

Mayer's  
FLOWER COTTAGE



"We express your feelings  
— beautifully"

Flowers delivered anywhere  
Weddings and parties  
our specialty

Jeffrey Mayer - Lynda Mayer

400 Medford Avenue,  
Patchogue, NY 11772  
(516) 475-1779



WIRELESS



**ALL COUNTY** **FREE ESTIMATES**  
Security Systems, Inc.  
Residential • Commercial

**(516) 286-8330**

All County Home Security Systems  
680 South Country Road  
East Patchogue, New York 11772

Authorized Distributor For Dynamark • All Guard  
Safety Security Products

- Burglar Alarms
- Heat Detectors
- Fire
- Central Station
- Freeze Alert
- Medical Alert



**THE BANK OF NEW YORK**  
LONG ISLAND REGION

24-hour ATM  
BELLPORT BANKING  
OFFICE LOCATED AT:

32 Station Road  
Bellport, New York 11713

Virginia Asero  
Assistant Vice President

**(516) 286-4200**

Member FDIC 1986 The Bank of New York



shop in  
**BELLPORT VILLAGE**

Friendly, Courteous Service  
in a Relaxed Congenial Atmosphere



**Marylou Swan REALTY CORP.**  
*An Established Tradition of Service*

**THREE CONVENIENT LOCATIONS:**

12 Bellport Lane, Bellport, NY  
**286-1222**

322 S. Country Rd., E. Patchogue, NY  
**289-5550**

235 Blue Point Ave., Blue Point, NY  
**363-5550**

**OPEN 7 DAYS**



AFTER THE SHOW STOP BY  
**AUNT EMMIE'S**  
FOR SOME  
Homemade Ice Cream • Granita  
Sugar Free Ice Cream • Old Fashioned Candies  
• Corona Italian Ices • All Natural Frozen Yogurt  
• Italian Cookies • Cappuccino  
• Gourmet Coffee and much more.

**OUTSIDE TABLES** Just turn left at the light

8 Bellport Lane • Bellport • NY 11713 • (516) 286-2762  
1/2 Price Ice Cream Cone with Ticket Stub

**BELLPORT PAINT & WALLPAPER, INC.**  
COMPLETE PAINT & WALLPAPER SUNDRIES




CABOT STAINS  
OLYMPIC PAINT & STAINS  
145 South Country Rd.  
Bellport, NY 11713  
516-286-5850

**LYONS FUEL OIL Co. INC.**  
24 Hr. Service est. 1934 Automatic Delivery


23 Station Road • Bellport, New York 11713  
Phone (516) 286-0395 • Fax (516) 286-0396

FAX 516-286-6080 PHONE 516-286-0510  
Sentry Hardware

**BELLPORT HARDWARE**  
Pittsburgh Paints • Hardware • Tools & Accessories  
Complete Line of *Stainless Steel & Grade "B" Nuts & Bolts*  
*Screen & Window Repair*  
9 Bellport Lane • Bellport, NY 11713




**WALLEN'S MARKET**  
Choice Meats & Poultry • Fresh Produce & Dairy  
*Quality Service in a Friendly Neighborhood Market*  
Main Street, Bellport NY 286-0202



**THE GREAT SOUTH BAY INN**

*See The Show And Stay The Night*



*Also Serving Breakfast to the Public*

160 South Country Road  
Bellport, NY 11713  
(516) 286-8588



**Porto Bello RISTORANTE**

FINE ITALIAN CUISINE



**PIZZA PASTA PASTRY**

**Capture the Moment**

Located at:  
14 STATION RD. • BELLPORT, LI  
for reservations or take out, call:  
**286-3300**

HOURS:  
Mon-Thurs 11am-11pm  
Fri, Sat 11am-1am  
Sun 11am-11pm



**COLEMAN  
CESSPOOL SERVICE, INC.**  
SCHWAB's Cesspool Cleaning

PRECAST CESSPOOLS INSTALLED

A. COLEMAN

Phone: (516) 475-1733 878-2010

Locally Owned and Operated For Over 50 Years

1 CHAPEL AVENUE  
EAST PATCHOGUE, NEW YORK 11772

RELIABLE SERVICE

**Bay Street Theatre**

World Premiere

Horton Foote's

*A Coffin  
in Egypt*

Starring  
Glynis Johns

Directed by  
Leonard Foglia

June 17 - July 5

NOËL &  
GERTIE

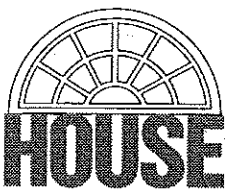
Created by  
Sheridan Morley

Directed by  
Leigh Lawson

Starring  
Twiggy

July 15 - Aug. 2

World Premiere



by  
Jon Robin Baitz  
and  
Terrence McNally

Directed by  
Joe Mantello

Aug. 12 - Sept. 6

\* \* \* Save the date! Summer Gala Benefit Bash \* \* \*  
\* \* \* Saturday, July 11 Call 725-0818 \* \* \*

ORDER BY PHONE (516) 725-9500 ON THE LONG WHARF, SAG HARBOR

**WHO'S WHO (continued)**

Cardew in THE IMPORTANCE OF BEING EARNEST. She is a graduate of KD Studio in Dallas and has also studied at The Royal National Theatre in London.

**JAMIE LYNN HEBERT** (*Ensemble*) is delighted to make her Gateway stage debut. Her recent credits include: 42ND STREET (European Tour), 42ND STREET (Theatre Under the Stars) and THE RADIO CITY CHRISTMAS SPECTACULAR (1997 and 1998 Season). Jamie sends lots of love to her friends and family.

**ADAM LeGRANT** (*Roscoe Dexter*) is delighted to be making his debut with the Gateway Playhouse. Apart from his work in Improv and stand-up comedy at Stand-Up New York, his New York credits include: Wintergreen in OF THEE I SING, Sid in AHI WILDERNESS and Banquo in MACBETH. He appeared in William M. Hoffman's new Play RIGA at the Circle Rep Lab and his solo cabaret act ADAM LeGRANT SINGS THE SONGS OF DESYLVA BROWN & HENDERSON received wide critical praise. Regional and stock credits include: Rooster in ANNIE, Moonface Martin in ANYTHING GOES, Bert Barry in 42ND STREET, and all the character parts in MEET ME IN ST. LOUIS.

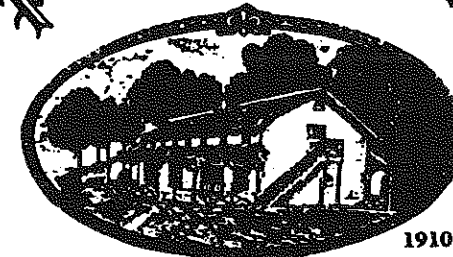
**ASHLEY LISTRO** (Hairdresser/*Ensemble*) has

performed in a variety of shows. She worked as a Rockette, appearing both in the Christmas and Easter shows as well as the Vegas Flamingo Hilton for which she can currently be seen in a commercial. Ashley has appeared in the films VEGAS VACATION (as a Showgirl Dancer) and MARS ATTACKS! Ashley has also worked with Gwen Verdon and Chet Walker on the upcoming FOSSE TRIBUTE. She would like to thank her fiancé Steve and her family for their continuous love and support.

**MARK MACKAY LUSK** (*Ensemble*) recently toured the U.S. in SINGIN' IN THE RAIN and A CHORUS LINE. Originally from Atlanta, GA, Mark earned a B.F.A. in Dance from Webster University in St. Louis, MO. Other professional credits include HELLO DOLLY, CABARET, BEST LITTLE WHOREHOUSE IN TEXAS, and WEST SIDE STORY.

**CHRISTOPHER MATTHEW** (*Rod/Ensemble*) was last seen here in A FUNNY THING HAPPENED ON THE WAY TO THE FORUM as Hero and he's thrilled to be back. He has been a part of Gateway's productions of JOSEPH AND THE AMAZING TECHNICOLOR DREAMCOAT, MUSIC MAN and last fall's premiere production of DRACULA: A ROCK OPERA. This fall Christopher is looking forward to recreating his role of Matt in a pending Off-

*Pine Grove Inn*  
On The Swan River



1910

Open Weekdays

11:30 A.M.

Saturday

11:30 A.M.

Sunday

12:00 P.M.

Daily  
Blackboard  
Specials!

**EARLY BIRD  
SPECIALS**

Monday thru Saturday, 3:30 p.m. to  
6 p.m., Sunday 12 p.m. to 5 p.m.

**LUNCH**

Monday thru Saturday,  
11:30 a.m. to 3 p.m.

**SUNDAY DINNER  
SPECIALS**

12 p.m. to 9 p.m.

Chapel Ave. & First Street • East Patchogue, NY  
475-9843

OPEN WEEKDAYS 11:30 AM • CLOSED TUES. • SAT. 11:30 AM • SUNDAY 12 PM  
Directions: LIE to Exit 64, Route 112 South to Montauk Hwy. (27A). Make a left (East) on Montauk Highway to fork in road. Take right side of fork then immediate right onto Chapel Ave.

# ACTING AND MUSICAL THEATRE TRAINING

Classes now  
enrolling!



all levels of acting for all ages thru adult

## GATEWAY ACTING SCHOOL

286-9014

LEARN FROM THE PROFESSIONALS!

Broadway production of THE CRUMPLE ZONE. Special thanks to the family.

**RYAN MIGGE** (*Ensemble/Dance Captain*) is happy to return to Gateway where he was last seen as Eugene in GREASE, and in last season's ME AND MY GIRL. He comes directly from West Virginia Public Theater where he performed Caleb in Bob Durkin/Mitzi Hamilton's production of SEVEN BRIDES FOR SEVEN BROTHERS, as well as ensemble for SHENANDOAH, KISS ME KATE and 42ND STREET. To Grandma and Bozo: I'll be home soon...Twirl, I love you.

**TOMMY O'DONNELL** (*Ensemble*) was born and raised in Commack, L.I. and is very excited to be making his debut at Gateway. He has toured Europe and the U.S. with LA CAGE AUX FOLLES (Chantal), 42ND STREET and CRAZY FOR YOU. Tommy would like to thank his amazing family and friends especially Marley, Andrea, and Michael. Is this close enough Mom and Dad?

**ERIC OLSON** (*Production Singer/Ensemble*) is happy to return to Gateway, having appeared last season in BRIGADOON. He was recently seen in the Goodspeed Opera House's world premiere of HOUDINI, often slipping straight-jackets in the title role. Other recent credits include: WEST SIDE STORY (Tony), JOSEPH AND THE AMAZING TECHNICOLOR DREAMCOAT (Joseph), and THE PICTURE OF DORIAN GRAY (Dorian). Eric is a graduate of the Trinity Rep Conservatory.

**KAREN SIEBER** (*Olga Mara/Wardrobe Mistress/Ensemble*) is originally from Switzerland. She's very excited to have her American debut here at Gateway! Highlights in Europe: CATS (Rumpleteazer), GREASE, Dusseldorf (Cha-Cha), GODSPELL (Gilmer) and, CABARET.

**JENNIFER SMITH** (*Ensemble*) is proud to be working at Gateway again, after having just

closed STATE FAIR. Credits include: ME AND MY GIRL (National Tour), ANNIE (Korean Tour), 42ND STREET (National Tour), Liesl in SOUND OF MUSIC, Sister Leo in NUNSENSE, SHAKE IT UP (Hersey Park). Thanks and Love to Mom.

**WHITNEY WEBSTER** (*Kathy Selden*) is delighted to be returning to Gateway Playhouse after playing Meg Brockie in 1997's BRIGADOON, and Polly Baker in CRAZY FOR YOU the previous season. She has appeared as Sally Anderson in A CHRISTMAS CAROL at Madison Square Garden, in ANYONE CAN WHISTLE at Carnegie Hall and WEST SIDE STORY SUITE with the NYC Ballet. Other Favorite Roles include Kim Ravenal in SHOWBOAT, Maggie in A CHORUS LINE and Fanny Brice in FUNNY GIRL. Love and Thanks to her "Lucky Star" - Myles.

**JAMES YOUNG** (*Don Lockwood*) Broadway credits include: CRAZY FOR YOU, MY FAIR LADY with Richard Chamberlain, ME AND MY GIRL THE TAP DANCE KID and A CHORUS LINE. Mr. Young has toured, regionalized, and stocked productions of ME AND MY GIRL, SINGIN' IN THE RAIN, WIZARD OF OZ with Phyllis Diller and CRAZY FOR YOU, among others. He also has numerous national and regional commercial credits. Mr. Young is the theater chairman for the Usdan Center for the Creative and Performing Arts, a premiere arts camp for kids. The production for which Mr. Young is most proud are his two daughters Kristina and Alessandra.

**PAUL ALLAN and JOHN HODGE** (*Producers*) have been theatrical partners since 1982. Between them they have over 40 years of experience, ranging from Broadway and Off-Broadway productions to regional theatre and the last 20 years of Gateway productions. They have produced national and international tours of SHENANDOAH, SWEET CHARITY, ANYTHING GOES, SONG AND DANCE, CAMELOT, A CHORUS LINE, AIN'T MISBEHAVIN', SOUTH PACIFIC, 42ND STREET, OLIVER and last year's highly acclaimed ME

AND MY GIRL. Paul and John had the distinguished honor of bringing the first American-produced musical to Singapore with their touring production of THE SOUND OF MUSIC. They operate a successful theatrical set rental business with over thirty-five shows in inventory and for the past five years have been operating Gateway's Candlewood Playhouse in New Fairfield, Connecticut. Upcoming endeavors include a remount, by popular demand, of the national tours of ME AND MY GIRL and a national tour of their original HOLIDAY ON ICE SPECTACULAR.


**ROBERT ENNIS TUROFF** (*Director*) has directed more than 500 musicals and plays during his dynamic theatrical career. He has directed such top stars as Morgan Fairchild, Van Johnson, Dale Robertson, Dick Van Dyke, Chita Rivera, Bill Hayes, Betty White, Frankie Laine, and opera stars Dorothy Kirsten, Robert Merrill and Richard Tucker. At the City Centre in New York, he directed the world premiere of the Jerome Moross minstrel-opera GENTLEMEN BE SEATED, and off-Broadway, he guided the revival of the award-winning GOLDEN APPLE and the Jerry Herman musical MADAME APHRODITE. He served as resident director of the Theatre Under the Stars, Atlanta; National Opera, Raleigh, NC, for four years; Ford Foundation Opera, New York City; Pocono (PA) Playhouse and Casa Manana Musicals, Ft. Worth. He is author of the musical HELLO SUCKER and in 1980, he wrote CHEERFUL LITTLE EARFUL, a musical review of the songs of Harry Warren. He is a member of Actor's Equity Association, and a charter member of the Society of Stage Directors and Choreographers and of the American Dinner Theatre Institute. He has directed four World Premiere productions. In 1971, he founded and has served to date as executive director of the Golden Apple Dinner Theatre in Sarasota, Florida, an Equity theatre that has presented 230 productions.

He is president of Coastal Theatre Production, Inc., the producing arm of the Golden Apple.


**JOSH PRINCE** (*Choreographer*) Josh has previously choreographed productions for the Cincinnati College Conservatory of Music, N.Y.U. (cap 21), Wagon Wheel Theater, Ensemble Theater of Cincinnati, and the Indianapolis Opera; and has assisted choreographers at North Shore Music Theater, Theater Under the Stars, and Pittsburgh C.L.O. He recently choreographed a workshop titled JEEPERS CREEPERS in N.Y.C., and being a performer as well, is currently in rehearsals for LITTLE ME starring Marin Short and Faith Prince at the Roundabout Theater Co.

**ROBIN JOY ALLAN** (*Casting Director*) has been immersed in theater her whole life, performing, musical directing, teaching, directing, producing and most enjoyably, observing many, many great actors and directors work. In 1985 she began her casting career, in New York and then Los Angeles, where she had the pleasure of working with Ron Howard, Rob Reiner, Jerry Zucker and Chris Carter (pre-X-Files!) on several projects as Associate and Casting Director, including: PARENTHOOD, WHEN HARRY MET SALLY and GHOST. She led the search for unknowns, discovering Balhazar Getty for the remake of LORD OF THE FLIES, and cast Leonardo DiCaprio in his first TV series-regular role in 1989's PARENTHOOD. She is dedicated to the educational development of young actors and, along with her husband Lorin, has founded Gateway Acting School for that purpose. Her greatest accomplishment to date is her beautiful daughter, Hayley Lynn.

**GAIL EVE MALATESTA** (*Production Stage Manager*) is pleased to be back in Bellport after just finishing her fourth season at Orlando Shakespeare Festival. Her New York credits include: W.P.A. Theatre, Harburg



**CABOT'S FLORIST**  
Teleflora



Business  
accounts  
welcome

- WEDDINGS
- FUNERALS
- HOUSE PLANTS
- HOSPITAL ARRANGEMENTS

- FRUIT BASKETS
- STUFFED ANIMALS
- BALLOON BOUQUETS
- DRIED AND SILK ARRANGEMENTS

**91 Medford Ave., Patchogue  
(Rt. 112) South of Sunrise Hwy.  
Minutes from Brookhaven Hospital  
Next to Robertaccio Funeral Home**

Order by Phone  
We Accept Major Credit Cards

**DAILY DELIVERIES**  
**475-0408**

WHO'S WHO (continued)

Foundation, American Jewish Theatre, Manhattan Class Co., Musical Theatre Works, Gertrude Stein Repertory, Opening Doors Theatre and Theatre Guild. Her regional credits include: Philadelphia Drama Guild, Huntington Theatre Company, Downtown Cabaret Theatre, Two River Theatre Company, Merrimack Repertory Theatre, Cambridge Back Alley, Music Theatre North, New London Barn, and Theatre-By-The-Sea. Gill holds a B.F.A. in stage management from Boston University.

**JEFF MODEREGER** (Scenic Designer) originally hailing from South Dakota, Mr. Modereger currently resides in the Green Mountain state as newly tenured faculty at the University of Vermont. Jeff's body of work, nearly 400 productions as designer or painter, has been seen across the country in regional theatres, opera companies, national and international tours as well as on and Off-Broadway and the silver screen. His most recent endeavors include the New York revival of COCOANUTS, the national tour of SINGIN' IN THE RAIN, charge painter for the Holocaust Museum tour of REMEMBER THE CHILDREN EXHIBIT: DANIEL'S STORY, production co-ordinator/resident designer for Theatre by the Sea in Rhode Island, AMADEUS for the Vermont Mozart Festival/Vermont Stage Company and

BEAUTY QUEEN OF LENA for the Virginia Stage Company. Jeff has designed 15 productions for the Bridgeport Downtown Cabaret and was the resident set designer for Candlewood Playhouse, 1982-87. Jeff wishes to thank his design assistant Alex and Rocky for their hard work and dedication to the art.

**MICHAEL GOTTLIEB** (Lighting Design) Gateway's Candlewood Playhouse: HOLIDAY SPECTACULAR ON ICE. Off-Broadway: THE LAST SESSION, THE IMPOSTER (starring Austin Pendleton and Callista Flockhart), S.S. Glencairn - FOUR PLAYS OF THE SEA (Willow Cabin) SACRIFICE TO EROS (Theatre at St. Peter's Church) and Penn Jillette's RECREATION. Other work includes over 80 new plays and musicals, opera and dance. His work as an associate designer includes the musicals ZOMBIE PROM and RETURN TO THE FORBIDDEN PLANET, as well as tours for Laurie Anderson and Steve Reich. Mr. Gottlieb designed the architectural lighting for SPY Bar in New York City, and also designs lighting for videotaped segments on NBC's SATURDAY NIGHT LIVE.

**MARILYNN A. WICK** (Costume Designer) has costumed a diverse show selection and works extensively with the nation's professional and regional theatres. Marilynn's credits include the design and production of costumes for the Theatre of the Stars adaptation of THE WILL ROGERS FOLLIES, starring Marla Maples. Marilynn designed new costumes for Loretta Switt in the starring role of MAME for Richard Akins Productions. Marilynn Wick's National Tour credits include EVITA, AIN'T MISBEHAVIN', SHENANDOAH, YOUR ARMS TOO SHORT TO BOX WITH GOD and ME AND MY GIRL. She is particularly honored by the recognition of the custom designs she produced for the Ringling Brothers and Barnum and Bailey Circus for the third consecutive year. Marilynn Wick is the founder and President of Costume World, the second largest national costume rental house with locations in Pennsylvania, Florida and Texas.

## Old Inlet Inn



### The Fine Dining Experience

Dinners from 5:00 p.m.  
 Sunday Brunch 12 - 3:00 p.m.  
 Sunday Dinner 3 - 9:00 p.m.  
 Closed Mondays

Old Fashioned  
 Nor' Eastern Lobster Bake  
 every Wednesday \$36.00/person

Show Tune Sing-A-Longs on  
 Fri. & Sat. with Jim Ahrend and others  
 at the Piano 9 - 1:00 a.m.

Patio Dining      Season Ticket  
 Holders  
 10% Discount

108 So. Country Road  
 Bellport

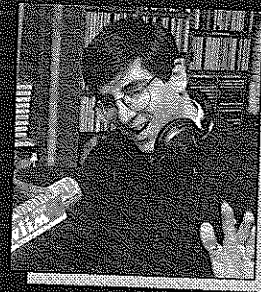
286-2650

## PAINTER'S

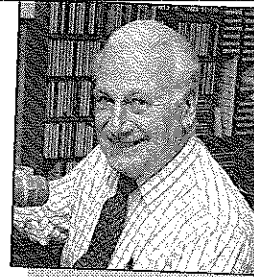
416 so country road  
 brookhaven hamlet

516 286 6264

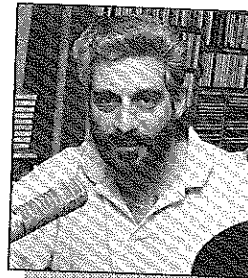
food bar pie shop art bagels ice cream matching dishes



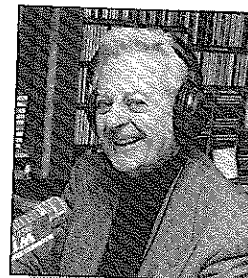
Rich Keith, 5:30-10:00 a.m.



Jack Ellsworth,  
 "Memories in Melody"  
 10:00 a.m. - Noon



Bob Stern, Noon - 3:00 p.m.  
 1-2 BDWY. Hollywood Show



Gil Ellis, 3:00 - 7:00 p.m.

# Join Your **wlim** Family

Monday - Friday

- Big Bands
- Popular Standards
- Local & Community News
- Daily Prizes

GLENN MILLER

FRANK SINATRA

ROSEMARY CLOONEY

BARBRA STREISAND

NAT KING COLE

DORIS DAY

BENNY GOODMAN

TONY BENNETT

BING CROSBY

**wlim** 1580 AM • Long Island Music





A Century of Commitment

Walter Roe, Pres.  
Virginia Flynn, VP

Pat Mankowski, VP  
Sharon Maier, VP

125 EAST MAIN STREET  
PATCHOGUE, NY 11772-0970  
(516) 475-4000  
FAX (516) 475-7648



THE NEW  
*Carman's River Inn*  
Fine Country Dining

"Rated Top 10 Restaurant" - *Newsday* 96

"A Country Hideaway, the Bar  
and Restaurant Glows"

Natural Warmth and Charm  
Hearty Well-Presented Cuisine  
The Food - The People



Monday - Thursday

Lunch 11:30 - 4:00 • Dinner 4:30 - 10:00

Friday

Lunch 11:30 - 4:00 • Dinner 4:00 - 11:00

Saturday

Sunday

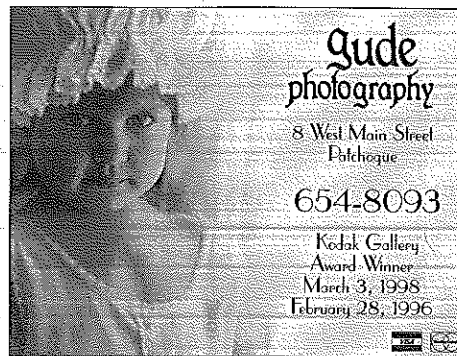
Dinner 4:30 - 11:00    Dinner 4:30 - 9:00

Available for Parties



450 Main Street, Yaphank, NY  
(516) 345-3302

Easy Access from LIE:  
East-Exit 66, West-Exit 67  
Call for Reservations and Directions



*Gude*  
photography

8 West Main Street  
Patchogue

654-8093

Kodak Gallery  
Award-Winner  
March 3, 1998  
February 28, 1996

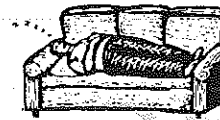


Quality Printing  
and Innovative Designs . . .  
for all your graphic  
and printing needs.



Searles Graphics, Inc.

1457 Montauk Highway  
East Patchogue, N.Y. 11772  
516-286-2943



Wanna add  
some excitement  
to your family's  
holiday traditions?

Get into the spirit of the season with Gateway  
and join us for a special holiday treat.  
Guaranteed fun for the whole family.  
See special program insert for performance  
information, dates, times and prices.



STAGE DOOR *Dance* SCHOOL OF

BALLET . POINT . TAP . JAZZ . TAP & BALLET COMBO . LYRICAL . HIP HOP

PRE-SCHOOL THRU ADULTS • FAMILY DISCOUNTS

FALL REGISTRATION  
BEGINS JUNE 29

Call

*Celebrating our  
24th Anniversary*

**654-8858**  
25 PATCHOGUE-YAPHANK RD.  
E. PATCHOGUE

*Artistic Director*  
Diane Giattino

Many of our students have appeared on Mainstage and Children's Theatre

## Volunteers Needed

### Gateway Playhouse

is seeking volunteer ushers to join our Volunteer Corps.  
Call 286-0555 for more information

## Family Melody Center

Expert Private Lessons • Popular Music • NYSSMA Music  
Expert Repairs on Premises • Finest Quality Rentals • Guitars • Amps • Drums

**Lowest Discount Prices on All Band & Orchestra Instruments**

77 South Ocean Avenue, Patchogue, NY 11772

**(516) 475-3210**

## 7 DAYS OF VALUE

### MONDAY MADNESS

All Chicken Entrees \$2.00 off  
Chicken Wings \$2.95 lb.  
Kids Eat for .99¢ (up to \$3.75 Value)  
Two Fers on Bottled Beer  
all day (Bud, Miller, Molson)  
Two Fers 3 - 7 and  
from 10 - Closing

### TERRIFIC TUESDAY

Buy One Rib Dinner get  
second at half price  
Kids Eat for .99¢ (up to \$3.75 Value)  
Molson Ice Bottles \$2.50  
Specials on Pitchers of Beer

### WACKY WEDNESDAY

Complete Pasta  
Dinner Specials  
Includes unlimited salad and  
garlic bread and choice of dessert  
Two fers all day  
(Happy Hour All Day)



A Place for Everyone!

499-59 Sunrise Highway  
Patchogue, NY 11772  
Phone (516) 654-0700

### SOUTH OF THE BORDER THURSDAY

Buy One Fajita and get the second  
at half price • Kids taco .99¢  
Margarita \$2.50 • Corona \$2.50  
Two Fers 3 - 7 and from 10 - Closing

### FANTASTIC FRIDAYS

\$2.00 OFF All  
Seafood Entrees  
Specials on  
Pitchers of Beer  
Two Fers 3 - 7 and  
from 10 - Closing

### SUPER SATURDAYS

\$2.00 OFF All  
Steak Dinners  
Two Fers 3 - 7 and  
from 10 - Closing

### SUNNY SUNDAYS

Get Appetizer FREE  
for any two entrees  
that cost \$20.00 or more  
(Value up to \$5.75)  
Two Fers 3 - 7 and  
from 10 - Closing

## Spotlight on...

# Box Office and Concession Managers

Everyone at Gateway Playhouse works as hard as they can to provide patrons with top-notch theatrical experiences, but the majority of theatergoers never get to meet the actors, technicians, producers, or musicians. Nancy and Mil Kana, the Box Office Manager and Concession Manager, are the usual liaison between the patron and the theater.

"I started with Mr. Pomeran," said Nancy, who marks her 29th year with Gateway this year. "In those days there were only 10 weeks in the season." Nancy had worked with Harry Pomeran on a church Christmas pageant and he asked her if she would be interested in a summer job selling tickets. "We could do it then with just two girls," remembered Nancy, "and we counted tickets by hand." The current box office was one-third its size then, and a second one for this-performance-only tickets stood where the men's room is now. Nancy has seen generations of patrons hand her their tickets; those who were going to children's theater shows 25 years ago are now attending adult shows and bringing their own children to the children's theater productions.

When computers were brought in five years ago, Nancy at first was skeptical. "I thought, that's it, this is my last year. But little by little it came to me, and everybody was so patient, and the following year I couldn't believe I was teaching other people how to do it!"

As box office manager, Nancy supervises all the employees inside Gateway's box office at the theater and at the Smithaven Mall location. "I train the new employees on the

computers and see if they have the qualities we need. We work out a flexible schedule, and everything is discussed. We don't have someone just answering the phone or just working the window, you have to take care of the whole customer, and that adds variety to the work." Nancy and her staff try their hardest to accommodate patrons with special needs, and Gateway's most loyal theatergoers have become friends. "We have one gentleman who has seen practically every production from the same seat, number AA113," she says, "and we have a couple from Shelter Island who need to sit in A1 and 3 near the exit door so they can scoot out at curtain to make it in time for the ferry back home or they sleep in their car!"

Mil retired from his job in 1983 and began helping out at Gateway shortly thereafter, now he runs the bar and takes production photographs. "Back then we used to mix up orange syrup with water to make that infamous 'theater orange drink,'" he said. "We didn't have the bar as it is now, we had a table with the drinks lined up and a cashier at the end. Now everything, wine, beer and soda, is on tap." Mil is very proud of his staff, "these men are a pleasure, they are hard workers and know exactly what to do, it makes my job easier."

"I see our jobs as making the people smile, and I tell our employees to remember we are almost always the only people that patrons talk to at Gateway," said Nancy, "I think it is important that the people see the spirit of the Allan family through us."

(516) 475-1790 - 1791 Emergency Boarding  
 Fax (516) 475-1807 Service  
 Call 289-1524



GLASS-MIRRORS-PLEXIGLASS-STORE FRONTS  
 AUTO GLASS-INSURANCE CLAIMS

RON HENTHORNE 7 Railroad Ave.  
 Manager Patchogue, NY 11772

516•726•8000



**Ann L. Nowak  
 &  
 Associates**  
 ATTORNEYS AT LAW

"We specialize in helping small  
 businesses and sole proprietors."

- Contracts
- Zoning
- Injuries
- Litigation
- Real Estate
- Bankruptcy

*General Counsel to the  
 Gateway Playhouse*

Deerfield Green, P.O. Box 1290  
 Water Mill, NY 11976-1290

*Swan Bakery*

"Serving the Community Since 1946"

Official Baker to the Gateway Playhouse

Guy J. Gagliano • Robert E. Roode

15 South Country Road  
 East Patchogue, NY 11772  
 Tel. (516) 475-9626



"We're Patient People"

**AMATO FAMILY CHIROPRACTIC**  
 16-2 STATION ROAD • BELLPORT, NY 11713

**516-286-2300**

Infant, Child & Adult Care

Dr. Frank J. Amato

TAKING CARE OF CAST AND CREW AT GATEWAY FOR OVER 10 YEARS

**GATEWAY PLAYHOUSE STAFF**

Executive Producers.....Ruth and Stan Allan  
 Producers .....Paul Allan, John Hodge  
 Associate Producer .....Jeff Beilante  
 General Manager .....Gale Edwards  
 Company Manager .....Timothy Wilkins  
 Director .....Robert Ennis Turoff  
 Choreographer .....Josh Prince  
 Musical Director .....Phyllis Gessler  
 Casting Director .....Robin Joy Allan  
 Production Stage Manager .....Gail Eve McIatesta\*  
 Set Designer .....Oliver Smith  
 Resident Scenic Designer/Technical Director .....Michael Boyer  
 Sound Designer .....Mark Clark  
 Lighting Designer .....Michael Gottlieb  
 Dance Captain .....Ryan Migge  
 Musical Contractor .....Dan Yeager  
 Master Electrician .....John Robinson  
 Shop Foreman .....Bobby Edgar  
 Shop Steward .....Stacy Cooper  
 Prop Mistress .....Marianne Dominy Pate  
 Costume Coordinator .....Cheryl McKee  
 Wardrobe .....Catherine LoCurio, Josephine Funaro  
 Technical Staff .....Liam Walsh, Rob Zylowski, Brian Loesch, Joe Siggia  
 Box Office Manager .....Nancy Kana  
 House Manager .....Laurie Parr  
 Group Sales .....Nadine Hazard  
 Box Office Staff .....Bob Alberti, Gladys Hawkins, Kathleen Rektan,  
 Quia-Nicole Rosenthal, Christina Stewart, Danielle Wood  
 Production Assistant .....Michael Mastroddi  
 House Staff .....Bob Coupe, Don Harrison, Robert Nofi,  
 Robert Pavanello, Mark Mordente, Maria Cuomo, Theresa Pavanello, Debra Sullivan  
 Maintenance/Landscaping Supervisor .....Bob Nofi  
 Concession Manager/Production Photographer .....Mil Kana  
 Transportation Coordinator .....John Schroeder  
 Publicist .....Linda Unger  
 General Counsel .....Ann L. Nowak & Associates

The management and employees of Gateway Playhouse would like to thank our volunteer staff for their continuing contribution to our ongoing success. It is much appreciated.

Al Pollog - Head Usher

Ushers - Rita Wehner, Marie Rachek, Irene Fritz, Cliff Andrea, June Budd, Doris McHugh, Caryn Sheridan, Patricia Yurdiga, Trudi Milian, Marion Harrison, Gloria Maslar, Olga Belz, Toni Novak, Irene Chirco, Betty Gundlach

**BOX OFFICE HOURS - 7 DAYS -**

Monday - Tuesday 11:00 - 5:00 p.m. • Wednesday thru Saturday 11:00 - 9:30 p.m. • Sunday 12:30 - 7:00 p.m.

**PHONE ORDERS 286-1133**

(VISA & MC Only) No checks accepted on day of performance.

Gateway Playhouse Ticket Booth is now open at the Smith Haven Mall  
 Located directly across from Cineplex Odeon Cinemas  
 Open Monday thru Saturday 10:00 AM to 9:00 PM • Sunday 11:00 AM to 6:00 PM  
 Tickets for all performances • Gift Certificates

**WARNING** - The photographing or sound recording of any performance is strictly prohibited.

Gateway Playhouse offers a wireless sound enhancement system for the hearing impaired. Inquire at the box office for more information.

**FIRE NOTICE:** The exit indicated by a red light and sign nearest to the seat you occupy, is the shortest route to the outside. In the event of fire or other emergency, please do NOT run. WALK to that Exit. However, under normal circumstances, when leaving the Theatre, use the center rear exit. SMOKING is prohibited in the BUILDING, as required by the Suffolk County NO SMOKING Ordinance. Please do not smoke in any area designated "No Smoking." This renders the offenders subject to a fine or imprisonment or both.



# CELEBRATE

With

**OSPREY'S DOMINION  
Cabernet Sauvignon  
or Chardonnay**

**here, tonight at the  
Gateway Playhouse  
and honor 25 Years of  
Long Island Wine  
Country!**



# VISIT

**Our tasting room at  
the winery**

**OSPREY'S DOMINION WINERY  
44075 MAIN ROAD, (RT-25)  
PECONIC, NY 11958**

**PHONE (516)765-6188**

**FAX (516)765-1903**

**E-MAIL WINEMRR@OSPREYSDOMINION.COM**



# Theatre Etiquette

Listed below are some common sense tips to help make this a more pleasurable experience for you and your fellow theatregoers.

- Please arrive before the scheduled curtain time. This gives you time to park and get to your seats before the show begins. It also allows the show to begin on time. If you do arrive late, you will be asked to stand or sit in the rear of the theatre until there is an appropriate time for you to be seated in your correct seats.
- Please sit only in your assigned seats and remove any hats or accessories that may interfere with the vision of the person sitting behind you.
- Please refrain from talking during the show so as not to disturb your neighbors.
- Please open all candy wrappers before the show begins. The noise from the cellophane is extremely disturbing, not only to your neighbors, but also to the performers on stage.
- Please show the performers the courtesy and respect they deserve by remaining at your seats until the house lights come up. Trying to "beat the traffic" by leaving before the completion of the curtain call is rude and disturbing to those around you enjoying the final moments of the performance.

We sincerely hope this will help you and those around you have a more fulfilling theatre-going experience. Enjoy!

## SURVEY FOR THE 1999 SEASON

Gateway is making plans for the 1999 summer season and we would like your input. To this end, we would appreciate it if you would take the time to fill out the following survey to assist us in determining the shows for next year. Thank you.

**PLEASE CHECK THE TEN SHOWS YOU WOULD MOST LIKE TO SEE AND NUMBER THEM ONE TO TEN (*number one is the show you would most like to see*).**

- |  |  |
|--|--|
| <input type="checkbox"/> The Best Little Whorehouse in Texas | <input type="checkbox"/> High Society            |
| <input type="checkbox"/> Damn Yankees                        | <input type="checkbox"/> Side Show               |
| <input type="checkbox"/> How to Succeed in Business          | <input type="checkbox"/> The Taming of the Shrew |
| <input type="checkbox"/> Showboat                            | <input type="checkbox"/> Little Shop of Horrors  |
| <input type="checkbox"/> Meet Me In St. Louis                | <input type="checkbox"/> The Life                |
| <input type="checkbox"/> Annie                               | <input type="checkbox"/> A Chorus Line           |
| <input type="checkbox"/> Jesus Christ Superstar              | <input type="checkbox"/> Will Roger's Follies    |
| <input type="checkbox"/> Sophisticated Ladies                | <input type="checkbox"/> Funny Girl              |
| <input type="checkbox"/> George M! (Yankee Doodle Dandy)     | <input type="checkbox"/> Sweeney Todd            |
| <input type="checkbox"/> My One and Only                     | <input type="checkbox"/> Pirates of Penzance     |

**PLEASE CHECK THE TYPE OF SHOW YOU WOULD LIKE TO SEE AT GATEWAY.**

- |  |                                 |
|--|---------------------------------|
| <input type="checkbox"/> Musical Comedy    | <input type="checkbox"/> Comedy |
| <input type="checkbox"/> Musicals/Dramatic | <input type="checkbox"/> Drama  |
| <input type="checkbox"/> Shakespeare       |                                 |

**PLEASE CHECK THE APPROPRIATE CATEGORIES BELOW.**

- I am:
- |  |   |
|--|---|
| <input type="checkbox"/> Under 25 yrs. old | <input type="checkbox"/> 46 - 55 yrs. old |
| <input type="checkbox"/> 25 - 35 yrs. old  | <input type="checkbox"/> 56 - 65 yrs. old |
| <input type="checkbox"/> 36 - 45 yrs. old  | <input type="checkbox"/> Over 65 yrs. old |
| <input type="checkbox"/> Male              | <input type="checkbox"/> Female           |

**OTHER THAN THE SHOWS LISTED ABOVE AND CURRENTLY RUNNING BROADWAY SHOWS WHAT SHOW WOULD YOU LIKE TO SEE AT GATEWAY NEXT YEAR?**

---



---



---