



Bringing New York Closer To The World.

American loves New York. And we show it every day with over 200 flights from six tri-state area airports to nearly 260 cities in 40 countries worldwide. For more information call your Travel Agent or American at 1-800-433-7300, or visit us on the web at www.americanair.com

American Airlines
American Eagle

LA GUARDIA • JFK • NEWARK • LONG ISLAND MACARTHUR • WHITE PLAINS • NEWBURGH STEWART

American Airlines and American Eagle are registered trademarks of American Airlines, Inc. American Eagle is American's regional airline associate.



PATCHOGUE THEATER

for the

PERFORMING ARTS



FALL-WINTER 1999

Gateway Performing Arts



*For peace of mind...
Take the time*



MAMMOGRAPHY SAVES LIVES

Mammography facility with full ACR accreditation & FDA certification

Brookhaven
Women's Health Services

285 Sills Road • Building 5-6 • Suite E • Patchogue, New York 11772

For more information or to schedule an appointment for
Mammography, Ultrasound or Bone Density Testing
Call (516) 654-7700 or 654-7114

Marilyn Lerner, M.D., D.A.B.R. ~ Ronald S. Harnes, M.D., D.A.B.R.
Ira J. Langer, M.D., D.A.B.R. ~ Daniel F. Settle, M.D., D.A.B.R.

LOUIS XVI

Open for Lunch & Dinner
Tuesday through Sunday

Reservations
Recommended



Voted the No. 1 restaurant overall on LI, as well as No. 1 for Decor – devotees swear it could rival “the Palace of Versailles” – this “extravagant,” “elegant” and “exquisite” “crown jewel” boasts “gorgeous views” of Great South Bay from its “beautiful setting on the water” in Patchogue; indulge in “extraordinary,” “imaginative” New French cuisine “magnificently presented” by an “impeccable” staff; dip into the “kids’ college fund” or “mortgage the house” if you must, but it’s “worth every franc” for such an “incredible dining experience.”

– Zagat Survey 2000 26 28 25 \$57

600 South Ocean Avenue • Patchogue, 654-8970



“Incomparable Seafood Restaurant”

Complete Lunches from \$7.95

Complete Early Bird Menu
Mon. - Fri. 3:30 p.m. - 5:45 p.m.
Starting at \$11.95
Appetizers from \$4.50
Dinners from \$14.95

Special Rates for
Theatre Groups from 20 to 125
Call for more information.

House Specials

- 24oz. Marinated Porterhouse Steak
 - Cajun Blackened Swordfish (Louisiana Style)
 - 24oz. Boneless Rib Eye Steak (marinated)
 - Whole Stuffed Lobster with Crab Meat
- Includes: Salad, Potato & Vegetable
Starting at **\$16.95**

All Major Credit Cards Accepted.
Complete dinners everyday.

Open 7 Days a Week at 11:30 a.m.
Highly Recommended:
... Newsday, Daily News
NY Post & The Practical Gourmet

Two-Morrow's

Whether you're going out to lunch or out for the evening why not enjoy an atmosphere that's nice to be in anytime...

**Burgers, Sandwiches,
Chicken, Soups, Salads**

You've Gone Past Many Times...
Stop In... The Fireplace is On!

300 East Main St., Patchogue
300' East of Rte. 112 on the south side
475-6335



NORTH FORK BANK™

The bank that hasn't forgotten what personal service is all about. That thinks of its customers as people, not account numbers. And gives its branches the power to do for you what you need a bank to do. We're North Fork Bank, and we have the kind of products and services and a way of doing business that you've been looking for.

116 EAST MAIN STREET, PATCHOGUE • (516) 289-3200
62 SOUTH OCEAN AVENUE, PATCHOGUE (Drive-up Only)
Member FDIC



COLEMAN
CESSPOOL SERVICE, INC.

ART COLEMAN
475-1733 • 878-2010

**Family Owned and Operated
For Over 50 Years**

1 Chapel Avenue, East Patchogue, New York 11772

- Dedicated to Honest & Reliable Service •
- Precast Cesspools installed •
- Portable Toilet Rentals •

With The Approach Of The New Millennium
Look For A Bigger & Better

SWEZEY'S

In Our New Location At The Old Lace Mill Site
On W. Main Street

OPENING SPRING 2000

We May Look Different But We're Still Swezey's...
Offering You "Our Valued Customers" Selection, The Best Savings
& The Customer Service That Have Been Our Trademark
For Over 105 Years!

Enjoy this
Bonus Coupon
with our gratitude

extra **15%**
off

Any 1 Item In The Store*

*excludes best buys, cosmetics, fragrances, gift certificates, Scouts, Levi's, vacuums, small appliances, collectibles, Beanie Babies, Easy Spirit shoes, Esprit, Calvin Klein, London Fog, Tommy Hilfinger, watches, Crosskill, designer bedding, Fieldcrest, Stearns & Foster, Sealy Sleepers, broadloom & special orders. Cannot be combined with any other coupons or discount offers or used on previous purchases or layaways.

Valid thru Jan. 10, 2000

10386



Swezey's

Patchogue

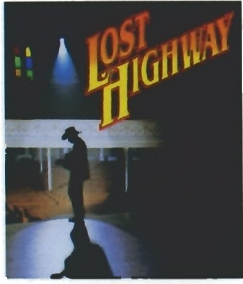
1 W. Main Street, 475-0280

• Open 7 Days A Week &
Most Evenings.

Other Locations:

Riverhead, E. Setauket &
W. Babylon

OUR 1999 FALL - WINTER SEASON



November 3

LOST HIGHWAY "The Music and Legend of Hank Williams"
Straight from its National Tour, JASON PETTY gives a hauntingly authentic performance as Hank Williams, in this musical biography/revue of the country music legend. Though idolized by his fans, he was incredibly lonely. On the scene for only six years, Williams made an indelible mark on country music with such hits as "I'm So Lonesome I Could Cry", "Hey Good Lookin'" and "Honky Tonk Blues".

November 9

Neil Simon's **LAST OF THE RED HOT LOVERS**

Starring GARY BURGHOFF, "Radar" from TV's M*A*S*H

A special one night engagement! Neil Simon, America's funniest playwright brings us the hilarious story of a mild-mannered, middle-aged man who yearns for one big fling. Emmy award winner Gary Burghoff stars as Barney Cashman, a decent fellow who just can't succeed in sinning. One of Neil Simon's best!



November 17 - 28

THE WIZARD OF OZ

Join us for this family classic, live on stage. Relive the adventures of Dorothy and her dog Toto as they travel the Yellow Brick Road with the Tinman, Scarecrow and Cowardly Lion. Along the way they meet other characters of Oz like the Wicked Witch of the West and, of course, the Wizard. A musical treat for the entire family.

THE
WIZARD
OF OZ



December 8-19

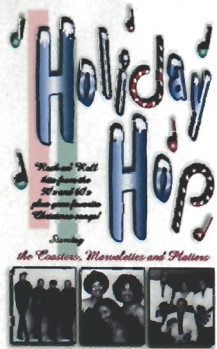
HERE'S LOVE The "Miracle On 34th Street" Musical

When we think of the Holiday Season how can we not conjure up one of our most memorable childhood movie images, Santa Claus on trial! *Miracle on 34th Street*, the classic film, is now brought to the stage. A great story of faith and hope, accompanied by a tuneful score by Meredith Wilson, composer of "The Music Man." It had The Associated Press raving, "A happy, happy show for everybody. A shiny package of music and mirth."



December 20 & 21
HOLIDAY HOP!

Hop back in time and listen to the music that helped define rock and roll and doo-wop of the 50's and early 60's. Join us for this unforgettable Christmas concert and hear "Please Mr. Postman", "Smoke Gets In Your Eyes" and "Poison Ivy" as The Platters, The Coasters and The Marvelettes sing their biggest hits and your favorite holiday songs. For two nights only!



December 28 - January 1
TWIST AND SHOUT!

Spend your New Year's Eve with us and relive the music and excitement of the Beatles. A special multi-media presentation with live music of the Fab-Four brings in the new millennium with a bang! Call for details of our special New Year's Eve celebration!



All performances at The Patchogue Theater for the Performing Arts
For tickets call 516-286-1133

From The Producers

Welcome to the new Patchogue Theater! We are very excited to be here in the Village of Patchogue and to be involved in the renovation of this beautiful and historic building. We will, however, still be operating Gateway Playhouse in Bellport, which will celebrate its 50th birthday next season. By utilizing both theatres, we feel we will be able to bring you the best in diverse, theatrical entertainment.

Producing here at Patchogue Theater allows us to offer you a wide range of entertainment year round. We can accommodate touring shows that are too large for our Theater in Bellport, as well as shows featuring big name performers which the Patchogue Theater's 1250 seat capacity allows us to afford. In Bellport we will continue to produce the high quality shows you've become accustomed to in the spring and summer months.

We are very excited by our line-up through the end of the year. For Halloween, we are pleased to present John Astin, of The Addams Family television series, in *Once Upon A Midnight*, a one-man show about the life of writer Edgar Allan Poe. On November 3, we bring you *Lost Highway: The Music And Legend Of Hank Williams* straight from its national tour. On November 9, Gary Burghoff, "Radar" from TV's M*A*S*H will star in Neil Simon's hilarious play, *Last of the Red Hot Lovers*.

Kids of all ages will love *The Wizard Of Oz*, a Gateway Playhouse production at Patchogue Theater from November 17-28 featuring real flying witches and flying monkeys. Most schools are closed for Thanksgiving Recess so we have scheduled extra matinees for your family.

Over the Christmas holidays *Here's Love*, *The "Miracle on 34th Street" Musical*, based on the classic movie starring Natalie Wood, will be performed December 8-19. We are also excited to bring to you *Holiday Hop!*, a concert featuring three of your favorite groups from early Rock and Roll and Doo-Wop. For two nights only on December 20 & 21, The Coasters, The Platters and The Marvelettes will be singing all their hits and their favorite Christmas songs.

Finally, ring in the Millennium with us as we present *Twist And Shout* from December 28 - January 1. This is a special multi-media presentation recreating the music and excitement of the Beatles - and a special New Year's Eve package is planned!

Thanks again for joining us in the excitement of opening this wonderful new theater. We look forward to bringing you more exciting and unique theatrical and concert experiences throughout the year 2000. Keep a lookout for the announcement of our Spring season here in Patchogue and for our 50th Anniversary Season at Gateway Playhouse in Bellport. Enjoy the show!

Paul Allan and John Hodge

Bravo



Quality Printing and Innovative Designs...
for all your graphic and printing needs.

SEARLES GRAPHICS, INC.

1457 Montauk Highway • East Patchogue, N.Y. 11772 • 516-286-2943
searles@portjeff.net

Gateway Performing Arts

LAKE PEPIN PLAYERS, INC.

William & Sally Rogers, Producers

In Association with Wayne Nelson & Ardith Allen

Presents

Gary Burghoff

In

Neil Simon's

Last of the
**REDHOT
LOVERS**

CHARACTERS

(In Order of Appearance)

Barney Cashman GARY BURGHOFF
Elaine Navazio SHERRI LUBOV-RIPPS
Bobbi Michelle GENAH GALE
Jeanette Fischer NANCY MARVY

Directed by

WILLIAM RICHARD ROGERS

THE SCENE

The action takes place in a New York apartment.

Act One: A late afternoon in November

15 Minute Intermission

Act Two: A late afternoon in August

15 Minute Intermission

Act Three: A late afternoon in September

UNDERSTUDIES

For Mr. Burghoff: William Richard Rogers

For The Ladies: Elizabeth M. Desotelle

DESIGNERS

Setting

TERRY LYNN CARLSON

Based on a Design by Thomas Hailey

Lighting

SCOTT HERBST

CREW

Stage Manager/Technical Director

TERRY LYNN CARLSON

Assistant Stage Manager/Props/Wardrobe

ELIZABETH M. DESOTELLE

Transportation Coordinator

WAYNE NELSON

DRIVERS

WAYNE NELSON, JANE ALLEN, BILL HORNUNG

STAFF

General Manager

SALLY ALLEN-ROGERS

Company Manager

WILLIAM RICHARD ROGERS

Special Thanks To

Sea Wing Inn, Bumble Bee Inn & Leroy & Kathy Hanes,

Great River Roasters

& The People of Pepin, Wisconsin

The Actors and Stage Managers in this production are members of Actors' Equity Association, The Union of Professional Actors and Stage Managers in the United States.

Last of the Red Hot Lovers is produced in cooperation with Samuel French, Inc.
45 W. 25th St., New York, New York 10010

Tour Management

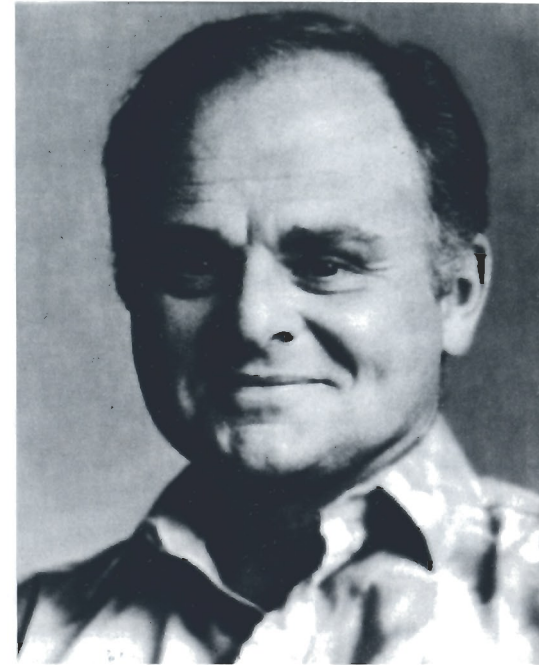
The ALKAHEST Agency, Inc.

P.O. Box 12403/Atlanta, GA 30355

Voice (404) 315-0709 / Fax (404) 636-0844

Who's Who in the Cast

GARY BURGHOFF (*Barney Cashman*) debuted on the New York stage 30 years ago in *You're A Good Man, Charlie Brown*, which won the Outer Circle Critics Award. He reprised that role in the Los Angeles Company and went on to create the character of Corporal "Radar" O'Reilly in the Robert Altman film *M*A*S*H*, in 1971. Gary began his eight years as "Radar" in the TV series, the only actor from the film to appear in the series, winning an Emmy for the role in 1976.



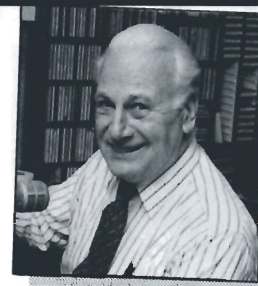
Among his many other outstanding acting achievements are the Christmas Classic film *The Man in the Santa Claus Suit* co-starring with the immortal Fred Astaire, the Broadway play *Twigs* with Carol Burnett and an original play called *A Good Look at Boney Kern* which again broke house records over the five years it played on the road. After leaving the show in 1979, he toured for two years in *The Owl and the Pussycat*, breaking house records in major theaters across America. His next theatrical endeavor was Woody Allen's *Play It Again, Sam* which also broke house records nationally. In 1983 he received critical acclaim for his dramatic debut in Brian Clark's *Whose Life is it Anyway?* at Burt Reynolds' Jupiter Dinner Theatre. In September 1987, Gary returned to Broadway in Larry Shue's hit comedy *The Nerd*. Gary then took several years away from the business to raise a family and develop his skills as a wildlife artist. (prints available in the lobby) Gary is happy to be making his return to the stage in *Last of the Red Hot Lovers*. Devoted to animal welfare all of his life, Mr. Burghoff is very proud of his new TV series *Pets: Part of the Family* which is currently being seen on 300 PBS stations coast to coast and which is receiving very high ratings.



Bryan McGowan, 5:30 - 10:00 a.m.

Join Your **wlim** STEREO Family

Monday - Friday



Jack Ellsworth,
"Memories in Melody"
10:00 a.m. - Noon



Bob Stern, Noon - 3:00 p.m.
1-2 BDWY- Hollywood Show



Gil Ellis, 3:00 - 7:00 p.m.

- Big Bands
- Popular Standards
- Local & Community News
- Daily Prizes

- GLENN MILLER
- FRANK SINATRA
- ROSEMARY CLOONEY
- BARBRA STREISAND
- NAT KING COLE
- DORIS DAY
- BENNY GOODMAN
- TONY BENNETT
- BING CROSBY

wlim 1580 AM • Long Island Music

Who's Who in the Cast Con't

SHERRI LUBOV-RIPPS (*Elaine Navazio*), a veteran actress who hails from St. Paul, Minnesota, most recently appeared on NBC's highly acclaimed *ER*. Other TV and film work include: *Unsolved Mysteries*, *Fast Food Films*, (for FX), *Young Doctors in Love*, *Raging Bull*, *Days of our Lives*, *The Young and the Restless* and *Nightbreaker* with Martin Sheen. Sherri trained at the University of Minnesota and worked with Sir Tyrone Guthrie in addition to Tomas MacAnna from the Abbey Theatre. An alumnus of The Brave New Workshop, an improv theatre company, some of Sherri's stage credits are: *Balm in Gilead*, *Man of La Mancha*, *Borstal Boy*, *Harvey*, *The Odd Couple*, *House of Blue Leaves* and *The Hot l Baltimore*. Ms. Lubov-Ripps resides in Los Angeles with her husband, Writer-Producer Lenny Ripps and can currently be seen in the new Southwest Airlines commercial "Cherries." This production reunites Sherri and her friend Nancy Marvy with whom she performed in *Man of La Mancha*. This marks Sherri's first National Tour with Lake Pepin Players. What could be better, performing and touring the country while working with a dear friend.

GENAH GALE (*Bobbi Michelle*) is from Powell, Wyoming and currently lives in Los Angeles. After studying Child Psychology at Northwest College she decided to go to Salt Lake City and audition for a children's movie called *Behind the Waterfall*. After booking the lead, she moved to L.A. to pursue a career in entertainment. Genah has been seen in numerous plays and commer-

cial including *The Miracle Worker*, *Out of Gas On Lovers Leap*, and *Boys Life* which also won "Pick of the Week" in the *Los Angeles Times*. She has studied with The Groundlings, an improv comedy troupe and at the Beverly Hills Playhouse with great teachers including Milton Katselas, Jeffery Tambor and Al Mancini. Genah is very excited to appear in *Last of the Red Hot Lovers*, not only for the experience, but so she doesn't have to waitress for a year.

NANCY MARVY (*Jeanette Fischer*) is a Minnesota native who has lived and worked on both coasts. She recently co-starred with Gavin MacLeod in a National Tour of *Moon Over Buffalo*. Theatres at which she has worked include: the Guthrie, The Ordway and the McKnight. Favorite roles include: Kate in *Broadway Bound*, Artie in *Eleemosynary*, Mrs. Van Daan in *The Diary of Anne Frank* and April White in *Savage in Limbo*. She has appeared in the film *Untamed Heart* and guest-starred as Rosa Coletti on ABC's *Happy Days*. While living in NYC she studied with Michael Howard. Nancy currently lives in Minneapolis with her family and a small menagerie of dogs and cats.

WILLIAM RICHARD ROGERS (*Director/Company Manager*) is proud to be directing one of his favorite actors in one of his favorite plays. As Managing Director and Co-Artistic Director of Lake Pepin Players, Bill has directed productions of *Wrong Turn at Lungfish*, *Anything Goes* (starring Ron Palillo and Beth Maitland), *The Fantasticks* (starring Gary Sandy), *Love Letters* (starring

The History of

PATCHOGUE THEATER

for the

PERFORMING ARTS

The Great War had ended less than five years before, and post-war depression had given way to an atmosphere of prosperity. Singer Hank Williams was born, actress Sarah Bernhardt died, as did President Warren G. Harding who was succeeded by Calvin Coolidge. Howard Carter was in Egypt, excavating the tomb of Tutankhamen, which he had discovered the previous November. It was 1923. F. Scott Fitzgerald was the most popular author, Flappers were in fashion, and in Patchogue, a new theater was born.

On Wednesday, May 23, 1923 Mike Glynne, a theatrical entrepreneur, opened a new theater to rival any on Long Island. Named after himself and his late partner Joseph Ward, Ward and Glynne's Patchogue Theatre was "palatial" and "magnificent in its interior decorations and appointments." It boasted a state-of-the-art geothermal air cooling system "whereby cool, fresh air will be rushed

into the theater from the floor line by fan drivers and sucked out at the ceiling line by four, seven foot typhoon fans above the ceiling." With over 200 square feet of ventilators this provided a complete change of air every five minutes. A marvel for its time.

With a seating capacity of almost 1500, the theater showed silent movies with a glittering array of the biggest stars of the day including Pola Negri, Gloria Swanson, Betty Compson, Rudolf Valentino, Buddy Rogers and all the Barrymores. Thomas Meighan, the star of the opening night movie "The Ne'er Do Well" attended the opening of the theater along with Charles Scwab, a friend and supporter of Mr. Glynne's. The theater also attracted the best acts of vaudeville. Hand picked by Mr. Glynne were such acts as John Phillip Sousa, Paul Whiteman, and Eddie Foy and the Seven Little Foys. But by the 1930's vaudeville was dead. People now wanted to see the "talkies" which were

Ward & Glynne's PATCHOGUE THEATRE
PATCHOGUE T. I. - PHONE PATCHOGUE 400

Today and Tomorrow
Thos. Meighan
IN **"THE NE'ER-DO-WELL"**
ALSO
Five Acts of Excellent Vaudeville
Four Ranch-Mike-Bobby Higgins & Co.-Newhall & Phelps
Harry Stahl & Co.
Two Shows Saturday Evening, 8:30 to 9 - 9 to 11:15

MONDAY & TUESDAY, MAY 28 TO 29
(Two Days Only) MATINEE AND EVENING (Two Days Only)
MATINEE AND EVENING
First Long Island Show -ing - Dances from Radio Theatre, New York

GLORIA SWANSON
IN
"PRODIGAL DAUGHTERS"
Also Five Acts of Excellent Vaudeville

4 Days Only (MAY 30th and 31st and JUNE 1st and 2nd)
REOPENING THURSDAY
IT'S HERE AT LAST
Harold Lloyd
IN
"Safety Last"
7 REELS OF LAUGHTER
See him climb a twelve-story building. You'll get out of it every step. The sky is the limit on laughter.

BIG VAUDEVILLE PROGRAM
Two Shows Every Saturday Evening, 8:30 to 9 - 9 to 11:15

Opening Weekend Bill in 1923

being churned out of Hollywood at an incredible rate. The Ward and Glynne became strictly a movie palace.

In 1929 the theatre was sold to Prudential Theatre Circuit and it remained a movie theater for the next forty plus years, but time was not kind. In 1958 a fire destroyed the lobby and it was rebuilt along smaller lines and several store fronts were added to the front of the building. In 1980 United Artists bought the building. Multiplexes were the rage, and the Patchogue Theater was split into a triplex, destroying its interior. Plaster columns were smashed, sheetrock and wallpaper were installed, and ceilings were dropped. Unfortunately, the theater failed a few years later and stood empty, forlorn and derelict until last year.

In 1997 the Patchogue Village Board, headed by Mayor Steve Keegan, bought the theater and applied for grants to renovate and restore the building to its former glory. A new lobby was designed by New York Design Studios featuring a mahogany bar and Art Deco style bathrooms. Meanwhile, Mayor Keegan approached Gateway Playhouse producers Paul Allan and John Hodge about the project and they came on board as theatrical consultants.

Since the Village envisioned a Performing Arts Center, construction was begun to address modern theatrical requirements. The building was repointed and brick walkways to the parking lot were built. 2500 feet of conduit were installed beneath the floor to bring 2000 amps into the building. 60,000 pounds of steel were installed on the stage to be able to support up to 17 tons of lighting and scenery in the air. The building had to be reinforced to accommodate this and supporting columns were installed. 1000 period seats were obtained from Manhattan's Imperial Theater.

In the winter of 1998, following the completion of the new grid and fly system, Gateway produced a holiday show, *Nutcracker On Ice*. The show was a resounding success. Meanwhile, Gateway Playhouse producers Paul Allan and John Hodge were looking for a second venue in addition to their Bellport playhouse in order to expand their business to a

POLICY AND PRICES

VAUDEVILLE and PICTURES
COMBINED

EXCLUSIVE PICTURES

LEGITIMATE STAGE PRODUCTIONS WITH BROADWAY REPUTATION

MATINEE DAILY 2 to 5p.m.
EVENINGS 7 to 11p.m.

EVENINGS

Feature Films 7:00 to 8:15p.m.
Vaudeville 8:15 to 9:30p.m.
Feature Films 9:30 to 11:00p.m.

SATURDAY EVENINGS

Two Complete Performances
6:30 to 9:00 - 9:00 to 11:15

SEATS RESERVED
At Evening Performances

Prices

MATINEE DAILY
(With Vaudeville and Pictures)
Entire Orchestra40c
Children20c
Loges50c

EVENINGS (Monday to Friday)
Orchestra (1st 22 rows)75c
Orchestra (Balance)55c
Loges99c

SATURDAY AND HOLIDAY
EVENINGS
Orchestra65c
Loges99c

WHEN PICTURES ALONE
ARE SHOWN
MATINEE - Adults20c
Children10c
Loges33c
EVENING - Adults33c
Children20c
Loges65c

ALL PRICES INCLUDE TAX
Smoking Permitted in Loges Only

Admission prices in 1923

year round operation. Recognizing the potential of the new theater, Allan and Hodge submitted a bid to become the operators of the venue. This summer their bid was accepted and Gateway was selected to run the theater for the Village on a five-year lease.

In August of this year the next phase of construction began. Chet Mitrani a fourth generation plasterer from Center Moriches, restored and repaired the plaster work on the auditorium walls, tapestry wall fabric was installed and an antique chandelier obtained from California. The seats were repaired, repainted and recovered. A 5,000 square foot addition was built to accommodate extended wing space for larger, modern sets and new dressing rooms.

The renovation is ongoing; plaster still needs to be painted and gilded, and the dressing rooms need to be completed, but the former Ward And Glynne Theater is once again the jewel of downtown Patchogue.

"The Theatre Classic of Long Island"
WARD and GLYNNE'S
PATCHOGUE THEATRE
OPENS! Wednesday Evening
MAY 23rd.

OFFERING A POLICY OF
Vaudeville & Feature Pictures
— COMBINED —



circa 1930

Who's Who in the Cast Con't

William Christopher), *Nunsense* and *Same Time, Next Year*. Before coming to LPP, Bill's favorite directing assignments were *Man of La Mancha*, *The Nerd* and an outdoor version of *Jesus Christ Superstar*. Bill dedicates his work on this production to his beautiful, wonderful wife Sally.

TERRY LYNN CARLSON (*Set Designer/Technical Director/Stage Manager*) Primarily an Actor and Director, Terry began performing at the age of 5 and has performed in more than 50 productions professionally. Over the past summer he starred in *The Robber Bridegroom* for the Minnesota Festival Theater in Albert Lea, Minnesota and portrayed the role of George, in the Lake Pepin Players production of *Same Time Next Year* in Pepin, Wisconsin. Terry produces, directs and performs in live industrials nationally and appeared in the film *Beautiful Girls* with Matt Dillon and Rosie O'Donnell. This past season Terry directed the premiere of the musical *Mary's Story* at the O'Shaughnessy in St. Paul; *Dakota* for the Dakota Sesquicentennial Chautauqua in Dakota County, Minnesota and *Noises Off* for

the Alexandria Arts Association, in Alexandria, Minnesota. He has worked in Stage Management for the National Tour of *Moon Over Buffalo* with Gavin MacLeod, The Ordway Music Theater and Chanhassen Dinner Theatres. He has designed sets for the Macphail Center and Minnesota Public Schools. Terry studied Music, Theater and Dance at the University of Minnesota and the Bernstein School in Los Angeles, California. He resides in Minneapolis with partner Elizabeth, daughters Jessica (15), Krista (12) and son Kenneth (2).

ELIZABETH M. DESOTELLE (*Assistant Stage Manager/Understudy*) Elizabeth is excited to be back in the theatre again after taking a hiatus to produce her greatest achievement yet, Kenneth, now nearly age two. Kenny has two lovely sisters, Jessica (15) and Krista (12) who thankfully will be joining us on this tour for a week in mid-October! The stage has been Elizabeth's primary home since she was in the sixth grade. She received her B.A. in Musical Theatre and Tele-Communications at the College of St. Catherine in

WIRELESS

ALL COUNTY
Security Systems, Inc. **FREE ESTIMATES**
 Residential • Commercial

(516) 286-8330

All County Home Security Systems
 680 South Country Road
 East Patchogue, New York 11772

Authorized Distributor For Dynamark • All Guard
 Safety Security Products



- Burglar Alarms
- Heat Detectors
- Fire
- Central Station
- Freeze Alert
- Medical Alert

Now THIS is an OLDIES station!



B-103
Long Island's Oldies

For the best
& most oldies!
103.1 FM

Who's Who in the Cast Con't

Minnesota and has continued to perform professionally throughout the United States. Credits include Troupe America's National Tour of *Moon Over Buffalo*, starring Gavin MacLeod; the role of Peggy Sawyer in *42nd Street* at Chanhassen Dinner Theatres; *Same Time Next Year* where she played Doris opposite her partner Terry Lynn Carlson at Lake Pepin Players; and singing and dancing in several musical and opera productions including, *My Fair Lady*; *Showboat*; *Crazy For You*; *Madam Butterfly* and *Carmen*. Other credits include roles in *Once Upon a Mattress*; *Three Penny Opera* and *Side By Side By Sondheim*. Elizabeth is very happy to be working and traveling with her partner Terry and incredibly thankful to have her parents helping on this tour as well. "I am truly blessed!"

LAKE PEPIN PLAYERS, INC. Located in the beautiful, burgeoning tourist Mecca of Pepin, Wisconsin, Lake Pepin Players were formed as a Non-Profit Corporation in 1995 to bring live, professional theatre to the Mississippi Valley. *Last of the Red Hot Lovers* marks LPP's 25th production and second National Tour following their Co-production (with Troupe America of Minneapolis) of *The Odd Couple* starring Jamie Farr and William Christopher. Theatrical luminaries who have graced the Pepin stage for LPP include William Christopher, Ron Palillo, Emmy Award Winner Beth Maitland, Gary Sandy, Kevin Hagen and now Gary Burghoff (our second Emmy winner). LPP's next touring project will be a production of the hilarious comedy *Noises Off*.

ACTING AND MUSICAL THEATRE TRAINING

Classes now enrolling!

all levels of acting for all ages thru adult

GATEWAY ACTING SCHOOL

LEARN FROM THE PROFESSIONALS!

286-9014



GATEWAY PERFORMING ARTS STAFF

Executive Producers	Ruth and Stan Allan
Producers	Paul Allan, John Hodge
Associate Producer	Jeff Bellante
General Manager	Gale Edwards
Company Manager	Timothy Wilkins
Casting Director	Robin Joy Allan
Production Manager	Kristin Hassett
Sound Designer	Dominic Sack
Technical Director	Brodie Alan Steele
Costume Coordinator	Cheryl Randal
Sound Engineer	Hannah Steindler
Wardrobe	Clarissa Smith
Master Electrician	Brian Loesch
Assistant Master Electrician	Craig Tichy
Technicians	Chris Creevy, Deborah Gauvette, Tara Kelly, Arron Moon, Clarissa Smith
Box Office Manager	Nancy Kana
House Managers	Kelly Adee, Laurie Parr
Group Sales	Nadine Hazard
Box Office Staff	Elizabeth Bender, Dana DeRudder, Danielle Frasca, Jodi Grega, Gladys Hawkins, Brian Lewis, Sarah Jean Miller, Gregg Monteith, Luz Wildmann
Administrative Assistant	Janet Trahan
House Staff	Bob Coupe, Cathy Esposito, Nick Harding, Don Harrison, Robert Nofi, Robert Pavanello, Theresa Pavanello, Grace Robbins
Maintenance/Landscaping Supervisor	Bob Nofi
Concession Manager/Production Photographer	Mil Kana
Musical Contractor	Dan Yeager
Publicist	Linda Unger
General Counsel	Ann L. Nowak & Associates

Gateway Playhouse would like to thank our volunteer staff for their dedication and support. It is much appreciated.

Al Pollog - Head Usher

Ushers – Olga Belz, June Budd, Martha DeRuiter, Mary Fox, Irene Fritz, Becky Gillen, Betty Gundlach, Marian Harrison, Gloria Maslak, Doris McHugh, Lou Novak, Toni Novak, Marie Rachek, Rita Wehner, Patricia Yurdiga

IF YOU WOULD LIKE TO JOIN OUR VOLUNTEER STAFF CALL 286-0555

BOX OFFICE HOURS – 7 DAYS –

Monday - Tuesday 11:00 - 5:00 p.m. • Wednesday thru Saturday 11:00 - 9:30 p.m.
Sunday 12:30 - 7:00 p.m.

PHONE ORDERS 286-1133

(VISA & MC Only) No checks accepted on day of performance.

WARNING – The photographing or sound recording of any performance is strictly prohibited.

Gateway Playhouse offers a wireless sound enhancement system for the hearing impaired. Inquire at the box office for more information.

FIRE NOTICE The exit indicated by a red light and sign nearest to the seat you occupy, is the shortest route to the outside. In the event of fire or other emergency, please do NOT run. WALK to that Exit. However, under normal circumstances, when leaving the Theatre, use the rear exits. SMOKING is prohibited in the BUILDING, as required by the Suffolk County NO SMOKING Ordinance. Smoking in any area designated “No Smoking” renders the offenders subject to a fine, or imprisonment, or both.

*Tremendous selection of fine jewelry,
period jewelry and collectibles.
Savings on unredeemed merchandise.*

*Written/Verbal and Estate Appraisals
by appointment*

W^{m.} J. O'Neill

**Serving Manhattan to Montauk
Jewelers and Collateral Loanbrokers**

**One East Main Street, Patchogue
289-9899**

Sean and Veronica Cantwell, Kathryn Cantwell

114 WEST MAIN STREET
PATCHOGUE, NY 11772
PHONE 475-4774
FAX 207-0267

TRIO
FINE FOOD & DRINK

KEVIN STAHL
CHEF/OWNER

PLEASE CALL FOR RESERVATIONS

10% OFF DINNER

WITH PRESENTATION OF A SHOW TICKET FROM
FALL-WINTER '99 SEASON

Varney's
Restaurant

Fresh Seafood Daily
Marinated Steaks

Mon - Thur 11am - 9pm Fri & Sat 11am - 10pm
Closed Sunday
Located on Montauk Highway in Brookhaven
286-9569

**For All Of Your
Remodeling Needs**



INCORPORATED

211 Mastic Beach Road
Mastic Beach, N.Y. 11951
(516) 281-8744 Fax (516) 281-4651

**Tricia's
Hair Galleria**

"A Salon of Excellence"



24 West Main Street
Patchogue, NY 11772
(516) 758-5670

Unisex Designs Abstract Art



**Hough & Guidice
REALTY**
RONALD BUSH INC.

EVERYTHING WE TOUCH TURNS TO **SOLD**®

**Full Time Staff
Specializing In
Commercial, Residential
And Land Sales**

Rentals-Appraisals

**Call For Free
Market Analysis**

120 East Main Street
Patchogue, N.Y. 11772
(516) 289-3737
Fax (516) 289-3744

If you would like to advertise
in this Playbill, please contact
Pam Young at -

SEARLES GRAPHICS, INC.

 516-286-2943
OR
516-459-1893



**Overlooking the Patchogue River
& Great South Bay**

Open all year long serving Lunch & Dinner.
Sunday-Thursday 11:45-10:00
Friday & Saturday 11:45-11:00

"Fresh Seafood, Steaks & Pasta"

- Catering on & off premises
- Transient docking
- Live entertainment Friday & Saturday nights
- "Home of The River Queen Mary" our authentic paddleboat
- Cruises, Catering, Brunches
- Playhouse Theater Specials
Bring ad- take 10% off entire bill
- Lounge hours 11:45-until close?

Ed & Mary Halverson
82 Brightwood Street, Patchogue, NY
(631) 654-2233

Located next to the Davis Park Ferry Terminal

ROE AGENCY INC.

OVER A CENTURY OF COMMITMENT
Since 1898

**PERSONAL AND
COMMERCIAL INSURANCE
PROPERTY
CASUALTY
LIFE
HEALTH
FINANCIAL SERVICES**

Walter A. Roe, President
Patricia A. Mankowski, VP and Secretary
Virginia Flynn, VP and Treasurer

125 EAST MAIN STREET
PATCHOGUE, NY 11772-0970
475-4000
FAX 475-7648
E-MAIL: roe@nais.com



Old Inlet Inn



Fine Dining

Dinners from 5:00 p.m.
Sunday Brunch 12 - 3:00 p.m.
Sunday Dinner 3 - 9:00 p.m.
Closed Mondays

**Ten Minutes From The
Beautifully Renovated
Patchogue Theater**

Show Tune Sing-A-Longs on
Fri. & Sat. with Jim Ahrend and others
at the Piano 9 - 1:00 a.m.

Walter A. Roe, Prop. Erik C.W. Brown, Chef

108 So. Country Road
Bellport 286-2650

**DO YOU RECEIVE OUR
FREE BROCHURE
EACH YEAR?**

**If not, fill out this form and
leave it in the box office.**

(Please Print)

Name _____

Address _____

Phone _____

LE SOIR

restaurant



Zagat Distinction 1999

Tuesday, Wednesday, Thursday & Sunday
Dinner Specials
Soup, Salad, Dessert & Coffee
included in price of entree
(Excluding Holidays)

825 Montauk Highway • Bayport
(516) 472-9090
Located 2 lights west of Nicolls Road
Closed Mondays

Giordano's Collision, Inc.

Foreign and Domestic

- Insurance Claims Specialist
- Exact Color Matching/European Heated Spray Booth
- Ask About Our Lifetime Warranty
- N.Y. State Inspections - Oil Change/Tune-Ups



"LET US BABY
YOUR BABY"

654-0542

www.giordanos-collision.com



2164 Rte. 112, Medford

1 Mile South of LIE, 3 Miles North of Sunrise Hwy.

OSPREY'S DOMINION



Enjoy some here Tonight!

VISIT THE WINERY

Osprey's Dominion Vineyards, Ltd.
44075 Main Road, Peconic, NY 11958
(516) 765-6188 • Fax: (516) 765-1903

THE BANK OF NEW YORK

LONG ISLAND REGION

24-hour ATM

PATCHOGUE BANKING
OFFICE LOCATED AT:

115 East Main Street
Patchogue, New York 11772

Lee Stevens
Assistant Vice President

(516) 654-2700

Member FDIC 1986 The Bank of New York

the Oasis

Diner ~ Restaurant

Welcomes You & Your Guests to Come & Enjoy
Our Daily Breakfast, Lunch & Dinner Specials

Breakfast Specials: 7 Days a Week
- Starting From \$2.85 (until 11A.M.)

Lunch Specials: Mon-Sat 11A.M.-3P.M.
- Starting From \$5.95

Pasta & Night: Mon-Tues 3P.M.-Close

Early Bird Specials: Mon-Thurs 3P.M.-6P.M.
Only \$7.95 Sunday 12P.M.-6P.M.

Dinner Specials: (complete) 7 Days a Week
From 3P.M.-Close
Sunday 12P.M.-Close
- Starting From \$8.95

- Within Walking Distance From Patchogue Theater
- Smoking Room Available
- 10% Discount to Ticket (off entire check) *except board specials

Tel. # 758-5504
Fax # 758-5441
located on Main St. & 112
Just East of the Theater

Winter Hours:
Sunday-Thursday 7A.M.-10P.M.
Friday 6A.M.-11A.M.
Saturday 6A.M.-11P.M.

* No Discounts or Sharing * No Senior Discounts on Specials



Goodfellas

A Pub That Becomes A Club

Happy Hour
Monday thru
Friday

Theater Special
Complete Dinner \$14.99
(includes Salad, Coffee and Dessert)

Dinner
Specials
Nightly

Come Celebrate The Millennium
with The Hottest Club on The South Shore
(car service available)

Book Your Holiday Parties
Private Room Available For All Occasions

Kitchen Open Daily 4P.M.-Closing
654-9598

68-70 West Main St. • Patchogue

Meritage Trattoria

Caffe, PIZZERIA, BAR

14 STATION ROAD • BELLPORT, LI, NY 11713

CHEF'S TASTING MENU MONDAY-THURSDAY

THREE COURSE PRIXE FIXE MENU FROM

5:00 TO 7:00 EVERY EVENING.

CASUAL AND CONTEMPORARY CUISINE.

PLEASE CALL FOR RESERVATIONS:

516-286-3300



Swezey

FUEL CO., INC. - EST. 1919


Suffolk's Largest Family Owned Oil Company

- Automatic Oil Delivery Service
- 24-Hour Emergency Service
- Budget Plans That Pay You Interest
- Expert Installation Of Boilers, Burners, Hot Water Heaters & Pool Heaters



475-0270

51 RIDER AVE., PATCHOGUE



Gude
photography
S West Main Street
Patchogue
654-8093
Kodak Gallery
Award Winner
March 3, 1998
February 28, 1996
Master's Degree
Photography

COLDWELL BANKER **JOHN W. ASHLINE**
Licensed Associate
Real Estate Broker

(516) 289-1400 BUS., (516) 654-5001 FAX
(516) 289-4171 RESIDENCE
ashline@coldwellbanker.com E-MAIL

BELLBROOK REALTY, INC.
66 MEDFORD AVENUE
PATCHOGUE, NY 11772

Each Office is Independently Owned and Operated

HSBC

*Salutes the
Patchogue Theater for the Performing Arts
for Bringing
Quality Entertainment
to the Community*



the **Oar**

A BIT OF THE FLORIDA KEYS TUCKED AWAY ON THE PATCHOGUE RIVER

LONG ISLAND'S FINEST STEAK AND SEAFOOD WATERSIDE DINING

◆◆◆
Pre-Theater Dinner Specials
After-Theater Specials - Dessert and Coffee
Present ticket for the day and get a special discount

◆◆◆
Fall and Winter Menu

Experience the Millennium Menu at The Oar
Now Accepting New Year's Eve Reservations
Private Catering Facilities Available

264 WEST AVENUE, PATCHOGUE
654-8266

RICHARD BLAKESLEE,
PROPRIETOR

MICHAEL WIRSHUP,
EXECUTIVE CHEF

Lunch & Dinner • Sunday Brunch Served Year Round

Joseph P. Zaffuto
Vice President & Branch Manager,
Patchogue Office

HSBC Bank USA
325 East Main Street
Patchogue, NY 11772
Tel: (516) 475-2600

Philip O. Porter
Vice President &
Regional Sales Manager

HSBC Brokerage (USA) Inc.
325 East Main Street
Patchogue, NY 11772
Tel: (800) 662-3343 Ext. 0423

HSBC Bank USA Member FDIC