

*Many Thanks to Our  
Premier Sponsor*



*The  
Cody Family  
Foundation*

*In recognition of  
Dr. Anthony Giammarino,  
Dr. Irving Shelsky  
and Kathleen Collins, RN  
for their many contributions to  
St. Charles  
Hospital and Rehabilitation Center.*



*St. Charles Hospital  
and  
Rehabilitation Center  
Presents*



*Musical Director: Marvin Laird*

*Friday November 17, 2000*

Many Thanks to Our  
Premier Sponsor



Mitzi VanTuyll



Nassau-Suffolk  
Lumber and Supply  
Corporation

To all in our St. Charles family  
who daily strive to help the children  
achieve small miracles



Bernadette Peters

For almost a century St. Charles has been renowned for its services to children who have sustained congenital, acquired or traumatic conditions and disabilities. Each day progress is made and success achieved in treatment and recovery for these children. This year Bernadette Peters is lending her enormous talent to help assure that the children of St. Charles continue to receive this exceptional care.



A native of Ozone Park, New York, Ms. Peters began her performing career at the age of three. Her talents have delighted audiences in many of Broadway's most popular musicals, including *Annie Get Your Gun*, *George M!* and *Song and Dance*. She also boasts an impressive list of television credits, and as a performer of unparalleled versatility has lit up the Hollywood scene in 14 films receiving a Golden Globe Award for her memorable performance in *Pennies from Heaven*.

In addition to several original Broadway cast albums including the Grammy Award winning *Annie Get Your Gun*, Ms. Peters has recorded four solo albums including a live recording of her Carnegie Hall concert. She has also received numerous accolades throughout her distinctive career, ranging from the Tony Award to a star on the Hollywood Walk of Fame.

St. Charles is honored to welcome Bernadette Peters to our family and on behalf of the patients and children of St. Charles thank her for sharing her dynamic talents to further our cause.



*2000 Annual Gala*  
*Friday, November 17, 2000*  
*Patchogue Theater*  
*Patchogue, NY*



*Honoring*

*Irving Shelsky, PhD*  
*Anthony Giammarino, MD*  
*Kathleen Collins, RN*

*Special Thanks*

*to the*

*2000 Gala Committee*

*Mitzi VanTuyt*

*Chairperson Special Events, Board of Governors*

*Thomas Wendelken*

*Chairman Development & Public Affairs Committee, Board of Governors*

*Gala Concert Committee Members*

*Della Baldo*  
*Jo Ann Bell*  
*Jill Borghenon*  
*Jenise Craig*  
*Sally Della Speranza*  
*David Dibner*  
*Rochelle Doberman*  
*Delicia Dubrow*  
*Ann Fallo*  
*Anthony Fallo*  
*Susan Gambale*  
*Peggy Giammarino*

*Grace Greff*  
*Marie Guiri*  
*Connie Hanes*  
*Sherrie Hammond*  
*Jean Hawkins*  
*Janet Keller*  
*Nancy Henry*  
*Dotti Kingman*  
*Gil Kingman*  
*Deborah Keidl*  
*Sileen Labiak*  
*Gathy Lanieri*  
*John Lillard*

*Patti Lillard*  
*Helma Ryfle*  
*Vitro Rizzi*  
*Dan Rowland*  
*Bruno Sidor*  
*Judith Sidor*  
*Bill Tuyt*  
*Chris VanTuyt*  
*Mary VanTuyt*  
*Michelle Zlotnick*  
*Daniel Zlotnick*  
*Sue Williamson*



*Kathleen Collins, RN*

*St. Charles nurses have long been distinguished for their standard of care and dedication to our hospital mission. On the front line of patient care they are the visible representatives of what St. Charles is all about – “compassionate care for the sick” – and, they have admirably upheld that sterling image throughout our history.*

*Still, there are those, nurses and other staff members, at St. Charles who consistently perform ethic. Among them is Assistant Nursing Care Intensive Care Unit the “Sr. Martha Winum Ministry.”*



*Kathleen St. Charles 20 years she had found the place to aspirations and the consummate role model for her ideals – Sr. Martha.*

*Kathleen went on to become an LPN and then a Registered Nurse. Her coworkers describe her as “exemplifying the essence of what a nurse should be...a unique person, an excellent nurse, smart, compassionate and genuinely humble.” She has been described as having the capacity to see both sides of a difficult issue and the capability of being supportive of each. She routinely and readily extends her dedication beyond duty, without prompting, and always with willingness and a smile.*

*It has been said that Kathleen approaches nursing as an art, one in which she is “truly gifted.” A “genuinely caring person,” Kathleen ministers to the needs of, not only her patients, but their families and often her fellow staff members, as well. She has been described as a wonderful combination of everything positive. The St. Charles Board of Governors now honors her spirit with the first annual St. Martha Winum Award for Mission and Ministry for her outstanding service to all – medically, socially and pastorally.*

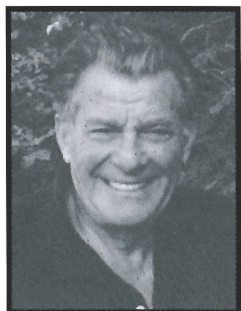






## Irving Shelsky, PhD

*A man known for his "quiet leadership and generous service" Irving Shelsky has dedicated himself to the children and families of the St. Charles Hospital Children's Clinics for almost a half century.*



*Through his commitment to the hospital mission, he has played a critical role in the development of the outstanding St. Charles Psychology Department programs that today serve thousands of Long Islanders.*

*For over 20 years, Dr. Shelsky volunteered his time helping to forge our Vocational Rehabilitation, Cardiac Rehabilitation and Traumatic Brain Injury Services. He was instrumental in the development of the BOCES school on our campus and St. Charles Educational and Therapeutic Center. In addition, he served for many years on the Board of Directors' Pediatric Committee overseeing the Clinic's work with handicapped children.*

*Dr. Shelsky represented our patients as a member of the Suffolk County Advisory & Planning Board for Mental Health, Mental Retardation and Developmental Disabilities over many years. He served on the training faculty at SUNY Stony Brook, St. John's University and South Oaks Hospital, introducing interns and trainees to St. Charles. As past president of the Suffolk County Psychological Association Dr. Shelsky was recently cited for 30 years of service to the profession and advocacy for the disabled. He also served the American Heart Association on Long Island between 1970 and 1994 chairing the Community Resource Committee for five years.*

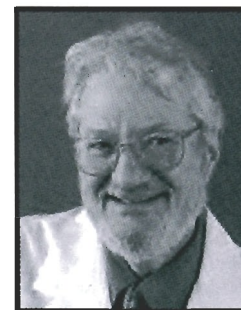
*Educated at City College of New York, Dr. Shelsky earned his Ph.D. in Psychology at Columbia University. He and his wife of 42 years, Lenore, who passed on in 1998, raised their two children in Nissequogue. Dr. Shelsky retired in 1999 and today enjoys the sunny weather of his new home in Long Boat Key, Florida.*



## Anthony Giammarino, MD

*Obstetrician-Gynecologist Anthony M. Giammarino, MD joined the St. Charles staff when our maternity services were in their infancy in 1966. Since that time he has been a driving force in the growth and development of programs and services that today position St. Charles at the forefront of maternity care on Long Island.*

*Dr. Giammarino attended Georgetown University, received his medical degree from the University di Bologna in Italy and completed his residency at Downstate Medical Center, NY. He is certified by the American Board of Obstetrics and Gynecology, a Fellow of the American College of Obstetricians and Gynecologists and a Diplomate of the ABOG.*



*As an active member of our staff Dr. Giammarino became Director of the Department of Obstetrics and Gynecology at St. Charles in 1978, a position he held for almost 21 years. During that time he was not only instrumental in pioneering innovations in childbirth services but has been a strong proponent of education for both staff and patients. He has championed services for women in all life stages helping develop important specialized services for women at our St. Charles Women's Health Source.*

*Further, Dr. Giammarino has served St. Charles as a member of the Strategic Planning and Ethics Committees. He held the office of President of the Medical Board from 1984 to 1986 and as such, was also a member of the hospital Board of Trustees during that same time. Dr. Giammarino served on our Operating Room, Peer Review and Section Review Committees and played a vital role as Committee Chairman of our Capital Campaign.*

*Residing in Belle Terre, Dr. Giammarino and his wife Peggy have three children and three granddaughters. Currently Dr. Giammarino practices Gynecology at his Port Jefferson and Patchogue offices, often treating patients that he cared for through their childbearing years over the past three decades.*

*Many Thanks to Our  
Gold Sponsor*



*St. Charles Hospital  
General  
Medical Staff*



*Many Thanks to Our  
Gold Sponsor*



*EAB*



*Many Thanks to Our*

*Gold Sponsor*



*Long Island  
Anesthesia Physicians*

*Carole W. Agin  
Brian P. Bateson  
Robert K. Bernstein  
Frederick Bunche  
Ron Chun  
Caroline Engelhardt  
Anthony Frasca  
Yakub M. Gangat  
Derick F. George  
Jeffrey E. Goldstein*

*Fra J. Kepes  
Fredric Jay Matlin  
Glenn J. Messina  
Robert C. Nataloni  
Michael A. Nemirov  
Joseph J. Neuschatz  
Steven Rothstein  
Sandy M. Schachner  
Scott C. Sherman  
David B. Paul*

*Long Island  
Pain Management*

*Carole W. Agin, MD  
Mehrean Golpariani, MD*



*Many Thanks to Our*

*Gold Sponsor*



*Interworks  
Systems, Inc.*

*1233 Walt Whitman Road  
Melville, NY 11747  
800-814-9759 phone  
631-424-9774 fax*

*www.Interworks.com*

*Chester Bedell  
President/CEO*



*Many Thanks to Our*

*Gold Sponsor*



*Mid-Suffolk  
Neurosurgical  
Associates, PC*

*Tra Chernoff, MD, PC  
Afif Tliya, MD  
Magdy Shady, MD*



*Many Thanks to Our*

*Bronze Sponsor*



*St. Charles Hospital  
Auxiliary  
Council*



*Many Thanks to Our*

*Friend of St. Charles*



*Iseman, Cunningham,  
Riester & Hyde, LLP*



*Many Thanks to Our*

*Friend of St. Charles*



*Long Island  
Commercial Bank*





*Many Thanks to Our  
Friend of St. Charles*



*Meyer, Suozzi,  
English & Klein, PC*



*Many Thanks to Our  
Friend of St. Charles*



*Peters & Dean  
Collection Services*



*Many Thanks to Our  
Friend of St. Charles*



*Rehabilitation  
Medicine Associates*



*Many Thanks to Our  
Friend of St. Charles*



*Richard Schmidt  
& Associates*



*Many Thanks to Our  
Friend of St. Charles*



*Smithtown  
Health Care  
Facility*



*Many Thanks to Our  
Friend of St. Charles*



*St. Charles  
Hospice*



*Many Thanks to Our  
Friend of St. Charles*



*Suffolk  
Obstetrics &  
Gynecology, LLP*



*Anthony Giammarino, MD*

*An inspiration, a mentor and the most  
understanding husband and Dad.  
We, your family, applaud your accomplishments,  
and thank you for belonging to us,  
and wish you continued health and love in the future.*

*Peggy  
Angela, Jim and Isabella  
Philip, Denise, Samatha & Emily  
Nicole & Luke*



*St. Charles  
Hospital & Rehabilitation Center*

*Gala 2000*





*Many Thanks to Our  
Concert Benefactors*



*KPMG Peat Marwick  
Wayne T. Rogers - Local Union 7*



*Decorations Underwriters*

*Agilent Technologies  
Astra Zeneca  
Pfizer Inc.  
TAP Pharmaceuticals*



*Many Thanks to Our  
Additional Sponsors*



*SmithKline Beecham  
Pharmaceuticals*

*Jefferson Resources*

*County Pneumatic Control, Inc.*

*All County Business  
Machines Corp.*



*Many Thanks to Our  
Friend of St. Charles*



*Paragon Foods*

*Nicholas Racanelli*



*Many Thanks to Our  
Friend of St. Charles*



*Verizon*



*Many Thanks to Our  
Concert Benefactors*



*Admark Creations, Ltd.  
Automated Financial Systems  
Armand D. Amato ~ The Lloyd Group  
The Country House  
Sofamor Danek  
Richard Dranitzke, MD  
Dr. William J. and Kaylee Engellenner  
Ehasz Giacalone Architects  
Simon Kirschl, MD  
Monfort, Kealy, McGuire & Salley  
Fra Levy, Professional Services, Inc.  
John Labiak, MD  
Medline Industries, Inc.  
Merck & Co., Inc.  
Mullooly, Jeffrey, Rooney & Flynn, LLP  
Drs. Pastore, Musto, Mills, Grinberg  
Michael Quadrino ~ Concorde Realty  
Dr. William Cohn ~ Long Island Digestive  
Disease Consultants, PC  
Orthopedic Associates of Long Island, LLP  
Zimmer New England, Inc.*



*Many Thanks to Our  
Reception Benefactors*



*Anthony Bove  
David Dibner  
Derek W. Stambolian  
Genserve, Inc.  
Putney, Trombly, Hall & Kirson, LP  
Ruskin, Moscou, Evans & Faltischek  
WJW Enterprises, Inc.*

*Decorations Underwriter*



*Barr & Barr, Inc.  
Cappy's Carpet, Inc.  
Checkers Drive Inn Restaurants  
Connie and Carl Hanes  
Garfunkel, Wild & Travis, PC  
Henry Kappelmier  
Dr. & Mrs. Walter Henry  
Mr. & Mrs. Richard Rafle*

St. Charles Hospital and Rehabilitation Center

2000  
Board of Governors

Calvin E. Rafuse, Jr.  
*Chairman*

Sr. Evelyn Eckhardt, D.W.  
*Vice Chairperson*

Rev. Msgr. Alan J. Placa  
*Secretary*

Joseph Tantillo, Jr.  
*President, St. Charles Society, Ex-Officio*

Florence Schretzman  
*President, St. Charles Auxiliary, Ex-Officio*

Hon. Alan Oshrin  
*Treasurer*

Walter Szczupak, M.D.  
*President, General Staff, Ex-Officio*

Bishop James. McHugh  
*Diocese of Rockville Centre, Ex-Officio*

Cathie Lee  
*Co-President, St. Charles Auxiliary, Ex-Officio*

**Members**

Hon. Lawrence J. Bracken  
Peter Costigan, Esq.  
Eric Dubrow, M.D.  
Derrick George, M.D.  
Nancy Henry  
Harvey Kolker, M.D.

Msgr. John A. McGuire, V.F.  
Americo Melo  
Hon. F. Daniel Moloney, Sr.  
Gregory J. Naclerio, Esq.  
Deacon Thomas F. Owens, Esq. K. M.  
Msgr. Dennis M. Regan

Vitro A. Rizzi  
Roberta Saunders-Gray  
Richard Schmidt  
Mitzi P. Van Tuyl  
Thomas R. Wendelken

**Honorary Members**

Sr. Jeanne Bouchard, D.W.  
Raymond W. Boushie  
Gerald Cohen  
Robert S. Curley  
James Duffy

John B. Gaul  
Rev. Msgr. Richard Hendel  
Alice Knipe  
Hugh B. McCool, K.H.S.  
Edward McGovern

Rev. William T. Murphy  
Rev. Msgr. John Nossler  
Samuel Person

**Catholic Health Services of Long Island Board of Directors**

*Chairman*  
George F. Rice, Esq.

*Vice Chairperson*  
Sister Evelyn Eckhardt, D.W.

*Secretary*  
Rev. Msgr. Alan J. Placa

*President*  
Ronald R. Aldrich

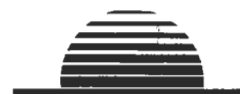
*Treasurer*  
Thomas E. Christman

**Members**

William Adkins  
Ann Barbaccia, M.D.  
Harry T. Barbaris, M.D.  
Sr. Elaine Callahan, O.P.  
Peter Costigan, Esq.

Thomas J. Dowling, Jr., M.D.  
Eric Dubrow, M.D.  
Robert Z. Gussin, Ph.D.  
Rev. John P. Langan, S.J.  
Kolathu A. Mathew, M.D.  
Mary Meehan

William A. Mullaney  
Patricia Nazemetz  
Mary Colleen Scanlon, R.N.  
James Small  
Richard Sullivan



**New Life**  
Management & Development, Inc.

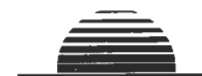
*is proud to join in the Recognition of this year's  
Theodore Roosevelt Award Recipients*

**Irving Shelsky, PhD**

**Anthony Giammarino, MD**

*and Special Congratulations to the  
Sister Martha Winum  
Mission & Ministry Award Honoree*

**Kathleen Collins, RN**



**New Life**  
Management & Development, Inc.

**Serving the Retirement Housing  
Industry Since 1990**

20000 Horizon Way - Suite 700 Mount Laurel, NJ 08054  
(856) 914-9111 Fax (856) 914-9110 1-888-500-1990  
www.nlm.d.com

