



Bringing New York Closer To The World.

American loves New York. And we show it every day with over 200 flights from six tri-state area airports to nearly 260 cities in 40 countries worldwide. For more information call your Travel Agent or American at 1-800-433-7300, or visit us on the web at www.americanair.com

American Airlines
American Eagle

LA GUARDIA • JFK • NEWARK • LONG ISLAND MACARTHUR • WHITE PLAINS • NEWBURGH STEWART
American Airlines and American Eagle are registered trademarks of American Airlines, Inc. American Eagle is American's regional airline associate.

PATCHOQUE
THEATRE
FOR THE PERFORMING ARTS

SPIRIT OF THE DANCE
FRANKLIN
STEEL PIER
GODSPELL

GATEWAY
PERFORMING ARTS

Autumn 2000 Playbill

*For peace of mind...
Take the time*



MAMMOGRAPHY SAVES LIVES

Mammography facility with full ACR accreditation & FDA certification

*W*omen's Health Services  Brookhaven

285 Sills Road • Building 5-6 • Suite E • Patchogue, New York 11772

For more information or to schedule an appointment for
Mammography, Ultrasound or Bone Density Testing
Call (631) 654-7700 or 654-7114

Marilyn Lerner, M.D., D.A.B.R. ~ Ronald S. Hames, M.D., D.A.B.R.
Ira J. Langer, M.D., D.A.B.R. ~ Daniel F. Settle, M.D., D.A.B.R.



TREASURES OF YEARS GONE BY

The warmth of gold and the artistry of radiant platinum... We invite you to come in and select from our collection of new and period treasures. Specializing in design and remounts.

Turn your unwanted jewelry into cash.

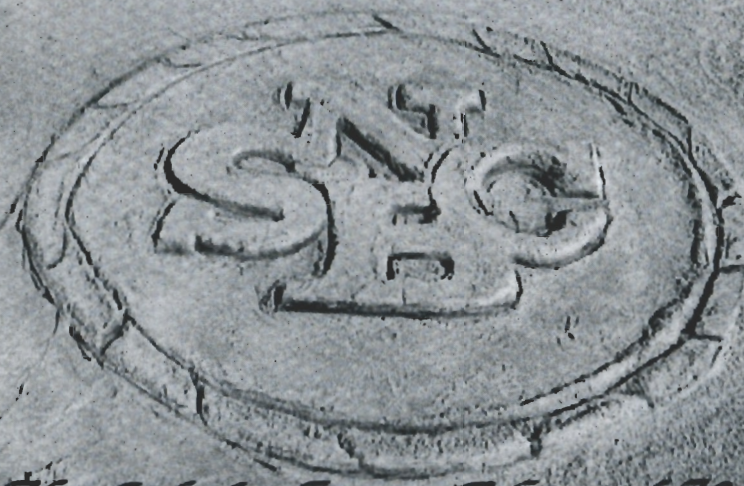
W^{m.} J. O'Neill

Sales Exchange Co., Inc.
Jewelers and Collateral Loanbrokers
One East Main Street • Patchogue
631.289.9899

Mention this ad for 10% discount on purchase

From the Sound to the Sea...

We've been helping
choreograph the financial futures
of neighbors like you.



The Suffolk County National Bank

www.scnb.com

Equal Opportunity Lender

Member FDIC

A Note From the Producer

Dear Patrons,

We're almost to the end of our first year as managers of Patchogue Theatre For The Performing Arts...and this is just the beginning.

Programming Patchogue Theatre has allowed us to explore the vast world of entertainment, bringing in dance companies from around the globe, legendary musical acts, and national tours of Broadway shows. We have been able to include representatives from every genre of entertainment including The American Repertory Ballet, Roy Clark, The Amazing Kreskin, The Bacon Brothers, and Chuck Mangione.

Our Fall season will continue to surprise and delight our patrons with Vidbel's Olde Tyme Circus, Ballet Gran Folklorico de Mexico, Martha Reeves And The Vandellas, Blackmore's Night and Ratdog. And keep an eye out for announcements of our special Holiday lineup!

It's been a fantastic first year, and we have you, our patrons, to thank. Your appreciation and support makes the hard work all worthwhile. We look forward to bringing another wonderful schedule of entertainment to you next year.

Paul Allan
Producer

Look For A
**VERY GRAND
 RE-OPENING!**

Of Swezey's New Patchogue Store
 In The Beginning Of October!



A Spectacular Opening Celebration

Open To The Public Mid-October
 Look For Details



New Patchogue Store Located At
 225 W. Main Street, 475-0280

LOUIS XVI

Open for Lunch & Dinner
 Tuesday through Sunday

Reservations
 Recommended



Voted the No. 1 restaurant overall on LI, as well as No. 1 for Decor – devotees swear it could rival “the Palace of Versailles” – this “extravagant,” “elegant” and “exquisite” “crown jewel” boasts “gorgeous views” of Great South Bay from its “beautiful setting on the water” in Patchogue; indulge in “extraordinary,” “imaginative” New French cuisine “magnificently presented” by an “impeccable” staff; dip into the “kids’ college fund” or “mortgage the house” if you must, but it’s “worth every franc” for such an “incredible dining experience.”

– Zagat Survey 2000 26 28 25 \$57

600 South Ocean Avenue • Patchogue, 654-8970

THE HARBOR SIDE
“Incomparable Seafood Restaurant”

Open 7 Days a Week
 at 11:30 a.m.

All Major Credit
 Cards Accepted.

Complete Dinners
 Everyday.



Highly Recommended:

Newsday

Daily News

NY Post

The Practical Gourmet

Complete Lunches*

Served Mon. - Sat.
 11:30 a.m. - 3:30 p.m.
 Starting at \$8.50

Complete Early Bird Specials*

Served Mon. - Fri. 3:30 p.m. - 5:45 p.m.
 Sat. 3:30 p.m. - 5:30 p.m.
 Sun. 11:30 a.m. - 4:00 p.m.
 Starting at \$12.95

Sunday Specials

Includes: Soup or Salad,
 Potato, Vegetable, Dessert & Coffee.
 11:30 a.m. - 4:00 p.m.
 Starting at \$9.95

*Above specials not available for groups of 15 or more or holidays. Prices subject to change.

Special Rates for Theatre Groups from 20 to 125. Call for more information.

503 E. Main Street, Patchogue, New York • Located on the corner of E. Main St. (27A) and Phyllis Dr.
 (631) 654-9290

*If you're not completely
satisfied with the performance
of your bank,*

come into any North Fork Bank branch today
and find out about the best-performing bank in
America. The women and men in our branches
are what really makes North Fork Bank number
one... the most efficient, hardest working
bankers in the industry.

NFB

NORTH FORK BANK™

Norma Marx, VP/Branch Manager • Patchogue Branch
Corrinne Newman, VP/Branch Manager • Shirley Branch
Teri George, AVP/Branch Manager • Blue Point Branch
Marion Reinhardt, AVP/Branch Manager • Sayville Branch
Member FDIC

Fantastic Gardens

"Turn our fantastic quality into your fantastic garden"



*Holiday plants,
House plants, Annual,
Perennials and more*

67 Avery Avenue
Patchogue, NY 11772
475-7118

Budweiser

On Tap Here

at Gateway



Clare Rose

"Distributors of Fine Brewery Fresh Products"



"We're Patient People"

AMATO FAMILY CHIROPRACTIC
16-2 STATION ROAD ■ BELLPORT, NY 11713

631-286-2300

Infant, Child & Adult Care

Dr. Frank J. Amato

Taking Care of Cast and Crew at Gateway for Over 10 Years

Bellport CHOWDER HOUSE



An Eating and Drinking Tradition

FULL MENU

FULL BAR

Open Daily For Lunch and Dinner
Seven Days A Week

Sunday - Thursday till 11:00 p.m. Friday & Saturday till Midnight

**SPECIALIZING IN FRESH LOCAL SEAFOOD
AT AFFORDABLE PRICES**

*Before and After the Show You'll Want to Meet and Eat At
THE CHOWDER HOUSE*

TAKEOUT

CATERING

19 Bellport Lane • Bellport Village • 286-2343

Bravo



Quality Printing and Innovative Designs...
for all your graphic and printing needs.

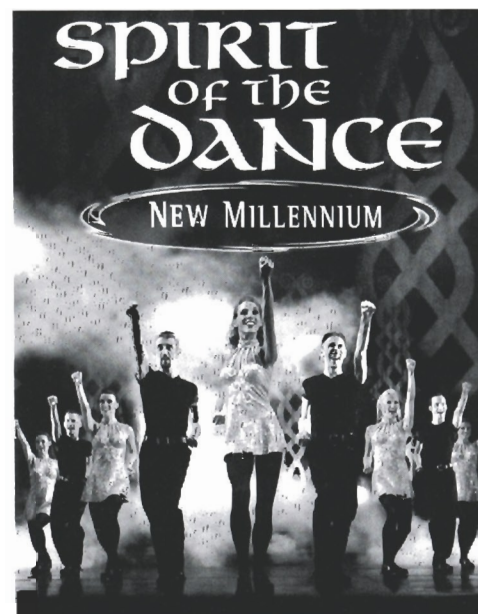
56 Old Dock Road • Yaphank, N.Y. 11980 • 631-345-2202
searles@portjeff.net

GATEWAY
PERFORMING ARTS

Presents



A Dublin Worldwide Production



Producer and Composer
DAVID KING

Director and Choreography
ALAN HARDING

Musical Director
DAVE WILLIAMS

Lighting Design
PETER KRAMER

Technical Director
DAVID COMEAU

Exclusive Tour Direction
Big League Theatricals, Inc.
1501 Broadway
New York, NY 10036

Visit our website at www.spiritofthedance.com

SPIRIT of the DANCE
The New Millennium

IN THE HAUNTING MELODY OF THE CALLING PIPES HER SPIRIT WAITED

WAITING FOR HER TRUE LOVE TO RETURN

SOULS BONDED TOGETHER FOR ALL ETERNITY
YEARNING, YEARNING

THEY HAD TO FIND EACH OTHER
TWO HALVES LONGING TO BECOME ONE
MUSIC WITHOUT PASSION
WINTER WITHOUT SNOW
SUMMER WITHOUT SUN
SEARCHING, SEARCHING

HER JOURNEY BEGAN
HEARTS POUNDING TO THE BEAT OF THE DRUMS
EVERY PLACE HER SOUL COULD REACH TILL SHE FOUND HIM

HER SPIRIT COULD NOT REST UNTIL HE CAME FOR HER
UNTIL HE DANCED FOR HER ONCE AGAIN AND TOLD HER THAT HE
LOVED HER

"A record-breaking standing ovation and a crowd so thrilled they wouldn't let the dancers leave the stage"
—Blackpool Gazette

Musical Numbers

ACT ONE

1. Spirit of the Dance Overture
2. Prologue
 - Spirit's Awakening
 - New Millennium Celebration
3. Spirit Song - Here I am
4. Virtuoso
5. Traditionally Irish
6. Flamenco Fiesta
7. Spirit's Born - The Song
8. Funk-a-billy Line dance
9. The Ultimate Showdown

ACT TWO

1. Saturnalia
2. Celtic Rock
3. The Dancer's Tale
4. The Meeting
5. Duet
6. Salsa D'Brazil
7. Fiddle Fantasia
8. Tempest
9. The New Millennium
10. The Finale

Due to contractual obligations of certain artists within the company, the proposed content and running order of the production is subject to change at each performance.

Spirit of the Dance is one of the most successful shows ever to come out of Ireland with six troupes currently touring the world.

Four years after the original opening night, over 5 million people have been left mesmerized by this spectacular production. Theatres all over the world report record breaking ticket sales as soon as an appearance of this block-busting attraction is announced.

The American home for Spirit of the Dance is in Branson, Missouri, where appearances at the famous Blue Velvet Theatre have smashed all known box office records for this extraordinary theatre town of Branson.

Irish in origin, electrifying in effect and bursting with power, Spirit of the Dance is an awesome production featuring a spectacular blend of traditional culture that masterfully weaves together dramatic Irish Energy with the primeval forces of Flamenco, Red-Hot Salsa and Jazz.

They sound like a runaway express train and their frenzied skill and military precision send shivers down your spine. Not one Irish dance shoe steps out of line as the thunderous feet of the Irish International Dance Company perform as one.

It's thrilling, it's heart pounding, it's sensational!

This is Irish Dance meets Broadway!

Quintin Young
International Tour Director

U.S. Corporate office
Linda Kloog
Sales/Marketing/PR Director

Spirit of the Dance
714 State Highway 248, Suite 1
Branson, Missouri 65616
Phone: (417) 336-9494
E mail: spiritcorporate@aol.com
Website: www.spiritofthedance.com

The World Speaks in Over 1900 Different Languages, but sees in only one...

PHOTOGRAPHY, the universal language

MICHAELS CAMERA CENTER

18 East Main Street, Patchogue, New York

475-4173

Your Total Imaging Center
Full Digital Capabilities...
Prints from Any Source!



Now THIS is an OLDIES station!



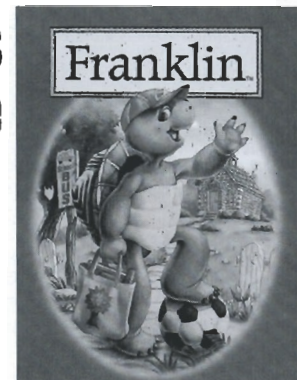
B-103
Long Island's Oldies

For the best
& most oldies!
103.1 FM

Gateway Performing Arts
presents a
Tanglewood Family Entertainment Inc.
production of



Franklin's Big Adventure



Starring
FRANKLIN THE TURTLE
BEAR SNAIL
FOX BEAVER

Welcome to the world of *Franklin the Turtle*, the gentle yet mischievous children's character that has been sweeping the globe. Since the first book, *Franklin in the Dark*, Franklin Books have sold over 15 million copies worldwide and have been translated into 10 languages. The top rated Nickelodeon Series is shown three times daily, and is the best selling scholastic book series, with over 20 million in print.

Franklin and his adventures are weaved through the imaginative writing of **Paulette Bourgeois**, and pictures are captured through the rich artwork of **Brenda Clark**. Along with his pet fish Goldie and stuffed dog Sam, and a cast of fun loving forest animals that he calls his friends, Franklin is a phenomenon that will endure for years to come.

Now, Tanglewood brings *Franklin the Turtle* to musical theater in his first concert presentation. *Franklin's Big Adventure* is a 60 minute length musical production that features Franklin and his friends **Fox, Beaver, Bear** and **Snail**. The pals are off to visit the local museum, where Beaver tells Franklin that there are real dinosaurs waiting for them!!! Not a great idea as Franklin is concerned!! Since all his friends are going, Franklin does not want to be left out and reluctantly goes along.

Join Franklin and his friends at the museum where they visit displays of the Roman empire, Ancient Magical Instruments, The Rain forest and eventually, the Dinosaur Exhibit where Franklin has a "Close Encounter" with a creature larger than himself. With choreography by award winner Mary-lu Spinney and music produced by Matt Segriff, the production delivers non-stop audience participation, excitement and fun for the whole family.

LYONS FUEL OIL CO. INC.

24 Hr. Service est. 1934 Automatic Delivery

23 Station Road • Bellport, New York 11713
Phone (631) 286-0395 • Fax (631) 286-0396

CANDY CRAVINGS

128 South Country Road
Bellport Village, NY 11713
(631) 286-6100



COLLINS & MAIN

Restaurant and Lounge



Sayville's Culinary Crossroads

"SUPERB"

- ZAGAT -

Piano Lounge/
Live Entertainment

Pre-Theater Pre Fixe

100 Old South Main Street
Sayville

(631) 563-0805

10% Off Dinner

(excluding beverages)

with presentation of show ticket
from Fall 2000 season

SONGS

Come See The World

Glenn Bennett

Franklin Theme

Bruce Cockburn

The Hello Song

Matt Segriff

Bass Break

Matt Segriff

Georgia Camp Meeting

Matt Segriff

Hokey Pokey

Matt Segriff/Public Domain

Sunshine Medley

Matt Segriff

Get Up Get Down

Glenn Bennett

Sunshine Sing A Long

Matt Segriff

The Rain Forest Song

Matt Segriff

Lunch Box Jam

Peter Munding

The Dinosaur Song

Matt Segriff

When you have a good friend

(Dum De Diddle)

Matt Segriff

What I do in the Morning

Matt Segriff

Kitchen Session

John Allen Cameron

PRODUCTION CREW

Executive Producer - Bruce Davidsen

Set Design - Ian Albright

Props - Anna Marie Bract

Choreography - Mary-lu Spinney

Production Director - Laird MacDonald

Production Coordinator - Kerry Forbes

If you would like to advertise in this
Playbill, please contact Pam Young at



631-345-2202 or 516-459-1893

Tanglewood Family Entertainment Inc.

39 Orfus Rd., Unit "G," Toronto, ON M6A 1L7

Voice: (416) 787-8687 Fax: (416) 787-8647

Bruce W. Davidsen, president, founded the original company in Vancouver in 1969, to represent and present entertainers, record companies and major corporate sponsors.

Tanglewood is a full-service Entertainment Management and Marketing company headquartered in Toronto. The company is staffed by people who have years of experience in all aspects of global entertainment marketing.

Tanglewood currently manages the careers of a number of prominent Family Entertainers, and media personalities. It also has its own concert production company, and publishing company.

Tanglewood has been successfully creating and executing sales and marketing promotions on behalf of a broad spectrum of major national and international corporations. Its steadily expanding client list currently includes such major players as Coca-Cola in Canada, USA and Great Britain, Labatt's, McDonald's Restaurants, Wendy's Restaurants, Air Canada, Air France, Molson's, The Sun Newspaper Group, General Motors, MDW Communications, Spafax Media, and the Royal Bank.

www.gudephotography.com



631-654-8093

Varney's

Restaurant

**Fresh Seafood Daily
Marinated Steaks**

Mon - Thur 11am - 9pm Fri & Sat 11am - 10pm

Closed Sunday

Located on Montauk Highway in Brookhaven

286-9569

SUFFOLK COUNTY PARKS

Presents:

"Biographies on Stage" 2000

At Deepwells Farm - Rte. 25A, St. James

LIE -Exit 56N, Rt 111 to Rte 25A.



Lillian Russell

At the turn of the century, Lillian Russell was acclaimed as America's greatest musical-comedy star. A striking beauty with a magnificent operatic voice, Russell was a precursor to Mae West and Marilyn Monroe.

Sept. 7 - Oct. 15

(Thurs. - Sat. 11:30 am; Sun. 4:00 pm)

*Producer's Performance -Oct. 15 - 4:00 pm

**Admission: \$30 includes
Performance & Light Lunch
RESERVATIONS A MUST!**

Call (631) 862-6080

Friends
for
Long
Island's
Heritage

Robert J. Gaffney,
County Executive



Debra Canavan
CLASSICS
Casual Career and Cocktail

Michael stars
Newman
Joseph
Theory
Tommy Bahama
Jenae Maag
Nicole Miller
Brighton Leathers
Lilly Pulitzer
Shoshanna
A.B.S.
Flax
and much more

53 Main Street
Sayville

631.563.9385





Gateway Performing Arts
presents a
Mainstage Productions, L.L.C.
and **The North Carolina Theatre**

production of



Music & Lyrics By

JOHN KANDER & FRED EBB

Book By

DAVID THOMPSON

Conceived by Scott Ellis, Susan Stroman & David Thompson

Starring

CONNIE SALOUTOS

DAVID ENGELMAN

TODD ALAN JOHNSON

With

Matt Allen
Michelle Aravena
Hayes Bergman
Timothy Ford
Shari Jordan
Joel Newsome

Sarah Anderson
Stephen Bay
Heidi Blickenstaff
Amy Goldberger
Neal Richard Lee
Mary Elizabeth Rich

Becca Ayers
Timothy Scott Bennett
Joanna Chozen
Emily Rabon Hall
Ryan Meldrum
Katharine Steers

Musical Director/Conductor
JULIE FLINCHUM

Lighting Design
DAVID NEVILLE

Production Stage Manager
DEBORAH D. RAULERSON

Sound Design
JONATHAN PARKE

Technical Director
TIM FANDREI

Scenic Designer
WILLIAM C. RODGERS

Lighting Provided By
BN PRODUCTIONS

Sound Provided By
ONE DREAM SOUND

Costumes Provided By
**GOODSPEED
OPERA HOUSE**

Scenery Provided By **ALTERNATE ROUTE STUDIOS**

Directed and Choreographed By
TEE SCATUORCHIO

Associate Choreographers
KERRI QUINN & LEE WILKINS

Scenes and Musical Numbers
Time: 1933
Place: Steel Pier, Atlantic City

ACT I

Prelude

- Scene 1: Limbo into Outside The Steel Pier
"Willing to Ride" Rita
- Scene 2: The Steel Pier Ballroom
"Everybody Dance" Mick, Mick's Picks & Company
"Second Chance" Bill
- Scene 3: Mick Hamilton's Office
- Scene 4: The Dressing Rooms
- Scene 5: The Steel Pier Ballroom
"Montage I" Company
- Scene 6: The Steel Pier Ballroom
- Scene 7: Behind the Bandstand
"A Powerful Thing" Mick & Mr. Walker
- Scene 8: The Bandstand/ The Steel Pier Ballroom
"Dance With Me" / "The Last Girl" Mick, Rita, Bill & Company
"Montage II" Company
- Scene 9: Mick Hamilton's Office
- Scene 10: The Steel Pier Ballroom
"Everybody's Girl" Shelby
- Scene 11: The Diving Horse Tank
"Wet" Rita & Bill
- Scene 12: The Steel Pier Ballroom/The Trenton Air Show
"Lovebird" Rita
- Scene 13: Behind the Dressing Screens
- Scene 14: The Steel Pier Dance Floor
"Everybody Dance" (reprise) Mick & Company

ACT II

Entr'acte

- Scene 1: The Dressing Rooms
"Leave the World Behind" Rita, Bill & Company
- Scene 2: A Corridor Near the Dance Floor
- Scene 3: The Steel Pier Ballroom
- Scene 4: On the Pier
"Somebody Older" Shelby
- Scene 5: The Diving Horse Tank
"Running in Place" Rita
- Scene 6: The Steel Pier Ballroom
"Two Little Words" Precious, Mick's Pick's & Company
"First You Dream" Bill & Rita
- Scene 7: The Women's Dressing Room
- Scene 8: The Steel Pier Ballroom
"Steel Pier" Mick, Rita & Mick's Picks
- Scene 9: The Women's Dressing Station
- Scene 10: Limbo
"Steel Pier" (reprise) Company
- Scene 11: Outside The Steel Pier

concerts for Thanksgiving



**BLACKMORE'S
NIGHT** UNDER A
VIOLET MOON
RITCHIE BLACKMORE & CANDICE NIGHT

An evening of New Age and Renaissance music
Friday, November 24th
8:00

Saturday, November 25th
8:00

RATDOG

featuring
Bob Weir
of The Grateful Dead

STEEL PIER CAST (in order of appearance)

Bill Kelly	David Engelman
Rita Racine	Connie SaLoutos
Shelby Stevens	Heidi Blickenstaff
Mick Hamilton	Todd Alan Johnson
Mr. Walker	Timothy Scott Bennett
Buddy Becker	Joel Newsome
Bette Becker	Michelle Aravena
Johnny Adel	Neal Richard Lee
Dora Foster	Becca Ayers
Happy McGuire	Timothy Ford
Precious McGuire	Amy Goldberger
Luke Adams	Hayes Bergman
Mick's Picks	Sarah Anderson, Emily Rabon Hall, Mary Elizabeth Rich
Sonny	Matt Allen
Nurses	Emily Rabon Hall & Sarah Anderson

Steel Pier Marathon Couples

Couple #39	Connie SaLoutos & David Engelman
Couple #32	Heidi Blickenstaff & Hayes Bergman
Couple #17	Michelle Aravena & Joel Newsome
Couple #4	Amy Goldberger & Timothy Ford
Couple #26	Becca Ayers & Neal Richard Lee
Couple #44	Matt Allen & Joanna Chozen
Couple #18	Stephen Bay & Katharine Steers
Couple #12	Ryan Meldrum & Shari Jordan
Couple #51	Matt Allen & Joanna Chozen
Couple #3	Ryan Meldrum & Shari Jordan
Couple #23	Matt Allen & Joanna Chozen
Couple #18	Stephen Bay & Amy Goldberger
Couple #58	Hayes Bergman & Mary Elizabeth Rich

Understudies

Happy	Ryan Meldrum
Johnny/Buddy/Walker	Matt Allen
Rita/Shelby	Shari Jordan
Dora	Katharine Steers
Bette/Precious	Joanna Chozen
Mick	Hayes Bergman
Bill	Timothy Ford
Luke	Todd M. Smith
Mick's Picks/Nurse	Debra Denys Smith replaces Emily Rabon Hall after Sept. 21

Swings: Felicity Stiverson, Todd M. Smith

Orchestra

Conductor	Julie Flinchum
V.O. keyboards	Nancy Whelan
Drums	Gideon Grossman
Reed I	Bryan Crook
Reed II	Damian Cremisio
Trombone	Brian Reichow
Violin	Johann Bast

114 WEST MAIN STREET
PATCHOGUE, NY 11772
PHONE 475-4774
FAX 207-0267

TRIO
FINE FOOD & DRINK

KEVIN STAHL

CHEF/OWNER

PLEASE CALL FOR RESERVATIONS

10% OFF DINNER

WITH PRESENTATION OF A SHOW TICKET FROM
FALL 2000 SEASON

WHO'S WHO...

CONNIE SALOUTOS (*Rita Racine*) recently played the lead in the first National Tour of THE GOODBYE GIRL and Rosalind in the National Tour of MOON OVER BUFFALO. A Carbonell Award recipient for her portrayal of Anita in WEST SIDE STORY, Connie has also been nominated for Best Actress for her work as Young Belle in LITTLE ME, Aldonza in MAN OF LA MANCHA, and Polly in CRAZY FOR YOU.

DAVID ENGELMAN (*Bill Kelly*) Recent roles: "Charlie Cowell"/MUSIC MAN (dir. Terrence Mann), "Bob Cratchit"/CHRISTMAS CAROL (Hilton Head Self Arts Center), "Perchik"/FIDDLER, COMPLETE WKS WM SHKSPRE (Weathervane Theatre). MFA Hilberry Repertory, Detroit. "Love/thanks - Mom and Dad."

TODD ALAN JOHNSON (*Mick Hamilton*) proudly continues his association with The North Carolina Theatre in STEEL PIER! Highlights: NCT's BEST LITTLE WHOREHOUSE...; Yeston & Kopit's and Ken Hill's versions of PHANTOM; "Javert" in the National Touring Company of LES MISERABLES, including six months opposite Colm Wilkinson's "Valjean" (Toronto, '98-'99).

MATT ALLEN (*Sonny/Chorus/Walker u/s/ Johnny u/s/Buddy u/s*) Matt's last show with NCT was OKLAHOMA! in the spring. This past summer Matt was busy doing PIPPIN at Paper Mill Playhouse. Matt thanks his family and friends and especially Danica for their love and support.

SARAH ANDERSON (*Nurse/Mick's Pick*) Credits: National Tour: JOSEPH...DREAM-COAT, European Tours: PHANTOM OF THE OPERA, ON THE TOWN. Regional: NO, NO, NANETTE, WEST SIDE STORY, WILL ROGERS FOLLIES and SEVEN BRIDES. Radio City Rockette. Sarah dedicates this show to her cousin, Ari.

MICHELLE ARAVENA (*Bette Becker*) NY credits: SOUND OF MUSIC (Lincoln Center), Camila (Manhattan Theater Club). Regional: EVITA (Palace Theater, Downtown Cabaret), WIZARD OF OZ, PETER PAN (Actors Theater of Louisville). Michelle was most recently seen performing in WEST SIDE STORY at La Scala Opera House directed by Joey McKneely.

BECCA AYERS (*Dora Foster*) Was last seen in the National Tour of JEKYLL AND HYDE as "Lucy" or "Nellie" (depending on the night)! Other favorite roles include "Sally Bowles" in CABARET and "Lucianna" in THE COMEDY OF ERRORS.

STEPHEN BAY (*Chorus*) recently performed in NCT's WHOREHOUSE. Other credits: US tour and Hamburg productions of CATS; NO, NO, NANETTE; PETER PAN; LA CAGE AUX FOLLES; DAMN YANKEES; THE MERRY WIDOW; CINDERELLA. He is a former gymnast from the University of Minnesota.

TIMOTHY SCOTT BENNETT (*Mr. Walker*) Tour: MY FAIR LADY (with Richard Chamberlain), PHANTOM, SOUTH PACIFIC (with Robert Goulet) Regional: MOST HAPPY FELLA, SAYONARA, SHOW BOAT. Off and Off-Off Broadway: BUSKERS, TOO MANY GIRLS, PARK AVENUE, MEASURE FOR MEASURE. Television: "Growing Pains" (co-starring), "General Hospital", "Ryan's Hope", "Guiding Light".

HAYES BERGMAN (*Luke Adams*) New York: A CHRISTMAS CAROL (MSG). Tours: STATE FAIR (National with John Davidson), CRAZY FOR YOU (European), 42ND STREET (Korean). Regional: Paper Mill Playhouse, Arena Stage, Gateway Playhouse and others.

HEIDI BLICKENSTAFF (*Shelby Stevens*) National Tours: JEKYLL AND HYDE (Broadway National), DREAMGIRLS and THE WHO'S TOMMY (Mrs. Walker u/s). Some regional: SOUTH PACIFIC, BIG RIVER, MAME and most recently, BEST LITTLE WHOREHOUSE IN TEXAS (Doatsey-Mae) at the North Carolina Theatre. Heidi is a Duke University graduate. "Love to Robert."

JOANNA CHOZEN (*Chorus/Bette u/s/ Precious u/s*) NCT productions: "Shy" in BEST LITTLE WHOREHOUSE IN TEXAS; SOUTH PACIFIC. Joanna toured internationally with FAME and nationally with HELLO, DOLLY! She graduated from the University of Michigan with a BFA. "Thanks to Mom, Dad and Justin for their love."

Irish Coffee



at

**Bellport
Country Club**

always open to
the public.

The favorite for
pre- and post-show
dining.

Conveniently located between
Gateway Playhouse and
Patchogue Theater on
SOUTH COUNTRY ROAD, in
BELLPORT VILLAGE

Available for groups and
small parties.

FOR RESERVATIONS
CALL

286-4227

Also visit

Irish Coffee



on CARLETON AVENUE
in EAST ISLIP

277-0007

LongIslandArt.Net

Because we are proud of where we live...

211 Mastic Beach Rd.
Mastic Beach,
New York 11951

smitty's
HOME CENTER

True Value

(631) 281-8744
Fax (631) 281-4651

PAPA NICKS PIZZA



Gyros, Salads, Heros, Dinners

Daily Lunch Specials

286-6400

117C-South Country Road, Bellport Village, NY

THE BANK OF NEW YORK

LONG ISLAND REGION

24-hour ATM

BELLPORT BANKING
OFFICE LOCATED AT:

32 Station Road
Bellport, New York 11713

Virginia Asero
Assistant Vice President

(631) 286-4200

Member FDIC 1986 The Bank of New York

Cilantro's

*Eclectic New American Cuisine
Fine Dining and Cocktails*

- Pre Theater Dinner Specials -

- Live Jazz on Friday Nights -

- Prix Fixe Menu Always Available -

Join Us Before or After

The Theater For A

Cocktail, Cappuccino or Dessert

154 Montauk Highway,

Blue Point, New York 11715

Tel. 631-363-0500

Fax. 631-363-0506

www.menisonline.com

WHO'S WHO...

TIMOTHY FORD (*Happy McGuire*) recently finished playing "Riff" in WEST SIDE STORY at Oklahoma Lyric Theatre and he hopes that is the last time he ever has to play a teenager. He has toured with Donny Osmond in JOSEPH. . . Other favorites include THE MOST HAPPY FELLA, MAME, CHESS, and GYPSY.

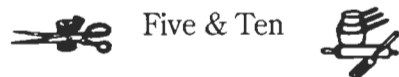
AMY GOLDBERGER (*Precious McGuire*) was last seen as "Daisy Hilton" in Signature Theatre's Washington premiere of SIDE SHOW. Regional credits include: "Narrator" (JOSEPH...), "Hilda" (PLAIN AND FANCY), "Virtue" (ANYTHING GOES), "Valerie" (SMILE), "Little Red" (INTO THE WOODS). "Love to Mom and Dad. Special thanks to Diane and The Harden-Curtis Agency."

EMILY RABON HALL (*Nurse/Mick's Pick*) began performing at age five. She has performed for Lucille Lortel, Joanne Woodward and was cast by Hal Prince in Webber's WHISTLE DOWN THE WIND. Roles range from "Sally Bowles" (Moss Hart winner) to "Patience" in PATIENCE. "The stage is my spirit of place."

SHARI JORDAN (*Chorus/Rita u/s/Shelby u/s*) originally from Raleigh, NC, earned her B.A. from NCSU. Credits: Radio City Rockette, "Tess" in CRAZY FOR YOU (Nat'l Tour), "Gypsy" in GYPSY, "Ziegfeld's Favorite" in WILL ROGERS

THE VARIETY MART

An Old Fashion



Five & Ten

138 Main Street
Bellport, New York 11713

631-286-2210

BELLPORT PAINT & WALLPAPER

COMPLETE PAINT & WALLPAPER SUNDRIES

- PERSONALIZED SERVICE •
- COMPUTER COLOR MATCHING •



631-286-5850

145 South Country Rd.
Bellport, NY 11713

FOLLIES, and "Patty Simcox" in GREASE (NCT). Shari resides in NYC with her husband, A.J. and adorable Dog, IMPY!

NEAL RICHARD LEE (*Johnny Adel*) returns to NCT, having appeared as an "Aggie" and "Dogette" in THE BEST LITTLE WHOREHOUSE IN TEXAS. Other credits: DAMN YANKEES with Tony Randall (Theatre Under The Stars), THE APPLE TREE (Goodspeed Opera House), BRIGADOON (national tour). "Thanks and love to family and friends."

RYAN MELDRUM (*Chorus/Happy u/s*) Around the world, Ryan has appeared in such shows as WHOREHOUSE (NCT), EVITA, WILL ROGERS FOLLIES, PIPPIN, HOW TO SUCCEED... (National Tour)! He has had the opportunity to perform with such stars as Debbie Boone, Barry Williams, and Bob Keeshan (Captain Kangaroo).

JOEL NEWSOME (*Buddy Becker*) played "Frank" in SHOW BOAT (NCT). Off-B'way: KUNI-LEML (Jewish Rep.). Regional: GEORGE M! (Goodspeed Opera), SINGIN' IN THE RAIN (Westchester Broadway Theatre), DAMES AT SEA (San Francisco), JESUS CHRIST SUPERSTAR (Paper Mill Playhouse & Theatre Under The Stars), THE MUSIC OF LEONARD BERNSTEIN (European tour).

MARY ELIZABETH RICH (*Mick's Pick*) Circle in the Square, NYC...graduate acting conservatory. Drama League's Tribute to Liza! Roles: "Arkadina" ... THE SEAGULL (Circle), "Tess"...CRAZY FOR YOU, "Maggie"...42ND STREET (Euro-tour), "Bonnie"... Tony Steven's ANYTHING GOES. Lead Singer. Folies Bergere / Las Vegas. Love/thanks to my angels (Mom/Dad, Er, A.L., Jenny, Tom xo).

DEBRA DENYS SMITH (*Mick's Picks/Nurse u/s*) is thrilled to be doing this production of STEEL PIER! Regional: CRAZY FOR YOU (Paper Mill Playhouse, PBS "Great Performances"), A CHORUS LINE (Judy), WIZARD OF OZ (Glinda), FORUM (Gymnasia), WILL ROGERS FOLLIES. European Tours: FAME!, CRAZY FOR YOU. Radio City Rockette in New York.

TODD M. SMITH (*Swing*) Originally from Lansing, MI, Todd has had the good fortune to travel extensively across the U.S., Europe and Asia in his short but fun career. Favorite shows include WEST SIDE STORY (Baby John), A CHORUS LINE (Mark), SHE LOVES ME (the Busboy) and GREASE.

KATHARINE STEERS (*Chorus/Dora u/s, Dance Captain*) appeared on Broadway with David Copperfield's DREAMS AND NIGHTMARES.

BRICK HOUSE BREWERY & RESTAURANT



PLAYHOUSE DINNER SPECIALS

(Available Sunday-Thursday 4pm-10pm)

Opening Act:

Tossed Salad, Caesar Salad
or Soup

Main Stage:

Choice of:

- Sesame Crusted Tuna Steak
- Rigatoni ala Vodka
- Sliced Marinated Steak
- Apple Glazed Roast Loin of Pork
- Homemade Meatloaf
- Chicken Marsala
- with potatoes & vegetable -

Final Act:

- Coffee or Tea Plus
- Choice of: Chocolate Stout Cake,
Cheesecake or Carrot Cake
- (All soups and desserts made here
on the premises)

Complete Dinner Price...

\$12.95

67 W. Main St., Patchogue
447-BEER

ALL MAJOR CREDIT CARDS
Visit us on the web at
www.brickhousebrewery.com

WHO'S WHO...

She has performed in Both Christmas and Easter Shows as a Radio City Rockette. Other credits include VICTOR VICTORIA, OKLAHOMA!, WEST SIDE STORY and THE WILL ROGERS FOLLIES. "Love to family and friends!"

FELICITY STIVERSON (*Swing*) comes directly from Germany (GREASE). Other credits: WEST SIDE STORY (Europe), regional productions of ...FORUM, the new musical SCROOGE and in original workshops of Chicago and Applause with Ann Reinking. Felicity graduated from Barnard College, Columbia University with a B.A. in English.

TEE SCATUORCHIO (Director/Choreographer) Past NCT productions include OKLAHOMA!, SOUTH PACIFIC, JOSEPH AND THE AMAZING TECHNICOLOR DREAMCOAT, THE SECRET GARDEN, SHOW BOAT, FIDDLER ON THE ROOF, THE KING AND I, SEVEN BRIDES, JESUS CHRIST SUPERSTAR, SHENANDOAH and LA CAGE AUX FOLLES. At off-Broadway's Circle Rep, Tee has directed and choreographed the revival of THREE POSTCARDS by Craig Lucas, ROSE QUARTET, and CURTAIN AT EIGHT. On Broadway, he assisted Arthur Laurents in GYPSY and NICK AND NORA. International and regional credits include BRIGADOON, HERRINGBONE, ROBBER BRIDEGROOM, and THE REAL VARIETY SHOW at London's Barbican Center, American Music Theatre, Paper Mill Playhouse, and North Shore Music Theatre. Tee also owns Tee & Jam, Inc., a small production company which specializes in video and live industrial shows which has recently expanded to Europe. His many clients include Mercedes, General Motors, Chrysler, Sony, and Microsoft. His work has won two Gold Medals at the New York Film Festival, non-Broadcast series. His training began at American Conservatory Theatre, and Tee is a graduate of the University of San Francisco and the Neighborhood Playhouse.

JULIE FLINCHUM (*Music Director/Conductor*) has been with NC Theatre since 1984, working closely with conductor McCrae Hardy. Musical director credits include: THE DEVIL'S DREAM (Barter Theatre), INTO THE WOODS (RLT), THE HOSTAGE (Playmaker's Rep), and international tours of A CHRISTMAS CAROL (TIP). Her work as orchestrator and arranger includes such clients as Ipo Productions, the Jimmy V. Celebrity Classic, and Going Barefoot, Inc. "Love and thanks to David."

WILLIAM C. RODGERS (*Scenic Designer*) earned his BA in Theatre from Wake Forest

University and his MFA in Theatre Design and Technology from UNC-G. He has designed and painted over 130 different productions in the Triangle Area, including a dozen touring productions for the National Opera Company. Bill was the resident scenic designer at the Raleigh Little Theatre for 10 years and was on the faculty at Meredith College for six years. In 1999, he joined the team at Alternate Route Studios as the Lead Scenic Artist and Designer. This is his first design for the North Carolina Theatre.

DAVID NEVILLE (*Lighting Designer*) is the Resident Lighting Designer for North Carolina Theatre, Music Theatre of Wichita and Santa Barbara Civic Light Opera. In addition, he regularly designs for Theatre Under the Stars in Houston and The Ordway Music Theatre in St. Paul. He has designed tours of 42ND STREET, THE RAINMAKER, A CHRISTMAS CAROL, FIVE GUYS NAMED MOE and A CHORUS LINE. Other theatres he has designed for include North Shore Music Theatre, Paper Mill Playhouse, Portland Center Stage, George Street Playhouse, and the York Theatre.

JONATHAN PARKE (*Sound Designer*) has come to theater from the Rock 'n Roll side of life. JP has ten years of regional one-nighters to Bus & Truck experience working for bands on their way up and on their way to oblivion. The first non-equity tour of CRAZY FOR YOU was his initiation to Broadway Theater Bus & Truck tours. Since then he has become a sound designer and operator. JP has worked for NETWORKS on their tours of THE SOUND OF MUSIC, CIRQUE INGENIEUX (music by Kitaro), ANNIE (lyrics and direction by Martin Charmin), and most recently JEKYLL & HYDE. JP has been the resident sound designer for The North Carolina Theatre for the last 2 years.

LEE A. WILKINS (*Associate Choreographer*) Broadway National Tours: CATS, HOW TO SUCCEED... Direction/Choreography: THE MUSIC OF ANDREW LLOYD WEBBER (European Tour), Choreography: FABLES IN SLANG (off-Broadway), JAYSON (off Broadway), JUST SO (Goodspeed). North Carolina Theatre: LA CAGE, THE MUSIC MAN, OKLAHOMA! (Assistant Choreographer). Lee is a graduate of Point Park College with a B.F.A. in Musical Theater as well as a minor in Dance. "Thanks to Tee and Kerri. Love always to Josh and Wayne."

KERRI QUINN (*Associate Choreographer*) has been on staff as a choreographer at Radio City Music Hall for the past four years, where she

has just produced her first original work for the Rockettes. Her choreography has also appeared on "Saturday Night Live", Comedy Central's "Viva Variety", and "The Late Show with David Letterman". In addition to choreographing, Kerri has performed internationally in theatre, television, and film.

DEBORAH D. RAULERSON (*Production Stage Manager*) is thrilled to be reigning as "Princess" of the STEEL PIER tour. After 7 musicals in 7 weeks, one nighters is easy. Her previous tours include the Mainstage Productions tour of HELLO, DOLLY! last year. Debbie sends love to her family and Chris for their continued support. "Here's to making the best better across America!"

A.J. SULLIVAN (*Assistant Stage Manager*) is thrilled to be included in NCT's STEEL PIER. Other Credits: WIZARD OF OZ Nat'l Tour with Mickey Rooney, "Todd" in PERO-DACTYLS, "Tybalt" in ROMEO & JULIET, "Bela Zangler" in CRAZY FOR YOU, where he met his beautiful wife Shari.


MAINSTAGE PRODUCTIONS, LLC recently produced the national tour of HELLO,

DOLLY!, and co-produced THE GOODBYE GIRL, starring Eddie Mekka, A CHRISTMAS CAROL and MIRACLE ON 34TH STREET. Principals Paul Bartz and Terry Kippenberger as owners of Mainstage LLC, a booking agency, have been involved in hundreds of national tours including MOON OVER BUFFALO starring Gavin MacLeod, SUNDAY IN THE PARK WITH GEORGE, INTO THE WOODS, THE ODD COUPLE starring Jamie Farr and William Christopher, BUDDY: THE BUDDY HOLLY STORY and BIG RIVER.

THE NORTH CAROLINA THEATRE (NCT) is a professional musical production company based in Raleigh, North Carolina. For 17 years The NCT has reproduced the greatest Broadway shows using the combined talents of Broadway veterans and regional stand-outs. In addition to producing musicals, The North Carolina Theatre operates Kids On Broadway, a world class theatre training program. Several graduates are now acting on Broadway and in Hollywood - there are many more to come. The NCT's Artistic Director and frequent guest actor and director is twice-Tony nominated Terrence Mann.

Pine Grove Inn

On The Swan River



est. 1910

Open Weekdays
11:30 A.M.

Saturday
11:30 A.M.

Sunday
12:00 P.M.

EARLY BIRD SPECIALS

Monday thru Saturday, 3 p.m. to 6 p.m.,
Sunday 12 p.m. to 5 p.m.

DINNER

served 3 p.m. to 10 p.m.
Weekdays & Saturdays
Sundays 12 p.m. to 9 p.m.

LUNCH

Monday thru Saturday,
11:30 a.m. to 3 p.m.

Chapel Ave. & First Street • East Patchogue, NY
475-9843

OPEN WEEKDAYS 11:30 AM • CLOSED TUES. • SAT. 11:30 AM • SUNDAY 12 PM

Directions: LIE to Exit 64, Route 112 South to Montauk Hwy. (27A). Make a left (East) on Montauk Highway to fork in road. Take right side of fork then immediate right onto Chapel Ave.

OPEN 6 DAYS A WEEK CLOSED TUESDAY

STEEL PIER Production Staff

Producers Mainstage Productions, LLC & The North Carolina Theatre
 General Managers Paul Bartz, Terry Kippenberger
 Director/Choreographer Tee Scatuorchio
 Associate Choreographers Kerri Quinn & Lee Wilkins
 Music Director/Conductor Julie Flinchum
 Company Manager Jere S. Boyer
 Production Stage Manager Deborah D. Raulerson
 Technical Director/Head Carpenter Tim Fandrei
 Sound Engineer Paul Gallanter
 Master Electrician Sean Roberson
 Assistant Technical Director/Flyman E. John Williford
 Wardrobe Supervisor Karen Chack
 Assistant Stage Manager/Property Master A.J. Sullivan
 Dance Captain Katharine Steers
 Lighting Designer David Neville
 Scenic Designer William C. Rodgers
 Sound Designer Jonathan Parke
 Hair & Make-up Designer Patti DelSordo
 Sound Equipment One Dream Sound Co.
 Lighting Equipment BN Productions
 Scenery Alternate Route Studios
 Costumes Goodspeed Opera House
 Bus Company Schrock Tour and Charters, Inc.
 Truck Company Gateway Candlewood, International
 Bus Drivers Frank Flowers, Chance Brick
 Truck Drivers Billy Thurston, Charlie Fox
 Insurance Marsh & McLennan
 Legal Council Steven J. Kramer, Esq.
 Accountants Costin, Updegrove & Combs
 Graphic Design/Printing Cameo Publishing Group



The actors and stage managers employed in this production are members of Actors' Equity Association, the union of professional actors and stage managers in the United States.

ssdc

The Director-Choreographer is a member of the Society of Stage Directors and Choreographers, Inc., an independent national labor union.

Rehearsed at the New 42nd Street Studios, NY, NY

Exclusive Tour Direction by:
 Mainstage L.L.C.
 Paris, VA: 540-592-9573
 St. Louis, MO: 314-962-4478
 New York, NY: 212-398-3170

WARNING

The photographing or sound recording of any performance or the possession of any device for such photographing or sound recording inside this theater, without the written permission of the management, is prohibited. Violators will be ejected and may be liable for monetary damages. Please turn off all cellular phones and beepers before the production begins.

THANK YOU FOR YOUR COOPERATION

Swan Bakery

"Serving the Community Since 1946"

Official Baker to the Gateway Playhouse

Guy J. Gagliano • Robert E. Roode

15 South Country Road
 East Patchogue, NY 11772
 Tel. (631) 475-9626



Dinner Nightly 5 P.M.
 (631) 567-0033
 Pamela Raymond
 Richard Stafford
 199 Middle Road
 Sayville, NY 11782



Enjoy some here Tonight!
 VISIT THE WINERY

Osprey's Dominion Vineyards, Ltd.
 44075 Main Road, Peconic, NY 11958
 (631) 765-6188 • Fax: (631) 765-1903

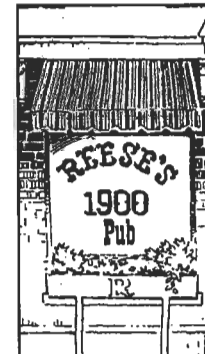
(631) 475-1790-1791
 Fax (631) 475-1807

Emergency Boarding
 Service
 Call 289-1524



GLASS-MIRRORS-PLEXIGLASS-STORE FRONTS
 AUTO GLASS-INSURANCE CLAIMS

RON HENTHORNE
 Manager
 7 Railroad Ave.
 Patchogue, NY 11772



Pub Fare That Will
 Make Your
 Tongue Smile

Relax After The Show
 Kitchen Open 11AM to
 11PM, Bar 'til 1AM
 Closed Sun.

Just steps from Theater parking
 70 North Ocean Avenue
 Patchogue
 (631) 289-1900

Before or After The Show
 Late Night Dinner • Dessert and Coffee

All Baking
 Done On
 Premises



Breakfast,
 Lunch and
 Dinner

Open 7 Days
 6:00 AM - 2:00 AM

Daily Specials

ROYAL OAK
 Diner - Restaurant

Station Road and Sunrise Highway - Bellport, New York 11713

TEL. (631) 286-5757

THE NUTCRACKER

presented by

OVATIONS
 DANCE ACADEMY

in conjunction with

The Brookhaven
 Youth Orchestra

Dec. 2 and 3,
 1:00 p.m. and 7:30 p.m.
 at The Patchogue Theatre for the
 Performing Arts

For Ticket Info Call
 Oventions Dance Academy

Director: Orlando Peña
 631-218-0315



OUR FALL SEASON CONTINUES...

Gateway Performing Arts continues its first full year of presenting quality entertainment at The Patchogue Theatre For The Performing Arts. The Fall Season will include popular musicals, concerts, an acclaimed folk dancing troupe – even a circus is coming to town.

Clowns, acrobats, and performing animals take the Patchogue stage for three days when **Vidbel's Olde Tyme Circus** makes its return October 20-22. The lobby will become a Midway selling popcorn, souvenirs, candy and snowcones. The Vidbel Family can make children of all ages smile with death-defying aerialists, motorcycle riding bears, and of course...clowns! This is how the circus used to be, when family troupes toured the country.

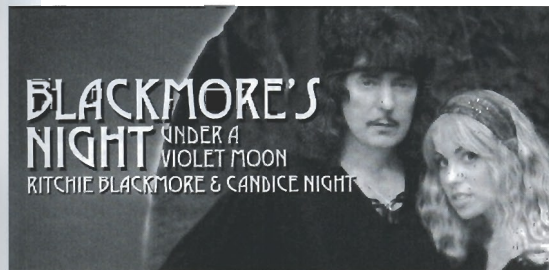


The miracle of **Godspell** lives on with a new musical pulse for today's generation from November 1-5. This energetic show, produced by Gateway Playhouse, features updated musical arrangements and input from Tony winning creator Stephen Schwartz himself! The bouncy score features the #1 Billboard hit "Day By Day."

On November 12, Patchogue Theatre welcomes **Ballet Gran Folklorico de Mexico**. This company of 35 singers, dancers, and musicians present a colorful, rhythmic, pulsating show in a swirl of exquisite authentic costumes, depicting Mexico of the past and present through folk dances including the heart-pounding "Dance Of The Deer."



A trio of concerts in November provide something for every musical taste, from rock to renaissance. **Martha Reeves And The Vandellas** perform their legendary top-40 hits on November 18 including "Dancing In The Street," "Love Is Like A Heat Wave" and "Jimmy Mack."



BLACKMORE'S NIGHT UNDER A VIOLET MOON
RITCHIE BLACKMORE & CANDICE NIGHT

On November 24 **Blackmore's Night**, featuring former Deep Purple guitarist Ritchie Blackmore and gold record lyricist and vocalist Candice Night play Renaissance-era inspired selections from their albums *Shadow Of The Moon* and *Under The Violet Moon* (come dressed in medieval garb and receive a special gift) and on November 25 hear **Ratdog**, composed of members from **The Grateful Dead**, as they play songs from their brand new first album, *Evening Moods*.

Tickets for all Patchogue Theatre events are on sale now at all three Gateway locations in Bellport, Patchogue and Smithaven Mall. Or call 286-1133 or check us out online at www.4tixnow.com. Tickets are also available at all ticketmaster ticket centers including Tower Records, American Video and The Wiz stores. Online at Ticketmaster.com. To charge tickets by phone, call (631) 888-9000.

CAVANAUGH'S

"Let's Have Fun"

Est. 1986

◆ New Smoke-Free Dining Room ◆

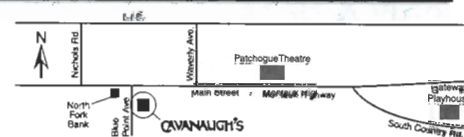
Serving Lunch Daily Starting at 11:30 • Dinner Served Every Night
Dining Room Open Sunday - Thursday Till 11 PM
Friday And Saturday Till 12 Midnight

DINING SPECIALS

Mondays - 2 For 1 Chicken Wings
Tuesdays - 20 Oz. Porterhouse \$10.99 • Thursdays - Prime Rib \$11.99

Kitchen Open

Sunday - Thursday Till 12 Midnight
Friday and Saturday Till 2 AM
17 TVs - Quick Draw



255 Blue Point Avenue, Blue Point

631-363-2666

www.eveningout.com/cavspub • www.bluepoint.org

ACTING AND MUSICAL THEATRE TRAINING

*Classes now
enrolling!*

all levels of acting for all ages thru adult

GATEWAY ACTING SCHOOL

LEARN FROM THE PROFESSIONALS!

286-9014



2001 Gateway Playhouse Survey

Gateway Playhouse is planning its 2001 Season. As usual, we will be awaiting the newest releases from Broadway to present to you. These exciting options are: RAGTIME, SMOKEY JOE'S CAFE, CATS, FOOTLOOSE and MISS SAIGON. In addition to these shows, we have listed below other musicals also under consideration. Please let us know ten shows you'd like to see by numbering them from one to ten, (one being your favorite.)

- | | |
|--|--|
| <input type="checkbox"/> Funny Girl | <input type="checkbox"/> Oliver |
| <input type="checkbox"/> The Scarlet Pimpernel | <input type="checkbox"/> Mame |
| <input type="checkbox"/> High Society | <input type="checkbox"/> Oklahoma |
| <input type="checkbox"/> On the Town | <input type="checkbox"/> Fiddler on the Roof |
| <input type="checkbox"/> No, No, Nanette | <input type="checkbox"/> Hair |
| <input type="checkbox"/> Porgy & Bess | <input type="checkbox"/> She Loves Me |
| <input type="checkbox"/> Some Like it Hot | <input type="checkbox"/> Candide |
| <input type="checkbox"/> Gigi | <input type="checkbox"/> Personals |
| <input type="checkbox"/> Zorba | <input type="checkbox"/> Annie |
| <input type="checkbox"/> Bye Bye Birdie | <input type="checkbox"/> Pirates of Penzance |

Please hand this in to our Box Office Staff. Thank you for your help!

Exciting Holiday Entertainment!



MOSCOW STARS ON ICE PRESENTS
Alice On Ice and selections from The Nutcracker
featuring Russian All-Star Ice Skating Olympic Champions
December 8-17 • \$29.50, \$34.50, Children \$20

This first ever production on ice of Lewis Carroll's timeless children's classic is performed by World and European Olympic Champions. With extraordinarily sumptuous settings, newly created costumes of exceptional imagination, and a unique musical score, this production will enchant and thrill both children and adults.

Back for a second spectacular year!

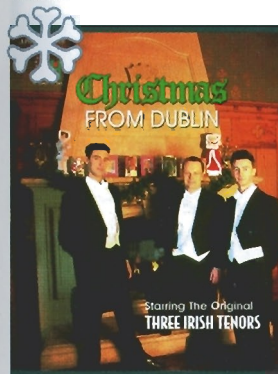
HOLIDAY HOP!

December 18 & 19, 8:00 • \$29.50, \$34.50

Hop back in time and listen to the music that helped define rock and roll and doo-wop of the 50's and 60's. Join us for this unforgettable Christmas concert and hear three of the most influential vocal groups of their era as they sing a mixture of their top hits and your favorite holiday songs. A thoroughly enjoyable nostalgic holiday treat! Featuring the timeless music of **THE MARVELETTES**, **THE PLATTERS** and Cornell Gunther's **COASTERS**.



the Marvelettes, the Platters and Cornell Gunther's Coasters



THE ORIGINAL THREE IRISH TENORS

Christmas from Dublin

December 20, 3:00 & 8:00 • \$29.50, \$34.50

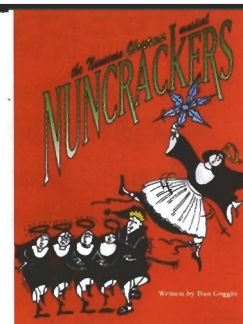
Celebrate the holidays with a genuine Irish Christmas! This lavish holiday production will enchant you with its age-old traditions and reminiscences of an Irish Childhood. Full of wit, charm, music and dance. Joining Niall Morris, James Nelson and Matthew Gilsean will be soprano Jacqueline Whelan, comedian Jimmy Kennedy and a host of Irish dancers and musicians.

NUNCRACKERS

The Nonsense Christmas Musical
starring Dody Goodman

December 22 & 23 • 2:00 & 8:00 each day
\$29.50, \$34.50, Children \$20

Those wacky nuns from Mount Saint Helen's Convent are at it again. This time they are putting on a holiday TV special! Dody Goodman stars as Mother Superior in this new Nonsense adventure into the hilarious and the absurd.



CALL 286-1133 or 1-888-4TIXNOW

All shows subject to availability and date and/or time change. All tickets subject to handling and facilities charges. Multi-Artist acts subject to lineup changes.

Tickets available at all ticketmaster ticket centers including Tower Records, American Video and The Wiz stores.

ticketmaster Online at Ticketmaster.com. To charge tickets by phone, call (631) 888-9000.

Bay Street Theatre

"one of the country's pre-eminent regional theatres"
- CBS News Sunday Morning



New and Classic Plays & Musicals,
Cabaret, Chamber Music, Concerts,
Play Readings, Special Events,
and Theatre in the Schools.



For 2000 Season Brochure or Ticket Information,
Please Call: 725-9500

Save the date! Summer Gala Benefit Bash

With guest auctioneers Julie Andrews, Alex Baldwin, and Chevy Chase

Saturday, July 8 Call 725-0818

ORDER BY PHONE **(631)725-9500** ON THE LONG WHARF, SAG HARBOR

COLDWELL BANKER

JOHN ASHLINE

Licensed Associate Real Estate Broker

(631) 289-1400 BUS., (631) 654-5001 FAX
ashline@coldwellbanker.com E-MAIL

BELLBROOK REALTY, INC.
66 MEDFORD AVENUE
PATCHOGUE, NY 11772

Each Office is Independently Owned and Operated



CALL FOR SUMMER/FALL
REGISTRATION

PRE-SCHOOL THRU ADULTS • FAMILY DISCOUNTS

654-8858

25 PATCHOGUE-YAPHANK ROAD • EAST PATCHOGUE

Our students have performed at the
Gateway Playhouse Mainstage and Children's Theatre

JIM'S DELICATESSEN

2478 Montauk Highway
Brookhaven, New York
(Located next to the firehouse)

286-2333

Original Home of
the Buy a Pound,
Get a Pound Free Salad

Hot and Cold Catering,
Breakfast and Hot Lunch,
Specialty Sandwiches,
Homemade Soups and
Salads, Wraps

OPEN DAILY 5AM - 10PM

Swezey

FUEL CO., INC. - EST. 1919

Suffolk's Largest Family
Owned Oil Company

- Automatic Oil Delivery Service
- 24-Hour Emergency Service
- Budget Plans That Pay You Interest
- Expert Installation Of Boilers,
Burners, Hot Water Heaters &
Pool Heaters



475-0270

51 RIDER AVE., PATCHOGUE

Ruband
Funeral Home, Inc.
OUR REPUTATION FOR 'EXCELLENCE' HAS ENDURED SINCE 1856
475-0098
500 North Ocean Avenue; Patchogue, New York 11772
Proudly Supporting the Arts
that Enrich Our Lives
A FAMILY-OWNED Funeral Home - The Romeo Family of Patchogue
Discover how affordable 'Excellence' can be!

Mayer's
FLOWER COTTAGE
Family Owned Since 1929
"We Express Your Feelings -
Beautifully"
400 Medford Ave., Patchogue
(One Block North of Sunrise Highway)
(631) 475-1779



COLEMAN CESSPOOL SERVICE, INC.

ART COLEMAN

475-1733 • 878-2010

Family Owned and Operated
For Over 50 Years

1 Chapel Avenue, East Patchogue, New York 11772

- Dedicated to Honest & Reliable Service •
- Precast Cesspools Installed •
- Portable Toilet Rentals •

ROE AGENCY INC.

OVER A CENTURY OF COMMITMENT
Since 1898

**PERSONAL AND
COMMERCIAL INSURANCE
PROPERTY
CASUALTY
LIFE
HEALTH
FINANCIAL SERVICES**

Walter A. Roe, President
Patricia A. Mankowski, VP and Secretary
Virginia Flynn, VP and Treasurer

125 EAST MAIN STREET
PATCHOGUE, NY 11772-0970
475-4000
FAX 475-7648
E-MAIL: roe@nais.com



Old Inlet Inn



Fine Dining

Dinners from 5:00 p.m.
Sunday Brunch 12 - 3:00 p.m.
Sunday Dinner 3 - 9:00 p.m.
Closed Mondays

Ten Minutes From The Beautifully Renovated Patchogue Theater

Show Tune Sing-A-Longs on
Fri. with Jim Ahrend and others
at the Piano 8:30 p.m. - 12:30 a.m.

Walter A. Roe, Prop. Erik C.W. Brown, Chef

108 So. Country Road, Bellport
286-2650

10% Entree Discount
with Theatre Tickets

PATCHOGUE THEATRE for the PERFORMING ARTS STAFF

Executive Producers Ruth and Stan Allan
Producer Paul Allan
Associate Producer Jeff Bellante
General Manager Gale Edwards
Managing Director Timothy Wilkins
Technical Director Brodie Steele
Master Electrician Christopher White
Box Office Manager Nancy Kana
House Managers Kelly Adee, Elizabeth Bender, Laurie Parr
Group Sales Nadine Hazard
Box Office Staff Jennifer Fragano, Danielle Frasca, Jodi Grega,
Gladys Hawkins, Matt Kirk, Scott Maguill, Sarah Jean Miller
Administrative Assistant Janet Trahan
House Staff Doug Bernhard, Bob Coupe, Cathy Esposito, Don Harrison,
Earlene Johnson, Mil Kana, Joe Kelly, Robert Nofi, Chet Parr, Theresa Pavanello
Maintenance/Landscaping Supervisor Bob Nofi
Concessions Manager/Production Photographer Mil Kana
Sound Consultant Dominic Sack
Publicist Linda Unger
General Counsel Ann L. Nowak & Associates

Gateway Playhouse would like to thank our volunteer staff for their
dedication and support. It is much appreciated.

Marie Rachek - Head Usher

Ushers - Carmela Aiosa, Missy Atchue, Olga Belz, June Budd, Anne Burke, Martha DeRuiter,
Mary Fox, Irene Fritz, Marian Harrison, Howard Lehman, Alice Rucker, Terry Seng, Pat Siegel,
Cami Smith, Kim Stasheff, Gail Spaulding, Rita Wehner, Carol Weinstein, Patricia Yurdiga

IF YOU WOULD LIKE TO JOIN OUR VOLUNTEER STAFF CALL 286-0555

WARNING - The photographing or sound recording of any performance is strictly prohibited.

Gateway Playhouse offers a wireless sound enhancement system
for the hearing impaired. Inquire at the box office for more information.

FIRE NOTICE The exit indicated by a red light and sign nearest to the seat you occupy, is the shortest
route to the outside. In the event of fire or other emergency, please do NOT run. WALK to that Exit.
However, under normal circumstances, when leaving the Theatre, use the center rear exits. SMOKING
is prohibited in the BUILDING, as required by the Suffolk County NO SMOKING Ordinance. Smoking in
any area designated "No Smoking" renders the offenders subject to a fine, or imprisonment, or both.



Casual Family Dining

**Come Join us Before
or After the Show**

Senior Menu Always Available
Children's Menu Only \$2.99

7 a.m. - 10 p.m. 7 day/week

240 East Main Street,
Patchogue

654-3641



Richard York

OF PATCHOGUE



631-475-1047
14 South Ocean Ave.
Patchogue
Four Stores
South of Main St.

Quality Footwear for the Entire Family Since 1927

- Helpful, Friendly Service
- Areas Largest Selection
of Sizes & Widths AA-EEEE

Rockport, Easy Spirit, Florsheim, New Balance,
Stride Rite, Selby, Teva, Timberland, Skechers,
Munro, Dexter, Keds, Reebok, Dyeables, Topsider,
Soft Spots, Clarks, etc.

10% OFF any purchase
with ad only

Excludes Easy Spirit, Dr. Martens & other offers. Expires 12/31/00

VOLUNTEERS NEEDED

Interested in being an usher or volunteer technician?

Call **286-0555**



Bryan McGowan, 5:30 - 10:00 a.m.

Join Your **wlim** STEREO Family

Monday - Friday



Jack Ellsworth,
"Memories in Melody"
10:00 a.m. - Noon



Bob Stern, Noon - 3:00 p.m.
1-2 BDWY. Hollywood Show

wlim STEREO

1580 AM

Long Island
Music

- Big Bands
- Popular Standards
- Local & Community News
- Daily Prizes

GLENN MILLER

FRANK SINATRA

ROSEMARY CLOONEY

BARBRA STREISAND

NAT KING COLE

DORIS DAY

BENNY GOODMAN

TONY BENNETT

BING CROSBY

20 CENTURIES IN THE MAKING

GODSPELL

2000

*The miracle lives on
with a new musical pulse
for today's generation*

TM

believe...

November 1-5

at


PATCHOQUE
THEATRE
FOR THE PERFORMING ARTS