



## Bringing New York Closer To The World.

American loves New York. And we show it every day with over 200 flights from six tri-state area airports to nearly 260 cities in 40 countries worldwide. For more information call your Travel Agent or American at 1-800-433-7300, or visit us on the web at [www.americanair.com](http://www.americanair.com)

**American Airlines**  
*American Eagle*

LA GUARDIA • JFK • NEWARK • LONG ISLAND MACARTHUR • WHITE PLAINS • NEWBURGH STEWART

American Airlines and American Eagle are registered trademarks of American Airlines, Inc. American Eagle is American's regional airline associate.

# Gateway

## PLAYHOUSE

*50th Anniversary Season*

Pippin

The Best Little Whorehouse In Texas

Big

Yankee Doodle Dandy

South Pacific

The Will Rogers Follies

**GATEWAY**  
PERFORMING ARTS

summer  
2000 playbill





**Brookhaven**  
 Memorial  
 Hospital  
 Medical  
 Center

101 Hospital Road  
 Patchogue, NY 11772  
**(631) 654-7100**

Physician/Dental  
 Referral Service  
**(800) 694-2440**

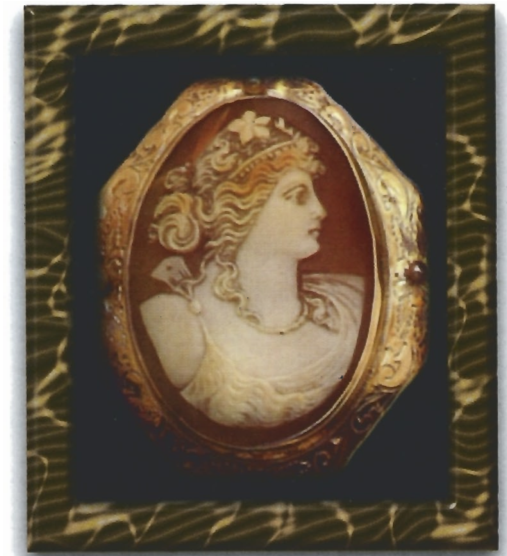
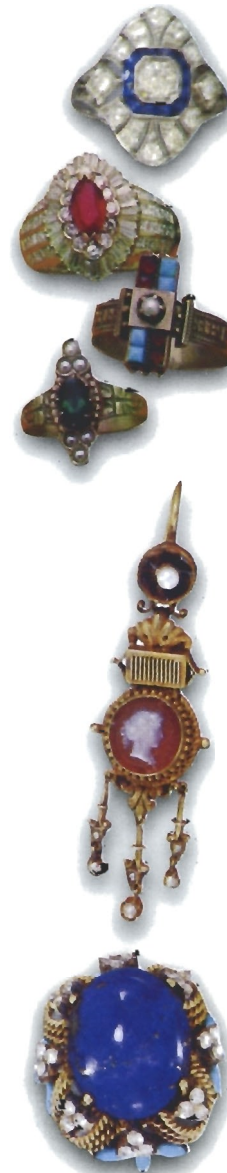


Visit our website at:

<http://www.BrookhavenHospital.org>

### ***Our Patient-Centered Services Include:***

- Area Trauma Center
- Behavioral Health
  - Inpatient PsychCare
  - Partial Hospitalization Program
  - Outpatient PsychCare
- Cardiac Rehabilitation
- Community Health Centers
- Community Wellness Programs
- Contenance Care
- Hemodialysis Center
- Home Health Care
- Hospice
- Maternal/Child Services
- Neuroscience Center
- The New Vision Program
  - Emergency Medical/Surgical Detoxification
- Pain Management
- Physical Rehabilitation
- Radiological Imaging Services
- Sleep Disorder Center
- Women's Health Services



### **TREASURES OF YEARS GONE BY**

The warmth of gold and the artistry of radiant platinum... We invite you to come in and select from our collection of new and period treasures. Specializing in design and remounts.

***Turn your unwanted jewelry into cash.***

*W<sup>m.</sup> J. O'Neill*

Sales Exchange Co., Inc.  
 Jewelers and Collateral Loanbrokers  
 One East Main Street • Patchogue  
 631.289.9899

*Mention this ad for 10% discount on purchase*



From the Sound to the Sea...

We've been helping  
choreograph the financial futures  
of neighbors like you.



The Suffolk County National Bank

Equal Opportunity Lender

[www.scnb.com](http://www.scnb.com)

Member FDIC

## A Note From the Producer

*This year marks Gateway Playhouse's 50th anniversary and the start of a new millennium. We're proud of our history and excited about our future.*

*We opened our season with an old favorite that has a new twist — Pippin, the story of a young man's search for the meaning of his life, with a new ending and a new twist added by Stephen Schwartz, and dazzling Bob Fosse-style choreography.*

*Today we present The Best Little Whorehouse In Texas, a rollicking political satire recounting the rise and fall of the Chicken Ranch, a Texas pleasure palace. It is directed by Phillip George, who grew up near the real Chicken Ranch, and who has directed the Forbidden Broadway spoofs in Manhattan.*

*The world premiere of Yankee Doodle Dandy brings us into July. This new musical about the life of the legendary Long Islander, George M. Cohan, will have audiences singing along to "Give My Regards to Broadway" and "You're a Grand Old Flag". We're planning a special performance for Independence Day!*

*South Pacific, the classic Rodgers and Hammerstein love story will sweep you off to an island paradise this summer. This show features some of the most beautiful music ever written for the stage, including "Some Enchanted Evening" and "Younger Than Springtime".*

*The ideal family musical Big is too big for Gateway Playhouse, so we are staging it in The Patchogue Theatre for the Performing Arts beginning August 9th. Based on the hit Tom Hanks movie, this story about a boy who gets his wish to become big, is funny, insightful, and touching. It will recapture the feeling of falling in love for the first time.*

*Finally, we bring you The Will Rogers Follies, a combination of homespun wit, beautiful showgirls, burlesque, vaudeville, and a fabulous score encompassing jazz, country, blues, and rock. This production in Bellport kicks off our exciting National tour.*

*Thank you for supporting us in our 50th year of bringing professional theater to Long Island.*

Paul Allan  
Producer



# Now THIS is an OLDIES station!

The Beatles

The Supremes

Elvis Presley

Credence Clearwater Revival

Beach Boys

The Doors

Elton John

The Rascals

The Rolling Stones

Aretha Franklin

103.1 FM

**B103 IS PROUD TO "BEE" PART OF ANOTHER GREAT GATEWAY SEASON**

**B-103**  
Long Island's Oldies

For the best  
& most oldies!  
**103.1 FM**

Open for Lunch & Dinner  
Tuesday through Sunday

LOUIS XVI

Reservations  
Recommended



Voted the No. 1 restaurant overall on LI, as well as No. 1 for Decor – devotees swear it could rival “the Palace of Versailles” – this “extravagant,” “elegant” and “exquisite” “crown jewel” boasts “gorgeous views” of Great South Bay from its “beautiful setting on the water” in Patchogue; indulge in “extraordinary,” “imaginative” New French cuisine “magnificently presented” by an “impeccable” staff; dip into the “kids’ college fund” or “mortgage the house” if you must, but it’s “worth every franc” for such an “incredible dining experience.”

– Zagat Survey 2000 26 28 25 \$57

600 South Ocean Avenue • Patchogue, 654-8970

## THE HARBOR SIDE

*“Incomparable Seafood Restaurant”*

Open 7 Days a Week  
at 11:30 a.m.

All Major Credit  
Cards Accepted.

Complete Dinners  
Everyday.



Highly Recommended:

\*\*\*

Newsday

Daily News

NY Post

The Practical Gourmet

### Complete Lunches\*

Served Mon. – Sat.  
11:30 a.m. – 3:30 p.m.  
Starting at \$8.50

### Complete Early Bird Specials\*

Served Mon. – Fri. 3:30 p.m. – 6:45 p.m.  
Sat. 3:30 p.m. – 6:30 p.m.  
Sun. 11:30 a.m. – 4:00 p.m.  
Starting at \$12.95

### Sunday Specials

Includes: Soup or Salad,  
Potato, Vegetable, Dessert & Coffee.  
11:30 a.m. – 4:00 p.m.  
Starting at \$9.95

\*Above specials not available for groups of 15 or more on holidays. Prices subject to change.

Special Rates for Theatre Groups from 20 to 125. Call for more information.

503 E. Main Street, Patchogue, New York • Located on the corner of E. Main St. (27A) and Phyllis Dr.

(631) 654-9290

*If you're not completely  
satisfied with the performance  
of your bank,*

come into any North Fork Bank branch today  
and find out about the best-performing bank in  
America. The women and men in our branches  
are what really makes North Fork Bank number  
one... the most efficient, hardest working  
bankers in the industry.

**NFB**

NORTH FORK BANK™

Norma Marx, VP/Branch Manager • Patchogue Branch  
Corrinne Newman, VP/Branch Manager • Shirley Branch  
Teri George, AVP/Branch Manager • Blue Point Branch  
Marion Reinhardt, AVP/Branch Manager • Sayville Branch  
Member FDIC

*Fantastic Gardens*

*"Turn our fantastic quality into your fantastic garden"*



*Holiday plants,  
House plants, Annual,  
Perennials and more*

67 Avery Avenue  
Patchogue, NY 11772  
475-7118

**Budweiser**

**On Tap Here  
at Gateway**



Clare Rose

"Distributors of Fine Brewery Fresh Products"



**"We're Patient People"**

**AMATO FAMILY CHIROPRACTIC**  
16-2 STATION ROAD ■ BELLPORT, NY 11713

**631-286-2300**

Infant, Child & Adult Care

Dr. Frank J. Amato

Taking Care of Cast and Crew at Gateway for Over 10 Years

# Bellport CHOWDER HOUSE



*An Eating and Drinking Tradition*

**FULL MENU**

**FULL BAR**

Open Daily For Lunch and Dinner  
Seven Days A Week

Sunday - Thursday till 11:00 p.m. Friday & Saturday till Midnight

**SPECIALIZING IN FRESH LOCAL SEAFOOD  
AT AFFORDABLE PRICES**

*Before and After the Show You'll Want to Meet and Eat At  
THE CHOWDER HOUSE*

**TAKEOUT**

**CATERING**

19 Bellport Lane • Bellport Village • 286-2343

# Bravo



**SEARLES**  
**GRAPHICS**  
INC

Quality Printing and Innovative Designs...  
for all your graphic and printing needs.

56 Old Dock Road • Yaphank, N.Y. 11980 • 631-345-2202  
searles@portjeff.net

Gateway Performing Arts

*in Association with*

Gateway Playhouse

*presents*

SUSANN FLETCHER

STEVE LUKER

*in*



Book by

LARRY L. KING and PETER MASTERSON

Music and Lyrics by

CAROL HALL

*with*

DON BOVINGLOH  
CRAIG MASON

MICHAEL FITZPATRICK  
BRITTANY PIXTON

WANDA L. HOUSTON  
ALEX WIPF

Originally Produced on the New York stage by STEVIE PHILLIPS  
in association with UNIVERSAL PICTURES  
Originally produced by the ACTOR'S STUDIO

Producer  
PAUL ALLAN

Associate Producer  
JEFF BELLANTE

General Manager  
GALE EDWARDS

Casting Director  
ROBIN JOY ALLAN

Lighting Design  
KIM HANSON

Sound Design  
GREG REIF

Production  
Stage Manager  
DAVID TAYLOR  
LONDON\*

Production  
Manager  
KRISTIN HASSETT

Company  
Manager  
STANLEY SCHORR

Costumes Produced by  
Costume World, Inc.  
CHARLES BATCHELOR, *Designer*

Costume Coordinator  
CHERYL RANDAL

Musical Direction  
JEFFREY BUCHSBAUM

Set provided by  
THEATRE UNDER THE STARS

Original Choreography Adapted by  
DAVID LOWENSTEIN

Directed by  
PHILLIP GEORGE

THE BEST LITTLE WHOREHOUSE IN TEXAS is presented through special arrangement with  
Samuel French, Inc., 45 West 25th Street, New York, NY 10022



## CAST

Balladeer .....	GREG LoBUONO *
Angel .....	HEATHER OLT
Shy .....	MICHELLE PRUIETT
Jewel .....	WANDA L. HOUSTON *
Mona Stangley .....	SUSANN FLETCHER *
Linda Lou .....	JENNIFER McCAMISH
Ruby Rae .....	CARRIE E. DEMICCO
Beatrice .....	BRITTANY PIXTON
Dawn .....	ROBIN LEVINE
Ginger .....	REBECCA BRANCATO
Melvin P. Thorpe .....	CRAIG MASON *
Sheriff Ed Earl Dodd .....	STEVE LUKER *
C.J. Scruggs .....	ALEX WIPF *
Mayor Rufus Poindexter .....	DON BOVINGLOH *
Edsel Mackey .....	MICHAEL FITZPATRICK *
Doatsey Mae .....	BRITTANY PIXTON
Chip Brewster .....	MICHAEL FITZPATRICK *
Imogene Charlene .....	JENNIFER McCAMISH
Senator J.T. Wingwoah .....	DON BOVINGLOH *
Governor .....	ALEX WIPF *
Aggies .....	BRAD BASS, JAMES CORROTHERS, DON GARVERICK, BRIAN JOSEPH LAUGHLIN, GREG LoBUONO*, THOMAS PACIO, CRAIG YOCHEM
Reporters .....	CRAIG YOCHEM, BRITTANY PIXTON, THOMAS PACIO

### UNDERSTUDIES

Understudies never substitute for listed players unless a specific announcement is made at the time of the performance

Sheriff .....	MICHAEL FITZPATRICK*
Mona .....	REBECCA BRANCATO
Melvin P. Thorpe .....	DON GARVERICK
Jewel .....	HEATHER OLT
Senator /Governor .....	JAMES CORROTHERS
Doatsey Mae .....	CARRIE E. DeMICCO
Edsel .....	BRAD BASS
Bandleader .....	THOMAS PACIO
Angel .....	JENNIFER McCAMISH
Ginger .....	ROBIN LEVINE

### MUSICIANS

Conductor/Keyboards .....	JEFFREY BUCHSBAUM
Violin/Viola .....	SETH ABRAMS
Guitar .....	TOM GOSLIN
Steel Guitar .....	RICHARD REALANDER
Bass .....	JORDAN JANCZ
Drums .....	JEFF FARRELLO



\*Actors employed in this production are members of Actors' Equity Association, the union of Professional Actors and Stage Managers in the United States.

ssdc

The Director/Choreographer is a member of the Society of Stage Directors and Choreographers, Inc., an independent national labor union.



The Musicians employed in this production are members of the American Federation of Musicians.

## SCENES AND MUSICAL NUMBERS

### ACT ONE

Overture .....	ORCHESTRA
Scene 1 .....	
"Prologue" .....	BANDLEADER
"20 Fans" .....	BANDLEADER & COMPANY
Scene 2 .....	
"A Lil' Ole Bitty Pissant Country Place" .....	MONA, JEWEL & GIRLS
Scene 3 .....	
"Girl You're A Woman" .....	MONA, SHY, JEWEL & GIRLS
Scene 4 .....	
"Texas Has A Whorehouse In It" .....	MELVIN P. THORPE, THORPE SINGERS & DOGETTES
Scene 5 .....	
Scene 6 .....	
"Twenty-Four Hours Of Lovin' " .....	JEWEL & GIRLS
Scene 7 .....	
"Watchdog Theme" .....	DOGETTES
"Texas Has A Whorehouse In It" (Reprise) .....	MELVIN & ENSEMBLE
Scene 8 .....	
"Doatsey Mae" .....	DOATSEY MAE
Scene 9 .....	
Scene 10 .....	
"The Aggie Song" .....	AGGIES
Scene 11 .....	
Scene 12 .....	

### ACT TWO

Scene 1 .....	
"The Sidestep" .....	GOVERNOR & ENSEMBLE
Scene 2 .....	
"No Lies" .....	MONA, JEWEL & GIRLS
Scene 3 .....	
"Good Old Girl" .....	SHERIFF & AGGIES
Scene 4 .....	
"Hard Candy Christmas" .....	ANGEL, LINDA LOU, GINGER, DAWN, RUBY RAE & BEATRICE
Scene 5 .....	
"The Bus From Amarillo" .....	MONA

The World Speaks in Over 1900 Different Languages, but sees in only one...

PHOTOGRAPHY, the universal language

# MICHAELS CAMERA CENTER

18 East Main Street, Patchogue, New York

## 475-4173

Your Total Imaging Center  
Full Digital Capabilities...  
Prints from Any Source!



# Swezey's... A Store On The Go!



*Swezey's...a department store offering everything from the latest fashions for the family to furnishings for the home!*



*Service is key...including free giftwrapping...all the time! You'll find your favorite brand names & prices that will make you smile!*



*Fall 2000 look for the completion of Swezey's new home...a brand new store located at the west end of Main Street in Patchogue!*



*1 Main St., Patchogue, 475-0280  
Open Monday thru Friday 'til 9 pm;  
Sat. 'til 6 pm & Sundays 11:30-5*

*Other Locations:  
Main St., Riverhead;  
3 Village Shopping Plaza, E. Setauket  
Great So. Bay Shopping Ctr., W. Babylon;  
School St., Glen Cove*



## Directing Satire

Phillip George is uniquely suited to directing *The Best Little Whorehouse In Texas*, he's a native Texan (growing up not too far from the real Chicken Ranch) with a long list of satire credits, including 12 editions of the infamous *Forbidden Broadway* revue in New York, Chicago, London, Los Angeles and on national tour.

"I was in New York in 1987 and got an audition for *Forbidden Broadway*, and got the part which they were doing in Boston. While I was in Boston, they lost their choreographer/director and I volunteered to stage a spoof of *Les Miserables*. They liked what I did and the next thing I knew, I was sort of the resident choreographer/director. It just all fit," said George. In 1993 he directed *Whoop-Dee-Do*, off-Broadway, which was seen by legendary producer Cameron Mackintosh, who brought the show to London. "I never saw him, which I think is funny, you'd think you'd have met the guy who brought you over," said George, "but it was a big hit in London and it led to a series of shows at The Kings Head Theater." George is now a resident director at The Kings Head and will be back there this Christmas to direct *The Rose And The Ring*, a new show by Peter Morris. "It was important to me when *Forbidden Broadway* opened on the West End, it was like validation," said George, "although it was ironic that we were spoofing Broadway!" George also teaches at AMDA, and is the Artistic Director of The Musical Comedy Company which produces new shows on a small scale. He is working on a new revue about technology called *Cyberlesque!*...and a musical adaptation of *The Red Badge Of Courage*. "I have several musicals I work on with different writing teams, which are in various stages of progress," he said.

The plot of *Whorehouse*, how the media abuses its power, and politicians' relationship to the public and the media, is a story older than time yet fresh as today's headlines. "Could this be any more contemporary if it tried? It is the Rudy Giuliani story, the Monica Lewinsky story," said George. "And every time you turn on the news, you see the media themselves talking about the abuses of the media! I love doing new shows, and wish I had the opportunity to do more, that is where my main interest is. But I hadn't done a revival of anything in a long time, and I love *The Best Little Whorehouse In Texas*, I think it suits my sense of humor," said George. "When I am doing a satire, I try to look for what the interior monologue is, what is the subtext? I think people recognize the undertone, that they always knew was there, but needed someone to point it out. It is like saying the ugly truth that people already know."

"Something like the Elian Gonzales case is a soap opera being enacted on our behalf, because our lives are not that dramatic. It brings us together as a nation. We become sort of a family over these issues. That is what I like about *Whorehouse*, they are a little family, and for all the satire of the show it is exactly the truth, what life is like. I've become very sentimental after years of doing *Forbidden Broadway*, and the great thing about this show is it has both heart and humor."



### LYONS FUEL OIL CO. INC.

24 Hr. Service est. 1934 Automatic Delivery

23 Station Road • Bellport, New York 11713  
Phone (631) 286-0395 • Fax (631) 286-0396

### CANDY CRAVINGS

128 South Country Road  
Bellport Village, NY 11713  
(631) 286-6100





**COLLINS & MAIN**

Restaurant and Lounge



Sayville's Culinary Crossroads

**"SUPERB"**

- ZAGAT -

Piano Lounge/  
Live Entertainment

Pre-Theater Pre Fixe

100 Old South Main Street  
Sayville

**(631) 563-0805**

**10% Off Dinner**

(excluding beverages)

with presentation of show ticket  
from Summer/Fall 2000 season

**WHO'S WHO...**

**BRAD BASS** (*Ensemble, Edsel understudy*) is very excited to join Gateway Performing Arts. Originally from Ringgold, VA, he moved to New York City to attend the American Musical and Dramatic Academy, from which he graduated in May. Brad would like to thank God for his many blessings and gifts and his friends and family (Mom & Dad) for their undying love and faith. Bubbe Love & Strawberries!

**DON BOVINGLOH** (*Rufus and Senator*) has a multi-faceted background that encompasses directing, writing, acting coach, and corporate spokesperson, as well as an experienced performer in film, television, and theatre. On stage Don has appeared in *THE ODD COUPLE*, *PAJAMA GAME*, *A FUNNY THING HAPPENED ON THE WAY TO THE FORUM*, *COMPANY*, *MYSTERY OF EDWIN DROOD*, *ON A CLEAR DAY YOU CAN SEE FOREVER*, *GREENWILLOW*, *LOVE LETTERS*, with Sandy Duncan. As a theatre director, his productions include *HELLO DOLLY*, *HOW TO SUCCEED IN BUSINESS WITHOUT REALLY TRYING*, *OTHER PEOPLES MONEY*, *MAME*, *THE GIN GAME*, *CHILD'S PLAY*, *CABARET* and most recently, *BABY* at the Pasadena Playhouse in Los Angeles. While living in Los Angeles, Don appeared in over 200 commercials, film, and television roles. Don Bovingloh was one of the original members and a teacher at the prestigious Groundling Theatre Company in Los Angeles which continues to be a training base for many cast members of NBC's "Saturday Night Live." Some of his guest starring roles have been on "Columbo," "Days of Our Lives," "General Hospital," "Murder She Wrote," "Caroline in the City," "Murphy Brown," "The Hogan Family," "Veronica's Closet," "Family Law," "Just Shoot Me," and many more. He continues to meld his theatrical background with a passion for the arts and education through his Improv and Musical Theatre workshop called "POWERPLAY" which he facilitates for theatres around the country. Don is delighted to be making his first appearance at the Gateway Playhouse.

**REBECCA BRANCATO** (*Ginger, Mona understudy*) recently returned to NYC from the European Tour of *WEST SIDE STORY* as Consuelo and the understudy for Anita. She was also in the European Tour of *SOPHISTICATED LADIES*. She is in both *Orpheus* and *Foot & Fiddle* Dance Companies in NYC. Graduated from Oklahoma City University with a Bachelor of Performing Arts Degree. She performed in various regional theaters as (Adelaide) *GUYS & DOLLS*, (Joan) *DAMES AT SEA* and (Hodel) *FIDDLER ON THE ROOF*. My love goes out to God, mom, dad, family, friends and Philippe.

**JAMES CORROTHERS** (*Ensemble, Senator/Governor understudy*) is excited to be back at

**WHO'S WHO...**

Gateway after performing the role of Gerald in their national tour of *ME AND MY GIRL*. Other national tours include *ANYTHING GOES* and a Florida Tour as Greg in *A CHORUS LINE*. James has performed in many theatres and cruise ships around the world and would like to thank his parents for all of their love and support.

**CARRIE E. DEMICCO** (*Ruby Rae, Doatsey Mae understudy*) is proud to be a member of the cast of *THE BEST LITTLE WHOREHOUSE IN TEXAS*. Her stage credits include: *NICKTOONS' ROCKIN' COUNTDOWN* (Host); *PETER THE GREAT* (Katerina, premier); *DIG N TELL* (Rahama, The Tree). Some of her favorite performance opportunities include appearing as a magician's assistant, singing and dancing for the nationally acclaimed swing band, Doc Scantlin and His Imperial Palms Orchestra, and singing original songs for numerous recordings. Special thanks to my amazing family for their undying support and love!

**MICHAEL FITZPATRICK** (*Edsel, Sheriff understudy*) appeared Off-Broadway as Sir Edward Clarke in Moises Kaufman's play *GROSS INDECENCY*, a role he originally played in the San Francisco production at the Theatre on the Square. At ACT, he played Horatio in *ROSENCRANTZ & GUILDERSTEN ARE DEAD*, and Montano in *OTHELLO*. Other regional credits include: Oswald in *KING LEAR*, Frankie in *FOREVER PLAID*, Daniel in *THE COMPLETE WORKS OF SHAKESPEARE (ABRIDGED)*, in the Tony Award-winning season at Utah Shakespearean Festival; Captain Walker in *THE WHO'S TOMMY*; Johnny Brown in *THE UNSINKABLE MOLLY BROWN*, and Guildenstern in *ROSENCRANTZ & GUILDERSTEN ARE DEAD*. Michael has taught acting at PCPA, ACT, and the GEVA Theatre in Rochester, New York. He is a graduate of the actors training program at PCPA and Masters' program at ACT.

**SUSANN FLETCHER** (*Mona, Dance Captain*) made her Broadway debut in *THE BEST LITTLE WHOREHOUSE IN TEXAS* playing the roles of Beatrice, Ruby Rae and Angel. She was seen in the National Tour and on Broadway in the hit revival of *HOW TO SUCCEED IN BUSINESS WITHOUT REALLY TRYING* as Smitty. She had the privilege of playing Miss Adelaide on Broadway in *GUYS AND DOLLS*. She was in the original Neil Simon/Marvin Hamlisch Broadway production of *THE GOODBYE GIRL*, starring Bernadette Peters and Martin Short, in the role of Donna Douglas. Ms. Fletcher was in the original Broadway company of the Tony award winning musical, *JEROME ROBBINS' BROADWAY*, where she recreated some of the theatre's most memorable roles including; Miss Electra from *GYPSY*, Golde from *FIDDLER ON THE ROOF*,

www.gudephotography.com



631-654-8093

**Varney's**

Restaurant

Fresh Seafood Daily  
Marinated Steaks

Mon - Thur 11am - 9pm Fri & Sat 11am - 10pm

Closed Sunday

Located on Montauk Highway in Brookhaven

286-9569

**Debra Canavan**

CLASSICS

Casual Career and Cocktail

Michael stars  
new man  
for Joseph  
theory  
tommy bahama  
jenne maag  
nicole miller  
brighton leathers  
lilly pulitzer  
shoshanna  
A.B.S.  
flax  
and much more

53 Main Street  
Sayville

631.563.9385





# Coming soon to a Performing

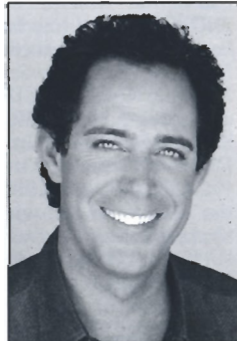
Gateway Performing Arts has launched its first full season as manager of the Patchogue Theatre for the Performing Arts, and producer Paul Allan has lined up an array of shows to appeal to everyone's taste.



On June 17, outrageous comedienne Sandra Bernhard performs her one-woman show "I'm Still Here...Damn It!" Her show challenges her audiences with her own particular brand of perfectly honed satire that takes on the worlds of fashion, religion, music, and celebrity. She skewers conspicuous consumption, slams "waifish alternative folk singers" like Jewel, and trashes celebrity grief over the death of Princess

Diana. No subject, no matter how controversial, is safe. Her show is an original combination of stand-up comedy, performance art, storytelling and singing best described as millennium vaudeville with a razor's edge.

Barry Williams, who played Greg Brady, the "coolest" of The Brady Bunch boys, brings his one-man show *Growing Up Brady* to the Patchogue Theatre for the Performing Arts on June 22. The show is "the total Brady experience, an interactive, multimedia presentation that includes stories, videos costumes, music, and dance," explained Williams, who wrote the show in response to fans who still had an affection for The Brady Bunch. Williams will be available after the show to sign autographs.



On June 23, Patchogue Theatre hosts Johnny Maestro and the Brooklyn Bridge, the gold record band whose song "The Worst That Could Happen" is a radio classic. Jim Webb's powerful vocals and the band's trademark

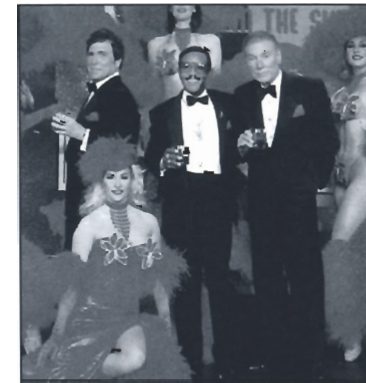
# Arts Theatre near you!



*And Sammy* is for you. This spectacular eye-popping show features Duke Hazlett as Frank Sinatra, Dave Michaels as Dean Martin and Johnny Davis Jr. as Sammy Davis Jr. in a revue celebrating the originals' friendship, talent, and cool attitude. The trio, backed by a four piece band, recreates those legendary evenings at The Sands complete with gorgeous, leggy Copa Girls.

horn arrangements have made them a sell-out in concert halls around the country.

If you're nostalgic for those days of wine and roses, the 1950's, then clear June 25 on your calendar because the *Rat Pack: Reflections Of Frank, Dean,*



From cool jazz to hot soul. On June 29 Martha Reeves and the Vandellas, one of the 60's greatest Motown soul singers, comes to Patchogue Theatre for one performance only. With the Vandellas she topped the charts with "Jimmy Mack," and "Dancing In The Street." She pours her heart into her soul, and her live performance is not to be missed.

On July 2, Gateway introduces its Sunday Staged Reading Series at Patchogue Theatre with *Shadows In The Sun*, starring Marisa Berenson and Academy Award winner Kim Hunter. The play is set in the Costa

**PAPA NICKS PIZZA**

Gyros, Salads, Heros, Dinners  
Daily Lunch Specials  
286-6400  
117C-South Country Road, Bellport Village, NY

**THE VARIETY MART**

An Old Fashion  
Five & Ten




138 Main Street  
Bellport, New York 11713  
631-286-2210

**THE BANK OF NEW YORK**

24-hour ATM  
BELLPORT BANKING  
OFFICE LOCATED AT:

LONG ISLAND REGION  
32 Station Road  
Bellport, New York 11713

Virginia Asero  
Assistant Vice President  
**(631) 286-4200**  
Member FDIC 1986 The Bank of New York

**BELLPORT PAINT & WALLPAPER**  
COMPLETE PAINT & WALLPAPER SUNDRIES

- PERSONALIZED SERVICE •
- COMPUTER COLOR MATCHING •



631-286-5850  
145 South Country Rd.  
Bellport, NY 11713



COMING SOON TO A PERFORMING ARTS THEATRE NEAR YOU!

Brava during the 1960s as old and new friends are affected by their memories of the Holocaust and World War II. Featuring lights, props, costumes, music, and movement, it is an opportunity to see these two legendary actresses at work. A question and answer session with the cast and Long Island playwright Lee Davis will follow.



Tickets for all Patchogue Theatre shows can be purchased over the phone at 631-654-1133 or 1-888-4TIXNOW, on the web at [www.gateway-playhouse.com](http://www.gateway-playhouse.com), or at any of Gateway's three box offices: Patchogue, Smithaven Mall, or Gateway Playhouse. Pick up yours at intermission!



# CAVANAUGH'S

"Let's Have Fun!"

Est. 1986

◆ New Smoke-Free Dining Room ◆

Serving Lunch Daily Starting at 11:30 • Dinner Served Every Night  
Dining Room Open Sunday - Thursday Till 11 PM  
Friday And Saturday Till 12 Midnight

## DINING SPECIALS

Mondays - 2 For 1 Chicken Wings

Tuesdays - 20 Oz. Porterhouse \$10.99 • Thursdays - Prime Rib \$11.99

Kitchen Open

Sunday - Thursday Till 12 Midnight

Friday and Saturday Till 2 AM

17 TVs - Quick Draw



255 Blue Point Avenue, Blue Point

631-363-2666

[www.eveningout.com/cavspub](http://www.eveningout.com/cavspub) • [www.bluepoint.org](http://www.bluepoint.org)

Our 50th Anniversary Season  
continues with these exciting shows!



**ON SALE NOW!**

BOX OFFICE HOURS - 7 DAYS -  
Monday - Tuesday 10:00 - 5:00 p.m. • Wednesday thru Saturday 11:00 - 9:30 p.m. • Sunday 12:30 - 7:00 p.m.  
PHONE ORDERS 286-1133  
(VISA & MC Only) No checks accepted on day of performance.



114 WEST MAIN STREET

PATCHOGUE, NY 11772

PHONE 475-4774

FAX 207-0267

**TRIO**  
FINE FOOD & DRINK

KEVIN STAHL

CHEF/OWNER

PLEASE CALL FOR RESERVATIONS

**10% OFF DINNER**

WITH PRESENTATION OF A SHOW TICKET FROM  
SUMMER/FALL 2000 SEASON

## WHO'S WHO...

and the Timid Girl from BILLION DOLLAR BABY. She was also in the original Broadway company of RAGGEDY ANN. Other National Tours include JEROME ROBBINS' BROADWAY, DO BLACK PATENT LEATHER SHOES REALLY RELIEVE UP?, and MY ONE AND ONLY. Regional credits include, COMPANY (Susan) DAMN YANKEES, (Gloria Thorpe), WEST SIDE STORY, (Anita), CINDERELLA with Phyllis Diller (Portia) and ANYTHING GOES, (Bonnie). Her workshop credits include THE ROYAL FAMILY OF BROADWAY, STEEL PIER, PAL JOEY and MOTHER'S DAY. Ms. Fletcher was recently featured in "Law and Order" as Doris Cavanaugh. Other television credits include, "One Life to Live" (Judith Cunningham), "Reading Rainbow," (Miss Glug) and "Texas," (Carolann). She starred in the independent film "Blood Sucking Pharaohs in Pittsburgh" as Dee Dee Taylor. Susann is proud to be revisiting the Whorehouse as Mona.

**DON GARVERICK** (Ensemble, Melvin P. Thorpe understudy) is thrilled to be a part of the summer season at Gateway. He comes to Gateway after a stint as Assistant Director & Choreographer of AREA 51-THE MUSICAL at the Sanford Meisner in NYC. Recent performing credits include Snoopy in SNOOPY!!! (Penguin Rep), Will Parker in OKLAHOMA!, Roger in GREASE!, The Bellhop in LEND ME A TENOR (Millbrook Playhouse), Andy Lee understudy in 42<sup>ND</sup> STREET (Rockwell), King Simon of Legree in THE KING & I, and Carnival Boy in CAROUSEL; (Struthers Library). Thanks again and again and again to Mom, Dad and Danielle. Geranimo Scott!

**WANDA L. HOUSTON** (Jewel) is from Chicago via Los Angeles. Wanda has toured the U.S., Europe, the Baltic and Australia but is most thrilled to finally work in New York. Her favorite roles include: A GOOD SWIFT KICK (Off-Broadway, a.k.a. BOTH BARRELS), The Michael Jackson/Larry Hart production of SISTERELLA as the wicked step-sister, Magnolia (Nominated Best Supporting Actress - NAACP Awards, LA), BACK TO BACHARACH AND DAVID, directed by Kathy Najimy, A...MY NAME IS ALICE, Sister Hubert in NUNSENSE, HAIR (LA), Nettie in CAROUSEL, Mother in AMAHL AND THE NIGHT VISITORS (Chicago) and BEACH BLANKET BABYLON (Las Vegas). She's performed with such notables as Joe Cocker, Celine Dion, Patti Austin, Rick Astly and with Debbie Allen in the 67th Academy Awards. Look for

LongIslandArt.Net

Because we are proud of where we live...

## WHO'S WHO...

Wanda this Christmas in Dreamvision's feature film, "The Path" on Fox Family Television.

**BRIAN JOSEPH LAUGHLIN** (Ensemble), Originally from Nebraska, Brian moved to NYC to, as his parents put it, "waste his life away and end up dead in an alley." Fortunately, he is still alive and wasting his time most recently in WEST SIDE STORY (Riff), DAMN YANKEES (Bomber), MUSIC MAN, OUR TOWN (George), GLASS MENAGERIE (Tom) and a bunch of TV and Films that you've probably never heard of. Thanks to my family for all their love, support and most importantly their cash.

**ROBIN LEVINE** (Dawn, Ginger understudy) is very happy to be spending her summer at Gateway Playhouse. She is a recent graduate of the University of Illinois at Urbana-Champaign, where she received a BFA in Dance. She has spent this past year dancing in YULETIDE CELEBRATION with the Indianapolis Symphony Orchestra and as a Gemini Twin in A FUNNY THING HAPPENED ON THE WAY TO THE FORUM. Thank you to my family for their constant support and love.

**GREG LOBUONO** (Ensemble) from Cincy Ohio, Greg's happy to be back here at Gateway! Broadway tours: GREASE with Sally Struthers and Adrian Zemed, STARLIGHT EXPRESS, Dustin; GREASE (Brazil) Danny Zuko! Greg has also toured with Ben Vereen in his self-titled show and also with Louise Mandrell! I thank my family and friends for dealing with me!

**STEVE LUKER** (Sheriff Ed Earl Dodd) has appeared in over 50 stage productions from the recent National Tour of FOOTLOOSE (Uncle Wes) to European Tours of 42<sup>ND</sup> STREET (Played or covered all male principals but one) to Regional Theatre (Juan Peron in EVITA) to Cruise Ships (George in GEORGE M) to Dinner Theatre, Las Vegas, State Fairs, Summer Stock, Business Theatre and more. He comes directly from playing the Judge and the Warden in Crossroads Theatre's concert reading of the new musical, MANDELA. TV viewers may have seen him in commercials or on "Cosby." He is the proud author of Fire Safety Magic which has been performed in over a thousand schools. Steve wishes to thank the Luker and Noona families, especially wife, Susie "This performance dedicated in loving memory to Great Uncle Harold Pfeifer."



211 Mastic Beach Rd.  
Mastic Beach,  
New York 11951

(631) 281-8744  
Fax (631) 281-4651

Irish Coffee



Pub

at

**Bellport  
Country Club**

always open to  
the public.

The favorite for  
pre- and post-show  
dining.

Conveniently located between  
Gateway Playhouse and  
Patchogue Theater on  
SOUTH COUNTRY ROAD, in  
BELLPORT VILLAGE

Available for groups and  
small parties.

FOR RESERVATIONS

CALL

**286-4227**

Also visit

Irish Coffee



Pub

on CARLETON AVENUE  
in EAST ISLIP

277-0007



# Cilantro's

*Eclectic New American Cuisine  
Fine Dining and Cocktails*

- Pre Theater Dinner Specials -
- Live Jazz on Friday Nights -
- Prix Fixe Menu Always Available -

*Join Us Before or After  
The Theater For A*

*Cocktail, Cappuccino or Dessert*

*154 Montauk Highway,*

*Blue Point, New York 11715*

*Tel. 631-363-0500*

*Fax. 631-363-0506*

*www.menusonline.com*

## WHO'S WHO...

**CRAIG MASON** (*Melvin P. Thorpe*) is pleased as punch to be back at Gateway after surviving last season's TITANIC as first class steward Henry Etches. He understudied and performed the role of Uncle Max in the recent Broadway revival of THE SOUND OF MUSIC (a part he first did in high school) and was previously on Broadway in CAMELOT with Richard Burton, and in the National Tour with Richard Harris. A former lawyer and minister, Craig has toured the country in a one man show titled DANGEROUS PREACHING, based on the life of Harry Emerson Fosdick, and most recently, he was a rapping Dracula Off-Broadway in MIAMI BEACH MONSTERS.

**JENNIFER McCAMISH** (*Linda Lou, Imogene Charlene, Angel understudy*) is a graduate of the University of Texas in Austin with a Bachelor of Arts in dance. Her educational and professional career has stretched worldwide with scholarships and training in London, L.A., New Orleans, and New York. Jennifer has a diverse repertoire which includes professional performances of THE NUT-CRACKER with the Delta Festival Ballet to soloist with the Delia Stewart Jazz company and Dance Repertory Theater. Other performances include OKLAHOMA, TAP GIRLS, LEGENDS IN CONCERT, and Gateway's most recent performance of HERE'S LOVE (Dance Captain). She also

## WHO'S WHO...

starred as Barbie for Mattel toys. Lots of love and thanks to my family.

**HEATHER OLT** (*Angel, Jewel understudy*) is thrilled to be spending her summer at Gateway. Most recently, she portrayed Queen Vashti in the new musical QUEEN ESTHER. Prior to that, she galvanized around the country as Meg in BRIGADOON. Other favorites include: INTO THE WOODS (Cinderella), GODSPELL (Sonia), BIG RIVER, THE MOST HAPPY FELLA and THE MIKADO. She received a BFA in Music Theatre from Illinois Wesleyan University. She would like to thank God for her blessings and family and friends for their endless love and support. Momma Jo, this one's for you!

**THOMAS PACIO** (*Ensemble, Band Leader understudy*) is happy to be making his Gateway debut this season. A graduate of The Tisch School of the Arts at NYU, Tom holds a BFA in drama. Some past credits include A CHORUS LINE (Paul), GYPSY (Tulsa), WEST SIDE STORY (Pepe) and various new musical workshops. Special thanks to all friends, the gang at CRC, and especially to his family without whom he would be nothing.

**BRITTANY PIXTON** (*Dontsey Mae*) is ever so gleeful to return to the Gateway Playhouse after performing in SHOWBOAT last summer. She studied at AMDA in NYC and has been frolicking on stages and singing in studios since then. Recent NY credits include A GRAND NIGHT FOR SINGING (Vickie), HENRY V (Katherine) and INTO THE WOODS (Witch). Britt will spend the rest of her summer at the Shawnee Playhouse tackling the role of Anna in THE KING AND I.

**MICHELLE PRUIETT** (*Shy*) is very glad to be here for her first season at Gateway. Recently her credits include: A CHRISTMAS CAROL (Shawnee Playhouse), featured soloist in "PATTERNS: A MALTBY AND SHIRE REVUE," and a season at New London Barn. "I'd like to thank all my loved one's for their support. Thank you!"

**ALEX WIPF** (*C.J. Scruggs/Governor*) Broadway: VICTOR/VICTORIA Toddy Stand-by, DA Charlie-Now, TO GRANDMOTHER'S HOUSE WE GO, FEARLESS FRANK, 6 RMS RIV VU and AN EVENING WITH RICHARD NIXON. Off-Broadway: Produced and played in Mark Medoff's THE MAJESTIC KID. Won an Obie for singing in Zulu in "POPPIE NONGENA" which also played the 1983 Edinburgh Festival and was in the last Julius Monk Review at Plaza Nine. TV: He has had several appearances on "Law and Order" and various soaps, not to mention hundreds of commercials. Film: His film credits include two unreleased independents; "Game Day" and "Puppet" as well as the 'mystery man' trying to kill Jane Fonda in Alan Pakula's "Rollover." In his civilian life he is most proud to be working with "Save Open Space

# ACTING AND MUSICAL THEATRE TRAINING

*Classes now  
enrolling!*

all levels of acting for all ages thru adult

# GATEWAY ACTING SCHOOL

LEARN FROM THE PROFESSIONALS!

**286-9014**



# BRICK HOUSE BREWERY & RESTAURANT



## PLAYHOUSE DINNER SPECIALS

(Available Sunday-Thursday 4pm-10pm)

### Opening Act:

*Tossed Salad, Caesar Salad  
or Soup*

### Main Stage:

#### Choice of:

*Sesame Crusted Tuna Steak*

*Rigatoni ala Vodka*

*Sliced Marinated Steak*

*Apple Glazed Roast Loin of Pork*

*Homemade Meatloaf*

*Chicken Marsala*

*- with potatoes & vegetable -*

### Final Act:

*Coffee or Tea Plus*

*Choice of: Chocolate Stout Cake,*

*Cheesecake or Carrot Cake*

*(All soups and desserts made here  
on the premises)*

### Complete Dinner Price...

**\$12.95**

**67 W. Main St., Patchogue  
447-BEER**

ALL MAJOR CREDIT CARDS

Visit us on the web at

[www.brickhousebrewery.com](http://www.brickhousebrewery.com)



Coming soon  
to our  
sister theatre!

# PATCHOGUE THEATRE

FOR THE PERFORMING ARTS

71 E. Main St., Patchogue



**DON McLEAN**  
JUNE 8, 8:00



**10,000  
MANIACS**  
JUNE 9, 8:00



**SANDRA  
BERNHARDT**  
JUNE 17, 8:00



**GROWING UP  
BRADY**  
Live with **BARRY  
Williams**  
JUNE 22, 8:00

**JOHNNY  
MAESTRO  
AND THE  
BROOKLYN  
BRIDGE**



**SPECIAL GUESTS**  
**Time and Time Again**  
JUNE 23, 8:00

All shows subject to availability and date and/or time change.  
All tickets subject to handling and facilities charges.  
Multi-artist acts subject to lineup changes.

Presented By **GATEWAY** PERFORMING ARTS  
TICKETS ON SALE IN THE LOBBY  
OR PURCHASE ONLINE AT  
[www.dixnow.com](http://www.dixnow.com)

CALL 286-1133 or 1-888-4TIXNOW

## WHO'S WHO...

Now" an organization dedicated to preserving open space and farmland on the North Fork of Long Island. Mr. Wipf is a resident of Cutchogue.

**CRAIG YOCHEM** (*Ensemble*) hails all the way from the great state of Colorado. Craig is thrilled to be a part of the multi-talented cast at Gateway Playhouse. Even before graduation from Towson State University with a BFA in Dance Performance/Choreography Craig could be seen on the stages of King's Dominion, Opryland U.S.A. and Tokyo Disneyland. He has also toured extensively throughout Europe in musical reviews until finally landing in Paris at the world famous Lido de Paris. Craig's love of seeing the world has also led him to Seoul, South Korea dancing the lead in BRAVO and on a tour of Australia in an Irish Step Dancing Show. Musical theatre shows include: A CHORUS LINE, WEST SIDE STORY and CRAZY FOR YOU. Television credits include: the "MTV Video Music Awards," "Latin Legends Award Show" and an upcoming HBO Dance Documentary. Craig would like to send a special thanks to Todd for his continued support.

**PAUL ALLAN** (*Producer*) is proud to be presenting the 50th season of live theatre here at the Gateway Playhouse. Having grown up in and around the theatre, Paul has been able to watch Gateway "grow up" over the years and expand into many different areas - including Touring productions produced Nationally and Internationally, and a successful set rental company. Paul currently splits his time between the season here at Gateway Playhouse, and the summer concert series at the Patchogue Theatre For The Performing Arts. Some of Paul's favorite projects to date include TOMMY, PHANTOM, and ONCE ON THIS ISLAND on this stage - and TITANIC at the Patchogue Theatre, which was the first live musical presentation on that stage since 1934. Paul is grateful for the support of his family and staff who are a continuing means of encouragement during challenging times.

**PHILLIP GEORGE** (*Director*) is a Texan first and foremost. As a director, his credits include 12 editions of the infamous FORBIDDEN BROADWAY revue in New York, as well as Chicago, London, Los Angeles and the National Tour. The most recent edition, FORBIDDEN BROADWAY CLEANS UP ITS ACT! was nominated for four Drama Desk Awards and was recorded by DRG records. The London edition of FORBIDDEN BROADWAY recently transferred from the Jermyn Street Theatre to the Albery Theatre in the West End. He directed FORBIDDEN HOLLYWOOD both in New York and Los Angeles and continues to work on its various incarnations. In 1993 he collaborated with Howard Crabtree and others on WHOOP-DEE-DOO, directing both the acclaimed New York and London productions. He also was the Associate Director to Mark Waldrop on

## WHO'S WHO...

**WHEN PIGS FLY** at the Douglas Fairbanks. With **David Lowenstein** he created and directed **SHOUT** which had its premier in February at the Duplex. He has directed performers at La Mama, PS 122, HERE & NADA. Other U.S. directing credits include RETURN TO THE FORBIDDEN PLANET, PHILEMON, THE ROAR OF THE GREASEPAINT and A DOCTOR IN SPIE OF HIMSELF. A resident director at the King's Head Theatre in London, his work includes KEAN, MUCH REVUE ABOUT NOTHING, THE FAMOUS FIVE, THE ARCADIAN and FRANKLY, SCARLETT which he also co-authored with his long-time collaborator and best buddy Peter Morris. He is an actor and has appeared in many editions of FORBIDDEN BROADWAY, THE REMARKABLE RUTH FIELDS and regionally in THE IMPORTANCE OF BEING EARNEST, AS YOU LIKE IT, SIDE BY SIDE BY SONDHEIM, FORUM and 1776 to name a few. He teaches at AMDA, directs the occasional club act and is the Artistic Director of The Musical Comedy Company which produces new shows on a small scale. He recently directed Peter Morris's new musical ESCAPE FROM PTERODACTYL ISLAND at the Pleasance Theatre in London and will be directing the first production of Peter's new show THE ROSE AND THE RING at the Kings Head this

Christmas. He is currently working on a new revue about technology — CYBERLESQUE! — and a musical adaptation of THE RED BADGE OF COURAGE.

**ROBIN JOY ALLAN** (*Casting Director*) has been immersed in theater her whole life, performing, musical directing, teaching, directing, producing and most enjoyably, observing many, many great actors and directors work. In 1985 she began her casting career in New York and then Los Angeles, where she had the pleasure of working with Ron Howard, Rob Reiner, Jerry Zucker and Chris Carter (pre-X-Files!) on several projects as Associate and Casting Director, including: PARENTHOOD, WHEN HARRY MET SALLY and GHOST. She led the search for unknowns, discovering Balthazar Getty for the remake of LORD OF THE FLIES, and cast Leonardo DiCaprio in his first TV series-regular role in 1989's PARENTHOOD. She is dedicated to the educational development of young actors and, along with her husband Lorrin, has founded Gateway Acting School for that purpose. Her greatest accomplishment to date is her beautiful daughter, Hayley Lynn.

**JEFFREY BUCHSBAUM** (*Musical Director*) is very pleased to be back at Gateway Playhouse

# Pine Grove Inn

On The Swan River



est. 1910

Open Weekdays

11:30 A.M.

Saturday

11:30 A.M.

Sunday

12:00 P.M.

## EARLY BIRD SPECIALS

Monday thru Saturday, 3 p.m. to 6 p.m.,  
Sunday 12 p.m. to 5 p.m.

## DINNER

served 3 p.m. to 10 p.m.  
Weekdays & Saturdays  
Sundays 12 p.m. to 9 p.m.

## LUNCH

Monday thru Saturday,  
11:30 a.m. to 3 p.m.

Waterside Patio  
Dining on the  
Swan River

Chapel Ave. & First Street • East Patchogue, NY  
**475-9843**

OPEN WEEKDAYS 11:30 AM • CLOSED TUES. • SAT. 11:30 AM • SUNDAY 12 PM  
Directions: LIE to Exit 64, Route 112 South to Montauk Hwy. (27A). Make a left (East) on Montauk Highway to fork in road. Take right side of fork then immediate right onto Chapel Ave.

OPEN 6 DAYS A WEEK

CLOSED TUESDAY



(631) 475-1790 - 1791 Emergency Boarding  
Service  
Fax (631) 475-1807 Call 289-1524

**PATCHOGUE  
PLATE GLASS CO. INC.**

GLASS-MIRRORS-PLEXIGLASS-STORE FRONTS  
AUTO GLASS-INSURANCE CLAIMS

**RON HENTHORNE** 7 Railroad Ave.  
Manager Patchogue, NY 11772



*Pub Fare That Will  
Make Your  
Tongue Smile*

Relax After The Show  
Kitchen Open 11AM to  
11PM, Bar 'til 1AM  
Closed Sun.

Just steps from Theater parking  
70 North Ocean Avenue  
Patchogue  
(631) 289-1900

## THE NUTCRACKER

presented by

**OVATIONS  
DANCE ACADEMY**

in conjunction with

**The Brookhaven  
Youth Orchestra**

**Dec. 2 and 3,  
1:00 p.m. and 7:30 p.m.**  
at The Patchogue Theatre for the  
Performing Arts

For Ticket Info Call  
Ovations Dance Academy

**Director: Orlando Peña**  
631-218-0315

## WHO'S WHO...

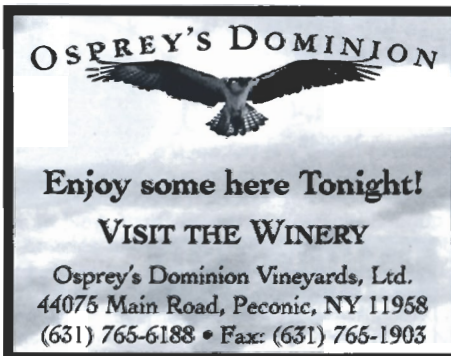
after musical directing such shows here as SONG & DANCE, THE SECRET GARDEN, BEEHIVE and the award-winning production of PHANTOM. He has musical directed and conducted National and European tours of A CHORUS LINE, European and South American tours of PHANTOM OF THE OPERA and played in the pit of the National tour of DAMN YANKEES, starring Jerry Lewis. Last fall Jeffrey musical directed the new musical O. HENRY'S LOVERS by Joe DiPietro and Michael Valenti, then spent the winter in Greece, where he musical directed his own musical review, THE MAGIC OF MUSICALS in Athens. Jeffrey is also a voice teacher and vocal coach in Manhattan.

**DAVID LOWENSTEIN (Choreographer)** David's choreography was featured in the Drama Desk Award winning Howard Crabtree's WHOOP-DEE-DOO!, the off-Broadway revival of ON A CLEAR DAY YOU CAN SEE FOREVER and the original musical SING FOR YOUR SUPPER at the DiCapo Arts Theater. Regionally, as a Director/Choreographer, he has mounted productions of DAMES AT SEA, GREASE, I LOVE MY WIFE, ANYTHING GOES, to name a few. His television and film credits include: "The Vanessa Williams Christmas Special" and "Dragtime" for HBO.



**THE SAYVILLE INN**  
EST. 1888

Dinner Nightly 5 P.M.  
(631) 567-0033  
Pamela Raymond  
Richard Stafford  
199 Middle Road  
Sayville, NY 11782



**OSPREY'S DOMINION**

Enjoy some here Tonight!  
**VISIT THE WINERY**  
Osprey's Dominion Vineyards, Ltd.  
44075 Main Road, Peconic, NY 11958  
(631) 765-6188 • Fax: (631) 765-1903

**VOLUNTEERS NEEDED**

Interested in being an usher or volunteer technician?  
Call **286-0555**

## WHO'S WHO...

**KIM HANSON (Lighting Designer)** is a veteran of many Gateway productions: ANYTHING GOES, SINGING IN THE RAIN, CAMELOT, GYPSY, GROUCHO, PETER PAN and his first show at Gateway, the Unforgettable BABY. Kim is glad to be back for this production of 1776. Some National and International Tours he has designed include AINT MISBEHAVIN', A CHORUS LINE, 42<sup>ND</sup> STREET, SOPHISTICATED LADIES, SONG AND DANCE and EVITA. Kim has been resident designer for Chen and Dancers, and the New American Ballet Ensemble and has provided lighting and production management for various artists such as Ray Charles, Barbara Cook, Gregory Hines, Bobby Short, Chita Rivera, Tommy Tune, Robert LaFosse, and Darci Kistler.

If you would like to advertise in this  
Playbill, please contact Pam Young at

**SEARLES  
GRAPHICS**  
INC.

631-345-2202 or 516-459-1893

## Morgan's Beach House Restaurant



Lunch & Dinner - Indoor/Outdoor  
363 Grove Ave. Patchogue 631-758-3524  
(closed Mondays)

## Swan Bakery

"Serving the Community Since 1946"

Official Baker to the Gateway Playhouse

Guy J. Gagliano • Robert E. Roode

15 South Country Road  
East Patchogue, NY 11772  
Tel. (631) 475-9626

## Before or After The Show Late Night Dinner • Dessert and Coffee

All Baking  
Done On  
Premises

Open 7 Days  
6:00 AM - 2:00 AM

Breakfast,  
Lunch and  
Dinner

Daily Specials



## ROYAL OAK

**Diner - Restaurant**

Station Road and Sunrise Highway - Bellport, New York 11713

TEL. (631) 286-5757



# Bay Street Theatre

"one of the country's pre-eminent regional theatres"  
- CBS News Sunday Morning



New and Classic Plays & Musicals,  
Cabaret, Chamber Music, Concerts,  
Play Readings, Special Events,  
and Theatre in the Schools.



For 2000 Season Brochure or Ticket Information,  
Please Call: 725-9500

**Save the date! Summer Gala Benefit Bash**

With guest auctioneers **Julie Andrews, Alex Baldwin, and Chevy Chase**  
**Saturday, July 8 Call 725-0818**

ORDER BY PHONE **(631)725-9500** ON THE LONG WHARF, SAG HARBOR

**COLDWELL BANKER**

**JOHN ASHLINE**

Licensed Associate Real Estate Broker

(631) 299-1400 BUS., (631) 654-5001 FAX  
ashline@coldwellbanker.com E-MAIL

BELLBROOK REALTY, INC.  
66 MEDFORD AVENUE  
PATCHOGUE, NY 11772

Each Office is Independently Owned and Operated

**STAGE DOOR Dance** SCHOOL OF

CALL FOR SUMMER/FALL  
REGISTRATION

PRE-SCHOOL THRU ADULTS • FAMILY DISCOUNTS

**654-8858**

25 PATCHOGUE-YAPHANK ROAD • EAST PATCHOGUE

Our students have performed at the  
Gateway Playhouse Mainstage and Children's Theatre

# JIM'S DELICATESSEN

2478 Montauk Highway  
Brookhaven, New York  
(Located next to the firehouse)

**286-2333**

Original Home of  
the Buy a Pound,  
Get a Pound Free Salad

Hot and Cold Catering,  
Breakfast and Hot Lunch,  
Specialty Sandwiches,  
Homemade Soups and  
Salads, Wraps

**OPEN DAILY 5AM - 10PM**

# Swezey

FUEL CO., INC. - EST. 1919

Suffolk's Largest Family  
Owned Oil Company

- Automatic Oil Delivery Service
- 24-Hour Emergency Service
- Budget Plans That Pay You Interest
- Expert Installation Of Boilers,  
Burners, Hot Water Heaters &  
Pool Heaters



**475-0270**

51 RIDER AVE., PATCHOGUE

# Rutland

Funeral Home, Inc.

OUR REPUTATION FOR 'EXCELLENCE' HAS ENDURED SINCE 1856

**475-0098**

500 North Ocean Avenue, Patchogue, New York 11772

Proudly Supporting the Arts  
that Enrich Our Lives

A FAMILY-OWNED Funeral Home - The Romeo Family of Patchogue  
Discover how affordable 'Excellence' can be!

# Mayer's

FLOWER COTTAGE

Family Owned Since 1929

"We Express Your Feelings -  
Beautifully"

400 Medford Ave., Patchogue  
(One Block North of Sunrise Highway)

(631) 475-1779



# COLEMAN

CESSPOOL SERVICE, INC.

ART COLEMAN

**475-1733 • 878-2010**

Family Owned and Operated  
For Over 50 Years

1 Chapel Avenue, East Patchogue, New York 11772

- Dedicated to Honest & Reliable Service •
- Precast Cesspools Installed •
- Portable Toilet Rentals •

# ROE AGENCY INC.

OVER A CENTURY OF COMMITMENT  
Since 1898

**PERSONAL AND  
COMMERCIAL INSURANCE  
PROPERTY  
CASUALTY  
LIFE  
HEALTH  
FINANCIAL SERVICES**

Walter A. Roe, President  
Patricia A. Mankowski, VP and Secretary  
Virginia Flynn, VP and Treasurer

125 EAST MAIN STREET  
PATCHOGUE, NY 11772-0970  
475-4000  
FAX 475-7648  
E-MAIL: roe@nais.com



## Old Inlet Inn



### Fine Dining

Dinners from 5:00 p.m.  
Sunday Brunch 12 - 3:00 p.m.  
Sunday Dinner 3 - 9:00 p.m.  
Closed Mondays

### Ten Minutes From The Beautifully Renovated Patchogue Theater

Show Tune Sing-A-Longs on  
Fri. with Jim Ahrend and others  
at the Piano 8:30 p.m. - 12:30 a.m.

Walter A. Roe, Prop. Erik C.W. Brown, Chef

108 So. Country Road, Bellport  
286-2650

10% Entree Discount  
with Theatre Tickets



## Casual Family Dining

**Come Join us Before  
or After the Show**

Senior Menu Always Available  
Children's Menu Only \$2.99

7 a.m. - 10 p.m. 7 day/week  
240 East Main Street,  
Patchogue

**654-3641**



## Richard York OF PATCHOGUE



631-475-1047  
14 South Ocean Ave.  
Patchogue  
Four Stores  
South of Main St.

### Quality Footwear for the Entire Family Since 1927

- Helpful, Friendly Service
- Areas Largest Selection  
of Sizes & Widths AA-EEEE

Rockport, Easy Spirit, Florsheim, New Balance,  
Stride Rite, Selby, Teva, Timberland, Skechers,  
Munro, Dexter, Keds, Reebok, Dyeables, Topsider,  
Soft Spots, Clarks, etc.

**10% OFF** any purchase  
with ad only

Excludes Easy Spirit, Dr. Martens & other offers. Expires 12/31/00

## GATEWAY PLAYHOUSE STAFF

Executive Producers .....	Ruth and Stan Allan
Producer .....	Paul Allan
Associate Producer .....	Jeff Bellante
General Manager .....	Gale Edwards
Casting Director .....	Robin Joy Allan
Company Manager .....	Stanley Schorr
Director .....	Phillip George
Choreographer .....	David Lowenstein
Musical Director .....	Jeffrey Buchsbaum
Dance Captain .....	Susan Fletcher
Production Manager .....	Kristin Hassett
Production Stage Manager .....	David Taylor London
Assistant Stage Manager .....	Erin Kraus
Lighting Designer .....	Kim Hanson
Sound Designer .....	Greg Reif
Costume Designer .....	Charles Batchelor
Technical Director .....	Justin Testo
Assistant Technical Director .....	Russ Dobson
Master Electrician .....	Brian Loesch
Assistant Master Electrician .....	Craig Tichy
Costume Coordinator .....	Cheryl Randal
Wardrobe Assistant .....	Clarissa Smith
Master Carpenter .....	Mark Frederick
Master Rigger .....	A.D. Garrett
Scenic Painter/Properties Mistress .....	Deb Gauvette
Music Contractor .....	Dan Yeager
Technicians .....	Chris Creevy, Mike Gugliotti, Nate Hillard
Interns .....	Courtney Alphin, Sacha Ferguson
Box Office Manager .....	Nancy Kana
House Manager .....	Kelly Adee, Laurie Parr, Elizabeth Bender
Group Sales .....	Nadine Hazard
Box Office Staff .....	Emily Ehrend, Jeff Flam, Danielle Frasca, Jodi Grega, Gladys Hawkins, Brian Lewis, Scott Maguill, Sarah Jean Miller, Greg Monteith, Pam Stewart
Administrative Assistant .....	Janet Trahan
House Staff .....	Gayle Allan, Doug Bernhard, Bob Coupe, Cathy Esposito, Don Harrison, Earlene Johnson, Joe Kelly, Matt Mordente, Robert Nofi, Theresa Pavanello
Maintenance/Landscaping Supervisor .....	Bob Nofi
Concession Manager/Production Photographer .....	Mil Kana
Sound Consultant .....	Dominic Sack
Publicist .....	Linda Unger
General Counsel .....	Ann L. Nowak & Associates

## PATCHOGUE THEATRE for the PERFORMING ARTS STAFF

Managing Director .....	Tim Wilkins
Technical Director .....	Brodie Steele
Master Electrician .....	Chris White
Sound Engineer .....	Mark Clark
House Manager .....	Brian Lewis

Gateway Playhouse would like to thank our volunteer staff for their  
dedication and support. It is much appreciated.

Al Pollog - Head Usher

Ushers - Olga Belz, June Budd, Martha DeRuiter, Mary Fox, Irene Fritz, Becky Gillen, Marian  
Harrison, Howard Lehman, Louise Manette, Marie Rachek, Rita Wehner, Patricia Yurdiga

**IF YOU WOULD LIKE TO JOIN OUR VOLUNTEER STAFF CALL 286-0555**

**WARNING** - The photographing or sound recording of any performance is strictly prohibited.

Gateway Playhouse offers a wireless sound enhancement system  
for the hearing impaired. Inquire at the box office for more information.

**FIRE NOTICE** The exit indicated by a red light and sign nearest to the seat you occupy, is the shortest  
route to the outside. In the event of fire or other emergency, please do NOT run. WALK to that Exit.  
However, under normal circumstances, when leaving the Theatre, use the center rear exits. SMOKING  
is prohibited in the BUILDING, as required by the Suffolk County NO SMOKING Ordinance. Smoking in  
any area designated "No Smoking" renders the offenders subject to a fine, or imprisonment, or both.

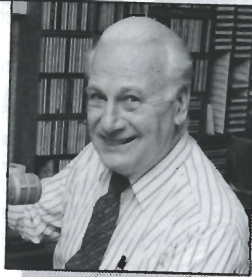




Bryan McGowan, 5:30 - 10:00 a.m.

# Join Your **wlim** STEREO Family

## Monday - Friday



Jack Ellsworth,  
"Memories in Melody"  
10:00 a.m. - Noon



Bob Stern, Noon - 3:00 p.m.  
1-2 BDWY. Hollywood Show

- Big Bands
- Popular Standards
- Local & Community News
- Daily Prizes

**GLENN MILLER**

**FRANK SINATRA**

**ROSEMARY CLOONEY**

**BARBRA STREISAND**

**NAT KING COLE**

**DORIS DAY**

**BENNY GOODMAN**

**TONY BENNETT**

**BING CROSBY**

**wlim** STEREO

**1580 AM**

**Long Island  
Music**

# Children's Theatre

Live Musical shows! Friday and Saturday mornings at 10:30 a.m.

All Seats \$7.50

## Snow White and the Seven Dwarfs



JULY 7,8,14,15,21,22

## FAIRYTALE TRIO



Three Classic Fairytales –  
Little Red Riding Hood,  
The Three Little Pigs,  
Hansel and Gretel  
JULY 28, 29, AUGUST 4,5,11,12

# TOY FACTORY

AUGUST 18, 19, 25, 26,  
SEPTEMBER 1, 2

Advance sale general admission tickets for all shows go on sale beginning May 18th. Phone orders are accepted. Remaining tickets will be sold at the door, the morning of the show. Sorry, Children ages 2 and older only - No Infants Please. Shows subject to change without notice.



DO YOU RECEIVE OUR FREE BROCHURE EACH YEAR?

If not, fill out this form and leave it in the box office.

(Please Print)

Name \_\_\_\_\_

Address \_\_\_\_\_

\_\_\_\_\_