



Bringing New York Closer To The World.

American loves New York. And we show it every day with over 200 flights from six tri-state area airports to nearly 260 cities in 40 countries worldwide. For more information call your Travel Agent or American at 1-800-433-7300, or visit us on the web at www.americanair.com

American Airlines
American Eagle

LA GUARDIA • JFK • NEWARK • LONG ISLAND MACARTHUR • WHITE PLAINS • NEWBURGH STEWART
American Airlines and American Eagle are registered trademarks of American Airlines Inc. American Eagle is American's regional airline associate.

Gateway

PLAYHOUSE



50th Anniversary Season

Pippin

The Best Little Whorehouse In Texas

Big

Yankee Doodle Dandy

South Pacific

The Will Rogers Follies

GATEWAY
PERFORMING ARTS

summer
2000 playbill

*For peace of mind...
Take the time*



MAMMOGRAPHY SAVES LIVES

Mammography facility with full ACR accreditation & FDA certification

Brookhaven
Women's Health Services

285 Sills Road • Building 5-6 • Suite E • Patchogue, New York 11772

For more information or to schedule an appointment for
Mammography, Ultrasound or Bone Density Testing
Call (631) 654-7700 or 654-7114

Marlyn Lerner, M.D., D.A.B.R. ~ Ronald S. Hames, M.D., D.A.B.R.
Ira J. Langer, M.D., D.A.B.R. ~ Daniel F. Settle, M.D., D.A.B.R.



TREASURES OF YEARS GONE BY

The warmth of gold and the artistry of radiant platinum... We invite you to come in and select from our collection of new and period treasures. Specializing in design and remounts.

Turn your unwanted jewelry into cash.

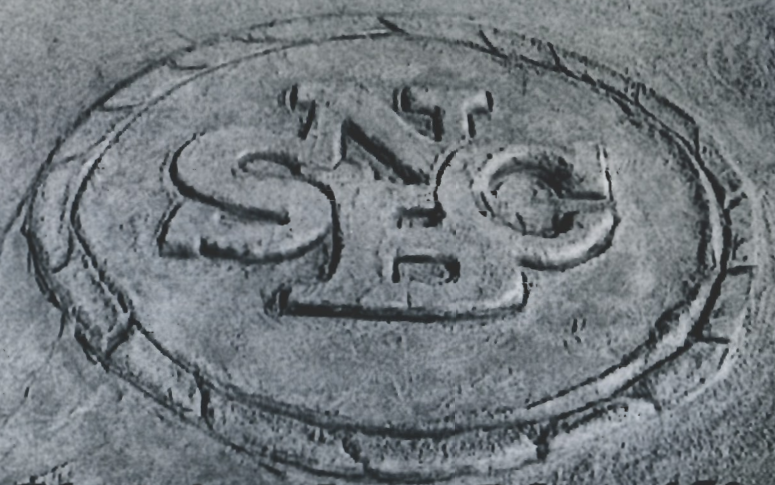
W^{m.} J. O'Neill

Sales Exchange Co., Inc.
Jewelers and Collateral Loanbrokers
One East Main Street • Patchogue
631.289.9899

Mention this ad for 10% discount on purchase

From the Sound to the Sea...

We've been helping
choreograph the financial futures
of neighbors like you.



The Suffolk County National Bank

Equal Opportunity Lender

www.scnb.com

Member FDIC

A Note From the Producer

Dear Patrons,

I wanted to take this opportunity to thank you for your patronage over the years. We at Gateway Playhouse have been growing for 50 years now and are making constant changes to improve the quality of our productions. One of those changes has been utilizing this wonderful space, the Patchogue Theatre for the Performing Arts. This has allowed us to put larger sets and casts on stage.

In today's playbill you will have the option to help inform us of what type of show you would like to see next year. I hope you will take a few moments to fill out this form so that we can learn what you, our valued patrons, enjoy.

Thank you again for your continued support of the Arts. Now please enjoy *BIG - the musical*.

Paul Allan
Producer

THE
Will Rogers
FOLLIES



Now THIS is an OLDIES station!

The Beatles

The Supremes

Elvis Presley

Creedence Clearwater Revival

Beach Boys

The Doors

Elton John

The Rascals

The Rolling Stones

Aretha Franklin

103.1 FM

B103 IS PROUD TO "BEE" PART OF ANOTHER GREAT GATEWAY SEASON

B-103
Long Island's Oldies

For the best
& most oldies!
103.1 FM

Open for Lunch & Dinner
Tuesday through Sunday

LOUIS XVI

Reservations
Recommended



Voted the No. 1 restaurant overall on LI, as well as No. 1 for Decor – devotees swear it could rival “the Palace of Versailles” – this “extravagant,” “elegant” and “exquisite” “crown jewel” boasts “gorgeous views” of Great South Bay from its “beautiful setting on the water” in Patchogue; indulge in “extraordinary,” “imaginative” New French cuisine “magnificently presented” by an “impeccable” staff; dip into the “kids’ college fund” or “mortgage the house” if you must, but it’s “worth every franc” for such an “incredible dining experience.”

– Zagat Survey 2000 26 28 25 \$57

600 South Ocean Avenue • Patchogue, 654-8970

THE HARBOR SIDE

“Incomparable Seafood Restaurant”

Open 7 Days a Week
at 11:30 a.m.

All Major Credit
Cards Accepted.

Complete Dinners
Everyday.



Highly Recommended:

Newsday

Daily News

NY Post

The Practical Gourmet

Complete Lunches*

Served Mon. - Sat.
11:30 a.m. - 3:30 p.m.
Starting at \$8.50

Complete Early Bird Specials*

Served Mon. - Fri. 3:30 p.m. - 5:45 p.m.
Sat. 3:30 p.m. - 6:30 p.m.
Sun. 11:30 a.m. - 4:00 p.m.
Starting at \$12.95

Sunday Specials

Includes: Soup or Salad,
Potato, Vegetable, Dessert & Coffee
11:30 a.m. - 4:00 p.m.
Starting at \$9.95

*Above specials not available for groups of 15 or more or holidays. Prices subject to change.

Special Rates for Theatre Groups from 20 to 125. Call for more information.

503 E. Main Street, Patchogue, New York • Located on the corner of E. Main St. (27A) and Phyllis Dr.

(631) 654-9290

*If you're not completely
satisfied with the performance
of your bank,*

come into any North Fork Bank branch today and find out about the best-performing bank in America. The women and men in our branches are what really makes North Fork Bank number one... the most efficient, hardest working bankers in the industry.

NFB

NORTH FORK BANK™

Norma Marx, VP/Branch Manager • Patchogue Branch
Corrinne Newman, VP/Branch Manager • Shirley Branch
Teri George, AVP/Branch Manager • Blue Point Branch
Marion Reinhardt, AVP/Branch Manager • Sayville Branch
Member FDIC

Fantastic Gardens

"Turn one fantastic quality into your fantastic garden"



*Holiday plants,
House plants, Annual,
Perennials and more*

67 Avery Avenue
Patchogue, NY 11772
475-7118

Budweiser

On Tap Here

at Gateway



Clare Rose

"Distributors of Fine Brewery Fresh Products"



"We're Patient People"

AMATO FAMILY CHIROPRACTIC
16-2 STATION ROAD ■ BELLPORT, NY 11713

631-286-2300

Infant, Child & Adult Care

Dr. Frank J. Amato

Taking Care of Cast and Crew at Gateway for Over 10 Years

Bellport CHOWDER HOUSE



An Eating and Drinking Tradition

FULL MENU

FULL BAR

Open Daily For Lunch and Dinner
Seven Days A Week

Sunday - Thursday till 11:00 p.m. Friday & Saturday till Midnight

**SPECIALIZING IN FRESH LOCAL SEAFOOD
AT AFFORDABLE PRICES**

*Before and After the Show You'll Want to Meet and Eat At
THE CHOWDER HOUSE*

TAKEOUT

CATERING

19 Bellport Lane • Bellport Village • 286-2343

Bravo



SEARLES
GRAPHICS
INC.

Quality Printing and Innovative Designs...
for all your graphic and printing needs.

56 Old Dock Road • Yaphank, N.Y. 11980 • 631-345-2202
searles@portjeff.net

Gateway Performing Arts
in association with
Gateway Playhouse

presents
CHRISTOPHER YATES
in



Book by **JOHN WEIDMAN**

Music by **DAVID SHIRE**

Lyrics by **RICHARD MALTBY, JR.**

with

**JAMES CELENTANO ALEX DOLLIN EILEEN KADEN LAUREN MUFSON
THOMAS SCOTT PARKER ARLAND RUSSELL**

Based upon the motion picture "BIG" written by Gary Ross and Anne Spielberg
A TWENTIETH CENTURY FOX FILM

Originally Produced on Broadway by
**JAMES B. FREYDBERG, KENNETH FELD
LAWRENCE MARK, KENNETH D. GREENBLATT**
In Association with FAO SCHWARZ - FIFTH AVENUE

Producer
PAUL ALLAN

Associate Producer
JEFF BELLANTE

General Manager
GALE EDWARDS

Casting Director
ROBIN JOY ALLAN

Production Stage Manager
MICHAEL P. CAREY

Company Manager
STANLEY SCHORR

Lighting Design
CHRIS WHITE

Sound Design
GREG REIF

Additional Costumes by
CHERYL RANDAL

Additional Set Pieces by
BRODIE STEELE

Musical Direction
NATHAN HURWITZ

Choreographed by
GINGER THATCHER

Directed by
NANCY ROBILLARD

CAST OF CHARACTERS

(In order of appearance)

Mrs. Baskin.....	LAUREN MUFSON*
Josh (her son).....	ALEX DOLLIN
Billy Kopecki.....	JAMES CELENTANO
Cynthia.....	ELISABETH KIERNAN
Zoltar.....	BEN ARVAN
Big Josh.....	CHRISTOPHER YATES *
Kids.....	MILENA CELENTANO, JESSICA MORTELLARO, A.J. LEBENNS, MEGAN MURPHY, RYAN NICHOLSEN, DAVID ASHBY, THOMAS PACIO, LISA ANN PADULA, NICK SANCHEZ, CLAY WADE, EVAN WOSCHNIK
MacMillan.....	ARLAND RUSSELL*
Miss Watson.....	BETTY ANN HUNT *
Susan.....	EILEEN KADEN*
Paul.....	THOMAS SCOTT PARKER*
Birnbaum.....	DON GARVERICK
Barrett.....	HEATHER OLT
Lipton.....	BRAD BASS
Abigail.....	REBECCA BRANCATO
Nick.....	BUCK HUJABRE
Tom.....	BEN ARVAN
Diane.....	ROBIN LEVINE
Carneys, Panhandlers, Salespeople, Executives.....	KEITH ANDREWS* BEN ARVAN, BRAD BASS, REBECCA BRANCATO, DON GARVERICK, BUCK HUJABRE, BRIAN JOSEPH LAUGHLIN, ROBIN LEVINE, JENNIFER McCAMISH, HEATHER OLT, THOMAS PACIO, MICHELLE PRUIETT, NICK SANCHEZ

UNDERSTUDIES/SWINGS

Understudies and swings never substitute for listed players unless a specific announcement is made at the time of the performance.

UNDERSTUDIES

Mrs. Baskin.....	BETTY ANN HUNT*
Miss Watson.....	HEATHER OLT
Josh Baskin.....	BUCK HUJABRE
Paul.....	BRAD BASS
Susan.....	ROBIN LEVINE
MacMillan.....	BEN ARVAN

MUSICIANS

Conductor/Keyboards.....	NATHAN HURWITZ
Synthesizer.....	FRAN LIEBERGALL
Reeds.....	FRANK BASILE & PATIENCE HIGGINS
Trumpets.....	DAN YEAGER
Trombone.....	KENICHI NINOMIYA
Bass.....	JORDAN JANCZ
Drums.....	JEFF FARRELLO



*Actors employed in this production are members of Actors' Equity Association, the union of Professional Actors and Stage Managers in the United States.



The Musicians employed in this production are members of the American Federation of Musicians.

SCENES AND MUSICAL NUMBERS

ACT ONE

"Overture".....	ORCHESTRA
Scene 1: Suburban New Jersey neighborhood	
Opening.....	MRS. BASKIN, JOSH, BILLY & ZOLTAR
Scene 2: Baskin household	
"Say Good Morning to Mom".....	MRS. BASKIN
Scene 3: Street	
Scene 4: Port Authority Bus Terminal	
"You're a Big Boy Now".....	BILLY & JOSH
"I Want to Go Home".....	JOSH
Scene 5: New York City Toy Store	
"Time of Your Life".....	SALESPeOPLE
"Fun".....	MACMILLAN & JOSH
Scene 6: MacMillan Toys Office	
"Welcome to MacMillan Toys".....	JR. EXECUTIVES
"MacMillan Toys - Part 2".....	MACMILLAN, JOSH, BILLY, PAUL & SUSAN
Scene 7: After dinner	
"Let's Not Move Too Fast".....	SUSAN
"Do You Want to Play Games".....	JOSH
"Stars".....	JOSH & SUSAN
"Little Susan Lawrence".....	SUSAN
Scene 8: Annual MacMillan Bash	
"Cross the Line".....	JOSH, KIDS & GROWN-UPS

ACT TWO

"Entr'acte".....	ORCHESTRA
Scene 1: Josh's old neighborhood	
"It's Time".....	BILLY & KIDS
"Stop, Time".....	MRS. BASKIN
"The Nightmare".....	KIDS
Scene 2: Susan's office	
"Dancing All the Time".....	SUSAN
"I Want to Know".....	LITTLE JOSH
Scene 3: Offices of MacMillan Toys	
"Coffee, Black".....	EXECUTIVES, SECRETARIES, JOSH, SUSAN, MISS WATSON, MACMILLAN
Scene 4: Nick & Abigail's apartment	
"The Real Thing".....	SUSAN & FRIENDS
Scene 5: The roof/terrace	
"The Real Thing" - Reprise.....	SUSAN
Scene 6:	
"Big".....	JOSH
Scene 7: A warehouse	
"We're Gonna Be Fine".....	JOSH & SUSAN

The World Speaks in Over 1900 Different Languages, but sees in only one...

PHOTOGRAPHY, the universal language

MICHAELS CAMERA CENTER

18 East Main Street, Patchogue, New York

475-4173

Your Total Imaging Center
Full Digital Capabilities...
Prints from Any Source!



Swezey's... A Store On The Go!



Swezey's...a department store offering everything from the latest fashions for the family to furnishings for the home!



Service is key...including free giftwrapping...all the time! You'll find your favorite brand names & prices that will make you smile!



Fall 2000 look for the completion of Swezey's new home...a brand new store located at the west end of Main Street in Patchogue!



*1 Main St., Patchogue, 475-0280
Open Monday thru Friday 'til 9 pm;
Sat. 'til 6 pm & Sundays 11:30-5*

*Other Locations:
Main St., Riverhead;
3 Village Shopping Plaza, E. Solauket
Great So. Bay Shopping Ctr., W. Babylon;
School St., Glen Cove*



The House Staff

It takes a small army to keep a theater like Gateway Playhouse running smoothly. The House Staff, which consists of the house managers, box office personnel, concession and parking attendants, and ushers, are often the first and only contact the theatergoer has with Playhouse personnel.

Nancy Kana, the box office manager, started over 30 years ago when there were only 10 weeks in the season. Nancy had worked with Harry Pomeran, Gateway's founder, on a church Christmas pageant and he asked her if she would be interested in a summer job selling tickets. "We could do it then with just two girls," remembered Nancy, "and we counted tickets by hand." The current box office was one third its size then, and a second one for this-performance-only tickets stood where the men's room is now. When computers were brought in five years ago, Nancy at first was skeptical. "I thought, that's it, this is my last year. But little by little it came to me, and everybody was so patient, and the following year I couldn't believe I was teaching other people how to do it!" As box office manager, Nancy supervises the employees working in Gateway's three box offices in Bellport, at Patchogue Theatre, and at the Smithaven Mall location. "We don't have someone just answering the phone or just working the window, you have to take care of the whole customer, and that adds variety to the work," Nancy said.

Nancy's husband Mil has managed the

concession at Gateway since he retired from his job in 1983. Mil is very proud of his staff, who double as parking attendants, "these men are a pleasure. They are hard workers and know exactly what to do, it makes my job easier." With the addition of the Patchogue Theatre there is a second bar to staff, but Mil prefers Gateway. "This is home," he said.

Patrons to Gateway Playhouse and Patchogue Theatre for the Performing Arts can always count on a friendly hello as their tickets are torn, and efficient seating by the ushering staff, who are all volunteers. New trainees are paired with one of the experienced ushers, taught how to greet people, take tickets, seat patrons properly, and be courteous. They learn how to stock the theater with playbills and make sure the theater is clean and safe before the doors are opened. Two ushers are scheduled for each side with a floater who drifts between. Because they are volunteers, they are not assigned work, instead they tell the head usher which nights they would prefer to work, then if the theater is short, the head usher calls through the roster to ask someone to fill in. Marie Rachek began ushering as a way to meet people and get out of the house after her husband died and she retired. "I enjoy ushering, we have a good rapport and it is like family," said Rachek, a grandmother of four, "I miss it when there aren't any shows! Everyone talks to each other on the phone, and we like to see each other outside of the theater." Adding the

LYONS FUEL OIL CO. INC.

24 Hr. Service est. 1934 Automatic Delivery

23 Station Road • Bellport, New York 11713
Phone (631) 286-0395 • Fax (631) 286-0396

CANDY CRAVINGS

128 South Country Road
Bellport Village, NY 11713
(631) 286-6100



COLLINS & MAIN
Restaurant and Lounge



Sayville's Culinary Crossroads

"SUPERB"
- ZAGAT -

Piano Lounge/
Live Entertainment

Pre-Theater Pre Fixe

100 Old South Main Street
Sayville

(631) 563-0805

10% Off Dinner
(excluding beverages)

with presentation of show ticket
from Summer/Fall 2000 season



House Staff (con't)

Patchogue Theatre to their duties was at first a little stressful, since the ushers had to learn the new seating plan and the larger theater means more ushers need to be scheduled for each show, but they are thrilled to be watching the rebirth of the former vaudeville house. "It is fun watching it grow, and they are all working so hard to make it happen," said Rachek. Marian Harrison, another Gateway usher, said, "It looked so dismal before, now so many Patchogue people have told me how it is so great, they come into the lobby and it is spectacular." Anyone interested in becoming a volunteer usher should call Gateway Playhouse's office at 286-0555.

The House Manager is responsible for seeing that the show starts on time, and is the one to handle any emergency. Lori Parr, Elizabeth Bender and Kelly Adee split the duties of house manager between the two theaters. While the patrons are claiming their tickets, the House Manager gets ready to allow patrons to enter the theater. "I make sure before we let people in that the technical staff are ready," explains Parr. "Then I open the House, making sure people get in quickly so we can start the show on time." The House Manager makes the warning announcements through the lobby, then tells the technician in the sound booth when she's ready to start, and he relays the information backstage to the Stage Manager. The House Manager also handles any seating problems with people in

If you would like to advertise in this
Playbill, please contact Pam Young at



631-345-2202 or 516-459-1893

the wrong seats, or who came on the wrong night, or who are unhappy with their location. Parr has had to call ambulances when patrons have become ill, and once had to call the police. "A man and a woman, who were not together, had a fight right in the middle of A CHORUS LINE," she said. "I asked them to stop, or leave, but they then got into a physical fight in the lobby at intermission. So I had to call the police, but by the time they came, the man had fled." The House Manager also handles evacuation in case of a fire alarm and is generally responsible for making sure the patrons have a safe experience.

"I see our jobs as making the people smile, and I tell our employees to remember we are almost always the only people that patrons talk to at Gateway," said Nancy. "I think it is important that the people see the spirit of the Allan family through us."

SUFFOLK COUNTY PARKS

Presents:

"Biographies on Stage" 2000

At Deepwells Farm - Rte. 25A, St. James
LIE -Exit 56N, Rt 111 to Rte 25A.



Lillian Russell

At the turn of the century, Lillian Russell was acclaimed as America's greatest musical-comedy star. A striking beauty with a magnificent operatic voice, Russell was a precursor to Mae West and Marilyn Monroe.

Sept. 7 - Oct. 15

(Thurs. - Sat. 11:30 am; Sun. 4:00 pm)

*Producer's Performance -Oct. 15 - 4:00 pm

Admission: \$30 includes
Performance & Light Lunch
RESERVATIONS A MUST!

Call (631) 862-6080

Friends
for
Long
Island's
Heritage

Robert J. Gaffney,
County Executive



www.gudephotography.com



631-654-8093

Varney's

Restaurant

Fresh Seafood Daily
Marinated Steaks

Mon - Thur 11am - 9pm Fri & Sat 11am - 10pm
Closed Sunday

Located on Montauk Highway in Brookhaven
286-9569

Debra Canavan
CLASSICS
Casual Career and Cocktail

micheal stars
new man
for joseph
theory
tommy bahama
jenne maag
nicole miller
brighton leathers
lilly pulitzer
shoshanna
A.B.S.
flax
and much more

53 Main Street
Sayville

631.563.9385



FEATURED
PERFORMERS...

Alexander
Blake
Dollin



and



James
Celentano

Shakespeare once wrote, "A friend is, as it were, a second self," and never was the relationship between two friends more important than in *BIG*, whose entire plot hinges on the friendship between two adolescent boys as one goes through the trauma of becoming an adult overnight. The two boys who play Josh and Billy in Gateway's production, Alex Dollin and James Celentano, are using both stage experience and a newly forged friendship as their tools to convey the bond between their characters.

Dollin used to put on shows for his babysitters when he was just a toddler. At age five, his parents put him in a show at the YMCA where he got hooked. "I loved the feeling of being on stage and being in front of people," he said. Celentano began when his chorus teacher singled him out for encouragement, and he started taking voice lessons around age 10. "Then I began doing Backyard Theater, which is a community group," he explained, "That got me comfortable in front of people. Then I began attending Gateway Acting School about four years ago, where I basically learned everything!" *BIG* will be Celentano's fourth Main Stage show at Gateway, he also appeared in *STATE FAIR*, *TITANIC*, and *PIP-PIN*. Dollin also performed in community theater and some regional theaters, eventually auditioning for and winning a part in *A CHRISTMAS CAROL* at the Theater At Madison Square Garden. "That was a great experience, playing Scrooge when he was eight years old, and also Jonathan," he said. He will be going to high school this fall in Huntington, and performs in school plays in Westhampton. "I try to do straight plays there to get experience with comedy, which I really like. And it is helpful for this role of Billy."

At this point, Celentano is still undecided about his future. "I think this is what I really want to do, although my parents would like me to be a doctor like my father! I would like to go to

California to try to do TV," he said. He spent some time this winter in Los Angeles auditioning for pilot season and hopes to eventually write and direct. "I love musical theater and would never want to only do one thing. It would be great to do everything!" he said. Dollin definitely wants a career in theater. "I love stage lighting and technical stuff, but I also love acting. Right now I couldn't decide between the two. There is a certain feeling you get being on stage. But whatever I do, I will always stick with theater," he said. One of his favorite Gateway shows was *TOMMY*, which appealed to the lighting designer in him. "That was really great! They had TVs, and it was really cool!"

This is Celentano's first production of *BIG*. "Billy is like the typical know-it-all teenager, but he has to have something special about him so that everyone likes him; he is like the heart of the show," he said. Dollin has performed in other productions of *BIG*, playing both Young Josh and Billy. "Playing Young Josh, I had to work with the actor who played Big Josh so that it would seem like we were the same person, we worked it out so that if I did something on stage, he would pick it up, too." His favorite role was Dodger in *OLIVER!* but he would most like to play Big Josh or either Carriere or The Phantom in *PHANTOM* once he grows up. "I'd rather be in a musical theater show," he said. "In real life you don't burst out into song! It is fun when you can just do that."

"When we were at the audition, we just became friends while we were waiting," said Celentano. "And in this show you have to behave as though you've been best friends for years, that's one of the most important things, I think." Even though the rehearsal process consumes all his time, Celentano doesn't care. "If you don't like it, I don't see how you could do it. But if you love it, it is like heaven for those two weeks. Me and Alex hang out every day, and it is just cool."

2001 Gateway Playhouse Survey

Gateway Playhouse is planning its 2001 Season. As usual, we will be awaiting the newest releases from Broadway to present to you. These exciting options are: *RAGTIME*, *SMOKEY JOE'S CAFE*, *CATS*, *FOOTLOOSE* and *MISS SAIGON*. In addition to these shows, we have listed below other musicals also under consideration. Please let us know ten shows you'd like to see by numbering them from one to ten, (one being your favorite.)

- | | |
|--|--|
| <input type="checkbox"/> Funny Girl | <input type="checkbox"/> Oliver |
| <input type="checkbox"/> The Scarlet Pimpernel | <input type="checkbox"/> Mame |
| <input type="checkbox"/> High Society | <input type="checkbox"/> Oklahoma |
| <input type="checkbox"/> On the Town | <input type="checkbox"/> Fiddler on the Roof |
| <input type="checkbox"/> No, No, Nanette | <input type="checkbox"/> Hair |
| <input type="checkbox"/> Porgy & Bess | <input type="checkbox"/> She Loves Me |
| <input type="checkbox"/> Some Like it Hot | <input type="checkbox"/> Candide |
| <input type="checkbox"/> Gigi | <input type="checkbox"/> Personals |
| <input type="checkbox"/> Zorba | <input type="checkbox"/> Annie |
| <input type="checkbox"/> Bye Bye Birdie | <input type="checkbox"/> Pirates of Penzance |

Please hand this in to our Box Office Staff. Thank you for your help!

ACTING AND MUSICAL THEATRE TRAINING

*Classes now
enrolling!*

all levels of acting for all ages thru adult

GATEWAY ACTING SCHOOL

LEARN FROM THE PROFESSIONALS!

286-9014



WHO'S WHO...

KEITH ANDREWS (*Ensemble/Asst. Choreographer/Dance Captain*) is thrilled to be returning to Gateway Playhouse after previously performing in *THE MUSIC MAN* and Candlewood Playhouse's production of *7 BRIDES FOR 7 BROTHERS*. He has toured extensively throughout the US and Europe as well as performing at many regional theatres throughout the country. Credits include *WEST SIDE STORY*, *MAME*, *7 BRIDES FOR 7 BROTHERS*, *THE GOODBYE GIRL*, *A CHORUS LINE* and *THE RADIO CITY CHRISTMAS SPECTACULAR*. Earlier this summer Keith directed productions of *FOREVER PLAID* and *BABY* and will be choreographing *JOSEPH AND THE AMAZING TECHNICOLOR DREAMCOAT* later this August. Love always and forever to his wife Theresa.

BEN ARVAN (*Zoltar/Tom/MacMillan Understudy*) is happy to appear at Gateway for the first time. He originated the role of Compeyson in the world premiere of *GREAT EXPECTATIONS*, *THE MUSICAL* in Hilton Head, SC. Other credits include *MAN OF LA MANCHA*, *CAMELOT* and *THE FANTASTICKS*. Ben is originally from Wisconsin.

BRAD BASS (*Lipton/Paul Understudy*) is very excited to join Gateway Performing Arts. Originally from Ringgold, VA, he moved to New York City to attend the American Musical and Dramatic Academy, from which he graduated in May. Brad would like to thank God for his many blessings and gifts and his friends and family (Mom & Dad) for their undying love and faith. Bubbe Love & Strawberries!

REBECCA BRANCATO (*Abigail/Salespeople*) recently returned to NYC from the European Tour of *WEST SIDE STORY* as Consuelo and the understudy for Anita. She was also in the European Tour of *SOPHISTICATED LADIES*. She is in both *Orpheus and Foot & Fiddle* Dance Companies in NYC. Graduated from Oklahoma City University with a Bachelor of Performing Arts Degree. Here at Gateway she has performed in *PIPPIN*, *SOUTH PACIFIC*, played Ginger in *WHOREHOUSE* and Josie in the premiere of *YANKEE DOODLE DANDY*. She also performed in various regional theaters as (Adelaide) *GUYS & DOLLS*, (Joan) *DAMES AT SEA* and (Hodel) *FIDDLER ON THE ROOF*. My love goes out to God, mom, dad, family, friends and Philippe.

JAMES CELENTANO (*Billy*) is very excited to be a part of *BIG*. He was last seen on Gateway's main stage in *PIPPIN* and in the Long Island premiere of *TITANIC*. Favorite roles include *OLIVER* (Artful Dodger), *SCABBY LEPPERS* (Jack), *ALADDIN* (Aladdin), *FAIRY TALE SQUARES* (Jack), *ZOMBIE PROM* (Joey), and *SWEENEY TODD* (Tobias). James attends the Gateway Acting School, and would like to thank his family, friends (especially Meg and Jess!), and ALL the great people here at Gateway.

MILENA CELENTANO (*Kid*) is thrilled to be returning to Gateway Playhouse's mainstage after appearing in *THE WIZARD OF OZ* and *STATE FAIR*. Other shows include *OLIVER*, *PINOCCHIO*, *SWEENEY TODD*, *ALADDIN* (Abu) and *FAIRYTALE*

SQUARES (Meghan Best). She has been enrolled in the Gateway Acting School for 3 years and loves taking dance at Stage Door. Milena would like to thank Robin for giving her so many wonderful opportunities, her parents and friends for being so supportive and Mrs. Mesiana for a great start.

ALEX DOLLIN (*Young Josh*) is thrilled to be making his Gateway Playhouse debut in this wonderful production of *BIG*. Alex appeared on Broadway in *A CHRISTMAS CAROL '97* with Hal Linden and Roddy McDowell and Off-Broadway in *TALES OF AN ADOLESCENT FRUIT FLY*. Recently he has played principal roles in staged readings of two new musicals, *SAY YES!* and *ELVIS DREAMS*. Favorite Regional Theater appearances include, The Tilles Center premier of *THE PRINCE AND THE PAUPER* (Lord Matthew Squeak), *THE KING AND I* (Prince Chulalonghorn); *MAME* (Young Patrick); *THE SOUND OF MUSIC* (Kurt); *PHANTOM* (Young Erik); *TO KILL A MOCKINGBIRD* (Dill); *OLIVER!* (Oliver, Artful Dodger); *CAMELOT* (Tom of Warwick); and *GEORGE M!* (Young George). When not on stage or in school, Alex is the MC for his own DJ company, "Super Sound Entertainment". Special thanks to Robin for this awesome opportunity and as always, all my love to Mom, Dad and Erica for their undying support.

DON GARVERICK (*Birnbaum/Ensemble*) is thrilled to be a part of the summer season at Gateway. Featured roles this season include the Aggie Tap

Specialty in *WHOREHOUSE*, MacAffrey in *SOUTH PACIFIC*, and Young Lou in *YANKEE DOODLE DANDY*. He comes to Gateway after a stint as Assistant Director & Choreographer of *AREA 51-THE MUSICAL* at the Sanford Meisner in NYC. Recent performing credits include *Snoopy in SNOOPY!!!* (Penguin Rep), Will Parker in *OKLAHOMA!*, Roger in *GREASE!*, The Bellhop in *LEND ME A TENOR* (Millbrook Playhouse), Andy Lee understudy in *42ND STREET* (Rockwell), King Simon of Legree in *THE KING & I*, and Carnival Boy in *CAROUSEL*; (Struthers Library). Thanks again and again and again to Mom, Dad and Danielle. Geranimo Scott!

BUCK HUJABRE (*Nick/Josh Baskin Understudy*) started revolution in *EVITA* (Montreal Opera), hit home runs in *DAMN YANKEES* (Downtown Cabaret Theatre), covered the *STATE FAIR* (Fireside Playhouse), and was royalty in *KISMET* (Augusta Opera). While on the *SHOW BOAT* national tour, Buck logged 69,000 miles and visited 42 states and Canada. Other regional: *SHE LOVES ME* (Bristol Riverside Theatre), *JOSEPH...DREAMCOAT* (Carousel Dinner Theatre), and *THE NEW MOON* (Ohio Light Opera). Film/Television: *Interview with the Vampire*, *ABC's Boy Meets World*, *NBC's 3rd Watch*, and Nickelodeon's *Welcome Freshmen* (look closely, you might miss him). He is currently co-starring in *My Life with Brooke* which is destined for a very long run.

CAVANAUGH'S

"Let's Have Fun"

Est. 1986

◆ New Smoke-Free Dining Room ◆

Serving Lunch Daily Starting at 11:30 • Dinner Served Every Night

Dining Room Open Sunday - Thursday Till 11 PM

Friday And Saturday Till 12 Midnight

DINING SPECIALS

Mondays - 2 For 1 Chicken Wings

Tuesdays - 20 Oz. Porterhouse \$10.99 • Thursdays - Prime Rib \$11.99

Kitchen Open

Sunday - Thursday Till 12 Midnight

Friday and Saturday Till 2 AM

17 TVs - Quick Draw



255 Blue Point Avenue, Blue Point

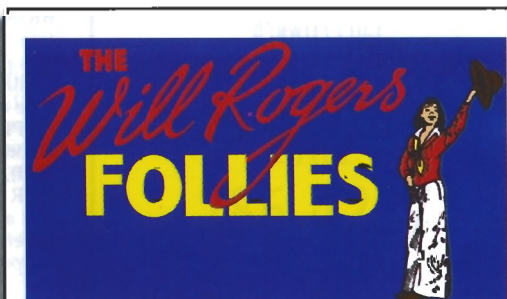
631-363-2666

www.eveningout.com/cavspub • www.bluepoint.org

Our 50th Anniversary Season
continues with these exciting shows!



Continues thru Aug. 26



AUG. 30 - SEPT. 16

ON SALE NOW!

BOX OFFICE HOURS - 7 DAYS -
Monday - Tuesday 10:00 - 5:00 p.m. • Wednesday thru Saturday 11:00 - 9:30 p.m. • Sunday 12:30 - 7:00 p.m.

PHONE ORDERS 286-1133

(VISA & MC Only) No checks accepted on day of performance.

114 WEST MAIN STREET
PATCHOGUE, NY 11772

PHONE 475-4774

FAX 207-0267

TRIO
FINE FOOD & DRINK

KEVIN STAHL

CHEF/OWNER

PLEASE CALL FOR RESERVATIONS

10% OFF DINNER

WITH PRESENTATION OF A SHOW TICKET FROM

SUMMER/FALL 2000 SEASON

WHO'S WHO...

BETTY ANN HUNT (*Miss Watson/Mrs. Baskin Understudy*) has just returned from performing the role of Dorothy Brock in the European tour of 42nd STREET. Gateway audiences may remember her from her performances last season as Mrs. Smith in MEET ME IN ST. LOUIS and the controversial Charlotte Cardoza in TITANIC. Favorite roles include GYPSY (Mama Rose), HELLO, DOLLY! (Dolly) and DAMN YANKEES (Meg). Regional: PHANTOM (Carlotta), INTO THE WOODS (Baker's Wife), THE MYSTERY OF EDWIN DROOD (Princess Puffer), and FOLLIES (Carlotta). Betty Ann performs regularly in cabaret venues throughout New York and has most recently been seen in THREE BROADS SINGING TO BEAT THE BLUES for the American Theatre Wing. She is thrilled to be a part of BIG as she continues to live her dream.

EILEEN KADEN (*Susan*) is thrilled to be back at the Gateway Playhouse, having previously performed here as Marty in GREASE. She has toured the US and Japan extensively in the National Tours of JESUS CHRIST SUPERSTAR as Mary and WEST SIDE STORY understudying Maria. Eileen has just returned from 8 months in Europe performing as Janet in THE ROCKY HORROR PICTURE SHOW where she met her incredible fiancé, Bradley Dean. Love and treats to Millie and Sam.

ELISABETH KIERNAN (*Cynthia*) is a senior at Babylon High School. She is thrilled to be appearing on Gateway's main stage and is very excited to be a part of this production. This is her fifth year attending Gateway's acting school and her tenth year taking dance lessons. Elisabeth was last seen as Dorothy in her school's production of THE WIZARD OF OZ. She would like to thank her mother for all her patience and Robin for this wonderful opportunity.

BRIAN JOSEPH LAUGHLIN (*Ensemble*), Originally from Nebraska, Brian moved to NYC to, as his parents put it, "waste his life away and end up dead in an alley." Fortunately, he is still alive and wasting his time most recently at Gateway in SOUTH PACIFIC, PIPPIN, WHOREHOUSE & YANKEE DODDLE. Before Gateway he was seen in WEST SIDE STORY (Riff), DAMN YANKEES (Bomber), MUSIC MAN, OUR TOWN (George), GLASS MENAGERIE (Tom) and a bunch of TV and Films that you've probably never heard of. Thanks to my family for all their love, support and most importantly their cash.

ANDREW (AJ) LEBENNS (*Kid*) is an energetic, enthusiastic and funny 12 year old. He's a seventh grader and is thrilled to be making his first appearance on the Gateway stage. AJ was involved in his school production at Dayton Avenue School in Manorville this past year. Besides acting, AJ enjoys

drawing, playing soccer and wrestling in his free time.

ROBIN LEVINE (*Diane/Susan Understudy*) is very happy to be spending her summer at Gateway Playhouse. She is a recent graduate of the University of Illinois at Urbana-Champaign, where she received a BFA in Dance. She has spent this past year dancing in YULETIDE CELEBRATION with the Indianapolis Symphony Orchestra and as a Gemini Twin in A FUNNY THING HAPPENED ON THE WAY TO THE FORUM. She recently portrayed Dawn in Gateway's production of BEST LITTLE WHOREHOUSE IN TEXAS as well as Alice Nolan in the premiere production of YANKEE DOODLE DANDY. Thank you to my family for their constant support and love.

JENNIFER MCCAMISH (*Salespeople*) is a graduate of the University of Texas in Austin with a Bachelor of Arts in dance. Her educational and professional career has stretched worldwide with scholarships and training in London, L.A., New Orleans, and New York. Jennifer has a diverse repertoire which includes professional performances of THE NUTCRACKER with the Delta Festival Ballet to soloist with the Delia Stewart Jazz company and Dance Repertory Theater. Other performances include WHOREHOUSE (Linda Lou), HERE'S LOVE (Dance Captain), OKLAHOMA, TAP GIRLS, LEGENDS IN CONCERT, and Gateway's most recent performances of YANKEE DOODLE DANDY. She also starred as Barbie for Mattel toys. Lots of love and thanks to my family.

JESSICA LARA MORTELLARO (*Kid*) is thrilled to be returning to Gateway. She was last seen on the main stage in TITANIC. She also played Brigitta in Gateway's production of THE SOUND OF MUSIC. Jessica has been a member of the Gateway Acting School for 8 years and has performed in many children's theater shows, her favorite roles being Jasmine, Snow White and Little Red. Other credits include Mary in THE SECRET GARDEN, title role in ANNIE, Coco in ZOMBIE PROM, Little Red in INTO THE WOODS, Lili in CARNIVAL, Beggar Woman in SWEENEY TODD, and Baby June in GYPSY at the Carousel Dinner Theater. Jessica would like to thank Robin and everyone at Gateway for all of the wonderful opportunities they have given her.

LAUREN MUFSON (*Mrs. Baskin*) has performed on *The Rosie O'Donnell Show*, at a Super Food Town in New Jersey, in hospitals, smokey bars and Target stores. Theater credits include A NEW BRAIN at Lincoln Center, GROUNDHOG at Manhattan Theater Club, the pre-Broadway production of KISS OF THE SPIDER WOMAN, and lead roles in regional productions of SIDE BY SIDE BY SONDHEIM, THEY'RE PLAYING OUR SONG, OLIVER! and MAN OF LA

Irish Coffee



Hub

at

**Bellport
Country Club**

always open to
the public.

The favorite for
pre- and post-show
dining.

Conveniently located between
Gateway Playhouse and
Patchogue Theater on
SOUTH COUNTRY ROAD, in
BELLPORT VILLAGE

Available for groups and
small parties.

FOR RESERVATIONS

CALL

286-4227

Also visit

Irish Coffee



Hub

on CARLETON AVENUE
in EAST ISLIP

277-0007

LongIslandArt.Net

Because we are proud of where we live...



211 Mastic Beach Rd.
Mastic Beach,
New York 11951

True Value

(631) 281-8744
Fax (631) 281-4651

PAPA NICKS PIZZA



Gyros, Salads, Heros, Dinners
Daily Lunch Specials

286-6400

117C-South Country Road, Bellport Village, NY

**THE
BANK OF
NEW
YORK**
LONG ISLAND REGION

24-hour ATM
BELLPORT BANKING
OFFICE LOCATED AT:

32 Station Road
Bellport, New York 11713

Virginia Asero
Assistant Vice President

(631) 286-4200

Member FDIC 1986 The Bank of New York

Cilantro's

*Eclectic New American Cuisine
Fine Dining and Cocktails*

- Pre Theater Dinner Specials -
- Live Jazz on Friday Nights -
- Price Fixe Menu Always Available -

*Join Us Before or After
The Theater For A
Cocktail, Cappuccino or Dessert*

154 Montauk Highway,
Blue Point, New York 11715

Tel. 631-363-0500

Fax. 631-363-0506

www.menusonline.com

WHO'S WHO...

MANCHA amongst others. She played a worried mother on *Unsolved Mysteries* and is thrilled to be playing another one here at Gateway.

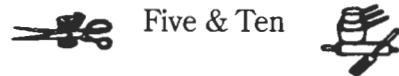
MEGAN MURPHY (*Kid*) is very happy to be back on the main stage at Gateway. Megan has been in a numerous amount of shows at Gateway and other regional theaters. She also has been taking dance classes for ten years and has studied acting and singing at Gateway's acting school. In her school Megan is on her JV softball team and is captain of her JV cheerleading team. She would like to thank Robin for giving her this opportunity to be in this show and Renee for all these years of dance lessons. She would especially like to thank her family for all their love and support.

RYAN NICHOLSEN (*Kid*) is a 13 year old student at South Manor Schools who is entering the 8th grade. Ryan has participated in many school activities including cross country, basketball and volleyball. His enthusiasm for acting began in the fall of 1999 with Mr. Minutillo. He performed in the FRENCH CAFE as a waiter and in the spring production of OUR TOWN played Joe Crowell. He also is fond of playing the piano and is an avid roller hockey player.

HEATHER OLT (*Barrett/Ensemble/Miss Watson Understudy*) is thrilled to be spending her summer at Gateway. Recently, she portrayed Angel in Gateway's production of WHOREHOUSE. Prior to that, she galvanized around the country as Meg in BRIGADOON. Other favorites include: PIPPIN, YANKEE DOODLE DANDY, INTO THE WOODS (Cinderella), GODSPELL (Sonia), BIG RIVER, THE MOST HAPPY

THE VARIETY MART

An Old Fashion
Five & Ten



138 Main Street
Bellport, New York 11713

631-286-2210

BELLPORT PAINT & WALLPAPER

COMPLETE PAINT & WALLPAPER SUNDRIES

- PERSONALIZED SERVICE •
- COMPUTER COLOR MATCHING •



631-286-5850

145 South Country Rd.
Bellport, NY 11713

FELLA, THE MIKADO and Queen Vashti in the new musical QUEEN ESTHER. She received a BFA in Music Theatre from Illinois Wesleyan University. She would like to thank God for her blessings and family and friends for their endless love and support. Momma Jo, this one's for you!

THOMAS PACIO (*Kid*) is happy to be making his Gateway debut this season. A graduate of The Tisch School of the Arts at NYU, Tom holds a BFA in drama. Some past credits include A CHORUS LINE (Paul), GYPSY (Tulsa), WEST SIDE STORY (Pepe) and various new musical workshops. Special thanks to all friends, the gang at CRC, and especially to his family without whom he would be nothing.

LISA ANN PADULA (*Kid*) is thrilled to be making her debut at Gateway Playhouse. She has appeared in THE MUSIC MAN as Amaryllis, ANNIE as Annie, and A CHRISTMAS CAROL as Belle, just to name a few. She has appeared in a new television series, *The Beat* as Claire Oleska (the babysitter). She would like to thank Robin for introducing her to this great, new atmosphere, the cast and crew for their love and support and, of course her mother, "the perfect fan".

THOMAS SCOTT PARKER (*Paul*) is really excited about getting to spend a few summer weeks by the beach here in Patchogue. Thomas recently finished performing in The Guthrie Theatre's production of A MIDSUMMER NIGHT'S DREAM. He has spent three seasons with The Utah Shakespearean Festival performing in ROMEO AND JULIET (as Romeo), HAMLET (as Fortinbras), HENRY V (as the Boy), JOSEPH AND THE AMAZING TECHNICOLOR DREAM-COAT (as Potiphar), THE BOYFRIEND, and THE MIKADO. He has also performed at The Fulton Opera House in A MAN FOR ALL SEASONS, and The California Shakespeare Festival. Thomas is originally from the San Francisco Bay area and received a BFA in Drama from Carnegie Mellon University.

MICHELLE PRUIETT (*Receptionist/Salespeople*) is very glad to be here for her first season at Gateway. She just portrayed Shy in Gateway's WHOREHOUSE. Recently her credits include: A CHRISTMAS CAROL (Shawnee Playhouse), featured soloist in "PATTERNS: A MALTBY AND SHIRE REVUE," and a season at New London Barn. "I'd like to thank all my loved one's for their support. Thank you!"

ARLAND RUSSELL (*MacMillan*) is thrilled to be back at Gateway where he appeared last season in 1776 (Franklin), WIZARD OF OZ (Wizard), and HERE'S LOVE (D.A.). He just completed 8 sold out weeks at the Caldwell Theatre in Florida as Frank in OVER THE RIVER AND THROUGH THE WOODS - to which he returns for a 6 week encore after Labor Day. In June, Arland directed the world premiere of THE BIG DANCE for City Theatre in Miami. In NYC, he's directed world premieres for Circle in the Square Workshop, The Double Image, and Playwright's Preview. Recent TV appearances: *Sins of the City* (USA), and *From the Earth to the Moon* (HBO).

NICKY SANCHEZ (*Ensemble*) a sophomore at Marymount Manhattan College is thrilled to be back at

BRICK HOUSE BREWERY & RESTAURANT



PLAYHOUSE DINNER SPECIALS

(Available Sunday-Thursday 4pm-10pm)

Opening Act:

Tossed Salad, Caesar Salad
or Soup

Main Stage:

Choice of:

Sesame Crusted Tuna Steak

Rigatoni ala Vodka

Sliced Marinated Steak

Apple Glazed Roast Loin of Pork

Homemade Meatloaf

Chicken Marsala

- with potatoes & vegetable -

Final Act:

Coffee or Tea Plus

Choice of: Chocolate Stout Cake,

Cheesecake or Carrot Cake

(All soups and desserts made here
on the premises)

Complete Dinner Price...

\$12.95

67 W. Main St., Patchogue

447-BEER

ALL MAJOR CREDIT CARDS

Visit us on the web at

www.brickhousebrewery.com

Coming soon
to our
sister theatre!

**PATCHOGUE
THEATRE**
FOR THE PERFORMING ARTS

71 E. Main St., Patchogue

JUST ADDED!

FOREIGNER

August 29, 8:00



**THE MARSHALL
TUCKER
BAND**

Special Guest:

QUICKDRAW

August 30, 8:00

**THE IRISH
DESCENDANTS**

September 20,
8:00



**THE
ASSOCIATION**

September 21,
8:00

**FRANKLIN'S
BIG
ADVENTURE**

October 7,
2:00 & 5:00



All shows subject to availability and date and/or time change.
All tickets subject to handling and facilities charges.
Multi-Artist acts subject to lineup changes.

Presented By **GATEWAY** PERFORMING ARTS
TICKETS ON SALE IN THE LOBBY
OR PURCHASE ONLINE AT
www.4tixnow.com

WHO'S WHO...

the Gateway main stage after performing in last summer's SHOW BOAT, and A CHORUS LINE. Prior to main stage, you may have seen him right here performing in the children's theater shows such as THE WIZARD OF OZ (Scarecrow) and ALICE IN WONDERLAND (Cheshire Cat). Locally, he's played in THE WIZ (Tin Man), ONCE ON THIS ISLAND (Daniel), A CHORUS LINE (Paul) and BEST FOOT FORWARD (Goofy) - directed by Jon Znidarsic. Special thanks, of course, to "Mommy" and "Daddy", and a big ol' "holla" to the Gateway kids!

CLAY ADAM WADE, JR. (*Kid*) is making his Gateway debut in BIG at the Patchogue Theatre for the Performing Arts. He's in fifth grade at the Quogue School where he has appeared in every school production since kindergarten; including the lead in FREEDOM BOUND in 3rd grade and dual roles in GUYS & DOLLS in 4th. He's a regular performer in the highly successful Talent Shows in Quogue and, as a dance student, has appeared at the Staller Center in Stony Brook and the West Hampton Performing Arts Theater. Clay summers in Patchogue Village and is currently taking second level acting classes at the Gateway Theater. At age 6 he decided his long term goal is to play Gene Kelly in a movie of his life.

EVAN WOSCHNIK (*Kid*) is thrilled to be making his debut on Gateway's main stage. He is a sophomore at Eastport High School. He studies dance at Legwork's Dance Studio and takes voice and guitar lessons at J. Osborne Music. Special thanks and love to God, mom, dad, his sister Amy, the Legworks gang, the J. Osborne crew and all his friends.

CHRISTOPHER YATES (*Big Josh*) Most recently: ENTER THE GUARDSMAN, Vineyard Theatre, Off-Broadway. Other Gateway appearances include Fred Gailey in HERE'S LOVE, Cornelius in HELLO, DOLLY! and George Bailey in IT'S A WONDERFUL LIFE. National Tours include JEKYLL & HYDE as Simon Stride, BLOOD BROTHERS with Petula Clark and David Cassidy; the first and third National Tours of LES MISERABLES as both Jarient and Enjolias; AS YOU LIKE IT with the National Players; and as John Jasper in DROOD. Off-Broadway: HYSTERICAL BLINDNESS and FIXING FRANK. Regional Theatres: La Jolla Playhouse, CA; New Jersey Shakespeare Festival; Olney Theatre, Md.; Hasty Pudding, Boston; Goodspeed; Paper Mill Playhouse.

PAUL ALLAN (*Producer*) is proud to be presenting the 50th season of live theatre here at the Gateway Playhouse. Having grown up in and around the theatre, Paul has been able to watch Gateway "grow up" over the years and expand into many different areas - including Touring productions produced Nationally and Internationally, and a successful set rental company. Paul currently splits his time between the season here at Gateway Playhouse, and the summer concert series at the Patchogue Theatre For The Performing Arts. Some of Paul's favorite projects to date include TOMMY, PHANTOM, and ONCE ON THIS ISLAND on this stage - and TITANIC at the Patchogue Theatre, which was the first live musical presentation on that stage since 1934. Paul is grateful for the support of his

family and staff who are a continuing means of encouragement during challenging times.

ROBIN JOY ALLAN (*Casting and Artistic Director*) has been immersed in theater her whole life, performing, musical directing, teaching, directing, producing and most enjoyably, observing many, many great actors and directors work. In 1985 she began her casting career in New York and then Los Angeles, where she had the pleasure of working with Ron Howard, Rob Reiner, Jerry Zucker and Chris Carter (pre-X-Files!) on several projects as Associate and Casting Director, including: PARENTHOOD, WHEN HARRY MET SALLY and GHOST. She led the search for unknowns, discovering Balthazar Getty for the remake of LORD OF THE FLIES, and cast Leonardo DiCaprio in his first TV series-regular role in 1989's PARENTHOOD. She is dedicated to the educational development of young actors and, along with her husband Lorrin, has founded Gateway Acting School for that purpose. Her greatest accomplishment to date is her beautiful daughter, Hayley Lynn.

NANCY ROBILLARD (*Director*) is thrilled to be directing BIG, having served as assistant director on the original Broadway production. Additional Broadway and Off Broadway credits include TALLER THAN A DWARF, POWER PLAYS, and GOOD AS NEW. She has eclectic taste in projects and has directed a range of productions including large musicals,

one man shows, sketch comedy and dramas, many of which were world premieres. Favorite productions include THE PAJAMA GAME, SOUTH PACIFIC, MASTER CLASS, and THE ELEPHANT MAN. Her work has been seen at Theater for the New City, HERE, Phoenix Theatre, Plays for Living, NYU's dramatic writing program, Tri State Center for the Arts, Leatherstocking Theatre, and Keystone Repertory. She was a teaching artist at Paper Mill Playhouse for three seasons, and has taught acting and directing at the college level. She has an MFA in directing from Illinois State University. Originally from Setauket, Long Island, Nancy lives in New York City with her husband, Vincent.

GINGER THATCHER (*Choreographer*) is an accomplished classical and modern dancer, and choreographer. She danced with Houston Ballet (Apprentice), Cincinnati Ballet, and Cleveland Ballet, where she was a member for ten years, performing Soloist and Principal roles. In 1991, she was invited to join the Lar Lubovitch Dance Co., with which she performed internationally for three years. Ginger has choreographed for opera, ballet, musical theatre, drama, and television. She was Assistant Choreographer for the Broadway shows BIG, THE RED SHOES, CAROUSEL and SWAN LAKE, both of which won Tony Awards, including one for choreography. She has assisted Lar Lubovitch three times with American Ballet Theatre, with THE RED SHOES ballet, A BRAHMS SYMPHONY and OTHELLO. She

Pine Grove Inn
On The Swan River



est. 1910

Open Weekdays

11:30 A.M.

Saturday

11:30 A.M.

Sunday

12:00 P.M.

Waterside Patio
Dining on the
Swan River

**EARLY BIRD
SPECIALS**

Monday thru Saturday, 3 p.m. to 6 p.m.,
Sunday 12 p.m. to 5 p.m.

DINNER

served 3 p.m. to 10 p.m.
Weekdays & Saturdays
Sundays 12 p.m. to 9 p.m.

LUNCH

Monday thru Saturday,
11:30 a.m. to 3 p.m.

Chapel Ave. & First Street • East Patchogue, NY
475-9843

OPEN WEEKDAYS 11:30 AM • CLOSED TUES. • SAT. 11:30 AM • SUNDAY 12 PM
Directions: LIE to Exit 64, Route 112 South to Montauk Hwy. (27A). Make a left (East) on Montauk Highway to fork in road. Take right side of fork then immediate right onto Chapel Ave.

OPEN 6 DAYS A WEEK

CLOSED TUESDAY

CALL 286-1133 or 1-888-4TIXNOW

(631) 475-1790-1791 Emergency Boarding
 Fax (631) 475-1807 Service
 Call 289-1524

**PATCHOGUE
 PLATE GLASS CO. INC.**

GLASS-MIRRORS-PLEXIGLASS-STORE FRONTS
 AUTO GLASS-INSURANCE CLAIMS

RON HENTHORNE 7 Railroad Ave.
 Manager Patchogue, NY 11772



*Pub Fare That Will
 Make Your
 Tongue Smile*

Relax After The Show
 Kitchen Open 11AM to
 11PM, Bar 'til 1AM
 Closed Sun.

Just steps from Theater parking
 70 North Ocean Avenue
 Patchogue

(631) 289-1900

THE NUTCRACKER

presented by

**OVATIONS
 DANCE ACADEMY**

in conjunction with

**The Brookhaven
 Youth Orchestra**

**Dec. 2 and 3,
 1:00 p.m. and 7:30 p.m.**
 at The Patchogue Theatre for the
 Performing Arts

For Ticket Info Call
 Oventions Dance Academy

**Director: Orlando Peña
 631-218-0315**

WHO'S WHO...

assisted Susan Stroman on BUT NOT FOR ME, for the Martha Graham Dance Co. She was Rehearsal Director for Mathew Bourne's SWAN LAKE, on Broadway, and recently was Assistant Choreographer to Lar Lubovitch on Disney's *The Hunchback of Notre Dame*. Her Choreography credits include, the Minnesota Ballet, Ballet Pacifica, Northwest Dance Ensemble, Albany-Berkshire Ballet, Dance Galaxy Dance Co., Lawrence Pech Dance Co., and the Sarasota Ballet, where she won the Triple Circle Choreography Competition. She has choreographed for The Cleveland Playhouse, Cleveland Opera, Glimmerglass Opera, Phoenix Theatre Ensemble, the TV show *As the World Turns*, the Jean Cocteau Repertory Co. (NYC), Amas Theatre Company (NYC), and most recently The Shakespeare Projects' THE WINTER'S TALE. Ginger was nominated for an Achievement in the Arts award as co-founding director of the *New Steps* choreography project in Cleveland, OH. She has been invited five times to participate as a choreographer in the Carlisle International Choreographers Project. She has self-produced *Dances at a Gallery I and II*, in Cooperstown, NY, and *Dances by Ginger Thatcher*, in New York City at the Clark Theatre, Lincoln Center. Other theatre credits include MY FAIR LADY, PHANTOM, WEST SIDE STORY, EVITA, WOMAN OF THE YEAR, PETER PAN and SHOW BOAT.

NATHAN HURWITZ (*Musical Director*) has been a musical director, conductor and arranger for more than twenty years (despite his boyish good looks). Nathan's Broadway credits include BLOOD BROTHERS, DREAM and PHANTOM OF THE OPERA. He has performed all over the world and comes to Gateway after the 1999 National Tour of COMPANY and the 1999/2000 European tour of THE BEST OF ANDREW LLOYD WEBBER. Other tours include: BLOOD BROTHERS (with Petula Clark and David Cassidy), FUNNY GIRL (with Deborah Gibson) and various international companies of PHANTOM and



Dinner Nightly 5 P.M.
 (631) 567-0033
 Pamela Raymond
 Richard Stafford
 199 Middle Road
 Sayville, NY 11782

OSPREY'S DOMINION



**Enjoy some here Tonight!
 VISIT THE WINERY**

Osprey's Dominion Vineyards, Ltd.
 44075 Main Road, Peconic, NY 11958
 (631) 765-6188 • Fax: (631) 765-1903

WEST SIDE STORY - as well as hundreds of Off-Broadway and regional productions. Nathan has had the privilege and pleasure of studying acting with Stella Adler, directing with Jack Gartein and conducting, composition and orchestration with Lehman Engel. With a BFA from NYU and a Masters from Northwestern University, Nathan is steadfastly working on his Ph.D. dissertation and hopes to be "Dr." Hurwitz in the very near future. Nathan lives with his dog Max and is looking for a wonderful woman whom he can acknowledge in future bios.

CHRISTOPHER WHITE (*Lighting Design*) is the resident Master Electrician at the Patchogue Theatre for the Performing Arts. Unlike his title reveals, Chris has extensive knowledge and experience in lighting design, sound design and production management, working professionally for over 6 years. His recent design credits include the national tours of LOST HIGHWAY: THE MUSIC AND LEGEND OF HANK WILLIAMS and PUMP BOYS AND DINETTES. Other credits include SCHOOLHOUSE ROCK LIVE!, MIRACLE ON 34TH STREET, THE MUSIC MAN, and DRIVING MISS DAISY. Christopher has a BFA in Fine Arts and Production Design from the University of Florida. BIG, the musical is Christopher's debut Lighting Design for the Patchogue Theatre and he looks forward to a great year here!

**Morgan's Beach House
 Restaurant**



Lunch & Dinner - Indoor/Outdoor
 363 Grove Ave. Patchogue 631-758-3524
 (closed Mondays)

Swan Bakery

"Serving the Community Since 1946"

Official Baker to the Gateway Playhouse

Guy J. Gagliano • Robert E. Roode

15 South Country Road
 East Patchogue, NY 11772
 Tel. (631) 475-9626

Before or After The Show
 Late Night Dinner • Dessert and Coffee

*All Baking
 Done On
 Premises*

*Breakfast,
 Lunch and
 Dinner*



*Open 7 Days
 6:00 AM - 2:00 AM*

Daily Specials

ROYAL OAK
Diner - Restaurant

Station Road and Sunrise Highway - Bellport, New York 11713

TEL. (631) 286-5757

Bay Street Theatre

"one of the country's pre-eminent regional theatres"
- CBS News Sunday Morning



New and Classic Plays & Musicals,
Cabaret, Chamber Music, Concerts,
Play Readings, Special Events,
and Theatre in the Schools.



For 2000 Season Brochure or Ticket Information,
Please Call: 725-9500

★ Save the date! Summer Gala Benefit Bash ★

★ With guest auctioneers Julie Andrews, Alex Baldwin, and Chevy Chase ★
★ Saturday, July 8 Call 725-0818 ★

ORDER BY PHONE **(631)725-9500** ON THE LONG WHARF, SAG HARBOR

Swezey

FUEL CO., INC. - EST. 1919

Suffolk's Largest Family
Owned Oil Company

- Automatic Oil Delivery Service
- 24-Hour Emergency Service
- Budget Plans That Pay You Interest
- Expert Installation Of Boilers,
Burners, Hot Water Heaters &
Pool Heaters



475-0270

51 RIDER AVE., PATCHOGUE

Ruland

Funeral Home, Inc.

OUR REPUTATION FOR 'EXCELLENCE' HAS ENDURED SINCE 1856

475-0098

500 North Ocean Avenue, Patchogue, New York 11772

Proudly Supporting the Arts
that Enrich Our Lives

A FAMILY-OWNED Funeral Home - The Romeo Family of Patchogue
Discover how affordable 'Excellence' can be!

Mayer's

FLOWER COTTAGE

Family Owned Since 1929

"We Express Your Feelings -
Beautifully"

400 Medford Ave., Patchogue
(One Block North of Sunrise Highway)

(631) 475-1779

COLDWELL BANKER

JOHN ASHLINE

Licensed Associate Real Estate Broker

(631) 289-1400 BUS., (631) 654-5001 FAX
ashline@coldwellbanker.com E-MAIL

BELLBROOK REALTY, INC.
66 MEDFORD AVENUE
PATCHOGUE, NY 11772

Each Office is Independently Owned and Operated

STAGEDOR Dance

CALL FOR SUMMER/FALL
REGISTRATION

PRE-SCHOOL THRU ADULTS • FAMILY DISCOUNTS

654-8858

25 PATCHOGUE-YAPHANK ROAD • EAST PATCHOGUE

Our students have performed at the
Gateway Playhouse Mainstage and Children's Theatre

JIM'S DELICATESSEN

2478 Montauk Highway
Brookhaven, New York
(Located next to the firehouse)

286-2333

Original Home of
the Buy a Pound,
Get a Pound Free Salad

Hot and Cold Catering,
Breakfast and Hot Lunch,
Specialty Sandwiches,
Homemade Soups and
Salads, Wraps

OPEN DAILY 5AM - 10PM



COLEMAN CESSPOOL SERVICE, INC.

ART COLEMAN

475-1733 • 878-2010

Family Owned and Operated
For Over 50 Years

1 Chapel Avenue, East Patchogue, New York 11772

- Dedicated to Honest & Reliable Service •
- Precast Cesspools Installed •
- Portable Toilet Rentals •

ROE AGENCY INC.

OVER A CENTURY OF COMMITMENT
Since 1898

**PERSONAL AND
COMMERCIAL INSURANCE
PROPERTY
CASUALTY
LIFE
HEALTH
FINANCIAL SERVICES**

Walter A. Roe, President
Patricia A. Mankowski, VP and Secretary
Virginia Flynn, VP and Treasurer

125 EAST MAIN STREET
PATCHOGUE, NY 11772-0970
475-4000
FAX 475-7648
E-MAIL: roe@nais.com



Casual Family Dining

**Come Join us Before
or After the Show**

Senior Menu Always Available
Children's Menu Only \$2.99

7 a.m. - 10 p.m. 7 day/week
240 East Main Street,
Patchogue
654-3641



Old Inlet Inn



Fine Dining

Dinners from 5:00 p.m.
Sunday Brunch 12 - 3:00 p.m.
Sunday Dinner 3 - 9:00 p.m.
Closed Mondays

**Ten Minutes From The
Beautifully Renovated
Patchogue Theater**

Show Tune Sing-A-Longs on
Fri. with Jim Ahrend and others
at the Piano 8:30 p.m. - 12:30 a.m.

Walter A. Roe, Prop. Erik C.W. Brown, Chef

**108 So. Country Road, Bellport
286-2650**

**10% Entree Discount
with Theatre Tickets**



631-475-1047
14 South Ocean Ave.
Patchogue
Four Stores
South of Main St.

**Quality Footwear for the Entire
Family Since 1927**

- Helpful, Friendly Service
- Areas Largest Selection
of Sizes & Widths AA-EEEE

Rockport, Easy Spirit, Florsheim, New Balance,
Stride Rite, Selby, Teva, Timberland, Skechers,
Munro, Dexter, Keds, Reebok, Dyeables, Topsider,
Soft Spots, Clarks, etc.

10% OFF any purchase
with ad only

Excludes Easy Spirit, Dr. Martens & other offers. Expires 12/31/00

GATEWAY PLAYHOUSE STAFF

Executive Producers Ruth and Stan Allan
Producer Paul Allan
Associate Producer Jeff Bellante
General Manager Gale Edwards
Casting / Artistic Director Robin Joy Allan
Managing Director - Patchogue Theatre Tim Wilkins
Company Manager Stanley Schorr
Director Nancy Robillard
Musical Director Nathan Hurwitz
Choreographer Ginger Thatcher
Assistant Choreographer / Dance Captain Keith Andrews*
Production Stage Manager Michael P. Carey
Assistant Stage Manager Erin Kraus
Lighting Designer Christopher White
Sound Designer Greg Reif
Sound System Designer Mark Clark
Technical Director Brodie Steele
Master Electrician - Gateway Playhouse Brian Loesch
Master Electrician - Patchogue Theatre Christopher White
Costume Coordinator Cheryl Randal
Wardrobe Assistant Clarissa Smith
Master Carpenter Mark Frederick
Master Rigger A.D. Garrett
Properties Mistress Courtney Alphin
Master Scenic Painter Kim Lecker
Carpenter Nate Hillard
Interns Courtney Alphin, Hillary Matlin
Rentals Supervisor Kristin Hassett
Music Contractor Dan Yeager
Box Office Manager Nancy Kana
House Manager Kelly Adee, Elizabeth Bender, Laurie Parr
Group Sales Nadine Hazard
Box Office Staff Jessica Casamassa, Danielle Frasca, Jodi Grega, Gladys Hawkins,
Matt Kirk, Scott Maguill, Sara Jean Miller, Greg Monteith, Pam Stewart
Administrative Assistant Janet Trahan
House Staff Doug Bernhard, Bob Coupe, Cathy Esposito, Don Harrison,
Earlene Johnson, Mil Kana, Joe Kelly, Robert Nofi, Theresa Pavanella
Maintenance / Landscaping Supervisor Bob Nofi
Concession Managers Mil Kana, Bob Coupe, Bob Nofi, Jr.
Production Photographer Mil Kana
Sound Consultant Dominic Sack
Publicist Linda Unger
General Counsel Ann L. Nowak & Associates

**Gateway Playhouse would like to thank our volunteer staff for their
dedication and support. It is much appreciated.**

Marie Rachek - Head Usher
Ushers - Carmela Aiosa, Olga Belz, June Budd, Martha DeRuiter, Mary Fox, Irene Fritz,
Marian Harrison, Howard Lehman, Pat Siegel, Rita Wehner, Patricia Yurdiga

IF YOU WOULD LIKE TO JOIN OUR VOLUNTEER STAFF CALL 286-0555

WARNING - The photographing or sound recording of any performance is strictly prohibited.

Gateway Playhouse offers a wireless sound enhancement system
for the hearing impaired. Inquire at the box office for more information.

FIRE NOTICE The exit indicated by a red light and sign nearest to the seat you occupy, is the shortest route to the outside. In the event of fire or other emergency, please do NOT run. WALK to that Exit. However, under normal circumstances, when leaving the Theatre, use the center rear exits. SMOKING is prohibited in the BUILDING, as required by the Suffolk County NO SMOKING Ordinance. Smoking in any area designated "No Smoking" renders the offenders subject to a fine, or imprisonment, or both.



Bryan McGowan, 5:30 - 10:00 a.m.

Join Your **wlim**^{STEREO} Family

Monday - Friday



Jack Ellsworth,
"Memories in Melody"
10:00 a.m. - Noon



Bob Stern, Noon - 3:00 p.m.
1-2 BDWY- Hollywood Show

wlim

^{STEREO}

1580 AM

Long Island Music

- Big Bands
- Popular Standards
- Local & Community News
- Daily Prizes

GLENN MILLER

FRANK SINATRA

ROSEMARY CLOONEY

BARBRA STREISAND

NAT KING COLE

DORIS DAY

BENNY GOODMAN

TONY BENNETT

BING CROSBY

Children's Theatre

Live Musical shows! Friday and Saturday mornings at 10:30 a.m.

All Seats \$7.50

Musical Plays With Songs and Dances Your Children Will Love.

FAIRYTALE TRIO



Three Classic Fairytales - Little Red Riding Hood, The Three Little Pigs, Hansel and Gretel
AUGUST 11,12

TOY FACTORY

AUGUST 18, 19, 25, 26,
SEPTEMBER 1, 2

Advance sale general admission tickets are on sale now. Phone orders are also accepted. Remaining tickets are sold at the door, the morning of the show. Sorry, Children ages 2 and older only - No Infants Please. Shows subject to change without notice.



GATEWAY

PERFORMING ARTS

Announces A Special Production Of...



A mystical and imaginative story about a modern day Messiah.

Featuring the hits...
"Oh Bless the Lord, My Soul"
"Day By Day"
"Save the People"
"Turn Back, Oh Man"

A Musical Based On The Gospel According To St. Matthew
"GODSPELL rattles the soul like a tambourine and fills the theatre with its own sense of joy"

FOR ONE WEEK ONLY - NOVEMBER 1-5