



Bringing New York Closer To The World.

American loves New York. And we show it every day with over 200 flights from six tri-state area airports to nearly 260 cities in 40 countries worldwide. For more information call your Travel Agent or American at 1-800-433-7300, or visit us on the web at www.americanair.com

American Airlines
American Eagle

LA GUARDIA • JFK • NEWARK • LONG ISLAND MACARTHUR • WHITE PLAINS • NEWBURGH STEWART

American Airlines and American Eagle are registered trademarks of American Airlines, Inc. American Eagle is American's regional airline associate.

Gateway

PLAYHOUSE

50th Anniversary Season



Pippin

The Best Little Whorehouse In Texas

Big

Yankee Doodle Dandy

South Pacific

The Will Rogers Follies

GATEWAY
PERFORMING ARTS

summer
2000 playbill

*For peace of mind...
Take the time*



MAMMOGRAPHY SAVES LIVES

Mammography facility with full ACR accreditation & FDA certification


Women's Health Services
285 Sills Road • Building 5-6 • Suite E • Patchogue, New York 11772

For more information or to schedule an appointment for
Mammography, Ultrasound or Bone Density Testing
Call (631) 654-7700 or 654-7114

Marilyn Lerner, M.D., D.A.B.R. ~ Ronald S. Hames, M.D., D.A.B.R.
Ira J. Langer, M.D., D.A.B.R. ~ Daniel F. Settle, M.D., D.A.B.R.



TREASURES OF YEARS GONE BY

The warmth of gold and the artistry of radiant platinum... We invite you to come in and select from our collection of new and period treasures. Specializing in design and remounts.

Turn your unwanted jewelry into cash.

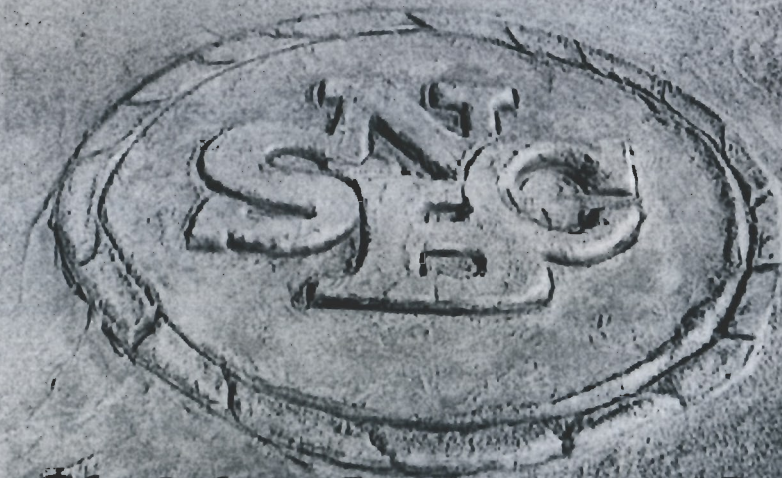
W^{m.} J. O'Neill

Sales Exchange Co., Inc.
Jewelers and Collateral Loanbrokers
One East Main Street • Patchogue
631.289.9899

Mention this ad for 10% discount on purchase

From the Sound to the Sea...

We've been helping
choreograph the financial futures
of neighbors like you.



The Suffolk County National Bank

www.scnb.com

Equal Opportunity Lender

Member FDIC

A Note From the Producer

This year marks Gateway Playhouse's 50th anniversary and the start of a new millennium. We're proud of our history and excited about our future.

We opened our season with an old favorite that has a new twist — Pippin, the story of a young man's search for the meaning of his life, with a new ending and a new twist added by Stephen Schwartz, and dazzling Bob Fosse-style choreography.

Then The Best Little Whorehouse In Texas, a rollicking political satire recounting the rise and fall of the Chicken Ranch, took the stage. It was directed by Phillip George, who grew up near the real Chicken Ranch, and who has directed the Forbidden Broadway spoofs in Manhattan.

We celebrated Independence Day with the world premiere of Yankee Doodle Dandy. This new musical about the life of the legendary Long Islander, George M. Cohan, had audiences singing along to "Give My Regards to Broadway" and "You're a Grand Old Flag".

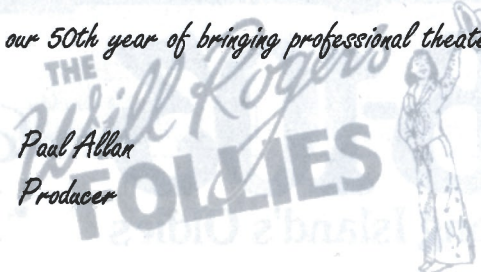
Today we will sweep you off to a tropical island with South Pacific, the classic Rodgers and Hammerstein love story. This show features some of the most beautiful music ever written for the stage, including "Some Enchanted Evening" and "Younger Than Springtime".

The ideal family musical Big is too big for Gateway Playhouse, so we are staging it in The Patchogue Theatre for the Performing Arts beginning August 9th. Based on the hit Tom Hanks movie, this story about a boy who gets his wish to become big, is funny, insightful, and touching. It will recapture the feeling of falling in love for the first time.

Finally, we bring The Will Rogers Follies, a combination of homespun wit, beautiful showgirls, burlesque, vaudeville, and a fabulous score encompassing jazz, country, blues, and rock. This production in Bellport kicks off our exciting National tour.

Thank you for supporting us in our 50th year of bringing professional theater to Long Island.

Paul Allan
Producer



Now THIS is an OLDIES station!

The Beatles

The Supremes

Elvis Presley

Creedence Clearwater Revival

Beach Boys

The Doors

Elton John

The Rascals

The Rolling Stones

Aretha Franklin

103.1 FM

B103 IS PROUD TO "BEE" PART OF ANOTHER GREAT GATEWAY SEASON

B-103
Long Island's Oldies

For the best
& most oldies!
103.1 FM

Open for Lunch & Dinner
Tuesday through Sunday

LOUIS XVI

Reservations
Recommended



Voted the No. 1 restaurant overall on LI, as well as No. 1 for Decor - devotees swear it could rival "the Palace of Versailles" - this "extravagant," "elegant" and "exquisite" "crown jewel" boasts "gorgeous views" of Great South Bay from its "beautiful setting on the water" in Patchogue; indulge in "extraordinary," "imaginative" New French cuisine "magnificently presented" by an "impeccable" staff; dip into the "kids' college fund" or "mortgage the house" if you must, but it's "worth every franc" for such an "incredible dining experience."

- Zagat Survey 2000 26 | 28 | 25 | \$57

600 South Ocean Avenue • Patchogue, 654-8970

THE HARBOR SIDE

"Incomparable Seafood Restaurant"

Open 7 Days a Week
at 11:30 a.m.

All Major Credit
Cards Accepted.

Complete Dinners
Everyday.



Highly Recommended:

Newsday
Daily News
NY Post

The Practical Gourmet

Complete Lunches*

Served Mon. - Sat.
11:30 a.m. - 3:30 p.m.
Starting at \$8.50

Complete Early Bird Specials*

Served Mon. - Fri. 3:30 p.m. - 6:45 p.m.
Sat. 3:30 p.m. - 6:30 p.m.
Sun. 11:30 a.m. - 4:00 p.m.
Starting at \$12.95

Sunday Specials

Includes: Soup or Salad,
Potato, Vegetable, Dessert & Coffee.
11:30 a.m. - 4:00 p.m.
Starting at \$9.95

*Above specials not available for groups of 15 or more or holidays. Prices subject to change.

Special Rates for Theatre Groups from 20 to 125. Call for more information.

503 E. Main Street, Patchogue, New York • Located on the corner of E. Main St. (27A) and Phyllis Dr.

(631) 654-9290

*If you're not completely
satisfied with the performance
of your bank,*

come into any North Fork Bank branch today
and find out about the **best-performing** bank in
America. The women and men in our branches
are what really makes North Fork Bank number
one... the most efficient, hardest working
bankers in the industry.

NFB

NORTH FORK BANK™

Norma Marx, VP/Branch Manager • Patchogue Branch
Corrinne Newman, VP/Branch Manager • Shirley Branch
Teri George, AVP/Branch Manager • Blue Point Branch
Marion Reinhardt, AVP/Branch Manager • Sayville Branch
Member FDIC

Fantastic Gardens

"Turn our fantastic quality into your fantastic garden"



*Holiday plants,
House plants, Annual,
Perennials and more*

67 Avery Avenue
Patchogue, NY 11772
475-7118

Budweiser

**On Tap Here
at Gateway**



Clare Rose

"Distributors of Fine Brewery Fresh Products"



"We're Patient People"

AMATO FAMILY CHIROPRACTIC
16-2 STATION ROAD • BELLPORT, NY 11713

631-286-2300

Infant, Child & Adult Care

Dr. Frank J. Amato

Taking Care of Cast and Crew at Gateway for Over 10 Years

Bellport CHOWDER HOUSE



An Eating and Drinking Tradition

FULL MENU

FULL BAR

Open Daily For Lunch and Dinner
Seven Days A Week

Sunday - Thursday till 11:00 p.m. Friday & Saturday till Midnight

**SPECIALIZING IN FRESH LOCAL SEAFOOD
AT AFFORDABLE PRICES**

*Before and After the Show You'll Want to Meet and Eat At
THE CHOWDER HOUSE*

TAKEOUT

CATERING

19 Bellport Lane • Bellport Village • 286-2343

Bravo



SEARLES
GRAPHICS
INC.

Quality Printing and Innovative Designs...
for all your graphic and printing needs.

56 Old Dock Road • Yaphank, N.Y. 11980 • 631-345-2202
searles@portjeff.net

Gateway Performing Arts

in association with

Gateway Playhouse

presents

JULIE DINGMAN

MICHAEL DANTUONO

in

Rodgers & Hammerstein's



Music by **RICHARD RODGERS**

Lyrics by **OSCAR HAMMERSTEIN II**

Book by **OSCAR HAMMERSTEIN II** and **JOSHUA LOGAN**

Adapted from the Pulitzer Prizewinning novel "Tales of the South Pacific" by James A. Michener

with

DON BOVINGLOH
TODD LAWSON

RICHARD P. GANG
STANLEY SCHORR

KATI KURODA
KRISTINE WOO

Produced by
PAUL ALLAN

Associate Producer
JEFF BELLANTE

General Manager
GALE EDWARDS

Casting Director
ROBIN JOY ALLAN

Company Manager
STANLEY SCHORR

Lighting Design
BRIAN LOESCH

Costume Design
KEVIN BAXTER
BRENT ERLANSON

Costume Coordinator
CHERYL RANDAL

Sound Design
GREG REIF

Set Design
TERRANT R. SMITH

Production Stage Manager
DAVID TAYLOR LONDON

Production Manager
KRISTIN HASSETT

Musical Direction by **PHYLLIS GESSLER**

Directed and Choreographed by
BOB DURKIN

SOUTH PACIFIC is presented through special arrangement with
The Rodgers & Hammerstein Theatre Library, 1065 Avenue of the Americas, Suite 2400, NY, NY 10018

CAST OF CHARACTERS

Ensign Nellie Forbush.....	JULIE DINGMAN
Emile de Becque.....	MICHAEL DANTUONO*
Ngana, his daughter.....	TERESA MARY CELENTANO
Jerome, his son.....	MARTIN MACARAEG
Henry, his native servant.....	CRAIG YOCHEM
Bloody Mary.....	KATI KURODA*
Liat, her daughter.....	KRISTINE WOO
Bloody Mary's Assistant.....	THOMAS PACIO
Luther Billis.....	RICHARD P. GANG*
Stewpot (Carpenter's Mate Second Class, George Watts).....	SAM VAN NESS
Professor.....	BRAD BASS
Lt. Joseph Cable, United States Marine Corps.....	TODD LAWSON*
Capt. George Brackett, United States Navy.....	DON BOVINGLOH*
Cmdr. William Harbison, United States Navy.....	STANLEY SCHORR*
Lt. Buzz Adams.....	DAVID TROUP
Radio Operator Bob McCaffrey, sailor.....	DON GARVERICK
Seabees, Sailors, Marines and Nurses.....	BRAD BASS, REBECCA BRANCATO, JAMES CORROTHERS, DON GARVERICK, BRIAN JOSEPH LAUGHLIN, ROBIN LEVINE, JENNIFER McCAMISH, HEATHER OLT, THOMAS PACIO, MICHELLE PRUIETT, CRAIG YOCHEM

UNDERSTUDIES/SWINGS

Understudies and swings never substitute for listed players unless a specific announcement is made at the time of the performance.

UNDERSTUDIES

Nellie Forbush.....	HEATHER OLT
Emile de Becque.....	STANLEY SCHORR*
Bloody Mary.....	ROBIN LEVINE
Liat.....	REBECCA BRANCATO
Luther Billis.....	DAVID TROUP
Lt. Cable.....	JAMES CORROTHERS
Capt. Brackett.....	STANLEY SCHORR*
Cmdr. Harbison.....	DON GARVERICK

MUSICIANS

Conductor/Keyboards.....	PHYLLIS GESSLER
Synthesizer.....	JOE O'KEEFE
Reeds.....	JENNIFER HALEY & MIKKI RYAN
Trumpet.....	DAN YEAGER
French Horn.....	SARA DELLA POSTA
Bass.....	JORDAN JANCZ
Percussion.....	JEFF FARRELO



*Actors employed in this production are members of Actors' Equity Association, the union of Professional Actors and Stage Managers in the United States.



The Director/Choreographer is a member of the Society of Stage Directors and Choreographers, Inc., an independent national labor union.



The Musicians employed in this production are members of the American Federation of Musicians.

SCENES AND MUSICAL NUMBERS

The action of the play takes place on two islands in the South Pacific during World War II. There is one week's lapse of time between the two Acts.

ACT ONE

"Overture".....	ORCHESTRA
Scene 1: The Terrace of Emile de Becque's Plantation Home	
"Dites-Moi".....	NGANA & JEROME
"A Cockeyed Optimist".....	NELLIE
"Twin Soliloquies".....	NELLIE & EMILE
"Some Enchanted Evening".....	EMILE
Reprise: "Dites-Moi".....	NGANA, JEROME & EMILE
Scene 2: Another Part of the Island	
"Bloody Mary".....	SAILORS, SEABEES & MARINES
Scene 3: The Edge of a Palm Grove Near the Beach	
"There's Nothin' Like a Dame".....	BILLIS, SAILORS, SEABEES, MARINES & BLOODY MARY
"Bali Ha'I".....	BLOODY MARY & BILLIS
Reprise: "Bali Ha'I".....	CABLE
Scene 4: The Company Street	
Scene 5: Inside the Island Commander's Office	
Scene 6: The Company Street	
Scene 7: The Beach	
"I'm Gonna Wash That Man Right Out-a My Hair".....	NELLIE & GIRLS
Reprise: "Some Enchanted Evening".....	EMILE & NELLIE
"I'm in Love With A Wonderful Guy".....	NELLIE & NURSES
Scene 8: The Company Street	
Scene 9: Inside the Island Commander's Office	
Scene 10: Another Part of the Island	
Reprise: "Bali Ha'I".....	GIRLS
Scene 11: Inside a Native Hut on Bali Ha'I	
"Younger Than Springtime".....	CABLE & GIRLS
Scene 12: Near the Beach on Bali Ha'I	
Scene 13: Emile's Terrace	
Reprise: "I'm in Love With A Wonderful Guy".....	NELLIE & EMILE
"This is How it Feels".....	NELLIE & EMILE
Reprise: "I'm Gonna Wash That Man Right Out-a My Hair".....	EMILE
"Finale Act I".....	EMILE

ACT TWO

"Entr'acte".....	ORCHESTRA
Scene 1: A Performance of "The Thanksgiving Follies"	
"Dance".....	NELLIE, NURSES & G.I.'s
Scene 2: Backstage at "The Thanksgiving Follies"	
"Happy Talk".....	BLOODY MARY, LIAT & CABLE
Scene 3: The Performance Resumes, as in Scene 1	
"Honey Bun".....	NELLIE, BILLIS & ENSEMBLE
Scene 4: Backstage, as in Scene 2	
"You've Got to be Carefully Taught".....	CABLE & EMILE
"This Nearly Was Mine".....	EMILE
Scene 5: Another Part of the Island	
Scene 6: The Radio Shack	
Scene 7: Another Part of the Island	
Scene 8: The Radio Shack	
Scene 9: The Company Street	
Scene 10: The Beach	
Reprise: "Some Enchanted Evening".....	NELLIE
Scene 11: The Company Street	
Scene 12: Emile's Terrace	
"Finale Ultimo".....	EMILE, NELLIE, NGANA & JEROME

The World Speaks in Over 1900 Different Languages, but sees in only one...

PHOTOGRAPHY, the universal language

MICHAELS CAMERA CENTER

18 East Main Street, Patchogue, New York

475-4173

Your Total Imaging Center
Full Digital Capabilities...
Prints from Any Source!



Swezey's... A Store On The Go!



Swezey's...a department store offering everything from the latest fashions for the family to furnishings for the home!



Service is key...including free giftwrapping...all the time! You'll find your favorite brand names & prices that will make you smile!



Fall 2000 look for the completion of Swezey's new home...a brand new store located at the west end of Main Street in Patchogue!



*1 Main St., Patchogue, 475-0280
Open Monday thru Friday 'til 9 pm;
Sat. 'til 6 pm & Sundays 11:30-5*

*Other Locations:
Main St., Riverhead;
3 Village Shopping Plaza, E. Setauket
Great So. Bay Shopping Ctr., W. Babylon;
School St., Glen Cove*



Michael Dantuono

Unlike a great many performers who "always wanted to be an actor", Michael Dantuono was a late bloomer. "I just fell into it," he explained, "I was 31 when I made the decision to come to New York to pursue a career." He had not been involved in theater in high school at all, went into the Navy, then began singing in small nightclubs in his native Rhode Island.

Once in New York he began auditioning and landing small parts. "I enjoyed the business and the process of rehearsal, working on characters. I really delight in performance, and I have been fortunate to have done well with it." Dantuono's first Broadway show was Caesar And Cleopatra starring Rex Harrison and Elizabeth Ashley. "I thought I had died and gone to heaven," he said. "I'd been in the business all of three years and here I was on stage with them." He also was in Zorba with Anthony Quinn. "To see people like Harrison and Quinn, and even people who were not well known but had been in the business for many years, I saw a real professional ethic," Dantuono said. "Both of them had enormous respect and felt obligation to the audience." Dantuono still admires Quinn for never missing a performance in a 20 month run, despite illness and accident. He's also worked with Kevin Kline, Christian Slater, Tom Berenger, and college pal JT Walsh.

Dantuono gives credit to the theater business for the way his three children turned out (his eldest son is studying to be a pediatrician,



the second has just graduated high school and his youngest is 15). "I have three absolutely terrific kids. At the time, you don't know if you are doing the right thing. But they had incredible opportunities, I took them to Europe for a year while I was on tour. I think they get along so well because while we traveled they were their only friends, and it bonded them to each other."

This is his first time playing the role of Emile de Becque. "I've been anxious to get a chance to do it, and it was nice that they offered it to me. Doing a role like this is a double-edged sword. It is a wonderful role with

LYONS FUEL OIL CO. INC.

24 Hr.
Service

est. 1934

Automatic
Delivery

23 Station Road • Bellport, New York 11713
Phone (631) 286-0395 • Fax (631) 286-0396

CANDY CRAVINGS

128 South Country Road
Bellport Village, NY 11713
(631) 286-6100



COLLINS & MAIN

Restaurant and Lounge



Sayville's Culinary Crossroads

"SUPERB"

- ZAGAT -

Piano Lounge/
Live Entertainment

Pre-Theater Pre Fixe

100 Old South Main Street
Sayville

(631) 563-0805

10% Off Dinner

(excluding beverages)

with presentation of show ticket
from Summer/Fall 2000 season



Michael Dantuono (con't)

wonderful songs. But because of that, it is very recognized and people have certain expectations. You want to make the role your own, but not so much that people ask 'what is this?'" Dantuono said.

42nd Street is probably Dantuono's favorite show. "I've done about 3,000 performances of it. For ten years I did it at least two weeks a year, sometimes on tour for a year. It is so much fun. There was never a night that I didn't see people leaving the theater trying to tap and sing the songs," he said. He understudied the lead and played it in Europe and on National Tour, then covered it on Broadway.

He has no desire to expand into directing or writing, or other aspects of the theater business. "I hope I work until I die. I have no plans to retire. It's not work to go to work, the work is getting another job. You don't stay in it unless you love it; there are a lot of dead spaces during which you have to do something else to earn a living. But it is a great place to be to get away from your problems. When that overture starts and the curtain goes up, your life takes place there."

LongIslandArt.Net

Because we are proud of where we live...

If you would like to advertise in this
Playbill, please contact Pam Young at



631-345-2202 or 516-459-1893

Theatre Etiquette

Listed below are some common sense tips to help make this a more pleasurable experience for you and your fellow theatregoers.

- Please arrive before the scheduled curtain time. This gives you time to park and get to your seats before the show begins. It also allows the show to begin on time. If you do arrive late, you will be asked to stand or sit in the rear of the theatre until there is an appropriate time for you to be seated in your correct seats.
- Please sit only in your assigned seats and remove any hats or accessories that may interfere with the vision of the person sitting behind you.
- Please refrain from talking during the show so as not to disturb your neighbors.
- Please open all candy wrappers before the show begins. The noise from the cellophane is extremely disturbing, not only to your neighbors, but also to the performers on stage.
- Please show the performers the courtesy and respect they deserve by remaining at your seats until the house lights come up. Trying to "beat the traffic" by leaving before the completion of the curtain call is rude and disturbing to those around you enjoying the final moments of the performance.

We sincerely hope this will help you and those around you have a more fulfilling theatre-going experience. Enjoy!

www.gudephotography.com



631-654-8093

Varney's

Restaurant

Fresh Seafood Daily
Marinated Steaks

Mon - Thur 11am - 9pm Fri & Sat 11am - 10pm
Closed Sunday

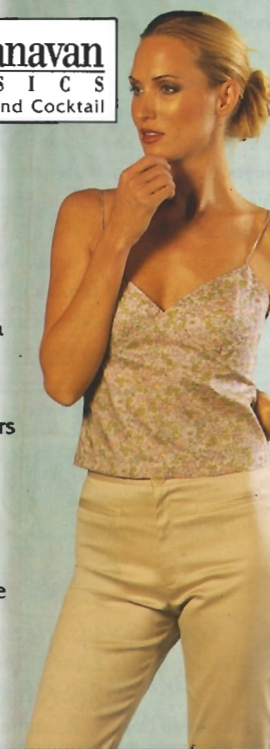
Located on Montauk Highway in Brookhaven
286-9569

Debra Canavan
CLASSICS
Casual Career and Cocktail

Michael stars
new man
for Joseph
theory
tommy bahama
jenne maag
nicole miller
brighton leathers
lilly pulitzer
shoshanna
A.B.S.
flax
and much more

53 Main Street
Sayville

631.563.9385



Something BIG is coming

Gateway Playhouse will present Big: The Musical, at Patchogue Theatre For The Performing Arts from August 9-26. Based on the hit Tom Hanks movie of the same name, it's the story of a 13 year old boy impatient with adolescence and anxious to be grown up. He makes a fateful wish, and the consequences make for a funny, charming, and poignant show.

But Big is not merely the story of a boy in a man's body. "It locks into a central myth," explained the show's author, John Weidman. "It is about the power of the wish, and the profound desire that people have to achieve what they want magically, rather than through the often painful and difficult process of working one's way toward it, and thereby earning it." Weidman felt that this desire for instant gratification is most keenly felt at the age of 13, but that the wishing impulses follows us all through adulthood. In adapting the show from the movie, Weidman shaped other characters' stories so they were impacted by the power of the wish as well. The strongest subtext in the show is how the boy-in-a-man's-body unlocks childhood's sense of wonder in adults who have forgotten how to have fun, from the yuppie overachiever who falls in love with him to the toy manufacturing CEO who can't create anything kids want to play with.

Casting a show like BIG offers several challenges. Gateway casts its shows through agent submissions and union calls in Manhattan, and normally casts its kids roles locally, due to housing limitations for parents etc... "We usually take advantage of our large Acting School Branch when casting kids," says Gateway's casting director Robin Joy Allan, "however in this particular production the role requirements for

the two lead boys are extremely specific. Billy needs to be or seem 12 or 13, have an incredibly unique personality, he needs to be a great singer/dancer/and be a skilled actor/comedian and Josh, not only must be all those as well, but he must have a wonderful vulnerability and honesty and resemble the actor portraying the older Josh in some way so that the audience will believe the circumstances." Because of this, more extensive auditions were required.

Costumes and choreography reflect the show's theme of the world seen through 13 year old eyes. The costumes point up the differences between boys and girls, children and adults, using color in the case of the children's costumes, and structure in the adults' restrictive "power suits". The choreographer of the Broadway version of Big, Tony-winning Susan Stroman, observed 13 year olds, and designed the choreography to capture their behavior through movement, game playing, and what she called "signalling" - communicating through gesture and body language.

Why do a Gateway musical in Patchogue? "Big is just too big for Bellport," said Paul Allan, Gateway's Producer. The set is from the national tour of the show, featuring two story "dollhouses" that offer glimpses inside the homes of Josh's neighborhood. Broadway set designer Robin Wagner was inspired by objects created by FAO Schwarz's store, Monopoly houses and hotels, and buildings in the Flatiron District. A giant floor keyboard is used, as in the movie, for the show's most dazzling dance number.

Big will play at Patchogue Theatre For The Performing Arts from August 9-26. Take the kids, before they get too big!

PAPA NICKS PIZZA

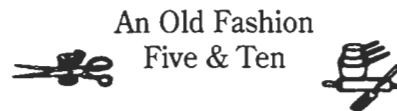


Gyros, Salads, Heros, Dinners
Daily Lunch Specials

286-6400

117C-South Country Road, Bellport Village, NY

THE VARIETY MART



An Old Fashion
Five & Ten

138 Main Street
Bellport, New York 11713

631-286-2210

GATEWAY

PERFORMING ARTS

Announces A Special Production Of...

GODSPELL



A mystical and imaginative story about a modern day Messiah who reaches out and sparks the interest of believers and disbelievers alike.

The music written by Stephen Schwartz, the composer of "Pippin," features the hits...

"Oh Bless the Lord, My Soul"

"Day By Day"

"Save the People"

"Turn Back, Oh Man"

A Musical Based On The Gospel
According To St. Matthew

**FEATURING SOME OF YOUR FAVORITE
GATEWAY ACTORS**

"GODSPELL rattles the soul like a tambourine and fills the theatre with its own sense of joy"

**FOR ONE WEEK ONLY
NOVEMBER 1-5**

THE
BANK OF
NEW
YORK
LONG ISLAND REGION

24-hour ATM

BELLPORT BANKING
OFFICE LOCATED AT:

32 Station Road
Bellport, New York 11713

Virginia Asero
Assistant Vice President

(631) 286-4200

Member FDIC 1986 The Bank of New York

BELLPORT PAINT & WALLPAPER
COMPLETE PAINT & WALLPAPER SUNDRIES

- PERSONALIZED SERVICE •
- COMPUTER COLOR MATCHING •



631-286-5850

145 South Country Rd.
Bellport, NY 11713

WHO'S WHO...

BRAD BASS (*Professor/Ensemble*) is very excited to join Gateway Performing Arts. Originally from Ringgold, VA, he moved to New York City to attend the American Musical and Dramatic Academy, from which he graduated in May. Brad would like to thank God for his many blessings and gifts and his friends and family (Mom & Dad) for their undying love and faith. Bubbe Love & Strawberries!

DON BOVINGLOH (*Capt. Brackett*) has a multi-faceted background that encompasses directing, writing, acting coach, and corporate spokesperson, as well as an experienced performer in film, television, and theatre. On stage Don has appeared in *THE ODD COUPLE*, *PAJAMA GAME*, *A FUNNY THING HAPPENED ON THE WAY TO THE FORUM*, *COMPANY*, *MYSTERY OF EDWIN DROOD*, *ON A CLEAR DAY YOU CAN SEE FOREVER*, *GREENWILLOW*, *LOVE LETTERS*, with Sandy Duncan. As a theatre director, his productions include *HELLO DOLLY*, *HOW TO SUCCEED IN BUSINESS WITHOUT REALLY TRYING*, *OTHER PEOPLES MONEY*, *MAME*, *THE GIN GAME*, *CHILD'S PLAY*, *CABARET* and most recently, *BABY* at the Pasadena Playhouse in Los Angeles. While living in Los Angeles, Don appeared in over 200 commercials, film, and television roles. Don Bovingloh was one of the original members and a teacher at the prestigious Groundling Theatre Company in Los Angeles

which continues to be a training base for many cast members of NBC's "Saturday Night Live." Some of his guest starring roles have been on "Columbo," "Days of Our Lives," "General Hospital," "Murder She Wrote," "Caroline in the City," "Murphy Brown," "The Hogan Family," "Veronica's Closet," "Family Law," "Just Shoot Me," and many more. He continues to meld his theatrical background with a passion for the arts and education through his Improv and Musical Theatre workshop called "POWERPLAY" which he facilitates for theatres around the country. At the Gateway Playhouse Don played the mayor and the senator in *WHOREHOUSE* and Mr. Erlanger in *YANKEE DOODLE DANDY*.

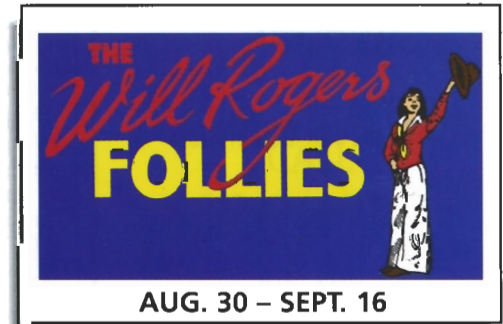
REBECCA BRANCATO (*Ensemble/Liat understudy*) recently returned to NYC from the European Tour of *WEST SIDE STORY* as Consuelo and the understudy for Anita. She was also in the European Tour of *SOPHISTICATED LADIES*. She is in both Orpheus and Foot & Fiddle Dance Companies in NYC. Graduated from Oklahoma City University with a Bachelor of Performing Arts Degree. She played Ginger in the last production of *WHOREHOUSE* and Josie in the premiere of *YANKEE DOODLE DANDY*. She also performed in various regional theaters as (Adelaide) *GUYS & DOLLS*, (Joan) *DAMES AT SEA* and (Hodel) *FIDDLER ON THE ROOF*. My love goes out to God, mom, dad, family, friends and Philippe.

Our 50th Anniversary Season continues with these exciting shows!



At the
**PATCHOGUE
THEATRE
FOR THE
PERFORMING
ARTS**

July 19 - August 5



CAVANAUGH'S

"Let's Have Fun"

Est. 1986

◆ New Smoke-Free Dining Room ◆

Serving Lunch Daily Starting at 11:30 • Dinner Served Every Night

Dining Room Open Sunday - Thursday Till 11 PM

Friday And Saturday Till 12 Midnight

DINING SPECIALS

Mondays - 2 For 1 Chicken Wings

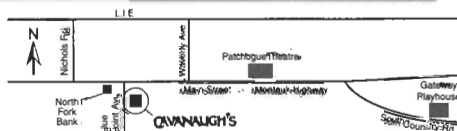
Tuesdays - 20 Oz. Porterhouse \$10.99 • Thursdays - Prime Rib \$11.99

Kitchen Open

Sunday - Thursday Till 12 Midnight

Friday and Saturday Till 2 AM

17 TVs - Quick Draw



255 Blue Point Avenue, Blue Point

631-363-2666

www.eveningout.com/cavpub • www.bluepoint.org

ON SALE NOW!

BOX OFFICE HOURS - 7 DAYS -
Monday - Tuesday 10:00 - 5:00 p.m. • Wednesday thru Saturday 11:00 - 9:30 p.m. • Sunday 12:30 - 7:00 p.m.

PHONE ORDERS 286-1133

(VISA & MC Only) No checks accepted on day of performance.

114 WEST MAIN STREET
PATCHOGUE, NY 11772
PHONE 475-4774
FAX 207-0267

TRIO
FINE FOOD & DRINK

KEVIN STAHL
CHEF/OWNER

PLEASE CALL FOR RESERVATIONS

10% OFF DINNER
WITH PRESENTATION OF A SHOW TICKET FROM
SUMMER/FALL 2000 SEASON

WHO'S WHO...

TERESA MARY CELENTANO (*Ngana*) is thrilled to be returning to Gateway's main stage. Last season she played Hendrika in *HERE'S LOVE*. She most recently appeared in the Gateway Acting School's production of *SWEENEY TODD*. Teresa is also enrolled in the Stage Door School of Dance, and plays the piano and violin. Special thanks to Robin and Lorrin, Mrs. Mesiano, and all her teachers at Gateway.

JAMES CORROTHERS (*Ensemble/Lt. Cable understudy*) is excited to be back at Gateway after performing the role of Gerald in their national tour of *ME AND MY GIRL*. Other national tours include *ANYTHING GOES* and a Florida Tour as Greg in *A CHORUS LINE*. James has performed in many theatres and cruise ships around the world and would like to thank his parents for all of their love and support.

MICHAEL DANTUONO (*Emile de Becque*) is happy to be making his debut at the Gateway Playhouse in his debut performance as *Emile de Becque*. He has just completed an 18 month national tour of *SUNSET BOULEVARD* which starred Petula Clark. Michael has appeared on Broadway with *ZORBA* starring Anthony Quinn, *THE THREE MUSKETEERS*, *CAN-CAN* with Zizi Jeanmaire, *CAESAR AND CLEOPATRA* starring Rex Harrison and *42nd STREET*. With *42nd STREET*, Dantuono also has toured throughout the U.S., Europe, Canada and Tokyo. He has also had a stint of touring with Mickey Rooney in *A FUNNY THING HAPPENED...FORUM*. There have also been numerous Off Broadway, Regional, Summer Stock and Dinner Theatre productions. However, his proudest productions (and sometimes "touring family") are his three children, Elizabeth, Matthew and Justin.

JULIE DINGMAN (*Nellie Forbush*), a native of Louisville, Kentucky, is happy to join Gateway for her first production of *SOUTH PACIFIC*, and wants to thank God, family, friends, and partner Drew for constant love and support. Other roles include Lago in *OTHELLO*, Irene in *CRAZY FOR YOU*, Katherine in *TAMING OF THE SHREW*, and Mrs. Molloy in *HELLO, DOLLY!* This show is dedicated to my daddy, Kendall.

RICHARD P. GANG (*Luther Billis*) comes to the Gateway Playhouse from the original Off Broadway production of *THE FANTASTICKS*, where he played The Boy's Father for the past fifteen months. Prior to joining this world renowned musical company, Mr. Gang played the cross-dressing lunatic, Lionel MacAuley, in Off Broadway's long running mystery, *PERFECT CRIME*. Mr. Gang is a graduate of Rutgers University, Professional Actor's Training Program where he received his MFA in Theatre Arts. Prior to attending school, he was with the California

WHO'S WHO...

Repertory Company where he won a Drama-Logue award for his portrayal of Merlin in *MERLIN (OR THE BARREN LAND)* by Tankred Dorst. He has also been seen locally in *MUCH ADO ABOUT NOTHING*, *TAMING OF THE SHREW*, *THE WINTER'S TALE*, *COMEDY OF ERRORS* and *TWO GENTLEMEN OF VERONA* at the New York Renaissance Festival. Regionally, he has played such diverse roles as Johnnie (*FRANKIE AND JOHNNIE IN THE CLAIR DE LUNE*), Fagin (*OLIVER!*) and Tevye (*FIDDLER ON THE ROOF*) and has toured throughout Europe as Lt. Shrank (*WEST SIDE STORY*). Mr. Gang had a lengthy career as an audiologist, specializing in learning disabilities, and currently teaches acting, voice and speech and theatre history at Rutgers University, the William Esper Studios in New York City and The Governor's School at The College of New Jersey.

DON GARVERICK (*Bob McCaffrey/Ensemble/Cmdr. Harbison understudy*) is thrilled to be a part of the summer season at Gateway. He comes to Gateway after a stint as Assistant Director & Choreographer of *AREA 51-THE MUSICAL* at the Sanford Meisner in NYC. Recent performing credits include Snoopy in *SNOOPY!!!* (Penguin Rep), Will Parker in *OKLAHOMA!*, Roger in *GREASE!*, The Bellhop in *LEND ME A TENOR* (Millbrook Playhouse), Andy Lee understudy in *42nd STREET* (Rockwell), King Simon of Legree in *THE KING & I*, and Carnival Boy in *CAROUSEL*; (Struthers Library). Thanks again and again and again to Mom, Dad and Danielle. Geranimo Scott!

KATI KURODA (*Bloody Mary*), born and raised in Hawaii, is a Senior Artist with Pan Asian Repertory Theatre and has directed and appeared in numerous productions for them, most recently *JOY LUCK CLUB*. In the spring of 2000 she toured her one woman show *SAKURA: THE BANDIT PRINCESS* for LaLuna productions. She was also seen in Long Wharf Theatre's production of *JOY LUCK CLUB*, Manhattan Theatre Club's *DAY STANDING ON ITS HEAD*, Roundabout Theatre's production of *RASHOMON*, the Guthrie's production of *THE SCREENS*, the Acting Company's *A MIDSUMMER NIGHT'S DREAM* and *THE COMEDY OF ERRORS* at NYSF's Shakespeare in the Park. She is thrilled to have the opportunity to work with Gateway Performing Arts. For Mutah.

BRIAN JOSEPH LAUGHLIN (*Ensemble*), Originally from Nebraska, Brian moved to NYC to,

211 Mastic Beach Rd.
Mastic Beach,
New York 11951
(631) 281-8744
Fax (631) 281-4651



Irish Coffee



Pub

at

**Bellport
Country Club**

always open to
the public.

The favorite for
pre- and post-show
dining.

Conveniently located between
Gateway Playhouse and
Patchogue Theater on
SOUTH COUNTRY ROAD, in
BELLPORT VILLAGE

Available for groups and
small parties.

FOR RESERVATIONS
CALL
286-4227

Also visit
Irish Coffee



Pub

on CARLETON AVENUE
in EAST ISLIP
277-0007

Cilantro's

*Eclectic New American Cuisine
Fine Dining and Cocktails*

- Pre Theater Dinner Specials -
- Live Jazz on Friday Nights -
- Prize Five Menu Always Available -

*Join Us Before or After
The Theater For A
Cocktail, Cappuccino or Dessert*

*154 Montauk Highway,
Blue Point, New York 11715*

Tel. 631-363-0500

Fax. 631-363-0506

www.menusonline.com

WHO'S WHO...

as his parents put it, "waste his life away and end up dead in an alley." Fortunately, he is still alive and wasting his time most recently at Gateway in PIPPIN, WHOREHOUSE & YANKEE DODDLE. Although his life before Gateway was meaningless & unfulfilled, he still managed to do WEST SIDE STORY (Riff), DAMN YANKEES (Bomber), MUSIC MAN, OUR TOWN (George), GLASS MENAGERIE (Tom) and a bunch of TV and Films that you've probably never heard of. Thanks to my family for all their love, support and most importantly their cash.

TODD LAWSON (*Lt. Cable*) was recently seen in THREE DAYS OF RAIN at The Human Race Theatre Company. Other credits include the Broadway production of SUMMER AND SMOKE with Mary McDonnell and Harry Hamlin, the National Tour of A FUNNY THING HAPPENED ON THE WAY TO THE FORUM as Hero opposite Rip Taylor. New York Workshop productions include THE WAGER (NYU), BOOK OF LUKE (Urban Rock Project), THE LAST GODDESS (Trilogy), as well as numerous Regional productions. Todd received his MFA from the University of Arizona and hails from Dayton, Ohio.

ROBIN LEVINE (*Ensemble/Bloody Mary understudy*) is very happy to be spending her summer at Gateway Playhouse. She is a recent graduate of the University of Illinois at Urbana-Champaign, where

WHO'S WHO...

she received a BFA in Dance. She has spent this past year dancing in YULETIDE CELEBRATION with the Indianapolis Symphony Orchestra and as a Gemini Twin in A FUNNY THING HAPPENED ON THE WAY TO THE FORUM. She recently portrayed Dawn in Gateway's production of BEST LITTLE WHOREHOUSE IN TEXAS as well as Alice Nolan in the premiere production of YANKEE DOODLE DANDY. Thank you to my family, and Paul for their constant support and love.

MARTY MACARAEG (*Jerome*) is happy to return to Gateway in SOUTH PACIFIC. He made his debut in THE KING & I in 1994. Marty (11) attends Holy Angels School in Patchogue where he plays soccer.

JENNIFER McCAMISH (*Ensemble*) is a graduate of the University of Texas in Austin with a Bachelor of Arts in dance. Her educational and professional career has stretched worldwide with scholarships and training in London, L.A., New Orleans, and New York. Jennifer has a diverse repertoire which includes professional performances of THE NUTCRACKER with the Delta Festival Ballet to soloist with the Delia Stewart Jazz company and Dance Repertory Theater. Other performances include WHOREHOUSE (Linda Lou), HERE'S LOVE (Dance Captain), OKLAHOMA, TAP GIRLS, LEGENDS IN CONCERT, and Gateway's most recent performances of YANKEE DOODLE DANDY. She also starred as Barbie for Mattel toys. Lots of love and thanks to my family.

HEATHER OLT (*Ensemble/Nellie Forbush understudy*) is thrilled to be spending her summer at Gateway. Recently, she portrayed Angel in Gateway's production of WHOREHOUSE. Prior to that, she galavanted around the country as Meg in BRIGADOON. Other favorites include: PIPPIN, YANKEE DOODLE DANDY, INTO THE WOODS (Cinderella), GODSPELL (Sonia), BIG RIVER, THE MOST HAPPY FELLA, THE MIKADO and Queen Vashti in the new musical QUEEN ESTHER. She received a BFA in Music Theatre from Illinois Wesleyan University. She would like to thank God for her blessings and family and friends for their endless love and support. Momma Jo, this one's for you!

THOMAS PACIO (*Ensemble*) is happy to be making his Gateway debut this season. A graduate of The Tisch School of the Arts at NYU, Tom holds a BFA in drama. Some past credits include A CHORUS LINE (Paul), GYPSY (Tulsa), WEST SIDE STORY (Pepe) and various new musical workshops. Special thanks to all friends, the gang at CRC, and especially to his family without whom he would be nothing.

MICHELLE PRUIETT (*Ensemble*) is very glad to be here for her first season at Gateway. She just portrayed Shy in Gateway's WHOREHOUSE. Recently

ACTING AND MUSICAL THEATRE TRAINING

*Classes now
enrolling!*

all levels of acting for all ages thru adult

GATEWAY ACTING SCHOOL

LEARN FROM THE PROFESSIONALS!

286-9014



BRICK HOUSE BREWERY & RESTAURANT



PLAYHOUSE DINNER SPECIALS

(Available Sunday-Thursday 4pm-10pm)

Opening Act:

Tossed Salad, Caesar Salad
or Soup

Main Stage:

Choice of:

Sesame Crusted Tuna Steak

Rigatoni ala Vodka

Sliced Marinated Steak

Apple Glazed Roast Loin of Pork

Homemade Meatloaf

Chicken Marsala

- with potatoes & vegetable -

Final Act:

Coffee or Tea Plus

Choice of: Chocolate Stout Cake,

Cheesecake or Carrot Cake

(All soups and desserts made here
on the premises)

Complete Dinner Price...
\$12.95

67 W. Main St., Patchogue
447-BEER

ALL MAJOR CREDIT CARDS

Visit us on the web at

www.brickhousebrewery.com

Coming soon
to our
sister theatre!

**PATCHOQUE
THEATRE**

FOR THE PERFORMING ARTS

71 E. Main St., Patchogue



**CHUCK
MANGIONE**
July 23, 7:00



**GLEN
CAMPBELL**
July 28, 7:30



**JOHN CAFFERTY
and the BEAVER
BROWN BAND**
with special guest
Sally Taylor
July 29, 8:00



**THE MARSHALL
TUCKER
BAND**
AUGUST 30, 8:00



**THE IRISH
DESCENDANTS**
SEPTEMBER 20,
8:00

All shows subject to availability and date and/or time change.
All tickets subject to handling and facilities charges.
Multi-Artist acts subject to lineup changes.

Presented by **GATEWAY** PERFORMING ARTS
TICKETS ON SALE IN THE LOBBY
OR PURCHASE ONLINE AT
www.4tixnow.com

CALL 286-1133 or 1-888-4TIXNOW

WHO'S WHO...

her credits include: A CHRISTMAS CAROL (Shawnee Playhouse), featured soloist in "PATTERNS: A MALBY AND SHIRE REVUE," and a season at New London Barn. "I'd like to thank all my loved one's for their support. Thank you!"

STANLEY SCHORR (*Cmdr. Harbison/Emile de Becque & Capt. Brackett understudies*) is proud to share the Gateway stage with this talented cast. Those of you who frequent Gateway productions may remember him from 1776 (Thomson), SHOW BOAT (Ensemble), MEET ME IN ST. LOUIS (Mr. Smith), or TITANIC (J.H. Rogers). Other regional credits include Mr. Snow in CAROUSEL, Col. Pickering in MY FAIR LADY, Capt. von Trapp in THE SOUND OF MUSIC and Phillip in PHANTOM. Stanley wishes to acknowledge the support of the staff, cast and crew (especially Robin). And as always thanks to Mom & Donna for ALWAYS being a phone call away.

DAVID TROUP (*Lt. Adams/Luther Billis understudy*) recent NY theatre credits include the part of Nick in WHO'S AFRAID OF VIRGINIA WOOLF directed by Arthur Penn, and Comet in THE EIGHT performed with the Adobe Rep. Film credits include *Amateur, Grace, Ambition* and *Kyd*, all four directed by Hal Hartley, and *Laws of Gravity* directed by Nick Gomez. A graduate of SUNY Purchase, David went to Northport High School on Long Island. He is a lifetime member of the Actors Studio.

SAM VAN NESS (*Stewpot*) is really glad to be here at Gateway for SOUTH PACIFIC. He recently returned from 2 years in Hamburg, Germany where he performed Raoul in Andrew Lloyd Webber's THE PHANTOM OF THE OPERA. Sam sends love to those closest to him for their support, especially his parents, Scott, Dave, Joe, Melanie and Melinda.

KRISTINE WOO (*Liat*) began acting as a student at the Gateway Playhouse Acting School. She has since performed in productions of SPOON RIVER ANTHOLOGY, THE PRIME OF MISS JEAN BRODIE, THE PARRIFIN TOUCH, and THE WOMEN. Currently residing in Los Angeles, CA, Kristine is very happy to be back at Gateway Playhouse.

CRAIG YOCHEM (*Henry/Ensemble*) hails all the way from the great state of Colorado. Craig is thrilled to be a part of the multi-talented cast at Gateway Playhouse. Even before graduation from Towson State University with a BFA in Dance Performance/Choreography Craig could be seen on the stages of King's Dominion, Opryland U.S.A. and Tokyo Disneyland. He has also toured extensively throughout Europe in musical revues until finally landing in Paris at the world famous Lido de Paris. Craig's love of seeing the world has also led him to Seoul, South Korea dancing the lead in BRAVO and

WHO'S WHO...

on a tour of Australia in an Irish Step Dancing Show. Musical theatre shows include: A CHORUS LINE, WEST SIDE STORY and CRAZY FOR YOU. Television credits include: the "MTV Video Music Awards," "Latin Legends Award Show" and an upcoming HBO Dance Documentary. Craig would like to send a special thanks to Todd for his continued support.

PAUL ALLAN (*Producer*) is proud to be presenting the 50th season of live theatre here at the Gateway Playhouse. Having grown up in and around the theatre, Paul has been able to watch Gateway "grow up" over the years and expand into many different areas - including Touring productions produced Nationally and Internationally, and a successful set rental company. Paul currently splits his time between the season here at Gateway Playhouse, and the summer concert series at the Patchogue Theatre For The Performing Arts. Some of Paul's favorite projects to date include TOMMY, PHANTOM, and ONCE ON THIS ISLAND on this stage - and TITANIC at the Patchogue Theatre, which was the first live musical presentation on that stage since 1934. Paul is grateful for the support of his family and staff who are a continuing means of encouragement during challenging times.

BOB DURKIN (*Director-Choreographer*) recently directed UNFORGETTABLE (the Nat King Cole story) which had its US premiere at Capital Repertory Company in Albany, NY. He has been represented off-Broadway and in stock, regional, national and international touring companies. Nationally and internationally, the list of touring shows he has directed and choreographed include DREAMGIRLS, THE GOODBYE GIRL, HELLO, DOLLY!, THEY'RE PLAYING OUR SONG, ANYTHING GOES, AIN'T MISBEHAVIN', PURLIE, LITTLE SHOP OF HORRORS, ONE MO' TIME, NUNSENSE II, and SEVEN BRIDES FOR SEVEN BROTHERS. He was the recipient of the 1997 Connecticut Critic's Circle Award for outstanding Choreography of a musical for his work on the national tour of SEVEN BRIDES FOR SEVEN BROTHERS. In 1995 he was awarded Best Choreography for his work on PETER PAN by the Pittsburgh Post Gazette. His work is seen regularly at regional theater's like the West Virginia Public Theater, Vermont Stage Company, and Pittsburgh's Byham Theater. Bob served as Associate Choreographer to Tommy Tune on the pre-Broadway workshop of Irving Berlin's EASTER PARADE starring Tommy Tune and Sandy Duncan both in Sydney, Australia, and in New York City. He is pleased to return to Gateway Playhouse and to be working with such a wonderful cast as this one.

Hine Grove Inn
On The Swan River



est. 1910

Open Weekdays
11:30 A.M.
Saturday
11:30 A.M.
Sunday
12:00 P.M.

Waterside Patio
Dining on the
Swan River

**EARLY BIRD
SPECIALS**

Monday thru Saturday, 3 p.m. to 6 p.m.,
Sunday 12 p.m. to 5 p.m.

DINNER

served 3 p.m. to 10 p.m.
Weekdays & Saturdays
Sundays 12 p.m. to 9 p.m.

LUNCH

Monday thru Saturday,
11:30 a.m. to 3 p.m.

Chapel Ave. & First Street • East Patchogue, NY
475-9843

OPEN WEEKDAYS 11:30 AM • CLOSED TUES. • SAT. 11:30 AM • SUNDAY 12 PM

Directions: LIE to Exit 64, Route 112 South to Montauk Hwy. (27A). Make a left (East) on Montauk Highway to fork in road. Take right side of fork then immediate right onto Chapel Ave.

OPEN 6 DAYS A WEEK

CLOSED TUESDAY

(631) 475-1790-1791
Fax (631) 475-1867

Emergency Boarding
Service
Call 289-1524

**PATCHOGUE
PLATE GLASS**
CO. INC.

GLASS-MIRRORS-PLEXIGLASS-STORE FRONTS
AUTO GLASS-INSURANCE CLAIMS

RON HENTHORNE
Manager

7 Railroad Ave.
Patchogue, NY 11772



*Pub Fare That Will
Make Your
Tongue Smile*

Relax After The Show
Kitchen Open 11AM to
11PM. Bar 'til 1AM
Closed Sun.

Just steps from Theater parking
70 North Ocean Avenue
Patchogue

(631) 289-1900

THE NUTCRACKER

presented by

OVATIONS DANCE ACADEMY

in conjunction with

The Brookhaven Youth Orchestra

Dec. 2 and 3,

1:00 p.m. and 7:30 p.m.

at *The Patchogue Theatre for the
Performing Arts*

For Ticket Info Call
Ovations Dance Academy

Director: Orlando Peña
631-218-0315

WHO'S WHO...

ROBIN JOY ALLAN (*Casting Director*) has been immersed in theater her whole life, performing, musical directing, teaching, directing, producing and most enjoyably, observing many, many great actors and directors work. In 1985 she began her casting career in New York and then Los Angeles, where she had the pleasure of working with Ron Howard, Rob Reiner, Jerry Zucker and Chris Carter (pre-X-Files!) on several projects as Associate and Casting Director, including: PARENTHOOD, WHEN HARRY MET SALLY and GHOST. She led the search for unknowns, discovering Balthazar Getty for the remake of LORD OF THE FLIES, and cast Leonardo DiCaprio in his first TV series-regular role in 1989's PARENTHOOD. She is dedicated to the educational development of young actors and, along with her husband Lorrin, has founded Gateway Acting School for that purpose. Her greatest accomplishment to date is her beautiful daughter, Hayley Lynn.

PHYLLIS GESSLER (*Musical Director*) is back after a summer away from Gateway, during which time she musical directed LITTLE SHOP OF HORRORS and FIDDLER at the Oklahoma City Lyric Theatre. During the school year, she is teaching musical the-

WHO'S WHO...

atre, voice and keyboard at the Pinellas County Center for the Arts in St. Petersburg, Florida. Gateway audiences may remember her from over 20 shows here including favorites GREASE, MAN OF LA MANCHA, EVITA, WEST SIDE STORY, GROUCHO, and BUDDY. She is delighted to be working again with director, Bob Durkin and had to return to go to Dizzkneeland.

DAVID TAYLOR LONDON (*Production Stage Manager*) in his first season at Gateway comes to us from South Florida, where he works both as a Stage Manager and as a Director. He is delighted to be on the Island and escaping the Florida summer heat.

BRIAN LOESCH (*Lighting Designer*) has been involved with theatrical lighting for over eleven years. He has worked in a variety of theatre houses, ranging from off-Broadway productions, and collegiate atmospheres, to community theatres and a national tour. This is Brian's third season as part of the Gateway family, and second running season as Master Electrician. We are proud to say that South Pacific will be Brian's debut as mainstage Lighting Designer for Gateway Theatre.

Morgan's Beach House Restaurant



Lunch & Dinner - Indoor/Outdoor
363 Grove Ave. Patchogue 631-758-3524
(closed Mondays)

Swan Bakery

"Serving the Community Since 1946"

Official Baker to the Gateway Playhouse

Guy J. Gagliano • Robert E. Roode

15 South Country Road
East Patchogue, NY 11772
Tel. (631) 475-9626



Dinner Nightly 5 P.M.
(631) 567-0033
Pamela Raymond
Richard Stafford
199 Middle Road
Sayville, NY 11782

OSPREY'S DOMINION



Enjoy some here Tonight!

VISIT THE WINERY

Osprey's Dominion Vineyards, Ltd.
44075 Main Road, Peconic, NY 11958
(631) 765-6188 • Fax: (631) 765-1903

VOLUNTEERS NEEDED

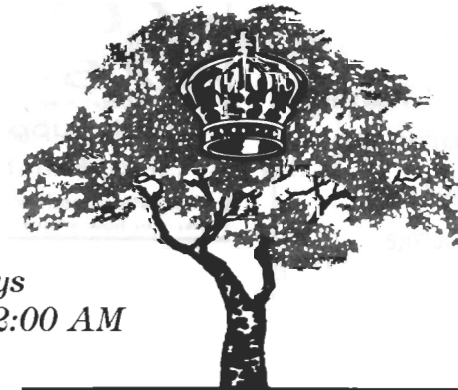
Interested in being an usher or volunteer technician?

Call **286-0555**

Before or After The Show Late Night Dinner • Dessert and Coffee

All Baking
Done On
Premises

Open 7 Days
6:00 AM - 2:00 AM



Breakfast,
Lunch and
Dinner

Daily Specials

ROYAL OAK

Diner - Restaurant

Station Road and Sunrise Highway - Bellport, New York 11713

TEL. (631) 286-5757

Bay Street Theatre

"one of the country's pre-eminent regional theatres"
- CBS News Sunday Morning



New and Classic Plays & Musicals,
Cabaret, Chamber Music, Concerts,
Play Readings, Special Events,
and Theatre in the Schools.



For 2000 Season Brochure or Ticket Information,
Please Call: 725-9500

Save the date! Summer Gala Benefit Bash

With guest auctioneers **Julie Andrews, Alex Baldwin, and Chevy Chase**
Saturday, July 8 Call 725-0818

ORDER BY PHONE **(631)725-9500** ON THE LONG WHARF, SAG HARBOR

COLDWELL BANKER

JOHN ASHLINE

Licensed Associate Real Estate Broker

(631) 289-1400 BUS., (631) 654-5001 FAX
ashline@coldwellbanker.com E-MAIL

BELLBROOK REALTY, INC.
66 MEDFORD AVENUE
PATCHOGUE, NY 11772

Each Office is Independently Owned and Operated



CALL FOR SUMMER/FALL
REGISTRATION

PRE-SCHOOL THRU ADULTS • FAMILY DISCOUNTS

654-8858

25 PATCHOGUE-YAPHANK ROAD • EAST PATCHOGUE

Our students have performed at the
Gateway Playhouse Mainstage and Children's Theatre

JIM'S DELICATESSEN

2478 Montauk Highway
Brookhaven, New York
(Located next to the firehouse)

286-2333

Original Home of
the Buy a Pound,
Get a Pound Free Salad

Hot and Cold Catering,
Breakfast and Hot Lunch,
Specialty Sandwiches,
Homemade Soups and
Salads, Wraps

OPEN DAILY 5AM - 10PM

Swezey

FUEL CO., INC. - EST. 1919

**Suffolk's Largest Family
Owned Oil Company**

- Automatic Oil Delivery Service
- 24-Hour Emergency Service
- Budget Plans That Pay You Interest
- Expert Installation Of Boilers,
Burners, Hot Water Heaters &
Pool Heaters



475-0270

51 RIDER AVE., PATCHOGUE

Ruland

Funeral Home, Inc.

OUR REPUTATION FOR 'EXCELLENCE' HAS ENDURED SINCE 1856

475-0098

500 North Ocean Avenue; Patchogue, New York 11772

**Proudly Supporting the Arts
that Enrich Our Lives**

A FAMILY-OWNED Funeral Home - The Romeo Family of Patchogue
Discover how affordable 'Excellence' can be!

Mayer's

FLOWER COTTAGE

Family Owned Since 1929

**"We Express Your Feelings -
Beautifully"**

400 Medford Ave., Patchogue
(One Block North of Sunrise Highway)

(631) 475-1779



COLEMAN

CESSPOOL SERVICE, INC.

ART COLEMAN

475-1733 • 878-2010

**Family Owned and Operated
For Over 50 Years**

1 Chapel Avenue, East Patchogue, New York 11772

- Dedicated to Honest & Reliable Service •
- Precast Cesspools Installed •
- Portable Toilet Rentals •

ROE AGENCY INC.

OVER A CENTURY OF COMMITMENT
Since 1898

**PERSONAL AND
COMMERCIAL INSURANCE
PROPERTY
CASUALTY
LIFE
HEALTH
FINANCIAL SERVICES**

Walter A. Roe, President
Patricia A. Mankowski, VP and Secretary
Virginia Flynn, VP and Treasurer

125 EAST MAIN STREET
PATCHOGUE, NY 11772-0970
475-4000
FAX 475-7648
E-MAIL: roe@nais.com



Old Inlet Inn



Fine Dining

Dinners from 5:00 p.m.
Sunday Brunch 12 - 3:00 p.m.
Sunday Dinner 3 - 9:00 p.m.
Closed Mondays

**Ten Minutes From The
Beautifully Renovated
Patchogue Theater**

Show Tune Sing-A-Longs on
Fri. with Jim Ahrend and others
at the Piano 8:30 p.m. - 12:30 a.m.

Walter A. Roe, Prop. Erik C.W. Brown, Chef

**108 So. Country Road, Bellport
286-2650**

**10% Entree Discount
with Theatre Tickets**

GATEWAY PLAYHOUSE STAFF

Executive Producers	Ruth and Stan Allan
Producer	Paul Allan
Associate Producer	Jeff Bellante
General Manager	Gale Edwards
Casting Director	Robin Joy Allan
Company Manager	Stanley Schorr
Director/Choreographer	Bob Durkin
Musical Director	Phyllis Gessler
Production Manager	Kristin Hassett
Production Stage Manager	David Taylor London
Assistant Stage Manager	Erin Kraus
Scenic Designer	Terrant R. Smith
Lighting Designer	Brian Loesch
Sound Designer	Greg Reif
Costume Designer	Kevin Baxter & Brent Erlanson
Technical Director	Justin Testo
Master Electrician	Brian Loesch
Assistant Master Electrician	Genevieve Fanelli
Costume Coordinator	Cheryl Randal
Wardrobe Assistant	Clarissa Smith
Master Carpenter	Mark Frederick
Master Rigger	A.D. Garrett
Properties Mistress	Amy Wynn Pastor
Master Scenic Painter	Kim Lecker
Music Contractor	Dan Yeager
Carpenter	Nate Hillard
Interns	Courtney Alphin, Sacha Ferguson, Hillary Matlin
Box Office Manager	Nancy Kana
House Manager	Kelly Adee, Laurie Parr, Elizabeth Bender
Group Sales	Nadine Hazard
Box Office Staff	Emily Ahrend, Jessica Casamassa, Danielle Frasca, Jodi Grega, Gladys Hawkins, Scott Maguill, Sarah Jean Miller, Greg Monteith, Pam Stewart, Brianne Tyson
Administrative Assistant	Janet Trahan
House Staff	Gayle Allan, Doug Bernhard, Bob Coupe, Cathy Esposito, Nick Harding, Don Harrison, Earlene Johnson, Joe Kelly, Matt Mordente, Robert Nofi, Theresa Pavanello
Maintenance/Landscaping Supervisor	Bob Nofi
Concession Manager/Production Photographer	Mil Kana
Sound Consultant	Dominic Sack
Publicist	Linda Unger
General Counsel	Ann L. Nowak & Associates

PATCHOGUE THEATRE for the PERFORMING ARTS STAFF

Managing Director	Tim Wilkins
Technical Director	Brodie Steele
Master Electrician	Chris White
Sound Engineer	Mark Clark

Gateway Playhouse would like to thank our volunteer staff for their dedication and support. It is much appreciated.

Al Pollog - Head Usher

Ushers - Olga Belz, June Budd, Martha DeRuiter, Mary Fox, Irene Fritz, Marian Harrison, Howard Lehman, Marie Rachek, Pat Siegel, Rita Wehner, Patricia Yurdiga

IF YOU WOULD LIKE TO JOIN OUR VOLUNTEER STAFF CALL 286-0555

WARNING - The photographing or sound recording of any performance is strictly prohibited.

Gateway Playhouse offers a wireless sound enhancement system for the hearing impaired. Inquire at the box office for more information.

FIRE NOTICE The exit indicated by a red light and sign nearest to the seat you occupy, is the shortest route to the outside. In the event of fire or other emergency, please do NOT run. WALK to that Exit. However, under normal circumstances, when leaving the Theatre, use the center rear exits. SMOKING is prohibited in the BUILDING, as required by the Suffolk County NO SMOKING Ordinance. Smoking in any area designated "No Smoking" renders the offenders subject to a fine, or imprisonment, or both.



Casual Family Dining

**Come Join us Before
or After the Show**

Senior Menu Always Available
Children's Menu Only \$2.99

7 a.m. - 10 p.m. 7 day/week
240 East Main Street,

Patchogue
654-3641



OF PATCHOGUE



631-475-1047
14 South Ocean Ave.
Patchogue
Four Stores
South of Moin St.

**Quality Footwear for the Entire
Family Since 1927**

- Helpful, Friendly Service
- Areas Largest Selection of Sizes & Widths AA-EEEE

Rockport, Easy Spirit, Florsheim, New Balance, Stride Rite, Selby, Teva, Timberland, Skechers, Munro, Dexter, Keds, Reebok, Dyeables, Topsider, Soff Spots, Clarks, etc.

10% OFF any purchase
with ad only

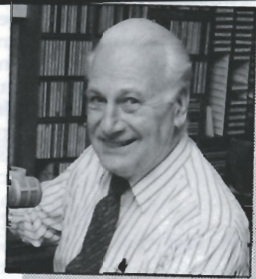
Excludes Easy Spirit, Dr. Martens & other offers. Expires 12/31/00



Bryan McGowan, 5:30 - 10:00 a.m.

Join Your **wlim**^{STEREO} Family

Monday - Friday



Jack Ellsworth,
"Memories in Melody"
10:00 a.m. - Noon



Bob Stern, Noon - 3:00 p.m.
1-2 BDWY. Hollywood Show

- Big Bands
- Popular Standards
- Local & Community News
- Daily Prizes

GLENN MILLER

FRANK SINATRA

ROSEMARY CLOONEY

BARBRA STREISAND

NAT KING COLE

DORIS DAY

BENNY GOODMAN

TONY BENNETT

BING CROSBY

wlim^{STEREO}

1580 AM

Long Island Music

Children's Theatre

Live Musical shows! Friday and Saturday mornings at 10:30 a.m.

All Seats \$7.50

Snow White and the Seven Dwarfs



JULY 7,8,14,15,21,22

FAIRYTALE TRIO



Three Classic Fairytales -
Little Red Riding Hood,
The Three Little Pigs,
Hansel and Gretel
JULY 28, 29, AUGUST 4,5,11,12

TOY FACTORY

AUGUST 18, 19, 25, 26,
SEPTEMBER 1, 2

Advance sale general admission tickets for all shows go on sale beginning May 18th. Phone orders are accepted. Remaining tickets will be sold at the door, the morning of the show. *Sorry, Children ages 2 and older only - No Infants Please. Shows subject to change without notice.*



DO YOU RECEIVE OUR FREE BROCHURE EACH YEAR?

If not, fill out this form and leave it in the box office.

(Please Print)

Name _____

Address _____