



Bringing New York Closer To The World.

American loves New York. And we show it every day with over 200 flights from six tri-state area airports to nearly 260 cities in 40 countries worldwide. For more information call your Travel Agent or American at 1-800-433-7300, or visit us on the web at www.americanair.com

American Airlines
American Eagle

LA GUARDIA • JFK • NEWARK • LONG ISLAND MACARTHUR • WHITE PLAINS • NEWBURGH STEWART
American Airlines and American Eagle are registered trademarks of American Airlines, Inc. American Eagle is American's regional airline associate.

Gateway

PLAYHOUSE

50th Anniversary Season

Pippin

The Best Little Whorehouse In Texas

Big

Yankee Doodle Dandy

South Pacific

The Will Rogers Follies

GATEWAY
PERFORMING ARTS

summer
2000 playbill

*For peace of mind...
Take the time*



MAMMOGRAPHY SAVES LIVES

Mammography facility with full ACR accreditation & FDA certification

Brookhaven
Women's Health Services

285 Sills Road • Building 5-6 • Suite E • Patchogue, New York 11772

For more information or to schedule an appointment for
Mammography, Ultrasound or Bone Density Testing
Call (631) 654-7700 or 654-7114

Marilyn Lerner, M.D., D.A.B.R. ~ Ronald S. Hames, M.D., D.A.B.R.
Ira J. Langer, M.D., D.A.B.R. ~ Daniel F. Settle, M.D., D.A.B.R.



TREASURES OF YEARS GONE BY

The warmth of gold and the artistry of radiant platinum... We invite you to come in and select from our collection of new and period treasures. Specializing in design and remounts.

Turn your unwanted jewelry into cash.

W^{m.} J. O'Neill

Sales Exchange Co., Inc.
Jewelers and Collateral Loanbrokers
One East Main Street • Patchogue
631.289.9899

Mention this ad for 10% discount on purchase

From the Sound to the Sea...

We've been helping
choreograph the financial futures
of neighbors like you.

The Suffolk County National Bank

Equal Opportunity Lender

www.scnb.com

Member FDIC

A Note From the Producer

Dear Patrons,

As we come to the end of our 50th Anniversary Season, I wanted to take this opportunity to thank you for your patronage over the years. We at Gateway Playhouse have enjoyed providing a half century of professional theatre and look forward to another 50 years. During the upcoming fall and holiday season keep an eye out for some exciting shows coming to our sister theatre, the Patchogue Theatre for the Performing Arts. A partial schedule is inclosed in this playbill and a full schedule is available at the box office.

Also, in today's playbill you will once again have the option to help inform us of what type of show you would like to see next year. If you haven't yet, I hope you will take a few moments to fill out this form so that we can learn what you, our valued patrons, enjoy.

Thank you again for your continued support of the Arts. Now please enjoy *The Will Rogers Follies*.

Paul Allen
Producer

Now THIS is an OLDIES station!

The Beatles

The Supremes

Elvis Presley

Credence Clearwater Revival

Beach Boys

The Doors

Elton John

The Rascals

The Rolling Stones

Aretha Franklin

103.1 FM

B103 IS PROUD TO "BEE" PART OF ANOTHER GREAT GATEWAY SEASON

B-103
Long Island's Oldies

For the best
& most oldies!
103.1 FM

Open for Lunch & Dinner
Tuesday through Sunday



Reservations
Recommended



Voted the No. 1 restaurant overall on LI, as well as No. 1 for Decor – devotees swear it could rival “the Palace of Versailles” – this “extravagant”, “elegant” and “exquisite” “crown jewel” boasts “gorgeous views” of Great South Bay from its “beautiful setting on the water” in Patchogue; indulge in “extraordinary”, “imaginative” New French cuisine “magnificently presented” by an “impeccable” staff; dip into the “kids’ college fund” or “mortgage the house” if you must, but it’s “worth every franc” for such an “incredible dining experience.”

- Zagat Survey 2000 26| 28| 25| \$57

600 South Ocean Avenue • Patchogue, 654-8970

THE HARBOR SIDE

"Incomparable Seafood Restaurant"

Open 7 Days a Week
at 11:30 a.m.

All Major Credit
Cards Accepted.

Complete Dinners
Everyday.



Highly Recommended:

Newsday

Daily News

NY Post

The Practical Gourmet

Complete Lunches*

Served Mon.-Sat.
11:30 a.m. - 3:30 p.m.
Starting at \$8.50

Complete Early Bird Specials*

Served Mon. - Fri. 3:30 p.m. - 5:45 p.m.
Sat. 3:30 p.m. - 5:30 p.m.
Sun. 11:30 a.m. - 4:00 p.m.
Starting at \$12.95

Sunday Specials

Includes: Soup or Salad,
Potato, Vegetable, Dessert & Coffee.
11:30 a.m. - 4:00 p.m.
Starting at \$9.95

*Above specials not available for groups of 15 or more or holidays. Prices subject to change.

Special Rates for Theatre Groups from 20 to 125. Call for more information.

503 E. Main Street, Patchogue, New York • Located on the corner of E. Main St. (27A) and Phyllis Dr.

(631) 654-9290

*If you're not completely
satisfied with the performance
of your bank,*

come into any North Fork Bank branch today
and find out about the best-performing bank in
America. The women and men in our branches
are what really makes North Fork Bank number
one... the most efficient, hardest working
bankers in the industry.

NFB

NORTH FORK BANK™

Norma Marx, VP/Branch Manager • Patchogue Branch
Corrinne Newman, VP/Branch Manager • Shirley Branch
Teri George, AVP/Branch Manager • Blue Point Branch
Marion Reinhardt, AVP/Branch Manager • Sayville Branch
Member FDIC

Fantastic Gardens

"Turn our fantastic quality into your fantastic garden"



*Holiday plants,
House plants, Annual,
Perennials and more*

67 Avery Avenue
Patchogue, NY 11772
475-7118

Budweiser

**On Tap Here
at Gateway**



Clare Rose

"Distributors of Fine Brewery Fresh Products"



"We're Patient People"

AMATO FAMILY CHIROPRACTIC
16-2 STATION ROAD • BELLPORT, NY 11713

631-286-2300

Infant, Child & Adult Care

Dr. Frank J. Amato

Taking Care of Cast and Crew at Gateway for Over 10 Years

Bellport CHOWDER HOUSE



An Eating and Drinking Tradition

FULL MENU

FULL BAR

Open Daily For Lunch and Dinner
Seven Days A Week

Sunday - Thursday till 11:00 p.m. Friday & Saturday till Midnight

**SPECIALIZING IN FRESH LOCAL SEAFOOD
AT AFFORDABLE PRICES**

*Before and After the Show You'll Want to Meet and Eat At
THE CHOWDER HOUSE*

TAKEOUT

CATERING

19 Bellport Lane • Bellport Village • 286-2343

Bravo



SEARLES
GRAPHICS
INC.

Quality Printing and Innovative Designs...
for all your graphic and printing needs.

56 Old Dock Road • Yaphank, N.Y. 11980 • 631-345-2202
searles@portjeff.net

Gateway Performing Arts

in association with

Gateway Playhouse

presents

DAVID M. LUTKEN

in

THE
Will Rogers
FOLLIES
A Life In Revue



Book by **PETER STONE**

Music Composed and Arranged by **CY COLEMAN**

Lyrics by **BETTY COMDEN** and **ADOLPH GREEN**

with

LAURIE GAMACHE **DANA LYNN MAURO**

also starring **GEORGE RIDDLE** as Clem

Original New York Production Directed and Choreographed by *Tommy Tune*

Inspired by the words of Will and Betty Rogers

Cherokee translations provided for this production by **LAKOTA LONGWALKER**

Originally Produced on Broadway by Pierre Cossette, Martin Richards, Sam Crothers,

James M. Nederlander, Stewart F. Lane and Max Weitzenhofer

in association with Japan Satellite Broadcasting, Inc.

Producer

PAUL ALLAN

Associate Producer

JEFF BELLANTE

General Manager

GALE EDWARDS

Casting Director

ROBIN JOY ALLAN

Company Manager

STANLEY SCHORR

Lighting Design
MARCIA MADEIRA

Costumes Produced by
Costume World Int'l
KIM WYCK, Designer

Costume Coordinator
CHERYL RANDAL

Sound Design
GREG REIF

Associate Choreographer
ANN COOLEY

Production Stage Manager
EILEEN F. HAGGERTY

Musical Direction by **WILLIAM FOSTER McDANIEL**

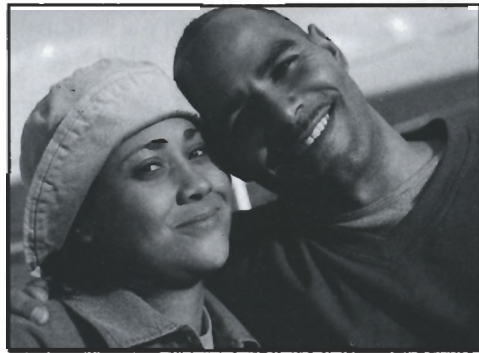
Director/Choreographer
D.J. SALISBURY

Presented by arrangement with Tams-Witmark Music Library, Inc., 560 Lexington Ave., NY, NY 10022

Swezey's... A Store On The Go!



Swezey's...a department store offering everything from the latest fashions for the family to furnishings for the home!



Service is key...including free giftwrapping...all the time! You'll find your favorite brand names & prices that will make you smile!



Fall 2000 look for the completion of Swezey's new home...a brand new store located at the west end of Main Street in Patchogue!



*1 Main St., Patchogue, 475-0280
Open Monday thru Friday 'til 9 pm;
Sat. 'til 6 pm & Sundays 11:30-5*

*Other Locations:
Main St., Riverhead;
3 Village Shopping Plaza, E. Setauket
Great So. Bay Shopping Ctr., W. Babylon;
School St., Glen Cove*

Theater for Kids

A talk with Gateway Acting School Director, Robin Allan Gillman

As the director of Gateway Acting School will tell you, a statement repeatedly uttered by moms and dads inquiring about classes for their child is, "My daughter/son is such a ham." Another frequent comment is a reference to their child's ability to pick up dialogue from their world of movies or videos, memorizing it and relaying it with enthusiasm. "Most children show a propensity for imitation and open communication. They are naturally uninhibited and enthusiastic, that is, before the world we live in tends to dull the edges a bit. "I have not yet met a child who does not possess a wonderful imagination," says Robin Allan Gillman, the Director of Gateway Acting School, the educational branch of Gateway Playhouse. She continues, "As most philosophers and psychologists will tell you, we tend to lose our ability to pretend and visualize as time goes on and those "matters of consequence," to quote from Antoine de Exbury's *The Little Prince*, take over.

"This is the greatest time to begin teaching the performing arts, when the child is young, vulnerable and willing to take risks emotionally. They really have no other choice, as this is prime time for sensitivity and inspired thinking, and boy, when you tap into that at a young age, a true artist can emerge," spoken rather passionately by Ms. Allan Gillman, who should know. She began performing at the age of six in a Children's Theater production of *RIP VAN WINKLE*. Along with being a frequent spectator at countless rehearsals, year after year, she performed, trained and eventually taught and directed before she hit the ripe old age of twenty. She explained, "My mom was a terrific teacher and director and I was very lucky to have had her as a role model all my life. She brought so much inspiration to her students and eventually to me."

Many people don't realize that this beginning inspiration, toward training and molding the young actor, is what really rooted the entire history of Gateway Playhouse. After all, Sally, David and Ruthie Pomeran, the latter being Robin's mom, began the Playhouse while they were all apprenticing and training at the local professional summer theater in Bellport, now no longer operating. During their college years, they were bringing their classmates (including Robert Duvall) back in the summers to work at Gateway's Hotel and perform for the guests and the Bellport locals. Gateway had a boarding theater camp for teenagers that existed from that time, right up through the late 70's. This is why it was vitally important for Robin to reinstate some type of training program when she returned from Los Angeles in 1993.

"In LA, all my projects involved casting children, from Ron Howard's *PARENTHOOD*, to the remake of *LORD OF THE FLIES*, television pilots about kids and *MOVIE*'s, all having children's roles to cast. I saw thousands of kids with poten-



James Celentano and Christopher Yates in *BIG*, the musical.

LYONS FUEL OIL CO. INC.

24 Hr. Service

est. 1934

Automatic Delivery

23 Station Road • Bellport, New York 11713
Phone (631) 286-0395 • Fax (631) 286-0396

CANDY CRAVINGS

128 South Country Road
Bellport Village, NY 11713
(631) 286-8100



COLLINS & MAIN

Restaurant and Lounge



Sayville's Culinary Crossroads

"SUPERB"

- ZAGAT -

Piano Lounge/
Live Entertainment

Pre-Theater Pre Fixe

100 Old South Main Street
Sayville

(631) 563-0805

10% Off Dinner

(excluding beverages)

with presentation of show ticket
from Summer/Fall 2000 season



Theater for Kids (con't)

tial, but not many with proper training," says Ms. Gillman, adding "I thought, we still have a wonderful professional theater in our family, there's an empty barn on the premises where it all began, why not use it and give kids a leg up!"

Gateway Acting School has many recent success stories to be proud of. Many graduates are studying at prestigious colleges and universities earning BFA's in the Performing Arts. The young actor who got great reviews in Gateway's recent production of BIG, James Celentano, has been training at Gateway since 1997. Robin adds, "James had an initial spark, a nice singing voice and a wonderful energy, but no skills. His diligence within the program, his understanding of the training process and his commitment to it, enabled his ability to turn into art. He virtually had no competition at his audition, because it is very rare to find kids with talent AND training.

"Most people, not involved with theater, and uneducated in the field, think that this art form is easy to master...you just climb up on stage, and are instantly believable, watchable and commanding. This is because good actors make it look easy." Robin added, "We teach young actors how to explore their imagination, to believe in their given circumstances, to detail and flush out their characters, to truly listen and respond honestly within the context of the play, to be aware of all aspects of performing, script analysis, character relationships, emotional levels, dialects, environment, etc.

The Acting School staff of approximately eight teachers, are carefully chosen by Robin and her husband, Lorrin, who runs the school with her. Most are

from Manhattan, and are working in the entertainment industry on a regular basis. One of the teachers on the staff since 1995, Joe Minutillo, has also been instrumental in the lives of many young students through his teaching in the public school system, this year receiving a lifetime achievement award from The New York State Theater Education Association for his contribution to the arts. His school, South Manor in Manorville, considering its size and age, has placed more kids in the entertainment industry than any other school in the state.

"This passion for sharing this art form is what holds our school together and makes it successful. Acting School students shine in the Children's Theater, find their way to young roles on the Main Stage, go out into the community and enrich their own school's programs, the effects of this training is far reaching. The reputation and professionalism of the Playhouse helps the school, the school, in return, aides the Playhouse. How could it not," concluded Robin, "when training is at our core, it's our history, it is who we are."

SUFFOLK COUNTY PARKS

Presents:

"Biographies on Stage" 2000

At Deepwells Farm - Rte. 25A, St. James
LIE -Exit 56N, Rt 111 to Rte 25A.



Lillian Russell

At the turn of the century, Lillian Russell was acclaimed as America's greatest musical-comedy star. A striking beauty with a magnificent operatic voice, Russell was a precursor to Mae West and Marilyn Monroe.

Sept. 7 - Oct. 15

(Thurs. - Sat. 11:30 am; Sun. 4:00 pm)

*Producer's Performance -Oct. 15 - 4:00 pm

**Admission : \$30 includes
Performance & Light Lunch
RESERVATIONS A MUST!**

Call (631) 862-6080

Friends
for
Long
Island's
Heritage

Robert J. Gaffney,
County Executive



www.gudephotography.com



631-654-8093

Varney's

Restaurant

**Fresh Seafood Daily
Marinated Steaks**

Mon - Thur 11am - 9pm Fri & Sat 11am - 10pm

Closed Sunday

Located on Montauk Highway in Brookhaven

286-9569

Debra Canavan
CLASSICS
Casual Career and Cocktail

micheal stars
new man
for joseph
theory
tommy bahama
jenne maag
nicole miller
brighton leathers
lilly pulitzer
shoshanna
A.B.S.
flax
and much more

53 Main Street
Sayville

631.563.9385



Featured Performer...

David M. Lutken



David M. Lutken hails from Dallas and lives on the Louisiana bayou, but this Southern gentleman's talents have made him a cosmopolitan world traveler.

Lutken began his career as a musician. "I am the youngest of four children, and they all sang and played musical instruments, so I learned to do most of what they did," he said, "But they grew out of it, and I guess I didn't!" Lutken was a chorister at the Royal School of Church Music in England, then acted and sang all through junior high, high school, and college productions. Once in college at Duke University, where he majored in Greek and studied for a year in Italy, he began making some money playing music in bars and honkytonks. "I discovered, much to my amazement, that people would pay me to do this, so I followed the path of least resistance and performed for about ten years after college," he said. Luken plays the guitar, mandolin, banjo, dulcimer, and harmonica and has worked on shows as Musical Director.

Lutken spent a lot of time on the road, and lived in various parts of the country including Connecticut and Colorado. "My act was very theatrical, and a good friend of mine, a songwriter said he thought I ought to be an actor, which I thought might be a comment on my musicianship! I didn't think I was good at recording, and what I was better at was performing, so in 1986 I went to acting school in England." Lutken attended the Webber Douglas Academy of Dramatic Arts then returned and settled in

New York City where he immediately got a job playing Woody Guthrie. He was cast in THE WILL ROGERS FOLLIES in 1992 understudying Mac Davis and later Larry Gatlin on Broadway. When the show closed he played Will Rogers several times in regional theater productions.

"I've gotten the opportunity to do a lot of "Guitar Theater," where the actors are required to sing and accompany themselves on musical instruments," said Lutken, "I've directed quite a few of those in various places." In January, he will direct STARS IN YOUR EYES in North Carolina. "I did it off-Broadway last fall. It didn't last long but it was a great cast and we had a good time!"

Also in the works for Lutken is his own show, a musical based on the Longfellow poem "Evangeline" he is writing, although "it doesn't have much of a part in it for me!" Writing a show is challenging, Lutken says, "I think musical theater is the most difficult, there are so many elements to master. Speaking from an actor's point of view, 8 out of 10 shows don't make it, and that's why the two that do are such special things. I think one of the strengths of THE WILL ROGERS FOLLIES is that it is not your standard musical. It is an interesting and multilayered show for the actors; you must act your role, but you also have to play the actor who works for Mr. Ziegfeld playing that part, and you have to be you as well. You're in the present, the past, and the future, all at the same time. I have to say, one of my favorite parts is Will Rogers."

2001 Gateway Playhouse Survey

Gateway Playhouse is planning its 2001 Season. As usual, we will be awaiting the newest releases from Broadway to present to you. These exciting options are: RAGTIME, SMOKEY JOE'S CAFE, CATS, FOOTLOOSE and MISS SAIGON. In addition to these shows, we have listed below other musicals also under consideration. Please let us know ten shows you'd like to see by numbering them from one to ten, (one being your favorite.)

- | | |
|------------------------------------------------|----------------------------------------------|
| <input type="checkbox"/> Funny Girl | <input type="checkbox"/> Oliver |
| <input type="checkbox"/> The Scarlet Pimpernel | <input type="checkbox"/> Mame |
| <input type="checkbox"/> High Society | <input type="checkbox"/> Oklahoma |
| <input type="checkbox"/> On the Town | <input type="checkbox"/> Fiddler on the Roof |
| <input type="checkbox"/> No, No, Nanette | <input type="checkbox"/> Hair |
| <input type="checkbox"/> Porgy & Bess | <input type="checkbox"/> She Loves Me |
| <input type="checkbox"/> Some Like it Hot | <input type="checkbox"/> Candide |
| <input type="checkbox"/> Gigi | <input type="checkbox"/> Personals |
| <input type="checkbox"/> Zorba | <input type="checkbox"/> Annie |
| <input type="checkbox"/> Bye Bye Birdie | <input type="checkbox"/> Pirates of Penzance |

Please hand this in to our Box Office Staff. Thank you for your help!

ACTING AND MUSICAL THEATRE TRAINING

*Classes now
enrolling!*

all levels of acting for all ages thru adult

GATEWAY ACTING SCHOOL

LEARN FROM THE PROFESSIONALS!

286-9014



WHO'S WHO...



Al Pollog

As often happens in the world of theatre, the people you work with day in and day out become like a large extended family. Recently, Gateway suffered the loss of an integral part of our family. Al Pollog came to us several years ago and volunteered his time and energy to set up and run a volunteer usher program. Since that time he has recruited, trained, scheduled and worked with our dedicated volunteers, and did it all with unparalleled humor, warmth and vitality. Recently, Al passed away but his legacy lives on in the volunteer program he established. His spirit and friendship will be missed.

BRAD BASS (*Stage Manager (Peter)/Wrangler*) is very excited to join Gateway Performing Arts. Originally from Ringgold, VA, he moved to New York City to attend the American Musical and Dramatic Academy, from which he graduated in May. Brad would like to thank God for his many blessings and gifts and his friends and family (Mom & Dad) for their undying love and faith. Bubbe Love & Strawberries!

PAUL BISAGNI (*Will Rogers Jr.*) age 10, has been a student at Gateway Acting School for four years. He has performed at Gateway in THE LOTTERY, THE BIRD'S CHRISTMAS CAROL, SHOWBOAT, THE FAIRYTALE SQUARES, TITANIC, HERE'S LOVE, YANKEE DOODLE DANDY, and FAIRY TALE TRIO, and is thrilled to be part of WILL ROGERS FOLLIES! He enjoys reading and writing, video games, acting and singing at Gateway Acting School, dancing at Stage Door School of Dance, singing in his school choir, and playing clarinet in his school band. Special thanks to Robin, Lorrin, Miss Terry, his parents, and the entire Gateway family for making his dreams come true!

REBECCA BRANCATO (*Will's Sister/Ziegfeld Girl*) recently returned to NYC from the European Tour of WEST SIDE STORY as Consuelo and the understudy for Anita. She was also in the European Tour of SOPHISTICATED LADIES. She is in both Orpheus and Foot & Fiddle Dance Companies in NYC. Graduated from Oklahoma City University with a Bachelor

of Performing Arts Degree. Here at Gateway she has performed in PIPPIN, SOUTH PACIFIC and BIG, played Ginger in WHOREHOUSE and Josie in the premiere of YANKEE DOODLE DANDY. She also performed in various regional theaters as (Adelaide) GUYS & DOLLS, (Joan) DAMES AT SEA and (Hodel) FIDDLER ON THE ROOF. My love goes out to God, mom, dad, family, friends and Philippe.

CHRIS BRICK (*Freddy Rogers*) is happy to appear on the Gateway Playhouse stage. He has performed at BayWay Arts Center in PIPPIN, CHARLOTTE'S WEB and BIG. Chris was also seen in productions by Ovations Dance Academy, Cultural Arts Playhouse and the McGuire Theater. He has attended the BroadHollow summer camps for the past two years. Chris loves dance, music, and being on stage.

SARAH CHANEY (*Ziegfeld Girl*) is pleased to make her Gateway Playhouse debut. Originally from Ohio, Sarah graduated from Miami University (Oxford, OH) and moved to New York in 1998. Some of her favorite roles include Trina in FALSETOLAND, Reno Sweeney in ANYTHING GOES, Jenny Diver (THREEPENNY OPERA) and Chava (FIDDLER ON THE ROOF). Her love goes out to Vadim, her friends, and her family for their undying love and support.

ANN COOLEY (*Associate Choreographer/ Dance Captain/Sun Spirit/Ziegfeld Girl*) is thrilled to be

involved with this production of THE WILL ROGERS FOLLIES. She recently reproduced and staged choreography for the National Tour of VICTOR/VICTORIA directed by Mark Hoebe. She will serve as the assistant choreographer/ dance captain for the Radio City Christmas Spectacular, starring the Radio City Rockettes. Ann has been performing nationwide as a Rockette for the past 7 years. Other credits include: THE WILL ROGERS FOLLIES (National Tours and Regionally) starring Pat Boone, VICTOR/VICTORIA (T.U.T.S./5th Ave. theatres/1st National Tour - dance captain) starring Toni Tennille, NOTHING LIKE A DAME (Broadway, St. James Theatre), 42ND STREET (National Tour) - dance captain - Seoul, S. Korea - associate choreographer - dance captain), GUYS & DOLLS directed by Thommie Walsh, THE ZIEGFELD BALL honoring Julie Andrews. She has also taught intensive workshops in the U.S. and internationally in Tap, Jazz and Musical Theatre. Ann would especially like to thank D.J. Salisbury for bringing her on board to revisit the follies again. She is always appreciative of her supportive family, her fiancé Rob and to the fact that she gets to do this for a living!

CARRIE E. DeMICCO (*Ziegfeld Girl*) recently appeared on Gateway's stage as Ruby Rae in THE BEST LITTLE WHOREHOUSE IN TEXAS. Some of her favorite performance opportunities include hosting the NICKTOONS' ROCKIN' COUNTDOWN, appearing as a magician's assistant, singing and dancing for the nationally acclaimed swing band, Doc Scantlin and His Imperial Palms Orchestra, and singing original songs for numerous recordings. Special thanks to God, Mom, Dad, Natalie, Gregg, Toto and Amadeus! I love you all!

DENISE FAICCO (*Mary Rogers*) is very excited to be back at Gateway after making her debut as "Susan Walker" in HERE'S LOVE-MIRACLE ON 34TH ST. This past spring Denise performed at Symphony Space N.Y.C. the lead role in THE EARTH AND ME. She has especially enjoyed performing in Gateway's Children's Theater. Other regional credits: THE SOUND OF MUSIC, BIG, LI'L ABNER, OLIVER! and SEISKAYA NUTCRACKER. Denise enjoys acting lessons here at Gateway, playing softball and piano. Special thanks to Robin. Hugs to family and friends.

CAVANAUGH'S

"Let's Have Fun"

Est. 1986

◆ New Smoke-Free Dining Room ◆

Serving Lunch Daily Starting at 11:30 • Dinner Served Every Night

Dining Room Open Sunday - Thursday Till 11 PM

Friday And Saturday Till 12 Midnight

DINING SPECIALS

Mondays - 2 For 1 Chicken Wings

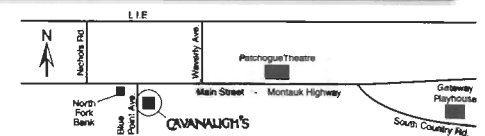
Tuesdays - 20 Oz. Porterhouse \$10.99 • Thursdays - Prime Rib \$11.99

Kitchen Open

Sunday - Thursday Till 12 Midnight

Friday and Saturday Till 2 AM

17 TVs - Quick Draw



255 Blue Point Avenue, Blue Point

631-363-2666

www.eveningout.com/cavspub • www.bluepoint.org

114 WEST MAIN STREET
PATCHOGUE, NY 11772
PHONE 475-4774
FAX 207-0267

TRiO
FINE FOOD & DRINK

KEVIN STAHL
CHEF/OWNER

PLEASE CALL FOR RESERVATIONS

10% OFF DINNER

WITH PRESENTATION OF A SHOW TICKET FROM
SUMMER/FALL 2000 SEASON

WHO'S WHO...

Laurie Gamache (*Betty Blake*) is happy to be back at the Gateway Playhouse. She last appeared here as the Prima Donna in SUGAR BABIES. On Broadway Laurie was Cassie in the final production of A CHORUS LINE. She also appeared in THE RED SHOES, BUSKER ALLEY, and the workshop of SIDE SHOW. Off Broadway she was Penelope, the tap-dancing femme fatale in THE COCOANUTS and she stood by for Twiggy in IF LOVE WERE ALL. Earlier this year Laurie was green from head to toe as the Bride of Frankenstein in MIAMI BEACH MONSTERS. Her regional credits include Mona Kent in DAMES AT SEA, Anita in WEST SIDE STORY, Louise in GYPSY, Lois/Bianca in KISS ME KATE and Rose in BYE BYE BIRDIE.

Don Garverick (*Wrangler*) started revolution in EVITA (Montreal Opera), hit home runs in DAMN YANKEES (Downtown Cabaret Theatre), covered the STATE FAIR (Fireside Playhouse), and was royalty in KISMET (Augusta Opera). While on the SHOW BOAT national tour, Buck logged 69,000 miles and visited 42 states and Canada. Other regional: SHE LOVES ME (Bristol Riverside Theatre), JOSEPH...DREAMCOAT (Carousel Dinner Theatre), and THE NEW MOON (Ohio Light Opera). Film/Television: *Interview with the Vampire*, ABC's *Boy Meets World*, NBC's *3rd Watch*, and Nickelodeon's *Welcome Freshmen* (look closely, you might miss him). He is currently co-starring in *My Life with Brooke* which is destined for a very long run.

Jennifer Hepburn (*Ziegfeld Girl*) is pleased to be making her debut with Gateway Performing Arts. She is currently a senior at New York University working towards a Bachelor in Music. Her favorite roles include Reno in ANYTHING GOES, Cinderella in INTO THE WOODS and Anita in WEST SIDE STORY. Much thanks to her friends and family for their support.

Sean Kelley (*Children understudy*) is a 10 year old 5th grader at Eastport Elementary School. He is currently taking tap at Stage Door School of Dance. He enjoys playing the piano, saxophone and singing. Sean was in this year's school production of ROCK-N-ROLL CAFE.



Because we are proud of where we live...

He also enjoyed backyard theatre when he was younger. Many thanks go out to Diane and Elise Giattino for making this possible.

Brian Laughlin (*Indian of the Dawn/Wrangler*) Originally from Nebraska, Brian moved to NYC to, as his parents put it, "waste his life away and end up dead in an alley." Fortunately, he is still alive and wasting his time most recently at Gateway in SOUTH PACIFIC, PIPPIN, WHOREHOUSE, YANKEE DODDLE and BIG, THE MUSICAL. Before Gateway he was seen in WEST SIDE STORY (Riff), DAMN YANKEES (Bomber), MUSIC MAN, OUR TOWN (George), GLASS MENAGERIE (Tom) and a bunch of TV and Films that you've probably never heard of. Thanks to my family for all their love, support and most importantly their cash.

Robin Levine (*Ensemble*) is very happy to be spending her summer at Gateway Playhouse. She is a recent graduate of the University of Illinois at Urbana-Champaign, where she received a BFA in Dance. She has spent this past year dancing in YULETIDE CELEBRATION with the Indianapolis Symphony Orchestra and as a Gemini Twin in A FUNNY THING HAPPENED ON THE WAY TO THE FORUM. She recently portrayed Dawn in Gateway's production of BEST LITTLE WHOREHOUSE IN TEXAS as well as Alice Nolan in the premiere production of YANKEE DOODLE DANDY. Thank you to my family, and Paul for their constant support and love.

David M. Lutken (*Will Rogers*) Broadway: THE CIVIL WAR, THE WILL ROGERS FOLLIES (Will Roger's understudy). New York City Opera: The Balladeer in PAUL BUNYAN by Benjamin Britten and W.H. Auden. Off Broadway: STARS IN YOUR EYES, WOODY GUTHRIE'S AMERICAN SONG, THE PORTABLE PIONEER AND PRAIRIE SHOW, WINTERMAN. Regional Theater: ELMER GANTRY, FINIAN'S RAINBOW at the Goodspeed Opera House, PUMP BOYS AND DINETTES, HONKY TONK HIGHWAY, IN THE DEEP HEART'S CORE as W.B. Yeats. Originally from Dallas, Texas, he studied acting



Irish Coffee



Hub

at

**Bellport
Country Club**

always open to
the public.

The favorite for
pre- and post-show
dining.

Conveniently located between
Gateway Playhouse and
Patchogue Theater on
SOUTH COUNTRY ROAD, in
BELLPORT VILLAGE

Available for groups and
small parties.

FOR RESERVATIONS
CALL
286-4227

Also visit
Irish Coffee



Hub

on CARLETON AVENUE
in EAST ISLIP
277-0007

PAPA NICKS PIZZA



Gyros, Salads, Heros, Dinners
Daily Lunch Specials

286-6400

117C-South Country Road, Bellport Village, NY

WHO'S WHO...

at the Webber Douglas Academy of Dramatic Arts in London.

MICHAEL MASTRODDI (*Radio Engineer/Wrangler*) is thrilled to return "home" here to the Gateway Playhouse. He was last seen here as the mangled Courier in 1776. Other Gateway credits include CABARET, IT'S A WONDERFUL LIFE, JOSEPH, DRACULA, and HELLO DOLLY! Michael recently returned from Atlantic City where he appeared in FOOTLOOSE: THE MUSICAL. While studying at the Cincinnati College-Conservatory of Music, he appeared in productions of BABY, OUR WORLD BLOOD BROTHERS, CHILDREN OF EDEN, and the world premier musical CHANCES. Michael was also honored by being a soloist with the Cincinnati Pops Orchestra for their CENTURY OF BROADWAY concert. He sends his love to his mentors Robin and Min, his family, and much love to JJ.

DANA LYNN MAURO (*Ziegfeld's Favorite*) is thrilled to be making her debut at Gateway Playhouse. Dana will be appearing as Tina in the new Off-Broadway comedy play GAME SHOW debuting this fall at the Theatre at 45 Bleeker. Last season, Dana appeared in the National Tour of COMPANY as April. On Broadway, Ms.

Mauro appeared in Kander & Ebb's Tony Nominated STEEL PIER as well as Madison Square Garden's A CHRISTMAS CAROL starring Tony Randall and Ben Vereen. Other 1st National Tours include VICTOR/VICTORIA starring Toni Tennille where she played the role of Norma Cassidy, BIG (Miss Watson) and CRAZY FOR YOU (Vera). Favorite Regional Productions: CALL ME MADAM - Paper Mill Playhouse with Leslie Uggams, MAME (Gloria) with Nancy Dessault - Pittsburgh's CLO and The Fox Theatre, COMPANY (Kathy) and CHICAGO (Liz) - PGH Playhouse and A CHORUS LINE (Cassie) - Fulton Theatre. Recent TV credits include "Law & Order" (SVU), Nickelodeon and numerous commercials.

JENNIFER McCAMISH (*Ziegfeld Girl*) is a graduate of the University of Texas in Austin with a Bachelor of Arts in dance. Her educational and professional career has stretched worldwide with scholarships and training in London, L.A., New Orleans, and New York. Jennifer has a diverse repertoire which includes professional performances of THE NUTCRACKER with the Delta Festival Ballet to soloist with the Delia Stewart Jazz company and Dance Repertory Theater. Other performances include WHOREHOUSE (Linda Lou), HERE'S LOVE (Dance Captain), OKLAHOMA, TAP GIRLS, LEGENDS IN CONCERT, and Gateway's most recent performances of BIG, THE MUSICAL. She also starred as Barbie for Mattel toys. Lots of love and thanks to my family.

VANESSA McMAHAN (*Ziegfeld Girl*) is thrilled to be back at Gateway after performing at the Patchogue Theater with the National Tour of VICTOR/VICTORIA last spring. Most recently she was seen in MY ONE AND ONLY and OKLAHOMA! at the Reagle Players. She has also performed at Hershey Park and at Walt Disney World as a Kid of the Kingdom.

STEPHANIE MEADE (*Ziegfeld Girl*) is making her debut at Gateway. She was most recently seen performing as the Geminae in A FUNNY THING HAPPENED ON THE WAY TO THE FORUM at the LaComedia Dinner Theatre in Springboro, OH. Having originally pursued a ballet career, she has also performed numerous ballets along the east coast including SWAN LAKE, NUTCRACKER, and many contemporary ballets. She is originally from Louisville, KY and now lives in New York City where she continues to pursue a musical theatre career.

MIA MULVEY (*James Rogers*) is thrilled to be returning to Gateway Playhouse after making

THE BANK OF NEW YORK

LONG ISLAND REGION

32 Station Road
Bellport, New York 11713

Virginia Asero
Assistant Vice President

(631) 286-4200

Member FDIC 1986 The Bank of New York

24-hour ATM

BELLPORT BANKING
OFFICE LOCATED AT:

Cilantro's

*Eclectic New American Cuisine
Fine Dining and Cocktails*

- Pre Theater Dinner Specials -
- Live Jazz on Friday Nights -
- Prize Fixe Menu Always Available -

Join Us Before or After

The Theater For A

Cocktail, Cappuccino or Dessert

154 Montauk Highway,
Blue Point, New York 11715

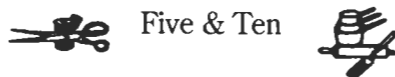
Tel. 631-363-0500

Fax. 631-363-0506

www.menisonline.com

THE VARIETY MART

An Old Fashion



Five & Ten

138 Main Street
Bellport, New York 11713

631-286-2210

BELLPORT PAINT & WALLPAPER

COMPLETE PAINT & WALLPAPER SUNDRIES

- PERSONALIZED SERVICE •
- COMPUTER COLOR MATCHING •



631-286-5850

145 South Country Rd.
Bellport, NY 11713

BRICK HOUSE BREWERY & RESTAURANT



PLAYHOUSE DINNER SPECIALS

(Available Sunday-Thursday 4pm-10pm)

Opening Act:

Tossed Salad, Caesar Salad
or Soup

Main Stage:

Choice of:

Sesame Crusted Tuna Steak

Rigatoni ala Vodka

Sliced Marinated Steak

Apple Glazed Roast Loin of Pork

Homemade Meatloaf

Chicken Marsala

- with potatoes & vegetable -

Final Act:

Coffee or Tea Plus

Choice of: Chocolate Stout Cake,

Cheesecake or Carrot Cake

(All soups and desserts made here
on the premises)

Complete Dinner Price...
\$12.95

67 W. Main St., Patchogue
447-BEER

ALL MAJOR CREDIT CARDS

Visit us on the web at

www.brickhousebrewery.com

WHO'S WHO...

her debut this summer in **YANKEE DOODLE DANDY** (young Georgette). Mia (age 8) attends the Westhampton Beach Elementary School and studies acting at the Gateway Acting School. She was in camp productions of **GUYS AND DOLLS** and **THE WIZARD OF OZ**, and is currently in **TOY FACTORY** here at Gateway. Mia has 5 years experience in dance and takes voice lessons. Mia has won several writing awards which include Suffolk County Reading Council and Reflections. She would like to thank everyone at Gateway for the wonderful opportunities they have given her, her teachers and friends at WHBES for their support, Ms. Renee for teaching her how to dance, and her family for their love, encouragement, and for being her biggest fans!

HEATHER OLT (*Ziegfeld Girl*) is thrilled to be spending her summer at Gateway. Recently, she portrayed Angel in Gateway's production of **WHOREHOUSE**. Prior to that, she galavanted around the country as Meg in **BRIGADOON**. Other favorites include: **PIP-PIN**, **YANKEE DOODLE DANDY**, **INTO THE WOODS** (Cinderella), **GODSPELL** (Sonia), **BIG RIVER**, **THE MOST HAPPY FELLA**, **THE MIKADO** and Queen Vashti in the new musical **QUEEN ESTHER**. She received a BFA in Music Theatre from Illinois Wesleyan University. She would like to thank God for her blessings and family and friends for their endless love and support. Momma Jo, this one's for you!

MICHELLE PRUIETT (*Ziegfeld Girl*) is very glad to be here for her first season at Gateway. She just portrayed Shy in Gateway's **WHOREHOUSE**. Recently her credits include: **A CHRISTMAS CAROL** (Shawnee Playhouse), featured soloist in "PATTERNS: A MALTBY AND SHIRE REVUE," and a season at New London Barn. "I'd like to thank all my loved one's for their support. Thank you!"

GEORGE RIDDLE (*Clem Rogers*) made his theatrical debut in **THE CORN IS GREEN** starring Eva LeGallienne and has appeared in over 100 major productions. He played Clem Rogers in **THE WILL ROGERS FOLLIES** and was featured in **BUSKER ALLEY**, both directed by Tommy Tune; **ANYTHING GOES** starring Leslie Uggams, **PIRATES OF PENZANCE** starring James Belushi, **A VIEW FROM THE BRIDGE** starring Luther Adler, and **HAPPY TIME** starring James Munshin. Pre-Broadway: **TEXAS FLYER** starring Larry Gatlin. Off-Broadway he logged over 5,000 performances

in the original New York production of **THE FANTASTICKS** as Hucklebee, the Boy's Father, as well as the OBIE Award winning **THE PRODIGAL** and **HUUI! HUUI!** at the NYSG Public Theatre directed by Joseph Papp. On television he was featured in "The Trials of Standing Bear," "Adams Chronicles," "Search For Tomorrow," "The Defenders" and can currently be seen as a crusty cowpoke in Wendy's commercial.

SHANNON ROCHE (*Indian Angel/Ziegfeld Girl*) was just seen at the Theatre Barn where she performed in **DON'T DRESS FOR DINNER**, **BABY** and **BLACK COFFEE**. Other credits include: National Tours - **ANNIE**, **A CHRISTMAS CAROL**, and last summer performed the role of Marty in **GREASE** at the Shawnee Playhouse. She's worked regionally at the Flat Rock Playhouse, Mill Mountain Theatre, and Mill Brook Theatre. Shannon's worked on cruise ships, Disney World, and even got in a couple of industrials with Mattel. She's excited to be at Gateway Playhouse and would like to thank her Mom for the "Tall Genes"...it paid off!!!

STANLEY SCHORR (*Wiley Post/Radio Announcer's Voice*) is proud to share the Gateway stage with this talented cast. Those of you who frequent Gateway productions may remember him from **1776** (Thomson), **SHOW BOAT** (Ensemble), **MEET ME IN ST. LOUIS** (Mr. Smith), or **TITANIC** (J.H. Rogers). Other regional credits include Mr. Snow in **CAROUSEL**, Col. Pickering in **MY FAIR LADY**, Capt. von Trapp in **THE SOUND OF MUSIC** and Phillip in **PHANTOM**.

PAUL ALLAN (*Producer*) is proud to be presenting the 50th season of live theatre here at the Gateway Playhouse. Having grown up in and around the theatre, Paul has been able to watch Gateway "grow up" over the years and expand into many different areas - including Touring productions produced Nationally and Internationally, and a successful set rental company. Paul currently splits his time between the season here at Gateway Playhouse, and the summer concert series at the Patchogue Theatre For The Performing Arts. Some of Paul's favorite projects to date include **TOMMY**, **PHANTOM**, and **ONCE ON THIS ISLAND** on this stage - and **TITANIC** at the Patchogue Theatre, which was the first live musical presentation on that stage since 1934. Paul is grateful for the support of his family and

staff who are a continuing means of encouragement during challenging times.


D.J. SALISBURY (*Director-Choreographer*) is happy to return to Bellport after having directed and choreographed **THE WIZARD OF OZ** for the Gateway Playhouse last November. Busy on both coasts in the new millennium, D.J. has directed and/or choreographed productions ranging from **Giddy** (A FUNNY THING HAPPENED ON THE WAY TO THE FORUM and YOU'RE A GOOD MAN CHARLIE BROWN) to **Gritty** (MAN OF LA MANCHA) and the new musical (FEMME FATALE). Additionally, he has been writing the book and lyrics for two new musicals, **HOME** and **WHERE THE LILIES BLOOM**. Other credits include: Choreographer for **MING** at Paper Mill Playhouse, Associate Director for the **Diahann Carroll Lerner and Loewe Revue** and choreography for numerous productions for **Sacramento Music Circus**. A long association with **THE WILL ROGERS FOLLIES** (Dance Assistant on the Workshop and Broadway Production, Dance Captain and Swing for two years with the National Tour), D.J. would like to acknowledge with gratitude the marvelous

team of creators who, ten years ago introduced him to the exceptional humanitarian and "cow-boy philosopher" Will Rogers. This one's for Jeff, Tommy and Phil.

ROBIN JOY ALLAN (*Casting and Artistic Director*) has been immersed in theater her whole life, performing, musical directing, teaching, directing, producing and most enjoyably, observing many, many great actors and directors work. In 1985 she began her casting career in New York and then Los Angeles, where she had the pleasure of working with Ron Howard, Rob Reiner, Jerry Zucker and Chris Carter (pre-X-Files!) on several projects as Associate and Casting Director, including: **PARENTHOOD**, **WHEN HARRY MET SALLY** and **GHOST**. She led the search for unknowns, discovering Balthazar Getty for the remake of **LORD OF THE FLIES**, and cast Leonardo DiCaprio in his first TV series-regular role in 1989's **PARENTHOOD**. She is dedicated to the educational development of young actors and, along with her husband Lorrin, has founded Gateway Acting School for that purpose. Her greatest accomplishment to date is her beautiful daughter, Hayley Lynn.

Hine Grove Inn

On The Swan River



est. 1910

Open Weekdays
11:30 A.M.
Saturday
11:30 A.M.
Sunday
12:00 P.M.

EARLY BIRD SPECIALS
Monday thru Saturday, 3 p.m. to 6 p.m.,
Sunday 12 p.m. to 5 p.m.

Waterside Patio Dining on the Swan River

DINNER
served 3 p.m. to 10 p.m.
Weekdays & Saturdays
Sundays 12 p.m. to 9 p.m.

LUNCH
Monday thru Saturday,
11:30 a.m. to 3 p.m.

Chapel Ave. & First Street • East Patchogue, NY
475-9843

OPEN WEEKDAYS 11:30 AM • CLOSED TUES. • SAT. 11:30 AM • SUNDAY 12 PM
Directions: LIE to Exit 64, Route 112 South to Montauk Hwy. (27A). Make a left (East) on Montauk Highway to fork in road. Take right side of fork then immediate right onto Chapel Ave.

OPEN 6 DAYS A WEEK **CLOSED TUESDAY**

(631) 475-1790-1791 Emergency Boarding
 Service
 Fax (631) 475-1807 Call 289-1524

**PATCHOGUE
 PLATE GLASS CO. INC.**

GLASS-MIRRORS-PLEXIGLASS-STORE FRONTS
 AUTO GLASS-INSURANCE CLAIMS

RON HENTHORNE 7 Railroad Ave.
 Manager Patchogue, NY 11772



*Pub Fare That Will
 Make Your
 Tongue Smile*

Relax After The Show
 Kitchen Open 11AM to
 11PM, Bar 'til 1AM
 Closed Sun.

Just steps from Theater parking
 70 North Ocean Avenue
 Patchogue

(631) 289-1900

THE NUTCRACKER

presented by

**OVATIONS
 DANCE ACADEMY**

in conjunction with

**The Brookhaven
 Youth Orchestra**

**Dec. 2 and 3,
 1:00 p.m. and 7:30 p.m.**
 at The Patchogue Theatre for the
 Performing Arts

For Ticket Info Call
 Oventions Dance Academy

**Director: Orlando Peña
 631-218-0315**

WHO'S WHO...

WILLIAM FOSTER McDANIEL (*Musical Director*) has provided musical direction for Gateway/Candlewood productions of AIN'T MISBEHAVIN', ONCE ON THIS ISLAND, FIDDLER ON THE ROOF, NUNSENSE II, GUYS AND DOLLS, A FUNNY THING HAPPENED ON THE WAY TO THE FORUM, SHOW BOAT and HELLO DOLLY! He recently conducted off-Broadway's DINAH WAS, a theatrical tribute to Jazz singer, Dinah Washington. Mr. McDaniel began his career as pianist-conductor of off-Broadway's long-running THE FANTASTICKS. He has since conducted for Broadway and National Touring companies of TIMBUKTU, BUBBLING BROWN SUGAR and a European production of SOPHISTICATED LADIES. Mr. McDaniel's own compositions have received performances by the Philharmonic of Greensboro, the Savannah Symphony Orchestra, the Mozart Society Orchestra at Harvard, and the Brooklyn Philharmonic. He is a graduate of Capital University and Boston University, and was a Fulbright Scholar in Paris.

EILEEN F. HAGGERTY (*Production Stage Manager*) is delighted to be at Gateway Playhouse with this production. As a stage manager, she has toured with THE WIZARD OF OZ starring Mickey Rooney and Eartha Kitt and GOOSEBUMPS - LIVE ON STAGE. Additionally, she was Assistant Performance Director and Production Manager with Ringling Bros. and Barnum & Bailey and production coordinator on BARNUM'S KALEIDOSCAPE. Eileen has worked at Paper Mill Playhouse, TheatreVirginia, Manhattan School of Music

THE SAYVILLE INN
 Dinner Nightly 5 P.M.
 (631) 567-0033
 Pamela Raymond
 Richard Stafford
 199 Middle Road
 Sayville, NY 11782

OSPREY'S DOMINION

Enjoy some here Tonight!
VISIT THE WINERY
 Osprey's Dominion Vineyards, Ltd.
 44075 Main Road, Peconic, NY 11958
 (631) 765-6188 - Fax: (631) 765-1903

and the Model Secondary School for the Deaf Performing Arts. Recent productions include PBS/Great Performances CRAZY FOR YOU and the workshop of FEMME FATALE.

MARCIA MADEIRA (*Lighting Design*) previously designed THE WILL ROGERS FOLLIES and THE WIZARD OF OZ for Gateway. She received a Tony nomination and won the Drama Desk Award for NINE. Other Broadway designs include MY ONE AND ONLY with Tommy Tune and Twiggy, MARILYN, AN AMERICAN FABLE with Scott Bakula and THE MUSIC MAN with Dick Van Dyke. Off Broadway designs include: CLOUD 9 directed by Tommy Tune; PRIVATES ON PARADE with Jim Dale and Simon Jones; and THE TRANSPOSED HEADS directed by Julie Taymor.

COSTUME WORLD (*Designer*) is honored to be working with Gateway Playhouse once again and their talented team of technicians and actors. Costume World, the nation's second largest costume rental house, has locations in Florida, Dallas and Pittsburgh, providing between 600 and 800 costumes to esteemed theatres and directors throughout the country weekly.

VOLUNTEERS NEEDED

Interested in being an usher
 or volunteer technician?
 Call **286-0555**

Swan Bakery

"Serving the Community Since 1946"

Official Baker to the Gateway Playhouse

Guy J. Gagliano • Robert E. Roode

15 South Country Road
 East Patchogue, NY 11772
 Tel. (631) 475-9626

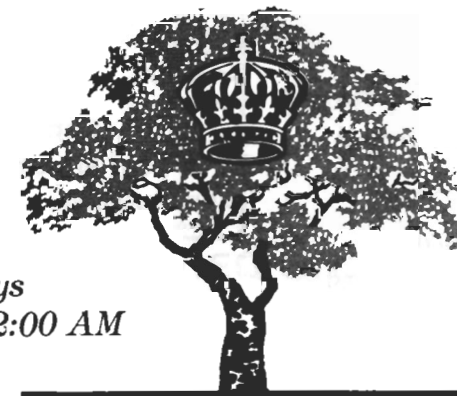
Before or After The Show Late Night Dinner • Dessert and Coffee

All Baking
 Done On
 Premises

Breakfast,
 Lunch and
 Dinner

Open 7 Days
 6:00 AM - 2:00 AM

Daily Specials



ROYAL OAK

Diner - Restaurant

Station Road and Sunrise Highway - Bellport, New York 11713

TEL. (631) 286-5757

Bay Street Theatre

"one of the country's pre-eminent regional theatres"
- CBS News Sunday Morning



New and Classic Plays & Musicals,
Cabaret, Chamber Music, Concerts,
Play Readings, Special Events,
and Theatre in the Schools.



For 2000 Season Brochure or Ticket Information,
Please Call: 725-9500

★ Save the date! Summer Gala Benefit Bash ★

With guest auctioneers Julie Andrews, Alex Baldwin, and Chevy Chase
Saturday, July 8 Call 725-0818 ★

ORDER BY PHONE **(631)725-9500** ON THE LONG WHARF, SAG HARBOR

COLDWELL BANKER

JOHN ASHLINE

Licensed Associate Real Estate Broker

(631) 289-1400 BUS., (631) 654-5001 FAX
ashline@coldwellbanker.com E-MAIL

BELLBROOK REALTY, INC.
66 MEDFORD AVENUE
PATCHOGUE, NY 11772

Each Office is Independently Owned and Operated

STAGE DOOR Dance SCHOOL OF

CALL FOR SUMMER/FALL
REGISTRATION

PRE-SCHOOL THRU ADULTS • FAMILY DISCOUNTS

654-8858

25 PATCHOGUE-YAPHANK ROAD • EAST PATCHOGUE

Our students have performed at the
Gateway Playhouse Mainstage and Children's Theatre

JIM'S DELICATESSEN

2478 Montauk Highway
Brookhaven, New York
(Located next to the firehouse)

286-2333

Original Home of
the Buy a Pound,
Get a Pound Free Salad

Hot and Cold Catering,
Breakfast and Hot Lunch,
Specialty Sandwiches,
Homemade Soups and
Salads, Wraps

OPEN DAILY 5AM - 10PM

Swezey

FUEL CO., INC. - EST. 1919

Suffolk's Largest Family
Owned Oil Company

- Automatic Oil Delivery Service
- 24-Hour Emergency Service
- Budget Plans That Pay You Interest
- Expert Installation Of Boilers,
Burners, Hot Water Heaters &
Pool Heaters



475-0270

51 RIDER AVE., PATCHOGUE

Ruland

Funeral Home, Inc.

OUR REPUTATION FOR 'EXCELLENCE' HAS ENDURED SINCE 1856.

475-0098

500 North Ocean Avenue; Patchogue, New York 11772

Proudly Supporting the Arts
that Enrich Our Lives

A FAMILY-OWNED Funeral Home - The Romeo Family of Patchogue
Discover how affordable 'Excellence' can be!

Mayer's

FLOWER COTTAGE

Family Owned Since 1929

"We Express Your Feelings -
Beautifully"

400 Medford Ave., Patchogue
(One Block North of Sunrise Highway)

(631) 475-1779



COLEMAN

CESSPOOL SERVICE, INC.

ART COLEMAN

475-1733 • 878-2010

Family Owned and Operated
For Over 50 Years

1 Chapel Avenue, East Patchogue, New York 11772

- Dedicated to Honest & Reliable Service •
- Precast Cesspools Installed •
- Portable Toilet Rentals •

ROE AGENCY INC.

OVER A CENTURY OF COMMITMENT
Since 1898

**PERSONAL AND
COMMERCIAL INSURANCE
PROPERTY
CASUALTY
LIFE
HEALTH
FINANCIAL SERVICES**

Walter A. Roe, President
Patricia A. Mankowski, VP and Secretary
Virginia Flynn, VP and Treasurer

125 EAST MAIN STREET
PATCHOGUE, NY 11772-0970
475-4000
FAX 475-7648
E-MAIL: roe@nais.com



Old Inlet Inn



Fine Dining

Dinners from 5:00 p.m.
Sunday Brunch 12 - 3:00 p.m.
Sunday Dinner 3 - 9:00 p.m.
Closed Mondays

Ten Minutes From The Beautifully Renovated Patchogue Theater

Show Tune Sing-A-Longs on
Fri. with Jim Ahrend and others
at the Piano 8:30 p.m. - 12:30 a.m.

Walter A. Roe, Prop. Erik C.W. Brown, Chef

108 So. Country Road, Bellport
286-2650

10% Entree Discount
with Theatre Tickets

GATEWAY PLAYHOUSE STAFF

Executive Producers	Ruth and Stan Allan
Producer	Paul Allan
Associate Producer	Jeff Bellante
General Manager	Gale Edwards
Casting/Artistic Director	Robin Joy Allan
Company Manager	Stanley Schorr
Director	D. J. Salisbury
Musical Director	William Foster McDaniel
Associate Choreographer/Dance Captain	Ann Cooley
Production Stage Manager	Eileen F. Haggerty
Assistant Stage Manager	Erin Kraus
Lighting Designer	Marcia Madeira
Sound Designer	Greg Reif
Costume Designer	Kim Wyck
Technical Director	Brodie Steele
Master Electrician	Brian Loesch
Costume Coordinator	Cheryl Randal
Wardrobe Assistant	Clarissa Smith
Master Carpenter	Mark Frederick
Master Rigger	A.D. Garrett
Properties Mistress	Courtney Alphin
Master Scenic Painter	Kim Lecker
Carpenters	Genevieve Fanelli & Nate Hillard
Interns	Courtney Alphin, Hillary Matlin
Music Contractor	Dan Yeager
Box Office Manager	Nancy Kana
House Manager	Kelly Adee, Elizabeth Bender, Laurie Parr
Group Sales	Nadine Hazard
Box Office Staff	Jennifer Fragano, Danielle Frasca, Jodi Grega, Melissa Grossarth, Gladys Hawkins, Matt Kirk, Scott Maguill, Sarah Jean Miller, Greg Monteith
Administrative Assistant	Janet Trahan
House Staff	Doug Bernhard, Bob Coupe, Cathy Esposito, Don Harrison, Earlene Johnson, Mil Kana, Joe Kelly, Robert Nofi, Chet Parr, Theresa Pavanello
Maintenance/Landscaping Supervisor	Bob Nofi
Concessions Manager/Production Photographer	Mil Kana
Sound Consultant	Dominic Sack
Publicist	Linda Unger
General Counsel	Ann L. Nowak & Associates

PATCHOGUE THEATRE for the PERFORMING ARTS STAFF

Managing Director	Tim Wilkins
Technical Director	Brodie Steele
Sound Engineer	Mark Clark
Master Electrician	Chris White

Gateway Playhouse would like to thank our volunteer staff for their dedication and support. It is much appreciated.

Marie Rachek - Head Usher

Ushers - Carmela Aiosa, Missy Atchue, Olga Belz, June Budd, Anne Burke, Martha DeRuiter, Mary Fox, Irene Fritz, Marian Harrison, Howard Lehman, Alice Rucker, Terry Seng, Pat Siegel, Cami Smith, Kim Stasheff, Gail Spaulding, Rita Wehner, Carol Weinstein, Patricia Yurdiga

IF YOU WOULD LIKE TO JOIN OUR VOLUNTEER STAFF CALL 286-0555

WARNING - The photographing or sound recording of any performance is strictly prohibited.

Gateway Playhouse offers a wireless sound enhancement system for the hearing impaired. Inquire at the box office for more information.

FIRE NOTICE The exit indicated by a red light and sign nearest to the seat you occupy, is the shortest route to the outside. In the event of fire or other emergency, please do NOT run. WALK to that Exit. However, under normal circumstances, when leaving the Theatre, use the center rear exits. SMOKING is prohibited in the BUILDING, as required by the Suffolk County NO SMOKING Ordinance. Smoking in any area designated "No Smoking" renders the offenders subject to a fine, or imprisonment, or both.



Casual Family Dining

Come Join us Before
or After the Show

Senior Menu Always Available
Children's Menu Only \$2.99

7 a.m. - 10 p.m. 7 day/week
240 East Main Street,
Patchogue

654-3641



Quality Footwear for the Entire Family Since 1927

- Helpful, Friendly Service
- Areas Largest Selection
of Sizes & Widths AA-EEEE

Rockport, Easy Spirit, Florsheim, New Balance, Stride Rite, Selby, Teva, Timberland, Skechers, Munro, Dexter, Keds, Reebok, Dyeables, Topsider, Soft Spots, Clarks, etc.

10% OFF any purchase
with ad only

Excludes Easy Spirit, Dr. Martens & other offers. Expires 12/31/00

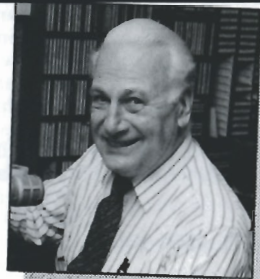




Bryan McGowan, 5:30 - 10:00 a.m.

Join Your **wlim** STEREO Family

Monday - Friday



Jack Ellsworth,
"Memories in Melody"
10:00 a.m. - Noon



Bob Stern, Noon - 3:00 p.m.
1-2 BDWY. Hollywood Show

wlim STEREO

1580 AM

Long Island Music

- Big Bands
- Popular Standards
- Local & Community News
- Daily Prizes

GLENN MILLER

FRANK SINATRA

ROSEMARY CLOONEY

BARBRA STREISAND

NAT KING COLE

DORIS DAY

BENNY GOODMAN

TONY BENNETT

BING CROSBY

*Coming soon
to our
sister theatre!*

PATCHOGUE THEATRE

FOR THE PERFORMING ARTS

71 E. Main St., Patchogue

**THE IRISH
DESCENDANTS**
SEPTEMBER 20,
8:00



**THE
ASSOCIATION**
SEPTEMBER 21,
8:00

**FRANKLIN'S
BIG
ADVENTURE**
OCTOBER 7,
2:00 & 5:00



STEEL PIER
OCTOBER 13-14

**VIDBEL'S
OLDE
TYME
CIRCUS**

OCTOBER 19-22



All shows subject to availability and date and/or time change.
All tickets subject to handling and facilities charges.
Multi-Artist acts subject to lineup changes.

Presented By
GATEWAY
PERFORMING ARTS

TICKETS ON SALE IN THE LOBBY
OR PURCHASE ONLINE AT
www.4tixnow.com

CALL 286-1133 or 1-888-4TIXNOW

GATEWAY

PERFORMING ARTS

Announces A
Special Production Of...



A Musical Based On The Gospel
According To St. Matthew

Featuring the hits...
"Oh Bless the
Lord, My Soul"
"Day By Day"
"Save the People"
"Turn Back, Oh Man"

A mystical and imaginative story
about a modern day Messiah.

"GODSPELL rattles the soul
like a tambourine and fills
the theatre with its own
sense of joy"

**FOR ONE WEEK ONLY
NOVEMBER 1-5**