



*Certain music can only be heard
a thousand miles from anywhere.*

How long has it been? Would you even recognize it if it started again?
Sometimes, the feelings that matter the most get buried under a stack of "To Do's."
So with low fares available on AA.com, isn't it time to get away? Together.

American Airlines
Great low fares now available on AA.com.®



American Airlines and AA.com are marks of American Airlines, Inc.

From One Sensational Season To The Next...

Gateway
PLAYHOUSE



JULY 10 -
JULY 27

RAGTIME
★ THE MUSICAL ★

FIDDLER ON THE ROOF
RAGTIME

FORBIDDEN BROADWAY
ANNIE GET YOUR GUN

JESUS CHRIST SUPERSTAR
SWING!

2 0 0 2 S E A S O N


ROLEX




*Lady Oyster Perpetual
Stainless steel and 18kt. gold chronometer with Oyster bracelet.*

*Men's and Midsize Oyster Perpetual Datejusts
Stainless steel and 18kt. gold chronometers with Jubilee bracelets.*

ROSE
JEWELERS

SOUTHAMPTON: 37 MAIN STREET, 439-283-5757
PATCHOGUE: 74 EAST MAIN STREET, 437-475-1447

Rolex, , Oyster, Oyster Perpetual, Jubilee and Datejust are trademarks.

A LETTER FROM THE PRODUCER

2002 We are proud to be Long Island's only professional musical theater, able to bring you top-notch entertainment right here in Suffolk County. We enjoy the continuing challenge of offering you the right mix of the latest Broadway releases and favorite classics, staged with the artistic flair you have come to expect from a Gateway show. Since we are a regional theater, with employees representing four unions, we have the opportunity to hire actors and artistic staff with Broadway and National Tour experience. *Forbidden Broadway* was directed by Phil George, the co-director of the current Drama Desk Award-winning production now on Broadway, and will be back to direct *Annie Get Your Gun* for us. All four *Forbidden Broadway* cast members have performed in the Broadway show or on tour, Valerie Fagan has gone from our production straight into the New York show! *Ragtime* features five actors who have appeared in the Broadway productions of *Grease*, *The Phantom Of The Opera*, *Titanic*, *Les Miserables*, *Saturday Night Fever*, *Ragtime*, *Chicago*, and *Miss Saigon*, and our set and costumes are from the National Tour. We are keeping the details a secret, but our *Jesus Christ Superstar* will be a riveting, cutting edge production you'll just have to see for yourself - be prepared to be electrified! And *Swing!* is directed by Charlie Marcus, who starred in the National Tour, and features other performers from the Broadway and National Tour casts. This season, our 52nd, we are pleased to say that half of our productions are Long Island premieres - *Forbidden Broadway*, *Ragtime*, and *Swing!* It is a lot of fun for us to be the first theater on the Island to mount a production since the original on Broadway. We hope you like being able to see a Broadway-caliber version of a show you may have missed on the Great White Way, or if you've seen it on Broadway, see it again in a fresh, new way. It is our pleasure and our privilege to bring you an enthralling entertainment experience, we hope you enjoy the show!

Yours truly
Paul Allan

ROE AGENCY INC.

OVER A CENTURY OF COMMITMENT
Since 1898

PERSONAL AND
COMMERCIAL INSURANCE
PROPERTY
CASUALTY
LIFE
HEALTH
FINANCIAL SERVICES

Walter A. Roe, President
Patricia A. Mankowski, VP and Secretary
Virginia Flynn, VP and Treasurer

125 EAST MAIN STREET
PATCHOGUE, NY 11772-0970
475-4000
FAX 475-7648
E-MAIL: roe@nais.com



Old Inlet Inn



Fine Dining Since 1980

Dinners from 5:00 p.m.
Sunday Brunch 12 - 3:00 p.m.
Sunday Dinner 3 - 9:00 p.m.
Closed Mondays

Four Blocks From The Gateway
Playhouse and Ten Minutes From
The Beautifully Renovated
Patchogue Theater

Piano Bar Sat. 8:30 p.m. - 12:30 a.m.
with Trevor Davison and others

Walter A. Roe, Proprietor

108 So. Country Road, Bellport
286-2650

10% Entrée Discount
with Theatre Tickets

ACTING AND MUSICAL THEATRE TRAINING

*New Classes
now enrolling!*

all levels of acting for all ages thru adult

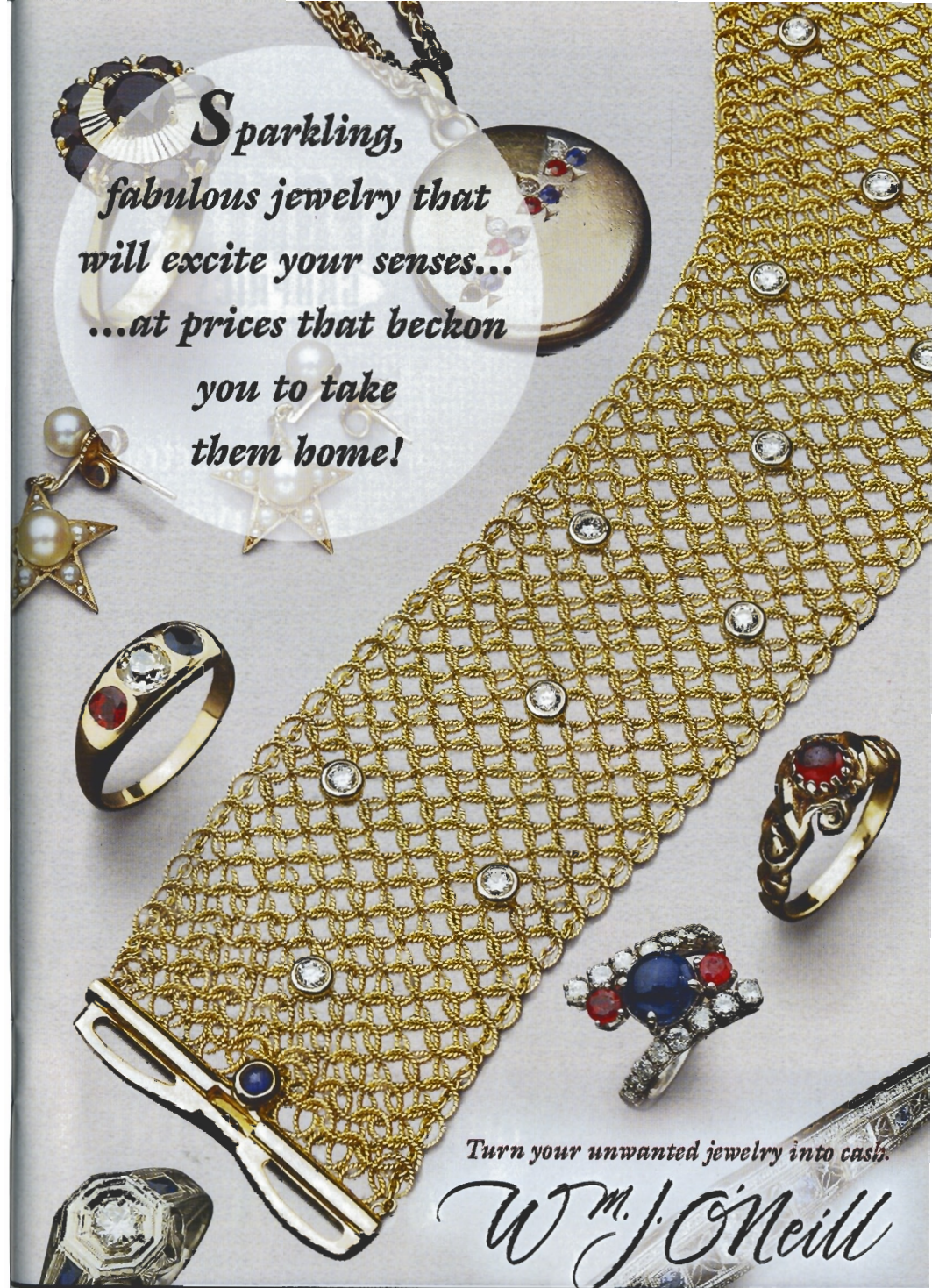
GATEWAY ACTING SCHOOL

LEARN FROM THE PROFESSIONALS!

286-9014



*Sparkling,
fabulous jewelry that
will excite your senses...
...at prices that beckon
you to take
them home!*



Turn your unwanted jewelry into cash.

Wm. J. O'Neill

Sales Exchange Co., Inc. • Jewelers and Collateral Loanbrokers

One East Main St., Patchogue • 631.289.9899

Mention this ad for 10% discount on purchase

CREATIVE SERVICES

- Graphic Design
- Website Design
- Advertising
- Logo Design
- Corporate Identity
- Illustration
- Copywriting
- Proofreading
- Photography

PRE-PRESS SERVICES

- Digital Scanning
- Photo Retouching
- Color Correction
- Color Separations
- Digital Imposition
- Film Output
- Color Proofing

PRINTING and PRODUCTION SERVICES

- 1-5 Color Printing
- Collating
- Folding
- Saddle Stitching
- Perfect Binding
- GBC and Wire-O Binding
- Hot Stamping
- Embossing
- Die Cutting
- Perforating and Scoring
- Hole Punching
- Numbering
- Wafer Sealing
- Shrink Wrapping
- Addressing and Mailing
- Delivery



offering a full spectrum of
printing and creative services



**QUALITY PRINTING &
GRAPHIC DESIGN**

56 Old Dock Road • Yaphank, NY 11980
Tel 631.345.2202 • Fax 631.345.0975

e-mail: searles@portjeff.net • www.searlesgraphics.com



presents

LUANN ARONSON

CHARLES GRAY

JOSEPH KOLINSKI

JOYE ROSS

BRUCE WINANT

in



Book by
TERRENCE McNALLY

Lyrics by
STEPHEN FLAHERTY



Music by
LYNN AHRENS

Based on
"Ragtime"
by E. L. Doctorow

with

TOMMY CARROLL
DANIELLE LANGLOIS
ANDRE WARD

STEVE HASSMER
DARREN RUSSELL
TONY WICHOWSKI

ANITA HOLLANDER
ALLAN SNYDER
AURELIA WILLIAMS

Producer
PAUL ALLAN

Associate Producer
JEFF BELLANTE

General Manager
GALE EDWARDS

Casting Director
STANLEY SCHORR

Production Stage Manager
MARIBETH HUNTER

Assistant Company Manager
CHRIS L. BUTTERFIELD

Lighting Design
DOUG HARRY

Sound Design
GREG REIF

Costume Coordinator
MARIANNE DOMINY

Choreography
LAURIE BRONGO

Musical Direction
JEFFREY BUCHSBAUM

Directed by
LYNNETTE BARKLEY

Ragtime is presented through special arrangement with and all authorized performance materials are supplied by Music Theatre International, 421 West 54th Street, New York, NY 10019.

SYNOPSIS OF SCENES AND MUSICAL NUMBERS

ACT I

Prologue
 "Ragtime" Full Company

Scene 1: DECK OF A SHIP
 "Goodbye My Love" Mother

Scene 2: AT SEA
 "Journey On" Father, Tateh, Mother

Scene 3: VAUDEVILLE THEATRE
 "Crime of the Century" Evelyn, Younger Brother, Ensemble

Scene 4: OUTSIDE THE THEATRE

Scene 5: GARDEN, NEW ROCHELLE
 "What Kind of Woman?" Mother

Scene 6: ELLIS ISLAND
 "America/Success" Tateh, Immigrants

Scene 7: STREETS OF THE LOWER EAST SIDE

Scene 8: STREETS OF THE LOWER EAST SIDE (CHANGE OF SEASON)
 "Success" Reprise Tareh, Girl, Emma, Immigrants

Scene 9: HARLEM (THE TEMPO CLUB)
 "Gettin' Ready Rag" Coalhouse, People of Harlem

Scene 10: HENRY FORD'S ASSEMBLY LINE
 "Henry Ford" Henry Ford, Ensemble

Scene 11: TROLLEY STOP IN NEW ROCHELLE
 "Nothing Like the City" Mother, Tateh, Boy, Girl

Scene 12: ROAD NEAR EMERALD ISLE FIREHOUSE

Scene 13: HOUSE IN NEW ROCHELLE
 "Your Daddy's Son" Sarah
 "The Courtship" Sarah, Mother, Boy, Grandfather, Younger Brother, Coalhouse

Scene 14: HOUSE IN NEW ROCHELLE (LATER)
 "New Music" Father, Mother, Family, Coalhouse, Sarah

Scene 15: HILLSIDE IN THE COUNTRY
 "Wheels of a Dream" Coalhouse, Sarah

Scene 16: THE MILL/UNION SQUARE
 "The Night that Goldman Spoke at Union Square" Tateh, Emma, Younger Brother, Strikers, Police, Guards

Scene 17: STRIKE LOCATION, LAURENCE, MA
 "Gliding" Tateh

Scene 18: ON THE ROAD, NEW ROCHELLE
 "Trashing of the Car" Coalhouse, Sarah, Willie Conklin, Firemen, Booker T. Washington

Scene 19: VARIOUS LOCATIONS IN THE CITY
 "Justice" Coalhouse, Mother, Father, Younger Brother, Sarah, Bureaucrats, People of Harlem, Ensemble

Scene 20: VICE PRESIDENTIAL CAMPAIGN (BACK OF A TRAIN)
 "President" Sarah

Scene 21: VARIOUS PARTS OF THE CITY
 "Till We Reach That Day" Coalhouse, Sarah's Friend, Full Company

INTERMISSION

ACT II

Entr'Acte Orchestra

Prologue
 "Wheels of a Dream" Reprise Coalhouse

Scene 2: STREETS OF NEW YORK
 "Coalhouse Demands" Mother, Father, Boy, Grandfather, Willie, Younger Brother, Coalhouse, Ensemble

Scene 3: HOUSE IN NEW ROCHELLE

Scene 4: BALLPARK
 "What a Game" Father, Boy, Fans

Scene 5: HOUSE IN NEW ROCHELLE
 "Atlantic City" Father, Mother, Evelyn, Houdini

Scene 6: ATLANTIC CITY BOARDWALK
 "Atlantic City" Continued Mother, Tateh, Boy, Girl, Evelyn, Houdini
 "Nothing Like the City" Reprise Mother, Tateh
 "Buffalo Nickel" Tateh

Scene 7: ATLANTIC CITY BOARDWALK
 "Our Children" Mother, Tateh

Scene 8: STREET IN HARLEM
 "Sarah Brown Eyes" Coalhouse, Sarah, Dance couple

Scene 9: COALHOUSE'S HIDEOUT

Scene 10: ATLANTIC CITY BOARDWALK
 "Back to Before" Mother, Women's Chorus

Scene 11: OUTSIDE MORGAN LIBRARY
 "Look What You've Done" Booker T. Washington

Scene 12: MORGAN LIBRARY, INSIDE/OUTSIDE
 "Make Them Hear You" Coalhouse

Epilogue Full Company

Before or After The Show Late Night Dinner • Dessert and Coffee

*All Baking
 Done On
 Premises*

*Breakfast,
 Lunch and
 Dinner*



*Open 7 Days
 6:00 AM - 2:00 AM*

Daily Specials

ROYAL OAK

Diner - Restaurant

Station Road and Sunrise Highway - Bellport, New York 11713

TEL. (631) 286-5757

CAST OF CHARACTERS

(in Alphabetical Order)

| | |
|---------------------------|---|
| Mother..... | LUANN ARONSON* |
| Little Girl..... | KATHERINE BARRY |
| Grandfather..... | TOMMY CARROLL |
| Willie Conklin..... | DARREN RUSSELL |
| Coalhouse Walker Jr..... | CHARLES GRAY* |
| Houdini..... | STEVE HASSMER |
| Emma Goldman..... | ANITA HOLLANDER* |
| Father..... | JOSEPH KOLINSKI* |
| Evelyn Nesbit..... | DANIELLE LANGLOIS |
| J. P. Morgan..... | LARRY PICARD |
| Little Boy..... | LOUIE RINALDI |
| Sarah..... | JOYE ROSS* |
| Younger Brother..... | ALLAN SNYDER* |
| Booker T. Washington..... | ANDRE WARD* |
| Henry Ford..... | TONY WICHOWSKI* |
| Sarah's Friend..... | AURELIA WILLIAMS* |
| Tateh..... | BRUCE WINANT* |
| Ensemble..... | STEPHEN CARR, ALLEN CHRISTOPHER, ALENA GERST, STEVE HASSMER, ANITA HOLLANDER*, DANIELLE LANGLOIS, DANIELLE J. LONG, VASTHY E. MOMPOINT, LARRY PICARD, JULIE REIBER, FABIOLA REIS, NICK SANCHEZ, CHAD SUITTS, JESSE SULLIVAN, LESLEE WARREN, KELLY WATERS, WILLIS WHITE |

UNDERSTUDIES

Understudies never substitute for listed players unless a specific announcement is made at the time of the performance.

| | |
|----------------------------|-------------------|
| Younger Brother..... | STEPHEN CARR |
| Emma Goldman..... | ALENA GERST |
| Booker T. Washington..... | NICK SANCHEZ |
| Sarah's Friend..... | DANIELLE J. LONG |
| Mother, Evelyn Nesbit..... | JULIE REIBER |
| Coalhouse Walker Jr..... | ANDRE WARD* |
| Father/Tateh..... | TONY WICHOWSKI* |
| Sarah..... | AURELIA WILLIAMS* |

THE ORCHESTRA

| | |
|-------------------------|---------------------------|
| Conductor/Keyboard..... | JEFFREY BUCHSBAUM |
| Keyboards..... | JEFF HOFFMAN |
| Violin..... | MARNI HARRIS |
| Reeds..... | CHAD SMITH, LARRY WOODALL |
| Trumpet/Flugelhorn..... | WALTER HERTMAN |
| Trombone..... | DIANE HOFFMAN |
| Percussion..... | MIA EATON |

ssdc

The Director/Choreographer is a member of the Society of Stage Directors and Choreographers, Inc., an independent national labor union.



*Actors employed in this production are members of Actors' Equity Association, the union of Professional Actors and Stage Managers in the United States.



The Musicians employed in this production are members of the American Federation of Musicians.

Playbill Designed and Printed by Searles Graphics, Inc.

WHO'S WHO...

LUANN ARONSON (*Mother*) is very happy to be returning to Gateway where she was last seen as Marian in *The Music Man*. She played the role of Christine in the Broadway production of *The Phantom of the Opera*, and toured the world in the internationally acclaimed production presented by Livent. Luann performed as a featured soloist in *The Music of Andrew Lloyd Webber* at Radio City Music Hall. At Andrew Lloyd Webber's annual Sydmonon Festival in England. She originated the role of Betty Schaefer in the workshop production of *Sunset Boulevard*. Regional credits include: Sharon in *Master Class* with the Denver Center Theatre Company and the Arizona Theatre Company; Laurey in *Oklahoma!*; Aldonza in *Man of La Mancha*; Guenevere in *Camelot*, Anna in *The King & I* and a tour of the Far East as Maria in *The Sound of Music*. Luann's concert career includes performances with the Seattle, Colorado, Grand Rapids Symphonies and the Chicago Symphony Orchestra for whom she was the guest soloist for their 2000 New Year's Eve Gala Concert.

KATHERINE BARRY (*Little Girl*) is proud to be part of her second Gateway production. Last summer Katherine played Jane Banks (*Mary Poppins*) here. Other past credits include Young Kim Ravenal (*Showboat*), Bielke (*Fiddler on the Roof*), Gretl (*Sound of Music*), and as orphan (*Annie*) as well as roles in *Children of Eden*, *Jesus Christ Superstar*, and several children's theatre productions. When not performing, Katherine enjoys swimming, writing stories and poetry, and playing with her pet hamster "Kitty". Katherine is a student at The Academy of St. Joseph and at the Gateway Acting School, and she recently celebrated her 10th birthday. Thank you to everyone at Gateway for such an exciting opportunity.

STEPHEN CARR (*Ensemble/Younger Brother us*) is pleased to be returning to Gateway, after being decapitated nightly in last season's production of *The Scarlet Pimpernel*. Since that time he has been covering the roles of King Herod and Peter in the European Tour of *Jesus Christ Superstar*. A two-time winner of the Rosa Ponselle Vocal Competition's Silver Rose Award, he performed with fellow laureates at Carnegie Hall in 1996, and more recently recorded the role of Silas in *Naughty Marietta* for the Newport Classics label. Other past roles include Archibald in *The Secret Garden*, Bazzard in

The Mystery of Edwin Drood (College Light Opera) Leo in *Parade*, Ernst in Matthew Ryan's production of *Cabaret* (Sir Jack Lyons Theatre) Bunthorne in *Patience*, Jack in *Into the Woods* (Eastman Opera Theater) Mordred in *Camelot*, and Koko in *The Mikado* (Ohio Light Opera.) Stephen is a graduate of the Eastman School of Music and the Royal Academy of Music, London.

TOMMY CARROLL (*Grandfather*) has appeared on the Gateway stage in *Showboat*, *Fiddler on the Roof*, and the world premiere of *Yankee Doodle Dandy*. He has appeared on TV and in commercials. Some regional favorites include *Da, ...Drood*, *Macbeth*, *As You Like It*, *A Few Good Men*, *Me And My Girl*, *Meet Me in St. Louis*, *Here's Love*, *Anything Goes*, *Gypsy*, *The Weir*, and Paddy Finnegan in Off B'way's *Finnegan's Farewell*.

ALLEN CHRISTOPHER (*Ensemble*) is from Clinton, Maryland and has been in the New York area for four years. He is thankful and fortunate to make his debut at the Gateway Playhouse in *Ragtime*. Most recently, he starred in *Let Freedom Sing* at the Bristol Riverside Theatre. Also, he played Simon Zealotes in *Jesus Christ Superstar* and played John and Pilate in an original work entitled, *No Greater Love*. Abroad, he has toured Europe with the Glory Gospel Singers, and twice-toured South America with the Great Men of Gospel and the Convent Avenue Church Inspirational Ensemble. This year, Allen achieved one of his lifelong dreams by singing at Carnegie Hall. He thanks his parents, Lyn and Jackie, and brother, Greg for their support and love. He thanks God each day for the precious Gift of Song by using it to bring JOY not only to his heart, but to anyone who may need to bridge the obstacles in their lives—Matthew 5:16.

DARREN RUSSELL (*Willie Conklin*) made his Gateway Playhouse debut in *Titanic* as the Major, and returned in *Jekyll and Hyde* as the Bishop. He is pleased to be back to perform in *Ragtime*. Other regional musical theatre roles include Simon Stricke (*Jekyll and Hyde*), Curley (*Oklahoma!*), Lancelot (*Camelot*), Emile de Becque (*South Pacific*), Captain von Trapp (*The Sound of Music*), Padre (*Man of La Mancha*), and Lun Tha (*The King and I*). Opera credits include *Carmen*, *Pagliacci*, *Othello*, *Tales of Hoffman*, *The Medium*, and *Rachel*. Symphonic

SPOTLIGHT ON AUDITIONING

As Long Island's only professional musical theater, Gateway Playhouse conducts its auditions just like those on Broadway. Casting Director Stanley Schorr sends out a "breakdown" - a list of characters' qualities and requirements for all roles except chorus - to New York-based agencies franchised by Actors' Equity. The agents then submit headshots and resumes of the clients they feel are most suited for the roles. Approximately 500 actors were submitted this way for *Ragtime*, and Schorr narrowed this down to about 100. Directors for Gateway's shows, most of whom are Manhattan-based members of the SSDC (Society Of Stage Directors and Choreographers) who have extensive experience directing for regional theaters, and the Musical Directors will also have ideas for casting, and will recommend actors they know to Schorr. Audition dates are coordinated, agents are called and appointments for preliminary auditions are set up for their clients who are available for both audition and the project. "As an actor myself, I know it can be very stressful if you walk in to an audition and no one talks to you. When I'm running a call, I try to make it very friendly, warm and open, so they can come in and just do what they do," said Schorr, "If they are relaxed and able to show off their best, it's easier for me and it's more fun for everybody." The Casting Director, Director, Musical Director and Producer will all have telephone discussions about the roles and how they see them, to develop a common vision about the show. "It really helps the whole 'creative thing' when all these people are there for the final callback, too" said Schorr, "Someone will see something in a person you didn't notice, something you wouldn't even have thought of on your own."

Two other types of auditions are scheduled besides the agency submissions; the EPA (Equity Principal Audition) which is for actors who belong to Actors' Equity Association but may have no agent, and the Non Equity Open Call to which any actor may come. And here's where the checkbook gets a workout - auditions are an expensive proposition! Gateway rents space to hold the auditions at Chelsea Studios or some other Equity approved audition space in Manhattan. Equity also supplies a monitor. A professional, union accompanist must be hired. For dance calls and callbacks, a choreographer is hired. Because of all the scheduling and expense, actors unable to attend the audition are usually out of luck unless a later audition needs to be scheduled.

The Non Equity Open Call is perhaps the most interesting (and exhausting) of all the auditions, since almost anyone can attend! More than 500 people attended the *Ragtime* open call, and about half were auditioned. Usually these are talented people fresh out of colleges like Tisch, Carnegie Mellon, Yale, Boston Conservatory and CCM who have little or no professional experience or representation. When this many people turn out for a call, the Casting Director first has to "type" them, lining them up in rows of 20 to look at pictures, resumes, credits and observe their presence. He will pick which actors he wants to hear out of each row, and they will be brought in one at a time to sing eight or sixteen bars of music. The Casting Director has to be focused enough to whittle down the total to 25-30 people who will go to Chorus callback, where approximately 12 will be selected after the Musical Director asks them to sing again. They may be asked to sing a specific chorus solo in the show or if dance is required they may have to change into dance clothes and follow a combination. For some shows, such as *Phantom* or *Show Boat*, vocal requirements are most important. For last year's *West Side Story*, the actors came to an open dance call, and the ones remaining after all the cuts, then had to sing.



After the initial round of auditions, the Casting Director decides who should come to Callbacks. About 8-10 actors per role will be asked to come to this second audition. They will be looked at more closely for their singing ability, quality for the role, and chemistry with other actors. "I believe that the choice of material is so important. It can be easy for an actor to get bored with their material. But when you are auditioning, it has to be the song that is your ace" said Schorr. "And I think there is often a problem with actors coming in for roles they are not right for, the actor should do their research." Headshots and resumes of actors who are not chosen for roles will be filed for consideration in future shows. As soon as the callback audition is completed, the staff holds a Casting Meeting. They will list their first, second, and third choices for each role. Usually there is agreement at the meeting but there have been some tense moments when someone has felt very strongly about who should be cast! Sometimes the staff realizes they are settling and not really happy with their choice, which forces another audition, which will likely include some actors who were unavailable for the previous audition.

Once the final decisions are made, the Company Manager calls the actors, usually through their agents, to make offers. *Ragtime's* casting is now finished, right? Wrong! "Casting is never over 'til the show closes," said Associate Producer Jeff Bellante, who in the early 1990's had the complicated job of hiring - sometimes actors turn down the offer because they have received another that gives them more money or more weeks of work. Sometimes an actor gets sick, or injured, sometimes they get an important show in the middle of the run (like when Cyndi Neal playing the title role in *Evita* got *Show Boat* on Broadway) and have to be replaced. Meantime, Schorr is finalizing the cast for *Annie Get Your Gun* and going through headshots for *Jesus Christ Superstar*.

By opening night, between the directors' choices, agents' submissions, EPA and open calls, more than 1200 actors have been considered for the 30 roles in Gateway Playhouse's production of *Ragtime*.

Oratorio credits include works by Mendelsohn, Bach, Saint-Seán, Verdi, Beethoven, Brahms, and Handel. He lives in Tennessee and offers a warm "Howdy y'all", inviting you to sit back and enjoy the music and art of *Ragtime*.

ALENA GERST (*Ensemble*) recently made her debut at Gateway Playhouse in *Fiddler on the Roof*, and is thrilled to be in *Ragtime*. Favorite regional credits include *A Grand Night for Singing* at Barter Theatre, *Nonsense* (Sr. Robert Anne) and *Baby* (Pam) at Downstairs Cabaret Theatre, *Razzle Dazzle* at Carousel Dinner Theatre, *Starting Here, Starting Now* and *Working* at Arizona TheatreWorks, and *The Tempest* and *Twelfth Night* at Grand Canyon Shakespeare Festival. She has also been seen on *One Life to Live* and with the New Amsterdam Ballet. Alena is a psychology graduate from Northern Arizona University. Hi Mom!

CHARLES GRAY (*Coalhouse Walker Jr.*) hails from Annapolis, Maryland, and has appeared in numerous venues from Royal Albert Hall to Carnegie Hall. On Broadway he appeared as Teen Angel in *Grease*; Most recently Off-Broadway in *Bat Boy, The Musical*; Regionally as the soloist in *Riverdance, The Show*, Matthew Henson in *90 North* at the Kennedy Center, Judah in *Joseph and the Amazing...*, Castrone in *Volpone* at the Shakespeare Theater in Washington D.C., Eat Moe in *Five Guys Named Moe* and was nominated for the Denver Drama Critics Award for his performance in *A Brief History of White Music*. In addition to numerous voice-overs and commercials Charles has also recorded singles for Eight Ball Records, NY. He would like to thank God for the continued gift of life and the opportunities that come with it.

STEVE HASSMER (*Houdini*) is excited to be making his "Gateway Debut" with the cast of *Ragtime*. Most recently, he performed throughout the country with *My Fair Lady*. Other credits include: *Damn Yankees* (Joe Hardy), *Joseph and the Amazing...* (Joseph), and *Seven Brides for Seven Brothers* (Daniel). Steve would like to thank his family and friends for sticking by him and God for giving him another opportunity to be on stage.

ANITA HOLLANDER (*Emma Goldman! Ensemble*) has premiered new works of composers and playwrights at Carnegie Hall, the Village Gate, Playwrights Horizons, and New York Shakespeare Festival, where she sang original work of Philip Glass. She received a Helen Hayes Award nomination for Outstanding Lead Actress in a Musical for the Olney Theatre premiere of *The Fifth Season* and originated the title role in the award-winning play *Pretty Good Time* at the Kennedy Center in Washington. Her critically-acclaimed original one-woman musical *Still Standing* was presented at the White House, Off-Broadway and on CD (Amazon.com). Other favorite roles are Meg in *Damn Yankees* (Downtown Cabaret Theatre), Fraulcin Schneider in *Cabaret* (Gretna Theatre), and *Shirley Valentine* (Summerfun Theatre). On TV she's appeared on *As The World Turns, The Sopranos, Oz*, and *All My Children* with husband and daughter, Paul and Holland Hamilton.

JOSEPH KOLINSKI (*Father*) has, over the past 22 years, loaned his talents to some of Broadway's biggest hits, among them; *Titanic, Les Miserables, Sunday in the Park with George, The Human Comedy, Brigadoon* and *A Christmas Carol*. He's well acquainted with The Gateway Playhouse, hav-

ing reopened the Patchogue Theatre as Captain E. J. Smith in Gateway's *Titanic*. At the Kennedy Center, Leonard Bernstein selected Mr. Kolinski to be the celebrant in his *Mass*, broadcast live on PBS. Soap watchers will remember him as the evil Prince Roland of Mendora on ABC's *One Life to Live*.

DANIELLE LANGLOIS (*Evelyn Nesbit*) Since her last appearance at Gateway, Danielle spent a year as a Resident Artist at the John F. Kennedy Center for the Performing Arts where she created new works with area playwrights, understudied national tours and taught Shakespeare in the D. C. schools. Recent credits include: *Titanic* (Gateway), *Jose Rivera's Sonnets for an Old Century* (World Premiere, Kennedy Center), and the Independent Film *Ultrachrist!* Danielle is a graduate of the North Carolina School of the Arts. 1-4-3.

DANIELLE J. LONG (*Ensemble & Sarah's friend Understudy*) is a recent graduate of the North Carolina School of the Arts. Some highlights since graduation include performing as Puck in *A Midsummer Night's Dream*, touring nationally with the Chamber Repertory Theater of Boston, starring in the world premiere of *Clary's Exodus*, among others. Danielle is delighted to be a part of the *Ragtime* cast at Gateway Playhouse and gives honour to the Father for the opportunity.

VASTHY E. MOMPOINT (*Ensemble*) is excited to join the Gateway family after closing the national tour of *Ragtime!* She is thrilled to do this beautiful show again, and would like to thank her family, friends, and Jerold.

LARRY PICARD (*J.P. Morgan! Ensemble*) Larry's most recent roles include Isador Straus in the musi-

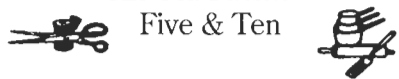
cal *Titanic* and the role of Senex in *A Funny Thing Happened on the Way to the Forum*, both at the Fireside Theatre in Wisconsin, Calman Jacoby in *The Open Gate*, a musical adaptation of an Isaac Bashevis Singer novel, at the Theater for the New City and *The Ship That Lies at the Bottom*, a 12-minute opera by composer/mystery writer Keith Snyder (which was performed on the ship that did lie at the bottom). Recording projects include a chamber opera, *The Birth of George and Voices From the Shadow*, songs written on poetry from the Nazi concentration camps and Jewish ghettos. You have no idea how delighted Larry is to be working at Gateway Playhouse.

JULIE REIBER (*Ensemble, ul's Mother & Evelyn*) is thrilled to be a part of this amazing and powerful piece of theatre. She just recently returned from the national tour of *Rent* and will be playing Ariel in *Footloose* at Ogunquit Playhouse in August. Some favorite performances include *Songs for a New World, Sweeney Todd*, and *SEX! The Musical*. All love and thanks go out to my amazing support system of family and friends. And to Sabs—thanks for the clarity!

FABIOLA REIS (*Ensemble*) has put her Master's degree in Musical Theatre on hold at NYU to work in the real world! Ms. Reis was last seen in Gateway Playhouse's productions of *The Scarlet*

THE VARIETY MART

An Old Fashion
Five & Ten



138 Main Street
Bellport, New York 11713

631-286-2210

THE BELLPORT

Steps away from the Gateway Playhouse



New York Times Review

159 South Country Road, Bellport, New York 11713
(631) 286-7550

Come for Dessert at

Carla Marla's Ice Cream Parlor

Gourmet Ice Cream • Homemade Baked Goods
Old Fashion Candy • Italian Ices
Cappuccino • Coffee & Much More

OUTSIDE SEATING! • NOW SERVING YOGURT

8 Bellport Lane • Bellport • NY • 11713 • 631-286-0500
1/2 Price Cones with your ticket stub!!!



FRANK R. EGAN, D.D.S., P.C.

Certified, American Board of Orthodontics

Hospital Road Professional Center
250 Patchogue-Yaphank Road - Suite 14
East Patchogue, NY 11772 (631) 289-3990

www.TeethOnTheMove.com

THE BANK OF NEW YORK

LONG ISLAND REGION

24-hour ATM

Patricia Kelly, AVP

32 Station Road, Bellport,
New York 11713

(631) 286-4200

Member FDIC 1986 The Bank of New York

LYONS FUEL OIL CO. INC.

24 Hr.
Service

est. 1934

Automatic
Delivery

23 Station Road • Bellport, New York 11713
Phone (631) 286-0395 • Fax (631) 286-0396

CAVANAUGH'S

"Let's Have Fun"

Est. 1986

◆ New Smoke-Free Dining Room ◆

Serving Lunch Daily Starting at 11:30

Dinner Served Every Night

Dining Room Open Sunday - Thursday Till 11 PM

Friday And Saturday Till 12 Midnight

DINING SPECIALS

Mondays - 2 For 1 Chicken Wings

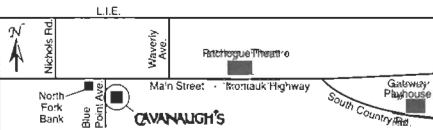
Tuesdays - 20 Oz. Porterhouse \$11.99

Thursdays - Prime Rib \$11.99

Kitchen Open

Sunday - Thursday Till 12 Midnight

Friday and Saturday Till 2 AM • 19 TVs - Quick Draw



255 Blue Point Avenue, Blue Point
631-363-2666

Donato's

RESTAURANT
Fine Italian Cuisine



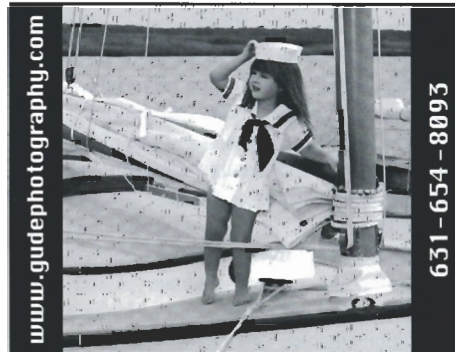
114 W. MAIN ST., PATCHOGUE

Open at 4:30 pm - Closed Tuesdays

1+1/2 blocks West of No. Ocean Av

(631) 447-7766

*Bring your 2002 theater ticket stub
for a complimentary glass of wine*



BROADWAY IN YOUR BACKYARD

Land- ing a Broadway show, a big dream for most performers, does not mean that they will then stay on Broadway for the remainder of their career. The acting world is not structured as a linear road to the top like the corporate world. Most actors will continue to work in regional theaters like Gateway Playhouse and go out on tours, before and after a Broadway gig, making the structure more like a revolving door. "Musical theater is my passion, but you have to be ready to do other things. How many shows did Bernadette Peters have? Five, over twenty years! Unfortunately, it is not a constant thing," said Joye Ross, a soloist at Lincoln Center at 16, who aspired to the role of Sarah to such a degree that she learned the entire part on her own, which has ultimately paid off for her; she has been cast in two regional productions of *Ragtime* this year.

The chance to work is what is important, and often a regional production or tour can offer a more challenging opportunity than was offered by a Broadway show. Charles Gray (Coalhouse Walker) who appeared on Broadway in *Grease* as the Teen Angel, said "This is the most I've ever said in one show, and the most I've ever sung in one show." Joseph Kolinski (Father) whose Broadway credits include *Titanic*, *A Christmas Carol*, *Les Miserables*, and *Sunday In The Park With George*, said, "Pretty much every actor knows getting the job is the job, then you get to indulge your passion. Everything is eventually going to close, and you don't know where the next right part for you is going to be."

Opportunities often conflict, and a role can open up when an actor is otherwise committed. "You can't dance with all the girls at the same time," said Kolinski. Gray said, "Coalhouse is a role I've always wanted to do. When I was in [the tour of] *Riverdance* I was approached to do *Ragtime* but it was just about to close on Broadway. And I didn't want to go back out on tour since I was ending about five years on the road." Luann Aronson (Mother), who played Christine on Broadway in *Phantom Of The Opera* agrees, "It's the kind of job that really teaches you about how to be OK with doing your best, to keep a positive attitude and to trust that the right jobs come. I just had a conflict where I couldn't get out of rehearsal to go to an audition. You are confronted with this all the time. You have to believe it was not meant to be."

Broadway has become a big business, and it can be hard for an actor to get an audition for a part if the director can't envision him in it, or for political reasons, or because the producers want a star for financial reasons. "After *Saturday Night Fever*, where I was featured as a dancer, people would say, 'you don't sing, do you' " said André Ward (Booker T. Washington), who could sing before he could walk, growing up in a family of gospel recording artists. Bruce Winant (Tateh), spent 11 years on Broadway in *Ragtime*, *Chicago*, *Miss Saigon*, *Les Miserables* and *My Favorite Year*, said, "I absolutely could not get seen for *Ragtime* until I got bold and called Steve Flaherty who I worked with on *My Favorite Year*."

Still, the experience of being on Broadway is magical. Winant said, "The opening night of *Miss Saigon* was one of the most exciting times in my life. The show was the biggest thing to hit New York since *Les Miz*" Kolinski said, "For *Brigadoon*, I had gone through all calls, and then sang a whole song. The director came up to me and said 'I'm not sending you on to the dance.' Then he said 'Because I don't want the choreographer to tell me I can't have you.' He totally manipulated me, but it was wonderful! It was just wonderful, getting my first Broadway gig." And in the end, performing is what all these actors agreed was what kept them in an unpredictable and insecure business. Ward said, "Being on stage, it is a need, it's like a hunger. My family says 'you were born ready to go' because it's all I ever talked about, performing. I used to do TV shows at recess, nobody got to play football or soccer, we were doing my soap every day." Gray probably put it best, though, when he said, "My grandmother said it is a sin against God to have a voice like that and not use it. It can't be a mistake that you can sing that way, so to not share it is wrong."



is proud to support the
GATEWAY PLAYHOUSE

HAVE A GREAT SEASON!

"The Most Convenient Bank in Patchogue"

877-694-9111

116 EAST MAIN STREET

CHURCH STREET (2 car Drive-up)

392 EAST MAIN STREET

Member FDIC

Pimpernel and *Jekyll and Hyde*. Prior to that, she was seen around the country in Troika Entertainment's productions of *The Music of Andrew Lloyd Webber*, guest starring Michael Bolton and Petula Clark. Favorite roles include Pamina in Mozart's *The Magic Flute*, Kate in *Kiss Me Kate*, Mabel in *Pirates of Penzance* and Sylvia in A.R. Gurney's *Sylvia*. Ms. Reis also had the privilege to work in The Little Orchestra's production of *Babes in Toyland* at Avery Fisher Hall last fall. Many thanks once again to God, my family and friends, and Gateway!!!

LOUIE RINALDI (*Little Boy*) is overjoyed to be making his debut with the Gateway Playhouse! At only 10 years old, Louie has performed for the past three years with the Backyard Theatre, studying under the direction of Virginia Messiano. He has also been attending the Gateway Acting School for the last two years and is working on his vocal skills with Rebecca Richardson, of Jimmy Osborne Music. Louie is a student at East Moriches School, and will be entering the fifth grade in the fall. When not on stage or in school, Louie likes to perform magic

and read mysteries. He would like to thank all of his teachers and especially his family for helping him achieve his dreams.

JOYE ROSS (*Sarah*) "First I give all praise and honor to God from whom all blessings flow"! Joye was born and raised in Queens, N.Y. and is a graduate of the American Musical & Dramatic Academy. From doing solo work at Lincoln Center and Cabaret Clubs in N.Y.C. to the Alte Oper in Germany, Ms. Ross has been all over. Some of her favorite credits include leads in *Smokey Joe's Cafe* with Gladys Knight, *Beehive*, *Ain't Misbehavin'*, *She Loves Me*, *Once on this Island* and *Ball*. "I wish to send a special thanks to all of my family and friends for their continuing love and support. I dedicate each and every performance to my Mommy and L.P."

NICK SANCHEZ (*Ensemble*) is thrilled to be returning to the Gateway Playhouse for his 7th year. He was most recently seen playing the lead role in *Six Degrees of Separation* (Paul) at Marymount Manhattan College. He also appeared in the New York premiere of Wendy Kesselman's *The Executioner's Daughter* (Pierrot). Recent Gateway mainstage credits include *Showboat*, *A Chorus Line* (u/s Richie), *Big!*, *West Side Story*, and *Smokey Joe's Cafe* (u/s Adrian). He also performed in several children's theater productions here, including *Snow White*, *Pochahontas*, *Toy Factory*, *The Wizard of Oz*, *Cinderella*, *Winnie the Pooh*, and *Alice in Wonderland*. Other recent theater credits: *Carousel* (Carnival Boy), *Best Foot Forward* (Goofy), *A Chorus Line* (Paul), *The Wiz* (Tinman), *Once on this Island* (Daniel). Currently, he is working on a workshop with Barbara Simon and Charles Strouse.

ALLAN SNYDER (*Younger Brother*) is thrilled to be making his Gateway debut in *Ragtime!* Favorite regional credits include *Oklahoma!* (Curly), *West Side Story* (Tony), and *Shenandoah* (James). Allan is also "Forever" *Plaid*, having performed the role of Smudge four times in four different states. In addition he has created leads in two Off-Off B'way musicals, *Sandcastles* and *The Children*. A native of California, Allan currently resides in New York City where he received a BFA in Drama from New York University. Thanks to my parents and everyone at Dulcinea Eisen!

CHAD SUITTS (*Ensemble*) has worked professionally in Chicago and LA for the past 7 years. Previous to coming to New York, Chad was working in LA on such productions as *Days of Our Lives* and Stephen Spielberg's new movie, *Minority Report*. In Chicago he worked on several films (*My Best Friend's Wedding*, *Hoodlums*), TV programs (*Early Edition*), and various plays and musicals (*Picasso at the Lapin Agile*, *Grease*, *The Secret Garden*, *Chess*, *Edward II*, *Side by Side by Sondheim*). Chad would like to send his love to all his friends from AMDA and NYC for all their support, both mental and physical.

JESSE SULLIVAN (*Ensemble*) is a recent graduate of the Hartt School, and is thrilled to be a part of the Gateway Playhouse for the first time. Some of his favorite roles include Joe Hardy in *Damn Yankees*, Marco in *Carnival*, and Noah Curry in *110 in the Shade*. He would like to thank God for giving him such supportive people in his life, especially his Mom, Dad, and Brooke.

ANDRE WARD (*Booker T. Washington*) is happy to be making his first appearance at Gateway Playhouse. Andre's most recent credits include *Kept* (World Premiere); *Cinderella* starring Eartha Kitt; and the original Broadway production of *Saturday Night Fever*. Andre has also enjoyed playing the roles of Judas in *Jesus Christ Superstar*, and Jacob in *La Cage Aux Folles*. He would like to give thanks to God, family, friends, and all those at Nicolosi and Company for their support.

LESLEE WARREN (*Ensemble*) has most recently been seen as Charlotte Cardoza in the National Tour of *Titanic*, other tours include *The King and I*. Leslee is a member of Spellbound Theatreworks in NYC and has performed in their productions of *The Last Session* (Vicki), *Twelfth Night* (Sebastian) and *Hair* (Dionne). Other NYC productions include *Panther Women* at The Henry Street Settlement and summer festivals at MCC and Expanded Arts. Regional productions include: *Little Shop of Horrors*, *Nunsense* and *Quilters*. Leslee is thankful for her family, friends and many blessings.

KELLY E. WATERS (*Ensemble*) is simply overjoyed to be starting her professional career with Gateway Playhouse. She is a graduate of Susquehanna University, where she received her B.A. in Musical

Theatre. Some of her favorite roles include: Adelaide in *Guys and Dolls*; Carrie Pipheridge in *Carousel*; Lady Macbeth in *Macbeth*; Jennifer Owens in *Babes In Arms*; and Madame Goldentrill in Mozart's *The Impresario*. Later this year, she will be performing in *A Fireside Christmas* at The Fireside Dinner Theatre in Fort Atkinson, WI. In 2000, she received the first place Musical Theatre award at the National Association of Teachers Singing competition. Kelly would especially like to thank all of her devoted friends and family for their continued love and support. It means the world! Grandpa, thanks for watching over me.

WILLIS WHITE (*Ensemble*), a native of Chicago, Illinois, is making his New York debut in this production. This past June, Willis received a BFA in Voice Performance, a Certificate in Musical Theatre, as well as a BA in Political Science from Northwestern University. His previous featured roles include Ritchie in *A Chorus Line*, Leading Player in *Pippin*, and Cain/Japheth in the Chicago premiere of *Children of Eden*.



On Tap Here
at Gateway



Clare Rose

"Distributors of
Fine Brewery
Fresh Products"



- Free Consults for Children
- Preventive early childhood treatment
- Clear and invisible braces available
- Major credit cards accepted
- Most insurances accepted
- Payment plans available

Fast Braces for
Great Smiles

Dennis Angelillo, DDS

1 Station Ct. (formerly 30 Station Rd.), Bellport

286-7651

Bellport CHOWDER HOUSE



An Eating and Drinking Tradition

FULL MENU

FULL BAR

Open Daily For Lunch and Dinner
Seven Days A Week

Sunday - Thursday till 11:00 p.m. Friday & Saturday till Midnight

SPECIALIZING IN FRESH LOCAL SEAFOOD
AT AFFORDABLE PRICES

*Before and After the Show You'll Want to Meet and Eat At
THE CHOWDER HOUSE*

TAKEOUT

CATERING

19 Bellport Lane • Bellport Village • 286-2343

WHO'S WHO ...

TONY WICHOWSKI (*Ford, us Father*) recently played Father on the national tour of *Ragtime*. Favorite roles include Julian Marsh (*42nd Street*), Colonel Ricci (*Passion*), and Harold Hill (*The Music Man*). Choral credits include Haydn *The Creation*, Brahms *Liebeslieder Waltzer* and Durufle *Requiem* all at Carnegie Hall. Tony has a BA in Music from California State University Chico.

AURELIA WILLIAMS (*Sarah's Friend, us Sarah*) is very excited to be returning to Gateway for the second time! Last summer she was featured in the smash hit *Smokey Joe's Cafe*. Other productions include Off B'way: *Pirates of Penzance*. Regional: *The Wiz, Nunsense, Reading Rainbow*. Tours: *Harlem Gospel Choir, Original U.S. Gospel Singers*. She is grateful for the support and love of her family and thanks God for his many blessings.

BRUCE WINANT (*Tateh*) is happy to return to Gateway, having last appeared in the 2000 season as Charlemagne in *Pippin*. Bruce has the distinction of being the second person ever to perform Tateh in *Ragtime*, having understudied and played the role in the original world premiere and Broadway companies. Bruce also appeared in the original Broadway casts of *Miss Saigon* (Capt. Shultz), *My Favorite Year* (King Kaiser) and the national tours of *Chicago* (Amos) and *Les Miserables* (Thenardier & Javert). Bruce recently returned from St. Petersburg, Russia, playing Orville Wright in a special presentation of the new Maltby/Shire musical, *Take Flight* for the Eugene O'Neill Theatre Center. On film Bruce can be heard as several characters in the recent animated hit, *Ice Age* and had roles in *Friends and Family, Mighty Aphrodite* and *Til There Was You*. On TV Bruce was a regular last year, on the short lived NBC series, *First Years* and will be seen this fall in the pilot

of the new HBO series, *Carnivale*. Guest appearances include, *The West Wing, Law & Order, Andersonville, Thirtysomething, Star Trek: The Next Generation, My So-Called Life* and *General Hospital*. With love to Kristin, Arden and Jayce.

PAUL ALLAN (*Producer Ragtime*) marks Paul's 136th production with Gateway. Having grown up in the theatrical family that started Gateway, Paul has been involved in theater from an early age. In addition to his work here, Paul co-founded a successful touring company mounting over 23 productions in countries as far away as Taiwan and Korea. He even spent some time "on the road" driving the rigs that haul the scenery and props, and as Technical Director. Paul has also been the show carpenter for several off-Broadway shows. Recently, Paul acted as consultant and advisor on the restoration and renovation of the Patchogue Theatre, which, under Gateway's control, reopened in 1998 with *Nutcracker On Ice* and was followed by over 150 shows, concerts, and other attractions. The venue is now under the control of Patchogue Village but Gateway still stages shows here several times each year, including *Millennium Nutcracker On Ice*, coming up this holiday season.

LYNNETTE BARKLEY (*Director*) is happy to be back at Gateway Playhouse after directing *Jekyll & Hyde*. Recently she has worked as Co-Creator/Director/Choreographer for Florida Stage's award winning original musical revues, *Beguiled Again & Puttin' on the Ritz* and *Mr. Abbott; A Broadway Legacy*. Other directing credits include Pope Theatre's *Moonshadow*, & *Voice of the Prairie*, American Stage's *Later Life* & Florida Studio Theatre's production of *Eubie!* Back in New York, Lynnette was an assistant to Tommy Tune on Broadway's *My One*

Swan Bakery

All Occasion Cakes

Guy Gagliano

The Official Bakery of Gateway Playhouse

15 South Country Rd., East Patchogue, NY 11772
(631) 475-9626

Irish Coffee



Pub

at

**Bellport
Country Club**

always open to
the public.

The favorite for
pre- and post-show
dining.

Conveniently located between
Gateway Playhouse and
Patchogue Theater on
SOUTH COUNTRY ROAD, in
BELLPORT VILLAGE

Available for groups and
small parties.

FOR RESERVATIONS
CALL

286-4227

Also visit

Irish Coffee



Pub

on CARLETON AVENUE
in EAST ISLIP

277-0007

WHO'S WHO ...

and Only. Off-Broadway, she directed *Leave It To Jane* and choreographed *Anything Cole*, *Gifts of the Magi*, & *The Road to Hollywood*. She and business partner Jeff Kalpak are co-owners of the New York Production Company, Barkley-Kalpak Associates.

JEFFREY BUCHSBAUM (*Musical Director*) is proud to report *Ragtime* marks his 11th production at Gateway Playhouse, including *Fiddler on the Roof*, *Phantom* and last season's *Jekyll & Hyde* and *The Scarlet Pimpernel*. Other recent credits include: *O. Henry's Lovers*, by Joe Dipietro and Michael Valenti; Off-Broadway productions of *Tallulah's Party* starring Tovah Feldshuh (Kaufman Theater), and Michael Valenti's *Song By Song* (West Bank); *The Skinflint* (Repertory Theatre of St. Louis); *A Chorus Line* (National/European Tours); Jacobs *Phantom of the Opera* (South American/European Tours); *Romance, Romance* (National Tour); *Song & Dance* (National Tour); conducting for Red Buttons (Regional Tour); keyboards for *Damn Yankees* starring Jerry Lewis (National Tour). Jeffrey is also a voice teacher and coach and has taught at Baruch, Middlesex and Mercer Colleges, and is presently teaching at New York University.

The Colony Shop
The Finest In Children's Wear



Christening and
Wedding
Attire for Children

32 West Main Street,
Patchogue
631-475-0070

WHO'S WHO ...

LAURIE BRONGO (*Choreographer*) is pleased to be returning for her second show at Gateway Playhouse. Last season she assisted Ms. Barkley on *Jekyll & Hyde The Musical* followed by a new production in February, at the Downtown Cabaret Theatre in Bridgeport. Recently, Laurie choreographed and co-directed an original revue, *Broadway Celebrates America*, that toured nationally. She will be heading north later this summer to choreograph *Carousel* at the Depor Theatre in Westport, N.Y.

MARIBETH HUNTER (*Production Stage Manager*) is happy to be returning to the Gateway Playhouse where she has stage managed many shows including *The Who's Tommy*, *The Scarlet Pimpernel*, *Jekyll & Hyde*, *Godspell*, and *The Odd Couple*. This year, Maribeth has also stage managed the opening numbers for the Broadway Cares/Equity Fights AIDS benefit *Gypsy of the Year* starring Gary Beech and Roger Bart and the Actor's Fund/Phyllis Neumann Health Initiative benefit *Nothing Like a Dame*, starring Chita Rivera. She has also worked with The American Repertory Theatre, American Music Theatre Festival, The Philadelphia Festival

Theatre for New Plays, The Philadelphia Drama Guild, The People's Light and Theatre Company, The Italian National Opera, and Illinois Kabuki Theatre. Maribeth met her husband, Chris, at Gateway in 1995. Their favorite production together is their 2 year old son, Christopher.

DOUG HARRY (*Lighting Designer*) is happy to be designing for Gateway again as it is taking his mind off England's loss to Brazil in the World Cup (WE WERE ROBBED!). Besides designing for Mohegan Sun Casino, General Motors and Six Flags Theme Parks, Doug's new company "Darkside Design" is also available for parties, weddings and bar mitzvah's.

GREG REIF (*Sound Designer/Engineer*) returns to Gateway for his fourth season as Sound Designer/Engineer. He returns from Miami, FL where he is the head audio engineer for the Coconut Grove Playhouse and does some other freelance design and engineer work. He holds a BFA from Emerson College in Sound Design and is heading back south in October for another season with the Coconut Grove Playhouse.

R. Nersesian Trucking, Inc.

Registered ICC Motor Carrier #163406

Since 1981

Ranked #1 Largest Volume Auto Transporter to Florida During 1999-2000 Season!
Long Island's Finest Insured Auto Transporters

Specializing in 3-day delivery service between NY/NJ & Florida

Friendly efficient service to simplify getting your vehicle where you want it,
when you want it... without any wear and tear!

Featuring new, open 10-car tractor trailers to transport your automobile.
Weekly scheduled round-trip service from early fall through late spring.



112 South Country Road, Suite 206, Bellport, NY 11713
Tel. (631) 286-9018 • Fax (631) 286-5433 • Website: www.rntrucking.com

South Country Inn

668 South Country Road, E. Patchogue

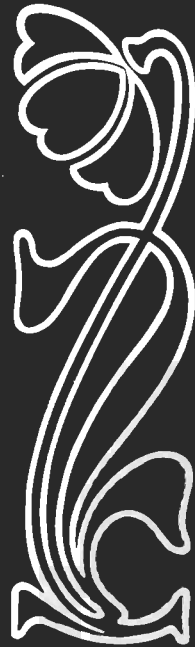
Fine Italian, continental food, early bird complete dinners at \$16.95 and up.

OPEN FOR LUNCH

Special attention to our theatre goers, parties & theatre groups welcome. Stop for dessert after the show.

We are a family run restaurant proud to serve the public for 20 years.

758-1919



Candy Confections for all occasions!



- Gourmet & Sugar Free Chocolates
- Home Made Ice Cream & Italian Ices
- Novelty & Nostalgic Candy
- Balloons • Gift Baskets & Trays
- Wedding & Party Favors

Bring in your ticket for a free small cone!
128 South Country Rd., Bellport • 286-6100

Morgan's Beach House Restaurant



Lunch & Dinner - Indoor/Outdoor
363 Grove Ave. Patchogue 631-758-3524
(closed Mondays)

Handcrafted jewelry our specialty!

BELLPORT JEWELERS

& EXCLUSIVE JMH CREATIONS

5 Bellport Lane, Bellport 286-7700

email@bellportgalleries.com www.bellportgalleries.com

We BUY: Gold, Diamonds, Coins & Stamps We Certify/Appraise: GIA trained, Members ASDA, Jewelers of America Numismatic Coin intake center for NGC, ANACS, PCGS

Come Visit! Our showroom is filled with beautiful handcrafted fine jewelry, sterling silver jewelry, new and vintage watches, coins, stamps, currency, antique decorative items for the home and much more!!!

Repairs on all jewelry & watches on premises

Bring in your ticket stub & receive **One FREE Watch Battery replacement**

Standard watches only/1 per customer

Open Wednesday - Sunday

ART COLEMAN

475-1733

878-2010

Family Owned and Operated For Over 50 Years

- Dedicated to Honest & Reliable Service
- Precast Cesspools Installed
- Portable Toilet Rentals

1 Chapel Avenue, East Patchogue, New York 11772



BAY STREET THEATRE

Long Wharf Sag Harbor

Box Office open daily 11am-6pm

631-725-9500

BLITHE SPIRIT



BLITHE SPIRIT
by Noël Coward

Widely considered Coward's funniest, most mature, and best-constructed work, BLITHE SPIRIT takes black comedy to new heights. A brilliant toast to human vice and folly!

JULY 16 - AUGUST 4

2002 Corporate Sponsor  **TARGET**



Celebrating the American Spirit

Saturday, July 27, 2002 • 6:30 pm
Long Wharf, Sag Harbor

Hors D'oeuvres - Cocktails
Dinner - Silent Auction

Live "Fantasy" Auction
with guest auctioneers including

Kim Cattrall, Marsha Mason
and Alan Alda

Dancing to the sounds of
The One and Only Tommy Dorsey Orchestra

For Information Call Julie Fitzgerald
Director of Development at 631-725-0818



Island Kitchens & Baths
60 West Main Street
Patchogue, NY 11772
631-447-1700
Fax: 631-447-1728
www.islandkitchens.com info@islandkitchens.com


WoodMade
BROOKHAVEN

Truck Sales & Leasing
Cassel
GMC TRUCKS
Authorized Dealer NEW & USED



1 800-758-5811
www.gmc.com
SALES • PARTS • SERVICE
GMC
WE ARE PROFESSIONAL GRADE™
550 N. Ocean Ave., Patchogue NY 11772
1/4 Mile N. Sunrise Hwy

America's Most Convenient Bank



Opening Summer 2002

- Totally FREE Checking FREE checks too!
- Seven-Day Branch Banking
Weekdays 7:30-8
Saturday 7:30-6
Sunday 11:00-4
OPEN
- America's Best Online Banking
FREE online banking at commerceonline.com

Visit your nearest branch, connect to commerceonline.com or call 1-888-751-9000.

Commerce Bank
America's Most Convenient Bank®
203+ offices throughout New York, New Jersey, Pennsylvania & Delaware
Garden City • Massapequa • Farmingville • Patchogue

Member FDIC First order of wallet-style checks only.

STAGE DOOR SCHOOL OF DANCE

CALL FOR SUMMER/FALL REGISTRATION

PRE-SCHOOL THRU ADULTS • FAMILY DISCOUNTS
654-8858
25 PATCHOGUE-YAPHANK ROAD • EAST PATCHOGUE

Our students have performed at the Gateway Playhouse Mainstage and Children's Theatre

69 EAST MAIN ST., PATCHOGUE, NY
PHONE 475-4774 FAX 207-0267

TRIO
FINE FOOD & DRINK

RIGHT NEXT DOOR TO PATCHOGUE THEATRE
KEVIN STAHL - CHEF/OWNER PLEASE CALL FOR RESERVATIONS

Swezey
FUEL CO., INC. - EST. 1919


Suffolk's Largest Family Owned Oil Company

- Automatic Oil Delivery Service
- 24-Hour Emergency Service
- Budget Plans That Pay You Interest
- Expert Installation Of Boilers, Burners, Hot Water Heaters & Pool Heaters

VISA MasterCard

475-0270
51 RIDER AVE., PATCHOGUE

PAPA NICKS PIZZA



Gyros, Salads, Heros, Dinners
Daily Lunch Specials
286-6400
117C-South Country Road,
Bellport Village, NY

Commerce Bank
America's Most Convenient Bank®
203+ offices throughout New York, New Jersey, Pennsylvania & Delaware
Garden City • Massapequa • Farmingville • Patchogue

Member FDIC First order of wallet-style checks only.

GOING TO THE AIRPORT?
DOOR TO DOOR TO JFK, LGA, ISLIP, NEWARK OR NYC SHARE RIDE VAN OR LUXURY SEDAN

\$3.00 OFF RETURN RIDE ONLY

WINSTON
MINI VAN SERVICE

CALL FOR YOUR AREA'S NEW LOWER PRICE
SUFFOLK 924-1200
NASSAU 1-800-424-7767
WWW.WINSTONTRANS.COM

"DOOR TO DOOR IS WHAT WE'RE FOR!"

\$3.00 OFF RETURN RIDE ONLY

LI'S OLDEST AND MOST RELIABLE

SINCE 1973

GATEWAY PLAYHOUSE STAFF

| | |
|---------------------------------------|---|
| Executive Producers | Ruth and Stan Allan |
| Producer..... | Paul Allan |
| Associate Producer..... | Jeff Bellante |
| General Manager | Gale Edwards |
| Casting Director/Company Manager..... | Stanley Schorr |
| Asst. Company Manager | Chris L. Butterfield |
| Administrative Assistant..... | Justin Flagg |
| Director | Lynnette Barkley |
| Choreographer..... | Laurie Brongo |
| Musical Director | Jeffrey Buchsbaum |
| Production Stage Manager..... | Maribeth Hunter* |
| Asst. Stage Manager | Krystle Di Nicola |
| Dance Captain | Vashty E. Mompoti |
| Lighting Designer | Doug Harry |
| Sound Designer/Engineer | Greg Reif |
| Technical Director..... | Russ Dobson |
| Master Electrician | Brian Loesch |
| Asst. Master Electrician..... | Mike Gugliotti |
| Costume Coordinator..... | Marianne Dominy |
| Wardrobe Assistant | Cheryl Widner |
| Wig Designer | Bonny Hughes |
| Flyman/Master Rigger | A.D. Garrett |
| Scenic Artist | J. Lourdes Aviles |
| Props Master | Jason Barrocini |
| Carpenters..... | Brian MacVeigh, Pete Sloane, Pat Johnson |
| Interns | Brittany Fahner, Isabella Gregory, MaryAnne Santini |
| Music Contactor | Peter Pece |
| Box Office Manager | Nancy Kana |
| House Managers..... | Kelly Adee, Elizabeth Bender, Gregg Monteith, Laurie Parr |
| Group Sales | Nadine Hazard |
| Box Office Staff | Danielle Frasca, Jodi Grega, Melissa Grossarth, Matt Kirk, Scott Maguill, Amy Prokop, Pam Stewart Gregg Monteith |
| House Staff..... | Jacob Almeida, Cliff Andrea, Marian Harrison, Liz Harrison, Mil Kana Juliette McPeak, Jill Plunkett, Dayna Nofi, Robert Nofi, Valerie Stanek & Rita Wehner |
| Cleaning Contractor | Fiori Enterprise, Inc. |
| Maintenance | Don Harrison |
| Landscaping..... | HTM Landscaping Co. |
| Concessions Manager | Linda Unger |
| Production Photographer | Mil Kana |
| Sound Consultant | Dominic Sack |
| Publicist | Linda Unger |
| Trucking Supervisor | John Schroeder |
| General Counsel..... | Ann L. Nowak & Associates |

Gateway Playhouse would like to thank our volunteer staff for their dedication and support. It is much appreciated.

Marie Rachek - Head Usher

Ushers - Al Aberg, Missy Atchue, Carmela Aiosa, Olga Belz, June Budd, June Budd, Ann Burke Betty Entress, Alice Freedman, Irene Fritz, Marian Harrison, Mary Lanier, Marge Littlefield, Joan McGroarty, Sue Nemet, Toni Repris, Alice Rucker, Terry Seng, Kim Stasheff, Carol Weinstein & Patricia Yurdiga

IF YOU WOULD LIKE TO JOIN OUR VOLUNTEER STAFF CALL 286-0555

WARNING - The photographing or sound recording of any performance is strictly prohibited.

Gateway Playhouse offers a wireless sound enhancement system for the hearing impaired. Inquire at the box office for more information.

FIRE NOTICE The exit indicated by a red light and sign nearest to the seat you occupy, is the shortest route to the outside. In the event of fire or other emergency, please do NOT run. WALK to that Exit. However, under normal circumstances, when leaving the Theatre, use the center rear exits. SMOKING is prohibited in the BUILDING, as required by the Suffolk County NO SMOKING Ordinance. Smoking in any area designated "No Smoking" renders the offenders subject to a fine, or imprisonment, or both.



Children's Theatre

Live Musical Shows!
All Seats \$8.00

PINOCCHIO



at the Patchogue Theatre
July 12,13,19,20,
26 & 27
Fri. & Sat.
at 10:30 a.m.

in Bellport
Aug. 2,3,9,10,
16 & 17
Fri. & Sat.
at 10:30 a.m.



WIZARD OF OZ



Aesop's Fables

Larger than life animated puppets tell the stories.

by Poko Puppets
at the Patchogue Theatre
August 30
10:30 a.m. and 1:00 p.m.



On Sale Now!

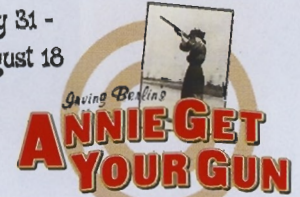
Phone orders are accepted.
Remaining tickets will be sold at the door, the morning of the show.
Sorry, Children ages 2 and older only -
No Infants Please. Shows subject to change without notice.



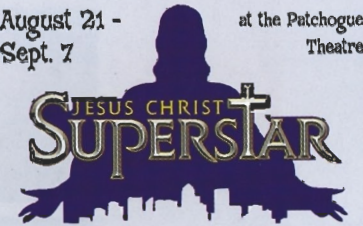
Don't Miss
The Second Half of Our
Sensational Season

TICKETS ARE STILL
AVAILABLE FOR...

July 31 -
August 18



August 21 -
Sept. 7



September 11 - 28



Sponsored
in part by



FOR TICKETS CALL

631.286.1133 OR
1-888-4TIXNOW

GATEWAY BOX OFFICE LOCATIONS

215 S. COUNTRY RD., BELLPORT
SMITHAVEN MALL ACROSS FROM THE MOVIE THEATER
WWW.GATEWAYPLAYHOUSE.COM

Official Airline for the Gateway Playhouse

MORE ROOM. ONLY ON AmericanAirlines®
www.aa.com