

250 CITIES. 40 COUNTRIES.  
**ONE AIRLINE.**



No matter where you need to be in the world, your first stop should be American Airlines. And now, as the only airline with more room throughout Coach for more Coach passengers, you can always travel in comfort. So if you want to see the world, or just make it to your next meeting, you can be sure American and American Eagle® can get you there. For reservations, visit [AA.com](http://AA.com), or call your Travel Agent or American at 1-800-433-7300.

**American Airlines®**

American Airlines, American Eagle and AA.com are marks of American Airlines, Inc. American Eagle is American's regional airline affiliate. Only American has removed seats throughout Coach to provide more room for more Coach passengers than any other airline; not available on American Eagle. Schedules subject to change.

*Gateway*  
**PLAYHOUSE**

MAY 19 - JUNE 12

*CAROUSEL*



SUMMER 2004

**PLAYBILL**



# W<sup>m.</sup> J. O'Neill

Sales Exchange Co., Inc.  
Jewelers and Collateral Loanbrokers



*Classic and Contemporary  
Platinum and Gold Jewelry designs  
that will excite your senses.*

One East Main St., Patchogue 631.289.9899

Mention this ad for 10% discount on purchase



- *The Pavilion Room and Bar overlooking the Swan River is now open for lunch and dinner daily.*
- *Live entertainment every Friday and Saturday night (see our website for details).*
- *Happy Hour every Friday from 4-6, featuring complimentary buffet and drink specials.*
- *\$5 Martinis Tuesday through Friday from 4-6 at the bar.*
- *Serving dinner until 10:00 Tuesday through Thursday, 11:00 Friday and Saturday. Late menu available until 12:00 Friday and Saturday.*
- *Join us after the show for dessert and one of our specialty coffees.*
- *Sunday Brunch.*

**Weekday Specials:** Tuesday – Pasta Specials  
Wednesday – Lobsterfest  
Thursday – Prime Rib Special



Chapel Avenue & First St., Patchogue, NY 11772  
631.475.9843 • [www.pinegroveinn.com](http://www.pinegroveinn.com)



## Long Island's First Choice For Cosmetic Surgery

Featured this summer in Vogue, Glamour, Allure and Self Magazines



Whether it is minimal incision surgery or an extreme makeover, Cosmetic Surgery of NY can help you achieve the look you've always dreamed of. For over 25 years, we have specialized in procedures such as facial rejuvenation, breast surgery, tummy tucks, body sculpting and skin care. With a fully accredited on site surgical suite and board certified surgeons on staff, Cosmetic Surgery of NY provides the highest quality care.

631-473-7070

CALL TODAY FOR YOUR COMPLIMENTARY CONSULTATION!



## COSMETIC SURGERY of NEW YORK

4616 Nesconset Highway • Port Jefferson Station, NY 11776

www.cosmeticsurgeryofny.com



## Who Says "Roughin' It" Has To Be Rough?

### New & Pre-Owned Trailers & Motor Homes

Your Next Vacation Can Be Comfortable and Affordable!  
Go to [www.tagmotors.com](http://www.tagmotors.com) To View Our Complete Line

★ GREAT PRICES ★ GREAT SELECTION ★  
★ A VEHICLE FOR EVERY BUDGET ★

RV Sales Service & Parts • LONG ISLAND'S #1 RV CENTER

# TAG MOTORS & RVs

475-1838 1601 RTE. 112 MEDFORD

Across From Meat Farms

Open for Lunch & Dinner  
Tuesday through Sunday

# LOUIS XVI

Reservations  
Recommended



Voted the No. 1 restaurant overall on LI, as well as No. 1 for Decor – devotees swear it could rival “the Palace of Versailles” – this “extravagant”, “elegant” and “exquisite” “crown jewel” boasts “gorgeous views” of Great South Bay from its “beautiful setting on the water” in Patchogue; indulge in “extraordinary”, “imaginative” New French cuisine “magnificently presented” by an “impeccable” staff; dip into the “kids’ college fund” or “mortgage the house” if you must, but it’s “worth every franc” for such an “incredible dining experience.”

– Zagat Survey 2000 26 28 25 \$57

600 South Ocean Avenue • Patchogue, 654-8970

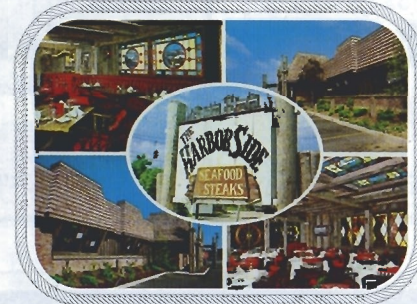
# THE HARBOR SIDE

“Incomparable Seafood Restaurant”

Open 7 Days a Week  
at 11:30 a.m.

All Major Credit  
Cards Accepted.

Complete Dinners  
Everyday.



Highly Recommended:

\*\*\*

Newsday

Daily News

NY Post

The Practical Gourmet

### Complete Lunches\*

Served Mon. - Sat.  
11:30 a.m. - 3:00 p.m.  
Starting at \$7.95

### Complete Early Bird Specials\*

Served Mon. - Sat.  
3:00 p.m. - 6:00 p.m.  
Starting at \$13.95

### Sunday Specials

Includes: Soup or Salad,  
Potato, Vegetable, Dessert & Coffee.  
11:30 a.m. - 4:00 p.m.  
Starting at \$9.95

\*Above specials not available for groups of 15 or more on holidays. Prices subject to change.

Special Rates for Theatre Groups from 20 to 125. Call for more information.

503 E. Main Street, Patchogue, New York

Located on the corner of E. Main St. (27A) and Phyllis Dr. • (631) 654-9290

Complete Dinners starting at  
\$18.95 includes appetizer,  
soup or salad, potato,  
vegetable, dessert & coffee





# Bellport Orthodontics

## Braces for Children and Adults

- Free Consults for Children
- Preventive early childhood treatment
- Clear and invisible braces available
- Major credit cards accepted
- Payment plans available
- Most insurance plans accepted

**Dennis Angelillo, DDS 286-7651**

1 Station Ct. (formerly 30 Station Rd.), Bellport • Located in the Village of Bellport

# Swezey

FUEL CO., INC. - EST. 1919

## Suffolk's Largest Family Owned Oil Company

- Automatic Oil Delivery Service
- 24-Hour Emergency Service
- Budget Plans That Pay You Interest
- Expert Installation Of Boilers, Burners, Hot Water Heaters & Pool Heaters



# 475-0270

51 RIDER AVE., PATCHOGUE

# CAVANAUGH'S

"Let's Have Fun" Est. 1986

Serving Lunch Daily Starting at 11:30  
Dinner Served Every Night

Dining Room Open Sunday - Thursday Till 11 PM  
Friday And Saturday Till 12 Midnight

### DINING SPECIALS

Mondays - 2 For 1 Chicken Wings  
Tuesdays - 20 Oz. Porterhouse \$12.99  
Thursdays - Prime Rib \$12.99

### Kitchen Open

Sunday - Thursday Till 12 Midnight  
Friday and Saturday Till 2 AM • 19 TVs - Quick Draw



255 Blue Point Avenue, Blue Point  
631-363-2666

# A Letter from the Producer

Welcome to the 54th season at Gateway! Our mission remains, to present Broadway Musicals with a high standard of excellence for our audiences to enjoy for the first time, or to see again - anew. Today, live theatre must compete with less expensive and readily obtainable entertainment alternatives like "Reality" TV Shows, DVD rentals, Internet media, and the latest summer blockbuster. However, as anyone who saw last year's *Miss Saigon* will attest, there is nothing like the thrill of being swept up in the energy of a live performance skillfully executed! We pray younger generations will keep this art form alive and hope theater enthusiasts will continue to bring their children and children they teach, to appropriate shows - having scheduled our second annual "Students Bound For Broadway" series of morning matinees for school groups. We continually strive to keep the medium fresh with new takes on classic musicals, like this year's *Carousel*, *Gypsy*, and *Cabaret*, by casting against stereotype with non-traditional performers, creating new set design and lighting concepts, and implementing new orchestrations when approved by licensing organizations. Whenever possible, we try to obtain the rights to new pieces, and this year present the Long Island premiere of *Cats* and the rarely staged *Swingtime Canteen*. We are thrilled to be the first theater in the nation to produce its own version of *Fosse* after its Broadway run and the National Tour. Your patronage is appreciated and essential in our quest, whether this is your first visit, or your hundred-and-first. Enjoy the show!

Paul Allan

Want to escape the everyday and have fun?

Try a Long Island Rail Road Manhattan Getaway

For details pick up a brochure, call 631-231-LIRR or log on to [www.mta.info](http://www.mta.info)

Long Island Rail Road



- Citizens of Humanity
- Milly
- Laundry
- BCBG
- Juicy
- A.B.S.
- Nanette Lepore
- Womyn
- Michael Stars
- Theory
- Shoshanna
- Tommy Bahama
- Women's & Men
- Lilly Pulitzer
- Flax
- Brighton
- Roxy
- Allen Allen
- Nicole Miller

**Debra Canavan**  
CLASSICS

Casual, Career and Cocktail  
53 Main Street • Sayville  
631.563.9385



Free Checking.  
Free gift.  
Better bank.



Open an account today.

**Bellport Office**  
29 Station Road,  
Bellport, NY 11713  
631-286-3800

**Patchogue Office**  
325 E. Main St.  
Patchogue, NY 11772  
631-475-2600

**Michael Pollmann** -  
Assistant Vice President

**Joseph P. Zaffuto** -  
Vice President

**HSBC** 

The world's local bank

us.hsbc.com 1-800-975-HSBC

Issued by HSBC Bank USA ©HSBC Bank USA 2004

*Gateway*  
**PLAYHOUSE** 

Presents  
Rodgers & Hammerstein's

**CAROUSEL**

Music by RICHARD RODGERS  
Book and Lyrics by OSCAR HAMMERSTEIN II

Based on Ferenc Molnar's play "Liliom" as adapted by Benjamin F. Glazer  
Original Dances by Agnes de Mille

with

D.B. BONDS  
NICOLE FENSTAD  
JAN LEIGH HERNDON

DON BOVINGLOH  
TOMMY FOSTER  
MICHAEL HAYWARD-JONES

JASON DULA  
JULIE J. HAFNER  
JENN MORSE

Producer  
PAUL ALLAN

Associate Producer  
JEFF BELLANTE

General Manager  
GALE EDWARDS

Artistic Director  
ROBIN JOY ALLAN

Company Manager  
STANLEY SCHORR

Production Stage Manager  
JOYON SHUCK

Technical Director  
MICHAEL BOYER

Costume Coordinator  
MARIANNE DOMINY

Lighting Design  
DOUG HARRY

Costume Design  
ALLEN WILSON

Musical Direction by  
JEFFREY BUCHSBAUM

Choreographed by  
SHARON R. HALLEY

Directed by  
**BOB DURKIN**

CAROUSEL is presented through special arrangement with the Rodgers & Hammerstein  
Theatre Library, 1065 Avenue of the Americas, Suite 2400, New York, NY 10018

**La Margherita**  
The Original Brick Oven Pizza

Theatre Groups Welcome

Complimentary Appetizer with your lunch or dinner entree  
when you present your show tickets

1229 Station Road, Medford • 924-0048 Fax 924-0094



**ART COLEMAN 475-1733**  
**878-2010**

Family Owned and Operated For Over 50 Years

- Dedicated to Honest & Reliable Service
- Precast Cesspools Installed
- Portable Toilet Rentals

1 Chapel Avenue, East Patchogue, New York 11772



## CAST OF CHARACTERS

(in order of appearance)

Carrie Pimperidge .....	NICOLE FENSTAD*
Julie Jordan .....	JENN MORSE*
Mrs. Mullin .....	JAN LEIGH HERNDON*
Billy Bigelow .....	TOMMY FOSTER*
David Bascombe .....	MICHAEL HAYWARD-JONES*
Nettie Fowler .....	JULIE J. HAFNER*
Enoch Snow .....	JASON DULA*
Jigger Craigin .....	D.B. BONDS*
Policeman .....	STEVE WINKLEMEYER
Heavenly Friend .....	ROBIN LEIGH MASSIE
Star Keeper .....	DON BOVINGLOH*
Louise .....	MICHELLE PUCCI
Carnival Boy .....	MCCREE O'KELLEY
Enoch Snow, Jr. ....	A.J. CADE
Dr. Seldon .....	DON BOVINGLOH*
Snow Children .....	CONNER BYRNES, STEPHANIE FEINBERG, HAYLEY LYNN GILLMAN, JAMEE LYNN GIORGI, RYAN KOERBER, STEPHANIE OSMANSKI, MARISA TACHE, EMILY JOY VAETH
Ensemble .....	PURDIE BAUMANN, ANNE-MARIE BRULÉ, A.J. CADE, JONATHON GRANT, JESSUE LUTTRELL, NICOLE MANGI, ROBIN LEIGH MASSIE, MCCREE O'KELLEY, REGINA PELUSO, MICHELLE PUCCI, ERIC SHOREY, BRIAN SLAMAN, MATTHEW WINNEGGE

## UNDERSTUDIES/COVERS

Understudies never substitute for listed players unless a specific announcement is made at the time of the performance.

Nettie Fowler cover .....	JANE BROCKMAN*
Carrie Pimperidge/Nettie Fowler .....	ROBIN LEIGH MASSIE
Julie Jordan .....	ANNE-MARIE BRULÉ
Mrs. Mullin .....	PURDIE BAUMANN
Billy Bigelow .....	D.B. BONDS*
David Bascombe .....	JONATHON GRANT
Enoch Snow/Jigger Craigin/Star Keeper/Dr. Seldon .....	STANLEY SCHORR*
Heavenly Friend .....	NICOLE MANGI

## THE ORCHESTRA

Conductor/Piano .....	JEFFREY BUCHSBAUM
Keyboard .....	PAUL FEYER
Reeds .....	MARGE EWALD & LARRY WOODALL
French Horn .....	AMBER LANE, IAN DONALD
Violin .....	MARNI HARRIS
Trumpet .....	JOE BOARDMAN
String Bass .....	MICHAEL PREEN
Percussion .....	GREGG MONTEITH



The Musicians employed in this production are members of the American Federation of Musicians.



Actors employed in this production are members of Actors' Equity Association, the union of Professional Actors and Stage Managers in the United States.

ssdc

The Director/Choreographer is a member of the Society of Stage Directors and Choreographers, Inc., an independent national labor union.

Playbill Designed and Printed by Searles Graphics, Inc.

# CAST



Purdie Baumann



Jason Dula



Jan Leigh Herndon



Jenn Morse



Brian Slaman



Jamee Lynn Giorgi



D. B. Bonds



Nicole Fenstad



Michael Hayward-Jones



McCree O'Kelley



Conner Byrnes



Ryan Koerber



Don Bovingloh



Tommy Foster



Jessue Luttrell



Regina Peluso



Stephanie Feinberg



Stephanie Osmanski



Anne-Marie Brulé



Jonathon Grant



Nicole Mangi



Michelle Pucci



Hayley Lynn Gillman



Marisa Tache



A. J. Cade



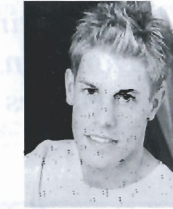
Julie J. Hafner



Robin Leigh Massie



Eric Shorey

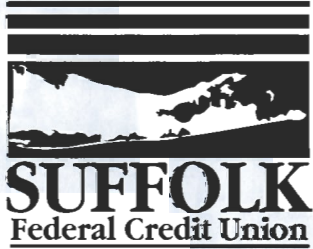


Matthew Winnegge



Emily Joy Vaeth





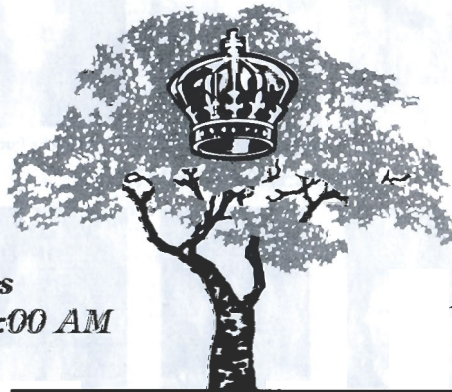
We're like a bank-only better.  
 If you live or work in Suffolk  
 County you are now eligible to  
 join Suffolk Federal Credit Union.

[www.suffolkfcu.org](http://www.suffolkfcu.org)  
 631-924-8000

Mortgages – Home Equity – Line of Credit  
 Business Accounts – Business Loans  
 Savings – Investments – Money Market

**Before or After The Show**  
 Late Night Dinner • Dessert and Coffee

*All Baking  
 Done On  
 Premises*



*Breakfast,  
 Lunch and  
 Dinner*

*Open 7 Days  
 6:00 AM - 2:00 AM*

*Daily Specials*

**ROYAL OAK**  
 Diner - Restaurant

Station Road and Sunrise Highway - Bellport, New York 11713

TEL. (631) 286-5757

**SYNOPSIS OF SCENES AND MUSICAL NUMBERS**

**ACT I**

- Scene 1: AN AMUSEMENT PARK ON THE NEW ENGLAND COAST IN MAY  
 "Prologue" (The Carousel Waltz) .....The Company
- Scene 2: A TREE-LINED PATH ALONG THE SHORE, A FEW MINUTES LATER  
 "Mister Snow" .....Carrie and Julie  
 "If I Loved You" .....Billy and Julie
- Scene 3: NETTIE FOWLER'S SPA ON THE OCEANFRONT IN JUNE  
 "June Is Bustin' Out All Over" .....Nettie, Carrie and the Chorus  
 "Mister Snow" - Reprise .....Carrie, Enoch and the Girls  
 "When the Children Are Asleep" .....Enoch and Carrie  
 "Blow High, Blow Low" .....Jigger, Billy and the Men  
 "Soliloquy" .....Billy  
 "Finale Act I" .....Nettie and the Company

.....  
**INTERMISSION**  
 .....

**ACT II**

- Scene 1: ON AN ISLAND ACROSS THE BAY, THAT NIGHT  
 "A Real Nice Clambake".....Nettie, Julie, Carrie, Enoch and the Chorus  
 "Geraniums in the Winder" .....Enoch  
 "Stonecutters Cut It On Stone" .....Jigger and the Chorus  
 "What's the Use of Wond'rin" .....Julie and the Girls
- Scene 2: MAINLAND WATERFRONT AN HOUR LATER  
 "You'll Never Walk Alone".....Julie and Nettie  
 "The Highest Judge of All" .....Billy
- Scene 3: UP THERE
- Scene 4: DOWN HERE ON A BEACH, FIFTEEN YEARS LATER  
 "Ballet" .....Louise, Carnival Boy, Enoch, the Snow Children and the Dancers
- Scene 5: OUTSIDE JULIE'S COTTAGE  
 "Reprise: If I Loved You".....Billy
- Scene 6: OUTSIDE A SCHOOLHOUSE, THE SAME DAY  
 "Finale Ultimo" .....The Company

**Dennis P. O'Hara, D.C.**



Office Hours By Appointment  
 Phone: (631) 286-2300

16-2 Station Road, Bellport, NY 11713

Est. 1967

**Therm-A-Trol Inc.**  
 Air Conditioning/Heating Specialists  
 • Sales & Service •



Call Today For Your Appointment  
 363-6600

120 North Division Avenue,  
 Blue Point

*Fully Licensed and Insured*



## Who's Who

**PURDIE SARAFINA BAUMANN** (*Ensemble/u/s Mrs. Mullin*) grew up dancing at her mother and father's dance studio in Maywood, IL. She continued dancing at The Chicago Academy for the Arts and later went to North Carolina School of the Arts, majoring in Ballet. Purdie took her first professional job onboard Renaissance Cruises and later Norwegian Cruise Line doing *Gyps and Dolls* and *Fosse*. She moved to NYC and landed a Rockette position at Radio City Music Hall. Ms. Baumann is thrilled to be joining Gateway Playhouse and its production of *Carousel*.

**D.B. BONDS** (*Jigger/u/s Billy*) Broadway credits include *Les Miserables* and *The Phantom of the Opera*. National tours: *The Scarlet Pimpernel* (u/s *Percy*), *Les Miserables*,

and *The Phantom of the Opera*. He was also seen in Jason Robert Brown's *The Last Five Years* at the Minetta Lane Theater.

**DON BOVINGLOH** (*Star Keeper/ Dr. Seldon*) is delighted to return to the Gateway Playhouse. On the stage, Don has appeared in *A Funny Thing Happened...Forum*, *Music Man*, *Company*, *Jekyll and Hyde*, *Love Letters*, and many others including *South Pacific*, *Kiss Me Kate*, and *Best Little Whorehouse* at Gateway. Don has directed numerous plays and musicals which include *Hello Dolly*, *How To Succeed in Business...*, *Other People's Money*, *Mame*, *Child's Play*, *The Odd Couple*, *Cabaret* and *Baby* at the Pasadena Playhouse in Los Angeles. Bovingloh lived and worked in Los Angeles for 20 years and has appeared in over 250 commercial, film and television roles. Don was an original member and a teacher at the prestigious Groundling

Theatre Company in Hollywood, a source for many past and present cast members of *Saturday Night Live*. A few guest starring roles have been on *Columbo*, *Newhart*, *Days of Our Lives*, *General Hospital*, *Murder She Wrote*, *Murphy Brown*, *The Hogan Family*, *Family Law*, *Just Shoot Me*, and *Law and Order*. Don continues to meld his theatrical background with a passion for the arts and education through his Improv and Musical Theatre workshops which he facilitates in New York, Los Angeles and theatres around the country. Special thanks to Robin, Stanley, Bob, and Jack.

**ANNE-MARIE BRULÉ** (*Ensemble/u/s Julie*) began dancing at age 4. After Miss Donna's School of Dance she attended and graduated from Interlochen Arts Academy as a dance major. She went on to receive her BFA in performance and

choreography from S.U.N.Y. at Purchase College. Regional credits include *Best Little Whorehouse in Texas*, *Easter Parade* and *Nunsense II*. Anne-Marie is also a Lindy Hopper. She has won several competitions including the American Lindy Hop Championships in 1999.

**A.J. CADE** (*Enoch Jr./Ensemble*) Professional debut! Recently finished studying at the American Musical and Dramatic Academy. I would like to thank my friends and family for all their support.

**JASON DULA** (*Enoch*) is thrilled to be here at Gateway. Jason has appeared as a back-up singer for Linda Eder on Broadway and her Bravo Christmas Special. Other credits: Off-Broadway: *The*

## Who's Who

### Gateway Playhouse & Patchogue Theatre

We wish you a successful  
2004 season  
and continued  
success in all your  
worthy endeavors.



www.northforkbank.com  
Member FDIC

*Richard York*  
OF PATCHOGUE



631-475-1047  
14 South Ocean Ave.  
Patchogue  
Four Stores  
South of Main St.

Quality Footwear for the Entire  
Family Since 1927

- Helpful, Friendly Service
- Areas Largest Selection  
of Sizes & Widths AA-EEEE

Rockport, Easy Spirit, Florsheim, New Balance,  
Stride Rite, Teva, Timberland, Skechers, Munro,  
Dexter, Keds, Reebok, Dyeables, Topsider, Soft  
Spots, Clarks, Naturalizer, Hush Puppies, Daniel  
Green, Foamtreads, etc.

**10% OFF** any purchase  
with ad only

Excludes Easy Spirit, Dr. Martens & other offers. Expires 12/31/04

## Swan Bakery

All Occasion Cakes

Guy Gagliano

The Official Bakery of Gateway Playhouse

15 South Country Rd., East Patchogue, NY 11772  
(631) 475-9626

www.gudephotography.com

631-  
654-8093



## Morgan's Beach House Restaurant



Lunch & Dinner - Indoor/Outdoor  
363 Curson Ave. Patchogue 631-758-3524  
(closed Mondays)



Irish Coffee  
  
 Pub  
 at  
**Bellport**  
  
**Country Club**

always open to  
the public.

The favorite for  
pre- and post-show  
dining.

Conveniently located between  
Gateway Playhouse and  
Patchogue Theater on  
SOUTH COUNTRY ROAD, in  
BELLPORT VILLAGE

Available for groups and  
small parties.

FOR RESERVATIONS  
CALL

**286-4227**

Also visit  
Irish Coffee  
  
 Pub

on CARLETON AVENUE  
in EAST ISLIP  
277-0007

*Grass Harp* (Collin) with Sandy Duncan, *His Excellency* with Tony Roberts, *A New Girl in Town* (Oscar), all at the York Theatre. First National Tour: Kopit/Yeston's *Phantom* (Count Phillipe). Regional: *Great Expectations* (Goodspeed), *A Tale of Two Cities* (Darnay), *Ragtime* (Brother), *Children of Eden* (Cain/Japheth). Jason is a graduate of the N.C. School of the Arts, and dedicates this performance to his brother—God Bless!

**NICOLE FENSTAD** (*Carrie*) is delighted to be working at Gateway Playhouse. She currently resides in New York City, but has spent a substantial amount of time in Europe touring with the musical *Grease*. She recently finished doing the world premiere of a new musical about Rosemary Clooney entitled *A Dash of Rosemary*. Favorite roles include: Sandy, *Grease*; Lily St. Regis, *Annie*; Roxie, *Chicago*; Ado Annie, *Oklahoma*; Woman 1, *I Love You You're Perfect Now Change*; Eva Peron, *Evita*; and Christine in *Phantom*. She is a native of Fargo, N.D. and earned a B.A. in Theatre from the University of Minnesota; Moorhead.

**TOMMY FOSTER** (*Billy*) is excited to be making his Gateway Playhouse debut in his favorite musical, *Carousel*. Regionally, he appeared as Willard Hewitt in *Footloose* at the Ogunquit Playhouse in Maine, Hero in *A Funny Thing Happened On the Way to the Forum*, and the title role in *Joseph and the Amazing Technicolor Dreamcoat* at the Mac-Haydn Theatre in Chatham, NY. He spent a season with the Mill Mountain Theatre in Roanoke, VA, toured the East Coast after 9/11 with Theatreworks USA as Aslan in *The Lion, the Witch and the Wardrobe*, and in his native Charlotte, NC, played Harlon in *Stanton's Garage*, John in *john and jen*, and Bobby in *Love! Valour! Compassion!* He is a

proud high school graduate of the NC School of the Arts and has a BFA in Musical Theatre from the University of Michigan. Eternal gratitude to Mom and Brent for continued love and support, thank you to Joel for raising the bar, and to Robin for believing in me for 2-1/2 years. For Grandma, wherever you are.

**JONATHON GRANT** (*Ensemble/u/s Bascombe*) is very excited to be a part of the Gateway family. He has been featured in the National Tours of Susan Stroman's *Oklahoma* (Frisky Pete) and *Fosse* (singing "Mr. Bojangles"). Regional: *Oklahoma* (Dream Curly), *Guys & Dolls* (Benny), *South Pacific*, *Fiddler on the Roof* (Fyedka), *Grease* (Sonny), *The Who's Tommy*, and, being a BTP alumnus, soloist in *Broadway 2002*, Directed by Ann Reinking.

**JULIE J. HAFNER** (*Nettie*) most recently appeared as The Wicked Witch of the West/Miss Gulch in *The Wizard of Oz* at Syracuse Stage. BROADWAY: *Nine* with Raul Julia; the 20th anniversary tour of *Annie* as Mrs. Pugh and the understudy to Sally Struthers. OFF-BROADWAY: Mr. Bobby/*The Club* at Circle in the Square (Obie Award for Performance—directorial debut of Tommy Tune); Molly/*The Green Heart* for Manhattan Theatre Club; Mother Superior/*Nunsense I & II*. REGIONAL: Evangeline Harcourt/ *Anything Goes* at the Shubert Theatre in New Haven and the Cape Playhouse; Miss Wells/*Dracula* with Jean LeClerc at the Cape and Ogunquit Playhouse; Domina/A *Funny Thing Happened on the Way to the Forum* at St. Louis Repertory, Barter Theatre and the Cape and Ogunquit Playhouses;

**WE'RE SUFFOLK COUNTY'S  
 BEST KEPT TRUCK SECRET!  
 0% PRESSURE - 100% SATISFACTION GUARANTEED!**



2004 Envoy SLE      2004 Sierra      2004 Yukon      2004 Yukon XL Denali  
 "SERVING THE COMMUNITY SINCE 1952 AS YOUR GMC TRUCK HEADQUARTERS!"



**Cassel** GMC  
 WE ARE PROFESSIONAL GRADE™

**GMC TRUCK SALES**  
 550 North Ocean Avenue • Patchogue, NY  
 3 Miles South of IJE • 1 Block North of Sunrise Hwy.  
**1-800-758-5811**  
 Find us at [www.GMbuypower.com](http://www.GMbuypower.com)



# Rodgers and Hammerstein

Richard Rodgers and Oscar Hammerstein II had one of the most successful collaborations in the history of musical theatre. Yet when they teamed up in 1943 for *Oklahoma!*, their situations were more dramatic than anything they would write for stage.

Rodgers and his partner Lorenz Hart, with whom he had been writing since he was a teenager, had enjoyed phenomenal success on stage, writing as many as four shows a year, including *On Your Toes*, *The Boys From Syracuse* and *Pal Joey*; and had also spent four accomplished years in Hollywood writing film scores. By the early 1940's, however, Hart was suffering from alcoholism so severe he could no longer be counted on to work, and Rodgers was at his wits' end. Meanwhile, Hammerstein was considered a has-been after a string of flops on screen as well as stage, following a successful collaboration with Jerome Kern reviving the operetta form with shows like *Show Boat*. Rodgers was approached to write a musical based on the play "Green Grow The Lilacs" but since Hart was unreliable, he offered the lyricist job to Hammerstein, whom he knew from his Columbia University days. The result was something no one had

ever seen before - a blending of Rodgers' musical comedy style with Hammerstein's operetta expertise. In an age when theatergoers were used to musicals that opened with big dance numbers full of flashy chorus girls singing the latest popular hit, *Oklahoma!*'s simple scene of Aunt Eller churning butter while an offstage Curly began the ballad "Oh, What A Beautiful Morning" was revolutionary. Lorenz Hart died of complications from pneumonia a few months after *Oklahoma!* opened on Broadway, and the Rodgers and Hammerstein partnership became permanent till Hammerstein's death from cancer in 1960.

More than any other writing team, Rodgers and Hammerstein transformed the musical comedy into a new form, the musical play, where the songs were intrinsic to the story, and developed the characters. The plots of their shows addressed controversial topics like racism, domestic violence, and the battle of the sexes. The team wrote nine musicals, six of which (*Oklahoma!*, *Carousel*, *The King And I*, *South Pacific*, *Flower Drum Song*, and *The Sound Of Music*) are always on stage somewhere in the world. They also experimented with writing for film (*State*

*Fair*) and television (*Cinderella*) and both of these were eventually adapted for stage. All in all, the pair's musicals won 35 Tony Awards, 15 Academy Awards, two Pulitzer Prizes (for *Oklahoma!* and *South Pacific*), two Grammy Awards and two Emmy Awards.

After Hammerstein's death, Rodgers continued to compose, working with lyricists including Stephen Sondheim, Martin Charnin, and Sheldon Harnick, although he would never again have a permanent collaborator. He also wrote solo works, like the show *No Strings*, the television musical *Androcles And The Lion*, and additional songs for the 1965 film version of *The Sound Of Music*. Eleven years after his 1979 death, the 46th Street Theatre was renamed in his honor. In 1998, *Time Magazine* and *CBS News* cited Rodgers and Hammerstein among the 20th Century's most influential artists and called *Carousel* the best musical of that century. In 1999, they were commemorated on a US postage stamp...as was Lorenz Hart on one of his own in the same series.




**Meritage**  
RESTAURANT  
631.286.3300 • 14 Station Road • Bellport

**ASSOCIATE PRIME MEAT MARKET**



A Full Line of Groceries,  
Meats & Poultry • Deli,  
Vegetables • Beverages

109 Maple Ave. Patchogue, NY 11772  
Phone: (631) 475-1749  
Fax: (631) 447-5086

**THE BANK OF NEW YORK**  
LONG ISLAND REGION

**24-hour ATM**

32 Station Road, Bellport,  
New York 11713

**(631) 286-4200**

Member FDIC 1986 The Bank of New York

**LYONS FUEL OIL CO. INC.**  
est. 1934

~ ~ ~

**24 Hr. Service**      **Automatic Delivery**

~ ~ ~

23 Station Road • Bellport, New York 11713  
Phone (631) 286-0395 • Fax (631) 286-0396

JOE 281-0376

**SHIRLEY SLEEP SHOPPE**  
618 Montauk Highway • Shirley, NY 11967



Complete Line of Conventional,  
Waterbeds & Futons



## Who's Who

## Who's Who

Sister/Damn Yankees with Tony Randall at TUTS; Gladys Fritts/Radio Girls at Geva; Queen/Cinderella at Cleveland Opera; Mrs. Sowerberry/Oliver; Mrs. Fezziwig/A Christmas Carol at Alabama Shakespeare Festival; Mama to Charles Busch in Little Me at Birmingham Theatre and Mrs. Segstrom/A Little Night Music at George Street Playhouse.

**MICHAEL HAYWARD-JONES** (Mr. Bascombe) returns to Gateway after a year playing M. Thénardier on the National Tour of *Les Misérables*. He was last seen here as Sir Danvers Carew in *Jekyll and Hyde*. Broadway and national touring audiences have seen him in *Evita*, *The King and I*, *Me and My Girl*, *A Little Night Music*, *Beauty and the Beast*, *A Christmas Carol*, *The Sound of Music*, *Brigadoon*, *She Loves Me*, *Mame*, and *Call Me Madam*.

**JAN LEIGH HERNDON** (Mrs. Mullin/dance captain) Broadway: *A Chorus Line* (Sheila), *La Cage Aux Folles*. Off-Broadway: *Give My Regards to Broadway*, *Joan and the Devil*, *Scapegrace* (written and directed by N. Richard Nash), *Thoughts in a Woman's Mind* (a presentation for The Women's Project). Regional: *The King and I* (Anna), *Evita* (Eva), *Educating Rita* (Rita), *42nd Street* (Dorothy), *The World Goes Round* (Buffalo Studio

Arena and FST), *The Sound of Music* (Elsa-Casa Manana), *A Chorus Line* (Northshore Music Theatre and Papermill Playhouse), *A Day in Hollywood/A Night in the Ukraine* (Repertory Theatre of St. Louis and San Jose Rep), *Puttin on the Ritz* (Florida Stage), *Crazy for You* (Westchester's Broadway Theatre) and *Bingo* (Adirondack Theatre Festival). Gateway audiences may remember Jan in *A Chorus Line* (Sheila), *City of Angels* (Alaura), *Lend Me a Tenor* (Diana) and *State Fair* (Emily Arden), among others. Jan also works as a director/choreographer. She thanks her husband, actor Stephen Berger, and terrier Frankie, for their love and support.

**JESSUE LUTTRELL** (Ensemble) Regional: *Evita*, *West Side Story*, *Meet Me in St. Louis*. Trained and danced professionally with Pennsylvania Academy of Ballet, The Rockscool/PA Ballet, CPYB, and Pittsburgh Ballet Theatre. Originated roles in two of Alan Hineline's premier ballets. Appearing in West Virginia Public Theatre's 2004 summer season. Thanks Bob!

**NICOLE MANGI** (Ensemble) is excited to be returning to Gateway for her second season. You might have seen her last year in *On the Town*. She just recently completed her first national tour of *The Unsinkable Molly Brown*. Favorite roles include Peggy

Sawyer (*42nd Street*), Peter (*Peter Pan*), Amy (*Company*), and Martha (*Secret Garden*). TV: *Guiding Light*. She holds a BFA in Musical Theatre from Webster Conservatory. Nicole sends much love to her family and friends.

**ROBIN LEIGH MASSIE** (Ensemble/Heavenly Friend/u/s Carrie/Nettie) has established her career as a versatile artist, performing in opera, concert, and musical theatre. She has performed with New York City Opera, Tulsa Opera, Kentucky Opera, Princeton Opera, and Trenton Civic Light Opera. Last summer, she appeared as Laurey Williams in *Oklahoma!* with the Bucks County Playhouse. Her repertoire includes roles in *The Music Man*, *The Secret Garden*, *Brigadoon*, *The Mikado*, *Hansel and Gretel*, *Falstaff*, and *Don Giovanni*. Ms. Massie has

appeared as Jellylorum in the Hamburg, Germany production of Andrew Lloyd Weber's *Cats*, and recently sang the part of the First Fairy in Mendelssohn's *A Midsummer Night's Dream* with the New York Ballet. She can be heard as the soprano soloist on the Westminster Choir recording *Like as a Hart*. A native of Austin, Texas, she received a bachelor's degree from Westminster Choir College, and a master's degree from Yale University. Upcoming engagements include the role of Papagena with Opera Delaware and a recording with the Indianapolis Symphony Orchestra's *Yuletide Celebration* program. Thank you to Bob and Jeff for believing in me. All my love to my husband Steven, my wonderful family and friends. Thanks be to God!

### ROE AGENCY INC. Insurance Since 1898

Personal Insurance  
Commercial Insurance  
Property, Casualty  
Life  
Health  
Financial Services

◆ 125 East Main Street ◆  
◆ Patchogue, New York 11772 ◆  
Phone: 631.475.4000  
Fax: 631.475.7648

### Old Inlet Inn



Fine Dining Since 1980  
Dinners from 5-10:00 p.m.  
Sunday Brunch 12 - 3:00 p.m.  
Sunday Dinner 5 - 9:00 p.m.  
Closed Mondays

Four Blocks From The Gateway Playhouse and Ten Minutes From The Beautifully Renovated Patchogue Theater

Piano Bar Fri. & Sat. 8:30 - 12:30  
Wednesdays - Lobster Bake  
Patio Dining

108 So. Country Road, Bellport  
286-2650

10% Entrée Discount  
with Theatre Tickets

### Donato's RESTAURANT



"A Taste of Italy in  
the Heart of Patchogue"

114 W. MAIN ST., PATCHOGUE

OPEN FOR DINNER AT 4:30  
WEDNESDAY - SUNDAY

1+1/2 BLOCKS WEST OF NO. OCEAN AVE.

(631) 447-7766

### MIHstudio

Fine Art



10 Bell Street, Bellport, New York 11713  
Phone 631 286 4020

www.ihmels-herget.com



# "Open a new window, Open an old door..."



Every year, Opening Night of the new Gateway season is ablaze with excitement. Walking from the parking lot to the lobby, patrons waiting since December, can be heard admiring the fishpond, landscaping, and greeting other theater-goers and staff. "We always look forward to you reopening," they say. The thing is, Gateway is never really closed! When the theater is dark, we're still busy, working on the next season, and maintaining and developing the Gateway estate.

Getting the season ready really starts the year before, in August, when royalty companies are contacted for rights. "There really isn't any downtime, administratively or in the box office," said Producer Paul Allan. In December, a proposed season is announced, pending Broadway show closings." After the season is set, Paul and his sister, Artistic Director and Casting Director Robin Joy Allan, discuss the chosen shows and begin selecting artistic staff. "We aim to fit our creative staff to the piece," Robin said and then clarified, "For example, some musical directors specialize in classic pieces, others in contemporary, some choreographers are versed in ballet, others in tap and some in jazz. Some directors are drawn to shows with intricate, what we call, "book" scenes, while others are more visual in their style and prefer shows with more staging due to a dominance of music over word. I then check

their availabilities, hoping the perfect match will occur. These experienced artists work around the country at other professional venues", she explained, "So I have to contact them early." At this point she begins communicating with those on board, on the vision for each production, and begins making lists of actors appropriate for leading roles.

Meanwhile, Associate Producer Jeff Bellante, who also manages Gateway's computer network, readies the box office systems for sales. "The need for computers has grown tremendously as we keep our business current to compete with other theatres. I have had to continually educate myself in the technology in order to keep pace. Computers are involved in just about every aspect of the business," relayed Jeff. "All season ticket holders from the year before are transferred into the new season's charts as reservations. "Then, I use word processing to create a renewal form for customers which merges with the ticketing data.," Jeff said. After the renewal period, new subscriptions go on sale. Everything is geared toward the day all tickets are available to the general public - around April 1.

February is the month Robin designs the season brochure, with the overall design and theme for the summer. This carries thru to the show posters and Playbill covers. Paul is busy with advertising strategies. "Each season always has its own look,

from style and content, through color scheme and what we want to say to market the season", Paul said. By March, she goes full force into casting mode and has put out a "Breakdown" for the first two shows. Breakdown Services Inc. is a New York/LA-based service that connects agents with casting directors by creating a list of the principal characters per show. She will also put audition notices in *Backstage*, a New York City-based newspaper that caters to entertainment industry professionals. Auditions begin in late March.

"January - March is also the only block of time we have to do major renovations to the property when there isn't a cast here," said Paul Allan. This year the box office was renovated. Last year, four bathrooms in the major housing unit were rebuilt. "We probably house over 250 different people each year, an entirely different cast for every show - musicians, crew, and artistic staff. We are under strict guidelines from New York State and Suffolk County as to how large a bedroom can be, lifesaving equipment in each room, emergency lighting, etc., all these considerations have to be taken into account before we can think about adding a room." Paul continued. All smoke detectors and carbon monoxide detectors must be tested. The staff kitchen, with commercial refrigerators, freezers, washers and dryers is on the premises, and that facility was also renovated recently.

April arrives. Spring cleanup is something you do on weekends, but Gateway has five acres of lawns, flowerbeds, walkways and driveways. Our landscaping company spends weeks sweeping driveways, planting and mulching. Tree limbs that have fallen have to be cut up and removed, over forty zones of lawn sprinklers are tested and put back in service, the fishpond is cleaned out, the tent comes out of storage and is erected; tables and chairs are power-washed, the maintenance staff paints and

repairs the housing units, contractors fix leaky roofs, doors and windows that don't close properly. There are twenty or so buildings that need constant maintenance. "The average life of a roof is maybe fifteen years, so there is always a roof somewhere that needs to get redone." Paul said. Rehearsal studio floors have to be sanded and polyurethaned. Plumbing, shut down for the three harsh winter months, must be reconnected, and water turned back on.

After the fire sprinkler systems, alarm systems, and connections to Central Station are checked and maintained, various different agencies from New York State, Suffolk County, Brookhaven Town and Bellport Village inspect the premises at different times to ensure patron and resident safety.

On stage, lighting equipment undergoes yearly maintenance; each instrument is cleaned and sent to the shop for precise alignment and recalibration. Sound equipment and connections are tested. The shop's power tools are cleaned, sharpened, and oiled. The costume shop's commercial sewing machines and steamers are tested and old or broken items are replaced.

Stanley Schorr, the Company Manager, hires actors who are cast and oversees house cleaning and room assignments. As production manager, he also hires the tech crew and does set materials ordering for the coming months ahead. Gale Edwards, General Manager, after reconciling the accounts and expenditures from the past year all winter long, readies the payroll and contracts for the coming season.

Finally, it's May. The lilacs bloom and the wisteria begins to pop on the Gateway's windmill just as the actors, musicians, and artistic staff arrive in Bellport. The first sounds of pianos are heard and the tech shop saws start buzzing, all preparing for Opening Night. Reopening? Our doors are always open!

**THE BELLPORT**  
Steps away from the Gateway Playhouse

★★★★  
New York Times Review

159 South Country Road, Bellport, New York 11713  
(631) 286-7550

**Frank R. Egan, DDS, PC**  
Certified, American Board of Orthodontics



Hospital Road  
Professional Center  
250 Patchogue-Yaphank  
Road - Suite 14  
East Patchogue, NY 11772  
(631) 289-3990

[www.TeethOnTheMove.com](http://www.TeethOnTheMove.com)



## Who's Who

### JENN MORSE

(Julie) is so excited to be playing one of her dream roles since childhood. Favorite credits include Martha Jefferson in *1776* (Casa Manana), Charlotte in *Charlotte...Life or Theatre?* (Prince Music Theatre), Mina in *Dracula, the Musical* (Lajolla Playhouse), and Guenevere in *Camelot* (Casa Manana). Thank you to her family and friends for their love and support.

**McCREE O'KELLEY** (*Carnival Boy/Ensemble*) began his dance training with Ann Brodie and the Carolina Ballet in his hometown of Columbia, SC. He then went on to study at the School of American Ballet and the North Carolina School of the Arts. McCree was a member of the Atlanta Ballet where he performed soloist roles in several ballets.

He was Mr. Mistoffelees in the National Tour of *Cats*. Other credits include Tokyo Disney, *The Music Man* at Helen Hayes Theater Co., and the off-off-Broadway production of *Pam Ann*.

**REGINA PELUSO** (*Ensemble*) is a graduate of the Boston Conservatory of Music with a BFA in Musical Theatre. Regional Credits include The Guthrie Theatre, Carousel Dinner Theatre, Minneapolis Childrens' Theatre, and The Rand Barn Theatre. Favorite shows include *The Nutcracker* with Ballet Minnesota, *The Importance of Being Earnest* (Cecily), *Carousel* (Louise), *Brigadoon* (Bonnie, Jean), *The Secret Garden* (Mary), *The Grapes of Wrath*, *Chicago*, and *Cabaret*. Thanks to my family for their constant love!

**MICHELLE PUCCI** (*Louise/Ensemble*) is a recent graduate of East Carolina University with a BFA in Musical Theatre. Her mainstage shows there include: *Gypsy*, *The Music Man*, *South Pacific*, *My Fair Lady*, *The Bacchai*, *The Comedy of Errors* and *Spring's Awakening*. Summer Stock credits include: *The King and I* and *Horn in the West* Historical Outdoor Drama. She is thrilled to be a part of the show and would like to thank her family for their support.

**ERIC SHOREY** (*Ensemble*) Eric is excited to make his debut with Gateway. European/National tour: *West Side Story* (A-rab), *Cats* (Pouncival, Swing). Regional credits include: *Cats* (NSMT), *Chicago*, *Big River* (Huck), *The Fantasticks* (Matt), *West Side Story* (Baby John), and *Crazy For You*. Love and thanks to friends and family.

## STAGE DOOR Dance SCHOOL OF

### Dance Camp

Session I July 5 - July 22  
Session II July 26 - August 12

### Fall Registration Begins

Week of August 9

25 PATCHOGUE-YAPHANK ROAD • EAST PATCHOGUE

## 654-8858

James & Diane Giallino

## PAPA NICKS PIZZA



Gyros, Salads, Heros, Dinners  
Daily Lunch Specials

286-6400

117C-South Country Road, Bellport Village, NY



## EDWARDS.

FULLY INVESTED IN OUR CLIENTS..

### Serving Investors Since 1887

Stocks • Bonds • Mutual Funds • CDs • IRAs  
Options • Insurance • Annuities • Financial Planning

Richard B. Miller • Vice President - Investments  
Antoinette R. Giordano, MBA • Senior Registered Financial Associate  
Trusted Advice • Exceptional Service  
222 East Main Street, Smithtown, NY 11787  
631-265-1400 x 252 • 800-348-3420 x 252  
richard.miller@edwards.com

A.G. Edwards & Sons, Inc. Member SIPC Member New York Stock Exchange, Inc.

## COSTUME WORLD



Founded in 1975 by Marilyn Wick, Costume World's 35,000 sq. ft. flagship store is located in Deerfield Beach, Florida and serves as their main facility for theatrical productions. In addition, they maintain over 20,000 sq. ft. between their Dallas and Pittsburgh branches.

Costume World has over 500 shows, including original Broadway wardrobes, ready to be customized for your productions, whether you decide to rent or to own.

For over 27 years, they have been designing musicals and operas and answering the needs of their prestigious clientele.

Complete theatrical packages include rental rates, measurement forms, costume plot, costume rental agreements, as well as any photography requests.

Conveniently, Costume World's costume and opera plot service is available at [www.costumeworld.com](http://www.costumeworld.com) or call toll-free at 1-800-423-7496.

# South Country Inn

## Fine Italian and Continental Cuisine

Moderately Priced Dinners  
Starting at \$12.95

Early Bird Specials Available  
Daily 3:30 - 6 PM

**LUNCH SPECIALS**  
Starting at \$9.95

Served from 12-3 p.m.

Complimentary glass of wine with your lunch or dinner when you present show tickets.

A short drive from both theatres on South Country Road.  
Special attention to our theatre goers.

Parties & theatre groups welcome.

Stop for dessert or a cocktail after the show.

Open Tuesday - Thursday,  
Noon - 11 PM

Friday - Sunday,  
Noon - Midnight

Reservations recommended

668 South Country Rd.  
East Patchogue

## 758-1919



# Bellport CHOWDER HOUSE



*An Eating and Drinking Tradition*

**FULL MENU**

**FULL BAR**

Open Daily For Lunch and Dinner  
Seven Days A Week

Sunday - Thursday till 11:00 p.m. Friday & Saturday till Midnight

**SPECIALIZING IN FRESH LOCAL SEAFOOD  
AT AFFORDABLE PRICES**

*Before and After the Show You'll Want to Meet and Eat At  
THE CHOWDER HOUSE*

**TAKEOUT**

**CATERING**

19 Bellport Lane • Bellport Village • 286-2343

## Who's Who

**BRIAN SLAMAN** (*Ensemble*) is thrilled to be a part of *Carousel*, his first production with Gateway Playhouse. He previously danced in *Encore!* at Tokyo Disney Sea, in an industrial show for Rite-Aid (New Orleans), and with the Toledo Ballet Company in *Peter Pan* (Peter), *Sleeping Beauty* (Bluebird), *Cinderella* (Jester), *The Nutcracker*, and *Carmina Burana*. Thanks to Mom, Dad, Christie, Joyce, and Tom for everything!

**MATTHEW WINNEGGE** (*Ensemble*) is thrilled to be making his debut at Gateway Playhouse. Most recently Matthew has performed in several shows at the Fireside Theatre, including *Hello Dolly!* (Barnaby) and *The Sound of Music* (Rolf). Other regional credits include *A Chorus Line* (Mark), *Brigadoon* (Harry Beaton) and *West Side Story* (Baby John). He has also been seen on ABC Daytime's *One Life to Live*. Love to his family and friends.

**PAUL ALLAN** (*Producer*) - For more than 20 years, Paul has produced successful shows from the East End to the Far East. Born into the theatrical family that started Gateway, Paul became involved in the theatre at an early age. In addition to his career as a producer, Paul co-founded a successful touring company, which mounted dozens of productions across the US and as far away as Taiwan and Singapore. Serving as technical director, sound engineer and master electrician for numerous productions when he first began working in the industry provided Paul with invaluable knowledge and hands-on experience. His expertise allowed him to act as consultant and advisor on the restoration and renovation of Patchogue Theatre, which under Gateway's management, reopened in 1998 with *Nutcracker On Ice*. Gateway still

stages shows there several times each year, with *Cats* and *Fosse* being this season's productions.

**BOB DURKIN** (*Director*) Bob's work has been represented both nationally and internationally in tours of *Big River*, *The Unsinkable Molly Brown*, *Dreamgirls*, *Seven Brides for Seven Brothers*, *Anything Goes*, *Purlie*, *The Goodbye Girl*, *One Mo' Time*, *Little Shop of Horrors*, *They're Playing Our Song*, *Hello Dolly*, *Crazy for You*, and *Ain't Misbehavin'*. In 1997 he was the recipient of the Connecticut Critic's Circle award for outstanding choreography for his work on the national tour of *Seven Brides for Seven Brothers*. He was Tommy Tune's co-choreographer for the pre-Broadway workshops of Irving Berlin's *Easter Parade*, starring Tommy Tune and Sandy Duncan, in both Sydney, Australia and in New York City. He also worked many years with the late Broadway director Phillip Oesterman. Bob's work has been seen by audiences in Brazil, Columbia, Spain, Italy, Portugal, Germany, Austria, Finland, Ireland, Scotland, Singapore, Hong Kong, Malaysia, all over the United States and in Canada. Bob is a graduate of The Boston Conservatory of Music.

**JEFFREY BUCHSBAUM** (*Musical Director*) is very pleased to return with *Carousel*, which marks his 14th production at Gateway Playhouse, including *Ragtime*, *Jekyll & Hyde*, *The Scarlet Pimpernel*, and last season's *Miss Saigon* and *Phantom*. Other recent credits: *Broadway Rhythm*, produced in China for the Macao International Music Festival (also conceived, arranged, and orchestrated); *The Magic of Musicals*, produced in Athens, Greece (also conceived, arranged); *The Skinflint* (Repertory Theatre of St. Louis). In New York: A



## Who's Who

*Dash of Rosemary* (also arranger); *Tallulah's Party* with Tovah Feldshuh (Kaufman Theatre); and *Michael Valenti's Song by Song* (West Bank). Tours include: *Phantom of the Opera* (European/South American), *A Chorus Line* (European), *Romance, Romance* (National); *Song and Dance* (National); *Titanic* (National). Jeffrey recently returned from Eastern Europe where he conducted a series of musical theatre recordings, four with the Warsaw Radio Philharmonic in Poland and two with the Pecs Philharmonic Orchestra in Hungary. Jeffrey is also a voice teacher and coach, and has taught at New York University, Baruch, Middlesex and Mercer Colleges.

**SHARON R. HALLEY** (*Choreographer*) began her career at the world-renowned St. Louis Municipal Opera where she had the unbelievable opportunity of working alongside every major musical theatre choreographer of the twentieth century, including: Agnes DeMille, Jack Cole, Michael Kidd, Bob Fosse, and Ron Field. When she arrived in New York she became the youngest member of the Broadway ensemble of *Cabaret*, followed by the Broadway companies of *Hellzapoppin'* and *Funny Girl*. Sharon danced alongside Gene Kelly and Donald O'Connor. She left her performing days behind to become a choreographer in her own rite and went on to stage the original New York production of *Jerry's Girls* and the national tour which starred Carol Channing, Leslie Uggums and Andrea McArdle. Her other New York credits include *The New Moon*, *The Desert Song*, *The Merry Widow* (all at New York City Opera) and *Elizabeth & Essex*, starring Estelle Parsons. She choreographed the National Tour of *Carousel* (with Rex Smith) and Regional Productions of:

*Peter Pan*, *Bye Bye Birdie*, *South Pacific*, *Anything Goes*, *Can Can*, *Shenandoah*, *Music Man*, *Finian's Rainbow*, *Oklahoma!*, *Sweeney Todd*, *Fanny*, *Robert & Elizabeth*, *Oliver*, *The King and I*, *Mame*, *Where's Charlie*, *Brigadoon*, *Phantom of the Opera*, *Gigi*, *Guys and Dolls*, *Man of La Mancha*, *Damn Yankees* among others at some of the country's finest theatres, including: Paper Mill Playhouse, Sacramento Light Opera, Starlight, Theatre Under the Stars, The Fifth Avenue Theatre, McArter, and the Walnut Street Theater. She staged the world premiere of the Rick Hawkins musical *Lunch*. PBS filmed her productions of *Showboat*, *The Merry Widow*, and *The New Moon* for Great Performances and she was the Resident Choreographer for the Robert Preston, Rosemary Harris mini series, *Chisolm*. She has been a Guest Artist for the Canadian Government in Fredericton, New Brunswick and Theatre Des Westins in Berlin, Germany. She most recently choreographed *Ain't Misbehavin'* for Bristol Riverside Theater in Philadelphia and is teaching movement at Mannes College in New York. Ms. Halley is the proud mother of Christopher, Gretchen, Amanda, and Ebony.

**ROBIN JOY ALLAN** (*Casting and Artistic Director*) is grateful to have lived and breathed the arts all her life, beginning with performance as child actress here at Gateway as well as on the road, to traveling with a rock band as vocalist and keyboardist. Her background running the family business, included running the summer teen workshops, musical directing, writing, directing, choreographing and eventually, producing. After moving to NYC, she began a career in casting that took her to the West Coast. She was the Associate Casting Director on the feature

## The BARN MUSEUM

Home of Long Island History

Special Exhibits

Second Largest Collection of Painted Tinware in the United States

## THE POST-CROWELL HOUSE 1833

A Fine Collection of Period Furnishings



THURSDAYS, FRIDAYS & SATURDAYS, 1 TO 4:30P.M.



Bellport-Brookhaven Historical Society

## EXCHANGE SHOP

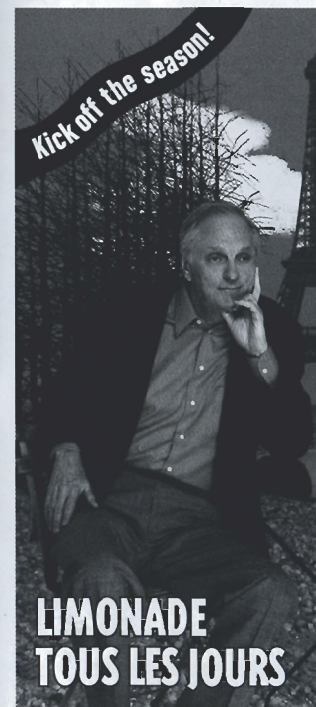
Antiques & Decorative Accessories

Thurs., Fri., & Sat., 11A.M - 5P.M.

Consignments received Wednesdays, 10 A.M. to 12 Noon

(We encourage the donation of fine antiques which are fully tax deductible)

ALL LOCATED AT: 31 BELLPORT LANE, BELLPORT - 286-0888



LIMONADE TOUS LES JOURS

## TARGET MAINSTAGE SEASON

### LIMONADE TOUS LES JOURS

By Charles L. Mee  
Directed by Zoe Caldwell  
With Alan Alda, Eric Bondoc, Nicole Leach

May 25-June 6

An effervescent and whimsical new romantic comedy about the bittersweet pleasure of living in the moment.

### BAY STREET THEATRE

Long Wharf, Sag Harbor  
Box Office: Tues.-Sun., 11-6pm

631-725-9500

### ROUGH CROSSING

By Tom Stoppard  
Directed by Daniel Gerroll  
With Dylan Baker, Christine Ebersole, Edward Hibbert, Richard Kind, Tony Roberts  
June 15-July 4

### AUNTIE MAME

By Jerome Lawrence & Robert E. Lee  
Based on the novel by Patrick Dennis  
Directed by Richard Sabellico  
With Charles Busch  
July 13-August 1

### ONCE ON THIS ISLAND

Book & Lyrics by Lynn Ahrens  
Music by Stephen Flaherty  
Directed by Marcia Milgrom Dodge  
August 10-September 5

www.baystreet.org



# On The Waterfront

On the Patchogue River Overlooking  
the Great South Bay

Join Us for  
a Lunchtime  
Cruise!



Dance The  
Evening  
Away!

## Aboard the River Queen Mary

**EVERY SUNDAY**  
Departing at 11:30 a.m.  
Unlimited Beverages,  
Finger Foods & More!

**\$38.<sup>95</sup>**  
per person  
+Tax & Gratuity

Make Your  
Reservations Now!  
Seating is limited.  
40 passengers, max.  
Cruise 11:30 a.m.-2:30 p.m.

**EVERY WED.**  
Departing at 6:00 p.m.  
Unlimited Beverages,  
Finger Foods & More!

**\$47.<sup>95</sup>**  
per person  
+Tax & Gratuity

Make Your  
Reservations Today!  
Seating is limited.  
40 passengers, max.  
Cruise 6 p.m.-9:30 p.m.

The River Queen Mary  
is also available  
for Charter at all other times.

The Outdoor Gazebo  
Is Open Everyday!

**LIVE MUSIC EVERY  
FRIDAY & SATURDAY**

Sunset  
Happy Hour  
Mon. - Fri.  
4:30-6:00 p.m.

**OPEN 7 DAYS A WEEK  
YEAR ROUND**

82 BRIGHTWOOD ST.  
PATCHOGUE

**654-2233**

# SEARLES GRAPHICS INC

offering a full spectrum of  
printing and creative services



## QUALITY PRINTING & GRAPHIC DESIGN

56 Old Dock Road  
Yaphank, NY 11980  
Tel 631.345.2202  
Fax 631.345.0975

e-mail: mailbox@searlesgraphics.com  
www.searlesgraphics.com

## Who's Who

**JOVON E.**

**SHUCK** (Production Stage Manager) Broadway: *Noises Off*, *The Graduate*; New York: *The Radio City Christmas Spectacular*, *The Seagull* (NY Shakespeare Festival/Public Theatre), *Lyrics and Lyricists Series* (92nd Street Y) and three seasons with Actors' Studio.

films; *Parenthood*, *When Harry Met Sally*, *Lord of the Flies*, *Side Out* and *Ghost*. She also cast several television series, pilots and MOW's. Along with her Artistic and Casting Director duties here, she is also the force behind Gateway's Acting School Division. Robin's appreciation is for her family, her devotion is for her second family of students, her joy is in her daughter, Hayley Lynn, named after Harry and Libby, her maternal grandparents, who are her constant source of inspiration and a true example of eternal love.

**DOUG HARRY** (Lighting Designer) is happy to be designing another Gateway production. His past credits here include last year's *Miss Saigon*, *Jesus Christ Superstar*, *Scarlet Pimpernel*, *Titanic* and *Dracula the Rock Opera*. Doug holds a degree in Theatre Production and Stage Management from the Guildhall School of Music and Drama in London, UK. He is currently a freelance designer/programmer for Mohegan Sun Casino, General Motors and Six Flags theme parks, to name a few.

**ALLEN WILSON** (Costume Designer) graduated with a Degree in Theater from the University of St. Louis. Among his many theatrical accomplishments he has directed, produced and designed over 200 stage productions. Formally the resident costume designer for The Mark Two Dinner Theater, Allen moved to COSTUME WORLD in 2001, one of the countries largest costume rental houses based in south Florida. He has since designed many new shows for professional theatres such as the Orlando Broadway Theatre, Light Opera Works and Art Park, and the tours of *State Fair*, *Singin' in the Rain* and *Titanic* for Candlewood Productions. Allen is very pleased to once again be working with the Gateway Playhouse where last summer, his designs were seen in *On the Town*.

## HTM LANDSCAPING COMPANY

is the official landscaper of  
*Gateway Playhouse*

all work done by owner  
Nicholas J. Harding

**631-475-0636**

## Chachama Grill

Upscale American Cuisine

655-8 Montauk Hwy.  
East Patchogue, NY 11772

**631-758-7640**

Pre-Fix available 5-6 pm  
Monday - Sunday

**ANY APPETIZER  
ANY ENTREE  
ANY DESSERT**

from our regular menu!

Lunch: Monday - Friday 11:30 am - 2:30 pm  
Dinner: Monday - Sunday Starts at 5:00 pm

Reservations Recommended

Chef/Owner - Elmer Rubin  
formerly of Mill River Inn, Topo Honey & Heritage



69 East Main Street • Patchogue, NY 11772

PHONE 475-4774

Fax 207-0267

**TRIO**  
FINE FOOD & DRINK

KEVIN STAHL - CHEF/OWNER

PLEASE CALL FOR RESERVATIONS

**THE VARIETY MART**

An Old Fashion

Five & Ten

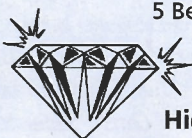


138 Main Street  
Bellport, New York 11713

631-286-2210

**BELLPORT JEWELERS**

5 Bellport Lane, Bellport  
286-7700



**We Buy & Sell  
Highest Prices Paid!**

Jewelry, Coins, Stamps, Gifts  
Repairs on all jewelry & watches on premises  
Authorized Citizen & Movado dealer  
[www.bellportgalleries.com](http://www.bellportgalleries.com)

**ACTING AND  
MUSICAL  
THEATRE  
TRAINING**

all levels of acting for all ages thru adult



**GATEWAY  
ACTING SCHOOL**

*Now Enrolling*

LEARN FROM THE PROFESSIONALS!

**286-9014**



Catch all the Acts in **2004**

**Swingtime  
CANTEEN**

June 16 - July 3

**CATS**

July 7 - July 24

At the  
Patchogue  
Theatre

**GYPSY**

July 28 - August 14

**fosse**

August 18 - September 4

At the  
Patchogue  
Theatre

**CABARET**

September 8 - September 25



**American Airlines**

Official Airline for the Gateway Playhouse

Call or Log on for more information

631-286-1133 • 1-888-4TIXNOW

[www.gatewayplayhouse.com](http://www.gatewayplayhouse.com)



## GATEWAY PLAYHOUSE STAFF

Executive Producers .....	Ruth and Stan Allan
Producer.....	Paul Allan
Associate Producer .....	Jeff Bellante
General Manager.....	Gale Edwards
Casting/Artistic Director .....	Robin Joy Allan
Company Manager/Production Manager.....	Stanley Schorr
Director .....	Bob Durkin
Musical Director.....	Jeffrey Buchsbaum
Stage Manager.....	Jovon Shuck
Lighting Designer .....	Doug Harry
Costume Designer .....	Allen Wilson
Technical Director.....	Michael Boyer
Master Electrician .....	Brian Loesch
Sound Engineer .....	Colle Bustin
Costume Coordinator .....	Marianne Dominy
Prop Master.....	Cliff Andrea
Asst. Company Manager .....	Michael Critchlow
Asst. Technical Director .....	A.D. Garrett
Asst. Master Electrician.....	Mike Gugliotti
Wardrobe Assistants .....	Jody Denney & Kelly O'Brien
Wig Stylist .....	Jody Denney
Carpenters .....	Elan Bustin, Katya Khellblau, Tim O'Reilly & Joe Sturek
Interns .....	Alexis Karpf, Keith Redmond
Director of Group Sales.....	Annmarie Allan
Publicist .....	Linda Unger
Administrative Assistant .....	Enrico Spada
Casting Associate .....	Jessica O'Sickey
Box Office/ House Manager .....	Laurie Parr
Box Office Staff.....	Erika Bennet, Melissa Boyle, Joanne Famiglietti, Jodi Grega, Nadine Hazard, Amy Mark, Greg Monteith, Jennifer Neumann, Michael Rumaker, Amy Prokop, Pam Stewart
Front of House Manager.....	Bob Nofi
House Staff.....	Michael Gandolfo, Martin Laverty, Jose Moreno, Michael Moreno, John Philpot, Marie Rachek, Philip Sheridan, Rita Wehner
Maintenance .....	Don Harrison
Cleaning Contractor .....	Fiori Enterprises Inc.
Music Contractor .....	Jeff Hoffman
General Counsel .....	Ann L. Nowak & Associates
Production Photographer .....	Patrice Casanova
Sound Consultant .....	Dominic Sack
Trucking Supervisor.....	John Shroeder
Grounds Maintenance.....	HTM Landscaping Company

**Gateway Playhouse would like to thank our volunteer staff for their dedication and support. It is much appreciated.**

Marie Rachek - Head Usher

Ushers - Al Aberg, Missy Atchue, Shirley Bleacher, Carmela Aiosa, Olga Belz, Anne Burke, Betty Entress, Alice Friedman, Paul Friedman, Marian Harrison, Mary Lanier, Sue Nemet, Dolores Reeves, Alice Rucker, Terry Seng, Bella Triola, Nina Uchida, Carol Weinstein & Bella Vararano

**IF YOU WOULD LIKE TO JOIN OUR VOLUNTEER STAFF CALL 286-0555**

**WARNING** - The photographing or sound recording of any performance is strictly prohibited. Gateway Playhouse offers a wireless sound enhancement system for the hearing impaired. Inquire at the box office for more information.

**FIRE NOTICE** - The exit indicated by a red light and sign nearest to the seat you occupy, is the shortest route to the outside. In the event of fire or other emergency, please do NOT run. WALK to that Exit. However, under normal circumstances, when leaving the Theatre, use the center rear exits. SMOKING is prohibited in the BUILDING, as required by the Suffolk County NO SMOKING Ordinance. Smoking in any area designated "No Smoking" renders the offenders subject to a fine, or imprisonment, or both.

# Children's Theatre

Live Musical Shows! All Seats \$8.50

## The Little Mermaid

Taubenslag Productions



Patchogue Theatre  
Saturday, July 10 -  
10:30AM & 1PM

## Beatrix Potter's - Jemima Puddleduck and The Bad Rabbit

TheaterworksUSA  
Lifesize Puppets



Patchogue Theatre  
Friday, July 16 -  
10:30AM & 1PM

TheatreworksUSA

JIM WEST'S

## DINOSAURS!



Patchogue  
Theatre  
Friday, July 23 -  
10:30AM & 1PM

## Peter Pan

Gateway Playhouse



at Bellport  
Friday, August 6 - 10:30AM  
Saturday, August 7 - 10:30AM & 1PM  
Friday, August 13 - 10:30AM & 1PM  
Saturday, August 14 - 10:30AM

## Alice in Wonderland

Yates Musical Theatre



Patchogue Theatre  
Friday, August 20 -  
10:30AM & 1PM

## STUART LITTLE

Rochester Children's  
Theatre



Patchogue Theatre  
Friday, August 27 -  
10:30AM & 1PM

**WE NOW HAVE RESERVED SEATING FOR THE CHILDREN'S THEATRE!**

631-286-1133 • 1-888-4TIXNOW • [www.gatewayplayhouse.com](http://www.gatewayplayhouse.com)



Sorry, Children ages 2 and older only  
No Infants Please.  
Shows subject to change without notice.

**ON SALE  
NOW!**