

American Airlines is proud to sponsor the arts in communities around the world. We are, of course, equally proud to offer you service to more than 250 cities in 40 countries worldwide. American Airlines has More Room Throughout Coach\* on more planes than any other airline.\* To make reservations, visit AA.com or call American at 1-800-433-7300 or call your travel agent.



Encore! Encore! **American Airlines**



\*You will find more room on all of our more than five hundred 777, 767, 737, MD80 and F100 aircraft; not available on A300, 757 or American Eagle. Some destinations are served by American Eagle, the regional airline affiliate of American Airlines. American Airlines, American Eagle, AA.com and More Room Throughout Coach are marks of American Airlines, Inc. Schedules subject to change without notice.

# *Gateway* **PLAYHOUSE**

JUNE 16 - JULY 3



SUMMER 2004

# PLAYBILL

# W<sup>m.</sup> J. O'Neill

Sales Exchange Co., Inc.  
Jewelers and Collateral Loanbrokers



*Classic and Contemporary  
Platinum and Gold Jewelry designs  
that will excite your senses.*

One East Main St., Patchogue 631.289.9899  
Mention this ad for 10% discount on purchase



- *The Pavilion Room and Bar overlooking the Swan River is now open for lunch and dinner daily.*
- *Live entertainment every Friday and Saturday night (see our website for details).*
- *Happy Hour every Friday from 4-6, featuring complimentary buffet and drink specials.*
- *\$5 Martinis Tuesday through Friday from 4-6 at the bar.*
- *Serving dinner until 10:00 Tuesday through Thursday, 11:00 Friday and Saturday. Late menu available until 12:00 Friday and Saturday.*
- *Join us after the show for dessert and one of our specialty coffees.*
- *Sunday Brunch.*

**Weekday Specials:** Tuesday – Pasta Specials  
Wednesday – Lobsterfest  
Thursday – Prime Rib Special



Chapel Avenue & First St., Patchogue, NY 11772  
631.475.9843 • [www.pinegroveinn.com](http://www.pinegroveinn.com)

**Long Island's First Choice For Cosmetic Surgery**  
 Featured this summer in Vogue, Glamour, Allure and Self Magazines



Whether it is **minimal** incision surgery or an **extreme** makeover, **Cosmetic Surgery of NY** can help you achieve the look you've always dreamed of. **For over 25 years**, we have specialized in procedures such as facial rejuvenation, breast surgery, tummy tucks, body sculpting and skin care. With a fully accredited on site surgical suite and board certified surgeons on staff, **Cosmetic Surgery of NY** provides the highest quality care.

631-473-7070

CALL TODAY FOR YOUR COMPLIMENTARY CONSULTATION!



**COSMETIC SURGERY of NEW YORK**

4616 Nesconset Highway • Port Jefferson Station, NY 11776

www.cosmeticsurgeryofny.com



**Who Says "Roughin' It"  
 Has To Be Rough?**

**New & Pre-Owned  
 Trailers & Motor Homes**

Your Next Vacation Can Be Comfortable and Affordable!

Go to [www.tagmotors.com](http://www.tagmotors.com) To View Our Complete Line

★ GREAT PRICES ★ GREAT SELECTION ★

★ A VEHICLE FOR EVERY BUDGET ★

RV Sales Service & Parts • LONG ISLAND'S #1 RV CENTER

**TAG MOTORS & RVs**

**475-1838** 1601 RTE. 112 MEDFORD

Across From Meat Farms

Open for Lunch & Dinner  
 Tuesday through Sunday

**LOUIS XVI**

Reservations  
 Recommended



Voted the No. 1 restaurant overall on LI, as well as No. 1 for Decor – devotees swear it could rival "the Palace of Versailles" – this "extravagant", "elegant" and "exquisite" "crown jewel" boasts "gorgeous views" of Great South Bay from its "beautiful setting on the water" in Patchogue; indulge in "extraordinary", "imaginative" New French cuisine "magnificently presented" by an "impeccable" staff; dip into the "kids' college fund" or "mortgage the house" if you must, but it's "worth every franc" for such an "incredible dining experience."

– Zagat Survey 2000 26 | 28 | 25 | \$57

600 South Ocean Avenue • Patchogue, 654-8970

**THE HARBOR SIDE**

"Incomparable Seafood Restaurant"

Open 7 Days a Week  
 at 11:30 a.m.

All Major Credit  
 Cards Accepted.

Complete Dinners  
 Everyday.



Highly Recommended:

\*\*\*

Newsday

Daily News

NY Post

The Practical Gourmet

**Complete Lunches\***

Served Mon. - Sat.  
 11:30 a.m. - 3:00 p.m.  
 Starting at \$7.95

**Complete Early Bird Specials\***

Served Mon. - Sat.  
 3:00 p.m. - 6:00 p.m.  
 Starting at \$13.95

**Sunday Specials**

Includes: Soup or Salad,  
 Potato, Vegetable, Dessert & Coffee  
 11:30 a.m. - 4:00 p.m.  
 Starting at \$9.95

\*Above specials not available for groups of 15 or more on holidays. Prices subject to change.

Special Rates for Theatre Groups from 20 to 125. Call for more information.

503 E. Main Street, Patchogue, New York

Located on the corner of E. Main St. (27A) and Phyllis Dr. • (631) 654-9290

Complete Dinners starting at  
 \$18.95 includes appetizer,  
 soup or salad, potato,  
 vegetable, dessert & coffee



# Bellport Orthodontics

## Braces for Children and Adults

- Free Consults for Children
- Preventive early childhood treatment
- Clear and invisible braces available
- Major credit cards accepted
- Payment plans available
- Most insurance plans accepted

**Dennis Angelillo, DDS 286-7651**

1 Station Ct. (formerly 30 Station Rd.), Bellport • Located in the Village of Bellport

# Swezey

FUEL CO., INC. - EST. 1919

## Suffolk's Largest Family Owned Oil Company

- Automatic Oil Delivery Service
- 24-Hour Emergency Service
- Budget Plans That Pay You Interest
- Expert Installation Of Boilers, Burners, Hot Water Heaters & Pool Heaters



# 475-0270

51 RIDER AVE., PATCHOGUE

# CAVANAUGH'S

"Let's Have Fun" Est. 1986

Serving Lunch Daily Starting at 11:30  
Dinner Served Every Night

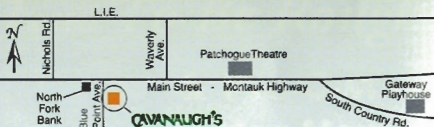
Dining Room Open Sunday - Thursday Till 11 PM  
Friday And Saturday Till 12 Midnight

### DINING SPECIALS

Mondays - 2 For 1 Chicken Wings  
Tuesdays - 20 Oz. Porterhouse \$12.99  
Thursdays - Prime Rib \$12.99

### Kitchen Open

Sunday - Thursday Till 12 Midnight  
Friday and Saturday Till 2 AM • 19 TVs - Quick Draw



255 Blue Point Avenue, Blue Point  
631-363-2666

# A Letter from the Producer

Welcome to the 54th season at Gateway! Our mission remains, to present Broadway Musicals with a high standard of excellence for our audiences to enjoy for the first time, or to see again - anew. Today, live theatre must compete with less expensive and readily obtainable entertainment alternatives like "Reality" TV Shows, DVD rentals, Internet media, and the latest summer blockbuster. However, as anyone who saw last year's *Miss Saigon* will attest, there is nothing like the thrill of being swept up in the energy of a live performance skillfully executed! We pray younger generations will keep this art form alive and hope theater enthusiasts will continue to bring their children and children they teach, to appropriate shows - having scheduled our second annual "Students Bound For Broadway" series of morning matinees for school groups. We continually strive to keep the medium fresh with new takes on classic musicals, like this year's *Carousel*, *Cypsy*, and *Cabaret*, by casting against stereotype with non-traditional performers, creating new set design and lighting concepts, and implementing new orchestrations when approved by licensing organizations. Whenever possible, we try to obtain the rights to new pieces, and this year present the Long Island premiere of *Cats* and the rarely staged *Swingtime Canteen*. We are thrilled to be the first theater in the nation to produce its own version of *Fosse* after its Broadway run and the National Tour. Your patronage is appreciated and essential in our quest, whether this is your first visit, or your hundred-and-first. Enjoy the show!

Paul Allan

Want to escape the everyday and have fun?

Try a Long Island Rail Road Manhattan Getaway

For details pick up a brochure, call 631-231-LIRR or log on to [www.mta.info](http://www.mta.info)

Long Island Rail Road



- Citizens of Humanity
- Milly
- Laundry
- BCBG
- Juicy
- A.B.S.
- Nanette Lepore
- Womyn
- Michael Stars
- Theory
- Shoshanna
- Tommy Bahama
- Women's & Men
- Lilly Pulitzer
- Flax
- Brighton
- Roxy
- Allen Allen
- Nicole Miller



**Debra Canavan**  
**CLASSICS**  
*Casual, Career and Cocktail*  
 53 Main Street • Sayville  
 631.563.9385

Free Checking.  
 Free gift.  
 Better bank.



Open an account today.

**Bellport Office**  
 20 Station Road,  
 Bellport, NY 11713  
 631-286-3800

**Patchogue Office**  
 325 E. Main St.  
 Patchogue, NY 11772  
 631-475-2600

**Michael Pollmann** -  
 Assistant Vice President

**Joseph P. Zaffuto** -  
 Vice President



The world's local bank

us.hsbc.com 1-800-975-HSBC

Issued by HSBC Bank USA ©HSBC Bank USA 2004

*Gateway*  
**PLAYHOUSE**

Presents

# Swingtime CANTREEN

Book by Linda Thorsen Bond, William Repicci, and Charles Busch  
 Orchestrations and Vocal Arrangements by Bob Mc Dowell  
 Special Material by Dick Gallagher

with

**PHYLLIS GESSLER**  
**SARAH STILES**

**TRUDI POSEY**

**LEENYA RIDEOUT**  
**ALICE VIENNEAU**

Producer  
**PAUL ALLAN**

Associate Producer  
**JEFF BELLANTE**

General Manager  
**GALE EDWARDS**

Artistic Director  
**ROBIN JOY ALLAN**

Company Manager  
**STANLEY SCHORR**

Production Stage Manager  
**ERIN KRAUS**

Set Designer  
**MICHAEL BOYER**

Costume Coordinator  
**MARIANNE DOMINY**

Lighting Design  
**MARCIA MADEIRA**

Costume Design  
**ALLEN WILSON**

Musical Direction by  
**PHYLLIS GESSLER**

Choreographer  
**WILLIAM B. HUBERT II**

Directed and Staged by  
**BARRY McNABB**

Produced by Special Arrangement with William Repicci & Michael Minichiello  
 In Association with Patricia Greenwald, Ken Jilson and Robert Massimi.  
 Original Production Directed by Ken Elliot

# La Margherita

*The Original Brick Oven Pizza*

Theatre Groups Welcome

Complimentary Appetizer with your lunch or dinner entree  
 when you present your show tickets

1229 Station Road, Medford • 924-0048 Fax 924-0094



**ART COLEMAN 475-1733**  
**878-2010**

**Family Owned and Operated For Over 50 Years**

- Dedicated to Honest & Reliable Service
- Precast Cesspools Installed
- Portable Toilet Rentals

1 Chapel Avenue, East Patchogue, New York 11772

# Swingtime CANTEREN

## CAST OF CHARACTERS

(in order of appearance)

Marian Ames .....ALICE VIENNEAU\*  
 Lilly McBain.....LEENYA RIDEOUT\*  
 Jo Sterling.....TRUDI POSEY\*  
 Topeka Abotelli .....PHYLLIS GESSLER  
 Katie Gammersflugel .....SARAH STILES\*  
 Swing Dancers.....ANNE-MARIE BRULE, BEVERLY DURAND\*,  
 MARK STUART ECKSTEIN\*, JEREMY LEINER\*,  
 MICHELLE MARMOLEJO, DORRELL AYQUINN MARTIN,  
 ROB REYNOLDS\*, ALISON SOLOMON

## SIDE MUSICIANS

Reeds .....MIKKI RYAN  
 Trumpet .....MARIA VASSALLO  
 String Bass.....CATHERINE O'MALLEY

**WARNING** – The photographing or sound recording of any performance is strictly prohibited. Gateway Playhouse offers a wireless sound enhancement system for the hearing impaired. Inquire at the box office for more information.

**FIRE NOTICE** — The exit indicated by a red light and sign nearest to the seat you occupy, is the shortest route to the outside. In the event of fire or other emergency, please do NOT run. WALK to that Exit. However, under normal circumstances, when leaving the Theatre, use the center rear exits. SMOKING is prohibited in the BUILDING, as required by the Suffolk County NO SMOKING Ordinance. Smoking in any area designated “No Smoking” renders the offenders subject to a fine, or imprisonment, or both.



The Musicians employed in this production are members of the American Federation of Musicians.



\*Actors employed in this production are members of Actors' Equity Association, the union of Professional Actors and Stage Managers in the United States.

**ssdc**

The Director/Choreographer is a member of the Society of Stage Directors and Choreographers, Inc., an independent national labor union.

Playbill Designed and Printed by Searles Graphics, Inc.



RESTAURANT

631.286.3300 • 14 Station Road • Bellport

## ASSOCIATE PRIME MEAT MARKET

A Full Line of Groceries,  
Meats & Poultry • Deli,  
Vegetables • Beverages



109 Maple Ave. Patchogue, NY 11772  
 Phone: (631) 475-1749  
 Fax: (631) 447-5086

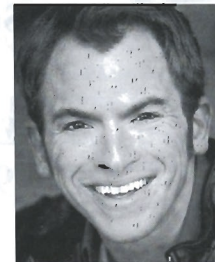
# The Cast



Anne-Marie Brulé



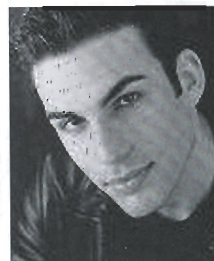
Beverly Durand



Mark Stuart Eckstein



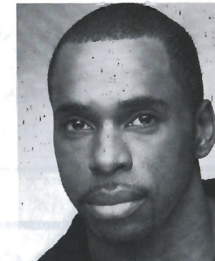
Phyllis Gessler



Jeremy Leiner



Michelle Marmolejo



Dorrell AyQuinn  
Martin



Catherine O'Malley



Trudi Posey



Rob Reynolds



Leenya Rideout



Mikki Ryan



Alison Solomon



Sarah Stiles



Maria Vassallo



Alice Vienneau



**We're like a bank-only better.  
If you live or work in Suffolk  
County you are now eligible to  
join Suffolk Federal Credit Union.**

**www.suffolkfcu.org**

**631-924-8000**

**Mortgages – Home Equity – Line of Credit**

**Business Accounts – Business Loans**

**Savings – Investments – Money Market**

**Before or After The Show**  
**Late Night Dinner • Dessert and Coffee**

*All Baking  
Done On  
Premises*



*Breakfast,  
Lunch and  
Dinner*

*Open 7 Days  
6:00 AM - 2:00 AM*

*Daily Specials*

**ROYAL OAK**

**Diner - Restaurant**

Station Road and Sunrise Highway - Bellport, New York 11713

TEL. (631) 286-5757

**SYNOPSIS OF SCENES AND MUSICAL NUMBERS**

**ACT I**

“I’ve Got a Gal in Kalamazoo” .....Dancers†  
 “Bugle Call Rag” .....Company  
 “Ac-Cent-Tchu-Ate the Positive,” “Praise the Lord and Pass the Ammunition” .....Marian and Company  
 “Hollywood Canteen” .....Marian, Katie, Lilly and Company  
 Andrews Sisters Medley: “Boogie Woogie Bugle Boy;” “Beat Me Daddy, Eight to the Bar;”  
 “Rhumboogie;” “Rum and Coca-Cola;” “Tico-Tico;” “Bei Mir Bist Du Schön;” “Hold Tight,  
 Hold Tight;” “Three Little Fishes;” “Pennsylvania Polka;” “In the Mood;” “Beer Barrel Polka;”  
 “Don’t Sit Under the Apple Tree” .....Marian, Katie, Lilly  
 “I Don’t Want to Walk Without You” .....Katie  
 “His Rocking Horse Ran Away” .....Topeka  
 “Truckin’” .....Dancers†  
 “Love Isn’t Born, It’s Made” .....Jo  
 “Daddy” .....Lilly  
 “A Nightingale Sang in Berkeley Square” .....Marian  
 “Thank Your Lucky Stars and Stripes” .....Company

.....  
**INTERMISSION**  
.....

**ACT II**

“Little Brown Jug” .....Dancers†  
 “Sentimental Journey” .....Topeka and Company  
 “Don’t Fence Me In” .....Marian and Company  
 “How High the Moon” .....Katie  
 “You’ll Never Know” .....Marian  
 “My Shining Hour” .....Topeka  
 “I’ll Be Seeing You” .....Jo and Company  
 “Sing, Sing, Sing” .....Company  
 “Keep the Home Fires Burning,” “Pack Up Your Troubles” .....Lilly and Company  
 “I’ll Be With You in Apple Blossom Time” .....Company  
 “Sing Sing Sing (Reprise)” .....Company†  
 “Beyond the Blue Horizon,” “You’re Off to See the World” .....Company

† Choreographed by William B. Hubert II

**Dennis P. O’Hara, D.C.**



**Office Hours By Appointment**  
**Phone: (631) 286-2300**

**16-2 Station Road, Bellport, NY 11713**

Est. 1967

**Therm-A-Trol Inc.**

**Air Conditioning/Heating Specialists**  
**• Sales & Service •**

**FRIGIDAIRE**

Heating and Cooling Products

Call Today For Your Appointment

363-6600

120 North Division Avenue,  
Blue Point

Fully Licensed and Insured

## Who's Who

**ANNE-MARIE BRULÉ** (*Swing Dancer*) began dancing at age 4. After Miss Donna's School of Dance she attended and graduated from Interlochen Arts Academy as a dance major. She went on to receive her BFA in performance and choreography from S.U.N.Y. at Purchase College. Regional credits include *Carousel*, *Best Little Whorehouse in Texas*, *Easter Parade* and *Nunsense II*. Anne-Marie is also a Lindy Hopper. She has won several competitions including the American Lindy Hop Championships in 1999. She has toured the country with Swing Dance America and continues to teach Lindy Hop at Dance Manhattan in NYC.

**BEVERLY DURAND** (*Swing Dancer*) Credits include *Swing!* (Broadway/Original Cast/Asst. Dance Captain),

*Swing!* First National Tour (Asst. Choreographer), *Forever Tango* (Broadway/World Tour), *Saturday Night Fever*, *The Netherlands* (Asst. Choreographer/Latin Feature), *Tango Magic* (PBS), 2000 Tony Awards (Featured Dancer), *Swango* (Helen Hayes Theatre, Nyack), Macy's Thanksgiving Day Parade, NBC Today Show, *Tango Vivo!* Beverly was most recently seen on PBS as a featured swing dancer with Mark Eckstein in *The National Memorial Day Concert*. Originally trained in ballet, tap, and modern, she has focused on partner dancing for over ten years and especially enjoys being tossed and spun around! "A special thanks to all my amazing partners!"

**MARK STUART ECKSTEIN** (*Swing Dancer*) is thrilled to be joining the cast

of *Swingtime Canteen!* He has appeared on Broadway in *Gypsy of the Year* as well as in the National Tour of *Swing!* Regional credits include *Swango..the Fusion* (Malibu), *Swing!* (Dance Captain), *Vanaver Caravan*, and *An Evening with Dudley Moore* at Carnegie Hall. Mark is a two-time American Lindy Hop Champion. Much love to friends and family for all their support.

**PHYLLIS GESSLER** (*Topeka Abotelli/Musical Director*) did her first show at Gateway in 1988 and has been back almost every year since. However, most audiences will not recognize her face. Instead, she's known for her head conducting (the hair really flies in a fast number) and her gloves. Twice before you may have seen her on stage. The first was as Sister Mary Steinway in *Nunsense*, and

secondly, as Vi Petty in *Buddy*. She has musical directed thirty shows for Gateway, including last season's *Kiss Me Kate*. When at home in St. Petersburg, Florida she teaches voice and musical directs at its Arts High School, and freelances at various theatres. She is a cancer survivor who enjoys cats and turtles.

**JEREMY LEINER** (*Swing Dancer*) University of Michigan Musical Theatre, Class of 2003. Off-Broadway: *Primrose*. Regionally has performed with Music Theatre of Wichita, Connecticut Repertory Theatre, West Virginia Public Theatre, and with the Disney Cruise Line. Favorite roles include: Houdini in *Ragtime*, Mendel in *Fiddler on the Roof*. Back at Michigan: Noah in *Children of Eden*, Ali Hakim in *Oklahoma!* With love

## Gateway Playhouse & Patchogue Theatre

We wish you a successful  
2004 season  
and continued  
success in all your  
worthy endeavors.



www.northforkbank.com  
Member FDIC

*Richard York*  
OF PATCHOGUE



631-475-1047  
14 South Ocean Ave.  
Patchogue  
Four Stores  
South of Main St.

Quality Footwear for the Entire  
Family Since 1927

- Helpful, Friendly Service
- Areas Largest Selection  
of Sizes & Widths AA-EEEE

Rockport, Easy Spirit, Florsheim, New Balance, Stride Rite, Teva, Timberland, Skechers, Munro, Dexter, Keds, Reebok, Dyeables, Topsider, Soft Spots, Clarks, Naturalizer, Hush Puppies, Daniel Green, Foamtreads, etc.

**10% OFF** any purchase  
with ad only

Excludes Easy Spirit, Dr. Martens & other offers. Expires 12/31/04

## Swan Bakery

All Occasion Cakes

Guy Gagliano

The Official Bakery of Gateway Playhouse

15 South Country Rd., East Patchogue, NY 11772  
(631) 475-9626

www.gudephotography.com

631-  
654-8093



## Morgan's Beach House Restaurant



Lunch & Dinner - Indoor/Outdoor  
363 Grove Ave. Patchogue 631-758-3524  
(closed Mondays)

## Who's Who



Irish Coffee  
 Pub  
 at  
**Bellport  
 Country Club**

always open to  
 the public.

The favorite for  
 pre- and post-show  
 dining.

Conveniently located between  
 Gateway Playhouse and  
 Patchogue Theater on  
 SOUTH COUNTRY ROAD, in  
 BELLPORT VILLAGE

Available for groups and  
 small parties.

FOR RESERVATIONS  
 CALL  
**286-4227**

Also visit  
 Irish Coffee  
 Pub

on CARLETON AVENUE  
 in EAST ISLIP  
 277-0007

to my incredibly supportive family and wonderful friends.

**MICHELLE MARMOLEJO** (*Swing Dancer*) Ms. Marmolejo joins us shortly after completing the National Tour of *Saturday Night Fever*. She is a graduate of the University of the Arts in Philadelphia, PA, where she received her BFA in Modern Dance Performance. Other recent credits include: The National and Japanese Tours of *Swing*, *West Side Story* (Anita), and *Latin Heat*. She thanks God, family, and friends for their undying love and support.

**DORRELL AYQUINN MARTIN** (*Swing Dancer*) A native Houstonian, Dorrell recently moved to New York City. He has trained professionally in New York and Los Angeles. He has toured with dance companies and singing artists. Dorrell just finished the National Tour of *A Few Good Men...Dancin'*.

**CATHERINE O'MALLEY** (*String Bass*) is making her professional debut! Catherine has studied at the Manhattan School of Music for two years. Favorite credits include the pit orchestras of *Carousel*, *Pirates of Penzance*, *How to Succeed...* She has toured in several jazz ensembles as a bass player and is a teacher of private lessons.

**TRUDI POSEY** (*Jo Sterling*) is happy to be playing Jo Sterling again. Previously she's done the role at the Cape Playhouse and at the Arts Center of Coastal Carolina. Her regional credits include Agnes in *I Do! I Do!*, Lizzie in *110 in the Shade*, Rennabelle in *Radio Gals*, and Jenny in *Company*. In N.Y.C. she's been seen in *Seven Ages* at The Hudson Guild and most recently at the Vital Theatre on

Theatre Row in *Shakespeare's Revenge* for the Manhattan Playwrights. On TV she's been on *Law and Order* and *Ed*. Thanks to Boby and family, and my drum mentor, Richard Zaluud.

**ROB REYNOLDS** (*Swing Dancer*) is happy to be here at Gateway Playhouse. Recent shows include *Kiss Me Kate*, *Crazy For You*, and *Guys and Dolls*. Rob has also toured Europe and the U.S. in such shows as *West Side Story*, *A Chorus Line*, and last fall acted as stand-in for Rich Little for the national tour of *The Presidents*. Love and thanks to his family for their support, and especially to Val.

**LEENYA RIDEOUT** (*Lilly*) Broadway: *Cabaret*, 1998 revival (original cast), Fred Astaire Award for Best Ensemble. Off-

Broadway: *Yiddle with a Fiddle* at American Jewish Theatre, *The Portable Pioneer and Prairie Show* at the Melting Pot Theatre, and *Cowgirls* at the Minetta Lane Theatre. Regional: Dorothy in *Summer of 42* at Mill Mountain Theater, *The Canterbury Tales* at the Guthrie Theater, Sarah Brown in *Guys and Dolls* at North Carolina Theatre, *Avenue X* at Cincinnati Playhouse in the Park & Merrimack Repertory Theatre, *Honky Tonk Highway* at Florida Studio Theatre, Maria in *The Sound of Music*, and Julie in *Carousel*. International Tour: Eliza Doolittle in *My Fair Lady*. Concert: *My Favorite Broadway* (PBS), *Bringing Broadway Back Home* (Fort Collins Symphony Orchestra). Film: *Mona Lisa Smile* (Columbia Pictures), *Loser* (Columbia Pictures). Leenya is also

**WE'RE SUFFOLK COUNTY'S  
 BEST KEPT TRUCK SECRET!**

**0% PRESSURE - 100% SATISFACTION GUARANTEED!**



2004 Envoy SLE      2004 Sierra      2004 Yukon      2004 Yukon XL Denali

"SERVING THE COMMUNITY SINCE 1952 AS YOUR GMC TRUCK HEADQUARTERS!"



**Cassel**

**GMC**  
 WE ARE  
 PROFESSIONAL GRADE™

**GMC TRUCK SALES**

550 North Ocean Avenue • Patchogue, NY  
 3 Miles South of LIE • 1 Block North of Sunrise Hwy.

**1-800-758-5811**

Find us at [www.GMbuypower.com](http://www.GMbuypower.com)

# The USO

The USO was born after the US' first peacetime draft was enacted in autumn 1940, in anticipation of entering World War II. Recognizing the unpopularity of sending Americans into the conflict and its effect on troop morale, President Franklin Delano Roosevelt challenged six civilian agencies - The YMCA, YWCA, The Salvation Army, National Catholic Commission Service, National Jewish Welfare Board and National Travelers' Aid Society - to address on-leave recreational needs. The six pooled their resources, and created a new civilian agency; the United Service Organizations - the USO. FDR was named its first honorary chairman. To this day, the USO remains a private, non-profit organization completely funded by donations from private citizens and corporations, and staffed mainly by volunteers, and every president since FDR has accepted the honorary chairman's role.

After war was declared in December 1941, the USO became a conduit for American civilians to participate in the war effort. USO Centers were established in more than 3,000 communities, providing a "home away from home" for the GI's, whose numbers swelled to 12 million by 1944. These Centers were a place where soldiers on leave could forget about the conflict for a while and dance with a pretty girl, see the latest movies, write letters home, seek religious counseling, or just sit and talk over the free donuts and coffee.

Between 1941 and 1947, the USO staged over 425,000 Camp Shows around the world for GI's, with more than 7,000 entertainers participating including Bob Hope (who performed and aired all but two of his radio shows

from military bases throughout the second world war), The Andrews Sisters, and Roy Rogers. The USO had caught on so well with the home front that Hollywood began churning out movies with USO settings like "Four Jills In A Jeep" and "Stage Door Canteen". By the end of the war, the USO could boast that more than 1.5 million volunteers had worked for them. Once the war ended, however, the need for the USO seemed to end with it.

When just a few years later America went to war again, in Korea, the USO resumed operations, opening 24 clubs around the world. Marilyn Monroe famously entertained the troops, as did Groucho Marx, Mickey Rooney, and, of course, Bob Hope. Even after the truce was signed, over a million service personnel remained deployed, and the USO continued to expand to meet their needs.

With the advent of the Vietnam conflict, the USO opened Centers in combat zones for the first time, with 17 in Vietnam and six in Thailand that saw more than a million soldiers a month. The USO Camp Shows were back in action too, with over 5,000 performances given during the Vietnam years. By this time, Bob Hope had become synonymous with the USO show, tirelessly touring military installations and bases around the world. The soldiers nicknamed him "G.I. Bob" and Congress honored him five times, culminating with the unanimous passage of a resolution making him the nation's first honorary veteran.

The need for the USO was questioned again in the early 1970's when the draft ended, and the United Way and the Department of Defense conducted a



review of its programs and services. The review concluded that the USO was needed just as much in peacetime as in war, to help Vietnam veterans readjust to civilian life.

The USO continued to provide support and entertainment to troops throughout the Persian Gulf War, Somalia, Kuwait, and now Iraq, with 121 Centers in ten countries (including four in New York State). Moving with the times, they have established Family and Community Centers to help servicemen's families with childcare, nutrition,

budgeting and recreation and to promote intercultural understanding when they are stationed abroad.

And of course, the Camp Shows go on with entertainers like Drew Carey, Jessica Simpson, and the Dallas Cowboys Cheerleaders giving soldiers a welcome break whether stateside or abroad. The USO continues to add new programs to support the military, vowing to adapt to the rapidly evolving world, "Until Every One Comes Home."

**THE BANK OF NEW YORK**  
LONG ISLAND REGION

**24-hour ATM**


32 Station Road, Bellport,  
New York 11713

**(631) 286-4200**

Member FDIC 1986 The Bank of New York

JOE 281-0376

**SHIRLEY SLEEP SHOPPE**  
618 Montauk Highway • Shirley, NY 11967



Complete Line of Conventional,  
Waterbeds & Futons

## Who's Who

a singer/songwriter. Her first album, *Phoenix*, is available at [www.leenya.com](http://www.leenya.com). And Ted, thank God for you...

**MIKKI RYAN** (*Reeds*) Mikki was in the original cast of *Swingtime Canteen*. She received her Masters degree in woodwind performance from the New England Conservatory of Music. This is Mikki's tenth season playing at Gateway Playhouse. She also did their Far East tours of *The Sound of Music*, *South Pacific*, and *A Chorus Line*. When not at Gateway, she substitutes in the orchestra of the Broadway productions of *The Lion King*, and *Phantom*, performs with her chamber ensemble *Metamorphic Winds*, writes and performs original music as the minstrel in *Bard and Minstrel Storytellers*, and performs with various orchestras and ensembles in the New York area. Currently, she lives across the street from Faye Ray in New Jersey with her husband, Jon. She's thankful to Gateway for the opportunity to work with Barry and Phyllis again.

**ALISON SOLOMON** (*Swing Dancer*) a native Long Islander, is thrilled to be performing so close to home at Gateway Playhouse. Alison was recently featured as the Lindy dancer on the National Tour

of *Swing!* Recent credits include *Swing!* (Westchester Broadway Theatre), Disney Cruise Line, Hudson Theatre Academy Awards, MTV's *Direct Effect*, Macy's Thanksgiving Day Parade, Long Island Ballet Theatre. Thanks to her family and friends for always believing.

**SARAH STILES** (*Katie*) is very excited to be working at Gateway this summer, so close to the beach! Some of her credits include: National Tour: Kate Mullins in *Titanic*. Regional: Dorothy in *The Wizard of Oz* (Northshore Music Theatre and Lyric Theatre of Oklahoma), Frenchy in *Grease* (Papermill Playhouse), Ester in *Meet Me in St. Louis* (Virginia Music Theatre) and, the world premiere of *Memphis* (Northshore Music Theatre). However, Sarah's most recent role has been her favorite—newlywed bride to her very own soldier Jon Paul!

**MARIA VASSALLO** (*Trumpet*) Graduate of the American Musical and Dramatic Academy. National tours of *Grease* starring Cindy Williams and Eddie Mekka from *Laverne and Shirley*, and *Cabaret* (Lulu/trumpet). She is also a singer with a jazz trio in the Long Island/New York City area. Maria is excited to be a part of Gateway's production of *Swingtime Canteen*. Love to

Dad, Mom, Tanya, Sunny, family and friends. Swing on!

**ALICE VIENNEAU** (*Marian*) returns to Gateway where she played Evita and Aldonza in *Man of La Mancha*. Alice was most recently seen at the New York State Theatre Institute as Thea in *Fiorello!* She spent last autumn playing Charlotte in *A Little Night Music* at TheatreWorks in Palo Alto, CA where she was nominated for a San Francisco area Critics Circle Award, then came home to New York City's Duke Theatre as Kate in the Off-Broadway production of *The Taming of the Shrew*. Her other New York credits include Broadway's *Les Miserables*, and the world premieres of *Leaving Queens* and *The Last Session*. She has toured nationally with Andrew Lloyd-Webber's *Aspects of Love* and was a soloist in his

concert tour.

Regional credits include Mother in *Ragtime* at both the Pioneer Theatre Company in Salt Lake City, and at TheatreWorks in CA, *Company* at Missouri Rep and *Eliot Ness* at both Denver Center and Cleveland Playhouse. She has played Reno Sweeney in *Anything Goes*, as well as Olivia in *Twelfth Night* and Beatrice in *Much Ado About Nothing*.

**PAUL ALLAN** (*Producer*) For more than 20 years, Paul has produced successful shows from the East End to the Far East. Born into the theatrical family that started Gateway, Paul became involved in the theatre at an early age. In addition to his career as a producer, Paul co-founded a successful touring company, which mounted dozens of productions across the US and as far away as Taiwan and

## Who's Who

### ROE AGENCY INC. Insurance Since 1898

Personal Insurance  
Commercial Insurance  
Property, Casualty  
Life  
Health  
Financial Services

◆ 125 East Main Street ◆  
◆ Patchogue, New York 11772 ◆  
Phone: 631.475.4000  
Fax: 631.475.7648



#### Fine Dining Since 1980

Dinners from 5-10:00 p.m.  
Sunday Brunch 12 - 3:00 p.m.  
Sunday Dinner 5 - 9:00 p.m.  
Closed Mondays

Four Blocks From The Gateway  
Playhouse and Ten Minutes From  
The Beautifully Renovated  
Patchogue Theater

Piano Bar Fri. & Sat. 8:30 - 12:30  
Wednesdays - Lobster Bake  
Patio Dining

108 So. Country Road, Bellport  
286-2650

10% Entrée Discount  
with Theatre Tickets

### Donato's RESTAURANT



"A Taste of Italy in  
the Heart of Patchogue"

114 W. MAIN ST., PATCHOGUE

OPEN FOR DINNER AT 4:30  
WEDNESDAY - SUNDAY

1+1/2 BLOCKS WEST OF NO. OCEAN AVE.

(631) 447-7766

### MIHstudio

Fine Art



10 Bell Street, Bellport, New York 11713  
Phone 631 286 4020

www.ihmels-herget.com

# Evolution Of A Show

A Broadway musical is one of the few art forms where the final version is never really final. There were four editions of *The Scarlet Pimpernel* between its 1997 opening and 2001 national tour, and the new Frank Wildhorn musical, *Dracula*, has undergone many changes since it was first mounted in a workshop three years ago. *Jane Eyre's* writers tinkered with the show for nine years before its Broadway opening. Even a classic, like *Annie Get Your Gun*, can undergo revisions in revival.

*Swingtime Canteen* is no exception. In the early 1990's, Linda Thorsen Bond conceived a show called *Home Fires*, which was produced in Bond's home state of Texas, and again at Long Island's Bay Street Theatre. In both productions, elements were added and dropped, scenes were cut or rewritten, and characters evolved. Bond then approached producers in New York and Bill Repicci took on the project. Repicci doctored the show some more prior to its off-off Broadway showcase at Playhouse 91, and Gateway's *Swingtime Canteen* director/choreographer, Barry McNabb, was hired to choreograph. "About the second week into rehearsals, they fired the director, and I took over as director and

choreographer," said McNabb, whose first job as a young dancer in New York was working for Bob Fosse in the national tour of *Dancin'*.

Angels (Broadway financial backers) who wanted to back the show for an extended off-Broadway run felt the book needed to be bumped up with more humor. Repicci brought in Charles Busch (*Taboo*, *The Tale Of The Allergist's Wife*) to recreate the show. "The character of Marian Ames, the fading movie star, did not exist in the first version," said McNabb, "It was always a USO show, though. In the original *Home Fires* the ladies were going to audition for the USO people to get sent overseas. In the version Charles Busch has done, it is based on an actual event Coca-Cola sponsored on Armed Forces Radio Network." Busch brought in his own director, and McNabb stepped back to become choreographer again.

In winter of 1996, the show, now called *Swingtime Canteen*, opened off-Broadway. *The New York Times* called it "an exuberant excursion back to the days of World War II" and the *New York Post's* Cindy Adams raved, "A must see! A must enjoy!"

"Charles kept the heart," said McNabb, "It always had an appeal for anybody who had been through that period, they really had a great time with it. And it thrills people to watch these women do so many things - playing instruments and singing harmonies, the

choreography, as well as portraying their characters." *Swingtime Canteen* ran for over a year, and then enjoyed another run in London. The appeal of the show, set during America's last age of innocence, has only continued to grow - as of 2004, it has been mounted over 1,000 times.



## THE BELLPORT

Steps away from the Gateway Playhouse

★★★★

New York Times Review

159 South Country Road, Bellport, New York 11713  
(631) 286-7550

Frank R. Egan, DDS, PC  
Certified, American Board of Orthodontics



Hospital Road  
Professional Center  
250 Patchogue-Yaphank  
Road - Suite 14  
East Patchogue, NY 11772  
(631) 289-3990

[www.TeethOnTheMove.com](http://www.TeethOnTheMove.com)

## Who's Who

Singapore.

Serving as technical director, sound engineer and master electrician for numerous productions when he first began working in the industry provided Paul with invaluable knowledge and hands-on experience. His expertise allowed him to act as consultant and advisor on the restoration and renovation of Patchogue Theatre, which under Gateway's management, reopened in 1998 with *Nutcracker On Ice*. Gateway still stages shows there several times each year, with *Cats* and *Fosse* being this season's productions.

**BARRY McNABB** (*Director*) is pleased to make his debut here at the Gateway Playhouse. Credits: Off-Broadway: Irish Repertory (12 productions, including the

current hit *Finian's Rainbow*), York Theatre, Playhouse 91, CSC, AMAS, Circle Rep and others. Regional: Westport Playhouse, Pittsburgh Public, Bay Street, GEVA, Asolo, Michigan Ensemble, Westchester Broadway, Seattle 5th Avenue, Houston TUTS, The Alley, Tropicana Casino, and many others. Broadway: Annual Easter Bonnet Competitions (also author/producer, raising over \$500,000 for Broadway Cares). International: Multi award-winning productions of *Chicago*, *West Side Story*, *When Harry Met Sally* in Madrid, *Barcelona* and throughout Spain, *Grease* in Southeast Asia and others. Independent film work includes: *The Next Step* and *Whiskey River*. Television: *Saturday Night Live*, *Late Nite with Conan O'Brien*, and *Howard Stern Show*. Barry is

a graduate of University of Oregon and currently the chairman of the Callaway Award Committee, an annual peer award for direction and choreography in New York City through the Stage Directors and Choreographers Foundation.

**WILLIAM B. HUBERT II** (*Choreographer*) returns to Gateway after having performed here in *Swing!* Directing and choreographing credits include: *Joseph...*, *The Music Man*, *Phantom*, *Jesus Christ Superstar*, *Godspell*, *Beauty and the Beast*, *Into the Woods*, *Snow White and the Seven Dwarfs*, and *Bunicula*. He is originally from Buffalo, NY where he began performing at the age of nine. Performance credits include: *Swing!*, *1776*, *Oh, Coward!*, *Cinderella*, *Kiss Me Kate*, *Footloose*,

### STAGEDOR *Dance* SCHOOL OF

#### Dance Camp

Session I July 5 - July 22  
Session II July 26 - August 12

#### Fall Registration Begins

Week of August 9

25 PATCHOGUE-YAPHANK ROAD • EAST PATCHOGUE

**654-8858**

James & Diane Giattino

### PAPA NICKS PIZZA



Gyros, Salads, Heros, Dinners  
Daily Lunch Specials

286-6400

117C-South Country Road, Bellport Village, NY

### Candy Cravings

Tim & Laurie Murphy  
Proprietors

Confections for all  
occasions!

- Gourmet & Sugar Free Chocolates
- Home Made Ice Cream and Italian Ices
- Gift Baskets & Trays • Wedding & Party Favors
- Unique Gifts • Corporate Gifts

**631-286-6100**

128 South Country Road, Bellport, New York 11713



**EDWARDS**

FULLY INVESTED IN OUR CLIENTS™

Serving investors Since 1887

Stocks • Bonds • Mutual Funds • CDs • IRAs  
Options • Insurance • Annuities • Financial Planning

Richard B. Miller • Vice President - Investments  
Antoinette R. Giordano, MBA • Senior Registered Financial Associate  
Trusted Advice - Exceptional Service  
222 East Main Street, Smithtown, NY 11787  
631-265-1400 x 252 • 800-348-3420 x 252  
richard.miller@agedwards.com

A.G. Edwards & Sons, Inc. Member SIPC Member New York Stock Exchange, Inc.

### COSTUME WORLD



Founded in 1975 by Marilyn Wick, Costume World's 35,000 sq. ft. flagship store is located in Deerfield Beach, Florida and serves as their main facility for theatrical productions. In addition, they maintain over 20,000 sq. ft. between their Dallas and Pittsburgh branches.

Costume World has over 500 shows, including original Broadway wardrobes, ready to be customized for your productions, whether you decide to rent or to own.

For over 27 years, they have been designing musicals and operas and answering the needs of their prestigious clientele.

Complete theatrical packages include rental rates, measurement forms, costume plot, costume rental agreements, as well as any photography requests.

Conveniently, Costume World's costume and opera plot service is available at [www.costumeworld.com](http://www.costumeworld.com) or call toll-free at 1-800-423-7496.

## South Country Inn

### Fine Italian and Continental Cuisine

Moderately Priced Dinners  
Starting at \$12.95

Early Bird Specials Available  
Daily 3:30 - 6 PM

**LUNCH SPECIALS**  
Starting at \$9.95

Served from 12-3 p.m.

Complimentary glass of wine with your lunch or dinner when you present show tickets.

A short drive from both theatres on South Country Road. Special attention to our theatre goers.

Parties & theatre groups welcome.

Stop for dessert or a cocktail after the show.

Open Tuesday - Thursday,  
Noon - 11 PM

Friday - Sunday,  
Noon - Midnight

Reservations recommended

668 South Country Rd.  
East Patchogue

**758-1919**

# Bellport CHOWDER HOUSE



*An Eating and Drinking Tradition*

**FULL MENU**

**FULL BAR**

Open Daily For Lunch and Dinner  
Seven Days A Week

Sunday - Thursday till 11:00 p.m. Friday & Saturday till Midnight

**SPECIALIZING IN FRESH LOCAL SEAFOOD  
AT AFFORDABLE PRICES**

*Before and After the Show You'll Want to Meet and Eat At  
THE CHOWDER HOUSE*

**TAKEOUT**

**CATERING**

19 Bellport Lane • Bellport Village • 286-2343

*Titanic*, and *Anything Goes*. Thanks to Gateway, Barry McNabb, the talented cast of *Swingtime Canteen*, and his fiancé Nicole.

**ROBIN JOY ALLAN** (*Casting and Artistic Director*) is grateful to have lived and breathed the arts all her life, beginning with performance as child actress here at Gateway as well as on the road, to traveling with a rock band as vocalist and keyboardist. Her background running the family business, included running the summer teen workshops, musical directing, writing, directing, choreographing and eventually, producing. After moving to NYC, she began a career in casting that took her to the West Coast. She was the Associate Casting Director on the feature films; *Parenthood*, *When Harry Met Sally*, *Lord of the Flies*, *Side Out* and *Ghost*. She also cast several television series, pilots and MOW's. Along with her Artistic and Casting Director duties here, she is also the force behind Gateway's Acting School Division. Her appreciation is for her family, her devotion is for her second family of students, her joy is in her daughter, Hayley Lynn, named after Harry and Libby, her maternal grandparents, who are her constant source of inspiration and a true example of eternal love.

**MARCIA MADEIRA** (*Lighting Designer*) is pleased to design her 13<sup>th</sup> production for Gateway Playhouse. Her favorites are: *On The Town*, *Swing*, *Jesus Christ Superstar*, *Forbidden Broadway*, *West Side Story*, *The Will Rogers Follies*, and *The Wizard of Oz*. She received a Tony nomination and won the Drama Desk Award for *Nine* directed by Tommy Tune with Raul Julia. Other Broadway designs include *My One and Only* with Tommy

Tune and *Twiggys*; *Marilyn*, *An American Fable* with Allison Reed and Scott Bakula; and *The Music Man* with Dick van Dyke. Off-Broadway designs include: *Side by Side by Sondheim* at the Dicapo Opera Theatre; *Cloud 9* directed by Tommy Tune; *Privates On Parade* with Jim Dale and Simon Jones directed by Larry Carpenter, choreography by Daniel Pelzig; and *The Transposed Heads* at Lincoln Center, written and directed by Julie Taymor. Ms. Madeira has designed *La Boheme* for The Oklahoma City Philharmonic; *Don Carlos* for The Seattle Opera Association; *La Cenerentola* with Frederika von Stade for the Los Angeles Music Center Opera Company, and six tours for The National Lyric Opera Company. She has designed numerous regional theatre productions for The Huntington Theatre, Boston; The Walnut Theatre, Philadelphia; Studio Arena Theatre, Buffalo; and The Alliance, Atlanta. Photos of Ms. Madeira's work may be seen at <http://www.geocities.com/mmadeira2000>.

**ALLEN WILSON** (*Costume Designer*) graduated with a Degree in Theater from the University of St. Louis. Among his many theatrical accomplishments he has directed, produced and designed over 200 stage productions. Formally the resident costume designer for The Mark Two Dinner Theater, Allen moved to COSTUME WORLD in 2001, one of the country's largest costume rental houses based in south Florida. He has since designed many new shows for professional theatres such as the Orlando Broadway Theatre, Light Opera Works and Art Park, and the tours of *State Fair*, *Singin' in the Rain* and *Titanic* for Candlewood Productions. Allen is very

## Who's Who

pleased to once again be working with the Gateway Playhouse where last summer, his designs were seen in *On the Town*.

**ERIN KRAUS** (*Production Stage Manager*) is thrilled to be back at the Gateway Playhouse for her fifth season. She recently returned from the National Tour of *The Unsinkable Molly Brown*. Some of her favorite credits include *The Will Rogers Follies*, *West Side Story*, and *Forbidden Broadway*. Erin would like to thank everyone at the Gateway Playhouse, especially Paul and Stanley, for all their support. She would also like to thank Mom, Dad, and Brigid for their love and inspiration. Erin would like to dedicate these performances to her Aunt Helen.

**MICHAEL BOYER** (*Set Designer*) He has designed over 250 sets which have been seen from Stockholm to Diamond Head and from Key West to Hong Kong. Last year he designed *Fiddler On The Roof*, *Forbidden Broadway*, and *Swing*. This season he designed *On The Town*. He is a member of Actors' Equity Association and United Scenic Artists, Local 829. For the past fifteen years whenever Mike has not been at Gateway, he has worked as set designer/technical director for the Tennessee Williams Theatre in Key West, Florida. A special thanks to the crew for all their hard work.

## Chachama Grill

*Upscale American Cuisine*

655-8 Montauk Hwy.  
East Patchogue, NY 11772

**631-758-7640**

Pre-Fix available 5-6 pm  
Monday - Sunday

**ANY APPETIZER  
ANY ENTREE  
ANY DESSERT**

**from our regular menu!**

Lunch: Monday - Friday 11:30 am - 2:30 pm  
Dinner: Monday - Sunday Starts at 5:00 pm

Reservations Recommended

Chef/Owner - Elmer Rubio  
formerly of Mill River Inn, Tupelo Honey & Meritage

## HTM LANDSCAPING COMPANY

is the official landscaper of  
*Gateway Playhouse*

all work done by owner  
Nicholas J. Harding

**631-475-0636**

## LYONS FUEL OIL CO. INC.

est. 1934

24 Hr. Automatic  
Service Delivery

23 Station Road • Bellport, New York 11713  
Phone (631) 286-0395 • Fax (631) 286-0396

## The BARN MUSEUM

Home of Long Island History

Special Exhibits

Second Largest Collection  
of Painted Tinware  
in the United States

THURSDAYS, FRIDAYS & SATURDAYS, 1 TO 4:30PM.



*Bellport-Brookhaven  
Historical Society*

ALL LOCATED AT: 31 BELLPORT LANE, BELLPORT - 286-0888

## THE POST-CROWELL HOUSE 1833

A Fine Collection of  
Period Furnishings

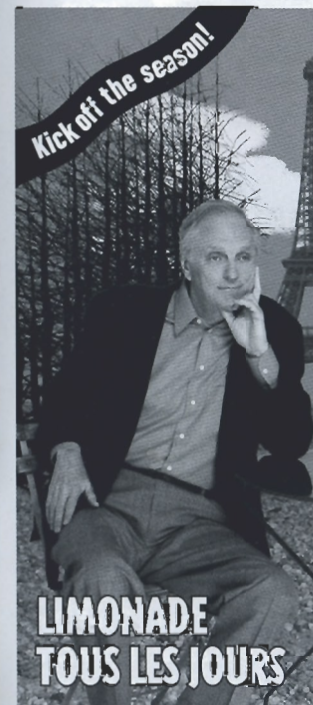


## EXCHANGE SHOP

Antiques & Decorative Accessories

Thurs., Fri., & Sat., 11A.M. - 5PM.

Consignments received Wednesdays,  
10 A.M. to 12 Noon  
(We encourage the donation of fine antiques  
which are fully tax deductible)



**LIMONADE  
TOUS LES JOURS**

## TARGET MAINSTAGE SEASON

### LIMONADE TOUS LES JOURS

By Charles L. Mee  
Directed by Zoe Caldwell  
With Alan Alda, Eric Bondoc  
Nicole Leach

**May 25 - June 6**

An effervescent and whimsical  
new romantic comedy about  
the bittersweet pleasure of  
living in the moment.

### BAY STREET THEATRE

Long Wharf, Sag Harbor  
Box Office: Tues.-Sun., 11-6pm

**631-725-9500**

### ROUGH CROSSING

By Tom Stoppard  
Directed by Daniel Gerroll  
With Dylan Baker, Christine Ebersole,  
Edward Hibbert, Richard Kind,  
Tony Roberts  
**June 15 - July 4**

### AUNTIE MAME

By Jerome Lawrence & Robert E. Lee  
Based on the novel by Patrick Dennis  
Directed by Richard Sabellico  
With Charles Busch  
**July 13 - August 1**

### ONCE ON THIS ISLAND

Book & Lyrics by Lynn Ahrens  
Music by Stephen Flaherty  
Directed by Marcia Milgram Dodge  
**August 10 - September 5**

[www.baystreet.org](http://www.baystreet.org)



On the Patchogue River Overlooking  
the Great South Bay

Join Us for  
a Lunchtime  
Cruise!



Dance The  
Evening  
Away!

Aboard the River Queen Mary

EVERY SUNDAY  
Departing at 11:30 a.m.  
Unlimited Beverages,  
Finger Foods & More!

EVERY WED.  
Departing at 6:00 p.m.  
Unlimited Beverages,  
Finger Foods & More!

\$38.95  
per person  
+Tax & Gratuity

\$47.95  
per person  
+Tax & Gratuity

Make Your  
Reservations Now!  
Seating is limited.  
40 passengers, max.  
Cruise 11:30 a.m.-2:30 p.m.

Make Your  
Reservations Today!  
Seating is limited.  
40 passengers, max.  
Cruise 6 p.m.-9:30 p.m.

The River Queen Mary  
is also available  
for Charter at all other times.

The Outdoor Gazebo  
Is Open Everyday!

LIVE MUSIC EVERY  
FRIDAY & SATURDAY

Sunset  
Happy Hour  
Mon. - Fri.  
4:30-6:00 p.m.

OPEN 7 DAYS A WEEK  
YEAR ROUND

82 BRIGHTWOOD ST.  
PATCHOGUE

654-2233



offering a full spectrum of  
printing and creative services



QUALITY PRINTING &  
GRAPHIC DESIGN

56 Old Dock Road  
Yaphank, NY 11980  
Tel 631.345.2202  
Fax 631.345.0975

e-mail: mailbox@searlesgraphics.com  
www.searlesgraphics.com

## MUSICAL NUMBERS

(In Alphabetical Order)

- AC-CENT-TCHU-ATE THE POSITIVE .....By Harold Arlen & Johnny Mercer © 1944 Harwin Music Co.  
 BEAT ME DADDY, EIGHT TO THE BAR .....By Don Ray, Hughie Prince & Eleanor Sheehy  
 © 1940 MCA Music Publishing  
 BEER BARREL POLKA .....By Lew Brown, Wladimir A. Timm, Jaromir Vejvada & Vasek Zeman  
 © 1939 Shapiro, Bernstein & Co.  
 BEI MIR BIST DU SCHÖN .....By Jacob Jacobs, Shalom Secunda. English Lyrics: Sammy Cahn, Saul Chaplan  
 © 1937 Warner Bros., Inc.  
 BEYOND THE BLUE HORIZON ....By Leo Robin, Richard A. Whiting & Franke Harling © 1930 Famous Music, Inc.  
 BOOGIE WOOGIE BUGLE BOY .....By Don Raye & Hughie Prince © 1941 MCA Music Publishing  
 BUGLE CALL RAG .....By Jack Perris, Billy Meyers & Elmer Schoebel. Add'l Lyrics by Bob McDowell.  
 © 1923 EMI Mills, Inc. & Edwin H. Morris & Co.  
 DADDY .....By Bobby Troup. Verse and Add'l Lyrics by Bob McDowell  
 © 1941 Music Sales Corp.  
 DON'T FENCE ME IN .....By Cole Porter © 1944 Warner Bros., Inc.  
 DON'T SIT UNDER THE APPLE TREE .....By Lew Brown, Charlie Tobias, Sam H. Stept  
 © 1942 EMI Robbins/Ched Music  
 HIS ROCKING HORSE RAN AWAY .....By Johnny Burke and Jimmy Van Heusen © 1944 Paramount Music Corp.  
 HOLD TIGHT, HOLD TIGHT.....By Leonard Kent, Edward Robinson, Leonard Ware, Jerry Brandow, Willie Spostwood  
 © 1939 EMI Mills, Inc.  
 HOLLYWOOD CANTEEN .....By Ted Koehler, M.K. Jerome, Ray Heindorf © 1944 WB Music Corp.  
 HOW HIGH THE MOON .....By Morgan Lewis & Nancy Hamilton © 1940 Chappell & Co., Inc.  
 I DON'T WANT TO WALK WITHOUT YOU .....By Frank Loesser & Jule Styne  
 © 1941 Paramount Music Corp.  
 I'LL BE SEEING YOU .....By Sammy Fain & Irving Kahal  
 © 1930 Fain Music Co./New Irving Kahal Music  
 I'LL BE WITH YOU IN APPLE BLOSSOM TIME .....By Albert Von Tilzer & Neville Fleeson  
 © 1920 Broadway Music Corp./Jerry Vogel Co.  
 IN THE MOOD .....By Joe Garland © 1939 Shapiro, Bernstein & Co., Inc.  
 KEEP THE HOME FIRES BURNING .....By Ivor Novello & Lena Ford  
 LOVE ISN'T BORN, IT'S MADE .....By Frank Loesser, Arthur Schwartz © 1943 Warner Bros., Inc.  
 MY SHINING HOUR .....By Harold Arlen & Johnny Mercer © 1943 Harwin Music Corp.  
 A NIGHTINGALE SANG IN BERKELEY SQUARE .....By Eric Maschwitz and Manning Sherwin  
 © 1940 Shapiro, Bernstein & Co.  
 PACK UP YOUR TROUBLES IN YOUR OLD KIT BAG .....By Felix Powell & George Powell  
 © 1942 Shapiro, Bernstein & Co., Inc.  
 PRAISE THE LORD AND PASS THE AMMUNITION .....By Frank Loesser © 1942 Famous Music Corp.  
 RHUMBOOGIE .....By Don Raye & Hughie Prince © 1940 MCA Music Publishing  
 RUM AND COCA-COLA .....By Jeri Sullivan, Paul Baron, Morey Amsterdam © 1944 EMI Feist Catalogue  
 SENTIMENTAL JOURNEY .....By Bud Green, Les Brown, & Ben Homer © 1944 Morley Music Co., Inc.  
 SING, SING, SING .....By Louis Prima © 1936 EMI Robbins  
 THANK YOUR LUCKY STARS & STRIPES .....By Johnny Burke & James Van Heusen © 1941 Peer International  
 THREE LITTLE FISHES .....By Saxie Dowell  
 © 1939 Chappell & Co.  
 TICO TICO .....By Ervin Drake & Zequinea Abreu  
 © 1943 Peer International  
 YOU'LL NEVER KNOW .....By Harry Warren & Mack Gordon © 1943 Warner Bros. Music Corp.  
 YOU'RE OFF TO SEE THE WORLD .....By Gene Depaul & Don Raye © 1941 MCA Music Publishing

(All Songs Used By Permission, All Rights Reserved and Renewed)



69 East Main Street • Patchogue, NY 11772

PHONE 475-4774

FAX 207-0267

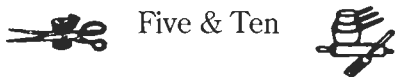
**TRIO**  
FINE FOOD & DRINK

KEVIN STAHL - CHEF/OWNER

PLEASE CALL FOR RESERVATIONS

**THE VARIETY MART**

An Old Fashion  
Five & Ten

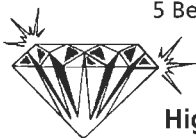


138 Main Street  
Bellport, New York 11713

631-286-2210

**BELLPORT JEWELERS**

5 Bellport Lane, Bellport  
286-7700



**We Buy & Sell  
Highest Prices Paid!**

Jewelry, Coins, Stamps, Gifts  
Repairs on all jewelry & watches on premises  
Authorized Citizen & Movado dealer  
[www.bellportgalleries.com](http://www.bellportgalleries.com)

**ACTING AND  
MUSICAL  
THEATRE  
TRAINING**

all levels of acting for all ages thru adult



**GATEWAY  
ACTING SCHOOL**

*Now Enrolling*

LEARN FROM THE PROFESSIONALS!

**286-9014**



Catch all the Acts in **2004**

**CATS**  
July 7 - July 24

At the Patchogue Theatre

**GYPSY**  
July 28 - August 14

September 8 - September 25

**FOSSE**  
August 18 - September 4

At the Patchogue  
Theatre

**CABARET**



**American Airlines**

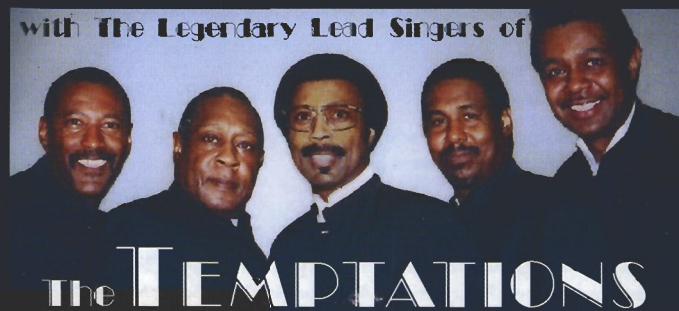
Official Airline for the Gateway Playhouse

Call or Log on for more information  
631-286-1133 • 1-888-4TIXNOW

[www.gatewayplayhouse.com](http://www.gatewayplayhouse.com)

Don't be "...Too Proud To Beg" for Tickets!  
**RETURN TO MOTOWN'S HEYDAY!**

with The Legendary Lead Singers of



**the TEMPTATIONS**

July 17 at 4 PM and 8 PM

Tickets: \$35.00 and \$29.00 - In Bellport

**Just  
Announced!**

"My Girl",  
"Just My Imagination",  
"Get Ready",  
"Can't Get Next To You",  
"The Way You Do The  
Things You Do",  
"Papa was a Rollin' Stone"



STAFF

Executive Producers ..... Ruth and Stan Allan  
 Producer ..... Paul Allan  
 Associate Producer ..... Jeff Bellante  
 General Manager ..... Gale Edwards  
 Casting / Artistic Director ..... Robin Joy Allan  
 Company / Production Manager ..... Stanley Schorr  
 Director ..... Barry McNabb  
 Musical Director ..... Phyllis Gessler  
 Choreographer ..... William B. Hubert II  
 Stage Manager ..... Erin Kraus  
 Set Designer / Technical Director ..... Michael Boyer  
 Lighting Designer ..... Marcia Madeira  
 Costume Designer ..... Allen Wilson  
 Master Electrician ..... Brian Loesch  
 Sound Engineer ..... Colle Bustin  
 Costume Coordinator ..... Marianne Dominy  
 Prop Master ..... Cliff Andrea  
 Scenic Charge ..... Brittany Fahner  
 Asst. Company Manager ..... Michael Critchlow  
 Asst. Stage Manager ..... David Ruttura  
 Asst. Technical Director ..... A.D. Garrett  
 Asst. Master Electrician ..... Mike Gugliotti  
 Master Carpenter ..... Joe Sturek  
 Wardrobe Assistants ..... Jody Denney & Kelly O'Brien  
 Wig Stylist ..... Jody Denney  
 Carpenters ..... Elan Bustin, Katya Khellblau, & Tim O'Reilly  
 Interns ..... Jordan Alexander, Jose Santiago, Rachel Reynolds, Morgan Jacobellis, Alexis Karpf, Keith Redmond, Samantha Ratmer, Mellissa Boyle  
 Director of Group Sales ..... Annmarie Allan  
 Publicist ..... Linda Unger  
 Administrative Assistant ..... Enrico Spada  
 Casting Associate ..... Jessica O'Sickey  
 Box Office/ House Manager ..... Laurie Parr  
 Box Office Staff ..... Erika Bennet, Melissa Boyle, Joanne Famiglietti, Jodi Grega, Nadine Hazard, Amy Mark, Greg Monteith, Jennifer Neumann, Pam Stewart, Michael Rumaker, Amy Prokop, Laura Werner  
 Front of House Manager ..... Bob Nofi  
 House Staff ..... Michael Gandolfo, Martin Laverty, Kerry Layden, Jose Moreno, Michael Moreno, John Philpot, Marie Rachek, Philip Sheridan, Rita Wehner  
 Maintenance ..... Don Harrison  
 Cleaning Contractor ..... Fiori Enterprises Inc.  
 Music Contractor ..... Jeff Hoffman  
 General Counsel ..... Ann L. Nowak & Associates  
 Production Photographer ..... Patrice Casanova  
 Sound Consultant ..... Dominic Sack  
 Trucking Supervisor / Rentals Tech. Director ..... John Schroeder  
 Grounds Maintenance ..... HTM Landscaping Company

Gateway Playhouse would like to thank our volunteer staff for their dedication and support. It is much appreciated.

Marie Rachek - Head Usher

Ushers - Al Aberg, Missy Atchue, Carmela Aiosa, Maria Barba, Olga Belz, June Budd, Anne Burke, Betty Entress, Alice Friedman, Paul Friedman, Irene Fritz, Marian Harrison, Mary Lanier, Marge Littlefield, Carol Martino, Joan McGroarty, Jane Meyers, Sue Nemet, Peter Pernice, Alice Rucker, Terry Seng, Michael Senic, Pat Siegel, Bella Triola, Carol Weinstein & Patricia Yurdiga

IF YOU WOULD LIKE TO JOIN OUR VOLUNTEER STAFF CALL 286-0555

# Children's Theatre

Live Musical Shows! All Seats \$8.50

The Little Mermaid  
Taubenslag Productions



Patchogue Theatre  
Saturday, July 10 -  
10:30AM & 1PM

Beatrix Potter's -  
Jemima Puddleduck  
and The Bad Rabbit

TheaterworksUSA  
Lifesize Puppets



Patchogue Theatre  
Friday, July 16 -  
10:30AM & 1PM

TheatreworksUSA  
JIM WEST'S

## DINOSAURS!



Patchogue Theatre  
Friday, July 23 -  
10:30AM & 1PM

Peter Pan  
Gateway Playhouse



at Bellport  
Friday, August 6 - 10:30AM  
Saturday, August 7 - 10:30AM & 1PM  
Friday, August 13 - 10:30AM & 1PM  
Saturday, August 14 - 10:30AM

Alice in Wonderland  
Yates Musical Theatre



Patchogue Theatre  
Friday, August 20 -  
10:30AM & 1PM

## STUART LITTLE

Rochester Children's Theatre



Patchogue Theatre  
Friday, August 27 -  
10:30AM & 1PM

WE NOW HAVE RESERVED SEATING FOR THE CHILDREN'S THEATRE!

631-286-1133 • 1-888-4TIXNOW • www.gatewayplayhouse.com



Sorry, Children ages 2 and older only  
No Infants Please.



Shows subject to change without notice.

ON SALE  
NOW!