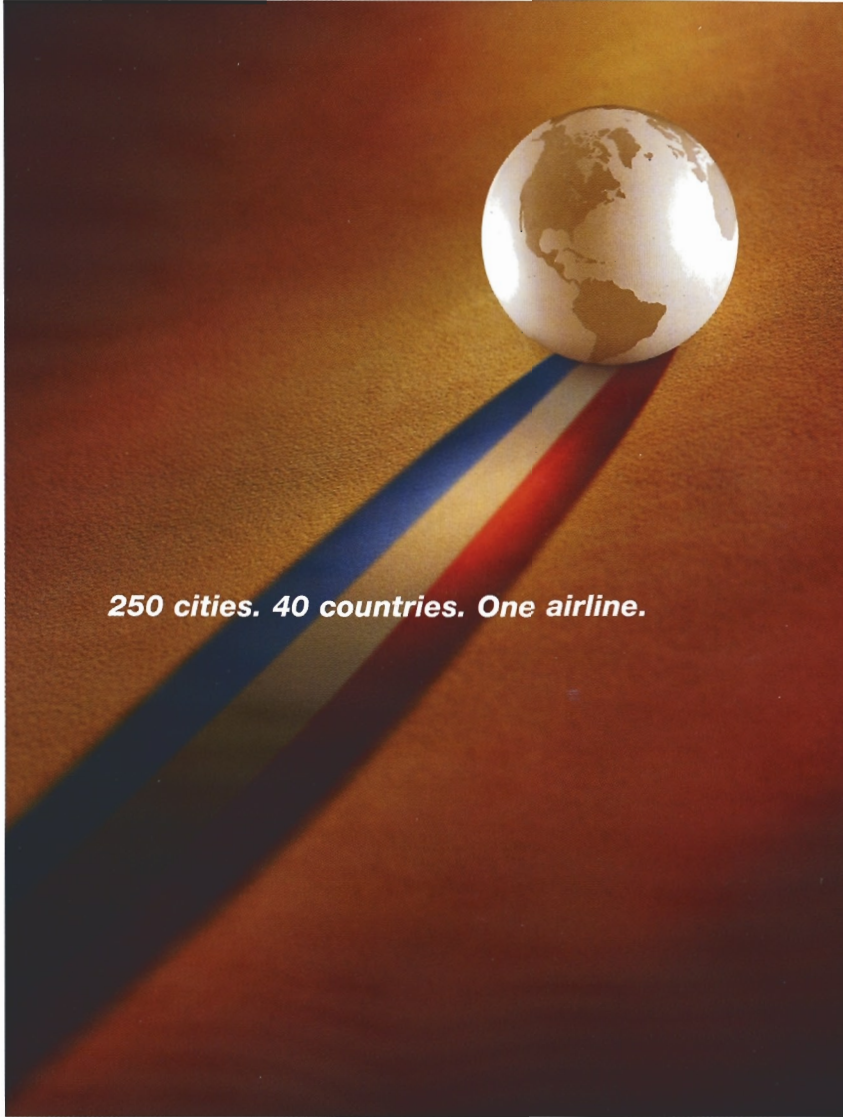


American Airlines, American Eagle, AA.com and We know why you fly are marks of American Airlines, Inc. American Eagle is American's regional airline affiliate.



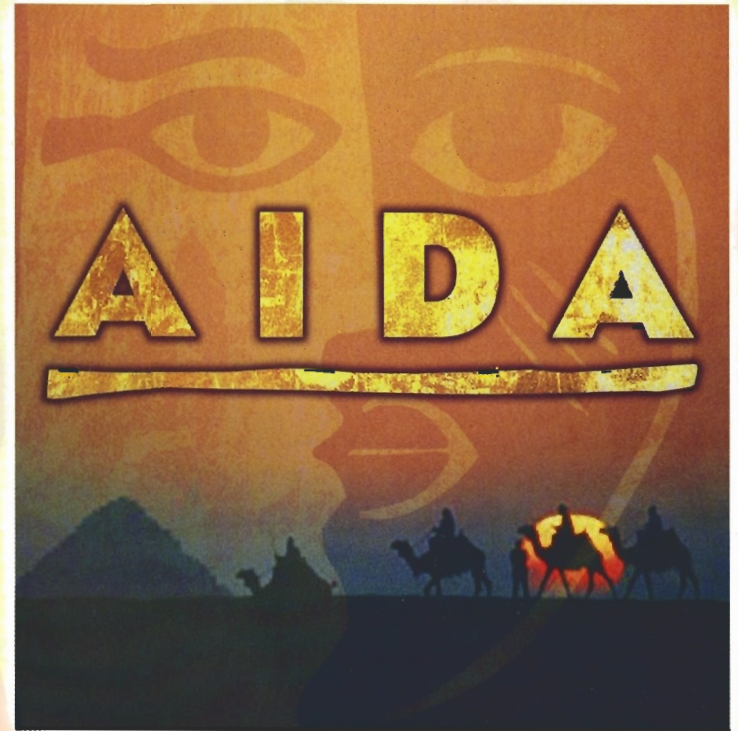
250 cities. 40 countries. One airline.

We know you want an airline without limitations. One that can take you across the state or around the world. American Airlines, together with American Eagle, serves hundreds of cities throughout the U.S., Canada, Latin America, Europe, the Caribbean and Japan. Wherever you're headed, book your next trip online at AA.com or call us at 1-800-433-7300.

We know why you fly. **American Airlines**[®] 
AA.com

S U M M E R 2 0 0 5

PLAYBILL



JULY 6 - JULY 23

Gateway
PLAYHOUSE

PATIENT-CENTERED SERVICES @
BROOKHAVEN MEMORIAL HOSPITAL MEDICAL CENTER



Our Patient-Centered Services include:

- Behavioral Health
 - Access Center
 - Emergency treatment and referral
 - Focus... medical treatment of acute withdrawal symptoms
 - Inpatient Care
 - Outpatient Mental Health and Alcohol Treatment
 - Psychiatric Home Care
- Cardiac Rehabilitation
- Community Health Centers
- Community Wellness Programs
- Coumadin Management
- Hemodialysis Center
- Home Health Care
- Hospice
- Maternal/Child Services
- Neuroscience Center
- Outpatient Laboratory Services
- Pain Management
- Radiological Imaging Services
- Sleep Disorder Center
- Surgical Solutions for Weight Loss
- Women's Imaging



Physician/Dental Referral Service (800) 694-2440

BROOKHAVEN MEMORIAL HOSPITAL MEDICAL CENTER • 631-654-7100
101 HOSPITAL ROAD • PATCHOGUE, NEW YORK 11772 • www.BrookhavenHospital.org

Wm. J. O'Neill

Sales Exchange Co., Inc.
Jewelers and Collateral Loanbrokers

Classic and Contemporary

Platinum and Gold



Jewelry designs that will excite your senses.



One East Main St., Patchogue 631.289.9899 www.wmjoneills.com

Mention this ad for 10% discount on purchase

Specialists in
Quality & Service

Family Owned &
Operated Since 1976



CARPET EXPRESS

1135 Montauk Hwy., Mastie • 399-1890/653-RUGS

721 Rte. 25A (next to Personal Fitness), Rocky Point • 631-744-1810

Open 7 Days



We love it when you love what you're walking on.

AREA RUGS TO GO

Find us on the web at
arearugstogo.com

100% Price Match Guarantee
Free Shipping



Est. 1910

The Pine Grove Inn has served generations of guests since its establishment in 1910. Our seasonal menus emphasize prime beef, fresh local seafood and Long Island produce as well as the traditional German fare (which made us famous).

The Palm Bar in the Pavilion Room overlooking the Swan River is a popular meeting place for lunch, dinner, or simply a relaxing cocktail and features *live entertainment Wednesday, Thursday and Friday evenings, featuring ED TRAVERS EVERY WEDNESDAY.*

Saturday evenings, the entertainment comes indoors with *Jacques LeBas performing in the main lounge.* We invite you to explore our website, www.pinegroveinn.com, for a look at our menu and today's special offerings.

\$5 Martinis

Tuesday through Friday
from 4-7 at the bar

Open for Lunch and Dinner Tuesday through Sunday

Choose us for your next special event – our catering department will be pleased to work with you to design your affair



Wednesday
Lobsterfest - \$25

Thursday
Prime Rib Night
Queen cut \$20
King cut \$23



Chapel Avenue & First St., Patchogue, NY 11772 • 631.475.9843

PRESENT THIS VOUCHER FOR
\$5 OFF LUNCH
on checks of \$25 or more

Expires July 31, 2005. Reservations suggested.
May not be combined with any other promotional offer.

PRESENT THIS VOUCHER FOR
\$10 OFF DINNER
on checks of \$50 or more

Expires July 31, 2005. Reservations suggested.
May not be combined with any other promotional offer.

TRIO

FINE FOOD & DRINK

69 EAST MAIN STREET • PATCHOGUE, NY 11772



NEXT TO PATCHOGUE THEATRE

KEVIN STAHL - CHEF/OWNER

PHONE 475-4774 FAX 207-0267

PLEASE CALL FOR RESERVATIONS

A Letter From the Producer

For over 55 years Gateway has been a family business in the truest sense of the word. Back in the 50's my grandfather started the business with the creative inspiration of his 3 children. Eventually he and my uncle became partners and the rest of the family pitched in to keep the business running and growing. In the 60's the new theater was built and the family continued to pour everything they had back into the business. By the 70's my parents were running things with my sister and I close by - watching and learning. In the 80's we had our chance at the helm as Gateway took further steps forward. As the business matured throughout the 90's I was maturing as well.

Looking back on my 25 years as the 3rd generation producer at Gateway, there has always been a large responsibility on my shoulders. We need to keep pace with the strides being made on Broadway and continue to stand out and present our audiences with shows comparable to what they would see in New York. This is a difficult task and requires a delicate balance of creative input and keen business sense.

My father always inspired me in this area. His honesty, integrity and strong leadership skills were always something I strove to emulate. He treated people with respect and by doing so, received the same from them. He knew how to gather everyone's opinion together into a unified and effective force. It's hard to believe that he is no longer with us but I constantly feel his presence as he continues to inspire and guide me - as he did while he was still here. I dedicate this 2005 season to my dad.

Paul Allan

THE HARBOR SIDE

"Incomparable Seafood Restaurant"

Open 7 Days a Week
at 11:30 a.m.

All Major Credit
Cards Accepted.

Complete Dinners
Everyday.



Highly Recommended:

Newsday Zagat
Daily News NY Post
The Practical Gourmet
LI Business

Private Room available
for up to 120 people
Call for info

Complete Lunches*

Served Mon. - Sat.
11:30 a.m. - 3:30 p.m.
Starting at \$8.50

Complete Early Bird Specials*

Served Mon. - Fri. 3:00 p.m. - 6:00 p.m.
Sat. 3:00 p.m. - 5:45 p.m.
Starting at \$14.95

Sunday Specials

Includes: Soup or Salad,
Potato, Vegetable, Dessert &
Coffee. 11:30 a.m. - 4:00 p.m.
Starting at \$9.95

*Above specials not available for
groups of 15 or more or holidays.
Prices subject to change.

Complete Dinners starting at \$18.95 includes Appetizer, Soup or Salad,
Potato, Vegetable, Dessert & Coffee

Special Rates for Theatre Groups from 20 to 125. Call for more information.

503 E. Main Street, Patchogue, New York - Located on the corner of E. Main St. (27A) and Phyllis Dr.

(631) 654-9290

Before or After The Show

Late Night Dinner • Dessert and Coffee

All Baking
Done On
Premises



Breakfast,
Lunch and
Dinner

Open 7 Days
6:00 AM - 2:00 AM

Daily Specials

ROYAL OAK

Diner - Restaurant

Station Road and Sunrise Highway - Bellport, New York 11713

TEL. (631) 286-5757

Gateway
PLAYHOUSE

presents

Elton John and Tim Rice's

AIDA

Music by
Elton John

Lyrics by
Tim Rice

Book by
Linda Woolverton
and

Robert Falls & David Henry Hwang

Originally Directed on Broadway by Robert Falls
Originally Produced by Disney Theatrical Productions

with

NICHOLAS BELTON
DARREN MATTHIAS

J. BERNARD CALLOWAY
ELIZABETH STANLEY

ALEXANDER CASSELL
IDARA VICTOR

Producer
PAUL ALLAN

Associate Producer
JEFF BELLANTE

General Manager
GALE EDWARDS

Artistic Director
ROBIN JOY ALLAN

Company Manager
STANLEY SCHORR

Production Stage Manager
JOVON E. SHUCK

Scenic Design
KELLY TIGHE

Costume Coordinator
MARIANNE DOMINY

Lighting Design
DOUG HARRY

Costume Design
SUSAN BRANCH

Musical Direction by
ANDREW GRAHAM

Choreographed by
ALBERT ALTOVILLA

Directed by
MATT LENZ

AIDA is presented by special arrangement with Music Theatre International,
545 8th Avenue, New York, NY 10018

CAST OF CHARACTERS

(in order of appearance)

Amneris.....ELIZABETH STANLEY*
 RadamesNICHOLAS BELTON*
 AidaIDARA VICTOR*
 MerebALEXANDER CASSELL
 ZoserDARREN MATTHIAS*
 Pharaoh.....ERNEST MARCHAIN*
 NehebkaLAKISHA BOWEN
 AmonasroJ. BERNARD CALLOWAY*
 Children.....ANDREW DUFFY, DEVAND SNEED

MINISTERS, SOLDIERS, NUBIANS, GUARDS, AND PALACE WOMEN

ALBERT ALTOVILLA*, MATHIAS ANDERSON*, SACHIN BHATT, LAKISHA BOWEN,
 LADONNA BURNS, DUSTIN FLORES, MS. GNOMIAGRÉ, LIZ GRIFFITH*,
 DEUNDRE C. JAMES, ERNEST MARCHAIN*, CHRISTOPHER MESSINA,
 EMILY MITCHELL*, KATHY NEJAT*, MICHAEL SCIBILIA,
 ANTYON L. SMITH, MICHELLE VEINTIMILLA, TRACY J. WHOLF

UNDERSTUDIES

Aida.....EMILY MITCHELL*
 RadamesMATHIAS ANDERSON*
 AmnerisTRACY J. WHOLF
 Zoser/PharaohMICHAEL SCIBILIA
 Amonasro.....BYRON M. HOWARD

MUSICIANS

Conductor/Keyboard IANDREW GRAHAM
 KeyboardsJEFF HOFFMAN, CARA DOBIE
 HornAMIE MARGOLES
 DrumsGREGG MONTEITH
 Percussion.....PETE DESALVO
 ReedsMARGIE EWALD, LOU GALLO
 BassJAMES BETTINCOURT
 GuitarJOE LOSCHIAVO



The Musicians employed in this production are members of the American Federation of Musicians.



*Actors employed in this production are members of the Actors' Equity Association, the union of Professional Actors and Stage Managers in the United States.

ssdc

The Director/Choreographer is a member of the Society of Stage Directors and Choreographers, Inc., an independent national labor union.



Inquire
 about our
*Dinner
 Cruises*

Enjoy Live Music Wednesday thru Sunday Evenings
 Open for Lunch & Dinner 7 Days a Week

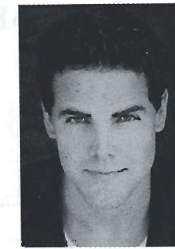
Located on the Patchogue River - 264 West Avenue, Patchogue • 654-8266



ALBERT ALTOVILLA



MATHIAS ANDERSON



NICHOLAS BELTON



SACHIN BHATT



LAKISHA BOWEN



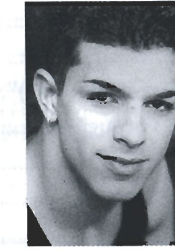
LADONNA BURNS



J. BERNARD CALLOWAY



ALEXANDER CASSELL



DUSTIN FLORES



MS. GNOMIAGRÉ



LIZ GRIFFITH



DEUNDRE C. JAMES



ERNEST MARCHAIN



DARREN MATTHIAS



CHRISTOPHER MESSINA



EMILY MITCHELL



KATHY NEJAT



MICHAEL SCIBILIA



ANTYON L. SMITH



ELIZABETH STANLEY



IDARA VICTOR



TRACY J. WHOLF



ANDREW DUFFY



DEVAND SNEED



MICHELLE VEINTIMILLA

SYNOPSIS OF SCENES AND MUSICAL NUMBERS

ACT I

Overture

"Every Story is a Love Story"	Amneris
"Fortune Favors the Brave"	Amneris, Radames, Soldiers
"The Past is Another Land"	Aida
"Another Pyramid"	Zoser, Ministers
"How I Know You"	Mereb, Aida
"My Strongest Suit"	Amneris, Women
"Fortune Favors the Brave (Reprise)"	Radames
"Enchantment Passing Through"	Radames, Aida
"Strongest Suit (Reprise)"	Amneris, Aida
"Dance of the Robe"	Aida, Nubians, Nehebka
"Elaborate Lives"	Radames, Aida
"The Gods Love Nubia"	Aida, Nubians, Nehebka, Mereb

INTERMISSION

Playbill Designed and Printed by Searles Graphics, Inc.

ACT II

"A Step Too Far"	Amneris, Radames, Aida
"Easy As Life"	Aida
"Like Father Like Son"	Zoser, Radames, Ministers
"Radames' Letter"	Radames
"How I Know You (Reprise)"	Mereb
"Written in the Stars"	Aida, Radames
"I Know the Truth"	Amneris
"Finale"	Radames, Aida, Amneris

WARNING – The photographing or sound recording of any performance is strictly prohibited. Gateway Playhouse offers a wireless sound enhancement system for the hearing impaired. Inquire at the box office for more information.

FIRE NOTICE — The exit indicated by a red light and sign nearest to the seat you occupy, is the shortest route to the outside. In the event of fire or other emergency, please do NOT run. WALK to that Exit. However, under normal circumstances, when leaving the Theatre, use the center rear exits. SMOKING is prohibited in the BUILDING, as required by the Suffolk County NO SMOKING Ordinance. Smoking in any area designated "No Smoking" renders the offenders subject to a fine, or imprisonment, or both.

Richard York
OF PATCHOGUE



631-475-1047
14 South Ocean Ave.
Patchogue
Four Stores
South of Main St.

Quality Footwear for the Entire
Family Since 1927

- Helpful, Friendly Service
- Areas Largest Selection
of Sizes & Widths AA-EEEE

Rockport, Easy Spirit, Florsheim, New Balance,
Stride Rite, Teva, Timberland, Skechers, Dexter,
Keds, Reebok, Dyeables, Topsider, Soft Spots,
Clarks, Naturalizer, Hush Puppies, Daniel
Green, FoamTreads, Toe Warmer Boots, etc.

10% OFF any purchase
with ad only

Excludes Easy Spirit, Dr. Martens & other offers. Expires 12/31/06



Clare Rose
Companies

255 Pinelawn Road
Melville, NY
(631)454-2337

72 Clare Rose Blvd.
Patchogue, NY
(631)475-1840

Proud supporter of
Gateway Playhouse
and the arts on
Long Island



www.northforkbank.com
Member FDIC

ROE AGENCY INC.
Insurance Since 1898

Personal Insurance
Commercial Insurance
Property, Casualty
Life
Health
Financial Services

◆ 125 East Main Street ◆
◆ Patchogue, New York 11772 ◆
Phone: 631.475.4000
Fax: 631.475.7648

Old Inlet Inn



Fine Dining Since 1980
Dinners from 5:00 p.m.
Sunday Brunch 12 - 3:00 p.m.
Sunday Dinner 5 - 9:00 p.m.
Closed Mondays
Ten Minutes From
The Beautifully Renovated
Patchogue Theater

Piano Bar Fri. & Sat. 9:00 p.m. - 1 a.m.

Walter A. Roe, Proprietor

108 So. Country Road, Bellport
286-2650

10% Entrée Discount
with Theatre Tickets

CAST BIOGRAPHIES



MATHIAS ANDERSON (*Ensemble/u/s Radames*) recently finished *Beauty and the Beast* (Fox Theatre Detroit and N.C.Theatre Company) under the direction of Matt Lenz. Other credits include *The Radio City Christmas Spectacular*, *Empire the Musical* (Pre-Broadway workshop/East Coast Premier), *Full Monty* (Weston Playhouse), *Cats* (Marriott Theatre, Lincolnshire) and a national commercial for E-Bay. Thanks to the Bloc Agency and my family. LUKMD! Proud member of AEA.

NICHOLAS BELTON (*Radames*): this is Nick's Gateway debut. His credits include: Off-B'way: *My Life With Albertine* at Playwrights Horizons (u/s Marcel), *Talk of the Town* at the Peccadillo Theatre Co. (Harold Ross), and the pre-B'way workshop *In That Valley* (Henry). National Tour: *Casper (the Friendly Musical)* w/ Chita Rivera. Regional: *Children of Eden* at Fords Theatre (Abel), *Candide* (Candide), Pittsburgh CLO, Idaho Shakespeare Festival, Dallas Theatre Under the Stars, and soloist for the Cincinnati Pops. Training: Cincinnati Conservatory. Love to Pop, Mom, Charlie the Boxer, all the siblings, and the Nicolosi folks.

SACHIN BHATT (*Ensemble*) of St. Louis, MO received his B.S. in Vocal Performance with an outside field in Theatre from Indiana University. He moved to NYC a few months

ago, and is extremely excited to be a part of this production. Sachin will be playing the role of Chino in the upcoming Asian/European Tour of *West Side Story* with Broadway director/choreographer Joey McKneely. Special thanks to NY Bloc Office, Wysandria, and of course Shruti, Ashish, and my Akash.

LAKISHA BOWEN (*Nehebka/Ensemble*) was last seen at the Gateway as the mistress in *Evita*. She made her New York debut as part of the Negro Ensemble Company's production of *Colored People's Time* in October 2004 and was most recently seen at The Collective: Unconscious Theatre performing in a one-woman rendition of *The Yellow Wallpaper*. Past credits include: *Our Town* (Emily Webb); *A Chorus Line* (Maggie); *Pirates Of Penzance* (Kate); Premier of *Over The Rainbow...* at Arena Theatre of South Africa (Maggie/Wicked Witch); Premier of *Rosa Parks* (Young Rosa); as well as *Space* by Steppenwolf's Tina Landau (Singer). Lakisha holds her BFA in Musical Theatre Performance from Western Michigan University where she spent six months training in Cape Town, South Africa. Lakisha attended the SITI Company Summer Intensive under the direction of Anne Bogart and served as a company intern in 2004. Many thanks to my family, friends, and Ike. I love you all!

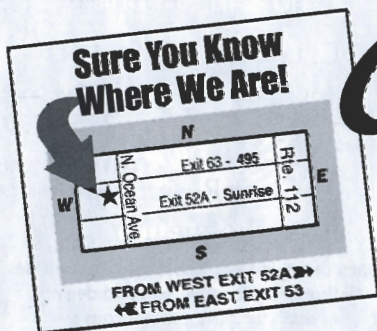
WE'RE SUFFOLK COUNTY'S

BEST KEPT TRUCK SECRET!



2005 Envoy

"SERVING THE COMMUNITY SINCE 1952 AS YOUR GMC TRUCK HEADQUARTERS!"



Cassel



GMC TRUCK SALES

550 North Ocean Avenue • Patchogue, NY
3 Miles South of I19 • 1 Block North of Sunrise Hwy.

1-800-758-5811

Find us at www.GMbuypower.com

Frank R. Egan, DDS, PC
Certified, American Board of Orthodontics



Hospital Road
Professional Center
250 Patchogue-Yaphank
Road - Suite 14
East Patchogue, NY 11772
(631) 289-3990

www.TeethOnTheMove.com

BELLPORT JEWELERS



5 Bellport Lane, Bellport
286-7700

FREE Watch Battery
Replacement w/ your ticket stub
Standard Batteries Only

We buy and sell Jewelry, Coins, Stamps
Repairs on all jewelry & watches on premises
Authorized Citizen & Movado dealer
www.bellportgalleries.com

LADONNA BURNS (*Ensemble*) is thrilled to be making her Gateway Playhouse debut in *Aida*. Originally from Indianapolis, LaDonna has most recently completed the National Tour of *RENT* (Seasons of Love Soloist). She has also appeared as the Sour Kangaroo in the National Tour of *Seussical the Musical*. Regional credits: *Smokey Joe's Cafe* (BJ), *Satchmo*, *Children of Eden* (Eve/Mama Noah), *Little Shop of Horrors* and *How to Succeed in Business...*(Miss Jones). LaDonna would like to thank God for His many blessings and her family and friends for their continuous support. Thank you Booth! In loving memory of JaMarcus, you'll always be in my heart.

J. BERNARD CALLOWAY (*Amonasro*) was recently seen in the musical workshop production of *Skin of our Teeth* at the McCarter Theatre, music and lyrics by John Kander & Fred Ebb. Several of his regional credits include: *Piano Lesson* (Boy Willie), *A Soldier's Play* (Davenport), *Emperor Jones* (Jones), *Three Penny Opera* (Macheath), *Jesus Christ Superstar* (Caiphus). Film & Television: *Law & Order*, *Law & Order: SVU*, *Rescue Me*, *All My Children*, and *One Life to Live*.

ALEXANDER CASSELL (*Mereb*) is ecstatic about his acceptance into the Gateway family as he makes his debut in *Aida*. At the age of five he was compelled to

the theatre. Determined to make his vision a reality, he was nurtured by the likes of Vanessa L. Williams and Charles S. Dutton when he played Piggy in the revival of *St. Louis Woman*. He believes that everything happens for a reason and actively pursues life one day at a time. Currently studying musical theatre at Carnegie Mellon, Alexander will return in August to begin his sophomore year. Great love to all my family. Peace, happiness, and thanks to the Gateway Playhouse.

DUSTIN FLORES (*Ensemble*) is thrilled to be making his Gateway debut in *Aida*. Originally from California, he studied dance with the internationally known West Coast Performers touring with them in the US, Asia, and Europe. After graduating from the American Musical and Dramatic Academy in New York City, he accepted a contract with Royal Caribbean International playing the role of "Ricky Martin" in their hit revue *Superstars in Concert*. For the past three years he has served as head choreographer for the Theatre Arts Workshop in Westchester, NY. Other credits include: *Gypsy* (Tulsa), *Footloose* (Willard), *42nd Street* (Billy), *The Boyfriend* (Tony), and *A Chorus Line* (Mike), along with countless other ensemble and dance role in many others. Dustin would like to thank his friends for all their love and support.

MS. GNOMIAGRÉ (*Ensemble*): A preacher's kid and the youngest of four girls, she's graced the stage since the age of twelve in her first professional production tour, with the American Family/Prince Music Theater's Rainbow Company. Gnomia joined the CFO fresh off the road with a local theater company in 2001. As a background singer for Cee Knowledge and the Cosmic Funk Orchestra, she toured nationally for about two years before being presented with the opportunity of a life time: recording her first solo project at the legendary Sigma Sound Studios (with Sound House productions). She's worked with legends such as Bobby Eli (MFSB/Disco Inferno), Joe Tarsia (Founder of Sigma Sound House/ Vet. recording engineer), and Dj Miz (World Supremacy winner/Eve). Through her career she's also had the opportunity to perform for and with actors Monica Calhoun (The Best Man/Players Club), Mel Jackson (Soul Food), Leon (The Temptations), and none other than First Lady Laura and President George W. Bush.

LIZ GRIFFITH (*Ensemble/Dance Captain*) is thrilled to be returning to the Gateway Playhouse after performing last summer as Bombalurina in *Cats* and as a Kit Kat Girl (u/s Sally) in *Cabaret*. Favorite roles include: The Baker's Wife (*Into the Woods*), Sylvia (*Sylvia*), Sheep #1 (*Candide*), and Louise (*Gypsy*). Liz holds a BFA in Musical Theatre from the

University of Michigan. Next up: Liz will perform this fall in the pre-Broadway workshop of ABBA's *Kristina*. Lots of love to her family and friends—thank you, thank you, thank you for your unfaltering support!

DEUNDRE C. JAMES (*Ensemble*) DJ is no stranger to the Gateway stage, having performed in *Kiss Me Kate*, *On the Town*, *The Holiday Spectacular*, and *Cabaret*, as well as *Evita* and *Ain't Misbehavin'* earlier this season. DJ recently Asst. Choreographed the Nat'l Tour of *My One and Only*. A graduate of the University of Houston with a BFA in Theatre, DJ is also an alumnus of Anne Reinking's Broadway Theatre Project ('99-'00). Many thanks to his family and friends back in Texas for their love and support. God Bless & Amor'.

ERNEST MARCHAIN (*Pharaoh*) is glad to be back at Gateway after making his debut as Magaldi in *Evita* earlier this season. Last year Ernest was seen in the Off-Broadway, Drama Desk Award winning show *Toxic Audio*, a show performed entirely a cappella! He also performed both as The Beast and Gaston on the US National Tour of *Disney's Beauty & The Beast*. He has spent the better part of the last 11 years on skates in ALW's *Starlight Express* in the Las Vegas and German companies playing Rusty in earlier years and more recently as the bad boy Greaseball. He just completed a reading of the new 70's

Swan Bakery

All Occasion Cakes

Guy Gagliano

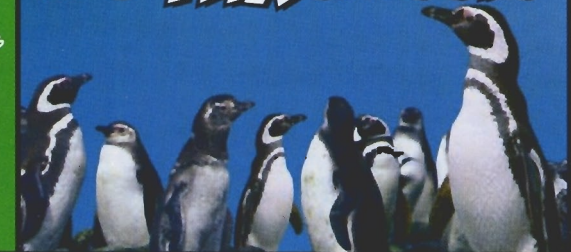
The Official Bakery of Gateway Playhouse

15 South Country Rd., East Patchogue, NY 11772
(631) 475-9626

WE'RE COMING TO ATLANTIS MARINE WORLD THIS SUMMER, AND SO SHOULD YOU! BRING ME WHEN YOU VISIT AND GET \$1.00 OFF EACH ADMISSION. THERE'S ALWAYS SOMETHING NEW AT ATLANTIS MARINE WORLD. CALL US AT 631.208.9200 FOR DETAILS.



IT'S TUX SEASON!



AIDA: Show History

In 1994 *The Lion King* animated movie was an overwhelming success and Disney executives begin talking about what the next project with composer Elton John and lyricist Tim Rice could be. Disney had acquired the rights to a children's book by opera singer Leontyne Price retelling the Verdi opera *Aida*, but John and Rice were not interested in making another animated film. A stage musical was proposed and Linda Woolverton (*Beauty And The Beast*) was hired to write the script. She threw out the Price book and worked from the original story.

Two years later, six musical numbers were presented to Disney executives at a New York workshop and a demo record was made with Elton John, with a 1997 opening date aimed for. That date was soon pushed up to Autumn 1998, and that Spring auditions were held for a pre-Broadway premiere at Atlanta's Alliance Theatre. Disney executives had qualms about the name, and instead chose "Elaborate Lives".

At the end of June 1998 it was announced that Heather Headley would play Aida and Sherie Rene Scott would play Amneris. The Atlanta run of *Elaborate Lives* was plagued by technical difficulties caused by an over-ambitious set whose main element, a giant pyramid that unfolded into triangular pieces, rarely worked. Only a few days after the show closed, Disney announced the firing of director Robert Jess Roth, choreographer Matt West, and most members of the design teams. Robert Falls, artistic director of the Goodman Theater in Chicago, who had never directed a Broadway musical before, replaced Roth. Bob Crowley, well known in England for his work with the Royal Shakespeare Company, was hired as designer. The Tony-winning (*Tommy*) Wayne Cilento was announced as choreographer. Disney executives also changed the show's name back to *Aida*. Woolverton's script was thought to be too simplistic, and Henry David Hwang (*M. Butterfly*) was hired to restructure her book to appeal to adults. Disney then formed a new company, Hyperion, which would handle *Aida* and all future adult-oriented shows.



A concept album was released in 1999, featuring singers like Sting and LeAnn Rimes, as well as Heather Headley, who along with Sherie Rene Scott agreed to reprise their roles for Broadway. The role of Radames was recast with Adam Pascal (*Rent*). Another pre-Broadway opening for the show was set for November 2000, in Chicago. The logo of a pyramid, used on the concept album, was scrapped in favor of the two-faces design used today.

On the second day of Chicago previews, the set piece acting as Aida and Radames' tomb malfunctioned, causing the cancellation of several performances. The piece was cut from the show, and *Aida* ran without further incident until January 9, 2000. It then underwent more rewrites in preparation for Broadway.

Disney wanted *Aida* to open in a showplace, so when *Titanic* closed in the Lunt-Fontanne Theatre, *Beauty And The Beast* was moved there, freeing up the Palace Theatre for *Aida's* March 2000 opening. The show ran on Broadway for over four years, played 1,852 performances, won four Tony Awards, and the original cast album won a Grammy Award. The U.S. Tour, originally scheduled April – September 2002 was extended twice. International productions have been mounted in The Netherlands, Estonia, Japan and Germany, and an international tour is to begin later this year ♦

WHOS WHO

disco musical *Last Dance* directed by Phil McKinley of *Boy From Oz* fame. A trained stuntman, he's done various stunt shows in Orlando and Las Vegas and feels just as comfortable singing on stage or diving from 10-meter platforms! Following *Aida*, Ernest will be hitting the road on the US National Tour of *Joseph...Dreamcoat*. Ironically, he will be understudying Pharaoh! A proud member of Actors Equity Association since 1994, he would like to thank C&J at Clear Talent Group!

DARREN MATTHIAS (*Zoser*): Previously at Gateway: *Jekyll & Hyde*, *Funny Girl*, *Tours: Macbeth* (London, Antibes, Nice, Valbonne), *Tommy*, *Seussical*, *Joseph...Dreamcoat*. Regional: *Another Time*, *Stepping Out*, *The Song of Jacob Zulu* (Steppenwolf); *Riverview*, *Never the Sinner* (Goodman); *The Wizard of Oz* (Ordway and Cincinnati Playhouse); *Lizzie*

Borden (Goodspeed); *Equus*, *Candide*, *The Rocky Horror Show* (Cincinnati Playhouse); *Arcadia* (Clarence Brown); *Bent*, *The Shadow Box*, *Poor Super Man* (Phoenix); *Of Thee I Sing* (Remains); *Illyria* (Shakespeare Theater of NJ); *90 North* (Kennedy Center); *Aida* (Actor's Playhouse); Film: *Bringing Out the Dead*, *For Love of the Game*, *Center Stage*, *At First Sight*, *The Definite Maybe*. TV: *Sex and the City* and *Oz* (HBO), *Law & Order* and *Law & Order: SVU* (NBC), *Chappelle's Show* (Comedy Central).

CHRISTOPHER MESSINA (*Ensemble*): A native New Yorker, Chris has been singing and dancing since the age of six. He just recently returned from the National Tour of *Seven Brides for Seven Brothers*. His regional credits include *Into the Woods* (Jack), *My Fair Lady* (Freddy), *The Sound of Music* (Rolf), and *The Wizard of Oz* (The Scarecrow). This is



MAZZEI'S

RESTAURANT · BAR · CATERING

PRIME AGED STEAKS • PASTAS • SEAFOOD

The New Sophisticated Restaurant That Becomes A Dance Club After 10:00 p.m.

OPEN TUESDAY - SUNDAY

Neat Casual Attire • Casual Dining at the Bar • Catering up to 120

Elegant Dining in Main Room • DJ after 10:00 p.m.

Please 28 and over after 10:00 p.m. • Outside Patio for your Dining Pleasure

Live Music Every Sunday - Featuring Steve Strecker from "The 70's Experience"

363-6666

7 MONTAUK HIGHWAY • BLUE POINT • WWW.MAZZEIS.COM

Swezey

FUEL CO., INC. - EST. 1919

Suffolk's Largest Family Owned Oil Company

- Automatic Oil Delivery Service
- 24-Hour Emergency Service
- Budget Plans That Pay You Interest
- Expert Installation Of Boilers, Burners, Hot Water Heaters & Pool Heaters



475-0270

51 RIDER AVE., PATCHOGUE

L.B.'s AUTO COLLISION, INC.

150 South Country Road
Bellport Village

Day (631) 286-0840
Eve (631) 803-2309
Fax (631) 286-5335

Free Estimates • 24 Hour Towing
Expert Color Matching • Painting
Collision • N.Y.S. Licensed



10% OFF

with mention of this ad

Irish Coffee



Pub

at

Bellport Country Club

always open to
the public.

The favorite for
pre- and post-show
dining.

Conveniently located between
Gateway Playhouse and
Patchogue Theater on
SOUTH COUNTRY ROAD, in
BELLPORT VILLAGE

Available for groups and
small parties.

FOR RESERVATIONS
CALL
286-4227

Also visit

Irish Coffee



Pub

on CARLETON AVENUE
in EAST ISLIP
277-0007

live or work **in Suffolk?**

OPPORTUNITY

discover the **strength in membership**

Now you don't have to choose between personal service and better rates. Membership is now open to anyone who lives or works in Suffolk County. At Suffolk Federal Credit Union, you can choose from a full menu of financial products and services and because we are not-for-profit, you'll save money, too!

Whether it's for yourself, your employees, or your business, Suffolk Federal Credit Union has the products and services you want and delivered by people who really care. Higher rates on savings, better service, and lower rates on loans is how we've grown over the past 38 years. Stop by one of our branches, check us out on-line, or give us a call to get more information.

www.suffolkfcu.org
631.924.8000



UNPARALLELED VALUE & UNRIVALED SERVICE

Islandia
1282 Motor Parkway

Lindenhurst
Sunrise Plaza
656 N Wellwood Avenue

Medford
3681 Horseblock Road

Miller Place
Aliene Shopping Centre
691 Route 25A

Riverhead
Paeonie Plaza
176 Old Country Rd (Rt. 58)

Chris' debut performance at Gateway, and he would like to thank the Gateway family for giving him this wonderful opportunity. He would also like to thank his family and friends for all their love and support. "Happiness is wanting what you have."

EMILY MITCHELL (*Ensemble*/u/s *Aida*) joins *Aida* after touring with the European production of *Hair*. In addition to performing abroad, she has been in US productions such as *Hairspray* (Broadway), *Dreamgirls* (Regional), *Children of Eden* (Regional), and *Beehive* (Regional). Although she is currently a proud New Yorker, she originally hails from Southern California where she earned her MFA at SDSU. Special thanks to her family and friends for their constant love and support.

KATHY NEJAT (*Ensemble*) is honored to be returning to Gateway to be a part of *Aida*. She was last seen here as Rumpelstiltskin in *Cats* and Mimi in *Miss Saigon*. National Tour: *Joseph...* starring John Secada. Regional: Mimi in *Miss Saigon* (Paper Mill Playhouse, Seattle's 5th Avenue Theatre and Casa Mañana), Francisca in *West Side Story* (North Shore Music Theatre), Tuptim u/s in *The King and I* (Fulton Opera House). TV: *Dance in America* (PBS), *One Life to Live*, *The Miss America Pageant*, QVC. Commercials/Print: Verizon, Olympus, Neutrogena, Hoover, Lucille Roberts Fitness, Amena Communications. Much love to the fam and "h.e." to Ben.

MICHAEL SCIBILIA (*Ensemble*): This is Michael's second appearance on the Gateway stage, after making his debut this year in *Evita*. Michael is a graduate of AMDA. Recent cred-

its include: *Seven Brides for Seven Brothers* (National Tour), *Cinderella* (National Tour), *West Side Story* (Asst. Dir./Chorus, Riff/Action), *Crazy for You* (Bobby Child), *Evita* (Che), *Pirates of Penzance* (u/s Frederick), *My Way* (Tenor Soloist). Michael thanks his family and friends for their love and support, and says "Be a storyteller; the world will always need them."

ANTYON L. SMITH (*Ensemble*): As a graduate of AMDA and a new face in the industry, Antyon Smith is thoroughly grateful and thrilled to be a part of the cast of *Aida*. Since he was a child growing up in Xenia, OH, he's always wanted to be a stage performer—and now he has the chance to do what his heart loves. Antyon believes there's nowhere to go but up after doing this great production. He thanks his mother Fragina R. Brown, his roommates Charity, James, Lindsay, and Jason, and most of all, God!

ELIZABETH STANLEY (*Amneris*) is thrilled to be making her Gateway debut in *Aida*. This spring she toured the NYC public schools in *On the Town*. Favorite regional and touring credits include: *Cabaret* (Fraulein Kost/Fritzie), *Side Show* (Daisy), *Honky Tonk Angels* (Darlene), *Sound of Music* (Maria), *Cowgirls* (Rita), and *Noises Off* (Brooke). Elizabeth is a graduate of the Indiana University School of Music. Many thanks to her supportive family and friends as well as Teresa and Kevin. Peace.

IDARA VICTOR (*Aida*) began her musical career with ten years of training in classical piano. She attended the Lee Strasberg Theatre Institute and graduated with a BS from the Wharton School of the University of Pennsylvania. Favorite roles include: Regional: Charlaine in *Ain't Misbehavin'* (Bristol Riverside Theatre), Lutiebelle in



La Margherita
The Original Brick Oven Pizza

Theatre Groups Welcome

Complimentary Appetizer with your lunch or dinner entree when you present your show tickets

1229 Station Road, Medford • 924-0048 Fax 924-0094

1/2 Off The Lowest Ticket Price...



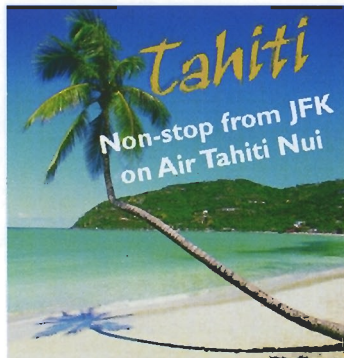
20% OFF Any One Item With This Coupon

vf OUTLET

Outlets at Bellport
Rt 27, Sunrise Hwy E, Exit 56, Station Rd, head North, (631) 286-7227

Expires 12/31/05. Coupon must be presented at time of purchase. One coupon per purchase. May not be combined with any other offer. May not be used towards the purchase of gift cards. May not be used on previous purchases. No photocopies or reproductions accepted. No cash value. LOC012 058

Vanity Fair Lee Wrangler Healthtex JANSPORT



Tahiti
Non-stop from JFK
on Air Tahiti Nui

9 Night Island Hopper

2 Nights at Sheraton Tahiti
3 Nights at Sheraton Moorea and
4 Nights in an overwater villa at
Bora Bora Nui

Sheraton
HOTELS & RESORTS

Call for details!

Bay Travel and Tours

440-B South Country Rd.
631-447-6440
info@baytravelandtours.com

Happy VACATIONS
Air Tahiti Nui
Experienced professional
personalized service

From The Ground Up:

CREATING AIDA

When *Aida* closed on Broadway last September, it paved the way for select professional theatres around the country to obtain the production rights. Gateway's producer, Paul Allan, seized the opportunity to make it Gateway's big summer blockbuster for 2005. Allan says, "I felt *Aida* was the perfect show for us to build an exciting new production around, and we began putting together a creative team that would bring all their inventiveness to bear on the project."

Matt Lenz, who was part of the creative team pre-Broadway when *Aida* (then called *Elaborate Lives*) was first being workshopped in Atlanta, was hired as director. Lenz, who performed here at Gateway early in his career, set about streamlining the elements of *Aida* to tell the story in the clearest way. Lenz explains, "In Atlanta, the show had too many technical elements, and we ran into problems. I wanted to peel away all the stuff and make it about the people. It's a passionate and ultimately tragic love triangle that everyone can relate to."

Scenic Designer Kelly Tighe, who previously designed Gateway sets for *Jesus Christ Superstar* and *Cats*, was engaged to create a completely new set from the ground up. Sometimes Gateway will use elements of other sets in its productions, for example, the deck of *Titanic*



was recycled into the bridge for *Jekyll And Hyde*. For *Aida*, nothing has been used before; literally every set piece and drop on stage has been built, painted and sewn by Gateway technicians within the last few weeks.

Lenz and Tighe have similar philosophies concerning *Aida*, that the set should support the action without taking the audience away from it. Since the story is told in either the desert, a palace, or on or near the water, Tighe infused all of those elements into his design. "The set is literally an enormous sandbox downstage," he explains, "with pieces that can revolve over the sand, like the top of a giant saltshaker. This lets us have a flexible space to keep the show moving. I am not a big fan of turning out the lights, moving things around, and turning them back on." Fabrics also play heavily into the show's design - linen and cot-



Long Island Film Festival

- Box Office: 631-207-1313
- Tickets: \$30 / 3-Day Pass ~ \$15 / 1-Day Pass
- PatchogueTheater.com

Also available through the Patchogue Chamber of Commerce
• Phone: 631-475-0121

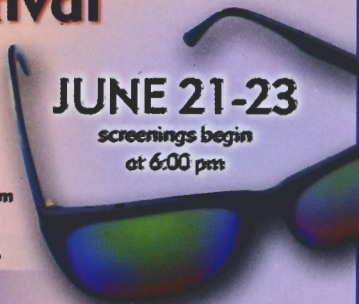
For further information: Go to Lifilm.org, E-mail Suffolkefilm@yahoo.com or call 631-669-2717

At the Patchogue Theatre for the Performing Arts

71 East Main Street, Patchogue, NY 11772

JUNE 21-23

screenings begin
at 6:00 pm



ton being a physical necessity to cope with the intense African heat, as well as an economic anchor for the country at the time. Lenz says, "I felt that if we turned a fan on this show it should billow." Dozens of fabrics from theatrical suppliers were considered before Tighe selected those now seen on the stage. However, while the design is rooted in an Egyptian and Nubian aesthetic, it is not a literal representation. Tighe says, "It's a fine line. We want to be true to the location and period, but we are looking through a contemporary lens. The music is Elton John, and it's a Broadway show, not a documentary."

This contemporary lens is also focused on the casting. Lenz and casting director Robin Joy Allan selected a multiracial cast to visually underscore *Aida's* conflict. "While there were a few people from different cultures living in Ancient Egypt, it was not a melting pot," Ms. Allan explains, "but the story is of a couple who cannot be together because of their different ethnic backgrounds." Lenz adds, "It's such a vital story and I love the opportunity to do it with younger actors. I think the show is about the characters learning for the first time in their lives what they are really made of." The actors who would ultimately win roles had to be extraordinary singers as well, as the music drives much of the story. "Elton John is one of our generation's most talented songwriters," says Ms. Allan, "the singers must be able to do the score justice."

Now that *Aida* is open, Lenz has moved on to his next project - directing *Hairspray* in London. Ms. Allan is finalizing the cast for *Sugar*, and Tighe and his team are building the set for *The Full Monty*. And of course, Mr. Allan is already contemplating what Gateway's next blockbuster will be. ♦

THE
BANK OF
NEW
YORK
LONG ISLAND REGION

24-hour ATM

32 Station Road, Bellport,
New York 11713

(631) 286-4200

Member FDIC 1986 The Bank of New York

South Country Inn

Fine Italian and
Continental Cuisine

**Food Like Mama
Used to Make**

Moderately Priced Dinners
Starting at \$12.95

Early Bird Specials Available
Daily 3:30 - 6 PM

Daily Lunch Specials
Tuesday - Sunday

Complimentary glass of wine
with your lunch or dinner when
you present show tickets or this ad.

A short drive from both theatres
on South Country Road.
Special attention to
our theatre goers.

Parties & theatre groups welcome.

Stop for dessert or a cocktail
after the show.

Open Tuesday - Thursday,
Noon - 11 PM

Friday - Sunday,
Noon - Midnight

Reservations recommended

668 South Country Rd.
East Patchogue

758-1919

Bellport CHOWDER HOUSE

*In The Bellport Hotel
Built 1896*



An Eating and Drinking Tradition

FULL MENU

FULL BAR

Open Daily For Lunch and Dinner
Seven Days A Week

Sunday - Thursday till 11:00 p.m. Friday & Saturday till Midnight

SPECIALIZING IN FRESH LOCAL SEAFOOD
AT AFFORDABLE PRICES

STEAKS - CHICKEN - PASTA

*Before and After the Show You'll Want to Meet and Eat At
THE CHOWDER HOUSE*

TAKEOUT

CATERING

19 Bellport Lane • Bellport Village • 286-2343

WHOS WHO

Purlie (Cagle & Co.), Sarah (u/s) in *Ragtime* (Cultural Arts Playhouse). New York: Beth/Brown/Harris in *Shirtwaist* (Flying Fig Theatre Co.), Jezzie in *In Search of a Better Life w/ Elvis* (The Drove Theatre Co.). Film/TV: *Starved* (FX Network). Though she is a Long Island native, this is her first performance with the Gateway Playhouse and she thanks all of the cast and crew for a wonderful experience in a beautiful show. Thanks to her family and friends for their continued love and support.

TRACY J. WHOLF (*Ensemble/u/s Amneris*) is extremely grateful to be making her Gateway debut in *Aida*. She recently completed a nine month tour of duty aboard the Disney Cruise Line and performed the roles of Belle (*Disney Dreams*), Sleeping Beauty (*The Golden Mickeys*), and Meg (*Hercules, the*

Muse-icle.) Tracy is a graduate of Northwestern University and credits her wonderful family and friends for continually providing the support she needs to pursue her dreams.

PAUL ALLAN (*Producer*) Paul has been involved in theatre since before he can remember. In the early days he spent his summers following around his grandfather who had his hands full trying to make ends meet—running a theatre in the 60's. Paul grew up at Gateway, looking forward to each summer and being able to do more each year. By the time he was a teenager he was an integral part of the back stage crew and was the self-appointed handy man as well. In the 80's as a young Gateway producer, Paul spent part of the winter months working in NY on many off-Broadway shows serving as

BAY STREET THEATRE

COMEDY
Club
Tickets \$38

2005 TARGET MAINSTAGE SEASON ©

PIPPIN

book by Roger O. Hirson
music and lyrics by Stephen Schwartz
choreography by Joey McNeely
music direction by John McDaniel
directed by Jack Hofsis

Cast includes:
B.D. Wong
Rachel York
Karen Ziemba

August 9 - September 4

SLEUTH

by Anthony Shaffer
directed by Will Frears
cast includes Tony Roberts

July 12 - 31

Summer Gala
BENEFIT BASH
SATURDAY, JULY 23 • 6:30 PM

For info call the Development Office:
631-725-0818 ext. 106

SUSIE ESSMAN
July 18 • 8pm

PAULA POUNDSTONE
July 25 • 8pm

RICHARD JENI
August 15 • 8pm

TOM PAPA
August 22 • 8pm

LEWIS BLACK
August 29
8 & 10pm

SOLD
OUT

BOX OFFICE 631.725.9500 • LONG WHARF, SAG HARBOR
Order tickets online at www.baystreet.org

technical supervisor/production manager. At the same time he co-founded a touring company whose shows traveled throughout the US and other countries worldwide. The set rental company was also founded at this time and Gateway scenery is constantly being trucked to various theatres across the country. The main focus, though, is still the productions he produces here for our patrons—and this season begins with his 150th! Paul wishes to dedicate this season to his father whose presence is constantly felt as he continues to inspire and guide him—as he did while he was still here.

MATT LENZ (Director) is the Associate Director of *Hairspray* on Broadway, as well as the First National Tour and Toronto productions. For several years he served as Resident Director for Disney's *Beauty and the Beast* on Broadway and for the national tours. Also for Walt Disney Theatrical Productions, he was Assistant Director for the Elton John/Tim Rice musical, *Aida* in its World Premiere production as *Elaborate Lives: The Legend of Aida* at the Alliance Theatre in Atlanta. Matt's recent directing credits include: *Disney's Beauty and the Beast* at The MUNY in St Louis, The North Carolina Theater and Michigan Opera Theater, *Elton John and Tim Rice's Aida*, *Dirty Blonde* and *Love! Valour! Compassion!* at the Zachary Scott Theatre Center in Austin, the

world premiere of *Scituate* at the Stamford Center for the Arts, the Los Angeles production of *Confidentially, Cole* at the Tiffany Theatre on Sunset, *Twelfth Night, Hair, The Ten Percent Revue, The Who's Tommy* (National Tour), Bobby Rivers' *We Can't All Be Matt Lauer* and the world premiere of Alan Ball's *The Amazing Adventures of Tense Guy* (Off-Broadway). Matt is dedicated to the development of a variety of new plays and musicals and has also directed numerous workshops and readings. He is a member of the Lincoln Center Directors' Lab.

ANDREW GRAHAM (Musical Director): Originally from McArthur, Ohio. Andrew recently completed the first National Tour of *Thoroughly Modern Millie*. He has also served as Musical Director/Conductor on the National Tours of *Seussical* starring Kathy Rigby (First National), *Oliver, The Music Man, Footloose*, and European tours of *Hair and Grease*. Some regional credits include: *Aida* (NSMT), *Fame* (NSMT), *Little Shop of Horrors* (Baton Rouge), *A Chorus Line* (Florida), *Will Rogers Follies* (Texas) and *Big River* from the Capital University in Columbus, Ohio and Trinity College of Music in London. Upcoming projects include *Avenue Q*, opening in Las Vegas this fall.

ALBERT ALTOVILLA (Choreographer/Ensemble): Previous mountings for Gateway include *Jesus Christ Superstar* and *Miss Saigon* here in Patchogue; *Pippin, Kiss Me Kate!*, and *On The Town* back at the barn in Bellport. Behind the scenes he was spotlight operator number two for *Swing!*, *The King & I*, and *Phantom* alongside the unfathomably talented Joe Loesch. Regionally: Sacramento Music Circus, West Virginia Public, Austin Musical Theatre, Disney's Magic Cruise and on Broadway at the New Amsterdam Theatre in *Chess* for the Actors' Fund. Last summer he choreographed dance sequences for Charles Busch's *Psycho Beach Party* at Pisces Moon Theatre Company in Santa Cruz, California. He is a member of Actors' Equity Association, a unionized league of professional stage managers and stage actors. Thanks to the powers that be. Peace on earth and in space.

ROBIN JOY ALLAN (Casting and Artistic Director) has been the Casting Director at Gateway for the last ten years. Previous to moving back home, she was the Associate Casting Director on the feature films; *Parenthood, When Harry Met Sally, Lord of the Flies, Side Out* and *Ghost*. She also cast several television series, pilots and MOW's, whilst in Los Angeles for five years. Along with her Artistic and Casting Director duties, she is the force behind Gateway's Acting School Division, where she teaches the advanced classes. Her best friend is her daughter Hayley who teaches her every day. Music, her great passion, was infused into her soul by her parents. She devotes any creativity she is able to conjure up this year, to her father, Stanley Allan, who always listened and heard her voice.

COSTUME WORLD



Founded in 1975 by Marilyn Wick, Costume World's 35,000 sq. ft. flagship store is located in Deerfield Beach, Florida and serves as their main facility for theatrical productions. In addition, they maintain over 20,000 sq. ft. between their Dallas and Pittsburgh branches.

Costume World has over 500 shows, including original Broadway wardrobes, ready to be customized for your productions, whether you decide to rent or to own.

For over 27 years, they have been designing musicals and operas and answering the needs of their prestigious clientele.

Complete theatrical packages include rental rates, measurement forms, costume plot, costume rental agreements, as well as any photography requests.

Conveniently, Costume World's costume and opera plot service is available at www.costumeworld.com or call toll-free at 1-800-423-7496.

Mickey Felice's "On Main"



Sizaks, Seafood, Pasta
Catering On or Off Premises

Tuesday - Pasta - \$9.95
Wednesday - Seafood - \$12.95
Thursday - Prime Rib \$13.95

411 W. Main Street, Patchogue, NY 631-289-1700

Long Island Science Center

11 West Main Street, Riverhead

Open to the Public	Fun for the entire Family	Kids B-Day Parties
-----------------------	---------------------------------	--------------------------

Call today for more info... Summer
(631) 208-8000 Camp & Programs

\$1 off admission with this ad

THE IRISH COMEDY OF



HAL ROACH
Patchogue Theatre
Nov. 20, 3 p.m.

631-475-0121

PLUS

\$35



The Irish Sorceros
Produced by
The Greater Patchogue
Foundation

www.patchogueattheatre.com

DOUG HARRY (Lighting Designer) is happy to be designing another Gateway production. His past credits here include last year's *Carousel*, *Cats* and *Fosse*, and also *Miss Saigon*, *Scarlet Pimpernel*, *Ragtime*, *Titanic*, and *Dracula the Rock Opera*. Doug holds a degree in Theatre Production and Stage Management from the Guildhall School of Music and Drama in London, UK. He is currently Head of Lighting for Mohegan Sun Casino. And his company 'DarkSide Design' does corporate work for General Motors, Six Flags Theme Parks, New Haven Symphony, Calvin Klein and numerous other clients. Doug lives in Connecticut and is married with two children, two dogs, various cats and a toad. He very much enjoys his short vacations in Bellport!!

SUSAN BRANCH (Costume Designer) has designed costumes for over 150 productions, and she is delighted to make her debut with Gateway Playhouse. In New York, Susan designed *Griffelkin* for New York City Opera and numerous Off-Broadway productions, including *Hello Muddah*, *Hello Fadduh!*, *She Loves Me*, and *Two Gentlemen Of Verona*. Some favorite regional engagements include *The Taming Of The Shrew* and *The Real Thing* at Alabama Shakespeare Festival, *Disney's Beauty And The Beast*, *Macbeth*, *Sophisticated Ladies*, *King Lear*, *Rosencrantz And Guildenstern Are Dead*, and *Tartuffe* at Pioneer Theatre Company in Salt Lake City, *The Winter's Tale*, *Troilus And Cressida*, and *Twelfth Night* at Utah Shakespearean Festival, *The Beauty Part* at Yale Rep., *A Little Night Music*, *Sweeney Todd*, and *Forum* for Skylight Opera Theatre in Milwaukee, and many others at Lake


George Opera Festival, Madison Rep, Sacramento Theatre Company, Virginia Stage Company, Connecticut Rep., the University of Texas, Cornell University, and Harvard University. She now lives in her native Austin, Texas, where her work is currently seen on the stages of Zachary Scott Theatre, the State Theatre, St. Edward's University and Zilker Theatre Productions. Susan holds a BFA from Carnegie-Mellon University and an MFA from the Yale School of Drama.

JOYON E. SHUCK (Production Stage Manager) is happy to return for a third season at Gateway. His credits include: Broadway: *Noises Off*, *The Graduate*. Gateway: *Oklahoma!*, *Miss Saigon*, *The King and I*, *Carousel*, *Cats*, *Fosse*. Other: *Radio City Christmas Spectacular*, New York Shakespeare Festival/Public Theatre, Actors Studio

Drama School, Cherry County Playhouse, Lycian Centre, Main Street Theatre and ArtsPower: National Touring Theatre.


KELLY TIGHE (Set Designer): Gateway credits include: *Cats* and *Jesus Christ Superstar*. Regional: *Grease*, *Titanic*, *The Who's Tommy* and *My Fair Lady* (Contra Costa Musical Theatre); *Annie*, *Kiss Me Kate* and *Joseph/Dreamcoat* (Ohio's Carousel Dinner Theater); *West Side Story* and *The Scarlet Pimpernel* (Diablo Light Opera Company); *A Christmas Carol*, *The Pavilion*, and *Picasso at the Lapin Agile* (Center Repertory Company); *The Laramie Project* and *A Midsummer Night's Dream* (PPAS/NYC). Mr. Tighe served as the resident scenic designer for Western Michigan's Cherry County Playhouse (*The Music Man* starring William Katt and Josie DeGuzman and the world premiere of *Will's Women* starring Amanda McBroom), as well as Center Rep. Television: *Sunday Night Woah!* (w/Mo Rocca) for Animal Planet, as well as several spots for Verizon, Kit Kat, Disney, and Oxygen network. Upcoming projects include: *Suds* (National Tour), and *Almost Heaven—John Denver's America* (Off-Broadway). Awards and recognitions: Northern California's "Shellie", Drama-Logue, and The San Francisco Bay Area Critic's Circle awards. Kelly resides in New York City.♦

Morgan's Beach House
Restaurant



Lunch & Dinner - Indoor/Outdoor
363 Corone Ave. Patchogue 631-758-3524
(closed Mondays)

JOE 281-0376
SHIRLEY SLEEP SHOPPE
618 Montauk Highway • Shirley, NY 11967



Complete Line of Conventional,
Waterbeds & Futons

South Shore Wines & Liquors Ltd.
Fine Wines & Spirits



Receive 10% Off Your Purchase
When You Bring in This Ad!

Call or stop in anytime to discuss
your special order needs.

440 A South Country Rd., East Patchogue, NY 11772
Ph. (631) BUY-WINE • 289-9463

LYONS FUEL OIL CO. INC.
est. 1934

24 Hr. Service Automatic Delivery

23 Station Road • Bellport, New York 11713
Phone ((631) 286-0395 • Fax ((631) 286-0396

AUTO GLASS
Bellport Glass & Mirror

- Call us BEFORE your insurance company
- INSURANCE DIRECT BILLING
- AUTO GLASS
- CUSTOM MIRRORS
- TABLE TOPS
- INSULATED GLASS
- STORE FRONTS
- RESIDENTIAL GLASS

631.286.1885
150A Main Street, Bellport, NY 11713

HTM LANDSCAPING is the official landscaper of
Gateway Playhouse
all work done by owner
Nicholas J. Harding
631-475-0636

THE BELLPORT
Steps away from the Gateway Playhouse

★★★★
New York Times Review

159 South Country Road, Bellport, New York 11713
(631) 286-7550

www.sportsplusny.com



Your Total Event and Entertainment Experience

Present this ad at Sports Plus and receive either a **Free Ride Bracelet** (good for up to 5 children)

or **10% off total base package price when booking a birthday party**

(10 Child minimum - good for up to 15 children)

Offer expires 1/28/05

110 New Moriches Road, Lake Grove, NY 631-737-2244

631-289-7742

631-698-4292



25 Route 101

E. Patchogue, NY 11772

600 Middle Country Rd.

Selden, NY 11764

Maria Rignola



Serving Investors Since 1887

Stocks • Bonds • Mutual Funds • CDs • IRAs
Options • Insurance • Annuities • Financial Planning

Richard B. Miller - Assistant Manager - Vice President - Investments

Antoinette R. Giordano, MBA - Branch Operations Supervisor
Senior Registered Financial Associate

Trusted Advice - Exceptional Service

500 W. Main St., Ste. 105, Babylon, N.Y. 11702

631-661-1600 • Toll Free 877-613-1600

richard.miller@agedwards.com

A.G. Edwards & Sons, Inc.

Member SIPC

Member New York Stock Exchange, Inc.

Official Winery of Gateway Playhouse



Duck Walk Vineyards

231 Montauk Hwy. • P.O. Box 962

Water Mill • NY • 11976

Phone: (631) 726-7555 • www.duckwalk.com

Come taste 19 different wines free

Open all year

Sometimes you're the audience.
Sometimes you're the star.



On a Celebrity Cruise, you'll be treated famously... Pampered and indulged... as you rise to the wonders of a new destination each morning. These are moments that can only be experienced on a cruise.

And it all begins with one call to Gotta Go Cruises. We're honored to help you plan your Celebrity Cruise. Think of us as your biggest fans.



Call (631) 727-7070

Or visit us at www.GottaGoCruises.com

Celebrity Cruises® X a true departure®



Ships' registry: The Bahamas and Ecuador

The BARN MUSEUM

Home of Long Island History
Special Exhibits

Second Largest Collection of Painted Tinware in the United States



THE POST-CROWELL HOUSE 1833

A Fine Collection of Period Furnishings

THURSDAYS, FRIDAYS & SATURDAYS, 1 TO 4:30PM.



Bellport-Brookhaven Historical Society

ALL LOCATED AT: 31 BELLPORT LANE, BELLPORT - 286-0888

EXCHANGE SHOP
Antiques & Decorative Accessories

Thurs., Fri., & Sat., 11AM - 5PM.

Consignments received Wednesdays,
10 A.M. to 12 Noon

(We encourage the donation of fine antiques which are fully tax deductible.)

ASSOCIATE PRIME MEAT MARKET

A Full Line of Groceries, Meats & Poultry • Deli, Vegetables • Beverages



109 Maple Ave. Patchogue, NY 11772

Phone: (631) 475-1749

Fax: (631) 447-5086

PAPA NICKS PIZZA



Gyros, Salads, Heroes, Dinners
Daily Lunch Specials

286-6400

117C-South Country Road, Bellport Village, NY

LawnTasia

Landscaping Service

Design • Patios • Ponds

ROGER MAY

(631) 286-0941 • P.O. Box 652 • Bellport, N.Y. 11713

Debra Canavan
CLASSICS

*New Things Arriving Daily
Great Jewelry and Accessories*



Casual, Career & Cocktail

53 Main Street, Sayville - 631.563.9385



MONI'S
AUTO WORKS

It's in the Details

Expert Auto Collision Repairs
All Insurance Accepted

1791 Montauk Highway
Bellport, NY 11713

286-2116

Designscapes

Award-Winning
Exterior Design Job Execution
Project Management



Experience the endless possibilities for the outdoor living room of your dreams at our 3-acre open-air showroom... Lush plantings, elegant furniture, dramatic sculpture and so much more... Or call for an in-home design consultation.

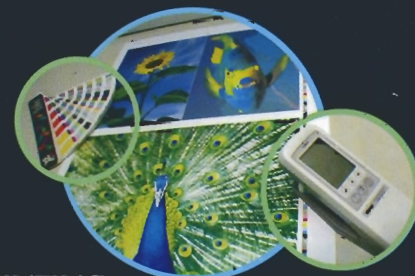
470 South Country Road, East Patchogue

631-475-0677

www.designscapesny.com

SEARLES GRAPHICS INC

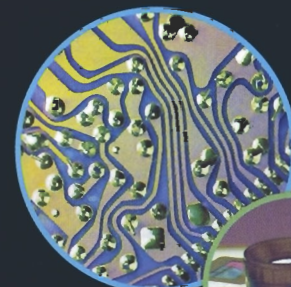
ONE
Source



PRINTING
Versatility



DESIGN
Innovation



PRE-PRESS
Precision



MARKETING
Solutions

Small Business Personal Attention
Big Business Technology

56 Old Dock Road | Yaphank NY 11980

† 631.345.2202 | f 631.345.0975

mailbox@searlesgraphics.com | www.searlesgraphics.com

CAVANAUGH'S

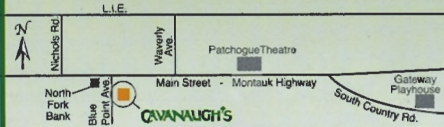
"Let's Have Fun" Est. 1986

Serving Lunch Daily Starting at 11:30
Dinner Served Every Night
Dining Room Open
Till 11 PM Every Night

DINING SPECIALS

Mondays - 2 For 1 Chicken Wings
Tuesdays - 20 Oz. Porterhouse \$12.99
Wednesdays - Irish Night
Thursdays - Prime Rib \$12.99

Suffolk County's Only Off-site
OTB



Your Neighborhood Restaurant & Pub

255 Blue Point Avenue, Blue Point
631-363-2666

Free Checking.
Free gift.
Better bank.



Open an account today.

Bellport Office
20 Station Road,
Bellport, NY 11713
631-286-3800

Patchogue Office
325 E. Main St.
Patchogue, NY 11752
631-475-2600

Michael Pollmann -
Assistant Vice President

Joseph P. Zaffuto -
Vice President



The world's local bank

us.hsbc.com 1-800-975-HSBC

Issued by HSBC Bank USA ©HSBC Bank USA 2004

GATEWAY PLAYHOUSE STAFF

Executive Producer	Ruth Allan
Producer	Paul Allan
Associate Producer	Jeff Bellante
General Manager	Gale Edwards
Casting / Artistic Director	Robin Joy Allan
Company / Production Manager	Stanley Schorr
Director	Matt Lenz
Musical Director	Andrew Graham
Choreographer	Albert Altovilla
Assistant to the Choreographer	Mary Giattino
Production Stage Manager	Jovon E. Shuck
Set Designer / Production Coordinator	Kelly Tighe
Lighting Designer	Doug Harry
Costume Designer	Susan Branch
Costume Executors	Costume World
Technical Director	John Sabo
Master Electrician	Brian Loesch
Sound Engineer	Colle Bustin
Costume Coordinator	Marianne Domy
Properties	Cliff Andrea & Heather Hughes
Scenic Charge	Brittany Fahner
Master Rigger	A.D. Garrett
Shop Foreman	Steve Knuth
Master Carpenter	Elan Bustin
Asst. Company Manager	Greg Potter
Asst. Stage Manager	Diana Giattino
Asst. Technical Director	Pete Sloane
Asst. Master Electrician	Dawn Kenseh
Wardrobe Assistants	Christie Carroll & Kelly O'Brien
Technicians	Jordan Alexander, Morgan Jacobellis, Julia Lapp, Joe Loesch, Caleb McCuller
Interns	Ricky Haug, Justin Hoffman, Shannon O'Connor, Tricia Russell, Tom Russo
Director of Group Sales	Annmarie Allan
Publicist	Linda Unger
Administrative Assistant	Enrico Spada
Associate Artistic Director	David Ruttura
Box Office Manager	Laurie Parr
House Managers	Joanne Famiglietti, Pam Stewart
Box Office Staff	Erika Benner, Nadine Hazard, Jessica Harrison, Gregg Monteith, Brian Strumwasser
Hospitality Manager	Megan Williams
Concessions Supervisor	Rita Wehmer
House Staff	Paul Bisagni, Jason Blake, Lauren Cox, Brendan Dooling, Michael Gandolfo, Jose Moreno, Rafael Ortiz, Marie Rachek, Philip Sheridan, Ricky Trombina
Maintenance	Don Harrison
Cleaning Contractor	Fiori Enterprises Inc.
Music Contractor	Jeff Hoffman
General Counsel	Ann L. Nowak & Associates
Production Photographer	Jeff Bellante
Sound Consultant	Dominic Sack
Trucking Supervisor / Rentals Tech. Director	John Schroeder
Grounds Maintenance	HTM Landscaping Company

Gateway Playhouse would like to thank our volunteer staff for their dedication and support.
It is much appreciated.

Marie Rachek - Head Usher

Ushers - Al Aberg, Missy Archue, Carmela Aiosa, Olga Belz, Anne Burke, Betty Entress, Linda Good, Marian Harrison, Mary Lanier, Joan McGroarty, Helen Mendelsohn, Jane Meyers, Sue Nemet, Joanne Nunan, Peter Pernice, Sylvia Randolph, Dolores Reeves, Sandy Riefel, Terry Seng, Michael Semie, Bella Triola, Carol Weinstein

IF YOU WOULD LIKE TO JOIN OUR VOLUNTEER STAFF CALL 286-0555

ACTING AND MUSICAL THEATRE TRAINING

all levels of acting for all ages thru adult



GATEWAY ACTING SCHOOL

Now Enrolling

LEARN FROM THE PROFESSIONALS!

286-9014



CELEBRATING

55

YEARS OF SHOW BUSINESS SAVVY

July 27 -
August 13



Final week at
Patchogue Theatre

42ND STREET

September
7 - 24

Sugar

...the *Some Like It*
Hot Musical



August 17 -
September 3
at Patchogue Theatre

All Tickets On Sale Now!

631-286-1133 1-888-4TIXNOW

American Airlines
Official Airline for the Gateway Playhouse

South Country Rd., Bellport, New York
www.gatewayplayhouse.com

Don't be "...Too Proud To Beg" for Tickets!
RETURN TO MOTOWNS HEYDAY!
with **The Legendary Lead Singers of**



the TEMPTATIONS

JULY 15 at 8 PM
JULY 16 at 4 PM & 8 PM

Tickets:
\$38.00 and \$32.00
In Bellport

"My Girl", "Just My Imagination",
"Get Ready", "Can't Get Next To
You", "The Way You Do The Things
You Do", "Papa was a Rollin' Stone"



CHILDREN'S THEATRE

Live Musical Shows! All Seats \$9.00

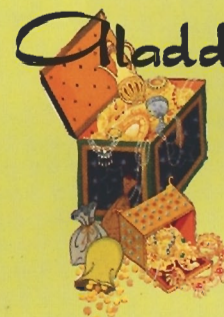
Exposing young people to live theater early on promotes arts appreciation,
inspires imaginative thinking, and propels our dreams for the future...

PUSS 'N BOOTS



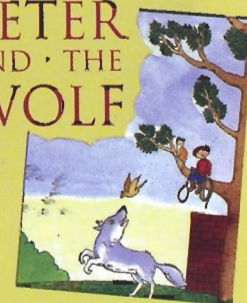
Saturday, July 9
Taubenslag Productions
Patchogue 10:30 am & 1pm

Aladdin

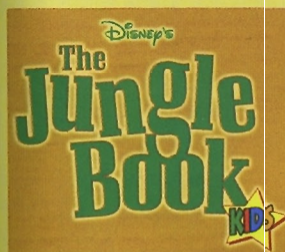


Friday, July 15
Yates Musical Theatre
Patchogue 10:30 am & 1pm

PETER AND THE WOLF



Friday, July 22
Hudson Vagabond Puppets
Patchogue 10:30 am & 1pm



at Bellport
Friday, August 5th (10:30 am),
Saturday, August 6th and
Friday, August 12th
(10:30 am & 1pm)
Saturday, August 13th (10:30 am)
Gateway Playhouse



Saturday, August 20
Hudson Vagabond Puppets
Patchogue 10:30 am & 1pm

SNOW WHITE



Friday, August 26
Yates Musical Theatre
Patchogue 10:30 am & 1pm

(631) 286-1133 1-888-4TIXNOW

WE NOW HAVE RESERVED SEATING FOR THE CHILDREN'S THEATRE!

TICKETS ON SALE NOW

Sorry, Children ages 2 and older only - No Infants Please.
You must purchase a ticket for every child "out of the womb."
Shows subject to change without notice.

