

A

CHRISTMAS

Story
The Musical

THE *Gateway*
PERFORMING ARTS CENTER OF SUFFOLK COUNTY



Our expert oncologists can now target cancer in ways that used to be impossible.

THE VARIAN® EDGE™ RADIOSURGERY SYSTEM IS HERE. The newest weapon in the fight against cancer is now in the hands of the internationally renowned radiosurgery experts at Stony Brook University Cancer Center. So precise and noninvasive, it offers the most advanced monitoring capabilities and gives us the power to find and destroy tumors hiding in the most difficult to reach places — without harming any of the vital tissue and nerves that surround them. So now, we can remove tumors while protecting memories you've made and the ones yet to come. This isn't just medicine, this is Stony Brook Medicine.

For more ideas, visit cancer.stonybrookmedicine.edu

Copyright © 2014, Varian Medical Systems, Inc. All rights reserved.
Stony Brook University/SUNY is an affirmative action, equal opportunity educator and employer. 17100637H



**Stony Brook
Cancer Center**

The best ideas in medicine.

SHOPPING FOR CAR INSURANCE? CALL ME FIRST.

AVERAGE
ANNUAL
SAVINGS:

\$446*

DRIVERS WHO SWITCHED FROM:

Geico	saved \$ 440* on average with Allstate
Progressive	saved \$ 395* on average with Allstate
State Farm	saved \$ 431* on average with Allstate

Put your policy to the test.

Drivers who switched to Allstate saved an average of \$446* a year. So when you're shopping for car insurance, call me first. You could be surprised by how much you'll save.



John M. Cuenin

631-758-7225

629 Route 112, Ste. 10

Patchogue

jc@allstate.com



Allstate[®]

You're in good hands.

Auto Home Life Retirement

Annual savings based on information reported nationally by new Allstate auto customers for policies written in 2014. Actual savings will vary. Allstate Fire and Casualty Insurance Co., Northbrook, IL © 2015 Allstate Insurance Co.



TheGateway.org | (631) 286-0555, ext 5000

Congratulations



...to our students featured in



Allie DeMatteo

Albert Peterson

Megan Jackowski

Marty Timlin

Faye Licciardi

Alexandra Vlachos

Lainey Merz

Ray Zerner

Aidan Passaro

You Can Be
On Stage Too!

CLASSES IN...

**ACTING
TECHNIQUE**

**MUSICAL
THEATRE**

IMPROV

**MUSICAL
PRODUCTION**

**PRIVATE
COACHING
ONE-ON-ONE**

**SCHOLARSHIPS
AVAILABLE**

**SPECIAL NEEDS
CLASSES FOR
TEENS & ADULTS**

OPEN HOUSE

Meet the Staff
Learn About Classes
Tour The Campus

**Sun, Jan 14
12-4pm**

PERA BELL

Food Bar

PATCHOGUE ★ RIVERHEAD



The Restaurant for Every Occasion

We take pride in being a neighborhood style restaurant with globally inspired food in a casual yet refined setting.

Weekly Chalkboard Specials • Happy Hour Specials
Seasonal Specialty Cocktail Menu • Farm to Table Menu
Live Music • Outdoor Sidewalk Cafe



PeraBell Food Bar Riverhead

Brick Oven Pizza • Large Outside Deck & Dining Area

PeraBell Patchogue
69 E Main Street • 631.447.7766

PeraBell Riverhead
65 E Main Street • 631.740.9494

Visit Us Online at PeraBellFoodBar.com

Suffolk Federal is a Proud Sponsor of the Gateway

NOW SHOWING at a Branch Near You!

Great Rates

AUTO LOANS



HOME EQUITY



CREDIT CARDS



PERSONAL LOANS



SuffolkFederal

Better Banking For Long Island

www.suffolkfcu.org

(631) 213-6729



Commack • Eastport • Islandia • Medford • Miller Place
Riverhead • Sayville (2016) • Southampton • West Babylon



Presents

A CHRISTMAS STORY THE MUSICAL

Book By

JOSEPH ROBINETTE

Music and Lyrics By

BENJ PASEK and JUSTIN PAUL

Based upon the Motion Picture *A Christmas Story* distributed by Warner Bros,

Written by Jean Shepherd, Leigh Brown and Bob Clark

Also based upon *In God We Trust: All Others Pay Cash* written by Jean Shepherd

Featuring

JAMES BERNARD

**BURKE BRICKNER HOLLY ANN BUTLER JAROD HIRSCH BENJAMIN HOWES
AIDAN PASSARO MARTY TIMLIN JENNIFER HOPE WILLS RAY ZERNER**

With

**TIGER BROWN KYLA CARTER ALEC COHEN ALLIE DEMATTEO CARVER DUNCAN
MEGAN JACKOWSKI JEFF KUHR FAYE LICCIARDI BRIAN SHIMASAKI LIEBSON
MEGAN LIONE LAINEY MERZ ALEX HAYDEN MILLER ALISON MOROONEY
ELYSE NIEDEREE ALBERT PETERSON AMANDA SWICKLE SYDNEY TROXLER
ALEXANDRA VLACHOS CHRISTOPHER BRIAN WILLIAMS**

And

JAMES LLOYD REYNOLDS

as Jean Shepherd

Executive Artistic Director

PAUL ALLAN

Production Manager

BRIAN LOESCH

Director of Business Operations

JEFF BELLANTE

Casting Director

MICHAEL BAKER

Production Stage Manager

JOHN "JP" POLLARD

Company Manager

AUBREY KYLER

Director of Development

SCOT ALLAN

Scenic Designer

WALT SPANGLER

Costume Designer

ELIZABETH HOPE CLANCY

Lighting Designer

JOSE SANTIAGO

Musical Director

HOSUN MOON

Scenic Coordinator

BIRTANY LOESCH

Choreographer

MARA NEWBERY GREER

Costume Coordinator

MEGAN REED

Director

JOE MINUTILLO

Produced by special arrangement with DRAMATIC PUBLISHING, Woodstock, Illinois.

Produced with permission of Warner Bros. Theatre Ventures and Dalfie Entertainment.

Originally Produced on Broadway by Gerald Goehring, Roy Miller, Michael F. Mitri, Pat Flicker Addiss, Peter Billingsley, Timothy Laczynski, Mariano Tolentino, Jr., Louise Beard, Michael Filerman, Scott Hart, Allison Eckert, Bob Bartner, Michael Jenkins, Angela Milonas and Bradford W. Smith.



Cast Of Characters

JEAN SHEPHERD	James Lloyd Reynolds*
RALPHIE.....	James Bernard*
MOTHER	Jennifer Hope Wills*
RANDY.....	Jarod Hirsch
THE OLD MAN	Benjamin Howes*
SCHWARTZ.....	Ray Zerner
FLICK	Aidan Passaro*
SCUT FARCUS	Burke Brickner
GROVER DILL.....	Marty Timlin
OTHER CHILDREN	Kyla Carter, Allie DeMatteo, Megan Jackowski Faye Licciardi, Lainey Merz, Albert Peterson Amanda Swickle, Alexandra Vlachos
MISS SHIELDS	Holly Ann Butler*
MRS. SHWARTZ.....	Tiger Brown
FLICK’S MOTHER.....	Megan Lione
SANTA CLAUS	Christopher Brian Williams*
WAITER.....	Brian Shimasaki Liebson*
NEIGHBORS, SHOPPERS, PARENTS TOWNSPEOPLE, ELVES, & OTHERS	Tiger Brown, Alec Cohen* Carver Duncan, Jeff Kuhr*, Brian Shimasaki Liebson*, Megan Lione Alex Hayden Miller*, Alison Morooney, Elyse Niederee* Sydney Troxler, Christopher Brian Williams*
Production Stage Manager	John “JP” Pollard*
Dance Captain.....	Elyse Niederee*
Fight Captain.....	Jeff Kuhr*

Understudies

JEAN SHEPHERD	Christopher Brian Williams*
RALPHIE.....	Aidan Passaro*
MOTHER	Megan Lione
THE OLD MAN	Michael Edward Baker*
MISS SHIELDS	Sydney Troxler
FLICK.....	Albert Peterson

The Orchestra

MUSIC DIRECTOR/KEYS 1.....	Hosun Moon
KEYS 2	Michael Hopewell
DRUMS/PERCUSSION.....	Pete DeSalvo
REEDS.....	Michael Kendrot
TRUMPET.....	John Brierly
TROMBONE.....	Tomas Bradbard
BASS.....	Frank Canino

AVINO'S



ITALIAN TABLE



NEIGHBORHOOD ITALIAN REDEFINED

PASTA | SEAFOOD | STEAK

OPEN DAILY FOR LUNCH & DINNER
SUNDAY BRUNCH

631-803-6416

108 SOUTH COUNTRY ROAD, BELLPORT VILLAGE

AVINOSITALIANTABLE.COM



LOBSTERFEST, EVERY MONDAY
SERVING BELLPORT SINCE 1985

SCENES & MUSICAL NUMBERS

ACT 1

- Overture..... Orchestra
- Prologue: A street corner outside radio station WOR, New York City/the radio studio desk—Christmas Eve, several years ago**
- Scene 1: The Parker Family House & Higbee’s Department Store—Dec. 1, 1940**
“It All Comes Down to Christmas” Ralphie, The Parkers, Ensemble
“Red Ryder Carbine Action BB Gun” Ralphie and Jean
“It All Comes Down to Christmas” (Reprise)..... Ralphie and Company
- Scene 2: The Parker Family House—The Next Day**
“The Genius on Cleveland Street” The Old Man, Mother
- Scene 3: A Path Leading to School—Soon Afterward**
“When You’re a Wimp” Kids
- Scene 4: The Classroom—A Few Minutes Later**
“Ralphie to the Rescue” Ralphie, Miss Shields, The Old Man
Mother, Randy, Ensemble
- Scene 5: The Parker Family House—A Week Later**
“What a Mother Does” Mother
“A Major Award” The Old Man, Mother, and Neighbors
- Scene 6: The Parker Family House—Early Evening of December 13, 1940**
- Scene 7: On the Road—Immediately Following**
“Parker Family Singalong”The Parkers
- Scene 8: The Parker Family House—Late That Night**
“Act I Finale”Ralphie and Ensemble

ACT II

- Entr’Acte..... Orchestra
- Scene 1: The Schoolyard and the Classroom**
“Sticky Situation”Ralphie, Flick, Schwartz, Kids, Miss Shields, Nurse
Flick’s Mom, Fireman, Policeman, Doctor
- Scene 2: Fantasy 1930’s Speakeasy**
“You’ll Shoot Your Eye Out” Miss Shields and Kids
- Scene 3: A Path From School—Immediately Following**
- Scene 4: The Parker Family House—a Few Minutes Later**
“Just Like That” Mother
- Scene 5: Santa’s Station at Higbee’s—Christmas Eve**
“At Higbee’s”Elves
“Up on Santa’s Lap”Santa, Elves, Ralphie, Randy, Kids
- Scene 6: The Parker Family House—Christmas Eve**
“Before the Old Man Comes Home”The Parkers
- Scene 7: The Boys’ Bedroom**
“Somewhere Hovering Over Indiana”Ralphie, Randy, Kids
- Scene 8: The Parker Family House, a Chinese Restaurant, and the Town
— Christmas Day**
“Ralphie to the Rescue” (Reprise)Ralphie and Ensemble
“A Christmas Story” The Parkers and Full Company



PAINTERS'
Restaurant

Join us for
BRUNCH LUNCH DINNER

.....
Serving Brunch Saturday & Sunday
11am - 4pm

.....
**416 SOUTH COUNTRY ROAD
BROOKHAVEN, NY 11719**

2 MILES EAST OF GATEWAY PLAYHOUSE
make your reservations

631-803-8593



NEW YEAR'S RESOLUTIONS

1. EAT LESS *onion rings*
2. TAKE MORE NAPS
3. SHAVE MORE CAREFULLY
4. IMPLEMENT A MEASURABLE MARKETING STRATEGY FOCUSED ON REACHING MORE CLIENTS
5. USE MORE *colorful profanity*
6. CHANGE SOCKS MORE OFTEN

If you need help with **No. 4** (maybe No. 5), please get in touch with us.



www.searlesgraphics.com
631.400.3086



PROUDLY SUPPORT

The Gateway



Don't forget Panera® Catering for any and all gatherings!
Call or place your order online at paneracatering.com



TASTE THE CHANGE.

THE CHANGE IS REAL. WE HAVE THE BOLD, NEW FLAVORS TO PROVE IT.



CONNECT WITH US

Please submit your requests for donations, fundraising, sponsorships, and youth connection by visiting dohertyinc.com/community-connection



Real Possibilities is a trademark of AARP.

DISCOVER REAL POSSIBILITIES ACROSS LONG ISLAND.

From Mineola to Montauk, AARP is working on issues important to you and your family so you can get the most out of life. It's why we're connecting with you at fun, free events like movie screenings, financial seminars and fraud prevention workshops. You can even connect with others at discounted theater performances and at select sporting events.

Learn more and get to know us by calling **866-227-7442** or visit aarp.org/longisland

 /aarpny
 @aarpny

AARP® Real Possibilities
Long Island



SJC LONG ISLAND

Where Tomorrow's Leaders Take Center Stage

At St. Joseph's College, we combine our long-standing tradition of value-centered academic excellence with innovative programs and a rich, vibrant campus life – all at one of Long Island's most affordable colleges. No wonder *Washington Monthly* ranks us #9 in the Northeast as a “Best Bang for the Buck” college.



One of the highest graduation rates of any public or private institution on Long Island



Home to the **Clare Rose Playhouse** for theater courses and stage productions



Small, engaging classes with a **15:1 student to faculty ratio**



Numerous clubs to foster your creativity including dance, drama, show choir and the SJC Sharps, a female a capella group



Ready. Set. Joe's

LONG ISLAND • BROOKLYN • ONLINE
sjcny.edu/long-island • 631.687.5100

Who's Who



JAMES BERNARD (*Ralphie*) is a proud Equity member, and is thrilled to be a part of

The Gateway Production of *A Christmas Story*. Credits include: National Tour of *The Sound of Music* (Kurt Von Trapp), Queens Theatre production of *To Kill a Mockingbird* (Dill) and Off-Broadway production of *And a Child Shall Lead* (Eric). He lives in Manhattan with his family and loves to act, sing, write songs and play drums. He thanks his super supportive parents, brother Daniel, Nana/Grandpa, everyone at Gateway, Barry Kolker, Mitch Raftery, Mimi Stewart, and Cielito Pareja.



BURKE BRICKNER (*Scut Farcus*) moved to NYC in 2016 to pursue his dreams of being in theater, dance, TV and film. He is very excited to be in Gateway's holiday production!

This summer he debuted as Michael in Cape Cod's production of *Billy Elliot*. He trains at American Ballet Theater, Broadway Dance Center and is a member of Thommie's "Tap Crew". Burke originally trained in Omaha, NE with eight years of competitive dance, performing all over the country. He is represented by The Carson Kolker Agency & Connecting Talent Company.



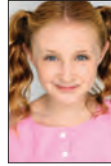
TIGER BROWN (*Ensemble/ Mrs. Schwartz*) is thrilled to be spreading holiday cheer this season in The Gateway's production of *A Christmas Story!* Recent Credits: *Mamma Mia*, *Newsies*, *Shrek* (Tweedle Dee), and *54 The Musical*. Nat'l Tours: *Elf* (Waitress/Ens), *Beauty and the Beast* (Green Silly/Enchanted Object). Proud NYU Tisch grad. Special

thanks to GBM, the Gateway team, and my incredible family and friends. You are my world. Thanks for your quirks and laughter. Happy Holidays to all! Follow @tigerb, and check in at www.tigerbrownny.com for updates!



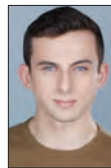
HOLLY ANN BUTLER (*Miss Shields*) is thrilled to return to the Gateway Playhouse after her last performance here as Rizzo in *Grease*. Broadway/ Off-Broadway: *On the Town*

(Flossie, Claire U/S), *How to Succeed... (Hedy/ Smitty u/s)*, *Grease* (Rizzo u/s), *Happiness, Anyone Can Whistle* (Encores!). 1st national tours: *Evita* (Eva u/s), *Shrek the Musical* (Wicked Witch, Fiona u/s), *Jersey Boys* (Lorraine). Regional: *A Chorus Line* (Sheila, MUNY), *Nice Work...* (Jeannie Muldoon, Sacramento Music Circus), *Miracle Worker* (Kate, Queens Theatre), *Leading Ladies* (Meg, ACCC), *Gotta Dance* (Diane, pre-Broadway), *Holiday Inn* (Lila Dixon, MUNY), *Thoroughly Modern Millie* (Millie, Drury Lane, Jeff Award Nomination). Film/TV: "Looking for Trouble," "Seaquest2032," "Figure It Out." "Thanks to Nani/Saperstein, my family, and Steven."



KYLA CARTER (*Youth Ensemble*) is an 11 year old, SAG/AFTRA/EQUITY actress and is thrilled to be making her Gateway debut! She was recently on the First National

Broadway Tour of *The Sound of Music* as Gretl/Marta Von Trapp (original cast). Regional: *Gypsy* (Baby June), NYC: *Number the Stars* (Kirstie), *Annie* (Molly). TV credits: *Nickelodeon*, "Wallykazam!" (Hattie the Witch), *HBO*, "The Leftovers" (Young Nora). Warm thanks and sincere gratitude to the entire Christmas Story creative team, my amazing coaches, and my loving family! www.kylacarter.com Twitter/FB/ Instagram @KylaDCarter.



ALEC COHEN (*Ensemble*) is so stoked to be spending the Holidays at The Gateway Playhouse! Past Credits include two seasons with Maine State Music Theatre and two seasons

with Music Theatre Wichita, (Davey in *Newsies*, Caleb in *Seven Brides...*). BFA: CCM.

INTRODUCING LONG ISLAND'S FIRST TeliStat™ Restorative Care Unit

Brookhaven Health Care Facility is pleased to introduce a state-of-the-art **CARDIAC MONITORING UNIT**. The concept and associated proprietary technology was developed by Dr. Anthony Bacchi and is designed to treat higher acuity patients more effectively in a nursing home setting.

The unit is staffed with professionally trained nurses who are certified in advanced life support and have a 6-to-1 ratio with their patients. The unit's comprehensive real-time observation includes monitoring of:

- Blood pressure
- Pulse & pulse oximetry
- ST elevation/depression
- Systemic vascular resistance
- Stroke volume
- Cardiac rhythm
- Cardiac output
- Cardiac index

**NOW ACCEPTING
NEW PATIENTS.
CALL FOR A
TOUR TODAY.**



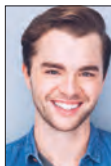
BROOKHAVEN
HEALTH CARE FACILITY

Gazzola Drive • East Patchogue • (631) 447-8800 • BrookhavenHealthCareFacility.com

Huge thanks to Henderson Hogan, Mara, and the whole Cohen crew. For Pops, always.



ALLIE DEMATTEO (*Youth Ensemble*) is so excited to be back at The Patchogue Theater. She started acting a little over a year ago in *Alice in Wonderland Jr.* Since then, she has appeared in *Madagascar Jr.* (Private) and *Lion King Jr.* (Young Nala). Thanks to Michael Baker, Rachel Colson, Bethany Dellapolla, Matt Karris, and so many more people for all their support. Special thanks to Joe Minutillo, whom Allie is very excited to do another production with. A final thank you goes to this creative team for giving her the opportunity to take part in such an amazing production.



CARVER DUNCAN (*Ensemble*) is thrilled to be making his Gateway Playhouse debut in *A Christmas Story!* National Tour: *Seven Brides for Seven Brothers*. Selected Regional: *West Side*

Who's Who

Story (BWW Award); *Gypsy*; *Legally Blonde*; *Chicago*. International vocalist with Viking Ocean Cruises. Proud graduate of NYU Tisch, New Studio on Broadway. Thanks to everyone at Gateway, my agents, my family and BHR. For Stephanie Maloney; all I really needed was you! www.carverduncan.com



JAROD HIRSCH (*Randy*) is thrilled to be joining *A Christmas Story, The Musical* cast! Recently Lefou in *Beauty in the Beast Jr!* Hugs to my teachers at Dance Molinari, The

Stage Door, Magaziner Vocal School, Amy Murphy Studio, Kevin Metzger-Tsimons, and Eric Forte Leach. A special thanks to Karen Lampiasi, and Barry Kolker. Love to all my family and friends for supporting me on this journey.

THE RAT PACK IS BACK!

...PLUS A SPECIAL
New Year's Eve
PARTY & PERFORMANCE!

DECEMBER 30-
JANUARY 1
AT PATCHOGUE THEATRE

TheGateway.org | (631) 286-1133

Listen to Lawrence!

*...and learn how to plan
the RIGHT way.*

FREE SEMINAR!

- Learn how to protect your assets from the high costs of Long Term Care
- Learn how to protect the money you leave to your children from their divorce
- Learn how to protect your children's inheritance from creditors, taxes and their own poor judgment

This informative program is FREE, but reservations are required.

Call 631-234-3030 or go online at: www.davidowlaw.com to find an upcoming seminar in your area!



Lawrence Eric Davidow
Senior and Managing Partner
**DAVIDOW, DAVIDOW
SIEGEL & STERN, LLP**
LONG ISLAND'S ELDER LAW,
SPECIAL NEEDS
AND ESTATE PLANNING FIRM



DAVIDOW, DAVIDOW, SIEGEL & STERN, LLP

Original Firm Founded 1913

Long Island's Elder Law, Special Needs and Estate Planning Firm

1050 Old Nichols Road - Suite 100, Islandia, New York 11749 | Tel. (631)234-3030

www.davidowlaw.com

Additional office locations: Garden City | Mattituck

**BENJAMIN HOWES** (*Old Man*)

Originally from Australia, Benjamin has performed on Broadway (*Scandalous*, *Mary Poppins* & [title of show]), Off-Broadway (most recently in *The*

View Upstairs) and in National Tours (*Mary Poppins*, *Shrek*). Regional credits include A.R.T., The Old Globe, Goodspeed, Pittsburgh Public and Asolo Rep, among many others. Film: "Miles", "Easter Mysteries". Television credits: "Law and Order: Criminal Intent", "Flight of the Conchords", "One Life To Live". Full scoop at www.benjaminhowes.com; instagram @benjthestar



MEGAN JACKOWSKI (*Youth Ensemble*) is thrilled and excited to be returning to The Gateway Playhouse in *A Christmas Story the Musical*. Her previous performances: *Billy Elliot*

(Angela Robson), *Pinnocchio* (Ensemble), *The Wizard of Oz* (Munchkin) and *The Gateway Haunted Playhouse* (Ensemble). She is an Intelligent, dedicated, loving, and driven 13 year-old from North Babylon, NY. While continuing to excel in dance for 11 years now, Megan has also maintained Honor Society in school and has displayed a great ability to balance her academics and her PASSION for Dance and Acting. She has everlasting Gratitude and Love to Mom, Dad, Family, Friends and teachers for their guidance, love and support. A Special Thank you to Stage Door School of Dance and The Gateway Playhouse for their continued enthusiastic support and encouragement to work towards fulfilling her dream!



JEFF KUHR (*Ensemble*) is excited to make his Gateway Playhouse debut! He was last seen in the Broadway company of *Kinky Boots* after touring with the original 1st national

company. Attended Point Park University with a B.A. in Dance. Credits: Pittsburgh CLO, Music Circus, Cape Playhouse, Maltz Jupiter, Riverside Theater, Pioneer Theater, North Shore, Alabama Shakespeare. Thank you to

Mara, Eddie at Take3Talent, and my parents for making the trip up! @jeffkuhr

**FAYE LICCIARDI** (*Youth*

Ensemble) is a 12 year old 7th grader at Bellport Middle School. Faye has participated in two middle School plays and is a chorus member. *A Christmas*

Story the Musical is Faye's second main stage performance at Patchogue Theater including *Billy Elliot* in 2015. Faye is a student at Gateway's Children's Conservatory and has performed in *Pinocchio Jr*, *Lion King Jr*, and a 2nd year haunt volunteer. Faye has been dancing at Stage Door School of Dance for 10 years, and a proud company member for 4 years. Faye is grateful for these opportunities and would like to thank her family, friends, and teachers.

**BRIAN SHIMASAKI LIEBSON**

(*Ensemble/Waiter*) is thrilled to return to The Gateway after *Anything Goes* in 2016. National Tour: Rodgers + Hammerstein's

Cinderella. Regional: *Anything Goes* (Gateway), *Anything Goes* (Ogunquit), *Newsies* (MSMT), *Grease* (MSMT), *Guys and Dolls* (MSMT), *Crazy for You* (Reagle), *Mary Poppins* (Wheelock), *The Donkey Show* (ART). Proud BS in Robotic Engineering. Proud member of AEA. Thank you Michael and Rachel, Luedtke, Mom, and all involved. Insta: @LiebsonBounds



MEGAN LIONE (*Ensemble, u/s Mother*) has a full heart making her debut where it all began at Gateway Playhouse! Credits include: *Ragtime* (Ensemble, Ogunquit Playhouse), *A Chorus*

Line (Maggie), *Cats* (Jellylorum), *The Rocky Horror Show* (Magenta), *21* (City Center, NY Premiere), *The Most Happy Fella*, and *Carousel*. Proud Wagner College grad! Thank you to RJ, my family, and Sheri!

THANK YOU BELLPORT MERCHANTS FOR SUPPORTING



**Papa Nick's
Pizza**
Since 1987

www.papanickspizzeria.com
Home of the Crispy Crust • Daily Specials

631-286-6400
117C South Country Road | Bellport Village

**Swan
Realty Corp.**

*Celebrating over 33 years
of business, since 1984*

*An Established
Tradition of Service*

322 S. Country Rd., East Patchogue
(631) 289-5550 | www.swanproperties.com

KAREN E. GUNKEL
ATTORNEY AT LAW

Areas of representation include Real Estate, Wills,
Estates, Landlord Tenant & Corporate matters.

9 Station Court | Bellport, NY 11713
P: 631.286.3500 | E: karen@gunkellaw.com

playcrafters
THEATRE COMPANY

Winter 2018 Other Desert Cities
Spring 2018 Moon Over Buffalo

www.facebook.com/BellportPlaycrafters
(631) 748-7863

DON'T LET PAIN Interfere With Your Life!

**DR. JOSEPH R.
MERCKLING**

Providing Relief for:
Neck and Back Pain | Headaches | TMJ Pain | Sciatica | Scoliosis
Postural Problems and Pregnancy Related Back Pain

We use Rock Tape Kinesio-Tape

MERCKLING FAMILY CHIROPRACTIC, P.C.
16 Station Road, Suite 2, Bellport Village 631-286-2300 www.mercklingdc.com

Who's Who



LAINY MERZ (*Youth Ensemble*) is thrilled to be back on Gateway Theater's main stage production after being a part of the youth ensemble in *Billy Elliot*. Special thanks to her

new friends at Gateway and all her special teachers at Stage Door School of Dance. Thank you to Mary Giattino and Stephanie Vertichio for their continued love and support for the last 8 years, and being a big part of making her Dreams Come True. XOXO, to all her family, friends, and her biggest fan Susan Ryan who has never missed a show!



ALEX HAYDEN MILLER (*Ensemble*) Gateway debut! Oklahoma City native and graduate of the University of Michigan. Favorite credits include: *Newsies* (Morris

Delancey) *The Munny*, *42nd Street* (Andy) *The Lexington Theatre Company*, *The Tempest* (Ferdinand) *University of Michigan*. Proud AEA member. Thanks to Mom, Dad, Elle, Mallory, DGRW and especially to everyone

at Gateway for this wonderful opportunity. Thunder up and Go Blue!



ALISON MOROONEY

(*Ensemble*) is so excited to join the Gateway family! Favorite performing credits include *American Idiot International Tour* (Dance Captain, Swing),

Nice Work if You Can Get It (Dance Captain, Swing), and *Ever After* (Swing). Directing and choreography credits: *Bells Are Ringing* (CLOC, director), *Sweet Charity* (Penn State University, choreographer), and *I Love You Because* (Penn State University, director/choreographer). Much love to Michael and my amazing family!

THE Gateway INTERNATIONAL ARTS CENTER OF GATEWAY THEATRE
PATCHOGUE THEATRE
FOR THE PERFORMING ARTS
present
STOMP™
THE INTERNATIONAL SENSATION

JANUARY 5 & 6 AT PATCHOGUE THEATRE
MAKES A GREAT HOLIDAY GIFT!

A PUB OF THE OLD STYLE



Pub Fare That Will Make Your Tongue Smile

Relax Before or After The Show — Full Menu & Desserts

Kitchen Open 11 AM to 11 PM (Mon. thru Sat.) — Bar 'til 1 AM

70 North Ocean Avenue • Patchogue • (631) 289-1900

153 River Ave. Patchogue, NY 11772

**ad
apparel** *est. 1984*

From Art to Finish

**SCREEN PRINTING
EMBROIDERY
PROMOTIONAL ITEMS**

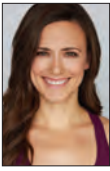
Quality & Service for Over 30 Years

631-289-9800

www.adapparel.com

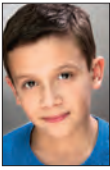


Se Habla Español



ELYSE NIEDEREE (*Ensemble/Dance Captain*) is overjoyed to be spreading holiday cheer in her Gateway Playhouse debut with this wonderful cast, crew, and team of *A Christmas Story*.

Favorite credits include... *Legally Blonde*, *Beauty and the Beast* and *On The Town* (Sacramento Music Circus) *A Funny Thing... Forum* (Geva Theater), *West Side Story* (Finger Lakes Musical Theatre Festival), *Chicago* (North Shore Music Theatre) *Elf the Musical* (National Tour). Many thanks to Mara, Joe, Michael and Paul and the whole Gateway family; wonderful teachers, inspiring friends, Alex, my incredible parents and my two brothers for their constant encouragement. Happy Holidays!



AIDAN PASSARO (*Flick, u/s Ralphie*) is excited to be back at The Gateway! Broadway and National Tours: *Kinky Boots* (Young Charlie) Regional: *Billy Elliot* (Small Boy), *Priscilla, Queen*

of the Desert (Benji), *Miracle on 34th Street* (Tommy Jr), *The Lion King Experience* (Young Simba), *On the Town* (Ensemble). Thanks to Michael Baker, Rachel Colson, Dan Ragone, Kathryn Tollan, and Abrams Artists. Love to his parents, brothers, and family. Happy Holidays!



ALBERT JACK PETERSON (*Youth Ensemble, u/s Flick*) is 10 years old. He is thrilled to be a part of *A Christmas Story!* You may have recently seen him as a newsboy in *Gypsy* at The

Engeman Theater. Albert has also appeared in several Gateway productions. Roles include Michael in *Peter Pan Jr.*, the coroner in *The Wizard of Oz* and Skipper in *Madagascar Jr.* Special thanks to Joe Minutillo, Michael Baker and all of his Gateway friends!



JAMES LLOYD REYNOLDS (*Jean Shepherd/Narrator*) is happy to return to Gateway where he appeared as Julian Marsh in *42nd Street*. He was recently seen as Herbie in *Gypsy*

opposite Julia Murney at the Cape Playhouse and a concert reading of *Oedipus For Kids* at 54 Below in NYC. James has starred in three shows at Goodspeed musicals including Georges in *La Cage*, Beauregard in *Mame*, and Julian Marsh in *42nd Street*. Other favorites include King Arthur in *Spamalot*, Sidney Bruhl in *Deathtrap*, Cal in *Mothers and Sons* opposite Michael Learned at Philadelphia Theatre Company, and Atticus Finch in *To Kill a Mockingbird* at Weston Playhouse. TV credits include *Blacklist*, *Odd Mom Out*, *Limitless*, *Braindead*, *Law and Order SVU*. He is a graduate of the Yale School of Drama.



AMANDA SWICKLE (*Youth Ensemble*) is thrilled to spend her holidays performing in *A Christmas Story* with this wonderful cast. This is her first production with Gateway and

at the Patchogue Theatre. Recent credits: Broadway National Tour / *Annie* (Annie & Pepper), Engeman Theatre/*Gypsy* (Baby Louise), NY Musical Festival / *Eco* (Young Eco), *Tink! A New Musical* (Suzy), *Little Mermaid* (Flounder) Engeman. Carnegie Hall's American Protégé International Vocal Competition: 1st place. Grateful for this amazing opportunity, her manager, agent, amazing coaches & loving family and friends for their support. For more information follow her on www.amandaswickle.com, Instagram @amanda_swickle and Twitter.



MARTY TIMLIN (*Grover Dill*) is thrilled to perform in *A Christmas Story* and is so thankful to the entire crew at Gateway for the opportunity. Marty is 8 years old from

Yaphank NY. Marty has a passion for acting and has performed in *Frosty's First Adventure* and Disney's *The Jungle Book Kids* through Ballet Long Island. Marty is grateful to his family and friends for supporting him as he pursues his dreams.

COLLATERAL LOANS & EXCHANGES
 ESTATE & CONTEMPORARY GOLD JEWELRY
WRITTEN APPRAISALS · GIA CERTIFIED DIAMOND GRADER
 EXPERT JEWELRY & WATCH REPAIRS
MUSIC INSTRUMENTS & RENTALS

Wm. J. O'Neill

Advancing your financial lifestyle needs with
 compassion, confidence & trust for 60 years



ONE EAST MAIN ST., PATCHOGUE, NY 11772
631.289.9899 · WMJONEILLS.COM

THE Gateway
 PERFORMING ARTS CENTER OF SUFFOLK COUNTY
Gift Certificates
 ADMIT ONE

Proposed Shows for 2018

Les Misérables **CABARET** **SOMETHING ROTTEN!** **CHICAGO**

"Fiddler on the Roof" **BILLY JOEL MOVIN' OUT** **THE SOUND OF MUSIC** **Disney's BEAUTY AND THE BEAST**

TheGateway.org | (631) 286-1133

*Proposed shows only!
 All titles are subject to availability.



SYDNEY TROXLER (*Ensemble, u/s Miss Shields*) is originally from NC, and is over the moon to be making her Gateway Playhouse debut with *A Christmas Story* after returning

from the high seas with Holland America Line! Regional: *Sister Act* (Sister Mary Robert), *How To Succeed...* (Rosemary), *Chicago, 42nd Street* (Ethel). All of my love and thanks to my wonderful family, friends, ATB, and the whole Gateway team. BFA Western Carolina University. IG: @sydtrox



CHRISTOPHER BRIAN WILLIAMS (*Ensemble, u/s Jean Shepherd*) is delighted to be back at Gateway after appearing in both *Billy Elliot* as well as Gateway's *Holiday*

Spectacular on Ice last year. Credits include performing in *Billy Elliot* on Broadway. Off-Broadway; *Freckleface Strawberry* (Danny), *Bedbugs! the Rock Musical* (Chad). Regional; *Fiddler on the Roof* / Walnut Street (Fyedka), *High School Musical 2* / NSMT (Ryan Evans), *Pirates!* / The MUNY, *Singing in the Rain* / STONC, *Mary Poppins* / NCT, *The Rivals* / The Hartford Stage, *The Magic Flute* / Conn. Opera. Merry Xmas!



ALEXANDRA VLACHOS (*Youth Ensemble*) is thrilled and honored to be making her Gateway debut with this talented cast in *A Christmas Story* where her theater story

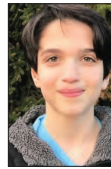
began. Broadway: *Matilda the Musical* (Matilda). Numerous community theater credits include *Beauty and the Beast* (Chip) and *Clara's Dream The Nutcracker* (Clara) for the American Dance Theater of Long Island. Various voiceovers, television and other professional recordings. Love to my supportive family and friends. Special thanks to my Gateway teachers Michael, Rachel, Bethany, Scot, Stage Door instructors, Abrams Artists and Ms. Kathy who have encouraged my dreams.



JENNIFER HOPE WILLIS

(*Mother*) Gateway: *Eliza in My Fair Lady*. Broadway: *Christine in The Phantom of the Opera*, *Eileen in Wonderful Town* opposite Brooke Shields,

The Woman in White and *Belle in Disney's Beauty & the Beast*. Della in *A Tree Grows in Brooklyn* with City Center's *Encores!*. Numerous leading roles in top regional theaters across the country and frequent symphony concert headliner. Lives right here in Long Island and her best job ever is mom to nearly 9 year old Vincent. Holding on to these childhood moments tight as they "pass you in an instant".



RAY ZERNER (*Schwartz*) is a 6th grader at Commack Middle School. This is his first show at the Gateway. Ray has performed in *Peter Pan Jr* as a pirate, *Beauty and the Beast*

Jr. as a villager, *Guys and Dolls* as Benny Southstreet, *Annie* as Lt. Ward, *Suessical* as a Wickersham Brother, *James and the Giant Peach* as Centipede, and *Fiddler on the Roof* as Constable, all at the TASCY at the Suffolk JCC. Ray is grateful for all of the love and support of his family and friends.

JOSEPH MIUTILLO (*Director*) has been part of The Gateway Playhouse as both a director and theatre teacher since the mid-90s. In addition to Gateway, his work has been seen at Bay Street Theater, the June Havoc Theatre, Theatre for the New City, and Guild Hall of East Hampton. Recent directing credits include: *This Wide Night* (Guild Hall of East Hampton), *The Scarlet Letter* (Bay Street Theater), and *Death of a Salesman* (Bay Street Theater). Joseph is a prolific member of the educational theatre community, and has been distinguished with The Rod Marriott Award - the lifetime achievement award from the New York State Theatre Education Association (NYSTEA). Over the past thirty years he's directed over 200



- Assisted Living with Supervision 24 Hours per Day, 365 Days per Year
- Post-Hospital/Rehab Care
- Medication Management
- Transportation Services
- Special Diets Observed
- Programs to Increase Awareness for those with Cognitive Impairments
- Pet Assisted Therapy

McPeak's Assisted Living is a Proud Supporter of the Gateway Playhouse



**More than just a place to live...
A BETTER WAY OF LIFE.**

286 North Ocean Avenue, Patchogue, NY 11772
631-475-0445 • www.mcpeaks.com

**We "Set the Stage" for
civilized travel to New England!**

**ROOM FOR OVER
90 VEHICLES
EACH CROSSING**

**ON BOARD
FOOD SERVICE &
STEAMBOAT LOUNGE**



**NUMEROUS
CROSSINGS DAILY**

**ENCLOSED
PASSENGER CABIN**

**BRIDGEPORT &
PORT JEFFERSON FERRY**

www.88844ferry.com 1-888-443-3779

Who's Who

productions with high school arts students, and continues to direct in the Young Artists and Writers Project (YAWP) at Stony Brook Southampton, and directed Gateway's production of *The Lion King Jr.* this past summer. Thanks to Paul, Michael, and the Gateway family. Love to his wife, Luci, and children, Megan and Gregory.

MARA NEWBERY GREER (*Choreographer*) is excited to be a part of another *Christmas Story!* Other choreography credits include *Thoroughly Modern Millie* (Music Theatre Wichita), *9 to 5* (Sacramento Music Circus), *The Toxic Avenger* (Pittsburgh CLO), *A Christmas Story*, *The Musical* (Seattle 5th Ave, Paper Mill Playhouse, Fulton Theatre), *Oliver!* (Plymouth State University), *Big Fish* (Front Porch Theatricals), *Shrek*, *The Musical* (Tuacahn, North Shore Music Theatre), *Legally Blonde* (Sacramento Music Circus), *Guys and Dolls* and *The Drowsy Chaperone* (University of Michigan) and the 2015 *Lucille Lortel Awards*. As a performer, Mara has worked on Broadway, national tours and regional theatres across the country.

Upcoming choreography projects: *Matilda* (Tuacahn), *Guys and Dolls* (Music Theatre Wichita). B.F.A. University of Michigan. Proud SDC and AEA member. Much love to JPot, CTG, and my incredible husband, Michael. Merry Christmas!!

HOSUN MOON (*Music Director*) is pleased to make her debut at the Gateway Playhouse! Her chamber music performances with numerous ensembles have been heard in Carnegie Hall, 92nd St. Y, Merkin Concert Hall, The Riverside Church, St. John the Divine, LeFrak Concert Hall in The Aron Copland School of Music, Columbia University, Hofstra Cultural Center, Union Square Park, Bryant Park, SUNY at Stony Brook, and various churches in New York area. She has worked as a music director for the musicals: *Kiss Me Kate*, *Thoroughly Modern Millie*, *Little Women*, *Secret Garden*, *Fiddler on the Roof*, *Carousel*,

THE Gateway
PERFORMING ARTS CENTER OF SUFFOLK COUNTY

LIVE & LET DIE
A SYMPHONIC TRIBUTE TO
PAUL MCCARTNEY

JANUARY 14
AT PATCHOGUE THEATRE

TheGateway.org | (631) 286-1133

*The
Lake
Shore*

Assisted Living Residence

211 LAKE SHORE ROAD, LAKE RONKONKOMA, NY 11779

631.585.8800 | LAKESHORELI.COM



RATES STARTING AT **\$2,700 PER MONTH!**
CALL US TODAY TO SCHEDULE A TOUR!

CHET MITRANI PLASTERING, LLC

Four Generations of Quality Craftmanship

TRADITIONAL 3 COAT PLASTER | VENETIAN PLASTER

ORNAMENTAL PLASTER | CEMENT STUCCO

SPRAY FIREPROOFING | VENEER PLASTER | LATHING | EIFS

CHET MITRANI

Office: 631.468.3150 Fax: 631.468.3152 Email: chet@cmitraniplastering.com

1039 Waverly Avenue, Holtsville, NY 11742

Urine Town, Pajama Game, Mame, The Producers, A Funny Thing Happened on the Way to the Forum, La Cage aux Folles, Ragtime, Hairspray, Highschool Musical II, The Little Mermaid, How to Succeed in Business without Really Trying, Moey's Fairy Tale (Premiere performance at Dix Hills Performing Art Center, NY), *Cinderella, The Little Shop of Horrors, The Little Mermaid, Wedding Singer, Shrek, Dr. DoLittle, Godspell, 'You're a Good Man, Charlie Brown', Dr. DoLittle, 'I love you, You're perfect, Now change', Beauty and the Beast, Schoolhouse Rock, Seussical, Cabaret, Once upon a Mattress, and In the Heights*. She also worked with the San Francisco Early Music Society Baroque Music Seminars, C. W. Post Chamber Music Festival (LIU Chamber Music Festival), and taught at the USDAN Summer Camp and Five Towns College in Dix Hills, NY.

JOHN "JP" POLLARD (*Production Stage Manager*) joins us for his 14th production at Gateway. Favorites include the recent *Mamma Mia*, starring Patrick Cassidy, *Nice Work If You Can Get It*, starring Sally Struthers and *Anything Goes* starring Sally Struthers and Andrea McArdle. JP has assistant stage managed the West Coast tour of *An Act of God*, starring Sean Hayes, as well as *Carrie: The Musical Experience* in Los Angeles. He got his start in the theatre over 35 years ago working at Earl Holliman's Fiesta Dinner Playhouse, in his hometown of San Antonio, TX. Previous career highlights: the SRO San Francisco run of *The Search for Signs of Intelligent Life in The Universe* starring Lily Tomlin, four seasons at New Jersey's Paper Mill Playhouse, and an International production of *Grease - Das Musical* which toured Germany and Switzerland. In addition to theatre, he has also spent time as personal assistant to actress Sarah Jessica Parker. Proud Equity member since 1983. This one is for Roy Miller. "See ya at the bar, buddy."

BRITTANY LOESCH (*Scenic Coordinator*) is pleased to be working on this Major Award! Previous Gateway designs include *Rent, The Rocky Horror Show, Sophisticated Ladies, The Drowsy Chaperone, Avenue Q*, as well as *I Love a Piano* and *S'Wonderful* for both set and projection design. She has also designed past seasons of Gateway's *Haunted Playhouse*. Brittany is currently the Prop Designer for The Actors Studio Drama School. Other New York credits include sets for *Language of Angels* (Abrons Art Center) and props for *Così fan tutte, Ghosts of Versailles, and Mahagonny* (Manhattan School of Music). Have a Merry Fudging Christmas! Brittanyloesch.wix.com/portfolio

JOSE SANTIAGO (*Lighting Designer*) is happy to be back "home", where he started 15 seasons ago as an Electric Intern. Past designs include: *Evita, 42nd St, Spamalot* (North Shore Music Theatre); *Rent, Anything Goes, Rodgers and Hammerstein's Cinderella, Sister Act The Musical, Young Frankenstein, White Christmas* (Gateway); *Of Mice and Men* (Bay Street Theatre); *Man of La Mancha, Beauty and the Beast, West Side Story* (The Wick Theatre); *Parade, Best Little Whorehouse in Texas* (Merry-Go-Round Playhouse). He received his Master of Fine Arts in Lighting Design from Florida State University. <http://www.jsantiagodesign.com>



MVP AUTOMOTIVE

WE PROUDLY SUPPORT *The Gateway*



2 LOCATIONS! BELLPORT & BROOKHAVEN

152 SOUTH COUNTRY RD, BELLPORT 631.776.1010

2515 MONTAUK HWY, BROOKHAVEN 631.803.8778

INSPECTIONS ■ CHECK ENGINE LIGHTS ■ EXHAUSTS ■ OIL CHANGES ■ TUNE-UPS
BRAKES ■ TIRES ■ DEALER SERVICES & SO MUCH MORE...

www.mvpautomotive.com

Complete Auto Care for Foreign & Domestic Vehicles



NIKE EYEWARE • COACH • NINE • TORY BURCH • LAFONT • DOLCE & GABANA • LACOSTE



THE EYECARE CENTER OF BELLPORT

Dr. Edward Deneve, *Optometrist*
Pam Beckerman, *Optician*

5 Bellport Lane, Bellport Village
Phone: 631.286.4014

DIGITAL • PROGRESSIVE • NO-LINE LENSES

WIDER FIELD OF VISION, SUPERIOR CLARITY
COMPARED TO REGULAR PROGRESSIVES

FREE DESIGNER FRAME*

FREE EXAM
EVERYDAY

WITH PURCHASE**

WE ACCEPT ALL INSURANCE PLANS

*Select Frames. **Bring in this Playbill Ad for discounts. Not valid with any other offers, plans or packages.

RALPH LAUREN • LACOSTE • ADIDAS • SILHOUETTE • VERSACE • NINE WEST

PRADA • LACOSTE • ADDAS • SILHOUETTE • VERSACE • COACH • NINE

ADRIENNE VITTADINI • NINE WEST • COLORS IN OPTICS, LTD. • VALENTINO • VERSACE • LAFONT

PERFORMING ARTS CENTER OF SUFFOLK COUNTY

Board of Directors

Chair Diane Giattino
Vice-Chair Ann L. Nowak

Secretary/Treasurer Gale Edwards
Directors Paul Allan, Frank Lento
Lisa Meyer Fertel

Administrative

Executive Artistic Director Paul Allan
Director of Business Operations Jeff Bellante
Casting Director Michael Baker
Company Manager Aubrey Kyler
Director of Development/
Public Relations Scot Patrick Allan
Casting Assistant Rachel Colson
Payroll Gale Edwards
HR/Contracts Coordinator Ada Graham
Marketing Director Jodi Giambone
Guest Services Tim Cole
Office Assistant Dave Cohen

Artistic Staff

Director Joe Minutillo
Choreographer Mara Newbery Greer
Music Director Hosun Moon
Scenic Coordinator Brittany Loesch
Lighting Designer Jose Santiago
Costume Coordinator Megan Reed
Wig and Makeup Designer Amber Martin
Musical Contractor Peter Pece
Production Photographer Jeff Bellante
Season Understudies Scot Patrick Alan
Michael Edward Baker

Facilities

Facilities & Concessions Manager .. Blake Armitstead
Cleaning Staff Jasper Bailey
House Staff David Bellante, Ralph Bianco
Denise Croke, Brianna Coccia, Meghan Fawcett
Lauren Hersh, Kjell Houghtalen, Joe Kraus
Dominic Mondì, Alex Pardo, Danny Parr
Tyler Pegg, Marissa Ruiz
Grounds Maintenance .. HTM Landscaping Company
General Counsel Ann L. Nowak

Production

Production Manager Brian Loesch
Production Stage Manager John "JP" Pollard
Rentals Manager/Assistant
Production Manager Tony Tambasco
Technical Director John Sabo
Master Electrician Matthew Brehm
Sound Engineer Robert McGarrity
Props Master Mitch Domer
Wardrobe/Wig Supervisor Megan Reed
Wig Master Amber Martin
Assistant Technical Director Michele Ponton
Asst Stage Manager Megan McQueeney
Patrick St. John
Shop Foreman John Paul Baker
Asst Master Electrician Tim Dick
Wardrobe Shop Assistant David McKell
Props Assistant Zach Thomas
Wardrobe Crew Chief Katrina Blankenship
Scenic Artist Miranda Beck-Bird
Staff Electricians Brian Lenahan, Riley Noble
Carpenters Colin Colford, Anthony Gasbarri
Louis Perrotta, Gregory Pitts
Megan Ruskey
Sound Assistant Patrick Osborne
Associate Wardrobe/Wig Supervisor ... Jordan Saylor
Wardrobe/Child Wrangler Alyssa Burton

Education

Acting School Director Michael Baker
Acting School Manager Rachel Colson
Teaching Staff Rachel Colson, Bethany Dellapolla
Matt Karris, Brooke Turner, Amy Woschnik
Accompanists Jeff Hoffman, Peter Pece
Anthony Vetere

Box Office

Box Office Manager/Group Sales Laurie Cole
House Manager/Group Sales Joanne Famiglietti
Box Office Staff Abigail Beodeker
Cooper Cannizzaro, Julia Bellante
Janet Caponi, Judy Bianco, Melanie Hamilton
Phyllis Kaye, Tina Realmuto

Swan Bakery

All Occasion Cakes

The Official Bakery of Gateway Playhouse

Guy Gagliano

15 South Country Rd. | East Patchogue, NY 11772
(631) 475-9626



THANK YOU TO OUR VOLUNTEERS

Carmela Aiosa, Missy Atchue, Violet Bezler, Camille Brideson, Mary Lou Cohalan, Nancy Connolly, Millie D'Agostino, Pat Ely, Betty Entress, Kristina Farmer, Linda Gaimaro, Joyce Gambina, Kaitlyn Gambina, Linda Gomez, Linda Good, Mary Hubner, Barbara Keup, Bob Koenig, Mary Lanier, Jo Livote, Beatrice Marelli, Andrea McCabe, Connie Merced, Sue Nemet, Judy Onorato, Peter Pernice, Bea Peters, Linda Randolph, Sandy Reifel, Pat Satalone, Harold Schiffman, Cathy Steinkraus, Nancy Wierzbowski, Mary Wirth, and Joyce Wowak.

YOUR AD HERE

ADVERTISE IN THE NEXT *Gateway* PLAYBILL

Visit www.gatewayplaybill.com for more information or call us at
631-400-3086 to speak to an account manager.

CONTRIBUTE TO THE FUTURE OF THE ARTS

We invite you to lend your support and become a bigger part of our performing arts family.

- ★ **STAR BILLING**
\$25,000 +
- ★ **LEADING PLAYER**
\$15,000 +
- ★ **PRINCIPAL ROLE**
\$5,000 +
- ★ **DIRECTOR'S CIRCLE**
\$2,500 +
- ★ **FRONT ROW VIP**
\$1,000 +
- ★ **BACKSTAGE PASS**
\$500 +
- ★ **CAST MEMBER**
\$250 +
- ★ **STAGE HAND**
\$100 +
- ★ **FAN CLUB**
\$50 +

GO TO THEGATEWAY.ORG AND CLICK ON SUPPORT OR CALL (631) 286-7027 FOR MORE INFORMATION

The Performing Arts Center of Suffolk County is a 501(c)3 non-profit organization – all donations are 100% tax-deductible. Thank you for your contribution to the future of the arts!

To adjust the way your name is listed here, please email Scot@TheGateway.org or call 631-286-7027.

BOARD MEMBERS

Paul Allan
Gale Edwards
Diane Giattino
Frank Lento
Lisa Meyer-Fertal
Ann Nowak

STAR BILLING

The Dooner-Rockwell Charitable Trust
Ingird Arneberg and Will Marin
AARP
The Knapp Swezey Foundation
County of Suffolk

LEADING PLAYER

The Kana Family
Suffolk Federal Credit Union
Wyndham Hotels and Resort

PRINCIPAL ROLE

Avinos Italian Table
The Bellport Restaurant
The Brickhouse Brewery
Cecile Defforey
New York State Council on the Arts
Frank and Ginny Palamara
Painters Restaurant
Porters on the Lane
Mr. and Mrs. Richard D. Rockwell
Searles Graphics, Inc.
South Country Tavern
Sunset Harbour
County of Suffolk - Cultural Arts Council

DIRECTOR'S CIRCLE

Estella and Robert Clasen
Catherine Ann Conneally
Cullen and Danowski LLP
Fiori Enterprises
MVP Automotive
William J. O'Neill Sales Exchange Co., Inc.

FRONT ROW VIP

Teresa Abramowski and Everett Och
Kent and Connie Adee
John and Loree Bowcock
Camelot Party Rentals
John Shea Jr. and Diane Crean
Phil and Debbie Grucci

HSBC

Cheryl A. Felice and Lorraine Kuehn
Judy Fortuna-Ince and Peter Ince
J. and Robert Klingler
Robert Koenig
Gloria Mancuso and Glenn Dielmann
Mediterranean Manor
Dave and Debbie Morrissey
Michael and Hwasoon Mullaney
Phylis Natoli and Debbie Ann Chang
Papa Nicks Pizzeria
Barbara and Eric Russo and Family
South Country Lions Club

BACKSTAGE PASS

Bill Allan and Mary Lou Maloney
Janet Anderson
Brookhaven Choral Festival
Ken and Helen Budny
Dr. Kym Carpentieri and Mike Eller
Linda Carr Relethford
Dominic and Patricia Cassella
Tom Connelly
Thomas and Sara Jane Corwin
John and Erna Cuenin
Mary Jane and Brian Cullen
Gloria Cummings
Charles and Linda DesJardin
Kim Dooney
Carol Dubin
Ken and Tami Fehling
Flanzer Construction
Anna Lou Fletcher
Fran and Laurie Fosmire
Ed Graziano and Doug Carabe
Judith Hope
Susan Kahl and Jim Vaughan
Titus Kana
Timothy Kana
Joan and Irwin Kirtman
Ed and Barbara Knowles
Vasilis Kreatsoulas
Jeffrey Leibowitz, Atlantic Agency Insurance and Risk Management
Vincent and Linda Leuzzi
Ann Marie and Gary Loesch
Jane Love
Margie K Ludewig
Roe Agency

Joe and Tricia Manno
Jim Martinsen and
Robin Stevens
Glenn and Louise Mehrrens
Eugene Nifenecker
and Meredith Bain
Veronica K. O'Connor
Bob and Kathe Palermo
Maria and Richard Pierce
Bob and Ann Quinn
Peg and Al Rand
Jean-Marie and
Selima Salaun
Walter Schroeder
Matthew and
Alison Scollan
Diane Sherman
Judith Steinberg
Frank and Marie Trotta
John and Lorelei Tuthill
Alison Buck and
Rob Wegener, TOLA.
Joseph and Patricia
Van De Wetering
James and Ellen Vlachos
Peter E. Williams

CAST MEMBER

Michael and Jessica Baker
JoAnn and
Horst Boettcher
Robert and
Claudia Connors
Kathy and Tom Cullen
Hal Danziger
Alexandra Diamond
Susan DiBernardo
Melissa Donovan-Foglia
Kim Dooney
Bob Durkin
Marjorie Feeney
Guy Gagliano
Anthony Gandolfo and
Sal Rosa
Robert and
Allene Goldberg
Alfred and Eleanor Hobbs
Judith Hope
Todd Kana
Chris Kana
Austin and Hannah Kana
The LaFountain Family
Nikki Lint
Brian and Brittany Loesch
Andrea McCabe
Murray and
Quarletere Fuel Oil

Lauri Murray
Renee Negron
Daniel and Michele O'keefe
Fred Ordower
Ann and Bob Quinn
Swan Bakery
John and Janet Taylor
Peter Teofrio
Susan and
Magnus Thorstenn
David Tobachnik and Alice
Ann Humphrey
Terry and Joanne Tuthill
Bob and LouAnn Tuzza
Reverend and
Mrs. John Wallace
Carolyn and
Francis G. Walsh
Ginny and Pres Waterman
Scott York and Don White

STAGE HAND

Leonard and Eileen Astrin
Ion and Miana Azzola
Kevin and Patrice Beach
Troy Beard
Mr. and Mrs. Jeff Bellante
E. L. Bergen
Bisagni Family
Janet and Fred Braun
June Cardenas
Mary Lou Cochlan
Elaine and Irwin Cooper
Susan Daconto
Rich and Kathleen Dallin
Mr. and Mrs.
Edward Dankievitch
Judith Drange
Nancy Duncan and
Jamie Moog
Elizabeth Entress
Wendy and Roy Erlandson
Nick and Julia Fasano
Lorraine Fey
Katie Ford-Mehrkens
Mr. and Mrs.
Philip Gambino
Carl Goodwin
Jane Potter Graham
Gladys Gregnoli
Felix and Madeline Grucci
Marilyn Hamilton and
Joseph LaGennusa
Sally Harris
Timothy and
Laura Hawryluk

Jan Heblch
Richard Hoshino
Richard Jacoby
Janice F. Klein
Michael and Gae La Salle
Carol and Giacomo LaFata
Richard and Janet Loehr
Dominick LoSquadro
Ann Lucas
Gail M. Mancuso
Susan Masciello
Ellen J. Masterson
Nancy McGovern-Halloran
John Morris
Suzanne Niemeyer
Terence Noonan
and Matthew Gray
Kevin and Joy O'Brien
Mrs. Allison O'Keefe
Ann and Bill O'Shea
Karen and Sal Palacino
Jeanette Paolillo
John Papandrea
Dennis and Sharon Pape
Lynn and Joe Pessalano
Bob and Sally Phildius
Rev. Thomas Philipp
Jean Pokorny
Alyse Porsella
Anthony and
Rachelle Psaris
Sandy Reifel
Ruth and Stanley Resnick
Bill and Monica Rignola
Hank and Sonny Rotella
Frank and Judith Russo
Ray W. Schiemel and
Susan E. Coseglia
Donald and Iva Sheehan
Geri and Joe Skelly
Dr. Frederick and
Sheila Small
Michele Smith
Donald Steckler
Don and Ann Stonebridge
Lawrence J. Strickland
Denise and
Richard Strothman
Patricia Tarasenko
Laura Terwilliger
Patricia A. Trainor and
Taylor O. Alonso
Nancy and
Roy Vaillancourt
Diana Voorhees
Irwin and Susan Wein
Genie and Carol Weisman

Allen and
Angela Welcome
Cindi and Robert Wellins
William and
Janet Wroblewski
Kathy and Ira Zankel

FAN CLUB

Ann Baum
Kevin and Patrice Beach
Richard and Evelyn Brody
Hat and Stachery
Leslie Cook
The Cotter Family
Kathie Davis
Tracey Davis
Dennis and
Kathleen Desmond
Carol Drechsler
Myrna Einbinder
Phil and Patricia Faicco
Thomas and
Jo-Ann Gilhuley
Joseph and
Tara Graskemper
The Guarnaschelli Family
Elizabeth and Lee Harrison
Kathy Scheuermann
and Friends
Kathleen Irish
Frances Iwanicki
Robert Judem-Cautin
David and
Peggy Kulakowski
Carol Lucas
Maxine Maher
Barbara Mazzella
Lewis and Karen Miller
Mr. Murray Naviloff
Stan and Joan Novack
Susan and
Michael O'Grady
Michael O'Grady
Richard and
Ruth Ann Otterstedt
Ronny Pliszak
Janet Rate
Andrew and
Jennifer Setzer
Mary Ellen Smith
Gary and Diane Zanazzi
Dr. Paul and Ingrid Zola

**Listed names reflect 2017
FY donations*



Ruland

FUNERAL HOME, Inc.

*Proudly Supporting The Arts
That Enrich Our Lives*

475-0098

500 N. OCEAN AVE., PATCHOGUE NY 11772



50% OFF
your first class
with this ad!

*A beautiful yoga studio in historic
Patchogue, serving the people of our
community for 15 years!*

Traditional Ashtanga • Vinyasa Yoga
Naam Yoga • Corporate Yoga • Children's Yoga

Meditation • Chanting • Reiki

**WE BELIEVE IN THE POWER AND THE
HEART OF YOGA! NO FADS, NO
GIMMICKS, JUST THE REAL THING.**

Yoga Yama

13 North Ocean Avenue • Patchogue, NY
516-902-7297 • www.yoga-yama.com

Swezey

FUEL CO., INC. - EST. 1919

Suffolk's Largest Family Owned Energy Company

- Heating & Air Conditioning
- Automatic Oil Delivery Service
- 24-Hour Emergency Service
- Budget Plans that Pay You Interest
- Expert Installations of Boilers,
Burners, Hot Water Heaters & Air
Conditioning Equipment



475-0270

51 RIDER AVE., PATCHOGUE



ROE AGENCY INC.

*Over A Century of Commitment
Since 1898*

ALL FORMS OF INSURANCE

PERSONAL & COMMERCIAL

Call us for a quote!

125 East Main St., Patchogue, NY 11772
p: 631.475.4000 f: 631.475.7648

THERE'S STILL TIME TO JOIN!

Registration for the 2017-18 Dance Year is still open, but class spaces are limited. Call or visit us online today to join our family!



STAGE DOOR SCHOOL OF DANCE

655-19 Montauk Highway, E Patchogue, NY
631.654.8858 www.StageDoorDancer.com

CONGRATULATIONS TO STAGE DOOR DANCERS

*Alexandra, Allie, Faye,
Jarod, Lainey, & Megan.*
FOR THEIR ROLES IN
A Christmas Story!



PATCHOGUE EVENTS 2017

COME SEE WHAT EVERYONE IS TALKING ABOUT

#BOUGHT IT IN PATCHOGUE

Include the hashtag #BoughtItInPatchogue in your Instagram and Facebook posts throughout the holiday season. Whoever uses the hashtag to highlight the most holiday shopping finds will receive a prize at the end of the season.

SMALL BUSINESS SATURDAY - NOON-7PM

SATURDAY, NOVEMBER 25

THE ART OF SHOPPING - NOON-5PM

SATURDAY, DECEMBER 9

HOLIDAY SHOP & SIP - NOON-5PM

SATURDAY, DECEMBER 16

**TWAS THE SATURDAY
BEFORE CHRISTMAS** - NOON-5PM

SATURDAY, DECEMBER 23

MIDNIGHT ON MAIN STREET - 7-9PM

SUNDAY, DECEMBER 31



ALL EVENTS LISTED ARE LOCATED ON MAIN STREET,
OPEN TO THE PUBLIC AND FREE TO ATTEND.



BUILDING COMMUNITY THROUGH COMMERCE

For more information, visit Patchogue.com,
call 631-207-1000 or email info@patchogue.com.



Men's and Women's
CLOTHING BOUTIQUE
Clothing • Shoes • Accessories

7 Village Green, Patchogue
(located in the New Village)

www.thredny.com
631-730-5755





Where I grew up every young boy needed to master the art of kite flying.

The thread in your hands, guiding the kite as it soars, lifting your spirit.

Makes you feel part of something bigger than yourself.

You feel that at a community hospital... especially Brookhaven.

We know our patients. Their families. Their stories.

Our work is to save their lives.

The new Knapp Cardiac Care Center will help us save even more.

My spirit is soaring."

- Dr. Waqas Khan
Interventional Cardiologist
Knapp Cardiac Care Center



A more heartfelt approach to cardiac care.
brookhavenhospital.org/knapp



MONTI'S
AUTO WORKS

IT'S IN THE DETAILS

**EXPERT AUTO
COLLISION REPAIRS**

ALL INSURANCE ACCEPTED



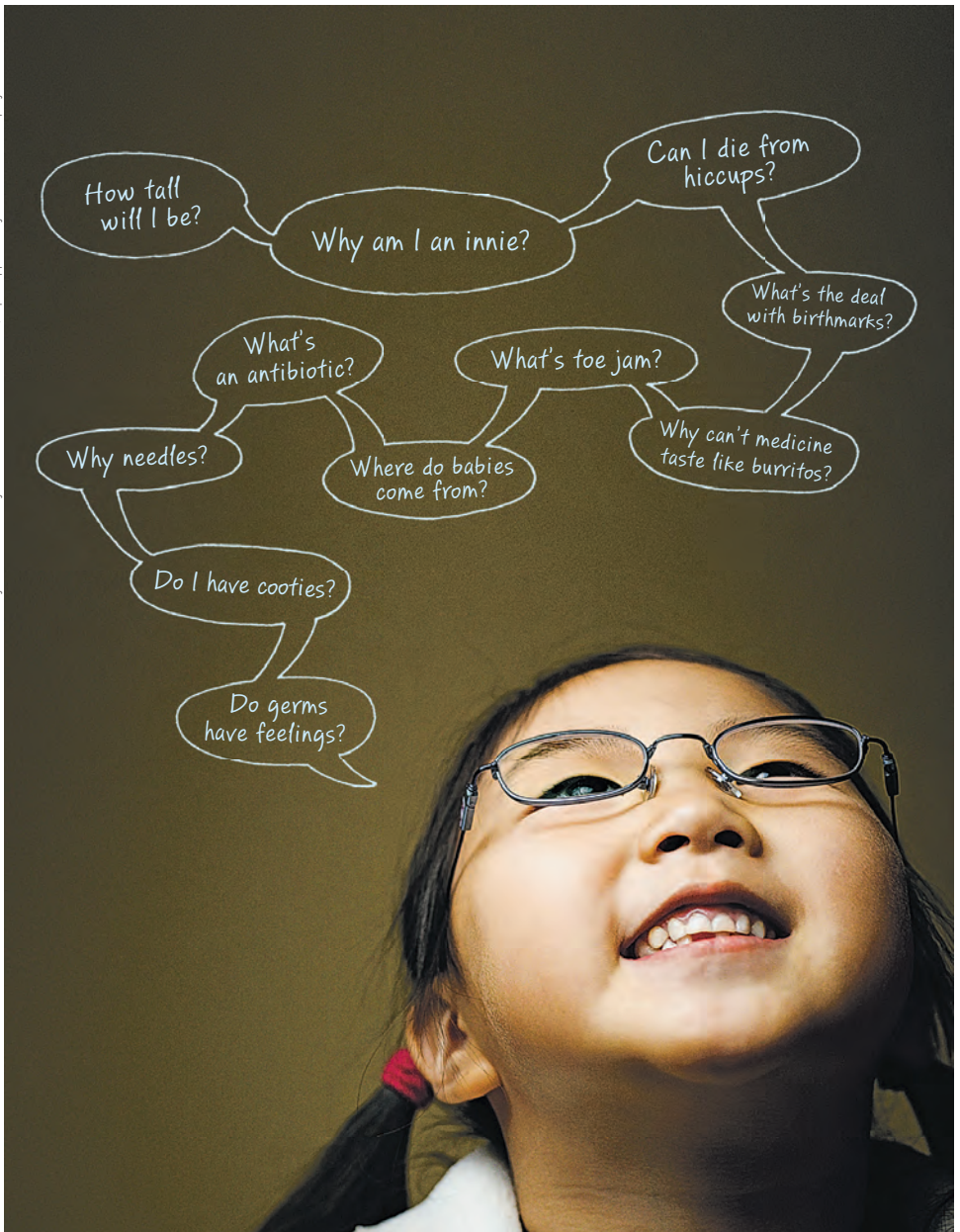
1791 MONTAUK HIGHWAY
BELLPORT, NY 11713

286-2116

ANTOS AGENCY INC.
Insurance Services
AUTO * HOME * BUSINESS
Insurance Protection Since 1979
You can count on us!

INSURANCE YOU CAN TRUST!

CALL US FOR A FREE QUOTE
631-360-3737
158 Terry Road
Smithtown, NY 11787
antosagencyinc.com



They have questions. We have answers.

And with more than 180 pediatric specialists at Stony Brook Children's Hospital, we also have the unique ability to treat even the most difficult health needs of your child, all in a kid-friendly environment made just for them.

Part of Stony Brook Medicine | stonybrookchildrens.org



**Stony Brook
Children's**

The best ideas in medicine for kids.

THE BRISTAL ASSISTED LIVING • WHERE EVERY DAY MEANS MORE®

EXPERIENCE THE DIFFERENCE EXPERIENCE THE BRISTAL



Photos: Bistro, The Bristol at Holtsville; Dining Room & Game Room, The Bristol at Sayville

The
Bristol
ASSISTED LIVING

Call Us Today to Schedule Your Visit

HOLTSVILLE | 5535 Expressway Drive North | (631) 828.3600

SAYVILLE | 129 Lakeland Avenue | (631) 563.1160

thebristol.com



Licensed by the New York State Dept of Health • Eligible for Most Long Term Care Policies
Equal Housing Opportunity • Quality Communities by The Engel Burman Group

