



The Musical

Book by Thomas Meehan & Bob Martin
Music by Matthew Sklar • Lyrics by Chad Beguelin

Based on the New Line Cinema film written by David Berenbaum

DECEMBER 2019

THE **30TH**
Gateway
ANNIVERSARY



HOPE LIVES HERE. Cancer changes everything. But at Stony Brook University Cancer Center, we're changing everything about cancer care. By bringing doctors and researchers together like never before, we're bringing the latest innovations in personalized cancer care close to you. With powerful technology, clinical trials, comprehensive support services, precision medicine, and expertise in your particular cancer, we're giving new hope to those changed by cancer and to all the people who love them.

ThisChangesCancerCare.com

Stony Brook University/SUNY is an affirmative action, equal opportunity educator and employer. 19100658H



**Stony Brook
Cancer Center**

The best ideas in medicine.



PAINTERS'
Restaurant

Join us for
BRUNCH LUNCH DINNER

Serving Brunch Saturday & Sunday
11am - 3pm

BOOK YOUR
HOLIDAY PARTY

CALL OUR CATERING DIRECTOR

ZACH 631.923.8860

2 MILES EAST OF GATEWAY PLAYHOUSE
416 SOUTH COUNTRY RD. BROOKHAVEN, NY 11719

631.803.8593

Marketing Solutions for a Digital & Analog World



SEARLES
GRAPHICS

est. 1974

web • print • design

searlesgraphics.com | 631.400.3086

Listen to Lawrence!

*...and learn how to plan
the RIGHT way.*

FREE SEMINAR!

- Learn how to protect your assets from the high costs of Long Term Care
- Learn how to protect the money you leave to your children from their divorce
- Learn how to protect your children's inheritance from creditors, taxes and their own poor judgment

This informative program is FREE, but reservations are required.

Call 631-234-3030 or go online at: www.davidowlaw.com to find an upcoming seminar in your area!



Lawrence Eric Davidow
Senior and Managing Partner
**DAVIDOW, DAVIDOW
SIEGEL & STERN, LLP**
LONG ISLAND'S ELDER LAW,
SPECIAL NEEDS
AND ESTATE PLANNING FIRM



DAVIDOW, DAVIDOW, SIEGEL & STERN, LLP

Original Firm Founded 1913

Long Island's Elder Law, Special Needs and Estate Planning Firm

1050 Old Nichols Road - Suite 100, Islandia, New York 11749 | Tel. (631)234-3030

www.davidowlaw.com

Additional office locations: Garden City | Mattituck



Welcome to conclusion of our 70th anniversary season and this zany and heartwarming production of Elf. We are excited to bring this amazing production to the Patchogue Theatre, headed by one of Gateway's favorite director/choreographers - Keith Andrews. What a joy working together with Keith and the rest of the creative team to assemble all the pieces necessary to bring a full-scale musical to life in such a short amount of time. There's a reason why Gateway has flourished for so many years. It takes dedication – working outside of the spotlight and having a deeper connection to what drives this creative art. That's what makes the magic happen! There is more to being a great performer, technician, director, etc. than just having a special talent. There is something within us that has to be discovered, unlocked and let loose. You will see the results of this as the evening unfolds.

Looking ahead – the National tour of Stomp is next with performances on NYE and January 1st, and our winter/spring season was recently announced. Details can be found throughout this playbill or always at thegateway.org.

I'd like to thank everyone who came out to support us earlier this month at our 70th birthday celebration. Hosted by Isabella Rossellini, this was a collection of music, art, history and fun - and featured an array of artists including stars of Gateway shows from this and last season. What an outpouring of love, gratitude and passion for Gateway. Everyone volunteering their time and talents for a spectacular night. On that evening we raised funds for our capital campaign as well as our outreach programming and scholarship drive. If you missed the event, you can still support by making a contribution during our end of the year appeal which is currently underway. Pick up a packet at the ticket counter in the lobby or find out more on our website. Ticket sales alone will not sustain this operation. Our contributing members and subscribers are at the heart of what we do. Please join them!

When you enroll your kids in an acting program, attend a show, or provide financial support for The Gateway, you become part of a true Long Island Legacy. We are here to serve you and our community with high quality artistic endeavors. We look forward to seeing you at future performances, special events and fundraising activities. Please stay connected with us in whatever way works best for you – email, social media or even a letter or card. We love to hear from you!

Thank you for your patronage

A handwritten signature in black ink, appearing to read "Paul Allan".

Paul Allan
The Gateway
Executive Artistic Director



FREEDOM

to live carefree

Imagine having the luxury lifestyle you deserve without the concerns of living alone or maintaining a home. At The Bristol, we are committed to helping seniors stay independent while knowing that expert care is there if needed – delivered by a team who treat you like family. Every day you'll enjoy a vibrant community, countless social events with new friends, and the unmatched services and amenities you've come to expect from The Bristol.

SCHEDULE YOUR VISIT TODAY!

The Bristol at Holtsville
5535 Expressway Drive North
631-828-3600

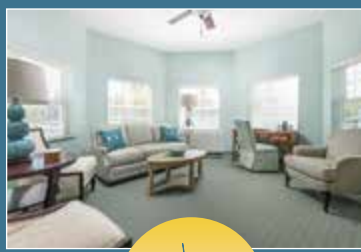
The
Bristol
ASSISTED LIVING

The Bristol at Sayville
129 Lakeland Avenue
631-563-1160

For a list of all locations in the tri-state area, visit: **THEBRISTAL.COM**



Licensed by the State Department of Health. Eligible for Most Long Term Care Policies. Quality Communities by Engel Burman.



THE VILLA AT WESTHAMPTON

Premier Assisted Living

An Exciting New Venture of Independent Senior Living

The Villa at Westhampton is an exclusive assisted living community nestled along 10 acres of sprawling lawns, spectacular gardens, walking paths and picturesque views. Moments away from the majestic Hamptons Beaches and Westhampton Beach Performing Arts Center.

**24 Hour Supervision • Case Management • Medication Management
Restaurant Style Dining & Country Kitchen
Social & Recreational Activities • Housekeeping & Laundry Services
Personal Care Assistance • Nursing Services
Legacy Memory Care Suites • Short Term Stays Are Welcome**

Call to Schedule Your Tour Today!

68 Old Country Road, Westhampton, NY 11977 | 631.240.8100
Email Us: info@hamptonsvilla.com | hamptonsvilla.com



New Years Eve



Following the 10pm show, grab a hat and noisemaker and watch the ball drop in Times Square with a champagne toast at midnight -

ALL INCLUDED IN THE PRICE OF YOUR TICKET!

The bar will also be open throughout the evening.

STOMP™

Three Performances at Patchogue Theatre

DEC 31, 6pm & 10pm | JAN 1, 4pm



TAKE ON SOMETHING UNEXPECTED TODAY

Today is yours for the taking. And AARP on Long Island is here in our community helping you make the most of it. Whether you're looking to give back at a soup kitchen, protect yourself from fraud at a free shredding event, or enjoy a discounted show with loved ones, we're here to connect with you and your family so you can get the most out of life.

So go make today and every day the best it can be.

Learn how at aarp.org/longisland

AARP® Real
Possibilities
Long Island

AVINO'S



ITALIAN TABLE



NEIGHBORHOOD ITALIAN REDEFINED

PASTA | SEAFOOD | STEAK

OPEN DAILY FOR LUNCH & DINNER
SUNDAY BRUNCH

631-803-6416

108 SOUTH COUNTRY ROAD, BELLPORT VILLAGE

AVINOSITALIANTABLE.COM



LOBSTERFEST, EVERY MONDAY
SERVING BELLPORT SINCE 1985



Serving Long Island since 1946

Cakes for all Occasions Best Jelly Donuts on Long Island

Providing delicious cakes and goods
to the Gateway for over 20 years!



631.475.9626

15 South Country Road, Patchogue, NY 11772
www.SwanBakery.wix.com/SwanBakery
SwanBakery@yahoo.com



Presents

ELF THE MUSICAL

Book by
**THOMAS MEEHAN
AND BOB MARTIN**

Music by
MATTHEW SKLAR

Lyrics by
CHAD BEGUELIN

Based upon the New Line Cinema film written by David Berenbaum

featuring

PATRICK MASSEY

and

**ANNIE EDGERTON JENNIFER FOGARTY JOE GATELY SETH LERNER STEVE LUKER
GERRY MCINTYRE MYCHAL PHILLIPS MARTY TIMLIN**

with

**CARINA AVILA JOHN BATCHAN JEREMIAH BRYANT AMELIA BURKHARDT LOUIS REYES CHAVEZ
DANIEL DEIST ALEX DOMINI KAITLYN LAGREGA SAKI MASUDA MEGAN JANE MCGUINNESS
EMILY KRISTEN MORRIS VINCENT ORTEGA CLINT MADDOX THOMPSON GINA WARD
HANNAH JO WEISBERG**

**AVERY ALLEN BRYNNE BALLAN KEIRA BALLAN MADISON BEEHNER SAMARA DECASTRO ALLIE DEMATTEO
THEA FLANZER ANNALISE ILG BRENDYN MOLNAR AIDAN PASSARO DANIEL RUBINSON**

Executive Artistic Director

PAUL ALLAN

Production Manager

BRIAN LOESCH

Director of Business Operations

JEFF BELLANTE

Associate Artistic Director

MICHAEL BAKER

Sound Designer

DON HANNA

Director of Development

SCOT ALLAN

Lighting Designer

JOSE SANTIAGO

Set Designer

JASON SHERWOOD

Projections/Media Designer

JASON LEE COURSON

Wig Designer

BOBBIE ZLOTNIK

Costume Designer

COLLEEN GRADY

Additional Costumes by:

DUSTIN CROSS and JILL TARR

Production Stage Manager

JAMES HANSEN

Musical Director

ANDREW AUSTIN

Associate Director/Co-Choreographer

VINCENT ORTEGA

Director/Choreographer

KEITH ANDREWS

Scenery, Props, Costume and Sleigh are leased through the courtesy of Ogunquit Playhouse, Ogunquit, Maine.

ELF-THE MUSICAL is presented through special arrangement with Music Theatre International (MTI).

All authorized performance materials are also supplied by MTI. www.MTIShows.com

ELF CAST OF CHARACTERS

(In Order of Appearance)

Santa	SETH LERNER*
Mrs. Claus	EMILY KRISTEN MORRIS
Buddy	PATRICK MASSEY*
Charlie	ALEX DOMINI*
Tiara	GINA WARD
Walter Hobbs	JOE GATELY*
Sam	JOHN BATCHAN
Matthews	DANIEL DEIST
Chadwick	VINCENT ORTEGA*
Emily	ANNIE EDGERTON*
Michael	MARTY TIMLIN
Deb	MYCHAL PHILLIPS*
Sales Woman	MEGAN JANE MCGUINNESS
Macy's Manager	GERRY MCINTYRE*
Jovie	JENNIFER FOGARTY*
Macy's Santa	ALEX DOMINI*
Little Boy	DANIEL RUBINSON
Policemen	JOHN BATCHAN, VINCENT ORTEGA*
Mr. Greenway	STEVE LUKER*
Charlotte Dennon	HANNAH-JO WEISBERG
Ensemble	CARINA AVILA, JOHN BATCHAN, JEREMIAH BRYANT, AMELIA BURKHARDT, LOUIS REYES CHAVES, DANIEL DEIST, ALEX DOMINI*, KAITLYN LAGREGA, SAKI MASUDA, MEGAN JANE MCGUINNESS, EMILY KRISTEN MORRIS, VINCENT ORTEGA*, CLINT MADDOX THOMPSON, GINA WARD, HANNAH-JO WEISBERG
Youth Ensemble	AVERY ALLEN, BRYNNE BALLAN, KEIRA BALLAN, MADISON BEEHNER, SAMARA DECASTRO, ALLIE DEMATTEO, THEA FLANZER, ANNALISE ILG, BRENDYN MOLNAR, AIDAN PASSARO, DANIEL RUBINSON
Production Stage Manager	JAMES O. HANSEN*
Assistant Stage Manager	LOGAN PRATT*
Dance Captain	VINCENT ORTEGA*
Assistant Dance Captain	CARINA AVILA

UNDERSTUDIES

Santa, Walter Hobbs	MICHAEL EDWARD BAKER*	Deb	HANNAH-JO WEISBERG
Buddy	ALEX DOMINI*	Macy's Manager, Mr. Greenway	SCOT PATRICK ALLAN*
Emily	MEGAN JANE MCGUINNESS	Jovie	GINA WARD
Michael	DANIEL RUBINSON		

THE ORCHESTRA

Music Director/Keys	ANDREW HAILE AUSTIN	Reed 1	MICHAEL KENDROT
Trumpet 1	CHARLES CLAUSEN	Reed 2	GEORGE CORTES
Trumpet 2	JOSH GANCI	Bass	CATHERINE O'MALLEY
Trombone	GREGORY DEANGELIS	Percussion	HARRY SMITH



*Actors employed in this production are members of Actors' Equity Association, the union of Professional Actors and Stage Managers in the United States.



The Musicians employed in this production are members of the American Federation of Musicians.



The Director/Choreographer is a member of the Society of Stage Directors and Choreographers, Inc., an independent national labor union.

WARNING: The photographing or sound recording of any performance is strictly prohibited.

FIRE NOTICE: The exit indicated by a red light and sign nearest to the seat you occupy, is the shortest route to the outside. In the event of fire or other emergency, please do NOT run. WALK to that Exit. However, under normal circumstances, when leaving the Theatre, use the center rear exits. SMOKING is prohibited in the BUILDING, as required by the Suffolk County NO SMOKING Ordinance. Smoking in any area designated "No Smoking" renders the offenders subject to a fine, or imprisonment, or both.


Stellar performances start here.

Be Ready.

St. Joseph's College offers innovative academic programs developed by top industry leaders and a rich, vibrant campus life to prepare today's students to take center stage as tomorrow's leaders.

FIND OUT MORE

sjcny.edu
631.687.4500

St. Joseph's
College 
NEW YORK

Ready. Set. Joe's.®

LONG ISLAND • BROOKLYN • ONLINE



MUSICAL NUMBERS

ACT I

Overture Orchestra
“Happy All the Time” Santa, Buddy, and Company
“World’s Greatest Dad” Buddy
“In the Way” Deb, Walter, Michael, and Company
“Sparklejollytwinklejingley” Buddy, Store Manager, and Company
“I’ll Believe in You” Michael and Emily
“In the Way” (Reprise) Emily and Walter
“Just Like Him” Buddy, Deb, and Company
“A Christmas Song” Buddy, Jovie, and Company
“World’s Greatest Dad” (Reprise) Buddy and Company

ACT II

Entr’Acte Orchestra
“Nobody Cares About Santa” Buddy, Manager, Fake Santas
“Never Fall in Love” Jovie
“There is a Santa Claus” Michael and Emily
“The Story of Buddy” Buddy, Michael, Walter, Greenway, Emily, Deb, and Company
“Nobody Cares About Santa” (Reprise) Santa
“A Christmas Song” (Reprise) Jovie, Buddy, Emily, Michael, Walter, and Company
Finale Company

Gateway PLAYBILL 2020 SEASON

ADVERTISE IN OUR UPCOMING WINTER/SPRING SEASON
Don't Delay, Ad Spots Are Booking Fast

presented by



Visit www.gatewayplaybill.com for more information
or call us at 631-345-2202 to speak to an account manager

From boxers to ballerinas.



Location courtesy of Ovations Dance Academy

We've served this richly diverse region as a community hospital for more than 60 years. And as the area has grown, so have we. But as Long Island doctors, nurses, and healthcare professionals, we've never outgrown our devotion to the health of the community we all call home.

That commitment can be seen in the Knapp Cardiac Care Center, a new surgical pavilion, our American College of Surgeons accredited trauma center, our women's imaging, breast health, bariatrics, vascular services and so much more.

So while we've updated our brand to represent our growth, there is one thing that will never change: Our commitment to make you feel as comfortable in our home as you do in your own.

See our featured services at www.LICommunityHospital.org

Your community. Your hospital.

Long Island Community Hospital

101 Hospital Rd, Patchogue, NY 11772 • 1.800.694.2440

Discover *Historic Bellport*
SHOP LOCAL

bellportchamberofcommerce.com



THE BELLPORT

Steps away from the Gateway Playhouse



New York Times Review

159 South Country Road, Bellport, New York 11713

(631) 286-7550 | www.bellport.com/thebellport



www.papanickspizzeria.com

Home of the Crispy Crust • Daily Specials

631-286-6400

117C South Country Road | Bellport Village



**LONG ISLAND
PRECAST**

20 Stiriz Road, Brookhaven, New York 11719

www.li-precast.com

631-286-0240

DON'T LET PAIN Interfere With Your Life!



DR. JOSEPH R. MERCKLING

Providing Relief for: Neck and Back
Pain | Headaches | TMJ Pain
As seen on News 12 Long Island for
Pregnancy Related Back Pain

Merckling Family Chiropractic, P.C.

16 Station Road, Suite 2, Bellport Village

631-286-2300 | www.mercklingdc.com

YOUR AD HERE

ADVERTISE IN THE NEXT
GATEWAY PLAYBILL

Visit www.gatewayplaybill.com for more
information or call us at 631-345-2202
to speak to an account manager.



Think of us as your Bridge to Winter Fun in New England.



CT



NY



A "Bridge" That Moves and Breaks the Sound Barrier!

Numerous Crossing Daily •
Walk-On Passengers • Cars • Trucks • Food Service & Steamboat Lounge

PORT JEFFERSON FERRY

Port Jefferson, New York
631-473-0286

www.88844ferry.com

Bridgeport, Connecticut
888-443-3779

Confused by Medicare?

- Are you paying too much for your prescriptions?
- Are you turning 65 and still working?
- Are you getting everything you're entitled to?

Choosing a Medicare Advantage Plan, Medicare Supplement Plan or Part D Drug Plan can be overwhelming.

**Imagine a stress-free
experience with
NO COST TO YOU!**



Cindy Goldsher Insurance

Senior Services Specialist, NYS Licensed Agent & Broker

CALL: 516-578-8330 EMAIL: medicarepro65@gmail.com

WEBSITE: cindyinsurance.com



THE NO FEE

State-Of-The-Art Showroom • Enclosed
ALL TO SERVE



10 YEAR/100,000 MILE POWERTRAIN LIMITED WARRANTY FREE WITH



**LOW PRICE GUARANTEE • SALES STAFF WITH OVER 10 YEARS EXPERIENCE
EXTENDED SERVICE HOURS 6 AM - 8 PM
DRIVE-IN RECEPTION AREA (NO APPOINTMENTS)**

\$250 OFF

Any New or Pre-Owned Vehicle Purchase or Lease!*

*Cannot be combined with any other offers. Coupon must be presented when order is written. Valid only at Sayville Ford. Coupon Expires: 4/30/20

5686 SUNRISE HWY EXIT 50, SAYVILLE, NY



ES DEALER!

es Service Drives • Giant Selection
YOU BETTER!



EVERY NEW & PRE-OWNED VEHICLE PURCHASE! (SOME MODELS EXCLUDED)

150 YEARS OF COMBINED EXPERIENCE • FLEXIBLE FINANCING OPTIONS

7AM-1AM MONDAY-FRIDAY • OPEN SATURDAY 7AM-6PM

(NO APPOINTMENT NECESSARY) • FACTORY CERTIFIED AND TRAINED TECHNICIANS

**\$19.95
OIL CHANGE
SPECIAL**

*Up to 5 quarts, additional extra. Full Synthetic or Diesel oil extra. Coupon must be presented when service order is written. Cannot be combined with any other offers or previous purchases. Cost does not include taxes, shop supplies, and hazardous waste fees, if applicable. Valid only at Sayville Ford. Coupon Expires: 4/30/20

**FREE
WHEEL ALIGNMENT
CHECK**

*Coupon must be presented when service order is written. Cannot be combined with any other offers or previous purchases. Cost does not include taxes, shop supplies, and hazardous waste fees, if applicable. Valid only at Sayville Ford. Coupon Expires: 4/30/20

NY • SAYVILLEFORD.COM • 855.783.7721



JANUARY 24 Your Favorite 80s Rock Music performed by an Energon-Fueled Transformers Band



FEBRUARY 7
A Led Zeppelin Tribute



FEBRUARY 13, 14
The Buddy Holly Story



FEBRUARY 21-23
Shakespeare's Comedy - As You Like It



MARCH 6-15 Agatha Christie's *Murder on the Orient Express* adapted by Ken Ludwig



MARCH 28
Yellow Brick Road - An Elton John Tribute



FEBRUARY 1, 2
An Evening with Groucho Marx



FEBRUARY 8 A Vegas - Style, Modern Americana Big Band With An Edge



FEBRUARY 15
A Journey Tribute Celebration



FEBRUARY 28, 29 From TV's *The Nanny*! Renee Taylor's - My Life on a Diet



MARCH 27
An Allman Brothers Tribute



APRIL 4, 5 Live and Let Die - Symphonic Tribute to Paul McCartney with Full Orchestra

THE *Gateway*
SCHOOL FOR THE

PERFORMING

ARTS

Be on stage!

ACTING CLASSES FOR ALL AGES

LEARN, LAUGH, SHINE!



50% OFF
NEW STUDENT
DISCOUNT WITH YOUR
TICKET STUB

NOW ENROLLING

TECHNIQUE • MUSICAL THEATRE • PRODUCTION

**TO LEARN MORE ABOUT GATEWAY SCHOOL FOR THE PERFORMING ARTS EMAIL
ACTINGSCHOOL@THEGATEWAY.ORG OR CALL (631) 286-0555, EXT 5000**

Who's Who



AVERY ALLEN (*Youth Ensemble*) is 15 years old and is thrilled to be back on the main stage previously performing in *Beauty and the Beast* and *Billy Elliot the Musical*. She's a student of the Gateway School for Performing Arts

and a senior dance company member at Stage Door School of Dance in Patchogue. Avery thanks Paul, Michael, Rachel, and her family for their love and support.



CARINA AVILA (*Ensemble*) is happy to be returning to The Gateway in *Elf*. She performed here this past summer in the regional premier of *On Your Feet*. She has also appeared in *In the Heights* at The Saugatuck Center for the Arts. Carina also works as a commercial dancer appearing on sitcoms for Nickelodeon and in ad campaigns for Apple. Carina would like to thank her family for always supporting her dreams. @carinaballerina_



BRYNNE BALLAN (*Youth Ensemble*) is so excited to be returning to the Gateway stage! Regional: *Sound of Music* (Marta), *Annie* (Kate), *Cinderella*, *Beauty and the Beast*. Recent Gateway Children's Theatre

credits include: *Little Mermaid Jr.* (Flounder), *Les Miserables* (Young Cosette). Brynne would like to thank her amazing Gateway family, Barbara Mordente (Dance), and Vivienne Grizzle-Jaber (Voice) for their constant guidance and support.



KEIRA BALLAN (*Youth Ensemble*) is excited to be part of *Elf the Musical!* Regional: *Sound of Music* (Louisa), *Annie* (July), *Cinderella*, *Billy Elliot*, *South Pacific*, *Beauty and the Beast*. Keira is a proud student of the Gateway Acting School since 2012. Recent Children's Theatre performances include: *Les Miserables*, *Mary Poppins Jr.* (Jane), *Little Mermaid Jr.* (Flotsam). Thanks to her Gateway family for their incredible support. Special thanks to Barbara Mordente (Dance) and Vivienne Grizzle-Jaber



JOHN BATCHAN (*Sam, Policeman, Ensemble*) is originally from Phoenix, Arizona and is now based in New York City. John's credits include *West Side Story* (360 IHI Tokyo, Japan), *Aida* (Axelrod PAC), *Newsies*, *The Scottsboro Boys*, and *In the Heights* (The Phoenix Theatre Company). While focusing on music theatre,

John continues to craft with choreography, writing/ rapping, film, modeling, and video editing. Keep up with John's journey: @jaybatchh www.johnbatchan.com



MADISON BEEHNER (*Youth Ensemble*) is so excited to be cast in another Gateway Production! Some favorites: Elsa (*Frozen Jr.*), Madame Thenardier (*Les Miserables SE*), Aquata (*Little Mermaid Jr.*) TV: *Stouffers*, PBS Kids

Music Videos. Thank you to all of the amazing teachers at Gateway, Michael Baker, Rachel, Jessica, Michael Mastroddi & Amy. Thank you to Stephanie & Mary at Stage Door. Love to my Mom and Dad, as well as my supportive family! Instagram: @madisonbeehner



JEREMIAH BRYANT (*Ensemble*) is making his Gateway Playhouse debut in *Elf* at the Patchogue theater. His recent credits include TJ in *Sister Act* at La Comedia theater, *Dreamgirls* at Venice Theater, and *Hairspray* at Jenny

Wiley Theater. Jeremiah, an AMDA alumni, is also a choreographer for the recording artist Marlena Moniece. He is grateful to his friends and family for their unconditional love and support. Most importantly he's grateful to God for this opportunity. - Jeremiah 29:11 @jeremiahbryant_



AMELIA BURKHARDT (*Ensemble*) is thrilled to be making her Gateway Playhouse debut with *Elf!* Some credits include: *In The Heights* (Mason Street Warehouse), *Peter Pan* (3-D Theatricals), *Hello Kitty Festival*

U.S. National Tour, Nickelodeon's *Big Time Rush*, *Disney's Camp Rock 2* Promo Video, FOX's '*Mobbed*' & *Good Morning America* '*Michael Strahan Birthday Episode*'. She is a Guest Faculty member at Steps On Broadway in NYC. She also travels the country teaching dance intensives for Liberate Artists INC and judges dance competitions for Star Dance Alliance. She would like to dedicate her performance to her parents for being the most loving and supportive people in the world. @ameliaburkhardt



LOUIS REYES CHAVEZ (*Ensemble*) is thrilled to be making his debut this winter at The Gateway Theater! Louis attended Pace University as a BFA in Commercial Dance with a

NORTH FORK NOW

NORTHFORKNOW.ORG | @NORTHFORKNOW
LODGING • DINING • EVENTS • ATTRACTIONS • GUIDE • MAP • CALENDAR



Become a Member Today!

Member benefits:

- Pays for itself in 2 visits
- Unlimited Admission
- 10% Off Adventures
- 10% Off Select Events
- 10% Off Gift Shops
- 10% Off Atlantis Café

long island
aquarium



431 E. Main St, Riverhead • 631.208.9200, ext. 103
LongIslandAquarium.com

THE FARMHOUSE BED AND BREAKFAST

Cutchogue, NY 11935



Farm to table weekends in the middle of
North Fork Wine Country
thefarmhousebedandbreakfast.com

AMERICAN BEECH

Restaurant | Bar |
Hotel | Boutique

300 Main Street
Greenport NY 11944



631-477-5939
info@americanbeech.com
americanbeech.com

AQUA BY AMERICAN BEECH

15 Bay Avenue
Aquebogue NY 11931



631-722-3212
aqua@americanbeech.com
aquahotelbeachclub.com

Cliff's ELBOW ROOM

World-Famous Steaks, Burgers & Seafood

10% OFF Entrée when you present this ad

Main Road, Jamesport
631-722-3292

Like us on
Facebook



CLASSICAL &
CONTEMPORARY
MUSIC
CONCERTS
5TH EDITION

SPRING CONCERT SERIES

APRIL, MAY, JUNE - VARIOUS EAST END LOCATIONS

Wine and Food Tastings served in beautiful settings

INFO/TICKETS AT WWW.RITESMUSIC.ORG



Mention this ad
and receive
15% DISCOUNT
through 12/31

Terms and conditions apply

1399 Main Road, Jamesport
631.722.4024 | duncaninn.com

concentration in choreography. Represented by MSA Agency, Louis is originally from Los Angeles and is now based in New York City. Previous credits include *The Secret Silk* (Stephen Schwartz), *Hairspray* (Donna Drake) and *Trevor The Musical* (Josh Prince). Thank you to the cast and creative team for making this holiday season anything but lonely! louisreyeschavez.com @louisreyeschavez



SAMARA DECASTRO (*Youth Ensemble*) is thrilled to be joining the cast of *Elf The Musical!* Stage credits include: *The Little Mermaid* (Ariel), *Frozen Jr.* (Anna), *Mary Poppins* (Jane Banks), and many more! She'd like to thank

the cast and creative team for all of their hard work and dedication, as well as her friends and family for always supporting her.



DANIEL DEIST (*Matthews, Ensemble*) is excited to be back performing with Gateway! A recent graduate from the BFA Acting program at Florida State, his previous credits include *Mamma Mia* (New Bedford Fest Theatre), *Bare:*

A Pop Opera, and *Beauty & The Beast* (Gateway). He extends all his love and appreciation to his family and friends. Go Noles!



ALLIE DEMATTEO (*Youth Ensemble*) is so excited to take part in another amazing Christmas production at the Patchogue Theatre! Other credits include: Brigitta in *The Sound of Music*, Young Nala in *The Lion King Jr.*,

Alana in *The Little Mermaid Jr.*, *A Christmas Story*, and *Beauty and the Beast*. She is extremely grateful for her supportive family and friends.



ALEX DOMINI (*Charlie, Macy's Santa, Ensemble, u/s Buddy*) made his Gateway debut with *Anything Goes*, starring Andrea McArdle and Sally Struthers. Other regional credits include Ogunquit Playhouse, Capital

Rep, McCarter Theatre, Weathervane Rep, and The Glimmerglass Festival. Alex has performed in readings and concerts at such prestigious houses like The Metropolitan Opera House, Goodspeed, and the Baseball Hall of Fame. Education: MSM (Precollege) and The Hartt School (BFA). Proud member of AEA. For my family, both chosen and biological. I'm forever grateful!



ANNIE EDGERTON (*Emily*) is thrilled to make her Gateway debut! Broadway/National Tour: *Kinky Boots*, *Mamma Mia!* Regional: Margie, *Good People*; Rosemary, *Outside Mullingar*; Violet, *9 to 5*; Adriana, *The Comedy of Errors*;

Mme. Thenardier, *Les Miserables*; Paulette, *Legally Blonde*. Annie is also the Wine Minx® and hosts "Wine Minx: UNCORKED!" and "Broadway Buzzed" on YouTube. She has sung the National Anthem for 25 of the 30 MLB teams (so far!) Proud Equity member. www.annieedgerton.com @wineminxannie



THEA FLANZER (*Youth Ensemble*)

is thrilled to be back at the Patchogue Theatre with Gateway's *Elf The Musical!* Credits include: Off-Broadway: *If You Press Yer Eyes Hard Enuf* (Theatre Row) Regional:

Gateway's *Mary Poppins*; *Billy Elliot*; *Holiday Spectacular on Ice*; *Shrek Jr* and more. Founder of The Artist Alignment. Special thanks to Keith, Michael, Rachel, Jess, Matt, Paul, RJA, the Mesianos, BSD, BMG Talent, and her family and friends.



JENNIFER FOGARTY (*Jovie*) is so happy to be returning to the Gateway Playhouse family. Natl/Int Tour: *The Addams Family Musical* (Wednesday). Select Credits: *The Secret Garden* (Martha), *Mamma Mia* (Ali/Ensemble),

Cabaret (Sally). Jen would like to thank Keith, Vince, Paul, and Michael for the opportunity to spread holiday cheer with this wonderful company. She'd also like to thank Colby for his unconditional love and support.



JOE GATELY (*Walter Hobbs*) is thrilled to work again with the Gateway after appearing in *Saturday Night Fever* several summers ago. Off Broadway: *Life Boat* (Riant Theatre), *Babes in Arms* (Musicals Tonight), *Triangle*

(59E59), *Rudolf II*, *The Velvet Oratorio* (UTC #61). Regional Theater: *Human Error* (Public/ME); *Elf, the Musical* (John W. Engeman, Fulton Theatre); *Mamma Mia* (Finger Lakes), *Guys and Dolls* (Maine State, Ogunquit), *Women in Jeopardy* (Pioneer Theatre), *Saturday Night Fever* (Gateway/Ogunquit), *Spamalot* (New London Barn), *God of Carnage* (Northern



Winter Shows



January 4 • 8pm



January 17 • 8pm



January 18 • 8pm



January 24 • 8pm



January 25 • 8pm



January 31 • 8pm



February 15 • 8pm



February 16 • 8pm



February 18 • 7pm



February 21 & 22 • 8pm



February 27 • 8pm



February 29 • 3pm

PatchogueTheatre.org | (631) 207-1313
71 East Main Street, Patchogue

Long Island
Community Hospital



Stage), *Annie* (New Stage); Film: *Affluenza*, *Fair Game*, *The Manchurian Candidate*; Television: "New Amsterdam," "Black List," "Person of Interest," "White Collar," "Blue Bloods," "Law and Order SVU," "Sex and the City," "All My Children." Proud member of Actors' Equity for 30 years.
www.JoeGately.com



ANNALISE ILG (*Youth Ensemble*) is thrilled to be in this production! Annalise has previously appeared as Liesl in *The Sound Of Music* (CMPAC), Manal in *Aladdin Jr* (Gateway), amongst many others. She would like to thank her family and her acting teachers for their support and inspiration throughout the years.



KAITLYN LAGREGA (*Ensemble*) is excited to be back on the Gateway stage to make her professional debut after getting her BA in Musical Theater at SUNY Cortland! This summer she was an offstage singer in Gateway's production of *The Bodyguard* and worked with all of the kids for *Sound Of Music*. Gateway credits include *Beauty and the Beast*, *Cinderella Jr.* (Anastasia), *Jungle Book* and many more. Cortland Performing Arts credits include *The Children's Hour* (Agatha), *The Rocky Horror Picture Show* (Phantom), *9 to 5* (Ensemble), and *Crazy For You* (Ensemble). She would like to thank Michael, Rachel, Keith and the company of *Elf* in this incredible show!



SETH LERNER (*Santa*) happily returns to the island of long having previously been seen in Gateway Playhouse's productions of *Anything Goes* as the Captain and *42nd Street* as Abner Dillon. Other credits include *Old Deuteronomy* in the North American tour of *Cats*, Jean Valjean in the Berlin premiere of Cameron Mackintosh's classic version of *Les Miserables*, Ezekiel Foster/Snoring Man in *White Christmas* directed by Randy Skinner and most recently *Weisell/Teddy Roosevelt* in *Newsies* at Theatre By The Sea. For the folks and Niu Niu.



STEVE LUKER (*Mr. Greenway*) over 100 legit shows, including Broadway (42nd Street), tours (Footloose, 42nd Street), Radio City (Christmas Spectacular), Off-Broadway (The P Monologues), and many Regional Theatres (Goodspeed, Bristol Riverside, Gateway Playhouse, Vero Beach, Riverside, North Shore Music Theatre, Theatre Under the Stars, Merry Go Round Playhouse, Theatre By the

Sea, New Harmony Theatre, the Engeman Theatre, The Entertainer Dinner Theatre, The Host Coral Dinner Theatre, Mt. Gretna Theatre, Barnstormers, Forestburgh Playhouse, etc.). Numerous TV commercial and voice overs, plus appearances on TV shows such as *Boardwalk Empire*, *Law and Order*, *Cosby*, *Hope and Faith*, *As the World Turns*, *One Life to Live*, and more. Love to wife, Susie, and sister, Kris.



PATRICK MASSEY (*Buddy*) Off-broadway: *Hounds of War*, *Foolerie* (NYMF) Regional: *Unlock'd* (Edwin), *She Loves Me* (Georg), *Brigadoon* (Charlie), *Toy Story the Musical* (Woody), *Les Miserables* (Marius), *Candide* (Candide), etc. Opera: *Heart of a Dog*, *Bovinus Rex*, *Let's Make a Sandwich*, *Picture of Dorian Gray* (Basil Hallward). Patrick is a proud graduate of UNC-Chapel Hill and the Boston Conservatory. Thanks to the lovely Mr. Peanut and family for your never ending support!



SAKI MASUDA (*Ensemble*) is thrilled to be back at Gateway Playhouse! Theatre: *The King and I* (1st national tour, Maltz Jupiter Theatre), *Cats* (Victoria; the Palace Theatre, Pentangle Arts), *The Bodyguard* (Gateway), *Awaited* (Crossroads), *Sayonara* (PanAsian Rep Theatre), *Sheherazade* (Prospect theater). TV: *Madam Secretary* (CBS). Dance: Heidi Latsky Dance, General Mischief Dance Theatre, Nai-Ni Chen Dance Company, Catskill Ballet Theatre among others. Gratitude to my family and Alexandra for believing me.



MEGAN JANE MCGUINNESS (*Sales Woman, Ensemble, u/s Emily*) is thrilled to be back at The Gateway! Credits: *The Sound of Music* (Maria u/s debut), *Beauty and the Beast* (u/s Babette/Bouche, Ensemble) at The Gateway, *Children of Eden* (Yonah/Choreographer), *Guys and Dolls* (Ferguson/Dance Captain) at the Forbes Center, *You're a Goodman*, *Charlie Brown* (Snoopy/Dance Captain) at the Carousel Music Theatre and Cedar Point Amusement Park. BA from JMU, go DUKES! Love and thanks to Keith, Michael, Rachel, the company of *ELF*, family and friends!
www.meganjanemcguinness.com / @meganjane10

ROCKVILLE CENTRE
 HUNTINGTON
 PATCHOGUE
 BABYLON

FIND FOODS
 HUNTINGTON

Food Done It?
 SEEK AND YE SHALL FIND

IF YOU DON'T
ALREADY KNOW
 IT'S TIME TO
FIND OUT
 WHAT IS AN
EDIBLE MYSTERY TOUR?

- 3 courses of food
- 4 hours (approx.)
- 3 savory sensations
- 2 sweet treats
- 1 main street mystery

631-438-1288
 WHO IS the YDI?

...and when do we eat?

CURIOS?
 Open your **PHONE'S CAMERA**
 and point it at one of **THESE.**

McPeak's
 ASSISTED LIVING



McPeak's Proudly Supports
The Gateway Playhouse

- Assisted Living with Supervision
- 24 Hours per Day, 365 Days per Year
- Post-Hospital/Rehab Care
- Medication Management
- Art Therapy, Music Therapy, and Yoga
- Transportation Services
- Special Diets Observed
- Programs to Increase Awareness for Those with Cognitive Impairments
- Pet-Assisted Therapy

More than just a place to live... A better way of life.
 286 North Ocean Avenue, Patchogue, NY 11772 • 631-475-0445 • www.mcpeaks.com

Who's Who



GERRY MCINTYRE (*Store Manager*)
BROADWAY: *Uptown It's Hot, Joseph....
Dreamcoat, Once On This Island*
(original company), *Anything Goes,
Chicago*. OFF BROADWAY: *Enter
Laughing*, (Drama Desk Nomination),

The Audience (Drama Desk Nomination), *Forbidden
Broadway* (NAACP and OVATION AWARD). TV:
*Boardwalk Empire, Law And Order, Whoopi, Jamie
Foxx, NYPD BLUE, Caroline In The City, The Nanny,
The Pretender, and Murphy Brown*. FILM: *The
Kiss, Broadway Damage, The Next Step, Joseph....
Dreamcoat* and *After The Storm*. Gerry is the winner
of the TBA AWARD and San Francisco Bay Area
Award for his choreography. gerrymcintyre.net



BRENDYN MOLNAR (*Youth Ensemble*)
is ecstatic to be back on the Gateway
Main Stage! Regional: *Sound of
Music* (Kurt) WHBPAC Arts Academy
Jr. plays: *Guys and Dolls, Wizard of
Oz, Seussical, Dear Edwina*. He is an

actor/singer/dancer, who has found his passion and
voice through the performing arts.



EMILY KRISTEN MORRIS (*Mrs. Claus,
Ensemble*) recently starred as Bea
in the national tour of *Something
Rotten*. Regional credits: Finger Lakes
Musical Theatre Festival (Sophie
in *Mamma Mia*), Cape Playhouse,

Weston Playhouse, Summer Repertory Theatre
(Nellie in *South Pacific*), and New York Musical
Theatre Festival. She also performed as Sarah
in *Guys and Dolls* with the Guangzhou Symphony
Orchestra in China. Upcoming: *South Pacific* (Nellie)
with the New Paradigm Theater and Norwalk
Orchestra. As well as being a performer, Emily is
a private vocal coach. Proud CCM graduate. [www.
EmilyKristenMorris.com](http://www.EmilyKristenMorris.com)



VINCENT ORTEGA (*Chadwick,
Policeman, Ensemble*) *Elf* marks
Vincent's 14th production here at
The Gateway after this season's *On
Your Feet*. Broadway/Tours: *Mamma
Mia*. Regional: (Piragua Guy) *In*

The Heights, (Big Paquito) *On Your Feet*, (Gomez)
Addams Family, (DJ Monty) *Saturday Night Fever*,
(Black Stash) *Peter and the Starcatcher*, (Joe)
Flashdance, (Joey) *Sister Act*, (Lord Farquaad)
Shrek, (André) *Dirty Rotten Scoundrels*, (René)
Babes in Arms (Theater Row NYC), the world
premiere of *A Wall Apart*, a new rock musical,
featuring original music by Lord Graham Russell
of Air Supply, Film/TV: *Movie 43, Enchanted, VMA's,*

AMA's, Netflix, and Disney Channel. He's had the
privilege of working with pop artists such as Ricky
Martin, Janet Jackson, Dua Lipa, Black Eyed Peas
and many more. Follow Vince on all social media @
VinceOrtega www.VincentOrtega.com



AIDAN PASSARO (*Youth Ensemble*) is
excited to be spending another holiday
season with his Gateway family!
Broadway and National Tours: *Kinky
Boots* (Young Charlie) Regional: *A
Christmas Story* (Flick, u/s performed

Ralphie), *Billy Elliot* (Small Boy), *Pricilla, Queen of
the Desert* (Benji), *Miracle on 34th Street* (Tommy),
On the Town (Ensemble). Thanks to Michael Baker,
Rachel Colson and the entire *Elf* team. Love to Mom,
Dad, Jacob, Ethan, & Jonah. Happy Holidays!



MYCHAL PHILLIPS (*Deb*) is thrilled to
return to The Gateway after having
been seen in *The Rocky Horror Show*
(Columbia), *Anything Goes* (Erma),
and *On the Town* (Lucy). National/
International tours: *Anything Goes*

(Erma), *Legally Blonde* (Paulette), *Seussical*. Other
favorites: *Singing in the Rain* (Lina Lamont- Theatre
By the Sea), *White Christmas* (Rhoda- Ogunquit
Playhouse), and *Bridgatoon* (Meg- The Wick). Thanks
to Keith, Vince, Andrew, & the awesome Gateway
team. Love to Mario & my family!



DANIEL RUBINSON (*Youth Ensemble,
u/s Michael*) is very excited and
thankful to be a part of *Elf The
Musical*! Some past credits include
Young Will in *Big Fish*, The Cat In The
Hat in *Seussical*, Paul in *A Chorus*

Line, Lucas in *The Addams Family* and many others.
Daniel participates in NYSSMA and SCMEA. He is
thrilled to be involved with this amazing production.



CLINT MADDOX THOMPSON (*Ensemble*)
is thrilled to be performing in this
brilliant production of *ELF* for the
holidays! National tour: *The Wizard
Of Oz*. Select regional: *Rodgers +
Hammerstein's Cinderella, La Cage*

Aux Folles (Chantal), *West Side Story* (Baby John),
and *Chicago* (Aaron, Ensemble). Up next: *Young
Frankenstein* at Short North Stage in Columbus,
OH. Clint is a proud graduate of Wagner College.
Love and thanks to family, friends, mentors and the
Gateway team. Social Media: @clintmthompson

REESE'S 1900 SINCE 1971



A Traditional "Old Style" Pub

Relax Before or After The Show — Full Bar & Menu

Kitchen Open 11 AM to 11 PM (Mon. thru Sat.) — Closed Sunday

70 North Ocean Avenue • Patchogue • (631) 289-1900 • www.Reeses1900.com

True Hospitality Comes to the Heart of Patchogue

Village Walk Senior Living

Discover the safety and security of 24/7 licensed care, plus exceptional hospitality services and amenities. Patchogue's assisted living and memory care community on Main Street is perfect for those who love village life.

Call (631) 503-9000 to learn more.

 **VILLAGE WALK**
A CARLISLE COMMUNITY

VILLAGEWALKSENIORLIVING.COM

131 East Main Street
Patchogue, NY 11772

Managed by  Life Care Services®





MARTY TIMLIN (*Michael Hobbs*) is 10 years old from Yaphank and is excited to return to Gateway's main stage for a 3rd time! Previous roles include *A Christmas Story the Musical* (Grover Dill) and *Beauty and the Beast*

(Chip). Recently, he was in Gateway's Conservatory Performances of *Aladdin Jr.* (Iago) and *Frozen Jr.* (Ensemble). He's extremely grateful to Michael Baker, Rachel Armitstead, Keith Andrews and The Gateway's teachers, staff and crew for their guidance. He enjoys dancing at Stage Door, and appreciates the support of Mary Giattino, Stephanie Vertichio and the rest of the studio. He also loves singing with his vocal teacher Gina Caliguri. Marty thanks his family and friends for their continued love and support!



GINA WARD (*Tiara, Ensemble, w/s Jovie*) is so excited to finally be working at The Gateway!!! They exceeded her expectations and made her heart explode with love on day 1. Gina's past credits include Stephanie in *Saturday*

Night Fever, Sophie in *Mamma Mia*, and Gertie in *Oklahoma!* She wants to thank her family for inspiring her to never give up on her dreams and the Gateway for never giving up on her.



HANNAH-JO WEISBERG (*Charlotte Dennon, Ensemble, w/s Deb*) is overjoyed to be back at The Gateway after playing Mark's mom in *Rent*. HJ is also overjoyed to be back on roller skates after skating across

the country as Frieda in *Charlie Brown Christmas Live* the past two holiday seasons. Other roles: Kristine *A Chorus Line* (Baldwin Wallace University), Pattie *Beehive* (Idaho Shakespeare Festival), and a lead vocalist with Viking Cruises. Thanks to Mom, Dad, Rachel, Michael, and Hudson Artists Agency. For KJB.

KEITH ANDREWS (*Director/Choreographer*) is so happy to be back at The Gateway with *Elf* after directing hit shows *The Bodyguard* and *On Your Feet!* earlier this season. Other shows directed at Gateway include: *Flashdance-the Musical*, *Nunsense*, *Little Shop of Horrors*, *The Rocky Horror Show*, *Rock of Ages*, *Avenue Q*, *Saturday Night Fever*, *The Addams Family*, *South Pacific*, *Spamalot*, *My Fair Lady*, *9 to 5- the Musical* (starring Sally Struthers), *The Full Monty*, *Dirty Rotten Scoundrels* (starring Joe Piscopo), *The Wedding Singer*, *My Way*, *Cold as Ice*, *Urinetown*, *2009's* and *2016's Holiday Spectacular on Ice*,

and *Happy Days*. Keith has directed the National Tours of *The Full Monty* and *Hello Muddah, Hello Fadduh* and other recent directing/choreography credits include: *The Buddy Holly Story*, *Million Dollar Quartet*, *Sister Act*, *Shrek*, *Young Frankenstein*, *The Drowsy Chaperone*, *Barnum*, *Pump Boys and Dinettes*, *The Pirates of Penzance*, *Big River*, and more! This summer, Keith directed and choreographed the Regional Premiere of *A Wall Apart* - an original rock musical about the rise and fall of the Berlin Wall, with music and lyrics by Lord Graham Russell of the Internationally acclaimed rock group, Air Supply. Keith has won three New Hampshire Theater Awards for Best Musical, Best Direction, and Best Choreography for his production of *Dirty Rotten Scoundrels*. In educational theater, Keith directed *Legally Blonde* and *Guys and Dolls* at SUNY Buffalo, and he has directed and/or choreographed over 70 student industry showcases at the American Musical and Dramatic Academy in NYC. As always, huge thanks to Paul and Michael for all their help and support putting these huge shows together, and to his favorite and most amazing team of Vince and Andrew. Keith sends holiday love to the whole Gateway family and his favorite family- his wife Amy and one year-old daughter Melody! KeithAndrewsonline.com

JAMES O. HANSEN (*Production Stage Manager*) is thrilled to be returning after *On Your Feet!* earlier this season! Recent credits include: *Cabaret* (Resident Theatre Company); *Noises Off*, *Once*, *The Importance of Being Earnest* at The Cape Playhouse; *Dirty Rotten Scoundrels* (RTC); *Beauty and the Beast* (Gateway); *Million Dollar Quartet* (Park Playhouse); *Flashdance: The Musical* (Gateway). James earned a Bachelor's Degree in Arts Management from Dean College in Franklin, MA. Many thanks to the Creative Team, Cast and Crew! Special thanks to his family for their love and support! JOHansenPSM.com

ANDREW HAILE AUSTIN (*Music Director*) is a composer, pianist, and conductor currently living in Brooklyn. After graduating from college, he moved to NYC where he worked at several arts schools while free-lancing as a conductor for many theatres and universities in the New York area. Since that time, Andrew has music directed almost 100 productions of operas and musicals across the country most recently at Virginia Music Theatre, John Engeman Theatre, Virginia Stage Company,



Prepare for later, now. Contact me for life insurance.

John Cuenin
631-758-7225
629 NY-112, Ste. 10
Patchogue, NY 11772



Allstate
You're in good hands.

Life insurance offered through Allstate Life Insurance Company and Allstate Assurance Co., 3075 Sanders Road, Northbrook, IL 60062, and American Heritage Life Insurance Co., 1776 American Heritage Life Drive, Jacksonville, FL 32224. In New York, life insurance offered through Allstate Life Insurance Co. of New York, Hauppauge, NY. © 2018 Allstate Insurance Co.

11272544



Classes
offered
for ages
3 and up!



Come make her dreams a reality

Relevé Dance Centre

33B MONTAUK HIGHWAY, BLUE POINT, NY 11715
www.relevedance.com



Ruland FUNERAL HOME, Inc.

*Proudly Supporting The Arts
That Enrich Our Lives*

475-0098

500 N. OCEAN AVE, PATCHOGUE NY 11772

Swezey

FUEL CO., INC. - EST. 1919

Suffolk's Largest Family Owned Energy Company

- Heating & Air Conditioning
- Automatic Oil Delivery Service
- 24-Hour Emergency Service
- Budget Plans that Pay You Interest
- Expert Installations of Boilers, Burners, Hot Water Heaters & Air Conditioning Equipment



475-0270

51 RIDER AVE., PATCHOGUE

and Theatre Under the Stars. As a teacher, he has taught both high school and college-age students working at several schools in NYC including the American Musical and Dramatic Academy (AMDA) and ten years at the Governor's School for the Arts in Norfolk, VA. As a composer, his works have been presented up and down the East Coast. In 2016, he was named composer-in-residence for the Tidewater Opera Initiative who presented his opera, *The Snow Maiden of Appalachia*. Andrew holds a Doctorate in composition from the Peabody Institute of Johns Hopkins University where he studied with composer Kevin Puts. This is his 15th production at Gateway, most recently music directing *On Your Feet!* and *Kinky Boots* during the 2019 season. www.andrewhaileAustin.com

JOSE SANTIAGO (*Lighting Designer*) is very excited to be back home at Gateway where he started 17 seasons ago as an Electrics Intern. Past designs include: *Anything Goes*, *Rodgers and Hammerstein's Cinderella*, *Young Frankenstein*, *White Christmas*, *Beauty and the Beast*, *Rent* (Gateway); *Mamma Mia*, *Parade*, *Working: The Musical* (Merry Go Round Playhouse); *Spamalot*, *Evita*, *Sunset Boulevard* (North Shore Music Theatre); *West Side Story*, *Wizard of Oz*, *Sister Act: The Musical* (Theatre By The Sea); *West Side Story*, *Full Monty*, *Ain't Misbehavin'*, *La Cage aux Folles*, *Man of La Mancha*, *A Funny Thing Happened...* (The Wick Theatre); *Of Mice and Men* (Bay Street Theatre); *The Drowsy Chaperone*, *Waiting for Godot*, and many dance pieces at Florida State University where he received his MFA in Lighting Design. (www.jsantiagodesign.com)

LOGAN PRATT (*Assistant Stage Manager*) Off Broadway: *Broadband*, *Arkansas*, *Strange Interlude* (Transport Group), *The Climb* (Cherry Lane Theatre). Favorite Regional credits include *The Last Five Years* (WMPAC), *The Clean House* (Williamstown Theatre Festival); *The Drowsy Chaperone*, *The Will Rogers Follies* (Goodspeed Opera House); and *Meteor Shower* (Long Wharf Theatre). Other Regional theatre credits include work with Theatre By The Sea, George Street Playhouse, Eugene O'Neill Theater Center and New Repertory Theatre. Thanks to my friends and fam! 143.

THOMAS MEEHAN (*Book*) received the Tony Award for co-writing the book for *The Producers* in 2001 and in 2003 for co-writing the book for *Hairspray*. He received his first Tony Award in 1977 for writing the book of *Annie*, which was his first Broadway show, and has written the books for the musicals *Rocky*, *Elf the Musical*, *Cry-Baby*, *Young Frankenstein*, *Chaplin*,

Bombay Dreams, *I Remember Mama*, *Ain't Broadway Grand* and *Annie Warbucks*. In addition, he was a long-time contributor of humor to *The New Yorker*, an Emmy-Award winning writer of television comedy, and a collaborator on a number of screenplays, including Mel Brooks' *Spaceballs* and *To Be Or Not To Be*. Mr. Meehan was also a member of the Council of the Dramatists Guild. He and his wife, Carolyn, divided their time between a home in Nantucket and an apartment in Greenwich Village, near which, on Hudson Street, she owned and presided over the long-running and near-legendary children's store Peanut Butter & Jane.

BOB MARTIN (*Book*) has been working as an actor and writer in Canadian theatre, film and television for over 3 decades. He has had a long association with the Toronto Second City, where he co-wrote and performed in four Second City revues, directed three, and had a stint as Artistic Director. He is a co-creator of *The Drowsy Chaperone*, and has performed in many of its incarnations including Ahmanson Theatre (Los Angeles), Marquis Theatre (Broadway), Novello (London). Bob has won a number of awards for his work including an LA Drama Critics Circle Award, an L.A. Stage Alliance Ovation Award, a Drama Desk Award, a Theatre World Award, and a Tony Award. He is also co-creator of the critically acclaimed dramatic series *Slings & Arrows*. Recent TV projects include *Michael: Tuesdays and Thursdays I & II* (CBC), *Sensitive Skin I & II* (HBO), and *Elf: Buddy's Musical Christmas* (NBC). Recent theatre projects include *Elf* (Broadway), *Minsky's* (Ahmanson LA), and in dev., *Gotta Dance*, *The Sting*, and *Millions*. Bob reunited with *Elf* collaborators Matthew Sklar and Chad Beguelin to create the new musical *The Prom*, which ran on Broadway at the Longacre Theatre and was nominated for seven Tony Awards, including Best Musical.

MATTHEW SKLAR (*Music*) is a Tony®, Emmy®, and Drama Desk Award-nominated composer. His works include the Broadway musicals *Elf* and *The Wedding Singer* (Tony Award Nomination for Best Original Score, Drama Desk Award Nomination for Outstanding Music). He also wrote the music for *The Rhythm Club* (Signature Theatre), *Judas & Me*, and *Wicked City* (American Stage Company). Matthew

reunited with *Elf* collaborators Chad Beguelin and Bob Martin to create the new musical *The Prom*, which ran on Broadway at the Longacre Theatre and was nominated for seven Tony Awards, including Best Musical. Matthew received a 2015 Primetime Emmy® Award Nomination for Outstanding Music Direction for the critically-acclaimed NBC stop-motion animated TV special “*Elf: Buddy’s Musical Christmas*”, starring Jim Parsons. He adapted and arranged the music of Marvin Hamlisch for the Emmy Award-winning documentary film *Marvin Hamlisch: What He Did For Love*, seen on PBS/American Masters. Matthew has contributed original songs/music to *Sesame Street*, *Wonder Pets!*, and the NBC Broadcast of The Macy’s Thanksgiving Day Parade. As an 18-year-old freshman at New York University, Matthew began playing keyboards for the Broadway production of *Les Miserables*, eventually conducting the show at 21. He has also been a keyboardist, conductor, and/or arranger for many Broadway productions including *Shrek*, *Caroline, or Change*, *Nine*, *Oklahoma*, *42nd Street*, *Putting It Together*, *Annie Get Your Gun*, *On the Town*, *Titanic*, *Guys and Dolls*, *Sunset Boulevard*, and *Miss Saigon*. Matthew also appeared onstage as Oscar in the Broadway revival of *42nd Street*. Awards include the ASCAP Richard Rodgers New Horizons Award, the Gilman/Gonzalez-Falla Theatre Award, and the Jonathan Larson Performing Arts Foundation Award. Matthew is a proud member of the Dramatists Guild, ASCAP, and the American Federation of Musicians, Local 802. His music is published by Warner/Chappell Music. Matthew was educated at The Juilliard School of Music (Pre-College Division), the Boston University Tanglewood Institute, and New York University.

CHAD BEGUELIN (*Lyrics*) is a four-time Tony Nominee whose works include *Disney’s Aladdin* (Tony Award Nomination for Best Book and Best Original Score, Drama Desk Award Nomination for Outstanding Lyrics and Best Book) and *The Wedding Singer* (Tony Award Nomination for Best Book and Best Original Score, Drama Desk Award Nomination for Outstanding Lyrics). He also wrote the lyrics for the Broadway musical *Elf*, which broke several box office records at the Al Hirschfeld Theatre. His play *HARBOR* premiered off-Broadway at Primary Stages. Chad also wrote the book and lyrics for *Judas & Me* (NYMF Award for Excellence in Lyric Writing), *The Rhythm Club* (Signature Theater) and *Wicked City* (American Stage Company). Chad reunited with *Elf* collaborators Matthew Sklar and Bob Martin to create the new musical *The Prom*, which ran on Broadway at the Longacre Theatre and was nominated for seven Tony Awards, including Best Musical. He is the recipient of the Edward Kleban Award for Outstanding Lyric Writing, the Jonathan Larson Performing Arts Foundation Award, the Gilman & Gonzalez-Falla Musical Theater Award and the ASCAP Foundation Richard Rodgers New Horizons Award. Chad is a graduate of New York University’s Tisch School of the Arts Graduate Dramatic Writing Program.

MUSIC THEATRE INTERNATIONAL (MTI) is one of the world’s leading theatrical licensing agencies, granting schools as well as amateur and professional theatres from around the world the rights to perform the largest selection of great musicals from Broadway and beyond. MTI works directly with the composers, lyricists and book writers of these shows to provide official scripts, musical materials and dynamic theatrical resources to over 60,000 theatrical organizations in the US and in over 60 countries worldwide.

check out this
SWEET GIFT
from searles

A whole new way to get your message out there!

Text SWEET to (631) 714-2063
to find out what text marketing can do for your business.

SEARLES GRAPHICS
EST. 1984

CONTRIBUTE TO THE FUTURE OF THE ARTS

We invite you to lend your support and become a bigger part of our performing arts family.

★ **STAR BILLING**
\$25,000 +

★ **LEADING PLAYER**
\$15,000 +

★ **PRINCIPAL ROLE**
\$5,000 +

★ **DIRECTOR'S CIRCLE**
\$2,500 +

★ **FRONT ROW VIP**
\$1,000 +

★ **BACKSTAGE PASS**
\$500 +

★ **CAST MEMBER**
\$250 +

★ **STAGE HAND**
\$100 +

★ **FAN CLUB**
\$50 +

GO TO THEGATEWAY.ORG AND CLICK ON SUPPORT OR CALL (631) 286-7027 FOR MORE INFORMATION

The Performing Arts Center of Suffolk County is a 501(c)3 non-profit organization – all donations are 100% tax-deductible. Thank you for your contribution to the future of the arts!

To adjust the way your name is listed here, please email Scot@TheGateway.org or call **631-286-7027**.

BOARD MEMBERS

Paul Allan
Gale Edwards
Diane Giattino
Jim Martinsen
Lisa Meyer-Fertal
Ann Nowak
Ken Searles
Terry Tuthill

STAR BILLING

AARP
Ingrid Arneberg and Will Marin
Boykin Curry
The Dooner Rockwell Charitable Trust
The Knapp Swezey Foundation
Suffolk County Economic Development Council

LEADING PLAYER

County of Suffolk Cultural Arts
The Kana Family
Isabella Rossellini

PRINCIPAL ROLE

Thomas Gavin
Cecile Defforey
New York State Council on the Arts

DIRECTORS CIRCLE

Cullen and Danowski, LLP
Maggio Environmental, LLC
Town of Brookhaven IDA
Frank and Ginny Palamara
William J. O'neill
Sales Exchange Inc

FRONT ROW VIP

Susan Belcher, Belle Shear Salon
Mrs. Joanne Bennett
Cheryl A. Felice and Lorraine Kuehn
Flanzer Construction
Phil and Debbie Grucci - Grucci Fireworks
HSBC Bank
Dave and Debbie Morrissey
Phylis Natoli and Debbie-Ann Chang

Bob and Pamela Rosenberg
Selma Rothstein
The Schiffer Family Foundation
Cathy Siegel and Ken Weiss
South Country Lions Club
Frank and Marie Trotta

BACKSTAGE PASS

Teresa Abramowski and Everett Och
Carolos Balcarcel
Myrna Basile
Painter's Restaurant
Susan Benincasa
Donald Bernstein
Alison Buck and Rob Wegener
Barry Buckland
Dominic and Patricia Cassella
Estella and Robert Clasen
Ellen Clyne
Mary Lou Cohalan
Thomas and Sara Jane Corwin
John Shea Jr. and Diane Crean
John and Erna Cuenin
Gloria Cummings
John Dacey
Jeff Davies and Michael Mizrahi
Charles and Linda Desjardin
Fiori Enterprises
Judy Fortuna-Ince and Peter Ince
Kenneth Gobright
Steve Hayden and Kristy Allen
Merri and Joey Italiano
Susan Kahl and Jim Vaughan
Vincent and Linda Leuzzi
Ann Marie and Gary Loesch
Jane Love
Gloria Mancuso and Glenn Dielmann
Pat Mankowski
Joe and Tricia Manno
Glenn and Louise Mehrtens
Steve Mercurio
Joy Mooney
Michael and Hwasoon Mullaney

Laura Orofino
The Sparklers
Maria Pierce
Patricia Polak
Karen Ritter
Jean-Marie and
Selima Salau
George and Robin Smith
Judith Steinberg
Bill Stonehouse
Candace Leeds and
Jay H. Tanenbaum
Susan and
Magnus Thorstenn
David Tobachnik and
Alice Anne Humphrey
Maureen Veitch

CAST MEMBER

Bill Allan and
Mary Lou Maloney
Dr. and Mrs. Chantal and
Richard Berman
Music Theatre International
John and Loree Bowcock
Fred Bowman
Robert Budd
Browns Automotive
Dr. Kym Carpentieri and
Mr. Mike Eller
Jean Coakley
Tom Connelly
Mary Jane and
Brian Cullen
Thomas Derby
Alexandra Diamond
Margaret Esposito
Ken and Tami Fehling
Fran and Laurie Fosmire
Stephen Fuoco
Mary Giattino
Ada Graham
Ed Graziano and
Doug Carabe
Michael Hartzman
Judith Hope
Chris Kraras
Robert Koenig
Harris Lefkon
Jeffrey Leibowitz, Atlantic
Agency Insurance and
Risk Management
Ann Marie and
Gary Loesch
Lane Love

Margie K Ludewig
Craig Morrison
Renee Negron
NextGen Advertising
Bob and Kathe Palermo
Kim Poppiti
June Potter
Ann and Bob Quinn
Sandy Reifel
Kevin Rienecker
William Rignola
Barbara and Eric Russo
and Family
Brian Smith
John Stanley
Suffolk Federal
Credit Union
Janet and John Taylor
Lorelei Tuthill
Bob and LouAnn Tuzza
Joseph and Patricia
Van De Wetering
Fred and Marna Varney
Virginia Waterman
Allen and Angela Welcome
Graham Williams

STAGE HAND

Steven and Madelon Alter
Carol Campbell
South Country Lions Club
Mary Lou Cohalan
Kathy and Tom Cullen
Nick and Julia Fasano
Scot Ferrara
Katie Ford-Mehrkens
The Gergel Family
Allene Goldberg
Felix and Madeline Gucci
Joyce Hanly
Peter Hanratty
Sally Harris
Timothy and
Laura Hawryluk
Jean Heblch
DiGrace Hoiland
Richard Hoshino
Robert K. Irish
Janice F. Klein
Susanna Klein
Vasili Kreatsoulas
Marilyn Hamilton and
Joseph LaGennusa
Ann Lucas
Gail Mancuso

Mr. and Mrs. Mazzella
Katie Ford-Mehrkens
J. Signs Inc.
Emily Morton
Harriet Moser
Suzanne Niemeyer
Kevin and Joy O'Brien
Ann and Bill O'Shea
Richard and
Ruth Anne Otterstedt
Jeanette Paolillo
Lynn and Joe Pessalano
Paul Pohorelec
Jean Pokorny
Anthony and
Rachelle Psaris
Edwin and Joan
Schultheis
Stephanie Schurmann
Patricia Sikorski
Donald Steckler
Linda Tabatchnik
Laura Terwilliger
Susan and
Magnus Thorstenn
Lorelei Tuthill
George and Nancy Tvelia
Nancy and
Roy Vaillancourt
Thomas Vitale
Cindi and Robert Wellins
Patchogue/Medford
Youth Services

FAN CLUB

Bisagni Family
Mrs. Marilyn Munson
Leonard and Eileen Astrin
Jean Austin
Mr. and Mrs. Jeff Bellante
Mrs. Janet Braun
Maureen Campanelli
Tom and Beverly Carbone
June Cardenas
Shelley Case
Shana and Joseph Conza
The Cotter Family
John and Erna Cuenin
Margaret Culhane
Kathie Davis
Mr. Glenn Dielmann
Heather Donahue
Tim Edwards
Wendy and Roy Erlandson
Dan Fink

Patricia Flynn
Mr. and Mrs. Philip
Gambino
Joseph and
Maryellen Gathard
Michael Hartzman
Jean Heblch
Kathy Scheverman
and Friends
Susan Karas
Joan Didio Kinsella
David and
Peggy Kulakowski
C. Lipnicki
Todd Marra
Angela Marshall
Susan Masciello
Mr. and Mrs. Daniel G.
McConnell
Gregory Miglino
John E. Morris
Barbara Navetta
Dr. Mary Koslap-Petraco
Barbara Porcella
Don Rebar
Christine Rupolo
Andrew and
Jennifer Setzer
Mary Ellen Smith
Richard and
Denise Strothman
Patricia Tarasenko
Stephanie Verticchio
Melinda K. Warner
Melissa and
Keith Wasylshyn
Mary Ellen Weber
Irwin and Susan Wein
William and
Janet Wroblewski
Chuck and
Karen Zahradka

All names listed reflect
FY 2019 donations

PERFORMING ARTS CENTER OF SUFFOLK COUNTY

BOARD OF DIRECTORS

Chair	Diane Giattino	Directors	Paul Allan, Jim Martinsen,
Vice-Chair	Ken Searles		Ann L. Nowak, Terry Tuthill
Secretary/Treasurer	Gale Edwards		

ADMINISTRATIVE

Executive Artistic Director	Paul Allan
Director of Business Operations	Jeff Bellante
HR/Payroll	Gale Edwards
Director of Development/ Public Relations	Scot Patrick Allan
Accounts Payable/Bookkeeping	Janet Caponi
Guest Services	Tim Cole

ARTISTIC STAFF

Director/Choreographer	Keith Andrews
Associate Director/Co-Choreographer	Vincent Ortega
Music Director	Andrew Haile Austin
Lighting Designer	Jose Santiago
Sound Designer	Don Hanna
Set Designer	Jason Sherwood
Projection/Media Designer	Jason Lee Courson
Costume Designer	Colleen Grady
Wig Designer	Bobbie Zlotnik
Costume Coordinators	Dustin Cross, Monica Lynch
Asst. Casting Director	Rachel Armitstead
Musical Contractor	Peter Pece
Production Photographer	Jeff Bellante

FACILITIES

Facilities & Concessions Manager	Blake Armitstead
Cleaning Staff	Jasper Bailey
House Staff	David Bellante, Ralph Bianco, Meghan Fawcett, Kerri Johnson, Joe Kraus, Aaron Legros, Tim Montick, Jake Mulle, Alex Pardo, Danny Parr, Savanah Ruiz, Will Russel, Lukas Varacek
Grounds Maintenance	HTM Landscaping Company
General Counsel	Ann L. Nowak

EDUCATION

Education Director	Michael Baker
Acting School Manager	Rachel Armitstead
Conservatory Stage Manager	Katharine Mucke
Teaching Staff	Kaitlyn LaGrega, Joseph Minutillo, Megan Minutillo, Jessica Norland, Rich Walker, Amy Woschnik
Accompanists	Peter Pece, Anthony Vetere

PRODUCTION

Production Manager	Brian Loesch
Production Stage Manager	James O. Hansen
Rentals Manager/ Asst Production Manager	Tony Tambasco
Technical Director	Brandon Cheney
Master Electrician	Riley Noble
Sound Engineer	Gerlando Volpe
Costume Shop Manager	Janine Loesch
Video Programmer/ Asst Master Electrician	William Milligan
Prop Master	Mitch Domer
Wig Master	Tatiana Urusow
Automation System	John Sabo
Assistant Stage Manager	Kathrine Mucke, Logan Pratt
Assistant Technical Director	John-Paul Baker
Shop Foreman	Michele Ponton
Scenic Charge	Tracie VanLaw
Assistant Prop Master	Megan McQueeney
Costume Shop Assistant	Rachel Allison
Sound Assistant	Jessica Hawkins
Staff Electrician .. James Blydenburgh, Felina Sutterfield	
Carpenters	Nathan Clark, Landon Ferrell, Kyle McCants, Imani McCants, Breanna McNeal, Savannah Parker, Louis Perrotta
Wardrobe/Wig Staff	Kayla Molzon

APPRENTICES

Electrics Apprentice	Jessica Cuoghi
Stage Management Apprentice	Courtney Wigderson
Wardrobe Apprentice	Zoe Brantley

BOX OFFICE

Box Office Manager/Group Sales	Laurie Cole
House Manager/Group Sales	Joanne Tambasco
Assistant House Manager	Abby Beodeker
Box Office Staff	Judy Bianco, Cooper Cannizzaro, Janet Caponi, Phyllis Kaye, Tina Realmuto

**More than 180
pediatric specialists.**

All private rooms.

**Thousands
of colorful fish.**



THE NEW STONY BROOK CHILDREN'S HOSPITAL IS NOW OPEN.

Live-streaming views from the Long Island Aquarium. All single-patient rooms, where kids control the lighting. An entirely child-friendly environment, which research has shown promotes better outcomes for kids. It's a facility filled with advancements, purposefully designed to deliver the very best in pediatric care. As Long Island's only children's teaching hospital, we offer unmatched capabilities to handle nearly any type of medical condition affecting kids. We're new. We're world class. And we're here for you.



**Stony Brook
Children's**

The best ideas in medicine for kids.

Part of Stony Brook Medicine | stonybrookchildrens.org

Stony Brook University/SUNY is an affirmative action, equal opportunity educator and employer. 19100657H

PORTERS

on the lane

COCKTAILS  RESTAURANT  CATERING



FOR RESERVATIONS *or* MORE INFO CONTACT US

phone ✦ 631 — 803 — 6067

email ⚓ portersbellport@aol.com

NEW MENUS - SPECIALS - MUSIC - UPCOMING EVENTS

SUMMER HOURS  MORE VISIT ...

website ⚙ www.portersonthelane.com

Address - 19 Bellport Lane Bellport Village NY 11713

SOMETHING SWEET FROM ACROSS THE STREET

Carla Marla's

ICE CREAM PARLOR & CANDY SHOP



one free topping w/ this coupon

CALL: 631-803-6630

email: carlamarlas@hotmail.com

8 BELLPORT LANE, BELLPORT VILLAGE, NY 11713