

THE **30**TH
Gateway
ANNIVERSARY

**FORBIDDEN
BROADWAY**



June 5 - 22
2019

A Healthy Heartbeat

Andante moderato. $\text{♩} = 60-100$ Music from the Heart

Heart

The image shows a musical score for a piece titled "A Healthy Heartbeat". The score is written on a single staff in treble clef with a 3/4 time signature. The tempo is marked "Andante moderato" with a metronome marking of 60-100 beats per minute. The music consists of a series of eighth and sixteenth notes, creating a steady, rhythmic pattern. The score is divided into six measures, each with a fermata at the end. The word "Heart" is written to the left of the first measure. The score is printed on aged, slightly yellowed paper.

A healthy heartbeat is our favorite song.

NOTHING SOUNDS BETTER THAN A HEALTHY HEART. But when a heart develops an arrhythmia, causing it to beat too weakly, too fast or just irregularly, it can cause more than discord. It can endanger your life. That's why the electrophysiologists at the Stony Brook Heart Rhythm Center use the most advanced 3D mapping technology to locate the precise heart tissue causing the problem. So our team can perform accurate ablation procedures on even the most complex arrhythmias. And your heart can sound like music to your ears.

For more ideas, visit
heart.stonybrookmedicine.edu



Stony Brook Heart Institute

The best ideas in medicine.



PAINTERS'
Restaurant

JOIN US FOR
BRUNCH LUNCH DINNER

.....
Serving Brunch Saturday & Sunday
11am - 4pm
.....

FOR CATERED
EVENTS

CALL OUR CATERING DIRECTOR
ZACH 631.923.8860

2 MILES EAST OF GATEWAY PLAYHOUSE
416 SOUTH COUNTRY RD. BROOKHAVEN, NY 11719

631-803-8593

PORTERS

on the lane

COCKTAILS  RESTAURANT  CATERING



FOR RESERVATIONS *or* MORE INFO CONTACT US

phone ✦ 631 — 803 — 6067

email ⚓ portersbellport@aol.com

NEW MENUS - SPECIALS - MUSIC - UPCOMING EVENTS

SUMMER HOURS *AND* MORE VISIT ...

website ⚙ www.portersonthelane.com

Address - 19 Bellport Lane Bellport Village NY 11713

SOMETHING SWEET FROM ACROSS THE STREET

Carla Marla's

ICE CREAM PARLOR & CANDY SHOP



one free topping w/ this coupon

CALL: 631-803-6630

email: carlamarlas@hotmail.com

8 BELLPORT LANE, BELLPORT VILLAGE, NY 11713

Listen to Lawrence!

*...and learn how to plan
the RIGHT way.*

FREE SEMINAR!

- Learn how to protect your assets from the high costs of Long Term Care
- Learn how to protect the money you leave to your children from their divorce
- Learn how to protect your children's inheritance from creditors, taxes and their own poor judgment

This informative program is FREE, but reservations are required.

Call 631-234-3030 or go online at: www.davidowlaw.com to find an upcoming seminar in your area!



Lawrence Eric Davidow
Senior and Managing Partner
**DAVIDOW, DAVIDOW
SIEGEL & STERN, LLP**
LONG ISLAND'S ELDER LAW,
SPECIAL NEEDS
AND ESTATE PLANNING FIRM



DAVIDOW, DAVIDOW, SIEGEL & STERN, LLP

Original Firm Founded 1913

Long Island's Elder Law, Special Needs and Estate Planning Firm

1050 Old Nichols Road - Suite 100, Islandia, New York 11749 | Tel. (631)234-3030

www.davidowlaw.com

Additional office locations: Garden City | Mattituck



69 years of shows are behind us and here we are at show number two of our 70th anniversary summer season. Dozens of amazing productions have been put together on these grounds as each cast, crew and creative team has gone through the incredible process of mounting each one in just over two weeks.

This time it's *Forbidden Broadway*, and although we have done several different versions of this show in previous seasons, this time we are honored to have Mr. Gerard Alessandrini as our Director. Gerard is the creative genius behind the show, and came up with the zany idea in the early 80's. See the article on page 33 for more information. The show ran in NYC for over 30 years – probably because Gerard kept adding material as new shows opened and others closed. For this production, Gerrard has added a brand-new number roasting several very new shows – one that has only been open on Broadway for just over a month. See if you can figure out which one!

And there is a lot more in store this summer: The spectacular Long Island premiere of - *The Bodyguard*, starring Kimber Sprawl. The show is based on the iconic film and features all those hit songs made famous by Whitney Houston. Next will be the fan favorite, *The Sound of Music*, which will be directed by Broadway legend Mitzi Hamilton. Finishing up our summer season at Patchogue Theater, the much anticipated – *Kinky Boots*. For the kids, we've got great shows all summer including *Frozen* and *Aladdin Jr.*, and for music fans we've got summer concerts on select nights. Make sure you are on our email list and stay in touch in whatever way works best for you – text alerts, social media etc. we love to hear from you!

I want to thank you for being here tonight and I invite you to be part of our 70th anniversary celebration on June 28th at Sunset Harbor. It will be an evening of music, dance and joy as we celebrate and honor the past and look forward to the future.

Sincerely,

A handwritten signature in black ink that reads "Paul Allan".

Paul Allan
Executive Artistic Director

THE BRISTAL ASSISTED LIVING • WHERE EVERY DAY MEANS MORE®

EXPERIENCE THE DIFFERENCE EXPERIENCE THE BRISTAL



Photos: Bistro, The Bristal at Holtsville; Dining Room & Game Room, The Bristal at Sayville

The Bristal[®]
ASSISTED LIVING

Call Us Today to Schedule Your Visit

HOLTSVILLE | 5535 Expressway Drive North | (631) 828.3600

SAYVILLE | 129 Lakeland Avenue | (631) 563.1160

thebristal.com



Licensed by the New York State Dept of Health • Eligible for Most Long Term Care Policies
Equal Housing Opportunity • Quality Communities by The Engel Burman Group



FROM BUSINESSES ON MAIN STREET TO YOUR FRIENDS DOWN THE STREET

Working **TOGETHER**
sets us apart.

Proud Supporter of
Gateway Performing
Arts Center



With community banking from Montauk to Manhattan, BNB Bank is committed to keeping neighborhoods strong. One of New York's fastest growing community banks, BNB works with our neighbors to help others in need – so together, we all succeed.



Member FDIC

COMMUNITY BANKING FROM MONTAUK TO MANHATTAN

631.537.1000 | WWW.BNBBANK.COM





Presents

FORBIDDEN BROADWAY

Created, Written, and Originally Directed by
GERARD ALESSANDRINI

Starring

CHRIS COLLINS-PISANO BILL COYNE MIA GENTILE KERI SAFRAN

Executive Artistic Director
PAUL ALLAN

Production Manager
BRIAN LOESCH

Director of Business Operations
JEFF BELLANTE

Associate Artistic Director
MICHAEL BAKER

Production Stage Manager
SPENCER CLOUSE

Lighting Designer
BRIAN LOESCH

Director of Development
SCOT ALLAN

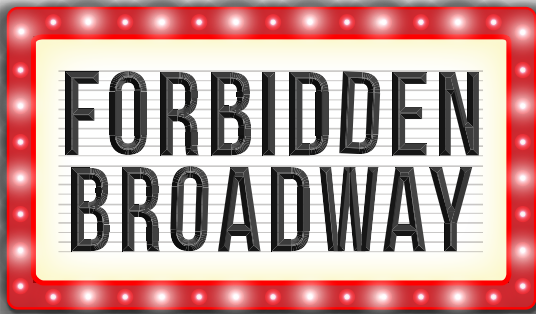
Set Design
MICHAEL BOYER

Scenic Coordinator
BRITTANY LOESCH

Musical Director
ROBERT FELSTEIN

Associate Director
WILLIAM SELBY

Director
GERARD ALESSANDRINI



THE CAST

CHRIS Chris Collins-Pisano*

BILL Bill Coyne*

MIA Mia Gentile*

KERRI Keri Safran*

PIANIST Robert Felstein

PRODUCTION STAGE MANAGER Spencer Clouse*

ASST. STAGE MANAGER Elise Jenkins*

UNDERSTUDIES

FEMALE PERFORMERS Jessica Norland Baker, Emily Esposito

MALE PERFORMERS Scot Patrick Allan*, Michael Edward Baker*



*Actors employed in this production are members of Actors' Equity Association, the union of Professional Actors and Stage Managers in the United States.



The Musicians employed in this production are members of the American Federation of Musicians.



The Director/Choreographer is a member of the Society of Stage Directors and Choreographers, Inc., an independent national labor union.

Stellar performances start here.

Be Ready.

St. Joseph's College offers innovative academic programs developed by top industry leaders and a rich, vibrant campus life to prepare today's students to take center stage as tomorrow's leaders.

FIND OUT MORE

sjcny.edu

631.687.5100

St. Joseph's
College
NEW YORK



Ready. Set. Joe's®

LONG ISLAND • BROOKLYN • ONLINE

SCENES and MUSICAL NUMBERS

ACT I

FORBIDDEN BROADWAY	Company
CHICAGO	Keri, Bill, Chris
AMERICA'S FAVORITE ORPHAN	Mia
CAMERON MACINTOSH	Chris
MAMMA MIA	Keri and Company
YA GOTTA GET A PUPPET	Bill, Keri, Chris
CHITA AND RITA	Mia, Keri
HUGH JACKMAN	Bill
EVAN HANSEN	Chris, Mia
MARY POPPINS	Keri
JERSEY BOYS	Mia, Bill, Chris
BERNADETTE PETERS	Keri
ITS GOT TO BE A MUSICAL (BEATLEJUICE, TOOTSIE, & MORE)	Company
FROZEN	Mia
PATTI LUPONE	Keri
LES MISERABLE SEGMENT:	
C'EST MAGNIFIQUE	Mia
END OF THE PLAY	Keri, Bill, Chris
GOD IT'S HIGH	Chris
ONE TOUR MORE	Company

ACT II

LION KING (RAFREAKY)	Chris, Mia, Keri
LION KING (CAN YOU FEEL THE PAIN TONIGHT).....	Bill, Keri
PHANTOM OF THE OPERA & ETHEL MERMAN	Chris, Mia
BARBRA STREISAND	Keri
LIN-MANUEL MIRANDA AS HAMILTON.....	Bill, Mia, Chris
JULIE ANDREWS	Keri
CABARET-WILLKOMMEN	Bill
LIZA MINELLI	Mia
BOOK OF MORONS	Chris, Bill
WICKED	Keri, Mia, Company
CATS	Bill
FIDDLER ON THE ROOF	Company
ENCORE:TA TA FOLKS	Company

NOW ACCEPTING MEMBERS FOR THE

2018 SEASON



BELLPORT GOLF CLUB

20 South Country Road | Bellport, New York 11713 | 631-286-7206 | jimmy@bellportgolfclub.com

www.bellportgolfclub.com



ROYAL OAK DINER

BREAKFAST, LUNCH &
DINNER DAILY

Complete Early Bird Dinners • 3:00-5:45pm

Complete Dinner Specials

Lunch Specials Daily • 11:00am-3:00pm

Sun-Thurs 6:30am-10pm • Fri 6:30am-11pm
Sat 6:30am-midnight

900 Station Road, Bellport

631-286-5757



THE BELLPORT

Steps away from the Gateway Playhouse

★★★★

New York Times Review

159 South Country Road, Bellport, New York 11713

(631) 286-7550 | www.bellport.com/thebellport

TOLA.

A SMALL TOWN BOUTIQUE WITH A BIG TIME VIBE

CLOTHING, GIFTS & JEWELRY

HARBOR WALK ★ FIRE ISLAND PINES

MAIN STREET ★ BELLPORT VILLAGE

136 SOUTH COUNTRY ROAD

@TOLANEYORK

(631) 286-0186

TOLANEYORK@GMAIL.COM

(631) 597-5525



**Your Trusted Reverse
Mortgage Expert**



Patricia Whitlock, CRMP®

631-873-8277

NMLS#64560

Disclaimer: Loans are subject to approval. Additional eligibility requirements, terms, conditions, fees & exclusions apply. *Quontic Bank is not affiliated with or acting on behalf of the Federal Housing Authority (FHA) or any government agency or government sponsored entity. Quontic Bank, 31-05 Broadway Astoria, NY 11106 NMLS ID: 403503 800-908-6600. Quontic Bank is a federally registered service mark owned by Quontic Bank Holdings Corp.



www.papanickspizzeria.com

Home of the Crispy Crust • Daily Specials

631-286-6400

117C South Country Road | Bellport Village

**DON'T LET PAIN
Interfere With Your Life!**



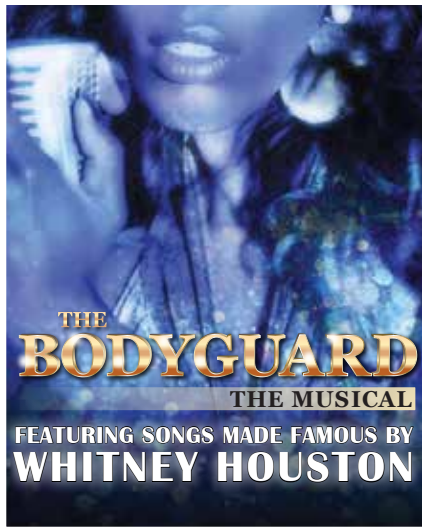
DR. JOSEPH R. MERCKLING

Providing Relief for: Postural Problems
and Pregnancy Related Back Pain
We use Rock Tape Kinesio-Tape
Neck and Back Pain | Headaches
TMJ Pain | Sciatica | Scoliosis

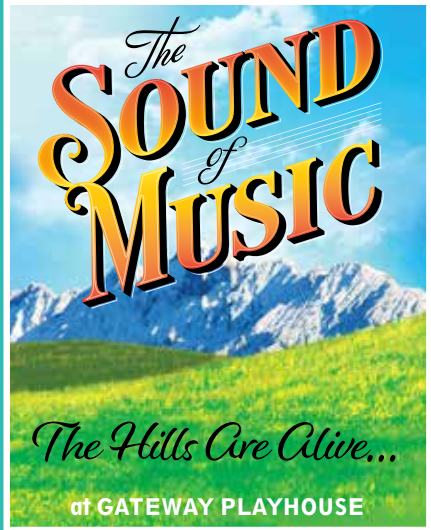
Merckling Family Chiropractic, P.C.

16 Station Road, Suite 2, Bellport Village

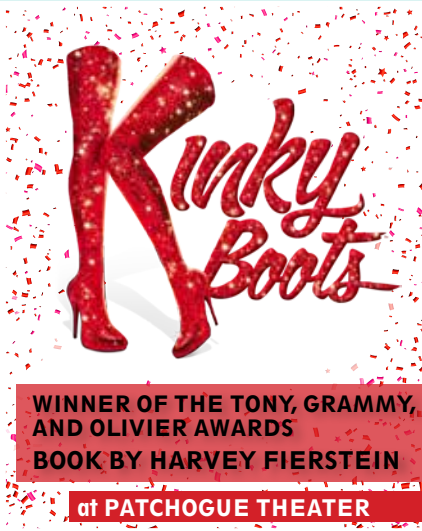
631-286-2300 | www.mercklingdc.com



JUL 3 - 20



JUL 31 - AUG 17



AUG 28 - SEP 14



DEC 20 - 28

GATEWAY'S **2019** SEASON
THEGATEWAY.ORG • 631.286.1133

CHILDREN'S THEATER

FUN FOR THE WHOLE FAMILY, TICKETS START AT \$15!



**JEFF ROYER'S
★ BIG
★ BUBBLE
★ BONANZA**

JULY 5 - 6 • 11am
at GATEWAY PLAYHOUSE



DINOSAURS

JULY 27 • 11am
at GATEWAY PLAYHOUSE



THE AMAZING MAX

AUGUST 2
11am & 1:30pm
at GATEWAY PLAYHOUSE

OFF-BROADWAY ILLEGIBILITY

GATEWAY'S SCHOOL FOR THE PERFORMING ARTS PRODUCTION OF



**Disney
Aladdin JR.**

JULY 12 & 19 • 11am & 2pm / JULY 13 & 20 • 11am
at GATEWAY PLAYHOUSE

GATEWAY'S SCHOOL FOR THE PERFORMING ARTS PRODUCTION OF



**Disney
FROZEN JR.**

AUGUST 9, 16 & 23 • 11am & 2pm
AUGUST 10, 17 & 24 • 11am / AUGUST 18 • 2pm
at GATEWAY PLAYHOUSE



**CONGRATULATIONS
HALLE, HUNTER,
JOHN, AND OLIVIA,
NOW APPEARING IN
ON YOUR FEET!**

**THE Gateway
SCHOOL FOR THE
PERFORMING
ARTS**

Be on stage!

LEARN, LAUGH, SHINE!

ACTING CLASSES FOR ALL AGES

NOW ENROLLING
TECHNIQUE • MUSICAL THEATRE • PRODUCTION

TO LEARN MORE ABOUT GATEWAY SCHOOL FOR THE PERFORMING ARTS
EMAIL ACTINGSCHOOL@THEGATEWAY.ORG OR CALL (631) 286-0555, EXT 5000



Patchogue Family Dental, PC

WHERE PATIENTS BECOME FAMILY

**General Dentistry and
Cosmetic Dentistry**

Orthodontics

Implants • Botox

2 LOCATIONS

**East Quogue
631-653-5888**

**East Patchogue
631-475-1191**

Please visit our website for complete services



CHRIS COLLINS-PISANO is so glad he wasn't forbidden from returning to Gateway after playing Jimmy in *Flashdance* last summer! Nat'l Tour: *Elf* (NETworks '18). Off-Broadway: *Friends! The Musical Parody* (St. Luke's Theater). Regional: *Barnum* (Skyline Theatre Co.), *Grease* (Engeman Theater), *The 39 Steps* (N.L. Barn Playhouse). Proud Bearcat. So much love and thanks to the cast and crew of *Forbidden Broadway*, Gateway, The Justice League, MT '16, and the Collins-Pisano Clan.



BILL COYNE is thrilled to be at The Gateway, re-uniting with Gerard after appearing in *Madame X* at the NYMF. Bill played diva porn-star Lance Minx on last season of HBO's *The Deuce*; and was recently seen on NBC's *The Enemy Within*. (Off-Broadway) *The Brightness of Heaven* (The Cherry Lane Theatre), *Greed* (New World Stages), *The Merchant of Venice* (The Judson Gym), Abner in *L'il Abner* and Byron Prong in *Fade Out/Fade In* (Theatre Row). Frequently involved in the development of new work, Bill created *MUSEMATCH: A Musical Theater Blind Date*, a charity concert series that has created over 200 new collaborations and songs to date while benefiting communities in need. Thank you to my family, Hudson Artists Agency and all of my collaborators. @billcoynespeaks www.billcoynespeaks.com



MIA GENTILE was most recently seen in *Kinky Boots* on Broadway (ensemble/ u/s Lauren). She is thrilled to be returning to *Forbidden Broadway* after her wild and irreverent run in *Forbidden Broadway: Comes Out Swinging!* in New York. Mia was interviewed on Good Morning America for her viral YouTube video The Stanley Steamer Variations. She has also been heard in concert with the Portland Symphony Orchestra and the Winston-Salem Symphony singing the songs of Rent, La Boheme, and Moulin Rouge under conductor Robert Moody. Her favorite roles include Millie in *Thoroughly Modern Millie*, Natalie in *Next to Normal*, and Maureen in *Rent*.



KERI SAFRAN has wanted to do *Forbidden Broadway* her entire life & is thrilled to be working with writer/director Gerard Alessandrini. Recent credits: *Typhoid Mary* & *10x10* New Play Festival (Barrington Stage, dirs. Julie Boyd & Matt Penn); Lina Lamont/*Singin' in the Rain* (Zach Theatre); *City of Light* (Connelly Theatre, dir. Cady Huffman, opposite Valarie Pettiford); the titular canine in *Sylvia* (Flat Rock Playhouse); and multiple workshops of *Stu For Silverton* (dir. Andrew Russell) a new musical about the first transgender mayor elected in America. TV/Film: *Imaginary Order* (Sundance 2019); *Richard Linklater's \$5.15/hr*, *The Blacklist*, *The Real O'Neals*, *HIMYM*, *Ray Donovan*, et al. Groundlings Sunday Company alum; Antaeus Classical Theater Member; Dialect Coach. www.kerisafran.com; @kerisafran.

GERARD ALESSANDRINI (Writer & Director) is a Tony Award winner for "Excellence in Theater." Besides *Forbidden Broadway*, Gerard is the creator/ writer/ director of *Spamilton: An American Parody*, of you know what. *Spamilton* enjoyed a successful run in New York, Los Angeles, Chicago and London and is currently touring all major U.S. cities. Gerard is also well known for writing and directing all the editions of *Forbidden Broadway* and *Forbidden Hollywood* which has spawned over 20 editions, 13 Cast Albums and a 30 year run in New York. Gerard was also a member of the original 1982 cast of *Forbidden Broadway*. Television & recording credits include writing Comedy Specials for Bob Hope and Angela Lansbury on NBC, Carol Burnett on CBS, and Special lyrics for Barbra Streisand for her 2016 album, *Duets Encore*. As a performer, Gerard can be heard on the *Forbidden Broadway* cast albums, on the soundtracks of Disney's animated classics *Aladdin* and *Pocahontas*. Directing credits include *Madame X-The Musical* at NYMF (which he co-wrote with Robert Hetzel) a new production of Maury Yeston's musical *In the Beginning* and most recently *Anything Can Happen In The Theater*: a new revue of the music

INTRODUCING LONG ISLAND'S FIRST TeliStat™ Restorative Care Unit

Brookhaven Health Care Facility is pleased to introduce a state-of-the-art **CARDIAC MONITORING UNIT**. The concept and associated proprietary technology was developed by Dr. Anthony Bacchi and is designed to treat higher acuity patients more effectively in a nursing home setting.

The unit is staffed with professionally trained nurses who are certified in advanced life support and have a 6-to-1 ratio with their patients. The unit's comprehensive real-time observation includes monitoring of:

- Blood pressure
- Pulse & pulse oximetry
- ST elevation/depression
- Systemic vascular resistance
- Stroke volume
- Cardiac rhythm
- Cardiac output
- Cardiac index

**NOW ACCEPTING
NEW PATIENTS.
CALL FOR A
TOUR TODAY.**



BROOKHAVEN
HEALTH CARE FACILITY

Gazzola Drive • East Patchogue • (631) 447-8800 • BrookhavenHealthCareFacility.com



THE NO FEEL

New Showroom • Enclosed Service
ALL TO SERVE



LOW PRICE GUARANTEE • SALES STAFF WITH OVER 10 YEARS OF EXPERIENCE
SERVICE OPEN 6 DAYS A WEEK (MONDAY - SATURDAY)
DRIVE-IN RECEPTION AREA (NO APPOINTMENTS)

**\$250
OFF**

**Any New or Pre-Owned
Vehicle Purchase or Lease!***

*Cannot be combined with any other offers. Coupon must be presented when order is written. Valid only at Sayville Ford.

Coupon Expires: 12/31/19

5686 SUNRISE HWY EXIT 50, SAYVILLE, NY



ES DEALER!

Service Drives • Giant Selection
YOU BETTER!



ER 150 YEARS OF COMBINED EXPERIENCE • FLEXIBLE FINANCING OPTIONS
-SATURDAY) • NIGHT SERVICE HOURS TIL 1AM (MONDAY-FRIDAY)
ENT NECESSARY) • FACTORY CERTIFIED AND TRAINED TECHNICIANS

**\$19.95
OIL CHANGE
SPECIAL**

*Up to 5 quarts, additional extra. Full Synthetic or Diesel oil extra. Coupon must be presented when service order is written. Cannot be combined with any other offers or previous purchases. Cost does not include taxes, shop supplies, and hazardous waste fees, if applicable. Valid only at Sayville Ford.

Coupon Expires: 12/31/19

**FREE
WHEEL ALIGNMENT
CHECK**

*Coupon must be presented when service order is written. Cannot be combined with any other offers or previous purchases. Cost does not include taxes, shop supplies, and hazardous waste fees, if applicable. Valid only at Sayville Ford.

Coupon Expires: 12/31/19

NY • SAYVILLEFORD.COM • 855.783.7721

& lyrics of Maury Yeston. He also re-wrote and co-directed a revival of Irving Berlin's last musical *Mr. President*, which Gerard also updated and "politically corrected". In May 2018 he wrote and directed a presentation of his latest musical *Bla Bla Land* at The Lincoln Center Library for The Performing Arts. In addition to The Tony, Gerard is the recipient two Lucille Lortel Awards, of an Obie Award, an Outer Critics Circle Award, a Lifetime Achievement Drama League Award and seven Drama Desk Awards or *Forbidden Broadway*, (Two for Best Lyrics, three for Best Musical Revue and two for special Achievement.) Gerard would like to thank Phill George and Bill Selby who directed previous productions of *Forbidden Broadway* here at The Gateway Playhouse and most especially his talented, and brilliant partner Glenn Bassett.

WILLIAM SELBY (Associate Director) has had a long and happy run with the "FORBIDDEN" family, having starred in the New York, Boston, San Francisco, Detroit, Salt Lake City, Denver, San Diego, Washington DC, Japan and Singapore companies. He has directed acclaimed productions of the show in Sacramento CA, New Orleans LA (Big Easy nominee, Best Cabaret), Chicago (5 nominations, including 2009 JEFF Award nominee, Best Director) Long Beach CA (two editions at Musical Theatre West; 2009 OVATION Award nomination, Best Ensemble, and 9 Ovation Award nominations in 2012: Winner of 2 awards, including Best Musical!), Pittsburgh CLO (two editions), Minneapolis (Chanhassen Dinner Theatre), Kansas City (Theatre League), Shawnee PA, Cleveland's famed Hanna Theatre and Milwaukee productions, ARC Stages in NY, as well as four editions of *A Forbidden Broadway Christmas* in Detroit (2 WILDE Award Best Director nominations), a symphony production in Las Vegas, and another with Gateway Playhouse! As an actor, Bill appeared in the NYC productions of *Forbidden Broadway* from 1989-2012. Other Off-Broadway credits: *Forbidden Hollywood* (Triad), *Nerds* (NY Musical Theatre Festival), *Juba* (Vineyard), and *The Apple Tree* (York Theatre Co). Workshop: *Finding Nemo* for Disney (Mr. Ray, Gill). Regional credits: *Priscilla Queen of the Desert* (Here at the Gateway, as Bernadette), *South Pacific* (Billis), *Barrymore*, *The Presidents* (with Rich Little), *Hot n' Cole*, *The*

All Night Strut, and several cabaret shows with Florida Studio Theatre in Sarasota. Recordings include "Forbidden Broadway, Vol. II", "FB 20th Anniversary Edition", "FB Rude Awakening" and the "FB Goes to Rehab" cd.

ROBERT FELSTEIN (Music Director) is so very happy to be back at The Gateway! He recently finished a decade-long run as music director for Off-Broadway's *The Fantasticks*, and on Broadway has worked with *Avenue Q* and *The Lion King*. He has had the pleasure of being conductor and arranger in concerts for many of the best-known singers of musical theater. Robert has music directed over seventy professional theater productions, as well as many university productions, and is active as an arranger and pianist for NYC cabaret performers. Current projects include orchestrations for a new Broadway-bound musical that just finished a London run, *It Happened in Key West*, and he is on the faculty of the University of Hartford.

SPENCER CLOUSE (Production Stage Manager) is thrilled to be joining The Gateway for their productions of *Forbidden Broadway* and *The Sound of Music* this summer. He is currently pursuing an MFA in Stage Management at the University of Iowa. Special thanks to his family and friends for all their love and support!

BRIAN LOESCH (Lighting Designer / Production Manager) is proud to be part of the Gateway family for his twenty-second season. Gateway Playhouse lighting design credits include: *Forbidden Broadway* (2008), *Forbidden Broadway Holiday Edition* (2011), *Cirque La Masque – Noel* (2011 & 2014), *Smokey Joe's Cafe* (2014), *Sweeney Todd* (2011), *A Christmas Carol* (2006 & 2010), *Avenue Q*, *Sophisticated Ladies*, *The Full Monty*, *Gateway's A Holiday Spectacular On Ice* (2004, 2009, 2016), *South Pacific* (2000), *Footloose*, *Jesus Christ Superstar*, *Kiss Me Kate*, *Holiday Hop*, *Urinetown*, *Mooseletoe* (2007 & 2008), *Beauty And The Beast* (2013), *Cabaret* (2004 & 2018) and numerous Gateway children's

Marketing Solutions for a Digital & Analog World



web • print • design

searlesgraphics.com | 631.400.3086

Who's Who

theatre productions including *Peter Pan* (2004) and *Jungle Book* (2005). Brian graduated with a Degree in Technical Theatre from Suffolk County Community College. Other design credits include *Language of Angels* (Henry Street Experimental Theatre, NYC), *Paraffin Touch* (World Premiere at Suffolk County Community College), *The Man Who Would Be King* (World Premiere at the Antrim Playhouse), and *Kiss Me Kate* (Cape Fear Regional Theatre). National Tour credits include *George M!* (2003 Candlewood Int./ Mainstage Productions), *Titanic* (2004 Candlewood Int.), *A Holiday Spectacular On Ice* (2004 A Gateway / Candlewood Production), *Mame* (2005-06 Candlewood Int.), *Camelot* (2006-07 Candlewood Int.), *Smokey Joe's Cafe* (2014 The Gateway), and the 2007 and 2008 productions of *Mooseltoe* (Simmelman Productions).

ALVIN COLT (Original Costume Designer) Alvin's costumes have been represented in 76 Broadway shows which include the original productions of *On The Town* and *Guys and Dolls*, plus *Li'l Abner*, *Fanny*, *Destry Rides Again*, *Sugar*, *Pipe Dream*, *Wildcat*, *Lorelei*, *Greenwillow* and numerous others. A Tony Award-winner, he has been nominated four times and is a four-time nominee for television's Emmy Award, having designed costumes for over 90 productions on all major networks.

WARNING: The photographing or sound recording of any performance is strictly prohibited.

FIRE NOTICE: The exit indicated by a red light and sign nearest to the seat you occupy, is the shortest route to the outside. In the event of fire or other emergency, please do NOT run. WALK to that Exit. However, under normal circumstances, when leaving the Theatre, use the center rear exits. SMOKING is prohibited in the BUILDING, as required by the Suffolk County NO SMOKING Ordinance. Smoking in any area designated "No Smoking" renders the offenders subject to a fine, or imprisonment, or both.

REACH THEM HERE TEXT MARKETING WORKS!



Call (631) 345-2202 or email info@searles.media for more information.

SHOPPING FOR CAR INSURANCE? CALL ME FIRST.

AVERAGE ANNUAL SAVINGS:

\$356*

DRIVERS WHO SWITCHED FROM:

Geico	saved \$305* on average with Allstate
Progressive	saved \$478* on average with Allstate
State Farm	saved \$318* on average with Allstate

Put your policy to the test.

Drivers who switched to Allstate saved an average of \$356* a year. So when you're shopping for car insurance, call me first. You could be surprised by how much you'll save.



John Cuenin
631-758-7225
 629 Route 112, Suite 10
 Patchogue
jc@allstate.com



Allstate
 You're in good hands.®

*Savings based on national customer reported data for new policies written in 2016. Actual savings vary. Discounts subject to terms, conditions and availability. Allstate Fire & Casualty Ins. Co., Allstate Vehicle & Property Ins. Co., Allstate Property & Casualty Ins. Co. & affiliates: 2775 Sanders Rd. Northbrook, IL 60062. © 2018 Allstate Insurance Co.

10012142

A PUB OF THE OLD STYLE

Pub Fare That Will Make Your Tongue Smile



Relax Before or After The Show — Full Bar & Menu

Kitchen Open 11 AM to 11 PM (Mon. thru Sat.) — Bar 'til 1 AM

70 North Ocean Avenue • Patchogue • (631) 289-1900 • www.reeses1900pub.com

AVINO'S



ITALIAN TABLE



NEIGHBORHOOD ITALIAN REDEFINED

PASTA | SEAFOOD | STEAK

OPEN DAILY FOR LUNCH & DINNER
SUNDAY BRUNCH

631-803-6416

108 SOUTH COUNTRY ROAD, BELLPORT VILLAGE

AVINOSITALIANTABLE.COM



LOBSTERFEST, EVERY MONDAY
SERVING BELLPORT SINCE 1985

ENROLL IN DANCE TODAY!

ALL AGES • ALL LEVELS • ALL STYLES



STAGE DOOR
SCHOOL OF DANCE

WWW.STAGEDOORDANCER.COM

655-19 MONTAUK HIGHWAY, E PATCHOGUE NY 11772 • 631.654.8858

We "Set the Stage" for civilized travel to New England!

• ROOM FOR OVER
90 VEHICLES
EACH CROSSING

• ON BOARD
FOOD SERVICE &
STEAMBOAT LOUNGE

NUMEROUS
CROSSINGS DAILY

• ENCLOSED
PASSENGER CABIN

BRIDGEPORT & PORT JEFFERSON FERRY

www.88844ferry.com 1-888-443-3779



TAKE ON SOMETHING UNEXPECTED TODAY

Today is yours for the taking. And AARP on Long Island is here in our community helping you make the most of it. Whether you're looking to give back at a soup kitchen, protect yourself from fraud at a free shredding event, or enjoy a discounted show with loved ones, we're here to connect with you and your family so you can get the most out of life.

So go make today and every day the best it can be.

Learn how at aarp.org/longisland

AARP[®] Real Possibilities
Long Island



ANHEUSER-BUSCH
FAMILY TALK
ABOUT DRINKING



**“STAY CONNECTED. TALK WITH YOUR
TEEN ABOUT UNDERAGE DRINKING.”**

-MJ CORCORAN
PARENT COACH

Parents are the number one influence on teens' decisions about drinking alcohol.*
Learn how to be a positive influence in your child's life.



Clare Rose Inc.



familytalkaboutdrinking.com

© 2011 ANHEUSER-BUSCH, ST. LOUIS, MO S&P
SOURCE: 2010 KAPLAN SPENDING, CONSUMER AND LIFE STYLE TRENDS STUDY

*The
Lake
Shore*

Assisted Living Residence

211 LAKE SHORE ROAD, LAKE RONKONKOMA, NY 11779
631.585.8800 | LAKESHORELI.COM



RATES STARTING AT \$2,500!
CALL US TODAY TO SCHEDULE A TOUR!

SHAKE THE SHORE
GATEWAY'S
70th
ANNIVERSARY
CELEBRATION

Friday, June 28, 2019 at 6:00pm
AT SUNSET HARBOUR

90 COLONIAL DRIVE • EAST PATCHOGUE, NEW YORK

HONORING

FRANK C. TROTTA

Tickets available at TheGateway.org or by calling **631.286.1133**

WATERSIDE DINING

The

Bar

Steak & Seafood Grill

THE FINEST & FRESHEST SEAFOOD

Enjoy Sunset Cocktails

Open Year Round Lunch & Dinner

Live Music Every Day • Brunch Saturday and Sundays from 11:00 AM – 2:30 PM



264 WEST AVENUE, PATCHOGUE (631) 654-8266 THEOAR.COM



McPeak's Proudly Supports The Gateway Playhouse

- Assisted Living with Supervision
24 Hours per Day, 365 Days per Year
- Post-Hospital/Rehab Care
- Medication Management
- Art Therapy, Music Therapy, and Yoga
- Transportation Services
- Special Diets Observed
- Programs to Increase Awareness for
Those with Cognitive Impairments
- Pet-Assisted Therapy

More than just a place to live... A better way of life.

286 North Ocean Avenue, Patchogue, NY 11772 • 631-475-0445 • www.mcpeaks.com



SOUTH OCEAN GRILL

FINE CASUAL DINING BY THE BAY

Patchogue's Hidden Gem

Executive Chef Hirbin and his staff look forward to serving you!!!

**SPECIALTY COCKTAILS, SANGRIA,
WINE & BEERS**

ARTISAN BREAD MADE ON PREMISES | MARKET SALADS
FRESH VEGETABLES | FRESHLY GROUND BURGERS
HAND SELECTED STEAKS AND FRESH FISH
HOUSE MADE DESSERT SELECTIONS

LUNCH: TUE. – SUN. 11AM-4PM

DINNER: TUE. – THU. & SUN. 4-9PM | FRI. & SAT. 4-10PM

567 S. OCEAN AVE | PATCHOGUE, NY | 631-307-9999

WWW.SOUTHOCEANGRILL.COM

PERFORMING ARTS CENTER OF SUFFOLK COUNTY

BOARD OF DIRECTORS

Chair Diane Giattino
Vice-Chair Ken Searles
Secretary/Treasurer Gale Edwards

Directors Paul Allan,
Jim Martinsen, Lisa Meyer-Fertal,
Ann L. Nowak, Terry Tuthill

ADMINISTRATIVE

Executive Artistic Director Paul Allan
Director of Business Operations Jeff Bellante
HR/Payroll Gale Edwards
Director of Development/
Public Relations Scot Patrick Allan
Company Manager Anthony Bartonik
Guest Services Tim Cole
Marketing Director Dave Cohen
Asst Company Manager Kenny Eng

ARTISTIC STAFF

Associate Artistic Director/
Casting Director Michael Edward Baker
Writer/Director Gerard Alessandrini
Associate Director William Selby
Music Director Robert Felstein
Asst Casting Director Rachel Armitstead
Lighting Designer Brian Loesch
Scenic Coordinator Brittany Loesch
Musical Contractor Peter Pece
Production Photographer Jeff Bellante

FACILITIES

Facilities & Concessions Manager ..Blake Armitstead
Cleaning Staff Jasper Bailey
House StaffMiguel Barrera, David Bellante,
Ralph Bianco, Matthew Fama,
Meghan Fawcett, Lauren Hersh,
Kerri Johnson, Joe Kraus, Aaron Legros,
Dominic Mondì, Tim Montick, Alex Pardo,
Danny Parr, Tyler Pegg, Savannah Ruiz,
Lukas Varacek
Grounds Maintenance HTM Landscaping Company
General Counsel Ann L. Nowak

EDUCATION

Education Director Michael Baker
Acting School Manager Rachel Armitstead
Teaching Staff Elijah Coleman,
Michelle Cosentino, Joseph Minutillo,
Megan Minutillo, Madison Mulvey,
Rich Walker, Amy Woschnik
Accompanists Peter Pece, Anthony Vetere

PRODUCTION

Production Manager Brian Loesch
Production Stage Manager Spencer Clouse
Technical Director Brandon Cheney
Costume Shop Manager/
Costume Coordinator Joe Greene
Master Electrician Riley Noble
Sound Engineer Ryan Chapman
Prop Master Mitch Domer
Wig Master Timothy Williams
Assistant Stage Manger Elise Jenkins
Assistant Technical Director John-Paul Baker
Shop Foreman Michele Ponton
Wardrobe Supervisor Bryanna Godell
Scenic Charge Tracie VanLaw
Assistant Prop Master Megan McQueeney
Assistant Master Electrician William Milligan
Costume Shop Assistant Rachel Allison
Staff Electrician Landon Ferrell
Carpenters Nathan Clark, Darrion Dockins, Imani
McCants, Breanna McNeal, Luke Raines

APPRENTICES

Electrics Apprentice Jessica Cuoghi
Carpentry Apprentice James Blydenburgh
Wardrobe Apprentice Zoe Brantley

INTERNS

Stage Management Intern Courtney Widgerson
Wardrobe & Wigs Interns Emily Greene,
Dylan Maldonado
Electrics Intern Rachel Turner
Carpentry Interns Coltin Colley,
Oliver Link Herbert, Lydia Nelson,
Christian Paris, Jimmy Reinier,
Zachary Tarwater

BOX OFFICE

Box Office Manager/Group Sales Laurie Cole
House Manager/Group Sales Joanne Tambasco
Assistant House Manager Abby Beodeker
Box Office Staff Judy Bianco,
Cooper Cannizzaro, Janet Caponi,
Beth Harrison, Phyllis Kaye,
Tina Realmuto

TRANQUILITY

WITHIN

A Center for Spiritual & Physical Well-Being



Yoga & Meditation Classes
Healers • Private Meditation Rooms
Workshops • Private Group Classes
Metaphysical Gift Shop



64 West Main Street, Patchogue
(631) 730-6464 • www.TranquilityWithin.com

TEMPERANCE HALL INN

Bellport Village

"Come Great South Bay With Us"



Temperance Hall is ideal for weekend getaways, wedding parties, retreats, locals overflow, & curated events.

Exclusive property buyouts available.

Come create experiences in Bellport Village, an "eclectic coastal town of old-meets-new."

To Reserve:

bellporthotel.com

631-286-5654

164 South Country Road Bellport Village



ABOUT FORBIDDEN BROADWAY

Forbidden Broadway was first seen at Palsson's Supper Club on New York's Upper West Side in January 1982. An unemployed actor, Gerard Alessandrini, wanted a showcase for his talents. He decided to assemble some of the musical parodies of Broadway shows he had written since childhood into a nightclub act. Critics and audiences were wowed. Almost twenty-five years later, on October 25, 2006, Broadway legend Angela Lansbury presented *Forbidden Broadway* and creator Gerard Alessandrini with the 2006 Tony® Honor for Excellence in the Theatre. What began as a cabaret showcase is now New York's longest running musical comedy revue. In addition to the Tony Honor, the show has won multiple Drama Desk, Obie and Outer Critics Circle Awards. Many of the show's victims (stars and casts) make a point of stopping by to see what Gerard Alessandrini has done to them. Updated regularly, *Forbidden Broadway* has had several editions, countless revisions, five New York City performance spaces, several national and international tours, and thousands of special performances including, recently, concerts with symphonies around the globe. *Forbidden Broadway* provides an informal and very funny history of the American musical theatre. It has remained one of the funniest evenings on or off Broadway. As long as Broadway and Hollywood exist, there will be a *Forbidden*, poking, prodding, teasing, pleasing, jeering and cheering, but always with love.

Assisted Living
Memory Care

VillageWalkSeniorLiving.com

VILLAGE WALK
A CARLISLE COMMUNITY

Managed by Life Care Services®

**TWIN
FORKS
INSURANCE**



**Protecting Your Family & Business
Like It's Our Own**



PERSONAL

Personal Auto • Homeowners • Watercraft • Flood

COMMERCIAL

Commercial Auto • Contractors • Restaurants • Worker's Compensation
Real Estate • Business Insurance

ADDITIONAL PRODUCTS

Life • Wedding • Travel • Defensive Driver Courses • Bonds • Cyber Insurance • EPLI

16 Station Rd. Suite 7 • Bellport, NY 11713
twinforksinsurance.com • info@twinforksinsurance.com

CALL TODAY FOR A FREE QUOTE! • 631-224-1000



www.li-precast.com
631-286-0240

Swezey

FUEL CO., INC. - EST. 1919

**Suffolk's Largest Family
Owned Energy Company**

- Heating & Air Conditioning
- Automatic Oil Delivery Service
- 24-Hour Emergency Service
- Budget Plans that Pay You Interest
- Expert Installations of Boilers, Burners, Hot Water Heaters & Air Conditioning Equipment



475-0270

51 RIDER AVE., PATCHOGUE



IT'S IN THE DETAILS

**EXPERT AUTO
COLLISION REPAIRS**

ALL INSURANCE ACCEPTED



1791 MONTAUK HIGHWAY
BELLPORT, NY 11713

286-2116



Ruland
FUNERAL HOME, Inc.

*Proudly Supporting The Arts
That Enrich Our Lives*

475-0098

500 N. OCEAN AVE, PATCHOGUE NY 11772



open 6 days
tuesday-sunday
11:30am-2am

your neighborhood
restaurant & pub
est. 1986

late night
kitchen open
until 10pm



Lessons, Intro Flights, Sightseeing & Aero Camps



MID ISLAND FLIGHT SCHOOL
LI MacArthur Airport 631-588-5400
Brookhaven Airport 631-281-5400
www.midislandair.com

255 Blue Point Avenue
Blue Point 🍀 631-363-2666

OPEN TUESDAY-SUNDAY 🍀 11:30-2AM
LATE NIGHT KITCHEN OPEN UNTIL 10PM

cavanaughbluepoint.com

📘 Find us on facebook

**GREATER
PATCHOGUE**
CHAMBER OF COMMERCE
- BUILDING COMMUNITY THROUGH COMMERCE -
EST. 1923

THE GREATER PATCHOGUE CHAMBER OF COMMERCE
VISIT PATCHOGUE.COM
FOR INFORMATION ON ALL THINGS PATCHOGUE!

CONTRIBUTE TO THE FUTURE OF THE ARTS

We invite you to lend your support and become a bigger part of our performing arts family.

- ★ **STAR BILLING**
\$25,000 +
- ★ **LEADING PLAYER**
\$15,000 +
- ★ **PRINCIPAL ROLE**
\$5,000 +
- ★ **DIRECTOR'S CIRCLE**
\$2,500 +
- ★ **FRONT ROW VIP**
\$1,000 +
- ★ **BACKSTAGE PASS**
\$500 +
- ★ **CAST MEMBER**
\$250 +
- ★ **STAGE HAND**
\$100 +
- ★ **FAN CLUB**
\$50 +

GO TO THEGATEWAY.ORG AND CLICK ON SUPPORT OR CALL (631) 286-7027 FOR MORE INFORMATION

The Performing Arts Center of Suffolk County is a 501(c)3 non-profit organization – all donations are 100% tax-deductible. Thank you for your contribution to the future of the arts!

To adjust the way your name is listed here, please email Scot@TheGateway.org or call **631-286-7027**.

BOARD MEMBERS

Paul Allan
Gale Edwards
Diane Giattino
Frank Lento
Jim Martinsen
Lisa Meyer-Fertal
Ann Nowak
Ken Searles

STAR BILLING

Ingird Arneberg
County of Suffolk
The Knapp Swezey Foundation
AARP
The Dooner-Rockwell
Charitable Trust

LEADING PLAYER

The Kana Family
County of Suffolk Cultural Arts

PRINCIPAL ROLE

Boykin Curry
Thomas Gavin
Cecile Defforey
New York State Council
on the Arts

DIRECTOR'S CIRCLE

Cullen and Danowski, LLP
Maggio Environmental, LLC
Frank and Ginny Palamara
William J. Oneill Sales
Exchange, Inc.

FRONT ROW VIP

Susan Belcher
HSBC Bank
South Country Lions Club
Cheryl A. Felice and
Lorraine Kuehn
Firoi Enterprises Inc.
Flanzer Construction
Judy Fortuna-Ince and Peter Ince
Phil and Debbie Grucci
Dave and Debbie Morrissey
Phylis Natoli and
Debbie-Ann Chang
William J. O'Neill Sales
Exchange Co., Inc

Isabella Rossellini
Selma Rothstein
Cathy and Ken Weiss
Frank and Marie Trotta

BACKSTAGE PASS

Teresa Abramowski and
Everett Och
Myrna Basile
Susan Benincasa
Donald Bernstein
Alison Buck and Rob Wegener
Barry Buckland
Estella and Robert Clasen
Ellen Clyne
Thomas and Sara Jane Corwin
John Shea Jr. and Diane Crean
John and Erna Cuenin
Gloria Cummings
Dohn Dacey
Jeff Davies and Michael Mizrahi
Charles and Linda DesJardin
Kenneth Gobright
Steve Hayden and Kristy Allen
Judy Fortuna-Ince
and Peter Ince
Susan Kahl and Jim Vaughan
Vincent and Linda Leuzzi
Ann Marie and Gary Loesch
Gloria Mancuso and
Glenn Dielmann
Roe Agency
Joe and Tricia Manno
Glenn and Louise Mehrtens
Steve Mercurio
Lisa and George Meyer-Fertal
Michael and Hwasoon Mullaney
Catherine Oberg
Laura Orofino
The Sparklers
Maria Pierce
Patricia Polak
Karen Ritter
Jean-Marie and Selima Salaun
Brian Smith
George and Robin Smith
Judith Steinberg
Bill Stonehouse
Candace Leeds and
Jay H. Tanenbaum
Jay Tanenbaum
David Tobachnik and

Alice Ann Humphrey
Maureen Veitch

CAST MEMBER

Teresa Abramowski and
Everett Och
John and Connie Albin
Bill Allan
and Mary Lou Maloney
Luke and Elise Allen
Jimmy and Nancy Avino
Jo Bennett
Dr. and Mrs. Chantal and
Richard Berman
John and Loree Bowcock
Steve and Kate Browning
Alexsandra Buckner
Robert Budd
Lynn Burnett
Dr. Kym Carpentieri and
Mr. Mike Eller
Bob and Pat Chieffo
Joe and
Shana Conza Thomas
and Sara Jane Corwin
Susan Coseglia
The Cotter Family
Mary Jane and Brian Cullen
Gloria Cummings
Rich and Kathy Dallin
Dawn and Nikki DeMatteo
Thomas Derby
Dennis and Kathy Desmond
Alexandra Diamond
Susan Duggan
Marc Eron
Bob and Donna Esp
Ken and Tami Fehling
Anna Lou Fletcher
Fran and Laurie Fosmire
Joe Franco
Mike and Pat Garofola
Michael and Dara Gary
Mary Giattino
Ada Graham
Ed Graziano
and Doug Carabe
Johnny Devito
and Nick Gumas
Judith Hope
John Hulse

Joey and Merri Italiano
Susan Kahl and Jim Vaughan
Bob Koenig
Peggy Kulakowski
Harris Lefkon
Jeffrey Leibowitz,
Atlantic Agency Insurance
and Risk Management
Mr. Jeffrey Leibowitz
Carol and Gordon Lenz
Ann Marie and Gary Loesch
Jan Love
Margie K Ludewig
Christopher and
Dorothea Maloney
Lisa and
George Meyer-Fertal
Nancy Duncan and
Jamie Moog
Craig Morrison
Jack Moter and Jane Graham
Heather Mylonas
Renee Negron
Jamie and Mandi Neville
Mandi Neville
Susan Newton
Meredith Bain
and Eugene Nifenecker
Bob and Kathe Palermo
Kim Poppiti
June Potter
Ann and Bob Quinn
Sandy Reifel
Kevin Rienecker
Billy Rignola
Barbara and Eric Russo
and Family
Jean-Marie and
Selima Salaun
Ray Schiemel
Ray and Susan Schiemel
Laura Soper
Brett Steinberg
Judith Steinberg
Virginia Stone
Kelly Summers
Krista Svedberg
Janet and John Taylor
Joseph and
Patricia Van De Wetering
Fred and Marna Vareny

Virginia Waterman
Allen and Angela Welcome
Laura Zinnati

STAGE HAND

Steven and Madelon Alter
Susan Benincasa
Estella and Robert Clasen
Mary Lou Cohalan
Kathy and Tom Cullen
Nick and Julia Fasano
Katie Ford-Mehrkens
Samara & Allene Goldberg
Joyce Hanly
Timothy and Laura Hawryluk
Jean Hebllich
DiGrace Hoiland
Richard Hoshino
Robert K. Irish
Janice F. Klein
Susanna Klein
Janice F. Klein
Vasili Kreatsoulas
William Vasili Kreatsoulas
Marilyn Hamilton and
Joseph LaGennusa
Vincent and Linda Leuzzi
Ann Lucas
Gail Mancuso
Mr. and Mrs. R. Mazzella
J. Signs Inc.
Jerome Morello
Emily Morton
Suzanne Niemeyer
Kevin and Joy O'Brien
Jeanette Paolillo
Lynn and Joe Pessalano
Paul Pohorelec
Jean Pokorny
Edwin and Joan Schultheis
Stephanie Schurmann
Patricia Sikorski
Donald Steckler
Judith Steinberg
Janet Tatum
Laura Terwilliger
Susan and Magnus Thorstenn
Lorelei Tuthill
George and Nancy Tvelia

FAN CLUB

Leonard and Eileen Astrin
Bisagni Family
Maureen Campanelli
June Cardenas
Shelley Case
Margaret Culhane
Kathie Davis
Wendy and Roy Erlandson
Patricia Flynn
Mr. and Mrs. Philip Gambino
Joseph and
Maryellen Gathard
Jean Hebllich
Kathy Scheverman and
Friends
PK Hopkins
Susan Karas
Joan Didio Kinsella
David and
Peggy Kulakowski
Connie Lipnicki
Susan Masciello
Mr. and Mrs. Daniel G.
McConnell
John E. Morris
Emily Morton
Mrs. Marilyn Munson
Barbara Navetta
Richard and
Ruth Anne Otterstedt
Dr. Mary Koslap-Petraco
Mary Petraco
Andrew and Jennifer Setzer
Mary Ellen Smith
Richard and
Denise Strothman
Patricia Tarasenko
Irwin and Susan Wein
William and
Janet Wrobleksi
Chuck and Karen Zahradka

***Listed names reflect
2019 FY donations**



O'NEILL'S

— SALES EXCHANGE —

Fine Jewelry and Watches • Short Term Collateral Loans
Expert Jewelry Repair and Design



1 EAST MAIN ST. PATCHOGUE, NY 11772
631-280-0800

VISIT US ON
Winjoneills.com



THANK YOU TO OUR USHER GROUP 2019

Carmela Aiosa, Missy Atchue, Cheryl Becker, Cecilia Beda, Violet Bezler, Camille Brideson, Marie Chinaea, Suzette Ciminelli, Lorrie Clifford, Mary Lou Cohalan, Nancy Connolly, Mario D'Amore, Melissa Donovan-Foglia, Pat Ely, Betty Entress, Kristina Farmer, Jim Ficker, Patti Ficker, Linda Gaimaro, Kaitlyn Gambina, Joyce Gambina, Lou Giudice, Linda Good, Sue Greenleaf, Connie Gulotti, Susan Hersh, Barbara Keup, Bob Koenig, Mary Lanier, Diane Lovizio, Eileen Maida, Bea Marelli, Connie Merced, Emma Miele, Sue Nemet, Judy Onorato, Linda Okolowich, Celmira Pachon, Cathy Pernice, Pete Pernice, Linda Randolph, Annette Reeve, Sandy Reifel, Pat Santalone, Harold Schiffman, Olivia Schilling, Steven Schilling, Cathy Steinkraus, Diane Warren, Joe Warren.

ROE AGENCY INC.

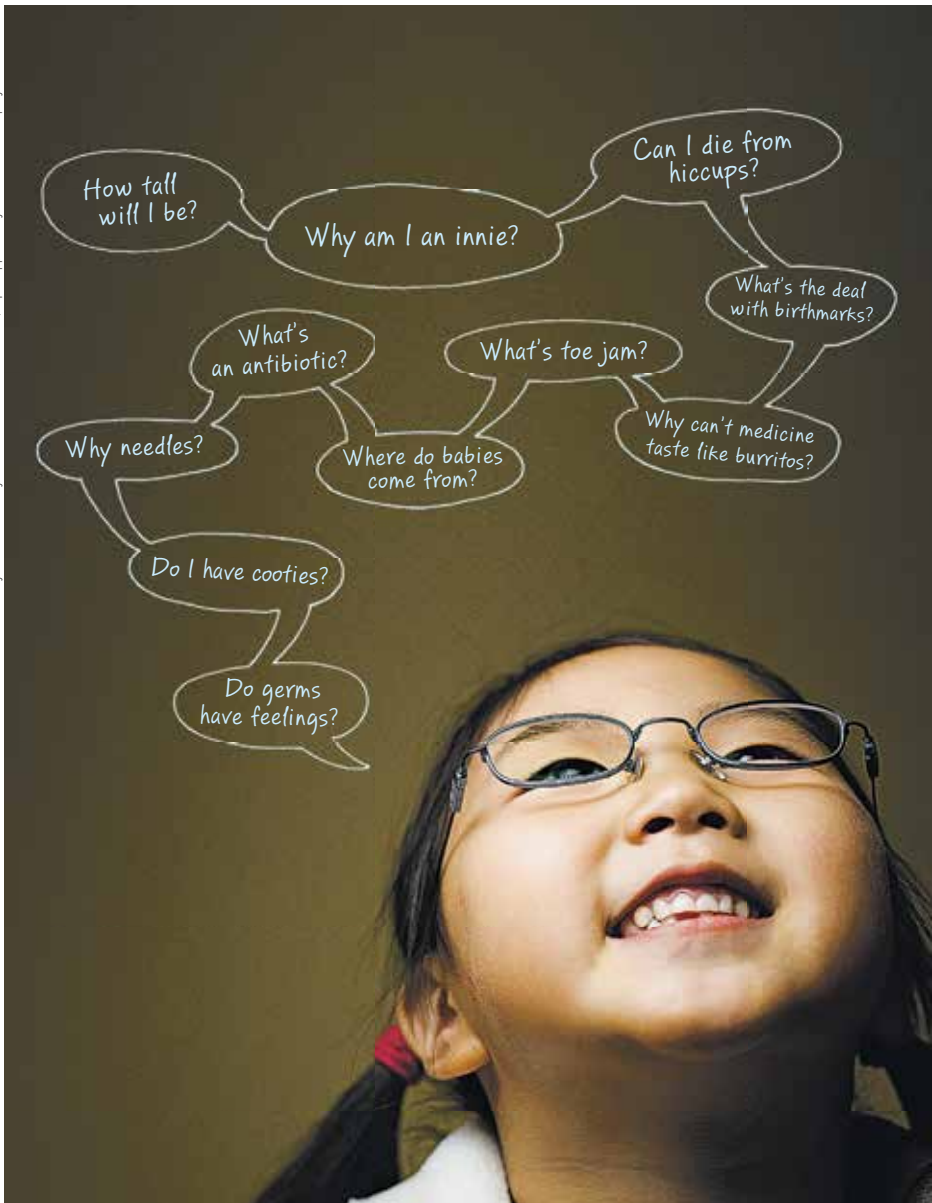
*Over A Century of Commitment
Since 1898*

ALL FORMS OF INSURANCE

PERSONAL & COMMERCIAL

Call us for a quote!

125 East Main St., Patchogue, NY 11772
p: 631.475.4000 f: 631.475.7648



They have questions. We have answers.

And with more than 180 pediatric specialists at Stony Brook Children's Hospital, we also have the unique ability to treat even the most difficult health needs of your child, all in a kid-friendly environment made just for them.

Part of Stony Brook Medicine | stonybrookchildrens.org



**Stony Brook
Children's**

The best ideas in medicine for kids.

We treat boxers and ballerinas.



Location courtesy of Ovation Dance Studios.

We've served this richly diverse region as a community hospital for more than 60 years. And as the area has grown, so have we. But as Long Island doctors, nurses, and healthcare professionals, we've never outgrown our devotion to the health of the community we all call home.

That commitment can be seen in the Knapp Cardiac Care Center, a new surgical pavilion, our level III trauma center, our women's imaging, breast health, orthopedics, bariatrics, and so much more.

So while we've updated our brand to represent our growth, our quality improvements and the patient-first changes we've made, there is one thing that will never change: Our commitment to make you feel as comfortable in our home as you do in your own.

Your community. Your hospital.
LICommunityHospital.org

**Long Island
Community Hospital**

101 Hospital Rd, Patchogue, NY 11772 • 1.800.694.2440