

THE *Gateway*

PRESENTS

# ROCK AGES

MAY 3-JUNE 2



# Ranked Among the Top 1% of Hospitals in the Nation

Out of nearly 4,500 hospitals evaluated for clinical outcomes, Stony Brook University Hospital was ranked by Healthgrades® as one of America's 50 Best Hospitals — now for two years in a row. That places us in the top 1% of all hospitals across the entire country. Our hospital is the only hospital on Long Island to achieve this. As part of this ranking, Stony Brook Southampton Hospital also shares in this recognition. It's a reflection of our commitment to bring the best in care to our patients. And it means that our patients can feel confident, knowing they're receiving such high-quality care.

**All we do is all for you.**



**Stony Brook University Hospital**

Learn more at [stonybrook.info/top-hospitals](https://stonybrook.info/top-hospitals)

Stony Brook University/SUNY is an equal opportunity educator and employer. 24010771H



**PAINTERS'**  
Restaurant

Join us for  
**BRUNCH LUNCH DINNER**

.....  
Serving Brunch Saturday & Sunday  
11am - 3pm  
.....

**FOR CATERED EVENTS  
CALL OUR CATERING DIRECTOR  
ZACH 631•923•8860**

2 MILES EAST OF GATEWAY PLAYHOUSE  
416 SOUTH COUNTRY RD. BROOKHAVEN, NY 11719  
631-803-8593



# The Most Important Role We Play: A Partner in Your Health

NYU Langone Health is expanding in your neighborhood, so it's easier than ever to access top-quality care. Our primary care team will manage your care, bringing in NYU Langone Health specialists when they are needed.



**Lisa Marx, DO**  
Family Medicine



**Deirdre Stokes, DO**  
Family Medicine

## **NYU Langone Primary Care Associates—Bellport Village** Ages 6+

16 Station Road, Suite 5-6  
Bellport, New York 11713  
631-286-3995



**Nusrat Loqman, DO**  
Family Medicine



**Rahkil Maizel, MD**  
Family Medicine

## **NYU Langone Medical Associates—Oakdale** Ages 12+

4568A Sunrise Highway, 1st Floor  
Oakdale, New York 11769  
631-730-8542



Source: Vizient Ambulatory Care Quality and Accountability Award:  
Ranked #1 out of 55 participating networks.

To schedule an appointment, visit [nyulangone.org/doctors](https://nyulangone.org/doctors)

# THE *Gateway*

Production of



Book by

**CHRIS DARIENZO**

Arrangements and Orchestrations by

**ETHAN POPP**

*Featuring*

**MARK RYAN ANDERSON    ETHAN CARLSON    AARON FRIED    ASIA KALEEM  
IAN KNAUER    SARAH MICHELE LINDSEY    MALIA MONK  
CHRISTOPHER PERSICETTI    WOODY SCOTT WHITE**

*With*

**JADE BENTON    PATRICK SAINT ANGE    JOSHUA SHEA COATES  
CARLY CAVIGLIA    ERIK DAUGHTERMAN    KAYLEIGH HEGARTY  
JOSIAH HICKS    DAKOTA HOAR    KELLY MACMILLAN**

Executive Artistic Director

**PAUL ALLAN**

General Manager

**GALE EDWARDS**

Casting Director

**RACHEL ARMITSTEAD**

Costume Designer

**JANINE LOESCH**

Sound Designer

**BEN TAKITCH**

Projections Designer

**ZACH BOROVAY**

Production Manager

**BRIAN LOESCH**

Scenic Designer

**JORDAN JANOTA**

Wig, Hair & Makeup Designer

**DUSTIN LAWSON**

Assistant Choreographer

**KELLY MACMILLAN**

Production Stage Manager

**ARTHUR ATKINSON**

Music Director

**MICHAEL KAISH**

Director of Business Operations

**JEFF BELLANTE**

Director of Development and PR

**SCOT PATRICK ALLAN**

Lighting Designer

**KIM HANSON**

Properties Designer

**BRITTANY LOESCH**

Company Manager

**COLLIN ALOI**

Director/Choreographer

**KEITH ANDREWS**

ROCK OF AGES is presented by arrangement with Concord Theatricals. [www.concordtheatricals.com](http://www.concordtheatricals.com)

St. Joseph's  
University  
NEW YORK



[sjny.edu](https://sjny.edu)

# Encore Ready

Stellar performances start at St. Joseph's University, New York. Our award-winning educational programs offer a world of opportunities close to home, preparing students to take center stage and be ready for lives of purpose and achievement.

**Ready. Set. Joe's.**

Brooklyn • Long Island • Online

# PORTERS

*on the lane*

COCKTAILS  RESTAURANT  CATERING



FOR RESERVATIONS *or* MORE INFO CONTACT US

phone ✦ 631 — 803 — 6067

email ⚓ [portersbellport@aol.com](mailto:portersbellport@aol.com)

NEW MENUS - SPECIALS - MUSIC - UPCOMING EVENTS

HOURS *AND* MORE VISIT ...

website 🌐 [www.portersonthelane.com](http://www.portersonthelane.com)

Address - 19 Bellport Lane Bellport Village NY 11713

**SOMETHING SWEET FROM ACROSS THE STREET**

*Carla Marla's*

ICE CREAM PARLOR & CANDY SHOP



one free topping w/ this coupon

CALL: 631-803-6630

email: [carlamarlas@hotmail.com](mailto:carlamarlas@hotmail.com)

8 BELLPORT LANE, BELLPORT VILLAGE, NY 11713

# CAST OF CHARACTERS

(In Order of Appearance)

Lonny.....	CHRISTOPHER PERSICHETTI*
Justice.....	ASIA KALEEM*
Dennis.....	AARON FRIED*
Drew.....	WOODY SCOTT WHITE*
Sherrie.....	MALIA MONK*
Father.....	MARK RYAN ANDERSON*
Mother.....	ASIA KALEEM*
Regina.....	SARAH MICHELE LINDSEY*
Mayor.....	PATRICK SAINT ANGE
Hertz.....	IAN KNAUER*
Franz.....	ETHAN CARLSON*
Stacee Jaxx.....	MARK RYAN ANDERSON*
Waitress #1.....	KELLY MACMILLAN*
Reporter.....	CARLY CAVIGLIA
Ja'Keith.....	PATRICK SAINT ANGE
Joey Primo.....	JOSHUA SHEA COATES
Young Groupie.....	JADE BENTON
Ensemble.....	JADE BENTON, CARLY CAVIGLIA, JOSHUA SHEA COATES, ERIK DAUGHTERMAN KAYLEIGH HEGARTY, JOSIAH HICKS, DAKOTA HOAR, KELLY MACMILLAN*
Production Stage Manager.....	ARTHUR ATKINSON*
Assistant Stage Manager.....	MIRIAM HYFLER*
Dance Captain.....	KELLY MACMILLAN*

## THE BAND

Music Director/Keys/Conductor.....	MICHAEL KAISH
Guitar 1/Associate Conductor.....	JACK MONTELEONE
Guitar 2.....	JOE LOSCHIAVO
Bass.....	TEDDY MOTZ
Drums.....	BRETT BEIERSDORFER

## UNDERSTUDIES

Lonny, Drew, Stacee.....	JOSHUA SHEA COATES
Justice, Mother.....	JADE BENTON
Dennis.....	DAKOTA HOAR
Sherrie, Regina.....	CARLY CAVIGLIA
Mayor, Ja'Keith.....	JOSIAH HICKS
Hertz.....	DAKOTA HOAR
Franz.....	ERIK DAUGHTERMAN



\*Actors employed in this production are members of Actors' Equity Association, the union of Professional Actors and Stage Managers in the United States.



The Director/Choreographer is a member of the Society of Stage Directors and Choreographers, Inc., an independent national labor union.



The Musicians employed in this production are members of the American Federation of Musicians.

THE VIDEOTAPING OR MAKING OF ELECTRONIC OR OTHER AUDIO AND/OR VISUAL RECORDINGS OF THIS PRODUCTION AND DISTRIBUTING RECORDINGS OR STREAMS IN ANY MEDIUM, INCLUDING THE INTERNET, IS STRICTLY PROHIBITED, A VIOLATION OF THE AUTHOR(S)'S RIGHTS AND ACTIONABLE UNDER UNITED STATES COPYRIGHT LAW. FOR MORE INFORMATION, PLEASE VISIT: <https://concordtheatricals.com/resources/protecting-artists>

FIRE NOTICE: The exit indicated by a red light and sign nearest to the seat you occupy, is the shortest route to the outside. In the event of fire or other emergency, please do NOT run. WALK to that Exit. However, under normal circumstances, when leaving the Theatre, use the center rear exits. SMOKING is prohibited in the BUILDING, as required by the Suffolk County NO SMOKING Ordinance. Smoking in any area designated "No Smoking" renders the offenders subject to a fine, or imprisonment, or both.



# MUSICAL NUMBERS

## ACT I

LIVIN' IN PARADISE / CUM ON FEEL THE NOIZE  
SISTER CHRISTIAN / MOTORIN'  
WE BUILT THIS CITY/TOO MUCH TIME ON MY HANDS  
I WANNA ROCK  
WE'RE NOT GONNA TAKE IT  
MORE THAN WORDS / HEAVEN  
I'VE BEEN WAITING FOR A GIRL  
DEAD OR ALIVE  
I WANT TO KNOW WHAT LOVE IS  
CUM ON FEEL THE NOIZE / WE'RE NOT GONNA TAKE IT  
HARDEN MY HEART / SHADOWS OF THE NIGHT  
HERE I GO AGAIN

## ACT II

THE FINAL COUNTDOWN  
POUR SOME SUGAR / I WANNA ROCK / ROCK OF AGES  
HIGH ENOUGH  
BEAVER HUNT  
HATE MYSELF FOR LOVIN' YOU / HEAT OF THE MOMENT  
HIT ME WITH YOUR BEST SHOT  
CAN'T FIGHT THIS FEELING  
EVERY ROSE HAS ITS THORN  
KEEP ON LOVIN' YOU  
OH SHERRIE  
THE SEARCH IS OVER  
RENEGADE  
DON'T STOP BELIEVIN'

## SONG LIST

- "**Anyway You Want It**" written by Steve Perry and Neal Schon. © Published by Lacey Boulevard Music and Weed High Nightmare Music.
- "**Beaver Hunt**" written by David Gibbs and Chris Hardwick. Published by Feed the Pony Songs and Fish Ladder, Inc. (BMI)
- "**Can't Fight This Feeling**" written by Kevin Cronin. © Published by Fate Music. (ASCAP)
- "**Cum on Feel the Noize**" written by Neville Holder and James Lea. © Barn Publishing (Slade) Ltd.
- "**Don't Stop Believin'**" written by Jonathan Cain, Stephen Ray Perry, Neal J. Schon. © Published by Weed High Nightmare Music and Lacey Boulevard Music.
- "**Every Rose Has Its Thorn**" written by Bobby Dall, Bruce Anthony Johannesson, Bret Michael, Rikki Rocket. © All rights owned or administered by Universal Music-Z Songs on behalf of Cyanide Publ./BMI. Used by permission.
- "**The Final Countdown**" written by Joy Tempest. © Screen Gems-EMI Music Inc.
- "**Harden My Heart**" written by Marvin Webster Ross. © 1980 WB Music Corp. (ASCAP), Narrow Dude Music (ASCAP) and Bonnie Bee Good Music. All rights administered by WB Music Corp. All rights reserved. Used by permission.
- "**Heat of the Moment**" written by Geoffrey Downes and John K. Wetton. © 1982 WB Music Corp. (ASCAP). Almond Legg Music Corp. (ASCAP) and Pallan Music. All rights on behalf of itself and Almond Legg Music Corp. administered by WB Music Corp. All rights reserved. Used by permission.
- "**Heaven**" written by Jani Lane, Erik Turner, Jerry Dixon, Steven Sweet and Joey Allen ©.
- "**Here I Go Again**" written by David Coverdale and Bernard Marsden © 1982 C.C. Songs Ltd. (PRS) and Seabreeze Music Ltd. Administered by WB Music Corp. (ASCAP). All rights reserved. Used by permission.
- "**High Enough**" written by Jack Blades, Ted Nugent and Tommy R. Shaw. © Published by Bicycle Music Company, Broadhead Publishing and Wixen Music.
- "**Hit Me With Your Best Shot**" written by E. Schwartz. © Sony/ATV Tunes LLC/ASCAP.
- "**I Hate Myself for Loving You**" written by Desmond Child and Joan Jett. © All rights owned or administered by Universal-PolyGram Int. Publ., Inc./ASCAP. Used by permission.
- "**I Wanna Rock**" written by Daniel Dee Snider. © All rights owned or administered by Universal Music-Z Melodies on behalf of Snidest Music/SESAC. Used by permission.
- "**I Want to Know What Love Is**" written by Michael Leslie Jones. © Published by Somerset Songs Publishing, Inc.
- "**Just Like Paradise**" written by David Lee Roth and Brett Tuggle. © Diamond Dave Music c/o RS Plane Music.
- "**Keep on Lovin' You**" written by Kevin Cronin. © Published by Fate Music (ASCAP).
- "**Kiss Me Deadly**" written by Mick Smiley. © Published by The Twin Towers Co. and Mike Chapman Publishing Enterprises.
- "**More Than Words**" written by Nuno Bettencourt and Gary F. Cherone. © All rights owned or administered by Almo Music Corp. on behalf of Color Me Blind Music/ASCAP. Used by permission.
- "**Nothin' But a Good Time**" written by Bobby Dall, Bruce Anthony Johannesson, Bret Michaels, Rikki Rocket. © All rights owned or administered by Universal Music-Z Songs on behalf of Cyanide Publ./BMI. Used by permission.
- "**Oh Sherrrie**" written by Steve Perry, Randy Goodrum, Bill Cuomo, Craig Krampf. © Published by Street Talk Tunes, April Music Inc. & Random Notes, Pants Down Music and Phosphene Music.
- "**Pour Some Sugar On Me**" Written by Joseph Elliott, Richard Savage, Richard John Cyril Allen, Stephen Maynard Clark, Philip Kenneth Collen, Robert John Lange Published by BMG Gold Songs (ASCAP) Used by permission. All rights reserved.
- "**Renegade**" written by Tommy Shaw. © All rights owned or administered by Almo Music Corp. on behalf of itself and Stygian Songs/ASCAP. Used by permission.
- "**Rock of Ages**" Written by Joseph Elliott, Richard Savage, Richard John Cyril Allen, Stephen Maynard Clark, Robert John Lange, Peter Andrew Willis Published by BMG Gold Songs (ASCAP)
- "**The Search is Over**" written by James Petterik and Frankie Sullivan. © 1984 Kohaw Music (ASCAP) and Easy Action Music (ASCAP) and Rude Music, Inc. (BMI). All rights administered by Kohaw Music (ASCAP) obo itself and Easy Action Music (ASCAP), c/o The Bicycle Music Company and Three Wise Boys Music (BMI) on behalf of itself and Rude Music (BMI). All rights reserved. Used by permission.
- "**Sister Christian**" written by Kelly Keagy. © Published by Bicycle Music Company.
- "**To Be With You**" written by David Grahame and Eric Martin. © EMI April Music, Inc. obo itself, Dog Turner Music and Eric Martin Songs (ASCAP).
- "**Too Much Time on My Hands**" written by Tommy Shaw. © Stygian Songs/ASCAP.
- "**Waiting for a Girl Like You**" written by Michael Leslie Jones and Louis Gramattico. © Published by Somerset Songs Publishing Inc.
- "**Wanted Dead or Alive**" written by Jon Bon Jovi and Richard S. Sambora. © All rights owned or administered by Universal-Polygram Int. Publ., Inc. on behalf of itself and Bon Jovi Publishing/ASCAP. Used by permission.
- "**We Built This City**" written by Dennis Lambert, Martin George Page, Bernie Taupin and Peter Wolf. © All rights owned or administered by Universal-Polygram Int. Publ., Inc. on behalf of Little Mole Music Inc./ASCAP. Used by permission.
- "**We're Not Gonna Take It**" written by Daniel Dee Snider. © All rights owned or administered by Universal Music-Z Melodies on behalf of Snidest Music/SESAC. Used by permission.

# Now there are 4 ways to “Listen to Lawrence” Davidow explain Elder Law, Special Needs and Estate Planning.

1



**WATCH** the  
*Listen to Lawrence*  
seminar in its entirety  
on our website.

2



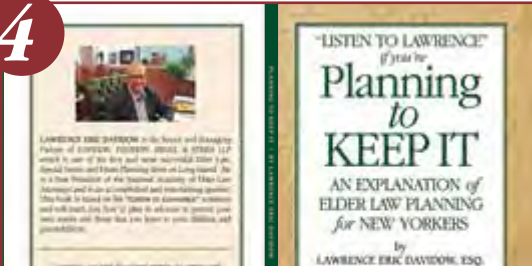
**LISTEN** to the *Listen to Lawrence* Podcast series, to find out the answers to commonly asked questions. Find it on our website or wherever you get your podcasts.

3



**LEARN** from the *Listen to Lawrence* Letters that are released twice a week – sign up at [info@davidowlaw.com](mailto:info@davidowlaw.com) to receive them in your inbox.

4



**READ**  
the *Listen to Lawrence*  
Book: *Planning to Keep It*  
now available  
on Amazon.



## DAVIDOW, DAVIDOW, SIEGEL & STERN, LLP

Long Island's Elder Law, Special Needs and Estate Planning Firm

1050 Old Nichols Road - Suite 100, Islandia, New York 11749 | Tel. (631)234-3030

[www.davidowlaw.com](http://www.davidowlaw.com) Additional office located in Mattituck

# Escape life for a little while.



DEPARTING: North Fork, South Fork, Farmingville & Huntington.

Learn More: [hamptonjitney.com/Tours](http://hamptonjitney.com/Tours)

Contact Us: 631.283.4600 ext. 7770





# We're in Your Corner

People today can spend nearly half their lives over the age of 50. That's a lot of living. So, it helps to have a wise friend and fierce defender like AARP Long Island in your community so your money, health and happiness live as long as you do.

AARP offers tools, resources and local expertise to help you achieve your goals and stay connected.



Scan the QR  
code or visit  
[aarp.org/local](https://aarp.org/local)  
to learn more.

 /AARPLongIsland  @AARPLongIsland





**STAGE DOOR**  
SCHOOL OF DANCE

SUMMER

2024

DANCE

Preschool - Youth & Teen - Adult - weDance

**July 8 to August 10, 2024**

*A dance studio for everyone.*



*View Schedule*

**NOW  
ENROLLING  
ALL AGES!**

*The*  
**Gateways**  
75<sup>th</sup> Season

**ROCK  
OF  
AGES**

JIMMY BUFFETT'S  
*Escape to*  
**Margaritaville**

**Beautiful**  
The Carole King Musical

*Irving Berlin's*  
**WHITE  
CHRISTMAS**  
THE MUSICAL

**AN  
EXCITING  
NEW MUSICAL!**  
TO BE ANNOUNCED SOON!

*The*  
**Addams  
Family**  
THE BROADWAY MUSICAL

**CONVERT YOUR ROCK OF AGES TICKETS  
TO A FLEX PASS AND SAVE \$\$\$  
ON ALL FUTURE SHOWS!**



**ALL 6**  
SAVE  
**35%**

**3 OR MORE**  
SAVE  
**25%**

**SAVE  
NOW  
CHOOSE  
DATES  
LATER**

**FLEX-PASS  
OPTIONS INCLUDE:**

- Buy now, choose dates later
- Free ticket exchanges
- Premium Seats
- Friends & Family Discount
- Special Discounts
- Early Purchase Privileges

Contact us for more info

631-286-1133 • TheGateway.org • 215 South Country Rd, Bellport

Photo credit: Alexis Grant and Arizona Broadway Theatre



# Escape to Margaritaville

Music and Lyrics by  
Jimmy Buffett  
Book by  
Greg Garcia and Mike O'Malley

**JUNE 21-JULY 21**

# Beautiful The Carole King Musical

The inspiring true story of Carole King's  
remarkable journey from a teenage  
songwriter to the Rock & Roll Hall of Fame!

Music and Lyrics by  
Gerry Goffin, Carole King, Barry Mann  
and Cynthia Weil  
Book by  
Douglas McGrath



**AUGUST 9-SEPT. 8**



# AVINO'S



## ITALIAN TABLE



NEIGHBORHOOD ITALIAN REDEFINED

PASTA | SEAFOOD | STEAK

OPEN DAILY FOR LUNCH & DINNER  
SUNDAY BRUNCH

631-803-6416

108 SOUTH COUNTRY ROAD, BELLPORT VILLAGE

AVINOSITALIANTABLE.COM



LOBSTERFEST, EVERY MONDAY  
SERVING BELLPORT SINCE 1985

# STALLER

## 2024 FALL SEASON

BROADWAY  
RENÉE ELISE GOLDSBERRY  
9/21



TONY  
AWARD  
WINNER

JAZZ  
JOHN PIZZARELLI  
9/28



GRAMMY  
WINNER

FAMILY  
ENCANTO-SING ALONG FILM  
CONCERT 10/14



LIVE LATIN  
BAND

COMEDY  
WANDA SYKES  
10/18



EMMY  
WINNER



AMERICA'S  
GOT TALENT  
STAR



A BROADWAY  
ITALIAN  
CHRISTMAS



VIOLINIST  
TO THE  
STARS

CLASSICAL CROSSOVER  
JACKIE EVANCHO  
11/23

FAMILY  
DON'T LET THE PIGEON  
DRIVE THE BUS! 11/24

HOLIDAY  
ANTHONY NUNZIATA  
12/6

POP/ROCK  
CAROLINE CAMPBELL  
12/14

STONY BROOK UNIVERSITY  
**STALLER**  
CENTER FOR THE ARTS

Located at Stony Brook University

(631) 632-ARTS [2787] [Follow](#) @stallercenter

Use code **GATEWAY** at checkout for discounted tickets.

**Tickets on sale now!**  
**stallercenter.com**

Use code **GATEWAY**  
at checkout for  
discounted tickets.



**DRUMMING/DANCE**  
**MALEVO**  
10/26



**FIERY**  
**THEATRICALS**

**AFRIQUE EN CIRQUE**  
**CIRQUE KALABANTÉ**  
11/9



**AFRICAN**  
**CULTURAL**  
**EXPERIENCE**

**JAZZ/BROADWAY/TAP**  
**SOME ENCHANTED EVENING**  
11/13



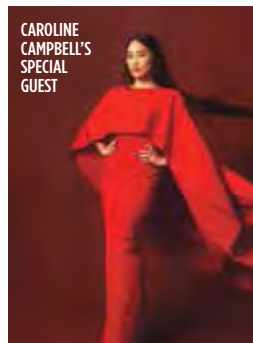
**A JAZZ**  
**INSPIRED**  
**JOURNEY**

**DANCE**  
**PERIDANCE**  
11/16

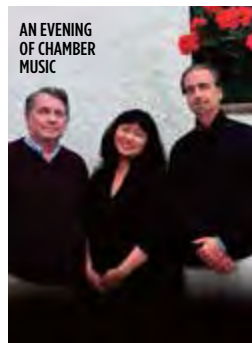


**CELEBRATING**  
**40 YEARS**

**CAROLINE**  
**CAMPBELL'S**  
**SPECIAL**  
**GUEST**



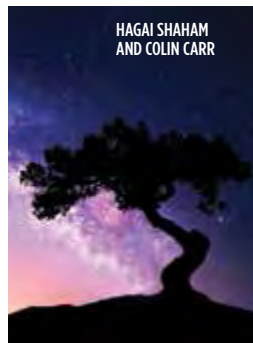
**AN EVENING**  
**OF CHAMBER**  
**MUSIC**



**SBS**



**HAGAI SHAHAM**  
**AND COLIN CARR**



**POP/ROCK**  
**CHLOE FLOWERS**  
12/14



**CLASSICAL**  
**EMERSON LEGACY CONCERT**  
9/15



**CLASSICAL**  
**SB SYMPHONY ORCHESTRA**  
10/5, 11/2, 12/7



**CLASSICAL**  
**STARRY NIGHTS**  
11/21



**THE ARTS THRIVE HERE**

**ARTS**



# Be on Stage!

THE *Gateway*  
SCHOOL FOR THE

PERFORMING

ARTS

**LEARN, LAUGH, SHINE!**

**FUN CLASSES FOR ALL AGES**

- NEW STUDENTS WELCOME • MAKE NEW FRIENDS
- MULTI CLASS DISCOUNTS AND SCHOLARSHIPS AVAILABLE

**ACTING • MUSICAL THEATRE • PRODUCTION**

**Classes Now Enrolling**



**TO LEARN MORE EMAIL: [ACTINGSCHOOL@THEGATEWAY.ORG](mailto:ACTINGSCHOOL@THEGATEWAY.ORG)  
OR CALL (631) 286-0555, EXT 5000**

# REESE'S 1900

A TRADITIONAL "OLD STYLE" PUB



Since 1971

~Serving Lunch and Dinner Monday - Saturday~

~Closed Sunday~

70 North Ocean Avenue • Patchogue • 631-289-1900 • [www.reeses1900.com](http://www.reeses1900.com)

# \$200 OFF!

**Jody's**  
**TRAVEL**  
INC  
[www.jodystravel.com](http://www.jodystravel.com)  
[jody@jodystravel.com](mailto:jody@jodystravel.com)



**VIKING**  
**GLOBUS**  
**TRAFALGAR**



Receive \$200  
off when Booking any Viking,  
Trafalgar, or Globus vacation  
through Jody's Travel  
New Bookings only  
Terms & conditions apply  
Call 516-818-2254  
for more details

# WHO'S WHO



**MARK RYAN ANDERSON** (*Stacee Jaxx*) has previously appeared in *Fiddler on the Roof* (Fyedka), *Jersey Boys* (Hank, u/s Tommy) and *Cabaret* (Victor, u/s Ernst) at The Gateway. Off-Broadway: *Stand Up for Oneself*, *Two Irishmen Digging a Ditch*, *Coffee House -*

Greenwich Village (59E59). Other credits include *Thrill Me: The Leopold & Loeb Story*, *Hamlet: The HipHopera*, *An American Worker*, and *Macbeth*. TV: "Unforgettable" (CBS). All my love to Sarah, my family and friends. Big thanks to LK at Prevail Artists. Insta: @markryananderson



**PATRICK SAINT ANGE** (*Mayor/ Ja'Keith*) is a first-generation LetHaitian American actor/filmmaker and New York native. He most recently portrayed the role of Lucas in the regional premiere of *Stranger Sings! The Parody Musical* at the

Straz Center in Tampa, FL. Saint would like to thank the talented cast, the dedicated creative and administrative team here at The Gateway Playhouse, and Stewart Talent. Now let's ROCK! @Saintparrk



**JADE BENTON** (*Young Groupie, Ensemble u/s Mother, Justice*) is an almost graduate of the wonderful Institute of American Musical Theater (IAMT is my forever home - May 18th is the graduation date!). She came to

The Gateway for *ROCK OF AGES* during her last semester, so she's grateful to have her school career end and her professional journey start with THIS!!! She started dancing because she loves to feel, to be vulnerable, so you as a viewer can also be comfortable, emerging into the experience, the story, and the fun. It's all love so let's do it together! She's ready to ROCK. Are you... well, LET'S GO!!! YEOWWWW



**ETHAN CARLSON** (*Franz*) is so excited to make his debut at The Gateway Playhouse with this incredible team, cast, and show! Broadway Tour: *Waitress* (Ensemble, u/s Ogie) Regional: Fulton Theatre, Maine State Music Theatre, Syracuse Stage,

Westchester Broadway Theatre, and more. Ethan is also an award-winning composer: check out his music wherever you stream! Thank you to Ryan, Kerstin, Cassidy, Catherine, Mallory, and Anthony at DDO, and to his incredible family. PLZ hit me with your best shot @theethancarlson



**CARLY CAVIGLIA** (*Ensemble, u/s Sherrie, Regina*) is a small-town girl from CA and is thrilled to be making her debut at The Gateway with this team! She's known for saying "Courtney, take your break!" on the *Legally Blonde The Musical National*

Tour, and select regional credits include *Kinky Boots*, *Flashdance the Musical*, *Beauty and the Beast*, and *The Last Five Years*. Syracuse University. Much love & thanks to ATB, Jake, Keith & Rachel, and her family who respond with "we're so proud of you" every time she tells them she will be playing a stripper on stage. Let's rock! @carlycaviglia



**JOSHUA SHEA COATES** (*Joey Primo, Ensemble, u/s Lonny, Drew*) is thrilled to be making his premier at The Gateway as Joey Primo and as the understudy for Drew and Lonny! He has previously appeared in *Scarlet Pimpernel* at the John W. Engeman

Theater, *A Halloween Pregame Concert* at 54 Below, *Marry Me A Little* at Lighthouse Theater Company as well as various readings and concerts in New York City. Many thanks to the entire cast, crew, production team, and musicians for their hard work and artistry in this process! Special thanks to my Mom and Dad, Samantha, friends, and family for their constant support and encouragement in this career.



**ERIK DAUGHTERMAN** (*Ensemble, u/s Franz*) is pumped to be making his debut at The Gateway Playhouse! Favorite recent credits include The Emcee in *Cabaret* and Lumiere in *Beauty and the Beast* - both at the Woodstock Playhouse. Collegiate

Credits (Shenandoah Conservatory) include Bobby Mills in *A Chorus Line*, Britt Craig in *Parade*, and Silvius in *As You Like It*. Thanks to Avalon Artists Group, Friends, Family, and Jacob! Keep up with Erik by visiting his website ErikDaughterman.com



**AARON FRIED** (*Dennis Dupree*) is so excited to be back at The Gateway! He was last seen here in 2015's *Nice Work if You Can Get It*. Tours: *The Wizard of Oz*, *Nice Work If You Can Get It*, *The Addams Family*, and *Grease*. New York: Sowa's *Red Gravy*. Regional:

Arvada Center, Ogunquit, North Shore, Theatre By The Sea. Thank you to my amazing husband, Joe, for his constant support. Thanks to the ROA creative team for this rockin' opportunity! www.aaronfried.net

# We "Set the Stage" for civilized travel to New England!

ROOM FOR OVER 90 VEHICLES EACH CROSSING

ON BOARD FOOD SERVICE & STEAMBOAT LOUNGE

NUMEROUS CROSSINGS DAILY

ENCLOSED PASSENGER CABIN

## BRIDGEPORT & PORT JEFFERSON FERRY

[www.88844ferry.com](http://www.88844ferry.com) 1-888-443-3779

We All Have a Story.

Great Employment Opportunities!

Let's Get You Back to Living Yours!

Rehab for:



Joint Replacements  
Injuries & Fractures  
Stroke Management  
Cardiac & Pulmonary Issues  
Wound Care

LEARN MORE!



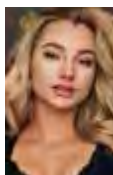
**BROOKHAVEN**  
HEALTH CARE FACILITY  
*living legends*



Visit us at  
[www.LivingLegendsHealth.com](http://www.LivingLegendsHealth.com)

Advanced Cardiac  
Telemetry Monitoring  
801 Gazzola Dr, East Patchogue

# WHO'S WHO



**KAYLEIGH HEGARTY** (*Ensemble*) is thrilled to be making her debut at The Gateway in *Rock of Ages!* Her previous credits include *SUMMER: The Donna Summer Musical* tour, *Invincible: A Glorious Tribute to Michael Jackson*, Revlon cosmetics, Rhea Raj and Maxx

Nies music videos, and more. Special thanks to her family, friends, and IAMT family for the constant support!



**JOSIAH HICKS** (*Ensemble, u/s Stacee Jaxx, Ja'Keith, Mayor*) is beyond ecstatic to rock out at The Gateway.

The phenomenal cast, crew, and team make it easy to do his job. Josiah's goals include getting the best he can at his craft and seeking his joy. He

would like to give special thanks to his brothers Elijah and John for their support and wisdom.



**DAKOTA HOAR** (*Ensemble, u/s Dennis*) The Gateway debut! National Tour: *Anastasia The Musical*

(Ensemble, u/s Dmitry), *An American in Paris* (Ensemble, u/s Henri) Regional: *Newsies!* & *West Side Story* (The LEX), *A Chorus Line* (Ivoryton

Playhouse), *The Bodyguard* & *Elvis: A Musical Revolution* (NSMT). BFA Pace University. Represented by CTG. Dakota's favorite color is green and he sends love to the most supportive friends and family.

@yesiamahoar



**ASIA KALEEM** (*Justice/Mother*) is a Musical Theatre Performer and Voiceover Artist based in New York City. Credits: Theatre: Mahalia Jackson (*Mahalia: The Musical*), Motormouth Maybelle (*Hairspray*), Armelia McQueen (*Ain't Misbehavin'*); Television: NBC,

CBS, HULU, HBO and Fox; Commercials: Nickelodeon, Twisted Tea, Foxwoods Casino, Prudential, Coke Zero, Nations Lending. Most recently Asia was featured in *Cosmopolitan Magazine*. Asia loves to meet new people! Feel free to stop by and say Hi!

IG: @iamasiakaleem, or www.AsiaKaleem.com



**IAN KNAUER** (*Hertz*) Broadway: *ANASTASIA THE MUSICAL*, *DAMES AT SEA*, *MAMMA MIA!*, *BY JEEVES* (Rev. Pinker), *STATE FAIR*. West End: *DIRTY ROTTEN SCOUNDRELS*. Off-Broadway: *THE MOST HAPPY FELLA*

(NY City Opera), *SOUTH PACIFIC* (Carnegie Hall), six shows at Encores! Ten National/ International Tours. Regional includes: *TITANIC* (Murdoch, Fulton), *ANYTHING GOES* (Lord Evelyn, The Gateway/ Ogunquit), *THE WIZARD OF OZ* (Tin Man, St. Louis MUNY), *THE PRODUCERS* (Roger DeBris, John Engeman), *MAMMA MIA!* (Sam, MSMT), *THE SOUND OF MUSIC* (Captain Von Trapp, Kilworth House). TV: *Law and Order: SVU*, *Billions*, *Harlem*. Film: *The Program*, *Kon-Tiki*, *D'ora*, *Coincidence*, *By Jeeves*. Many concerts, cabarets, and recordings around the world. Graduate of The University of Michigan. [www.ian-knauer.com](http://www.ian-knauer.com) @TheIanKnauer



**SARAH MICHELE LINDSEY** (*Regina*) is thrilled to be back at The Gateway for the second time and ready to rock!

Previous credits include *Once Upon a Mattress* at New York City Center, *The Wedding Singer*, *Sandy in Grease*, *In the Mood* (Nat'l & Int'l Tours), *Escape*

*to Margaritaville*, *Joseph and The Amazing Technicolor Dreamcoat*, *Aida*, *The Wizard of Oz* (Int'l Tour), and *AIDA* Cruises. Proud graduate of AMDA. All the time! @slindsey282



**KELLY MACMILLAN** (*Waitress #1, Ensemble, Dance Captain, Assistant Choreographer*) is beyond thrilled to be back at The Gateway! Theatre credits include the Pre-Broadway tryout of *The Karate Kid the Musical* (Stages St.Louis), Linda in *The*

*Wedding Singer* (The Gateway Playhouse), *Footloose!* (The Munny), Dance Captain of *Cabaret* (Phoenix Theatre), DeLee in *Smokey Joe's Cafe* (ACT of CT), and more throughout the country. TV Credits: Principle Dancer on Apple TV's ROAR (choreo. Marguerite Derricks). Kelly would love to thank her parents and boyfriend for their constant love and support. Kelly would also love to thank her representation: Hudson Artists, IG: xoxo\_kellymac



**MALIA MONK** (*Sherrie*) A graduate of The Boston Conservatory at Berklee, Malia is a New York-based actor and singer. Her past regional credits include Ariel in *The Little Mermaid* at Franklin Performing Arts Company and Sophie in *Mamma Mia!* at North

Shore Music Theatre and Theatre By the Sea, among others. Malia would like to thank the whole cast and crew of *Rock of Ages*, all her friends and family who support her, her team at DDO, Zack, and most importantly her Mom. Instagram; @maliamonkeyyy





# Bellport JEWELERS & RARITIES

*Historic Bellport Village*

**Your old Gold & Stones repurposed or Turned into Cash**

**We Buy-Appraise-Consult on  
All Jewelry, Coins, Stamps,  
Diamonds, Currency &  
Memorabilia**

**CUSTOM DESIGNS BY  
MASTER JEWELER & DESIGNER**

*One of a kind One at a time*

Diamonds for all - from the earth or from the lab, Gemstones, Personalized Jewelry,  
Hand-crafted Jewelry, Sports-Music-Movie Memorabilia, Unique Oddities

148 South Country Road

**Call OR Text - 631.286.7700 • [www.bellportjewelers.com](http://www.bellportjewelers.com)**

**We see *you* here.**



Residents at The Bristol enjoy a wealth of upscale amenities and engaging activities that are tailored to their unique needs and interests. Learn more about this one-of-a-kind senior living experience.

**THE BRISTAL AT SAYVILLE | 631.563.1160**

*The Bristol*  
ASSISTED LIVING  
[thebristol.com](http://thebristol.com)

Independent Living | Assisted Living | Memory Care



Licensed by the State Department of Health. Eligible for Most Long Term Care Policies. Equal Housing Opportunity.

# WHO'S WHO



**CHRISTOPHER PERSICHETTI** (*Lenny*) is thrilled to be returning to The Gateway stage! His favorite credits include Berger in *Hair* at Forestburgh Playhouse, touring the country as Mudge in *Henry & Mudge*, and Buck Wiley in *Memphis* right here at The Gateway. Currently, he can be seen at

in commercials for PointsBet, Frost Bank in Texas, and Colonial Life Insurance. Chris would like to express his gratitude to his family, friends, Joe Allen family, Jennie & Shannon at MMV Talent for their unwavering support and encouragement, and everyone at The Gateway! For his favorite drummer, Uncle Paolo. [www.chrispersichetti.com](http://www.chrispersichetti.com) @ChrisRozanski on social media.



**WOODY SCOTT WHITE** (*Drew*) is thrilled to be rocking out on stage as Drew with The Gateway. He has recently been seen across the country as Emmett in the National Tour of *Legally Blonde The Musical*, and before that, on the *Waitress* 2nd National Tour.

Other favorite credits include Max in

*Lend Me a Tenor*, Mike in *Girlfriend*, Lumiere in *Beauty & The Beast*, and traveling the high seas as a main stage performer with Disney Cruise Line. He'd love to thank his wonderful family and fantastic friends for supporting his madness. NOW LET'S ROCK!

[woodyscottwhite.com](http://woodyscottwhite.com) @woodyscottwhite

**KEITH ANDREWS** (*Director/Choreographer*) is thrilled to be kicking off The Gateway's 75th Anniversary Season with *Rock of Ages!* Keith directed and choreographed the show here in 2015 and is so excited to be back and is ready to Rock!! Keith previously directed last season's hit *Fiddler on the Roof* as well as last year's *Holiday Spectacular on Ice*, and *Evita*. Other shows directed and/or choreographed at The Gateway include *The Wedding Singer*, *Elf The Musical*, *The Bodyguard*, *On Your Feet!*, *Flashdance the Musical*, *Nunsense*, *Little Shop of Horrors*, *The Rocky Horror Show*, *Rock of Ages*, *Avenue Q*, *Saturday Night Fever*, *The Addams Family*, *South Pacific*, *Spamalot*, *My Fair Lady*, *9 to 5 The Musical* (starring Sally Struthers), *Happy Days*, *Dirty Rotten Scoundrels* (starring Joe Piscopo), *My Way*, *Cold as Ice*, *Urinetown*, and *The Full Monty*. When not at The Gateway, Keith has directed six productions of *Million Dollar Quartet*, *Buddy - The Buddy Holly Story*, *Big River*, and *Guys and Dolls*, to name a few. He directed and choreographed *A Wall Apart* - an original musical about the rise and fall of the Berlin Wall, with music and lyrics by Lord Graham Russell of the rock group, Air Supply. In educational theater, he

has directed and/or choreographed over 90 student industry showcases at the American Musical and Dramatic Academy in NYC. Keith thanks Paul for rockin' so hard, and to Kelly and Michael for all their totally awesome help with this show. Keith sends all his love to Gale and Scot - The Gateway won't be the same without you! Also, all the love to his rad wife Amy and his epic five-year-old daughter Melody who never stops rockin'! [KeithAndrewsonline.com](http://KeithAndrewsonline.com)

**MICHAEL KAISH** (*Music Director, Keys, Conductor*) is excited to be returning to The Gateway after music directing *Jersey Boys* last summer. He is the music supervisor of *Stranger Sings! The Parody Musical*, which received three Drama Desk nominations in 2023 and is now being performed all over the world. Broadway: *Summer: The Donna Summer Musical*. National Tour: *Jersey Boys*. Regional: Riverside Theatre, Straz Center, La Jolla Playhouse, Chicago Shakespeare Theatre, Rocky Mountain Rep. Proud graduate of Northwestern University. [michaelkaish.com](http://michaelkaish.com)

**KIM HANSON** (*Lighting Designer*) A lighting designer for 50 years, Kim's early career was spent largely on the road with many tours including the first A Chorus Line tour of S.E. Asia. He has designed for Gateway Playhouse on Long Island for 30+ years and often designs for The Waterfront Playhouse in Key West. Kim has designed for Chen and Dancers, New American Ballet Ensemble, Nutcracker Key West, Ballet Santa Barbara, Main Street Ballet, and was Lighting Director for the US Tours of the Saint Petersburg State Ballet on Ice. He asks you to reconsider your lawns and to stop using fertilizer and pesticides on them. Peace!

**ARTHUR ATKINSON** (*Production Stage Manager*) is thrilled to return to The Gateway, having stage managed *Fiddler on the Roof*, *In the Heights*. Selected Off-Broadway: *Partnership*, *Becomes a Woman* (Mint Theater), *The Year of Magical Thinking*, with Kathleen Chalfant (Keen Company), *God of Carnage* (Theatre Breaking Through Barriers), Liz Swados's *Nightclub Cantata* (Cell Theatre), *Paradise Lost* (Fellowship for Performing Arts), *Cagney - The Musical*; many shows at the Irish Repertory Theatre, York Theatre, The Directors Company, Cape Playhouse, et al. Toured internationally in *Fiddler on the Roof* starring Topol (Farewell tour), then Harvey Fierstein, and Theodore Bikel. A proud member of Actors' Equity Association. For Paul. Love to Lisa!

**JORDAN JANOTA** (*Scenic Designer*) This is Jordan's first production with Gateway Playhouse. Prior design credits include, *Buddy Holly: The Musical* and *Million Dollar Quartet* at John W. Engeman Theater, *Buyer and Cellar*, *Noises Off*, *Hound of the Baskervilles*, and *Into the Woods* at Northern Stage, *Kinky Boots*, *The Scottsboro Boys*, *Once, In the Heights*, and *Carrie the Musical* with Baldwin-Wallace at The Beck Center for the Arts in Cleveland OH, the TYA World Premier of *Madagascar: Live and Beat Bugs, the Musical* as well as the World Premier of *Becoming Martin* at The Coterie Theatre in Kansas City. Production Designer for the film *Theater Camp* starring Ben Platt and Molly Gordon. Thank you Keith for finally bringing me to Gateway!

**DUSTIN LAWSON** (*Wig and Makeup Designer*) A Tennessee native, Dustin spends most of his year traveling up and down the East Coast as a Hair and Makeup Artist. With over 10 years experience, he is currently the Hair and Makeup Supervisor at Stagedoor Manor Performing Arts Training Center in Loch Sheldrake, NY. Over the last four summers, some of his favorite shows he's worked on are *Mean Girls: High School Edition* (Workshop), *Evil Dead: The Musical*, and *Anastasia: A New Musical*. Aside from theatrical hair and makeup, he also enjoys working Haunt and Winterfest for Kings Dominion in Doswell, Va, where he was awarded Makeup Artist of the Year in 2022. Big thanks to his family and friends for their constant love and support of his dream! Rock on! @double.take.sfx

**MIRIAM HYFLER** (*Assistant Stage Manager*) Glad to be returning after *In The Heights!* Select credits: *Warrior Sisters of Wu* (Pan Asian Rep), *Partnership, Becomes A Woman*, *The Rat Trap*, *Chains* (Mint Theater Company), *Twelfth Night* (Music Theatre Wichita), *hang*, *Time Stands Still* (Shakespeare & Company), *Shanghai Sonatas* (Master Players Concert Series), *In The Heights* (Park Playhouse), *Death Of A Driver* (Urban Stages), *On Blueberry Hill*, *Maz And Bricks* (Origin Theatre/Fishamble), *Three Small Irish Masterpieces*, *It's A Wonderful Life*, *Woman And Scarecrow* (Irish Repertory Theatre), *The Dingdong* (Pearl Theatre Company), *author Directing author* (La Mama), *How to Break* (HERE), *Richard III*, *Henry V* (New York Classical Theatre), *Cymbeline*, *Capsule 33* (Barrow Street Theater), *I Call My Brothers*, *The Sonic Life of a Giant Tortoise*, *Ludic Proxy* (The Play Company), several seasons with Phoenix Theatre Ensemble, Pan Asian Rep, and New Century Theatre. Love to @orangefreddy.

**JANINE LOESCH** (*Costume Designer*) is a New York-based Costume Designer. Janine has designed several shows at The Gateway since 2019. Her previous designs seen at The Gateway Mainstage include *As You Like It*, *Evita*, *Summer: The Donna Summer Musical*, and *Jersey Boys*. Janine's favorite Children's Conservatory designs include *Finding Nemo*, *Matilda, Jr*, and *Legally Blonde, Jr*. Janine was the Wardrobe Supervisor on the World Premiere Off-Broadway Production of *The Last Supper Musical*, the Original Off-Broadway Premiere of *¡Americano!*, and the Off-Broadway Production of *Fiddler on the Roof: In Yiddish* with English Supertitles. She also most recently Costume Coordinated The First National Tour of *The Cher Show: A Broadway Musical*, and the National Tour of *Little Women*; The Broadway Musical.



Recycling for Zero Waste

631-696-6300

*“I subscribe to the myth that  
an artist’s **creativity**  
comes from torment”*

- David Byrne

*“I torment our graphic artists  
all the time. I guess they’re all  
super-creative thanks to me.”*

-Ken Searles



**SEARLES** GRAPHICS  
50 YEARS OF **CREATIVITY**  
1974 - 2024

**WEB • PRINT • DESIGN  
DIGITAL & TRADITIONAL MARKETING**

[www.searlesgraphics.com](http://www.searlesgraphics.com)



ENJOY QUALITY **CINEMA**  
IN THE HEART OF PATCHOGUE



Critically-Acclaimed Films

Filmed Plays & Operas

Guest Speakers & Seminars

Beer & Wine Bar

Media Literacy & Field Trips

Animation & Film Classes



Plaza Cinema & Media Arts Center • 20 Terry Street, Patchogue • (631) 438-0083 • www.plazamac.org



**Ruland**  
FUNERAL HOME, Inc.

*Proudly Supporting The Arts  
That Enrich Our Lives*

**475-0098**

500 N. OCEAN AVE, PATCHOGUE NY 11772



Let's Make Your  
**Insurance a Priority!**



*We provide great rates  
on personal and business  
insurance with friendly  
and personal service.*

-Rick Braille



**631 758 1550**

[www.bayharbourinsurance.com](http://www.bayharbourinsurance.com)

88 WAVERLY AVENUE • PATCHOGUE NY 11772



**SO HUNGRY!**

**ORDER SNACKS AND DRINKS  
NOW!**

**Use The Gateway app -  
bypass the line at intermission!**



**GET YOUR APP TODAY!**

**SCAN NOW TO DOWNLOAD**

- GET TICKETS SENT DIRECTLY TO YOUR PHONE
- PRE-ORDER DRINKS AND SNACKS
- BROWSE EVENTS AND BUY TICKETS
- SHARE YOUR TICKETS WITH FAMILY AND FRIENDS



# CHACHAMA

Upscale American Cuisine

Open Tuesday-Sunday at 4:00 PM

Prix-Fixe served daily  
\$55.00 ~ 3 courses

Wednesdays Lobster Bake  
(Starting May 29, 2024)  
\$95.00 ~ 4 courses

Thursdays Latin Night  
\$38.00 ~ 3 courses

655-8 Montauk Hwy. • E. Patchogue, NY  
631-758-7640  
www.chachamagrill.com

# Swezey

FUEL CO., INC. - EST. 1919

## Suffolk's Largest Family Owned Energy Company

- Heating & Air Conditioning
- Automatic Oil Delivery Service
- 24-Hour Emergency Service
- Budget Plans that Pay You Interest
- Expert Installations of Boilers, Burners, Hot Water Heaters & Air Conditioning Equipment



# 475-0270

51 RIDER AVE., PATCHOGUE

## The Oar

STEAK & SEAFOOD GRILLE

Live Music | Lunch | Dinner  
Catering | Outdoor Dining



264 West Ave. Patchogue, NY

• 631.654.8266 •

THEOAR.COM | THEOARLI

## CONFUSED BY MEDICARE?

Imagine A **STRESS-FREE** Experience with  
**NO COST TO YOU!**

- Are you paying too much for your prescriptions?
  - Are you turning 65 and still working?
- Are you getting everything you're entitled to?

*Choosing a Medicare Advantage Plan,  
Medicare Supplement Plan or Part D Drug Plan  
can be overwhelming.*



### Cindy Goldsher Insurance

Senior Services Specialist,  
NYS Licensed Agent & Broker

CALL: 516-578-8330

EMAIL: medicarepro65@gmail.com

WEBSITE: cindyinsurance.com

# CONTRIBUTE TO THE FUTURE OF THE ARTS

We invite you to lend your support  
and become a bigger part of our  
performing arts family.

★ **STAR BILLING**  
**\$25,000 +**

★ **LEADING PLAYER**  
**\$10,000 +**

★ **PRINCIPAL ROLE**  
**\$5,000 +**

★ **DIRECTOR'S CIRCLE**  
**\$2,500 +**

★ **FRONT ROW VIP**  
**\$1,000 +**

★ **BACKSTAGE PASS**  
**\$500 +**

★ **CAST MEMBER**  
**\$250 +**

★ **STAGE HAND**  
**\$100 +**

★ **FAN CLUB**  
**\$50 +**

**GO TO [THEGATEWAY.ORG](http://THEGATEWAY.ORG)  
AND CLICK ON SUPPORT OR  
CALL (631) 286-7027 FOR MORE  
INFORMATION**

*The Performing Arts Center of Suffolk County  
is a 501(c)3 non-profit organization - all  
donations are 100% tax-deductible. Thank you  
for your contribution to the future of the arts!*

To adjust the way your name is  
listed here, please email

**[Scot@TheGateway.org](mailto:Scot@TheGateway.org)  
or call 631-286-7027.**

## **BOARD MEMBERS**

Paul Allan  
Gale Edwards  
Diane Giattino  
Ann Nowak  
Ken Searles  
Terry Tutthill

## **STAR BILLING**

County of Suffolk Omnibus  
Ravenel Curry  
The Knapp Swezey  
Foundation  
New York State Council  
on the Arts

## **LEADING PLAYER**

AARP  
County of Suffolk  
Economic Development

## **PRINCIPAL ROLE**

Ingrid Arneberg  
Existence Media  
NYU Langone Health  
Searles Graphics

## **DIRECTORS CIRCLE**

Steve, Jackie, and  
Sam Babyak  
Brookhaven Healthcare  
Facility  
In Memory of  
Susan Smalling  
and Linda Goldfarb  
Maggio Environmental  
James and Robin Martinsen  
Dave and Debbie Morrissey  
Phylis Natoli and  
Debbie-Ann Chang

## **FRONT ROW VIP**

Susan Belcher  
Paul and Ellen Bonfanti  
Estella and Robert Clasen  
Charles and  
Linda desJardin  
Lexi Diamond and  
Jeff Fuisz  
Gale Edwards  
Fiori Enterprises

Flanzer Construction Inc  
In Memory of  
Susan Smalling  
and Linda Goldfarb  
James and Diane Giattino  
Joyce Hanly  
Dr. David Hensen  
DiGrace Hoiland  
Susan Holmes  
Vincent and Linda Leuzzi  
Gloria Mancuso  
and Glenn Dielmann  
Joe and Tricia Manno  
Glenn and Louise Mehrtens  
Gary and Sue Nappo  
Veronica O'Neill  
Paumanok Veterinary  
Hospital  
Joseph Rokasz  
David Tobachnik  
and Alice Anne Humphrey  
Elizabeth and  
Eric Torbenson  
Frank and Marie Trotta  
George Tvelia  
Swezey Fuel Co., Inc.

## **BACKSTAGE PASS**

Kent and Connie Adee  
Bill Allan and  
Mary Lou Maloney  
Joanne Bennett  
Tom and Sara Jane Corwin  
John and Erna Cuenin  
Mary Jane and Brian Cullen  
Susan Daconto  
Diana and Jim Davies  
Derby Floors and Rugs  
Cheryl A. Felice  
and Lorraine Kuehn  
Anna Lou Fletcher  
Judy Fortuna-Ince and  
Peter Ince  
Catherine Gleason  
Ed Graziano and  
Doug Carabe  
Debbie and Sean Hunter  
Ms. Julie Lachman  
Ann Marie and Gary Loesch  
Margie K Ludewig  
Joan and Harry Miller



Michael and  
Hwasoon Mullaney  
Next Gen Advertising  
Kathe and Bob Palermo  
Ralf Petersen  
Dr. Mary Koslap-Petraco  
Mary Procopio  
Maria Rignola- Step In  
Time Dancewear Inc.  
Billy Rignola  
Lourdes Rodriguez  
Robert and  
Pamela Rosenberg  
Barbara and Eric Russo  
Catherine and  
Adam Schneider  
John Shea Jr. and  
Diane Crean  
Kathy Smolansky  
Swazi Stokes and  
Dick Vento  
Jonathan Turell  
Terry Tuthill  
Candace and  
Thomas Usztoke  
Theodore Weinberg  
Neil Weingarten  
Suzanne Whelan  
Peter E. Williams

### **CAST MEMBER**

Linda A. Carr Relethford  
Nancy Duncan and  
Jamie Moog  
Lauren Edwards  
The Flagg Family  
Laurie Fosmire  
Melissa Fricke  
Mr Joe Governale  
Ada Graham  
Jeremy Grand  
Phil Gucci  
Marilyn Hamilton  
and Joseph LaGennusa  
Kathleen Hartman  
Kim Hendrickson  
Judith Hope  
Susan Kahl and  
Jim Vaughan  
Chris Kelley and  
Stuart Post  
Jane Love

Jesse Oxfeld  
Palace Lighting  
Electrical Contractor Inc.  
Jean Pokorny  
June Potter  
Sandy Reifel  
Amanda Rofrano  
David Ruttura  
Nick Sekela  
Judith Steinberg  
In Memory of  
Joseph Van de Wetering  
Virginia E. Waterman  
Allen and  
Angela Welcome  
Bruce Winant

### **STAGE HAND**

Collin Aloï and Family  
Richard and  
Chantal Berman  
Jean Coakley  
Kathy and Tom Cullen  
Gloria Cummings  
Dankievitch Family  
Donna Darling  
Doreen DeDomenico  
Patricia Dima  
Raymond Ebarb  
Robert and Donna Esp  
Joseph and  
Maryellen Gathard  
Heather Greco  
Paul Haines  
Michael Hertz  
Carol and Shelley Holt  
In Honor of Art Bellante  
Richard and  
Maryann Hoshino  
Robert Judem-Cautin  
Nathan King  
Susanna Klein  
Janice F. Klein  
Vasili Kreatsoulas  
Lorraine Kuehn  
Tom and Pamela Lerner  
Mary Louise Maloney  
Gail Mancuso  
Regina Mascia  
Michael Mastroddi  
Legislator James  
Mazzarella

Lisa and  
George Meyer-Fertal  
Joe Minutillo  
Gary Murphy  
Christine Novelli  
Kevin and Joy O'Brien  
Martin J. Olsen  
Ann and Bill O'Shea  
Lou and Jeanette Paolillo  
Pegg Family  
Alice M. Quinn  
Angela and Hector Roman  
Maria Ruffilli  
Frank and Judith Russo  
Marianne and  
Frank Schmidt  
Maryann Schmidt  
Patricia Sikorski  
Mary Ellen Smith  
Donald Steckler  
Angela Stelling  
Joe Sturiale  
Laura Terwilliger  
Legislator  
Dominick Thorne  
Susan and  
Magnus Thorstenn  
Candace and  
Thomas Usztoke  
Vlachos Family  
Paula Warmuth  
Richie and  
Linda Yakavonis  
Curt and  
Judy Youngerman  
Kathy and Ira Zankel

### **FAN CLUB**

Rosanne Annicaro  
Maureen Brogan  
Richard Cebulski  
Carol Chester  
Amelia Chiamonte  
Eileen Clancy  
Anne Cohalan  
Elizabeth Coleman  
Tara Coleman  
Tom and Sara Corwin  
Tim Edwards  
Janice Eulau  
Dan Fink  
Ms Roz Goldberg

Felix Iasevoli  
Carolyn and Bruce Jonas  
Diane Koerber  
Cori Kopke  
Maura Lebron  
Robert Lello  
R&L G. C. Paint &  
Decorating Corp  
Sara Morse  
Stan and Joan A. Novack  
Mr. and Mrs.  
Robert G. O'Neill  
Michaela Patek  
Anthony and  
Rachelle Psaris  
Ginny Rossetti  
Ruth Simon  
Judith Singleton  
Lynn Stingo  
Kathleen Twomey-Hoge  
Joseph Varsalona  
Stephanie Vertichio  
Timothy Watkins  
Genie and Carol Weisman

### **\*Reflects Current FY Donations**

# PERFORMING ARTS CENTER OF SUFFOLK COUNTY

## BOARD OF DIRECTORS

Chair ..... Ken Searles  
Vice-Chair ..... Terry Tuthill  
Secretary ..... Gale Edwards  
Directors ..... Paul Allan, Diane Giattino, Ann Nowak

## ADMINISTRATIVE

Executive Artistic Director..... Paul Allan  
Director of Business Operations..... Jeff Bellante  
HR/Payroll ..... Gale Edwards  
Casting Director.....Rachel Armitstead  
Director of Development/  
Public Relations ..... Scot Patrick Allan  
Development Associate ..... Susan Daconto  
Company Manager ..... Collin Alois  
Associate Company Manager ..... Chris Smith  
Casting Assistant ..... Kaitlyn LaGrega  
Production Photographer..... Jeff Bellante  
Compliance Officer ..... Annmarie Allan  
Musician Contractor..... Peter Pece

## CREATIVE

Director/Choreographer..... Keith Andrews  
Musical Director ..... Michael Kaish  
Assistant Choreographer..... Kelly MacMillan  
Lighting Designer..... Kim Hanson  
Costume Designer..... Janine Loesch  
Scenic Designer ..... Jordan Janota  
Sound Designer..... Ben Takitch  
Properties Designer ..... Brittany Loesch  
Wig, Hair & Makeup Designer.....Dustin Lawson

## EDUCATION

Acting School Manager .....Rachel Armitstead  
Acting School Administrator.....Kaitlyn LaGrega  
Teaching Staff.....Rachel Armitstead, Meghan Fawcett,  
Kaitlyn LaGrega, Michael Mastroddi, Joe Minuttillo,  
Cullen Titmas, Amy Woschnik, Kaelem VonCamper  
Accompanists ..... Margaret Murphy, Peter Pece,  
Anthony Vetere

## VOLUNTEER USHERS

Cheryl Becker, Violet Bezler, Camille Brideson,  
Suzette Ciminelli, Lorrie Clifford, Tim Cole, Cornelia D'Aureli,  
Janet David, Al Ely, Pat Ely, Jody Evola, Kristina Farmer,  
James Ficker, Patti Ficker, Theresa Gabriel, Joyce Gambina,  
Gerl Gerns, Linda Good, Sue Greenleaf, Janet Kelly,  
Robert Koenig, Carol Krussman, Muriel Lanier,  
Patricia Leask, Marie Lena, Diane Lovizio, Eileen Maida,  
Beatrice Marelli, Rita Mendrina, Connie Merced,  
Carol Niessing, Linda Okolowich, Judy Onorato,  
Celmira Pachon, Kathy Pernice, Peter Pernice,  
Annette Reeve, Sandy Reifel, Peggy Rodgers, Debra Sanda,  
Harold Schiffman, Linda Villano, Diane Warren,  
Joseph Warren, Elizabeth Weeks

## PRODUCTION

Production Manager..... Brian Loesch  
Production Stage Manager..... Arthur Atkinson  
Technical Director ..... John Sabo  
Properties & Paints Supervisor ..... Brittany Loesch  
Lighting & Electrics Supervisor.....Riley Noble  
Costume Shop Manager ..... Janine Loesch  
Audio Engineer ..... Ben Takitch  
Wig & Makeup Supervisor .....Dustin Lawson  
Rentals Manager/  
Assistant Production Manager ..... Tony Tambasco  
Assistant Stage Managers..... Miriam Hyfler, Greg Coulter  
Assistant Technical Director ..... Stuart Chapin  
Wardrobe Supervisor ..... Cory Calvo  
Lead Staff Carpenter ..... Katie Cully  
Properties and Paints Assistant..... Maige Anderson  
Staff Electricians.....Dylan Sepulveda, Carly Nordaby  
Staff Carpenters ..... Jacob Bubeck, Leo Faitakes,  
Emily Rinfret, Randal Bogues, Greg Coulter  
Audio Assistant ..... Leonardo Mignola  
Costume/Wardrobe Staff ..... Lauren Buzzell, Allison Peavy  
Properties & Paints Apprentice .....Karli Knepfler  
Wigs & Makeup Apprentice .....Ashley Sirlin

## BOX OFFICE

Box Office Manager..... Laurie Cole  
Box Office Manager/  
Front of House Manager ..... Joanne Tambasco  
House Manager ..... Jamie Haughney, Matthew Kraut  
Box Office.....Abby Beodeker, Janet Caponi,  
Phyllis Kaye, Katie Ford-Mehrkens  
Group Sales.....Laurie Cole, Joanne Tambasco  
Front of House Staff..... Alexa Allan, Luke Allan,  
Savannah Baker, Ralph Bianco,  
Caitlin Fawcett, Meghan Fawcett, Derek Griffin,  
Brian Hausle, Joe Kraus, Danny Parr, Maya Ryan  
Joey Salerno, Sebastian Santiago

## FACILITIES

Facilities Manager..... John-Paul Baker  
Cleaning Staff ..... Jasper Bailey  
Grounds Maintenance ..... HTM Landscaping

### GATEWAY PLAYHOUSE

would like to thank our volunteer staff for their  
dedication and support. It is much appreciated.

IF YOU WOULD LIKE TO JOIN  
OUR VOLUNTEER STAFF  
CALL 631-286-0555



**All we do is all for you.**

**We focus entirely on the needs of children,  
so Jenna is ready for a lifetime of adventures.**

You can't trade places with your little ones when they're sick,  
but you can bring them to experts who understand and care for kids.  
As Suffolk County's only children's hospital, we are physicians,  
nurses, therapists, educators and researchers with  
expertise to match our compassion.



**Stony Brook Children's**

[stonybrook.info/kids-health](https://stonybrook.info/kids-health)

# THE BELLPORT

*Steps Away from the Gateway Playhouse*



*~ New York Times Review*

631.286.7550 | [www.thebellportrestaurant.com](http://www.thebellportrestaurant.com)

159 SOUTH COUNTRY ROAD | BELLPORT NY 11713