

THE *Gateway*

PRESENTS



JANUARY 23 - FEBRUARY 15



TOP 1%

in the Nation and

THE ONLY ON LONG ISLAND

Stony Brook Medicine has received the highest level of achievement from Healthgrades, as one of America's 50 Best.

This achievement places Stony Brook among the top 1% nationwide for overall excellence in care and is the only on Long Island to be ranked among America's 50 Best. Stony Brook University Hospital, Stony Brook Southampton Hospital and Stony Brook Eastern Long Island Hospital are collectively assessed by Healthgrades and share the America's 50 Best Hospitals Award. It's a reflection of our commitment to bring the best in care to our patients. And it means that our patients can feel confident, knowing they're receiving such high-quality care.



Learn more at
[stonybrook.info/
top-hospitals](https://stonybrook.info/top-hospitals)

All we do is all for you.



Stony Brook Medicine



PAINTERS'
Restaurant

Join us for

BRUNCH LUNCH DINNER

.....

Serving Brunch Saturday & Sunday
11am - 3pm

.....

**FOR CATERED EVENTS
CALL OUR CATERING DIRECTOR
ZACH 631•923•8860**

2 MILES EAST OF GATEWAY PLAYHOUSE
416 SOUTH COUNTRY RD. BROOKHAVEN, NY 11719
631-803-8593



THE Gateway

There are years when the ground seems to shift beneath our feet.

Jobs change, families evolve, the headlines blur between excitement, disbelief and fatigue. Plans we thought were solid turn out to be tentative, and even the places we count on for escape feel more precious, more needed than ever before. In those moments, one question keeps returning: what holds us together when everything else is in motion?

At The Gateway, the answer has always been the same: we gather.

We gather in the dark, shoulder to shoulder with strangers who begin to feel like neighbors. We listen to stories of people pushed to their limits, and we watch what they choose to do next. They fall in love when it's dangerous. They tell the truth when it's costly. They make music when silence would be easier. They open their doors when fear says to lock them. And as they move through upheaval, they remind us how to move through our own.

The coming year at The Gateway is built around that idea: connection through upheaval.

Every story you see on our stage in 2026 will, in its own way, follow people standing on the edge of something—of loss, of change, of possibility—and reaching out instead of shutting down. You'll meet characters who risk everything for friendship, for family, for community, for the belief that together we can become more than the sum of our separate struggles. You'll see lives upended by forces far beyond anyone's control, and you'll watch what becomes possible when people refuse to face that alone.

You will also see yourselves.

You'll recognize your own questions, your own doubts, your own late-night worries about the future. And in the same breath, you'll feel the electricity of a live orchestra, the hush before a spotlight rises, the collective inhale of an audience leaning in at the same moment. That is the quiet miracle of theatre: nothing on stage changes your actual circumstances, but you walk out changed anyway. You stand a little taller. You remember that you are not navigating this era alone.

In 2026, The Gateway is recommitting to being more than a venue. This is your gathering place.

A place where Long Island's stories and the world's stories meet. A place where you can bring your kids, your parents, your partner, your friend who "doesn't usually like musicals," and give them a night that feels both like an escape and a homecoming. A place where generations share the same armrest and, for a few hours, the same heartbeat.

Since you don't yet know all the titles lined up for 2026, that's all right. What you can know is this:

- You will encounter courage in unexpected forms.
- You will hear music that lifts you and words that unsettle you in the best way.
- You will see people fall apart and find a way forward, sometimes because of each other, sometimes in spite of everything around them.

And every time the curtain falls, you will be surrounded by others who just took that journey with you.

As we step into this new season, The Gateway invites you to choose connection, again and again. Bring someone who needs a night out. Strike up a conversation in the lobby. Become a member, a donor, a champion for the arts in this community. In a world that keeps telling us to retreat into our own corners, let's do something radical: let's keep showing up for one another in the same room.

The times may be uncertain. The stories we'll share will not pretend otherwise. But together, in this theatre by the bay, we can practice what it means to live bravely, love deeply, and hold fast to one another when the ground moves.

Thanks for being here.

Paul Allan



Executive Artistic Director
The Gateway, Performing Arts Center of Suffolk County



THE RAT PACK

Stylish Innovators on the Strip



- The moniker “Rat Pack” originally referred to an inner circle of Hollywood superstars who embraced honesty and good character. Led by Humphrey Bogart through the 1950’s, the informal group included Bogart’s wife Lauren Bacall, Judy Garland, Cary Grant, Rex Harrison, Katharine Hepburn, Sid Luft, Frank Sinatra and Spencer Tracy. Sinatra assumed leadership of the group after Bogart’s death in 1957.

- Sinatra’s Rat Pack (with Dean Martin, Sammy Davis Jr., Joey Bishop and Peter Lawford) embodied diversity. One was black, one was Jewish, one was British and two were Italian. Three were second generation immigrants and four were raised in ethnic urban neighborhoods during the Depression. One had significant nerve damage in his lower arm and another had a prosthetic eye.

- The Summit at The Sands lounge act played a four week engagement while shooting the original Ocean’s 11. It is considered the signature moment of The Pack and is recreated in The Rat Pack is Back! After filming, they partied through two sold-out shows each night at The Sands Hotel & Casino. The fun continued late into the night, and the group slept during the day, waking only if they were needed on set.

- “The Summit” refers to the tense Paris Summit between Cold War-era leaders Charles de Gaulle, Dwight D. Eisenhower, Nikita Khrushchev and Harold MacMillian.

- The Pack frequented casinos along the Vegas Strip before and after their shows, many of which still denied entry to blacks, including high-profile entertainers like Sammy Davis Jr. The ring-a-ding group boycotted segregated establishments in full sight of their press attaché until the entire swinging conglomerate was allowed in.

- The Summit’s pop-culture phenomenon crescendoed when presidential candidate John F. Kennedy attended the semi-improvised show. Rat Pack-er Peter Lawford, christened “Brother-in-Lawford” by Sinatra, was Patricia Kennedy’s husband. Later that year, Sinatra & friends played a key role in the Kennedy campaign.

These materials are part of the UNLV Libraries Digital Collections and are included under the fair use and creative commons exemptions. They are restricted from further use.

THE *Gateway*

Director of Production
BRIAN LOESCH

Executive Artistic Director
PAUL ALLAN

Director of Business Operations
JEFF BELLANTE

General Manager
JOANNE TAMBASCO

Associate Artistic Director
MICHAEL BAKER

Director of Development
SUSAN DACONTO

Casting Director
RACHEL ARMITSTEAD

Company Manager
CHRIS SMITH

presents

THE RAT PACK IS BACK!

Starring

JOHNNY EDWARDS **CHRIS JASON**
KYLE DIAMOND **CALLI JACK**

Executive Producer
ARTHUR PETRIE

Written & Produced by
DICK FEENEY

Musical Director
LON BRONSON

Lighting Designer
KIM HANSON

Scenic Designer
DENNIS R BERFIELD

Production Stage Manager
IZZY MANGIARACINA

Conductor
BRIAN SWEENEY

Featuring

THE CAST

Dean Martin	JOHNNY EDWARDS
Sammy Davis Jr.....	KYLE DIAMOND
Frank Sinatra	CHRIS JASON
Barbie	CALLI JACK
Production Stage Manager	IZZY MANGIARACINA

***The Rat Pack is Back!* is performed in two acts with a 15-minute intermission**

THE BAND

Conductor & Piano	BRIAN SWEENEY
Woodwinds	MITCH KAMEN
Trumpet 1	RON FOX
Trumpet 2	STEVE HENRY
Trombone.....	ELIAS ASSIMAKOPOULOS
Bass.....	FRANK HANSEN
Drums	ELLIS HOLMES



ANY VIDEO AND/OR AUDIO RECORDING OF THIS PRODUCTION IS STRICTLY PROHIBITED.

FIRE NOTICE: The exit indicated by a red light and sign nearest to the seat you occupy, is the shortest route to the outside. In the event of fire or other emergency, please do NOT run, WALK to that Exit. However, under normal circumstances, when leaving the Theatre, use the center rear exits. **SMOKING** is prohibited in the BUILDING, as required by the Suffolk County NO SMOKING Ordinance. Smoking in any area designated "No Smoking" renders the offenders subject to a fine, or imprisonment, or both.

PORTERS

on the lane

COCKTAILS  RESTAURANT  CATERING



FOR RESERVATIONS *or* MORE INFO CONTACT US

phone ✦ 631 — 803 — 6067

email ⚓ portersbellport@aol.com

NEW MENUS - SPECIALS - MUSIC - UPCOMING EVENTS

HOURS *AND* MORE VISIT ...

website ⚓ www.portersonthelane.com

Address - 19 Bellport Lane Bellport Village NY 11713

SOMETHING SWEET FROM ACROSS THE STREET

Carla Marla's

ICE CREAM PARLOR & CANDY SHOP



one free topping w/ this coupon

CALL: 631-803-6630

email: carlamarlas@hotmail.com

8 BELLPORT LANE, BELLPORT VILLAGE, NY 11713

MUSICAL NUMBERS

ACT I

OVERTURE
WHERE OR WHEN
WHEN YOU'RE DRINKING
VOLARE
THAT'S AMORE
YOU'RE NOBODY TIL SOMEBODY LOVES YOU
THAT OLD BLACK MAGIC
HEY THERE
SOMETHING'S GOTTA GIVE
CANDYMAN
SAM'S SONG
WHAT KIND OF FOOL AM I

There will be one 15-minute intermission.

ACT II

WHEN YOU'RE SMILIN' (Instrumental)
GET ME TO THE CHURCH
FLY ME TO THE MOON
I'VE GOT YOU UNDER MY SKIN
I'VE GOT THE WORLD ON A STRING
ME AND MY SHADOW
LUCK BE A LADY
THAT'S LIFE
LADY IS A TRAMP
BIRTH OF THE BLUES
I'M GONNA LIVE UNTIL I DIE
MY KIND OF TOWN
SWEET GEORGIA BROWN (Instrumental)



OUR BOARD OF DIRECTORS

SCAN TO READ
FULL BIOS



KEN SEARLES
Chairperson



TERRY TUTHILL
Vice-Chairperson



GALE EDWARDS
Secretary



PAUL ALLAN
Director



DIANE GIATTINO
Director



MARY GIATTINO
Director



ANDREW "A.J." LEBENNS
Director



JOSEPH MINUTILLO
Director



ANN L. NOWAK
Director



DAVID RUTTURA
Director

JDN | Wealth Management

Accredited Investment Fiduciary (AIF®)
Chartered Retirement Plan Specialist (CRPS®)
Certified Financial Planner (CFP®)

Where do you want to go?

We'll get there together.

*Building tailored investment strategies for over 14 years
using stocks, municipal bonds, annuities, and more.*



Jeff Nagel
AIF®, CFP®, CRPS®
Owner/Financial Advisor

OUR FOCUS:

- Protecting what you've built
- Turning savings into reliable income
- Keeping more of what you earn through tax-smart investing
- Managing and balancing risk over time

Trusted guidance.
Clear planning.
Fiduciary advice.

*Call us today to
schedule a complimentary
review meeting!*

Visit our website for
more information.



Located in **BELLPORT**

16 Station Road, Suite 11 | Bellport, NY 11713
Tel: 631.434.5561 | jnagel@jdnwealthmanagement.com
www.jdnwealthmanagement.com

*Securities offered through Cetera Wealth Services LLC, member FINRA/SIPC.
Advisory services offered through Cetera Investment Advisers LLC, a registered
investment adviser. Cetera is under separate ownership from any other named entity.*

JC's Restaurant



BRUNCH • DINNER • TO-GO CATERING PACKAGES

PRIVATE PARTIES

Rehearsal Dinners, Corporate Parties, Birthday Parties,
Christmas Parties, Bridal Showers

**Two convenient locations just minutes
from The Gateway. Come enjoy dinner before
or after the show.**

2 Country Club Drive
Manorville, NY 11949

(631) 909-3525

jcsrestaurant1@gmail.com

www.jcsmanorville.com

 [@jcsmanorville](https://www.instagram.com/jcsmanorville)

1086 Mastic Road
Mastic, NY 11950

(631) 772-4680

jcsrestaurant1@gmail.com

www.jcsmastic.com

 [@jcsmastic](https://www.instagram.com/jcsmastic)

Now there are 4 ways to
"Listen to Lawrence" Davidow explain
Elder Law, Special Needs
and Estate Planning.

1



WATCH the
Listen to Lawrence
seminar in its entirety
on our website.

2



LISTEN to the *Listen to Lawrence* Podcast series, to find out the answers to commonly asked questions. Find it on our website or wherever you get your podcasts.

3



The Listen to Lawrence Letter

LEARN from the *Listen to Lawrence* Letters that are released twice a week – sign up at info@davidowlaw.com to receive them in your inbox.

4



READ the *Listen to Lawrence* Book: *Planning to Keep It* now available on Amazon.

DDSS

DAVIDOW, DAVIDOW, SIEGEL & STERN, LLP

Long Island's Elder Law, Special Needs and Estate Planning Firm

1455 Veterans Highway - Suite 203, Islandia, New York 11749 | Tel. (631)234-3030

www.davidowlaw.com Additional office located in Mattituck

WHO'S WHO



KYLE DIAMOND (*Sammy Davis Jr.*) comes from a musical family. His father was a pianist who fronted his own band, his grandfather a guitarist, and his brother, Kenny Davis, is a very talented and respected musician who has played with

some of the greats from the Motown era and toured with the Ellington band. As a teenager, Kyle co-founded what would become a very popular Cleveland area band, The Pacesetters, and later another group, Phantasy, which performed in nightclubs around the country. Most recently, Kyle has found a home performing in the casinos of Las Vegas while continuing his love of songwriting. Kyle has been performing as Sammy Davis Jr. with *The Rat Pack is Back* in his role of a principal star for over 20 years.



JOHNNY EDWARDS (*Dean Martin*) has made himself a name in Las Vegas as sort of a chameleon in the entertainment world. This talented actor has portrayed Elvis, Roy Orbison and even Sir Elton John in shows in Las

Vegas and around the world. When it came time to step up to the plate as Dean Martin, Johnny jumped at the chance without hesitation. He has since received much acclaim for his uncanny recreation, appearing in several shows in Las Vegas as Dean Martin, including *Ole Blue Eyes* and *Vegas Headliners*. It was around this time that Johnny had set his sights on the *The Rat Pack is Back* which also makes its home in Vegas. Through hard work and perseverance, Johnny fine tuned his portrayal of Dean Martin to the level that would bring him to their stage, side by side with some of the most talented professionals in the business. Being a perfectionist, he is always looking to bring a new dynamic to his portrayal of Dean Martin. Making it look easy is probably the hardest thing to do, and that is the challenge that makes Johnny set his goal to be the best.



CHRIS JASON (*Frank Sinatra*) has been a professional musician for over 20 years. Since the age of 6, Chris has been infatuated with the Great American Song Book and the most influential vocalist of the 20th century, Francis Albert

Sinatra. Chris has studied the music of Sinatra for years and has a passion for the lyric and a fine respect for the music itself. Every performance is kissed with the essence of Sinatra, every lyric sung with a passion for the music, phrasing, tone and timber felt with every note sung, some even say his natural speaking voice on stage takes you back to the days of the “Chairman of the Board” at the Copa Room at the Sands Hotel in Las Vegas. Chris achieved international status after having performed with a full 40 piece orchestra conducted by internationally acclaimed symphonic conductor Boris Brott, along with an array of world-class musicians that make up the National Academy Orchestra of Canada. There are many that impersonate, but Chris is an absolute natural with his ability to capture every nuance, mannerism and spirit of the man that will always be revered as the greatest vocalist of the 20th century. Chris just celebrated his 10 anniversary as a cast member of *The Rat Pack is Back*.

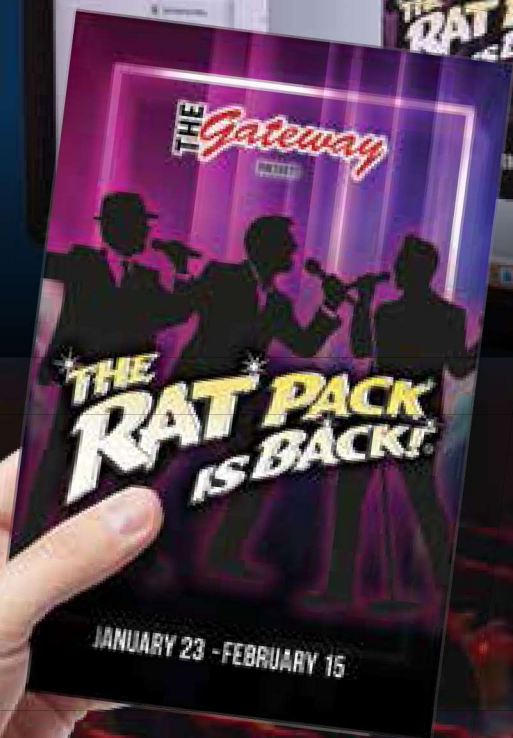


CALLI JACK (*Barbie*) is a New York City-based dancer and performer. She began her journey into the world of professional dance at the age of ten, working with Debbie Allen in the production of *Brothers of the Knight* in

Philadelphia. She later continued her professional work at Six Flags Great Adventure, with holiday themed shows *Frost* and *Unleashed*. Calli has danced with NYC recording artists Dan Kiernan, Corvaa, SONIWITHANEYE, and the “Million Dollar Barbie” herself Nikki Exotika. She has performed in the Borgata Hotel and Casino’s *Motown Forever*

Continued on page 16

PERFORMANCE MEETS PRODUCTION



**YOU'RE ENJOYING THE
SHOW. YOU'RE HOLDING
OUR WORK.**

We believe the best way to demonstrate our capabilities is to put them right in your hands. Searles Graphics is proud to handle design and printing for The Gateway. When you're ready for a marketing partner who can handle the big picture and the fine details, look no further.

Experience the Quality



**SEARLES
GRAPHICS**

www.searlesgraphics.com

56 Old Dock Road, Yaphank, New York 11980 • 631-345-2202

WHO'S WHO

show, as well as Las Vegas' *MJ LIVE* and *The Rat Pack Is Back*. Calli has toured internationally with the Star Wars burlesque parody *The Empire Strips Back* and has assisted top touring illusionist David Caserta in his *Haunted Illusions* show. More recently, Calli has been performing in Brooklyn at the Level Restaurant & Bar dinner show as a featured dancer and soloist. Calli is thrilled to be rejoining the Rat Pack cast here on the East coast, and to share her love of music and theatrics with the audience.

KIM HANSON (*Lighting Designer*) has done lots of lighting for lots of tours, national and international. Nowadays he is based in Connecticut where he does a lot of local freelancing. Additionally, he is the resident designer for The Waterfront Theatre and the Paradise Ballet, both in Key West, and designs lighting as often as possible for Ballet Santa Barbara. Of late, he spent a fair amount of time as Production Manager for the Stephen Siller Foundation—producers of the annual Tunnel to Towers race and of many concert fundraisers, featuring Gary Sinise and the Lt. Dan Band as they help build high-tech homes for disabled vets across the country. In his spare time, he is Chairman of his local school board (and he also happens to be the only 3-peat winner of the annual Gateway 4th of July pool tournament). The first show he designed for The Gateway was *Baby* in 1985. The list of dear life-long friends he has had the luck to meet and work with here is long indeed; a big thanks and love to every one of you and to the audiences who make this all possible!



Lon BRONSON (*Musical Director*) Emmy-nominated Lon Bronson is one of the most highly sought after musicians in the country; functioning as musical director, trumpeter, conductor, arranger/composer, and producer for national TV,

headline performers, production shows, and large-scale corporate events. Lon has afforded

musical direction to a wide range of celebrities—from David Cassidy and Faith Hill, to Triumph The Insult Comic Dog and *The Rat Pack Is Back*. He is currently the conductor for *The Symphonic Rock Show*. Lon was selected to conduct the Orchestra for Caesars Palace 50th Anniversary Gala Concert, which featured such luminaries as JLo, Donny & Marie, Bill Medley and Tony Bennett. Lon's primary vehicle for bringing world-class music to Las Vegas has been The Lon Bronson Band. This iconic 14-piece horn-infused band is well known nationally for their eclectic mix of rock, soul, and blues. Formed in 1990, they remain Vegas' longest running band, celebrating their 27th anniversary, and are in residence at the prestigious Smith Center, Las Vegas' new concert hall and arts center, where they have recently completed their 31st sold-out concert. Their national TV credits are numerous, and include performances on HBO, TBS, and Comedy Central. They have recorded with the legendary Tower Of Power band. As Drew Carey once famously said of them, "This is a house band so good, you'll never want to leave the house."



DICK FEENEY (*Producer*) In a career that spans over 40 years, veteran entertainment giant Dick Feeney has produced over 37,000 performances in Las Vegas, major theatrical venues across America, and countries around

the world. Feeney grew up in the Boston area, in Rockland, Massachusetts, where in June of 2009 he was inducted into the Rockland High School "Academic Hall of Fame." After years of touring with the highly popular Boston-based band the Lewis & Clark Expedition, Feeney formed his own group, Gemini, and continued developing his talent and skills as a singer, dancer, musician and super showman, making him one of the country's top nightclub entertainers. He produced his first critically acclaimed show in 1981, *Lullaby of Swing* in Honolulu, Hawaii. He then successfully toured the production before settling in Las Vegas in 1985, where he opened the long-running *An*

Continued on page 22

THE BELLPORT

Steps Away from the Gateway Playhouse



~ New York Times Review

631.286.7550 | www.thebellportrestaurant.com

159 SOUTH COUNTRY ROAD | BELLPORT NY 11713



SUTTON LANDING

AT PATCHOGUE

A 55+ LUXURY
RENTAL COMMUNITY



Where Resort-Style Living Meets Community

Lifestyle Centered Around You

Our thoughtfully designed campus places everything you need right here - from resort amenities to social activities - all set within beautifully landscaped grounds in a pet-friendly community creating a vibrant, maintenance-free lifestyle where your only job is to enjoy every day.



FITNESS CENTER
SWIMMING POOL
PICKLEBALL & BOCCE BALL COURT
BILLIARDS & CARD ROOMS
CLUBHOUSE WITH SPORTS BAR

WALKING PATH
DOG PARK &
PET GROOMING STATION
PUTTING GREEN
OUTDOOR ENTERTAINING SPACE



Sutton Landing at Patchogue

631-310-5700 | suttonlanding.com



La Plage

BISTRO

Classic French Bistro

Traditional French Comfort Food
Craft Cocktails, Beer & Local Wines

OPEN

Sunday, Monday,
Wednesday, Thursday -
12pm-9pm

Friday & Saturday -
12pm-10pm



Every Monday, Wednesday & Thursday

A Quick Lunch 11-3
2 Course Prix Fixe, with a
warm Cookie
\$29

The 'Gateway'
First Glass of Wine
\$5

Happy Hour 4-6
Half Price
Wine & Beer

Raw Bar Specials
\$2 Oysters
\$1 Littleneck Clams
\$2 Jumbo Shrimp

**Holiday Cocktail Parties, Catering and
Private Events Available!**

Call for Reservations | 934-451-3075

14 Station Road, Bellport Village
www.laplagebellport.com | @laplagebistrobellport

Take the **SHOW** on the **ROAD**

Your **SOURCE** for **FORD** Sales & Service



Enjoy our expanded **MOBILE SERVICE PROGRAM:**

- Routine maintenance right at your door – oil changes, brakes, tire care, and more.
- Pick-up, delivery, and towing available for more complex repairs.
- Expanded service team with more bays and technicians.
- Loaner vehicles available to keep you on the road.

OTIS *Ford*

QUOGUE, NY • EST 1946

For over 75 years, OTIS FORD

has been committed to family-centered service on Long Island. We're excited to continue our legacy of local, trusted care.

32 MONTAUK HWY #1553 • QUOGUE NY 11959
631.653.4000 • OtisFord.com

WHO'S WHO

Evening at Las Vegas and *Crazy Girls*. In 1991, Feeney opened *Viva Las Vegas* at the Sands Hotel & Casino. *Viva Las Vegas*' run of over 18 years makes it the longest-running and most successful afternoon show in Las Vegas history. Since his producing debut, Feeney has gone on to produce numerous other shows worldwide, from Japan to Monte Carlo, including *Viva Las Vegas*, *Showgirls*, *The Great Gleason*, *Bottoms Up*, *Forbidden Vegas*, *Miss Pearl's Cathouse Revival & Dinner Show Spectacular*, *Playboy Girls Hit Parade*, *The World's Greatest Magic Show*, and *The World's Greatest Rock Show*. His television productions include *The Entertainment Page*, *Las Vegas Tonight*, and *Karaoke Crazy*. Feeney's latest shows enjoying huge success running full time in Las Vegas and touring the world are *The Rat Pack is Back* in its twentieth year, *MJ Live*—the #1 Michael Jackson show in the world. An avid traveler himself, Feeney has even taken his productions to the sky, as owner of The Flying Elvi skydiving team. The Flying Elvi, who were first featured in the movie *Honeymoon in Vegas*, consists of ten Elvis Presley-clad jumpers who skydive into events around the world from altitudes of 5,000 – 12,000 feet, free falling at speeds up to 160 miles an hour. In 2008, Feeney was awarded a star on the prestigious "Las Vegas Walk of Stars" for his

outstanding contributions to the Las Vegas community. The star is permanently on display in the sidewalk in front of the Paris Hotel and Casino.



ARTHUR PETRIE (*Executive Producer/TRP Entertainment*) has been in the real estate development and investment business for the past 45 years. He is Chairman of the Board of Petrie Development Corporation, formed in 1976,

and General Manager of Asset Development Services, LLC, a real estate investment company located in Las Vegas, Nevada. Mr. Petrie's experience in commercial real estate includes development for Walmart, Sam's Club, K-mart and other retail users, development of apartment complexes, and redevelopment of a university campus to offices and housing. Petrie Development was the leader in the United States in the development and construction of barrier-free housing for the handicapped, under a HUD housing program. He has been active in the development, ownership and management of Embassy Suites, Hampton Inns, Holiday Inns, Radisson's, and Hyatt Regency Hotels. Current projects include ownership and renovation of the

Federal Reserve Bank building in Minneapolis, Minnesota. He has participated in the acquisition, refinancing and sale of two casino-related properties in Las Vegas, Nevada, and is a founder of Retired.com, Signal Sites, Inc., and Longevity Nutraceutical Labs LLC.

Skilled Nursing & Rehabilitation

WE OFFER PT, OT & SPEECH THERAPIES FOR

- Injuries & Deconditioning
- Neuromuscular Diseases
- Cardiac & Pulmonary
- Joint Replacements
- Stroke Recovery
- Wound Healing
- Outpatient Rehab



OFFERING REAL-TIME AWARD WINNING

Telemetry Monitoring

BROOKHAVEN
HEALTH CARE FACILITY
living legends

AHA CERTIFIED 

631-447-8800
www.LivingLegendsHealth.com





Estate Appraisers Gold Buyers
Fine Jewelry
Collateral Loans
Expert Repair Services

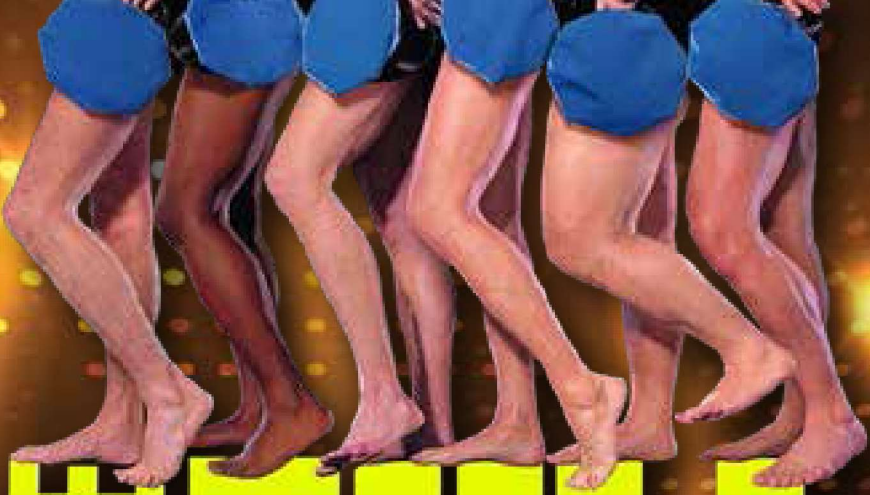
Turn your old unwanted jewelry into cash.



O'NEILL'S
— SALES EXCHANGE —

1 East Main Street, Patchogue, New York 11772

WMJONEILLS.COM



THE FULL MONTY

"It is simply a joy in every way; if you love musicals, you should see it..."

It's a show about what it takes to allow human beings to feel lovable, be loving, and be capable of accepting love."

- Talkin' Broadway



WITH SALLY STRUTHERS

MARCH 13-APRIL 12 2026

Thank you

Because of supporters like you, The Gateway continues to bring Broadway-quality theatre, meaningful education programs, and essential community experiences to our region. As a 501(c)(3) nonprofit organization, we rely on your generosity to sustain and grow this work.

YOUR SUPPORT IN 2025 HAS MADE A REAL IMPACT:

- Welcomed 50,000+ patrons to professional shows, including 42nd Street and Disney's Frozen: The Musical
- Trained and inspired 400+ young performers through the Gateway School for the Performing Arts
- Helped keep the theater accessible through scholarships, discounted tickets, and community performances
- Launched our bathroom, lobby, and seating renovation project

Your gift becomes an investment in what happens on—and around—our stage.

HERE'S HOW YOU CAN MAKE A DIFFERENCE TODAY:

- Donate — every gift over \$100 will be acknowledged in The Gateway's 2026 Playbill
- Support the next generation by donating to the Gateway School for the Performing Arts Scholarship Program
- Leave a lasting legacy with a Shining Wall Plaque (\$1,000) or Theater Seat Plaque (\$500) for yourself or in honor of someone special
- Volunteer your time and talents to help us create outstanding experiences for our guests and community

With your support, we can keep the stage lit for today's audiences and generations to come.

**For more information, please contact
Susan Daconto, Director of Development 631-286-8851**

ADVERTISE IN THE

Gateway PLAYBILL

VISIT WWW.GATEWAYPLAYBILL.COM

RESERVE YOUR AD SPACE TODAY!

OR CALL **631.345.2202**

TO SPEAK WITH A REPRESENTATIVE



THE Gateway

THE GATEWAY'S COMMUNITY COMMITMENT

The Gateway has been a 501(c)(3) nonprofit organization since 2011, dedicated to making live theatre accessible and inclusive for people of all ages and abilities.

COMMUNITY PARTNERSHIPS

We partner with over a dozen nonprofits—including Bellport Boys & Girls Club, East End Disability Associates, CEED, and Dancing Classrooms Long Island—to bring hands-on theatre experiences to youth and families. Programs include a ten-week theatre workshop, free backstage tours, Q&A sessions, and acting workshops. This month, we're collaborating with CEED on a nature-themed arts program for children.

ACCESSIBILITY & INCLUSION

- Library Partnerships: 44 libraries reached- 1,100 half-price tickets in 2024.
- Theatre Development Fund: 2,000 discounted tickets since 2023.
- Group Discounts: 15–25% off for underserved, elderly, and neurodiverse communities.
- Ticket Lotteries: 3,400 affordable tickets.
- Additional Discounts: Veterans, first responders, AARP members, students, and residents.

CHARITABLE SUPPORT

In 2024, we donated 700+ ticket vouchers to local charitable organizations.

Through these efforts, The Gateway ensures theatre is welcoming, enriching, and accessible for all.

AVINO'S



ITALIAN TABLE



NEIGHBORHOOD ITALIAN REDEFINED

PASTA | SEAFOOD | STEAK

OPEN DAILY FOR LUNCH & DINNER
SUNDAY BRUNCH

631-803-6416

108 SOUTH COUNTRY ROAD, BELLPORT VILLAGE

AVINOSITALIANTABLE.COM



LOBSTERFEST, EVERY MONDAY
SERVING BELLPORT SINCE 1985

Miller's Mint

Celebrating 58 Years

— EXPERTISE, PASSION & SELECTION —



A Lifetime of Growth & Service

Miller's Mint, a family-owned business with an International reputation, established in 1967 by Harry & Joan Miller.

We offer a vast selection of coins, stamps, precious metals, and paper money, catering to both seasoned collectors and enthusiastic beginners.

Long Island's
Leading Dealer of:
**GOLD, SILVER
& PLATINUM**

CONTACT US TODAY

800-633-3320

info@millersmint.com

www.millersmint.com

313 E. Main St. Patchogue, NY 11772

A Quarter-Century of Confidence in Every Moment

For 25 years, The Bristal has transformed uncertainty into unwavering assurance, creating sophisticated spaces where care and comfort naturally intertwine.

When Expertise Meets Compassion – Confidence Follows

SAYVILLE
631.563.1160



For a list of all locations in the tri-state area, visit: thebristal.com

The Bristal
ASSISTED LIVING



REESE'S 1900

A TRADITIONAL "OLD STYLE" PUB



~Serving Lunch and Dinner Monday - Saturday~

~Closed Sunday~

70 North Ocean Avenue • Patchogue • 631-289-1900 • www.reeses1900.com



Success Ready

St. Joseph's
University
NEW YORK



Ready. Set. Joe's.

Stellar performances start at St. Joseph's University, New York. Our award-winning educational programs offer a world of opportunities close to home, preparing students to take center stage and be ready for lives of purpose and achievement.



Learn
more at
sjny.edu.

Brooklyn • Long Island • Online

We “Set the Stage” for civilized travel to New England!

• ROOM FOR OVER 90 VEHICLES EACH CROSSING

• ON BOARD FOOD SERVICE & STEAMBOAT LOUNGE

• NUMEROUS CROSSINGS DAILY

• ENCLOSED PASSENGER CABIN

BRIDGEPORT & PORT JEFFERSON FERRY

www.88844ferry.com 1-888-443-3779

THE Gateway

IS ON YOUR FAVORITE SOCIAL MEDIA PLATFORM



@TheGatewayPACSC



@the_gateway



@thegatewayplayhouse



@GatewayShows/videos

<https://thegateway.org/>

Follow us—and while you're here, snap a photo in our lobby or at the outdoor step-and-repeat. Tag us for a chance to win exciting rewards!

AARP[®]
Long Island

**VOLUNTEER
WITH AARP**



We're looking for talented people who want to make a difference in the lives of others, not only people age 50 and older, but all New Yorkers. Strategic thinkers, planners, leaders and doers are all welcome to learn more about AARP's volunteer positions.

And volunteering is known to help you stay healthy, confident and purposeful.



Learn more at

www.aarp.org/VolunteerWithAARPNY

Email us at

AARPNYvolunteer@aarp.org



Let's Make Your
Insurance a Priority!



We provide great rates on personal and business insurance with friendly and personal service.

-Rick Braile



631 758 1550

www.bayharbourinsurance.com

88 WAVERLY AVENUE • PATCHOGUE NY 11772



CHACHAMA
Upscale American Cuisine

Open Monday-Sunday at 4:00 PM

Prix-Fixe served daily | Thursdays Latin Night
\$58.00 ~ 3 courses | \$38.00 ~ 3 courses

**1 FREE drink with dinner
when presenting this coupon**

- Available for on and off premise catering.
- Holiday Parties, Family Gatherings, Special Events.
- We can personalize your event to meet your needs.

655-8 Montauk Hwy. • E. Patchogue, NY
631-758-7640
www.chachamagrill.com

Swezey

FUEL CO., INC. - EST. 1919

**Suffolk's Largest Family
Owned Energy Company**

- Heating & Air Conditioning
- Automatic Oil Delivery Service
- 24-Hour Emergency Service
- Budget Plans that Pay You Interest
- Expert Installations of Boilers, Burners, Hot Water Heaters & Air Conditioning Equipment



475-0270

51 RIDER AVE., PATCHOGUE



Ruland

FUNERAL HOME, Inc.

*Proudly Supporting The Arts
That Enrich Our Lives*

475-0098

500 N. OCEAN AVE, PATCHOGUE NY 11772



631-696-6300

STAGE DOOR
SCHOOL OF DANCE

A Dance Studio for Everyone

Broadway-level training for every age and every ability.
Preschool to adult. Recreational to competitive.

NOW ENROLLING ALL AGES!

Scan to Enroll

STAGE DOOR SCHOOL OF DANCE
127 Sunrise Highway, Patchogue NY
stagedoordancer.com • (631) 654-8858

f i y d

CB

Coldwell Banker American Homes
726 Route 25A
Mount Sinai, NY 11766

AMYBETH HAYES
Real Estate Salesperson
C. 631.384.8678
B. 631.331.9700
amyhayes@cbamhomes.com
amyhayes.cbamhomes.com

Curated Service. Coastal Living. Confident Results.

Real Estate icons

THE *Gateway* SET RENTALS

*More Than
Just Sets!*

Complete sets, props, and costume packages ready to ship.

215 South Country Rd, Bellport, NY 11713
Phone: (631) 286-0555 x7000
Email: rentals@thegateway.org

www.setrentals.com



ADVERTISE IN THE *Gateway* PLAYBILL



VISIT
WWW.GATEWAYPLAYBILL.COM

**RESERVE YOUR
AD SPACE TODAY!**

OR CALL 631.345.2202
TO SPEAK WITH A REPRESENTATIVE

Be on Stage!

THE Gateway
SCHOOL FOR THE

PERFORMING

ARTS

LEARN, LAUGH, SHINE!

FUN CLASSES FOR ALL AGES

- NEW STUDENTS WELCOME • MAKE NEW FRIENDS
- MULTI CLASS DISCOUNTS AND SCHOLARSHIPS AVAILABLE

ACTING • MUSICAL THEATRE • PRODUCTION

Classes Now Enrolling



New students
50% OFF!
*Call to inquire!



**TO LEARN MORE EMAIL: ACTINGSCHOOL@THEGATEWAY.ORG
OR CALL (631) 286-0555, EXT 5000 THEGATEWAY.ORG**

CONTRIBUTE TO THE FUTURE OF THE ARTS

We invite you to lend your support and become a bigger part of our performing arts family.



BOARD MEMBERS

Paul Allan
Gale Edwards
Diane Giattino
Mary Giattino
AJ Lebens

Joseph Minutillo
Ann Nowak
David Ruttura
Ken Searles
Terry Tuthill

★ STAR BILLING \$25,000 +

Anonymous
Ravenel B. Curry
Gale Edwards
Knapp Swezey Foundation

New York State Council on the Arts
Suffolk County Office of Cultural Affairs

★ LEADING PLAYER \$10,000 +

Paul Allan
Phil and Debbie Grucci

Suffolk County Dept. of Economic Development and Planning

★ PRINCIPAL ROLE \$5,000 +

Meri Avino-Italiano
Susan Barlow
Diana and Jim Davies

Donahue Resource Group Inc.
Searles Graphics

★ DIRECTOR'S CIRCLE \$2,500 +

AARP
Brookhaven
Healthcare Facility
Cullen and Danowski, LLP
Dee and David Hensen
Hoffman Grayson Loizides
Vandrei + Vandrei
Architects LLP
Long Island Advance

Maggio Environmental
Karen and Hank Maust
Phyllis Natoli
Isabella Rossellini
Barbara and Eric J. Russo
David Tobachnik and Alice Anne Humphrey
Frank and Marie Trotta
Village Walk of Patchogue

★ FRONT ROW VIP \$1,000 +

Connie and John Albin
Steve, Jackie, and Sam Babyak
Susan Barlow
Paul and Ellen Bonfanti
Mary Jane and Brian Cullen
Ray and Anne Cutter
The Dolber Family Foundation
Fiori Enterprises
Flanzer Construction Inc
Judy Fortuna-Ince and Peter Ince
James and Diane Giattino
Robert and Pamela Goldfarb
Ed Graziano and Doug Carabe
Vincent and Linda Leuzzi

Glenn and Louise Mehrtens
Joan and Harry Miller
Joe Minutillo
Jack Moter and Jane Graham
Michael and Hwasoon Mullaney
Oasis Realty Group -Nick Sekela
Marian and Eva Rokacz
Family Foundation Trust
Fred Rossoff
James Schaefer
Marilyn and Edward Stanions
Swezey Fuel Co., Inc.
George Tvelia
James Wood

★ BACKSTAGE PASS \$500 +

Connie and Kent Adee
Howard Brown
Kathleen Butler
Tom and Sara Jane Corwin
Joe Della Monica
Charles and Linda desJardin
Cheryl A. Felice and Lorraine Kuehn
The Flagg Family
Anna Lou Fletcher
Catherine Gleason
In Memory of Joseph Greve Jr.

Marilyn Hamilton and Joseph LaGennusa
DiGrace Hoiland
Anne Izzillo
Pamela Lerner Home & Design
Ann Marie and Gary Loesch
Dennis and Michelina Maguire
Joe and Tricia Manno
Old Purchase Properties
Mary Procopio
Bill Rignola
Barry Rockwell

Dooner -Rockwell Trust
James and
Anne Marie Rotan
The Schmidt Family
Diane and John Shea Jr.

Don and Libby Steckler
Maureen Veitch
Neil Weingarten
Allen and Angela Welcome
Max Wendel

Richard and
Maryann Hoshino
Carole Kennedy
Nathan King
Janice F. Klein
David and Peggy
Kulakowski
Julie Lachman
Darice Lang
Angela Lehner
Irene and Marty Leonard
Melissa and
Eliot Lieberman
Long Island Jet Ski Rentals
Ted and Lori Lucki
Gail M. Mancuso
Will McDaris and
Jerome Ganz
Maryann McLnerney
Victoria McLaughlin
Elyzabeth Meade
Michael Mehary
Francis and Patricia Miller
Elizabeth Morris
Gary Murphy
Susan Nathanson
Christine Novelli
Kevin and Joy O'Brien
Erin O'Leary
Martin J. Olsen
Mr. and Mrs.
Robert G. O'Neill
Mary Eli Roarke
Joseph and
Debra O'Rourke

Ann and Bill O'Shea
Richard and
Ruth Anne Otterstedt
Patchogue-Medford Library
Lou and Jeanette Paolillo
Herbert and Eleanor Payne
Bill and Patricia Perry
Elizabeth Plisic
Jean Pokorny
Nancy Poulos
Janice L. Raber
Ronald and Maryann Ridolfi
Kathleen Riorda
Mr. and Mrs. Paul Rivera
Ocean Rich Distributors
Fran and David Shandel
Patricia Sikorski
Ruth Simon
Mary Ellen Smith
Robert Smosky
Janine Spencer
Laura Terwilliger
Candace and
Thomas Usztoke
Stephanie and
Rosanne Vertichio
Paula Warmuth
Wendy Way
Natalie Weder
Donald Weimer
Nancy Wibben
Peter E. Williams
Linda and Richie Yakavonis

★ CAST MEMBER \$250 +

Donna Berberich
Pat Broidy
Robert and
Gabrielle Corsetti
Donald and Christine Crispi
Kathy and Tom Cullen
Annette Eaderesto
Donna and Robert Esp
Kathleen and
Michael Ennesser
Candyce Fahner
Jean Fleischer
Kathleen Frigiola
Jack Moter and
Jane Graham
Judith Hope
Barbara Jehle
Susan Kahl and
Jim Vaughan
Susanna Klein
Jane Love
Jeff and
Stephanie Lundwall

Lisa and
George Meyer-Fertal
Mary Beth Minton
Deborah Murphy
Next Gen Advertising
Robert and Kathe Palermo
Marcel Paul
Dr. Mary Koslap-Petraco
Barry Podgorsky and
Gregg Lhotsky
Tonja Pulfer
Sandy Reifel
Alan Robins
Barry Rockwell
Dwight Stecker
Judith Steinberg
Brian G. Urkowitz
Nancy and Roy Vaillancourt
Virginia E. Waterman
Alison and
Rob Wegener, TOLA
Curt and Judy Youngerman

★ STAGE HAND \$100 +

Connie and Kent Adee
Ivone and Joel Albala
In Loving Memory
of Robin J. Allan
Robert and Mary Ambrose
Mary Angelone
Stephanie Bail
Theresa and Ed Baker
Marie Barnouw
Jo Bennett
Susan Berner
Michelle Blair
Arthur Bremer
Kathy Butler
Jaime Canjura
Paul J. Casale
Carol Chester
Janice and Michael Cohen
Coleman Family
Thomas and
Darlene Cummings
The Dankievitch Family
Dennis and
Kathleen Desmond

Gina DeVito
Lexi Diamond and
Jeff Fuisz
Patricia Dima
Nancy Duncan and
Jamie Moog
Bonnie Evans
Courtney Fairchild
The Fawcett Family
Dan Fink
Laurie Fosmire
Fran Derby Floors
The Freedberg Family
Anita and Stewart Gaffan
Michael and
Patricia Garafola
Joseph and
Maryellen Gathard
Dolores Gebhardt
Judith Gorman
Brian Hellmer
Michael Hertz
Ellen Hoffman-Budris and
Maddy Budris

Reflects 2025-2026 Donations



The Performing Arts Center of Suffolk County is a 501(c)3 non-profit organization - all donations are 100% tax-deductible. Thank you for your contribution to the future of the arts!

If you would like to make a donation and have your name added to the list, please contact **Susan Daonto at 631-286-8851 or email susan@thegateway.org**

PERFORMING ARTS CENTER OF SUFFOLK COUNTY

BOARD OF DIRECTORS

Chair Ken Searles
Vice Chairperson, Recording Secretary Terry Tuthill
Corresponding Secretary, Treasurer Gale Edwards
Directors Paul Allan, Diane Giattino, Mary Giattino,
AJ Lebenns, Joseph Minutillo,
Ann Nowak, David Ruttura

ADMINISTRATIVE

Executive Artistic Director Paul Allan
Director of Business Operations Jeff Bellante
Associate Artistic Director Michael Baker
Casting Director Rachel Armitstead
Director of Development Susan Daconto
General Manager Joanne Tambasco
Human Resources Laurie Cole
Company Manager Chris Smith
Casting Assistant Kaitlyn LaGrega
Production Photographer Jeff Bellante
Compliance Officer Annmarie Allan
Bookkeeper & Grants Associate Molly Lambert
Musician Contractor Peter Pece

EDUCATION

Director of Education Michael Baker
Education Manager Rachel Armitstead
Education Administrator Kaitlyn LaGrega
Instructors Meghan Fawcett, Gabrielle Luthy
Joseph Minutillo, Autumnmargaret Walthers,
Amy Woschnik
Accompanists Christy Stark, Hosun Moon, Justin Tesoro

VOLUNTEER USHERS

Cheryl Becker, Violet Bezler, Camille Brideson, Suzette Ciminelli,
Lorie Clifford, Mary Lou Cohalan, Tim Cole, Cornelia D'Aureli,
Janet David, Al Ely, Pat Ely, Jody Evola, Kristina Farmer,
James Ficker, Patti Ficker, Patricia Felice, Theresa Gabriel,
Joyce Gambina, Geri Gerns, Linda Good, Sue Greenleaf,
Nanette Heintz, Janet Kelly, Robert Koenig, Carol Krussman,
Muriel Lanier, Patricia Leask, Marie Lena, Diane Lovizio,
Eileen Maida, Beatrice Marelli, Dawn McKinney, Rita Mendrina,
Connie Merced, Carol Niessing, Linda Okolowich, Judy Onorato,
Celmira Pachon, Kathy Pernice, Peter Pernice, Louise Prinzivalli,
Annette Reeve, Sandy Reifel, Debra Sanda, Harold Schiffman,
Linda Villano, Diane Warren, Joseph Warren, Elizabeth Weeks

PRODUCTION

Director of Production Brian Loesch
Production Stage Manager Izzy Mangiaracina
Technical Director John Sabo
Properties & Paints Supervisor
/Scenic Coordinator Brittany Loesch
Lighting & Electrics Supervisor Riley Noble
Costume Shop Manager Janine Loesch
Audio Engineer Leonardo Mignola
Wigs, Hair, & Makeup Supervisor Dustin Lawson
Rentals Manager
/Associate Production Manager Tony Tambasco
Assistant Technical Director AJ Hansen
Head Carpenter Katie Cully
Wardrobe Supervisor Izzy Mangiaracina
Lead Staff Carpenter Emily Rinfret
Properties & Paints Assistants Rev. Maige Anderson,
Leo Fuller
Staff Electricians Carly Nordaby, Shelby Fairchild
Staff Carpenter Kahlil Collier
Audio Assistant Jake Rizzo
Costumes & Wardrobe Staff Dustin Lawson

BOX OFFICE

Box Office Manager Laurie Cole
House Manager Matthew Kraut, Robbie McGrath
Box Office/Group Sales Abby Beodeker, Janet Caponi,
Katie Ford-Mehrkens, Phyllis Kaye,
Maggie Mehrkens
Front of House Staff Ralph Bianco, Brice Childs,
Donald Childs, Aiden Cullen, Derek Griffin,
Brian Hausle, Joe Kraus, Danny Parr,
Joey Salerno, Breanna Welsh

FACILITIES

Facilities Manager John-Paul Baker
Cleaning Staff Jasper Bailey
Grounds Maintenance HTM Landscaping

GATEWAY PLAYHOUSE
would like to thank our volunteer staff for their
dedication and support. It is much appreciated.

**IF YOU WOULD LIKE TO JOIN
OUR VOLUNTEER STAFF
CALL 631-286-0555**



All we do is all for you.

**We focus entirely on the needs of children,
so Jenna is ready for a lifetime of adventures.**

You can't trade places with your little ones when they're sick,
but you can bring them to experts who understand and care for kids.

As Suffolk County's only children's hospital, we are physicians,
nurses, therapists, educators and researchers with
expertise to match our compassion.



Stony Brook Children's

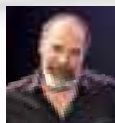
stonybrook.info/kids-health



NEW SEASON

20% OFF

(Excludes Gala)
Use code
GATEWAY



SPRING 2026 AT-A-GLANCE

DRUM TAO | THE BEST

Sat. Jan. 31 @ 7 pm

ITZHAK PERLMAN IN RECITAL

Sat. Feb. 7 @ 8 pm

THE TRAGEDY OF HAMLET

Fri. Feb. 13 @ 8 pm

CRYSTAL CIMAGLIA CELINE DION TRIBUTE

Sat. Feb. 14 @ 8 pm

EMERSON LEGACY CONCERT

Wed. Mar. 4 @ 7 pm

MATTHEW MORRISON RHYTHMS & REVELATIONS

Sat. Mar. 7 @ 8 pm

RHYTHM OF THE DANCE

Sat. Mar. 14 @ 8 pm

JAZZ AT LINCOLN CENTER GREAT AMERICAN CROONERS

Fri. Mar. 20 @ 8 pm

GRAND PISTACHIO LAYER THE WALLS PT. 1

Sun. Mar. 22 @ 4 pm

PARSONS DANCE COMPANY

Sat. Apr. 11 @ 8 pm

STARRY NIGHTS

Thu. Apr. 16 @ 7pm

AN EVENING WITH VIC DIBITETTO

Sat. Apr. 18 @ 8 pm

STONY BROOK OPERA GLUCK'S ORFEO ED EURIDICE

Apr. 25 @ 7:30 pm

& Apr. 26 @ 3 pm

GALA

MANDY PATINKIN | JUKEBOX

Sat. May 2 @ 8 pm

STONY BROOK SYMPHONY ORCHESTRA

Feb. 28 & Mar. 28 @ 7:30 pm

STALLER

CENTER FOR THE ARTS AT STONY BROOK UNIVERSITY

stallercenter.com  @stallercenter (631) 632-ARTS