

**THE** *Gateway*  
PRESENTS

**ain't  
too  
proud**

THE LIFE AND TIMES OF  
**THE TEMPTATIONS**

**JUNE 19 - JULY 19**

# TOP 1%

## in the Nation and THE ONLY ON LONG ISLAND

**Stony Brook Medicine has once again received the highest level of achievement from Healthgrades, as one of America's 50 Best Hospitals® for 2026 — for the fourth consecutive year (2023–2026).**

This achievement places Stony Brook Medicine among the **top 1% nationwide** for overall excellence in care and as the **only health system on Long Island** to be ranked among America's 50 Best.

Stony Brook University Hospital, Stony Brook Southampton Hospital, and Stony Brook Eastern Long Island Hospital are collectively assessed by Healthgrades and share the **America's 50 Best Hospitals Award™**.

It's a reflection of our continued commitment to bringing the best in care to our patients. And it means our patients can feel confident, knowing they're receiving **high quality care year after year**.



Learn more at  
[stonybrook.info/  
top-hospitals](https://stonybrook.info/top-hospitals)



**Stony Brook Medicine**



**PAINTERS'**  
Restaurant

Join us for

**BRUNCH LUNCH DINNER**

.....

Serving Brunch Saturday & Sunday

11am - 3pm

.....

**FOR CATERED EVENTS**

**CALL OUR CATERING DIRECTOR**

**ZACH 631•923•8860**

2 MILES EAST OF GATEWAY PLAYHOUSE

416 SOUTH COUNTRY RD. BROOKHAVEN, NY 11719

631-803-8593

# THE Gateway

For 77 years, The Gateway has been telling stories right here in Bellport. What began as a small summer theatre project stands before you today as a professional, nonprofit regional theatre creating work on a scale that few organizations can match. Each season, incredible artists from across the country come here to live and work alongside dedicated musicians, technicians, and volunteers who believe deeply in the power of what can be created in this special place. Together, they make it possible to produce theatre of an extraordinary caliber right here in our village.

As a nonprofit, our focus is always on putting the integrity of the show and our audience first. We commit to using live musicians, investing in top-tier professional talent, and operating an acting school that helps young students and adults discover confidence and community.

This dedication to excellence is exactly why *Ain't Too Proud* feels so important to share with you. Beyond the legendary music and unforgettable performances, this show tells the deeply human story of young artists navigating ambition, brotherhood, and a rapidly changing world. It is a story about perseverance, sacrifice, and finding harmony despite differences - the exact kind of story theatre is meant to tell.

The truth is, institutions like ours have never been sustained by ticket sales alone. We endure because people choose to invest in the arts, in education, and in spaces where creativity can thrive. Whether you have been joining us for decades or this is your very first visit, thank you for being here tonight and making us a part of your lives.

**So sit back, enjoy the incredible music, and celebrate the enduring legacy of The Temptations.**

Sincerely,

Paul Allan

A handwritten signature in black ink, appearing to read "Paul Allan", with a stylized, cursive script.

Executive Artistic Director  
The Gateway, Performing Arts Center of Suffolk County

# ain't too proud

THE LIFE AND TIMES OF **THE TEMPTATIONS**

Book by  
**DOMINIQUE MORISSEAU**

Based on the book entitled  
*The Temptations* by **OTIS WILLIAMS**  
with **PATRICIA ROMANOWSKI**

Music and Lyrics from  
**THE LEGENDARY MOTOWN CATALOG**

Music by arrangement with  
**SONY MUSIC PUBLISHING**

*Starring*

**JAHMAUL ABIODUN BAKARE**  
**KALONJEE GALLIMORE**

**KOBE BROWN**  
**KEITH JOHNSON**

**JOVAN E'SEAN**  
**MARQUEZ LINDER**

Director of Production  
**BRIAN LOESCH**

General Manager  
**JOANNE TAMBASCO**

Casting  
**HOLLY BUCZEK, CSA – HDB CASTING**

Scenic & Projections Designer  
**BRIAN PACELLI**

Sound Design  
**LEONARDO MIGNOLA**

Associate Director  
**ELIZABETH ADDISON**

Executive Artistic Director  
**PAUL ALLAN**

Associate Artistic Director  
**MICHAEL BAKER**

Company Manager  
**CHRIS SMITH**

Production Stage Manager  
**SHAWNA VORAGEN**

Music Director  
**JACINTH GREYWOODE**

Choreographer  
**IAN COULTER-BUFORD**

Director of Business Operations  
**JEFF BELLANTE**

Director of Development  
**SUSAN DACONTO**

Lighting Design  
**KIM HANSON**

Costume Design  
**JANINE LOESCH**

Wig & Makeup Design  
**DUSTIN LAWSON**

Associate Music Director  
**JAKE TURSKI**

Director  
**DEMONE SERAPHIN**

Original Broadway Production Produced by Ira Pittelman & Tom Hulce, Berkeley Repertory Theatre, Sony/ATV Music Publishing, EMI Entertainment World, Inc., Josh Berger, Ken Schur, Ron Simons, Stephen Byrd, Alia Jones, Ruth & Steve Hendel, Cheryl Wiesenfeld, Harriet Newman Leve, Jeffrey Finn, Stephen & Nancy Gabriel, Darren Bagert, David Binder, Wendy Federman, Susan Quint Gallin, Mickey Liddell, Robert Ahrens, Christopher Maring, David Mirvish, Stacy Jacobs, Marianne Mills, Loraine Alterman Boyle, deRoy-Winkler, Karmazin-McCabe, Koenigsberg-Krauss, Zell Kierstead, Deborah Barrera, Robyn & Larry Gottesdiener, The Araca Group, Rashad V. Chambers, Mike Evans, Hani Farsi, John Gore Organization, Mike Karns, Willette & Manny Klausner, Gabrielle Palitz, No Guarantees, Sheldon Stone, Stuart Weitzman and Universal Music Theatrical

World Premiere Produced in September 2017 by Berkeley Repertory Theatre  
Tony Taccone, Artistic Director Susan Medak, Managing Director

"Ain't Too Proud" is presented through special arrangement with Music Theatre International (MTI).  
All authorized performance materials are also supplied by MTI, 421 West 54th Street, New York, NY 10019.  
Tel.: (212) 541-4684 Fax: (212) 397-4684 www.MTIShows.com

# Now there are 4 ways to "Listen to Lawrence" Davidow explain Elder Law, Special Needs and Estate Planning.

1



**WATCH** the  
*Listen to Lawrence*  
seminar in its entirety  
on our website.

2



**LISTEN** to the *Listen to Lawrence* Podcast series, to find out the answers to commonly asked questions. Find it on our website or wherever you get your podcasts.

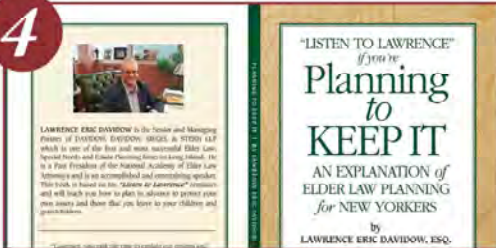
3



**LEARN** from the *Listen to Lawrence* Letters that are released twice a week – sign up at [info@davidowlaw.com](mailto:info@davidowlaw.com) to receive them in your inbox.

The Listen to Lawrence Letter

4



**READ**  
the *Listen to Lawrence*  
Book: *Planning to Keep It*  
now available  
on Amazon.



**DAVIDOW, DAVIDOW, SIEGEL & STERN, LLP**  
*Long Island's Elder Law, Special Needs and Estate Planning Firm*

1455 Veterans Highway - Suite 203, Islandia, New York 11749 | Tel. (631)234-3030

[www.davidowlaw.com](http://www.davidowlaw.com) Additional office located in Mattituck

# CAST OF CHARACTERS

Otis Williams.....	JAHMAUL ABIODUN BAKARE*
Young Otis Williams, Lamont, Others .....	KOBE BROWN
David Ruffin .....	KALONJEE GALLIMORE*
Melvin Franklin.....	KEITH JOHNSON
Eddie Kendricks.....	JOVAN E'SEAN*
Paul Williams .....	MARQUEZ LINDER*
Berry Gordy.....	GREG WATKINS*
Dennis Edwards .....	BRYANT
Elbridge "Al" Bryant .....	JAMAUR HOUSTON
Smokey Robinson, Richard Street.....	CEDRIC JAMAAL GREENE
Shelly Berger .....	DERIC GOCHENAUER
Josephine .....	GABRIELLE BECKFORD*
Diana Ross.....	ALANNA LOVELY*
Mary Wilson.....	RENEE MARIE TITUS*
Tammi Terrell.....	MONTRIA WALKER*
Onstage Swing .....	JAMESON CLANTON
Onstage Swing .....	MAYA IMANI*
Ensemble .....	DAVID LAFLER, ALBERT JACK PETERSON, ADRIAN PHILLIPS, SIENNA REEFER, DAVID TOBACHNIK, DARIAN ARCHIE TROY

## UNDERSTUDIES

Otis Williams.....	GREG WATKINS*
David Ruffin .....	BRYANT
Melvin Franklin, Young Otis, Lamont.....	JAMESON CLANTON
Eddie Kendricks.....	DARIAN ARCHIE TROY
Paul Williams .....	JAMAUR HOUSTON
Berry Gordy.....	ADRIAN PHILLIPS

Dance Captain .....	MAYA IMANI*
Production Stage Manager.....	SHAWNA VORAGEN*
Assistant Stage Managers .....	LEXIE SECRIST*, REBECCA KLEEMAN

## ORCHESTRA

Music Director, Keys 1 .....	JACINTH GREYWOODE
Associate Music Director, Keys 2 .....	JAKE TURSKI
Saxophone, Flute .....	JOSEPH ST JULES
Trombone.....	JEROME SMITH
Electric Guitar .....	RAYMOND SABATELLO
Electric Bass .....	ALEJANDRO ESTRELLA
Drums .....	AUGUSTO OROPEZA



\*Actors employed in this production are members of Actors' Equity Association, the union of Professional Actors and Stage Managers in the United States.



The Director/Choreographer is a member of the Society of Stage Directors and Choreographers, Inc., an independent national labor union.



The Musicians employed in this production are members of the American Federation of Musicians.

# MUSICAL NUMBERS

## **AIN'T TOO PROUD TO BEG**

by Edward Holland Jr. and Norman Whitfield. Stone Agate Music.

## **BABY LOVE**

by Brian Holland, Edward Holland Jr., and Lamont Dozier.  
Stone Agate Music.

## **BALL OF CONFUSION**

by Barrett Strong and Norman Whitfield. Stone Agate Music.

## **CLOUD NINE**

by Barrett Strong and Norman Whitfield. Stone Agate Music.

## **COME SEE ABOUT ME**

by Brian Holland, Edward Holland Jr., and Lamont Dozier.  
Stone Agate Music.

## **DON'T LOOK BACK**

by Ronald White and William Robinson Jr. Sony Music Publishing  
(US) LLC and Jobete Music Co. Inc.

## **FOR ONCE IN MY LIFE**

by Orlando Murden and Ronald N. Miller. Jobete Music Co. Inc.  
and Stone Diamond Music Corp.

## **GET READY**

by William Robinson Jr. Sony Music Publishing (US) LLC.

## **GLORIA**

by Leon Rene. Shapiro, Bernstein & Co., Inc.

## **I CAN'T GET NEXT TO YOU**

by Barrett Strong and Norman Whitfield. Stone Agate Music.

## **I COULD NEVER LOVE ANOTHER (AFTER LOVING YOU)**

by Barrett Strong, Norman Whitfield, and Rodger Penzabene Sr.  
Stone Agate Music.

## **(I KNOW) I'M LOSING YOU**

by Cornelius Grant, Edward Holland Jr., and Norman Whitfield.  
Stone Agate Music.

## **I WANT A LOVE I CAN SEE**

by William Robinson Jr. Sony Music Publishing (US) LLC.

## **I WISH IT WOULD RAIN**

by Barrett Strong, Norman Whitfield, and Rodger Penzabene Sr.  
Stone Agate Music.

## **IF I COULD BUILD MY WHOLE WORLD AROUND YOU**

by Harvey Fuqua, Johnny William Bristol, and Vernon Bullock.  
Jobete Music Co. Inc. and Stone Agate Music.

## **IF YOU DON'T KNOW ME BY NOW**

by Kenneth Gamble and Leon Huff. Mijac Music and Warner-  
Tamerlane Publishing Corp.

## **I'M GONNA MAKE YOU LOVE ME**

by Gregg Crockett, Skip Batey, and Gregg Peacock-America.  
Jobete Music Co. Inc.

## **IN THE STILL OF THE NIGHT**

by Fred Parris. LLEE Corp.

## **JUST MY IMAGINATION (RUNNING AWAY WITH ME)**

by Barrett Strong and Norman Whitfield. Stone Agate Music.

## **MY GIRL**

by Ronald White and William Robinson Jr. Sony Music Publishing  
(US) LLC and Jobete Music Co. Inc.

## **PAPA WAS A ROLLIN' STONE**

by Barrett Strong and Norman Whitfield.  
Stone Diamond Music Corp.

## **RUNAWAY CHILD, RUNNING WILD**

by Barrett Strong and Norman Whitfield. Stone Agate Music.

## **SHOUT**

by O'Kelly Isley, Ronald Isley, and Rudolph Isley.  
EMI Longitude Music.

## **SINCE I LOST MY BABY**

by Warren Moore and William Robinson Jr. Sony Music Publishing  
(US) LLC and Jobete Music Co. Inc.

## **SPEEDO**

by Esther Navarro. EMI Longitude Music.

## **SUPERSTAR (REMEMBER HOW YOU GOT WHERE YOU ARE)**

by Barrett Strong and Norman Whitfield. Stone Agate Music.

## **THE WAY YOU DO THE THINGS YOU DO**

by Robert Rogers and Williams Robinson Jr. Sony Music  
Publishing (US) LLC and Jobete Music Co. Inc.

## **WAR**

by Barrett Strong and Norman Whitfield. Stone Agate Music.

## **WHAT BECOMES OF THE BROKENHEARTED**

by James Dean, Paul Riser, and William Weatherspoon.  
Stone Agate Music and LaTrace Publishing LLC.

## **YOU CAN'T HURRY LOVE**

by Brian Holland, Edward Holland Jr., and Lamont Dozier.  
Stone Agate Music.

## **YOU'RE MY EVERYTHING**

by Cornelius Grant, Norman Whitfield, and Rodger Penzabene Sr.  
Stone Agate Music.

---

## **ANY VIDEO AND/OR AUDIO RECORDING OF THIS PRODUCTION IS STRICTLY PROHIBITED.**

**FIRE NOTICE:** The exit indicated by a red light and sign nearest to the seat you occupy, is the shortest route to the outside. In the event of fire or other emergency, please do NOT run. WALK to that Exit. However, under normal circumstances, when leaving the Theatre, use the center rear exits. **SMOKING** is prohibited in the BUILDING, as required by the Suffolk County NO SMOKING Ordinance. Smoking in any area designated "No Smoking" renders the offenders subject to a fine, or imprisonment, or both.

# PORTERS

*on the lane*

COCKTAILS  RESTAURANT  CATERING



FOR RESERVATIONS *or* MORE INFO CONTACT US

phone ✦ 631 — 803 — 6067

email ⚓ [portersbellport@aol.com](mailto:portersbellport@aol.com)

NEW MENUS - SPECIALS - MUSIC - UPCOMING EVENTS

HOURS *AND* MORE VISIT ...

website ⚙ [www.portersonthelane.com](http://www.portersonthelane.com)

Address - 19 Bellport Lane Bellport Village NY 11713

**SOMETHING SWEET FROM ACROSS THE STREET**

*Carla Marla's*

ICE CREAM PARLOR & CANDY SHOP



one free topping w/ this coupon

CALL: 631-803-6630

email: [carlamarlas@hotmail.com](mailto:carlamarlas@hotmail.com)

8 BELLPORT LANE, BELLPORT VILLAGE, NY 11713

# AVINO'S



## ITALIAN TABLE



NEIGHBORHOOD ITALIAN REDEFINED

PASTA | SEAFOOD | STEAK

OPEN DAILY FOR LUNCH & DINNER  
SUNDAY BRUNCH

631-803-6416

108 SOUTH COUNTRY ROAD, BELLPORT VILLAGE

AVINOSITALIANTABLE.COM



LOBSTERFEST, EVERY MONDAY  
SERVING BELLPORT SINCE 1985

# JDN | Wealth Management

Accredited Investment Fiduciary (AIF®)  
Chartered Retirement Plan Specialist (CRPS®)  
Certified Financial Planner (CFP®)

## Where do you want to go?

We'll get there together.

*Building tailored investment strategies for over 14 years  
using stocks, municipal bonds, annuities, and more.*



**Jeff Nagel**  
AIF®, CFP®, CRPS®  
Owner/Financial Advisor

### OUR FOCUS:

- Protecting what you've built
- Turning savings into reliable income
- Keeping more of what you earn through tax-smart investing
- Managing and balancing risk over time

**Trusted guidance.**  
**Clear planning.**  
**Fiduciary advice.**

*Call us today to  
schedule a complimentary  
review meeting!*

*Visit our website for  
more information.*



Located in **BELLPORT**

16 Station Road, Suite 11 | Bellport, NY 11713  
Tel: 631.434.5561 | [jnagel@jdnwealthmanagement.com](mailto:jnagel@jdnwealthmanagement.com)  
[www.jdnwealthmanagement.com](http://www.jdnwealthmanagement.com)

*Securities offered through Cetera Wealth Services LLC, member FINRA/SIPC.  
Advisory services offered through Cetera Investment Advisers LLC, a registered  
investment adviser. Cetera is under separate ownership from any other named entity.*

# WHO'S WHO



**JAHMAUL ABIODUN BAKARE\*** (*Otis Williams*) is excited to be performing at The Gateway. Bakare began training at Morehouse College and finished his graduate studies at the University of Nevada in Las Vegas. Bakare has won prestigious awards

for his interpretations of both operatic and musical theater repertoire. Some roles performed include: Agwe (first national Broadway tour of *Once on this Island*), Pinkerton (*Madama Butterfly*), Mister (*The Color Purple*), Apollo (*Rocky*), Flick (*Violet*), Enjolras (*Les Misérables*), Wolf/Prince Charming (*Into the Woods*). @jahmaulb - instagram



**GABRIELLE BECKFORD\*** (*Josephine*) is excited to be making her Gateway debut! Featured credits include Rapunzel in the Original Broadway Company of *Once Upon A One More Time*. The Writer in the Off-Broadway Premiere of *Chasing Grace*. Tour: *The Prom* (First Nat'l). Regional: *Dreamgirls*, *The Wiz*, *CROWNS*, *GLORIA: A Life*, *Nina Simone: Four Women*, and *AIDA*.



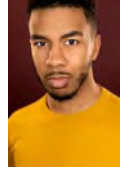
**KOBE BROWN** (*Young Otis, Lamont*) is an actor and singer hailing from Michigan and is so excited to tell this iconic story from his home state. National Tours: *Superfreak: The Rick James Story*, *Hairspray*, and Dr. Seuss' *How The Grinch Stole*

*Christmas!* International: *Hairspray* (Australia), *Cruel Intentions* (Australia), *RENT* (Sydney Opera House). Film/TV: *Rustin* (Netflix) and *SNL* (50th Anniversary Premiere). Special thanks to my family, friends and team at Stewart Talent! Insta: @KobeBobe



**BRYANT** (*Dennis Edwards, u/s David*) is a singer, actor, and entertainer based between New York City and Philadelphia. Credits include *Stuntboy*, *In the Meantime*, *Dear Evan Hansen*, *RENT*, *The Chequerboard Watch*, and *Kinky*

*Boots*. Additional performances include 54 Below, Chelsea Table + Stage, The Green Room 42, and featured appearances throughout the Northeast. Bryant is honored to join the company of *Ain't Too Proud* and first gives thanks to God, to mom & dad, family, friends, and everyone who continues to believe in his dreams. IG: @theeerealbryant



**JAMESON CLANTON** (*Onstage Swing, u/s Melvin*) is thrilled to be making his Gateway debut! TGBTG! National Tour: *Ain't Too Proud*. Regional: *Come From Away* (Theatre Raleigh), *Beautiful: The Carole King Musical* (The Fireside Theatre), *The Color*

*Purple* (North Carolina Theatre), *JESUS* and *Miracle of Christmas* (Sight & Sound Theatres). Thanks to Dad, Jamesha, and Patrick for their unending love and support. IG: @jamesonclanton. For Mama.



**JOVAN E'SEAN** (*Eddie Kendricks*) Gateway debut! Jovan E'Sean was seen last year performing at the first-ever all-black male choir "Silk & Sonic" red carpet performance at The Met Gala. Off-Broadway credits include *CATS: The Jellie Ball* (PAC

NYC), Maury Yeston's *Anything Can Happen in the Theater* & *Platinum Dreams* (The York Theatre), *The Secret Life of Bees* (Atlantic Theater Company). Regional credits include *Dreamgirls* (North Carolina Theatre) & *Hairspray* (Laguna Playhouse). Film: Universal Pictures' *BROS*. Pace University BFA Musical Theater. For James Silver, Quinton Rudolph Watlington, and Sean Watlington—the bloodline I walk in, the strength I stand on, and the legacy I carry into every room. To God be the glory.

@jovaneasean



**KALONJEE M GALLIMORE\*** (*David Ruffin*) is honored to celebrate these titans of black history. He thanks DeMone, Ian, and Jacinth for their trust and collaboration; Holly for championing him; and Brett, Judy, and his reps at BWA. Broadway: *A*

*Beautiful Noise* (OBC); Off-Broadway: *Bowl EP* (Vineyard Theatre) Film: "Girls Getaway Gone Wrong 2;" Regional: Alliance Theatre, Argyle Theatre, Theatre Aspen, SurfFlight Theatre BFA: NYU @Kalon.jee- For Nimene and Minnie xoxo. GLORY TO GOD!



**DERIC GOCHENAUER** (*Shelly Berger*) began his career at Sight & Sound Theatres in *NOAH: The Musical*. He moved to Chicago to study comedy and improv, then spent seven years as the Equity Wing Chair of the

Continued on page 14



**20% off**  
season shows  
using code GATEWAY  
at checkout\*  
\*Excludes Gala.



**DAVID FOSTER & KATHARINE MCPHEE**

Sat. Sep. 26 @ 8pm

**DAVID SEDARIS**

Sun. Oct. 4 @ 7pm

**THE HOT SARDINES**

Sat. Oct. 10 @ 8pm

**EMERSON LEGACY CONCERT**

Sun. Oct. 11 @ 5pm

**GRAVITY & OTHER MYTHS**

Sun. Oct. 18 @ 7pm

**PAUL REISER**

Sat. Oct. 24 @ 8pm

**JENNIFER FRAUTSCHI & CHRISTINA DAHL**

Wed. Oct. 28 @ 7pm

**DISNEY PIXAR'S COCO**

Fri. Oct. 30 @ 6:30pm

**ONE VISION OF QUEEN**

Sun. Nov. 8 @ 7pm

**STARRY NIGHTS**

**COLIN CARR & ARNAUD SUSSMANN**

Wed. Nov. 11 @ 7pm

**BALLETS JAZZ MONTRÉAL**

Sat. Nov. 21 @ 8pm

**HOLIDAY POPS**

Sun. Dec. 6 @ 4pm

**JESSICA VOSK: SLEIGH**

Fri. Dec. 11 @ 8pm

**STONY BROOK SYMPHONY ORCHESTRA**

Oct. 3, Nov. 7, Dec. 5,  
Feb. 20, Apr. 3 @ 7:30 pm



**STONY BROOK  
FILM FESTIVAL**  
stonybrookfilmfestival.com

*On Sale now.  
See it this July!*

**20% off**  
your flex pass  
using code GATEWAY  
at checkout\*

stallercenter.com (631) 632-ARTS [2787] [follow](#) @stallercenter

STALLER CENTER FOR THE ARTS AT STONY BROOK UNIVERSITY

**STALLER**



# WHO'S WHO

Joseph Jefferson Awards. Deric currently owns and operates the Actors Equity Building cafe in Times Square. Tours: *Tony 'N' Tina's Wedding*. Theater: *Avenue Q*, *A Chorus Line*, *Batboy: The Musical*, *Urinetown*. Deric is blessed to be at The Gateway with you today. You are loved. IG: @dericcoconut



**CEDRIC JAMAAL GREENE** (*Smokey Robinson*, *Richard Street*) A Blessed and Highly Favored Native of Boston, Mass. Cedric has performed internationally. Tours: *Ain't Too Proud* 2nd National, *Swing!*, *Hooray for Hollywood*, *Dancing Queen*, *Man in the Mirror*, *Dreamgirls*. Theater: *Dreamgirls*, *Scottsboro Boys*, *Memphis*, *Cabaret*, *A Chorus Line*. TV: Macy's Thanksgiving Day Parade (Disney). Excited to return to The Gateway. Special Thanks to Dottridge Talent Agency and HDB Casting. IG: @cedric.g



**JAMAUR HOUSTON** (*Elbridge 'Al' Bryant*, *u/s Paul*) is a sophomore at the University of Michigan, pursuing his BFA in Musical Theatre. His recent educational credits include *Marian*, *The Musical* (New Works Festival), and Bob Fosse's *Sing, Sing, Sing*. Regionally, he has performed in *RENT* as Angel Dumott Schunard. Special thanks to the Zuri Agency. IG: @jamaurhouston.



**MAYA IMANI\*** (*Onstage Swing*, *Dance Captain*) (she/her) is thrilled to join this company in honoring the legacy of The Temptations! Previous credits: *The Wiz* 50th Anniversary Tour (Swing/Ensemble/Addaperle u/s), *Mean Girls* 1st Nat'l Tour (Ensemble/Janis u/s), *Anastasia* (Bucks County Playhouse), *42nd Street* (Maltz Jupiter; Anytime Annie). Much gratitude to Ian, TPG, and Michigan MT. @\_maya\_imani\_ www.maya-imani.com



**KEITH JOHNSON** (*Melvin Franklin*) is excited for his Gateway Playhouse debut! Credits: *Watch Me Walk* (Off-Broadway); *Austen's Pride* (Pre-Broadway Tour & Stages St. Louis); *Lippa's Wild Party* (Lyric Theatre), *Aida* (Stages St. Louis), *In The Heights* (Mill Mountain), *Ragtime* (MTW & Stages St.

Louis), *Dreamgirls* (Arrow Rock), *Bring It On* (HSVPA), *Cats* (San Diego Music Theatre), *A Chorus Line* (Rocky Mountain Rep). 3 Keys: Holy Spirit's guidance; God's provision; unshakeable support from family & Ms. McGraw! BBDD Phil 4:8. @k.john3454



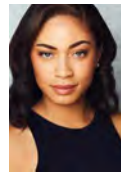
**DAVID LAFLE** (*Ensemble*) is thrilled to return to The Gateway stage after completing his freshman year at Slippery Rock University, where he is pursuing a BFA in Musical Theatre. Some of his favorite Gateway roles include Les in *Newsies*, Mufasa/

Simba in *The Lion King Jr.*, Prince Eric in *The Little Mermaid Jr.*, and Cogsworth in *Beauty and the Beast Jr.* This spring, David had the incredible opportunity to portray Harry, the lead role in *The Singer of Shanghai*, at SRU and the Maltz Museum. He would like to thank his SRU professors for fostering his growth, his family for their endless love and support, his Stage Door family for always having his back, and Michael Baker for this wonderful opportunity to return to The Gateway as an Acting School alum.



**MARQUEZ LINDER\*** (*Paul Williams*) couldn't be more ecstatic to be returning to The Gateway, three years later. Previous credits include 1st national tour of *Mrs. Doubtfire: The Musical* (Andre), 1st national tour of *Tootsie: The Musical* (Max/Jeff cover),

*Brigadoon* at Village Theatre, *Beautiful: The Carole King Musical*, and *The Bodyguard* at Theater by the Sea, and *Evita* here at the the Gateway. He is an avid crochet artist, gaymer, and Beyoncé fan. Life is too hard, why not have fun along the way! IG: @marquezjinder #resist



**ALANNA LOVELY\*** (*Diana Ross*) is thrilled to be making her Gateway debut! Regional: Court Theatre: *Big White Fog* (Juanita); Drury Lane Theatre: *Beautiful: The Carole King Musical*, *Ain't Misbehavin'*, *Guys and Dolls* (Miss Adelaide), *Cinderella*

(Charlotte); *Shrek* (Dragon); The Studebaker Theatre: *Personality*; The Marriott Theatre: *The World Goes Round*; Lookingglass Theatre: *The Steadfast Tin Soldier*; Merrimack Rep: *Nina Simone: Four Women*;

Continued on page 16

# THE BELLPORT

*Steps Away from the Gateway Playhouse*



*~ New York Times Review*

631.286.7550 | [www.thebellportrestaurant.com](http://www.thebellportrestaurant.com)

159 SOUTH COUNTRY ROAD | BELLPORT NY 11713

# WHO'S WHO

Paramount Theatre: *A Christmas Story*. Forward Theatre: *The Wanderers*. Television: *Power Book IV: Force* (STARZ); *Chicago Fire* (NBC); *Empire* (FOX). @lannalynette



**ALBERT JACK PETERSON** (*Ensemble*) is ecstatic to be back at the Gateway! Regional credits include: *The Sound of Music* (Friedrich), *A Christmas Story the Musical* (Flick u/s performed), and *Beauty and the Beast* (Ensemble). Other roles

include: *A Chorus Line* (Don), *Beauty and the Beast* (Gaston), *Finding Nemo the Musical* (Marlin), *The Wizard of Oz* (The Cowardly Lion). Albert has been at the Gateway for over a decade and is now pursuing a career in Directing at PACE University. Albert would like to thank his Mom, Madilyn, Lukas, Chachi, and Michael for all of their support!



**ADRIAN PHILLIPS** (*Ensemble, u/s Berry*), native of Louisiana, former North Carolina resident. Graduate of New York Film Academy. Big show features include *Fences*, *Dreamgirls*, *The Addams Family*, and *Shenandoah* on regional theater stages. Current

Black Spectrum Theater Company Cast.



**SIENNA REEFER** (*Ensemble*) is thrilled and honored to be a part of this beautiful cast! Favorite theatre credits include Regina George in *Mean Girls*, Annie Golden in *Leader of the Pack*, Dorothy in *The Wizard of Oz*, and Ursula in *The Little Mermaid*.

She also appeared in Gateway's *In the Heights* and in numerous Gateway Conservatory Productions. Short film credit includes Sophia in *Can't You See I'm Trying*. She dances on a competitive dance team at Stage Door School Of Dance and is a student at The Gateway School of the Performing Arts here at The Gateway Playhouse. She hopes to pursue a career in musical theatre and thanks her friends and family for their support!



**RENEE MARIE TITUS\*** (*Johnnie Mae, Mary Wilson*) is excited and honored to be back at The Gateway! You might have seen her as Diva Donna in The Gateway's production of *Summer: The Donna Summer Musical*. National tours: *Moulin Rouge! The Musical* (La

Chocolat), *The Color Purple* (Swing/ Celie U/S). Thanks to the ATP creative team and casting for this opportunity. Thanks to my family for their continued support. Love to my Maxi! All glory to God.



**DAVID TOBACHNIK** (*Ensemble*) is thrilled to be returning to the main stage at The Gateway. He is a veteran of more than a decade at The Gateway School for the Performing Arts. David was recently seen as the Rabbi in *Fiddler on the Roof* at The

Gateway. He has also acted in Gateway's Haunted Playhouse every year since its inception. He would like to thank Michael Baker, teacher, friend and mentor, for his unwavering support.



**DARIAN ARCHIE TROY** (*Ensemble, u/s Eddie*) is stoked to return to The Gateway! Recently seen performing Mayor/Ja' Kieth at Suncoast Broadway. Regional credits include: Barry Belson in *Jersey Boys*, U/S Pabbie in Disney's *Frozen*, Ensemble

in *Anastasia* at Tuacahn Amp, Paul in *Kiss Me, Kate* at Virginia Beach MT, Judah in *Joseph...*, and TJ in *Sister Act* at Sierra Rep MT. Much love to ICB and Jake T. @dariantroyarchie



**MONTRIA WALKER\*** (*Tammi Terrell*) is excited to be making her Gateway debut! Off-Broadway: *The Cotillion* (Singer), *Sistas: The Musical* (Tamika). Regional: Olney Theatre Center: *Little Miss Perfect* (U/S Perf. Howard Admissions Counselor &

Ensemble), Goodspeed: *All Shook Up* (U/S Perf. Sylvia & Ensemble), McCarter Theatre & Goodspeed: *Dreamgirls* (Effie Alt.), Weinberg Center for The Arts: *Pippin* (Leading Player), Cain Park: *Memphis* (Ensemble). Education: BFA with a Concentration in Musical Theatre from Kent State University. Montria would love to thank her loved ones for their continuous love and support! Instagram: @MontriaWalker Isaiah 40:31



**GREG WATKINS\*** (*Berry Gordy, u/s Otis*) Regional: Signature Theater: *Play On*; Arena Stage/Alabama Shakespeare Festival/Seattle Opera: *Jubilee*; Keegan Theatre: *Legally Blonde* (Helen Hayes Award for Best

Continued on page 18



**STAGE DOOR**  
SCHOOL OF DANCE

# SUMMER 2026 DANCE

Classes for Every Age & Stage  
Preschool • Youth • Teens • Adults  
*+ Inclusive weDance Program*

**July 6 – August 6, 2026**

**Train. Perform. Grow.**

**Join Long Island's Premier Dance Studio**

*Ballet • Tap • Jazz • Hip Hop • Acro • Contemporary •  
Musical Theatre & More!*

**Scan to View  
Schedule &  
Register**



**Now Enrolling**  
*Limited Availability*

**ENROLL  
TODAY**



stagedoordancer.com • Patchogue, NY • (631) 654 - 8858

# WHO'S WHO

Supporting Actor); Constellation Theatre: *Aida*, *Desperate Measures*; Workhouse Arts Center: *Rock of Ages*; Arts Centric: *Sister Act*; Avant Bard: *The Gospel at Colonus*, *King Lear*; Toby's Dinner Theater: *Dreamgirls*; Creative Cauldron: *Thunder Knocking On the Door*; Olney Theatre: *Finian's Rainbow*. Education: Duke Ellington School of the Arts, Howard University, American University.  
IG: @gregwatkinsmusic

**DEMONE SERAPHIN** (*Director*) is an award-winning director and theatrical visionary whose work fuses immersive design, music-driven storytelling, and a rigorous commitment to Black cultural expression. Known for crafting experiences that are as intellectually provocative as they are emotionally and spiritually charged, Seraphin is emerging as a singular voice in the future of American theatre. He most recently directed the highly acclaimed world premiere of *Brassroots District LA '74*, an immersive funk musical hailed by the Los Angeles Times as "the finest of immersive theatre in LA." His recent New York credits include *Reparations* and *Don't Touch T(he)art* at the New York Theatre Festival, while *Exquisite Poison* was presented at Los Angeles' Open Fist Theatre. He is excited to return to The Gateway to direct the regional premiere of *Ain't Too Proud*. Seraphin is also the creator and director of the world premieres *The Church of Andre: An Immersive Cocktail Party in Three Movements* and

*The Siskel & Ebert Project*, two ambitious works that push the boundaries of form, audience engagement, and theatrical storytelling. His additional directing credits include the regional premiere of *Chicken & Biscuits* and *Gospel Nativity* (which he also wrote and directed) at Virginia Rep. At Avant Bard Theatre, his work includes *Topdog/Underdog* (Helen Hayes Award nomination for Outstanding Direction of a Play), *How I Learned What I Learned*, *The Gospel at Colonus*, and *Billy and George*, a Pulitzer-recognized work. Rooted in a tradition that honors both the sacred and the radical, Seraphin's work bridges classical text, contemporary performance, and immersive environments—centering story, community, and transformation with a cinematic and deeply human touch. For more information, visit [www.demonenseraphin.com](http://www.demonenseraphin.com)

**IAN COULTER-BUFORD** (*Choreographer*) is a St. Louis born, NYC based actor-choreographer, creative producer, and educator. He is the 2025 BroadwayWorld Off-Broadway Award winner for Best Original Choreography for *Golem Owned a Tropical Smoothie* and a Carbonell Award nominee for Outstanding Achievement of an Artistic Specialty. London: *The Rose Room*. Off-Broadway/NYC: Original *Camp Morning Wood* at Playwrights Horizons and *Golem Owned a Tropical Smoothie* at The Tank. Regional: acclaimed choreography for *Escape to Margaritaville* at Theatre SilCo, and Assistant

Director/Choreographer for *Into the Woods* with Broadway's Matthew Steffens (Virginia Theatre Festival). His television and screen work includes: *The Late Late Show with James Corden* and *Vice Live!*, with commercial credits including The Walt Disney Company, Norwegian Cruise Line, and Six Flags Theme Parks. Ian currently serves as an adjunct professor in the CAP21/Molloy University program in NYC. Thanks to God, DeMone, and Team ICB Creative. Illinois Wesleyan alum. Let's connect! @iancoulturbuford



**Skilled Nursing & Rehabilitation**

WE OFFER PT, OT & SPEECH THERAPIES FOR

- Injuries & Deconditioning
- Neuromuscular Diseases
- Cardiac & Pulmonary
- Joint Replacements
- Stroke Recovery
- Wound Healing
- Outpatient Rehab

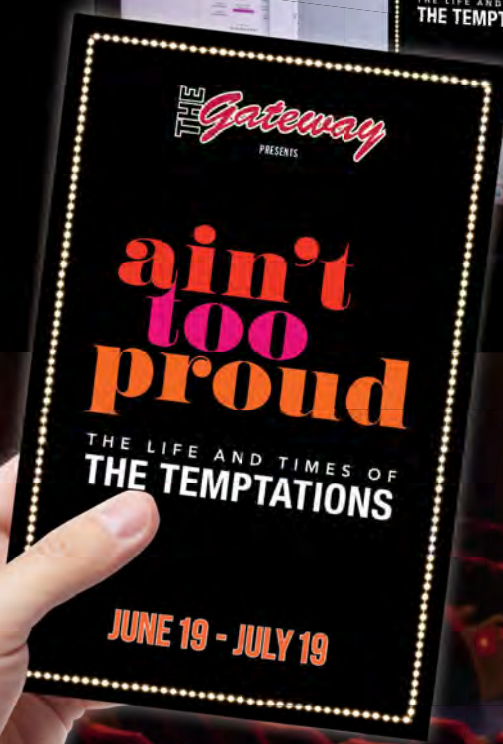
OFFERING REAL-TIME AWARD WINNING **Telemetry Monitoring**

AHA CERTIFIED

**BROOKHAVEN**  
HEALTH CARE FACILITY  
living legends

631-447-8800  
[www.LivingLegendsHealthn.com](http://www.LivingLegendsHealthn.com)

# PERFORMANCE MEETS PRODUCTION



**YOU'RE ENJOYING THE SHOW. YOU'RE HOLDING OUR WORK.**

We believe the best way to demonstrate our capabilities is to put them right in your hands. Searles Graphics is proud to handle design and printing for The Gateway. When you're ready for a marketing partner who can handle the big picture and the fine details, look no further.

## Experience the Quality



[www.searlesgraphics.com](http://www.searlesgraphics.com)

56 Old Dock Road, Yaphank, New York 11980 • 631-345-2202

# WHO'S WHO

**JACINTH GREYWOODE** (*Music Director/Conductor*) is a Brooklyn-based composer, orchestrator, and music director. Broadway: *Cult of Love* (Music Supervisor), *Soldier's Play* (Music Consultant/Arranger), *Rose Tattoo* (AMD). Off-Broadway: ... *Wholesale* (CSC; MD/Orchestrator); *Chasing Grace* (SheNYC; MD/Orchestrator). NY: *Jelly's Last Jam* and *Wonderful Town* (Encores!; AMD). Regional: *How to Break* (Village Theater; MD/Composer). As composer: *Blended Harmony* (Theater Mu). *Black Girl in Paris* (Richard Rodgers Winner); *Iron John* (NAMT Winner, Richard Rodgers Finalist), *White Raven*, *Black Dove* (White Snake Projects) [www.jacinthgreywoode.com](http://www.jacinthgreywoode.com)

**SHAWNA VORAGEN\*** (*Production Stage Manager*) is a Los Angeles-based Stage Manager, and excited to make her Gateway debut with this incredible show. Select stage management credits include: *Citizen: An American Lyric*, *Twilight: Los Angeles, 1992* (Center Theatre Group); *Witness Uganda*, *UNMASKED: A Theatrical Celebration of Black Women's Liberation* (The Wallis); *Paradise Blue* (Geffen Playhouse); *Pippin* (North Coast Rep); *If I Forget*, *Citizen: An American Lyric*, *In The Red And Brown Water*, *The Brothers Size*, *The Ballad of Emmett Till* (Fountain Theatre); *Next to Normal* (Triage Productions). Thank you for supporting live theatre!

**ELIZABETH ADDISON** (*Associate Director*) is an award-winning multi-hyphenate artist focused on recovery and the performing arts. She has written three musicals, including *Chasing Grace*, which had a successful off-Broadway run this past March, and won awards for Best Musical and Best Direction at the 2023 SheNYC festival, and was semi-finalist for the prestigious O'Neil's New Musical Theater Festival. Elizabeth also scripted two shows at the 92Y and recently received The Boston Foundation's LAB grant for her new show, *1:58, An Act of Becoming*, set to debut in June 2026. Additionally, she has been commissioned to write a play for The Oklahoma Shakespearean Festival. Elizabeth shares her insights on creativity in recovery globally and serves as a story coach and transformational speaker. [Elizabethspeaks.com](http://Elizabethspeaks.com)

**JAKE TURSKI** (*Associate Music Director*) is thrilled to be returning to The Gateway for his seventh show! NYC pianist/music director. Has been faculty/staff at Molloy College/CAP21 Conservatory, AMDA NYC,

LaGuardia High School, and others. Former keyboard sub for the Radio City Christmas Spectacular and cruising with Norwegian and Royal Caribbean. Special thanks to his mom and Paul for keeping him in the loop. Enjoy the show!

**LEXIE SECRIST\*** (*Assistant Stage Manager*) (she/her) is a LA-based stage manager and she is so happy to be working her first show at The Gateway. Some of her recent credits include *Love's Labour Lost/Dr. Faustus* (Independent Shakespeare Company), *Pump Up the Volume* (The Hudson Theatre), *Brushstroke* (The Odyssey Theatre), *The Jewish Dog* (The Wallis), *Twilight, Los Angeles: 1998* (The Mark Taper).

**REBECCA KLEEMAN** (*Assistant Stage Manager*) is excited to return to The Gateway for *Ain't Too Proud!* Her most recent stage management credits include: *West Side Story* (ASM, The Gateway), *The Full Monty* (ASM, The Gateway), *The Wizard of Oz: Youth Edition* (SM, Greater Boston Stage Company), *The Musical Adventures of Flat Stanley* (SM, Totem Pole Playhouse), *The 39 Steps* (ASM, Totem Pole Playhouse), *9 to 5* (ASM, Totem Pole Playhouse). She proudly graduated with a B.F.A. in Stage Management from Boston University and would like to thank her parents and cat, Frankie Daisy Diva, for their endless support.

**BRIAN PACELLI** (*Scenic & Projections Designer*) is a New York City-based projections and scenic designer. His work focuses on bridging the gap between digital and physical worlds, making stories more relevant to our modern life. Selected Off-Broadway: *RENT*, *Gene & Gilda*, *Welcome to the Big Dipper*, *Scarlett Dreams* (Lortel Award Nomination). Regional: *ASCEND* (Pittsburgh Playhouse) *The Bridges of Madison County* (Timber Lake Playhouse), *Son of Zeus* (Penguin Rep), *A Strange Loop* (Circle Theatre), *Dreamgirls* (White Plains PAC), and *Tommy and Me* (Bucks County Playhouse)."

**KIM HANSON** (*Lighting Design*) has done lots of lighting for lots of tours, national and international. He is based in CT. and considers himself partially retired (don't tell my wife) where he designs two ballets a year for her ballet studio. He is the resident designer for The Waterfront Playhouse in Key West, and designs lighting as often as possible for Ballet Santa Barbara. For the last 15 years he

Continued on page 24

# JC's Restaurant



## BRUNCH • DINNER • TO-GO CATERING PACKAGES PRIVATE PARTIES

Rehearsal Dinners, Corporate Parties, Birthday Parties,  
Christmas Parties, Bridal Showers

**Two convenient locations just minutes  
from The Gateway. Come enjoy dinner before  
or after the show.**

2 Country Club Drive  
Manorville, NY 11949

**(631) 909-3525**

[jcsrestaurant1@gmail.com](mailto:jcsrestaurant1@gmail.com)

[www.jcsmanorville.com](http://www.jcsmanorville.com)

 [@jcsmanorville](https://www.instagram.com/jcsmanorville)

1086 Mastic Road  
Mastic, NY 11950

**(631) 772-4680**

[jcsrestaurant1@gmail.com](mailto:jcsrestaurant1@gmail.com)

[www.jcsmastic.com](http://www.jcsmastic.com)

 [@jcsmastic](https://www.instagram.com/jcsmastic)

# Take the **SHOW** on the **ROAD**

Your **SOURCE** for **FORD** Sales & Service



## Enjoy our expanded **MOBILE SERVICE PROGRAM:**

- Routine maintenance right at your door – oil changes, brakes, tire care, and more.
- Pick-up, delivery, and towing available for more complex repairs.
- Expanded service team with more bays and technicians.
- Loaner vehicles available to keep you on the road.

# OTIS *Ford*

QUOGUE, NY • EST 1946

**For over 75 years, OTIS FORD**

*has been committed to family-centered service  
on Long Island. We're excited to continue our  
legacy of local, trusted care.*

32 MONTAUK HWY #1553 • QUOGUE NY 11959  
**631.653.4000 • [OtisFord.com](http://OtisFord.com)**

# WHO'S WHO

has been a Production Manager for the Stephen Siller Foundation—producers of the annual Tunnel to Towers race where he managed the equipment and personnel for the Brooklyn side of the race. He recently retired from local politics after chairing the Board of Education for 10 years and then as a Selectman for 8 years. He is one of two 3-peat winners of the annual Gateway 4th of July pool tournament. The first show he designed for here was *Baby* in 1985, this marks his 42nd year here at Gateway. The list of dear life-long friends he has had the luck to meet and work with here is long indeed; a big thanks and love to every one of you and to the audiences who make this all possible!

**LEONARDO MIGNOLA** (*Sound Design*) hails from Brooklyn, NY, and has been at The Gateway Playhouse for four years. As Gateway's resident sound designer, their credits include various productions such as The Gateway's *Holiday Spectacular on Ice* starring Nancy Kerrigan and, most recently, *West Side Story*. In addition to sound design, and often contributing to other backstage crews, Leo is the lead automation technician for Gateway's Haunted Playhouse. Leo thanks the crew for their support, and is proud to contribute to this musical theater community.

**DUSTIN LAWSON** (*Wig & Makeup Design*) is a Tennessee native and is thrilled to be designing another show here at the Gateway! Regional: *Pretty Woman* (Regional Premiere), *West Side Story*, *The Full Monty*, *42nd Street*, Irving Berlin's *White Christmas*, *Rock of Ages*, and others all at the Gateway. During the fall he serves as the Creature and Makeup Designer for Gateway's Haunted Playhouse. Other notable credits include his work on the workshops of *Evil Dead: The Musical* (High School Edition) and *Mean Girls* (High School Edition) at Stagedoor Manor Performing Arts Training Center in Loch Sheldrake, NY. He's thrilled to continue contributing his craft to the magic of live theatre, and to work alongside such talented collaborators. Instagram: @double.take.sfx

**JANINE LOESCH** (*Costume Design*) is a New York based Costume Designer. Other costume designs include: *Welcome to the Big Dipper* (The York, Off-Broadway World Premiere), *Evita\**, *Jersey Boys\**, *Rock of Ages\**, Jimmy Buffet's *Escape to Margaritaville\**, *Beautiful: The Carole King Musical\**, *Holiday*

*Spectacular on Ice* with Nancy Kerrigan, *The Addams Family*, *Fiddler on the Roof*, *The Full Monty*, *West Side Story* (The Gateway), *Romeo and Juliet*, *Bloody, Bloody Andrew Jackson*, *King Lear\**, *And Then There Were None\** (South Shore Experience), *A View from the Bridge\**, *The Revolutionist* (Modern Classics Theatre @BACCA), *The Mikado* (New York Tour), Junior Versions of: *Spongebob The Musical*, Disney's *The Lion King*, Disney's *Finding Nemo*, *Matilda*, Disney's *The Little Mermaid*, and *Legally Blonde*, *Teen Edition* (The Gateway Conservatory). Janine was the Wardrobe Supervisor on the World Premiere Off-Broadway Production of *The Last Supper: Musical*, the Original Off-Broadway Premiere of *¡Americano!*, and the Off-Broadway Production of *Fiddler on the Roof: In Yiddish with English Supertitles*, Directed By Joel Grey. She also Costume-Coordinated The First National Tour of *The Cher Show: A Broadway Musical*, and the National Tour of *Little Women; The Broadway Musical*. \*Indicates BroadwayWorld Best Costume Design Nominee. Visit for more: <https://janineoeschtbb.wixsite.com/janine-loesch-cd>

**MUSIC THEATRE INTERNATIONAL (MTI)** is one of the world's leading theatrical licensing agencies, granting theatres from around the world the rights to perform the greatest selection of musicals from Broadway and beyond. Founded in 1952 by composer Frank Loesser and orchestrator Don Walker, MTI is a driving force in advancing musical theatre as a vibrant and engaging art form. MTI works directly with the composers, lyricists and book writers of these musicals to provide official scripts, musical materials and dynamic theatrical resources to over 100,000 professional, community and school theatres in the US and in over 150 countries worldwide. MTI is particularly dedicated to educational theatre, and has created special collections to meet the needs of various types of performers and audiences. MTI's Broadway Junior® shows are 30- and 60-minute musicals for performance by elementary and middle school-aged performers, while MTI's School Editions are musicals annotated for performance by high school students. Launched in May 2025, MTI's Broadway Senior™ musicals are geared and adapted for adult performers 55 and over. MTI maintains its global headquarters in New York City with additional offices in London (MTI Europe) and Melbourne (MTI Australasia)

Continued on page 32



## SUPPORT THE GATEWAY PLAYHOUSE

*Thank you. Because of supporters like you, The Gateway Playhouse continues to bring Broadway-quality theatre, meaningful education programs, and essential community experiences to our region. As a 501(c)(3) nonprofit organization, we rely on your generosity to sustain and grow this work.*

### YOUR SUPPORT IN 2025 MADE AN IMPACT

- Welcomed 50,000+ patrons to professional productions, including *42nd Street* and *Disney's Frozen: The Musical*
- Trained and inspired 400+ students through the Gateway School for the Performing Arts
- Expanded access through scholarships, discounted tickets, and community programs
- Began bathroom, lobby, and seating renovations to enhance the theatre experience
- Donated 700+ ticket vouchers to local charitable organizations

### COMMUNITY & ACCESSIBILITY

The Gateway Playhouse partners with organizations such as the Bellport Boys & Girls Club, East End Disability Associates, CEED, and Dancing Classrooms Long Island to bring theatre workshops, backstage tours, and educational programs to youth and families.

Through 44 library partnerships, 3400 ticket lotteries, and community discounts, over 1000 affordable tickets are distributed each year to students, seniors, veterans, and underserved communities.

### HOW YOU CAN SUPPORT

- Donate — Gifts of \$100+ are recognized in our 2026 Playbill
- Support Scholarships for the Gateway School for the Performing Arts
- Leave a Legacy with a Theatre Seat Plaque (\$500) or Shining Wall Plaque (\$1,000)
- Volunteer and help us create memorable experiences for our community

***Your generosity helps keep the stage lit for today's audiences and future generations.***

**For more information:  
Susan Daconto, Director of Development • 631-286-8851**

# THE *Gateway*

**2026-2027 SEASON**

***BIG Stories!***  
***BIG Music!***  
***BIG Heart!***

*A New Season of Music, Legends,  
And Lives Changed In The Spotlight!*

**7000 STRANDED PASSENGERS. ONE SMALL TOWN.  
A REMARKABLE TRUE STORY.**

**COME  
FROM  
AWAY**

**AUG. 7 - SEPT. 6**

FOUR LEGENDS IN ONE STUDIO FOR A HOLIDAY YOU'LL NEVER FORGET

ELVIS PRESLEY | JERRY LEE LEWIS | CARL PERKINS | JOHNNY CASH

# MILLION DOLLAR QUARTET

CHRISTMAS



NOV. 27<sup>2026</sup> - JAN. 3<sup>2027</sup>

# FUNNY GIRL

THE MUSICAL

SHE'S NOT LIKE OTHER GIRLS. THAT'S HER SECRET WEAPON!

JAN. 22 - FEB. 21<sup>2027</sup>



EXPERIENCE THE MUSIC. DISCOVER THE MAN. WITNESS THE LOVE STORY BEHIND THE SONGS.

## HARRY CHAPIN

I WANNA LEARN A LOVE SONG  
A NEW MUSICAL



MARCH 12 - APRIL 4<sup>2027</sup>

SEE FOUR OR MORE SHOWS & SAVE 35%

Plan Your Season at [Thegateway.org](http://Thegateway.org) or Call 631-286-1133

ALL TICKETS ON SALE NOW

# Be on Stage!

**THE** Gateway  
SCHOOL FOR THE

**PERFORMING**

**ARTS**

**LEARN, LAUGH, SHINE!**

## FUN CLASSES FOR ALL AGES

- NEW STUDENTS WELCOME • MAKE NEW FRIENDS
- MULTI CLASS DISCOUNTS AND SCHOLARSHIPS AVAILABLE

**ACTING • MUSICAL THEATRE • PRODUCTION**

## Classes Now Enrolling

New students  
**50% OFF!**  
\*Call to inquire!



**TO LEARN MORE EMAIL: [ACTINGSCHOOL@THEGATEWAY.ORG](mailto:ACTINGSCHOOL@THEGATEWAY.ORG)  
OR CALL (631) 286-0555, EXT 5000 [THEGATEWAY.ORG](http://THEGATEWAY.ORG)**

# Children's Theater

Fun for the whole family,  
tickets start at \$20!

GROUP RATES AVAILABLE!  
Perfect for Parties,  
Camps and More!

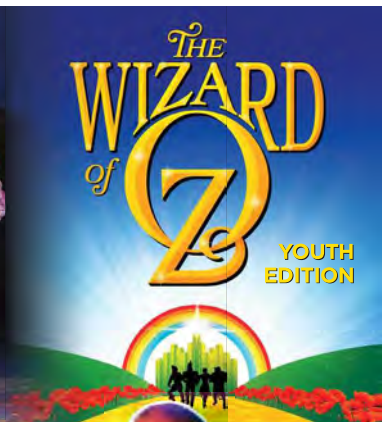


**JULY 3**   **JULY 5**   **JULY 10**

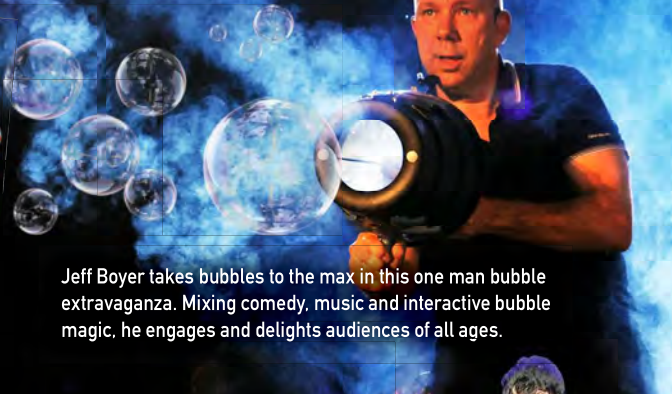
2PM   10AM   11AM

**JULY 11**   **JULY 17**   **JULY 18**

11AM   11AM   11AM



THE  
WIZARD  
of  
**Z**  
YOUTH  
EDITION



**AUG 15**   **AUG 16**  
11AM   10AM

Jeff Boyer takes bubbles to the max in this one man bubble extravaganza. Mixing comedy, music and interactive bubble magic, he engages and delights audiences of all ages.

Rogers & Hammerstein's

# Cinderella

YOUTH  
EDITION



**AUG 21**   **AUG 22**   **AUG 23**   **AUG 28**   **AUG 29**   **AUG 30**  
2PM   11AM   10AM   11AM   11AM   10AM

# ADVERTISE IN THE

# Gateway PLAYBILL



VISIT

[WWW.GATEWAYPLAYBILL.COM](http://WWW.GATEWAYPLAYBILL.COM)

**RESERVE YOUR  
AD SPACE TODAY!**

**OR CALL 631.345.2202**  
TO SPEAK WITH A REPRESENTATIVE

## THE *Gateway* SET RENTALS

*More Than  
Just Sets!*

**Complete sets, props, and costume  
packages ready to ship.**

215 South Country Rd, Bellport, NY 11713

Phone: (631) 286-0555 x7000

Email: [rentals@thegateway.org](mailto:rentals@thegateway.org)

[www.setrentals.com](http://www.setrentals.com)



THE GATEWAY'S ANNUAL FUNDRAISER

# Party ON THE Point

## *Honoring Sandy Chapin*

Wife of legendary singer-songwriter, philanthropist,  
and hunger activist Harry Chapin

**FRIDAY, JULY 31 @ 6:30 PM**

An Exclusive Evening at a Beautiful Bellport Waterfront Home  
Featured in the FX/Hulu Series *Love Story*

- FIREWORKS BY GRUCCI
- EXCEPTIONAL CUISINE
- GUEST PERFORMANCES • DJ
- DANCING • RAFFLES

**TICKETS IN ADVANCE \$225 • DAY OF EVENT \$250**

**Please RSVP by July 24th**



The Gateway is proud to support Long Island Cares at this event and invite you to help us give back to our community. Please consider joining our virtual food drive or bringing a non-perishable food donation the night of the event. Every donation helps provide meals to Long Islanders in need.



## THE Gateway

Purchase Tickets, Sponsorships & Make a Donation

**TheGateway.org/Support | 631-286-1133**

# WHO'S WHO

**HOLLY BUCZEK, CSA** (*Casting*), owner/casting director of HDB Casting, has cast Broadway, Off-Broadway, regional theatre, and national/international tours. Recent projects include Stages St. Louis 2026 Season, *Miracle on 34th Street* National Tour, *The Phil Collins Story*, *Label-Less* Off-Broadway, *Falling Out – A New Musical* and various shows for J2 Spotlight and the Broadway Bound Theatre Festival. More info: [Hdbcasting.com](http://Hdbcasting.com)

**DOMINIQUE MORRISSEAU** (*Book*) is the author of *The Detroit Project* (A 3-Play Cycle): *Skeleton Crew* (Atlantic Theater Company/Broadway), *Paradise Blue* (Signature Theatre), and *Detroit '67* (Public Theater, Classical Theatre of Harlem and NBT). Additional plays include: *Confederates* (Signature Theatre), *Pipeline* (Lincoln Center Theatre), *Sunset Baby* (LAByrinth Theatre/Signature Theater), *Blood at the Root* (National Black Theatre), and *Follow Me To Nellie's* (Premiere Stages). Her Broadway production of *Skeleton Crew* (Manhattan Theatre Club) is Tony-nominated for Best Play and she is also the Tony-nominated book writer on the Broadway musical *Ain't Too Proud – The Life and Times of the Temptations* (Imperial Theatre). TV/Film projects: She has served as Co-Producer on the Showtime series "Shameless." She has developed television projects with FX, A24, Netflix, and Maceo-Lyn (Kamilah Forbes, Ta-Nehisi Coates), and wrote the film adaptation of the documentary "STEP" for Fox Searchlight. Additionally, she has done rewrites for the films "Terms of Endearment" (Lee Daniels / Paramount), "What's Goin' On" (Mad Chance / Warner Bros), and is currently consulting on the Netflix animated feature, "Tunga". Awards include: Spirit of Detroit Award, PoNY Fellowship, Sky-Cooper Prize, TEER Trailblazer Award, Steinberg Playwright Award, Audelco Awards, NBFT August Wilson Playwriting Award, Edward M. Kennedy Prize for Drama, OBIE Award (2), and the Ford Foundation Art of Change Fellowship, named one of Variety's Women of Impact for 2017-18 and a recipient of the 2018 MacArthur Genius Grant. In 2022 Dominique was awarded the key to the city by the mayor of Detroit.

**OTIS WILLIAMS** (*based on the book by*) is a five-time Grammy Award-winning singer, and a songwriter, author, producer and executive producer, born in Texarkana, Texas and raised in Detroit. Recognized as the founding and sole surviving original member of The Temptations, one of the most prolific musical institutions of all time. Williams, a Rock and Roll Hall of Famer, rose to superstardom after the group released the Grammy Hall of Fame mega-hit "My Girl" in the '60s. Today, The Temptations are one of the greatest brands worldwide and their presence across multi-media platforms has never been more vivid. Williams' life story was originally chronicled in his critically acclaimed autobiography, *Temptations*, and then sourced for the Emmy Award-winning television "The Temptations," which he co-produced and is still on air or streaming every day somewhere in the world. Now, Williams' personal story is the source for the Broadway theatrical release, *Ain't Too Proud* and he serves as an executive producer. Named the #1 R&B Artists of All Time (Billboard), The Temptations throughout their evolution, has released countless chart hits, many American masterpieces.

**SONY MUSIC PUBLISHING** (*music by arrangement with*), established in 1995 as a joint venture between Sony and Michael Jackson, is the world's leading music publisher. Sony owns or administers more than two million copyrights, including those from such iconic music catalogs as EMI Music Publishing, Leiber & Stoller, Mijac Music, Motown and Famous Music. Sony controls many of the best-known songs ever written, including "New York, New York," "All You Need Is Love," "You've Got a Friend," "Ain't No Mountain High Enough," "Over the Rainbow" and "Stand By Me." In addition, Sony represents the copyrights of such legendary artists as The Beatles, Leonard Cohen, Neil Diamond, Bob Dylan, Michael Jackson, Carole King, Joni Mitchell, Queen, The Rolling Stones, Sting, The Supremes, Hank Williams and Stevie Wonder, among others. Its ever-growing list of chart-topping artists and songwriters includes Alicia Keys, Lady Gaga, P!nk, Shakira, and Taylor Swift.

# Miller's Mint

Celebrating 58 Years

— EXPERTISE, PASSION & SELECTION —



## A Lifetime of Growth & Service

Miller's Mint, a family-owned business with an International reputation, established in 1967 by Harry & Joan Miller.

*We offer a vast selection of coins, stamps, precious metals, and paper money, catering to both seasoned collectors and enthusiastic beginners.*

Long Island's  
Leading Dealer of:  
**GOLD, SILVER  
& PLATINUM**

## CONTACT US TODAY

800-633-3320

[info@millersmint.com](mailto:info@millersmint.com)

[www.millersmint.com](http://www.millersmint.com)

313 E. Main St. Patchogue, NY 11772

# STEIGER

C R A F T

Over 50 Years of Building Premier Sport Fishing Boats

99 Bellport Avenue, Bellport NY | 631-286-2136

## OUR BOARD OF DIRECTORS

SCAN TO READ  
FULL BIOS



**KEN SEARLES**  
Chairperson



**TERRY TUTHILL**  
Vice-Chairperson



**GALE EDWARDS**  
Secretary



**PAUL ALLAN**  
Director



**DIANE GIATTINO**  
Director



**MARY GIATTINO**  
Director



**ANDREW "A.J." LEBENNS**  
Director



**JOSEPH MINUTILLO**  
Director



**ANN L. NOWAK**  
Director



**DAVID RUTTURA**  
Director



*Summer  
Garden Party*



**LOAN - BUY - SELL - REPAIR**  
One East Main Street Patchogue, NY 11772 • 631 289 9899 • [WWW.JONEILLS.COM](http://WWW.JONEILLS.COM)



**ECC Eatery**  
Patchogue, NY  
Estd. 2021

ITALY  
MON. - SUN. (11-AM - 10-PM)  
WED. - FRI. (11-AM - 10-PM)  
SAB. (11-AM - 10-PM)

*Where Great Food Lives. Every. Single. Day.*

Artisanal & meal prep

Scratch-Baked Sourdough & Focaccia

In-House Desserts

**Exquisite**  
HEALTHY EATS



ECC Eatery

**Exquisite Catering Cuisine**

Full-Service Catering. Simple BBQ to Elegant Weddings.  
Private Chef Experiences by Chef Charles J. Drayton.

Eatery: (631) 730-3585 | Catering: (631) 721-6097 | 140 River Ave, Patchogue

*Suffolk County's Finest: Patchogue, Blue Point, Bayport.*

**We "Set the Stage" for civilized travel to New England!**

**ROOM FOR OVER 90 VEHICLES EACH CROSSING**

**ON BOARD FOOD SERVICE & STEAMBOAT LOUNGE**

**NUMEROUS CROSSINGS DAILY**

**ENCLOSED PASSENGER CABIN**

**BRIDGEPORT & PORT JEFFERSON FERRY**

**www.88844ferry.com 1-888-443-3779**

# REESE'S 1900

A TRADITIONAL "OLD STYLE" PUB



~Serving Lunch and Dinner Monday - Saturday~

~Closed Sunday~

70 North Ocean Avenue • Patchogue • 631-289-1900 • [www.reeses1900.com](http://www.reeses1900.com)



Success  
Ready

St. Joseph's  
University  
NEW YORK



**Ready. Set. Joe's.**

Stellar performances start at St. Joseph's University, New York. Our award-winning educational programs offer a world of opportunities close to home, preparing students to take center stage and be ready for lives of purpose and achievement.



Learn  
more at  
[sjny.edu](http://sjny.edu).

Brooklyn • Long Island • Online



Celebrating 26 Years in Bellport

# Bellport JEWELERS & RARITIES

*Historic Bellport Village*

**Your old Gold & Stones Repurposed or Turned into Cash**

**We Buy-Appraise-Consult on  
All Jewelry, Coins, Stamps,  
Diamonds, Currency &  
Memorabilia**

**CUSTOM DESIGNS BY  
MASTER JEWELER & DESIGNER**

*Peter J. Romano*

*One of a kind One at a time*

*Diamonds for all - from the earth or from the lab, Gemstones, Personalized Jewelry,  
Hand-crafted Jewelry, Sports-Music-Movie Memorabilia, Unique Oddities*

148 South Country Road  
Call OR Text - 631.286.7700  
[www.bellportjewelers.com](http://www.bellportjewelers.com)

**MENTION THIS AD AND GET 1 FREE  
VERBAL APPRAISAL ON ANY ITEM**

**PALERMO  
PAVING INC.**  
Bellport, New York

## OUR SERVICES INCLUDE

- ASPHALT PAVING | DRAINAGE INSTALLATION
- MASONRY | POURED CONCRETE
- SEALCOATING | OIL & STONE SURFACES
- BRICK PATIOS, WALKWAYS | POOL SURROUNDS

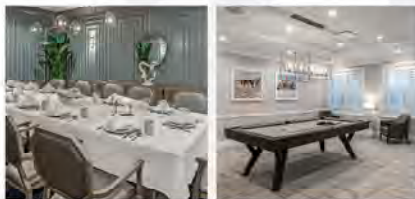


**PALERMO PAVING | Bellport NY**  
**631.286.8739 | [info@palmopaving.com](mailto:info@palmopaving.com) | [palmopaving.com](http://palmopaving.com)**

# The Confidence of Choosing Right, The Art of Living Well

*The*  
**Bristol**<sup>®</sup>  
ASSISTED LIVING

For over 25 years, we've transformed uncertainty into unwavering assurance, creating sophisticated spaces where care and comfort naturally intertwine.



**The Bristol at Sayville**  
631.563.1160

For a list of all locations in the tri-state area, visit: [thebristol.com](http://thebristol.com)



**CHACHAMA**  
Upscale American Cuisine

Open Tuesday-Sunday at 4:00 PM

Prix-Fixe served daily | Thursdays Latin Night  
\$58.00 ~ 3 courses | \$38.00 ~ 3 courses

Lober Bake Wednesdays Starting  
Wednesdays June 3, 2026

**1 FREE drink with dinner  
when presenting this coupon**

- Available for on and off premise catering.
- Holiday Parties, Family Gatherings, Special Events.
- We can personalize your event to meet your needs.

655-8 Montauk Hwy. • E. Patchogue, NY  
631-758-7640  
[www.chachamagrill.com](http://www.chachamagrill.com)



Let's Make Your  
**Insurance a Priority!**



*We provide great rates  
on personal and business  
insurance with friendly  
and personal service.*

-Rick Braile



**631 758 1550**

[www.bayharbourinsurance.com](http://www.bayharbourinsurance.com)

88 WAVERLY AVENUE • PATCHOGUE NY 11772



**631-696-6300**

# Swezey

FUEL CO., INC. - EST. 1919

## Suffolk's Largest Family Owned Energy Company

- Heating & Air Conditioning
- Automatic Oil Delivery Service
- 24-Hour Emergency Service
- Budget Plans that Pay You Interest
- Expert Installations of Boilers, Burners, Hot Water Heaters & Air Conditioning Equipment



**475-0270**

**51 RIDER AVE., PATCHOGUE**

# AARP®

Long Island

## VOLUNTEER WITH AARP



We're looking for talented people who want to make a difference in the lives of others, not only people age 50 and older, but all New Yorkers. Strategic thinkers, planners, leaders and doers are all welcome to learn more about AARP's volunteer positions.

And volunteering is known to help you stay healthy, confident and purposeful.



Learn more at

[www.aarp.org/VolunteerWithAARPNY](http://www.aarp.org/VolunteerWithAARPNY)

Email us at

[AARPNYvolunteer@aarp.org](mailto:AARPNYvolunteer@aarp.org)



# Ruland

FUNERAL HOME, Inc.

*Proudly Supporting The Arts  
That Enrich Our Lives*

**475-0098**

500 N. OCEAN AVE, PATCHOGUE NY 11772

# CONTRIBUTE TO THE FUTURE OF THE ARTS

We invite you to lend your support and become a bigger part of our performing arts family.



## BOARD MEMBERS

Paul Allan  
Gale Edwards  
Diane Giattino  
Mary Giattino  
AJ Lebens

Joseph Minutillo  
Ann Nowak  
David Ruttura  
Ken Searles  
Terry Tuthill

Barbara and Eric J. Russo  
Brett and Erica Smith  
David Tobachnik and Alice

Anne Humphrey  
Frank and Marie Trotta

## ★ STAR BILLING \$25,000 +

Anonymous  
Paul Allan  
Ravenel B. Curry  
Gale Edwards  
Phil and Debbie Grucci  
Knapp Swezey Foundation

New York State  
Council on the Arts  
Suffolk County Office  
of Cultural Affairs  
Suffolk County Dept. of  
Economic Development  
and Planning

## ★ FRONT ROW VIP \$1,000 +

Connie and John Albin  
Steve, Jackie, and Sam Babyak  
The Bellport Restaurant  
Paul and Ellen Bonfanti  
Mary Jane and Brian Cullen  
Ray and Anne Cutter  
The Dolber Family Foundation  
Fiori Enterprises, Teresa Fiori  
Flanzer Construction Inc  
Judy Fortuna-Ince  
and Peter Ince  
James and Diane Giattino  
Bryan and Gilly Doherty  
Robert and Pamela Goldfarb  
Ed Graziano and Doug Carabe  
Vincent and Linda Leuzzi  
Melissa and Eliot Lieberman  
Chris and Michael McDermott  
Glenn and Louise Mehrrens

Joe and Luci Minutillo  
Jack Moter and Jane Graham  
Michael and Hwasoon  
Mullaney  
Oasis Realty Group  
-Nick Sekela  
Mary Procopio  
Bill and Sandra Rignola  
Marian and Eva Rokacz  
Family Foundation Trust  
Fred Rossoff  
James Schaefer  
William Schmidt  
Marilyn and Edward Stanions  
Swezey Fuel Co., Inc.  
George Tvelia  
Antonio Vargas  
Varneys Restaurant  
James Wood

## ★ PRINCIPAL ROLE \$5,000 +

Meri Avino-Italiano  
Susan Barlow  
Diana and Jim Davies  
Donahue Resource Group Inc.

Miller's Mint  
Outback Cesspool and  
Portable Toilets  
Searles Graphics  
Steiger Craft

## ★ BACKSTAGE PASS \$500 +

## ★ DIRECTOR'S CIRCLE \$2,500 +

AARP  
Avino's Italian Table  
Atria Senior Living  
Brookhaven Healthcare  
Facility  
Cullen and Danowski, LLP  
Dee and David Hensen  
Hoffman Grayson Loizides  
Vandrei & Vandrei  
Architects LLP

AJ Lebens, Existence Media  
Long Island Advance  
Maggio Environmental  
Karen and Hank Maust  
Dave and Debbie Morrissey  
Phylis Natoli  
Painters Restaurant  
Porters on the Lane  
Isabella Rossellini

Connie and Kent Adee  
Howard Brown  
Kathleen Butler  
Tom and Sara Jane Corwin  
In Memory of  
Peggy Ann Davis  
Joe Della Monica  
Charles and Linda desJardin  
Candyce Fahner  
Cheryl A. Felice  
and Lorraine Kuehn

The Flagg Family  
Anna Lou Fletcher  
Catherine Gleason  
In Memory of Joseph Greve Jr.  
Marilyn Hamilton  
and Joseph LaGennusa  
DiGrace Hoiland  
Anne Izzillo  
The Javelinas  
Carole Klees  
La Plage Bistro

Pamela Lerner Home & Design  
Ann Marie and Gary Loesch  
Dennis and Michelina Maguire  
Joe and Tricia Manno  
The Pedra Family  
Dr. Mary Koslap-Petraco  
Old Purchase Properties  
Bill Rignola  
Barry Rockwell  
Dooner-Rockwell Trust

James and Anne Marie Rotan  
The Schmidt Family  
Diane and John Shea Jr.  
Don and Libby Steckler  
Judith Steinberg  
Tuzza Electric  
Maureen Veitch  
Neil Weingarten  
Allen and Angela Welcome  
Max Wendel

Joseph and Maryellen Gathard  
Dolores Gebhardt  
Judith Gorman  
Nancy Helgans  
Brian Hellmer  
Michael Hertz  
Mr. and Mrs. Jerome Hochman  
Ellen Hoffman-Budris and  
Maddy Budris  
Richard and Maryann Hoshino  
Charlie and Elly Jagde  
Carole Kennedy  
Nathan King  
Janice F. Klein  
David and Peggy Kulakowski  
Julie Lachman  
Darice Lang  
Angela Lehner  
Irene and Marty Leonard  
Melissa and Eliot Lieberman  
Long Island Jet Ski Rentals  
George Lomaga  
Ted and Lori Lucki  
Sharon Maler  
Gail M. Mancuso  
Dorothy Macleod  
Will McDaris and Jerome Ganz  
Maryann McInerney  
Victoria McLaughlin  
Elizabeth Meade  
Michael Mehary  
Francis and Patricia Miller  
Elizabeth Morris  
Gary Murphy  
Susan Nathanson  
Kevin Nicolellis  
Christine Novelli  
Kevin and Joy O'Brien  
Erin O'Leary  
Martin J. Olsen  
Mr. and Mrs. Robert G. O'Neill

Tammy Partlow  
Mary Eli Roarke  
Joseph and Debra O'Rourke  
Ann and Bill O'Shea  
Richard and Ruth Anne  
Otterstedt  
Patchogue-Medford Library  
Lou and Jeanette Paolillo  
Herbert and Eleanor Payne  
Bill and Patricia Perry  
Elizabeth Plisc  
Jean Pokorny  
Nancy Poulos  
Janice L. Raber  
Ronald and Maryann Ridolfi  
Kathleen Riorda  
Mr. and Mrs. Paul Rivera  
Ocean Rich Distributors  
Fran and David Shandel  
Patricia Sikorski  
Ruth Simon  
Mary Ellen Smith  
Robert Smosky  
Janine Spencer  
Laura Terwilliger  
Bonnie Underwood  
Candace and Thomas Usztoke  
Martin Valk  
Stephanie and Rosanne  
Vertichio  
Paula Warmuth  
Wendy Way  
Natalie Weder  
Donald Weimer  
Genie and Carol Weisman  
Nancy Wibben  
Peter E. Williams  
Linda and Richie Yakavonis  
Beth Zanazzi  
Kathy and Ira Zankel

## ★ CAST MEMBER \$250 +

Donna Berberich  
Pat Broidy  
Anne Cohan  
Robert and Gabrielle Corsetti  
Donald and Christine Crispi  
Kathy and Tom Cullen  
Annette Eaderesto  
Edward Jones  
Financial Advisors  
Donna and Robert Esp  
Kathleen  
and Michael Ennesser  
Jean Fleischer  
Kathleen Frigiola  
Jack Moter and Jane Graham  
Judith Hope  
Robert Irish  
and Julianne Williams  
Barbara Jehle  
Susan Kahl and Jim Vaughan  
Susanna Klein  
Jane Love  
Jeff and Stephanie Lundwall

Lisa and George Meyer-Fertal  
Mary Beth Minton  
Deborah Murphy  
NEXTGen Advertising Inc.  
Robert and Kathe Palermo  
Marcel Paul  
Barry Podgorsky  
and Gregg Lhotsky  
Nancy Poulos  
Tonja Pulfer  
Robert and Ann Quinn  
Sandy Reifel  
Tanice Reilly  
Alan Robins  
Barry Rockwell  
Jeannette and Mack Rossoff  
Dwight Stecker  
Brian G. Urkowitz  
Nancy and Roy Vaillancourt  
Carolyn and F. George Walsh  
Virginia E. Waterman  
Alison and  
Rob Wegener, TOLA

## ★ STAGE HAND \$100 +

Connie and Kent Adee  
Ivone and Joel Albala  
In Loving Memory  
of Robin J. Allan  
Robert and Mary Ambrose  
Mary Angelone  
Stephanie Bail  
Jess Baker-Edward Jones  
Theresa and Ed Baker  
Marie Barnouw  
Jo Bennett  
Susan Berner  
Michelle Blair  
Arthur Bremer  
Kathy Butler  
Jaime Canjura  
Paul J. Casale  
Carol Chester  
Janice and Michael Cohen  
Coleman Family

Thomas  
and Darlene Cummings  
The Dankievitch Family  
Derby Floors  
Dennis and Kathleen Desmond  
Gina DeVito  
Lexi Diamond and Jeff Fuisz  
Patricia Dima  
Nancy Duncan  
and Jamie Moog  
Phil Epstein  
Bonnie Evans  
Courtney Fairchild  
The Fawcett Family  
Dan Fink  
Laurie Foscire  
Fran Derby Floors  
The Freedberg Family  
Anita and Stewart Gaffan  
Michael and Patricia Garafola

## Reflects 2025-2026 Donations



*The Performing Arts Center of Suffolk County is a 501(c)3 non-profit organization - all donations are 100% tax-deductible. Thank you for your contribution to the future of the arts!*

If you would like to make a donation and have your name added to the list, please contact **Susan Daconto** at **631-286-8851** or email **[susan@thegateway.org](mailto:susan@thegateway.org)**

# PERFORMING ARTS CENTER OF SUFFOLK COUNTY

## BOARD OF DIRECTORS

Chair ..... Ken Searles  
 Vice Chairperson, Recording Secretary ..... Terry Tuthill  
 Corresponding Secretary, Treasurer ..... Gale Edwards  
 Directors ..... Paul Allan, Diane Giattino, Kim Giattino,  
 AJ Lebenns, Joseph Minutillo, Ann Nowak, David Ruttura

## ADMINISTRATIVE

Executive Artistic Director ..... Paul Allan  
 Director of Business Operations ..... Jeff Bellante  
 Associate Artistic Director ..... Michael Baker  
 Director of Development ..... Susan Daconto  
 General Manager ..... Joanne Tambasco  
 Human Resources ..... Laurie Cole  
 Company Manager ..... Chris Smith  
 Casting Assistant ..... Kaitlyn LaGrega  
 Production Photographer ..... Jeff Bellante  
 Bookkeeper & Grants Associate ..... Molly Lambert  
 Assistant Company Manager ..... Michael Pedra  
 Musician Contractor ..... Peter Pece  
 Office Assistant ..... Alicia Ann Seidler

## CREATIVE

Director ..... DeMone Seraphin  
 Music Director ..... Jacinth Greywoode  
 Choreographer ..... Ian Coulter-Buford  
 Associate Director ..... Elizabeth Addison  
 Associate Music Director ..... Jake Turski  
 Scenic & Projections Designer ..... Brian Pacelli  
 Lighting Design ..... Kim Hanson  
 Costume Design ..... Janine Loesch  
 Wigs, Hair, & Makeup Design ..... Dustin Lawson  
 Sound Design ..... Leonardo Mignola

## EDUCATION

Director of Education ..... Michael Baker  
 Education Administrator ..... Kaitlyn LaGrega  
 Instructors ..... Meghan Fawcett, Gabrielle Luthy,  
 Joseph Minutillo, Autumnmargaret Walthers,  
 Amy Woschnik  
 Accompanist ..... Christy Stark

## SUMMER CONSERVATORY

### THE WIZARD OF OZ: YOUTH EDITION

Director ..... Joseph Minutillo  
 Music Director ..... Peter Pece  
 Choreographer ..... Stephanie Vertichio-Brennan  
 Production Stage Manager ..... Keira Ballan  
 Assistant Stage Manager ..... Sophia Greco

## FACILITIES

Facilities Manager ..... John-Paul Baker  
 Cleaning Staff ..... Jasper Bailey  
 Grounds Maintenance ..... HTM Landscaping

## PRODUCTION

Director of Production ..... Brian Loesch  
 Production Stage Manager ..... Shawna Voragen  
 Technical Director ..... John Sabo  
 Properties & Paints Supervisor ..... Brittany Loesch  
 Lighting & Electrics Supervisor ..... Riley Noble  
 Costume Shop Manager ..... Janine Loesch  
 Audio Engineer ..... Leonardo Mignola  
 Wigs, Hair, & Makeup Supervisor ..... Dustin Lawson  
 Rentals Manager/  
 Associate Production Manager ..... Tony Tambasco  
 Assistant Stage Managers ..... Lexie Secrist, Rebecca Kleeman  
 Head Carpenter ..... Katie Cully  
 Wardrobe Supervisor ..... Izzy Mangiaracina  
 Lead Staff Carpenter ..... Emily Rinfret  
 Properties & Paints Assistants ..... Rev. Maige Anderson,  
 Leo Fuller  
 Staff Electrician ..... Shelby Fairchild  
 Staff Carpenters ..... Randal Bogues, Samuel Koch,  
 Juno Szymanski  
 Audio Assistant ..... Jake Rizzo  
 Costumes & Wardrobe Staff ..... Casey Young, Hailey Moore  
 Wigs & Makeup Assistant ..... Breanna Scheck-Gomez

## PRODUCTION APPRENTICES

Costumes & Wardrobe ..... Sonya Klinger, Rowan Kidd  
 Properties & Paints ..... Joey Salerno, Aiyana Torres  
 Electrics ..... Everett LaMantia, Sadie Leopold  
 Carpentry ..... Jacob Wallach, Sam Greenstein, Addison Moore

## BOX OFFICE

Box Office Manager ..... Laurie Cole  
 House Manager ..... Matthew Kraut, Robbie McGrath  
 Box Office/Group Sales ..... Abby Beodeker, Jamie Boneillo  
 Katie Ford-Mehrakens, Phyllis Kaye,  
 Maggie Mehrakens, Paul Tifford Jr  
 Front of House Supervisor ..... Matthew Kraut  
 Front of House Manager ..... Michael Pedra  
 Front of House Staff ..... Luke Allan, Alexa Allan, Ralph Bianco  
 Jamie Boneillo, Penny Broillet, Brice Childs,  
 Donald Childs, Aiden Cullen, Derek Griffin, Brian Hausle,  
 Joe Kraus, Danny Parr, Albert Jack Peterson,  
 Joey Salerno, Max Venezia

## VOLUNTEER USHERS

Cheryl Becker, Violet Bezler, Camille Brideson, Suzette Ciminelli,  
 Lorie Clifford, Mary Lou Cohalan, Tim Cole, Cornelia D'Aureli,  
 Melissa Donovan-Foglia, Al Ely, Pat Ely, Jody Evola,  
 Kristina Farmer, James Ficker, Patti Ficker, Patricia Felice,  
 Theresa Gabriel, Joyce Gambina, Geri Gerns, Bob Giovanelli,  
 Linda Good, Sue Greenleaf, Nanette Heintz, Janet Kelly,  
 Robert Koenig, Carol Krussman, Muriel Lanier, Patricia Leask,  
 Marie Lena, Diane Lovizio, Eileen Maida, Beatrice Marelli,  
 Dawn McKinney, Rita Mendrina, Connie Merced, Carol Niessing,  
 Linda Okolowich, Judy Onorato, Celmira Pachon, Kathy Pernice,  
 Peter Pernice, Louise Prinzivalli, Linda Randolph, Annette Reeve,  
 Sandy Reifel, Debra Sanda, Harold Schiffman, Linda Villano,  
 Diane Warren, Joseph Warren, Elizabeth Weeks

**GATEWAY PLAYHOUSE**  
 would like to thank our volunteer staff for their  
 dedication and support. It is much appreciated.

**IF YOU WOULD LIKE TO JOIN  
 OUR VOLUNTEER STAFF  
 CALL 631-286-0555**

# Exceptional Care for Your Child



**If your child needs medical attention, you can find top care right in your own backyard.**

Out of 6,000 hospitals evaluated, *Money Magazine* named Stony Brook Children's Hospital #1 for pediatric care in the state of New York — and #12 in the nation.

This ranking reflects what happens when compassion, innovation and a family-centered approach come together — children receive the best possible care.



Learn more at  
[stonybrook.info/  
moneymagazine-sbc](http://stonybrook.info/moneymagazine-sbc)

# La Plage

## BISTRO

### Classic French Bistro

Traditional French Comfort Food  
Craft Cocktails, Beer & Local Wines

### OPEN

Sunday, Monday,  
Wednesday, Thursday -  
12pm-9pm

Friday & Saturday -  
12pm-10pm



**Every Monday,  
Wednesday &  
Thursday**

### BAR SPECIALS

**Happy Hour 4-6**  
Half Price  
Wine & Beer

**Raw Bar Specials**  
\$2 Oysters  
\$1 Littleneck Clams  
\$2 Jumbo Shrimp

**Holiday Cocktail Parties, Catering and  
Private Events Available!**

**Call for Reservations | 934-451-3075**

14 Station Road, Bellport Village  
[www.laplagebellport.com](http://www.laplagebellport.com) | @laplagebistrobellport