

# 2009 PLAYBILL

*Gateway*  
PLAYHOUSE **60**  
*Years of  
Theater*

## M<sup>1</sup>ISS Saigon

TM

**JULY 8 - JULY 25**

*Gateway Theatre circa 1950*

We are celebrating our 60th Anniversary this season. Gateway Playhouse Bellport, brings you the show you are about to see, which is the third in our six show Broadway Series. Inside you will find an article depicting the third decade in our long history of bringing professional theater to Long Island.

# W<sup>m.</sup>J. O'Neill

Sales Exchange Co., Inc.  
Jewelers and Collateral Loanbrokers

Classic and  
Contemporary



Platinum  
and Gold

Jewelry designs that will  
excite your senses.

Expert Jewelry Repairs

One East Main St., Patchogue 631.289.9899 www.wmjoneills.com

Mention this ad for 10% discount on purchase

# Pine Grove Inn

## RESTAURANT

Established In 1910. Famous for almost 100 Years.

Visit the Pine Grove Inn and Experience its Old World Charm

Pine Grove Inn  
overlooks the lovely Swan  
River in Patchogue



- Open for Lunch and Dinner  
Tuesday through Sunday
- Join us every Friday from 4-6pm for  
Happy Hour & Complimentary Buffet
- Live Music Friday & Saturday Evenings

Now Serving Sunday Brunch 11am-2pm

### New Prix Fixe Menu

\$24.95 Lunch & Dinner

Soup or Salad • Entrée • Dessert • Coffee • Tea  
Available Sunday through Thursday  
Not available on holidays or for parties greater than fifteen.

- Extensive menu is filled with  
something for everyone
- Fresh Local Seafood • Prime Steaks
- Traditional German Classics
- Catering for all occasions –  
(3 separate rooms)



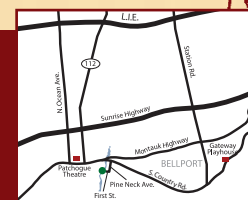
Tuesday &  
Wednesday  
Lobsterfest

Thursday  
Prime Rib  
Night



1 First Street, East Patchogue • 631-475-9843

Check our website: [www.pinegroveinn.com](http://www.pinegroveinn.com)  
for the current entertainment schedule.  
Closed Mondays



PRESENT THIS VOUCHER FOR  
**\$5 OFF LUNCH**  
on checks of \$35 or more

Expires August 1, 2009. Reservations suggested. Not valid on prix fixe menu.  
With this voucher. Not valid with other offers. One voucher per couple. Not valid on holidays.

PRESENT THIS VOUCHER FOR  
**\$10 OFF DINNER**  
on checks of \$80 or more

Expires August 1, 2009. Reservations suggested. Not valid on prix fixe menu.  
With this voucher. Not valid with other offers. One voucher per couple. Not valid on holidays.



# TRIO

at the  
Holbrook  
Country  
Club



## At Work, At Play or After The Play

**Excellent** ▶ Located in Holbrook,  
Just Minutes From  
Gateway Playhouse.

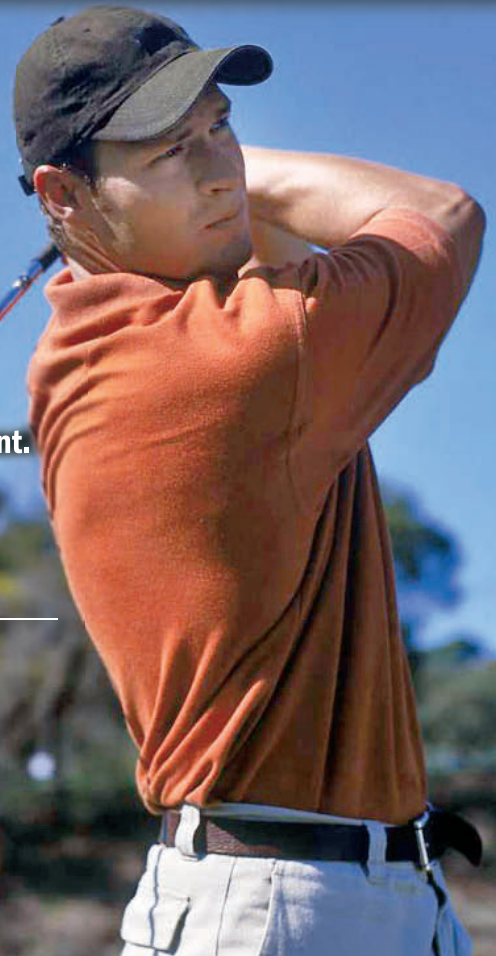
**Exquisite** ▶ Enjoy lunch or dinner at  
Frederick & Co. Restaurant.

**Elegant** ▶ Schedule your next affair  
at Trio's refurbished  
catering facility.

700 Patchogue-Holbrook Road  
Holbrook, New York 11741

**(631) 585-4433**

[www.triofinefood.com](http://www.triofinefood.com)



### Catering ▼ Fine Dining ▼ Golf

**Celebrating  
10 Years  
in Bellport**

# BELLPORT JEWELERS & GALLERIES

Master goldsmith, gemologist, numismatist & watch experts on staff  
**Visit us in Bellport Village before the show or schedule a house call!**

*Pietro Romano of Bellport Jewelers & Galleries  
has been named the exclusive designer of the  
Leonard's of Great Neck wedding jewelry line!  
Let Master craftsman Pietro Romano create for you!  
He can use your old gold & stones.  
Personal service is our number one priority.*

**Buying ALL Gold, Silver,  
Platinum Jewelry  
& Watches**

.925 Silver Flatware  
10K, 14K, 18K, 22K, 24K  
.925 Sterling  
dental gold

**WE EVALUATE & BUY IT ALL!**

**Diamonds**

1/4 ct .....	up to \$225
1/2 ct .....	up to \$1,500
1 ct .....	up to \$6,000
2 ct .....	up to \$19,000
3 ct .....	up to \$40,000
5 ct .....	up to \$60,000

**We buy all styles and shapes.  
Even broken stones.**

**Pre-1965 US SILVER Coins**  
All proof sets and mint sets/ingots.  
Paying 850% over Face Value!

Silver Nickels .....	1942-1945 .35 & up
Silver Dimes .....	1964 & before .85 & up
Silver Quarters .....	1964 & before \$2.12 & up
Silver Halves .....	1964 & before \$4.25 & up
Silver Clad Halves	1965-1970 \$1.35 & up
Silver Dollars .....	1878-1904 \$14.00 & up
Silver Dollars .....	1921-1935 \$12.00 & up

**US Gold Coins Before 1933**  
Also Maple Leafs, Eagles, Pesos,  
Pandas, Kruggerands

\$1 Gold .....	\$160 and up
\$2.5 Gold .....	\$185 and up
\$3 Gold .....	\$700 and up
\$5 Gold .....	\$300 and up
\$10 Gold .....	\$500 and up
\$20 Gold .....	\$900 and up
\$50 Gold .....	\$12,000 and up

Prices are for undamaged, XF and better coins  
**Certified PCGS and NGC coins wanted**

All prices quoted are subject to market fluctuation

**5 BELLPORT LANE, BELLPORT, NY 11713  
631-286-7700 • WWW.BELLPORTGALLERIES.COM**



# How we looked in the late 1960s to mid 1970s

As we travel through Gateway's six decades of time, with this PLAYBILL for "Miss Saigon" synchronicity prevails as we hit the Vietnam War era. Moving into our third decade, in the late 1960's the Pomeran siblings whittle down to one, Ruth Pomeran Allan stays in the area, helping her father Harry run the expanding family business. After producing new plays, and leading the theater in many successful ventures, David S. Pomeran moves to Los Angeles for a film production career. Gateway is called "The Paperback of Broadway." Producing newly released musicals, Pomeran forms the Suffolk County Performing Arts Ctr. There are upwards of 150 people living on the premises from teenage campers who perform in their own showcases, to apprentices who make up the choruses of the professional productions, while performing avant-garde pieces in the Barn. There are technicians, creative staff, and hired principal actors from Manhattan living on the premises as well, and a kitchen staff, who has to feed the massive sized crowd three meals a day. Mr. Pomeran, his wife Libby, and daughter purchase the food, hire the teachers, directors and designers, order the muslin,



Apprentice company rehearses VIET ROCK

interview the apprentices, cast the actors, enroll the kids, sell playbill advertising, tally the box office receipts. . . . summer, what summer? Basically no one even sees the beach. In 1974, Ruth and her husband Stan take the reins as Producers. The emphasis on longer runs, productions such as *Hair*, *George M!*, *No No Nanette* are presented. Stan's business sense is key in a tough economic time for the theater; his voice heard announcing each performance, continuing up to his passing in 2005.

Ruth's creative energy is behind the artistry of each production. Gateway audiences continue to grow and include subscribers from both counties on Long Island. The training continues. The Allans, along with their children Robin Joy and Paul begin to work as a family, Paul gravitates towards the technical end of the theater, carpentry, electrical and sound engineering; an integral part of the crew while still in middle school. Robin goes from "camper" to performing young roles on the Main Stage, while playing piano for rehearsals, student teaching dance and acting in the camp program.



Gateway ensemble: *Gypsy, Sound of Music* casts, 1969

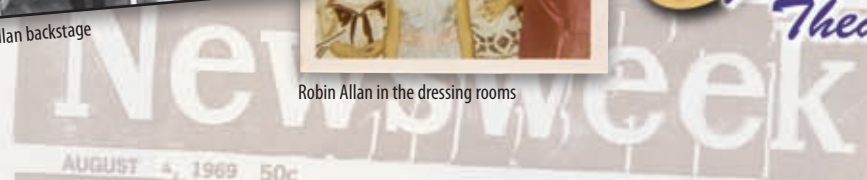


Paul Allan backstage



Robin Allan in the dressing rooms

**60**  
Years of  
Theater



## THEATER The Paperback of Broadway



BELLPORT PLAYHOUSE - BELLPORT, N. Y. 11713



New producers, the Allans, 1974



The sign as it appeared in 1965

\*\*\*\*\* GATEWAY PLAYHOUSE is the only summer theatre to produce plays in two theatres simultaneously - to offer a comprehensive training program - daily classes - similar opportunities for appearances in the BARN THEATRE productions. Gateway is a "package" theatre - casting is done from resident repertory company and jobbers.

Newsweek  
August 4th, 1969 edition



## BOB DURKIN

Ironically, *Miss Saigon* may just be Bob Durkin's 60th show at Gateway. Between the 50 shows printed here, to revivals of these shows to Children's Theater... We think we have hit 60 shows.

Thanks Bob, from all of us.

Dear Bob,

You are and were an answer to a prayer.

Remember back in the early 70's when the Gateway needed an immediate replacement for a director position? You were our dance teacher at the Gateway Workshop then. I said to my dad, "what about Bob Durkin?" I remember him saying, "he's our dance teacher!" I quickly answered, "Let's give him a shot at it." We did and needless to say, some 30 years later you have become one of our finest directors and friends. Our 60th Anniversary gives us a wonderful opportunity to recognize your talents and friendship which has helped us grow into the success we have attained.

You are an important part of our family.

For your talents, friendship, and love, I am grateful.

My love always,

Ruth  
(Allan, Exec. Producer)

**Avino's**  
italian table

**Bellport's New Eating Experience!**

108 South Country Road, Bellport Village • Phone: 631-803-6416 Fax: 631-803-6418



Presents

**RAUL ARANAS ALEX LEE TANO**

in

## MISS SAIGON

A MUSICAL BY ALAIN BOUBLIL AND CLAUDE-MICHEL SCHONBERG

Book by

**ALAIN BOUBLIL CLAUDE-MICHEL SCHONBERG**

Lyrics by

**RICHARD MALTBY JR. ALAIN BOUBLIL**

Music by

**CLAUDE-MICHEL SCHONBERG**

Adapted from the original French Lyrics by **ALAIN BOUBLIL**

Additional Material by **RICHARD MALTBY Jr.**

Originally Produced on the stage by **CAMERON MACKINTOSH**

Orchestrations by **WILLIAM D. BROHN**

with

**ALLEN D. HONG COLLIN LYLE HOWARD MARY MOSSBERG**

and

**SCOTT LASKA**

Producer

**PAUL ALLAN**

Associate Producer

**JEFF BELLANTE**

General Manager

**GALE EDWARDS**

Artistic Director

**ROBIN JOY ALLAN**

Company Manager

**MICHAEL BAKER**

Production Manager

**BRIAN LOESCH**

Wardrobe Supervisor

**MARIANNE DOMINY**

Scenery Design

**MICHAEL ANANIA**

Lighting Design

**DOUG HARRY**

Costume Design

**ALLEN WILSON**

Production Stage Manager

**DOM RUGGIERO**

Musical Direction by

**ANDREW GRAHAM**

Directed and Choreographed by

**BOB DURKIN**

Scenery originally designed and built for Pittsburgh CLO, American Musical Theatre of San Jose, and Paper Mill Playhouse. *Miss Saigon* is presented through special arrangement with Music Theatre International (MTI).

All authorized performance materials are also supplied by MTI.

421 W 54<sup>th</sup> Street, New York, NY 10019 Phone: 212-541-4684 Fax: 212-397-4684 www.MTIShows.com

# CAST OF CHARACTERS

Engineer..... RAUL ARANAS\*  
 Kim.....ALEX LEE TANO\*  
 Chris .....SCOTT LASKA\*  
 John..... COLLIN LYLE HOWARD  
 Thuy..... ALLEN D. HONG\*  
 Ellen..... MARY MOSSBERG\*  
 Gigi..... CHERYL DARO  
 Mimi .....TSUBASA OGAWA  
 Yvette..... RUMIKO OYAMA  
 Yvonne .....ERICA NADERA  
 Assistant Commissar .....ALAN ARIANO\*  
 Tam..... DAKOTA ASUNCIO  
 Captain Schulz..... ROBERT McCAFFREY  
 Club Owner.....ALAN ARIANO\*  
 Marine Captain..... CHRISTIAN MARRINER  
 Officer ..... MATTHEW NOWAK  
 Soldier 1 ..... ANDREW CRISTI\*  
 Soldier 2 .....EYMARD MENESES CABLING  
 Marine .....JUSTIN CERNE\*  
 Hustlers ..... BRIAN RUBIANO, ANDREW CRISTI\*

## ENSEMBLE

JULIE ALMERIA, ALAN ARIANO\*, EYMARD MENESES CABLING, JUSTIN CERNE\*, ANDREW CRISTI\*,  
 CHERYL DARO, MATTHEW FRAZIER, SCOTT MCLEAN HARRISON\*, SACHA ISKRA\*, ALEX JORTH,  
 MARVIN JOSHUA, CHRISTIAN MARRINER, ROBERT McCAFFREY, ERICA NADERA,  
 MATTHEW NOWAK, TSUBASA OGAWA, RUMIKO OYAMA, BRIAN RUBIANO, JOYCE RENA WONG

## UNDERSTUDIES

Chris ..... MICHAEL BAKER\*  
 Kim..... SACHA ISKRA\*  
 Engineer.....ALAN ARIANO\*  
 John..... MICHAEL BAKER\*  
 Thuy.....EYMARD MENESES CABLING  
 Ellen..... JULIE ALMERIA  
 Gigi.....ERICA NADERA

## MUSICIANS

Conductor/Keyboard ..... ANDREW GRAHAM  
 Sinfonist .....BRENDAN WHITING  
 Trumpet ..... JOE BOARDMAN  
 Reeds ..... MARK GATZ  
 Trombone..... GARY JONES  
 French Horn..... LEE DUKE  
 Percussion ..... PETE DESALVO



The Musicians employed in this production are members of the American Federation of Musicians.



\*Actors employed in this production are members of Actors' Equity Association, the union of Professional Actors and Stage Managers in the United States.



The Director/Choreographer is a member of the Society of Stage Directors and Choreographers, Inc., an independent national labor union.



JULIE ALMERIA



RAUL ARANAS



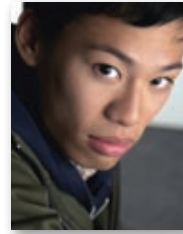
ALAN ARIANO



EYMARD MENESES CABLING



JUSTIN CERNE



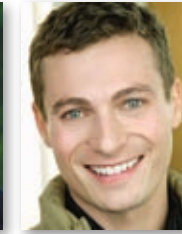
ANDREW CRISTI



CHERYL DARO



MATTHEW FRAZIER



SCOTT MCLEAN HARRISON



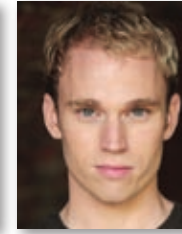
ALLEN D. HONG



COLLIN LYLE HOWARD



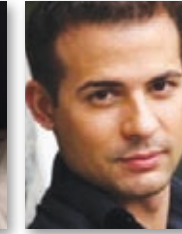
SACHA ISKRA



ALEX JORTH



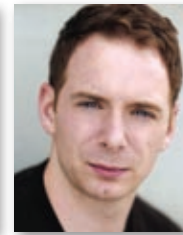
MARVIN JOSHUA



SCOTT LASKA



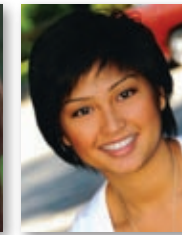
CHRISTIAN MARRINER



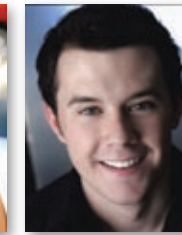
ROBERT McCAFFREY



MARY MOSSBERG



ERICA NADERA



MATTHEW NOWAK



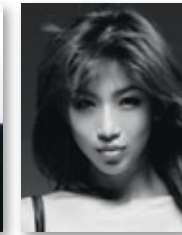
TSUBASA OGAWA



RUMIKO OYAMA



BRIAN RUBIANO



ALEX LEE TANO



JOYCE RENA WONG



ROLEX, BAUME & MERCIER,  
HEARTS ON FIRE, EBEL,  
CASATO, SWATCH, TISSOT  
FINE WATCHES & JEWELRY

JEWELRY, WATCH &  
AUTHORIZED ROLEX REPAIRS  
DONE ON PREMISES

APPRAISALS, CUSTOM DESIGN,  
WE PURCHASE GOLD

GIFT CARDS AVAILABLE,  
FINANCING AND ALL MAJOR  
CREDIT CARDS ACCEPTED

CONTACT US FOR MORE INFO AT:  
ROSEJEWELERS@HAMPTONS.COM

**ROSE**  
JEWELERS  
CELEBRATING LIFE'S EVENTS SINCE 1945

**SOUTHAMPTON**  
57 MAIN STREET  
(631) 283-5757  
PATCHOGUE

74 E. MAIN STREET  
(631) 475-1441

WWW.ROSEJEWELERS.NET



WE OFFER A FULL SELECTION OF

**PANDORA**™



## MUSICAL NUMBERS AND SCENES

### ACT ONE

Opening Act 1.....	Engineer, Gigi, Girls
The Heat Is On In Saigon.....	Engineer, John, Chris, Men, Kim, Mimi, Yvonne, Yvette, Gigi
The Movie In My Mind.....	Gigi, Kim, Girls
Bartering For Kim.....	Engineer, John, Marine, Chris, Ensemble
Kim & Chris Dance.....	Kim, Chris, Engineer
Why God, Why?.....	Chris
This Money's Yours.....	Chris, Kim
Sun & Moon.....	Kim, Chris
Unicorn.....	Kim
Telephone Sequence.....	Chris, John
The Deal.....	The Engineer, Chris
The Wedding.....	Kim, Chris, Gigi, Girls
Thuy's Intervention.....	Thuy, Chris, Kim
Last Night Of the World.....	Chris, Kim
The Morning of the Dragon.....	Engineer, Thuy, Asst. Commisar, Soldiers 1 & 2, Ensemble
I Still Believe.....	Kim, Ellen
Coo-Coo Princess.....	Engineer, Kim, Thuy, Ensemble
Thuy's Death.....	Thuy, Kim, Ensemble
If You Want To Die In Bed.....	Engineer
Kim & Engineer.....	Kim, Engineer
Finale Act 1.....	Kim, Engineer, Ensemble

### — INTERMISSION —

### ACT TWO

Opening Act 2.....	Male Ensemble
Bui-Doi.....	John, Male Ensemble
Post Bui-Doi.....	Chris, John, Ellen
Bangkok.....	Engineer, John, Kim, Club Owner, Hustlers, Club Girls, Ensemble
Please.....	John, Kim
Chris Is Here.....	Engineer, John, Kim, Club Owner
Kim's Nightmare (Part One).....	Thuy's Ghost
Kim's Nightmare (Part Two).....	Chris, Kim, Schultz, Workers, Officer, Marine Capt., Marine
Kim's Nightmare (Part Three).....	Chris, John, Kim, Marine, Ensemble
Sun & Moon Reprise.....	Kim
Kim & Ellen.....	Kim, Ellen
Now That I've Seen Her.....	Ellen
Ellen & Chris.....	Ellen, Chris, John, Kim
Paper Dragons.....	Engineer, Kim
The American Dream.....	Engineer, Ensemble
Finale Act 2.....	Kim, Chris

**South  
Country  
Inn**

*Fine Italian and Continental Cuisine*

*A short drive from both theatres  
on South Country Road.*

Special packages for parties &  
theatre groups.

Open Tuesday - Sunday, Noon-10p.m.  
Reservations recommended



Moderately Priced Entrees

Prix Fixe Dinners - 3-6 PM Tues-Sun - \$22.95

Daily Lunch Specials - Tuesday-Sunday

668 South Country Rd., East Patchogue

**758-1919**

[www.SouthCountryInnRestaurant.com](http://www.SouthCountryInnRestaurant.com)



**Complimentary  
Glass of Wine**

OR

**\$10 Off Any  
Dinner Check Over \$80**

with your lunch or dinner when you present  
show tickets or this ad. Not to be combined.

When you present your show tickets or this ad. 1 coupon per couple.  
Not to be combined. Not valid on Holidays. Expires 10/17/09.

Stop in today  
and visit these  
*Bellport  
Shops*



**EXPLORER OF THE SEAS®**  
SAILING YEAR ROUND FROM  
CAPE LIBERTY, BAYONNE, NEW JERSEY  
For more information contact your Royal Caribbean Experts!  
**Bay Travel & Tours**  
440 South Country Road • East Patchogue, NY 11772  
www.baytravelandtours.com • info@baytravelandtours.com  
**631-447-6440**  
\*All itineraries are current at the time of printing and subject to change without notice. Certain restrictions apply. ©2008 Royal Caribbean Ltd. Ships registry: The Bahamas. 08011591 • 05/07/2008

**Present this ad  
for on-board credit  
with any new  
Royal Caribbean  
Booking for 2009**



*South Shore  
Wines & Liquors*

- Weekly Wine Tastings
- Special Orders
- 10% Off Case Purchases

Email for our  
Wine Tasting of the Week  
southshorewine@gmail.com

440A South Country Rd.  
East Patchogue  
**(631) BUY-WINE**  
2 8 9 - 9 4 6 3

**MVP Automotive**  
Service Center  
HONEST PROFESSIONAL SERVICE



Foreign  
&  
Domestic  
24 Hour Towing

152 South Country Road  
Bellport Village, NY 11713  
Phone: (631) 776-1010  
www.mvpautomotive.com  
**10% OFF Service with this Ad**

**We've been  
expecting you.**

Ready to be recognized as a Premier client around the world?  
Local and global recognition. Dedicated Relationship Manager. Seamless global banking.  
Start a Premier relationship today.

us.hsbc.com 1-800-975-HSBC **HSBC PREMIER**

**Patchogue Office**  
325 E. Main St.  
Patchogue, NY 11772  
631-475-2600

**Bellport Office**  
20 Station Road  
Bellport, NY 11713  
631-286-3800

**Mastic Office**  
1718 Montauk Hwy.  
Mastic, NY 11950  
631-281-6400

Deposit products in the United States offered by HSBC Bank USA, N.A. or HSBC National Bank USA. Both are Member FDIC. ©2007 HSBC Bank USA, N.A.

**JULIE ALMERIA** (*Ensemble u/s Ellen*) a recent graduate of the American Musical and Dramatic Academy, is absolutely thrilled to be making her professional debut with such a wonderful production. She would like to thank her family and friends for their unending support, especially Mom, Dad, Grandpa, Kay, Mary, Jus, Ariel, and Luke. She is also incredibly grateful to everyone at Gateway for this opportunity. Enjoy the show.

**RAUL ARANAS** (*Engineer*) Broadway: *Loose Ends*, *Miss Saigon*, *The King and I*, *Flower Drum Song*. Off-Broadway: *Beast* (NYTW), *Mother Courage* (Delacorte/Public Theatre), *Dogeaters* (Public Theatre), *Jungle of Cities* (Public Theatre). Tour: *Miss Saigon* (Helen Hayes Award, Carbonell Award, Jefferson Award Nom-1<sup>st</sup> National Company). International: *Miss Saigon* (Theatre Royal London). Regional: *Giant* (Signature Theatre), *Pacific Overtures* (IRNE Award, North Shore), *Oliver* (Gateway Playhouse). Film & TV: *Burn After Reading* (Coen Brothers), *Afterwards* (with John Malkovich), *Buzzkill*, *JFK*, *Company Man*, "Law and Order", "Gideon Oliver".

**ALAN ARIANO** (*Club Owner u/s Engineer*) Broadway: *M. Butterfly*, *Jerome Robbins' Broadway*, *Shogun: The Musical*, *Miss Saigon* (Original Company, ten years to the day) and *Flower Drum Song* (National Tour). Off Broadway: *Shanghai Moon* opposite Charles Busch and Prospect Theater's world premier of *Honor* by Peter Mills. Regional Theaters: Kennedy Center, Opera Pacific, Pioneer Theater, Fifth Ave, TUTS, California Music Theater, Weston Playhouse. Favorite roles: *King & I* (King & Kralahome), *Les Miserable* (Bishop & Grantaire), *Mame* (Ito), *Once Upon A Mattress* (Jester), *The Tempest* (Gonzalo). Television: "SNL", "As The World Turns", "One Life To Live", "Parco P.I.", and "Law & Order" as Detective Hai Xiong.

**DAKOTA ASUNCION** (*Tam*) Six year old Dakota is extremely excited to be doing this production of *Miss Saigon*! He's been dancing since he was two-and-a-half years old at Glen Dance Studio in Glen Cove, and he would like to thank his mom, dad, and little brother Dylan for their love and support!

**EYMARD MENESES CABLING** (*Ensemble u/s Thuy*) is thrilled to join *Miss Saigon* at the Gateway Playhouse. Tours: North American Tour of *Miss Saigon* (The Engineer), Asian Tour of *The King and I* (The Kralahome), *History of the Word* (Ali) at the Apollo Theater. Favorite roles: *Miss Saigon* (Thuy) at Cohoes Music Hall and Arizona Broadway Theatre, *Aida* (ensemble, u/s Mereb), *Thoroughly Modern Millie* (Bun Foo), *Honor* (Prospect Theater Company), *One Red Flower* (Marion Johnson), *Once on this Island* (Daniel), *Company* (Larry) dir. by Billy Porter. B.F.A in Drama from Carnegie Mellon University. I love you Mom, Dad, Eric, and Ma.

**JUSTIN CERNE** (*Ensemble/Dance Captain*) Justin is pleased to be a part of this wonderful production. This marks a return to the stage as he has most recently been serving as a director and choreographer throughout the country. Some favorite on stage credits include *Jerry Springer the Opera* (Vegas), *Al, Don, Larry*, and even Paul in *A Chorus Line*, *Hello Dolly* and *Mame*. [www.justincerne.com](http://www.justincerne.com)

**ANDREW CRISTI** (*Ensemble*) Gateway Debut! Last seen as "Jimmy" in *Durango* at Cincinnati Playhouse in the Park. New York: *Evita*, *Sound of Plaid*, *Tisch On Broadway* (hosted by Billy Crystal), *Welcome To The World* (Andrew Lipka Tribute Concert). Regional: Merry-Go-Round Playhouse, Fireside Dinner Theater. Commercial/Industrial: JC Penney/MTV, PWC. BFA from the Tisch School of the Arts at NYU (CAP21). For more information, please visit [www.andrewcristi.com](http://www.andrewcristi.com).

**WARNING** – The photographing or sound recording of any performance is strictly prohibited. Gateway Playhouse offers a wireless sound enhancement system for the hearing impaired. Inquire at the box office for more information.

**FIRE NOTICE** — The exit indicated by a red light and sign nearest to the seat you occupy, is the shortest route to the outside. In the event of fire or other emergency, please do NOT run. WALK to that Exit. However, under normal circumstances, when leaving the Theatre, use the center rear exits. SMOKING is prohibited in the BUILDING, as required by the Suffolk County NO SMOKING Ordinance. Smoking in any area designated "No Smoking" renders the offenders subject to a fine, or imprisonment, or both.



**DebraCanavan**  
CLASSICS

- Michael Stars
- Milly
- Free People
- Shoshanna
- Susana Monaco
- Roxy
- Havaianas



**Casual, Career & Cocktail**

53 Main Street, Sayville – 631.563.9385



**MONI'S**  
**AUTO WORKS**

**It's in the Details**

Expert Auto Collision Repairs  
All Insurance Accepted

1791 Montauk Highway  
Bellport, NY 11713

**286-2116**

## Theatre Special - 10% OFF Dinner

### For The Good Times!

Enjoy the warm, welcoming atmosphere and fine food at the BrickHouse Brewery & Restaurant and **SAVE 10% OFF your entire dinner bill.**

Just present your tickets for before dinner dining, or your stub for after dinner dining, and receive 10% Savings.

10% savings valid 2 hours prior or after show date and time at the Gateway Playhouse or Patchogue Theatre. Cannot be combined with any other discount offer. Valid for lunch or dinner.



Open Daily 11 AM

67 W. Main St., Patchogue (631) 447-2337 • (631) 447-BEER

[www.brickhousebrewery.com](http://www.brickhousebrewery.com)



**CHERYL DARO** (*Gigi/Ensemble*) is a native Californian with Broadway in her heart. Finishing her 1<sup>st</sup> year at the Atlantic Theater School and in NYC, she is honored to be playing one of her dream roles this summer. Her favorite performances include: *The Wild Party*, *Peter Pan*, *Evita*, and *Chess*. Cheryl is proud to be a part of this talented ensemble and to be performing in Gateway's 60<sup>th</sup> season. She would like to thank Mark Shunock, the ladies at KSR, Jacole Kitchen and Jo Bowman, and the amazing faculty at Atlantic. I love you Mom and Dad. This year is the one!

**MATTHEW FRAZIER** (*Ensemble*) A graduate of the American Musical and Dramatic Academy, Matthew is extremely excited to be joining the cast of *Miss Saigon* after finishing a run of *Story Park: An Original Play*, *Miss Saigon*, *The King and I* and *Seussical*. Matthew is currently studying improv with the Upright Citizens Brigade located in New York City. This is his first production with the Gateway Playhouse. This summer Matthew will be in another production of *Miss Saigon* with the Coeur d'Alene Summer Theatre in Idaho. For more information about Matthew, please visit [www.matthewfrazieronline.com](http://www.matthewfrazieronline.com).

**SCOTT MCLEAN HARRISON** (*Ensemble*) is happy to be making his Gateway debut. Off Broadway/NYC: *Rocket Boys* (original cast), *NBS!*, *The New York Times*, *Stop! Look! Listen!*, *Bring Back Birdie*. National Tours: *Oklahoma!* (first national revival), *Big River*, *Go Diego Go Live!* (original cast). Favorite regional: *Hello, Dolly!* with Sally Struthers, *The Foreigner*, *Little Women* with Margaret O'Brien, *Pippin*, *Anything*

JOE

281-0376

**SHIRLEY SLEEP SHOPPE**

618 Montauk Highway • Shirley, NY 11967



Complete Line of Conventional,  
Waterbeds & Futons

*Who's Who*

Goes. Television: "Life on Mars," "Law and Order," "Royal Pains," "King of the Rodeo" by the Kings of Leon, "Going to Extremes." Thanks to M&D and Bob. [www.scottmcleanharrison.com](http://www.scottmcleanharrison.com)

**ALLEN D. HONG** (*Thuy*) is thrilled to be revisiting the role of "Thuy" for Gateway Playhouse's production of *Miss Saigon*. He began his theater career originating the role for the 1st National Tour of *Miss Saigon*, screaming and dying his way through 3 years and 8 shows a week for Cameron Mackintosh! Born and raised in Hawaii, he is a self-taught singer, composer, and producer. He was the voice of the Prince in Warner Brothers' animated *The King & I*. Currently he has written and produced for pop star Digo Padovan of Brazil. Thanks and aloha to Gateway Playhouse!

**COLLIN LYLE HOWARD** (*John*) is excited to make his debut at Gateway Playhouse. A graduate of The Hartt School with a B.F.A in Music Theatre, favorite roles include; Black (Lippa's *Wild Party*), Hud (*HAIR*), Booker T. Washington (*Ragtime*), Tom Robinson (*To Kill a Mockingbird*), Boyet (*Loves Labour's Lost*). He is currently working on his solo cabaret debut entitled *Me Is Enough!*. Much thanks to my family, the family, and my TR family! Thank you for all your love and support.

**SACHA ISKRA** (*Ensemble u/s Kim*) New York: *Shogun Macbeth* (Fujin MacDuff), *The Joy Luck Club* (Lena St. Clair), *The Cherry Orchard*, *The Tempest*. Regional: *Miss Saigon* (Kim), *Metamorphoses* (Myrrha), *Pirates of Penzance*, *The Vagina Monologues*, *Evita*. Fall 2009 - *Imelda*: a New Musical, off-Broadway with Pan

Dave's

**Bellport**  
**Cold Beer & Soda**

Over 700  
Varieties of Beer  
Monthly Beer  
Tastings

8-Tap Growler Station • Knowledgeable Staff • Beer • Soda  
Kegs • Ice • Snacks • Cigarettes • Fine Cigars • Home Delivery

417 Station Road • Bellport NY 11713

**631.286.0760**

[www.bellportbeer.com](http://www.bellportbeer.com)

Asian Repertory. Sacha is a recent graduate of William Esper Studio, an alumnus of Rutgers, and a member of Actors' Equity. She also owns a bo staff, a boken, a loofah and is not afraid to use any of the three. Much love and thanks to Bob and my Gateway family for an amazing experience. Edz', Mom, Dad - this is for you.

**ALEX JORTH** (*Ensemble*) is thrilled to be making his Gateway Playhouse debut. He is fresh off the bus from the 10th Anniversary National Tour of *Footloose* with Prather Entertainment Group. Other PEG shows include *Hello, Dolly!* and *Wonderful Town*. Some other credits include *Dames at Sea* (Dick/Porthouse Theatre); *Fiddler on the Roof* (Fyedka), *The Boy Friend* (Bobby), *Seussical* (Wickersham) and many others all at Little Theatre on the Square. BFA, Millikin University. Much love and thanks to his mom and dad back in Davenport, IA for all the endless love and support!

**MARVIN JOSHUA** (*Ensemble*) is excited to join Gateway's production of *Miss Saigon*. He is best known for his performances of Negro Spirituals, having recorded them for a gospel radio station. Favorite roles include Agwe from *Once On This Island*, the Narrator from *The Rocky Horror Show*, and Rusty from *At The Lincoln Theatre* a new musical from Harold Johnson of Motown fame. Thank you Father God from whom all blessings flow!

**SCOTT LASKA** (*Chris*) Scott is thrilled to be making his Gateway debut. His previous credits include *Carousel* (Billy Bigelow) and *The Pajama Game* (Sid) for Tri-Arts, as well as *Hair* (Claude) for BCP. He also recently reprised the role of Jerry in *The Full Monty* at The Sharon Playhouse. Last year, Scott finished filming *Kicking the Dog*, which was released in April. Other favorite roles include Riff in *The Rocky Horror Show* and Frankie in Sam Sheppard's *A Lie of the Mind* (Access Theater). Scott is a graduate of the

British American Dramatic Academy in London, The Connecticut School of Broadcasting, and holds a BFA in Acting from Marymount Manhattan College. His favorite role though, by far, is father to his 6 month old son Jack.

**CHRISTIAN MARRINER** (*Ensemble*) recently graduated from American Musical and Dramatics Academy, Christian is excited to be participating in his first professional musical with Gateway playhouse. Christian would like to thank his family and friends for their endless support.

**ROBERT MCCAFFREY** (*Ensemble*) NYC: *Sweet Bird of Youth*, *Rimers of Eldritch*, *Is There Life After High School?* Regional: *Damn Yankees* (Joe Hardy), *Tommy* (Capt. Walker), *Forum* (Hero), *Deathtrap* (Clifford), *Wizard of Oz* (Tinman), *Cabaret* (Max), *I Love You, You're Perfect... My Way*, *Fascinating Gershwin*. Born and raised in Farmingdale, LI. It's good to be home. Thanks to Family, Forman and Reagan. You guys are my heart.

**MARY MOSSBERG** (*Ellen*) is so happy to be back at Gateway where she performed the role of Betty Blake Rogers in last years' production of *The Will Rogers Follies*. Other credits: *Next to Normal* (Standby for Alice Ripley) at Arena Stage, DC; the National Tour of *Mamma Mia!* (ensemble and Donna/Rosie cover); Paper Mill Playhouse's *The Baker's Wife* (yet again, a cover for Alice Ripley); Flat Rock Playhouse's *Children of Eden* (Eve/Mama Noah) and *I Love You, You're Perfect, Now Change* (Woman #1); Tennessee Repertory Theatre's *Nonsense* (Sister Mary Leo); and The Gallery Players' *Chess* (Svetlana) and *The Mystery of Edwin Drood* (Edwin Drood). Warmest thanks to my dearest angels, Maggie Maes, Kimberly Vaughn, Nicholas Keslake and Ma. Proud member of AEA.


**ERICA NADERA** (*Ensemble u/s Gigi*) was recently seen on the Cape Fear Regional Theater stage in her professional debut as Anita in *West Side Story*. A recent high school graduate, she has been featured in numerous



is the official landscaper of  
**Gateway Playhouse**  
 all work done by owner  
 Nicholas J. Harding  
**631-475-0636**

**Bellport Country Club**  
 3-course prix fixe Dinner - \$24.95  
 Tuesday - Sunday  
 Reservations recommended  
**www.bellportcountryclub.com**  
**286-4227**  
  
**40 South Country Road, Bellport**

**Swan Bakery**  
 All Occasion Cakes  
 Guy Gagliano  
 The Official Bakery of Gateway Playhouse  
 15 South Country Rd., East Patchogue, NY 11772  
 (631) 475-9626

**A PUB OF THE OLD STYLE**  
*Pub Fare That Will Make Your Tongue Smile*  
  
*Relax Before or After The Show — Full Bar & Menu*  
 Kitchen Open 11 AM to 11 PM (Mon. thru Sat.) — Bar 'til 1 AM  
**70 North Ocean Avenue • Patchogue • (631) 289-1900 • www.reeses1900pub.com**



theatrical productions in North Jersey: *Man of La Mancha* (Aldonza), *You're a Good Man, Charlie Brown* (Lucy), *High School Musical* (Gabriella), *The Crucible* (Tituba). Erica is also an accomplished pianist, violinist, and bassist, having played for several pit orchestras. Awards: Miss Philippines America 2007 and 1st runner-up in the Miss Teen Philippines USA pageant.

**MATTHEW NOWAK** (*Ensemble*) is thrilled to be making his gateway debut! Other exciting credits include *Green* a new works showcase at The Makor Theatre, NYC, *Rags* at Nokia Theatre, NYC as well as all the wonderful shows at GIM 2005. Thank you to Robin, Will, MTF and of course my mom for all her love and support. Matthew is a graduate of The Boston Conservatory with a B.F.A. in Musical Theatre.

**TSUBASA OGAWA** (*Ensemble*) is originally from Japan. She received a BA in dance from The New School in NYC. Her musical theater

credits include *Miss Saigon*, Asian Tour of *The King and I*, *Peter Pan*, *Les Miserables*, and *Annie*. She is a member of a modern dance company, MAD about dance, and performs at various venues in NY. She also frequently performs as a back-up dancer at MGM Grand and Fox Theater in CT.

**RUMIKO OYAMA** (*Ensemble*) is thrilled to work with the Gateway Playhouse. Her past credits include *The King and I* (Angel George/Ensemble, Carousel Dinner Theater), *Beauty and the Beast* (Fairy, Players Theater), *The Lion King* (Dancer, Shiki Theater Company, Tokyo and Nagoya), and *The Glass Menagerie* (Laura, Here & There Theater Company, Tokyo). Rumiko recently performed as a dancer in the Broadway workshop, *Bruce Lee: Journey to the West* (dir. Bartlett Sher). Special thanks and love to her great friends, teachers, and family.

**BRIAN RUBIANO** (*Ensemble*) recently finished an off-off Broadway show entitled

*Go-Go Killers* as one of the Go-Go Boys. He also performed for the 47<sup>th</sup> season of "La Mama International Dance Fest NYC". Brian was an actor in the DC area before moving to NYC. Other theater/stage credit includes *Tops* in Blue World Tour (Vocalist/Dancer/Air Force Entertainment); *Aida* (Mereb/American Music Stage); *Evita* (Ensemble/Open Circle Theater); *Hansel and Gretel Eat Crabs A New Musical* (Sandman/Active Cultures Theater); *Edward III* (Ensemble/Washington Shakespeare Company); *A Funny Thing Happened.....Forum* (Ensemble/Kensington Arts Theatre). Brian is also a Nationally Registered Occupational Therapist and currently has a license to practice in the state of New York.

**ALEX LEE TANO** (*Kim*) Born and raised in Korea, Alex came to the United States to study, and first came to prominence on Broadway as the star of the mega hit *Miss Saigon*. Since then she has starred in many musicals around the world

including the role of Lorraine, the heroine, in the hit European musical *Dracula*. Chosen by Disney to be the voice of *Mulan* in the movie's Korean release, she was also invited to play the role of Princess Jasmine in Disney's musical spectacle *Aladdin*. Aside from the many musicals she has done, Alex has also appeared as a featured soloist in concerts around the world. Most memorable are the celebratory performances for the Presidential Inauguration and the World Cup Series as well as performances before such world figures as the Princess of Spain, the president of the International Olympic Committee and the Prime Minister of Australia to name a few. She's glad to be back at Gateway, and excited to reprise a role she holds so dear!

**JOYCE RENA WONG** (*Ensemble*) is so thrilled to be a part of this production of *Miss Saigon*! A huge thank you to Maggie and Michael, you two rock my world! Another thank you to James, Roxann, Javore and Brad Simmons for

**DOMINICAN SISTERS  
FAMILY HEALTH SERVICE**

...a healing presence serving  
Suffolk County for over 45 years.

**CERTIFIED NON-PROFIT  
HOME HEALTH CARE SERVICES**

Skilled Nurses & Home Health Aides  
Physical, Speech & Occupational Therapies  
Social Work & Pastoral Counseling  
Long Term Home Health Care  
HIV/Aids Care Programs

Call us at our offices  
Medford: 631.736.1527  
Hampton Bays: 631.728.0181  
Wainscott: 631.537.6759

www.dsfs.org

We accept Medicare, Medicaid & most private health & managed care insurance




LANDSCAPE SERVICES

Design • Patios • Ponds

Roger May

PO Box 652 • Bellport, NY 11713  
631.286.0941 • www.lawontasia.com



**RICHARD B. MILLER**  
Assistant Branch Manager  
First Vice President  
Investment Officer

**ROBERT A. NOGRADY**  
Branch Manager  
Senior Vice President  
Investment Officer

**WACHOVIA  
SECURITIES**

Wachovia Securities, LLC  
500 West Main Street • Suite 105 • Babylon, NY 11702  
Tel 631 661-1600 Fax 631 661-0099 Toll Free 877 613-1600  
richard.miller@wachoviasec.com • robert.nogrady@wachoviasec.com



**J&R's STEAK HOUSE**  
THE GREAT AMERICAN RESTAURANT

**LARGE STEAKS  
LOW PRICES  
BIG VALUE**

**CHOSEN #1 STEAKHOUSE  
IN SUFFOLK COUNTY**  
FOR BEST BEEF FOR THE BUCK BY NEWSDAY  
4/16/09 PART 2 - "DEALS THAT SIZZLE"

**MORE THAN  
15 MEALS  
FOR UNDER \$15**

**OVER JUST  
25 LUNCHES  
\$8.99**  
INCL.: SOUP OR SALAD & 2 SIDES

**SENIOR CITIZENS DAY  
(ALL DAY TUESDAY)**  
INCLUDES SOUP OR SALAD,  
ENTREE, DESSERT,  
COFFEE OR TEA.  
**FROM \$12.99**

**EARLY BIRD ITEMS  
MON.-FRI  
3-7 PM  
STARTS AT \$12.99**

**BLACK BOARD  
SPECIALS DAILY**

**KIDS EAT FREE SUN-THURS**  
ONE WITH EACH FULL PAYING ADULT

**WWW.JANDRSSTEAKHOUSE.COM**

**CALVERTON 727-7218** **ROCKY POINT 744-2101** **PATCHOGUE 475-9200** **MEDFORD 475-3839** **STONY BROOK 689-5920** **COMING TO ISLIP IN JUNE**

helping me do things I never thought I could. To my wonderful family and friends, your support means the world to me. And last but not least, Josh...I'd be nowhere without you.

**BOB DURKIN** (*Director/Choreographer*) Bob's work has been represented both nationally and internationally in tours of *Big River*, *The Unsinkable Molly Brown*, *Dreamgirls*, *Seven Brides for Seven Brothers*, *Anything Goes*, *Purlie*, *The Goodbye Girl*, *One Mo' Time*, *Little Shop of Horrors*, *They're Playing Our Song*, *Hello Dolly*, *Crazy for You*, and *Ain't Misbehavin'*. In 1997 he was the recipient of the Connecticut Critic's Circle award for outstanding choreography for his work on the national tour of *Seven Brides for Seven Brothers*. He was Tommy Tune's co-choreographer for the pre-Broadway workshops of *Irving Berlin's Easter Parade*, starring Tommy Tune and Sandy Duncan, in both Sydney, Australia and in New York City. He has also worked many years with the late Broadway director Phillip Oesterman. Bob's work has been seen by audiences in Brazil, Columbia, Spain, Italy, Portugal, Germany,

Austria, Finland, Ireland, Scotland, Singapore, Hong Kong, Malaysia, all over the United States and in Canada. Bob is a graduate of The Boston Conservatory of Music. In addition, Mr. Durkin has been associated with West Point Military Academy, Alabama University Birmingham, West Virginia University, Oklahoma City University, Marymount Manhattan College, Wagner College, and the University of Vermont as a guest artist and teacher.

**ANDREW GRAHAM** (*Musical Director*) National tours: *Avenue Q* (1st National), *Pippin*, *Thoroughly Modern Millie* (1st National), *Oliver*, *Seussical the Musical* (1st National starring Cathy Rigby), *The Music Man*, *Footloose*, as well as the European touring productions of *Grease* and *Hair*. Regionally he has music directed *Aida* and *Annie* (starring Beth Leavel) at the MUNY, *Aida* and *Fame* (starring Jonathan Groff) at North Shore Music Theatre, *Aida* at Gateway Playhouse and *Avenue Q* and *Spamalot* (starring John O'Hurley), at the Las Vegas Wynn Casino. He has accompanied such artist as

Beyonce, Danny DeVito, and Dakota Fanning. He holds degrees in music from both Capital University in Columbus, OH and Trinity College of Music in London England.

**DOUG HARRY** (*Lighting Designer*) is happy to be designing another Gateway production. His past credits here include *Dream Girls*, *Carousel*, *Cats* and *Fosse*, and also *Miss Saigon* (2003), *Scarlet Pimpernel*, *Ragtime*, *Titanic*, and *Dracula* the Rock Opera. Doug holds a degree in Theatre Production and Stage Management from the Guildhall School of Music and Drama in London, UK. He is currently the Production Manager for the International Festival of Arts & Ideas in New Haven, CT. And his company 'DarkSide Design' does corporate work for General Motors, Six Flags Theme Parks, New Haven Symphony, Calvin Klein and numerous other clients. Doug lives in Connecticut and is married with two children, two dogs, various cats, fifteen chickens, and a toad. He very much enjoys his short vacations in Bellport!!

**ALLEN WILSON** (*Costume Designer*) graduated with a Degree in Theater from the University of St. Louis. Among his many theatrical accomplishments he has directed, produced and designed over 200 stage productions. Formally the resident costume designer for The Mark Two Dinner Theater, Allen moved to COSTUME WORLD in 2001, one of the countries largest costume rental houses based in south Florida. He has since designed many new shows for professional theatres such as the Orlando Broadway Theatre, Light Opera Works and Art Park, and the tours of *State Fair*, *Singin' in the Rain* and *Titanic* for Candlewood Productions. Allen is very pleased to once again be working with the Gateway Playhouse where previously his designs were seen in *On the Town*, *Carousel*, and last summer's *Beauty and the Beast*.

**DOM RUGGIERO** (*Production Stage Manager*) Dom Ruggiero, a member of Actors Equity, has been stage managing for the past 27 years. Broadway PSM credits include *The Gathering*



Norman Orsinger Woodworking Ltd.  
258 West Woodside Ave.  
Patchogue, N.Y. 11772  
631.289.0846 - Showroom  
516.449.0986 - Cell

*The finest in custom furniture,  
cabinets, and millwork.  
For more information visit our  
website or call us today!*

[www.NormanOrsingerWoodworking.com](http://www.NormanOrsingerWoodworking.com)



starring Hal Linden, *Borscht Belt* on Broadway starring Bruce Adler and Mal Z. Lawrence, and *Ain't That a Kick in the Head* – the Music of Sammy Cahn directed by Chet Walker. 1st National Tours include: *The Cole Porter Songbook* starring Melba Moore, *The Irving Berlin Songbook* starring Carole Lawrence, *Greetings! Shalom Aleichem Lives* starring Judy Kaye, Bruce Adler and Theo Bikel. Dom has stage managed across the US, Europe, South America and Australia with *Ain't Misbehavin*, *Phantom*, *Anything Goes*, and *Song & Dance* among many others. He is no stranger to the Gateway Playhouse, having begun his involvement 20 years ago with his production of *Little Shop of Horrors*, which he also directed. Dom has directed numerous shows for Gateway, most notably the 3 productions of *Phantom*, *Tommy*, *Cabaret*, and *Once on This Island*. Dom also directed Gateway Playhouse's production of *Beauty and the Beast* last summer, and will direct this summer's upcoming production of *The Drowsy Chaperone*.

**ROBIN JOY ALLAN** (Casting and Artistic Director) has been the Casting Director at Gateway for the last fifteen years. This will mark her seventh year as Artistic Director. Robin spent most of her early life performing, directing, musical directing, writing and teaching drama. She then became involved in Casting, spending several years in Manhattan and Los Angeles working in Film and Television. You'll find her name on: *Parenthood*, *When Harry Met Sally*, *Lord of the Flies*, *Side Out*, *Ghost*, *Witness to the Execution*, *Cutters*, along with many other projects, more obscure. She was directly involved in starting the careers of several of today's celebrities. Along with her Artistic and Casting Director duties, she is the force behind Gateway's Acting School Division, where she teaches the advanced classes, and directs the Manhattan Showcase for the school's competitive students. Her daughter Hayley, now twelve, is her joy. She continues to give her heartfelt effort to the involvement and success of her family's legacy that is Gateway Playhouse.★

**InstrumentalEase** powered by Sinfonia® is presented through special arrangement with The Rodgers and Hammerstein Organization and Realtime Music Solutions, 121 West 27th Street, Suite 804, New York, NY 10001.

Realtime Music Solutions (RMS) is a full service production and technology company conceived to bring creators of live entertainment together with innovative products. Together with The Rodgers and Hammerstein Organization, RMS has developed InstrumentalEase, a new orchestral performance instrument. In combination with traditional instruments, the InstrumentalEase can augment the ensemble creating any size orchestra desired. InstrumentalEase design by Frederick Bianchi and David B. Smith, Realtime Music Solutions.

SINFONIA® is a registered trademark of Realtime Music Solutions.

**STAGE DOOR**  
School of Dance  
**Summer Classes**  
now forming



- State-of-the-Art Studio
- Ballet, Tap, Jazz, Hip Hop, Modern
- Weekly Character Dance Camps

655-19 Montauk Hwy • East Patchogue NY  
(Just west of McDonald's)  
Call now for class schedule  
**631.654.8858**  
www.stageoordancer.com

Official Winery of Gateway Playhouse

**Duck Walk Vineyards**  
231 Montauk Hwy. • Water Mill • NY - (631) 726-7555  
44535 Main Road • Southold • NY - (631) 765-3500  
www.duckwalk.com  
**OPEN 7 DAYS • 11 am - 6 pm**  
Wine Tastings and Tours

**Beach House**  
Restaurant

Lunch & Dinner - Indoor/Outdoor  
363 Grove Ave. Patchogue 631-758-3524  
(closed Mondays)

**Want A "Spa Massage" Without The Spa Prices?**  
Call Fasulo Chiropractic and experience therapeutic massages at reasonable prices.

**Fasulo Chiropractic**  
Embrace Life Holistically

"The most relaxing massage I ever had!"  
L.S., Westhampton Beach

Dr. JoAnna Fasulo - Chiropractor and Applied Kinesiologist  
Eileen Valenti & Frank Dallaire: NYS Licensed Massage Therapist  
631-289-3939 • 680-C Route 112, Patchogue, NY 11772  
(next door to The Pita House)

— Voted Best Chiropractor on Long Island by Long Island Press 2007, 2008, 2009 —

**Mention this ad and receive \$10 off a Full Hour Massage**

**Pamela Lerner**  
ANTIQUES

*Pam and Kate*  
invite you...

In honor of your patronage of the arts,  
to a complimentary glass of wine\*  
at the legendary  
**Bellport Country Club.**

Experience unique Bellport Village and visit Pamela Lerner Antiques to pick up your gift card.

\*Complimentary glass of wine with purchase of lunch or dinner. Gift card must be presented.

145 South Country Road Bellport, New York 11713 PAMELALERNERANTIQUES.COM 631.776.2183

# From Broadway to Overseas...

## Q&A with Saigon Stars

### Raul Aranas and Alex Lee Tano

By Jennett Meriden Russell

Back by popular demand *Miss Saigon* features two of the performers that made the previous Gateway production a massive local hit in 2003. Returning are South Korean singing sensation Sojung Lee, known to American audiences as Alex Lee Tano, and Raul Aranas as the Engineer.

Ms. Tano recaptures her role of "Kim," a role she also held on Broadway and in the second national tour of *Miss Saigon*.

Gateway sat down with Ms. Tano, who was also the voice in the Korean version of

Disney's *Mulan*, to discuss her love for the role of 'Kim', and her pop singing career in South Korea.

**Gateway:** "Gateway Producer Paul Allan and Casting Director Robin Joy Allan both agree you are the quintessential 'Kim' and they were thrilled that you agreed to play the role again. What is it that attracts you to play the part again?"

**Alex Lee Tano:** "First of all, I love the Allans and I love being at Gateway – people are wonderful here. I didn't really think I was going to come back, figuring the last time I played 'Kim' here was pretty much it for me, but she is a character that is quite believable. I've played other musical characters that are so made up that you have to exaggerate so much, but none of them were as sincere as 'Kim,' nor real as her, nor complete as her."

**GW:** "How do you get in touch with the character of 'Kim'? Did you know someone like her in Korea?"

**ALT:** "I don't really know of anybody like 'Kim.' My parents were under the age of 10 when the Korean War broke out, maybe my grandparents might have some stories. But, when I was little we had a lot of Korean War related schoolbooks, and we had to write things about it, how we felt about it. I also remember that in the early 1980s some of the political tensions between North and South Korea began to melt and the families that had been separated by the war found their lost family members in North Korea.

They would show the reunions on TV. I was nine or ten at the time, but I was very touched and effected by those scenes. They were very intense, and people who are still waiting for their family members, they're all over the place, and you relate to them so easily.

I think my 'Kim' is very different from other American actors who have played the part, because I'm actually from one of those countries."

**GW:** "Bringing up the emotions of 'Kim' and the traumas she faces, is that draining to do night after night?"

**ALT:** "In the beginning it was, but as an actor, as a professional you have to find a place where you can come back to and start all over again."

**GW:** "So, which do you prefer, acting or your singing career in Korea?"

**ALT:** "I do enjoy acting, but the singing is my dream."

**GW:** "You're a pop singer in Korea. How would you define your music?"

**ALT:** "I'm not Britney Spears. I'm more like the Korean version of Andrea Bocelli or Josh Groban. I'm an adult contemporary singer, and my fans tend to be much more reserved. You won't find a mosh pit at one of my concerts."

Also starring in the show is Raul Aranas, who starred as the "engineer" in the 2003 Gateway version of *Miss Saigon*, and the first US national tour of *Miss Saigon* at the beginning of the century. The seasoned Broadway actor also starred recently in the world premiere of the musical *Giant* at the Signature Theatre in Arlington, Virginia.

Gateway asked Mr. Aranas why he is drawn to the part of the overbearing and nefariously mysterious "engineer."

**Raul Aranas:** "Apparently I'm good at it, for one thing. But I love the part, it's akin to doing Richard III or Iago from Shakespeare's *Othello*."

**Gateway:** "*Miss Saigon* is a modern opera in that every word during the show is sung, and that can put a strain on a singer's vocal chords. How do you overcome that stress on your voice?"

**RA:** "It was difficult for me years ago, because I was not a musical theater actor. But I've done quite a few musicals over the years, and I've learned that keeping in shape helps, and in *Miss Saigon*, it's very physical with a lot of movement, so you have to pace yourself, because unlike an opera, you can't just plant your feet and sing an aria." ★



"I pride myself in providing the best quality dental care at affordable fees."

**Complete Family & Cosmetic Dentistry**

**Shawn P. Shannon**  
DMD

- Friendly, Gentle, One Dentist Practice
- Your dental needs and concerns are handled with the care you will appreciate.
- New Patients Welcome

285 Sills Road, Bldg. 15F  
East Patchogue • Brookhaven Professional Park

**654-1040**  
For appointments or questions, ask for Ginger

Thanks to all our Patients who have referred Family & Friends

Call to see if we take your insurance  
Sorry, Medicaid not accepted



"Let's Have Fun" Est. 1986

**Lunch Served**  
Tuesday - Sunday, Starting at 11:30 a.m.

**Late Night Dining**  
Kitchen Open Till 11 p.m., Tuesday - Sunday

Open 6 Days - Tuesday-Sunday  
11:30 a.m.-2 a.m.

**your neighborhood restaurant & pub**



www.cavanaugh'sbluepoint.com  
255 Blue Point Avenue, Blue Point  
631-363-2666



# GATEWAY PLAYHOUSE STAFF

## ADMINISTRATIVE

Executive Producer.....Ruth Allan  
 Producer.....Paul Allan  
 Associate Producer.....Jeff Bellante  
 General Manager.....Gale Edwards  
 Company Manager.....Michael Baker  
 Assistant Company Manager.....Stefan Schuette  
 Assistant to the Producer.....Kevin Schaefer  
 Administrative Assistant/Intern.....Sarah Innes  
 Musical Contractor.....Jeff Hoffman

## ARTISTIC

Artistic/Casting Director.....Robin Joy Allan  
 Director/Choreographer.....Bob Durkin  
 Associate Choreographer.....Jodi Kuhlmann  
 Musical Director.....Andrew Graham  
 Scenic Designer.....Michael Anania  
 Lighting Designer.....Doug Harry  
 Costume Designer.....Allen Wilson  
 Resident Sound Designer.....Cody Spencer  
 Assistant Musical Director.....Brendan Whiting  
 Assistant to the Artistic/Casting Director.....Jessica Harrison  
 Production Photographer.....Jeff Bellante

## BOX OFFICE

Box Office Manager.....Laurie Parr  
 Group Sales.....Claire Ward  
 House Manager.....Joanne Famiglietti  
 Box Office Staff.....Allison Conley, Diane Koerber, Nadine Hazard,  
 Christina Montalto, Michelle Montalto, Don Rebar,  
 Kyle Reitan, Linda Unger, Francesca Welhaus

## PRODUCTION

Production Manager.....Brian Loesch  
 Production Stage Manager.....Dom Ruggiero\*  
 Wardrobe Supervisor.....Marianne Dominy  
 Scenic Coordinator.....Brittany Loesch  
 Technical Director.....AD Garrett  
 Master Electrician.....Kurt Krohne  
 Sound Engineer.....Shane Bourgeois  
 Assistant Master Electrician/Deck Chief.....Jose "El Jefe" Santiago  
 Shop Foreman.....Mark Frederick  
 Wardrobe Assistants.....Jessica Spota, Rachael Ralby  
 General Technicians.....Matt Anastasio, Courtenay Drakos,  
 AJ Lebenns, Keith Reilly

Scenic Artist.....Sarah Tinti  
 Sound Consultant.....Domico Sack  
 Production Management Intern.....Jon Dykstra  
 Stage Management Interns.....Ashley Bigge, Matthew Montville  
 Electrics Interns.....Colin Chauche, Jacob Forstein, Avi Meck  
 Sound Intern.....Don Hanna  
 General Technician Interns.....Robert Bursztyc, Eric Burt,  
 Zac Kollegger, Martin Maningo, Bryan M. Prywes, Zach Towlin  
 Wardrobe Interns.....Allen Davidson, Stephen Szymanski  
 Video Systems.....Kevin Schaefer

## FACILITIES

Facilities Manager.....Don Harrison  
 Concessions Manager.....Carl DeMasi  
 Cleaning Staff.....Felix Bonilla, Ray Tobia  
 Facilities Apprentice.....Brendan O. Smith  
 Hospitality Consultant.....Michael Taylor  
 Grounds Maintenance.....HTM Landscaping Company  
 House Staff.....Eric Burt, Ryan Hudak, Martin Maningo,  
 Lauren Parr, Edward Wecera  
 General Counsel.....Ann L. Nowak & Associates



Summer  
 Classes Enrolling  
 Now.

## ACTING AND MUSICAL THEATRE TRAINING

all levels of acting for all ages thru adult

## GATEWAY ACTING SCHOOL

LEARN FROM THE PROFESSIONALS!

286-9014



*Gateway Playhouse extends its gratitude to the following local restaurants and shops for helping us celebrate our 60 years by participating in the 'gift certificate/coupon book to subscribers' promotion:*

*Avino's Italian Table, Painters' Restaurant, South Country Inn, Porters on the Lane, Meritage Trattoria, Chachama Grill, Papa Nicks, Pura Vida, La Margherita, Sicilia D'Oro, Brick House Brewery, The Oar Restaurant, The Ground Round, Bobbique, Bellport Jewelers, Summer Salt Beach House, Variety Mart, Circa Something Antiques, Pamela Lerner & Kate Carmel Antiques, Village Paint, Bellport Arts and Framing Studio, and Carla Marla's.*

**Your Safe,  
 Solid, Secure  
 Financial Partner**  
 Since 1890

**SUFFOLK COUNTY  
 NATIONAL BANK**

*Twenty-nine branch locations  
 throughout Suffolk County.*

Visit us on the web at  
[www.scnb.com](http://www.scnb.com)

Member FDIC Equal Opportunity Lender

**ROE AGENCY INC.**  
*Insurance Since 1898*

*Personal & Commercial  
 Life & Health*

- \* Homeowners \* Automobile \*
- \* Flood \* Boat \* Umbrella \*
- \* Commercial Property \*
- \* Liability \* Business Auto \*

**All Forms of Insurance**

◆ 125 East Main Street ◆  
 ◆ Patchogue, New York 11772 ◆  
 Phone: 631.475.4000  
 Fax: 631.475.7648

**Swezey**  
 FUEL CO., INC. - EST. 1919

**Suffolk's Largest Family  
 Owned Oil Company**

- Automatic Oil Delivery Service
- 24-Hour Emergency Service
- Budget Plans That Pay You Interest
- Expert Installation Of Boilers,  
 Burners, Hot Water Heaters &  
 Pool Heaters

VISA MasterCard

**475-0270**  
 51 RIDER AVE., PATCHOGUE

# The Show Goes On... Before The Play & After The Matinee, Bellport Village Welcomes You

## Don't Let Pain Interfere With Your Life!

Dr. Joseph Merckling can treat your problems giving you relief so you can live a more complete and full life.



**You and your body deserve it! Pain can become a thing of the past!**  
*Massage Therapy and Acupuncture by Anthony Cerabino.*

**Providing Relief For:** Neck and Back Pain/Stiffness • Migraines • Sciatica  
Shoulder and Knee Pain/Stiffness • Low Level Laser Therapy Offered  
Headaches • Foot Pain/Plantar Fasciitis

Most Insurances accepted • Auto Accidents/No Fault • Worker's Comp



Now offering  
digital foot scans  
for Custom  
orthotics



**Merckling Family Chiropractic, P.C.**

Dr. Joseph R. Merckling, 16-2 Station Road, Bellport - 631-286-2300 Fax 286-4615



## THE BELLPORT

Steps away from the Gateway Playhouse



New York Times Review

159 South Country Road, Bellport, New York 11713  
(631) 286-7550

**Carla Marla's**  
ICE CREAM PARLOR  
& OLD FASHIONED CANDY SHOP

**Coupon**  
Buy 1 Get 1 Half Price  
**Coupon**

8 Bellport Lane, Bellport Village, NY 11713  
631-803-6108

Located across the street from Porters on the Lane  
email us at [CarlaMarlas@hotmail.com](mailto:CarlaMarlas@hotmail.com)

## Bellport Festival July 25th



Presented by the Bellport Chamber of Commerce  
& the Village of Bellport

Sign up today for your **FREE**  
Bellport Discount Card!  
For Event Schedule & Discount Card  
go to: [www.bellportchamber.com](http://www.bellportchamber.com)

*Creative Framing*  
**Bellport Arts & FRAMING STUDIO**  
Inc.  
147 South Country Rd.,  
Bellport  
**803-6076**  
*Preserves Memories*

**Gateway PLAYHOUSE**  
Long Island's Premier Professional Theater

**60**  
Years of Theater

2009  
Main Stage  
Broadway Series



July 29-August 22  
In Bellport

## DIRTY ROTTEN SCOUNDRELS

August 26-September 12  
In Patchogue

## A CHORUS LINE

September 16-October 11  
In Bellport

## CHILDREN'S THEATER

### PINOCCHIO

Friday, July 10 at 10:30 am & 1 pm

Performed by Yates Musical Theatre on the Patchogue Theatre stage

The whimsical and magical story of a puppet on his journey to becoming a real boy is told in song and dance.

### JIM WEST'S DINOSAURS

Friday, July 17 at 10:30 am & 1 pm

Performed by Theaterworks USA on the Patchogue Theatre stage

We bring back the popular- Dinosaurs, from Theaterworks USA.

### SLEEPING BEAUTY

Friday, July 24 at 10:30 am & 1 pm

Performed by Yates Musical Theatre on the Patchogue Theatre stage

A classic story of good over evil and love enduring, with songs, duels, antics, comedy and a happy ending all rolled into one.



### THE WIZARD OF OZ

Friday, August 7 at 10:30 am,

Friday, August 14, 21 at 10:30 am & 1 pm

Saturday, August 8, 15, 22 at 10:30 am

Presented by Gateway Playhouse on our Bellport stage

Join Dorothy, the Lion, the Tinman, the Scarecrow and Toto too, over the rainbow to the Land of Oz. The story and all the wonderful songs you know and love is performed by a company of professionally trained young actors that your kids will delight in meeting.

### RUMPELSTILTSKIN

Friday, August 28 at 10:30 am & 1 pm

Performed by Yates Musical Theatre on the Patchogue Theatre stage

The classic Brother's Grimm story spins musical gold as a fair young maiden marries a prince due to her art with a spinning wheel.

All Children's Theater Seats: \$10.00

25 or more : \$9.00 • 100+ : \$5.00 (Certain restrictions apply) **RESERVED SEATING**

Sorry, Children aged 2 or older only. No infants please, as they disturb others from enjoying the performance. Every child, out of the womb, must enter with a purchased ticket. \*Shows subject to change without notice

**CALL OR LOG ON FOR INFORMATION: 631-286-1133**  
**1-888-4TIXNOW WWW.GATEWAYPLAYHOUSE.COM**



# PORTERS

*on the lane*

RESTAURANT • BAR • CATERING



*Every Thursday Evening Piano Bar with  
Henry Haid from the Broadway musical "Movin' Out"*

For reservations or catering info:

**631-803-6067**

**[www.portersonthelane.com](http://www.portersonthelane.com)**

email: [PortersBellport@aol.com](mailto:PortersBellport@aol.com) fax: 631-803-6069

19 Bellport Lane • Bellport Village NY 11713