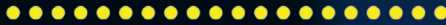


Buddy

The BUDDY HOLLY Story



**THE** Gateway  
PERFORMING ARTS CENTER OF SUFFOLK COUNTY

# PORTERS

— on the lane —

RESTAURANT • BAR • CATERING



*Come Before or After the Show!*

VISIT OUR ALL NEW WEBSITE TO MAKE EASY ONLINE RESERVATIONS OR TO CHECK OUT  
OUR NEWEST MENUS, BAR SPECIALS & LIVE MUSIC SCHEDULE!

[WWW.PORTERSONTHELANE.COM](http://WWW.PORTERSONTHELANE.COM)

FOR RESERVATIONS OR CATERING INFORMATION  
CALL (631)803-6067

DINNER HOURS:

SUNDAY thru THURSDAY 4-10PM

FRIDAYS & SATURDAYS 4-11PM

LUNCH HOURS:

WEDNESDAY thru SUNDAY 12-4PM

EMAIL US @ [PORTERSBELLPORT@AOL.COM](mailto:PORTERSBELLPORT@AOL.COM) ADDRESS 19 BELLPORT LANE, BELLPORT VILLAGE, NY, 11713





*ELEMENTS  
OF STYLE*

*Pamela Lerner*  
ANTIQUES

VINTAGE & MODERN • GIFTS THAT ARE NEVER ORDINARY

145 South Country Road Bellport, New York 11713

631.776.2183

PAMELALERNERANTIQUES.COM PAMELALERNERANTIQUES@MSN.COM



## Hello, and welcome to the 64<sup>th</sup> season of live, professional theatre at The Gateway!

**S**ince the founding of the Performing Arts Center of Suffolk County, our goal has been to entertain, challenge and motivate all audiences through ambitious productions, expansive outreach initiatives, and inclusive educational programs.

This has been an exciting season for us, and we are happy that you have been a part of our family and shared in our passion and love for the performing arts. We began the season with *Grease*, a 1950s musical, and we are proud to end our season with *Buddy—The Buddy Holly Story*. Buddy Holly rose to fame with his unique sound and became an influential musician, as well as a popular icon of the 1950s. We hope hearing his music and seeing his story onstage brings you back to the days of vinyl records and rock'n'roll!

We recognize that your continuing support is what allows us to bring these theatrical luminaries to Long Island. Because of this, we know that our progress cannot be measured in charts, graphs or dollar signs. Instead, true fulfillment means that every person who comes through our doors experiences the full joys of the performing arts.

With that in mind, we are renewing our long-term commitment to customer service and accessibility by launching new features that will make your Gateway visit even more enjoyable. For example...

Thanks to new technology, we are now able to offer better levels of access to our shows and programs. Our Facebook and Twitter pages will continue to offer behind-the-scenes exclusives to all that goes on here at The Gateway.

We know that your time is valuable, and you now have the option to print your tickets at home, cutting down on long lines at will call. You can also opt to receive a reminder email a few days before your next scheduled performance, which includes directions to the theatre, dining recommendations and other ways to maximize your visit.

As we begin to implement these improvements, know that your valued feedback is always important to us. Please contact myself or our staff with questions, comments and concerns.

These are just a few small ways that the Performing Arts Center of Suffolk County continues to be YOUR theatre, serving YOUR community. Know that YOU are the reason for all that we do here at Long Island's Oldest Professional Theatre. Thank you for your continued support.



Sincerely,

Paul Allan, Managing Producer



*By Arrangement with Alan Janes  
Presents*

# **BUDDY THE BUDDY HOLLY STORY**

Written by  
**ALAN JANES**

*Featuring*

NIKKI ARNONE, ERICA AUBREY, JAMES BEAMAN, XAVIER CANO,  
JASON COHEN, JAYSON ELLIOT, STEVE GAGLIASTRO, KURT JENKINS,  
KYLE LACY, LINNEA LARSDOTTER, SCOTT MOSS, MATTHEW J. RIORDAN,  
TROY VALJEAN RUCKER, KIMBERLY MICHELLE THOMAS, AND SAM WEBER

Managing Producer

Associate Managing Producer  
**JEFF BELLANTE**

**PAUL ALLAN**

General Manager  
**DOM RUGGIERO**

Production Manager  
**BRIAN LOESCH**

Company Manager  
**MICHAEL BAKER**

Musical Supervisor  
**JASON COHEN**

Lighting Design  
**DOUG HARRY**

Costume Design  
**COLLEEN GRADY**

Production Stage Manager  
**TRACEY WOOLLEY**

Set Design  
**ROBERT ANDREW KOVACH**

Directed and Choreographed By  
**DJ SALISBURY**

[www.buddythemusical.com](http://www.buddythemusical.com)



**SPECIAL THANKS TO SUNRISE TOYOTA FOR THEIR SUPPORT OF THIS PRODUCTION**  
Sunrise Toyota, 3984 Sunrise Highway, Oakdale, NY 11769

# W<sup>m.</sup> J. O'Neill

Sales Exchange Co., Inc.  
Jewelers and Collateral Loanbrokers

Platinum  
and Gold

Classic and  
Contemporary

Jewelry Designs that will excite your senses.

## Loans On Personal Property

Fast & Confidential | No Maximum Loan | No Credit Check  
Excellent Buys on Unredeemed Pledges | LICENSED & BONDED

Jewelry | Diamonds | Watches | Sterling Flatware  
Musical Instruments & Rentals | Expert Jewelry Repairs



Veronica O'Neill, *President*

Serving Long Island for Over 60 Years  
Mention this ad for 10% discount on purchase  
Jewelry items subject to availability

*We Buy Gold*

Licensed by Suffolk County  
Consumer Affairs

One East Main Street, Patchogue | 631.289.9899 | [www.wmjoneills.com](http://www.wmjoneills.com)



# BUDDY: THE BUDDY HOLLY STORY

## THE CAST

(in order of appearance)

Hipockets Duncan	James Beaman*
Radio Engineer	Xavier Cano*
Hay Riders	Jason Cohen, Jayson Elliot*, Steve Gagliastro* Linnea Larsdotter, Scott Moss*
Teeny Boppers	Nikki Arnone, Erica Aubrey*, Matthew J. Riordan
Church Lady	Kimberly Michelle Thomas*
Buddy Holly	Kurt Jenkins*
Jerry Allison	Kyle Lacy
Joe B. Mauldin	Sam Weber*
Frigo Jingle Girls	Nikki Arnone, Erica Aubrey*, Linnea Larsdotter
Decca Musicians	Jason Cohen, Matthew J. Riordan
Decca Producer	Jayson Elliot*
Decca Engineer	Steve Gagliastro*
Norm Petty	Scott Moss*
Vi Petty	Erica Aubrey*
4th Cricket	Matthew J. Riordan
D. C. DJ	Jason Cohen
New York DJ	Steve Gagliastro*
Philadelphia DJ	Troy Valjean Rucker*
San Francisco DJ	Xavier Cano*
LaVerne, Apollo Performer	Kimberly Michelle Thomas*
Lloyd, Apollo Performer	Troy Valjean Rucker*
Interview DJ	Jason Cohen
Maria Elena	Nikki Arnone
Murray Deutch	Steve Gagliastro*
Shirley	Linnea Larsdotter
Italian Woman	Erica Aubrey*
Italian Man	Jason Cohen
Harlem Woman	Kimberly Michelle Thomas*
Harlem Man	Troy Valjean Rucker*
Photographers	Xavier Cano*, Troy Valjean Rucker*
British DJ	Jayson Elliot*
Peggy Sue	Linnea Larsdotter
Clear Lake M.C.	James Beaman*
J. P. Richardson, The Big Bopper	Jayson Elliot*
Ritchie Valens	Xavier Cano*
Tommy	Matthew J. Riordan
Mary Lou	Linnea Larsdotter
Snow Birds	Nikki Arnone, Erica Aubrey* and Kimberly Michelle Thomas*
Jack Daw	Steve Gagliastro*
Buddy Holly Orchestra	Erica Aubrey*, Jason Cohen, Kurt Jenkins*, Kyle Lacy, Linnea Larsdotter, Scott Moss*, Matthew J. Riordan, Troy Valjean Rucker* and Sam Weber*
Vocal Trio	Nikki Arnone, Linnea Larsdotter, Kimberly Michelle Thomas*

**WARNING:** The photographing or sound recording of any performance is strictly prohibited.

**FIRE NOTICE:** The exit indicated by a red light and sign nearest to the seat you occupy, is the shortest route to the outside. In the event of fire or other emergency, please do NOT run. WALK to that Exit. However, under normal circumstances, when leaving the Theatre, use the center rear exits. SMOKING is prohibited in the BUILDING, as required by the Suffolk County NO SMOKING Ordinance. Smoking in any area designated "No Smoking" renders the offenders subject to a fine, or imprisonment, or both.



The Musicians employed in this production are members of the American Federation of Musicians.



\*Actors employed in this production are members of Actors' Equity Association, the union of Professional Actors and Stage Managers in the United States.



The Director/Choreographer is a member of the Society of Stage Directors and Choreographers, Inc., an independent national labor union.

*Your trusted local dealer with a national reputation since 1967*

# *Miller's Mint Ltd.*

**Do you want to invest in rare coins & precious metals?  
Whether you are buying or selling, we can help!**



## **Immediate Cash!**

**One of America's Largest Coin & Stamp Dealers Will Buy Your Old Coins, Stamps & Jewelry Immediately. Sell to Professionals for the Highest Prices in 25 Years!**

**NOW BUYING:** Gold Coins, Rare Coins, Foreign Coins, Silver Dollars, Indian Pennies, All Silver Coins, Kennedy Halves (before 1971), Proof Sets & Mint Sets, Proof Coins, Old Currency, Silver War Nickels, Commemorative Coins, Colonial Coins, Gold School Rings, Bullion (Gold, Silver & Platinum), Old Watches, Rare Watches, Old Jewelry, Broken Gold, Silver & Platinum Jewelry, Old Envelopes & Post Cards, Diamonds, Sterling Silverware, Franklin Mint, Silver Medals, Old Military Items, Stamp Collections.

**Monday-Thursday 9:30 a.m. - 5:30 p.m.  
Friday 9:30 a.m. - 7 p.m.  
Saturdays by Appointment Only**



**313 E. Main Street, Patchogue • 475.5353 • millersmint.com**

# ACT 1

## THE ACTION...JANUARY 1956 TO FEBRUARY 1959

SCENE 1: ONSTAGE AT THE GRAND BOWL (A ROLLER SKATING RINK)—LUBBOCK, TEXAS

*"Rose of Texas"*  
*"Flower of My Heart"*  
*"Ready Teddy"*

SCENE 2: DECCA RECORDING STUDIOS—NASHVILLE, TENNESSEE

*"That'll Be the Day"*

SCENE 3: KDAV RADIO STUDIO—LUBBOCK, TEXAS

SCENE 4: NORVAJAK STUDIOS—CLOVIS, NEW MEXICO

*"Rock Around with Ollie Vee"*  
*"Everyday"*

SCENE 5: APOLLO THEATER—HARLEM, NEW YORK

*"Shout"*

SCENE 6: BACKSTAGE AT THE APOLLO THEATER

SCENE 7: APOLLO THEATER—HARLEM, NEW YORK

*"Not Fade Away"*  
*"Peggy Sue"*  
*"Words of Love"*  
*"Oh Boy"*

# ACT 2

SCENE 1: MUSIC PUBLISHER'S OFFICE—NEW YORK CITY

SCENE 2: OUTSIDE THE EXSTASIS NIGHT CLUB—NEW YORK CITY

SCENE 3: NORVAJAK STUDIOS—CLOVIS, NEW MEXICO

*"Think it Over"*

SCENE 4: BUDDY AND MARIA ELENA'S APARTMENT—NEW YORK CITY

*"True Love Ways"*

SCENE 5: BACKSTAGE SURF BALLROOM—CLEAR LAKE, IOWA

SCENE 6: ON STAGE AT THE SURF BALLROOM, INTERMISSION ENTERTAINMENT

*"Patriotic Medley"*  
*"Why Do Fools Fall in Love"*

SCENE 7: CLEAR LAKE CONCERT

*"Chantilly Lace"* *"Maybe Baby"*  
*"Peggy Sue Got Married"* *"La Bamba"*  
*"Raining in my Heart"* *"It Doesn't Matter Anymore"*  
*"Rave On"* *"Johnny B. Goode"* *"Oh Boy"* (encore)



State of the Arts



NYSCA

***Buddy: The Buddy Holly Story* brought to you in part by support from Suffolk County and New York State Council on the Arts.**



# Rave On

## *Buddy's influence continues*

Buddy Holly has been called “the single most influential creative force” in popular music. Bluegrass and blues merged with rockabilly and early rock ‘n’ roll in Holly’s imagination, and resulted in the unmatched music that he made with The Crickets. Now, generations after his first hit record, his footprint can still be found in the music of today’s most accomplished artists.

“One of the main things about the Beatles is that we started out writing our own material. People these days take it for granted that you do, but nobody used to then. John and I started to write because of Buddy Holly. It was like, ‘Wow! He writes and is a musician.’ ... In our imaginations back then, John was Buddy and I was Little Richard or Elvis.”

- Paul McCartney of the Beatles

“To guys of my age at the time, if you were the least bit interested in music, Buddy was the one, because he sang and was very self-contained. Elvis was fantastic, but because Buddy had glasses and looked a bit like a bank clerk, you could say to yourself, ‘Well, it’s not just for guys who look like Elvis,’ because otherwise it was sort of unattainable.”

- Keith Richards of the Rolling Stones

“When I was 16 or 17 years old I went to see Buddy Holly play in Duluth, National Guard Armory. And I was three feet away from him, and he looked at me. And I just have some kind of feeling that he was - I don’t know how or why - I know he was with us all the time we were making this record in some kind of way.”

- Bob Dylan

*(Photo upper left) Buddy Holly (with Fender Stratocaster guitar) & the Crickets on the Ed Sullivan Show. Holly & the Crickets popularized the slimmed down structure of a rock band (two guitars, bass, drums and vocals) that remains popular to this day.*

“I play Buddy Holly every night before going onstage. It keeps me honest.”

-Bruce Springsteen

“I only needed specs for reading, but as a result of wearing them all the time to try to look like Buddy Holly, I became genuinely nearsighted.”

-Elton John

“The great thing about Buddy Holly is his songs had a rhythm and bluesy kind of feel, super catchy with really strong vocal melodies. That’s what I really liked. Later on I really appreciated that he played a Strat while other guys played hollow body. Part of his sound was the way he played that Fender, and I really appreciated it.”

- Kirk Hammett of Metallica

“When I think of Buddy Holly I think of the ... purest form of rock ‘n’ roll ... And if we want to change things, if anybody wants to change anything in this business ... let’s get back to that.”

- Shawn Crahan of Slipknot



Special thanks to **Family Melody** for supplying some of the musical instruments for this production.

77 South Ocean Avenue • Patchogue NY, 11772  
Phone: (631)-475-3210 • Fax: (631)-475-3842  
E-mail: [Familymelody@ix.netcom.com](mailto:Familymelody@ix.netcom.com)



# Who's Who



**NIKKI ARNONE** (*Maria Elena/Ensemble*) is thrilled, yet again, to rejoin her beloved Buddy Holly cast! Atlanta, Georgia native and University of Oklahoma grad, Nikki's credits include: National Tour: *West Side Story* (on-stage swing). Regional: *Buddy* (Maria Elena) at Ogunquit Playhouse and Lyric Theatre of Oklahoma. Film: *Yellow*, Dir. Nick Cassavetes. Thank you to my slightly crazy but always supportive family!



**ERICA AUBREY** (*Vi Petty/Frigo Jingle/Snowbird/Ensemble*) is thrilled to return to Gateway and work with such amazing people in *The Buddy Holly Story*. Most recently

Erica covered Kelli O'Hara as the understudy for Cathy in *Far From Heaven* Off-Broadway at Playwrights Horizons. Favorite credits include: Judy in *9 to 5 the Musical* for Gateway Playhouse and Ogunquit Playhouse, Shelby in the 10th Anniversary production of *The Spitfire Grill* directed by the shows composer, James Valcq, Bobbi Michele in *Last of the Red Hot Lovers* for The Gas Light Theater and Edendorf Singer in *Music in the Air* at City Center Encores! Gratitude and love to Miles, my family and The Roster. [www.ericcaubrey.com](http://www.ericcaubrey.com)



**JAMES BEAMAN** (*Hipockets Duncan/MC*) starred as Sir Robin in the First National Tour of *Monty Python's Spamalot*. Off-Broadway, he originated the role of Michael in

*The Road To Qatar!* and is featured on the Original Cast Album. Other Off-Broadway includes *When Pigs Fly* and *Whoop-Dee-Do!* (Original Cast). Recently, James played King Frederic in the world premiere of the Broadway-bound *Frog Kiss* at Virginia Stage Company. He starred as Albin in the Ogunquit Playhouse production of *La Cage Aux Folles* opposite Maxwell Caulfield. James has performed leading and featured roles at Goodspeed

Musicals, The Kennedy Center, North Shore Music Theatre, Merry-Go-Round Playhouse, Stages St. Louis and many others. Visit James at [www.jamesbeaman.com](http://www.jamesbeaman.com).



**XAVIER CANO** (Ritchie Valens/Engineer/DJ/Photographer) Broadway: *Grease* (Sonny LaTierri). Off-Broadway: *Giant* (Public Theater), *RENT* (NWS), *Lucky Guy* (Little Shubert), *Freckleface Strawberry* (NWS), *The Capeman* (Delacorte). Regional: *Dames at Sea* (Bay Street), *Give It Up!/Lysistrata Jones* (Dallas Theater Center), *WSS* (50th Anniversary European Tour, BSC, Fulton). U of Miami alum. Film/TV: *Life of an Actress*, *CollegeHumor*, *We Are NY*, *Battery Park*.



**JASON COHEN** (*Musical Supervisor, Interview DJ, Ensemble/u/s Jerry Allison/u/s Joe B. Mauldin*) is a recent graduate from NYU's Tisch School of the Arts, BFA Drama, where he has studied at the Playwrights Horizons Theatre School, the Experimental Theatre Wing, and the Royal Academy of Dramatic Art in London. He has also worked as a musician, musical director, and arranger in New York, New Jersey, and London. Thanks to DJ, Dom, Michael, Paul, Tracey, and the inspiring cast and crew. Special thanks to Danny Lincoln, Carla, Mom, Dad, Gillian, family, and friends for the endless support. B"H, AYC. Upcoming: musical supervisor/performer, *The Grapes of Wrath*. [www.Jason-Cohen.net](http://www.Jason-Cohen.net)



**JAYSON ELLIOT** (*Big Bopper/Decca Producer*) is happy to be making his Gateway debut and to once again be rockin' n rollin' alongside Buddy and Ritchie! Favorite credits include: *Buddy!* (Big Bopper) at Ogunquit (ME), Oklahoma Lyric (OKC), Flatrock (Asheville), New Theatre (KC), Media (Philly), Roxy (Nashville); *The Full Monty* (Dave); *25th...*

## Who's Who

*Spelling Bee* (Barfee); *Ave. Q* (Brian); *Guys & Dolls* (Nicely); *Wizard of Oz* (Lion); *Oklahoma* (Jud Fry); *Smoke on the Mountain* (Stanley); *Pump Boys...*(Jim). Much Love and Many Thanks to everyone at Gateway, Stage 9 Talent, Karen, the best Mom on the planet, and most importantly YOU, for supporting live theatre! Let's Rock n Roll!!!!



**STEVE GAGLIASTRO** (*Murray Deutch/Lead Hayrider/Ensemble*) is pleased to return to *Buddy* having performed in several productions, including at the Riverside Theatre, Flat

Rock Playhouse and the recent U.S. National Tour. Other Tours: *Cinderella* w/Lea Salonga, *Spongebob Live!* (Broadway Asia), *Cabaret* (NetWorks Tours); Regional: Ogunquit, Ivoryton, Gateway Playhouses, Theatre by the Sea, Barnstormers, Stoneham, Hanover Theatres. Gags, who can also be seen in the new David O. Russell film *American Hustle*, holds a BA in Music/Education from UMASS, Amherst. For Sonny and Alice Vizzo.



**KURT JENKINS** (*Buddy Holly*) is fresh off the National Tour of *Buddy: The Buddy Holly Story*, and is delighted to continue his journey with Buddy at The Gateway. Theatre credits include: *Godspell* (Jesus), *The Fantasticks* (Matt), *Desire Under The Elms* (Eben) and *Bat Boy* (Bat Boy). Additionally, Kurt has studied Film Production at the University of Central Florida (B.F.A.) and performs his original music under the name Skyway Spirit ([www.skywayspirit.com](http://www.skywayspirit.com)). Kurt would like to thank his family and friends for their encouragement, patience and tough love.



**KYLE LACY** (*Jerry Allison/Drums*) Gateway debut! Regional: *Piano Duel* (Hersheypark), *Buddy Holly Story* (Lyric Theatre OKC), *End Days* (Carpenter Square Theatre).

University: *Bernstein's MASS* (Street Singer), *Legally Blonde* (Warner). Internships: Horizon Theatre, Serenbe Playhouse. Alum of DeKalb

**A PUB OF THE OLD STYLE**  
*Pub Fare That Will Make Your Tongue Smile*

**REESES 1900**

*Relax Before or After The Show — Full Bar & Menu*  
Kitchen Open 11 AM to 11 PM (Mon. thru Sat.) — Bar 'til 1 AM

70 North Ocean Avenue • Patchogue • (631) 289-1900 • [www.reeses1900pub.com](http://www.reeses1900pub.com)

Discover



Patchogue

**SIDEWALK SALE DAYS:** Thursday, July 11-13 and Thursday, August 8-10, 9:30 am

**FAMILY FUN NIGHT:** Friday, July 12, 5-9 pm

**ALIVE AFTER FIVE®:** Thursdays, July 11 & 25 and August 8 & 22, 5-9 pm • Rain Date September 5

**OLDIES NIGHT:** Friday, August 9, 6-9 pm

All events are open to the public.

(631) 207-1000 • info@patchogue.com • www.patchogue.com • 15 North Ocean Avenue, Patchogue

EST. 2012



JEWELRY & HOME BOUTIQUE

Costume Jewelry, Local Artisan Jewelry,  
Beach Wear, Baby Gifts and much more.

11 North Ocean Ave.

Just North of the four corners • 631-438-0414



21 Flavors of Self-Serve Frozen Yogurt  
& over 50 Toppings

Stop in after the show for our  
delicious pastries & coffee drinks.

Get 20% off your order with this coupon!  
Not to be combined with other offers.

14 East Main Street, Patchogue • Open Daily

[www.BerryGoodYogurtCafe.com](http://www.BerryGoodYogurtCafe.com)

PAT FELICE'S



Automotive & Truck Repair

147 West Ave. Patchogue, NY • 631.475.1540

Family Owned and Operated Since 1955

10% OFF WHEN YOU MENTION THIS AD



Irish Crossroads

Fine Irish Imports  
Hand Knit Sweaters



Celtic Jewelry

Home Decor

Gift Certificates

& So Much More!!!



22 E.Main St. Patchogue

569.5464 [irishcrossroadsonline.com](http://irishcrossroadsonline.com)

ROE AGENCY INC.

OVER A CENTURY OF COMMITMENT

Since 1898

All Forms of Insurance  
Call us for a quote!

125 East Main Street • Patchogue, NY 11772

PHONE: 631.475.4000 • FAX: 631.475.7648



Sensationally Sweet  
is a non-profit candy  
store, owned and  
operated by the  
Economic Opportunity  
Council of Suffolk

All proceeds go to  
community programs

18 East Main St.  
Patchogue, NY 11772  
631.627.8759

[sensationally-sweet.com](http://sensationally-sweet.com)



## Who's Who

School of the Arts and Oklahoma City University. Thanks to DJ Salisbury and the entire Gateway Playhouse creative team! For my mom and dad.



**LINNEA LARSSON** (*Mary Lou/ Ensemble/u/s Vi Perry*) started her performing career in Sweden, and she's had the privilege to perform in 12 countries and 3 continents. Beside her acting career, she is also a professional folk musician. Linnea is thrilled to join the cast of *Buddy*, this being the first professional show she ever saw. New York credits include *Xanadu*, *Crab House*, *La Llorona* and *Save the Robots*. She is also currently filming the feature film *Till We Meet Again*, and is booked for 2 short films and 3 web series.



**SCOTT MOSS** (*Norm Petty/ Ensemble*) Scott Moss is thrilled to be a part of this Gateway/Ogunquit production of *The Buddy Holly Story*. This marks the 5th production of *Buddy* for him, but his debut in the role of Norman Petty, after previously playing Joe Mauldin in his last 4 productions. Favorite credits also include; *Christmas Up The Holler* (written by the director, DJ Salisbury), *Johnny Guitar*, *La Traviata*, *Man of La Mancha*, *Macbeth*, *My Fair Lady*, *Fortinbras*, *Biloxi Blues*, among many others. Many thanks to you for supporting LIVE theater! Special thanks to my good friends, family, and my wife, Dana. A special dedication to the memory of both my parents, and specifically my mom, who passed away on July 27th, 2013.



**MATTHEW J RIORDAN** (*Tommy/ Ensemble/u/s Buddy Holly*) is ecstatic to join the cast of *Buddy*! Matthew proudly holds a BFA in Musical Theater from Pace University. He would like to thank his family, team, and friends for their love and support. Past Credits: TV: *NBC's My Kid Would Never* (Lead), Off-Broadway: *NYMF'S Trouble: The Musical* (Chris), *Smile: A New Rock Musical* (Punk) Regional: *Legally*

*Blonde* (Warner). Follow me on twitter! @MatthewJRiordan



**TROY VALJEAN RUCKER** (*Apollo Performer/Dance Captain/Ensemble*) Select NY/Regional: *Buddy Holly Story* (Walnut Street Theatre, Ogunquit Playhouse), *Oklahoma!* (Portland Center Stage), *Zanna, Don't!*; *Elegies for Angels...*; *365 Days/365 Plays*; *Show Boat*; *Ragtime*; *South Pacific*; *Angels In America* (PAGE Award Nomination); *L'Histoire du Soldat*; *Babes In Toyland*. National/European Tours: *Jesus Christ Superstar*; *International Symphony Orchestra*. Opera/Concerts: New York City Opera; Carnegie Hall; Lincoln Center; Kennedy Center; Aretha Franklin with the Detroit Symphony Orchestra. TV/Commercials: Bio Network, History Channel, NBC, UPN, Talero Tequila, Ford Motor Company. [www.TroyValjeanRucker.com](http://www.TroyValjeanRucker.com)



**KIMBERLY MICHELLE THOMAS** (*LaVerne/Ensemble*) is thrilled to be part of *The Buddy Holly Story*. Her credits include the roles of Nina in the 1st & 2nd National Tours of *'Swonderful*, Michelle Morris in the 2013 National Tour of *Dreamgirls*, and Samantha in *A Dance for Rylie*. Kimberly trained at the Princeton Ballet School and Center Stage Dance and Theater. She is a graduate of The University of the Arts. Kimberly would like to thank her family and friends, and her agent, Ms. Lisa Price.



**SAM WEBER** (*Joe Mauldin/ u/s Ritchie Valens*) Sam is thrilled to be coming to Gateway to continue rock'n as Joe B. A Wisconsin Native and proud Brooklyn transplant, he lives there with his amazing wife Brittany, ACM on Book Of Mormon. National Tours: *Buddy Holly Story* (Joe B.), *Erth's Dinosaur Zoo* (Puppeteer). Regional Favorites: *Hairspray* (Link, Beef and Boards), *Buddy* (Joe B, Ogunquit), *Les Mis* (Pimp/ Prouvaire, Maine State) Thanks to my all my family, Weber and Levasseur. And to Brittany, who I always see in the back of the house :0)



**DOUG HARRY** (*Lighting Designer*) is happy to be designing another Gateway production. His past credits here include last year's *CATS*, *Carousel*, *Miss Saigon*, *Scarlet Pimpernel*, *Ragtime*, *Titanic*, *Dracula the Rock Opera* and *Holiday Spectacular on Ice*. Doug holds a degree in Theatre Production and Stage Management from Guildhall School of Music and Drama in London, UK. He is currently the house designer for Mohegan Sun Casino. Doug's company DarkSide Design has also done design and programming work for General Motors, Six Flags Theme Parks and The Basketball Hall of Fame to name a few.

**TRACEY WOOLLEY** (*Production Stage Manager*) is happy to be at the Gateway Playhouse and reunited with Buddy Holly. With a career spanning from Las Vegas to New York, some of her favorite credits include Blue Man Group, Cirque Du Soleil's *Mystere* and The Lincoln Center 1st National Tour of *South Pacific*. A proud graduate of Brigham Young University and member of Actors Equity. Tracey would like to thank her family, friends and Heavenly Father who makes everything possible.

## Who's Who

**DJ SALISBURY** (*Director*) has directed and/or choreographed for theaters nationwide that include Paper Mill Playhouse, Dallas Summer Musicals, Sacramento Music Circus, Lyric Theatre of OK, Denver Center, Ogunquit Playhouse- Maine, Riverside Theatre - Florida, Arkansas Shakespeare, and ArtsCenter Coastal Carolina. Favorite experiences directing for Gateway Playhouse: *La Cage Aux Folles*, *The Wizard of Oz*, *42nd Street*, *Cats*, *Gateway's Holiday Spectacular* of '03, '05 and '08, *Evita*, and 1 of the 9 productions of *The Will Rogers Follies* that he has staged. In NYC, he has directed numerous readings and workshops including the revised *The Mystery of Edwin Drood* (featuring Sally Struthers), Lincoln Center's concert with Disney composer Alan Menken, and the Broadway bound rock musical CHIX 6. New works he's helped develop include *Femme Fatale* (starring *Grey's Anatomy's* Sara Ramirez), *Viva la Diva*, *Lovelace*, *Holding On* and *A Proper Place*. Choreographic endeavors for TV: ABC's "Dancing with the Stars Road Trip," The Rachael Ray Show,



# Live & Let Die

**JOIN US!**  
Three Performances Only

**NEW YEAR'S EVE**  
7:00pm and 10:30pm  
January 1, 4:00pm

@ the  
**Patchogue Theater**

**A SYMPHONIC TRIBUTE**  
to the music of  
**PAUL MCCARTNEY**

featuring  
Tony Kishman

Call  
**613-286-1133**  
for tickets

# VISIT BELLPORT

Bellport Chamber of Commerce supports the continuing success of the Gateway Theater

After the show visit our Village and see all we have to offer!

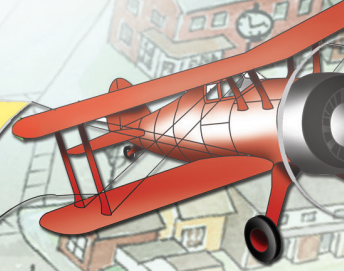


Bellport Day Festival July 27th

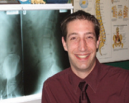
Fine Dining, Music, Art, Unique Shops and Charm!

**SIGNUP FREE** online for a Bellport Discount Card: [bellportchamber.com](http://bellportchamber.com)

AFTER THE SHOW



## Don't Let Pain Interfere With Your Life!



Dr. Joseph R. Merckling

Providing Relief for: Neck and Back Pain • Headaches • TMJ Pain • Sciatica • Scoliosis • Shoulder and Knee Pain • Postural Problems and Pregnancy Related Back Pain

**Merckling Family Chiropractic, P.C.**  
16 Station Road, Suite 2, Bellport Village  
631-286-2300 • [www.mercklingdc.com](http://www.mercklingdc.com)

## The Red Bench



GIFTS • HOME ACCENTS  
HANDMADE JEWELRY, POTTERY, ART, ETC.

151 MAIN STREET BELLPORT NY  
631-286-8682 • [RedBenchBellport.com](http://RedBenchBellport.com)

## Bellport Arts & FRAMING STUDIO

803-6076

**Creative Picture Framing**

Fine Art Printing  
Cards / Gift Wrapping Paper

137 South Country Rd., Bellport



An Established Tradition of Service

FOR ALL YOUR REAL ESTATE NEEDS  
CALL YOUR LOCAL BROKER  
SERVING THE AREA FOR  
OVER 20 YEARS!

[www.swanproperties.com](http://www.swanproperties.com)  
322 South Country Rd.  
East Patchogue, NY 11772

631-289-5550  
631-286-1222

- Residential
- Commercial
- Free Market Analysis
- Notary Public



Deborah L. Galligan  
Broker/Owner



[www.papanickspizzeria.com](http://www.papanickspizzeria.com)

Home of the Crispy Crust • Daily Specials

**631-286-6400**

117C South Country Road | Bellport Village



Bellport's  
OTHER  
Live Theatre

**playcrafters**

[www.bellport-playcrafters.com](http://www.bellport-playcrafters.com)

*Carla Marla's*  
ICE CREAM PARLOR



ONE FREE TOPPING WITH THIS AD!

EXPIRES 10/1/13

New Phone # (631) 803-6630  
8 Bellport Lane • Bellport Village NY 11713

Licensed RE Broker David J. Rice

Bellport Village's Exclusive MLS Agency

**RICE  
REALTY**  
GROUP Inc.

SALES – RENTALS – COMMERCIAL

Tel: (631) 624.1200 [www.ricerealty1.com](http://www.ricerealty1.com)



**THE BELLPORT**

Steps away from the Gateway Playhouse



New York Times Review

159 South Country Road, Bellport, New York 11713  
(631) 286-7550



**MONTI'S  
AUTO WORKS**

*It's in the Details*

Expert Auto Collision Repairs  
All Insurance Accepted

1791 Montauk Hwy, Bellport, NY 11713

**286-2116**



**MONTI'S  
AUTOCLINIC**

Quality Service, Diagnostics and Repair

11 Station Rd., Bellport, NY 11713

**803-6935**



# Peppercorn

BREAKFAST  
LUNCH  
DINNER

# Cafe



**AMERICAN CUISINE**

Sunday Plated Brunch 10am-2pm - \$15 per person

Happy Hour 4-6 pm - Half Priced Drinks

4-7pm \$6 Burger - Half price beer & wine

Live Music Friday and Saturday 7-11 pm

Kitchen is open until midnight Sunday-Thursday • Friday and Saturday until 1am

Centrally located between the Gateway Playhouse and Patchogue Theatre at  
668 SOUTH COUNTRY ROAD, EAST PATCHOGUE

**thepeppercorncafe.com • 631-438-0661**

WATERSIDE DINING

The

# Oar

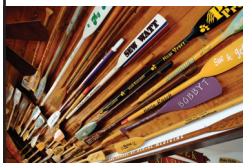
**Steak & Seafood Grill**

## THE FINEST & FRESHEST SEAFOOD

*Start your day... Sitting by the bay... Come by land or by sea for breakfast, coffee or tea ~ Saturdays & Sundays*

**Enjoy Sunset Cocktails at Our Outdoor Gazebo Bar**

Live music Wednesday thru Sunday • Open Year Round Lunch & Dinner • Summer 7 days Winter 6 days



**264 WEST AVENUE, PATCHOGUE (631) 654-8266 THEOAR.COM**



and "Dance Your A\*\* Off." As writer: book/lyrics for *The Man Who Would Be King*, Book/lyrics for *Merlin's Magicademy* (produced at Six Flags theme parks throughout North America), head writer/lyricist for the Emmy-winning Oklahoma Centennial TV special starring Reba McIntyre, Vince Gill, and Shirley Jones, and DJ has written the opening song for two Tournament of Roses Parades. [www.djsalisbury.com](http://www.djsalisbury.com).

**UNDERSTUDIES**

- Buddy Holly ..... Matthew J. Riordan
- Joe B. Mauldin ..... Jason Cohen
- Jerry Allison ..... Jason Cohen
- The Big Bopper ..... Michael E. Baker\*
- Ritchie Valens ..... Sam Weber\*
- Norm Petty ..... Michael E. Baker\*
- Vi Petty ..... Linnea Larsdotter
- LaVerne ..... Ariana Valdes
- Hipockets Duncan ..... Michael E. Baker\*

**MUSICAL CREDITS**

The use of the songs in this production is by arrangement with:

- \*Flower Of My Heart' Holly House Inc.
- \*Ready Teddy' Unichappell Music Inc.
- \*Blue Days Black Nights' Unichappell Music Inc.
- \*That's All Right' Unichappell Music Inc.
- \*A Teenager In Love' Unichappell Music Inc.
- \*That'll Be The Day' MPL Comm. Inc. MPL/Wren
- \*Peggy Sue' MPL Comm. Inc. MPL/Wren
- \*Maybe Baby' MPL Comm. Inc. MPL/Wren
- \*Not Fade Away' MPL Comm. Inc. MPL/Wren
- \*True Love Ways' MPL Comm. Inc. MPL/Wren
- \*Looking For Someone To Love' MPL Comm. Inc. MPL/Wren
- \*Listen To Me' MPL Comm. Inc. MPL/Wren
- \*It's So Easy To Fall In Love' MPL Comm. Inc. MPL/Wren
- \*Well Alright' MPL Comm. Inc. MPL/Wren
- \*When You Ask About Love' Acuff Rose Music Inc.
- \*Words Of Love' MPL Comm. Inc.
- \*Oh Boy' Wren Music Co. c/o MPL
- \*Rave On' Wren Music Co. c/o MPL
- \*Heartbeat' Wren Music Co. c/o MPL
- \*Changing All These' Cedarwood Publishing Co.
- \*Think It Over' Cedarwood Publishing Co. /Southern Music Publishing Co.
- \*Everyday' Southern Music Publishing Co.
- \*Mailman Bring Me No More' Southern Music Publishing Co. /Belstock Publishing
- \*Peggy Sue Got Married' Southern Music Publishing Co.
- \*Why Do Fools' Windswept Pacific Ent.
- \*Chantilly Lace' Donald Daily, Glad Music Co. / Fort Knox Music Inc. / Trio Music Company Inc.
- \*Raining In My Heart' House Of Bryant Pubs. Inc.
- \*It Doesn't Matter Anymore' Management Agency
- \*Johnny B Goode' Isalee Music Co.
- \*Rock Around With Ollie Vee' Hill And Range Songs Inc.

All other songs, arrangements and incidental music by Paul Jury  
Additional material and originally directed by Rob Bettinson

# CHET MITRANI PLASTERING, LLC

*Four Generations of Quality Craftmanship*

- TRADITIONAL 3 COAT PLASTER | VENETIAN PLASTER
- ORNAMENTAL PLASTER | CEMENT STUCCO
- SPRAY FIREPROOFING | VENEER PLASTER | LATHING | EIFS

## CHET MITRANI

Office: 631.468.3150 Fax: 631.468.3152 Email: [chet@cmitraniplastering.com](mailto:chet@cmitraniplastering.com)  
1337-7 Lincoln Avenue, Holbrook, NY 11741

# BASIL

## RESTAURANT & SPIRITS

Italian American Restaurant • Seafood • Steak • Chicken • Pasta

Serving Lunch & Dinner Daily

Happy Hour 2 for 1 Beer, Wine & Well Drinks

Monday-Friday, 4p.m.-7p.m.

Live Music Friday & Saturday, 7p.m.-10p.m

**10% off your check with this coupon.**

*Must present coupon for discount. Cannot be combined with other offers. Expires 10/31/13*

14 Station Road in the heart of Bellport Village

631-803-8236 • Visit us at [Bellport.com/basil](http://Bellport.com/basil)

*W<sup>m</sup>.J. O'Neill*  
Sales Exchange Co., Inc.  
Jewelers and Collateral Loanbrokers

Quality string, brasswinds,  
woodwinds and percussion  
instruments available for  
purchase or rentals starting  
at **\$89.95**



We also offer a  
full line of  
accessories and  
supplies.

*Serving Long Island  
For Over 60 Years*

One East Main St. Patchogue  
631.289.9899 • [wmjoneills.com](http://wmjoneills.com)



**BE A VOLUNTEER!**

Want to donate with your time?

Join the G.I.V.E. program and join

**Gateway's Incredible Volunteer Experience.**

Call Michael at 631-286-0555 ext. 2121

or email at [mbaker@gatewayplayhouse.com](mailto:mbaker@gatewayplayhouse.com).

**Gateway Playhouse would like to thank  
our volunteer staff for their dedication  
and support. It is much appreciated.**

Marie Rachek - Head Usher

Missy Atchue, Carmela Aiosa, Olga Belz, Camille Brideson, Millie Diagostino, Pat Ely, Betty Entress, Kristina Farmer, Joyce Gambina, Linda Good, Peter Haustein, Mary Hubner, Barbara Keup, Mary Lanier, Pat Lazazzo, Joe Livote, Connie Merced, Sue Nemet, Peter Pernice, Bea Peters, Linda Randolph, Sandy Reifel, Terry Seng, Alexis Sheridan, Jack Stein, Mary Wirth

# CONTRIBUTE TO THE FUTURE OF THE ARTS

WE INVITE YOU TO LEND YOUR SUPPORT AND BECOME A BIGGER PART OF OUR PERFORMING ARTS FAMILY.

## ★ STAR BILLING ★

\$5,000

## ★ DIRECTORS CIRCLE ★

\$2,500

## ★ FRONT ROW VIP ★

\$1,000

## ★ BACKSTAGE PASS ★

\$500

## ★ CAST MEMBER ★

\$250

## ★ STAGE HAND ★

\$100

## ★ FAN CLUB ★

\$50

Go to [gatewayplayhouse.org/donate](http://gatewayplayhouse.org/donate) or call (631) 286-7027 for more information

### Star Billing

The Manhattan Club  
New York State Council  
on the Arts  
Suffolk County  
Competitive Arts  
Council  
Sunrise Toyota

David & Debbie  
Morrissey  
Donald Steckler  
Dorry Tooker  
Dwight & Joan Stecker  
Edward Graziano  
Ed & Barbara Knowles  
Gloria Cummings  
Horst & Jo-Ann  
Boettcher

Sandra Rignola  
Scott Vine  
Steve & Marge Frost  
Sue Kahl & Jim  
Vaughan  
Teresa Abramowski  
Terry Blonder  
Terry Townsend  
Thomas Gavin

Margie Ludewig  
Martin Laschever  
Marylin Hamilton  
Michael Stone  
Patricia Sullivan  
Pfizer Matching Gifts  
Foundation  
Phil & Carole Epstein  
Richard Hoshino  
Ricky Styles  
Robert & Patricia Mark  
Roger Grace  
Ruth Flynn  
Sandy Reifel  
Dennis & Sharon Pape  
Tara Greenstone  
William & Ann O'Shea

Henry & Dorothy  
Rowehl  
Irwin Wein  
Janet & Bill Wroblecki  
Jean Bearley  
Jean Hebllich  
Joan Mathie  
John & Erdine Marshall  
Judith Drange  
June Zegel  
Kalmen &  
Myrna Einbinder  
Ken & Helen Budny  
Kevin & Batrice Beach  
Kevin O'Brien  
Laura Hawryluk  
Leonard & Joyce Lang  
Maria Pierce

### Directors Circle

Francis Palamara  
Pamela Lerner Antiques  
Cullen & Danowski, LLP  
Teresa Fiori

Jane Love  
Janet Taylor  
John & Laurie Tuthill  
John McGiff  
John Shea  
John Taylor  
Judith Steinberg  
Ken & Tamara Fehling  
Lauri Murray  
Lew & Karen Miller  
Linda Carr  
Linda & Vincent Leuzzi  
Maria Lopez

**Stage Hand**  
Alfred Scherzer  
Alicia DeMonte  
Ann Quinn  
Bob & Sally Philidus  
Cindi Wellins  
Connie Mancuso  
David Tobachnik  
Diana & Michael  
Maniscalco  
Edward &  
Jane-Marie Wright  
Elizabeth Maher  
Evelyn Bergen  
Frank & Patricia Hansen

### Fan Club

Amy Bisagni  
Andrew Setzer  
Ann Kelly  
Ann Lucas  
Anthony &  
Rachelle Psaris  
Arthur Webb  
Auntie Q  
Barbara Wright  
Craig & Elaine Curry  
Daniel & Diana  
Voorhees  
David & Janet Cassidy  
Dolores Sartor  
Donald Stonebridge  
Dorothea Cappadona  
Edward &  
Margaret Dankievitch  
Eileen Astrin  
Ellie Mahoney  
Evelyn Trimboli  
Frederick & Anne Marie  
Schiller  
Gladys Gregnoli

Marjorie Cecere  
Mary Ann Baade  
Maureen Hopkins  
Michael Kane  
Michael La Salle  
Michael O'Grady  
Michelle Smith  
Nancy Vaillancourt  
Patricia Tarasenko  
Patricia Sullivan  
Patrick & Addie Bistrin  
Ralph & Barbara  
Mazella  
Reid & Laura Terwilliger  
Richard & Evelyn Brody  
Roger Grace  
S. Paul Zola  
Stanley & Ruth Resnick  
Robert & Patricia Falco  
Virginia Miller  
Virginia Waterman  
Wendy Erlandsom  
William & Carol Finn  
*As Of 7/24/2013*

### Backstage Pass

Alexandra Diamond  
Clare Rose Inc.  
Frank & Diane Lento  
Gale Edwards  
Gloria Mancuso  
John Shea Jr &  
Diane Crean  
Josepha & Patricia  
Van de Wetering  
Judy Fortuna-Ince &  
Peter Ince  
Kent & Connie Adee  
Maria Pierce

Marjorie Feeney  
Matthew &  
Allison Scollan  
Michael & Hwassoon  
Mullaney  
Michael & Lillian  
Mercurio  
Monica Glamore  
Nicole Dougherty  
Paul & Terry Townsend  
Patricia Trainor &  
Taylor Alonzo  
Raymond & Barbara  
Terry  
Richard & Maria Pierce  
Robert & Kathe  
Palermo  
Robert &  
Monica Glamore  
Robert Durkin  
Sally Connors

Gail Mancuso  
Gladys Gregnoli  
Janice Klein  
Janice Wargelin  
Jean Hebllich  
Joe Franco  
Joseph & Ellen  
Masterson  
John Marshall  
John Morris  
Rev. & Mrs. John  
Wallace  
Joseph & Margaret  
Doran  
Joseph Caldara  
Kerry Golde  
Lawrence Strickland  
Linda Carr  
Magdalene O'Keefe

### Cast Member

Ann Marie & Gary  
Loesch  
Arnie & Elizabeth Lizan

**Be a volunteer!** Want to donate with your time? Join the G.I.V.E. program and join Gateway's Invaluable Volunteer Experience.

Call Michael at 631-286-0555 ext. 2121 or email at [mb@gatewayplayhouse.com](mailto:mb@gatewayplayhouse.com)

To adjust the way your name is listed here, please email [Scot@gatewayplayhouse.org](mailto:Scot@gatewayplayhouse.org).

# Swezey

FUEL CO., INC. - EST. 1919

## Suffolk's Largest Family Owned Oil Company

- Automatic Oil Delivery Service
- 24-Hour Emergency Service
- Budget Plans That Pay You Interest
- Expert Installation Of Boilers, Burners, Hot Water Heaters & Pool Heaters



# 475-0270

51 RIDER AVE., PATCHOGUE

## RELEVÉ DANCE CENTRE

*Where everyone is a Star*

- Acro
- Ballet/Pointe
- Hip-Hop
- Jazz (Funk & Cont.)
- Lyrical
- Pre-School Programs
- Kindergarten
- PreJazz / Tap 1<sup>st</sup> grade
- Tap (Rhythm & Trad.)



### AM & PM CLASSES

Birthday Parties | Family Discounts  
**FREE TRIAL CLASS**

*Professional training  
in a nurturing environment*

631.472.9322

[www.relevedance.com](http://www.relevedance.com)

33B Montauk Hwy. | Blue Point, NY

# Avino's Italian Table

*Lobsterfest, the best on Long Island  
for 25 years! Every Monday  
Open 7 nights week*

108 South Country Road, Bellport Village  
[AvinosItalianTable.com](http://AvinosItalianTable.com)

# GATEWAY ACTING SCHOOL

Over 20 Years of Industry Training and Guidance

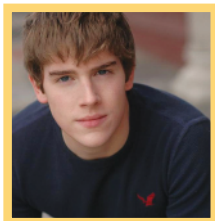
LED BY CASTING DIRECTOR ROBIN JOY ALLAN (*PARENTHOOD, LORD OF THE FLIES*)

**REAL ACTING • REAL TRAINING • REAL FUN**



## PROFESSIONAL INSTRUCTORS TEACH:

✳ ACTING ✳ AUDITIONING TECHNIQUE ✳ DIRECTING ✳ MUSICAL THEATRE  
... and fun production classes — with a show at the end!



*"The journey's never over, but I've reached a place of success in my acting career and it all started at Gateway."*

- School Alum Brendan Dooling  
(Currently stars as Walt Reynolds in *The Carrie Diaries* on the CW network)

Questions? Contact [artsoffice@gatewayplayhouse.com](mailto:artsoffice@gatewayplayhouse.com)  
Ready to enroll? Call (631) 286-1133 • [www.gatewayplayhouse.org](http://www.gatewayplayhouse.org)





# Mooseltoe

...a new moosical

**November  
23 - 30**  
in Bellport

With the voices of Al Roker,  
Tony® winner Faith Prince,  
Carole Shelly and more...

Book & Lyrics by Jim Semmelman  
Music by George Kramer



Disney's  
**BEAUTY  
AND THE  
BEAST**

**December 13 - 29**  
at the Patchogue Theater

Music by Alan Menken • Lyrics by Howard Ashman & Tim Rice  
Book by Linda Wolverton • Originally Directed by Robert Jess Roth  
Originally Produced by Disney Theatrical Productions



Tickets on sale for  
season performances

**THE ARTS THRIVE HERE**

[www.stallercenter.com](http://www.stallercenter.com)  
(631) 632-ARTS [2787]

**STALLER**  
CENTER FOR THE ARTS

  
Stony Brook  
University

## THEATRE SPECIAL 10% OFF DINNER

### For The Good Times!

Enjoy the warm, welcoming atmosphere and fine food at the BrickHouse Brewery & Restaurant and **SAVE 10% OFF your entire dinner bill.**

Just present your Gateway Playhouse tickets if dining before the show, or present your stubs if dining after the show, and receive 10% Savings!

10% savings valid 2 hours prior or after show date and time at the Gateway Playhouse or Patchogue Theatre. Cannot be combined with any other discount offer. Valid for lunch or dinner.

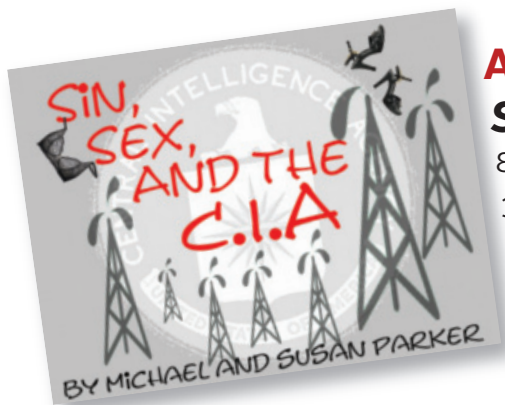


Open Daily 11 AM  
67 W. Main St., Patchogue (631) 447-2337 (631) 447-BEER  
[www.brickhousebrewery.com](http://www.brickhousebrewery.com)



# CLARE ROSE PLAYHOUSE

## SUMMER 2013 SCHEDULE



**April 26–May 11**

### ***Sin, Sex and the CIA***

8 p.m. Fridays and Saturdays

3 p.m. Sundays

Cost: \$15; \$12 for students  
and seniors

**July 12–28**

### ***A Delicate Balance***

8 p.m. Fridays and Saturdays

3 p.m. Sundays

Cost: \$15; \$12 for students  
and seniors



### **The Clare Rose Playhouse**

St. Joseph's College  
155 West Roe Boulevard  
Patchogue, NY 11772

For more information, call the playhouse box office  
at 631.654.0199 or visit [www.sjcnny.edu](http://www.sjcnny.edu).



# Swan Bakery

All Occasion Cakes

Guy Gagliano

The Official Bakery of Gateway Playhouse

15 South Country Rd., East Patchogue, NY 11772  
(631) 475-9626

## Ruland FUNERAL HOME, INC.

*Proudly Supporting the Arts  
that Enrich our Lives*

475-0098 David R. Romeo - Owner  
500 North Ocean Avenue; Patchogue NY 11772



From Patchogue Theatre  
entrance, 1 block west  
and four stores south

Caring & Knowledgeable Service  
Sizes & Widths up to EEEEE

Quality Footwear Since 1927

Comfortable Shoes, Sneakers,  
Sandals, Boots, Slippers & Socks  
for Men Women & Children

14 South Ocean Ave • Patchogue, NY 11772  
631-475-1047

Rockport, Easy Spirit, Florsheim, New Balance, Stride Rite,  
Teva, Timberland, Skechers, Ros Hommerson, Hoffer,  
Keds, Reebok, Dyeables, Topsider, Soft Spots, Clarks,  
Naturalizer, Hush Puppies, Daniel Green, Foamtreads,  
Toe Warmer Boots, Fifflop, Walking Cradles, etc.

**10% off any purchase with ad only**

Excludes Easy Spirit, Dr. Martens & other offers. Expires 12/31/13



www.ELIH.org

**Alcohol? Substance Abuse?**

**631.477.8877**

Inpatient

**631.369.8966**

Outpatient

Member East End Health Alliance — Eastern Long Island Hospital • Peconic Bay Medical Center • Southampton Hospital

### A Notice About Parking

We strongly encourage our patrons to always park on Gateway grounds. Parking is not allowed on Maplewood Drive north of the back Gateway exit. Parking is also prohibited on the east side of the street (Gateway side). Observe the No Parking signs.

The Village of Bellport has advised us that cars parked in these areas will be ticketed. Please park on the west side of the street, opposite the Gateway fence, between the back exit and South Country Road.

We appreciate your cooperation in making your visit to Gateway as pleasant as possible.

## ROYAL OAK DINER

Breakfast, Lunch and Dinner Daily  
Complete Early Bird Dinners 3-5:45 PM  
Complete Dinner Specials starting at \$12.95  
Lunch Specials Daily starting at \$6.95 11am-3pm

900 Station Road, Bellport

**631-286-5757**





We promise to offer **advanced trauma and emergency medical treatment** with the **utmost in compassion**. We promise to **care about your health – and value your time –** so you will not wait as long to see a doctor and a nurse . . . **and can leave feeling better, sooner.**

– Daniel G. Snediker, MD, FACEP, FAAEM, Director;  
Kent Au, RN; Charlene Persaud, RPA-C



**New PhysicianFirst Emergency Care Puts Patients First.** Brookhaven's renowned Level II Trauma Emergency Department has initiated PhysicianFirst, an innovative approach that moves the doctor's clinical evaluation to the front of the admission process, which reduces wait time and speeds diagnosis and treatment so you can feel better, faster. **Choose Brookhaven. We keep our promises. To find out more, call 631-654-7100.**



Memorial Hospital Medical Center

**BROOKHAVEN MEMORIAL HOSPITAL MEDICAL CENTER**  
101 HOSPITAL ROAD | PATCHOGUE, NY 11772 | [brookhavenhospital.org](http://brookhavenhospital.org)

# Many Success Stories. One Bank.



*Let us  
put you  
in the  
picture.*

[www.bridgenb.com](http://www.bridgenb.com)



22 Branches in Suffolk County | 631.537.1000

Member FDIC





# GO GREEN

with Sayville Ford!



## Ford Focus Electric

MPG 110 City/99 Hwy/105 MPGe combined

## Ford C-MAX

Hybrid 47 City/47 Hwy/ 47 combined  
Energi 108 City/92 Hwy/ 100 MPGe combined



## Clean Pass Vehicle

Sayville Ford

THESE VEHICLES QUALIFY

# \$15<sup>off</sup>

Any service for all makes and models

Must present coupon at time of write up. No two offers or specials can be combined. One coupon per repair. Exp. 06/30/2014

# \$250<sup>off</sup>

Any new or pre-owned vehicle purchase

Must present coupon at time of write up. No two offers or specials can be combined. One coupon per repair and household. Exp 06/30/2014



5686 SUNRISE HWY EXIT 50 • SAYVILLE, NY

631.589.4800  
SAYVILLEFORD.COM

FOLLOW US ON

